

# FLEX<sup>®</sup> SYSTEM

For installation on top of any flooring surface

Updated  
04.22.2024



**CONNECTRAC.**

A brand of **legrand**

# HOW WE CAN HELP

---

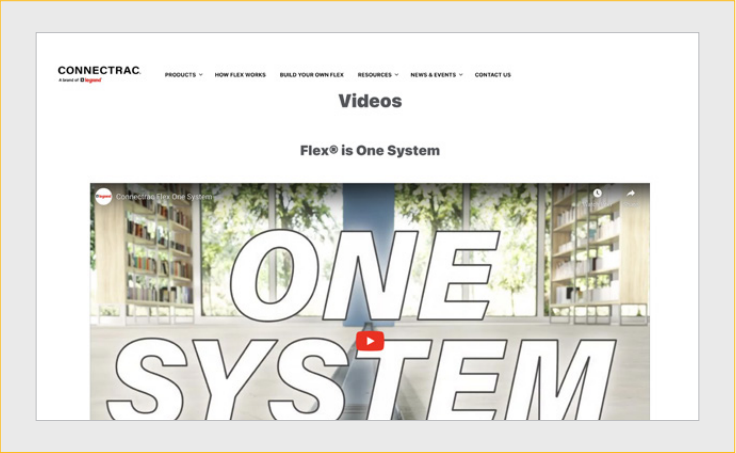
## Online Videos

See how the Flex® Raceway System is built out and configured with other innovative Legrand products.

View our online video repository.

[connectrac.com/home/videos](https://connectrac.com/home/videos)

---



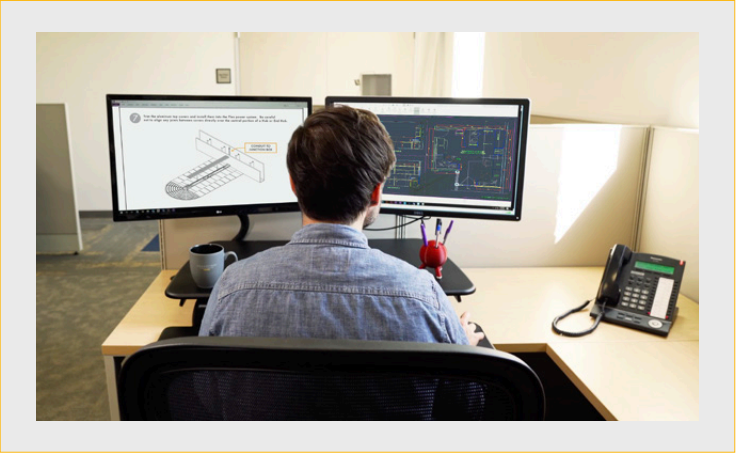
## Design Team Services

Connectrac® believes in providing exceptional customer service by offering unique resources like our Design Team.

These industry specialists are available to help you specify the best Flex solution for your next project.

[connectrac.com/design-services](https://connectrac.com/design-services)

---



## General Info & Questions

Contact us any time! | [877.480.5637](tel:877.480.5637) | [info@connectrac.com](mailto:info@connectrac.com) | [connectrac.com](https://connectrac.com)

# TABLE OF CONTENTS

---

What is Flex®?	Pg 4
How it Works	Pg 6
Get Started	Pg 8
Flex Data Capacity	Pg 9

---



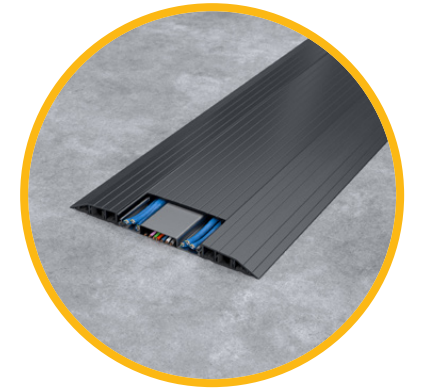
# FLEX SYSTEM

## For installation on top of any flooring surface

### Connectrac Flex® is...

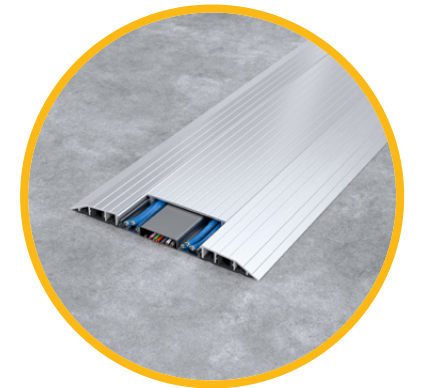
A floor-based power and data distribution system that allows users to quickly add connectivity or change power locations in a snap. Any Space. Any Building. Any Time.®

Available in these finishes:



**Dark Gray (DG)**

*Standard finish*



**Silver (SV)**

*Optional finish*

### Start Anywhere

Start a Flex run anywhere in your space - from the wall or from an open area with a 4" core hole.

*\*Silver finish shown here*



\*Poke-Thru and Surface-Mounted Entrance Fittings also available. Start a Flex run anywhere in your space - from the wall or from an open area with a 4" core hole.

**A**

**Entrance Fitting**  
Quick connector powers entire raceway & allows data to enter

**B**

**Raceway**

**C**

**Interchangeable Power Devices**  
Quickly snap into any Power Hub location

**Powertrac**  
Pre-wired raceway segment

**Power Hub**  
Connects Powertracs & provides access for power devices

Top Cover & Transition Ramps

**C**

**Data Device**  
Snaps into the raceway to provide data connectivity

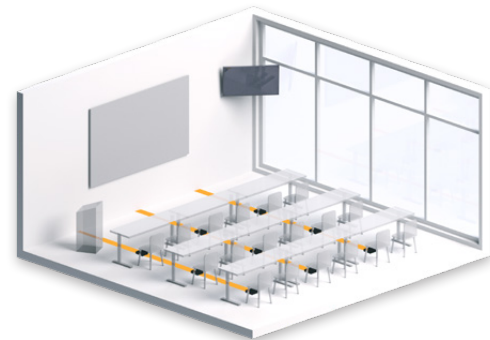
# HOW IT WORKS

Explore the graphic to learn more about the Flex system for installation on top of any flooring surface.

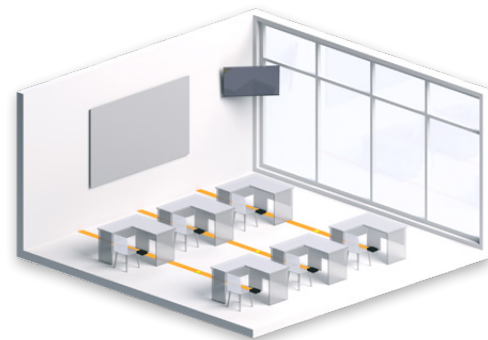


## Plan Flex Raceway System

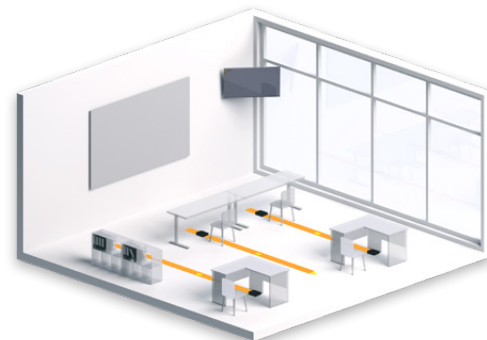
TIP: Visualize how your space might adapt and evolve over time.



What is the current use of this space?



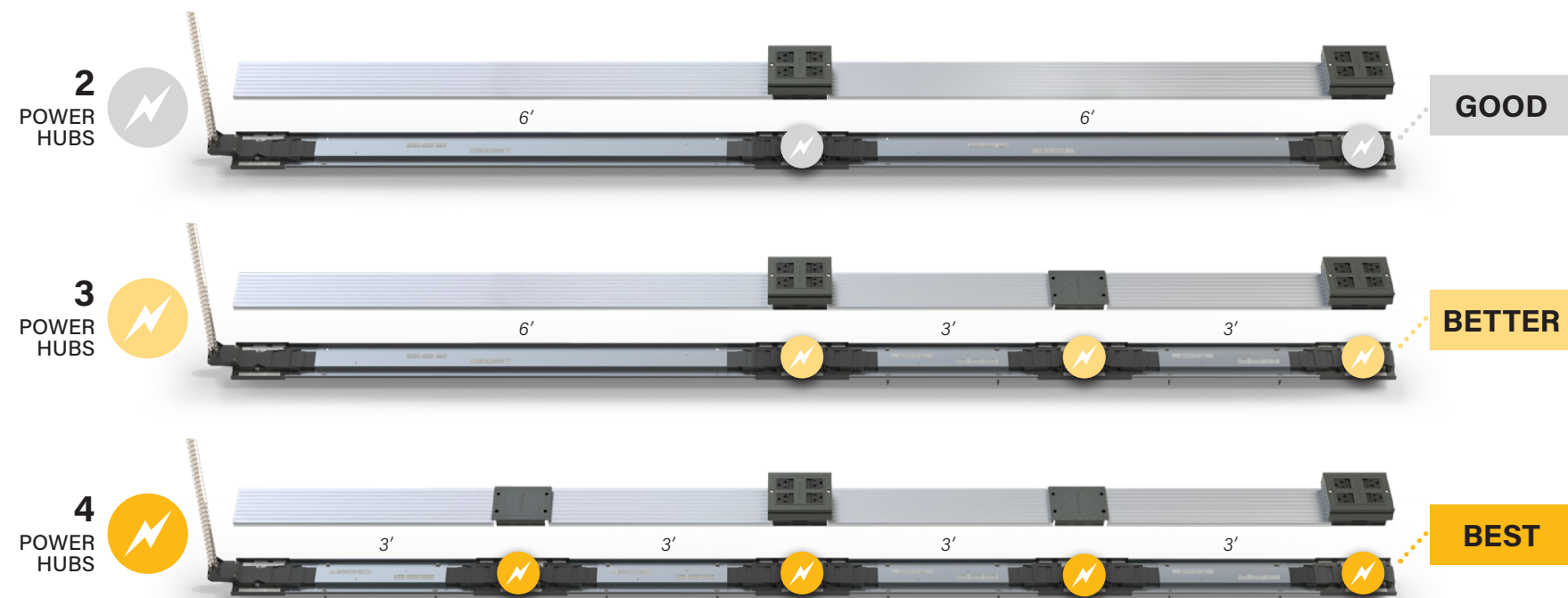
What else might it be used for in the future?



How might furniture be rearranged?

## Optimize Your Raceway

Increase your system's adaptability by adding **more** points of power access.



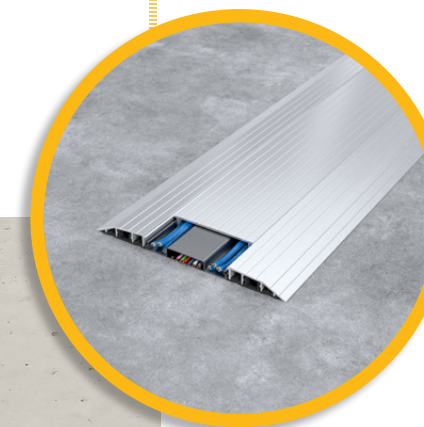
⚡ Power Hubs = access points for power devices

TIP: For greater flexibility at minimal cost, add more Power Hubs and connect shorter Powertracs.

## Where is power being supplied from?

Wall or Poke-Thru

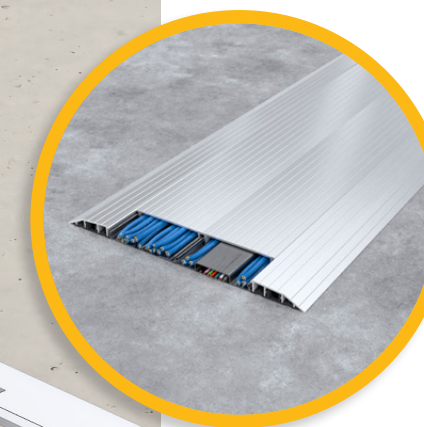
## How much data do you need?



### 0-4 cables

Typical for conference rooms

Turn to Next Page



### 5-14 cables

Typical for up to 7 workstations

Turn to Page 16



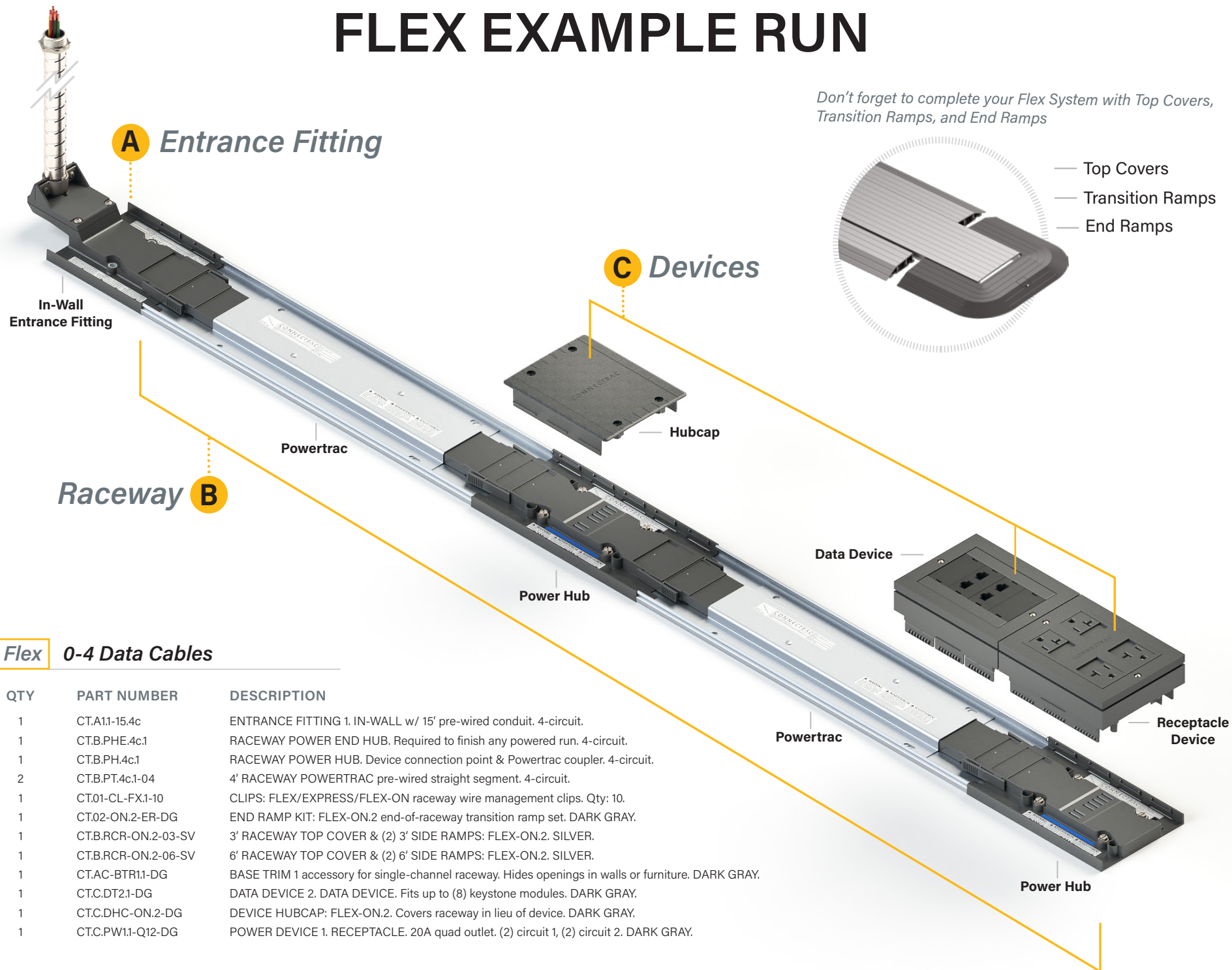
### 15-24 cables

Typical for up to 12 workstations

Turn to Page 22

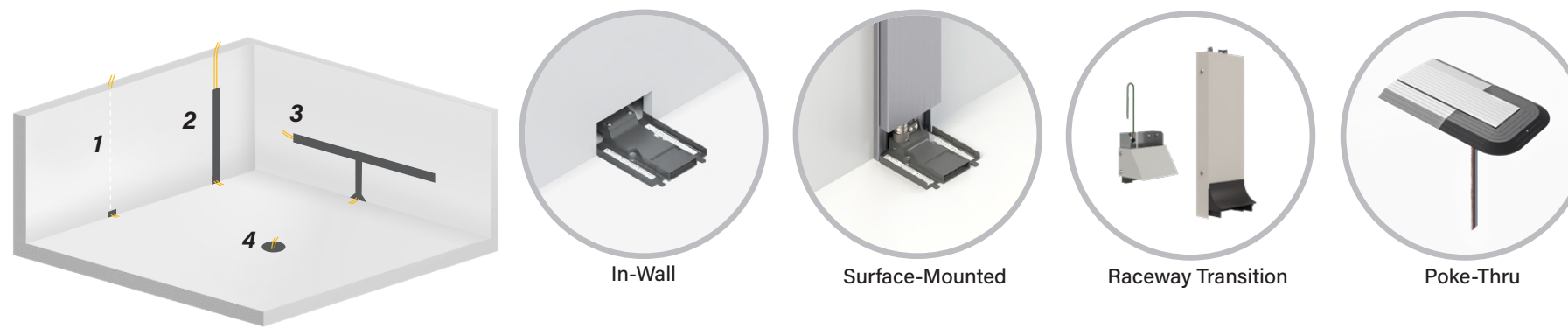


# FLEX EXAMPLE RUN



## A Entrance Fitting Choose where your Flex raceway will draw power from: Wall or Open Floor Space

### Entrance Fittings

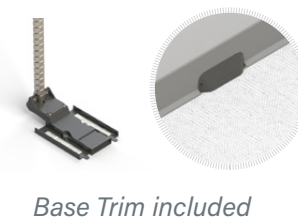


#### DESCRIPTION

##### 1. In-Wall Entrance Fitting

Use when cabling is running **INSIDE** the wall:

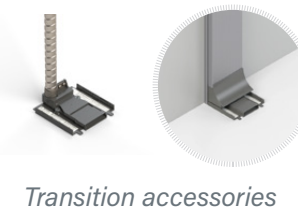
15' pre-wired conduit  
30' pre-wired conduit



##### 2. Surface-Mounted Entrance Fitting

Use when cabling is running **OUTSIDE** the wall:

3' pre-wired conduit, 2' Walltrac  
15' pre-wired conduit, 12' Walltrac  
30' pre-wired conduit, 12' Walltrac



*TIP: Use 3' pre-wired conduit, 2' Walltrac to connect to existing wall outlet boxes.*

*\*Walltrac only available in silver*

##### 3. Raceway Transition Entrance Fitting

Use when cabling is running **OUTSIDE** the wall, **THROUGH** a 2400 or 4000 series raceway:

Raceway Entrance Fitting with 3' pre-wired conduit, 4 circuit



##### 4. Poke-Thru Entrance Fitting

Use when cabling is in the **CENTER** of a space:

4" Poke-Thru Transition and compatible On-Floor Poke-Thru Entrance Fitting. Available for Powertracs and Datatracs in both Silver and Dark Gray finishes.



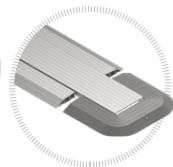
## B Raceway

Continue to build your raceways by connecting Powertracs and Power Hubs.

### Powertracs



Powertrac



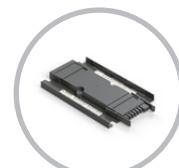
Complete your system with Top Covers, Transition Ramps, and End Ramps

#### DESCRIPTION

##### Powertrac

Pre-wired raceway segments available in multiple finishes and standard lengths:

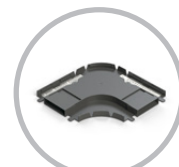
- 2' Powertrac Dark Gray
- 3' Powertrac Standard finish
- 4' Powertrac Silver
- 5' Powertrac Optional finish
- 6' Powertrac



Powertrac Extender

##### Powertrac Extender

Adds 6" to any of our standard Powertrac lengths



Powertrac Corner

##### Powertrac Corner

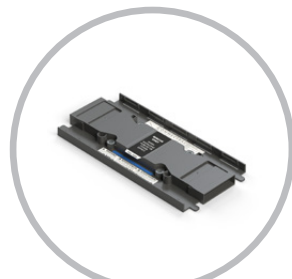
Allows raceway to make a 90° turn

### Power Hub

#### DESCRIPTION

##### Power Hub

Connects Powertracs & provides access for power devices



Power Hub

*TIP: For greater flexibility at minimal cost, add more Power Hubs and connect shorter Powertracs.*

## C Devices

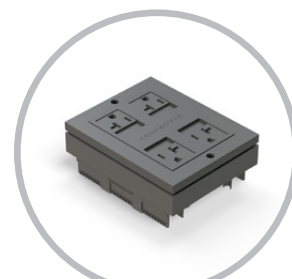
Equip your Flex raceway system with power & data devices.

### Power Devices

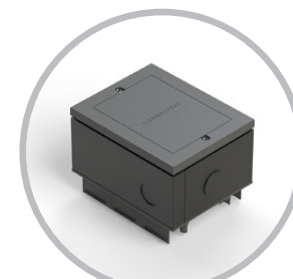
Choose which devices (if any) you want to snap into your Power Hubs.



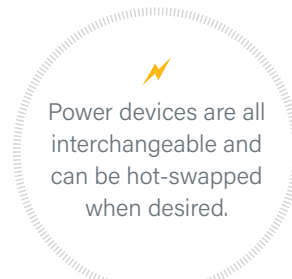
Hubcap



Receptacle Device



Hardwire Device



Power devices are all interchangeable and can be hot-swapped when desired.

#### Hubcap

Creates a walkable surface and makes power easily accessible for future needs

#### Receptacle Device

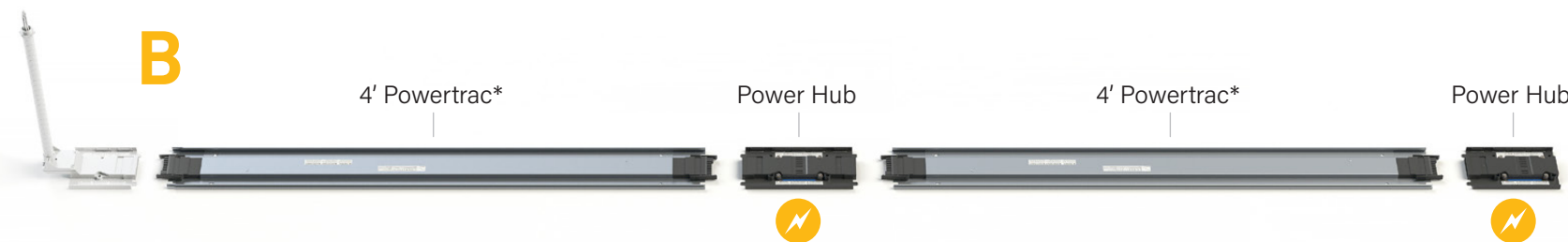
Quad device available in various 4-circuit options:

- All circuit 1
- All circuit 2
- All circuit 3
- All circuit 4
- 2-circuit 1, 2-circuit 2\*
- 2-circuit 3, 2-circuit 4\*
- 2-circuit 1, 2-circuit 4\*

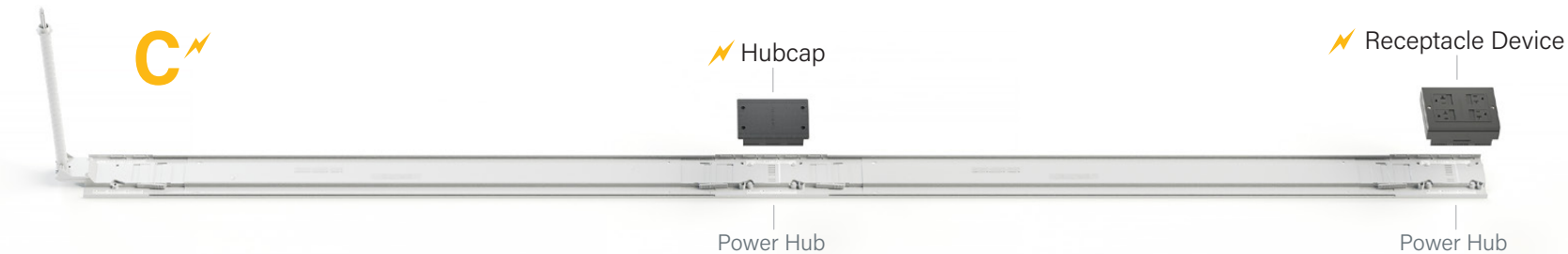
*\*Controlled devices available (see Technical Guide for more details)*

#### Hardwire Device

4-circuit monument that connects to most furniture base feeds



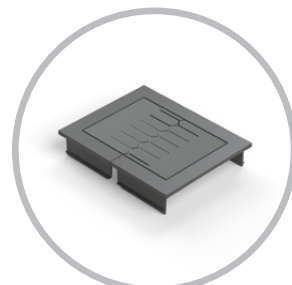
\*Powertrac measurements are based on the on-center distance between the Entrance Fitting and/or Power Hubs.



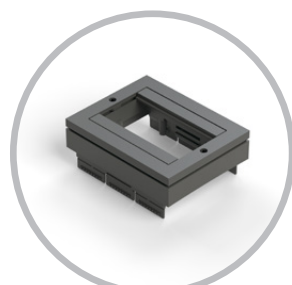
# C Devices

Equip your Flex raceway system with power & data devices.

**Data Devices** These devices go anywhere on the raceway.



Grommet



Data Device

Data devices easily snap next to any power device.

### DESCRIPTION

#### Grommet

Allows cables to enter/exit raceway

#### Data Device

Fits up to 8 low-voltage keystone modules



Data Device

# Optional Accessories

Enhance your raceways with these additional options.



### Accessories

#### DESCRIPTION

##### Vertical Wire Manager

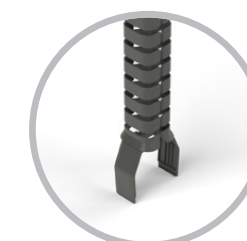
Attaches to any power or data device to manage cabling

##### Rough-In Frame

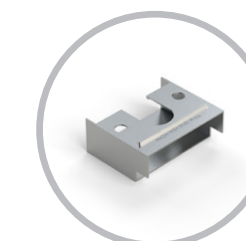
Installed before drywall to provide a rough opening for cabling

##### Extra Hubcap

Creates a walkable surface and makes power easily accessible for future needs



Vertical Wire Manager



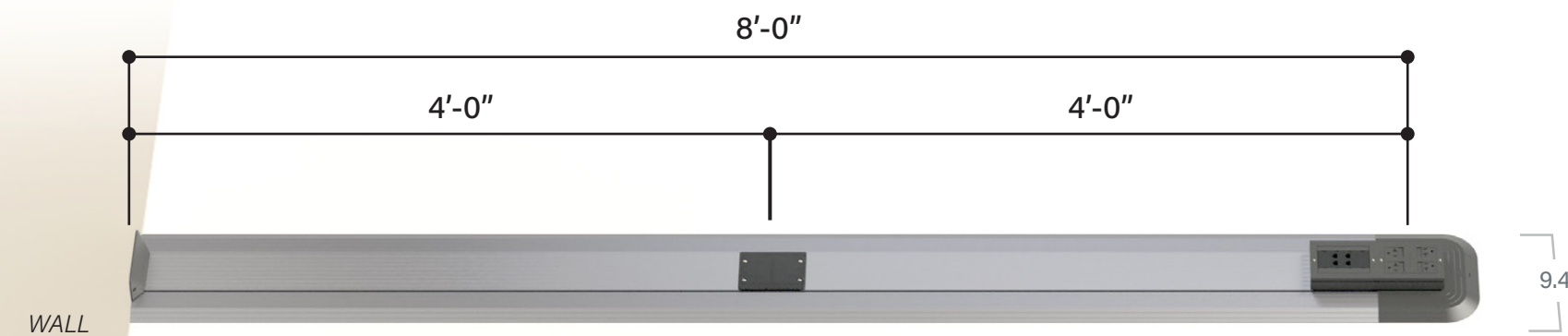
Rough-In Frame



Extra Hubcap

# Complete Raceway

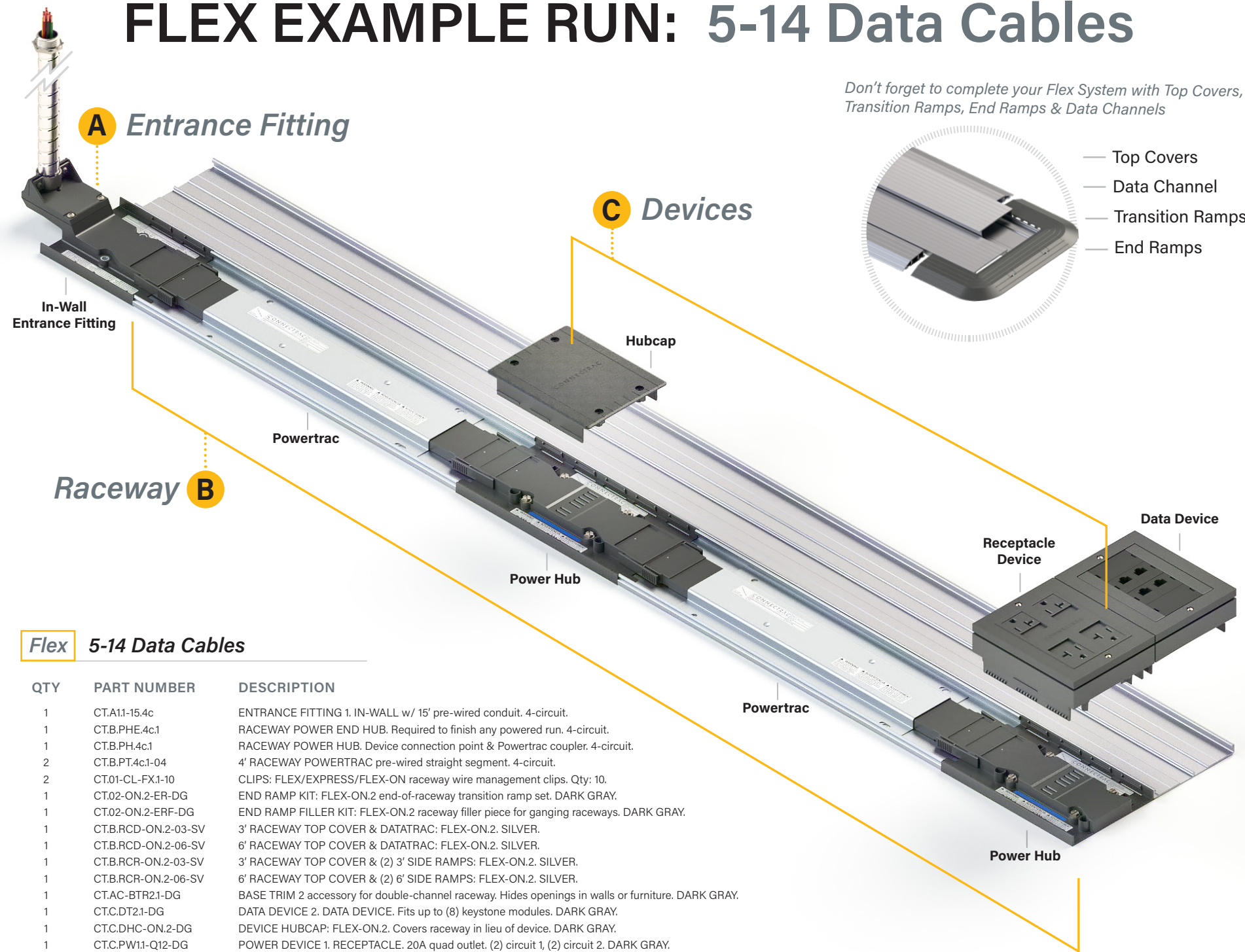
Shown with Top Covers, Transition Ramps, and End Ramps installed.



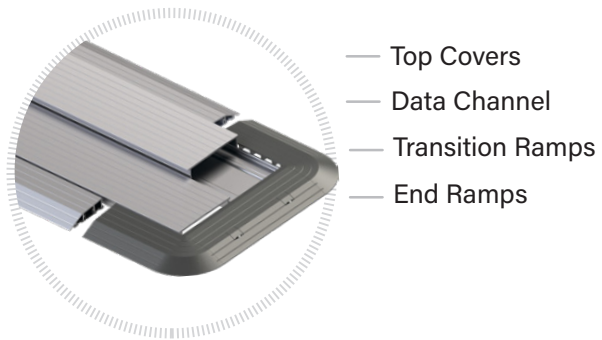
\*Silver finish shown here



# FLEX EXAMPLE RUN: 5-14 Data Cables



Don't forget to complete your Flex System with Top Covers, Transition Ramps, End Ramps & Data Channels

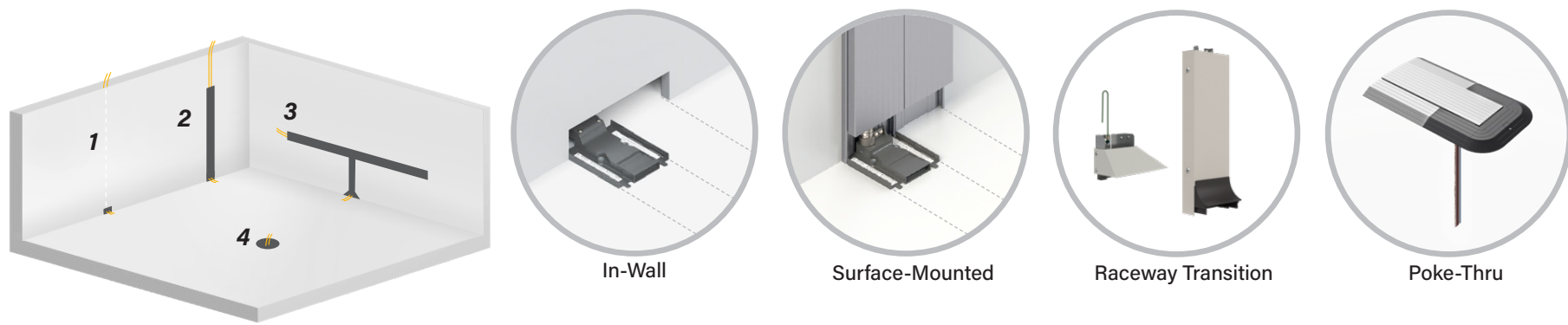


## Flex 5-14 Data Cables

QTY	PART NUMBER	DESCRIPTION
1	CT.A11-15.4c	ENTRANCE FITTING 1. IN-WALL w/ 15' pre-wired conduit. 4-circuit.
1	CT.B.PHE.4c.1	RACEWAY POWER END HUB. Required to finish any powered run. 4-circuit.
1	CT.B.PH.4c.1	RACEWAY POWER HUB. Device connection point & Powertrac coupler. 4-circuit.
2	CT.B.PT.4c.1-04	4' RACEWAY POWERTRAC pre-wired straight segment. 4-circuit.
2	CT.01-CL-FX.1-10	CLIPS: FLEX/EXPRESS/FLEX-ON raceway wire management clips. Qty: 10.
1	CT.02-ON.2-ER-DG	END RAMP KIT: FLEX-ON.2 end-of-raceway transition ramp set. DARK GRAY.
1	CT.02-ON.2-ERF-DG	END RAMP FILLER KIT: FLEX-ON.2 raceway filler piece for ganging raceways. DARK GRAY.
1	CT.B.RCD-ON.2-03-SV	3' RACEWAY TOP COVER & DATATRAC: FLEX-ON.2. SILVER.
1	CT.B.RCD-ON.2-06-SV	6' RACEWAY TOP COVER & DATATRAC: FLEX-ON.2. SILVER.
1	CT.B.RCR-ON.2-03-SV	3' RACEWAY TOP COVER & (2) 3' SIDE RAMPS: FLEX-ON.2. SILVER.
1	CT.B.RCR-ON.2-06-SV	6' RACEWAY TOP COVER & (2) 6' SIDE RAMPS: FLEX-ON.2. SILVER.
1	CT.AC-BTR2.1-DG	BASE TRIM 2 accessory for double-channel raceway. Hides openings in walls or furniture. DARK GRAY.
1	CT.C.DT2.1-DG	DATA DEVICE 2. DATA DEVICE. Fits up to (8) keystone modules. DARK GRAY.
1	CT.C.DHC-ON.2-DG	DEVICE HUBCAP: FLEX-ON.2. Covers raceway in lieu of device. DARK GRAY.
1	CT.C.PW1.1-Q12-DG	POWER DEVICE 1. RECEPTACLE. 20A quad outlet. (2) circuit 1, (2) circuit 2. DARK GRAY.

## A Entrance Fitting Choose where your Flex raceway will draw power from: Wall or Open Floor Space

### Entrance Fittings

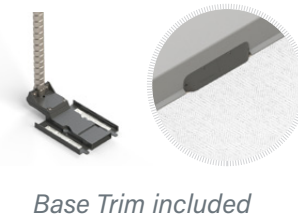


#### DESCRIPTION

##### 1. In-Wall Entrance Fitting

Use when cabling is running **INSIDE** the wall:

- 15' pre-wired conduit
- 30' pre-wired conduit

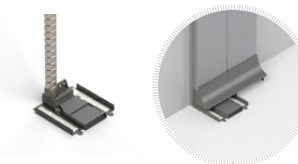


Base Trim included

##### 2. Surface-Mounted Entrance Fitting

Use when cabling is running **OUTSIDE** the wall:

- 3' pre-wired conduit, 2' Walltrac
- 15' pre-wired conduit, 12' Walltrac
- 30' pre-wired conduit, 12' Walltrac



Transition accessories included

\*Walltrac only available in silver

##### 3. Raceway Transition Entrance Fitting

Use when cabling is running **OUTSIDE** the wall, **THROUGH** a 2400 or 4000 series raceway:

- Raceway Entrance Fitting with 3' pre-wired conduit, 4 circuit



##### 4. Poke-Thru Entrance Fitting

Use when cabling is in the **CENTER** of a space:

- 4" Poke-Thru Transition and compatible On-Floor Poke-Thru Entrance Fitting. Available for Powertracs and Datatracs in both Silver and Dark Gray finishes.



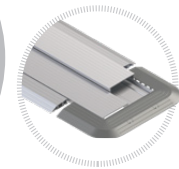


## B Raceway Continue to build your raceways by connecting Powertracs and Power Hubs.

### Powertracs



Powertrac



Complete your system with Top Covers, Transition Ramps, End Ramps & Data Channels

#### DESCRIPTION

##### Powertrac

Pre-wired raceway segments available in multiple finishes and standard lengths:

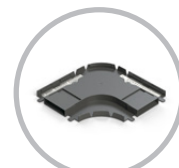
- 2' Powertrac Dark Gray
- 3' Powertrac Standard finish
- 4' Powertrac Silver
- 5' Powertrac Optional finish
- 6' Powertrac



Powertrac Extender

##### Powertrac Extender

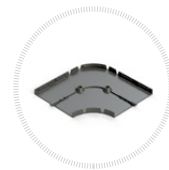
Adds 6" to any of our standard Powertrac lengths



Powertrac Corner

##### Powertrac Corner

Allows raceway to make a 90° turn



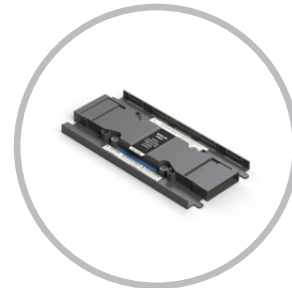
Datatrac Corner included

### Power Hub

#### DESCRIPTION

##### Power Hub

Connects Powertracs & provides access for power devices



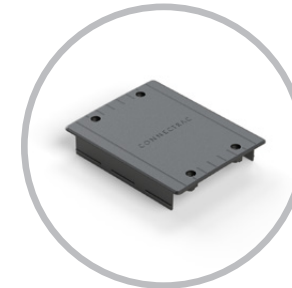
Power Hub

*TIP: For greater flexibility at minimal cost, add more Power Hubs and connect shorter Powertracs.*

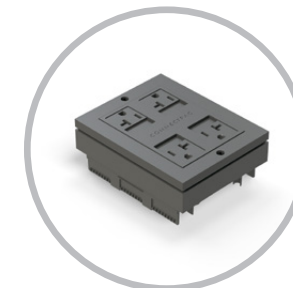
## C Devices Equip your Flex raceway system with power & data devices.

### Power Devices

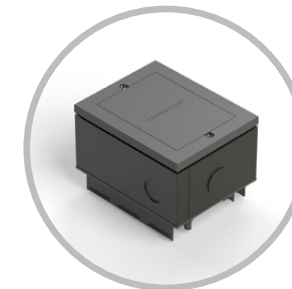
Choose which devices (if any) you want to snap into your Power Hubs.



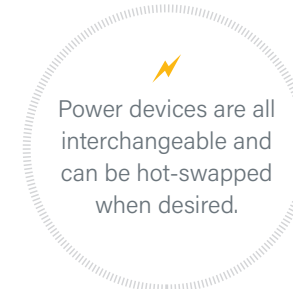
Hubcap



Receptacle Device



Hardwire Device



Power devices are all interchangeable and can be hot-swapped when desired.

##### Hubcap

Creates a walkable surface and makes power easily accessible for future needs

##### Receptacle Device

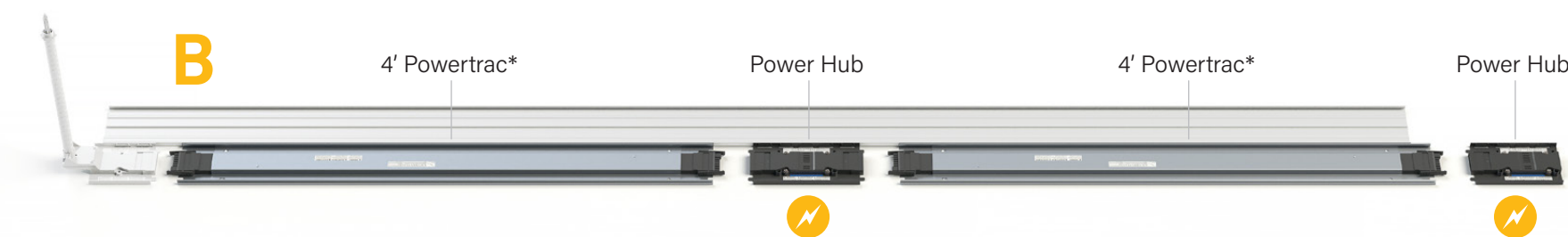
Quad device available in various 4-circuit options:

- All circuit 1
- All circuit 2
- All circuit 3
- All circuit 4
- 2-circuit 1, 2-circuit 2\*
- 2-circuit 3, 2-circuit 4\*
- 2-circuit 1, 2-circuit 4\*

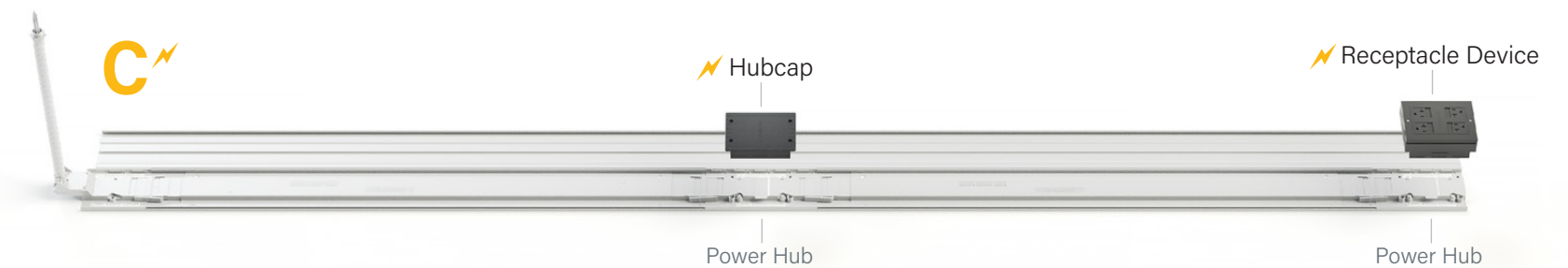
*\*Controlled devices available (see Technical Guide for more details)*

##### Hardwire Device

4-circuit monument that connects to most furniture base feeds



*\*Powertrac measurements are based on the on-center distance between the Entrance Fitting and/or Power Hubs.*

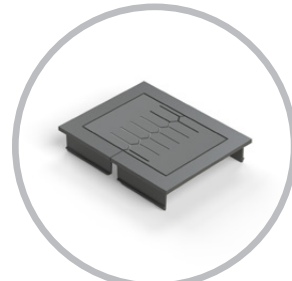




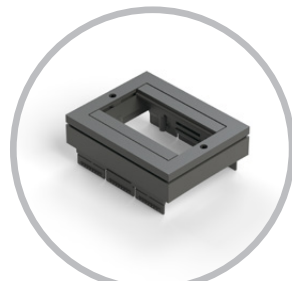
# C Devices

Equip your Flex raceway system with power & data devices.

**Data Devices** These devices go anywhere on the raceway.



Grommet



Data Device

Data Devices easily snap next to any Power Device.

### DESCRIPTION

#### Grommet

Allows cables to enter/exit raceway

#### Data Device

Fits up to 8 low-voltage keystone modules



Data Device

# Optional Accessories

Enhance your raceways with these additional options.



### Accessories

#### DESCRIPTION

#### Vertical Wire Manager

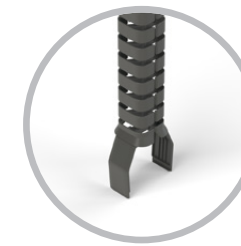
Attaches to any power or data device to manage cabling

#### Rough-In Frame

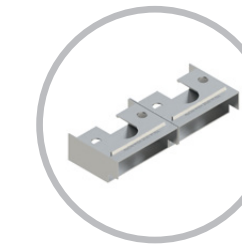
Installed before drywall to provide a rough opening for cabling

#### Extra Hubcap

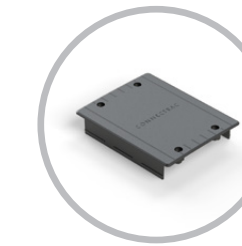
Creates a walkable surface and makes power easily accessible for future needs



Vertical Wire Manager



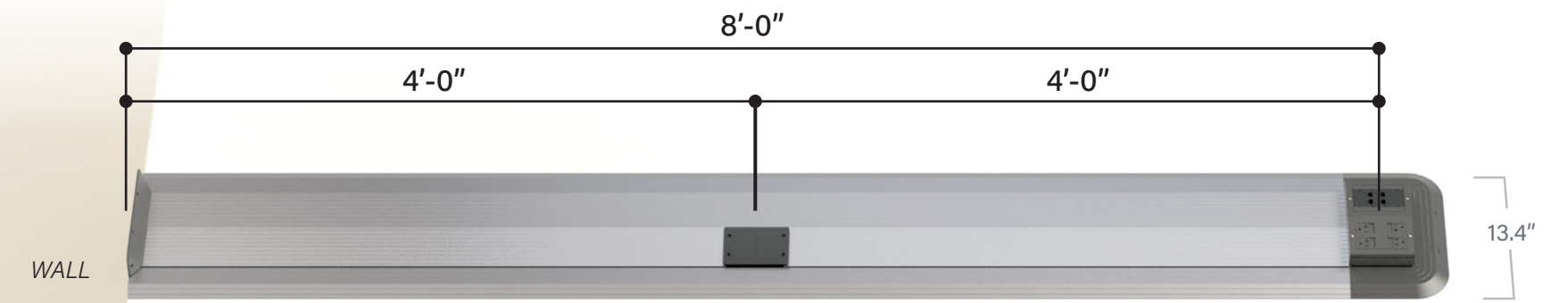
Rough-In Frame



Extra Hubcap

# Complete Raceway

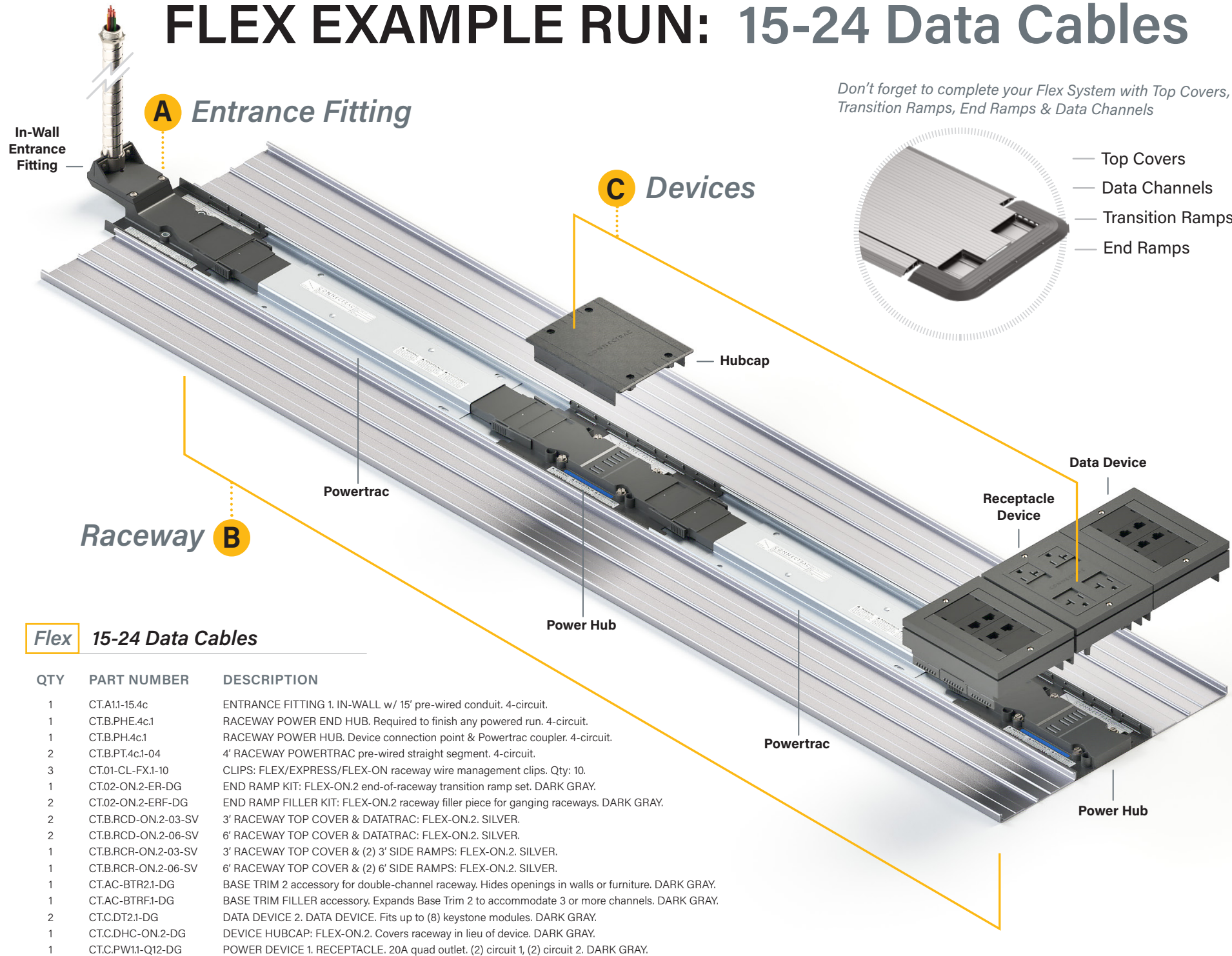
Shown with Top Covers, Transition Ramps, and End Ramps installed.



\*Silver finish shown here



# FLEX EXAMPLE RUN: 15-24 Data Cables

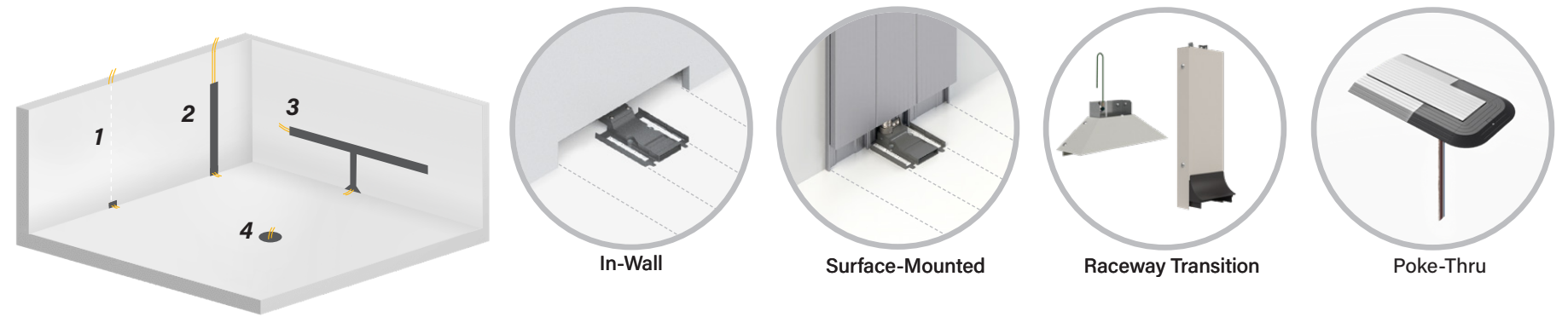


## Flex 15-24 Data Cables

QTY	PART NUMBER	DESCRIPTION
1	CT.A11-15.4c	ENTRANCE FITTING 1. IN-WALL w/ 15' pre-wired conduit. 4-circuit.
1	CT.B.PHE.4c1	RACEWAY POWER END HUB. Required to finish any powered run. 4-circuit.
1	CT.B.PH.4c1	RACEWAY POWER HUB. Device connection point & Powertrac coupler. 4-circuit.
2	CT.B.PT.4c1-04	4' RACEWAY POWERTRAC pre-wired straight segment. 4-circuit.
3	CT.01-CL-FX.1-10	CLIPS: FLEX/EXPRESS/FLEX-ON raceway wire management clips. Qty: 10.
1	CT.02-ON.2-ER-DG	END RAMP KIT: FLEX-ON.2 end-of-raceway transition ramp set. DARK GRAY.
2	CT.02-ON.2-ERF-DG	END RAMP FILLER KIT: FLEX-ON.2 raceway filler piece for ganging raceways. DARK GRAY.
2	CT.B.RCD-ON.2-03-SV	3' RACEWAY TOP COVER & DATATRAC: FLEX-ON.2. SILVER.
2	CT.B.RCD-ON.2-06-SV	6' RACEWAY TOP COVER & DATATRAC: FLEX-ON.2. SILVER.
1	CT.B.RCR-ON.2-03-SV	3' RACEWAY TOP COVER & (2) 3' SIDE RAMPS: FLEX-ON.2. SILVER.
1	CT.B.RCR-ON.2-06-SV	6' RACEWAY TOP COVER & (2) 6' SIDE RAMPS: FLEX-ON.2. SILVER.
1	CT.AC-BTR2.1-DG	BASE TRIM 2 accessory for double-channel raceway. Hides openings in walls or furniture. DARK GRAY.
1	CT.AC-BTRF.1-DG	BASE TRIM FILLER accessory. Expands Base Trim 2 to accommodate 3 or more channels. DARK GRAY.
2	CT.C.DT2.1-DG	DATA DEVICE 2. DATA DEVICE. Fits up to (8) keystone modules. DARK GRAY.
1	CT.C.DHC-ON.2-DG	DEVICE HUBCAP: FLEX-ON.2. Covers raceway in lieu of device. DARK GRAY.
1	CT.C.PW1.1-Q12-DG	POWER DEVICE 1. RECEPTACLE. 20A quad outlet. (2) circuit 1, (2) circuit 2. DARK GRAY.

## A Entrance Fitting Choose where your Flex raceway will draw power from: Wall or Open Floor Space

### Entrance Fittings

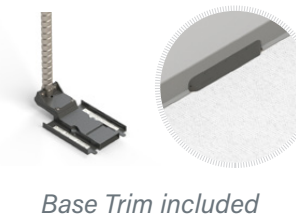


#### DESCRIPTION

##### 1. In-Wall Entrance Fitting

Use when cabling is running **INSIDE** the wall:

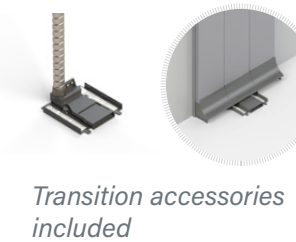
- 15' pre-wired conduit
- 30' pre-wired conduit



##### 2. Surface-Mounted Entrance Fitting

Use when cabling is running **OUTSIDE** the wall:

- 3' pre-wired conduit, 2' Walltrac
- 15' pre-wired conduit, 12' Walltrac
- 30' pre-wired conduit, 12' Walltrac



##### 3. Raceway Transition Entrance Fitting

Use when cabling is running **OUTSIDE** the wall, **THROUGH** a 2400 or 4000 series raceway:

- Raceway Entrance Fitting with 3' pre-wired conduit, 4 circuit



##### 4. Poke-Thru Entrance Fitting

Use when cabling is in the **CENTER** of a space:

- 4" Poke-Thru Transition and compatible On-Floor Poke-Thru Entrance Fitting. Available for Powertracs and Datatracs in both Silver and Dark Gray finishes.





## B Raceway

Continue to build your raceways by connecting Powertracs and Power Hubs.

### Powertracs



Powertrac



Complete your system with Top Covers, Transition Ramps, End Ramps & Data Channels

#### DESCRIPTION

##### Powertrac

Pre-wired raceway segments available in multiple finishes and standard lengths:

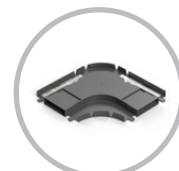
- 2' Powertrac Dark Gray
- 3' Powertrac Standard finish
- 4' Powertrac Silver
- 5' Powertrac Optional finish
- 6' Powertrac



Powertrac Extender

##### Powertrac Extender

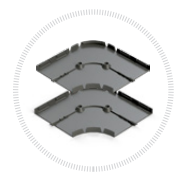
Adds 6" to any of our standard Powertrac lengths



Powertrac Corner

##### Powertrac Corner

Allows raceway to make a 90° turn



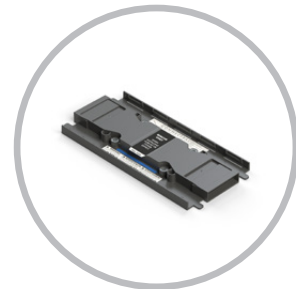
Datatrac Corners included

### Power Hub

#### DESCRIPTION

##### Power Hub

Connects Powertracs & provides access for power devices



Power Hub

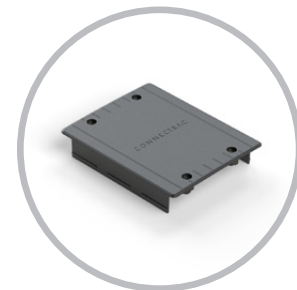
TIP: For greater flexibility at minimal cost, add more Power Hubs and connect shorter Powertracs.

## C Devices

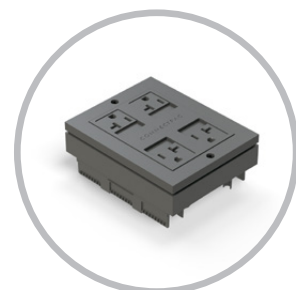
Equip your Flex raceway system with power & data devices.

### Power Devices

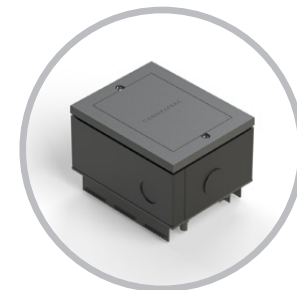
Choose which devices (if any) you want to snap into your Power Hubs.



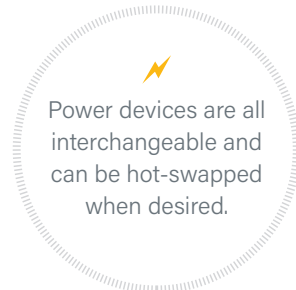
Hubcap



Receptacle Device



Hardwire Device



Power devices are all interchangeable and can be hot-swapped when desired.

##### Hubcap

Creates a walkable surface and makes power easily accessible for future needs

##### Receptacle Device

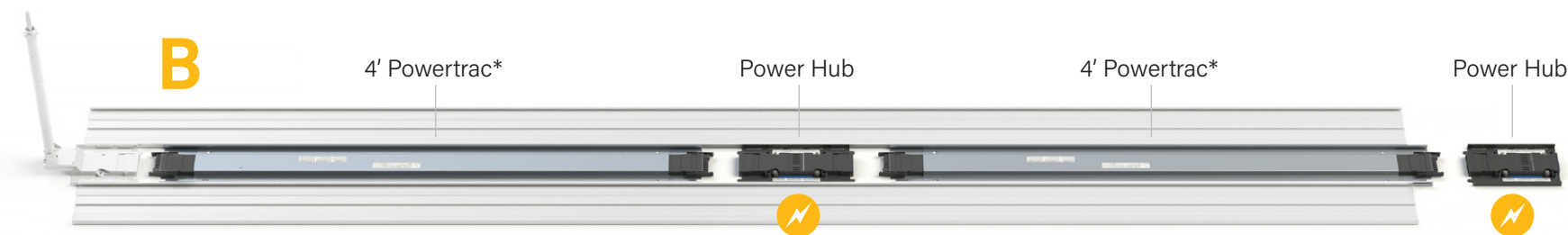
Quad device available in various 4-circuit options:

- All circuit 1
- All circuit 2
- All circuit 3
- All circuit 4
- 2-circuit 1, 2-circuit 2\*
- 2-circuit 3, 2-circuit 4\*
- 2-circuit 1, 2-circuit 4\*

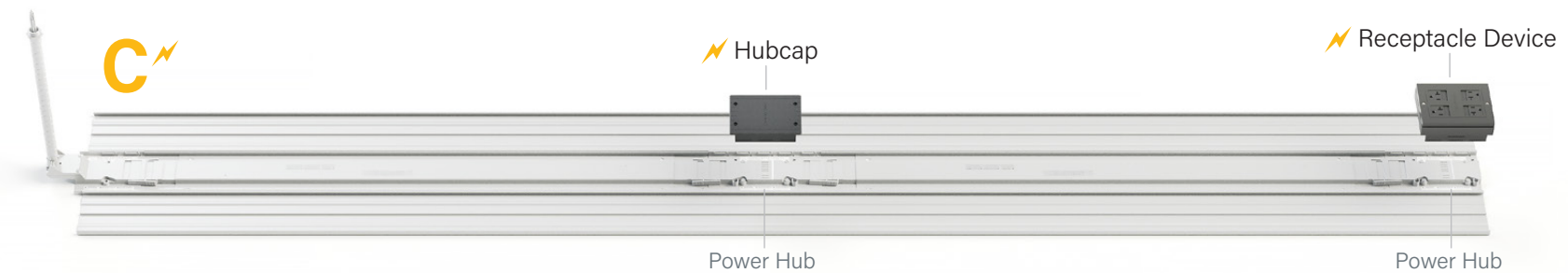
\*Controlled devices available (see Technical Guide for more details)

##### Hardwire Device

4-circuit monument that connects to most furniture base feeds



\*Powertrac measurements are based on the on-center distance between the Entrance Fitting and/or Power Hubs.

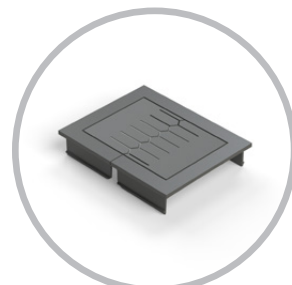




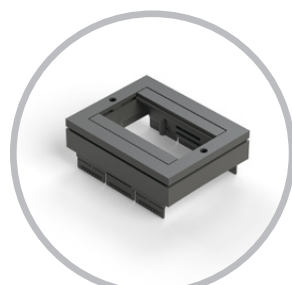
# C Devices

Equip your Flex raceway system with power & data devices.

**Data Devices** These devices go anywhere on the raceway.



Grommet



Data Device

Data devices easily snap next to any power device.

### DESCRIPTION

#### Grommet

Allows cables to enter/exit raceway

#### Data Device

Fits up to 8 low-voltage keystone modules



# Optional Accessories

Enhance your raceways with these additional options.



### Accessories

#### DESCRIPTION

##### Vertical Wire Manager

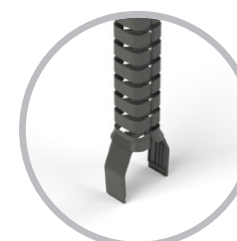
Attaches to any power or data device to manage cabling

##### Rough-In Frame

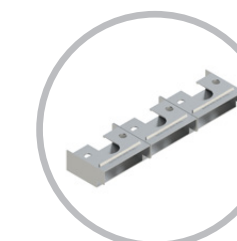
Installed before drywall to provide a rough opening for cabling

##### Extra Hubcap

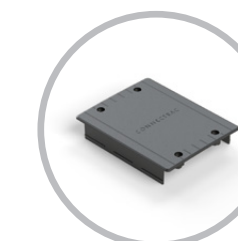
Creates a walkable surface and makes power easily accessible for future needs



Vertical Wire Manager



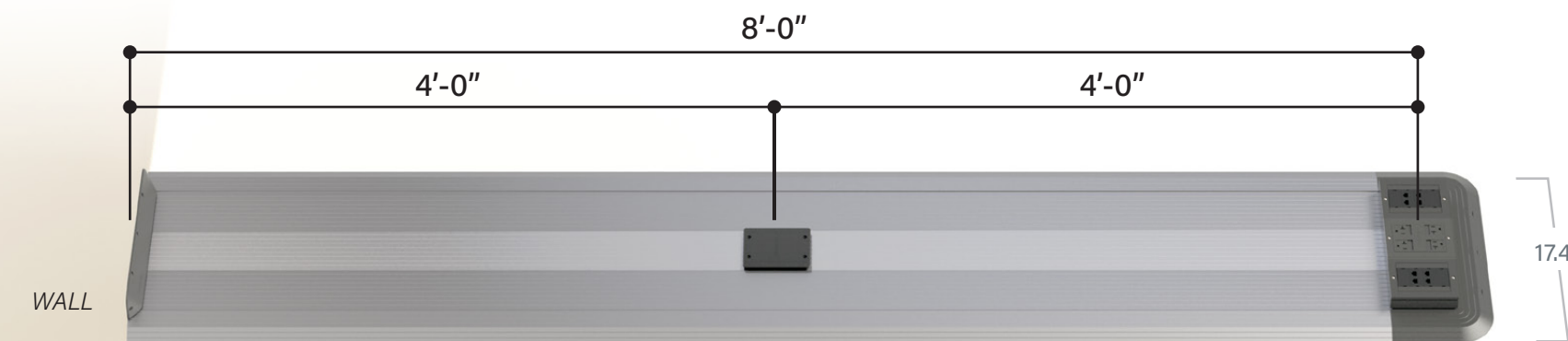
Rough-In Frame



Extra Hubcap

# Complete Raceway

Shown with Top Covers, Transition Ramps, and End Ramps installed.



\*Silver finish shown here



# CONNECTRAC.

A brand of  **legrand**

8707 Chancellor Row

Dallas, Texas 75247

1.877.480.5637

[connectrac.com](http://connectrac.com)

FOLLOW US

