

Fish ID

For Florida Sea Base and the
Brinton Environmental Center

Welcome to the Florida National High Adventure Sea Base. Whether sailing the blue waters, snorkeling the reefs, or fishing offshore, your crew will encounter many species of marine life. Hopefully, with the help of this disc, your crew will be prepared and able to identify many of the wonderful creatures you will see.

Reef Fish



Queen Angelfish, *Holacanthus ciliaris*



Blue Angelfish, *Holacanthus bermudensis*



Blue Angelfish vs. Queen Angelfish

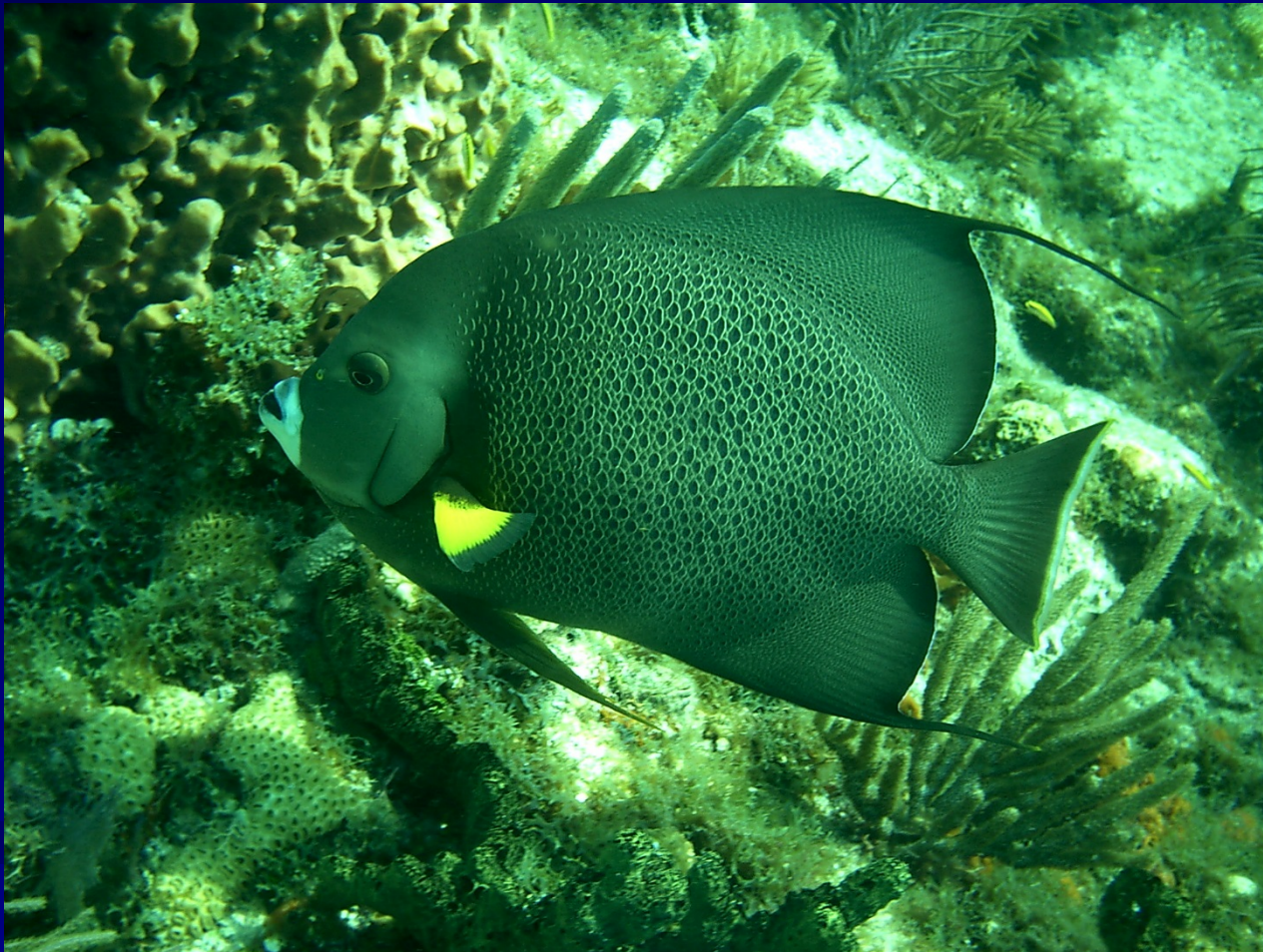


- The Blue Angelfish closely resembles the Queen Angelfish, but it is lacking the dark circular crown just above the eyes.

French Angelfish, Pomacanthus paru



Gray Angelfish, *Pomacanthus arcuatus*



Gray Angelfish vs. French Angelfish



- The major difference between these two adults are the color in their scales. The Gray angelfish has white and the French angelfish has yellow.

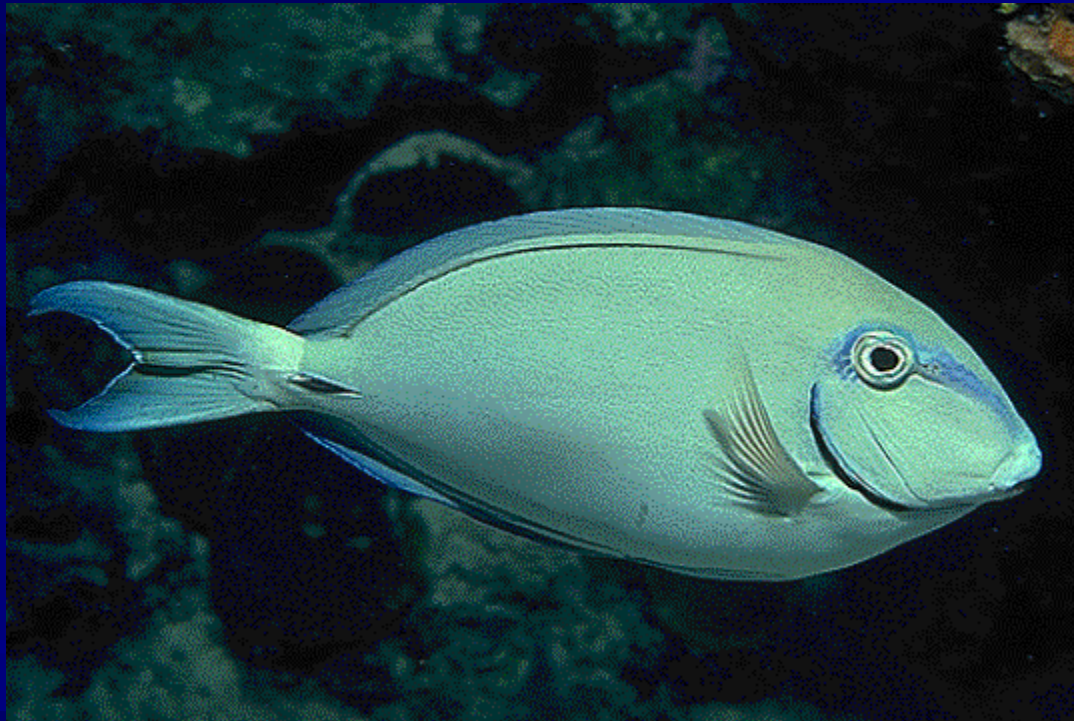
Rock Beauty, *Holacanthus tricolor*



Blue Tang, *Acanthurus coeruleus*



Ocean Surgefish, *Acanthurus bahianus*



Doctorfish, *Acanthurus chirurgus*

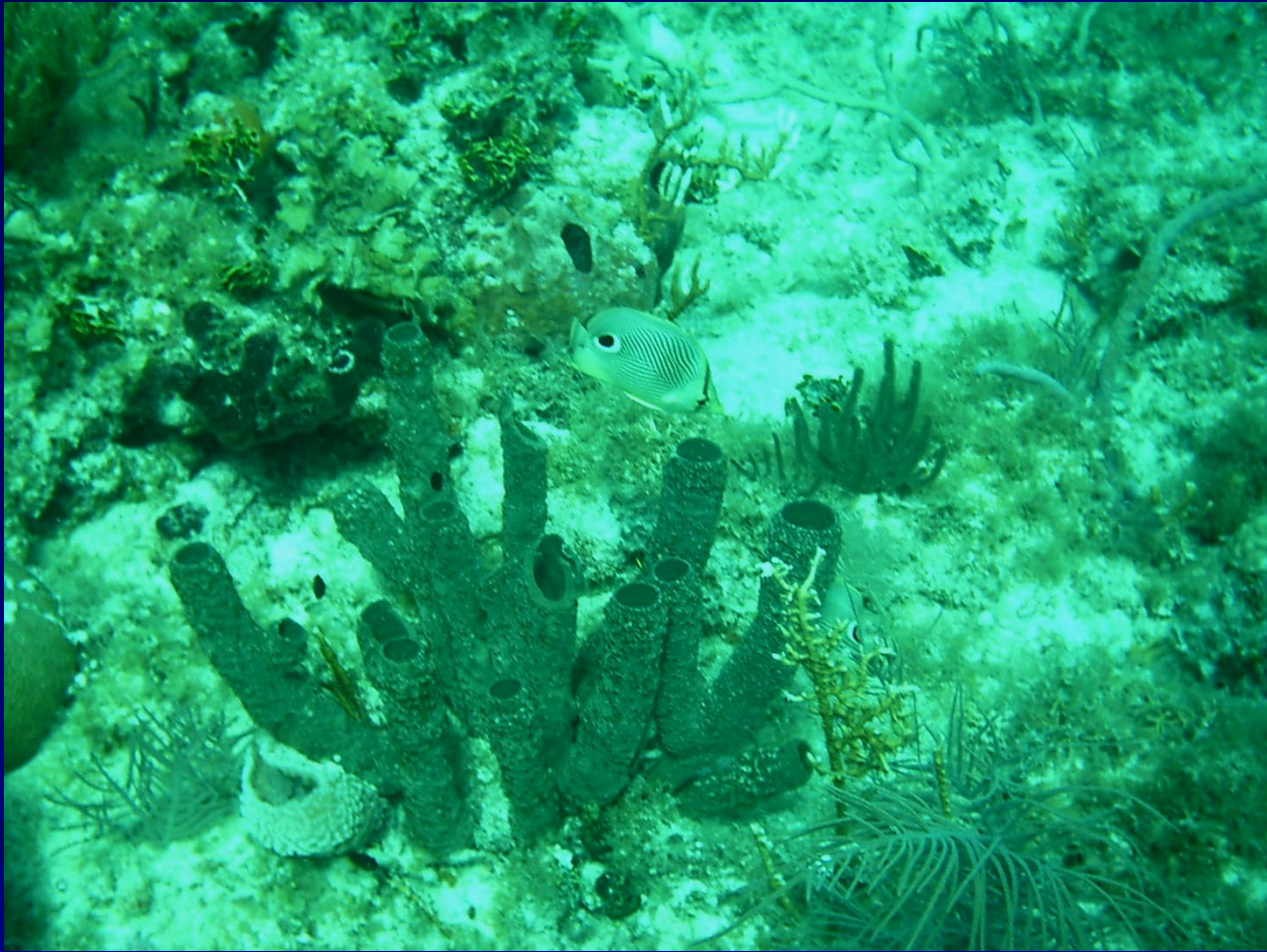
- The Blue Tang, Ocean Surgeonfish, and the Doctorfish all possess a concealed weapon. At the base of their tail, on both sides, they possess a spine. A quick swipe of the tail and the intruder can be slashed open.



Banded Butterfly, *Chaetodon sedentarius*



Four-eye Butterfly, *Chaetodon capistratus*



Spotfin Butterfly, *Chaetodon ocellatus*



Longnose Butterfly, *Chaetodon aculeatus*



Reef Butterfly, *Chaetodon sedentarius*



Yellowtail Damsel, *Microspathodon chrysurus*



Sergeant Major, *Abudefduf saxatilis*



Brown Chromis, *Chromis multilineatus*



Blue Chromis, *Chromis cyaneus*



Schoolmaster Snapper, *Lutjanus apodus*



Gray Snapper, *Lutjanus griseus*



Yellowtail Snapper, *Ocyurus chrysurus*



Stoplight Parrotfish, *Sparisoma viride*



Redband Parrotfish, *Sparisoma aurofrenatum*



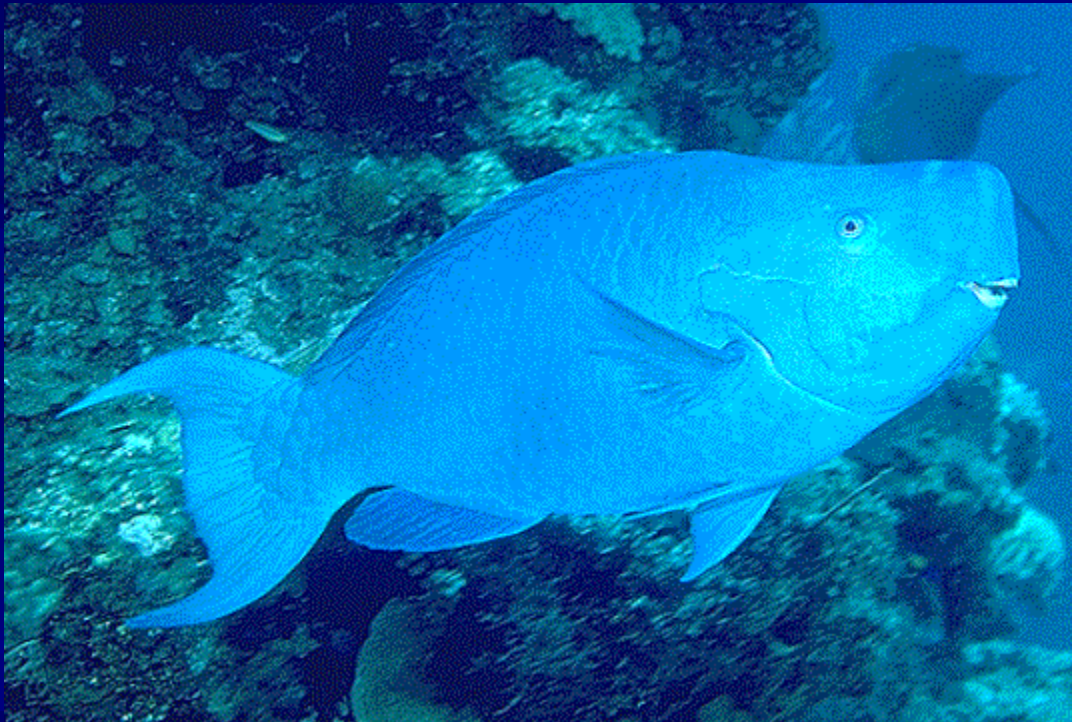
Queen Parrotfish, Scarus vetula



Princess Parrotfish, *Scarus taeniopterus*



Blue Parrotfish, *Scarus coeruleus*



Midnight Parrotfish, *Scarus coelestinus*



Bluehead Wrasse, *Thalassoma bifasciatum*



Spanish Hogfish, *Bodianus rufus*



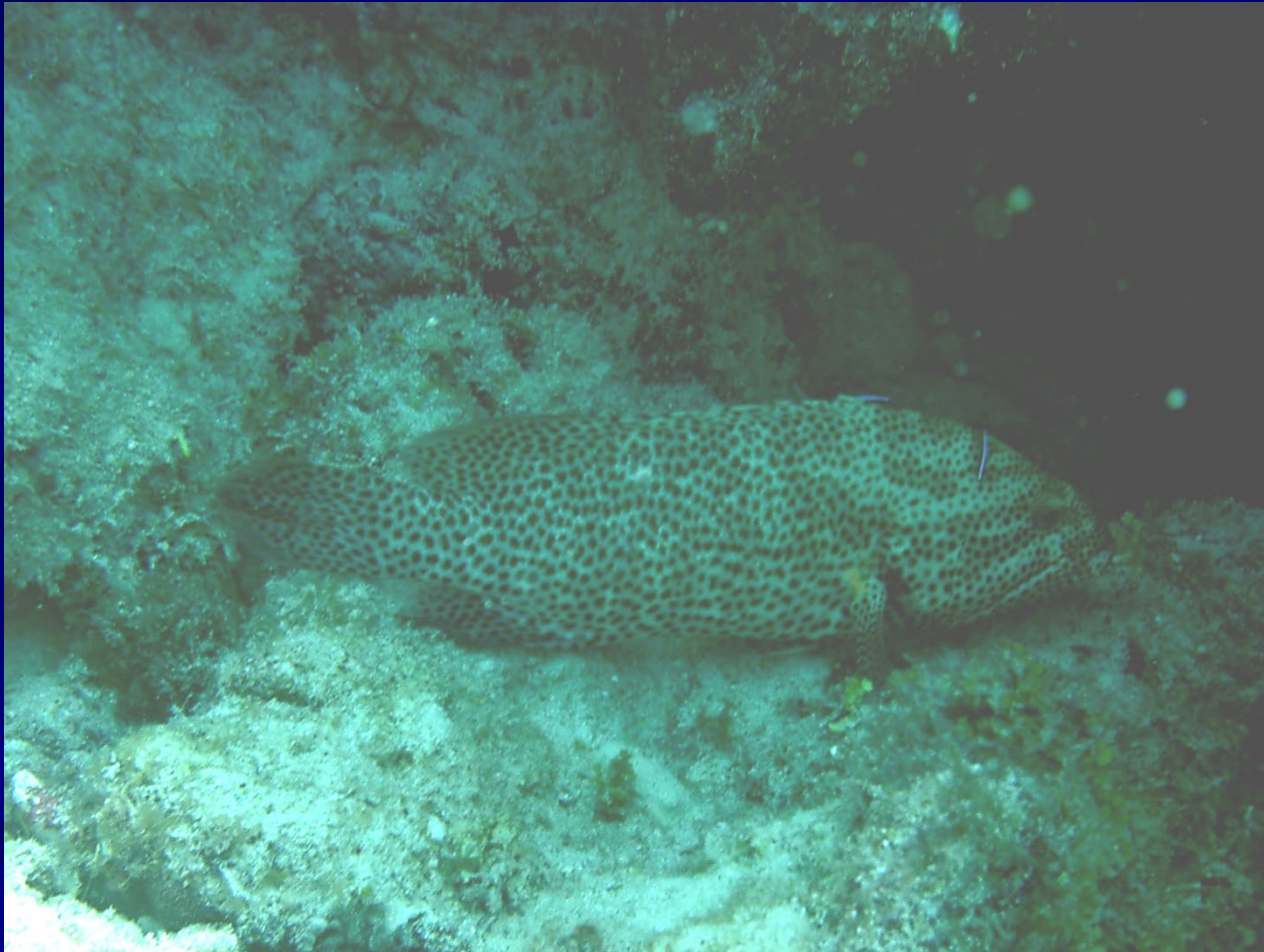
Nassau Grouper, *Epinephelus striatus*



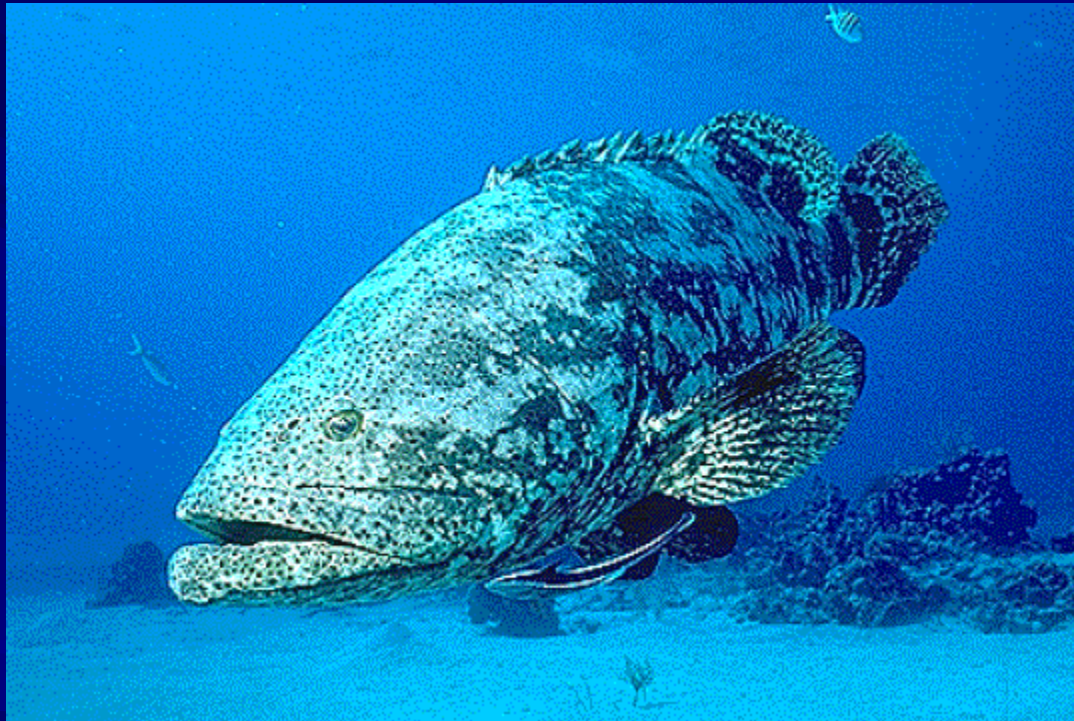
Black Grouper, *Mycteroperca bonaci*



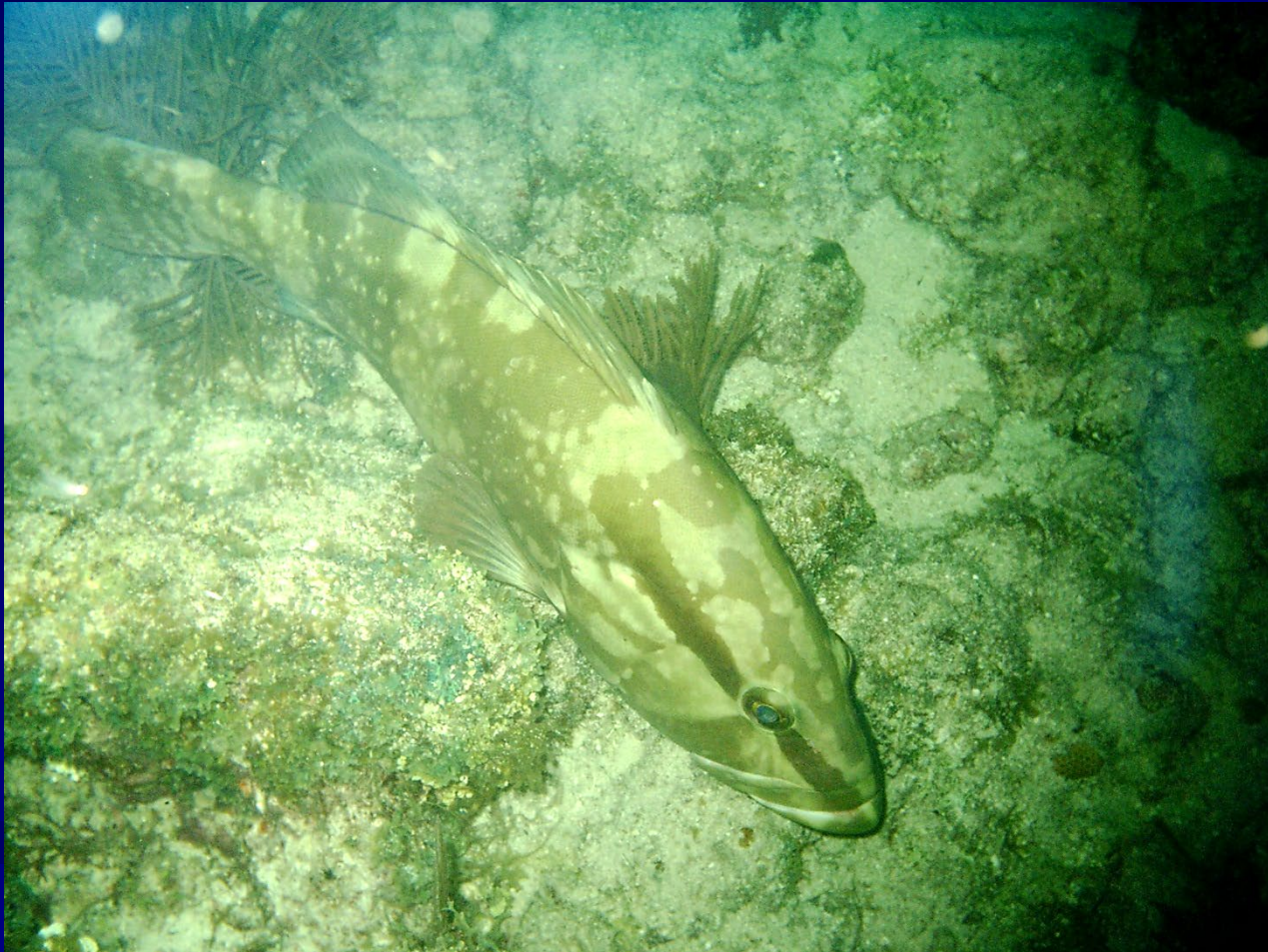
Graysby, *Epinephelus cruentatus*



Goliath Grouper, *Epinephelus itajara*



Red Grouper, *Epinephelus morio*



Green Moray, *Gymnothorax funebris*



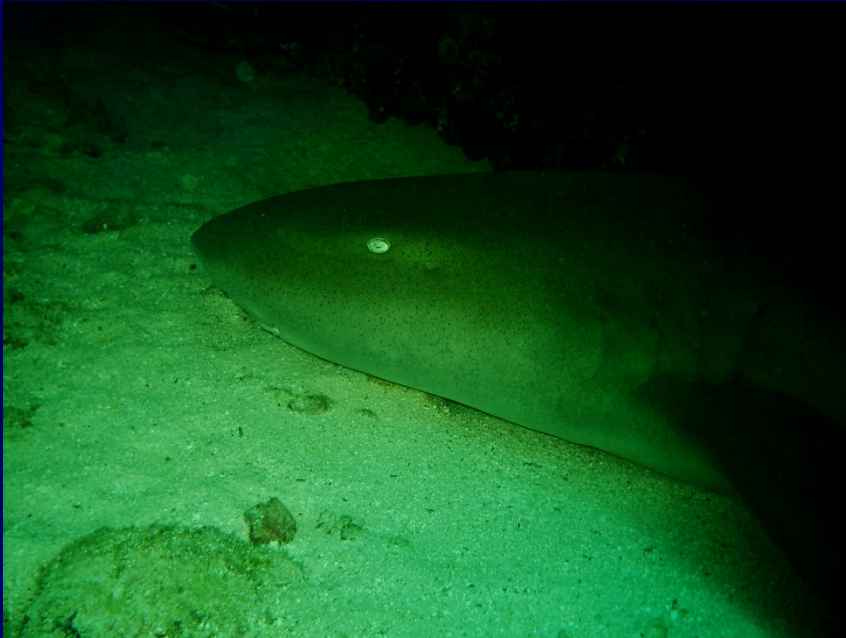
Spotted Moray, *Gymnothorax moringa*



Goldentail Moray, *Muraena miliaris*



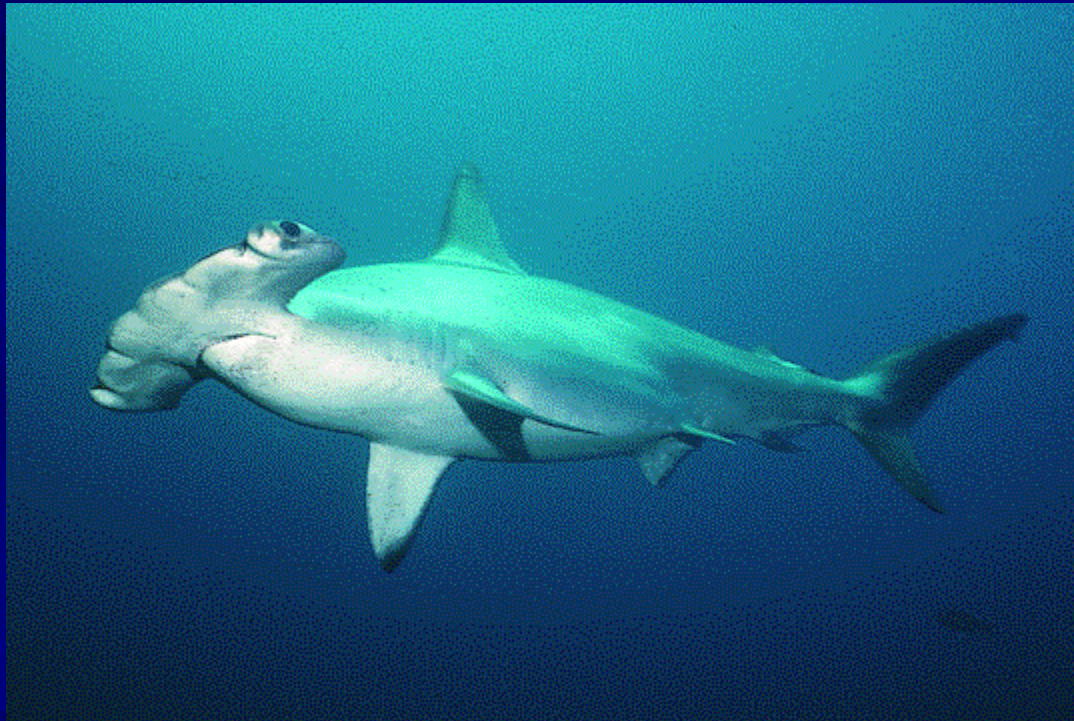
Nurse Shark, *Ginglymostoma cirratum*



Bonnethead Shark,



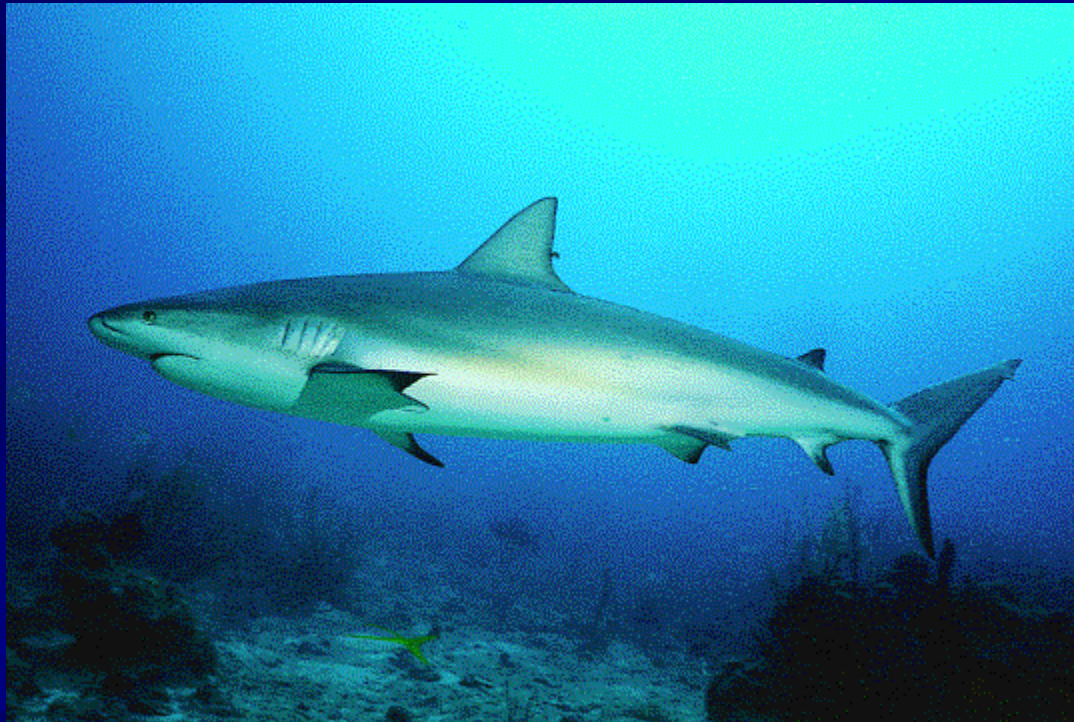
Hammerhead, *Sphyrna mokarran*



Lemon Shark, *Negaprion brevirostris*



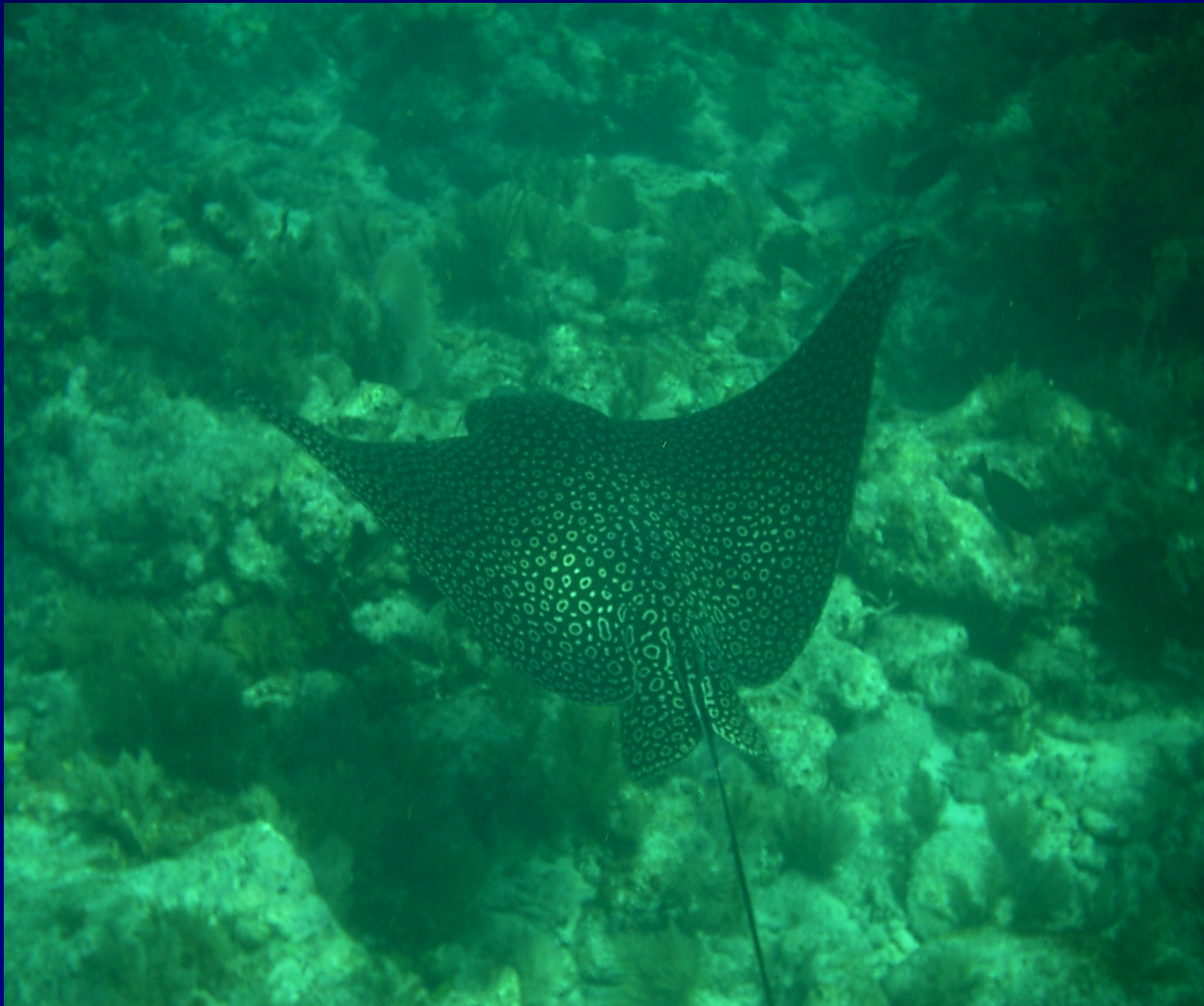
Reef Shark,



Bull Shark, *Carcharhinus leucas*



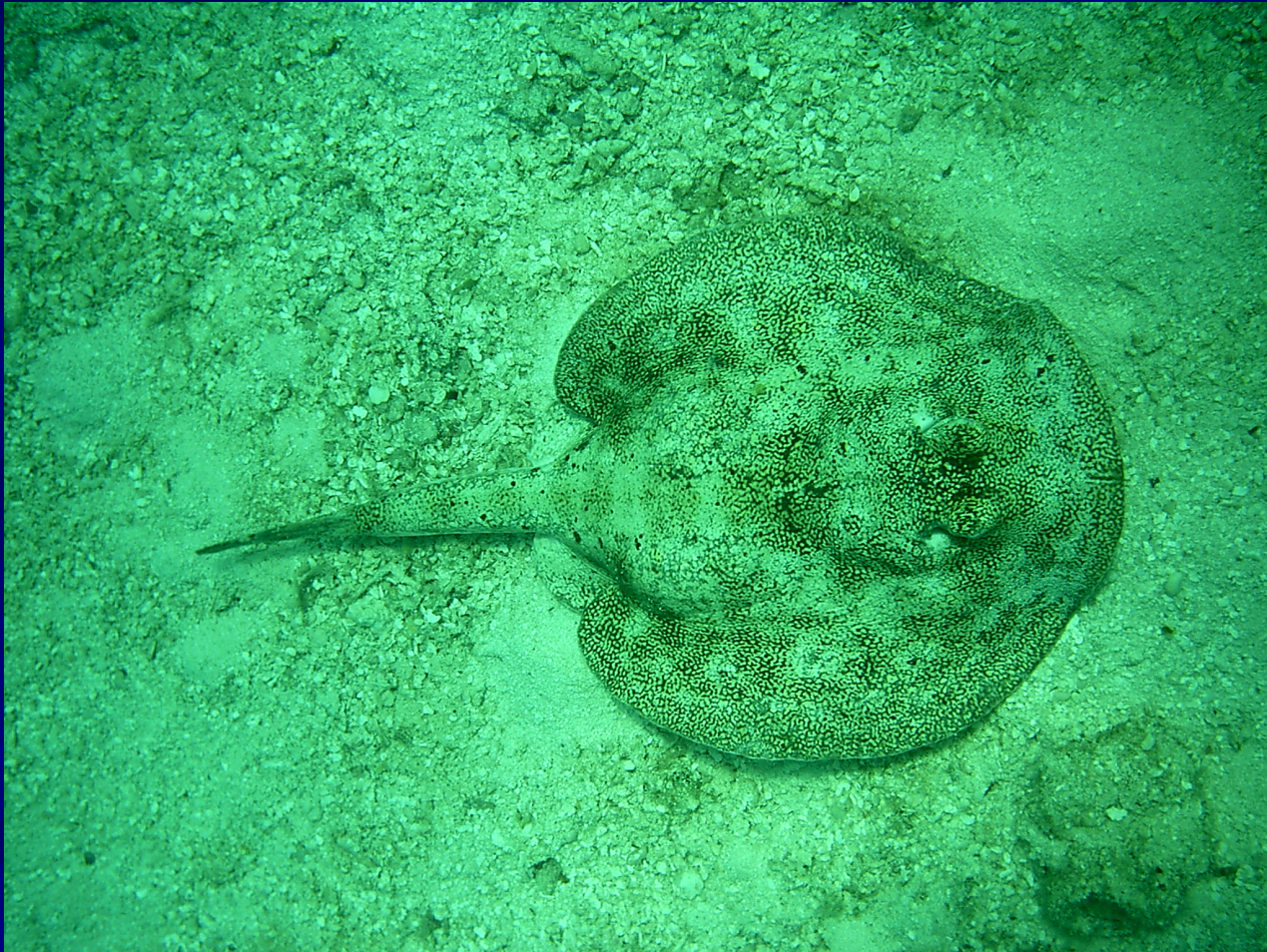
Spotted Eagle Ray, *Aetobatus narinari*



Southern Stingray, *Dasyatis americana*



Yellow Stingray, *Urolophus jamaicensis*



French Grunt, *Haemulon flavolineatum*



Bluestriped Grunt, *Haemulon sciurus*



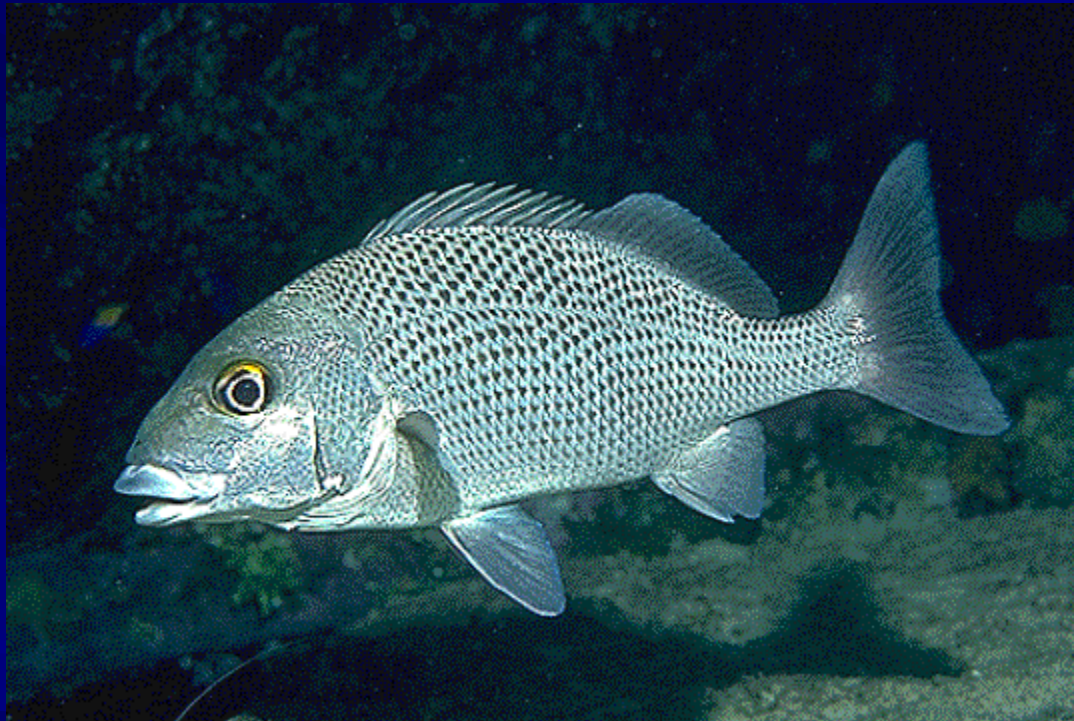
Porkfish, *Anisotremus surinamensis*



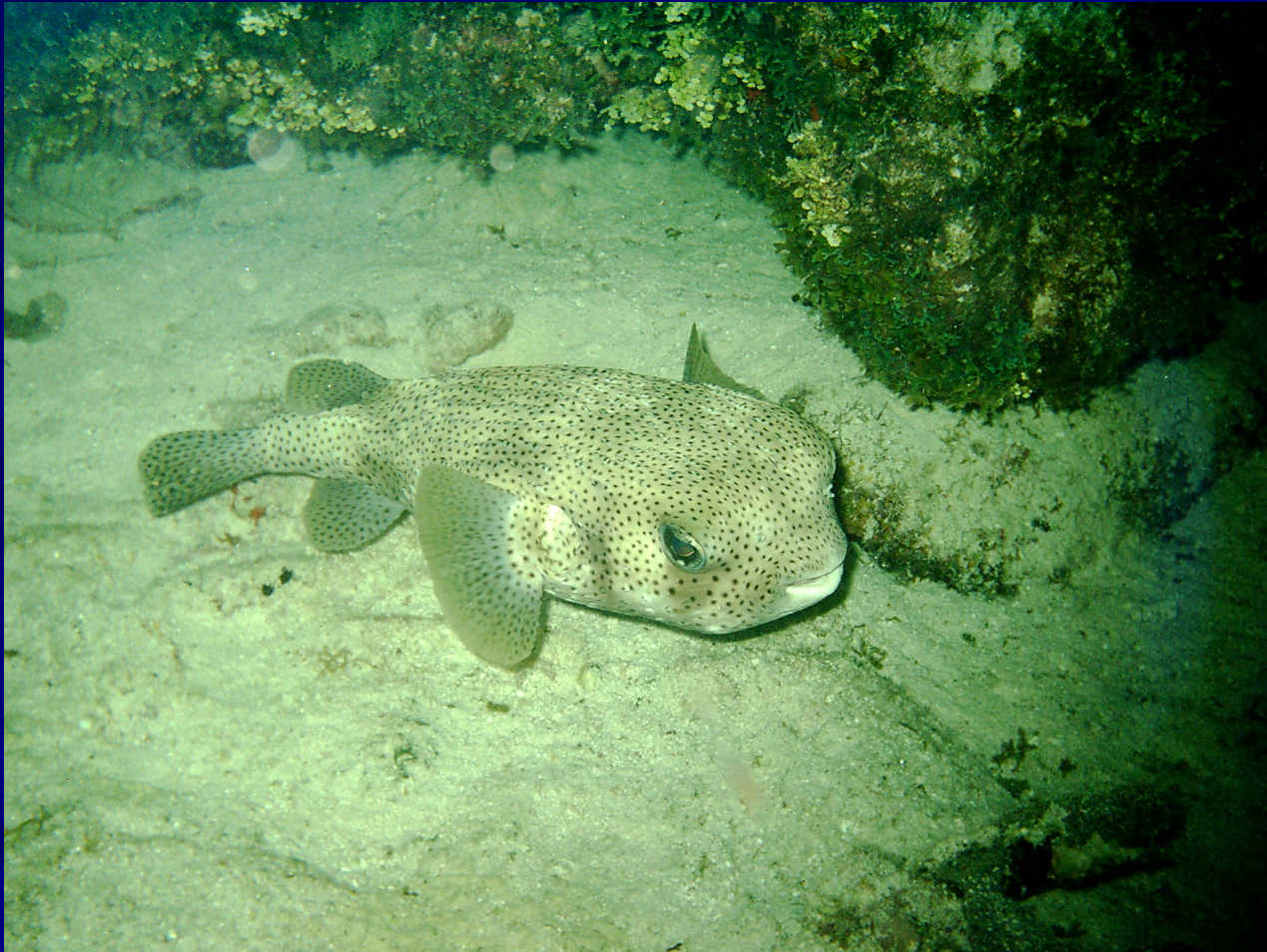
Spanish Grunt, *Haemulon macrostomum*



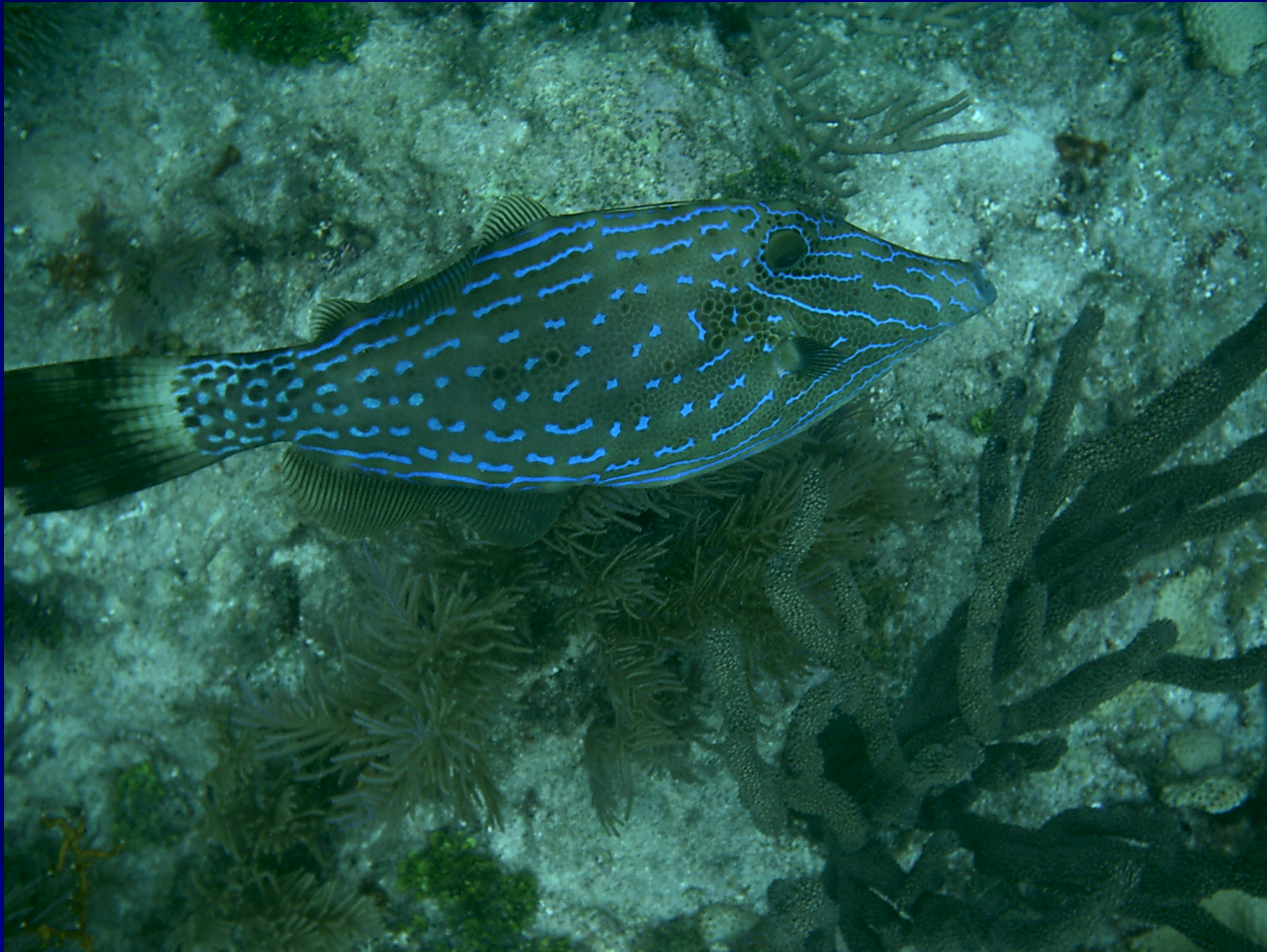
Sailors Choice, *Haemulon parrai*



Porcupinefish, *Diodon hystrix*



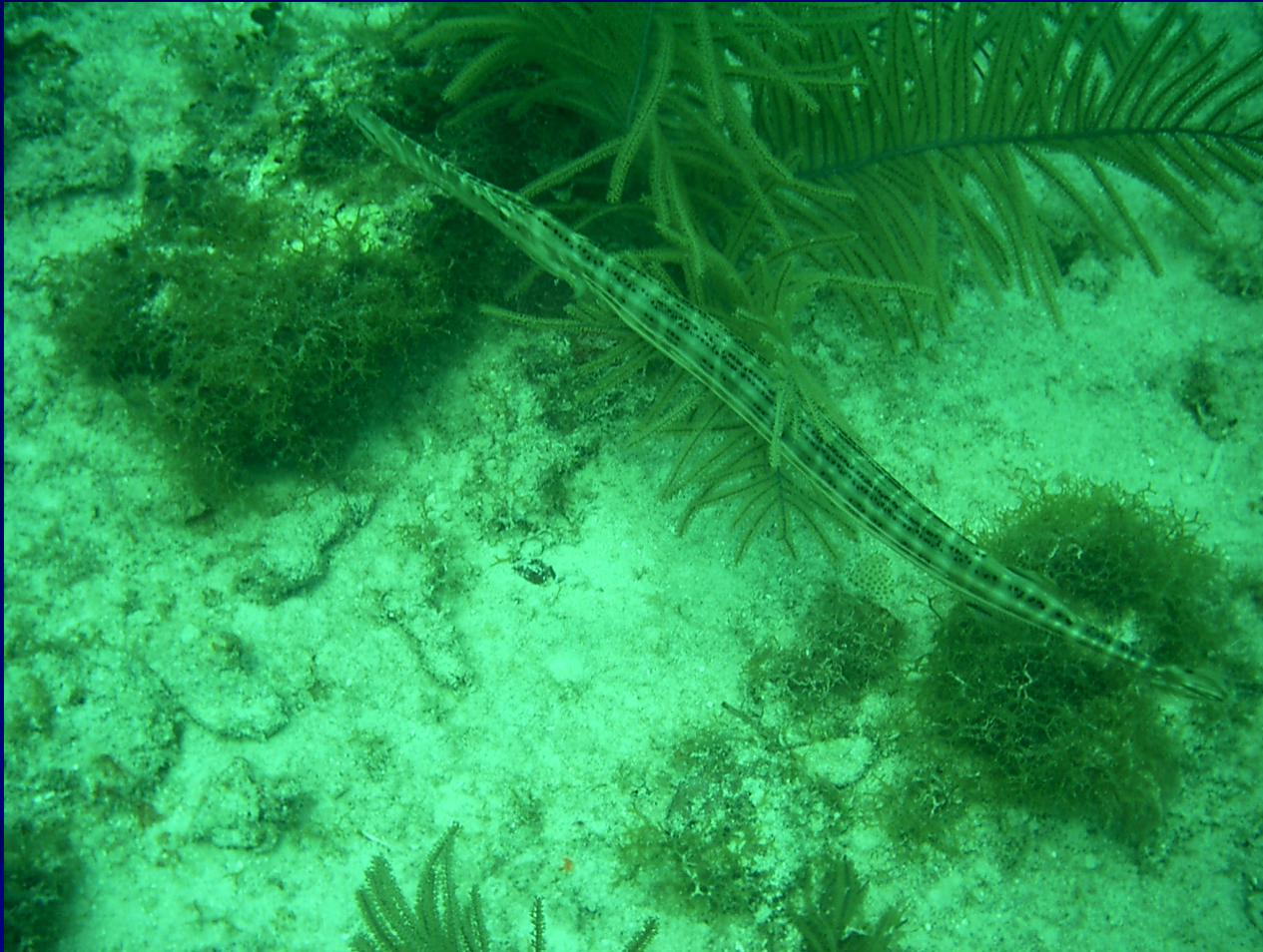
Scraweled Filefish, *Aluterus scriptus*



Yellowgoatfish, *Mulloidichthys martinicus*



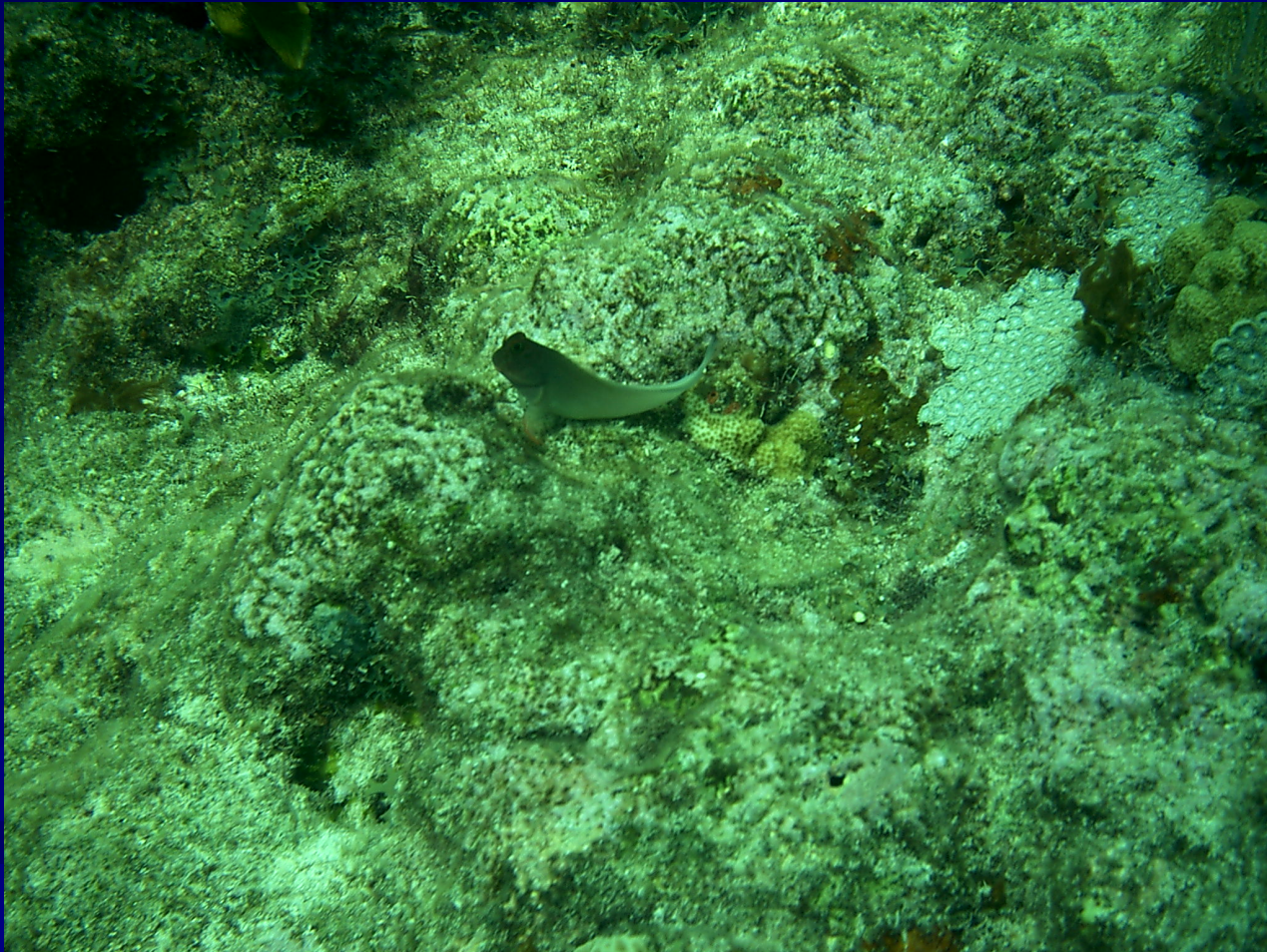
Trumpetfish, *Aulostomus maculatus*



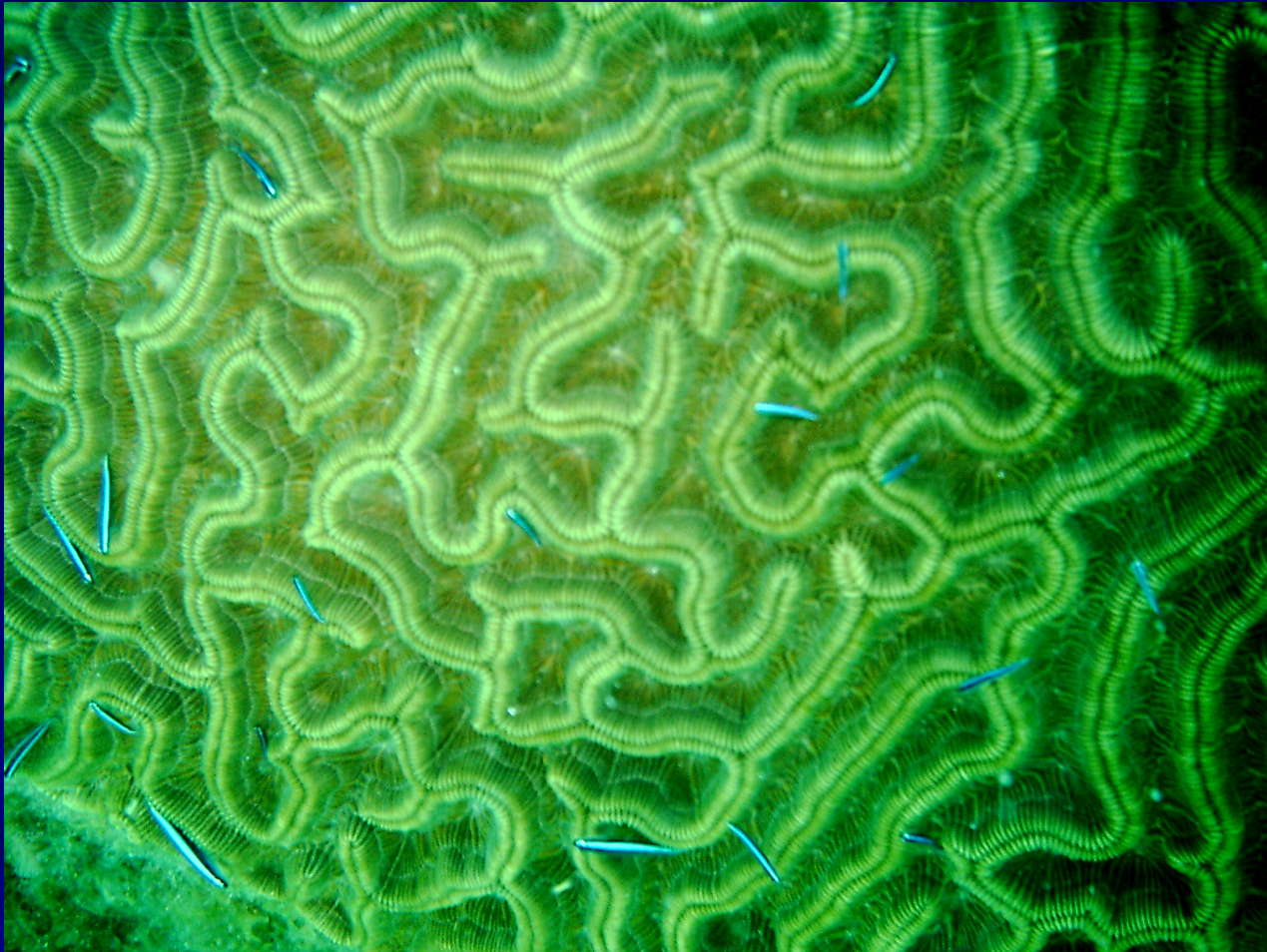
Jawfish, *Opistognathus aurifrons*



Redlip Blenny, Ophioblennius atlanticus



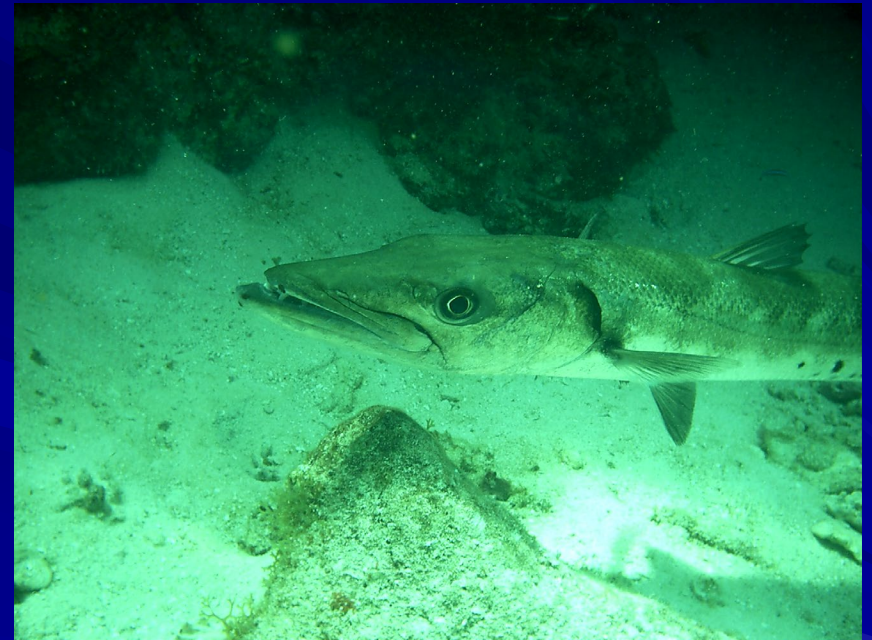
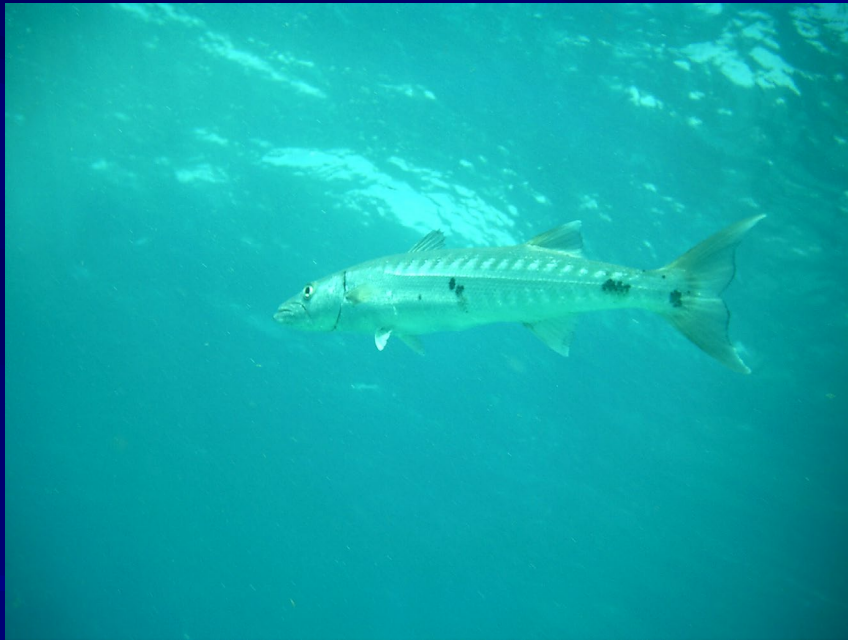
Neon Goby, *Gobiosoma oceanops*



Squirrelfish, *Holocentrus ascensionis*



Barracuda, *Sphyraena barracuda*



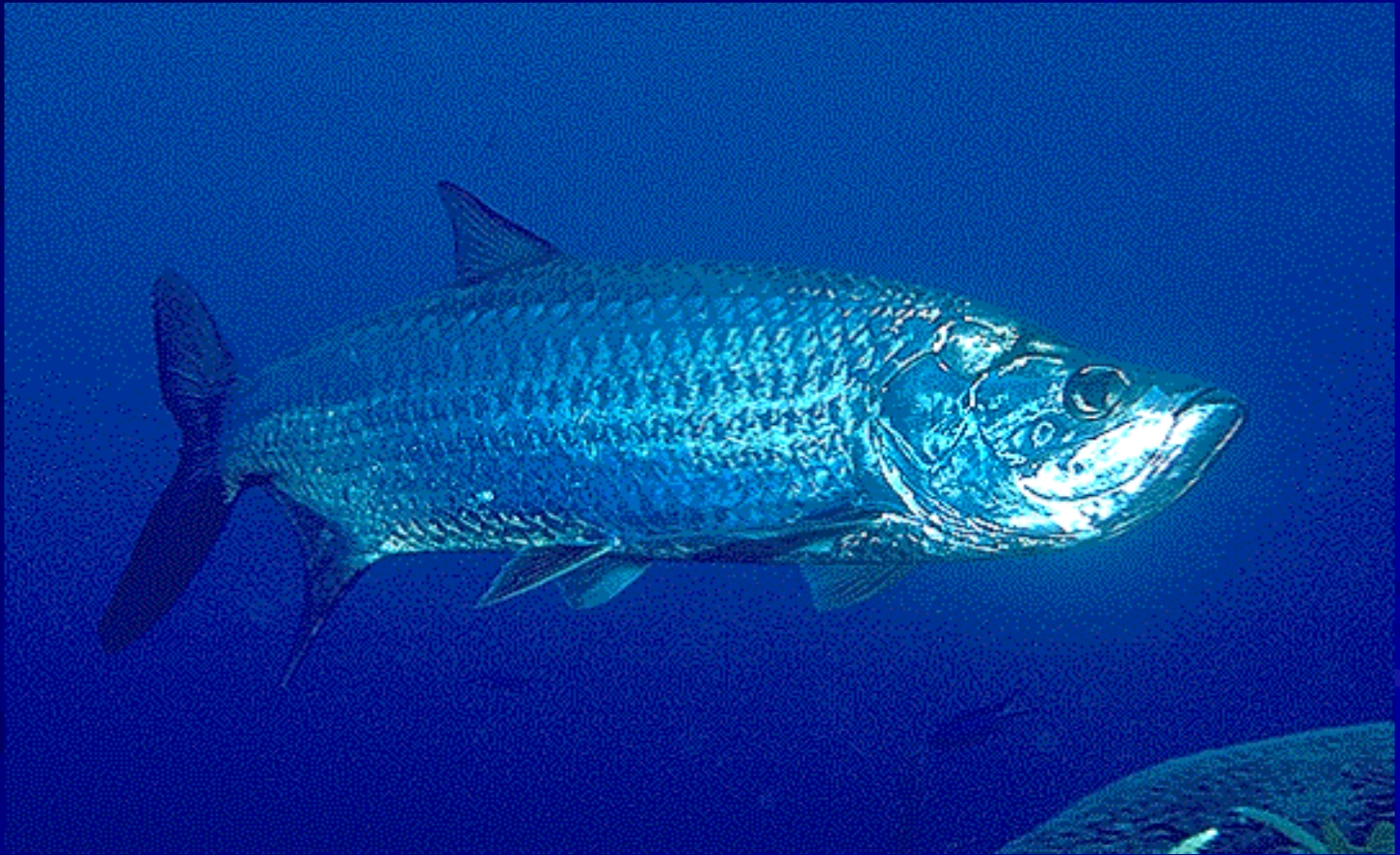
Game Fish



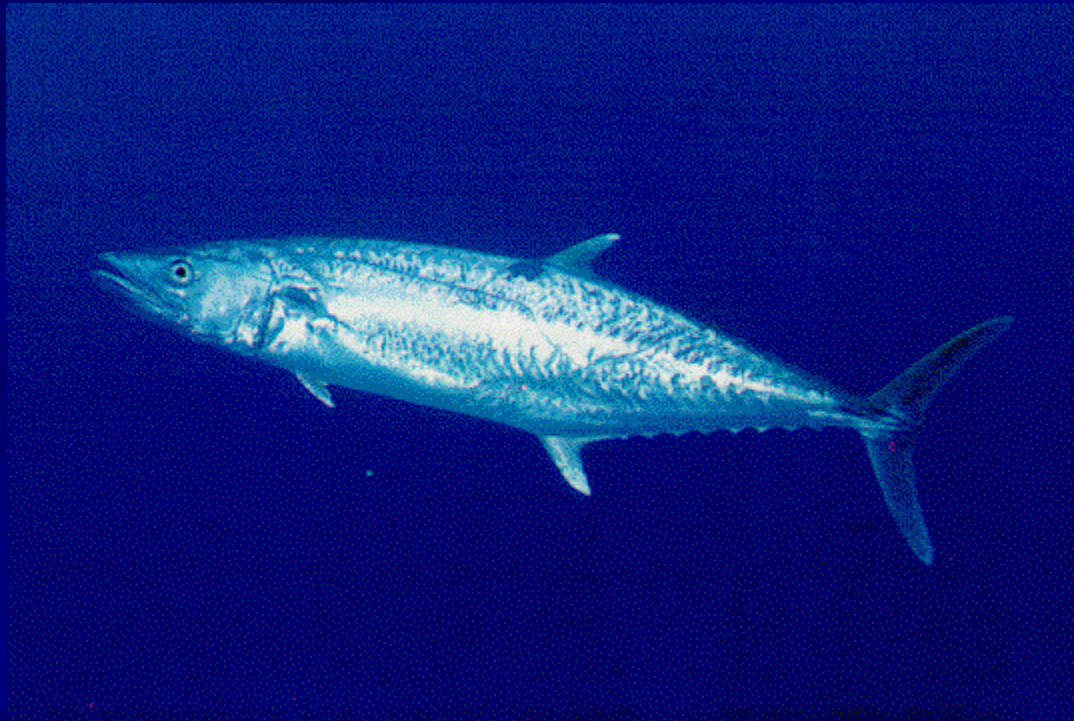
Dolphin, *Coryphaena hippurus*



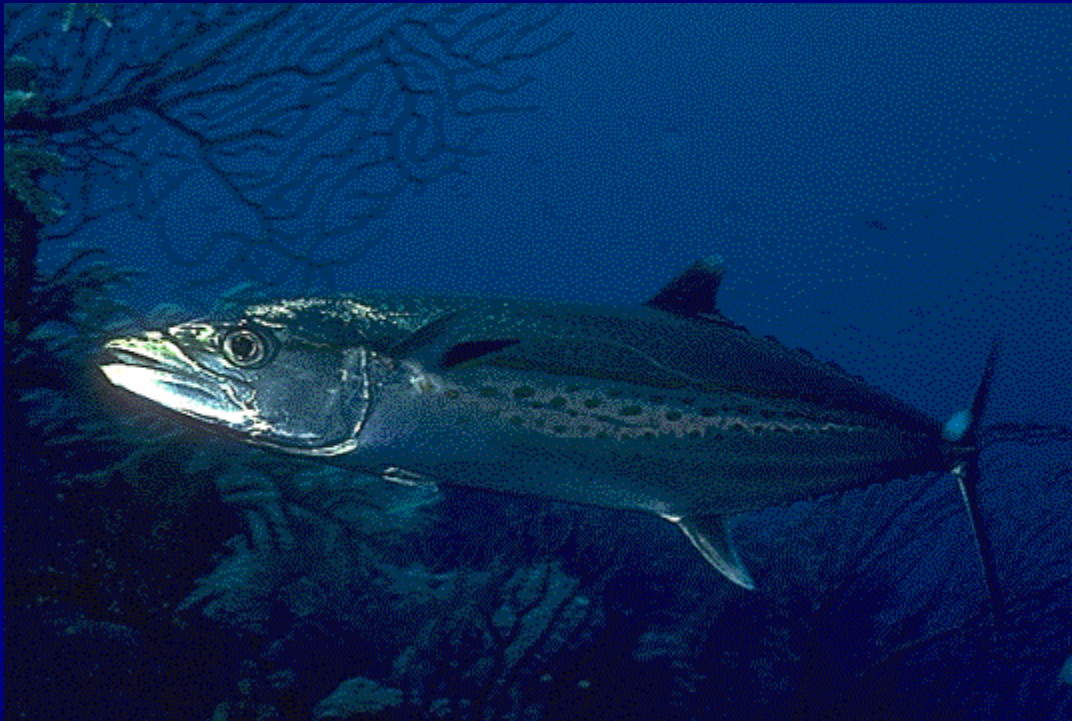
Tarpon, *Megalops atlanticus*



King Mackerel,



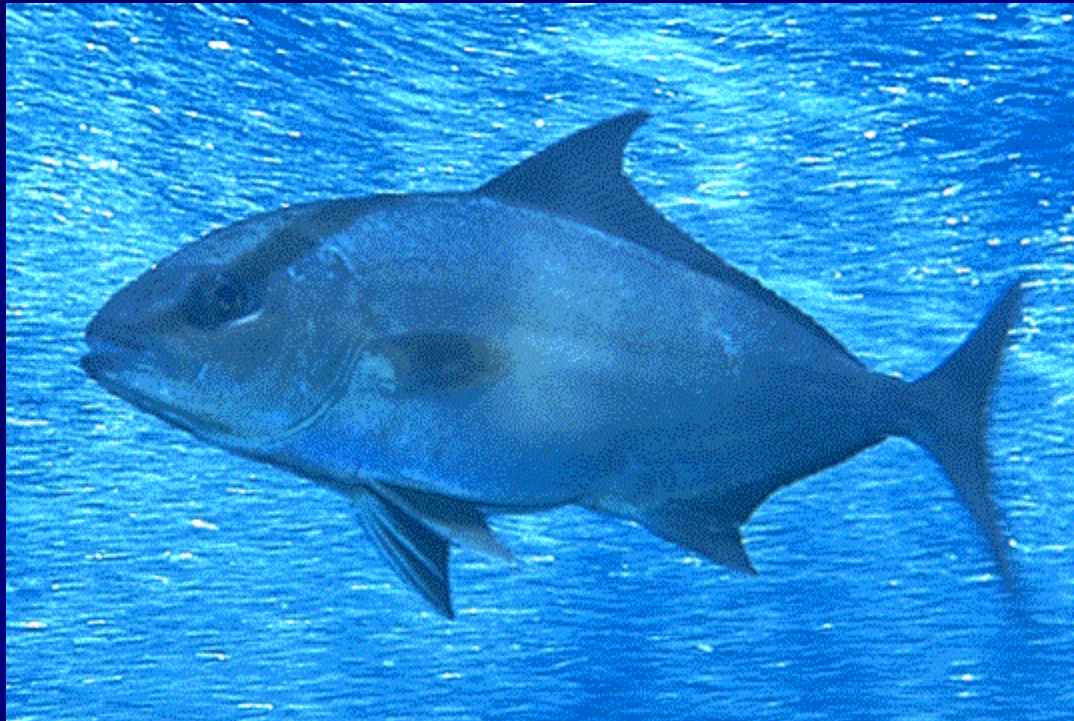
Spanish Mackerel, *Scomberomorus maculatus*



Cero Mackerel,



Amberjack, *Seriola dumerili*







© KURT JONES 2003