



# Nationally Known Genetics

Charlotte, Arkansas



Noon • Saturday

# November 16, 2019

FALL SALE

[www.neaaa.org](http://www.neaaa.org)

**SELLING 126 LOTS**  
**38 Bulls | 88 Females**



## CUSTOMIZED PROGRAM. OPTIMIZED RESULTS.

Don't settle for one-program-fits-all solutions!

**High Density Nutrition™** programs combine our full-range of **FortiGraze® Minerals**, **RangeMax® Cubes** and **High Protein Supplement Blends** to target your nutritional needs based on cow-production and forage specifics.

Leverage the expertise of our sales experts and nutritionists to reach a new level of performance with a customized program for you!

LNC-ONLINE.COM  
800.777.1562



"Our President" Tommy Hill



"Our Treasurer" Bill Maxwell



"Our Vice President" Bill Davis



"Our Secretary" Pam Taylor





Noon • Saturday

# November 16, 2019

## FALL SALE

SELLING 126 LOTS

38 Bulls | 88 Females

### SAME LOCATION - NEW NAME

**Location:** Cattlemen's Livestock Exchange

**Owners:** Eric Mohlke, Bart Hayes and Ryan Hayes

**Physical Address:** 7750 White Drive, Cord, AR - East of Batesville

**SALE DAY PHONE: 870-799-8661 • 662-837-1776**

**Mark Sims, Regional Manager**  
(580) 595-0901

**Richard Dyar, Special Assignment**  
(816) 390-6601

#### Northeast Arkansas Angus Association

**Tommy Hill, President**  
(870) 236-3187

**Pam Taylor, Secretary**  
(870) 346-5657  
pamtaylor1295@gmail.com

**Bill Davis, Vice President**  
(501) 283-0601  
mdavis449@hughes.net

**Bill Maxwell, Treasurer**  
(870) 878-6485  
bmmaxwell@att.net

### THANK YOU TO OUR SPONSORS!

#### Friday Night & Sale Day Meal Sponsors

Greenway Equipment, Best Equipment, Neogen Beef Genomics, Boehringer Ingelheim, Stone Bank, Gateway Animal Clinic, Harris Farm & Supply

#### Sale Day Breakfast Sponsors

Hubbard Feeds, Hirsch Feed

*Sale Managed By:*



American Livestock Brokers  
Jarvene Shackelford, Auctioneer #573  
Office: 662-837-6742 • Mobile: 662-837-1776  
E-mail: alb@albauction.com  
www.albauction.com

**Check Us Out!!**  
[www.neaaa.org](http://www.neaaa.org)



NEAAA

Watch Sale Live  
on Facebook

**ANGUS MEDIA** Visit the *Angus Journal*® Web site, [www.angus.org](http://www.angus.org), and view this sale book online. *References: American Angus Association*®, *AHIR*®, *AngusSource*®, *CAB*®, *Pathfinder*®. EPDs current as of Oct. 2, 2019. Updated EPDs can be viewed online at [www.angus.org](http://www.angus.org). The American Angus Association does not generate nor endorse \$C numerical ranks (versus percentile rankings) until \$C numerical ranks are officially released.

# POINTS TO PONDER

**Health:** Complete health papers will be furnished for immediate shipment. All cattle have proper vaccinations. Calves: Age three months and above will have IBR, BVD, BRSV, Pasteurella, 7-way Blackleg and Haemophilus. Cows and Bulls: IBR, BVD, 7-way Blackleg, Haemophilus and Lepto-vibrio. AM, NH and CA tested free or no carrier ancestors.

**Inspection of Cattle:** Cattle will be available for inspection at the sale site Friday afternoon, November 15, 2019.

**Terms:** Cattle sell under the suggested Terms and Conditions of the American Angus Association ([http://www.angus.org/Pub/suggested\\_sale\\_terms.pdf](http://www.angus.org/Pub/suggested_sale_terms.pdf)). Settlement must be made day of sale.

**Motels:**

- Hampton Inn 870-569-1560
- Holiday Inn Express 870-698-2700
- Comfort Suites 870-698-1900
- Ramada Inn 855-809-3509

**Liability:** All persons attending this sale do so at their own risk. American Livestock Brokers, Cattlemen's Livestock Exchange, and the N.E. Arkansas Angus Association act as agents only - agreement is between the buyer and seller.


**Insurance:** Insurance will be available on purchases if desired.

**Food & Refreshments:** Food will be available at the sale. Lunch served between 10-12.

**Announcements:** All announcements made from the sale box take precedence over sale book information.

**Sale Book:** Please bring this sale book with you on sale day.


# 11-16-19



## BUY BULLS ON TARGET

*Genetic Recommendations:*

	Value
Marbling EPD (Marb)	+ 0.53
Dollar Grid Carcass Index (\$G)	+ 34.09



**LOOK FOR THE LOGO!**

The Targeting the Brand logo is designed to highlight registered Angus bulls with greater genetic potential to produce calves meeting the most challenging specifications of the *Certified Angus Beef*® brand. Bulls must be at least breed average or better for marbling EPD and \$ Grid of non-parent Angus sires to qualify for use of the Targeting the Brand logo. Even when these numbers do not appear on the catalog listing, the logo gives you confidence that these minimum genetic requirements are met. Actual EPD requirements are outlined below based on the breed averages from the Spring 2019 Angus Sire Summary.

List 1 Andy Angus 00123												
Bull	Reg	0012345	9/1/2018	Female 0008								
CED	BW	WW	YW	LC	MAR	CA	REAR	SI	FAT	DIS	DFI	
18	-2.2	11	29	1.87	75	18	0.67	1.00	1.00	27	1.00	
AAA Andy 4107	XXXXXXXXXXXXXXXX	SW	67.76									
AAA Andy Angus 528	XXXXXXXXXXXXXXXX	♀	97.24									
2014 Black Star	XXXXXXXXXXXXXXXX	SW	41.09									
AAA Big Dumbell	XXXXXXXXXXXXXXXX	SW	180.27									
AAA Andy Angus	XXXXXXXXXXXXXXXX											
2000 Top Star	XXXXXXXXXXXXXXXX											


To learn more about how commercial cattlemen can further utilize the Targeting the Brand logo in marketing genetically superior feeder cattle, visit [www.AngusLink.com](http://www.AngusLink.com)

## Donation

**LAKEVIEW PERFECT 905** [DDF] • 16495852

CED	BEPD	WEPD	YEPD	MILK	\$W	\$F	\$G	\$B
+12	+1	+73	+125	+18	+68	+109	+45	+154
					CW	MARB	REA	FAT
					+59	+58	+27	+017

Sire: SS Objective T510 OT26  
Dam: LakeView EXT's Alliance 608



**5 UNITS OF LAKEVIEW PERFECT 905**

Gary and Christina Spencer • 870-878-6939 • [Christina@lakeviewangus.com](mailto:Christina@lakeviewangus.com)

## Young's Produce, Inc.

Alton, MO 417-778-7261

Tom Young - 500 pounds All Purpose 311Q Wind & Rain Texas All Season 7.5 Complete Minerals

**STgenetics**® *Global leader in genetics and sexed semen.*

**Luke Bradford, Regional Manager | 979-571-0028**

**Luke Foster, Representative 870-215-6650**

10 Straws any bull with SexedULTRA semen in our lineup

## Southeast Select Sires

Jaran Lehman - 870-668-6329  
[jaran.lehman@southeastselectsires.com](mailto:jaran.lehman@southeastselectsires.com)  
\$200 Semen Credit  
Short Supply Semen Excluded



# Spring 2019 CONSIGNORS

Consignor	Bull Lots	Female Lots
<b>Asher Farm</b> Tom & Tracy Asher Pomona, MO, 417-257-3653 Cell 417-257-3220 ashers60acres@yahoo.com		<b>84</b>
<b>Barry Farms</b> Ricky Barry Corinth, MS, 662-808-5560, rbarry162@yahoo.com	<b>2</b>	<b>104-107</b>
<b>Big Creek Angus</b> Greg & Beth Spaunhorst Paragould, AR, 870-573-6306 Cell 870-215-3111 spaunhorst6@live.com	<b>3,6</b>	<b>40-43</b>
<b>Campdown Angus</b> Britt Camp Paragould, AR, 870-926-7771, britt@campdownangus.com	<b>14</b>	
<b>Checkerhill Angus</b> Kelly & Elayne Smith West Plains, MO, 417-855-9461, Kelly.smith@hubbardfeeds.com		<b>73-77</b>
<b>Circle D Farm</b> William G. "Bill" & Margaret Davis Concord, AR, 870-668-3716 Cell 501-283-0601 mdavis449@hughes.net	<b>7</b>	
<b>Circle S Cattle</b> Wayne Smith Loun, MS 601-452-0702, wsmith@taylorvillepoultrysupply.com		<b>108-111</b>
<b>Copeland Angus Ranch</b> Tyler Copeland Paragould, AR, 870-236-8533 Cell 870-450-4089 tylercopeland_il@yahoo.com	<b>10</b>	<b>53-57</b>
<b>Cotter Farms</b> Lyn Cotter Henderson, AR, 870-404-2087, cotterfarms@yahoo.com	<b>31,36</b>	
<b>Cross Brothers Farm</b> Jerry & Debbie Cross Paragould, AR, 870-236-6301 Cell 870-239-1321 ccs@paragould.net		<b>58</b>
<b>Double D Angus</b> Doug & Denise Thornton Carlisle, AR, Cell 501-516-6628 d.d.thornton@yahoo.com	<b>11,13</b>	
<b>Faith Angus</b> Faith Taylor Clinton, AR, 501-253-3086, taylorfaith328@gmail.com	<b>20</b>	
<b>Foster Angus Ranch</b> Luke, MacKenzie & Millie Kate Foster Paragould, AR, 870-565-2803 Cell 870-215-6650 fosterangusranch@live.com		<b>59-62</b>
<b>Fulper Angus Farm</b> Chris & Jody Fulper Booneville, MS, Cell 662-210-4934, jefulper@gmail.com		<b>85-89</b>
<b>G &amp; R Farm</b> Gary & Robbie Powell Mantachie, MS, Cell 662-640-1957, gpowell2016@yahoo.com		<b>94,95</b>
<b>Haley Hill Farm</b> Sam & Susan Haley Quitman, AR, 501-590-1180 Cell 501-589-2222 haleychiro@windstream.net	<b>26,27</b>	<b>93</b>
<b>Harris Cattle Farms</b> Marty & Brandon Harris Paragould, AR, Cell 870-215-1365, mharris@smithdrug.com	<b>4</b>	
<b>HayPat Farm</b> Hayden Taylor Center Ridge, AR, Cell 870-710-0422, haypat466@aol.com	<b>19,22</b>	
<b>Helms Farms</b> Presto & Sally Helms Drasco, AR, 870-668-3515 Cell 501-270-1726 sallyhelms2014@gmail.com	<b>9,25</b>	

Consignor	Bull Lots	Female Lots
<b>Hickory Hill Angus</b> Stan & Angela Smith West Plains, MO, Cell 417-293-8220 hickoryhillangus@hotmail.com		<b>78-83</b>
<b>Hill Angus</b> Tommy & Harrie Leigh Hill Paragould, AR, 870-236-3187 Cell 870-239-1384 eaecattle@gmail.com	<b>23,28,37</b>	<b>44-46</b>
<b>KimBob Farm</b> Bob & Kim Thornton Ward, AR, Cell 501-773-1706, Bthornton001@centurytel.net	<b>8</b>	<b>92</b>
<b>LakeView Farms</b> Gary & Christina Spencer Powhatan, AR, 870-878-6939 Cell 870-809-0910 christina@lakeviewangus.com	<b>1</b>	<b>39</b>
<b>Longshot Farms</b> Jarod & Ashley Long Fayette, AL, Cell 205-442-1613, jarodlong@gmail.com		<b>90,91</b>
<b>Mahan Angus</b> Stephen & Terry Mahan Center Ridge, AR, Cell 501-514-3132 mahan1@aol.com or tmahan1@aol.com	<b>16,17</b>	<b>67-72</b>
<b>Newberry Angus Farm</b> Eric Newberry Paragould, AR, Cell 870-215-2703, ericnewberry@hotmail.com		<b>96</b>
<b>Old 59 Cattle Company</b> Troy & Amye Winingier Mason, TN, 901-725-0409 Cell 901-508-5178 amyewiningier@yahoo.com	<b>34</b>	
<b>Ponderosa Farm</b> Tony Tolar Taylorville, MS, 601-422-3350, rttolar@gmail.com		<b>112-114</b>
<b>RJS Angus</b> Ron South Gilmer, TX, Cell 903-790-5039		<b>97-102</b>
<b>RT Angus</b> Rob Thornton Carlisle, AR, Cell 501-230-6173, robtor@gmail.com	<b>21</b>	
<b>Satterfield Charolais &amp; Angus</b> Mark & Nancy Satterfield Norfolk, AR, Cell 501-944-9274, satterfieldfarms@icloud.com		<b>63-66</b>
<b>Charles "Buddy" Smith Angus</b> Charles "Buddy" & Loretta Smith, Paragould, AR, 870-236-6164		<b>49-52</b>
<b>Smith Livestock, LLC</b> Jeff & Clayton Smith Koshkonong, MO, 417-274-9471 or 417-274-1630 jeffsmith@werestorehope.com	<b>12,15,33</b>	
<b>Speer Farms</b> Stacey & Amy Speer Marmaduke, AR, Cell 870-240-3728, speerfarms@yahoo.com	<b>18</b>	<b>47,48</b>
<b>Spradlin Farms</b> Joe Spradlin BaldKnob, AR, Cell 501-278-0326, spradlinangus@yahoo.com	<b>32,35</b>	
<b>Sugar Springs Ranch</b> Tom Huls & Dr. Diane Balich Lincoln, AR, Cell 479-387-5339, sugarspr@pgtc.com	<b>5, 24, 29</b>	<b>121-126</b>
<b>Twisted Fork Angus Farms</b> Mike and Erica Higginbotham Collierville, TN, 901-870-6063, mike@twistedforkfarms.com	<b>30</b>	<b>130</b>
<b>Wingert Cattle Company</b> Scott & Amanda Wingert Rosebud, AR, Cell 501-230-1202, awingert@rbsd.k12.ar.us		<b>115-120</b>



# Bulls | Lots 1-38



**SydGen Enhance** - Sire of Lot 1



**DL Dually** - Sire of Lot 4

## 1 LAKEVIEW ENHANCED VISION 821

Birth Date: 11-9-2018 Bull #19310765 Tattoo: 821

SydGen Enhance 18170041	*SydGen Exceed 3223 [RDF]	+*SydGen Googol	<b>CW</b>
ANGUS <small>Powered by Wageningen</small>	SydGen Rita 2618	+*SydGen Forever Lady 1255	+55
LakeView Blackbird 416	#+*GAR Prophet [RDF]	**SydGen Liberty GA 8627 [RDF]	<b>MARB</b>
*17980251	LakeView Top Product 209	#Fox Run Rita 9308	+77
		#CRA Bextor 872 5205 608	<b>REA</b>
		+GAR Objective 1885	+92
		**Connealy Final Product	<b>FAT</b>
		LakeView Blackbird 915	+008

CED	BEPD	WEPD	YEPD	MILK	\$M	\$W	\$F	\$G	\$B	\$C
+9	+0	+67	+119	+32	+83	+84	+96	+64	+160	+291

- Consigned by: LakeView Farms, Powhatan, AR
- Actual Birth Weight: 87 lbs.
- This bull exemplifies a perfectly balanced pedigree. He is easy calving with explosive growth with top tier carcass traits and scores, plus top 5% in \$M, proving the value of his maternal complex, and top 4% in docility. He has good feet and legs and a very attractive phenotype. Simply has it all.
- His adj. WW was 752 and ADG of 3.85 proving his growth potential as a bull and steer maker.
- Top 15% in WW and YW, Top 10% in Milk, Top 3% in \$W, Top 10% in \$B. His \$C is 293.
- He will be wormed within 30 days of sale. All AHIR data through yearling and ultrasound will be available sale day. DNA tested, fertility guaranteed, parentage certified and meets the Targeting the Brand requirements.
- Certified Brucellosis Free Herd #ARB27-HC. Whole herd is tested negative for Johnes since 2004.

## 2 MOMENTUM

Birth Date: 10-23-2018 Bull 19281665 Tattoo: 2

GAR Momentum [RDF]	#+*GAR Progress	*GAR Predestined	<b>CW</b>
*17354145	+GAR Big Eye 1770	*GAR Objective 2345	+71
ANGUS <small>Powered by Wageningen</small>	#+SAV 004 Predominant 4438	**ALC Big Eye D09N	<b>MARB</b>
SSR Beauty 2470	#SSR SSR Beauty 4247	GAR Objective 3387	+1.19
16886470		#SAV 8180 Traveler 004 [RDF]	<b>REA</b>
		SAV Emblynette 1182	+93
		*GAR Predestined	<b>FAT</b>
		SSR Beauty 5424	+002

CED	BEPD	WEPD	YEPD	MILK	\$M	\$W	\$F	\$G	\$B	\$C
+1	+4.3	+68	+129	+40	+37	+72	+119	+85	+204	+302

- Consigned by: Barry Farms, Corinth, MS
- Top 1% \$B, Top 2% CW, \$F & \$G, Top 3% Marb, Top 10% YW & RE, Top 15% WW & \$W
- Just look at the solid carcass and \$Values here! This Momentum son puts it all together. His dam combines Predominant and Predestined.
- This is a solid bull that should get the job done.

## 3 BIG CREEK RAMPAGE 829

Birth Date: 10-11-2018 Bull 19469342 Tattoo: 829

Quaker Hill Rampage 0A36 [RDF]	#MCC Daybreak	#+Boyd New Day 8005	<b>CW</b>
+*16925771	+*QHF Blackcap 6E2 of 4V16 4355	#MCC Miss Focus 134	+35
ANGUS <small>Powered by Wageningen</small>		Ideal 4355 of 0T26 2440	<b>MARB</b>
BCA Quality Queen PA 02	KAR Quality Queen 765	*QHF Blackcap 4V16 of 1H8	+68
17793620		#+GAR New Design 5050	<b>REA</b>
		#+PA Lorna Marshall 2905-730	+93
		**SS Objective T510 0T26	<b>FAT</b>
		KM Quality Queen 2873	-034

CED	BEPD	WEPD	YEPD	MILK	\$M	\$W	\$F	\$G	\$B	\$C
+6	+1.1	+66	+114	+27	+50	+73	+66	+64	+130	+219

- Consigned by: Big Creek Angus, Paragould, AR
- BW 76 WW 748
- Top 10% RE, Top 15% WW, \$W & \$G, Top 20% YW
- This bull has a moderate birth. He is deep sided, has a wide top and is docile.
- His dam has excellent udder quality. He is slick haired and is a smooth moving bull.
- Semen Tested.

## 4 HCF DUALLY PRIDE [DDP]

Birth Date: 9-20-2018 Bull 19389414 Tattoo: 816

DL Dually	DL Sonic 444	*KG Solution 0018	<b>CW</b>
*18608253	*DL Incentive 2103	DL Barbara 792	+66
ANGUS <small>Powered by Wageningen</small>	Harris Dash 003	DL Incentive 228	<b>MARB</b>
HAF Pride Lady 588	Hills Pride Lady 027	DL Karama 39	+45
18436615		**Sitz Dash 10277	<b>REA</b>
		Harris Mary 773	+29
		BUBS Butch Cassidy SA08	<b>FAT</b>
		Hills Pride Lady 612	+051

CED	BEPD	WEPD	YEPD	MILK	\$M	\$W	\$F	\$G	\$B	\$C
+8	+1.3	+86	+145	+22	+89	+91	+87	+36	+123	+249

- Consigned by: Harris Cattle Farms, Paragould, AR
- BW 73 WW 785
- Top 1% SC, WW, YW & \$W, Top 2% \$M, Top 3% CW
- Truly a growth bull with great birth weight EPD and strong carcass values.
- He should add great value to his offspring.

## 5 SSR BIG MIKE 4508

Birth Date: 9-13-2018 Bull 19419497 Tattoo: 4508

Stevenson Turning Point	#*Plattermere Weigh Up K360 [RDF]	#Sitz Upward 307R	<b>CW</b>
+*18434747	#+*Stevenson Pride 1167x	#Barbara of Plattermere 337	+31
ANGUS <small>Powered by Wageningen</small>	#+SAV 004 Predominant 4438	**FSHK Pride 180	<b>MARB</b>
SSR Forever Lady 44450	SSR Forever Lady 2445	#SAV 8180 Traveler 004 [RDF]	+67
16886474		SAV Emblynette 1182	<b>REA</b>
		#+B/R New Frontier 095	+43
		#+Davis Forever Lady 2244	<b>FAT</b>
			+013

CED	BEPD	WEPD	YEPD	MILK	\$M	\$W	\$F	\$G	\$B	\$C
+10	+3	+56	+94	+23	+68	+58	+75	+52	+127	+233

- Consigned by: Sugar Spring Ranch, Lincoln, AR
- Top 20% CED
- A really good looking herd bull prospect by Turning Point out of a Predominant and out of an 095 dam.
- This is another good one shown by Hailey Ann Roye this past year.

## 6 BIG CREEK HICK-OK 818

Birth Date: 8-31-2018 Bull 19469348 Tattoo: 818

Mill Bar Hickok 7242	#*Connealy Consensus 7229	#*Connealy Consensus	<b>CW</b>
*17351674	Mill Bar Bemindful Maid 6304	Blue Lilly of Conanga 16	+49
ANGUS <small>Powered by Wageningen</small>	#*Jindra Double Vision	**SAV Final Answer 0035 [RDF]	<b>MARB</b>
Nic-Bell Lula D487	Nichols Bell Lula W766	Mill Bar Lady DI 3400	+88
18551863		#Connealy Reflection	<b>REA</b>
		+Hoff Rachel 8312 405	+53
		Nichols Direction L84	<b>FAT</b>
		Nichols Bell Lula S356	+020

CED	BEPD	WEPD	YEPD	MILK	\$M	\$W	\$F	\$G	\$B	\$C
+16	-9	+63	+109	+27	+67	+73	+97	+63	+160	+275

- Consigned by: Big Creek Angus, Paragould, AR
- BW 60 | ADJ WW 787
- Top 1% CED, Top 10% \$W, Top 15% BW, MARB, \$G & \$B, Top 20% \$F, Top 25% WW & YW
- Looking for a heifer bull or a really good herd bull? This is the one.
- He is docile and has a lot of muscle, a wide top with added length. His feet are excellent.
- His dam has fancy udder and good feet. This bull is slick haired, semen checked, and also DNA tested. He has a super phenotype.



**Welytok Charter 3B20 - Sire of Lot 7**

## 10 COPELAND EMBLAZON F35

Birth Date: 4-3-2018 Bull 19412889 Tattoo: F35

\*Exar Emblazon 8268 #+\*Rito 6EM3 of 4L1 Emblazon  
 Buford Emblazon Z898 +EXAR Forever Lady 6432  
 +\*17505106 +\*BUF Eriskay 7352 #\*N Bar Emulation EXT  
 #+J Bar 7 Eriskay Q13-71K1  
 #\*Connealy Consensus  
 #\*Connealy Consensus 7229 Blue Lilly of Conanga 16  
 Rock Ridge Emblynette B35 \*SAV Brave 8320  
 17860145 +\*Champion Hill Emblynette7955 +Champion Hill EMBLYNETTE6539

CED	BEPD	WEPD	YEPD	MILK	\$M	\$W	\$F	\$G	\$B	\$C
+5	+1.5	+60	+99	+25	+54	+61	N/A	N/A	N/A	N/A

- Consigned by: Copeland Angus Ranch, Paragould, AR
- If you are in the market for a moderate framed, easy doing bull - look up F35 sale day!
- He traces back to the Champion Hill and SAV foundation Emblynette cow family. He will give you a nice set of easy feeding steers as well as a beautiful set of replacement females that will make a great set of brood cows!
- Will be semen, trich, and genomic tested by sale day.

## 7 CDF BILL'S CHARTER F11

Birth Date: 8-19-2018 Bull 19189775 Tattoo: F11

#\*AAR Ten X 7008 SA #\*Mytty In Focus [RDF]  
 Welytok Charter 3B20 [RDF] #AAR Lady Kelton 5551  
 \*17456955 +Springfield Blackcap 8004 #Basin Franchise P142  
 +VT 1407 New Design A18  
 #\*S Chisum 6175  
 Benfield Edella 1105  
 #\*GAR Predestined  
 +Abbey Pream 269

CED	BEPD	WEPD	YEPD	MILK	\$M	\$W	\$F	\$G	\$B	\$C
+14	-.7	+53	+109	+22	+54	+53	+83	+57	+140	+236

- Consigned by: Circle D Farms, Concord, AR
- BW 60 | ADJ WW 534 | ADJ YW 1049
- Top 2% CED, Top 15% BW, Top 25% \$G
- Calving ease bull with CED of +14 and a BW EPD of -.8.
- A heifer bull out of a really good producing dam. Don't miss this one.



**AAR Ten X 7008 SA - Sire of Lot 11**

## 8 KIMBOB RESOURCE K117

Birth Date: 6-15-2018 Bull \*19182885 Tattoo: K117

+Rito 707 of Ideal 3407 7075 #RR Rito 707  
 SAV Resource 1441 [RDF] Ideal 3407 of 1418 076  
 #+\*17016597 \*SAV Blackcap May 4136 #SAV 8180 Traveler 004 [RDF]  
 #+SAV May 2397  
 #\*Connealy Onward  
 +BAAR USA Lady Jaye 489  
 #\*SS Objective T510 0T26  
 Kimbob Entense NW K024

CED	BEPD	WEPD	YEPD	MILK	\$M	\$W	\$F	\$G	\$B	\$C
+8	+1.5	+73	+137	+35	+48	+82	+96	+42	+137	+226

- Consigned by: KimBob Farm, Ward, AR
- Top 2% YW & CW, Top 4% RE, Top 5% WW & \$W, Top 15% \$F
- This is a top growth bull by SAV Resource and out of a War Party dam, back to Objective.
- Long bodied and heavy muscled.

## 11 DDA TEN X 89

Birth Date: 3-29-2018 Bull 19384407 Tattoo: 89

#\*Mytty In Focus [RDF] #SAF Focus of ER  
 Mytty Countess 906  
 SAV Adaptor 2213  
 +HSAF Lady Kelton 504B  
 #SS Traveler 6807 T510  
 SS Miss Rita R011 7R8  
 #Bon View New Design 1407 [RDF]  
 +NER Forever Lady EJ 920

CED	BEPD	WEPD	YEPD	MILK	\$M	\$W	\$F	\$G	\$B	\$C
+5	+1.8	+70	+130	+36	+50	+84	+85	+64	+149	+243

- Consigned by: Double D Angus, Carlisle, AR
- Top 3% \$W, Top 5% YW, Top 10% WW & MARB, Top 15% \$G, Top 10 \$B
- A really solid bred son of TenX out of an Objective dam back to 1407.
- Great foundation performance in this bull and he has the herd bull look.

## 9 HELMS SIGNATURE OF X525 F7

Birth Date: 5-17-2018 Bull 19237601 Tattoo: F7

\*Boyd Signature 1014 #\*Kesslers Frontman R001  
 Helms Signature of 0137 C013 #Boyd Erica Dianna 9054  
 18356705 KLR Queenie 0137 #MCC Daybreak  
 Plattermere Queenie 815  
 #\*Connealy Onward  
 +BAAR USA Lady Jaye 489  
 #+Woodhill Foresight  
 +B/R Ruby of Tiffany 8250

CED	BEPD	WEPD	YEPD	MILK	\$M	\$W	\$F	\$G	\$B	\$C
+6	+1.1	+43	+85	+32	+62	+53	+84	+43	+127	+227

- Consigned by: Helms Farms, Drasco, AR
- Top 25% RE
- This signature son is out of a high volume War Party dam that is out of a Foresight daughter.
- Vaccinated including blackleg, wormed, BSE and Angus GS tested - all within 30 days of sale.
- His dam is from the great 44 Ruby of Tiffany line of females.

## 12 SL HESSTON 82

Birth Date: 3-25-2018 Bull 19505133 Tattoo: 82

#\*SAV Harvester 0338 #\*SAV Heritage 6295  
 +\*SAV Emblynette 7749  
 #+SAF 598 Bando 5175  
 #SAV Emblynette 7319  
 #Hero 6267 of RR 2418  
 HA Rito Blackcap 9038  
 #B/R Destination 727-928  
 DNT Witch 516

CED	BEPD	WEPD	YEPD	MILK	\$M	\$W	\$F	\$G	\$B	\$C
+8	+1.8	+52	+87	+26	+75	+55	+81	+38	+118	+228

- Consigned by: Smith Livestock LLC, Koshkonong, MO
- Top 20% \$M
- Here is a thick made, heavy muscled son of the ever popular Hesston bull. His dam is by Image Maker back to B/R Destination.
- This one should sire the right kind of steers plus his daughters should be high quality replacement females.

# 13 DDA TEN SPEED 85

Birth Date: 3-23-2018 Bull 19384405 Tattoo: 85

SAV Ten Speed 3022 *17633563	#*AAR Ten X 7008 SA	#*Myty In Focus [RDF]	<b>CW</b>
ANGUSGS DA Forever Lady 521 18357447	#SAV Madame Pride 1134	#AAR Lady Kelton 5551	+45
	#*KCF Bennett Absolute	#+ SAV Bismarck 5682 [RDF]	<b>MARB</b>
	DDA Forever Lady 816	SAV Madame Pride 9100	+71
		#*SAV Final Answer 0035 [RDF]	<b>REA</b>
		Thomas Miss Lucy 5152	+94
		#+Woodhill Foresight	<b>FAT</b>
		#+NER Forever Lady 2673	-008

CED	BEPD	WEPD	YEPD	MILK	\$M	\$W	\$F	\$G	\$B	\$C
+10	-5	+55	+112	+36	+48	+67	+100	+63	+163	+259

- Consigned by: Double D Angus, Carlisle, AR
- Top 3% \$B, Top 4% \$F, Top 10% RE & \$G, Top 15% BW, Top 20% CED, YW, CW & Marb, Top 25% \$W
- Solid performance breeding in this Ten Speed son out of a Bennett Absolute daughter.
- Modern genetics that is sure to be a tremendous success.

# 14 CAMPTOWN RIGHT WAY 8016

Birth Date: 3-12-2018 Bull +\*19365337 Tattoo: 8016

SAV Right Way 3670 +*17633794	+Rito 707 of Ideal 3407 7075	#RR Rito 707	<b>CW</b>
ANGUSGS Buford Burgess 9114 16538398	SAV Elba 5383	Ideal 3407 of 1418 076	+39
	#SAV Net Value 7465	#SAV 8180 Traveler 004 [RDF]	<b>MARB</b>
	J Bar 7 Miss Burgess 5553	SAV Elba 1094	+26
		#SAV Net Worth 4200	<b>REA</b>
		SAV Madame Pride 0075	+37
		#BR Midland	<b>FAT</b>
		+C&H Miss Burgess 3068	+026

CED	BEPD	WEPD	YEPD	MILK	\$M	\$W	\$F	\$G	\$B	\$C
+5	+1.4	+51	+81	+25	+60	+59	+79	+30	+109	+201

- Consigned by: Camptown Angus, Paragould, AR
- A super thick made Right Way son out of the famous donor cow, Buford Burgess 9114. 9114 has been a foundation donor at Camptown Angus.
- This combination should work well for his new owner.



Buford Burgess 9114 - Dam of Lot 14

# 15 SL COWBOY UP 81

Birth Date: 3-10-2018 Bull 19493796 Tattoo: 81

HA Cowboy Up 5405 *18286467	*HA Outside 3008	*KG Solution 0018	<b>CW</b>
CSC 5103 Blackcap 214 +17371667	#*HA Blackcap Lady 1602	#*HA Ever Lady 1575	+37
	#+ SAV Bismarck 5682 [RDF]	#Sitz Upward 307R	<b>MARB</b>
	SH Blackcap M36 5103	HA Blackcap Lady 5515	+33
		#+*GAR Grid Maker	<b>REA</b>
		SAV Abigale 0451	+53
		#BR Midland	<b>FAT</b>
		+*Kahn Blackcap M36	+016

CED	BEPD	WEPD	YEPD	MILK	\$M	\$W	\$F	\$G	\$B	\$C
+9	+1.5	+65	+112	+15	+44	+53	+89	+40	+129	+211

- Consigned by: Smith Livestock LLC, Koskonong, MO
- Top 20% WW & YW, Top 25% \$F
- A thick made powerful Cowboy Up son out of a high volume Bismarck daughter.
- This one will sire style that will grow.

# 16 M A BALDRIDGE CONFIDENCE F5

Birth Date: 3-7-2018 Bull \*19070540 Tattoo: F5

Baldridge Colonel C251 [RDF] +*18493773	+baldridge Xpand x743	#*Hoover Dam	<b>CW</b>
ANGUSGS Spruce Mtn Fanny 6040 +*18419186	*Baldridge Isabel Y69	Baldridge Queen S87	+49
	*VAR Generation 2100	#*Styles Upgrade J59	<b>MARB</b>
	+*FWY Confidence of 9360 2604	+Baldridge Isabel T935	+74
		#*Connealy Consensus 7229	<b>REA</b>
		+*Sandpoint Blackbird 8809	+90
		#*Connealy Confidence 0100	<b>FAT</b>
		+*2 Bar Mile High 9360	-009

CED	BEPD	WEPD	YEPD	MILK	\$M	\$W	\$F	\$G	\$B	\$C
+6	+6	+67	+123	+30	+67	+77	+85	+64	+149	+260

- Consigned by: Mahan Angus, Center Ridge, AR
- Top 10% YW, RE & \$W, Top 15% WW & \$ G, Top 20% \$B, Top 25% Marb
- A thick made Baldridge Colonel son out of a great Generation 21 dam back to the highly acclaimed donor, 2 Bar Mile High 9360.
- He is sure to sire the right kind.
- \$C +264, Top 15%

# 17 CIRCLE M ZA32 2014

Birth Date: 11-11-2017 Bull \*18976487 Tattoo: E53

BUBS Gateway ZA32 *17548494	#*Connealy Stimulus 8419	#+HA Power Alliance 1025	<b>CW</b>
ANGUSGS CBF Pioneer 2014 18022030	Hickory Hill Missy 032	Black Creesa of Conanga 5332	+28
	#SAV Pioneer 7301	TC Aberdeen 759	<b>MARB</b>
	CBF Objective 2010	Hickory Hill Missy 820	+40
		#*SAV Final Answer 0035 [RDF]	<b>REA</b>
		SAV Blackbird 5297	+41
		#*SS Objective T510 0T26	<b>FAT</b>
		+GAR Predestined 2097	+006

CED	BEPD	WEPD	YEPD	MILK	\$M	\$W	\$F	\$G	\$B	\$C
+8	+2.6	+55	+104	+23	+70	+53	+56	+39	+96	+195

- Consigned by: Mahan Angus, Center Ridge, AR
- BUBS Gateway is prolific sire of good cattle. His sons excel.
- This one is out of a great Pioneer dam, back to an Objective daughter.
- Solid genetics here.

# 18 SF TURNING POINT 1801

Birth Date: 3-2-2018 Bull +\*19460249 Tattoo: 1801

Stevenson Turning Point +*18434747	#*Plattermere Weigh Up K360 [RDF]	#Sitz Upward 307R	<b>CW</b>
ANGUSGS AVF Elba 2392 +*17537700	#+*Stevenson Pride I167x	#Barbara of Plattermere 337	+49
	#SAV Iron Mountain 8066	#+ SAV Bismarck 5682 [RDF]	<b>MARB</b>
		#*FSHK Pride 180	+33
		TC Gridiron 258	<b>REA</b>
		SAV Madame Pride 3249	+47
		SAV 8180 Traveler 004 [RDF]	<b>FAT</b>
		SAV Elba 1094	-003

CED	BEPD	WEPD	YEPD	MILK	\$M	\$W	\$F	\$G	\$B	\$C
+10	+0	+65	+121	+20	+58	+63	+107	+38	+145	+246

- Consigned by: Speer Farms, Marmaduke, AR
- Top 5% \$F, Top 10% YW, Top 15% WW, Top 20% CED, CW & \$B, Top 25% BW & \$W
- Just what a top herd needs in this bull - low birth and strong growth.
- He will add pounds to your calf crop and can be used on heifers.



SF Turning Point 1801 - Lot 18



# 19 HAYPATS JOURNEY 88F

Birth Date: 3-1-2018

Bull 19344203

Tattoo: 88F

WR Journey-1X74 +*16924332	*B/R Future Direction 4268 2 Bar 5050 New Design 7831	#CA Future Direction 5321 B/R Ruby 9114 #+GAR New Design 5050 2 Bar 036 Lady 0107 **SAV Final Answer 0035 [RDF] Happy Dell of Conanga 262 #+SAV Bismarck 5682 [RDF] +SH Blackcap M36 5103	<b>CW</b> I+23 <b>MARB</b> I+.56 <b>REA</b> I+.46 <b>FAT</b> I+.026
-------------------------------	--	--	--

CED	BEPD	WEPD	YEPD	MILK	\$M	\$W	\$F	\$G	\$B	\$C
+13	-8	+48	+78	+27	+60	+57	+82	+46	+127	+225

- Consigned by: Hay Pat Farm, Center Ridge, AR
- Top 10% CED, Top 15% BW
- An attractive, low birth EPD Journey son out of a really good Right Answer dam back to Bismarck.
- A bull developed to last a long time in your herd.

# 20 FAITHS JOURNEY 48F [DDP]

Birth Date: 2-23-2018

Bull 19344209

Tattoo: 48F

WR Journey-1X74 +*16924332	*B/R Future Direction 4268 2 Bar 5050 New Design 7831	#CA Future Direction 5321 B/R Ruby 9114 #+GAR New Design 5050 2 Bar 036 Lady 0107 **Connealy Consensus 7229 #Eura Elga of Conanga 9109 #Connealy Thunder [RDF] GPN Queen 0N5	<b>CW</b> N/A <b>MARB</b> N/A <b>REA</b> N/A <b>FAT</b> N/A
-------------------------------	--	---	--

CED	BEPD	WEPD	YEPD	MILK	\$M	\$W	\$F	\$G	\$B	\$C
+8	+1.5	+55	+94	+27	+72	+57	N/A	N/A	N/A	N/A

- Consigned by: Faith Taylor, Center Ridge, AR
- Top 15% \$M
- This is a great young Journey son out of a dam that combines Black Granite and Thunder.
- A super good prospect that is sure to get the job done.

# 21 RT KING FORTRESS 223

Birth Date: 2-23-2018

Bull 19232002

Tattoo: 223

KCF Bennett Fortress [RDF] +*17259012	**Connealy Consensus [RDF] *Thomas Patricia 9705	#KMK Alliance 6595 187 Blinda of Conanga 004 **SS Objective T510 0T26 + Thomas Patricia 71138 **AAR Ten X 7008 SA +*Deer Valley Rita 0274 #Connealy Thunder [RDF] Dogwood 17 Queen Mother 18	<b>CW</b> +64 <b>MARB</b> +1.18 <b>REA</b> +1.16 <b>FAT</b> -0.77
--	---	---	--

CED	BEPD	WEPD	YEPD	MILK	\$M	\$W	\$F	\$G	\$B	\$C
+8	+1.5	+79	+139	+28	+50	+85	+114	+47	+161	+259

- Consigned by: Rob Thornton, Carlisle, AR
- Top 1% RE, Top 2% WW & YW, Top 3% \$W & \$F, Top 5% CW, Top 10% \$B
- Look at this attractive Bennett Fortress son out of a dam combining All In and Connealy Thunder.
- Here is one that is sure to get the job done. Quality herd bull prospect here.



KCF Bennett Fortress - Sire of Lot 21

# 22 HAYPATS JOURNEY 18F

Birth Date: 2-19-2018

Bull 19344788

Tattoo: 18F

WR Journey-1X74 +*16924332	*B/R Future Direction 4268 2 Bar 5050 New Design 7831	#CA Future Direction 5321 B/R Ruby 9114 #+GAR New Design 5050 2 Bar 036 Lady 0107 **+*GAR Grid Maker SAV Abigale 0451 BUBS Earl X79 HPF Rockette 29W	<b>CW</b> N/A <b>MARB</b> N/A <b>REA</b> N/A <b>FAT</b> N/A
-------------------------------	--	---	--

CED	BEPD	WEPD	YEPD	MILK	\$M	\$W	\$F	\$G	\$B	\$C
+9	+4	+45	+75	+26	+57	+49	N/A	N/A	N/A	N/A

- Consigned by: Hay Pat Farm, Center Ridge, AR
- Here you have a Journey son with all the qualities you need in a herd sire!
- His dam is by the highly popular Bismarck female.

# 23 HAF POWER TOOL 802

Birth Date: 2-14-2018

Bull 19189627

Tattoo: 802

McCF Power Tool B977 18178815	*+*PA Power Tool 9108 Brockmere Zara 9077	**GAR Predestined *Shamrocks Beebee Queen 3095 *Connealy Power One Brockmere Zara 7048 **Sitz Dash 10277 Harris Mary 773 #LT 598 Bando 9074 Hills Cindy 615	<b>CW</b> +38 <b>MARB</b> +55 <b>REA</b> +39 <b>FAT</b> +0.32
----------------------------------	--	--	--

CED	BEPD	WEPD	YEPD	MILK	\$M	\$W	\$F	\$G	\$B	\$C
+11	+2	+61	+101	+32	+52	+75	+57	+44	+101	+183

- Consigned by: Hill Angus, Paragould, AR
- Top 10% \$W, Top 15% CED, Top 25% BW
- A true heifer bull and one that adds growth and maternal traits.
- His dam combines great qualities from two very popular bulls - Sitz Dash and Bando 9074.
- Fertility and DNA tested.

# 24 SSR TEDDY 2528 [AMF-CAF-D2F-DDF-M1F-NHF-OHF-OSF-RDF]

Birth Date: 2-1-2018

Bull \*19119149

Tattoo: 2528

SAV Brilliance 8077 **16107774	*+SAV Bismarck 5682 [RDF] SAV Blackcap May 5270	**+*GAR Grid Maker SAV Abigale 0451 *SAV 8180 Traveler 004 [RDF] #+SAV May 2420 **Connealy Onward Sitz Henrietta Pride 81M #+B/R New Frontier 095 +VDAR Beauty 9542	<b>CW</b> +49 <b>MARB</b> +30 <b>REA</b> +91 <b>FAT</b> -0.21
-----------------------------------	--	--	--

CED	BEPD	WEPD	YEPD	MILK	\$M	\$W	\$F	\$G	\$B	\$C
+2	+3.4	+55	+94	+25	+46	+51	+103	+44	+147	+237

- Consigned by: Sugar Spring Ranch, Lincoln, AR
- Top 10% RE & \$F, Top 20% \$B, Top 25% CW
- An outstanding Brilliance son out of an Upward daughter.
- This is the bull that Hailey Ann Royce showed at Junior Nationals and State Fair.
- He combines eye appeal with great performance.

# 25 HELMS C013 of C03 F1

Birth Date: 1-13-2018

Bull 19096102

Tattoo: F1

Helms Signature of 0137 C013 18356705	*Boyd Signature 1014 KLR Queenie 0137 +JACS Answer 9235	**Kesslers Frontman R001 *Boyd Erica Dianna 9054 #MCC Daybreak Plattemere Queenie 815 **SAV Final Answer 0035 [RDF] +Jacs Blackcap 4301 **AAR Ten X 7008 SA Baker's Blackbird 6050	<b>CW</b> N/A <b>MARB</b> N/A <b>REA</b> N/A <b>FAT</b> N/A
--	---	---	--

CED	BEPD	WEPD	YEPD	MILK	\$M	\$W	\$F	\$G	\$B	\$C
I+5	I+2.3	I+60	I+110	I+28	+67	+57	N/A	N/A	N/A	N/A

- Consigned by: Helms Farms, Drasco, AR
- Top 25% YW
- Look at the combination here - Kesslers Frontman, MCC Daybreak, Final Answer and Ten X. These are many of the very top bulls of the Angus breed in recent years.
- Will be vaccinated including blackleg, wormed, BSE and AngusGS tested all within 30 days of sale.

**26****HALEY HILL SOUTHERN CHARM 651**

Birth Date: 1-11-2018

Bull \*19203125

Tattoo: 651

\*Silveiras Conversion 8064  
**BUBS Southern Charm AA31**  
 \*17853196 \*Hickory Hill Erica 009

**ANGUS**  
 #BC Marathon 7022

**CMH Toreby Queen 610**  
 \*16592192 Jacs Toreby Queen 4721

#+BT Crossover 758N  
 +EXG Saras Dream S609 R3  
 #\*Connealy Stimulus 8419  
 Hickory Hill Erica TA32  
 OCC Kirby 633K  
 Gibbet Hill Mignonne E37  
 #Bon View New Design 878  
 #+Jacs Toreby Queen 1308

**CW**  
 +53  
**MARB**  
 +.78  
**REA**  
 +.63  
**FAT**  
 +.006

CED	BEPD	WEPD	YEPD	MILK	\$M	\$W	\$F	\$G	\$B	\$C
+1	+4.6	+70	+115	+26	+49	+66	+97	+61	+158	+254

- Consigned by: Haley Hill Farm, Quitman, AR
- BW 78 WW 620
- Top 10% WW, Top 15% \$B, Top 20% YW, CW & \$G, Top 25% MARB, \$W & \$F
- Southern Charm has been one of the most consistent sires of quality offspring to come along in present times.
- The dam of this bull is a solid producer from the JACS Program.

**27****HALEY HILL RAMPAGE 654**

Birth Date: 12-20-2017

Bull 19226178

Tattoo: 654

#MCC Daybreak  
**Quaker Hill Ramage OA36** [RDF]  
 +\*16925771 +\*QHF Blackcap 6E2 of 4V16 4355

**ANGUS**  
 #BC Marathon 7022

**Haley Hill MS DHD 620**  
 17581751 Jac's MS DHD 2788

#+Boyd New Day 8005  
 #MCC Miss Focus 134  
 Ideal 4355 of OT26 2440  
 \*QHF Blackcap 4V16 of 1H8  
 OCC Kirby 633K  
 Gibbet Hill Mignonne E37  
 #+Pine Creek Traveler 124-1107  
 RCC MS DHD 615

**CW**  
 +61  
**MARB**  
 +.34  
**REA**  
 +1.08  
**FAT**  
 -.025

CED	BEPD	WEPD	YEPD	MILK	\$M	\$W	\$F	\$G	\$B	\$C
+1	+4.8	+79	+130	+12	+40	+54	+100	+49	+149	+233

- Consigned by: Haley Hill Farm, Quitman, AR
- BW 80 WW 670
- Top 2% WW & RE, Top 5% YW, Top 10% CW, Top 15% \$F, Top 25% \$B
- A thick growthy son of the ever popular Rampage.
- This bull will sire calves that will push the scales down when weaned!

**28****HAF POWER TOOL 703**

Birth Date: 12-3-2017

Bull 19189628

Tattoo: 703

#+\*PA Power Tool 9108  
**McF Power Tool B977**  
 18178815 Brockmere Zara 9077

**ANGUS**  
 DA 878 New Day 111 218

**DA Ms Bass Bkbird 912 440**  
 18135522 DA Ms Bass Blackbird 420 912

#\*GAR Predestined  
 \*Shamrocks Beebee Queen 3095  
 #Connealy Power One  
 Brockmere Zara 7048  
 #\*B/R New Day 454  
 DA Bkbird Ethel 929 111  
 #\*Connealy All Around  
 DA Ms Bass Bkbird 815 420

**CW**  
 +21  
**MARB**  
 +.80  
**REA**  
 +.54  
**FAT**  
 +.003

CED	BEPD	WEPD	YEPD	MILK	\$M	\$W	\$F	\$G	\$B	\$C
+14	-1.1	+36	+66	+36	+54	+55	+58	+61	+119	+208

- Consigned by: Hill Angus, Paragould, AR
- Top 4% CED, Top 10% BW, Top 20% MARB & \$G
- A top heifer bull with a CED in the top 4% of the breed!!
- Low birth weight bull with excellent milk and carcass traits.
- His dam traces to New Day 454 and All Around.
- Should sire the right kind. Fertility and genomic tested.

**HA Cowboy Up 5405** - Sire of Lot 31**29****SSR INSIGHT 3357**

Birth Date: 9-29-2017

Bull 19258091

Tattoo: 3357

PVF Insight 0129  
 +\*16805884

**ANGUS**  
 #Connealy Right Answer 746

**SSR Forever Right Answer335**  
 18472193 \*SSR Forever Brilliant 8333

#SAV Brilliance 8077  
 +\*PVF Missie 790

#+SAV Bismarck 5682 [RDF]  
 SAV Blackcap May 5270  
 #+\*PVF New Horizon 001  
 PVF Miss Raptor 024  
 #\*SAV Final Answer 0035 [RDF]  
 Happy Dell of Conanga 262  
 #\*SAV Brilliance 8077  
 +LaGrand Forever 4833

**CW**  
 +43  
**MARB**  
 +.25  
**REA**  
 +.91  
**FAT**  
 -.006

CED	BEPD	WEPD	YEPD	MILK	\$M	\$W	\$F	\$G	\$B	\$C
+6	+1.1	+50	+93	+37	+61	+66	+101	+40	+141	+244

- Consigned by: Sugar Spring Ranch, Lincoln, AR
- Top 15% \$F, Top 25% \$W
- Here you have a son of the highly popular PVF Insight son out of a great young Right Answer dam.
- He is the type of bull to move your program forward.

**Quaker Hill Ramage OA36** - Sire of Lots 27 and 30**30****T F A RAMPAGE 737**

Birth Date: 9-23-2017

Bull 18967694

Tattoo: 737

#MCC Daybreak  
**Quaker Hill Ramage OA36** [RDF]  
 +\*16925771 +\*QHF Blackcap 6E2 of 4V16 4355

**ANGUS**  
 +\*EXAR Resistol 3710B

**EXAR Evas 5327**  
 18184106 \*EXAR Evas 6092

#+Boyd New Day 8005  
 #MCC Miss Focus 134  
 Ideal 4355 of OT26 2440  
 \*QHF Blackcap 4V16 of 1H8  
 #\*AAR Ten X 7008 SA  
 +Sitz Henrietta Pride 643T  
 #\*Connealy Final Product  
 +Exar Evas 71020

**CW**  
 +71  
**MARB**  
 +.40  
**REA**  
 +1.45  
**FAT**  
 -.087

CED	BEPD	WEPD	YEPD	MILK	\$M	\$W	\$F	\$G	\$B	\$C
+3	+2.9	+86	+151	+25	+53	+82	+131	+63	+194	+305

- Consigned by: Twisted Fork Angus Farms, Collierville, TN
- Top 1% WW, YW, RE, \$F & \$B, Top 2% CW, Top 4% \$W, Top 15% \$G
- This is a really exciting Rampage son out of a dam by Resistol and out of the EXAR Eva's family of females.
- Just look at his powerful growth numbers.

**31****BANNER COWBOYUP 1798**

Birth Date: 9-22-2017

Bull 19035641

Tattoo: 1798

\*HA Outside 3008  
**HA Cowboy Up 5405**  
 \*18286467 #\*HA Blackcap Lady 1602

**ANGUS**  
 #+SAV Providence 6922

**Thunderfoot Mignonne W105**  
 +16833410 +BC Mignonne's Lori 492 PR

\*KG Solution 0018  
 #\*HA Ever Lady 1575  
 #Sitz Upward 307R  
 HA Blackcap Lady 5515  
 #+SAV 004 Predominant 4438  
 SAV May 7238  
 OCC Legend 616L  
 Gibbet Hill Mignonne E37

**CW**  
 +34  
**MARB**  
 +.22  
**REA**  
 +.32  
**FAT**  
 +.011

CED	BEPD	WEPD	YEPD	MILK	\$M	\$W	\$F	\$G	\$B	\$C
+8	+2.5	+64	+111	+18	+46	+53	+78	+29	+107	+185

- Consigned by: Cotter Farms, Henderson, AR
- Top 20% WW, Top 25% YW
- Look at this strong growth son of Cowboy Up.
- His dam is a product out of the embryo program at Thunderfoot.



# 32 JBS Big Kase JB68 [RDC-AMF-CAF-D2F-DDF-M1F-NHF-OHF-OSF]

Birth Date: 9-16-2017 Bull 19202119 Tattoo: JB68

JBS Kase 2201 18416124	JBS Connealy Jack	#Connealy Right Answer 746 Nakita JB3	<b>CW</b> I+24
	JBS Connealy Pam	#Connealy Right Answer 746 Christina's JB5	<b>MARB</b> I+.33
	#Nichols Extra H6	#*N Bar Emulation EXT Nichols Eileen May F261	<b>REA</b> I+.25
Mattie Mae JB6 16974328	Boz Easy Rider B507	#+SAV 5175 Bando 0699 Double TT MS E Rider 5254	<b>FAT</b> I+.018

CED	BEPD	WEPD	YEPD	MILK	\$M	\$W	\$F	\$G	\$B	\$C
+5	+1.5	+49	+87	+24	+64	+51	+68	+33	+101	+195

- Consigned by: Spradlin Farms, Bald Knob, AR
- Take a look at this super pedigree in this pasture ready bull!
- His dam combines EXT and Bando 0699.
- He will produce females worthy of using in any herd.



SAV Beacon 0008- Sire of Lot 36

# 33 SL CONFIDENCE PLUS 706

Birth Date: 9-16-2017 Bull 19445333 Tattoo: 706

Connealy Confidence Plus *17585576	#*Connealy Confidence 0100 Elbanna of Conanga 1209	Connealy Tobin Becka Gala of Conanga 8281 #*Connealy Consensus Elbasta of Conanga 9703 #*B/R New Day 454 +*Sandpoint Blackbird 8809	<b>S CW</b> +50	<b>D CW</b> I+22
	#+*VAR Reserve 1111	#*B/R New Day 454 +*Sandpoint Blackbird 8809	<b>MARB</b> +.86	<b>MARB</b> I+.56
B&M Bonnie 513 18531363	+Fink Bonnie 6523 2496 24J	#+BT Right Time 24J +Finks Bonnie 2496 9326 323	<b>REA</b> +1.11	<b>REA</b> I+.70
			<b>FAT</b> +.018	<b>FAT</b> I-.014

CED	BEPD	WEPD	YEPD	MILK	\$M	\$W	\$F	\$G	\$B	\$C
+11	+1	+66	+129	+27	+84	+84	+102	+70	+172	+307
I+9	I+1.0	I+47	I+80	I+22	+58	+49	+69	+53	+122	+216

- Consigned by: Smith Livestock LLC, Koshkonong, MO
- This long bodied, heavy muscled son of Connealy Confidence Plus should fix the need for any progressive beef producer.
- His dam is by Reserve and out of a good producing Fink's bred dam.

# 34 059 BOLD SIGNATURE 706

Birth Date: 12-11-2017 Bull 19005245 Tattoo: 706

Boyd Signature 1014 *16916267	#*Kesslers Frontman R001 *Boyd Erica Dianna 9054	#Connealy Front Page 0228 Kesslers Bell 0024 Boyd Next Day 6010 +Boyd Erica Dianna 606	<b>CW</b> I+.53
	#WAR Alliance 9126 6006	#Sitz Alliance 6595 WAR Bando 6006 598 4053	<b>MARB</b> I+.08
LakeView Ultra Alliance 103 17098144	#LakeView Ultra Objective 802	#Quaker Hill Objective 3J15 #LakeView Ultra Lacy 216	<b>REA</b> I+.78
			<b>FAT</b> I+.001

CED	BEPD	WEPD	YEPD	MILK	\$M	\$W	\$F	\$G	\$B	\$C
I+2	I+2.4	I+66	I+114	I+29	+53	+74	+104	+29	+134	+227

- Consigned by: Old 59 Cattle Company, Mason, TN
- Top 10% \$W & \$F, Top 15% WW, Top 20% YW, CW & RE
- A tremendous Boyd Signature son out of a War Alliance dam from the LakeView Herd.
- You have here solid breeding backed by eye appeal. This one should sire the right kind.

# 36 LCF BEACON 588D [DDP]

Birth Date: 3-16-2017 Bull 19044303 Tattoo: 588D

SAV Beacon 0008 *16687591	#+SAV Bismarck 5682 [RDF] #SAV Madame Pride 8180	#+*GAR Grid Maker SAV Abigale 0451 #SAV Net Worth 4200 SAV Madame Pride 0102 #*Mytty In Focus [RDF] BPF Black Cash 341	<b>CW</b> +55
	#*BPF Special Focus 504	#*Mytty In Focus [RDF] BPF Black Cash 341	<b>MARB</b> +.52
LCF Rachel 634 18620378	+*Banner Rachel A170	#PVF ALL PAYDAY 729 +Werner Rachel 0073	<b>REA</b> +.98
			<b>FAT</b> +.003

CED	BEPD	WEPD	YEPD	MILK	\$M	\$W	\$F	\$G	\$B	\$C
+6	+1.7	+63	+112	+26	+56	+66	+103	+53	+156	+258

- Consigned by: Cotter Farms, Henderson, AR
- A Beacon son out of a Special Focus dam.
- Note, the granddam is from the Banner herd in Tennessee.
- He should sire really attractive offspring.

# 37 BUBS TOP GAME 9E

Birth Date: 2-8-2017 Bull \*19093359 Tattoo: 9E

Sitz Top Game 561X *16559105	#+GDAR Game Day 449 [RDF] #Sitz Pride 88T	#+Boyd New Day 8005 #GDAR Miss Wix 474 #*Connealy Onward Sitz Pride 46P #*Mytty In Focus [RDF] Bubs Kisee L16 +Bubs Don Carlo J76 Bubs Crystal K20	<b>CW</b> +28
	BUBS Dodge City S10		<b>MARB</b> +.69
BUBS Crystal U8 16302498	BUBS Crystal S20		<b>REA</b> +.43
			<b>FAT</b> -.005

CED	BEPD	WEPD	YEPD	MILK	\$M	\$W	\$F	\$G	\$B	\$C
+9	+1.1	+53	+97	+40	+75	+77	+57	+55	+111	+219

- Consigned by: Hill Angus, Paragould, AR
- Top 10% \$W, Top 15% \$M
- Don't miss this son of Sitz, Top Game 561X. 561X has been one of the most consistent sires of recent times. His offspring have been highly desirable.
- He is in the top 1% for Milk and has a \$W in the top 10% of the breed.
- The dam of this attractive bull is from the Bubs Ranch.
- Fertility and genomic tested.

# 35 JBS Kase Manager JB67 [AMF-CAF-D2F-DDF-M1F-NHF-OHF-OSF-RDF]

Birth Date: 7-21-2017 Bull 19202118 Tattoo: JB67

JBS Kase 2201 18416124	JBS Connealy Jack	#Connealy Right Answer 746 Nakita JB3	<b>CW</b> I+.32
	JBS Connealy Pam	#Connealy Right Answer 746 Christina's JB5	<b>MARB</b> I+.29
	Windsor's Black Knight U01	#*Mytty In Focus [RDF] Miss RMBC Dateline	<b>REA</b> I+.25
Kelsey's JB7 16943545	Circle N Precise 8C	Circle N Midlands Boy Day's Pride Ever Precise3243	<b>FAT</b> I+.008

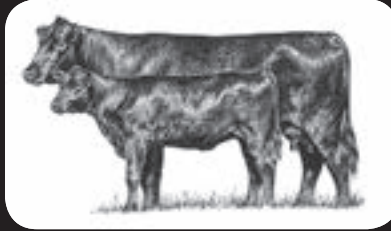
CED	BEPD	WEPD	YEPD	MILK	\$M	\$W	\$F	\$G	\$B	\$C
+9	+4	+49	+88	+25	+58	+54	+83	+32	+115	+207

- Consigned by: Spradlin Farms, Bald Knob, AR
- Top 20% CED
- A long bodied, heavy muscled bull offered here and ready to go to work for you.
- He is a low birth EPD bull that would work well on heifers.



Sitz Top Game 561X - Sire of Lot 37

# Mahan Angus



**Stephen Mahan**  
501-514-3132  
stephenmahan1@aol.com



**HICKORY HILL ERICA 009**

Dam of BUBS Southern Charm AA31

This female anchors our tremendous donor program.

Our featured lots  
in this sale are  
Lots 16,17 and  
Lots 67-72.



**SPRING COVE RENO 4021**

Top selling bull of the 2018 Spring Cove Sale.  
Mahan Angus is building a strong future with  
this very potent sire.

**BULLS, FEMALES & EMBRYOS FOR SELL AT ALL TIMES**

**Come by and visit - you are always welcome!**

**mahanangus.com | Mahan Angus Facebook**

**R J S ANGUS**



## **RJS QUALITY ANGUS**

Registered Angus Cattle for sale  
private treaty year-round.

**Our featured lots in this sale are  
Lots 97 - 102**

## **RON SOUTH**

6585 Elephant Road  
Gilmer, TX 75644  
Cell: 903-790-5039





**Unico Bank**

PROUDLY SUPPORTS THE  
**NORTHEAST ARKANSAS  
ANGUS ASSOCIATION**



**Unico Bank**

[WWW.UNICOBANK.COM](http://WWW.UNICOBANK.COM)

15 LOCATIONS READY TO SERVE YOU!



**JOHN DEERE**



## **LEGACY EQUIPMENT**

1704 Hwy 412 East  
Paragould, AR 72450  
870-340-2189



**11625 Hwy 112 W  
Paragould, AR**

**Stephen Riggs, Store Manager  
870-573-6970**

***bakerimplement.com***



## **TAYLOR ANGUS RANCH**

**2821 Love Hollow  
Mt. Pleasant, AR  
870-291-1295**



**Pam & Lester Taylor**

# Females | Lots 39-126

## 39 LAKEVIEW LACY XL 803

Birth Date: 9-7-2018 Cow \*19310774 Tattoo: 803

SydGen Enhance 18170041	*SydGen Exceed 3223 [RDF]	+*SydGen Googol	<b>CW</b>
ANGUSGS	SydGen Rita 2618	+*SydGen Forever Lady 1255	+56
LakeView Lacy X 610 18653154	#*AAR Ten X 7008 SA	#SydGen Liberty GA 8627 [RDF]	<b>MARB</b>
		#Fox Run Rita 9308	+80
		#*Mytty In Focus [RDF]	<b>REA</b>
		#AAR Lady Kelton 5551	+58
		#Quaker Hill Objective 3J15	<b>FAT</b>
		#LakeView Ultra Lacy 216	-013

CED	BEPD	WEPD	YEPD	MILK	\$M	\$W	\$F	\$G	\$B	\$C
+11	+1	+69	+130	+24	+67	+73	+106	+63	+169	+286

- Consigned by: LakeView Angus, Powhatan, AR
- These Enhance daughters have been topping sales across the country and for good reason. Enhance is the #1 \$C bull in the breed right now. He has it all and so does she. Simply beautiful young cow here out of a long line of Pathfinder Cows. She has all the markings of a top donor cow. A don't miss opportunity here.
- Top 10% WW, \$W, \$F and \$B, Top 4% in YW and, Top 1% in CW on her DNA panel!
- She will be wormed within 30 days of sale with all AHIR data through yearling and parentage verified. Ultrasound and DNA tested by Sale Day. Certified Brucellosis Free Herd #ARB27-HC. John's complete herd tested negative, closed herd since 2004.

## 40 BCA QUALITY QUEEN PA 02

Birth Date: 9-2-2013 Cow 17793620 Tattoo: A02

PA Safeguard 021 #*16772185	#+GAR New Design 5050	#B/R New Design 036	<b>CW</b>
ANGUSGS	#+PA Lorna Marshall 2905-730	GAR Precision 706	+25
KAR Quality Queen 765 16074210	#*SS Objective T510 0T26	#+Woodhill Foresight	<b>MARB</b>
		Petes 2905 Dateline Marshall	+99
		#SS Traveler 6807 T510	<b>REA</b>
		SS Miss Rita R011 7R8	+52
		#CA Future Direction 5321	<b>FAT</b>
		KM Quality Queen 1160	-011

CED	BEPD	WEPD	YEPD	MILK	\$M	\$W	\$F	\$G	\$B	\$C
+6	+0	+45	+85	+28	+43	+51	+62	+71	+133	+216

- Consigned by: Big Creek Angus, Paragould, AR
- Top 4% \$G, Top 10% Marb, Top 20% BW, Top 25% \$B
- This is a really good docile, slick haired, deep sided, easy fleshing cow that has a great udder. She is a low birth female.
- We are keeping two of her daughters, both are doing great with good udders also.
- She has bred back AI every time.
- Lot 40A Sex: Heifer DOB: 9-10-19 Sire: Deer Valley Growth Fund

## 41 B C A QUALITY QUEEN C-03

Birth Date: 4-22-2015 Cow 18415525 Tattoo: C03

Connealy Final Product #*15848422	*Connealy Product 568	#GAR Retail Product	<b>CW</b>
ANGUSGS	#Ebonista of Conanga 471	Pride Fine of Conanga 566	+20
KAR Quality Queen 765 16074210	#*SS Objective T510 0T26	#Connealy Deep Canyon 454	<b>MARB</b>
		Ebonista of Conanga 5469	+69
		#SS Traveler 6807 T510	<b>REA</b>
		SS Miss Rita R011 7R8	+28
		#CA Future Direction 5321	<b>FAT</b>
		KM Quality Queen 1160	+004

CED	BEPD	WEPD	YEPD	MILK	\$M	\$W	\$F	\$G	\$B	\$C
+6	+7	+48	+84	+22	+48	+50	+57	+52	+109	+189

- Consigned by: Big Creek Angus, Paragould, AR
- This cow is a good 4 year old. She is docile and good footed with an excellent udder.
- She sells with a bull calf born on 3-10-19 that weighed 80 lbs.
- Bred to ORLgens Southern Charm on 5-22-19. She has bred back AI every time.
- Lot 41A Sex: Bull DOB: 3-10-19 Sire: Bar R Jet Black 5063



Bar R Jet Black 5063

## 42 BCA DIXIE ERICA C06

Birth Date: 5-4-2015 Cow 18323820 Tattoo: C06

SAV Priority 3064 17633673	#*SAV Priority 7283	#*SAV Final Answer 0035 [RDF]	<b>CW</b>
ANGUSGS	+*SAV Blackcap May 1780	#+SAV Blackcap May 5530	+57
Duff EM 8146 DixieErica 7132 +*16795811	#+OCC Emblazon 854E	+Rito 707 of Ideal 3407 7075	<b>MARB</b>
	#+OCC Dixie Erica 8146	+SAV May 2397	+20
		#DHD Traveler 6807	<b>REA</b>
		Dixie Erica of CH 1019	+47
		#OCC Anchor 771A	<b>FAT</b>
		OCC Dixie Erica 764C	+021

CED	BEPD	WEPD	YEPD	MILK	\$M	\$W	\$F	\$G	\$B	\$C
+4	+3.4	+65	+114	+21	+64	+60	+113	+29	+142	+248

- Consigned by: Big Creek Angus, Paragould, AR
- 18323820 Tattoo C06
- Top 2% \$F, Top 3% CW, Top 10% WW & YW, Top 20% \$B, Top 25% \$W
- This four-year-old dam is out of OCC Emblazon 854E and her dam was a donor.
- She is super easy fleshing, milks really good and we are retaining her last heifer calf.
- She is a moderate birth cow and will do a good job in any herd.
- Due to calve 10-20-19 to AI sire, AAR Ten X 7008 S A.

## 43 B C A BISMARCK D-23

Birth Date: 9-9-2016 Cow \*18789142 Tattoo: D23

SAV Bismarck 5682 [RDF] #+15109865	#+*GAR Grid Maker	#GDAR Traveler 044	<b>CW</b>
ANGUSGS	#*KCF Bennett Absolute	GAR Precision 2536	+68
TA Miss Absolute 3AB 17755647	TA Miss Hi Ultimate 19X	#Schoenes Fix It 826	<b>MARB</b>
		SAV Abigale 6062	+46
		#*SAV Final Answer 0035 [RDF]	<b>REA</b>
		Thomas Miss Lucy 5152	+90
		#GAR Ultimate	<b>FAT</b>
		TA Scotch Lass P7	+006

CED	BEPD	WEPD	YEPD	MILK	\$M	\$W	\$F	\$G	\$B	\$C
+3	+2.8	+70	+129	+32	+37	+74	+130	+49	+179	+269

- Consigned by: Big Creek Angus, Paragould, AR
- Top 10% \$F, Top 15% WW, Top 20% \$W, Top 25% YW & \$B
- This is a very good 3 year old cow that has done a great job raising her first calf, a heifer that we kept.
- She has moderate birth, good feet and legs plus has good fleshing ability.
- Bred AI to Jet Black 5063 who is at the top of the list of ORLgen sires.
- Lot 43A Sex: Heifer DOB: 8-21-19 Sire: Bar R Jet Black 5063

## 44 HILLS CINDY 825

Birth Date: 10-1-2018 Cow 19422872 Tattoo: 825

McCF Power Tool 8977 18178815	#+*PA Power Tool 9108	#*GAR Predestined	<b>CW</b>
ANGUSGS	HAF Traveler 8180 500	*Shamrocks Beebee Queen 3095	+15
Hills Cindy 611 15581037	S&S Cindy 291	#Connealy Power One	<b>MARB</b>
		Brockmere Zara 7048	+45
		#Sitz Traveler 8180	<b>REA</b>
		Bonnors Burgess of Fly Trav	+31
		#GDAR Equalizer 6148	<b>FAT</b>
		R&R MS Mach Rev 704	+012

CED	BEPD	WEPD	YEPD	MILK	\$M	\$W	\$F	\$G	\$B	\$C
+5	+1.8	+31	+57	+28	+52	+34	+67	+40	+107	+191

- Consigned by: Hill Angus, Paragould, AR
- A fancy young heifer backed by Power Tool, Power One, 8180 and other foundation type bulls.
- She should develop into a solid producing cow.
- DNA Tested and Sells Open.

## 45 HILLS LOOKIE 834

Birth Date: 11-19-2018 [OHF] Cow 19422873 Tattoo: 834

BUBS Lookie 601D 18549283	#Hoover Dam	#*SydGen CC&7	<b>CW</b>
ANGUSGS	+*WR Journey-1X74	#Erica of Ellston C124	+17
Hills Lori Leisure 617 18797836	Hills Lori Leisure 840	#+BC Lookout 7024	<b>MARB</b>
		BUBS Miss UAS	+96
		#B/R Future Direction 4268	<b>REA</b>
		2 Bar 5050 New Design 7831	+70
		#LT 598 Bando 9074	<b>FAT</b>
		Hills Lori Leisure 617	-019

CED	BEPD	WEPD	YEPD	MILK	\$M	\$W	\$F	\$G	\$B	\$C
+7	-.5	+35	+55	+22	+55	+39	+52	+73	+125	+217

- Consigned by: Hill Angus, Paragould, AR
- Take a look here!!
- This low birth female by Bubs Lookie 601D combines Hoover Dam, BC Lookout, Bando 9074 and WR Journey, the popular ABS AI Sire.
- Genomic Tested and sells open.



**46****HILLS LOOKIE 830** [MIF]

Birth Date: 10-14-2018

Cow 19422874

Tattoo: 830



		#*Hoover Dam		#*SydGen CC&7		<b>CW</b>	
BUBS Lookie 601D				#Erica of Ellston C124		+22	
18549283		BUBS Miss Lookie UAS		#+BC Lookout 7024		<b>MARB</b>	
ANGUS GS				BUBS Miss U 80Y		+92	
Hills Cindy 619		+*RB Tour Of Duty 177 [RDF]		#+*Werner War Party 2417		<b>REA</b>	
18830410		Hills Cindy 041		+*BA Lady 6807 305		+60	
				EAF 380 Traveler 860		<b>FAT</b>	
				Hills Cindy 843		-019	

CED	BEPD	WEPD	YEPD	MILK	\$M	\$W	\$F	\$G	\$B	\$C
+8	-1.3	+39	+72	+24	+52	+43	+69	+70	+139	+232

- Consigned by: Hill Angus, Paragould, AR
- Check out this low birth Lookie daughter out of a high volume, RB Tour of Duty 177 daughter combined with Hoover Dam and BC Lookout
- Genomic Tested and sells open.

**SAV Resource 1441** - Sire of Lot 47**47****AVF ELBA 2506**

Birth Date: 2-4-2016

Cow 18432760

Tattoo: 2506

		+Rito 707 of Ideal 3407 7075		#RR Rito 707		<b>CW</b>	
SAV Resource 1441 [RDF]				Ideal 3407 of 1418 076		+46	
#*17016597		*SAV Blackcap May 4136		#SAV 8180 Traveler 004 [RDF]		<b>MARB</b>	
				#+SAV May 2397		+06	
				#TC Gridiron 258		<b>REA</b>	
AVF Elba 2392		#*SAV Iron Mountain 8066		SAV Madame Pride 3249		+64	
+*17537700		#+SAV Elba 4436		#SAV 8180 Traveler 004 [RDF]		<b>FAT</b>	
				SAV Elba 1094		+018	

CED	BEPD	WEPD	YEPD	MILK	\$M	\$W	\$F	\$G	\$B	\$C
+0	+4.3	+64	+122	+14	+39	+40	+97	+25	+121	+196

- Consigned by: Speer Farms Marmaduke, AR
- Top 3% YW, Top 10% WW & \$F, Top 15% CW, Top 20% RE
- A young cow with a pedigree stacked with great breed leaders. She has Resource, the famous Blackcap May and the breed leading donor, SAV Elba 4436 who has over 200 offspring registered to her.
- Bred AI on 5-18-19 to SAV Rainfall 6816. Safe
- Lot 47A Sex: Bull DOB: 2-15-19 Sire: Musgrave 316 Stunner

**48****SF PROGRESS 1118**

Birth Date: 9-26-2018

Cow +19460361

Tattoo: 1118



		#+*Coleman Charlo 0256		#*OCC Paxton 730P		<b>CW</b>	
SAV Raintance 6848 [RDF]				#Bohi Abigale 6014		+39	
#*18578965		*SAV Blackcap May 4136		#SAV 8180 Traveler 004 [RDF]		<b>MARB</b>	
				#+SAV May 2397		+67	
				#*GAR Predestined		<b>REA</b>	
GAR Progress 1163		#+*GAR Progress		#GAR Objective 2345		+64	
+*17623206		+*GAR Objective N1900		#*SS Objective T510 OT26		<b>FAT</b>	
				+GAR 5050 New Design 366		-007	

CED	BEPD	WEPD	YEPD	MILK	\$M	\$W	\$F	\$G	\$B	\$C
+10	+1.5	+66	+119	+25	+58	+72	+79	+57	+136	+234

- Consigned by: Speer Farm, Marmaduke, AR
- Top 10% \$W, Top 15% WW, Top 20% CED, Top 25% \$G
- A heifer that definitely would not be for sale except we have three full siblings.
- By the powerful SAV Raintance and out of a great donor female by GAR Progress.
- Sells Open.

**Connealy Final Product** - Sire of Lot 50**49****B S MISS NEW DESIGN 78** [DDP]

Birth Date: 11-13-2013

Cow 17844190

Tattoo: 135

		#DHD Traveler 6807		#QAS Traveler 23-4		<b>CW</b>	
OCC Emblazon 854E				#Bemindful Maid DHD 0807		N/A	
#+12514348		Dixie Erica of CH 1019		#PBC 707 1M F0203		<b>MARB</b>	
				#Dixie Erica of CH 615		N/A	
				#Bon View New Design 1407 [RDF]		<b>REA</b>	
Hickory Hill Missy 831		#Sitz New Design 458N		Sitz Ellunas Elite 3308		N/A	
16213005		Hickory Hill Missy RA68		#JLB Exacto 416		<b>FAT</b>	
				Hickory Hill Missy LA18		N/A	

CED	BEPD	WEPD	YEPD	MILK	\$M	\$W	\$F	\$G	\$B	\$C
+9	+9	+41	+70	+20	+46	+37	N/A	N/A	N/A	N/A

- Consigned by: Charles "Buddy" Smith, Paragould, AR
- Top 20% CED
- A deep bodied broody beef cow!
- This Emblazon daughter has the best of both worlds as her dam combines 458N and JLB Exacto. You have growth and maternal both here.
- Lot 49A Sex: Bull DOB: 7-22-19 Sire: Bubs Southern Charm AR31

**50****B S MISS DOUBLE STACK 68**

Birth Date: 9-14-2013

Cow 17820673

Tattoo: 123

		*Connealy Product 568		#GAR Retail Product		<b>CW</b>	
Connealy Final Product				Pride Fine of Conanga 566		+42	
#*15848422		#Ebonista of Conanga 471		#Connealy Deep Canyon 454		<b>MARB</b>	
				Ebonisa of Conanga 5469		+20	
				#Connealy Reflection		<b>REA</b>	
BS Miss Heavy Stack 78		#MCATL Triple Stack		#MA Miss Emulous 685-251		+64	
16660543		Hickory Hill Missy RA68		#JLB Exacto 416		<b>FAT</b>	
				Hickory Hill Missy LA18		+015	

CED	BEPD	WEPD	YEPD	MILK	\$M	\$W	\$F	\$G	\$B	\$C
+2	+1.3	+65	+112	+27	+63	+68	+88	+32	+120	+219

- Consigned by: Charles "Buddy" Smith, Paragould, AR
- Top 10% WW & YW, Top 15% \$W, Top 20% RE, Top 25% CW & \$F
- Final Product daughters are some of the best females of the breed.
- This front pasture cow has the same granddam as Lot 50.
- Due anytime to BUBS Southern Charm AA31.

**51****B S SWEET CHARM 76**

Birth Date: 12-9-2018

Cow 19480832

Tattoo: 218

		#Silveiras Conversion 8064		#+BT Crossover 758N		<b>CW</b>	
BUBS Southern Charm AA31				+EXG Saras Dream 5609 R3		N/A	
#*17853196		*Hickory Hill Erica 009		#*Connealy Stimulus 8419		<b>MARB</b>	
				Hickory Hill Erica TA32		N/A	
				#Connealy Product 568		<b>REA</b>	
BS Fine Product 65		#*Connealy Final Product		#Ebonista of Conanga 471		N/A	
17528333		Miss Best Program 70		#HA Program 5652		<b>FAT</b>	
				BS Lady Design 68		N/A	

CED	BEPD	WEPD	YEPD	MILK	\$M	\$W	\$F	\$G	\$B	\$C
+5	+1.7	+62	+110	+27	+62	+61	N/A	N/A	N/A	N/A

- Consigned by: Charles "Buddy" Smith, Paragould, AR
- Top 25% WW & YW
- A fancy open heifer good enough for anyone! No doubt!
- She is sired by the hottest sire in the breed.
- Her dam is a Final Product daughter back to Program.

**52****BS FINE PRODUCT 65**

Birth Date: 9-12-2012

Cow 17528333

Tattoo: 212

\*Connealy Product 568  
 Connealy Final Product  
 #\*15848422 #Ebonista of Conanga 471

#GAR Retail Product  
 Pride Fine of Conanga 566  
 #Connealy Deep Canyon 454  
 Ebonisa of Conanga 5469  
 \*HA Future Direction 3540  
 +HA Blackcap Lady 2782  
 #\*Mytty In Focus [RDF]  
 BS Lady Jane 68

<b>CW</b>
+1.31
<b>MARB</b>
+1.42
<b>REA</b>
+1.44
<b>FAT</b>
+1.016

Miss Best Program 70  
 16931046 BS Lady Design 68

CED	BEPD	WEPD	YEPD	MILK	\$M	\$W	\$F	\$G	\$B	\$C
+5	+6	+54	+98	+25	+64	+55	+85	+40	+125	+226

- Consigned by: Charles "Buddy" Smith, Paragould, AR
- Top 25% YW
- A low birth female by the great maternal sire, Connealy Final Product.
- Note, her dam combines Program and Mytty In Focus.
- Bred 8-31-19 to BCA Emblazon D-30.

**Coleman Donna 6148** - Donor Dam of Lot 55**Deer Valley Growth Fund****53****REISIG BARBARAMERE 5025** [OSF]

Birth Date: 1-25-2015

Cow 18276887

Tattoo: 5025

\*Buford BlueStem 9974  
 Buford Unlimited Z529  
 +17448308 Majesty OS21 of 3S3 4465

#SAV Net Worth 4200  
 +LCC Erica NG724  
 #+Rito 353 of Rita 5H11 1656  
 +Ideal 4465 of 6807 4286  
 #Sitz Traveler 8180  
 +Boyd Forever Lady 8003  
 #\*Connealy Onward  
 Sitz Barbaramere Jet 187M

<b>CW</b>
+21
<b>MARB</b>
+45
<b>REA</b>
+23
<b>FAT</b>
+0.55

#SAV 8180 Traveler 004 [RDF]  
 Werner Barbaramere Jet 0020  
 16661331 #Sitz Barbaramere Jet 20T

CED	BEPD	WEPD	YEPD	MILK	\$M	\$W	\$F	\$G	\$B	\$C
+6	+1.4	+38	+70	+24	+63	+39	+56	+34	+90	+180

- Consigned by: Copeland Angus Ranch, Paragould, AR
- 5025 has been a great cow. She breeds, lies down and calves and raises a very nice, marketable calf! She has low birth bred in to her and carries that to her calves. She is a very nice designed female that has a great udder!
- She was AI Bred to the growing popular Deer Valley Growth Fund. The future is bright for this young female! She has 50K data on her.
- AI bred on 12/5 to Deer Valley Growth Fund and then pasture exposed to Copeland Vision 5010. Examined Safe

**54****REISIG MADAME PRIDE 473**

Birth Date: 2-19-2014

Cow +17989030

Tattoo: 473

#SAV Pioneer 7301  
 Buford Oklahoma X239  
 \*16701554 J Bar 7 Elba 7297

#\*SAV Final Answer 0035 [RDF]  
 SAV Blackbird 5297  
 #Baldridge Nebraska 901  
 J Bar 7 Julie Jan 5406  
 #Sitz Traveler 8180  
 +Boyd Forever Lady 8003  
 #+Leachman Right Time  
 #SAR Cruzs Pride 8597

<b>CW</b>
+3
<b>MARB</b>
+33
<b>REA</b>
+32
<b>FAT</b>
+0.30

#SAV 8180 Traveler 004 [RDF]  
 SAV Madame Pride 4305  
 +14725044 SAV Madame Pride 8264

CED	BEPD	WEPD	YEPD	MILK	\$M	\$W	\$F	\$G	\$B	\$C
+13	-1.2	+35	+54	+22	+53	+44	+34	+32	+66	+139

- Consigned by: Copeland Angus Ranch, Paragould, AR
- 473 is a 5 year old, low birth female in the prime of her life! She's a Buford Oklahoma daughter out of a full sister to the mother of SAV Iron Mountain! There's power in the blood!!
- She has been a really nice producer for us by leaving daughters in the herd! Check out her split off, end of March bull by the GENEX bull Buford Pathfinder C304!
- Her baby in the belly could be her best yet!!
- Bred AI on 5-2-19 to SAV Ten Speed 3022, then PE to Copeland Vision 5010 from 5-25-19 to 7-5-19. Too close to call but estimated safe AI.
- Lot 54A Sex: Bull DOB: 3-29-19 Sire: Buford Pathfinder C304

**55****ROCK RIDGE DONNA A87**

Birth Date: 9-7-2013

Cow +17758175

Tattoo: A87

#Connealy Reflection  
 Connealy Impression  
 #\*15543702 Pearl Pammy of Conanga 194

#Bon View New Design 878  
 Happy Grill of Conanga 6260  
 #Vermilion Dateline 7078  
 Pearl Jam of Conanga 6114  
 #\*N Bar Emulation EXT  
 Wulffs Erica Dianna C116  
 #DHD Traveler 6807  
 +Brooks Donna 319

<b>CW</b>
+1.24
<b>MARB</b>
+1.21
<b>REA</b>
+1.55
<b>FAT</b>
+1.024

#+Wulffs Ext 6106  
 Coleman Donna 6148  
 +\*15704363 +KMK Donna J311

CED	BEPD	WEPD	YEPD	MILK	\$M	\$W	\$F	\$G	\$B	\$C
+1.7	+1.2	+54	+90	+25	+67	+63	+73	+35	+108	+207

- Consigned by: Copeland Angus Ranch, Paragould, AR
- A87 is another female in the prime of her life! She is an Impression daughter out of the infamous maternal Coleman Donna family.
- This is a nice designed female that just gets it done raising a calf!
- Check out her split off HA Cowboy Up 5405 bull calf from the record selling \$350,000 bull from the 2016 Hinman Angus sale.
- AI bred on 5-2-19 to SAV Ten Speed 3022, then PE to Copeland Vision 5010 from 6-1 to 7-5-19 then PE to Copeland Emblazon F62 and Copeland Pathfinder 8316 from 7-6 to 9-15-19.
- Lot 55A Sex: Bull DOB: 4-4-19 Sire: HA Cowboy Up 5405

**56****COPELAND MADAME PRIDE E518**

Birth Date: 9-29-2017

Cow \*19141944

Tattoo: E518

\*Exar Emblazon 8268  
 Buford Emblazon 2898  
 +\*17505106 +\*BUF Eriskay 7352

#+\*Rito 6EM3 of 4L1 Emblazon  
 +EXAR Forever Lady 6432  
 #\*N Bar Emulation EXT  
 #+J Bar 7 Eriskay Q13-71K1  
 #\*Connealy Consensus 7229  
 +RAF Emblynette 239  
 #\*SAV Brand Name 9115  
 SAV Madame Pride 6301

<b>CW</b>
+53
<b>MARB</b>
+1.21
<b>REA</b>
+1.55
<b>FAT</b>
+1.002

+RAF Consensus 142  
 Blubaugh Madame Pride A518  
 18277668 Bar Madame Pride 368

CED	BEPD	WEPD	YEPD	MILK	\$M	\$W	\$F	\$G	\$B	\$C
+0	+3.6	+69	+118	+29	+56	+69	+104	+33	+137	+234

- Consigned by: Copeland Angus Ranch, Paragould, AR
- E518 is a bred heifer from the Madame Pride tribe made famous by Schaff Angus Valley in North Dakota! As you study her pedigree she reads to be a maternal, longevity oriented masterpiece Eriskay, Emblynette, and Madame Pride!
- We like to put bred heifers in here to benefit you as the buyer to have lots of years of success and profit! Our loss is your gain!
- AI Bred 5/2 to sexed heifer ZWT Summit and then pasture exposed 5/25 to 7/5/2019 to Copeland Emblazon F62.

**57****SFCC TRM BLACKCAP MAY 7068**

Birth Date: 3-15-2017

Cow 18753022

Tattoo: 7068

#+\*SAV Resource 1441 [RDF]  
 SAV Refuel 4864  
 +\*17923526 #+SAV Blackcap May 5530

+Rito 707 of Ideal 3407 7075  
 #\*SAV Blackcap May 4136  
 #BCC Bushwacker 41-93  
 SAV May 7238  
 #\*SAV Final Answer 0035 [RDF]  
 SAV Blackbird 5297  
 #SAV 8180 Traveler 004 [RDF]  
 +ALC Blackcap 50AT

<b>CW</b>
+1.36
<b>MARB</b>
+1.35
<b>REA</b>
+1.44
<b>FAT</b>
+1.027

CED	BEPD	WEPD	YEPD	MILK	\$M	\$W	\$F	\$G	\$B	\$C
+1.4	+1.2.9	+56	+94	+29	+62	+63	+74	+35	+109	+203

- Consigned by: Copeland Angus Ranch, Paragould, AR
- 7068 is another bred heifer up for the offering. She's out of a full brother to SAV Regard and out of the ever popular Blackcap May family! She comes from a great mother and even better cow family!
- She's a long bodied and growth type female. Should make someone a nice cow that's got a real nice pedigree! AI Bred 11/23 to SAV Ten Speed 3022 and then pasture exposed to Copeland Vision 5010.

58

# CBF ERROLINE 2889

Birth Date: 2-3-2019

Cow 19377818

Tattoo: 2889



CBF Angus Valley 4816 18604917		#*SAV Angus Valley 1867 [RDF] CBF Thomas Carol 4811		#*SAV Iron Mountain 8066 #+SAV May 2397		CW +16	
ANGUS CBF Erroline 2889 16708724		#*SS Objective T510 0T26 CBF Erroline 1288		#GAR Retail Product CBF Thomas Carol 3048 #SS Traveler 6807 T510 SS Miss Rita R011 7R8 #*GAR Predestined CBF Clearwater Erroline 128		MARB +68 REA +45 FAT +020	

CED	BEPD	WEPD	YEPD	MILK	\$M	\$W	\$F	\$G	\$B	\$C
+9	-9	+39	+66	+28	+43	+51	+34	+52	+87	+156

- Consigned by: Cross Brothers Farm, Paragould, AR
- This attractive young heifer is put together right - feminine, moderate and structurally correct!
- She is out of the productive Erroline cow family that came to us from the Clearwater cow herd in Missouri some years back.
- Her sire is an Angus Valley son we used as a clean-up bull that is now working as herd sire in the Bennie Luker herd.
- Her dam is a good milking cow that is still in our herd at 9 years of age.
- *Halter broke and gentle. Sells Open.*



Foster Elba C21 - Lot 61

59

# FOSTER ELBA 9004

Birth Date: 1-6-2019

Cow 19483693

Tattoo: 9004

LD Capitalist 316 [RDF] +*17666102		#*Connealy Capitalist 028 [RDF] LD Dixie Erica 2053		#*SAV Final Answer 0035 [RDF] Prides Pita of Conanga 8821 #CA Future Direction 5321 LD Dixie Erica Oar 0853 #*SAV Harvester 0338 #+SAV Blackcap May 5530 +Rito 707 of Ideal 3407 7075 SAV Elba 1094		S CW +53 MARB +57 REA +58 FAT +043		D CW +41 MARB +20 REA +31 FAT +031	
---------------------------------------	--	--	--	--	--	---	--	---	--

CED	BEPD	WEPD	YEPD	MILK	\$M	\$W	\$F	\$G	\$B	\$C
+13	-8	+69	+118	+30	+56	+81	+92	+46	+138	
I+3	I+3.8	I+61	I+102	I+26	+65	+60	+79	+26	+105	

- Consigned by: Foster Angus Ranch, Paragould, AR
- This power house January heifer is one you will want to look up on sale day.
- The Elbas never miss at our place and you can see what I am talking about with this one!
- Sired by LD Capitalist 316 back to SAV Cutting Edge with Elba 1094. She has potential to mother her way to the "Donor Pen". Everyone says sell one that when you shut the trailer gate it hurts a little. Well, it will hurt tremendously with this one!
- *Sells Open.*



Foster Elba 9004 - Lot 59

60

# FOSTER ELBA 8024

Birth Date: 10-20-2018

Cow 19482896

Tattoo: 8024

SAV Cut Above 6271 *18579035		+*SAV Cutting Edge 4857 #SAV Emblynette 8259		#*SAV Harvester 0338 #+SAV Blackcap May 5530 #+SAV 004 Density 4336 +SAV Emblynette 3325 #+*GAR Grid Maker SAV Abigale 0451 +Rito 707 of Ideal 3407 7075 SAV Elba 5383		CW I+48 MARB I+.38 REA I+.62 FAT I+.029	
---------------------------------	--	---	--	---	--	--	--

CED	BEPD	WEPD	YEPD	MILK	\$M	\$W	\$F	\$G	\$B	\$C
I+4	I+3.5	I+66	I+111	I+24	+63	+58	+99	+39	+138	+242

- Consigned by: Foster Angus Ranch, Paragould, AR
- Top 15% WW & \$F, Top 20% YW, Top 25% CW
- This Elba heifer sired by SAV Cut Above is sure one you do not want to miss on sale day.
- An absolute stunning heifer with power and that SAV look.
- *Sells Open.*

61

# FOSTER ELBA C21

Birth Date: 1-5-2015

Cow 18184695

Tattoo: C21

SAV Bismarck 5682 [RDF] #+15109865		#+*GAR Grid Maker SAV Abigale 0451		#GDAR Traveler 044 GAR Precision 2536 #Schoenes Fix It 826 SAV Abigale 6062 #RR Rito 707 Ideal 3407 of 1418 076 #SAV 8180 Traveler 004 [RDF] SAV Elba 1094		CW +36 MARB +15 REA +51 FAT +028	
---------------------------------------	--	---------------------------------------	--	---	--	---	--

CED	BEPD	WEPD	YEPD	MILK	\$M	\$W	\$F	\$G	\$B	\$C
+6	+1.5	+60	+98	+19	+72	+61	+87	+26	+113	+219

- Consigned by: Foster Angus Ranch, Paragould, AR
- Top 15% WW & \$M, Top 20% \$F, Top 25% YW
- This beautiful female sired by SAV Bismarck 5182 is one of my favorite young females on the farm.
- She stems back to SAV Elba 3596, our pick of the 2014 SAV Sale and one of our lead donors.
- Don't miss out on this beautiful front pasture kind!
- *Pasture exposed to Foster Blackhawk C365 from 2-3-19 to 4-5-19. Safe.*

62

# TAR CNSLR DENE BEAUTY 407

Birth Date: 9-10-2014

Cow 17931746

Tattoo: 407

Connealy Counselor #+*16761497		#*Connealy Mentor 7374 Jaze of Conanga 234		#GAR Retail Product #Executa of Conanga 939 #Connealy Lead On Jaycee of Conanga 233 #*Connealy Impression #MAF Lady Objective 715 #WAR Alliance 9126 6006 TAR Roschelle Maud Eliz 416		CW +39 MARB +28 REA +74 FAT +001	
-----------------------------------	--	---	--	--	--	---	--

CED	BEPD	WEPD	YEPD	MILK	\$M	\$W	\$F	\$G	\$B	\$C
+8	+9	+54	+98	+30	+47	+60	+81	+39	+120	+203

- Consigned by: Foster Angus Ranch, Paragould, AR
- Top 10% RE, Top 25% YW & \$W
- A product of the Pam and Lester Taylor herd.
- A really solid Connealy Counselor daughter out of a great producing dam.
- *Lot 62A Sex: Bull DOB: 9-29-19 Sire: MGR Treasurer*

63

# S A T EVONA ERICA 6219

Birth Date: 4-8-2016

Cow 1866642

Tattoo: 6219

SydGen Stacked Deck 1605 *17116073		+*SydGen Dealer 9883 *SydGen Forever Lady 7710		SydGen Sure Bet +SydGen Forever Lady 4413 +SydGen Rocky Road 2060 SydGen Forever Lady 4087 *SCR Promise 4042 +SydGen Forever Lady 4413 SydGen Turbo 6684 ESF Evona Erica V159		CW +49 MARB +1.06 REA +52 FAT -.005	
---------------------------------------	--	---	--	--	--	--	--

CED	BEPD	WEPD	YEPD	MILK	\$M	\$W	\$F	\$G	\$B	\$C
+1	+1.8	+66	+115	+33	+40	+74	+89	+74	+163	+251

- Consigned by: Satterfield Angus, Norfolk, AR
- Straight SydGen bred outcross to most popular pedigree.
- Bred to Declaration and this calf could pay the entire ticket.
- *This Declaration calf could pay the entire ticket.*



**64****S A T BELLE 7214**

Birth Date: 3-30-2017

Cow 18857570

Tattoo: 7214

+\*SydGen Dealer 9883  
 SydGen Stacked Deck 1605  
 \*17116073 \*SydGen Forever Lady 7710

#+\*GAR Prophet [RDF]  
 SA Belle 1230  
 17392583 +\*GAR New Day 1730

SydGen Sure Bet  
 +SydGen Forever Lady 4413  
 +SydGen Rocky Road 2060  
 SydGen Forever Lady 4087  
 #CRA Bextor 872 5205 608  
 +GAR Objective 1885  
 #\*B/R New Day 454  
 GAR 5050 New Design 1818

CW
N/A
MARB
N/A
REA
N/A
FAT
N/A

CED	BEPD	WEPD	YEPD	MILK	\$M	\$W	\$F	\$G	\$B	\$C
+3	+2.1	+54	+102	+30	+47	+54	N/A	N/A	N/A	N/A

- Consigned by: Satterfield Angus, Norfolk, AR
- Good Stacked Deck daughter out of my best Prophet daughter.
- She will make a top end cow for someone with her whole future ahead of her. She will have genomics ran before sale date.
- Lot 64A Sex: Bull DOB: 9-4-19 Sire: LD Cap 316

**65****SYDGEN DI 2426**

Birth Date: 9-5-2012

Cow 17402589

Tattoo: 2426

#SydGen Contact  
 SydGen Diamond 8499  
 +16094867 +GAR 616 Rito 2472

**HOSOK**  
 #\*SydGen Trust 6228  
 SydGen Di 9799  
 +16650429 Green Garden Di E283 S1

#+SAF Connection  
 +SAF Forever Lady 0020  
 #Rito 616 of 4B20 6807  
 +GAR Precision 709  
 \*SCR Promise 4042  
 +SydGen Forever Lady 4413  
 #B/R Destination 727-928  
 Green Garden Di 8280 S2

CW
+58
MARB
+65
REA
+63
FAT
-.015

CED	BEPD	WEPD	YEPD	MILK	\$M	\$W	\$F	\$G	\$B	\$C
+2	+1.7	+59	+100	+27	+47	+61	+120	+57	+176	+275

- Consigned by: Satterfield Angus, Norfolk, AR
- Top 1% \$F, Top 2% \$B, Top 3% CW, Top 20% WW & RE, Top 25% YW & \$W
- She was our pick of SydGen heifers and she hasn't disappointed.
- She has raised several top bulls and I have kept two replacement heifers.
- She has one of the best bulls in the lot right now that I am strongly considering keeping for a herd bull!
- Lot 67A Sex: Bull DOB: 9-6-19 Sire: LD Cap 316



SAV Ten Speed 3022 - Sire of Lot 66

**66****S A T MS TEN SPEED 6103**

Birth Date: 2-25-2016

Cow +18615419

Tattoo: 6103

#\*AAR Ten X 7008 SA  
 SAV Ten Speed 3022  
 \*17633563 #SAV Madame Pride 1134

#\*SS Objective T510 0T26  
 GAR Objective 1370  
 \*16734765 +\*GAR Predestined N508

#\*Mytty In Focus [RDF]  
 #AAR Lady Kelton 5551  
 #+SAV Bismarck 5682 [RDF]  
 SAV Madame Pride 9100  
 #SS Traveler 6807 T510  
 SS Miss Rita R011 7R8  
 #\*GAR Predestined  
 +GAR Future Direction 1804

CW
I+.36
MARB
I+.85
REA
I+.59
FAT
I-.012

CED	BEPD	WEPD	YEPD	MILK	\$M	\$W	\$F	\$G	\$B	\$C
+8	+2.2	+65	+116	+20	+51	+56	+86	+65	+151	+247

- Consigned by: Satterfield Angus, Norfolk, AR
- Top 4% \$B, Top 5% \$G, Top 10% WW, YW & MARB
- Top 15% \$F, Top 20% RE, Top 25% CW
- Straight out of our ET Program. She is a blend of the SAV program and has SAV power plus phenotype with GAR carcass traits.
- This young cow is hard to let go but we want to bring a set that can go and work anywhere in the U.S.
- Lot 66A Sex: Bull DOB: 9-10-19 Sire: SAV Raindance

**67****MAHAN TRAVELER C2**

Birth Date: 10-4-2015

Cow 18393603

Tattoo: C2

#+\*Werner War Party 2417  
 RB Tour Of Duty 177 [RDF]  
 +\*16984170 +\*BA Lady 6807 305

**ISOK**  
 Harris Dash 003  
 Hills Miss Play 379  
 17768103 Hills Miss Play 619

#\*Connealy Onward  
 +BAAR USA Lady Jaye 489  
 #Vermilion Dateline 7078  
 +GD Lady Hi Flyer 302  
 #\*Sitz Dash 10277  
 Harris Mary 773  
 HAF Traveler 8180 500  
 MAF Miss Play 900

CW
+42
MARB
+36
REA
+64
FAT
-.034

CED	BEPD	WEPD	YEPD	MILK	\$M	\$W	\$F	\$G	\$B	\$C
+4	+2.8	+58	+102	+29	+54	+60	+78	+45	+123	+214

- Consigned by: Mahan Angus, Center Ridge, AR
- A deep bodied Tour of Duty daughter from the Tommy Hill herd.
- Her dam combines Sitz Dash and 8180. This female has an excellent udder and will make a good addition to your program.
- Bred to Mahan 39A S Charm E21 and due 10-5-19. Safe.

**68****MAHAN BASIN MAX C5**

Birth Date: 10-23-2015

Cow 18386319

Tattoo: C5

+Rito 707 of Ideal 3407 7075  
 SAV Recharge 3436  
 +\*17633838 #SAV Blackcap May 4136

**GGPLD**  
 BUBS Ralphy P110  
 BUBS Good N Plenty 582  
 15660963 BUBS Good N Plenty N8

#RR Rito 707  
 Ideal 3407 of 1418 076  
 #SAV 8180 Traveler 004 [RDF]  
 #+SAV May 2397  
 +Bubs Don Carlo J76  
 Bubs Florio K32  
 #Basin Max 602C  
 +BUBS Good N Plenty L18

CW
+17
MARB
-.24
REA
+14
FAT
+0.026

CED	BEPD	WEPD	YEPD	MILK	\$M	\$W	\$F	\$G	\$B	\$C
+6	+1.5	+45	+79	+10	+56	+28	+45	+3	+48	+118

- Consigned by: Mahan Angus, Center Ridge, AR
- The sire of C5 is SAV Recharge, the powerful Rito 707 son, out of the great SAV Blackcap May 4136.
- The dam of this female is a great producer from the BUBS program.
- Pasture exposed from 4-9-19 to 6-25-19 to Mahan 39A S Charm E21 and due 11-20-19. Safe.

**69****COPELAND EMBLYNETTE 4019**

Birth Date: 5-1-2014

Cow 17832891

Tattoo: 4019

#+\*Werner War Party 2417  
 Werner War Party 1472  
 +\*17236833 GCC Dixie Erica 712S

#\*SAV Iron Mountain 8066  
 Werner Emblynette 1190  
 +\*17276187 +Champion Hill EMBLYNETTE6535

#\*Connealy Onward  
 +BAAR USA Lady Jaye 489  
 #\*OCC Missing Link 830M  
 +OCC Dixie Erica 620N  
 #TC Gridiron 258  
 SAV Madame Pride 3249  
 #SAV 8180 Traveler 004 [RDF]  
 +Champion Hill EMBLYNETTE4299

CW
+46
MARB
+07
REA
+53
FAT
+0.036

CED	BEPD	WEPD	YEPD	MILK	\$M	\$W	\$F	\$G	\$B	\$C
+8	+0	+66	+119	+23	+61	+69	+97	+22	+119	+215

- Consigned by: Mahan Angus, Center Ridge, AR
- Top 5% YW, Top 10% WW, \$W & \$F, Top 15% CW, Top 20% BW
- A growthy, high volume Werner War Party daughter out of the great Emblynette 1190. 1190 is a powerful donor in the Copeland herd.
- Pasture exposed from 5-1-19 to 10-1-19 to Mahan 39 S Charm E21. Safe.

**70****MAHANS DIRECTIVE F23**

Birth Date: 11-8-2018

Cow \*19416820

Tattoo: F23

#+\*GAR Progress  
 GAR Momentum [RDF]  
 \*17354145 +GAR Big Eye 1770

**ANGUS**  
 #MCATL Triple Stack  
 TA Miss Directive W17  
 16647473 TA Miss Hi Directive S34

#\*GAR Predestined  
 \*GAR Objective 2345  
 #\*ALC Big Eye D09N  
 GAR Objective 3387  
 #Connealy Reflection  
 #MA Miss Emulous 685-251  
 #SAF Directive  
 TA 4144 Lass C26

CW
+54
MARB
+78
REA
+76
FAT
-.006

CED	BEPD	WEPD	YEPD	MILK	\$M	\$W	\$F	\$G	\$B	\$C
+9	+1.7	+75	+129	+26	+63	+79	+92	+64	+156	+265

- Consigned by: Mahan Angus, Center Ridge, AR
- Top 4% WW & YW, Top 5% \$W, Top 15% CW & \$G, Top 20% RE, Top 25% MARB & \$F
- Take a look at this daughter of the popular GAR Momentum and out of a Triple Stack dam.
- Low birth with lots of growth here! She has a \$C of 270.
- A really special heifer with the right genetics.
- Sells Open.



**VAR Blackcap 3088** - Donor Dam of Lot 71

**71 MAHAN RITA GENERATION E12**  
 Birth Date: 10-3-2017 Cow \*18913793 Tattoo: E12

VAR Generation 2100 *17171587	*Connealy Consensus 7229 +*Sandpoint Blackbird 8809	*Connealy Consensus Blue Lilly of Conanga 16 *Connealy Onward +Riverbend Blackbird 4301 #Sitz Upward 307R #+EXAR Barbara 2020 *SS Objective T510 OT26 +*Rita 2811 of 2536 BVND 878	<b>CW</b> +32 <b>MARB</b> +.65 <b>REA</b> +.82 <b>FAT</b> -.027
----------------------------------	--	---	--

CED	BEPD	WEPD	YEPD	MILK	\$M	\$W	\$F	\$G	\$B	\$C
+9	+1.1	+58	+107	+22	+59	+58	+76	+60	+136	+235

- Consigned by: Mahan Angus, Center Ridge, AR
- Top 15% RE, Top 20% \$G, Top 25% CED & YW
- Here is your front pasture heifer!
- This is your opportunity to purchase a female with a royal pedigree. Flush sisters to the dam of this female have been donors at BoBo, Hillhouse, Pollard, Friendship and Express. The granddam of this female, W944, was selected by Vintage and Express as the \$85,000, top seller of a past Riverbend Sale. The dam of this heifer, 3088, was the top selling female at the past Southeast Angus Classic Sale.
- Safe in calf to Spring Cove Reno 40E with a heifer calf due 10-31-19.
- You have a real bonus in this heifer calf.

**72 MAHAN LADY DEW C1** [DDF]  
 Birth Date: 10-3-2015 Cow 18393600 Tattoo: C1

Quaker Hill Rampage 0A36 [RDF] +*16925771	#MCC Daybreak +*QHF Blackcap 6E2 of 4V16 4355	+*Boyd New Day 8005 #MCC Miss Focus 134 Ideal 4355 of OT26 2440 *QHF Blackcap 4V16 of 1H8 Ingrams Rito 025 N9 #MF 320 Lady Zion 162 Ingrams Rito 025 N9 MF 306L Lady Dew 99 086	<b>CW</b> +36 <b>MARB</b> +.38 <b>REA</b> +1.18 <b>FAT</b> -.035
--	--	--	---

CED	BEPD	WEPD	YEPD	MILK	\$M	\$W	\$F	\$G	\$B	\$C
+8	+1.1	+57	+92	+17	+62	+56	+79	+53	+132	+233

- Consigned by: Mahan Angus, Center Ridge, AR
- Top 1% RE, Top 20% \$G, Top 25% WW & \$B
- Don't miss this high volume, attractive daughter of Rampage.
- Her dam is a proven cow that came from the McCool herd in Alabama.
- Pasture exposed from 4-9 to 6-25-19 to Mahan 39A S Charm C21 and due 2-25-20. Safe.

**73 CHECKERHILL MISSY 433**  
 Birth Date: 10-8-2014 Cow 18271042 Tattoo: 433

Connealy Final Product *15848422	*Connealy Product 568 #Ebonista of Conanga 471	#GAR Retail Product Pride Fine of Conanga 566 #Connealy Deep Canyon 454 Ebonista of Conanga 5469 #Connealy Reflection #MA Miss Emulous 685-251 #JLB Exacto 416 Hickory Hill Missy LA18	<b>CW</b> +49 <b>MARB</b> +.11 <b>REA</b> +.65 <b>FAT</b> +.001
-------------------------------------	---	---	--

CED	BEPD	WEPD	YEPD	MILK	\$M	\$W	\$F	\$G	\$B	\$C
-3	+2.9	+65	+114	+25	+57	+65	+91	+29	+120	+213

- Consigned by: Checkerhill Angus, West Plains, MO
- Top 10% WW, YW & CW, Top 15% RE & \$W, Top 20% \$F
- A really nice Final Product that is sure to please anyone.
- Her dam by Triple Stack is out of the great Hickory Hill Missy family of cattle.
- Bred AI on 5-9-19 to BUBS Southern Charm.
- Lot 73A Sex: Bull DOB: 2-2-19 Sire: D L Dually



**BUBS Southern Charm AA31**

**74 CHECKERHILL LASS 333**  
 Birth Date: 11-8-2013 Cow 17833918 Tattoo: 333

Buford BlueStem 9974 *16543415	#SAV Net Worth 4200 +LCC Erica NG724	#SAV 8180 Traveler 004 [RDF] +SAV May 2410 #CA Future Direction 5321 LCC Erica LG075 *Connealy Onward Becky Lee of Conanga 74 #+HA Image Maker 0415 MFF Lass 95	<b>CW</b> +41 <b>MARB</b> +.52 <b>REA</b> +.76 <b>FAT</b> +.057
-----------------------------------	---	--	--

CED	BEPD	WEPD	YEPD	MILK	\$M	\$W	\$F	\$G	\$B	\$C
+7	+2.6	+58	+92	+34	+73	+75	+69	+45	+114	+221

- Consigned by: Checkerhill Angus, West Plains, MO
- Top 10% RE & \$W, Top 20% \$M, Top 25% WW & CW
- This moderate framed heavy milking daughter of Buford BlueStem has been a big time producer for us.
- Her last Epic bull calf was chosen at weaning to be one of the many new herd bulls at Cooper Farms in Summersville, MO.
- Lot 74A Sex: Heifer DOB: 9-11-19 Sire: SydGen Enhance

**75 CHECKERHILL ENCHANTRESS 608**  
 Birth Date: 3-28-2016 Cow 19305418 Tattoo: 608

Stevenson Rockmount RX933 +*16647203	#MCC Daybreak *FSHK Pride 180	+*Boyd New Day 8005 #MCC Miss Focus 134 #Sitz Alliance 6595 +FSHK Pride 725 *Connealy Product 568 #Ebonista of Conanga 471 #Boyd On Target 1083 KM Enchantress 64	<b>CW</b> +33 <b>MARB</b> +.32 <b>REA</b> +.61 <b>FAT</b> +.028
---	----------------------------------	--	--

CED	BEPD	WEPD	YEPD	MILK	\$M	\$W	\$F	\$G	\$B	\$C
+8	+1.2	+61	+103	+22	+53	+66	+88	+36	+124	+214

- Consigned by: Checkerhill Angus, West Plains, MO
- Top 15% WW & \$W, Top 20% YW & RE, Top 25% BW & \$F
- A great young daughter of the good ABS AI sire, Stevenson Rockmount.
- She is a super deep, power house of a cow!
- Lot 75A Sex: Bull DOB: 9-13-19 Sire: BUB Southern Charm AA31

**76 CHECKERHILL SUZA 621** [CAF]  
 Birth Date: 9-1-2016 Cow 19305385 Tattoo: 621

SAV Brilliance 8077 *16107774	#+SAV Bismarck 5682 [RDF] SAV Blackcap May 5270	#+*GAR Grid Maker SAV Abigale 0451 #SAV 8180 Traveler 004 [RDF] #+SAV May 2420 #+SAF 598 Bando 5175 +Boyd Forever Lady 7095 C&M Dally New Trend 30 Christophers Miss Lass 3256	<b>CW</b> +48 <b>MARB</b> +.27 <b>REA</b> +.49 <b>FAT</b> +.022
----------------------------------	--	---	--

CED	BEPD	WEPD	YEPD	MILK	\$M	\$W	\$F	\$G	\$B	\$C
+3	+1.4	+56	+106	+17	+59	+51	+103	+33	+135	+234

- Consigned by: Checkerhill Angus, West Plains, MO
- Top 10% \$F, Top 25% CW
- Here is one of the best two year olds ever calved at Checkerhill!!!
- This is a tremendous maternal female that is a heavy milker with a near perfect udder.
- Lot 76A Sex: Bull DOB: 09/08/19 Sire: BUBS Southern Charm



**Baldridge Command**

**77 CHECKERHILL FOREVER LADY 444** [DDP]  
 Birth Date: 11-13-2014 Cow 18271135 Tattoo: 444

PVF Insight 0129 +*16805884	#*SAV Brilliance 8077	#+SAV Bismarck 5682 [RDF]	<b>CW</b>
	+*PVF Missie 790	SAV Blackcap May 5270	<b>I+50</b>
Checkerhill Forever Lady 227 17670668	*Silveiras Conversion 8064	#+*PVF New Horizon 001	<b>MARB</b>
	Checkerhill Forever Lady W17	PVF Miss Raptor 024	<b>I+.26</b>
		#+BT Crossover 758N	<b>REA</b>
		+EXG Saras Dream S609 R3	<b>I+1.06</b>
		#SAV Net Worth 4200	<b>FAT</b>
		Forever Lady Twin 1	<b>I+.007</b>

CED	BEPD	WEPD	YEPD	MILK	\$M	\$W	\$F	\$G	\$B	\$C
+2	+2.8	+60	+106	+24	+42	+55	+110	+41	+151	+238

- Consigned by: Checkerhill Angus, West Plains, MO
- Top 1% RE, Top 3% \$F, Top 10% CW & \$B, Top 15% WW & YW
- A daughter of the ever popular Genex AI sire, PVF Insight.
- 444's dam is a half-sister to BUBS Southern Charm!!
- **Bred AI on 1-14-19 to Baldridge Command and safe in calf.**

**78 HICKORY HILL MAID 534** [DDP]  
 Birth Date: 10-23-2015 Cow 19131653 Tattoo: 534

PA Power Tool 9108 #*16381311	#*GAR Predestined	#B/R New Design 036	<b>CW</b>
	*Shamrocks Beebe Queen 3095	#+GAR Ext 4206	<b>+41</b>
Hickory Hill Maid 213 17943346	*Hoover Dam	#Bon View New Design 208	<b>MARB</b>
	Hickory Hill Maid 835	#Shamrock's Beebe Queen 1823	<b>+77</b>
		#*SydGen CC&7	<b>REA</b>
		#Erica of Ellston C124	<b>+99</b>
		#Nichols Extra K205	<b>FAT</b>
		Hickory Hill Audra	<b>-020</b>

CED	BEPD	WEPD	YEPD	MILK	\$M	\$W	\$F	\$G	\$B	\$C
+12	-5	+55	+103	+34	+74	+74	+89	+68	+157	+278

- Consigned by: Hickory Hill Angus, West Plains, MO
- Top 5% \$W, Top 10% CED, \$G & \$B, Top 15% BW, Marb & \$M, Top 20% YW & \$F
- A Moderate sized cow that is a powerhouse producer weaning two bull calves at over 800 lbs.
- She is a 3/4 sister to the great maternal ABS sire, Raven Powerball that is sired by Power Tool and out of a Hoover Dam mother.
- She has a very nice set of balanced EPDs.
- **Sells due to calve on 10-31-19 to the highly proven powerhouse ABS sire, LD Emblazon 999. He did very well on the Angus Sire Alliance data.**

**79 HICKORY HILL SUSAN 526**  
 Birth Date: 9-26-2015 Cow \*19131650 Tattoo: 526

RB Tour Of Duty 177 [RDF] +*16984170	#*Werner War Party 2417	#*Connealy Onward	<b>CW</b>
	+*BA Lady 6807 305	+BAAR USA Lady Jaye 489	<b>+49</b>
Hickory Hill Susan 226 17943337	*Connealy Final Product	#Vermilion Dateline 7078	<b>MARB</b>
	Hickory Hill Susan SA16	+GD Lady Hi Flyer 302	<b>+98</b>
		*Connealy Product 568	<b>REA</b>
		#Ebonista of Conanga 471	<b>+78</b>
		#Nichols Extra K205	<b>FAT</b>
		Hickory Hill Susan NA37	<b>-015</b>

CED	BEPD	WEPD	YEPD	MILK	\$M	\$W	\$F	\$G	\$B	\$C
+5	+1.0	+58	+111	+33	+61	+67	+86	+75	+160	+269

- Consigned by: Hickory Hill Angus, West Plains, MO
- Top 3% \$G, Top 5% \$B, Top 10% YW, CW & MARB, Top 15% \$W, Top 20% BW
- This young Tour of Duty daughter is absolutely beautiful and nearly perfect in her design. Very docile and slick haired with a beautiful udder.
- We are saving her nice Southern Charm daughter as her replacement and her DNA profile came back very strong. No wonder this cow is nice since she has Final Product, Extra K205 and Lead On on her maternal side.
- **526 sells due to calve 11-7-19 to the popular Hoover Dam son, SS Niagara Z29.**

**80 HICKORY HILL ERICA 420**  
 Birth Date: 9-18-2014 Cow \*18803572 Tattoo: 420

Mohren Long Haul 502 #*17286792	#+Mohren Long Distance 1639	#*Mohren Brushpopper 295	<b>CW</b>
	Mohren Zara 390	+Baldridge Blackbird M565	<b>+32</b>
Hickory Hill Erica 219 *17537349	*Connealy Final Product	#Sitz Upward 307R	<b>MARB</b>
	*Hickory Hill Erica 009	#Mohren Zara 146	<b>+94</b>
		*Connealy Product 568	<b>REA</b>
		#Ebonista of Conanga 471	<b>+79</b>
		*Connealy Stimulus 8419	<b>FAT</b>
		Hickory Hill Erica TA32	<b>+016</b>

CED	BEPD	WEPD	YEPD	MILK	\$M	\$W	\$F	\$G	\$B	\$C
+6	+5	+55	+97	+37	+73	+76	+73	+70	+143	+258

- Consigned by: Hickory Hill Angus, West Plains, MO
- Top 2% \$W, Top 4% \$M, Top 10% RE & \$ G, Top 15% MARB, Top 25% WW
- An Erica female sired by the ABS bull, Mohren Long Haul. Her Final Product dam is a donor for us and is out of the dam of Southern Charm.
- This moderate framed cow milks very well with a nice udder and raises a very growthy calf. Her 2 heifers and a bull had an average WW of 729 lbs.
- **Lot 80A Sex: Heifer DOB: 9-13-19 Sire: Musgrave Big Sky**

**81 CSC RACHEL C61**  
 Birth Date: 9-24-2015 Cow 18351263 Tattoo: C61

CSC Image Maker Y34 17242830	#+HA Image Maker 0415	#Hero 6267 of RR 2418	<b>CW</b>
	#*SydGen Drusilla 8836	HA Rito Blackcap 9038	<b>+42</b>
CSC Rachel Z104 17575195	*Connealy Final Product	#*SydGen CC&7	<b>MARB</b>
	+CSC Rachel S3	+DD Pride 211 5175	<b>+55</b>
		*Connealy Product 568	<b>REA</b>
		#Ebonista of Conanga 471	<b>+20</b>
		#*Twin Valley Precision E161 [RDF]	<b>FAT</b>
		TAR Rachel 2594	<b>+044</b>

CED	BEPD	WEPD	YEPD	MILK	\$M	\$W	\$F	\$G	\$B	\$C
+0	+2.4	+52	+94	+33	+63	+60	+84	+40	+124	+224

- Consigned by: Hickory Hill Angus, West Plains, MO
- Top 20% CW, Top 25% \$W
- This cow was our pick at weaning age from a C/S Sale, Pomona, MO.
- Her pedigree contains the great cow maker sires - Image Maker, CC&7, Final Product plus she is from one of their favorite cow families, the Rachels.
- We are retaining her outstanding Manning heifer calf as her replacement. She had a WW Ratio of 109.
- **Lot 81A Sex: Heifer DOB: 9-15-19 Sire: BAR R Jet Black 5063**

**82 HICKORY HILL BLACKBIRD 428**  
 Birth Date: 10-4-2014 Cow 18780437 Tattoo: 428

VAR Reserve 1111 #*16916944	#B/R New Day 454	#+Boyd New Day 8005	<b>CW</b>
	+*Sandpoint Blackbird 8809	B/R Ruby 1224	<b>+30</b>
Hickory Hill Blackbird 017 17537351	#HA Program 5652	#*Connealy Onward	<b>MARB</b>
	Hickory Hill Blackbird 111	+Riverbend Blackbird 4301	<b>+45</b>
		*HA Future Direction 3540	<b>REA</b>
		+HA Blackcap Lady 2782	<b>+97</b>
		Hickory Hill Designer Gene	<b>FAT</b>
		Hickory Hill Blackbird 725	<b>-001</b>

CED	BEPD	WEPD	YEPD	MILK	\$M	\$W	\$F	\$G	\$B	\$C
+11	-3	+51	+90	+25	+53	+57	+75	+50	+125	+215

- Consigned by: Hickory Hill Angus, West Plains, Mo
- Top 2% RE, Top 10% CED, Top 15% BW
- A powerful, easy fleshing, nice uddered, slick haired young cow with the typical Reserve great disposition.
- Her good HA Program dam is working well in the Scott Lanham herd at Bunker, MO.
- Her outstanding granddam was sired by a bull that we raised and held the record price for this sale for at least 12 years.
- 428 sells due to the deceased and rare EPD superstar, the ABS sire, DL Dually. His calves are noted for high growth in a fancy package. She sells due on 10-15-19.



**VAR Reserve 1111 - Sire of Lot 82**





**Basin Payweight 1682** - Sire of Lot 83



**KCF Bennett Southside** - Sire of Lot 86

**83 HICKORY HILL SUSAN 607**  
 Birth Date: 9-5-2016 Cow \*19479950 Tattoo: 607

#+*Basin Payweight 006S		#Vermilion Payweight J847		<b>CW</b>
Basin Payweight 1682		+Basin Lucy 3829		+49
+*17038724 21AR 0 Lass 7017		#HARB Pendleton 765 JH		<b>MARB</b>
		21AR 0 Lass F24A		+68
<b>ANGUS</b>		*Connealy Product 568		<b>REA</b>
#*Connealy Final Product		#Ebonista of Conanga 471		+27
Hickory Hill Susan 226		#Nichols Extra K205		<b>FAT</b>
17943337 Hickory Hill Susan SA16		Hickory Hill Susan NA37		+070

CED	BEPD	WEPD	YEPD	MILK	\$M	\$W	\$F	\$G	\$B	\$C
+3	+1.9	+66	+116	+24	+79	+73	+78	+45	+122	+237

- Consigned by: Hickory Hill Angus, West Plains, Mo
- Top 15% WW, YW, \$M & \$W
- An own daughter of the very popular Basin Payweight 1682. Her dam has Final Product, Extra K205 and Lead On in her maternal sire stack.
- This long bodied, nice uddered, very correct female is only 3 years old. We have to make room for some tremendous young heifers or she would not sell.
- 607 sells due 10-30-19 to the popular ABS flush sire, GAR Inertia. He has a tremendous combination of growth and carcass traits as well as power and eye appeal. Don't miss out of an early Inertia calf.

**84 AF QUEEN ELSA 619**  
 Birth Date: 2-22-2019 Cow 19489352 Tattoo: 619

#*Connealy Capitalist 028 [RDF]		#*SAV Final Answer 0035 [RDF]		<b>CW</b>
EATHINGTON SUB-ZERO		Prides Pita of Conanga 8821		+52
*17379591 KP Miss Proven Queen 21		#*BC Matrix 4132		<b>MARB</b>
		PVF All Proven Queen 503		+03
<b>ANGUS</b>		#*SAV Brilliance 8077		<b>REA</b>
#*PVF Insight 0129		#*PVF Missie 790		+83
AF Jestress Gal 517		#+R/M Ironstone 4047		<b>FAT</b>
18828849 Jestress Gal 2G35 of GAR		Lay's Jestress Gal 6409		+016

CED	BEPD	WEPD	YEPD	MILK	\$M	\$W	\$F	\$G	\$B	\$C
+7	+1.1	+66	+111	+24	+35	+66	+99	+26	+126	+198

- Consigned by: Asher Farms, Pomona, Mo
- Top 15% WW & \$F, Top 20% YW, CW & \$W
- 619 is bred to be a combination of both show heifer and a great cow prospect!
- AF Queen Elsa 619's grandmother, Tracey's top cow, Jestress Gal always brings in a great calf each year.
- She is backed by PVF Insight and Eathington Sub-Zero.
- Juniors, take a close look here!! Halter broke and sells open.

**85 FULPER RITA 277**  
 Birth Date: 10-11-2017 Cow 19124801 Tattoo: 277

#MCC Daybreak		#+Boyd New Day 8005		<b>CW</b>
Quaker Hill Rampage 0A36 [RDF]		#MCC Miss Focus 134		+49
+*16925771 +*QHF Blackcap 6E2 of 4V16 4355		Ideal 4355 of 0T26 2440		<b>MARB</b>
		*QHF Blackcap 4V16 of 1H8		+45
		#SAV 8180 Traveler 004 [RDF]		<b>REA</b>
#SAV Net Worth 4200		+SAV May 2410		+84
Monarch Rita 8019		#GAR Precision 1680		<b>FAT</b>
+16150855 +EF Rita 1184		+EF Rita 793		+008

CED	BEPD	WEPD	YEPD	MILK	\$M	\$W	\$F	\$G	\$B	\$C
+7	+3.2	+69	+120	+21	+42	+61	+107	+49	+156	+244

- Consigned by: Fulper Angus Farm, Booneville, MS
- Top 5% \$F, Top 10% WW & YW, Top 15% RE & \$B, Top 25% CW
- A powerful Rampage daughter out of a deep bodied Net Worth dam.
- This young female is out of Monarch Rita 8019, a very heavily used donor in the Monarch program.
- Lot 85A Sex: Heifer DOB: 9-30-19 Sire: BAR R Jet Black 5063

**86 FULPER BLACKBIRD 186**  
 Birth Date: 9-10-2016 Cow 18798648 Tattoo: 186

#Nichols Extra K205		#Nichols Extra H6		<b>CW</b>
KCF Bennett Southside		Nichols Black Heiress F346		+45
*16430862 #KCF Miss 208 S11		#Bon View New Design 208		<b>MARB</b>
		#KCF Miss 338 P14		+68
		#SAF Focus of ER		<b>REA</b>
#*Mytty In Focus [RDF]		Mytty Countess 906		+36
Sedgewood IN Focus M22		#Bon View New Design 878		<b>FAT</b>
15740669 #Sedgewood New Design K40		+Shadybrook Blkbird 1114 447G		+004

CED	BEPD	WEPD	YEPD	MILK	\$M	\$W	\$F	\$G	\$B	\$C
+7	+2.1	+66	+118	+29	+77	+75	+96	+53	+149	+270

- Consigned by: Fulper Angus Farm, Booneville, Ms
- Top 10% \$M & \$W, Top 15% WW & YW, Top 20% \$F & \$B
- A high growth daughter of Southside. The Southside offspring are all stout made Individuals.
- Her dam is a Mytty In Focus daughter out of a Pathfinder Dam.
- Lot 86A Sex: Heifer DOB: 9-30-19 Sire: Springfield Ramesses 6124

**87 FULPER LADY 177** [MIP]  
 Birth Date: 9-21-2017 Cow 19123108 Tattoo: 177

#MCC Daybreak		#+Boyd New Day 8005		<b>CW</b>
Quaker Hill Rampage 0A36 [RDF]		#MCC Miss Focus 134		+47
+*16925771 +*QHF Blackcap 6E2 of 4V16 4355		Ideal 4355 of 0T26 2440		<b>MARB</b>
		*QHF Blackcap 4V16 of 1H8		+33
		#GAR Retail Product		<b>REA</b>
KD 3115-RP-5069		KD 878 Queen Mother 3115		+90
BAR Lena Lady U10		#WAR Alliance 9126 6006		<b>FAT</b>
16102931 Sedgewood 9126 Alliance K8		Sedgewood Rita 3X25 F9		+040

CED	BEPD	WEPD	YEPD	MILK	\$M	\$W	\$F	\$G	\$B	\$C
+9	+2.0	+61	+109	+23	+51	+59	+102	+47	+149	+244

- Consigned by: Fulper Angus Farm, Booneville, MS
- Top 10% RE & \$F, Top 20% \$B, Top 25% CED, WW & YW
- Here is a combination that works well!
- She is by the ever popular Rampage and out of yet another great Sedgewood dam.
- Lot 87A Sex: Heifer DOB: 9-30-19 Sire: BAR R Jet Black 5063

**88 FULPER BLACKBIRD 217**  
 Birth Date: 10-2-2017 Cow 19123112 Tattoo: 217

#MCC Daybreak		#+Boyd New Day 8005		<b>CW</b>
Quaker Hill Rampage 0A36 [RDF]		#MCC Miss Focus 134		+53
+*16925771 +*QHF Blackcap 6E2 of 4V16 4355		Ideal 4355 of 0T26 2440		<b>MARB</b>
		*QHF Blackcap 4V16 of 1H8		+58
		#SS Traveler 6807 T510		<b>REA</b>
#*SS Objective T510 0T26		SS Miss Rita R011 7R8		+1.01
Highland Blackbird Z4		#CA Future Direction 5321		<b>FAT</b>
+17619046 Monarch Blackbird R730		+ACF Blackbird 3056		+038

CED	BEPD	WEPD	YEPD	MILK	\$M	\$W	\$F	\$G	\$B	\$C
+8	+3.1	+72	+121	+23	+49	+70	+95	+61	+156	+251

- Consigned by: Fulper Angus Farm, Booneville, MS
- Top 4% RE, Top 5% WW, Top 10% YW, Top 15% \$W & \$B, Top 20% \$F & \$G
- This solid performance genetics female is a young attractive Rampage daughter out of an Objective dam.
- This one has a bright future!! Just look at her fancy bull calf.
- Lot 88A Sex: Bull DOB: 9-27-19 Sire: GAR Inertia

**89****FULPER RITA 067**

Birth Date: 9-1-2017

Cow 19123103

Tattoo: 067



#MCC Daybreak		#+Boyd New Day 8005	<b>CW</b>
Quaker Hill Rampage 0A36 [RDF]		#MCC Miss Focus 134	+37
+*16925771		Ideal 4355 of 0T26 2440	<b>MARB</b>
+*QHF Blackcap 6E2 of 4V16 4355		*QHF Blackcap 4V16 of 1H8	+58
		#Hyline Right Time 338	<b>REA</b>
		GAR Precision 2536	+86
Sedgewood 4D7 Rita S4		#Bon View New Design 878	<b>FAT</b>
16936674		Sedgewood Spectacular J41	+027

CED	BEPD	WEPD	YEPD	MILK	\$M	\$W	\$F	\$G	\$B	\$C
+3	+3.2	+62	+106	+20	+53	+55	+92	+58	+149	+246

- Consigned by: Fulper Angus Farm, Booneville, MS
- Top 15% RE, Top 20% WW, \$G & \$B
- The Rampage daughters have worked really well in the Fulper herd.
- Her dam is another proven female from the Sedgewood program.
- Lot 89A Sex: Bull DOB: 9-26-19 Sire: GAR Inertia

**90****LSF RITA 7353**

Birth Date: 10-19-2017

Cow +\*18992886

Tattoo: 7353

#MCC Daybreak		#+Boyd New Day 8005	<b>CW</b>
Quaker Hill Rampage 0A36 [RDF]		#MCC Miss Focus 134	+48
+*16925771		Ideal 4355 of 0T26 2440	<b>MARB</b>
+*QHF Blackcap 6E2 of 4V16 4355		*QHF Blackcap 4V16 of 1H8	+45
		#+SAV Providence 6922	<b>REA</b>
		#SAV Emblynette 3123	+1.06
ANGUS GS		#DHD Traveler 6807	<b>FAT</b>
#SAV Prosperity 9131		+Baldrige Rita R138	-017
Fulper Rita 053			
*17826672			

CED	BEPD	WEPD	YEPD	MILK	\$M	\$W	\$F	\$G	\$B	\$C
+11	+1.4	+71	+108	+33	+63	+90	+77	+53	+130	+232

- Consigned by: LongShot Farms, Fayette, AL
- BW: 74; Adj WW 680; Adj YW 899
- Angus GS Tested, On VitaFerm and MultiMin 90 Program.
- Great Foot Score with (5) Foot Angle and (5) Claw Set. She is a (5) Frame Score
- Top 1% \$W, Top 3% RE, Top 5% Milk, Top 10% WW, Top 20% CED, Top 25% YW
- This docile ET Rampage Daughter has strong genetics all around. Her dam was our first donor cow out of SAV Priority and was the \$9,100 top selling cow at the 2016 Mississippi Angus Association Sale. We know this heifer will mature into a very fertile and efficient brood cow favorite just as her dam has been for our farm.
- Bred AI to SEXED EWA Peyton 642, blood tested safe, due with HEIFER Calf 02/09/20.
- Potential EPDs for EWA Peyton 642 Heifer Calf - CED 12, BW 1.3, WW 84, YW 139, SC.60, HP 12.6, Milk 31, CW 70, Marb.89, RE.90 \$B 178.

**91****WCA HENRIETTA PRIDE 3899**

Birth Date: 9-1-2017

Cow \*19067389

Tattoo: 3899

*EF Commando 1366		#*EF Complement 8088	<b>CW</b>
Baldridge Bronc [RDF]		Riverbend Young Lucy W1470	+27
+*18229425		#*Styles Upgrade J59	<b>MARB</b>
+*Baldrige Isabel Y69		+Baldrige Isabel T935	+54
		#*Connealy Consensus 7229	<b>REA</b>
		+*Sandpoint Blackbird 8809	+39
ISOK		#*AAR Ten X 7008 SA	<b>FAT</b>
#VAR Generation 2100		LEE Queen 2220 of Emuckfaw	+020
WCA Henrietta Pride 3623			
*18386481			

CED	BEPD	WEPD	YEPD	MILK	\$M	\$W	\$F	\$G	\$B	\$C
+12	-6	+60	+100	+22	+74	+67	+66	+44	+111	+218

- Consigned by: LongShot Farms, Fayette, AL
- BW: 65; Adj WW: 585; Adj YW 847
- Angus GS Tested, On VitaFerm and MultiMin 90 Program
- Great Foot Score with (5) Foot Angle and (5) Claw Set. She is a (4) Frame Score
- Top 10% CED, Top 15% BW, CEM, \$M, \$W, Top 25% WW
- This Bred Heifer has solid genetics, is docile, and will be an easy keeping female with a moderate frame.
- Bred AI to SEXED Springfield Ramesses 6124, blood tested safe, due with HEIFER Calf 02/09/20
- Potential EPDs for Springfield Ramesses 6124 Heifer Calf - CED 11, BW 1.0, WW 74, YW 132, SC 1.0, HP 8.0, Milk 25, CW 53, Marb .76, RE .80 \$B 161

**Baldridge Bronc - Sire of Lot 91****Byergo Black Magic****92****MAF LADY 603C**

Birth Date: 12-21-2015

Cow +\*18522243

Tattoo: 603C

+Rito 707 of Ideal 3407 7075		#RR Rito 707	<b>CW</b>
SAV Resource 1441 [RDF]		Ideal 3407 of 1418 076	+43
#+*17016597		#SAV 8180 Traveler 004 [RDF]	<b>MARB</b>
*SAV Blackcap May 4136		#+SAV May 2397	+40
		#GAR Precision 1680	<b>REA</b>
		+GAR Ext 4927	+87
ANGUS GS		#DHD Traveler 6807	<b>FAT</b>
#GAR Retail Product		EE 4286 of Ideal 2240 1254	+0
SandPoint Lady 7869			
+*15692120			

CED	BEPD	WEPD	YEPD	MILK	\$M	\$W	\$F	\$G	\$B	\$C
+5	+2.1	+55	+101	+23	+62	+54	+77	+46	+123	+222

- Consigned by: KimBob Farm, Ward, AR
- Top 4% RE, Top 20% CW
- This female is a high volume SAV Resource dam out of a super good dam by GAR Retail Product.
- Her Black Magic bull calf is proof enough of her production.
- Lot 92A Sex: Bull DOB: 8-16-19 Sire: Byergo Black Magic 3348

**93****STILL MISS BEAUTY 1132**

Birth Date: 3-11-2011

Cow +17088793

Tattoo: 1132

#+*GAR Grid Maker		#GDAR Traveler 044	<b>CW</b>
SAV Bismarck 5682 [RDF]		GAR Precision 2536	+29
#+15109865		#Schoenes Fix It 826	<b>MARB</b>
SAV Abigale 0451		SAV Abigale 6062	+51
		#*N Bar Prime Time D806	<b>REA</b>
		Green Garden Jilt C242 S1	+21
		#+*EXAR New Look 2971	<b>FAT</b>
*#Gardens Prime Star		Exar Miss Beauty C 3533	+033
Exar Miss Beauty 2137			
15617519			

CED	BEPD	WEPD	YEPD	MILK	\$M	\$W	\$F	\$G	\$B	\$C
+11	+1.5	+46	+89	+18	+61	+35	+89	+39	+128	+227

- Consigned by: Haley Hill Farm, Quitman, AR
- Top 15% CED
- A powerful Bismarck daughter out of a Prime Star dam from the Express Ranches herd.
- She is a solid producer worthy of a close look!
- Bred AI on 3-17-19 to Buford Black Jack A414 and then pasture exposed after 3-29-19 to HH Black Granite 649. Safe.

**94****GR 31 [DDP]**

Birth Date: 1-24-2017

Cow 19114896

Tattoo: GR31

#*AAR Ten X 7008 SA		#*Mytty In Focus [RDF]	<b>CW</b>
EXAR Stud 4658B		#AAR Lady Kelton 5551	+33
+*17908266		#*Summitcrest Complete 1P55 [RDF]	<b>MARB</b>
		+DRMCTR 111 Rita 6108	+73
		#GDAR Traveler 71	<b>REA</b>
		Sitz Everelda Entense 1137	+31
		#Sitz Traveler 8180	<b>FAT</b>
		#DHD Traveler 6807	+0
		+TF Rita Traveler 6807 184	
		+Sherrod Rita 0205	

CED	BEPD	WEPD	YEPD	MILK	\$M	\$W	\$F	\$G	\$B	\$C
+12	+0	+47	+92	+21	+44	+41	+87	+55	+142	+228

- Consigned by: G & R Farm, Mantachie, MS
- Top 10% CED, Top 20% \$G, Top 25% BW & \$B
- Royal pedigree in this Stud daughter out of an 8180 daughter back to 6807.
- Lots of maternal qualities in this low birth female.
- Pasture exposed from 5-10-19 to 7-25-19 to G236 Fortress. Safe.

# 95 GR 29 MS LENA

Birth Date: 1-29-2017 Cow 19114888 Tattoo: GR29

EXAR Stud 4658B +*17908266	#*AAR Ten X 7008 SA	#*Mytty In Focus [RDF]	<b>CW</b>
	+*BoBo Rita 1559	#AAR Lady Kelton 5551	+43
MST Bird 18488864	#*SAV Thunderbird 9061	#*Summitcrest Complete 1P55 [RDF]	<b>MARB</b>
	G-76 Black Lady	+DRMCTR 111 Rita 6108	+76
		#*SAV Final Answer 0035 [RDF]	<b>REA</b>
		SAV Emblynette 7411	+39
		Emblazon S210	<b>FAT</b>
		Bentons Lady Pride 2303	+033

CED	BEPD	WEPD	YEPD	MILK	\$M	\$W	\$F	\$G	\$B	\$C
+7	+2.1	+64	+115	+20	+60	+53	+95	+54	+149	+253

- Consigned by: G & R Farm, Mantachie, MS
- Top 15% YW & \$B, Top 20% WW, MARB & \$F, Top 25% \$G
- Another fancy young heifer by Stud and this one is out of a female combining Final Answer and Emblazon.
- Pasture exposed from 5-10-19 to 7-25-19 to G236 Fortress. Safe.

# 96 MAF/ NAF LADY ELBA 239B

Birth Date: 2-25-2014 Cow \*18413762 Tattoo: 239B

Buford Oklahoma X239 *16701554	#SAV Pioneer 7301	#*SAV Final Answer 0035 [RDF]	<b>CW</b>
	J Bar 7 Elba 7297	SAV Blackbird 5297	+34
Buford Elba 855Y +*17266491	*Buford BlueStem 9974	#Baldridge Nebraska 901	<b>MARB</b>
	#+SAV Elba 4436	J Bar 7 Julie Jan 5406	+30
		#SAV Net Worth 4200	<b>REA</b>
		+LCC Erica NG724	+54
		#SAV 8180 Traveler 004 [RDF]	<b>FAT</b>
		SAV Elba 1094	+028

CED	BEPD	WEPD	YEPD	MILK	\$M	\$W	\$F	\$G	\$B	\$C
+5	+1.9	+57	+102	+27	+64	+63	+88	+34	+122	+222

- Consigned by: Newberry Angus Farm, Paragould, AR
- Top 20% YW & \$W, Top 25% WW & \$F
- 239B has been a donor in our program and she has been flushed two times with an average of 9.5 embryos per flush. She is out of Buford Elba 855Y which is a donor in our program too. She is sired by Buford Oklahoma X239 which is a son of SAV Pioneer 7301.
- She is bred to Camptown Topshelf 7006 (Reg # 19038810) which is out of the famous cow Buford 811Y and she is a full sister to Buford 9000. She is pasture exposed from 11-20-18 to 2-6-19. Should calve before sale.
- Make sure you look this cow up on sale day.

# 97 WF PROPHET 278

Birth Date: 8-27-2015 Cow 18450910 Tattoo: 278

GAR Prophet [RDF] #*16295688	#CRA Bextor 872 5205 608	#BAR Ext Traveler 205	<b>CW</b>
	+GAR Objective 1885	Cra Lady Jaye 608 498 S Easy	+43
<b>ISOK</b>	#*SS Objective T510 0T26	#*SS Objective T510 0T26	<b>MARB</b>
GAR Objective 79U +16644992	GAR Predestined 3355	GAR 1407 New Design 2232	+1.10
		#SS Traveler 6807 T510	<b>REA</b>
		SS Miss Rita R011 7R8	+45
		#*GAR Predestined	<b>FAT</b>
		#GAR Precision S141	+046

CED	BEPD	WEPD	YEPD	MILK	\$M	\$W	\$F	\$G	\$B	\$C
+10	+4	+64	+107	+24	+61	+73	+48	+70	+118	+214

- Consigned by: RJS Angus, Gilmer, TX
- Top 10% Marb, \$W & \$G, Top 20% CED & WW, Top 25% YW
- A deep bodied Prophet daughter from the Windham Farms in Louisiana.
- Her dam is a super good Objective daughter that has been used as a donor in the Windham herd.
- Lot 97A Sex: Heifer DOB: 9-13-19 Sire: KCF Bennett.



GAR Prophet - Sire of Lot 97

# 98 RJS 003 TOUR OF DUTY 666

Birth Date: 12-16-2016 Cow 18826412 Tattoo: 666

RB Tour Of Duty 177 [RDF] +*16984170	+*Werner War Party 2417	#*Connealy Onward	<b>CW</b>
	+*BA Lady 6807 305	+BAAR USA Lady Jaye 489	+48
Fulper Twilight 003 17857848	#SydGen Mandate 6079	#Vermilion Dateline 7078	<b>MARB</b>
		+GD Lady Hi Flyer 302	+52
		#*SS Objective T510 0T26	<b>REA</b>
		SydGen Gina 4235	+52
		#+HA Image Maker 0415	<b>FAT</b>
		Twilight HA 856	+019

CED	BEPD	WEPD	YEPD	MILK	\$M	\$W	\$F	\$G	\$B	\$C
+6	+2.5	+62	+107	+33	+46	+68	+87	+49	+136	+222

- Consigned by: RJS Angus, Gilmer, TX
- Top 15% \$W, Top 25% WW & YW
- This is an attractive young Tour of Duty daughter out of a dam combining Mandate and Image Maker.
- This young cow should be a front pasture kind!
- Lot 98A Sex: Heifer DOB: 9-19-19 Sire: SF Speedway

# 99 RJS 145 CAPITALIST 640

Birth Date: 9-17-2016 Cow 18723000 Tattoo: 640

Connealy Capitalist 028 [RDF] *16752262	#*SAV Final Answer 0035 [RDF]	#Sitz Traveler 8180	<b>CW</b>
	Prides Pita of Conanga 8821	SAV Emulous 8145	+41
TT Miss Pride 1385 W272 145 18082295	*Connealy Comrade 1385 [RDF]	#CRA Bextor 872 5205 608	<b>MARB</b>
		Prides Trav of Conanga 6499	+52
		#*Connealy Consensus 7229	<b>REA</b>
		Happy Gee of Conanga 919	+60
		#+GDAR Game Day 449 [RDF]	<b>FAT</b>
		TT Miss Pride W063	+034

CED	BEPD	WEPD	YEPD	MILK	\$M	\$W	\$F	\$G	\$B	\$C
+11	-.2	+63	+112	+28	+72	+74	+83	+45	+128	+238

- Consigned by: RJS Angus, Gilmer, TX
- Top 10% \$W, Top 15% CED, Top 20% BW & WW, Top 25% \$M
- Capitalist daughters are making some of the top cows of the Angus breed.
- Note her dam combines Comrade and Game Day.
- This one has the look of a brood cow.
- Lot 99A Sex: Bull DOB: 9-13-19 Sire: KCF Bennett

# 100 RJS 3182 EXARPOWER SOURCE 626

Birth Date: 9-2-2016 Cow 18722988 Tattoo: 626

EXAR PowerSource 4723B +*17740199	#*EXAR Denver 2002B	#*EXAR Upshot 0562B	<b>CW</b>
	+*EXAR Lucy 2944	+Exar Royal Lass 1067	+36
Basin Rita 3182 +*17610318	#+*Rito 9M25 of Rita 5F56 Pred	#*Connealy Consensus 7229	<b>MARB</b>
	+EXAR Rita 3819	+*EXAR Lucy 9703	+1.13
		#*GAR Predestined	<b>REA</b>
		+*Rita 5F56 of 1198 FD	+37
		#*GAR Predestined	<b>FAT</b>
		+RTR Rita 5116	+028

CED	BEPD	WEPD	YEPD	MILK	\$M	\$W	\$F	\$G	\$B	\$C
+8	+2.4	+54	+93	+30	+60	+62	+78	+72	+150	+255

- Consigned by: RJS Angus, Gilmer, TX
- Top 4% MARB, Top 5% \$G, Top 20% \$B, Top 25% CED
- A product of the Basin Angus Ranch!
- She is a Power Source. His dam is a Rito 9M25 daughter that has been a great producer.
- Lot 100A Sex: Bull DOB: 9-14-19 Sire: BQ 23 Fortress 622

# 101 RJS 3473Z TEN X 625

Birth Date: 7-10-2016 Cow 18722980 Tattoo: 625

AAR Ten X 7008 SA *15719841	#*Mytty In Focus [RDF]	#SAF Focus of ER	<b>CW</b>
	#AAR Lady Kelton 5551	Mytty Countess 906	+24
Complete New Design 3473Z +*17630085	#*Summitcrest Complete 1P55 [RDF]	SAV Adaptor 2213	<b>MARB</b>
	+GAR 1407 New Design 1234	+HSAF Lady Kelton 504B	+86
		#CF Right Design 1802	<b>REA</b>
		Summitcrest Elba 1M17	+58
		#Bon View New Design 1407 [RDF]	<b>FAT</b>
		+GAR 044 Traveler 2328	+004

CED	BEPD	WEPD	YEPD	MILK	\$M	\$W	\$F	\$G	\$B	\$C
+10	+6	+41	+78	+32	+58	+52	+78	+64	+143	+243

- Consigned by: RJS Angus, Gilmer, TX
- Top 10% MARB & \$G, Top CED & \$B, Top 25% RE
- A high volume Ten X daughter out of a super good Summitcrest Complete dam.
- This one has the genetics to get the job done.
- Lot 101A Sex: Bull DOB 9-19-19 Sire: BQ 23 Fortress 622



# 102 RRR BURGESS DUTY 5214

Birth Date: 8-28-2015

Cow 18707682

Tattoo: 5214

#+\*Werner War Party 2417  
**RB Tour Of Duty 177** [RDF]  
 +\*16984170 +\*BA Lady 6807 305

KCF Bennett Energizer  
**RRR Burgess Energizer 1125**  
 17006659 +Springfield Burgess 3079

#\*Connealy Onward  
 +BAAR USA Lady Jaye 489  
 #Vermilion Dateline 7078  
 +GD Lady Hi Flyer 302  
 #\*SS Objective T510 OT26  
 #KCF Miss 6106 R90  
 #+GAR Expectation 4915  
 RLD Burgess E17

<b>CW</b>
+46
<b>MARB</b>
+47
<b>REA</b>
+74
<b>FAT</b>
-038

CED	BEPD	WEPD	YEPD	MILK	\$M	\$W	\$F	\$G	\$B	\$C
+9	+1.7	+57	+105	+32	+47	+64	+97	+52	+149	+240

- Consigned by: RJS Angus, Gilmer, TX
- Top 15% \$F, Top 20% \$B, Top 25% CED, RE & \$W
- A great Tour of Duty daughter out of a KCF Bennett Energizer daughter out of a great Springfield Burgess female.
- Lot 102A Sex: Bull DOB:9-2-19 Sire: SS Niagara

# 105 BARRY POWER HOUSE 1024

Birth Date: 10-24-2018

Cow 19441199

Tattoo: 1024

#+\*PA Power Tool 9108  
**PA Full Power 1208**  
 +\*16981588 \*Pine View SQR Rita W091

#\*B/R New Day 454  
**2T Blackcap 3005**  
 +\*17514615 +44 Blackcap 8229

#\*GAR Predestined  
 \*Shamrocks Beebee Queen 3095  
 #+GAR New Design 5050  
 +\*Pine View Rita R084  
 #+Boyd New Day 8005  
 B/R Ruby 1224  
 #\*Gardens Prime Star  
 +EXAR Blackcap 5333

<b>CW</b>
+33
<b>MARB</b>
+1.13
<b>REA</b>
+1.66
<b>FAT</b>
+007

CED	BEPD	WEPD	YEPD	MILK	\$M	\$W	\$F	\$G	\$B	\$C
+3	+2.1	+57	+102	+26	+75	+58	+81	+78	+159	+281

- Consigned by: Barry Farms, Corinth, MS
- Top 3% \$G, Top 4% Marb, Top 10% \$B, Top 15% \$M
- Take a look at this Full Power daughter out of a New Day 454 dam.
- This powerful heifer has a \$C of +284 placing her in the top 4% for \$C.
- Sells Open.

# 103 T F A EVAS 110D

Birth Date: 9-11-2016

Cow \*18646352

Tattoo: 110D

#\*Connealy Onward  
**Sitz Upward 307R**  
 #14963730 Sitz Henrietta Pride 81M  
**ANGUS**  
 #\*Connealy Final Product  
**EXAR Evas 6092**  
 \*17193704 +Exar Evas 71020

#Connealy Lead On  
 Altune of Conanga 6104  
 #Sitz Value 7097  
 Sitz Henrietta Pride 1370  
 \*Connealy Product 568  
 #Ebonista of Conanga 471  
 #EXAR 263C  
 +GAR Evas Ext 1525

<b>CW</b>
+54
<b>MARB</b>
+54
<b>REA</b>
+70
<b>FAT</b>
+015

CED	BEPD	WEPD	YEPD	MILK	\$M	\$W	\$F	\$G	\$B	\$C
+10	-3	+66	+121	+36	+69	+84	+95	+49	+145	+257

- Consigned by: Twisted Fork Angus Farms, Collierville, TN
- Top 3% \$W, Top 10% YW, Top 15% WW, CW & \$F, Top 20% BW & \$B
- A high volume daughter of Upward out of the granddam of the good Lot 30 bull.
- A great young cow that always does a good job.
- Bred safe in calf to TFA Pedigree 720 due between 10-2-19 and 12-8-19. Safe.

# 106 BARRY MISS COWBOY 0903

Birth Date: 9-3-2018

Cow 19439223

Tattoo: 0903

\*HA Outside 3008  
**HA Cowboy Up 5405**  
 \*18286467 #\*HA Blackcap Lady 1602  
 #+SAV Bismarck 5682 [RDF]  
**Wellington Rita 001**  
 +17475166 Limestone Rita R401

\*KG Solution 0018  
 #\*HA Ever Lady 1575  
 #Sitz Upward 307R  
 HA Blackcap Lady 5515  
 #+\*GAR Grid Maker  
 SAV Abigale 0451  
 #BR Midland  
 EXG Miss 1204 602CM181 LS

<b>CW</b>
+32
<b>MARB</b>
+1.31
<b>REA</b>
+1.38
<b>FAT</b>
-004

CED	BEPD	WEPD	YEPD	MILK	\$M	\$W	\$F	\$G	\$B	\$C
+10	+6	+57	+99	+14	+43	+45	+83	+36	+118	+196

- Consigned by: Barry Farms, Corinth, MS
- Top 20% CED
- A low birth Cowboy Up daughter out of a Bismarck dam.
- This heifer has the genetic potential to become a top brood cow.
- Sells Open.

# 104 BARRY CITATION 0919

Birth Date: 9-19-2018

Cow 19485919

Tattoo: 0919

+\*KCF Bennett Consent Y75  
**KCF Bennett Citation** [RDF]  
 \*18476755 \*Thomas Patricia 9705  
 #\*VAR Index 3282  
**2T Miss Liberty 6029**  
 18741449 Thomas Miss Liberty 2990

#\*Connealy Consensus  
 +KCF Miss Protege W148  
 #\*SS Objective T510 OT26  
 +Thomas Patricia 71138  
 #+GAR Ingenuity  
 +\*Sandpoint Blackbird 8809  
 #\*Summitcrest Complete 1P55 [RDF]  
 Thomas Miss Liberty 5475

<b>CW</b>
+43
<b>MARB</b>
+1.83
<b>REA</b>
+1.69
<b>FAT</b>
-007

CED	BEPD	WEPD	YEPD	MILK	\$M	\$W	\$F	\$G	\$B	\$C
+8	+6	+62	+109	+26	+51	+65	+82	+65	+147	+242

- Consigned by: Barry Farms, Corinth, MS
- Top 10% \$G, Top 20% Marb & \$W, Top 25% WW, YW & \$B
- A young fancy KCF Bennett Citation daughter out of a great producing dam that combines Ingenuity and Summitcrest Complete.
- Sells Open.

# 107 BARRY FULL POWER 0958

Birth Date: 9-5-2018

Cow 19438799

Tattoo: 0958

#+\*PA Power Tool 9108  
**PA Full Power 1208**  
 +\*16981588 \*Pine View SQR Rita W091  
 #HARB Pendleton 765 JH  
**BoBo Pride 0683**  
 16815490 Lauras Total Classic 838

#\*GAR Predestined  
 \*Shamrocks Beebee Queen 3095  
 #+GAR New Design 5050  
 +\*Pine View Rita R084  
 #\*SAV Final Answer 0035 [RDF]  
 #HARB Black Lady 375 JH  
 #TC Total 410  
 Laura's Miss New Level 629

<b>CW</b>
+36
<b>MARB</b>
+1.72
<b>REA</b>
+1.61
<b>FAT</b>
+009

CED	BEPD	WEPD	YEPD	MILK	\$M	\$W	\$F	\$G	\$B	\$C
+3	+2.2	+60	+109	+24	+56	+56	+97	+57	+154	+256

- Consigned by: Barry Farms, Corinth, MS
- Top 15% \$F & \$B, Top 20% YW, Top 25% \$G
- Here is another really top quality Full Power daughter.
- Her dam is a Pendleton daughter from the BoBo program.
- Sells Open.



KCF Bennett Citation - Sire of Lot 104



PA Full Power 1208 - Sire of Lot 105



CSC Eloise HD Epic 680 - Lot 108



T5 Forever Lady 801 - Lot 111

# 108 CSC ELOISE HD EPIC 680 [DDP-NHF]

Birth Date: 9-27-2018 Cow 19479733 Tattoo: 680

3F Epic 4631 17950219	*Varilek Product 2010 04	**Connealy Final Product Varilek Pearl 0006 014	<b>CW</b> +43
	Zebo Queen 1072	**EF Complement 8088 EXG Blackcap 6247 PPC [RDF]	<b>MARB</b> +98
AF Miss Eloise HD 680 17867995	**Hoover Dam AF Miss Eloise 1961-176	**SydGen CC&7 #Erica of Ellston C124 #+*HSAF Bando 1961 GPN Flora Bee 4N22	<b>REA</b> +47
			<b>FAT</b> +036

CED	BEPD	WEPD	YEPD	MILK	\$M	\$W	\$F	\$G	\$B	\$C
+12	-1	+67	+117	+17	+59	+65	+80	+65	+146	+248

- Consigned by: Circle S Cattle, Louin, MS
- Top 4% SF, Top 10% YW & SB, Top 15% WW, Top 20 \$W, Top 25% CW
- We are bringing our best! This EPIC daughter is one to find on sale day. Stout made, long fronted and sound structured. She is boasting a set of EPDs that are quite impressive having 8 EPDs in the top 20% of the breed including a top 10% +144 on \$Beef.
- You will look far and wide to find a female to match the combination of phenotype and genetic potential that 680 has.
- Sells Open.

# 109 CSC Blossom 898

Birth Date: 10-18-2018 Cow \*19479694 Tattoo: 898

SydGen Enhance 18170041	*SydGen Exceed 3223 [RDF]	+*SydGen Googol +*SydGen Forever Lady 1255	<b>CW</b> +77
	SydGen Rita 2618	**SydGen Liberty GA 8627 [RDF]	<b>MARB</b> +72
LakeView Blossom 609 *18653240	#+*GAR Prophet [RDF] LakeView Blossom 115	#Fox Run Rita 9308 #ERA Bextor 872 5205 608 +GAR Objective 1885 LakeView Perfect 905 LakeView Blossom 801	<b>REA</b> +76
			<b>FAT</b> +025

CED	BEPD	WEPD	YEPD	MILK	\$M	\$W	\$F	\$G	\$B	\$C
+10	+1.5	+83	+152	+31	+81	+95	+128	+58	+185	+321

- Consigned by: Circle S Cattle, Louin, MS
- Top 2% SW, Top 3% SM & SB, Top 4% SF, Top 5% YW, Top 10% CED, WW & \$G, Top 15% CW & MARB, Top 20% BW
- Note, \$C of +311 puts her in the top 1% of the breed!
- This Enhance female is sure bringing the performance and is showing what Enhance does so well by putting performance and pedigree into a great package.
- She has the added bonus of being out of a GAR Prophet daughter that continues to raise good ones.
- The EPDs this heifer brings is nothing short of spectacular having 17 EPDs in the top 20% and with a top 3%, +185 \$Beef - that is impressive! Tie into this one to cover all the bases.
- Sells Open.

# 110 CSC ERNSTINE RAMPAGE 897

Birth Date: 10-15-2018 Cow \*19479607 Tattoo: 897

Quaker Hill Rampage 0A36 [RDF] +*16925771	#MCC Daybreak +*QHF Blackcap 6E2 of 4V16 4355	#+Boyd New Day 8005 #MCC Miss Focus 134 Ideal 4355 of 0T26 2440 *QHF Blackcap 4V16 of 1H8	<b>CW</b> +41
	+*Dameron First Impression	**SAV Brilliance 8077 Dameron Northern Miss 3114	<b>MARB</b> +28
2-G Ernestine 948X 410 18101420	Gaines' Ernestine Telecast	+*Sinclair Telecast 0153 Monogram Ernestine 8006	<b>REA</b> +88
			<b>FAT</b> -005

CED	BEPD	WEPD	YEPD	MILK	\$M	\$W	\$F	\$G	\$B	\$C
+0	+2.5	+71	+114	+18	+44	+67	+76	+41	+117	+196

- Consigned by: Circle S Cattle, Louin, MS
- Top 15% RE, Top 20% SF, Top 25% WW
- Rampage daughters bring the performance and this one is following suit. She is really neat made and showing great potential for any cowherd.
- Her dam is a stunning First Impression daughter that is stylish and stout. We are excited to see the future this female has for her new owners.
- Sells Open.

# 111 T5 FOREVER LADY 801

Birth Date: 1-12-2018 Cow +19185957 Tattoo: 801

Gambles Hot Rod 13897812	#Famous 7001 +Champion Hill Lady 703	#SAF Fame TK Karen 1369 #Leachman Saugahatchee 3000C +Champion Hill Lady Stone 731	<b>CW</b> +38
	*Bear Mtn Owyhee 5012	#+*Rito 112 of 2536 Rito 616 #Bear Mtn Barbara 2112	<b>MARB</b> +28
Bear MtnTM Forever Lady 8097 16069922	+Bear Mtn Forever Lady 4086	#B/R New Design 036 Bear Mtn Forever Blackcap	<b>REA</b> +51
			<b>FAT</b> -039

CED	BEPD	WEPD	YEPD	MILK	\$M	\$W	\$F	\$G	\$B	\$C
I-2	I+3.8	I+51	I+89	I+19	+23	+36	+107	+39	+146	+212

- Consigned by: Ponderosa Farm, Taylorsville, MS
- This stout made Hot Rod daughter is sure to be a great addition to any herd. Her dam is the exquisite Bear Mountain Lady 8097 that has produced well at 3 Aces Cattle Company.
- An exciting part of this consignment is that she sells safe in calf to SAV Raindance 6848, due November 15, 2019. Our Raindance calves have been standouts since they were born and continue to impress.
- Flush Sister to Lot 112.

# 112 T5 FOREVER LADY 800

Birth Date: 1-15-2018 Cow +19185956 Tattoo: 800

Gambles Hot Rod 13897812	#Famous 7001 +Champion Hill Lady 703	#SAF Fame TK Karen 1369 #Leachman Saugahatchee 3000C +Champion Hill Lady Stone 731	<b>CW</b> +38
	*Bear Mtn Owyhee 5012	#+*Rito 112 of 2536 Rito 616 #Bear Mtn Barbara 2112	<b>MARB</b> +28
Bear MtnTM Forever Lady 8097 16069922	+Bear Mtn Forever Lady 4086	#B/R New Design 036 Bear Mtn Forever Blackcap	<b>REA</b> +51
			<b>FAT</b> -039

CED	BEPD	WEPD	YEPD	MILK	\$M	\$W	\$F	\$G	\$B	\$C
I-2	I+3.8	I+51	I+89	I+19	+23	+36	+107	+39	+146	+212

- Consigned by: Ponderosa Farm, Taylorsville, MS
- Flushmate to Lot 111. What a great pair of breeding tools these two would make.
- Sells safe to PF Coleman 709. 709, Reg #18871191, is a Coleman Charlo son out of one of Coleman's top donors, Donna 905.



Bear MtnTM Forever Lady 8097 - Donor Dam of Lots 111 and 112



PF Trust 871 - Lot 113

## 113 PF TRUST 871

Birth Date: 10-12-2018

Cow +19484378

Tattoo: 871

HA Cowboy Up 5405 *18286467	*HA Outside 3008	*KG Solution 0018	<b>CW</b>
	**HA Blackcap Lady 1602	**HA Ever Lady 1575	I+43
		#Sitz Upward 307R	<b>MARB</b>
		HA Blackcap Lady 5515	I+43
		*SCR Promise 4042	<b>REA</b>
	**SydGen Trust 6228	*SydGen Forever Lady 4413	I+.70
GAR Trust R393 +*17677105	GAR 5050 New Design R39	#+GAR New Design 5050	<b>FAT</b>
		+GAR Objective R137	I-.028

CED	BEPD	WEPD	YEPD	MILK	\$M	\$W	\$F	\$G	\$B	\$C
I+6	I+1.2	I+64	I+109	I+20	+43	+61	+92	+48	+141	+226

- Consigned by: Ponderosa Farm, Taylorsville, MS
- Top 20% WW & \$F, Top 25% YW, RE & \$B
- 871 is a special heifer out of a very special cow.
- You will find this heifer with plenty style and with added rib plus dimension.
- Her dam, GAR R393, bred and raised by Gardiner Ranch, is one of our cornerstone donor cows as she is highly fertile, powerfully made and her embryo progeny performance speaks for itself.
- By matching Cowboy Up with the R393 cow, this heifer offers many opportunities to advance your genetic base.
- **Sells Open**

## 114 PF FANNY 875

Birth Date: 12-22-2018

Cow +19488114

Tattoo: 875

SAV Raindance 6848 (RDF) +*18578965	#+*Coleman Charlo 0256	**OCC Paxton 730P	<b>CW</b>
	*SAV Blackcap May 4136	+Bohi Abigale 6014	I+39
		#SAV 8180 Traveler 004 (RDF)	<b>MARB</b>
		#+SAV May 2397	I-.08
	+*Duff Basic Instinct 6501	**OCC Missing Link 830M	<b>REA</b>
DLS Florabelle Fanny BI 430 *17938225	#Sitz Florabelle Fanny 3092	OCC Dixie Erica 814G	I+.79
		#OCC Bonanza 880B	<b>FAT</b>
		Sitz Florabelle Fanny 2367	I+.011

CED	BEPD	WEPD	YEPD	MILK	\$M	\$W	\$F	\$G	\$B	\$C
I+3	I+2.5	I+59	I+102	I+26	+68	+65	+81	+21	+101	+199

- Consigned by: Ponderosa Farm, Taylorsville, MS
- If you are looking for style, soundness and maternal greatness, this is the heifer! This is not an easy one to let go.
- We have been highly impressed with our Raindance calves by the way he transmits performance along with style and balance.
- The dam of this heifer, LCA Florabelle Fanny 430, that we purchased from Darren Schrage in Hillsboro, KS has been lights out in production for Ponderosa.
- 430 is the model Angus female that is highly maternal, big middle, sound structured, and with perfect profile.
- **Sells Open.**

## 115 WC Lass L57

Birth Date: 12-12-2016

Cow +19184974

Tattoo: L57

BC Lookout 7024 #+14791623	OCC Legend 616L	#+OCC Emblazon 854E	<b>CW</b>
	Gibbet Hill Mignonne E37	OCC Blackbird 632J	I+24
		#Papa Equator 2928	<b>MARB</b>
		Gibbet Hill Mignonne TR 29	I+.26
		#Bon View New Design 878	<b>REA</b>
	#+*WCC Special Design L309	N Bar Primrose 2424	I+.32
WCC Lass 471 14967823	WCC Lass 1143	#Rito 616 of 4B20 6807	<b>FAT</b>
		Sedgwicks Lass 3109	I+.010

CED	BEPD	WEPD	YEPD	MILK	\$M	\$W	\$F	\$G	\$B	\$C
I+3	I+2.4	I+46	I+75	I+18	+48	+41	+71	+31	+102	+180

- Consigned by: Scott Wingert, Rose Bud, AR
- A powerful Lookout daughter out of a great donor cow, WCC Lass 471!
- She has the thickness and look to make a really great cow.
- **Sells Open.**

## 116 WC JILTED GAL BR16

Birth Date: 3-28-2016

Cow +18530707

Tattoo: BR16

SAV Brilliance 8077 #*16107774	#+SAV Bismarck 5682 (RDF)	#+*GAR Grid Maker	<b>CW</b>
	SAV Blackcap May 5270	SAV Abigale 0451	I+28
		#SAV 8180 Traveler 004 (RDF)	<b>MARB</b>
		#+SAV May 2420	I+.08
	#Schurrtop MC 2500	#Schurrtop MC	<b>REA</b>
Lemmon Jilt S214 15485863	+Lemmon Jilt H456	Schurrtop RS 1413 2153	I+.57
		#*N Bar Emulation EXT	<b>FAT</b>
		Lemmon Jilt 1394	I-.012

CED	BEPD	WEPD	YEPD	MILK	\$M	\$W	\$F	\$G	\$B	\$C
I+3	I+2.4	I+44	I+80	I+34	+42	+54	+76	+28	+104	+177

- Consigned by: Scott Wingert, Rose Bud, AR
- An attractive, deep bodied Brilliance daughter out of a Jilt dam from the Lemmon herd.
- Note, she traces to the foundation performance sire, EXT.
- **Bred 1-6-19 to Tour of Duty. Safe.**

## 117 WC ELLIA ELLIA IN37

Birth Date: 1-5-2018

Cow 19184125

Tattoo: IN37

PVF Insight 0129 +*16805884	#*SAV Brilliance 8077	#+SAV Bismarck 5682 (RDF)	<b>CW</b>
	+*PVF Missie 790	SAV Blackcap May 5270	N/A
		#+*PVF New Horizon 001	<b>MARB</b>
		PVF Miss Raptor 024	N/A
	WCC KLR Grand Torino 95	#TC Gridiron 258	<b>REA</b>
Wallace Eila Eila 362 17613960	+Dac Eila Eila 105	#Sandpoint WAR Evergreen 3023	N/A
		+*BC Lookout 7024	<b>FAT</b>
		#+Eila Eila 755P of Whitestone	N/A

CED	BEPD	WEPD	YEPD	MILK	\$M	\$W	\$F	\$G	\$B	\$C
+8	+7	+58	+101	+24	+58	+57	N/A	N/A	N/A	N/A

- Consigned by: Scott Wingert, Rose Bud, AR
- A young fancy bred heifer by the popular show bull, PVF Insight.
- She is backed by a really strong dam on the bottom side.
- She is bred to Mr. Misunderstood, a bull raised in the Wingert herd and a highly successful show bull.
- **Pasture exposed from 6-10-19 to 8-10-19. Safe.**

## 118 WC LADY DUTY 1206

Birth Date: 1-10-2016

Cow 18522168

Tattoo: 1206

RB Tour Of Duty 177 (RDF) +*16984170	#+*Werner War Party 2417	#*Connealy Onward	<b>CW</b>
	+*BA Lady 6807 305	+BAAR USA Lady Jaye 489	I+56
		#Vermilion Dateline 7078	<b>MARB</b>
		+GD Lady Hi Flyer 302	I+38
		#TC Gridiron 258	<b>REA</b>
	WCC KLR Grand Torino 95	#Sandpoint WAR Evergreen 3023	I+.92
FB Ruby of Tiffany 357 17156883	Miss Edsl 094	#KCF Bennett Total	<b>FAT</b>
		Double Creek Ruby of Tiffany	I-.059

CED	BEPD	WEPD	YEPD	MILK	\$M	\$W	\$F	\$G	\$B	\$C
+5	+2.8	+66	+116	+33	+48	+70	+89	+52	+141	+231
I+9	I+.4	I+50	I+90	I+23	N/A	+48	N/A	N/A	N/A	N/A

- Consigned by: Scott Wingert, Rose Bud, AR
- A really nice Tour of Duty daughter out of a dam that traces to the great Ruby of Tiffany family of females.
- This female has a perfect udder!
- **Bred AI on 1-16-19 to SAV Prosperity 9131. Safe.**

## 119 WC Lass M69

Birth Date: 5-2-2019

Cow Reg.No.Pdg.

Tattoo: M69

WC Mr Misunderstood 317 +18967741	*Greene Pokerface 1304	+*Silveiras Style 9303	<b>CW</b>
	Wallace Eila Eila 362	Gohr Covergirl 1124	N/A
		WCC KLR Grand Torino 95	<b>MARB</b>
		+Dac Eila Eila 105	I+.26
		OCC Legend 616L	<b>REA</b>
	#+BC Lookout 7024	Gibbet Hill Mignonne E37	N/A
WC Lass L57 +19184974	WCC Lass 471	#+*WCC Special Design L309	<b>FAT</b>
		WCC Lass 1143	I+.010

CED	BEPD	WEPD	YEPD	MILK	\$M	\$W	\$F	\$G	\$B	\$C
I+7	I+1.7	I+56	I+101	I+21	+55	+48	N/A	N/A	N/A	N/A
I+3	I+2.4	I+46	I+75	I+18	+48	+41	+71	+31	+102	+180

- Consigned by: Scott Wingert, Rose Bud, AR
- Check out this fancy young open heifer by Mr. Misunderstood.
- She possesses that same great eye appeal that made her sire so popular.
- Dam is a flush sister to Lot 115.
- **Sells Open.**



# 120 WC FRONTIER LADY PR14

Birth Date: 2-28-2014 Cow 17881612 Tattoo: PR14

#+SAV Providence 6922	#+SAV 004 Predominant 4438	<b>CW</b>
SAV Prosperity 9131	SAV May 7238	+28
#16396523	#BCC Bushwacker 41-93	<b>MARB</b>
#SAV Emblynette 3123	#SAV Emblynette 1177	+39
#+B/R New Frontier 095	#B/R New Design 036	<b>REA</b>
TBC Frontier Lady 704	White Fence Pride H1	+38
14950291	SA Double Power 1002	<b>FAT</b>
WRR Lady Power 005	WRR Miss Fortune 001	+007

CED	BEPD	WEPD	YEPD	MILK	\$M	\$W	\$F	\$G	\$B	\$C
+1	+3.9	+54	+86	+22	+65	+45	+79	+40	+119	+219

- Consigned by: Scott Wingert, Rose Bud, AR
- A highly attractive Prosperity daughter out of a super good 095 dam.
- This one always does a good job.
- Pasture exposed from 6-10-19 to 8-10-19 to WC Mr. Misunderstood. Safe.

# 121 SSR PENELOPE 2835

Birth Date: 11-30-2015 Cow 18782755 Tattoo: 2835

#*SAV Final Answer 0035 [RDF]	#Sitz Traveler 8180	<b>CW</b>
KCF Bennett Absolute	SAV Emulous 8145	+45
#*16430795	#+Wulffs Ext 6106	<b>MARB</b>
Thomas Miss Lucy 5152	Thomas Miss Lucy 3050	+52
#TC Total 410	#Bon View New Design 208	<b>REA</b>
SSR Beauty 4283	+TC Erica Eileen 2047	+66
*17785674	#Connealy Lead On	<b>FAT</b>
SSR Beauty 5428	+VDAR Beauty 9542	+016

CED	BEPD	WEPD	YEPD	MILK	\$M	\$W	\$F	\$G	\$B	\$C
+6	+1.9	+65	+114	+19	+42	+59	+93	+48	+141	+225

- Consigned by: Sugar Springs Ranch, Lincoln, AR
- Top 10% WW & YW, Top 15% CW & \$F, Top 20% \$B
- An excellent young Absolute daughter out of a Total dam back to Lead On. Strong growth and maternal here. Her bull calf proves her production ability.
- Bred AI to EXAR Monumental - safe in calf and due 3-3-20.
- Bull Calf tested clean and has a CED of 11 and weaning weight EPD of +65.
- Lot 121A Sex: Bull DOB: 3-5-19 Sire: 3F Epic 4631

# 122 SSR ERICA ABSOLUTE 2068

Birth Date: 10-14-2018 Cow 19452815 Tattoo: 2068

#*SAV Final Answer 0035 [RDF]	#Sitz Traveler 8180	<b>CW</b>
KCF Bennett Absolute	SAV Emulous 8145	+34
#*16430795	#+Wulffs Ext 6106	<b>MARB</b>
Thomas Miss Lucy 5152	Thomas Miss Lucy 3050	+73
ANGUS GS	#*SAV Final Answer 0035 [RDF]	<b>REA</b>
#SAV Pioneer 7301	SAV Blackbird 5297	+36
SSR Erica 4206	#+SAV Bismarck 5682 [RDF]	<b>FAT</b>
18885565	+SSR Limestone Erica R242	+084

CED	BEPD	WEPD	YEPD	MILK	\$M	\$W	\$F	\$G	\$B	\$C
+17	-2.2	+54	+94	+32	+77	+75	+78	+47	+125	+239

- Consigned by: Sugar Springs Ranch, Lincoln, AR
- Top 1% CED, Top 3% BW, Top 10% \$W, Top 20% \$M
- A true calving ease female!
- Great combination of genetics here. She has Absolute, Pioneer and Bismarck on her three generation pedigree.
- Sells Open.



KCF Bennett Absolute - Sire of Lots 121 & 122

# 123 SSR JULIA NAVIGATOR 5808

Birth Date: 11-7-2018 Cow \*19454181 Tattoo: 5808

#*Connealy Black Granite [RDF]	#*Connealy Consensus 7229	<b>CW</b>
Thomas Navigator 5771	#Eura Elga of Conanga 9109	+45
*18368554	#SAV Net Worth 4200	<b>MARB</b>
ANGUS GS	+*Thomas Ester 8628	+47
#+SAV Bismarck 5682 [RDF]	+*GAR Grid Maker	<b>REA</b>
SSR Julia 6580	SAV Abigale 0451	+54
16886447	#Sitz Alliance 6595	<b>FAT</b>
+SSR Julia 658	Westwind Julia DJH 650	+010

CED	BEPD	WEPD	YEPD	MILK	\$M	\$W	\$F	\$G	\$B	\$C
+8	+2.6	+62	+111	+33	+51	+69	+94	+44	+138	+230

- Consigned by: Sugar Springs Ranch, Lincoln, AR
- Top 15% \$W, Top 20% YW & \$F, Top 25% WW
- A daughter of Thomas Navigator, a bull noted for his blend of phenotype, carcass merit and performance.
- The dam is this attractive heifer that combines Bismarck and Alliance.
- Sells Open.

# 124 SSR ERICA NAVIGATOR 0268

Birth Date: 11-17-2018 Cow \*19454179 Tattoo: 0268

#*Connealy Black Granite [RDF]	#*Connealy Consensus 7229	<b>CW</b>
Thomas Navigator 5771	#Eura Elga of Conanga 9109	+44
*18368554	#SAV Net Worth 4200	<b>MARB</b>
ANGUS GS	+*Thomas Ester 8628	+60
+*Woodside	#*Connealy Consensus 7229	<b>REA</b>
SSR Erica 2026	+*Rita 5F56 of 1198 FD	+46
18885569	#Connealy Right Answer 746	<b>FAT</b>
SSR Erica 4202	SSR Erica 2420	+027

CED	BEPD	WEPD	YEPD	MILK	\$M	\$W	\$F	\$G	\$B	\$C
+10	+9	+56	+97	+34	+52	+69	+99	+48	+147	+243

- Consigned by: Sugar Springs Ranch, Lincoln, AR
- Top 15% \$W & \$F, Top 20% CED, Top 25% \$B
- This Navigator daughter stems from the good Erica cow family at Sugar Springs Ranch.
- This is one that we are sure you will like.
- Sells Open.

# 125 SSR BEAUTY DISCOVERY 8168

Birth Date: 11-26-2018 Cow 19458808 Tattoo: 8168

*VAR Discovery 2240 [RDF]	#*AAR Ten X 7008 SA	<b>CW</b>
SSR Discovery 2527	+*Deer Valley Rita 0308	+41
*18782754	#Sitz Upward 307R	<b>MARB</b>
*SSR Beauty 4252	SSR Beauty 5425	+57
+*Woodside	#*Connealy Consensus 7229	<b>REA</b>
SSR Beauty 2816	+*Rita 5F56 of 1198 FD	+59
*18885568	+VDAR Right Time 3045	<b>FAT</b>
SSR Beauty 4281	SSR Beauty 5428	+006

CED	BEPD	WEPD	YEPD	MILK	\$M	\$W	\$F	\$G	\$B	\$C
+2	+3.1	+51	+93	+25	+64	+51	+87	+51	+138	+243

- Consigned by: Sugar Springs Ranch, Lincoln, AR
- 8168 is a deep bodied Discovery daughter. Discovery won his division while a successful show bull.
- Her dam is from the great Sugar Springs Beauty family
- Sells Open.

# 126 SSR LADY FATE 0258

Birth Date: 12-5-2018 Cow 19456186 Tattoo: 0258

#*SydGen Trust 6228	*SCR Promise 4042	<b>CW</b>
SydGen FATE 2800	+SydGen Forever Lady 4413	+56
*17521423	#SydGen Contact	<b>MARB</b>
+SydGen Heroine 9808	#DAAR Heroine LT 108	+29
ANGUS GS	#*Connealy Onward	<b>REA</b>
#Sitz Upward 307R	Sitz Henrietta Pride 81M	+78
SSR Lady 3025	#Connealy Right Answer 746	<b>FAT</b>
18469106	+SSR Sinclair Lady 3330	+025

CED	BEPD	WEPD	YEPD	MILK	\$M	\$W	\$F	\$G	\$B	\$C
+2	+1.5	+64	+104	+33	+54	+80	+96	+37	+134	+228

- Consigned by: Sugar Springs Ranch, Lincoln, AR
- Top 4% \$W, Top 15% CW, Top 20% WW, RE & \$F
- SydGen Fate was the highlight of the November 2013 Sale when he became the top selling bull in SydGen history where 2/3 interest and full possession brought \$113,000.
- Her dam is a powerful Upward daughter.
- Sells Open.



## **“A Special Word of Appreciation to Our March 2019 Buyers”**

**3M Angus**, Willow Springs, MO

**Adams Cattle**, Lonoke, AR

**Kyle Baker**, Tuscaloosa, AL

**Glen Ballard**, Cave City, AR

**Bottomland Angus**, Portia, AR

**Katie Boyd**, Carlisle, AR

**Bradford Farm**, Bee Branch, AR

**Brockinton Cattle Company**, Sherwood, AR

**Robert Brockway**, Cave City, AR

**Camp Town Angus**, Paragould, AR

**Carson Farm, LLC**, Coldwater, MS

**Castera Farms**, Romance, AR

**Circle D Farms**, Concord, AR

**Circle S Cattle**, Louin, MS

**Copeland Angus Ranch**, Paragould, AR

**D3 Cattle Company, LLC**, Portia, AR

**Marsh Davis**, Cherokee Village, AR

**Eaves Land & Cattle**, Truman, AR

**Walter Enright**, Nebo, KY

**Doug Foster**, Caulfield, MO

**Fulper Angus Farm**, Booneville, MS

**Michael Galloway**, Prim, AR

**Harris Cattle Farms**, Paragould, AR

**Hickory Hill Angus**, West Plains, MO

**Hill Angus**, Paragould, AR

**Chuck Holder**, Bay Springs, MS

**Jason Jackson**, Mammoth Springs, AR

**Tim Johnson**, Jonesboro, AR

**Stacy Jones**, Poughkeepsie, AR

**Tim Jones**, Batesville, AR

**James Key**, Dardnelle, AR

**KLMNO Farm, LLC**, Sidney, AR

**Callee Knotts**, Soso, MS

**Craig Layes**, Scranton, AR

**Travis Lipsey**, Piggott, AR

**Steve Long**, Pleasant Ridge, AR

**Benny Lueker**, Lafe, AR

**Dale Marriott**, Pocahontas, AR

**Martin Farms**, Timbo, AR

**McClure Farms LLC**, Perryville, MO

**David Middleton**, Des Arc, AR

**Keith Mikel**, Paragould, AR

**Russell Mooney**, Thayer, MO

**Dennis Newberry**, Gassville, AR

**Gary Penn**, Lynn, AR

**Doyle Ragland**, Marshall, AR

**Garrett Sikes**, Viola, AR

**James Smith**, Gatewood, MO

**Jordan Smith**, Edgemont, AR

**Charlotte Smith**, Imoden, AR

**Dickie Smith**, Black Rock, AR

**Speer Farms**, Marmaduke, AR

**Boyd Spencer**, Caulfield, MO

**Mitchel Stevens**, Clarkridge, AR

**Amos Stoltzfus**, Drasco, AR

**Robert Taylor**, Boliver, TN

**Cutter Thornton**, Ward, AR

**Roper Thornton**, Ward, AR

**Dally Sue Thornton**, Ward, AR

**Rob Thornton**, Carlisle, AR

**Twisted V Farms**, Imoden, AR

**Jailee Tyson**, Mammoth Springs, AR

**Wall Street Cattle**, Fort Myers, FL

**H C Wallace**, Bee Branch, AR

**Kody West**, Pangburn, AR

**Jacob Wood**, Conway, AR


**Wyatt Farms**, Batesville, AR



# Northeast Arkansas Angus Association • Membership List

**Chad Agee**, Marmaduke, AR  
**Thomas Asher**, Pomona, MO  
**Glen Ballard**, Cave City, AR  
**Jeff Barnett**, Hardy, AR  
**Ricky Barry**, Corinth, MS  
**David L. Billingsley, Jr.**, Keithville, LA  
**Ruth Bonds**, Mountain View, AR  
**Toby Bradfield**, Portageville, MO  
**Dwayne Brannon**, Elsinsore, MO  
**Jason Briley**, Cave City, AR  
**Robert Brockway**, Cave City, AR  
**Terry M. Brown**, Leslie, AR  
**Patricia Burge**, West Plains, MO  
**Britt Camp**, Paragould, AR  
**Mark Castera**, Romance, AR  
**Hulen Cobb**, Paragould, AR  
**Joe Corbin**, Tecumseh, MO  
**Lyn Cotter**, Henderson, AR  
**Oscar Crofford**, Melbourne, AR  
**Jerry Cross**, Paragould, AR  
**William Davis**, Piggott, AR  
**William G. "Bill" Davis**, Concord, AR  
**Brian Davis**, Mammoth Springs, AR  
**Margaret Davis**, Concord, AR  
**Rachel Davis**, Mammoth Springs, AR  
**Trisha Davis**, Mammoth Springs, AR  
**Vicky DeClerk**, Pocahontas, AR  
**Evan Doyle**, Portia, AR  
**Tim Doyle**, Portia, AR  
**Luke Foster**, Paragould, AR  
**Stan Foster**, Paragould, AR  
**Chris Fulper**, Booneville, MS  
**Charles Godwin**, Pontiac, MO  
**Richie Gray**, Dardanelle, AR  
**Jerry L Hall**, Damascus, AR  
**Sam Haley**, Quitman, AR  
**Brandon Harris**, Paragould, AR  
**Preston Helms**, Drasco, AR  
**Larry Hensley**, Caulfield, MO  
**Mike Higginbotham**, Collierville, TN  
**Harrie Leigh Hill**, Paragould, AR  
**Tommy R. Hill**, Paragould, AR  
**Chuck Holder**, Bay Springs, MS  
**Mike Holland**, Imboden, AR  
**Tom Huls**, Lincoln, AR  
**Shirley A. Jautz**, Pomona, MO  
**John D. Johnson**, Pocahontas, AR  
**Tom Jones**, Little Rock, AR  
**Emma Jumper**, Paragould, AR  
**Tommy Jumper**, Paragould, AR  
**Isaac Jumper**, DVM, Starkville, MS  
**Glen Kerlin**, Batesville, AR  
**Ronnie Koch**, North Little Rock, AR  
**Michael Lance**, Poplar Bluff, MO  
**Charlene Lewis**, Carlisle, AR  
**Jarod Long**, Fayette, AL  
**Steve Long**, Pleasant Plains, AR  
**Stephen Mahan**, Center Ridge, AR  
**Becky March**, Doniphan, MO  
**Wayne Marquis**, Poplar Bluff, MO  
**Jason Martin**, Paragould, AR  
**Bill Maxwell**, Black Rock, AR

**Mike Mayo**, Little Rock, AR  
**Garry McBride**, Bakersfield, MO  
**Holly Meyer**, Koshkonong, MO  
**David Montgomery**, Willow Springs, MO  
**Eric Newberry**, Paragould, AR  
**Haelea Osborn**, Concord, AR  
**Michael Parnell**, Yellville, AR  
**Rondle Parnell**, Searcy, AR  
**Gary & Robbie Powell**, Mantachie, MS  
**Doyle Ragland**, Marshall, AR  
**Truman Redwine**, Maynard, AR  
**Brian & Elizabeth Roper**, Fox, AR  
**Mark Satterfield**, Northfork, AR  
**Rondle Parnell**, Searcy, AR  
**Jarvene Shackelford**, Ripley, MS  
**Gene Shelton**, Scotland, AR  
**Charles "Buddy" Smith**, Paragould, AR  
**Charlotte Smith**, Imboden, AR  
**Dickie Smith**, Black Rock, AR  
**Jeffery Smith**, Koshkonong, MO  
**Kelly Smith**, West Plains, MO  
**Wayne Smith**, Louin, MS  
**Greg Spaunhorst**, Paragould, AR  
**Christina Spencer**, Powhatan, AR  
**Ron South**, Gilmer, TX  
**Stacy Speer**, Marmaduke, AR  
**Joe Spradlin**, Bald Knob, AR  
**Robert Staker**, Quitman, AR  
**Mark Satterfield**, Northfork, AR  
**Joe C Stephens**, Kenton, TN  
**Cody Stubblefield**, New Albany, MS  
**Dustin Tackett**, Dover, AR  
**Hayden Taylor**, Center Ridge, AR  
**Faith Cheryl Taylor**, Clinton, AR  
**Lester Taylor**, Mt. Pleasant, AR  
**Pam Taylor**, Mt. Pleasant, AR  
**Nick Thomas**, Williston, TN  
**Bob & Kim Thornton**, Ward, AR  
**Doug Thornton**, Carlisle, AR  
**Rob Thornton**, Carlisle, AR  
**Lyndal Turner**, Pomona, MO  
**Theodore "Ted" Warren**, Harrison, AR  
**Billy G. White**, Huron, TN  
**Rex Whitfield**, Pineville, AR  
**Scott Wingert**, Rose Bud, AR  
**Amye Wininger**, Mason, TN  
**Charles Yancey**, Horseshoe Bend, AR

Northeast Arkansas Angus Association
 www.neaaa.org

Membership Application

Name \_\_\_\_\_

Spouse Name \_\_\_\_\_

Farm Name \_\_\_\_\_

Address \_\_\_\_\_

City \_\_\_\_\_

State \_\_\_\_\_

Zip \_\_\_\_\_

Phone \_\_\_\_\_

E-mail Address \_\_\_\_\_

Membership Fees: \$25

Send Application To: Bill Maxwell • P.O. Box 125, Black Rock, AR 72415





**American Livestock Brokers**

Jarvene Shackelford, Auctioneer #573  
Office: 662-837-6742 • Mobile: 662-837-1776  
E-mail: alb@albauction.com  
www.albauction.com

Dear Cattle Folks,

Since 1991, it has been a true honor for Pat and me to work with this outstanding association from the very beginning. The quality of Angus offered here at the Northeast Arkansas Angus Association Sales have consistently improved over the years, as has the growth of this unique group of Angus enthusiasts. It has been a tremendous pleasure for American Livestock Brokers to work as Sale Manager for the Northeast Arkansas Angus Association over the past 28 years. This will be the **55th Sale** we have managed at this facility for this Association.

The leadership of this association has proven, by historical records, to be guided by decisions that work for progressive growth for the best Angus marketing system for you. Rules put in place for consignments allowed the buyers more guarantees that this is just **the place to find the top replacement females and herd bull ready to enhance your program bringing you more net dollars.**

Notice the number of great "Angus Breeders" that are members of this association. Also, pay attention to the NEW Angus folks that get started in this tremendous business with their first purchases right here in Charlotte and then go on to become a member of this association. That speaks volumes. When you have a success story – who does not want to be a part of it? Not only will you find this group of membership active - you will find them at meetings planning for the future where their vote does count - you will find them promoting the two annual sales – you will find them working around the sale facility. These people not only promote their individual consignment but selflessly work equally hard for their fellow consignors ensuring the overall success of the sale. Yes, this is a pretty outstanding group and I expect this A-team to continue to build and better itself guaranteeing you, the repeat or the new Angus buyer, the place to invest in the **Angus Future.**

I would be remiss if I did not commend the Charlotte Stockyard with a new name and improved facility. Cattlemen's Livestock Exchange, same location, has made changes for growth and are making plans for even more improvements for the future. This is a real promise for a shining star for the future for cattlemen.

Pleased review this sale book, check out the stats and genetics on individuals and determine which ones will work improvement in your program and then make plans to join us on November 16, 2019 for a real Angus celebration.

If I or a consignor or an officer may assist you in any capacity, do not hesitate to contact any of us.

Sincerely,  
Jarvene Shackelford





MASSEY FERGUSON



# IF YOU'VE GOT THE ACREAGE, WE'VE GOT THE TRACTOR.

Maybe you grew up on a farm. Or it took you a lifetime to get there. Either way, to make it work right, you need just the right tractor: a Global Series tractor from Massey Ferguson. Everything about these machines has been designed and engineered to help you get the job done right, whatever that job is. Now, and as your needs evolve in the years ahead. Check out the Massey Ferguson® Global Series today!

[masseyferguson.us](http://masseyferguson.us)

## BEE BRANCH/CLINTON

9261 Hwy 65 S  
501-745-4660



**grass roots**  
EQUIPMENT & OUTDOORS

## SOUTHSIDE BATESVILLE

925 Batesville Blvd.  
870-569-8086

[grassrootsequipment.com](http://grassrootsequipment.com)



©2019 AGCO Corporation. Massey Ferguson is a worldwide brand of AGCO Corporation. AGCO and Massey Ferguson are trademarks of AGCO. All rights reserved.





American Livestock Brokers  
 Jarvene Shackelford, Auctioneer #573  
 20971 Hwy. 4 East • Ripley, MS 38663  
 Office: 662-837-6742 • Mobile: 662-837-1776  
 E-mail: alb@albauction.com  
 www.albauction.com

PSRT  
 FIRST CLASS  
 U.S. POSTAGE  
**PAID**  
 St. Joseph, MO  
 Permit #2017



[www.neaaa.org](http://www.neaaa.org)

Noon • Saturday

**November 16, 2019**

**FALL SALE**



**SELLING 126 LOTS**  
**38 Bulls | 88 Females**

*Helenie St. Blanc Kiani  
 Photography*