

Assembly Drawing and Bill of Materials

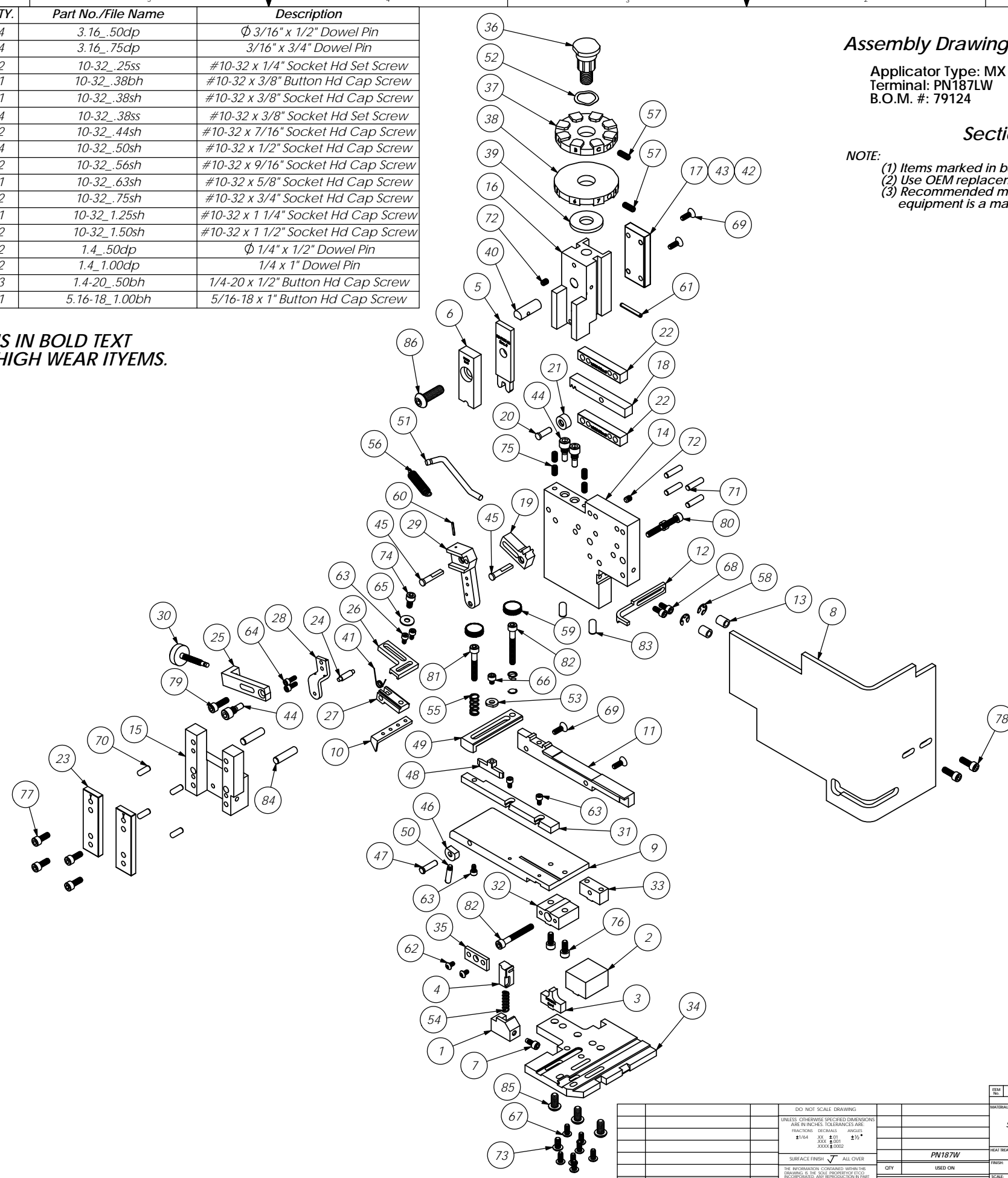
Applicator Type: MX Side
Terminal: PN187LW
B.O.M. #: 79124

Section 5

NOTE:
(1) Items marked in bold text are high wear items.
(2) Use OEM replacement tooling only.
(3) Recommended machine speed for automatic equipment is a maximum of 3500 parts per hour.

Item	Part Code	QTY.	Part No./File Name	Description	Item	Part Code	QTY.	Part No./File Name	Description
1	74440	1	8-3003	Front Cut-off Pad Retainer	70	63158	4	3.16_.50dp	Φ 3/16" x 1/2" Dowel Pin
2	60771	1	8A-PNW-M	Die Block	71	63470	4	3.16_.75dp	3/16" x 3/4" Dowel Pin
3	60132	1	9-PNW-M	Anvil	72	63054	2	10-32_.25ss	#10-32 x 1/4" Socket Hd Set Screw
4	60133	1	12-PNW-M	Cut-off Pad	73	78993	1	10-32_.38bh	#10-32 x 3/8" Button Hd Cap Screw
5	60140	1	13-PNW-M	Wire Rolling Tool	74	70110	1	10-32_.38sh	#10-32 x 3/8" Socket Hd Cap Screw
6	74446	1	15-3003	Cut-off Pad Driver	75	71626	4	10-32_.38ss	#10-32 x 3/8" Socket Hd Set Screw
7	77265	1	26-3088	Locking Screw	76	63165	2	10-32_.44sh	#10-32 x 7/16" Socket Hd Cap Screw
8	72271	1	199-3005-2	Guard	77	63056	4	10-32_.50sh	#10-32 x 1/2" Socket Hd Cap Screw
9	60795	1	250-PNW-M	Feed Plate	78		2	10-32_.56sh	#10-32 x 9/16" Socket Hd Cap Screw
10	76484	1	303-3033	Feed Finger	79	70293	1	10-32_.63sh	#10-32 x 5/8" Socket Hd Cap Screw
11	61278	1	500-PNW-M	Rear Guide Rail	80	63532	2	10-32_.75sh	#10-32 x 3/4" Socket Hd Cap Screw
12	75861	1	1600-3019	Stripper / Wire Stop	81	77396	1	10-32_1.25sh	#10-32 x 1 1/4" Socket Hd Cap Screw
13	74491	2	GS-375	Guard Spacer	82	63826	2	10-32_1.50sh	#10-32 x 1 1/2" Socket Hd Cap Screw
14	71029	1	MX2A-S	Mounting Frame	83	63827	2	1.4_.50dp	Φ 1/4" x 1/2" Dowel Pin
15	71030	1	MX2B-S	Plunger Frame	84	63510	2	1.4_1.00dp	1/4 x 1" Dowel Pin
16	74343	1	MX3	Ram	85	63632	3	1.4-20_.50bh	1/4-20 x 1/2" Button Hd Cap Screw
17	74344	1	MX4-S	Cam (1 5/8" Up Stroke)	86	63055	1	5.16-18_1.00bh	5/16-18 x 1" Button Hd Cap Screw
18	74438	1	MX5-S	Cam Rack					
19	74346	1	MX6	Gear Arm					
20	74347	1	MX7	Cam Pin					
21	74350	1	MX8	Cam Roller					
22	74351	2	MX10-S	Rack Pad					
23	74352	2	MX11	Gib					
24	74356	1	MX12	Feed Finger Pivot Pin					
25	74360	1	MX13	Adjusting Bar					
26	74361	1	MX14-S	Feed Finger Arm					
27	74362	1	MX15-S	Feed Finger Guide					
28	74364	1	MX16	Retainer					
29	74371	1	MX18-S	Swing Arm					
30	74376	1	MX25	Stroke Adjustment Screw					
31	74840	1	MX28-1-S	Front Guide Rail					
32	74384	1	MX29-S	Slide Support					
33	74388	1	MX30-S	Support Anchor					
34	64078	1	MX31-PNW	Baseplate					
35	74390	1	MX32-S	Support Cover					
36	74407	1	MX33	Mounting Post					
37	66603	1	MX34-PNW	Wire Crimp Dial					
38	74409	1	MX35	Insulation Dial					
39	74411	1	MX36	Dial Spacer					
40	74412	1	MX44	Locating Dowel					
41	74415	1	MX45-S	Feed Finger Spring					
42	74416	1	MX47-S	Cam (1 5/8" Down stroke)					
43	74417	1	MX48-S	Cam (1 1/8" Up Stroke)					
44	74419	3	MX50	Safety Pivot Pin					
45	74420	2	MX52	Pivot Pin					
46	74425	1	MX84-S	Brake Cam					
47	74426	1	MX85-S	Cam Pivot Pin					
48	74428	1	MX86-S	Brake Shoe					
49	61228	1	MX87-PNW-M	Lift Arm					
50	74430	1	MX88-S	Lever					
51	61285	1	MX90-2-S	Spring Bracket					
52	72310	1	MX104	Wave Disc Spring					
53	78984	1	MX424-ITD-R	#8 Hardened Washer					
54	74578	1	4-034-875	Spring					
55	77322	2	LC-045E-10-M	Spring					
56	74611	1	LE-037CD-6	Extension Spring					
57	70739	2	McMaster-Carr #3126A53	Spring Plunger					
58	72069	2	McMaster Carr #98407A122	#10 E-Style Retaining Ring					
59	73785	2	SPI 99-602-5	#10 Black Knurled Knob					
60		1	1.16_.50rp	1/16" x 1/2" Roll Pin					
61	62040	1	1.8_1.00rp	1/8" x 1" Roll Pin					
62	63792	2	6-32_.25bh	#6-32 x 1/4" Button Hd Cap Screw					
63	63207	5	6-32_.25sh	#6-32 x 1/4" Socket Hd Cap Screw					
64	63209	2	6-32_.38sh	#6-32 x 3/8" Socket Hd Cap Screw					
65	63210	1	8fw	#8 Flatwasher					
66	60265	1	8-32_.19sh	#8-32 x 3/16" Socket Hd Cap Screw					
67	61472	7	8-32_.38bh	#8-32 x 3/8" Button Hd Cap Screw					
68	63161	2	8-32_.38sh	#8-32 x 3/8" Socket Hd Cap Screw					
69	63052	4	8-32_.50fh	#8-32 x 1/2" Flat Hd Cap Screw					

NOTE: ITEMS IN BOLD TEXT ARE HIGH WEAR ITYEMS.



REV	REVISION	BY/DATE	APP	QTY	USED ON	SCALE	CAD FILE	CHECKED BY	DATE	DRAWN BY	DATE	REV
1												
2												

ITEM NO.	PART NO.	DESCRIPTION	MATERIAL SPECIFICATION	QTY. REQD.
1	74440	Front Cut-off Pad Retainer		1
2	60771	Die Block		1
3	60132	Anvil		1
4	60133	Cut-off Pad		1
5	60140	Wire Rolling Tool		1
6	74446	Cut-off Pad Driver		1
7	77265	Locking Screw		1
8	72271	Guard		1
9	60795	Feed Plate		1
10	76484	Feed Finger		1
11	61278	Rear Guide Rail		1
12	75861	Stripper / Wire Stop		1
13	74491	Guard Spacer		2
14	71029	Mounting Frame		1
15	71030	Plunger Frame		1
16	74343	Ram		1
17	74344	Cam (1 5/8" Up Stroke)		1
18	74438	Cam Rack		1
19	74346	Gear Arm		1
20	74347	Cam Pin		1
21	74350	Cam Roller		1
22	74351	Rack Pad		2
23	74352	Gib		2
24	74356	Feed Finger Pivot Pin		1
25	74360	Adjusting Bar		1
26	74361	Feed Finger Arm		1
27	74362	Feed Finger Guide		1
28	74364	Retainer		1
29	74371	Swing Arm		1
30	74376	Stroke Adjustment Screw		1
31	74840	Front Guide Rail		1
32	74384	Slide Support		1
33	74388	Support Anchor		1
34	64078	Baseplate		1
35	74390	Support Cover		1
36	74407	Mounting Post		1
37	66603	Wire Crimp Dial		1
38	74409	Insulation Dial		1
39	74411	Dial Spacer		1
40	74412	Locating Dowel		1
41	74415	Feed Finger Spring		1
42	74416	Cam (1 5/8" Down stroke)		1
43	74417	Cam (1 1/8" Up Stroke)		1
44	74419	Safety Pivot Pin		3
45	74420	Pivot Pin		2
46	74425	Brake Cam		1
47	74426	Cam Pivot Pin		1
48	74428	Brake Shoe		1
49	61228	Lift Arm		1
50	74430	Lever		1
51	61285	Spring Bracket		1
52	72310	Wave Disc Spring		1
53	78984	#8 Hardened Washer		1
54	74578	Spring		1
55	77322	Spring		2
56	74611	Extension Spring		1
57	70739	Spring Plunger		2
58	72069	#10 E-Style Retaining Ring		2
59	73785	#10 Black Knurled Knob		2
60		1/16" x 1/2" Roll Pin		1
61	62040	1/8" x 1" Roll Pin		1
62	63792	#6-32 x 1/4" Button Hd Cap Screw		2
63	63207	#6-32 x 1/4" Socket Hd Cap Screw		5
64	63209	#6-32 x 3/8" Socket Hd Cap Screw		2
65	63210	#8 Flatwasher		1
66	60265	#8-32 x 3/16" Socket Hd Cap Screw		1
67	61472	#8-32 x 3/8" Button Hd Cap Screw		7
68	63161	#8-32 x 3/8" Socket Hd Cap Screw		2
69	63052	#8-32 x 1/2" Flat Hd Cap Screw		4