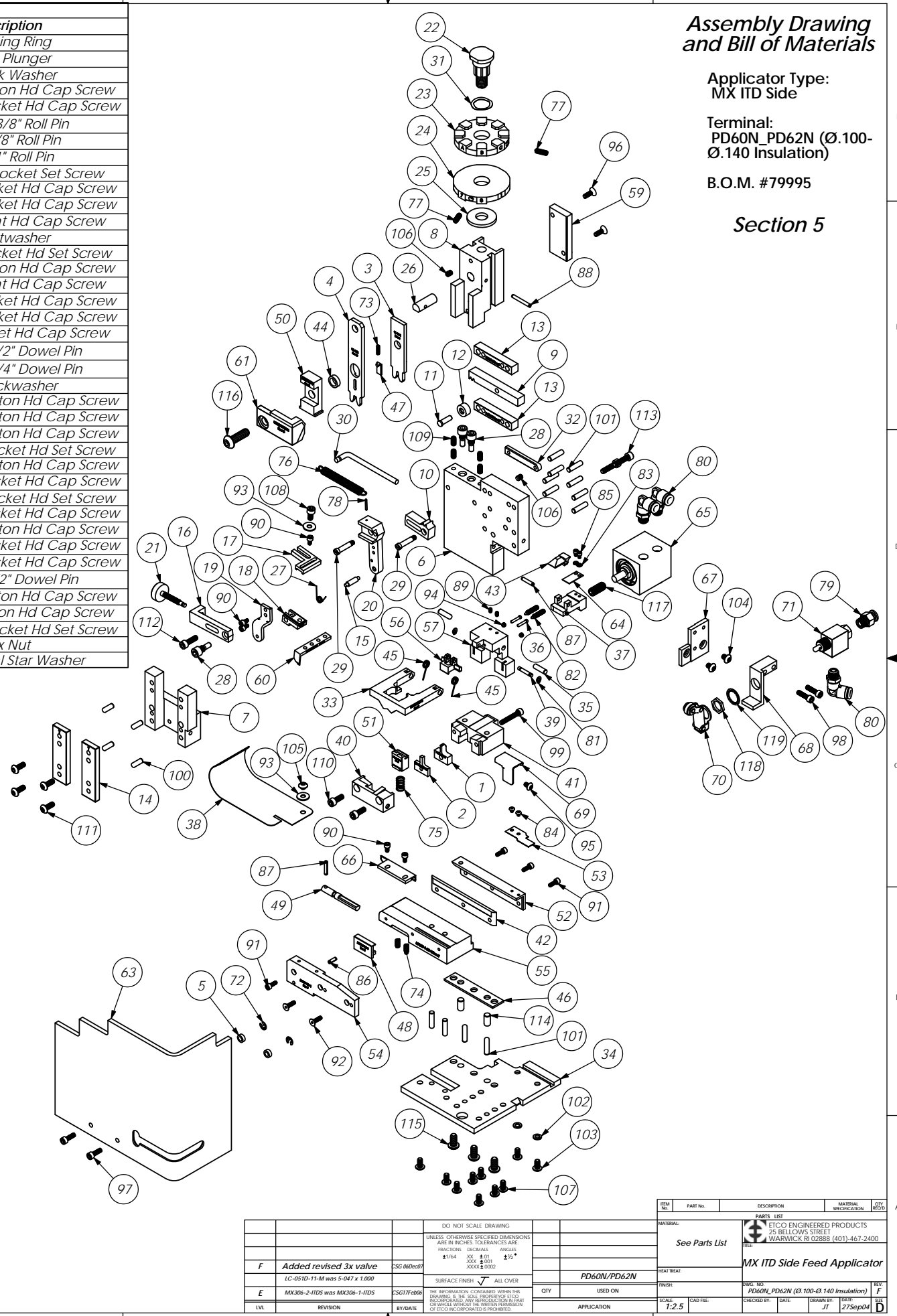


Parts List				
Item	Part Code	QTY.	Part No./File Name	Description
1	76652	1	9-4001	Wire Anvil
2	76651	1	9A-4001	Insulation Anvil
3	76655	1	13-4001	Wire Rolling Tool
4	76559	1	14-4001	Insulation Rolling Tool
5	73888	2	GS-125	Guard Spacer
6	71494	1	MX2A-S-1	Mounting Frame
7	71030	1	MX2B-S	Plunger Frame
8	74343	1	MX3	Ram
9	74438	1	MX5-S	Cam Rack
10	74346	1	MX6-1	Gear Arm
11	74347	1	MX7	Cam Pin
12	74350	1	MX8	Cam Roller
13	74351	2	MX10-S	Rack Pad
14	74352	2	MX11	Gib
15	74356	1	MX12	Feed Finger Pivot Pin
16	74360	1	MX13	Adjusting Bar
17	76868	1	MX14-1-S	Feed Finger Arm
18	76874	1	MX15-1-S	Feed Finger Guide
19	74364	1	MX16	Retainer
20	71495	1	MX18-S-1	Swing Arm
21	74376	1	MX25	Stroke Adjustment Screw
22	74407	1	MX33	Mounting Post
23	78937	1	MX34-H	Wire Crimp Dial
24	74409	1	MX35	Insulation Dial
25	74411	1	MX36	Dial Spacer
26	74412	1	MX44	Locating Dowel
27	74415	1	MX45-S	Feed Finger Spring
28	74419	3	MX50	Safety Pivot Pin
29	71493	2	MX52-S-1	Pivot Pin
30	74614	1	MX90-S	Spring Bracket
31	72310	1	MX104	Wave Disc Spring
32	71678	1	MX105-S	Pivot Pin Plate
33	76946	1	MX301-3-ITD-S	Latching Gate
34	72261	1	MX302-1-ITD-S	Base Plate
35	76563	2	MX304-ITD-S	Hinge Pin
36	76564	2	MX305-ITD-S	Pin
37	78613	1	MX306-2-ITD-S	Insulation Pusher
38	76566	1	MX307-ITD-S	Stock Chute
39	76567	1	MX308-ITD-S	Latch Pivot Pin
40	78936	1	MX309-4-ITD-S	Cut-off Keeper
41	72257	1	MX310-1-ITD-S	Die Holder
42	76571	1	MX312-ITD-S	Left Feed Shim (3/16" Terminal)
43	76573	1	MX314-ITD-S	Catch
44	76574	1	MX315-ITD-S	Insulation Tool Spacer
45	76575	2	MX316-ITD-S	Latch Spring
46	76576	1	MX317-ITD-S	Base Plate Spacer
47	76578	1	MX319-ITD-S	Knock off
48	76579	1	MX320-ITD-S	Brake
49	76580	1	MX321-ITD-S	Brake Actuator
50	76583	1	MX324-ITD-S	Cut-off Pad Pusher
51	78935	1	MX326-4-ITD-S	Cut-off Pad
52	76586	1	MX327-ITD-S	Left Feed Rail
53	76587	1	MX328-ITD-S	Hold Down Spring
54	76588	1	MX329-ITD-S	Right Feed Rail
55	78938	1	MX330-1-ITD-S	Feed Plate
56	76590	1	MX331-ITD-S	Latch (Automatic)
57	76591	1	MX332-ITD-S	Support
58	76593	1	MX334-ITD-S	Latch/Wire Stop
59	76608	1	MX335-ITD-S	Cam
60	76661	1	MX337-ITD-S	Feed Finger
61	70720	1	MX338-ITD-S	Arm Switch Cam (1 5/8" Stroke)
62	72233	1	MX338-1-ITD-S	Arm Switch Cam (1 1/8" Stroke)
63	70745	1	MX339-ITD-S	Guard
64	72260	1	MX344-1-ITD-S	Leaf Spring
65	72099	1	MX348-ITD-S	.550 Strike Slide Cylinder
66	72893	1	MX357-ITD-S	Bracket
67	78733	1	MX358-1-ITD-S	Valve Mounting Plate
68	61993	1	MX358-2-ITD-S	Valve Mounting Plate
69	78835	1	MX360-ITD-S	Scrap Retainer
70	72317	1	Clippard #12296	Cam Follower
71	72318	1	Clippard MJV-3	3-Way Valve
72	75083	2	Irving 3100-18	External Retaining Ring
73	72315	1	LC-022A-4	Compression Spring
74	78681	2	LC-029B-3-M	Compression Spring
75	78719	1	LC-051D-11-M	Compression Spring
76	74611	1	LE-037CD-6	Extension Spring
77	70739	2	McMaster-Carr #3126A53	Spring Plunger
78	74447	1	McMaster-Carr #98296A109	Expansion Pin (1/16 x 1/2")
79	73222	1	Pisco PC250-N1U	1/4" x 1/8" NPT Straight
80	72352	3	Pisco PL250-N1U	Ø1/4" x 1/8" NPT Elbow Fitting, White

Parts List				
Item	Part Code	QTY.	Part No./File Name	Description
81	63200	2	Truarc #5555-12	Retaining Ring
82	63201	2	Vlier #PH-51-P	Spring Plunger
83	63202	2	4lw	#4 Lock Washer
84	63203	2	4-40_.13bh	#4-40 x 1/8" Button Hd Cap Screw
85	63204	2	4-40_.16sh	#4-40 x 5/32" Socket Hd Cap Screw
86	63205	1	1.8_.38rp	Ø 1/8" x 3/8" Roll Pin
87	63053	2	1.8_.63rp	1/8" x 5/8" Roll Pin
88	62040	1	1.8_.100rp	1/8" x 1" Roll Pin
89	63206	2	5-40_.19ssf	#5-40 x 3/16" Socket Set Screw
90	63207	5	6-32_.25sh	#6-32 x 1/4" Socket Hd Cap Screw
91	63209	4	6-32_.38sh	#6-32 x 3/8" Socket Hd Cap Screw
92	63057	2	6-32_.50fh	#6-32 x 1/2" Flat Hd Cap Screw
93	63210	2	8fw	#8 Flatwasher
94	63211	2	8-32_.13ssf	#8-32 x 1/8" Socket Hd Set Screw
95	63212	1	8-32_.25bh	#8-32 x 1/4" Button Hd Cap Screw
96	63052	2	8-32_.50fh	#8-32 x 1/2" Flat Hd Cap Screw
97	63164	2	8-32_.50sh	#8-32 x 1/2" Socket Hd Cap Screw
98	63162	2	8-32_.63sh	#8-32 x 3/8" Socket Hd Cap Screw
99	63213	1	8-32_1.00sh	#8-32 x 1" Socket Hd Cap Screw
100	63158	4	3.16_.50dp	Ø 3/16" x 1/2" Dowel Pin
101	63470	12	3.16_.75dp	Ø 3/16" x 3/4" Dowel Pin
102	78517	2	10lw	#10 Lockwasher
103	63531	2	10-24_.38bh	#10-24 x 3/8" Button Hd Cap Screw
104	78687	2	10-32_.25bh	#10-32 x 1/4" Button Hd Cap Screw
105	78327	1	10-32_.13bh	#10-32 x 1/8" Button Hd Cap Screw
106	63054	2	10-32_.25ss	#10-32 x 1/4" Socket Hd Set Screw
107	78993	8	10-32_.38bh	#10-32 x 3/8" Button Hd Cap Screw
108	70110	1	10-32_.38sh	#10-32 x 3/8" Socket Hd Cap Screw
109		4	10-32_.38ssf	#10-32 x 3/8" Socket Hd Set Screw
110	63056	2	10-32_.50sh	#10-32 x 1/2" Socket Hd Cap Screw
111	76501	4	10-32_.50bh	#10-32 x 1/2" Button Hd Cap Screw
112	70293	1	10-32_.63sh	#10-32 x 5/8" Socket Hd Cap Screw
113	63532	2	10-32_.75sh	#10-32 x 3/4" Socket Hd Cap Screw
114	63827	2	1.4_.50dp	Ø 1/4" x 1/2" Dowel Pin
115	63632	3	1.4-20_.50bh	1/4-20 x 1/2" Button Hd Cap Screw
116	63055	1	5.16-18_1.00bh	5/16-18 x 1" Button Hd Cap Screw
117	71086	1	5.16-24_.75ssf	5/16-24 x 3/4" Socket Hd Set Screw
118		1	15.32_32 hex nut	Hex Nut
119		1	1.2isw	1/2" Internal Star Washer

NOTE: ITEMS MARKED IN BOLD TEXT ARE HIGH WEAR ITEMS

NOTE:
 (1) Items marked in bold text are high wear items.
 (2) Use OEM replacement tooling only.
 (3) Recommended machine speed for automatic equipment is a maximum of 3500 parts per hour.



Assembly Drawing and Bill of Materials

Applicator Type:
MX ITD Side

Terminal:
PD60N_PD62N (Ø.100-Ø.140 Insulation)

B.O.M. #79995

Section 5

REV	DESCRIPTION	DATE	BY	CHKD	APP
F	Added revised 3x valve				
E	MX306-2-ITDS was MX306-1-ITDS				
LVL	REVISION		BY/DATE		APP/DATE

DO NOT SCALE DRAWING	UNLESS OTHERWISE SPECIFIED DIMENSIONS ARE IN INCHES. TOLERANCES ARE FRACTIONAL DECIMALS ANGLES
±1/4	XX ±.01
±1/8	XX ±.005
±1/16	XX ±.002
±1/32	XX ±.001
±1/64	XX ±.0005
±1/128	XX ±.0002
±1/256	XX ±.0001
±1/512	XX ±.00005
±1/1024	XX ±.00002
±1/2048	XX ±.00001
±1/4096	XX ±.000005
±1/8192	XX ±.000002
±1/16384	XX ±.000001
±1/32768	XX ±.0000005
±1/65536	XX ±.0000002
±1/131072	XX ±.0000001
±1/262144	XX ±.00000005
±1/524288	XX ±.00000002
±1/1048576	XX ±.00000001
±1/2097152	XX ±.000000005
±1/4194304	XX ±.000000002
±1/8388608	XX ±.000000001
±1/16777216	XX ±.0000000005
±1/33554432	XX ±.0000000002
±1/67108864	XX ±.0000000001
±1/134217728	XX ±.00000000005
±1/268435456	XX ±.00000000002
±1/536870912	XX ±.00000000001
±1/1073741824	XX ±.000000000005
±1/2147483648	XX ±.000000000002
±1/4294967296	XX ±.000000000001
±1/8589934592	XX ±.0000000000005
±1/17179869184	XX ±.0000000000002
±1/34359738368	XX ±.0000000000001
±1/68719476736	XX ±.00000000000005
±1/137438953472	XX ±.00000000000002
±1/274877906944	XX ±.00000000000001
±1/549755813888	XX ±.000000000000005
±1/1099511627776	XX ±.000000000000002
±1/2199023255552	XX ±.000000000000001
±1/4398046511104	XX ±.0000000000000005
±1/8796093022208	XX ±.0000000000000002
±1/17592186444416	XX ±.0000000000000001
±1/35184372888832	XX ±.00000000000000005
±1/70368745777664	XX ±.00000000000000002
±1/14073749155328	XX ±.00000000000000001
±1/28147498310656	XX ±.000000000000000005
±1/56294996621312	XX ±.000000000000000002
±1/11258999322624	XX ±.000000000000000001
±1/22517998645248	XX ±.0000000000000000005
±1/45035997290496	XX ±.0000000000000000002
±1/90071994580992	XX ±.0000000000000000001
±1/180143989161984	XX ±.00000000000000000005
±1/360287978323968	XX ±.00000000000000000002
±1/720575956647936	XX ±.00000000000000000001
±1/1441151913295872	XX ±.000000000000000000005
±1/2882303826591744	XX ±.000000000000000000002
±1/5764607653183488	XX ±.000000000000000000001
±1/11529215306366976	XX ±.0000000000000000000005
±1/23058430612733952	XX ±.0000000000000000000002
±1/46116861225467904	XX ±.0000000000000000000001
±1/92233722450935808	XX ±.00000000000000000000005
±1/184467444901871616	XX ±.00000000000000000000002
±1/368934889803743232	XX ±.00000000000000000000001
±1/737869779607486464	XX ±.000000000000000000000005
±1/147573955921492928	XX ±.000000000000000000000002
±1/295147911842985856	XX ±.000000000000000000000001
±1/590295823685971712	XX ±.0000000000000000000000005
±1/1180591647371943424	XX ±.0000000000000000000000002
±1/2361183294743886848	XX ±.0000000000000000000000001
±1/4722366589487773696	XX ±.00000000000000000000000005
±1/9444733178975547392	XX ±.00000000000000000000000002
±1/18889466357951094784	XX ±.00000000000000000000000001
±1/37778932715902189568	XX ±.000000000000000000000000005
±1/75557865431804379136	XX ±.000000000000000000000000002
±1/151115730863608758272	XX ±.000000000000000000000000001
±1/302231461727217516544	XX ±.0000000000000000000000000005
±1/604462923454435033088	XX ±.0000000000000000000000000002
±1/12089258469088700716768	XX ±.0000000000000000000000000001
±1/24178516938177401433536	XX ±.00000000000000000000000000005
±1/48357033876354802867072	XX ±.00000000000000000000000000002
±1/96714067752709605734144	XX ±.00000000000000000000000000001
±1/193428135505419211468288	XX ±.000000000000000000000000000005
±1/386856271010838422936576	XX ±.000000000000000000000000000002
±1/773712542021676845873152	XX ±.000000000000000000000000000001
±1/1547425084043353691446304	XX ±.0000000000000000000000000000005
±1/3094850168086707382892608	XX ±.0000000000000000000000000000002
±1/6189700336173414765785216	