

FAQs

salair is used to relieve symptoms of asthma and other asthma-like conditions.

What is Salair Inhaler?

Salair Inhaler contains 100 mcg Salbutamol (as sulphate), an asthma medication that opens up the airways in your lungs.

What is Salair Inhaler used for?

Salair Inhaler is a “reliever” inhaler that is used to relieve symptoms of asthma and other asthma-like conditions such as coughing, chest tightness and wheezing.

Salair Inhaler is also used for prevention of asthma symptoms brought on by exercise or exposure to allergens, such as animal fur, pollen or household dust.



Salair Inhaler is used for the prevention and treatment of bronchospasm. Salair Inhaler provides short-acting (4-6 hours) bronchodilation with fast onset of action. It is suitable for long-term use in the relief and prevention of asthmatic symptoms, such as coughing, chest tightness and wheezing.

Salair is particularly valuable as rescue medication in mild, moderate or severe asthma.

SALAIR INHALER IS A PRESCRIPTION MEDICINE FOR ORAL INHALATION ONLY.

Our family of products for
asthma and COPD management.



salair.co.nz | rexmedical.co.nz

salair

salbutamol
reliever inhaler

The Reliever Inhaler

**Salair 100 mcg
200 doses**

salair - Fully-funded
Salbutamol pMDI*.



*pMDI - pressurised metered dose inhaler

rex

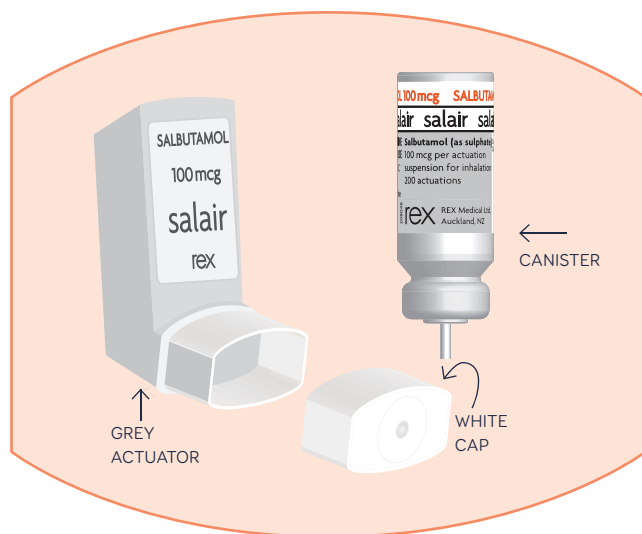
Does Salair Inhaler **work the same** as the reliever inhaler that I normally use?

Salair Inhaler contains Salbutamol (as sulphate) as an active medicine. Most reliever inhalers contain Salbutamol (as sulphate) as an active medicine.

If your previous reliever inhaler also uses Salbutamol (as sulphate), then Salair Inhaler can be prescribed to manage the same conditions.

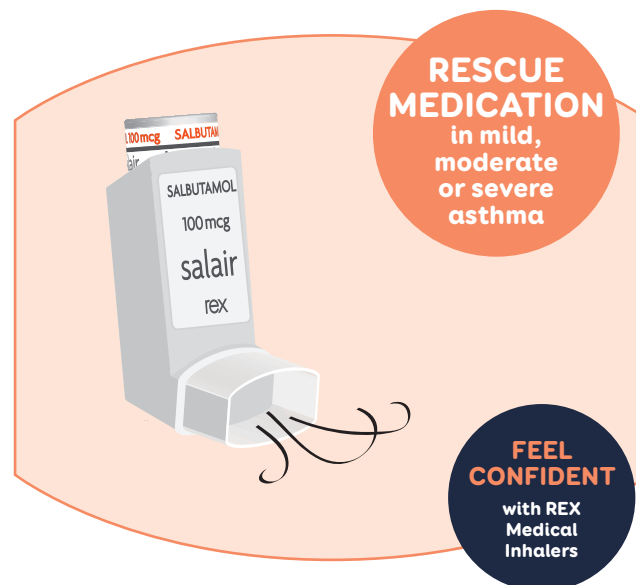
Does Salair Inhaler **look the same** as the reliever inhaler that I normally use?

Salair Inhaler looks different to other Salbutamol medication in blue inhalers which you may have used in the past. Salair Inhaler has a white cap and a grey body. The canister with the medicine in it has an orange, white, and grey label.



Will Salair Inhaler **taste the same** as the reliever inhaler that I normally use?

If you have previously used another inhaler, you might notice that the spray from Salair Inhaler tastes or feels different in your mouth, or that the inhaler sounds different when sprayed. This does not affect the way your inhaler works.



Is Salair Inhaler **right for me?**

Discuss your asthma symptoms with your doctor or pharmacist and ask whether Salair Inhaler is the appropriate choice for you. You can also visit www.salair.co.nz for more information.

Note: If there is an increased need to use Salair Inhaler more frequently then you should contact your doctor or nurse to check on the control of asthma with preventer and symptom controller inhalers.

FLOAIR INHALER with Dose Counter contains 50 mcg Fluticasone propionate, 125 mcg Fluticasone propionate, or 250 mcg Fluticasone propionate, **PRESCRIPTION MEDICINE**. **Indication:** Floair Inhaler is indicated for the long-term prevention of bronchospasm in adults or children with mild, moderate or severe asthma. Floair Inhaler is also indicated for adults or children with severe asthma dependent on oral corticosteroids for symptom control. Introduction of Floair Inhaler may allow the requirement for oral corticosteroids to be reduced or eliminated over time. **Dosage and Administration:** Floair Inhaler is for oral inhalation only. Please review the datasheet for the recommended doses of Floair Inhaler for children and adults. **Contraindications:** Floair Inhaler is contraindicated in individuals with hypersensitivity to any of its components. **Precautions/Warnings:** Floair Inhaler should not be used to treat acute asthma symptoms for which a fast and short-acting inhaled bronchodilator is required. **Patients should be advised to have their short-acting inhaled bronchodilator (e.g. Salbutamol) for the relief of acute asthma symptoms available at all times.** Treatment with Floair Inhaler should not be discontinued suddenly. **Please review the datasheet available at www.medsafe.govt.nz for full prescribing information.**

METEROL INHALER with Dose Counter contains 25 mcg Salmeterol (as xinafoate), **PRESCRIPTION MEDICINE**. **Indication:** Meterol Inhaler is indicated in the regular therapy of asthma and prevention of bronchospasm in individuals aged 4 years and older with reversible obstructive airway disease, including those with symptoms of nocturnal asthma, when used in combination with a long-term asthma prevention medicine such as an inhaled corticosteroid. Meterol Inhaler is also indicated for exercise-induced bronchospasm and in the regular maintenance treatment of bronchospasm associated with chronic obstructive pulmonary disease. **Dosage and administration:** Meterol Inhaler is for oral inhalation only. Please review the datasheet for the recommended doses of Meterol Inhaler for children and adults. **Contraindications:** Meterol Inhaler is contraindicated in individuals with hypersensitivity to any of its components (please review excipient list). **Precautions/Warnings:** Meterol Inhaler should not be used (and is not sufficient) as the first treatment for asthma. Meterol Inhaler is not a substitute for inhaled or oral corticosteroids. **Meterol Inhaler should not be used to treat acute asthma symptoms for which a fast and short-acting inhaled bronchodilator (e.g. Salbutamol) is required.** **Please review the datasheet available at www.medsafe.govt.nz for full prescribing information.**

REXAIR INHALER with Dose Counter contains 50 mcg Fluticasone propionate and 25 mcg Salmeterol; 125 mcg Fluticasone propionate and 25 mcg Salmeterol; or 250 mcg Fluticasone propionate and 25 mcg Salmeterol, **PRESCRIPTION MEDICINE**. **Indication:** Rexasair Inhaler is indicated for reversible obstructive airways disease (ROAD), or the regular therapy of asthma in children and adults, where a combination (inhaled corticosteroid and bronchodilator) is appropriate. Rexasair Inhaler is indicated in patients for the symptomatic treatment of COPD which is moderate to severe (i.e. <60% of normal FEV₁ predicted prior to bronchodilator usage) and despite bronchodilator therapy, have significant symptoms. **Dosage and Administration:** Rexasair Inhaler is to be administered by oral inhalation only. Please review the datasheet for the recommended doses of Rexasair Inhaler for children and adults. **Contraindications:** Hypersensitivity to fluticasone propionate, salmeterol xinafoate, or the excipients (see excipients). **Precautions/Warnings:** Where patients have acutely deteriorating asthma or are unstable, Rexasair Inhaler should not be started during an exacerbation. **Rexasair Inhaler is indicated for routine long-term management of asthma, not for acute asthma exacerbations or for patients with acutely deteriorating or unstable asthma. Patients with acute symptoms should be advised to have a fast and short-acting inhaled bronchodilator (e.g. Salbutamol) immediately available to resolve acute symptoms.** **Please review the datasheet available at www.medsafe.govt.nz for full prescribing information.**

SALAIR INHALER contains 100 mcg Salbutamol, **PRESCRIPTION MEDICINE**. **Indication:** Salair Inhaler is indicated for the prevention and treatment of bronchospasm and acts on the B₂ (beta-2) adrenoceptors of bronchial muscle at therapeutic doses, with little or no action on the B₁ (beta-1) adrenoceptors of the heart. With its fast onset of action, it is particularly suitable for the management and prevention of attack in mild asthma and for the treatment of acute exacerbations in moderate and severe asthma. **Dosage and administration:** Salair Inhaler is for oral inhalation only. Salair Inhaler should not be used on demand more than four times per day. Please review the datasheet for the recommended doses of Salair Inhaler for children and adults. **Contraindications:** Management of threatened abortion and premature labour is contraindicated with Salbutamol formulations administered non intravenously. Hypersensitivity to salbutamol or other sympathomimetics or any of the inactive ingredients in Salair (please review excipient list). **Precautions/Warnings:** Patients with unstable or severe asthma should not rely on bronchodilators as the main or only form of treatment. **Please review the datasheet available at www.medsafe.govt.nz for full prescribing information.** Distributed by REX Medical Ltd, PO Box 18-119, Auckland 1743. October 2015. TAPS NA 8033 RX151023 v1 © REX Medical Ltd