



Comparative osteology:

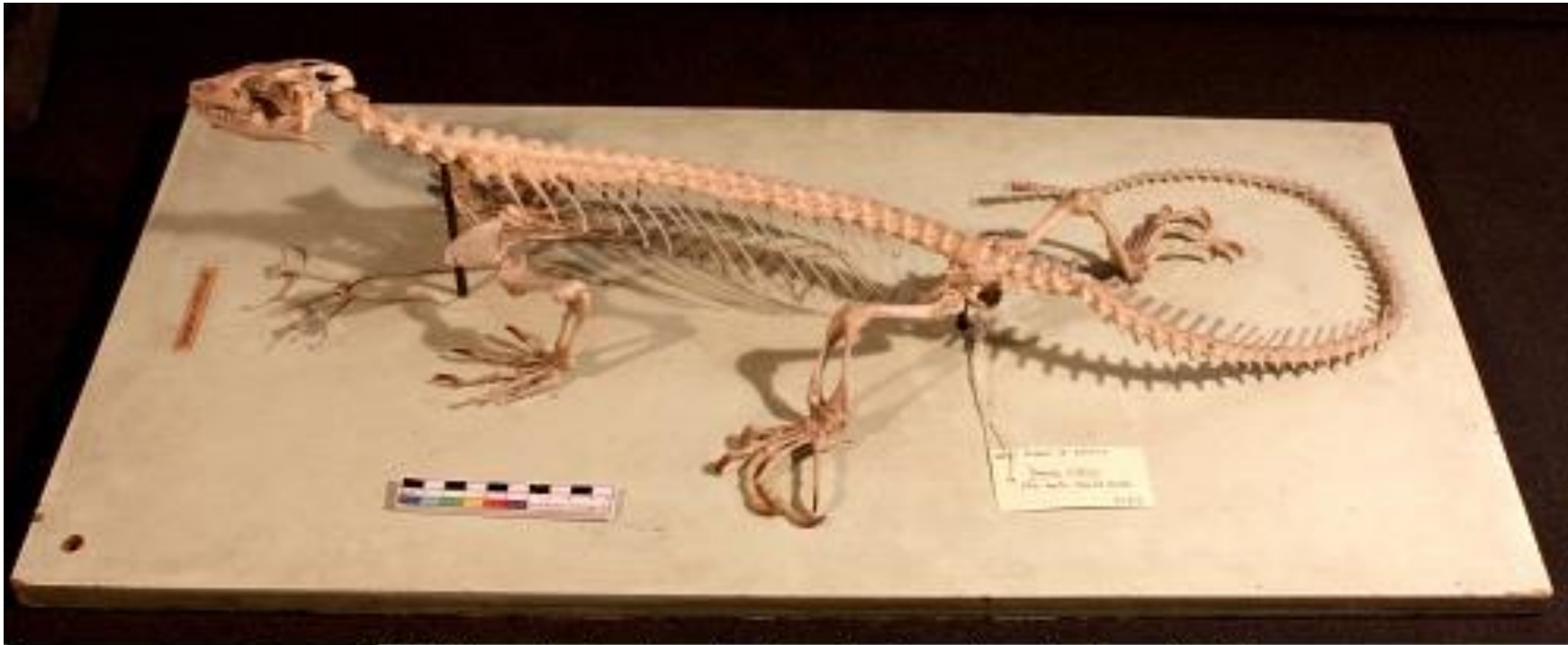
Lets Learn about bones

Compiled by Dr. Namita Nayyar

Diagram credits: Ms. Shalini Panwar

(B.Sc. (H) Zoology 2018-21)

Varanus Osteology



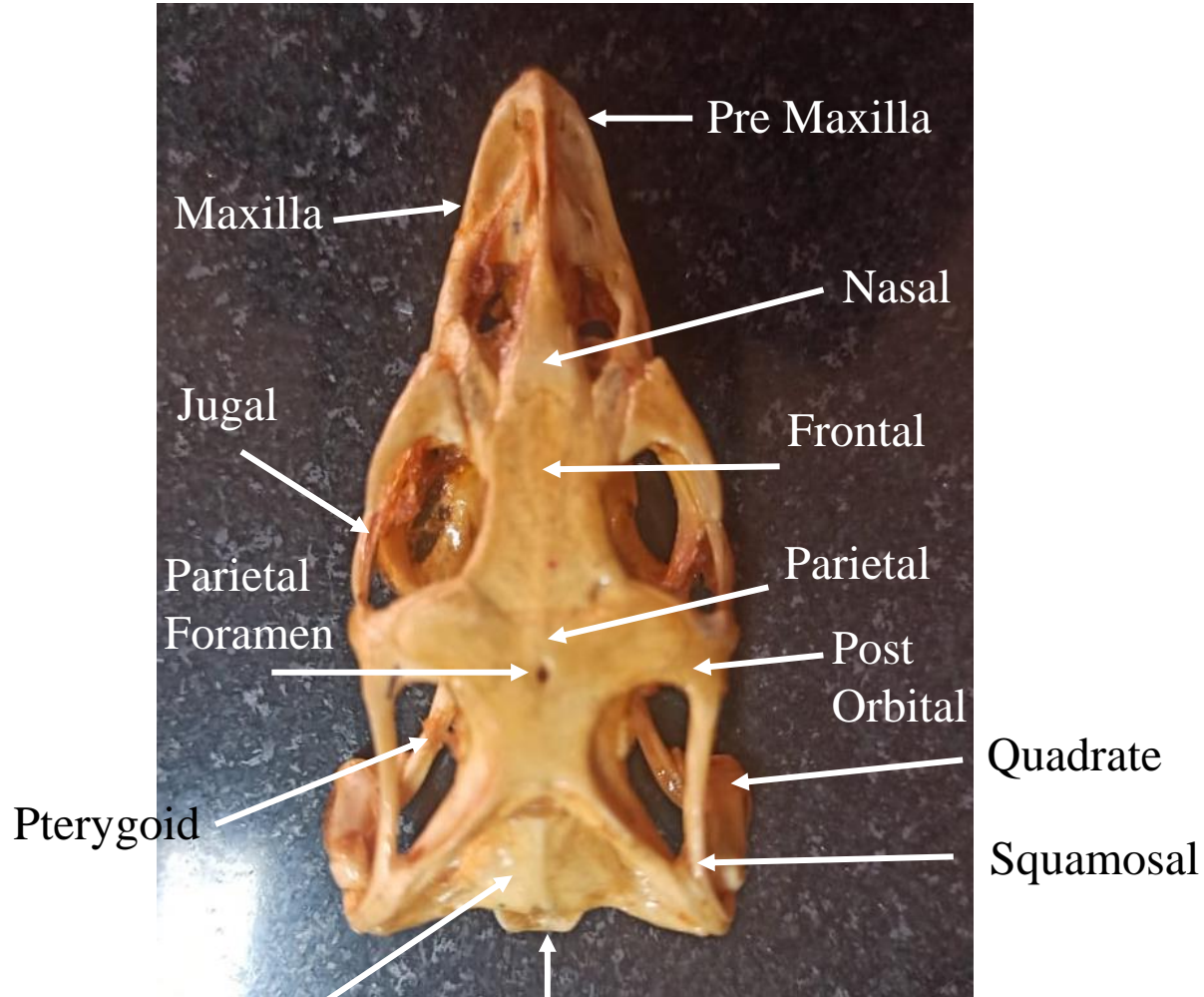
© University College London. Released under Creative Commons Attribution-NonCommercial-ShareAlike license.
See <http://creativecommons.org/licenses/by-nc-sa/3.0>



*For better Results:
Attend the Class... 😊*

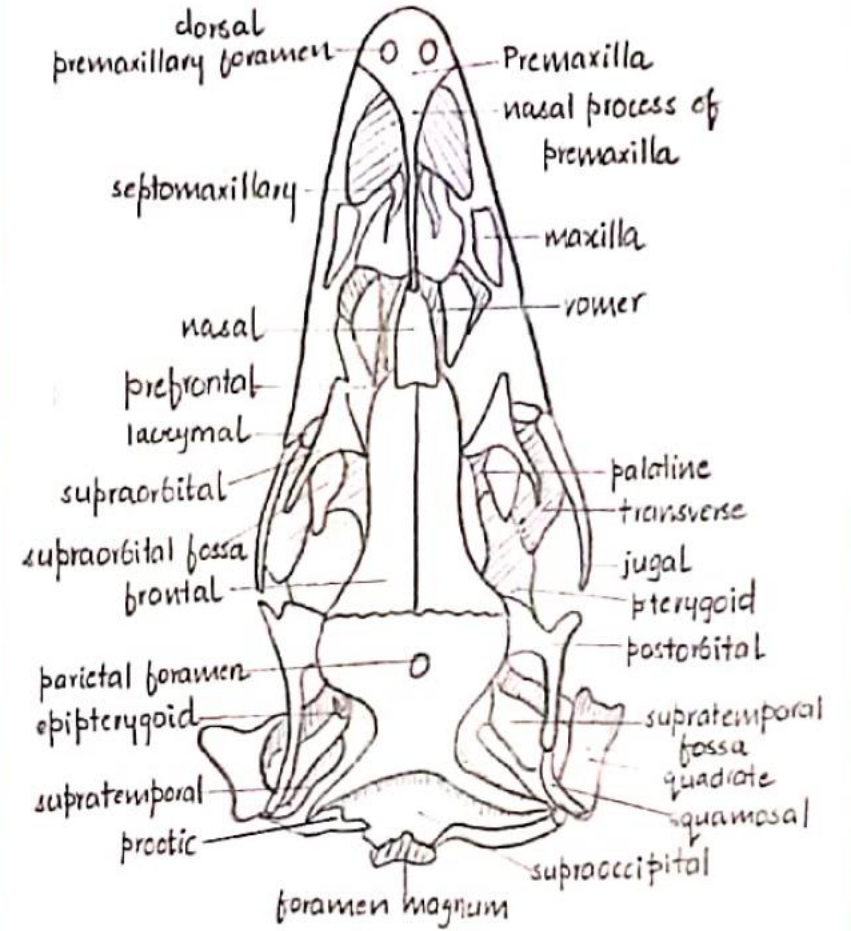
Skull

Dorsal View

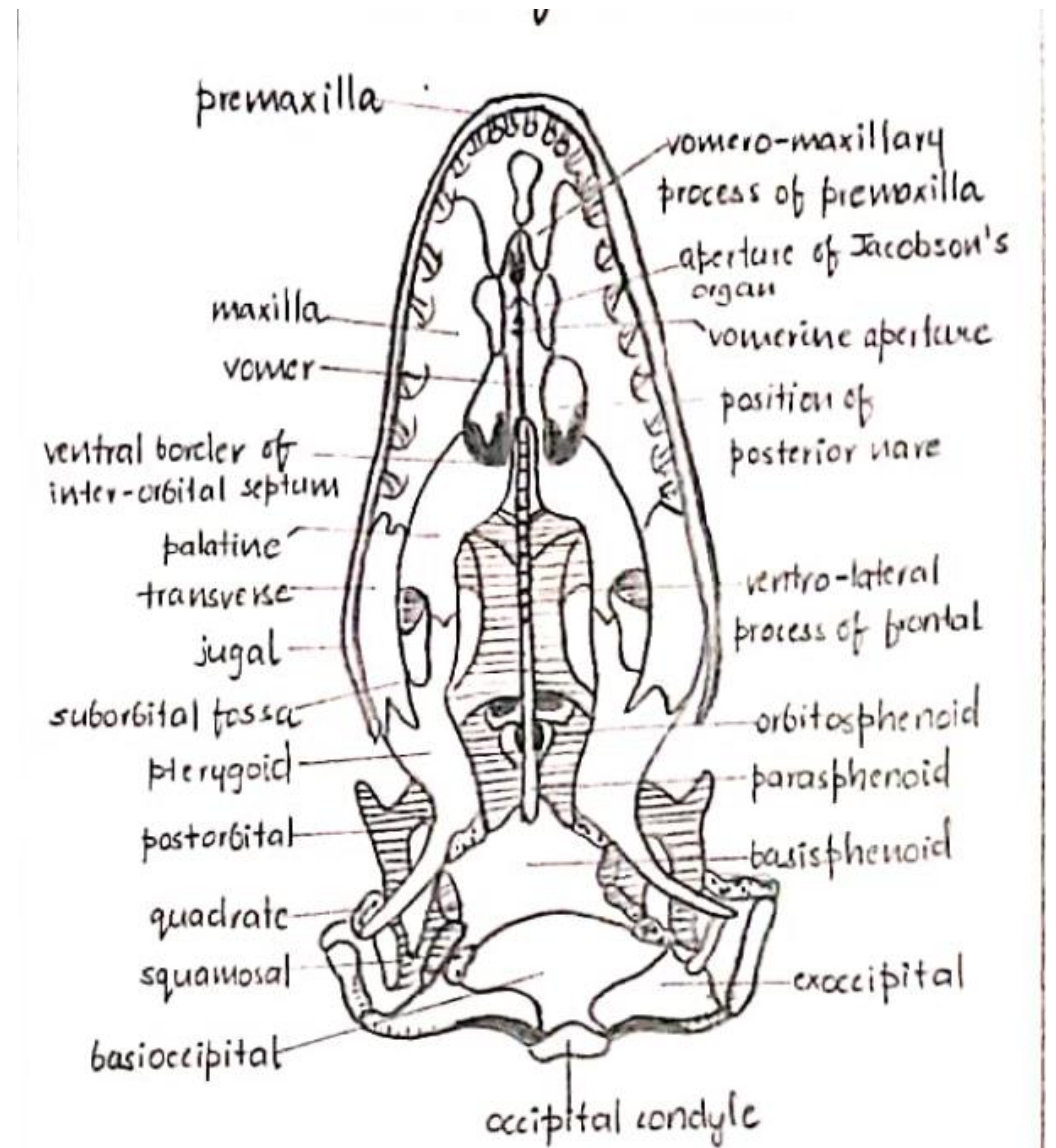
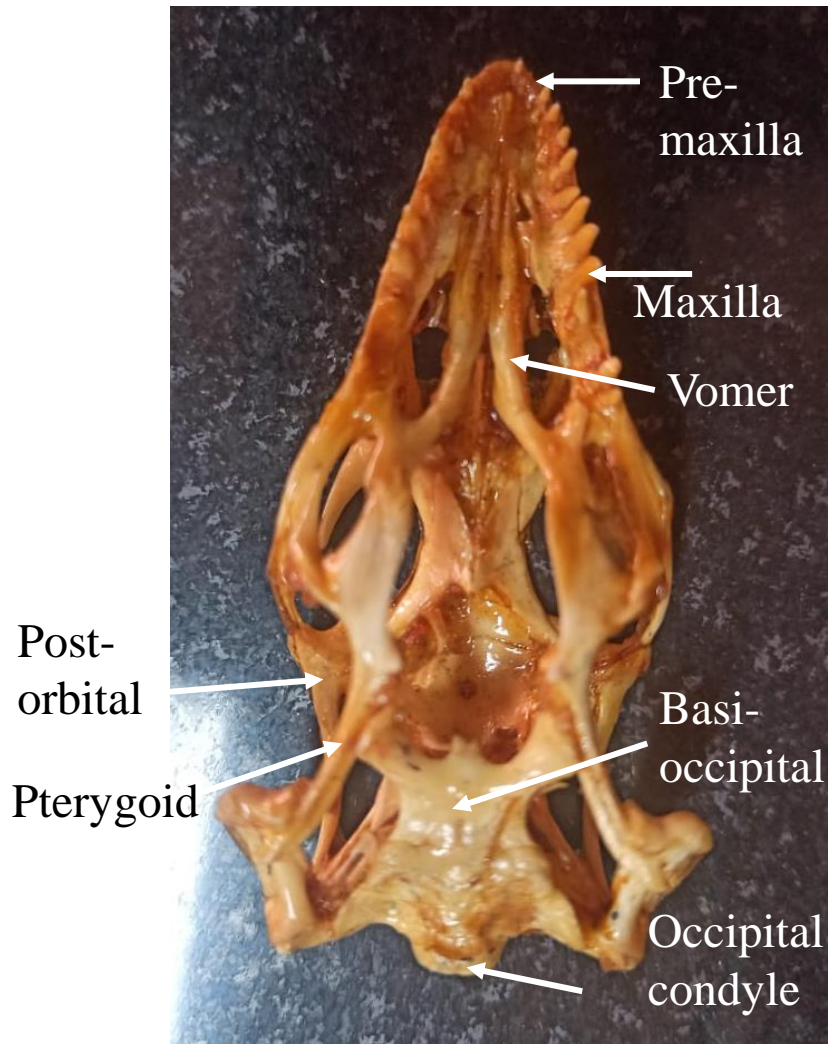


Supra Occipital

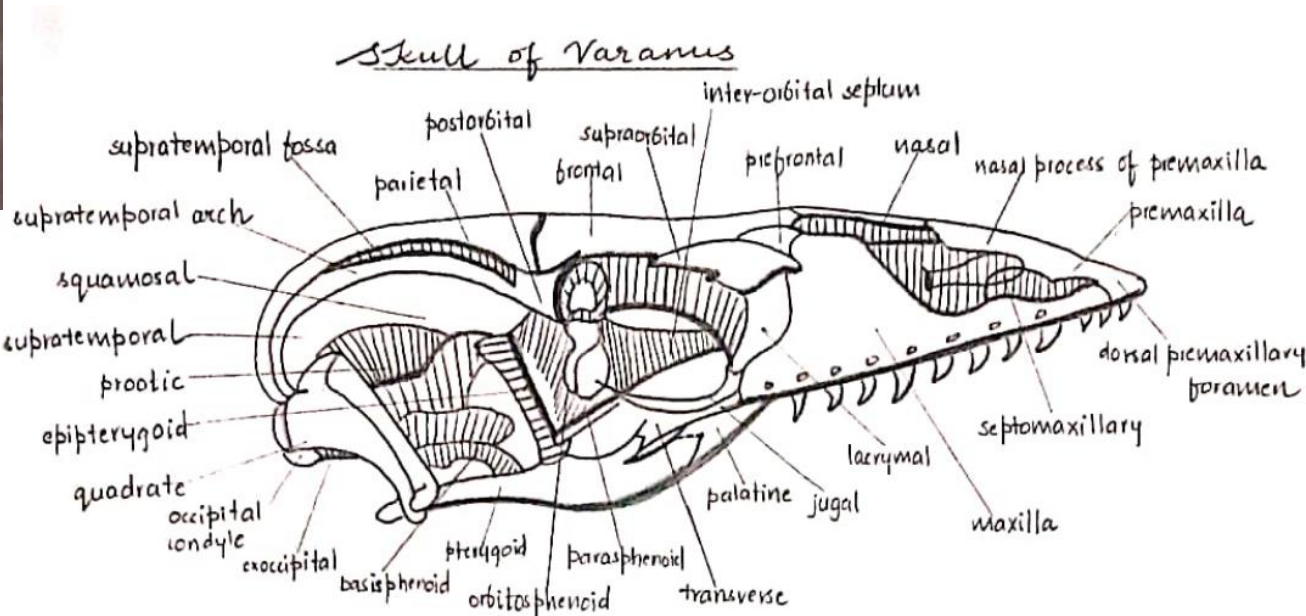
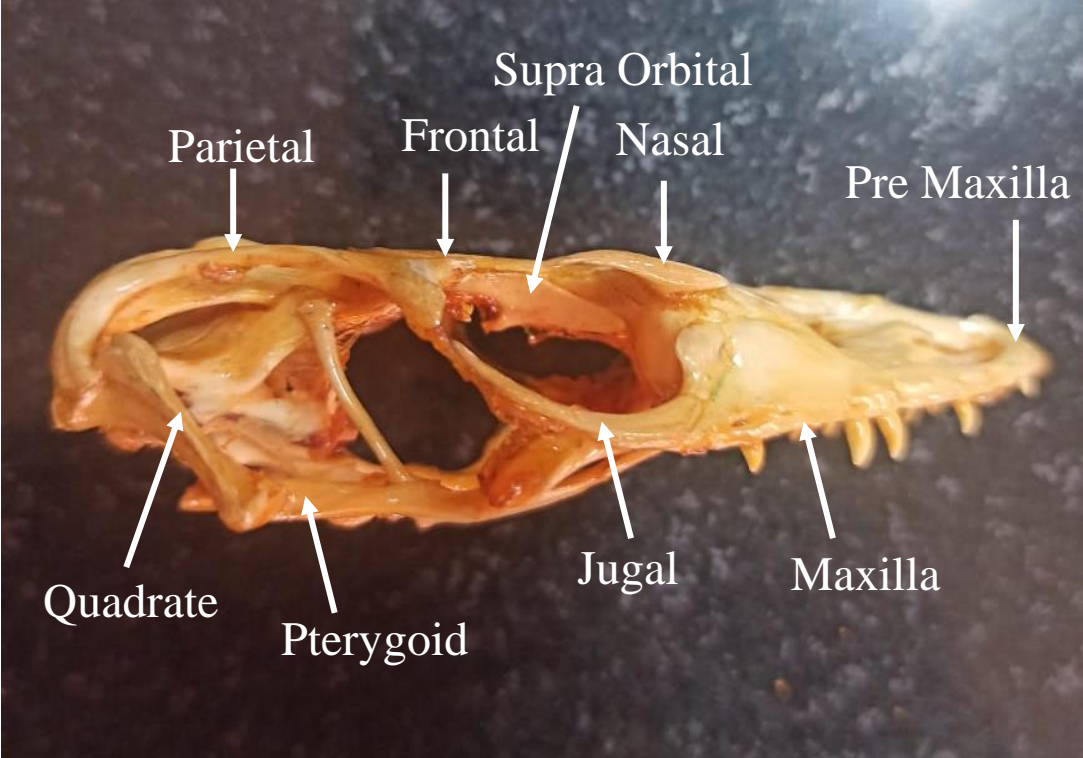
Foramen Magnum



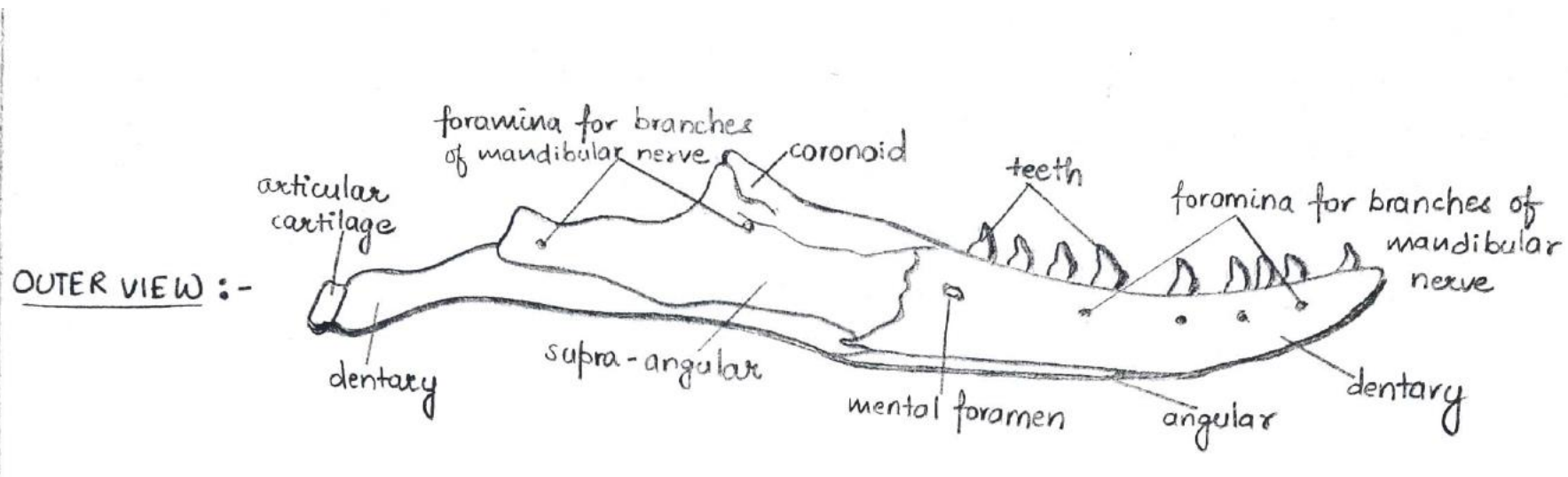
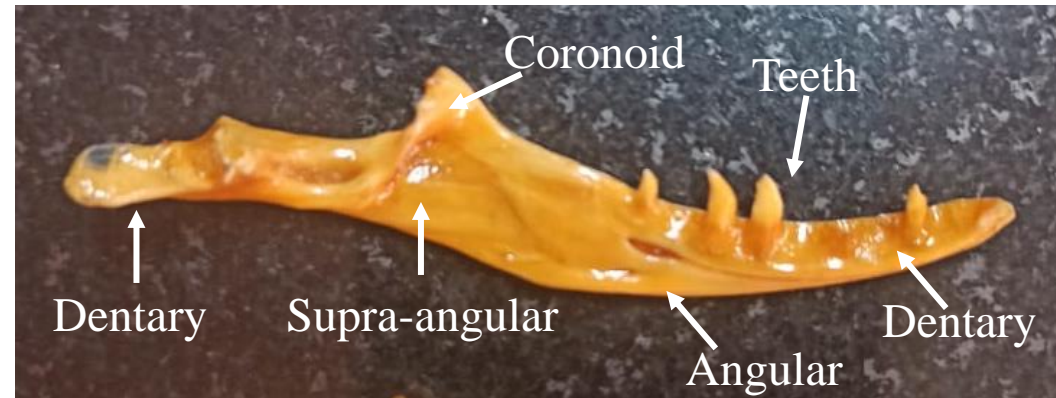
Ventral View



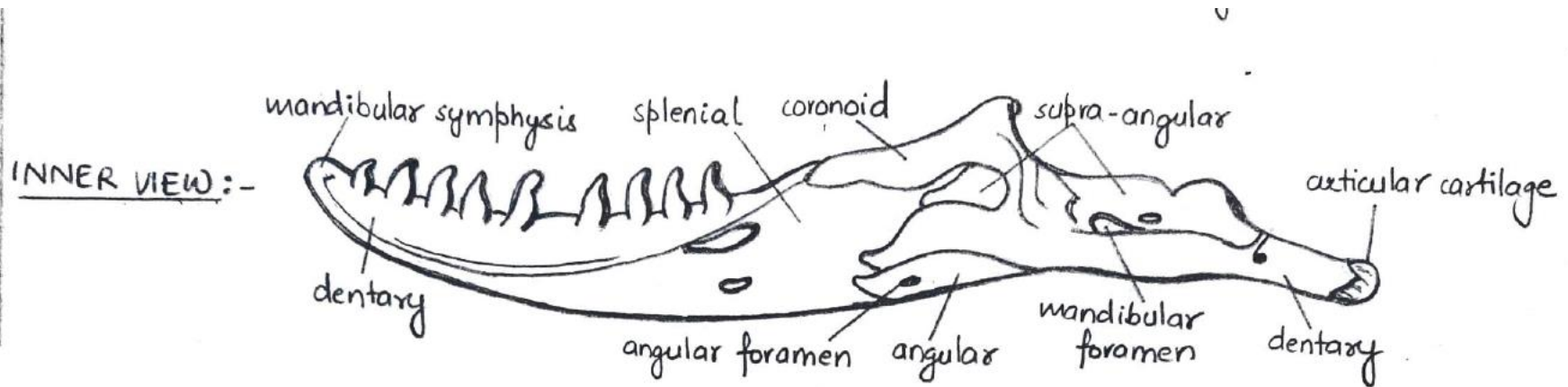
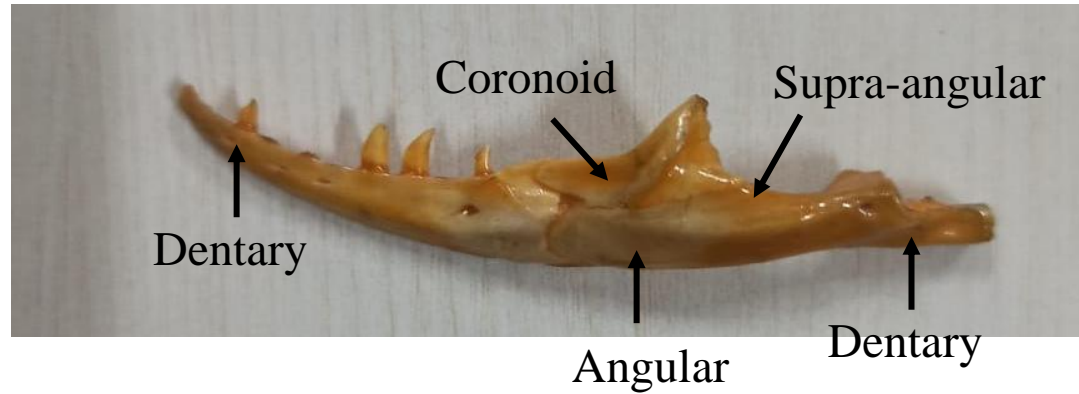
Lateral View



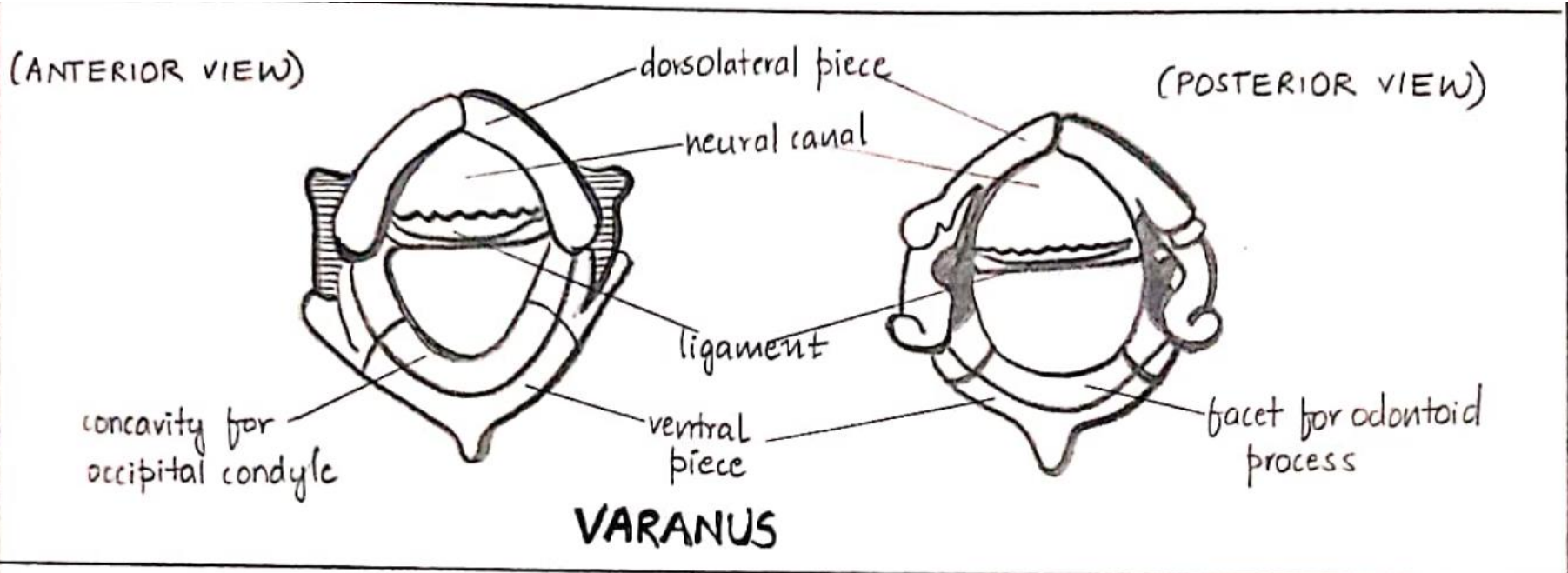
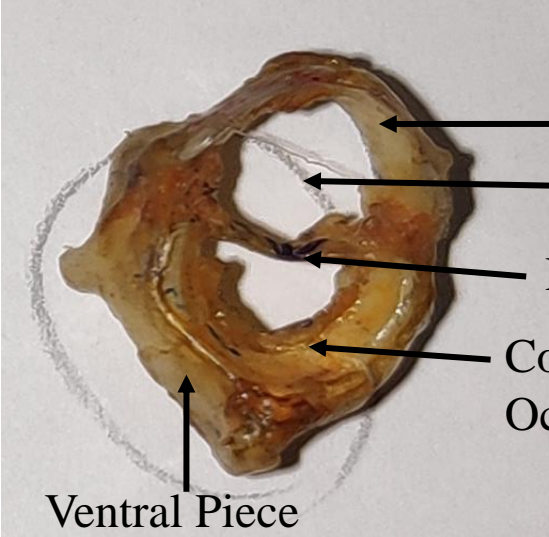
Lower Jaw Front View



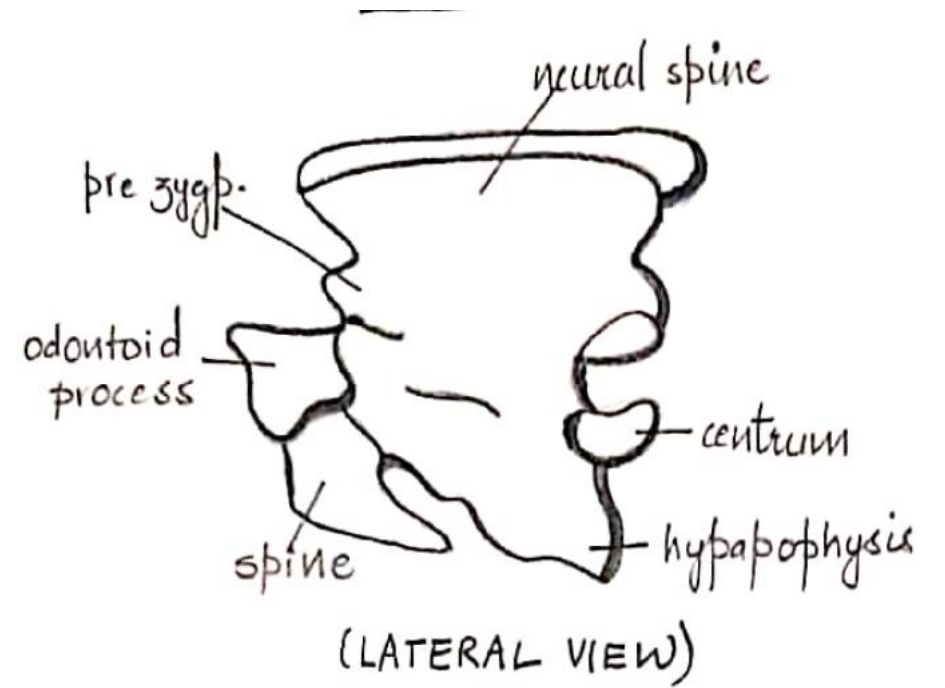
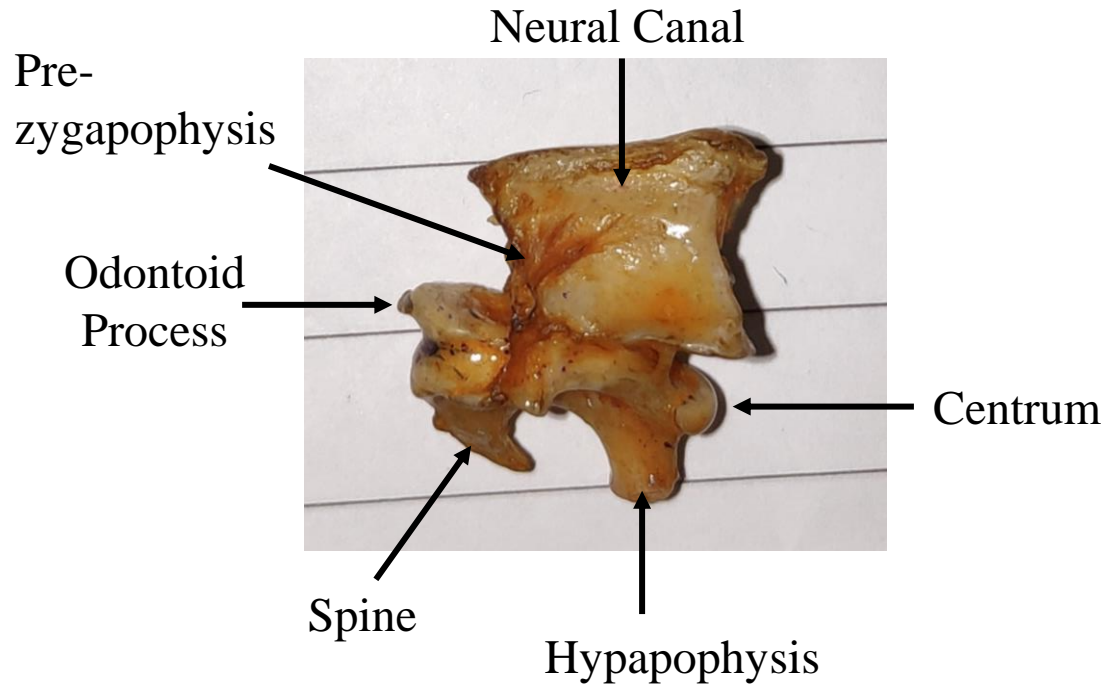
Lower Jaw Back View



Atlas Vertebrae



Axis Vertebrae



Typical Cervical Vertebrae



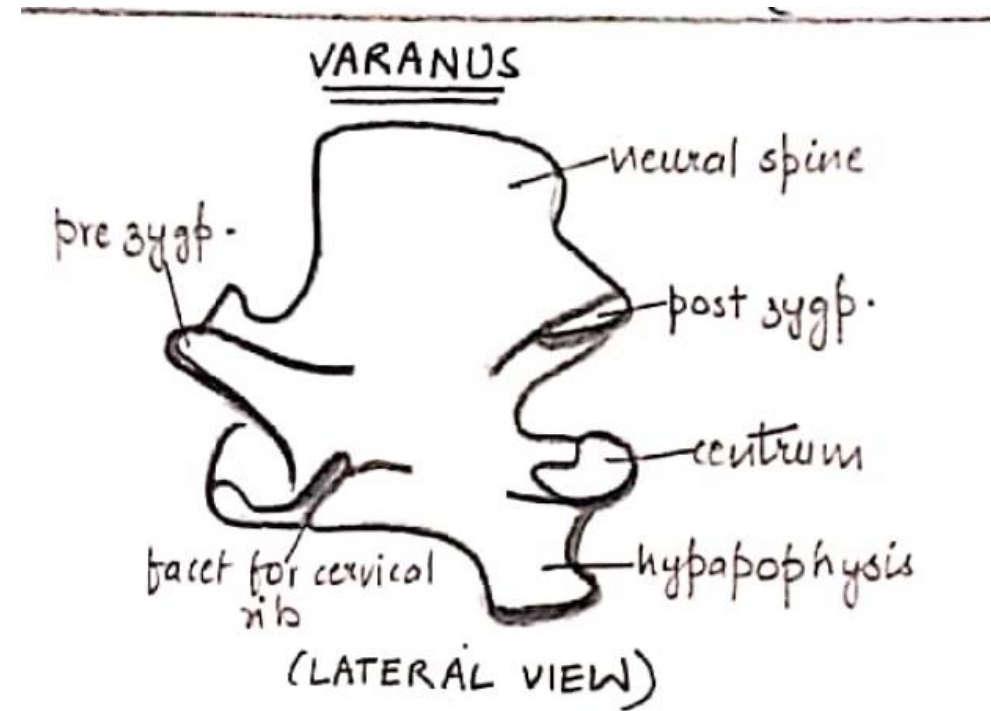
Pre zygapophysis

Neural Spine

Post zygapophysis

Centrum

Hypapophysis



VARANUS

neural spine

pre zygp.

post zygp.

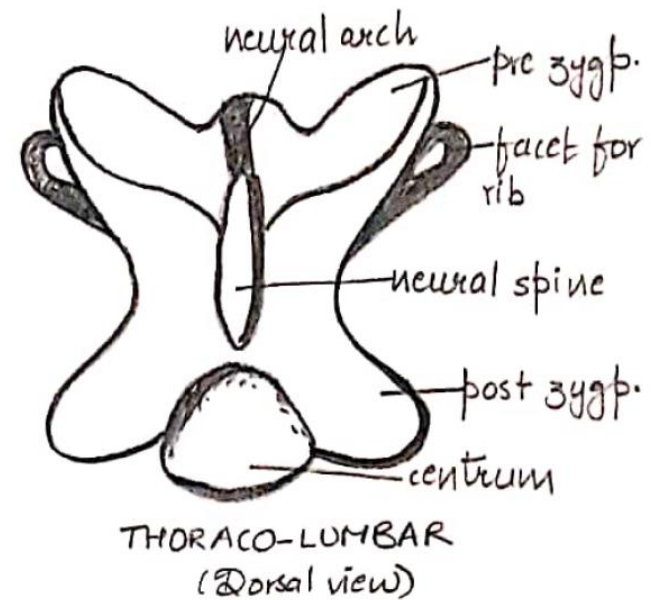
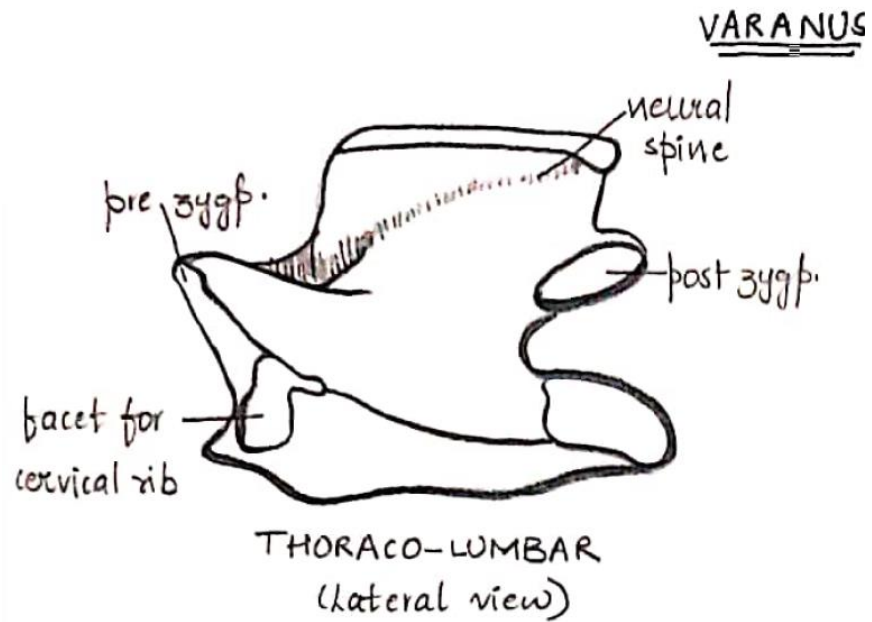
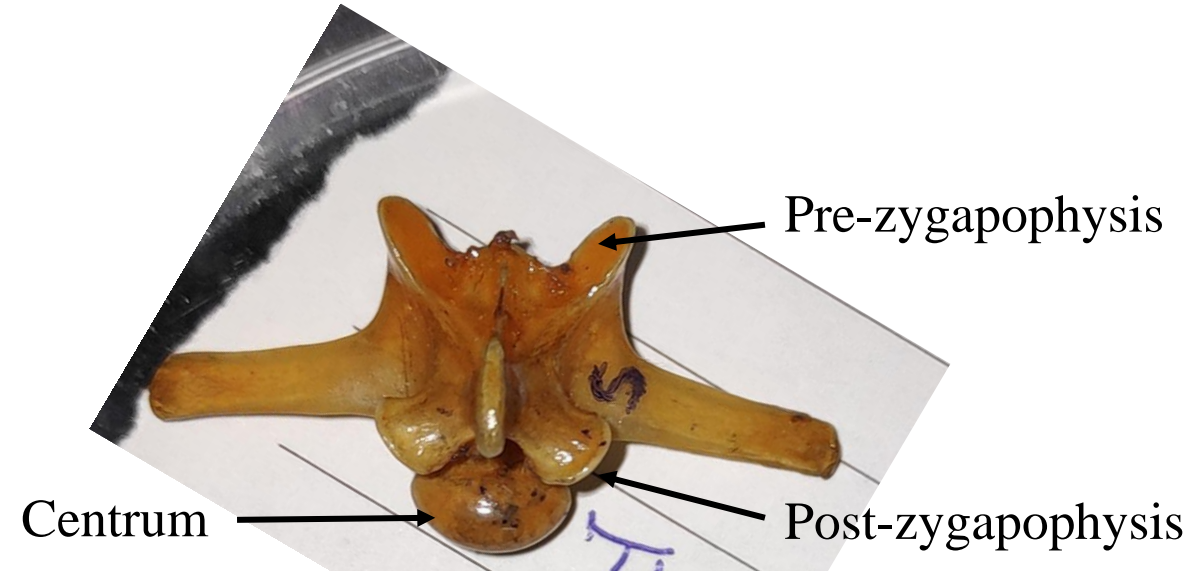
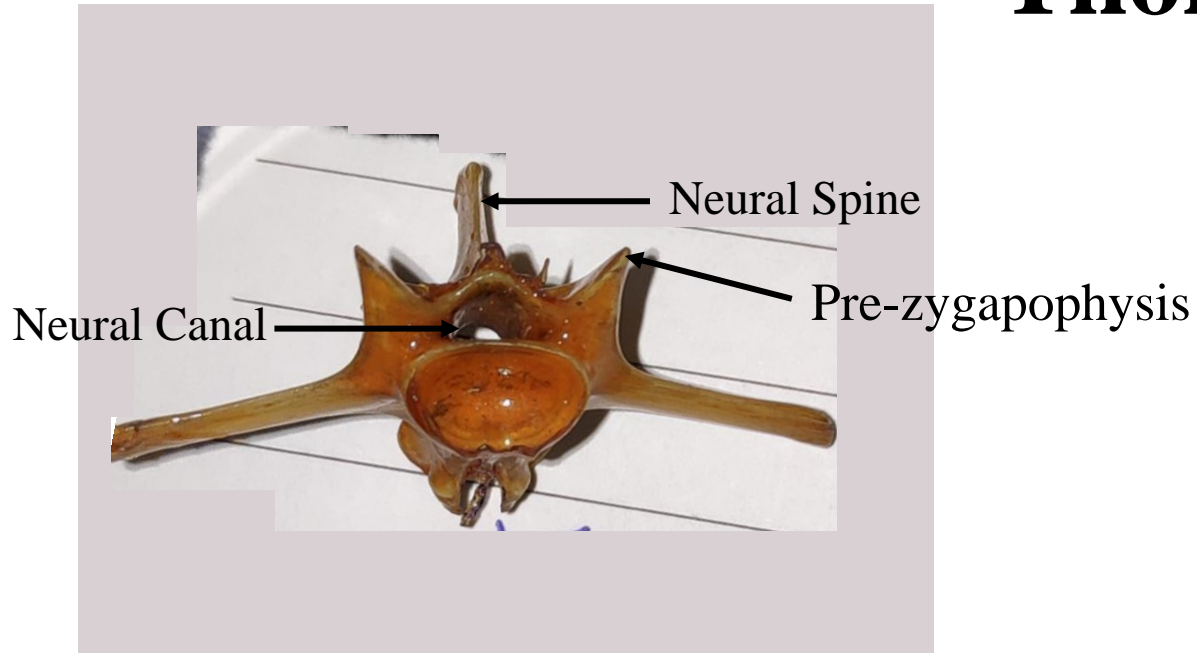
centrum

facet for cervical rib

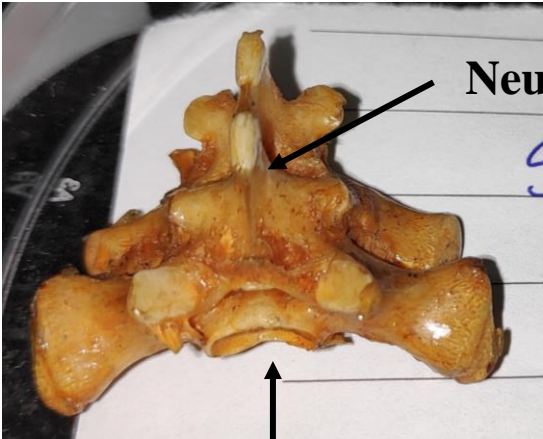
hypapophysis

(LATERAL VIEW)

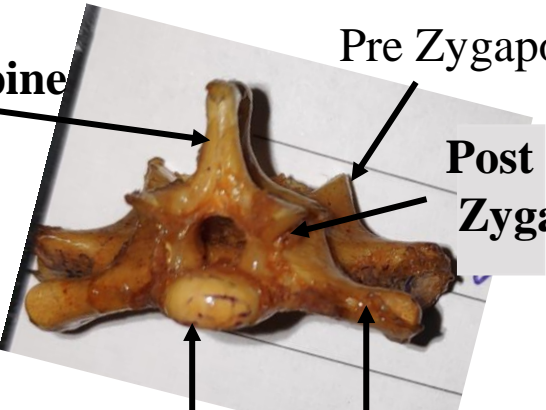
Thoraco lumbar



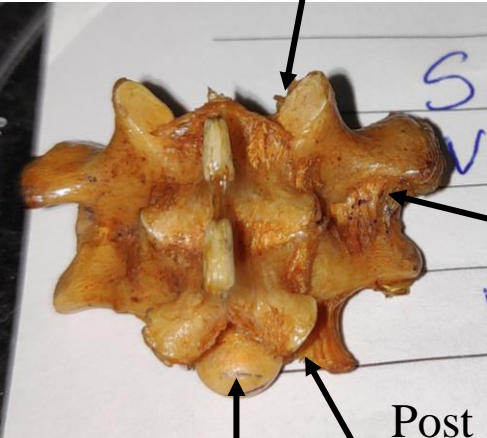
Sacral Vertebrae



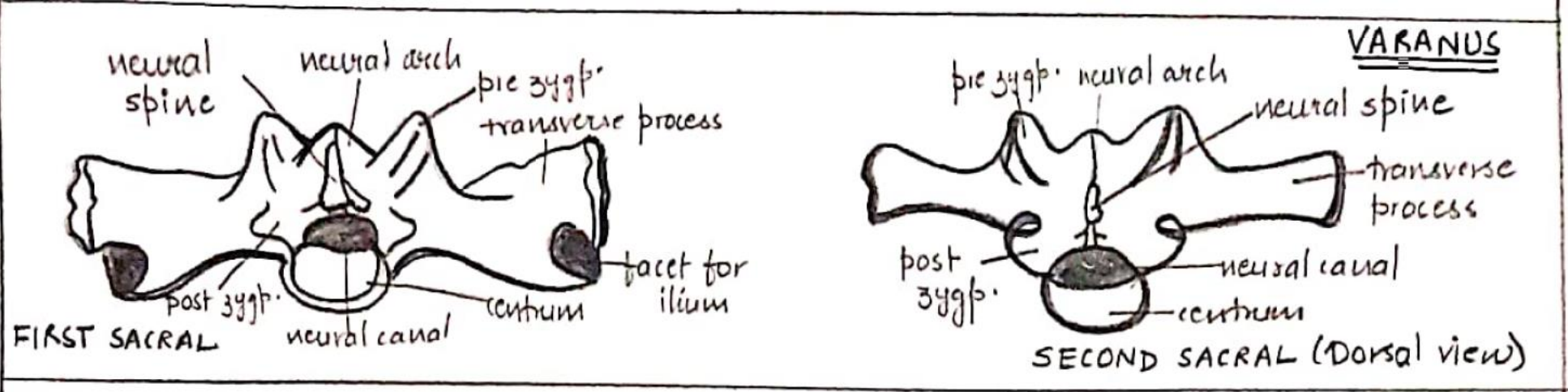
Centrum



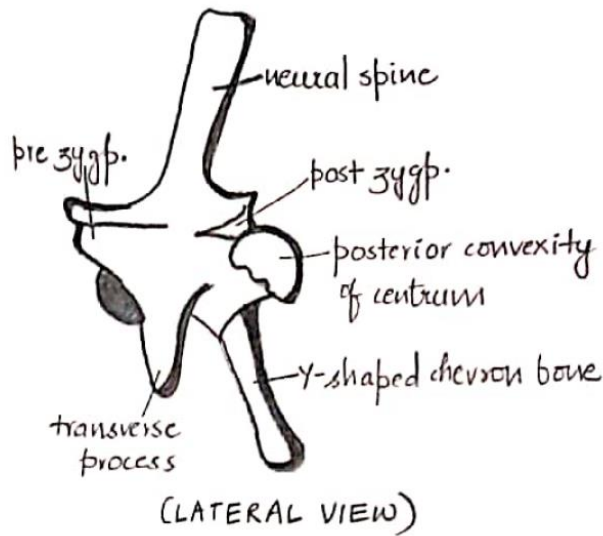
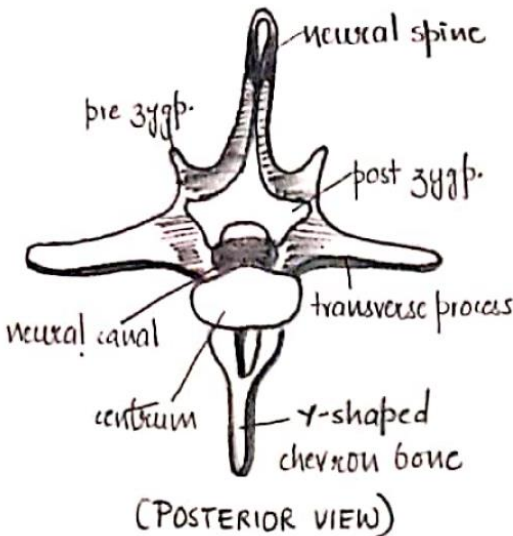
Centrum Transverse Process



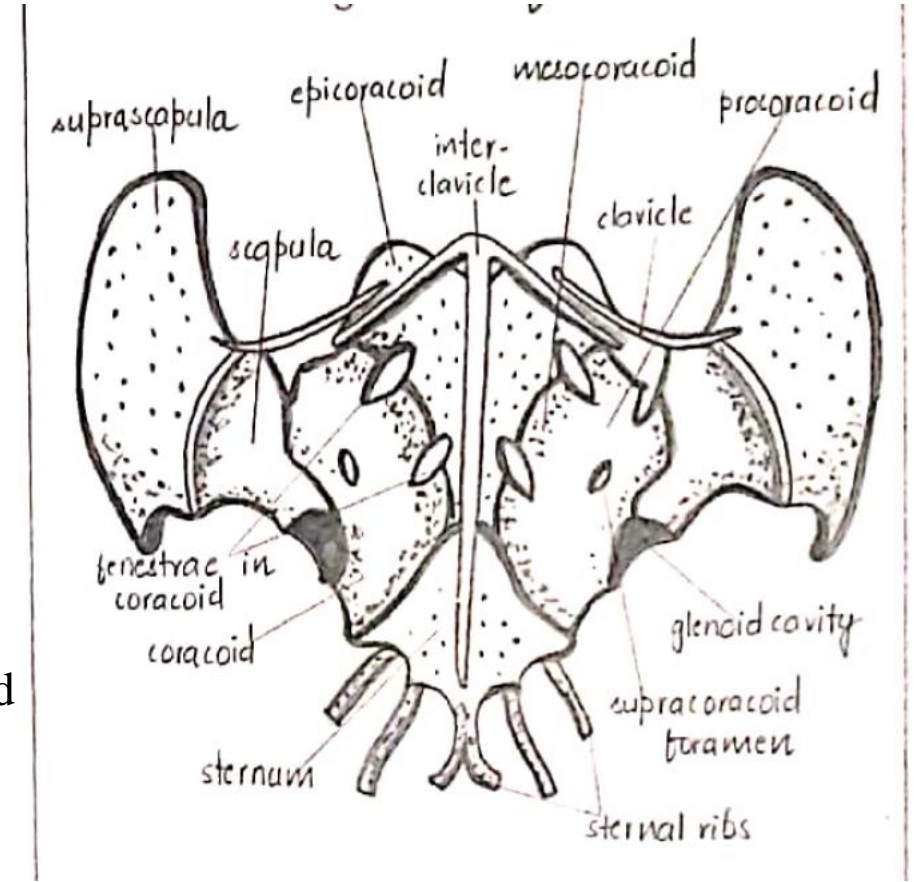
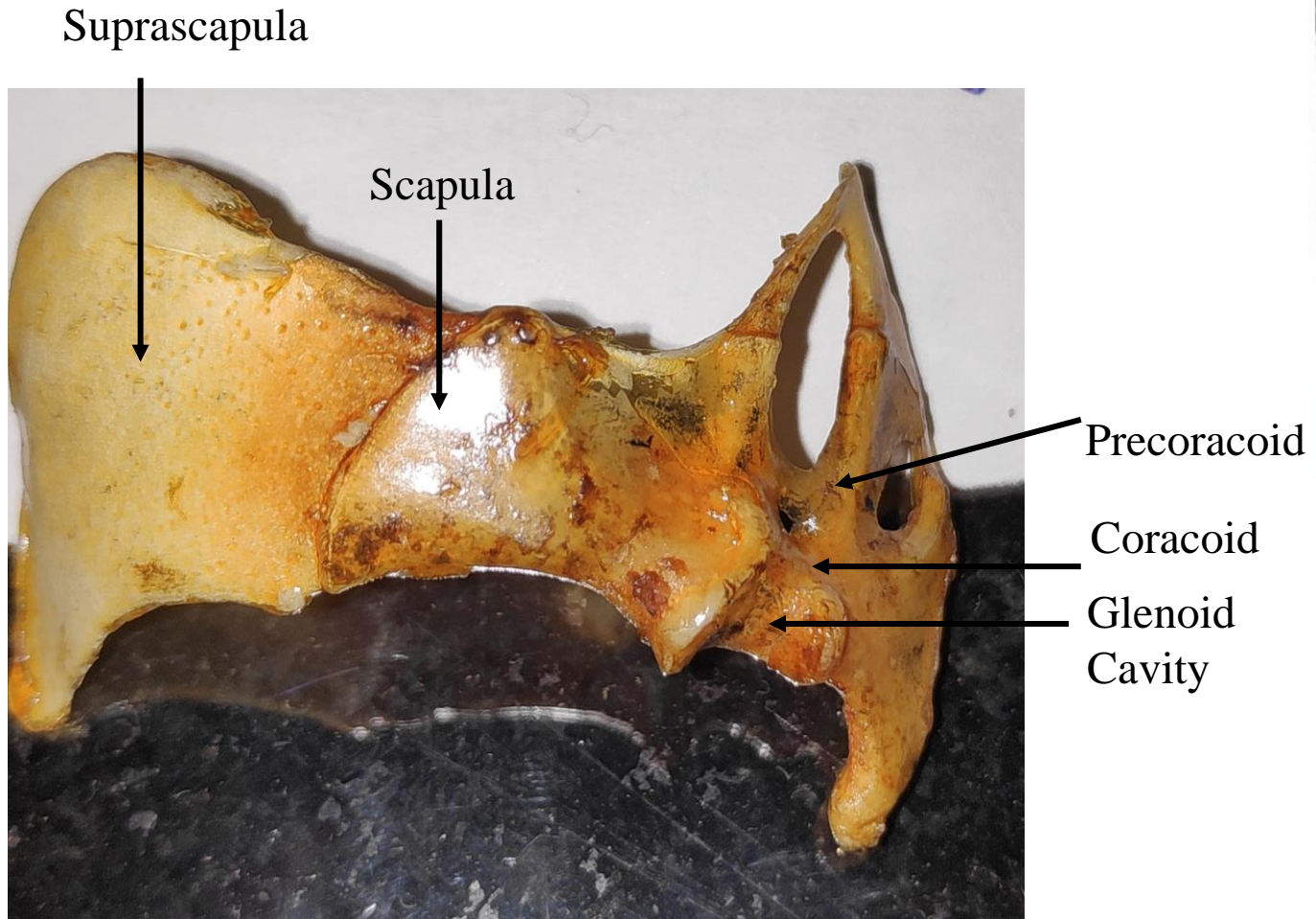
Centrum Post Zygapophysis



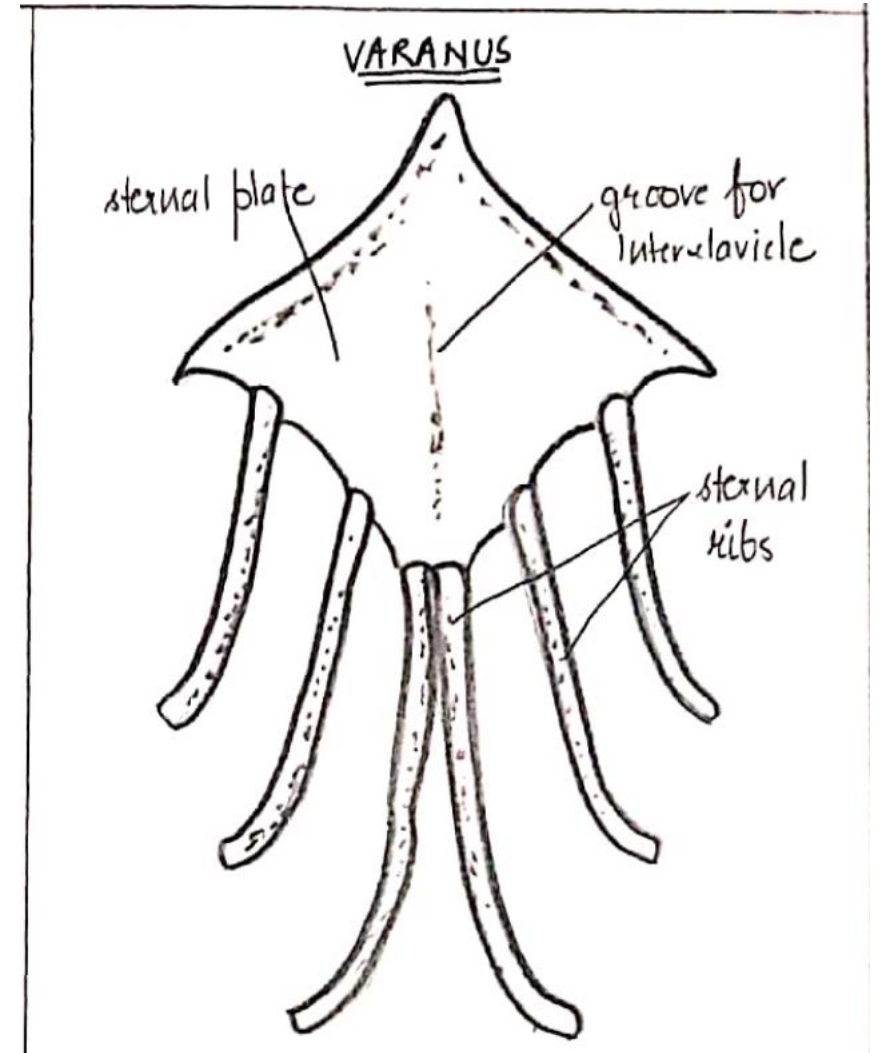
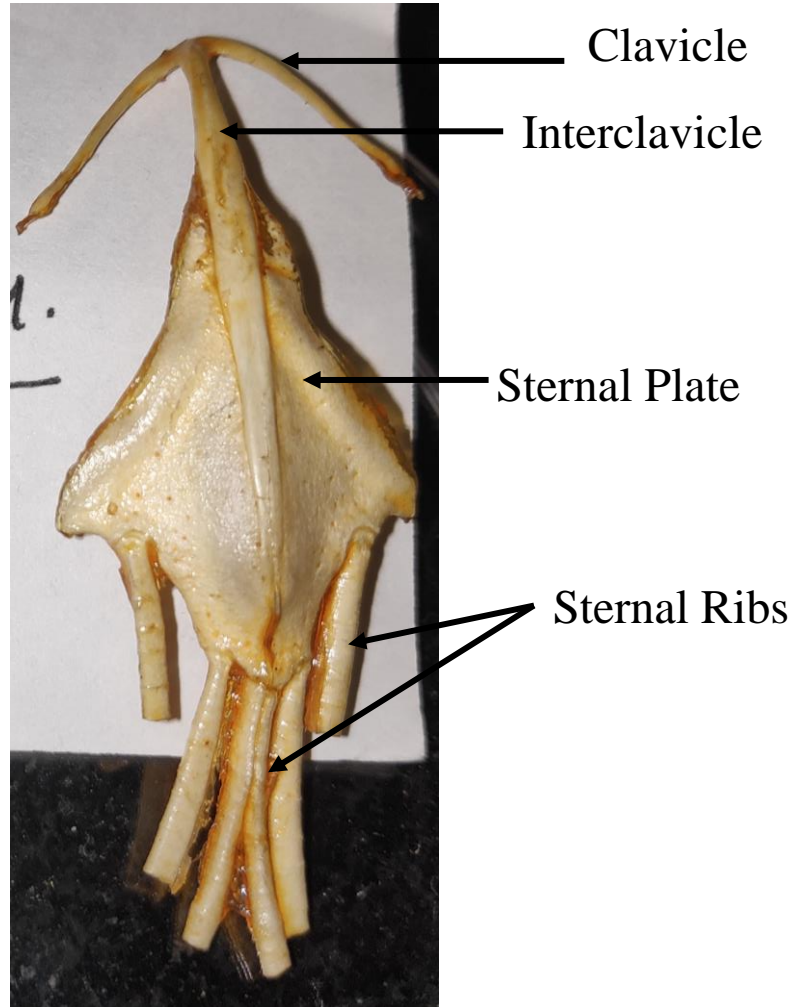
Caudal Vertebrae



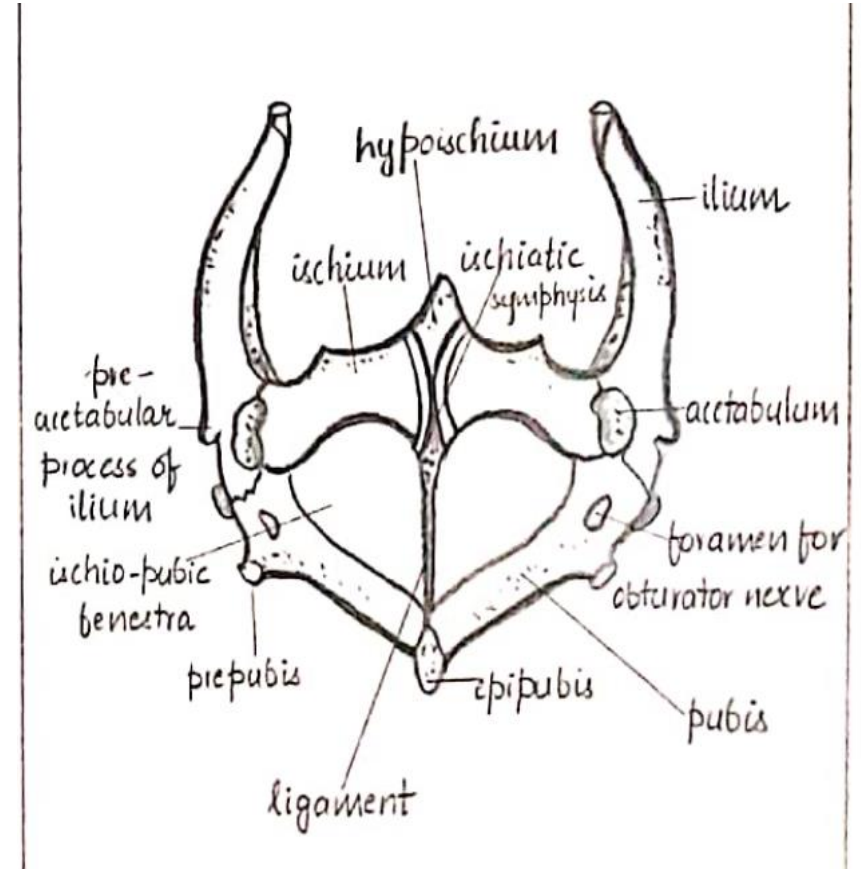
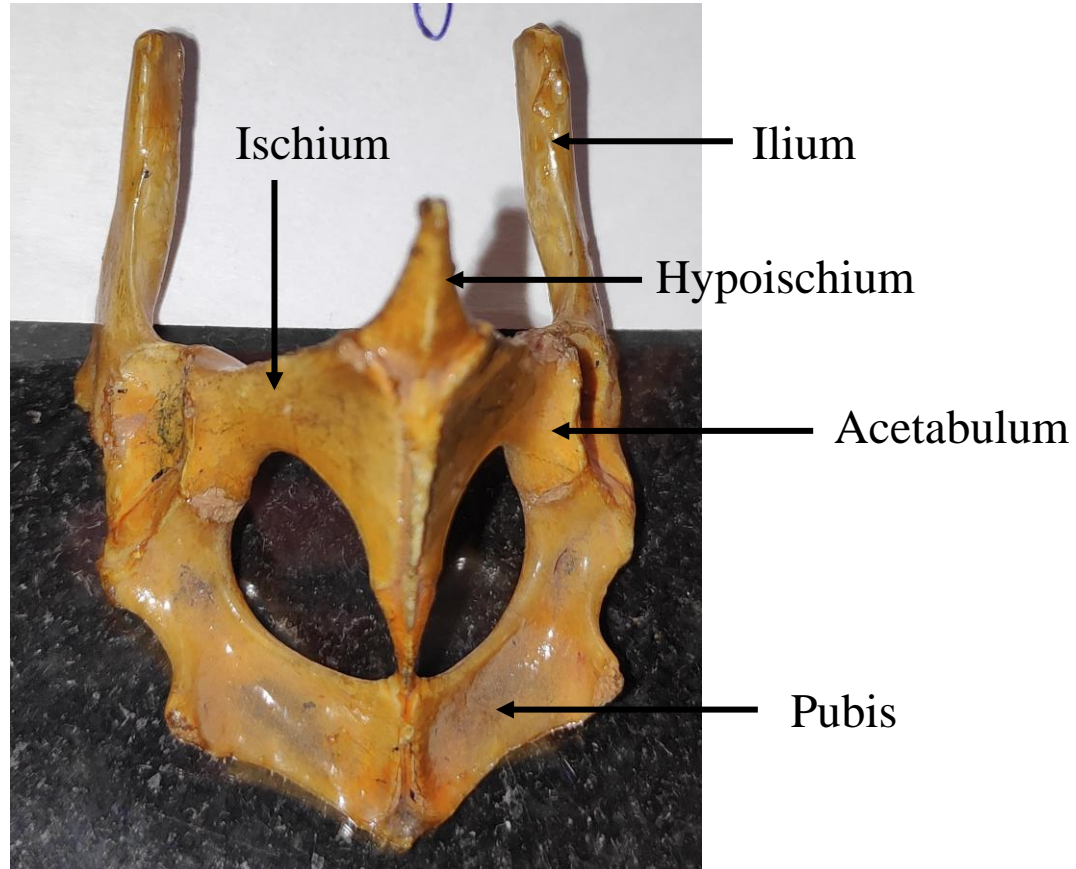
Pectoral Girdle



Sternum



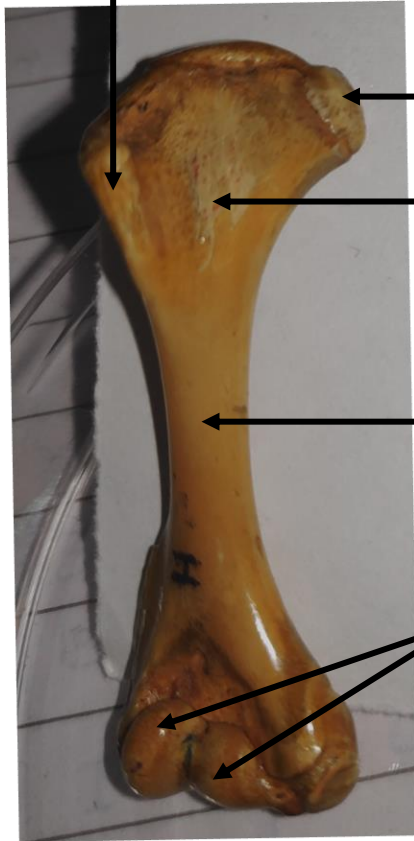
Pelvic Girdle



Fore Limbs

Humerus

Medial process

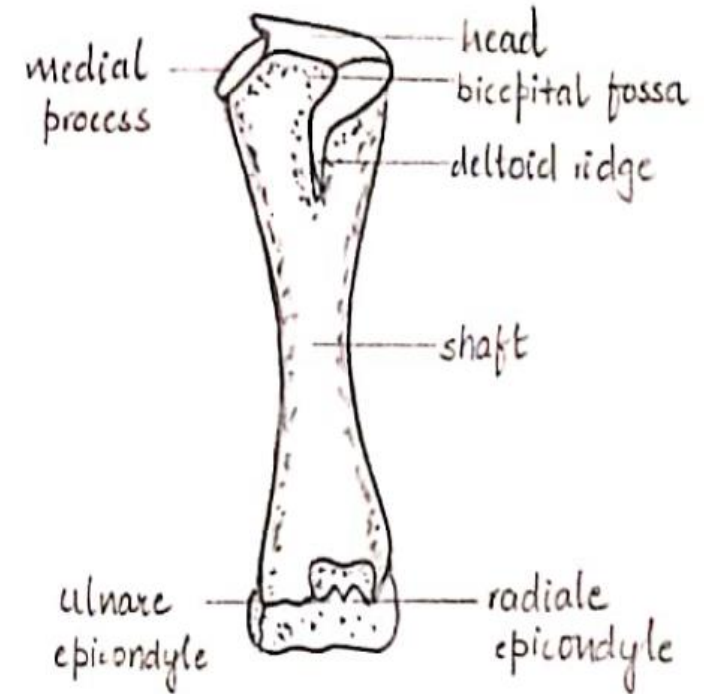


Head

Bicipital fossa

Shaft

Ulnare and Radiale epicondyle



medial process

head

bicipital fossa

deltoid ridge

shaft

ulnare epicondyle

radiale epicondyle

Radius- Ulna

Olecranon Process

Ulna

Radius

Ulnare

Radiale



RADIUS AND ULNA OF VARANUS

olecranon process

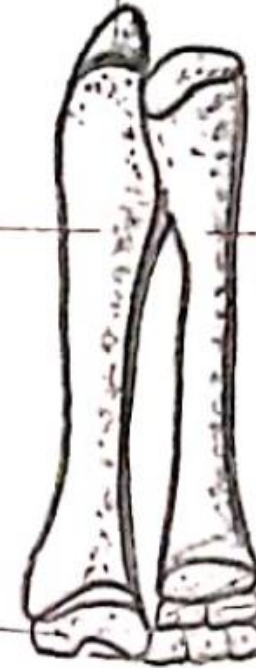
ulna

radius

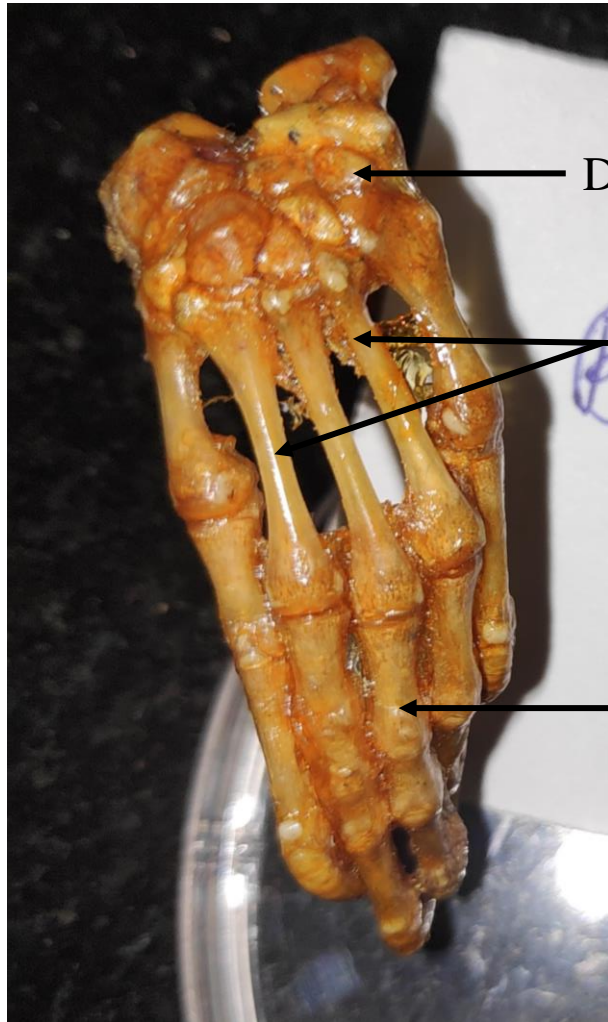
ulnare

centrale

radiale



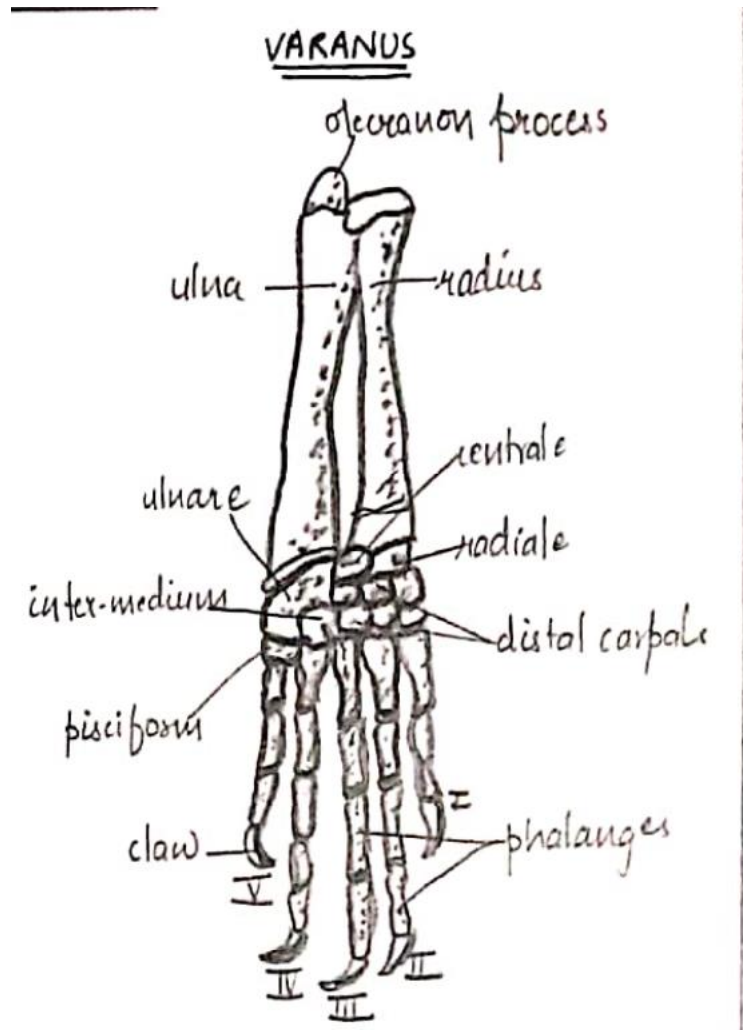
Bones of Hand



Distal Carpals

Metacarpals

Phalanges



VARANUS

olecranon process

ulna

radius

ulnare

centrale

radiale

inter-mediun

distal carpale

pisiform

claw

phalanges

V

IV

III

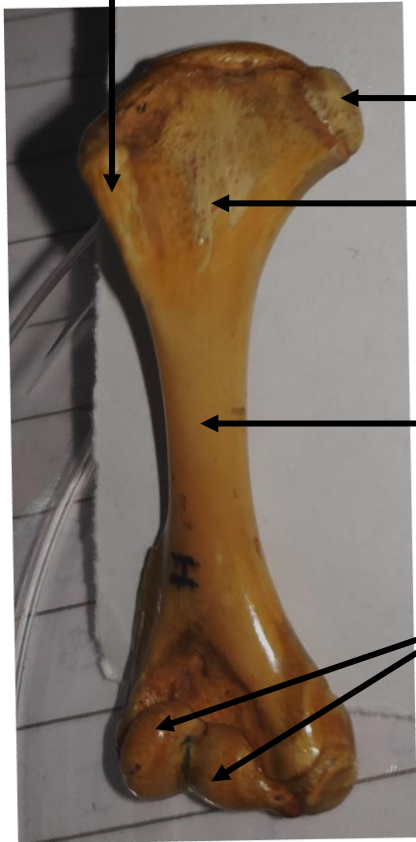
II

I

Fore Limbs

Humerus

Medial process



Head

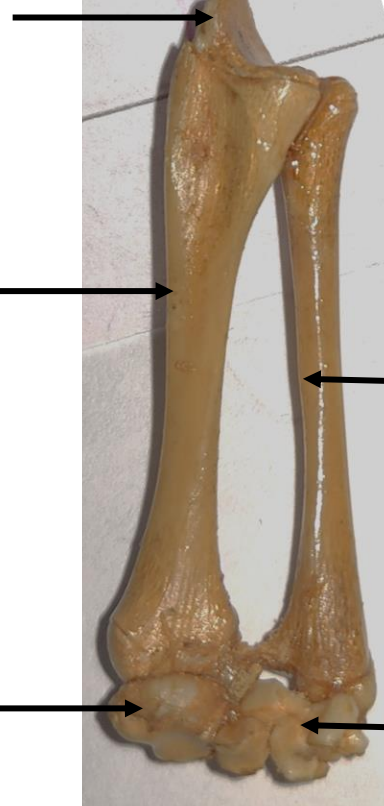
Bicipital fossa

Shaft

Ulnare and
Radiale
epicondyle

Radius Ulna

Olecranon Process



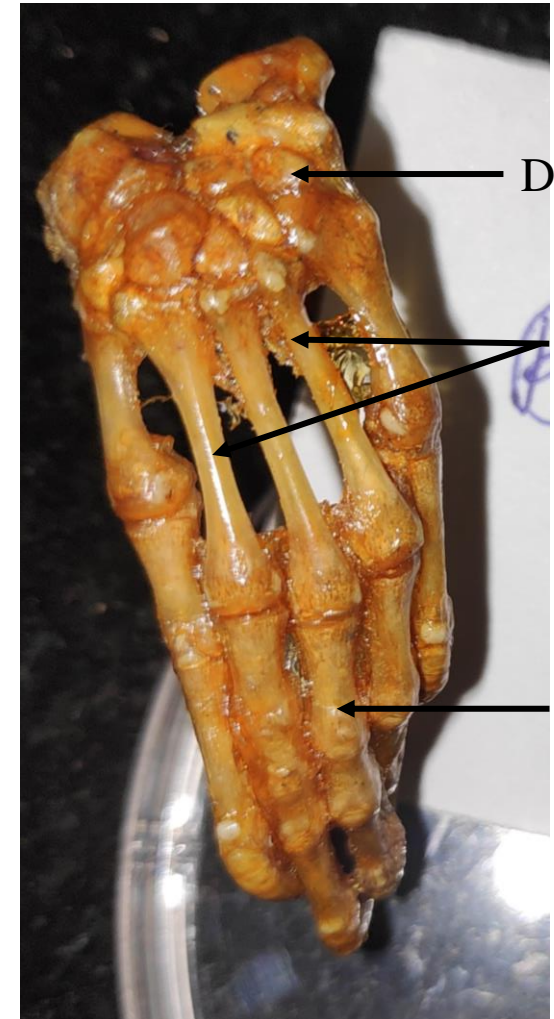
Ulna

Radius

Ulnare

Radiale

Hand



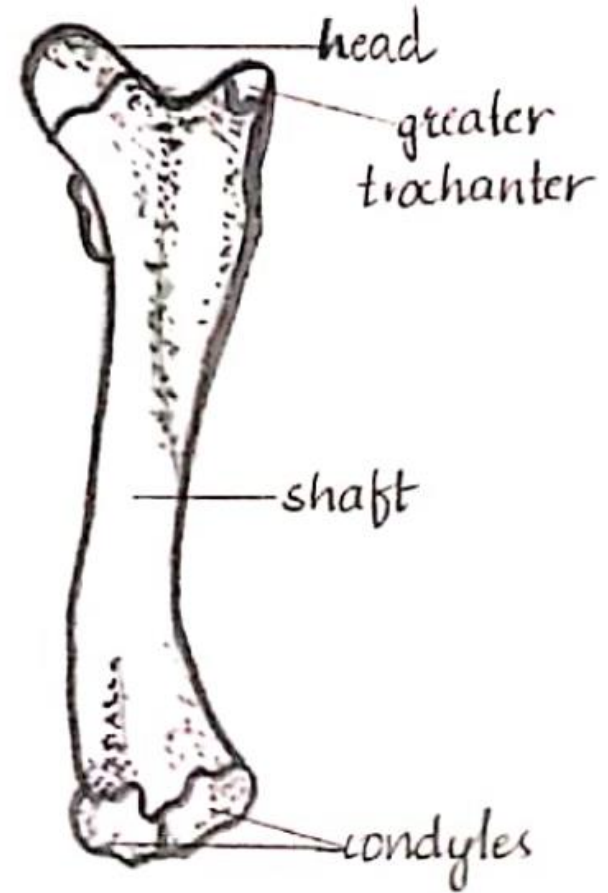
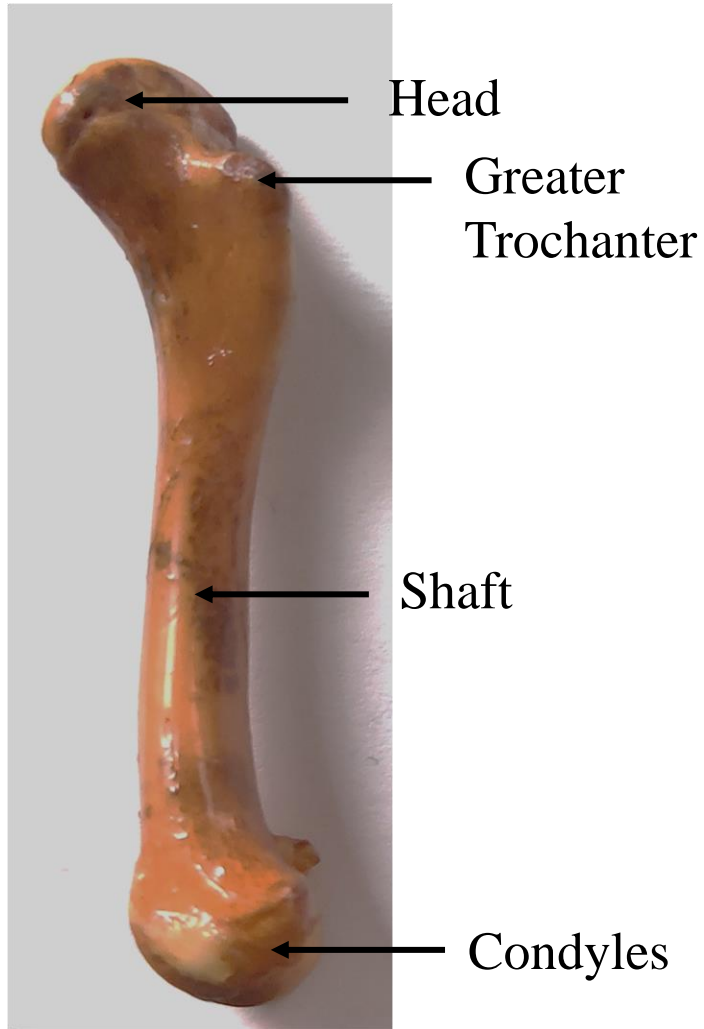
Distal Carpals

Metacarpals

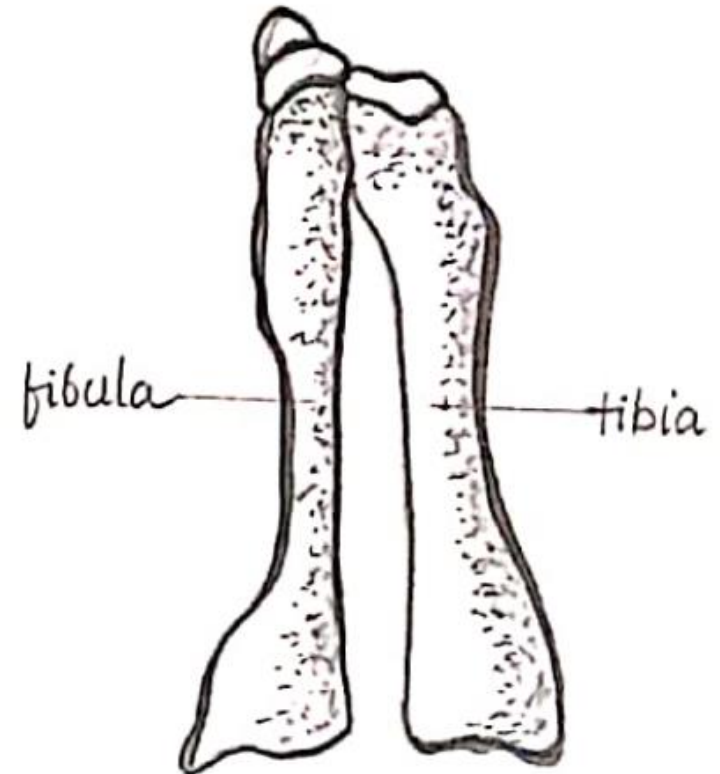
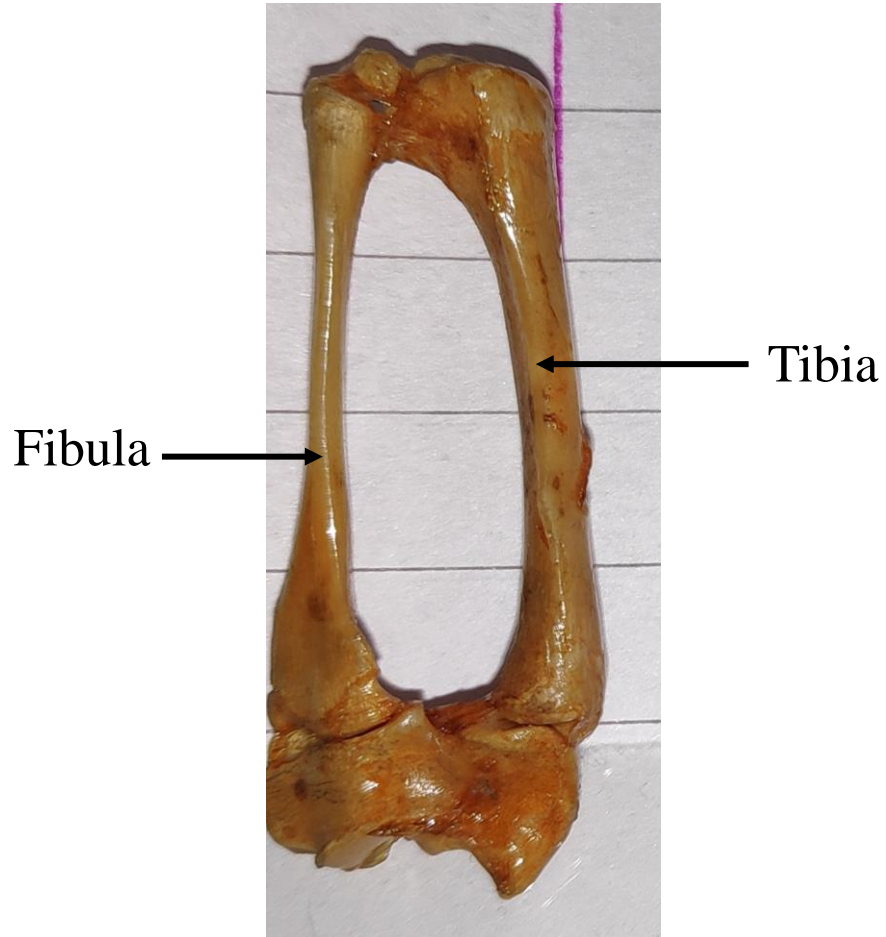
Phalanges

Hind Limbs

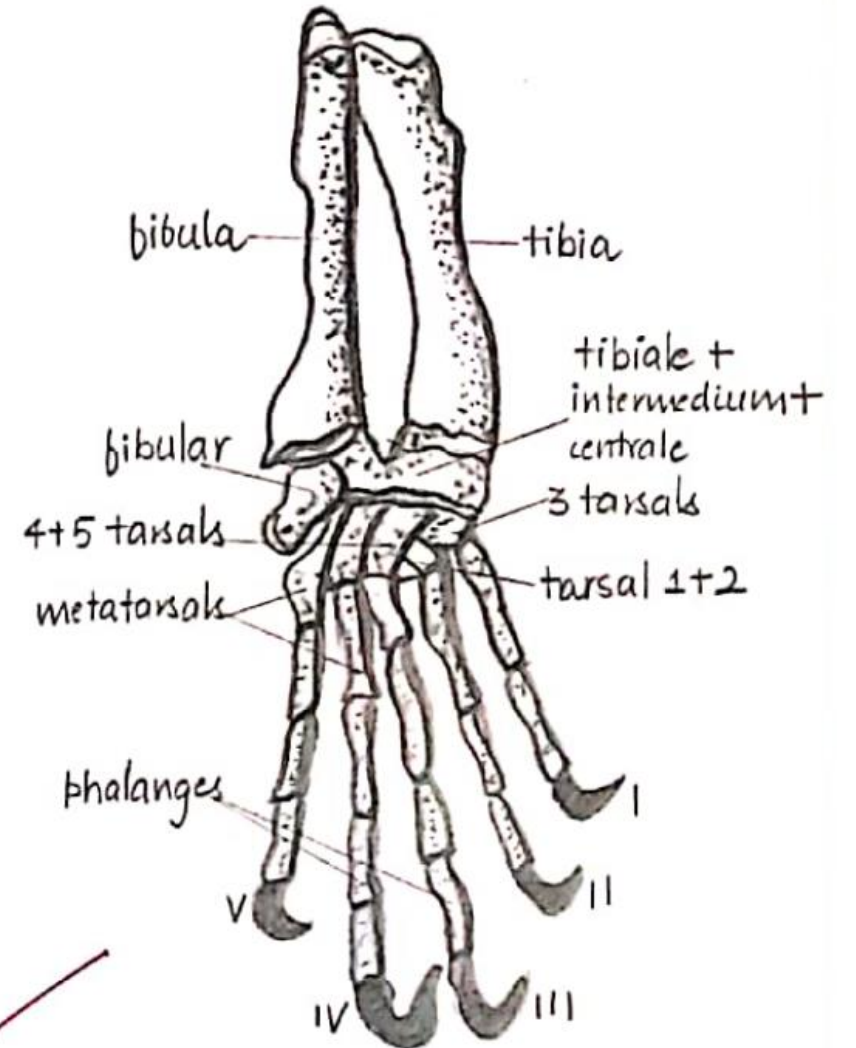
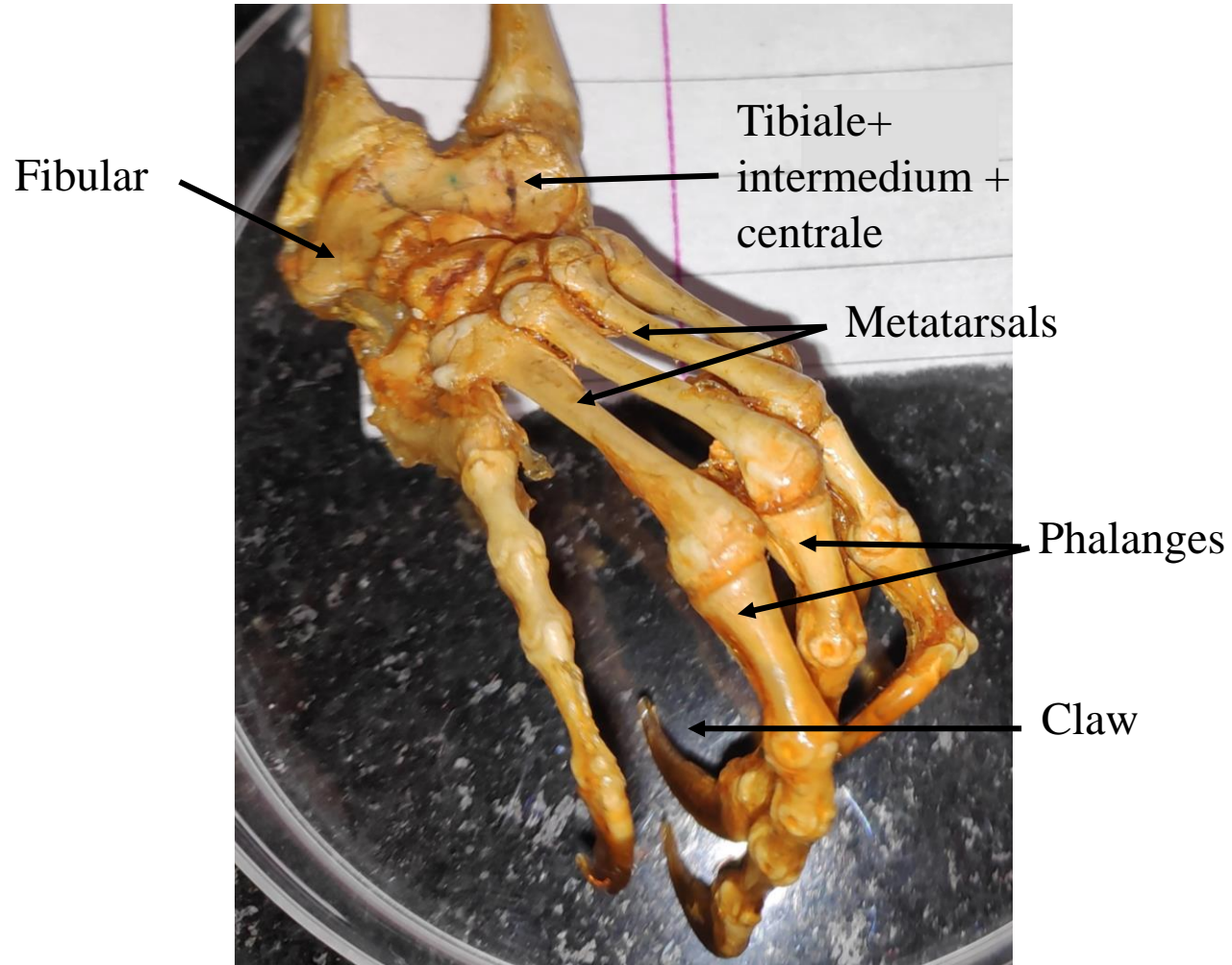
Femur



Tibia and Fibula

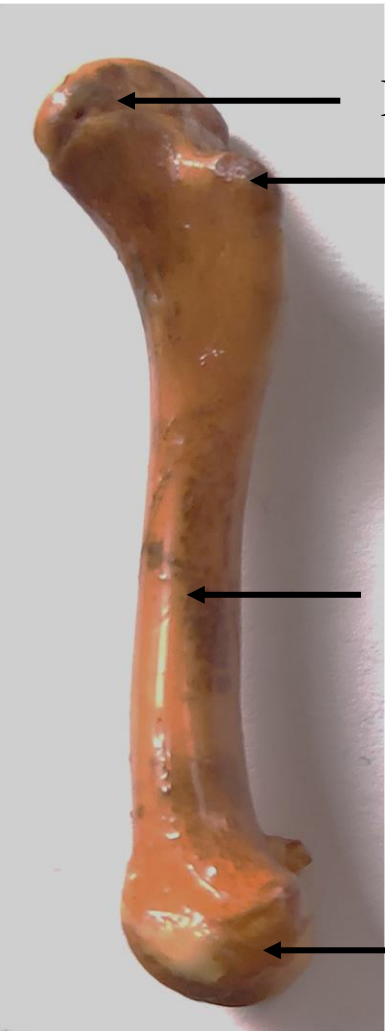


Bones of Foot



Hind Limbs

Femur



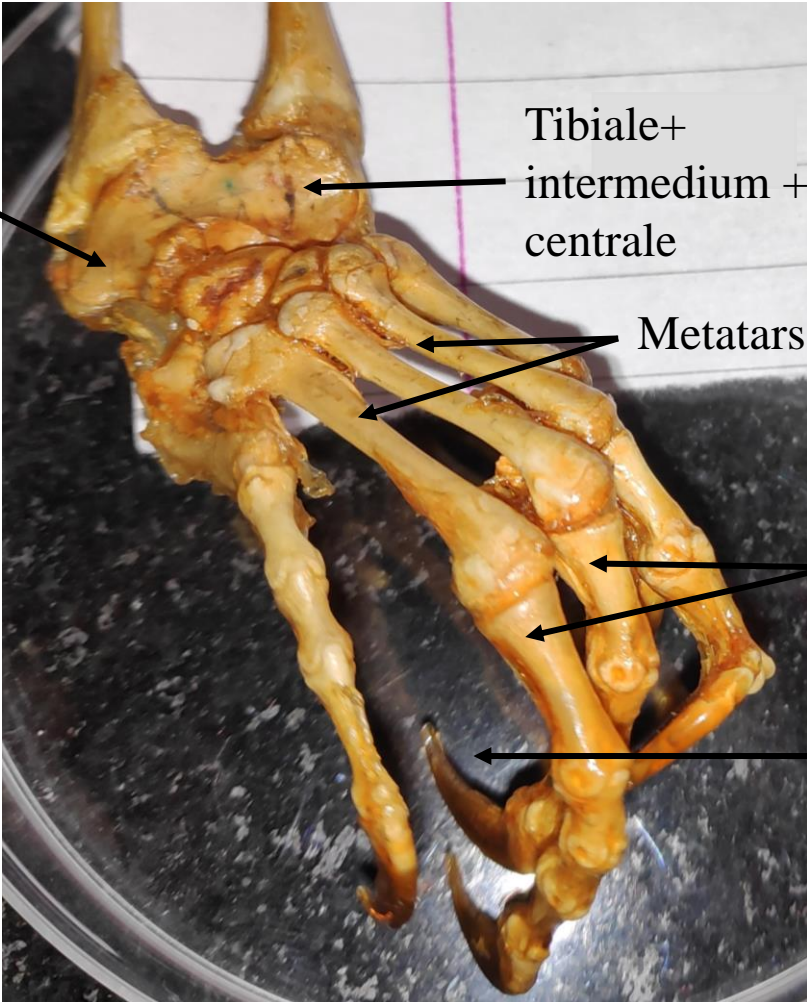
Head
Greater Trochanter
Shaft
Condyles

Tibia and Fibula



Fibular
Tibia

Foot



Tibiale+intermedium+centrale
Metatarsals
Phalange
Claw

Attachments of Pelvic girdle, Femur, Tibia Fibula and Bones of Foot

