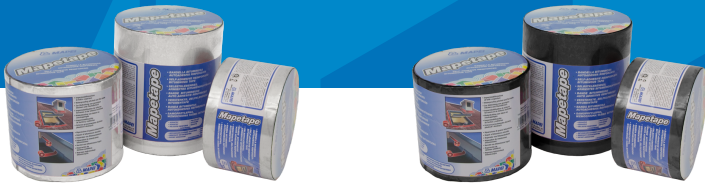


MAPETAPE

Cold-applied self-adhesive tape for sealing and waterproofing overlapping joints and cracks. Available in various widths (50, 100, 150 and 200 mm) and coloured finishes (aluminium, lead).



WHERE TO USE

Mapetape is a cold-applied, self-adhesive bituminous tape used for waterproofing and sealing roofs, flat roofs, sandwich panels, cracks and gaps, joints of pipes and gutters in civil and industrial buildings. Ideal for maintenance work and repairs to roofs and flat roofs.

Some application examples

- Protecting metal, plastic, fibre-cement, roofs and flat roofs in general.
- Sealing window and door fittings, skylights, parapets, construction features and glass and plastic structures.
- Repairing tiles, gutters, bituminous membranes, paved surfaces and metal tubes.

ADVANTAGES

- Quick and easy application. No heat, naked flames or special tools required
- Immediate waterproofing of construction joints, cracks and uneven areas
- Self-adhesive tape, easily adaptable even on complex shapes
- Multiple uses for emergency or permanent applications on roofs and coverings

TECHNICAL CHARACTERISTICS

Mapetape is a sealing tape comprising polymer based bitumen and laminated to a thin strip of pre-painted metal (aluminium or lead colour).

The self-adhesive side is protected with a removable film of silicon.

RECOMMENDATIONS

- **Mapetape** is not suitable for sealing against water under pressure.
- If applied when the temperature of the substrate or of the self-adhesive tape is less than +15°C, warm them up with hot air.
- If applied on surfaces with a slope of more than 45°, we recommend checking that the maximum working temperature of **Mapetape** will not exceed +65°C.
- The bitumen in the tape may discolour plastic or natural stone.
- Do not apply **Mapetape** on substrates with rising damp or bleeding.

- Substrates must be dry when applying **Mapetape**.

APPLICATION PROCEDURE

Remove all detached or loose parts manually or mechanically, such as form-release compounds, cement laitance, old paint, rust, mildew and dust.

Substrates must be clean, compact and dry when applying the tape.

On substrates with a particularly absorbent or inconsistent surface, apply a suitable MAPEI primer beforehand: since there are numerous different application conditions, consult our Technical Services Department beforehand to get the most suitable, personalised advice.

Choose the most appropriate version of **Mapetape** self-adhesive bituminous tape according to the width and colour of finish required. Cut the **Mapetape** to the length required. Remove the film of silicon from the adhesive side and position the tape so that it overlaps the construction feature to be waterproofed. Press the tape with a roller or soft rag so that it adheres completely to the surface of the substrate, especially in the areas with different levels.

Overlap the joints in the strips of **Mapetape** by at least 5 cm.

Heating **Mapetape** with hot air makes it easier to shape and adhere.

When sealing complicated shapes (circular crowns, horizontal/vertical hems, etc.), we recommend carrying out preliminary tests with **Mapetape** without removing the film of silicon. Where necessary, place various pieces of tape alongside each other or cut them to shape and overlap them to get the best cover.

CONSUMPTION

In metres.

CLEANING

Remove traces of bitumen with normal synthetic thinners or nitrate.

PACKAGING and SIZES

Colour	Width of tape	Length of tape	Thickness of tape	Number of rolls per box	Metres per box
aluminium	100 mm	10 m	1.5 mm	6	60
	150 mm			4	40
	200 mm			2	20
lead	100 mm	10 m	1.5 mm	6	60
	150 mm			4	40
	200 mm			2	20

COLOURS

Support: black self-adhesive bituminous tape with a removable, protective film of silicon.

Upper surface: pre-painted metallic strip (aluminium or lead colour).

STORAGE

24 months in its original packaging at a temperature of +5°C to +30°C away from direct sunlight and damp. Withstands frost.

SAFETY INSTRUCTIONS FOR PREPARATION AND APPLICATION

Mapetape is an article and referring to the current European regulations (Reg. 1906/2007/CE - REACH) does not require the preparation of the material safety data sheet. During its use, it is recommended to wear gloves and goggles and follow the safety requirements of the workplace.

PRODUCT FOR PROFESSIONAL USE.

TECHNICAL DATA (typical values)

PRODUCT IDENTITY

Appearance:	self-adhesive bitumen and polymer-based tape protected on the surface with a strip pre-painted aluminium
Colour:	– support: black – finish: aluminium, lead
Total thickness::	1.5 mm
Dry substances content (%):	100
Density (g/cm ³):	1.5
Elongation at failure (longitudinal or transversal) (EN 12311-1):	> 20%
Longitudinal or transversal tensile strength (EN 12311-1):	> 200N/50 mm
Fire classification:	B2 according to DIN 4102
Application temperature:	from +5°C to +45°C
In service temperature range:	– from -20°C to +80°C (application on horizontal surfaces) – from -20°C to +65°C (application on vertical surfaces or surfaces with a slope of more than 45°)

WARNING

Although the technical details and recommendations contained in this product data sheet correspond to the best of our knowledge and experience, all the above information must, in every case, be taken as merely indicative and subject to confirmation after long-term practical application; for this reason, anyone who intends to use the product must ensure beforehand that it is suitable for the envisaged application. In every case, the user alone is fully responsible for any consequences deriving from the use of the product.

Please refer to the current version of the Technical Data Sheet, available from our website www.mapei.com

LEGAL NOTICE

The contents of this Technical Data Sheet ("TDS") may be copied into another project-related document, but the resulting document shall not supplement or replace requirements per the TDS in force at the time of the MAPEI product installation. The most up-to-date TDS can be downloaded from our website, www.mapei.com. ANY ALTERATION TO THE WORDING OR REQUIREMENTS CONTAINED OR DERIVED FROM THIS TDS EXCLUDES THE RESPONSIBILITY OF MAPEI.

437-10-2023 en (IT)

Any reproduction of texts, photos and illustrations published here is prohibited and subject to prosecution

