

Activities & potential areas of cooperation between **cetecom advanced** and UdS “Entrepreneurial Cyber Security”

WHO WE ARE... cetecom advanced GmbH located in Saarbruecken with currently almost 200 employees is an internationally operating test lab for products of nearly any industry, from A as Automotive to Z as Zigbee applications. cetecom advanced's services include regulatory testing and certification according to international requirements or specific industry regimes in the fields of Electromagnetic Compatibility, Radio, Environmental Simulation, Electrical Safety, Acoustics, Battery Testing and Payment & Identity.



As a holder of various accreditations for both contact and contactless applications, cetecom advanced offers consulting, testing and certification services for Banking Applications, Mobile Payment and mPOS solutions including analog test bench, protocol and application testing to meet the specific security requirements in the highly sensitive area of payment & identification.

The process of making products available on international markets demands to prove compliance to the current regulatory requirements in the targeted countries. **cetecom advanced** supports in managing the conformity processes all around the world – whether it is the European Union, the United States, Asia Pacific or any other of more than 180 countries.

More than 20 years of experience stand for the fact we are a very reliable partner for our customers.

cetecom advanced accelerates your business...
-from the first thought to implementation
-from science to the market

Please let us introduce our main business sectors for a potential cooperation...

HOW WE COULD COOPERATE

cetecom advanced can offer and support you with access to markets, customer relationship, developing new business models, marketing – basically to bring your business from university to the market – from thought to implementation.

cetecom advanced can support you to get sponsorship through our shareholder (RW TÜV Stiftung) for a professorship.

cetecom advanced could support with resources and infrastructure to accelerate a spinoff in cyber security with a network of international tech companies.

cetecom advanced shareholder RWTÜV is continuously expanding their company portfolio and could support for funding and investments.

HOME AUTOMATION / IOT

cetecom advanced received a request from German Federal Cyber Security Authority (BSI) to cooperate in development of a TR (Technische Richtlinie - BSI policy).

MEDICAL PRODUCTS / EQUIPMENT

cetecom advanced has market access to a wide range of medical product manufacturers and their products which contain highly sensible personal data (e. g. implants, pacemakers, hearing aids...). Possible requests from this industry are in penetration testing and Cybersecurity concept consulting.

ELECTRONIC PASSPORTS & GERMAN ID-CARD

cetecom advanced is the only accredited laboratory for German Federal Cyber Security Authority (BSI) to measure and certify Electronic Passports and German ID Cards on the lower physical layer.

Activities & potential areas of cooperation between **cetecom advanced** and UdS “**Entrepreneurial Cyber Security**”

AUTOMOTIVE

cetecom advanced has a cooperation through RWTÜV Stiftung (part of the main shareholder) with the DFKI sponsoring research in radar simulation technology for autonomous driving systems.

cetecom advanced has customer requests to certify secure motor controller devices on secure platforms for RF technology.

cetecom advanced joined CCC (Car Connectivity Consortium) to work with different partners on the Digital Key Applet which represents the secure remote car key in the future based on BLE, UWB and NFC radio technology.

TRAININGS

cetecom advanced works together with wearable manufacturers and trains their engineers to implement digital secure payment into their products and to certify them.

BIOMETRICS

cetecom advanced has a close cooperation with well-known card manufacturers. We developed a fingerprint sensor evaluation process to ensure the new plastic credit cards with embedded fingerprint sensor and their algorithm developed by our clients have a high performance in FMR (False match rate), FNMR (False non match rate), FTE (Failure to enroll) and to check the security of the sensor against attacks.

cetecom advanced recently started an internal research project of facial recognition spoofing attacks against current available algorithms for payment industry stakeholders.

cetecom advanced received a request for setting-up synthetic fingerprint database generated by an AI system.

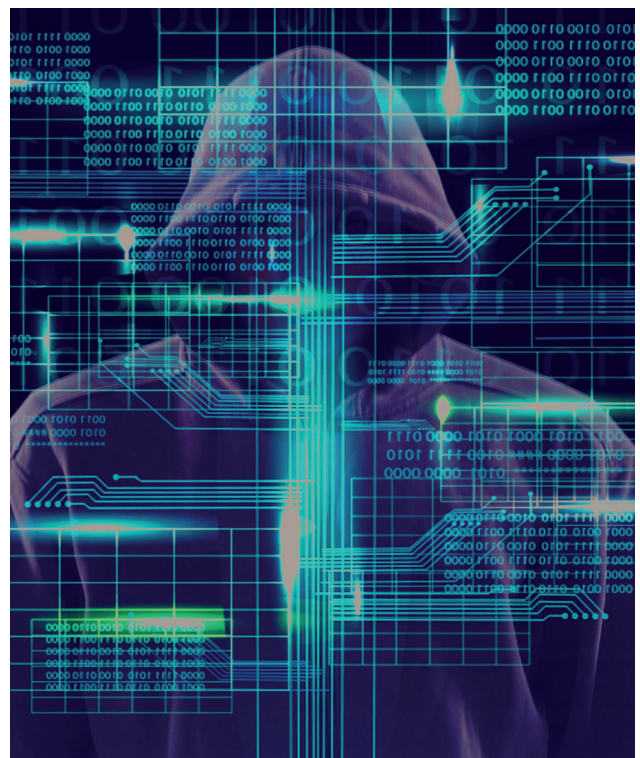
cetecom advanced is working currently on a dry run with a renowned search engine provider on facial recognition spoofing attacks against current mobile phone devices on the market.

PAYMENT TERMINAL

cetecom advanced is working closely with very well known credit card providers to develop a process for securing Terminal devices against relay attacks on the protocol level.

PAYMENT WEARABLES

cetecom advanced is working closely with their customers to certify products even if these products are market innovations in new form factors or applications, like Biometric Key ring, Biometric Sensor-On-Card products, identification by human pulse devices...



For more information and to discuss cooperation opportunities, please contact us directly:

- Andreas EHRE,
Managing Director
andreas.ehre@cetecomadvanced.com
+49 681 598 8552
- Steven BECKER,
Lab Manager, Smart Card Technologies
steven.becker@cetecomadvanced.com
+49 681 598 8631

This information is confidential and exclusively to be used between UdS (Entrepreneurial “Cyber Security”) and cetecom advanced GmbH to promote potential cooperations.