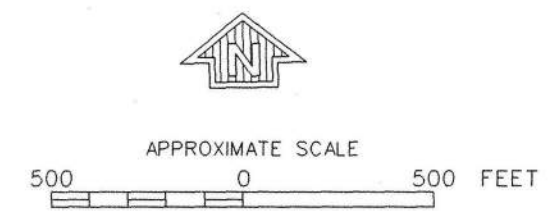


00' 00"
73° 50' 37.5"

JOINS PANEL 0552

Town of Mal
360720



NATIONAL FLOOD INSURANCE PROGRAM

FIRM
FLOOD INSURANCE RATE MAP

**SARATOGA COUNTY,
NEW YORK
(ALL JURISDICTIONS)**

PANEL 439 OF 693
(SEE MAP INDEX FOR PANELS NOT PRINTED)

CONTAINS:

COMMUNITY	NUMBER	PANEL	SUFFIX
BALLSTON TOWN OF	36071	0439	E
BALLSTON SPA VILLAGE OF	36070	0439	E
MALTA TOWN OF	360720	0439	E
MILTON TOWN OF	360722	0439	E
SARATOGA SPRINGS CITY OF	36078	0439	E

Notice to User: The MAP NUMBER shown below should be used when placing map orders; the COMMUNITY NUMBER shown above should be used on insurance applications for the subject community.

MAP NUMBER
36091C0439 E

EFFECTIVE DATE:
AUGUST 16, 1995

Federal Emergency Management Agency

**Champlain Hudson Power Express
FEMA FIRM MAP 37**

This is an official FIRMette showing a portion of the above-referenced flood map created from the MSC FIRMette Web tool. This map does not reflect changes or amendments which may have been made subsequent to the date on the title block. For additional information about how to make sure the map is current, please see the Flood Hazard Mapping Updates Overview Fact Sheet available on the FEMA Flood Map Service Center home page at <https://msc.fema.gov>.

Appendix E
Grading and Erosion Sediment
Control Plans and Details

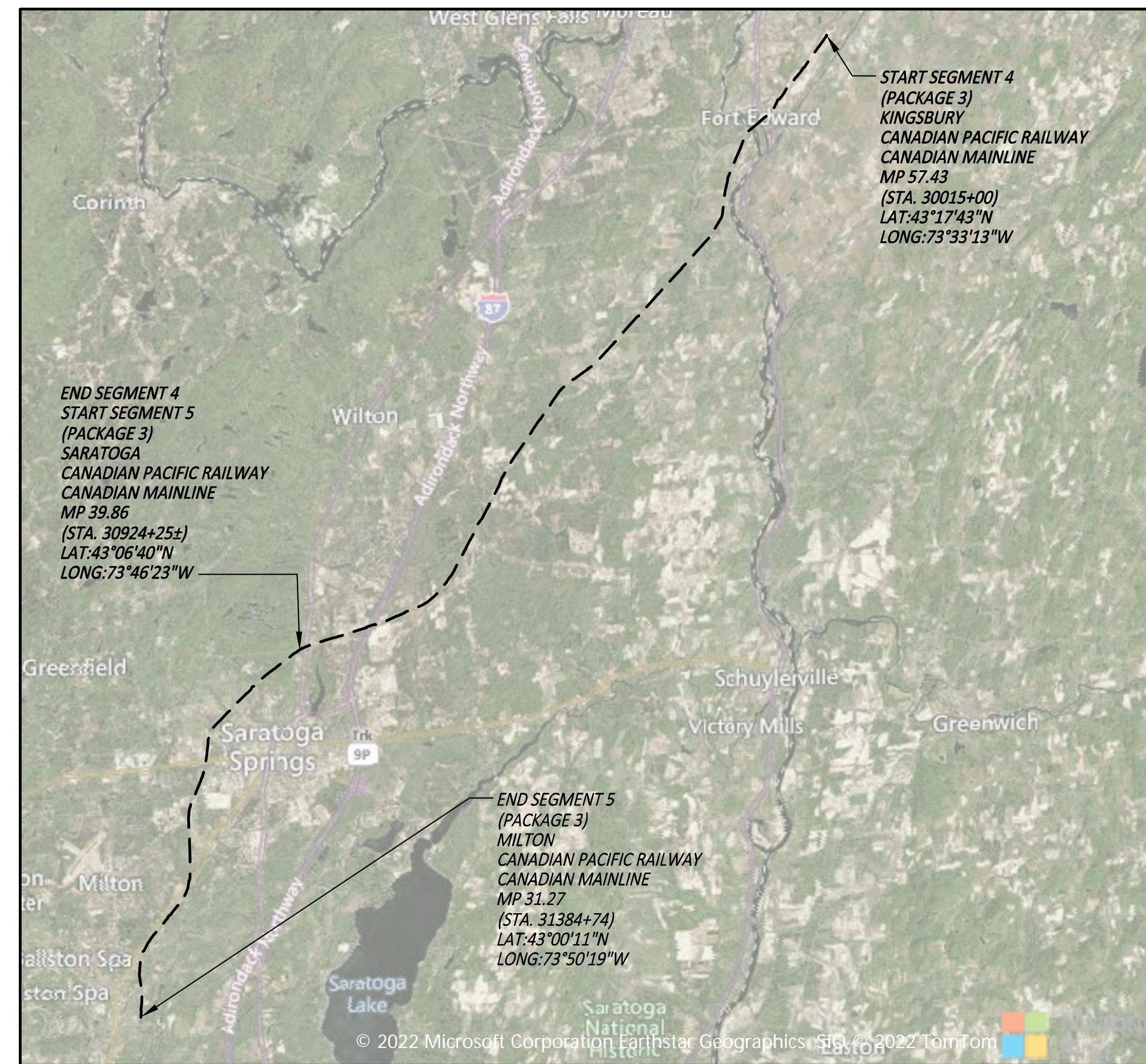
CHAMPLAIN HUDSON POWER EXPRESS

SEGMENTS 4 & 5 (PACKAGE 3) - FORT EDWARD TO MILTON

SARATOGA COUNTY, NEW YORK

FINAL EM&CP SUBMISSION

(APRIL 12, 2023)



SITE LOCATION MAP
SCALE: 1" = 5000'



IT IS A VIOLATION OF LAW FOR ANY PERSON, UNLESS THEY ARE ACTING UNDER THE DIRECTION OF A LICENSED PROFESSIONAL ENGINEER, ARCHITECT, LANDSCAPE ARCHITECT OR LAND SURVEYOR TO ALTER AN ITEM IN ANY WAY. IF AN ITEM BEARING THE STAMP OF A LICENSED PROFESSIONAL IS ALTERED, THE ALTERING ENGINEER, ARCHITECT, LANDSCAPE ARCHITECT OR LAND SURVEYOR SHALL STAMP THE DOCUMENT AND INCLUDE THE NOTATION "ALTERED BY" FOLLOWED BY THEIR SIGNATURE, THE DATE OF SUCH ALTERATION, AND A SPECIFIC DESCRIPTION OF THE ALTERATION.

No.	DATE	SUBMITTAL / REVISION DESCRIPTION	DB	APP
0	04/05/2023	FINAL EM&CP SUBMISSION	JJE	JPR

CHAMPLAIN HUDSON POWER EXPRESS
SEGMENTS 4 & 5 (PACKAGE 3) - CP: FORT EDWARD TO MILTON
COVER SHEET

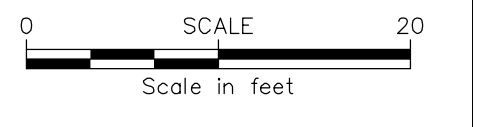
KIEWIT PROJECT NO.	21162
CHA PROJECT NO.	086076
DRAWING NO.	G-000
DATE	04/05/2023
SH.NO.	X

DRAWN BY: JJE DESIGNED BY: JTM APPROVED BY: JPR SCALE AS NOTED DATE 04/05/2023

File: V:\PROJECTS\ANY\6\066076\000\09_DESIGN\DRAWINGS\01_SHEETS\DESIGN PACKAGE 3\066076_P3 - G-000 COVER SHEET.DWG Saved: 4/11/2023 3:25:49 PM Plotted: 4/12/2023 10:47:58 AM Current User: Bouillon, Hugo LastSavedBy: 7895



ACCESS DRIVE AT STA. 30085+00
SCALE: 1" = 20'



IT IS A VIOLATION OF LAW FOR ANY PERSON, UNLESS THEY ARE ACTING UNDER THE DIRECTION OF A LICENSED PROFESSIONAL ENGINEER, ARCHITECT, LANDSCAPE ARCHITECT OR LAND SURVEYOR TO ALTER AN ITEM IN ANY WAY. IF AN ITEM BEARING THE STAMP OF A LICENSED PROFESSIONAL IS ALTERED, THE ALTERING ENGINEER, ARCHITECT, LANDSCAPE ARCHITECT OR LAND SURVEYOR SHALL STAMP THE DOCUMENT AND INCLUDE THE NOTATION "ALTERED BY" FOLLOWED BY THEIR SIGNATURE, THE DATE OF SUCH ALTERATION, AND A SPECIFIC DESCRIPTION OF THE ALTERATION.

No.	DATE	SUBMITTAL / REVISION DESCRIPTION	DB	APP
0	04/05/2023	FINAL EM&CP SUBMISSION	JJE	JPR

CHAMPLAIN HUDSON POWER EXPRESS
SEGMENTS 4 & 5 (PACKAGE 3) - CP: FORT EDWARD TO MILTON
ACCESS DRIVE AT STA. 30085+00

DRAWN BY: JJE DESIGNED BY: JTM APPROVED BY: JPR SCALE AS NOTED
REV. NO. DATE SH.NO.

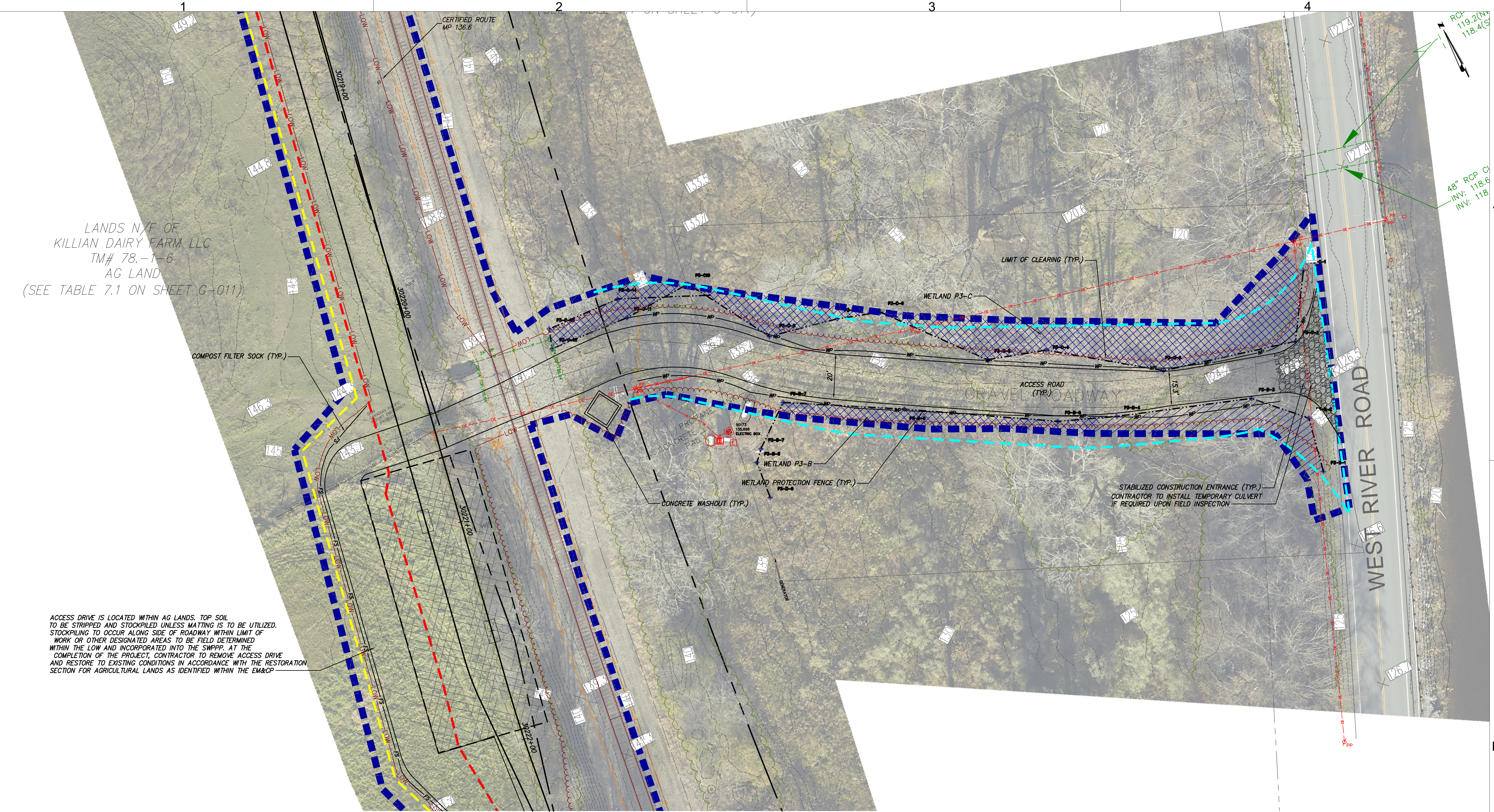
KIEWIT PROJECT NO.	21162
CHA PROJECT NO.	086076
DRAWING NO.	C-210A
DATE	04/05/2023

File: V:\PROJECTS\ANY\6\066076\00\09_DESIGN\DRAWINGS\01_SHEETS\DESIGN PACKAGE 3\0-210_ACCESS DRIVE AT STA. 30085+00.DWG Saved: 4/12/2023 9:50:07 AM Plotted: 4/12/2023 10:34:11 AM Current User: Moore, Elizabeth LastSavedBy: 8314

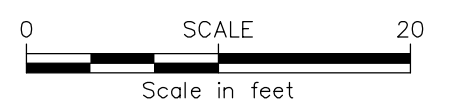
File: V:\PROJECTS\ANY\6\066076\000\09_DESIGN\DRAWINGS\01_SHEETS\DESIGN PACKAGE 3\066076_P3 - C-213_DWG Saved: 4/12/2023 9:44:58 AM Plotted: 4/12/2023 10:35:17 AM Current User: Moore, Elizabeth LastSavedBy: 8314

LANDS N/F OF
 KILLIAN DAIRY FARM, LLC
 TM# 78.-1-6
 AG LAND
 (SEE TABLE 7.1 ON SHEET G-011)

ACCESS DRIVE IS LOCATED WITHIN AG LANDS. TOP SOIL
 TO BE STRIPPED AND STOCKPILED UNLESS MATTING IS TO BE UTILIZED.
 STOCKPILING TO OCCUR ALONG SIDE OF ROADWAY WITHIN LIMIT OF
 WORK OR OTHER DESIGNATED AREAS TO BE FIELD DETERMINED
 WITHIN THE LOW AND INCORPORATED INTO THE SWPPP. AT THE
 COMPLETION OF THE PROJECT, CONTRACTOR TO REMOVE ACCESS DRIVE
 AND RESTORE TO EXISTING CONDITIONS IN ACCORDANCE WITH THE RESTORATION
 SECTION FOR AGRICULTURAL LANDS AS IDENTIFIED WITHIN THE EM&CP



ACCESS DRIVE AT STA. 30220+00
 SCALE: 1" = 20'



IT IS A VIOLATION OF LAW FOR ANY PERSON, UNLESS THEY
 ARE ACTING UNDER THE DIRECTION OF A LICENSED
 PROFESSIONAL ENGINEER, ARCHITECT, LANDSCAPE ARCHITECT
 OR LAND SURVEYOR TO ALTER AN ITEM IN ANY WAY. IF AN
 ITEM BEARING THE STAMP OF A LICENSED PROFESSIONAL IS
 ALTERED, THE ALTERING ENGINEER, ARCHITECT, LANDSCAPE
 ARCHITECT OR LAND SURVEYOR SHALL STAMP THE DOCUMENT
 AND INCLUDE THE NOTATION "ALTERED BY" FOLLOWED BY
 THEIR SIGNATURE, THE DATE OF SUCH ALTERATION, AND A
 SPECIFIC DESCRIPTION OF THE ALTERATION.

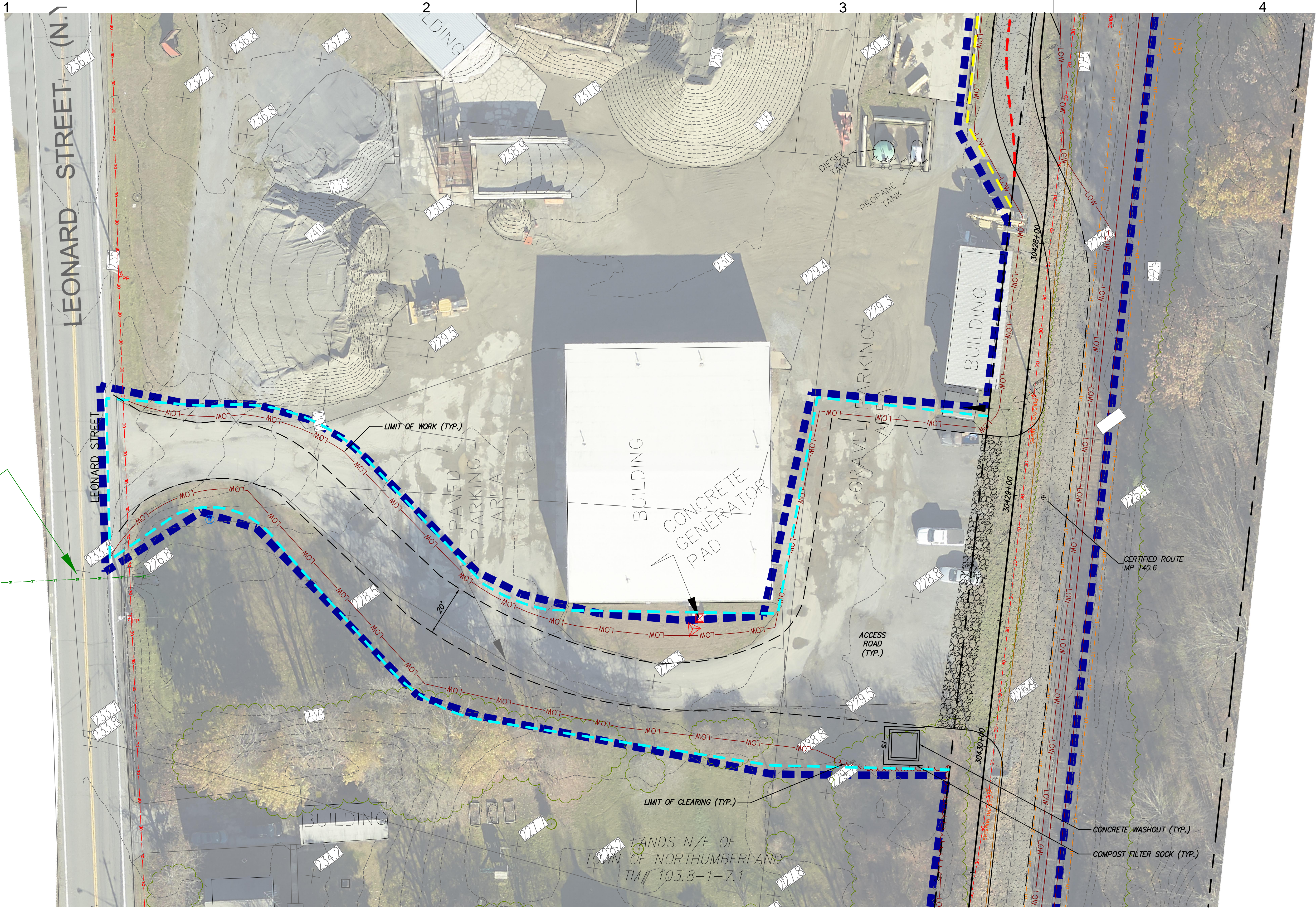
No.	DATE	SUBMITTAL / REVISION DESCRIPTION	DB	APP
0	04/05/2023	FINAL EM&CP SUBMISSION	JJE	JPR

CHAMPLAIN HUDSON POWER EXPRESS
SEGMENTS 4 & 5 (PACKAGE 3) - CP: FORT EDWARD TO MILTON
ACCESS DRIVE AT STA. 30220+00

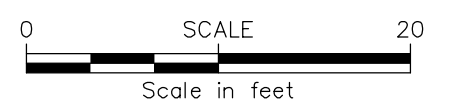
KIEWIT PROJECT NO.	21162
CHA PROJECT NO.	086076
DRAWING NO.	C-213
DATE	04/05/2023
SH.NO.	

DRAWN BY: JJE DESIGNED BY: JTM APPROVED BY: JPR SCALE AS NOTED

File: V:\PROJECTS\ANY\6\066076\000\09_DESIGN\DRAWINGS\01_SHEETS\DESIGN PACKAGE_3\066076_P3 - C-214.DWG Saved: 4/12/2023 9:54:59 AM Plotted: 4/12/2023 10:36:18 AM Current User: Morel, Elizabeth LastSavedBy: 8314



ACCESS DRIVE AT STA. 30431+00
SCALE: 1" = 20'



IT IS A VIOLATION OF LAW FOR ANY PERSON, UNLESS THEY ARE ACTING UNDER THE DIRECTION OF A LICENSED PROFESSIONAL ENGINEER, ARCHITECT, LANDSCAPE ARCHITECT OR LAND SURVEYOR TO ALTER AN ITEM IN ANY WAY. IF AN ITEM BEARING THE STAMP OF A LICENSED PROFESSIONAL IS ALTERED, THE ALTERING ENGINEER, ARCHITECT, LANDSCAPE ARCHITECT OR LAND SURVEYOR SHALL STAMP THE DOCUMENT AND INCLUDE THE NOTATION "ALTERED BY" FOLLOWED BY THEIR SIGNATURE, THE DATE OF SUCH ALTERATION, AND A SPECIFIC DESCRIPTION OF THE ALTERATION.

No.	DATE	SUBMITTAL / REVISION DESCRIPTION	DB	APP
0	04/05/2023	FINAL EM&CP SUBMISSION	JJE	JPR

CHAMPLAIN HUDSON POWER EXPRESS
SEGMENTS 4 & 5 (PACKAGE 3) - CP: FORT EDWARD TO MILTON
ACCESS DRIVE AT STA. 30431+00

KIEWIT PROJECT NO.	21162
CHA PROJECT NO.	086076
DRAWING NO.	C-214
DATE	04/05/2023
SH.NO.	

DRAWN BY: JJE DESIGNED BY: JTM APPROVED BY: JPR SCALE AS NOTED

