

UTM1925

USB-Multi I/O Cable



User Manual

Version 1.1

Introduction

Thank you for purchasing USB- Multi I/O Cable. This unique cable adapter allows you to attach your computer to **Serial port** interface and **parallel printer** device through the USB port and get faster printing results.

The USB to Multi I/O Cable is your fast solution to utilize the peripheral with serial port and Parallel port in an easy-to-use environment such as plug-&-play and hot swap function.

Serial Port support - This cable provides ideal connections to Modems, PDA, Digital Camera, Label printer or ISDN terminal adapters with over 1Mbps data transfer rate.

Parallel Port support - allows your PC to print with parallel printer devices connected through the USB port. Just plug the USB connector of the cable into the USB port of your PC, and the other end into the centronics connector of the standard parallel printer.

Package Content

1. Hardware: USB- Multi I/O Cable
2. CD Driver
3. User's Manual

Product Features

1. USB specification revision 1.1 compliant
2. USB Printer Class Specification 1.0 compliant
3. USB full speed (12Mbps) with bus powered
4. True Bi-directional parallel communication

System Requirements

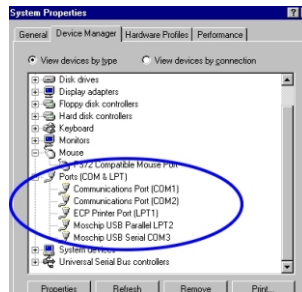
1. IBM PC 486DX4-100 MHz CPU or higher or compatible system
2. Available USB port
3. CD-ROM / DVD-ROM drive installed.
4. Windows 98SE / ME / 2000 / XP

Driver Installation (WIN98&ME)

Follow the steps below on installing the USB to Serial Bridge Cable for the first time:

1. Power on both computers where you will connect the USB to Serial Bridge Cable and make sure that the USB port is enabled and working properly.
2. Plug in the USB cable into the USB port and Windows will detect an USB Device and run the **Add New Hardware Wizard** to assist you in setting up the new USB Composite Device.
3. Insert the Driver CD into the CD-ROM device and click **Next** to continue:
 - a. Select **Search for the best driver for your device** and click **Next**.
 - b. Select **CD-ROM driver** or **Specify a location** and click **Browse**. Change the folder to your CD-ROM drive (**D:\USB to IO\UTM1925\win98&me**) and click **OK**.
 - c. Double check the directory that Windows prompts. Click **Next**.
 - d. Windows will detect the driver (**USB2SER.inf**) and shows the **USB to Serial Bridge Cable**. Click **NEXT** to continue until installation is complete.
 - e. Click **Next** to continue and let Windows copy the needed files to your disk. Click **Finish** while installation is complete.

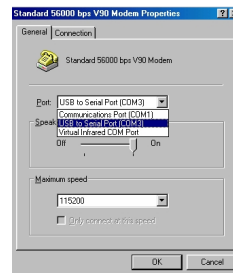
- f. After installing, the System will generate an additional COM Port, USB to Serial Port (COM3) for the connection to RS232 Serial Device.



Setting Up the Rs232 serial Device

Follow the steps below on how to connect your RS232 Serial Device (ie: Modem) to the USB port of your PC:

1. Turn off your Modem. Plug the D-Sub 9 connector of the USB to Serial Bridge Cable into your Modem. If you have a Serial cable connected to it, remove the cable and replace it with the USB to Serial Bridge Cable.
2. Turn on the Modem afterwards.
3. Turn on your computer and plug in the USB connector of the USB to Serial Bridge Cable into the USB port.
4. If you have already installed a Modem device before, click Start, Settings, Modems. Open Modems Properties, select the Modem, click Properties. In General tab, please change the **Port** value to **USB to Serial Port (COM3)**.
5. After finishing these processes, you can use USB to Serial Bridge Cable to connect RS232 Serial 56K FAX Modem and execute the Dial-up function to connect Internet, and send the FAX with the FAX software(ie: Microsoft FAX).

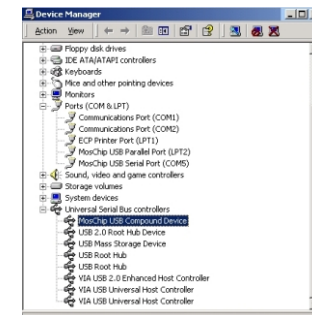


Driver Installation(WIN2000)

Follow the steps below to install driver of USB-Serial Bridge cable:

1. Power on your computer and make sure that the USB port is enabled and working properly. Please insert the Driver CD into the CD-ROM device.
2. Plug in the USB-Serial cable into the USB port and Windows 2000 will detect the device and installing the **USB to Serial Bridge Cable** automatically.

3. When Windows finished installing the software .you have to check the Control Panel-System-Hardware-Device Manager-Ports [COM & LPT1] it will show an **USB to Serial Port [COM3]**.



Disclaimer

Information in this document is subject to change without notice. The manufacturer doesn't make any representations or warranties (implied or otherwise) regarding the accuracy and completeness of this document and shall in no event be liable for any loss of profit or any other commercial damage, including but not limited to special, incidental, consequential, or other damages.

No part of this document may be reproduced or transmitted in any form by any means, electronic or mechanical, including photocopying, recording or information recording and retrieval systems without the express written permission of the manufacturer.

All brand names and product names used in this document are trademarks, or registered trademarks of their respective holders.

Driver Installation(WIN98&ME)

Follow the steps below to install driver of USB-Multi I/O cable:

1. Power on your computer and make sure that the USB port is enabled and working properly.
2. Plug in the USB-Multi I/O cable into the USB port and Windows will detect the devices and run the **Add New Hardware Wizard** will appear. Click **Next**.
3. Insert the USB- Multi I/O cable driver into the CD-ROM drive and click Next to continue. Please click **Search for the best driver for your device** and click search driver from the **CD-ROM devices** or **specify a location** and **Browse D:\USB to IO\UTM1925\win98&me**. (D: represents CD-ROM)
4. Windows will detect the driver (**U2PAR.INF**) and shows the **USB-Multi I/O**. Click Next to continue installation.
5. Click **Next** to continue, to copy the needed files to your hard disk.
6. When Windows finished installing the software required for the new **USB-Multi I/O**, click **Finish**.

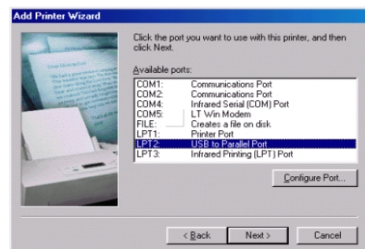
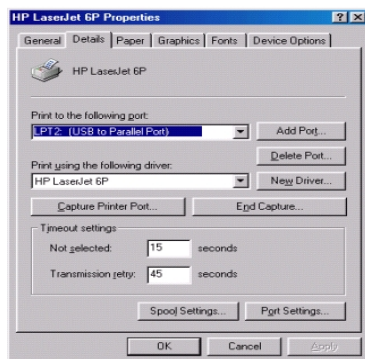
Setting Up the Printer Device

Follow the steps below on how to connect your printer to the USB port of your PC:

1. Turn off your printer. Plug the centronics connector of the USB- Multi I/O cable into your printer.
- * If you have a parallel cable which connected to it, remove the cable and replace it with the USB- Multi I/O cable. Turn on the printer afterwards.

UTM1925 USB-Multi I/O Cable

- Turn on your computer and plug in the USB connector of the USB- Multi I/O cable into the USB port.
- If you have already installed a printer device before, click Start, Settings, Printers. Click right button of your mouse on the default installed printer and click on Properties. The Properties dialog box of the installed printer will appear on your screen.
- Click the Details folder tab and change the printer port to **LPT2: (USB to 2222Parallel Port)**.
- If you do not have a printer installed yet, click on Start, Settings, Printers, Add Printer. The **Add Printer Wizard** will start and assist you in installing a new printer device. Select the printer
- Manufacturer and model name from the list provided by the wizard or use the printer driver diskette supplied with your printer.
- When prompted which port the printer will use, click on **LPT2: (USB to Parallel Port)**.
- Follow the succeeding instructions to complete the installation and also run **Print Test Page** to see if it can print without problems.



Driver Installation (WIN2000)

Follow the steps below to install driver of USB-Parallel printer cable:

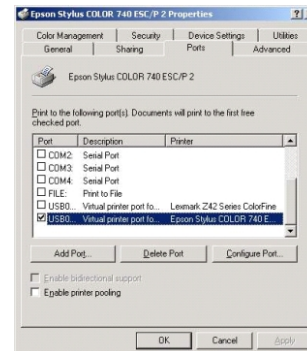
- Power on your computer and make sure that the USB port is enabled and working properly. Please insert the Driver CD into the CD-ROM device.
- Plug in the USB-Parallel cable into the USB port and Windows 2000 will detect the device and installing the **USB PRINTING SUPPORT** automatically.
- When Windows finished installing the software. you have to check the Control

Panel-System-Hardware-Device Manager-Universal Serial Bus Controller it will show an **USB Printing Support**.

Setting Up the Printer Device

Follow the steps below on how to connect your printer to the USB port of your PC:

- Turn off your printer. Plug the centronics connector of the USB-Parallel printer cable into your printer. If you have a parallel cable connected to it, remove the cable and replace it with the USB-Parallel printer cable.
- Turn on the printer afterwards.
- Turn on your computer and plug in the USB connector of the USB-Parallel printer cable into the USB port.
- If you have already installed a printer device before, click Start, Settings, Printers. Click right button of your mouse on the printer and click on **PORTS** to select the **USB0**.



- If you don't have a printer installed yet, click on Start, Settings, Printers, Add Printer. The **Add Printer Wizard** will start and assist you in installing a new printer device. Select the printer manufacturer and model name from the list provided by the wizard or use the printer driver diskette supplied with your printer.
- When prompted which port the printer will use, click on **USB0**.
- Follow the succeeding instructions to complete the installation and also run **Print Test Page** to see if it can print without problems.

FAQ

Q. Does my system support USB?

PC: USB is supported in Windows 98SE, Me, 2000 and XP, and not supported in NT4. USB is only supported in Windows 95 if you are running at least version 4.00.950B, and have installed the Windows 95 USB Supplement available from Microsoft. If you don't have USB sockets on your PC, try our 2 Port or 4 Port PCI to USB Upgrade card.

Q. Can I check the compatibility list for this product?

The USB to parallel printer converter works with most parallel port printers. It doesn't support multifunction printers, Zip drives, scanners or other parallel devices. In most cases, bi-directional features must be disabled for proper operation.

Q. You may get printing errors or a freeze if you do not disable bi-directional printer features. How do I disable parallel printing?

- Click Start...Click Settings...Double Click on Printers...Locate the printer in the list.
- Right Click on this printer and go into properties.
- Once you are in properties go to the Details box.
- The above port should say LPT2USB1 and the name of the printer beside it.
- At the bottom of the above box Click on Spool Settings and disable Bi-directional mode.
- Test.

* If the printer still is unable to print please contact the printer manufacture and request any updated drivers for this printer and USB.

Q. What if I have an HP DeskJet printing problem?

Problem: When printing using a HP DeskJet an error will pop up on the screen. The error says error writing to LPT2USBX...X meaning the number of USB converters you have installed. This error stays on the screen for about 5 seconds then the error will disappear. This will continue to occur until the document has finished printing. The document will print successfully.

Solution:

If you click print and leave the room, you will probably never see this error. To resolve it, you need to download the most current drivers.

Procedures:

The first thing you will need to do is go into the Control Panel and click on Add / Remove Programs. You will need to uninstall " USB to Parallel " , then reboot. Once the system boots up it will find New Hardware and try to reinstall this converter. When prompted for drivers, use the new drivers. You can download these drivers below.

Q. Will this USB to Parallel Converter work with my multifunction printer?

No, USB to Parallel currently supports uni-directional printing only.
Note: All other parallel devices such as scanners, tape drives and zip drives aren't supported.

Disclaimer

Information in this document is subject to change without notice. The manufacturer doesn't make any representations or warranties (implied or otherwise) regarding the accuracy and completeness of this document and shall in no event be liable for any loss of profit or any other commercial damage, including but not limited to special, incidental, consequential, or other damages.

No part of this document may be reproduced or transmitted in any form by any means, electronic or mechanical, including photocopying, recording or information recording and retrieval systems without the express written permission of the manufacturer.

All brand names and product names used in this document are trademarks, or registered trademarks of their respective holders.