

Intel® Express 330T Stackable Hub

User Guide



intel®

Year 2000 Capable

An Intel product, when used in accordance with its associated documentation, is “Year 2000 Capable” when, upon installation, it accurately stores, displays, processes, provides, and/or receives date data from, into, and between the twentieth and twenty-first centuries, including leap year calculations, provided that all other technology used in combination with said product properly exchanges date data with it.

Copyright © 1999, Intel Corporation. All rights reserved.
Intel Corporation, 5200 NE Elam Young Parkway, Hillsboro OR 97124-6497

Intel Corporation assumes no responsibility for errors or omissions in this manual. Nor does Intel make any commitment to update the information contained herein.

* Other product and corporate names may be trademarks of other companies and are used only for explanation and to the owners' benefit, without intent to infringe.

First Edition**April 1999****732041-001**

Contents

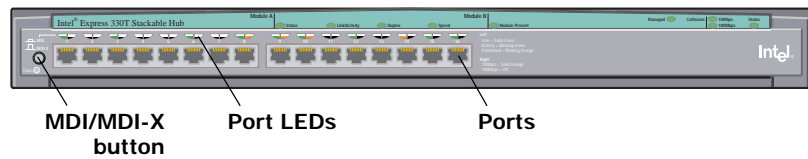
| | |
|---|-------------------|
| Express 330T Overview | 2 |
| Optional Modules | 3 |
| Understanding 330T Hubs | 4 |
| Port LEDs | 4 |
| Hub LEDs | 5 |
| Crossover Button | 5 |
| Connecting to Devices | 6 |
| Connection Guidelines | 6 |
| Daisy-chaining Hubs | 7 |
| Stacking Hubs | 7 |
| Optional Modules | 8 |
| Module Functions | 8 |
| Module A LEDs | 8 |
| Configuring Modules | 9 |
| Module B LEDs | 9 |
| Growing Your Network | 10 |
| Mixed 10Mbps and 100Mbps | 10 |
| Expanding the Network | 10 |
| Connecting Devices at Full Duplex | 11 |
| Extending the Network | 11 |
| Cabling Devices | 12 |
| Media Requirements | 12 |
| Straight-through vs. Crossover Cables | 12 |
| Testing a Cable | 13 |
| Frequently Asked Questions | 14 |
| Troubleshooting | 15 |
| Regulatory Information and Warnings | 16 |
| Limited Hardware Warranty | 19 |
| Intel Customer Support | Inside Back Cover |

Express 330T Overview

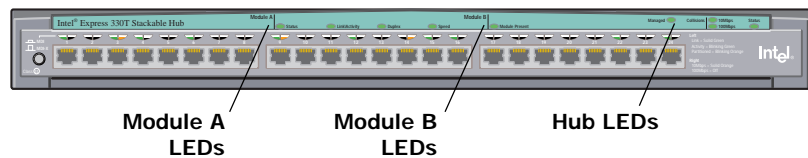
Features

This guide covers both the 16- and 24-port versions of the Intel® Express 330T Stackable Hub.

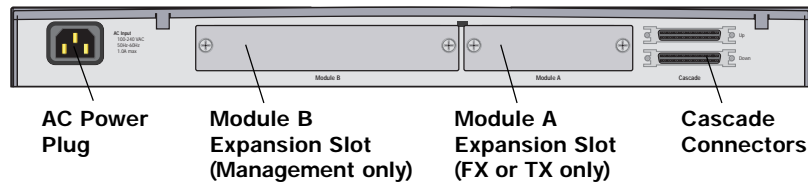
16-port 330T Hub (Product Code EE330TX16)



24-port 330T Hub (Product Code EE330TX24)



Back of 16- and 24-port 330T Hubs



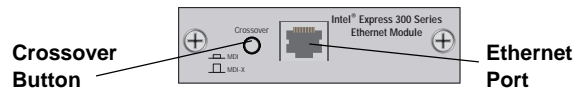
-
- Autosenses speed—10Mbps or 100Mbps *per port*.
 - Automatically bridges 10Mbps and 100Mbps segments.
 - Stack up to five Express 330T hubs (mixed 16- or 24-port).
 - Two expansion slots for optional management, TX, or FX modules.
 - Can be daisy-chained with another Express 330T hub (or any Class II hub) to expand port density (maximum of two hubs).
-

Optional Modules

Features

Both the 16- and 24- port versions of the Express 330T Stackable hubs can accept modules to provide additional functionality.

Ethernet Module (Product Code EE300EM)



- Connects to devices (such as a switch or server) at full duplex or half duplex.
 - Bridges 100Mbps segments to 10Mbps segments.
 - Can connect to other switches or hubs without a crossover cable.
 - Extends the network diameter by 100 meters.
-

Fiber Module (Product Code EE300FX)



- Connects to 100Base-FX devices (such as a switch or server) at full or half duplex.
 - Extends network diameter up to 160m (half duplex) or 2km (full duplex).
-

Management Module (Product Code EE300MM)

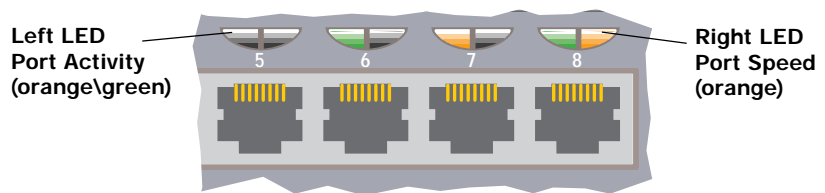


- Manage up to five hubs in a stack (mixed 16- or 24-port).
 - Connect to Local Management through serial port or Telnet session.
 - Graphical web-based management through the Embedded Web Server.
-

Understanding 330T Hubs

Port LEDs

The LEDs above each port indicate port status, individual port speed, and port activity.



| LED | Status | Meaning |
|-------|-----------------|--|
| Left | Solid green | Device linked. |
| | Blinking green | Receiving activity on that port. |
| | Blinking orange | Port auto-disabled (partitioned). See below. |
| | Solid orange | Port disabled by management (not applicable without optional Management Module). |
| | Off | No link detected. |
| Right | Solid orange | Device connected at 10Mbps. |
| | Off | Device connected at 100Mbps. |

Partitioned ports

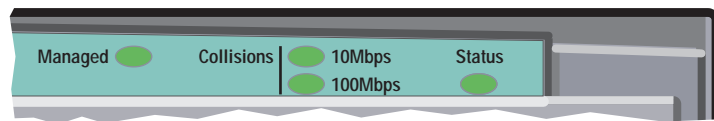
A port is automatically disabled (partitioned) by the hub when an invalid condition occurs, such as too many consecutive collisions.

Once the hub is able to transmit data to the port collision free, the hub automatically re-enables (unpartitions) the port. Clients are usually not affected by a partitioned port because the port is often unpartitioned very quickly.

Usually, a partitioned port indicates an overloaded network or a malfunctioning device (such as an adapter card) on the network. To alleviate an overloaded network, divide the network into smaller segments so that fewer devices share the same fixed amount of bandwidth.

Hub LEDs

The Express 330T hub LEDs are located above the port LEDs. These LEDs indicate the condition of the hub, collisions per segment, and whether a Management Module is present.



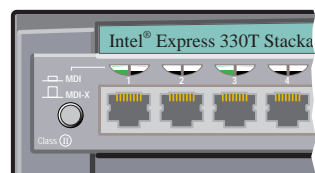
| LED | Status | Meaning |
|--------------------------|-------------------------|---|
| Managed | On | Hub is managed by the optional Management Module. |
| | Off | Hub is not being managed. |
| Collisions 10Mbps | Blinking | Collisions detected on 10Mbps segment. |
| | 100Mbps Blinking | Collisions detected on 100Mbps segment. |
| Status | On | Hub is receiving power. |
| | Off | Hub is not receiving power. |
| | Blinking | Diagnostics detected a failure on startup. |

Module LEDs

The other LEDs on the hub are related to the optional modules. For additional information about these LEDs, see pages 8 and 9.

Crossover Button

The Express 330T hubs have a button that toggles port 1 from MDI-X to MDI. This allows you to connect to a switch, or daisy-chain to another hub, without using a crossover cable. For more information, see pages 6-7 and 12-13.



Connecting to Devices

Connection Guidelines

General

- The Express 330T hub is capable of autosensing port speed and can operate at 10Mbps or 100Mbps per port. The hub matches the highest possible speed of an attached device.
- The ports on the Express 330T hub are half-duplex. To connect to a device at full duplex, you must use the optional Ethernet or Fiber Modules.
- To prevent a network loop, do not connect the Express 330T hub to the 10Mbps segment and 100Mbps segment simultaneously if the 10Mbps and 100Mbps segments are bridged externally (through a switch).
- In a stack of Express 330T hubs, only one bridge is active at a time. If that hub fails or is removed, the next hub automatically provides bridging for the entire stack.

Cabling

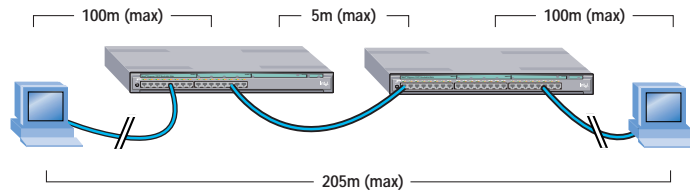
Note: For best performance use the shortest cables possible.

- Use Category 5 unshielded twisted-pair (CAT 5 UTP) cable when connecting 100Mbps devices to the hub.
- Use Category 3, 4, or 5 unshielded twisted-pair (CAT 3, 4, or 5 UTP) cable when connecting 10Mbps devices to the hub.
- Limit the cable length between devices to 100 meters.
- Use a straight-through cable to connect the hub to a server or workstation. For more information on cabling, see pages 12 and 13.
- To connect to a hub or switch use crossover cables, or port 1 set to MDI.

Daisy-chaining Hubs

The MDI/MDI-X button allows the Express 330T hub to connect to other hubs and switches using straight-through cables (instead of crossover cables). All ports on the hub are MDI-X, and the button is used to toggle port 1 to MDI. When using this feature, follow these guidelines:

- Only two hubs (Class II) can be daisy-chained together.
- The maximum cable length connecting the hubs can't exceed 5 meters.
- Never daisy-chain an Express 330T hub to a 100Base-T Class I hub (such as the Intel® Express 220T or 210T Stackable Hubs).



- Use a straight-through cable to connect from port 1 on a hub to any port on the other hub.

Stacking Hubs

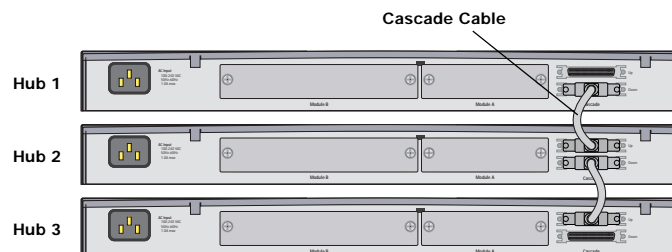
The Express 330T hub uses a unique set of connectors on the back of the hubs so they can be stacked together. By stacking hubs you can:

- Increase the number of available ports, yet still treat the stack as a single repeater.
- Use a single Management Module to manage all hubs in the stack.
- Use the hub's internal bridge so 10Mbps and 100Mbps segments can communicate.

Guidelines

- You must use the included cascade cable to stack the hubs.
- A stack can consist of any combination of Express 330T hubs (16- or 24-port versions).
- You can stack up to five Express 330T hubs.
- When cabled correctly, the top hub in a stack is numbered hub 1.
- If there is more than one hub in a stack, only one bridge is active at a time. The lowest numbered hub (top of the stack) is the active bridge.
- All devices at the same speed are in the same segment (collision domain). For example, all devices at 10Mbps are in one segment and all devices at 100Mbps are in another.

Connect the cascade cables to the hubs as shown in the diagram.



Optional Modules (TX & FX)

Module Functions

The Ethernet and Fiber Modules act as a switched port when plugged into an Express 330T Hub. The modules enable the hubs to:

- Connect to another device at full duplex (such as a server or switch).
- Expand network diameter (TX: 100m, FX: 160m-2km).
- Bridge 10Mbps and 100Mbps segments.
- Create separate collision domains.

The Modules are installed in the Module A slot on the back of the hub. You can install a module for each hub in a stack. The Express 330T will not accept modules from the Express 200 series hubs.

Module A LEDs

The LEDs are located on the front of the hub over ports 9-16. These LEDs provide information about the Fiber or Ethernet module such as the module's status, port activity, speed, and duplex mode.



| LED | Status | Meaning |
|---------------------|----------------|-------------------------------------|
| Status | On (green) | Module is present and functioning. |
| | Off | No module present. |
| LinkActivity | Solid green | Device linked. |
| | Blinking green | Receiving activity on that port. |
| | Off | No link detected. |
| Duplex | On (green) | Module is connected at full duplex. |
| | Off | Module is connected at half duplex. |
| Speed | On (orange) | Device connected at 10Mbps. |
| | Off | Device connected at 100Mbps. |

Configuring Modules

Normally you will not have to make any changes to the optional modules because they are designed to automatically configure themselves for the attached device. The controls located on the modules will allow you to make limited changes to solve connectivity issues. For complete control over the Fiber and Ethernet Modules you will need to purchase the optional Management Module.

Ethernet Module

The crossover button on the Ethernet Module switches the module's Ethernet port from MDI-X to MDI. This allows connections to different devices without the need for a crossover cable. Follow these guidelines:

- Use the MDI setting to connect the module to a hub or switch.
- Use the MDI-X setting to connect the module to a PC.

Fiber Module

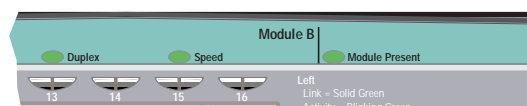
The Fiber Module has two duplex settings: full duplex and half duplex. Use the Change Duplex button to set the module to half duplex when connecting to a device that can't operate at full duplex.

The Fiber Module allows connections over longer distances than is possible with UTP cable. When connecting fiber, follow these guidelines:

- Use 62.5/125 μ multimode fiber optic cable with an SC-type connector.
- In half-duplex mode, the maximum distance between devices is 160m.
- In full-duplex mode, the maximum distance between devices is 2km.

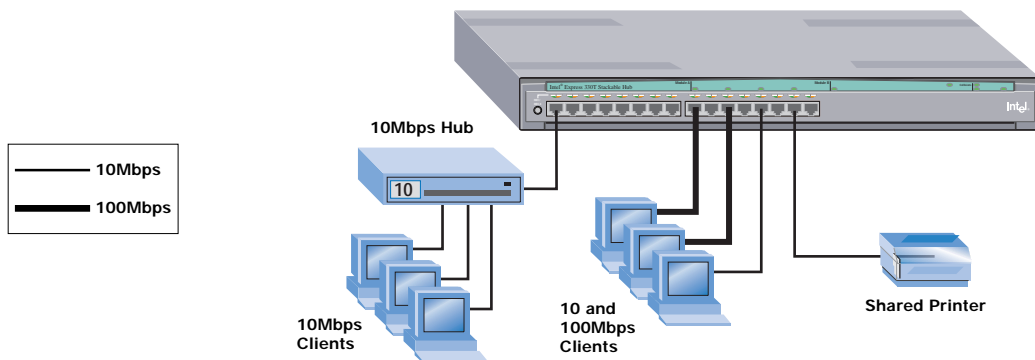
Module B LEDs

The Module B LED is located to the right of the Module A LEDs. This LED indicates if a Management Module is installed in the hub and the status of the module. For more information about the Management Module, refer to the Management Module Users Guide.



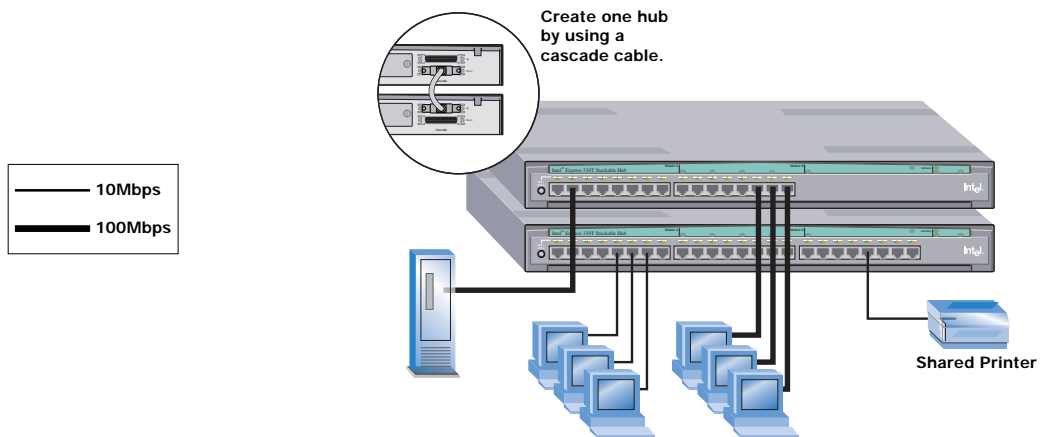
Growing Your Network

Mixed 10Mbps and 100Mbps



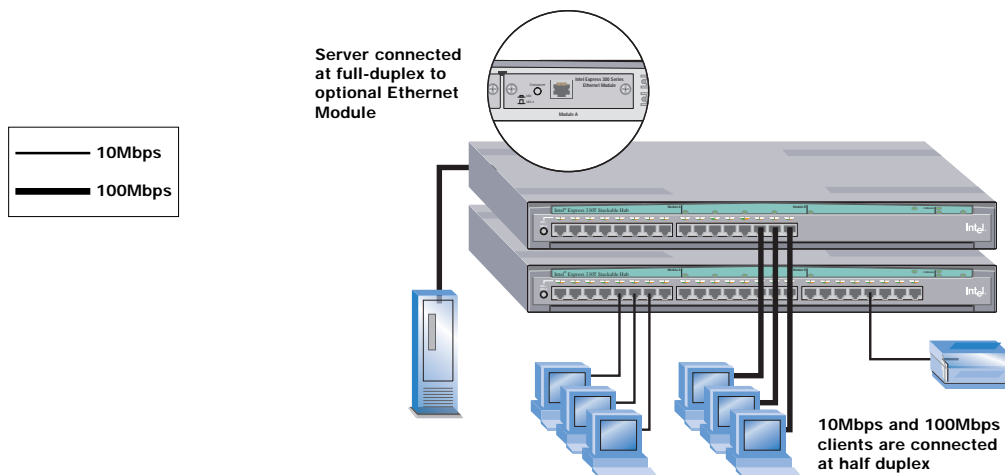
In a mixed environment of 10Mbps and 100Mbps devices, the Express 330T hub can provide the 100Mbps bandwidth to the clients (servers and power users) that require it. Simultaneously, the hub can provide connections for older 10Mbps devices.

Expanding the Network



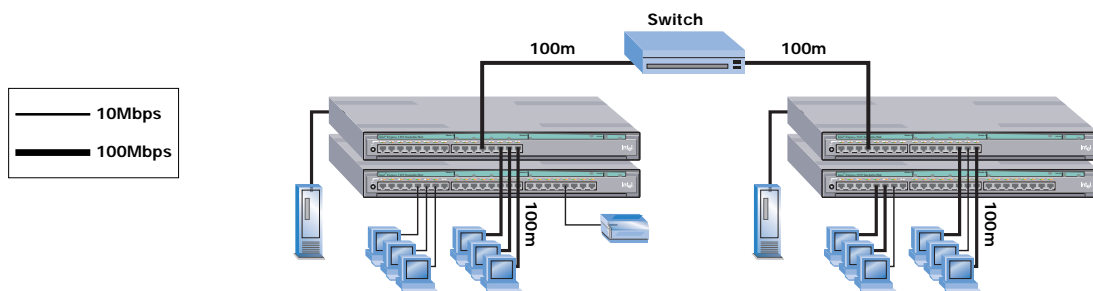
As the number of clients increase, you can add another hub to increase port density. Using a cascade cable, you can connect the 16-port hub with a 24-port hub to create a hub stack. This hub stack now acts as a single hub with 40 ports. You can stack up to five hubs totalling 120 ports (five 24-port hubs).

Connecting Devices at Full Duplex



By using the optional Ethernet Module, you can connect high traffic devices (such as servers) to the hub stack at full duplex. This can improve network performance.

Extending the Network



You can extend the 100Mbps network topology only by connecting hubs to a switch, bridge, or optional Ethernet or Fiber Modules. You can't extend the topology by daisy-chaining hubs together. In the example above, the network diameter is extended to 400 meters by connecting two hub stacks to a switch. Each stack is a separate collision domain (segment). You can also use the optional Fiber Module to extend the network up to 2km between hub stacks.

Cabling Devices

Media Requirements

Incorrect cabling is often the cause of network configuration problems. Read the next two pages if you're unsure of your requirements.

100Base-TX

The 100Base-TX Fast Ethernet specification requires that you use CAT 5 UTP cabling to operate at 100Mbps. If you use lower grade cabling (CAT 3 or CAT 4), you may get a connection, but will soon experience data loss or slow performance. You're limited to 100 meters between any two devices.

10Base-T

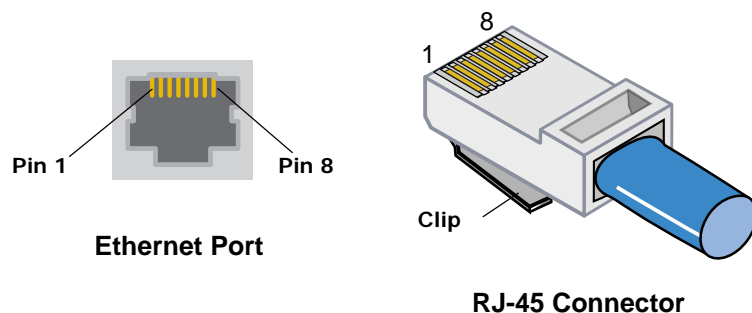
The 10Base-T Ethernet specification allows you to use CAT 3, CAT 4, or CAT 5 UTP cabling. You're limited to 100 meters between any two devices.

100Base-FX

The optional Fiber Module lets you connect to a switch, bridge, or router up to 160 meters away at half-duplex or up to 2 km at full-duplex. Use 62.5/125 μ multimode fiber optic cable with an SC-type fiber optic connector.

Straight-through vs. Crossover Cables

Hub ports are wired MDI-X, so use a straight-through cable when connecting to a workstation or server (network adapter cards are wired MDI). For direct connection to another MDI-X port, use the daisy-chain port or a crossover cable. Here are the pin arrangements for the hub's Ethernet port and the typical RJ-45 connector.



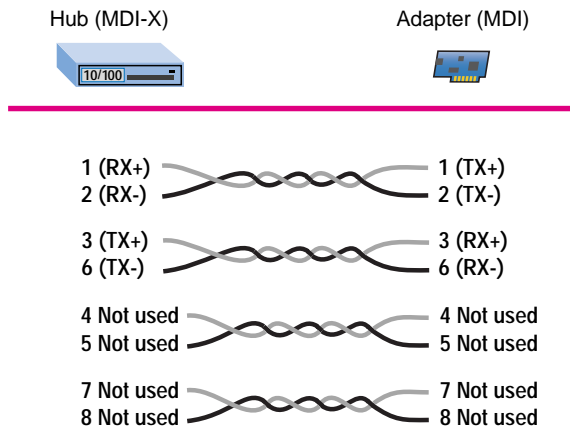
Testing a cable

A quick way to check a cable's link integrity is to plug one end into port 1 and the other end into port 2. Make sure the MDI/MDI-X button is out. Check the Activity LEDs for ports 1 and 2. If the LEDs are on, you have a functioning **crossover cable**.

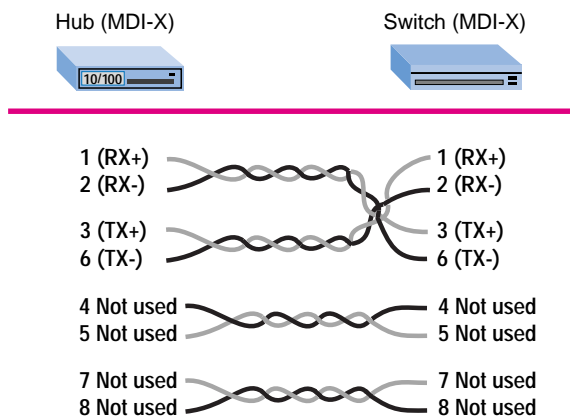
If the LEDs are off, push the MDI/MDI-X button in. If the Activity LEDs for ports 1 and 2 turn on, you have a functioning **straight-through cable**. However, if the LEDs remain off, you probably have a bad cable.

If a cable passes these tests, but the network connection is slow, verify that wires 1, 2 and 3, 6 on the cable are twisted pairs as shown in the diagrams.

Straight-through UTP cable



Crossover UTP cable



Frequently Asked Questions

Can I stack Intel Express 330T Stackable Hubs with Intel® Express 220T or 210T Stackable Hubs or Intel® Express 10/100 Stackable Hubs?

No. The hubs use a different cascade cable and connectors. However, both are 100Base-TX compliant and can exist in the same network.

Can I daisy-chain a 100Mbps hub to the 330T hub with UTP cabling?

Yes. The Express 330T is a Class II device, so you can daisy-chain two hubs operating at 100Mbps a maximum of 5m. See diagram on page 7.

How do I get devices running at 10Mbps to talk to devices running at 100Mbps?

The Express 330T hub's internal bridge allows 10Mbps and 100Mbps segments to communicate with each other automatically.

Can I set the speed on individual ports?

On the Express 330T hub, all ports are autosensing and operate at either 10Mbps or 100Mbps, depending on the speed of the attached device. To force port speed on the hub, you must purchase the optional Management Module (EE300MM).

Can I configure a full-duplex link from the Express 330T hub to another device?

Not directly, because the ports on the hub are capable of only half duplex. However, you can configure a full-duplex link through the optional Ethernet Module or Fiber Module. The external ports on these modules are switched ports and are capable of full duplex.

Troubleshooting

I've connected the cable but the left port LED (link) is off. Why?

- Try removing the cable and plugging it in again. Wait up to six seconds for a link.
- Make sure you're using the right type of cable (straight-through or crossover) for the device you want to connect to. If you're using the wrong cable, the link LED will not come on.
- Make sure the device you've connected to a port is a 10Base-T or 100Base-TX device. The Express 330T Stackable Hubs don't support 100Base-T4 devices running at 100Mbps. However, they do support T4 devices running at 10Mbps.
- Check the speed and duplex settings on the PC's network adapter.
- The cable is defective.

The left LED is now blinking orange instead of green. Why?

The port is partitioned (auto-disabled). This condition is usually caused by a malfunctioning network adapter or an overloaded network segment. For more information, see page 4.

I keep getting an intermittent loss of link. Why?

- You may be using the wrong grade of cable. The wrong cable can cause erratic performance and you may eventually lose the connection between the port and the attached device.
- Make sure the device connected to the hub port is configured for half-duplex operation. Hubs operate at half-duplex only.
- A cable segment somewhere in your collision domain may be too long. Make sure none of your UTP cabling is longer than 100 meters.
- Make sure your stack contains no more than five hubs.
- Check the Ethernet cable pairs. The TX pairs (pins 1 and 2) and the RX pairs (pins 3 and 4) should be twisted pairs. See diagram in page 13.

Regulatory Information and Warnings

Federal Communications Commission (FCC) Statement

This equipment has been tested and found to comply with the limits for a Class A digital device, pursuant to Part 15 of the FCC Rules. These limits are designed to provide reasonable protection against harmful interference when the equipment is operated in a commercial environment. This equipment generates, uses, and can radiate radio frequency energy and, if not installed and used in accordance with the instruction manual, may cause harmful interference to radio communications. Operation of this equipment in a residential area is likely to cause harmful interference in which case the user will be required to correct the interference at his own expense.

The user is cautioned that changes and modifications made to the equipment without approval of the manufacturer could void the user's authority to operate this equipment.

Manufacturer Declaration

This certifies that the Intel® Express 330T Stackable Hub, Intel® Express 300 Series Ethernet Module, and the Intel® Express 300 series Fiber Module complies with the EU Directive 89/336/EEC, using the EMC standards EN55022 (Class A) and EN50082-1. This product also meets or exceeds EN 60950 (safety) requirements. These products have been tested and verified to meet CISPR 22 Class A requirements.

Taiwan Class A EMI Statement

警告使用者：
這是甲類的資訊產品，在居住的環境中使用時，可能會造成射頻干擾，在這種情況下，使用者會被要求採取某些適當的對策。

VCCI Statement

Class A ITE

この装置は、クラス A 情報技術装置です。この装置を家庭環境で使用すると電波障害を引き起こすことがあります。この場合には使用者が適切な対策を講ずるようにより要求されることがあります。 VCCI-A

This is a Class A product based on the standard of the Voluntary Control Council for Interference by Information Technology Equipment (VCCI). If this equipment is used in a domestic environment, radio disturbance may arise. When such trouble occurs, the user may be required to take corrective actions.

WARNING

This is a Class A product. In a domestic environment this product may cause radio interference in which case the user may be required to take adequate measures.

Internal access to Intel Express Stackable Hubs is intended only for qualified service personnel. Do not remove any covers except Expansion Slot covers when optional modules are being installed.

WARNING

The system is designed to operate in a typical office environment. Choose a site that is:

- Clean and free of airborne particles (other than normal room dust).
- Well ventilated and away from sources of heat including direct sunlight.
- Away from sources of vibration or physical shock.
- Isolated from strong electromagnetic fields produced by electrical devices.
- In regions that are susceptible to electrical storms, we recommend you plug your system into a surge suppressor and disconnect telecommunication lines to your modem during an electrical storm.
- Provided with a properly grounded wall outlet.

Do not attempt to modify or use the supplied AC power cord if it is not the exact type required.

Ensure that the system is disconnected from its power source and from all telecommunications links, networks, or modems lines whenever the chassis cover is to be removed. Do not operate the system with the cover removed.

AVERTISSEMENT

Le système a été conçu pour fonctionner dans un cadre de travail normal. L'emplacement choisi doit être:

- Propre et dépourvu de poussière en suspension (sauf la poussière normale).
- Bien aéré et loin des sources de chaleur, y compris du soleil direct.
- A l'abri des chocs et des sources de vibrations.
- Isolé de forts champs magnétiques générés par des appareils électriques.
- Dans les régions sujettes aux orages magnétiques il est recommandé de brancher votre système à un supresseur de surtension, et de débrancher toutes les lignes de télécommunications de votre modem durant un orage.
- Muni d'une prise murale correctement mise à la terre.

Ne pas utiliser ni modifier le câble d'alimentation C. A. fourni, s'il ne correspond pas exactement au type requis.

Assurez vous que le système soit débranché de son alimentation ainsi que de toutes les liaisons de télécommunication, des réseaux, et des lignes de modem avant d'enlever le capot. Ne pas utiliser le système quand le capot est enlevé.

WARNUNG

Das System wurde für den Betrieb in einer normalen Büroumgebung entwickelt. Der Standort sollte:

- sauber und staubfrei sein (Hausstaub ausgenommen);
- gut gelüftet und keinen Heizquellen ausgesetzt sein (einschließlich direkter Sonneneinstrahlung);
- keinen Erschütterungen ausgesetzt sein;
- keine starken, von elektrischen Geräten erzeugten elektromagnetischen Felder aufweisen;
- in Regionen, in denen elektrische Stürme auftreten, mit einem Überspannungsschutzgerät verbunden sein; während eines elektrischen Sturms sollte keine Verbindung der Telekommunikationsleitungen mit dem Modem bestehen;
- mit einer geerdeten Wechselstromsteckdose ausgerüstet sein.

Versuchen Sie nicht, das mitgelieferte Netzkabel zu ändern oder zu verwenden, wenn es sich nicht um genau den erforderlichen Typ handelt.

Das System darf weder an eine Stromquelle angeschlossen sein noch eine Verbindung mit einer Telekommunikationseinrichtung, einem Netzwerk oder einer Modem-Leitung haben, wenn die Gehäuseabdeckung entfernt wird. Nehmen Sie das System nicht ohne die Abdeckung in Betrieb.

AVVERTENZA

Il sistema è progettato per funzionare in un ambiente di lavoro tipico. Scegliere una postazione che sia:

- Pulita e libera da particelle in sospensione (a parte la normale polvere presente nell'ambiente).
- Ben ventilata e lontana da fonti di calore, compresa la luce solare diretta.
- Al riparo da urti e lontana da fonti di vibrazione.
- Isolata dai forti campi magnetici prodotti da dispositivi elettrici.
- In aree soggette a temporali, è consigliabile collegare il sistema ad un limitatore di corrente. In caso di temporali, scollegare le linee di comunicazione dal modem.
- Dotata di una presa a muro correttamente installata.

Non modificare o utilizzare il cavo di alimentazione in c. a. fornito dal produttore, se non corrisponde esattamente al tipo richiesto.

Prima di rimuovere il coperchio del telaio, assicurarsi che il sistema sia scollegato dall'alimentazione, da tutti i collegamenti di comunicazione, reti o linee di modem. Non avviare il sistema senza aver prima messo a posto il coperchio.

ADVERTENCIAS

El sistema está diseñado para funcionar en un entorno de trabajo normal. Escoja un lugar:

- Limpio y libre de partículas en suspensión (salvo el polvo normal)
- Bien ventilado y alejado de fuentes de calor, incluida la luz solar directa.
- Alejado de fuentes de vibración.
- Aislado de campos electromagnéticos fuertes producidos por dispositivos eléctricos.
- En regiones con frecuentes tormentas eléctricas, se recomienda conectar su sistema a un eliminador de sobrevoltage y desconectar el módem de las líneas de telecomunicación durante las tormentas.
- Previsto de una toma de tierra correctamente instalada.

No intente modificar ni usar el cable de alimentación de corriente alterna, si no se corresponde exactamente con el tipo requerido.

Asegúrese de que cada vez que se quite la cubierta del chasis, el sistema haya sido desconectado de la red de alimentación y de todos los enlaces de telecomunicaciones, de red y de líneas de módem. No ponga en funcionamiento el sistema mientras la cubierta esté quitada

Wichtige Sicherheitshinweise

1. Bitte lesen Sie sich diese Hinweise sorgfältig durch.
2. Heben Sie diese Anleitung für den spätem Gebrauch auf.
3. Vor jedem Reinigen ist das Gerät vom Stromnetz zu trennen. Verwenden Sie keine Flüssig- oder Aerosolreiniger. Am besten dient ein angefeuchtetes Tuch zur Reinigung.
4. Um eine Beschädigung des Gerätes zu vermeiden sollten Sie nur Zubehörteile verwenden, die vom Hersteller zugelassen sind.
5. Das Gerät ist vor Feuchtigkeit zu schützen.
6. Bei der Aufstellung des Gerätes ist auf sichern Stand zu achten. Ein Kippen oder Fallen könnte Verletzungen hervorrufen. Verwenden Sie nur sichere Standorte und beachten Sie die Aufstellhinweise des Herstellers.
7. Die Belüftungsöffnungen dienen zur Luftzirkulation die das Gerät vor Überhitzung schützt. Sorgen Sie dafür, daß diese Öffnungen nicht abgedeckt werden.
8. Beachten Sie beim Anschluß an das Stromnetz die Anschlußwerte.
9. Die Netzanschlußsteckdose muß aus Gründen der elektrischen Sicherheit einen Schutzleiterkontakt haben.
10. Verlegen Sie die Netzanschlußleitung so, daß niemand darüber fallen kann. Es sollte auch nichts auf der Leitung abgestellt werden.
11. Alle Hinweise und Warnungen die sich am Geräten befinden sind zu beachten.
12. Wird das Gerät über einen längeren Zeitraum nicht benutzt, sollten Sie es vom Stromnetz trennen. Somit wird im Falle einer Überspannung eine Beschädigung vermieden.
13. Durch die Lüftungsöffnungen dürfen niemals Gegenstände oder Flüssigkeiten in das Gerät gelangen. Dies könnte einen Brand bzw. Elektrischen Schlag auslösen.
14. Öffnen Sie niemals das Gerät. Das Gerät darf aus Gründen der elektrischen Sicherheit nur von autorisiertem Servicepersonal geöffnet werden.
15. Wenn folgende Situationen auftreten ist das Gerät vom Stromnetz zu trennen und von einer qualifizierten Servicestelle zu überprüfen:
 - a— Netzkabel oder Netzstecker sind beschädigt.
 - b— Flüssigkeit ist in das Gerät eingedrungen.
 - c— Das Gerät war Feuchtigkeit ausgesetzt.
 - d— Wenn das Gerät nicht der Bedienungsanleitung entsprechend funktioniert oder Sie mit Hilfe dieser Anleitung keine Verbesserung erzielen.
 - e— Das Gerät ist gefallen und/oder das Gehäuse ist beschädigt.
 - f— Wenn das Gerät deutliche Anzeichen eines Defektes aufweist.
16. Bei Reparaturen dürfen nur Originalersatzteile bzw. den Originalteilen entsprechende Teile verwendet werden. Der Einsatz von ungeeigneten Ersatzteilen kann eine weitere Beschädigung hervorrufen.
17. Wenden Sie sich mit allen Fragen die Service und Reparatur betreffen an Ihren Servicepartner. Somit stellen Sie die Betriebssicherheit des Gerätes sicher.
18. Zum Netzanschluß dieses Gerätes ist eine geprüfte Leitung zu verwenden, Für einen Nennstrom bis 6A und einem Gerätegewicht größer 3kg ist eine Leitung nicht leichter als H05VV-F, 3G, 0.75mm² einzusetzen.

Limited Hardware Warranty

Limited Hardware Warranty

Intel warrants to the original owner that the hardware product delivered in this package will be free from defects in material and workmanship for three (3) years following the latter of: (i) the date of purchase only if you register by returning the registration card as indicated thereon with proof of purchase; or (ii) the date of manufacture; or (iii) the registration date if by electronic means provided such registration occurs within thirty (30) days from purchase. This warranty does not cover the product if it is damaged in the process of being installed. Intel recommends that you have the company from whom you purchased this product install the product.

INTEL RESERVES THE RIGHT TO FILL YOUR ORDER WITH A PRODUCT CONTAINING NEW OR REMANUFACTURED COMPONENTS. THE ABOVE WARRANTY IS IN LIEU OF ANY OTHER WARRANTY, WHETHER EXPRESS, IMPLIED OR STATUTORY, INCLUDING, BUT NOT LIMITED TO, ANY WARRANTY OF NONINFRINGEMENT OF INTELLECTUAL PROPERTY, MERCHANTABILITY, FITNESS FOR A PARTICULAR PURPOSE, OR ANY WARRANTY ARISING OUT OF ANY PROPOSAL, SPECIFICATION, SAMPLE OR OTHERWISE.

This warranty does not cover replacement of products damaged by abuse, accident, misuse, neglect, alteration, repair, disaster, improper installation or improper testing. If the product is found to be otherwise defective, Intel, at its option, will replace or repair the product at no charge except as set forth below, provided that you deliver the product along with a return material authorization (RMA) number either to the company from whom you purchased it or to Intel (North America only). If you ship the product, you must assume the risk of damage or loss in transit. You must use the original container (or the equivalent) and pay the shipping charge. Intel may replace or repair the product with either new or remanufactured product or parts, and the returned product becomes Intel's property. Intel warrants the repaired or replaced product to be free from defects in material and workmanship for a period of the greater of: (i) ninety (90) days from the return shipping date; or (ii) the period of time remaining on the original three (3) year warranty.

This warranty gives you specific legal rights and you may have other rights which vary from state to state. All parts or components contained in this product are covered by Intel's limited warranty for this product; the product may contain fully tested, recycled parts, warranted as if new. For warranty information call one of the numbers below.

Returning a Defective Product (RMA)

Before returning any product, contact an Intel Customer Support Group and obtain an RMA number by calling:

North America only: (916) 377-7000
Other locations: Return the product to the place of purchase.

If the Customer Support Group verifies that the product is defective, they will have the Return Material Authorization Department issue you an RMA number to place on the outer package of the product. Intel cannot accept any product without an RMA number on the package.

LIMITATION OF LIABILITY AND REMEDIES

INTEL SHALL HAVE NO LIABILITY FOR ANY INDIRECT OR SPECULATIVE DAMAGES (INCLUDING, WITHOUT LIMITING THE FOREGOING, CONSEQUENTIAL, INCIDENTAL AND SPECIAL DAMAGES) ARISING FROM THE USE OF OR INABILITY TO USE THIS PRODUCT, WHETHER ARISING OUT OF CONTRACT, NEGLIGENCE, TORT, OR UNDER ANY WARRANTY, IRRESPECTIVE OF WHETHER INTEL HAS ADVANCE NOTICE OF THE POSSIBILITY OF ANY SUCH DAMAGES, INCLUDING, BUT NOT LIMITED TO LOSS OF USE, INFRINGEMENT OF INTELLECTUAL PROPERTY, BUSINESS INTERRUPTIONS, AND LOSS OF PROFITS, NOTWITHSTANDING THE FOREGOING. INTEL'S TOTAL LIABILITY FOR ALL CLAIMS UNDER THIS AGREEMENT SHALL NOT EXCEED THE PRICE PAID FOR THE PRODUCT. THESE LIMITATIONS ON POTENTIAL LIABILITIES WERE AN ESSENTIAL ELEMENT IN SETTING THE PRODUCT PRICE. INTEL NEITHER ASSUMES NOR AUTHORIZES ANYONE TO ASSUME FOR IT ANY OTHER LIABILITIES.

Some states do not allow the exclusion or limitation of incidental or consequential damages, so the above limitations or exclusions may not apply to you.

Critical Control Applications: Intel specifically disclaims liability for use of the hardware product in critical control applications (including, for example only, safety or health care control systems, nuclear energy control systems, or air or ground traffic control systems) by Licensee or Sublicensees, and such use is entirely at the user's risk. Licensee agrees to defend, indemnify, and hold Intel harmless from and against any and all claims arising out of use of the hardware product in such applications by Licensee or Sublicensees.

Software: Software provided with the hardware product is not covered under the hardware warranty described above. See the applicable software license agreement which shipped with the hardware product for details on any software warranty.

Limited Hardware Warranty (Europe only)

Intel warrants to the original owner that the hardware product delivered in this package will be free from defects in material and workmanship for three (3) years following the latter of: (i) the date of purchase only if you register by returning the registration card as indicated thereon with proof of purchase; or (ii) the date of manufacture; or (iii) the registration date if by electronic means provided such registration occurs within thirty (30) days from purchase. This warranty does not cover the product if it is damaged in the process of being installed. Intel recommends that you have the company from whom you purchased this product install the product.

INTEL RESERVES THE RIGHT TO FILL YOUR ORDER WITH A PRODUCT CONTAINING NEW OR REMANUFACTURED COMPONENTS. THE ABOVE WARRANTY IS IN LIEU OF ANY OTHER WARRANTY, WHETHER EXPRESS, IMPLIED OR STATUTORY, INCLUDING, BUT NOT LIMITED TO, ANY WARRANTY OF NONINFRINGEMENT OF INTELLECTUAL PROPERTY, SATISFACTORY QUALITY, FITNESS FOR A PARTICULAR PURPOSE, OR ANY WARRANTY ARISING OUT OF ANY PROPOSAL, SPECIFICATION, SAMPLE OR OTHERWISE.

This warranty does not cover replacement of products damaged by abuse, accident, misuse, neglect, alteration, repair, disaster, improper installation or improper testing. If the product is found to be otherwise defective, Intel, at its option, will replace or repair the product at no charge except as set forth below, provided that you deliver the product along with a return material authorization (RMA) number either to (a) the company from whom you purchased it or (b) to Intel, North America only (if purchased in Europe you must deliver the product to “(a)”). If you ship the product, you must assume the risk of damage or loss in transit. You must use the original container (or the equivalent) and pay the shipping charge. Intel may replace or repair the product with either new or remanufactured product or parts, and the returned product becomes Intel’s property. Intel warrants the repaired or replaced product to be free from defects in material and workmanship for a period of the greater of: (i) ninety (90) days from the return shipping date; or (ii) the period of time remaining on the original three (3) year warranty.

This warranty gives you specific legal rights and you may have other rights which vary from state to state. All parts or components contained in this product are covered by Intel’s limited warranty for this product; the product may contain fully tested, recycled parts, warranted as if new. For warranty information call one of the numbers below.

Returning a Defective Product (RMA)

Before returning any product, contact an Intel Customer Support Group and obtain an RMA number by calling the non-toll free numbers below:

| Country | Number | Language |
|---------|-----------------------|----------|
| France | +33 (0) 1 41 91 85 29 | French |
| Germany | +49 (0) 69 9509 6099 | German |
| Italy | +39 (0) 2 696 33276 | Italian |
| UK | +44 (0) 870 607 2439 | English |

If the Customer Support Group verifies that the product is defective, they will have the Return Material Authorization Department issue you an RMA number to place on the outer package of the product. Intel cannot accept any product without an RMA number on the package.

LIMITATION OF LIABILITY AND REMEDIES

INTEL SHALL HAVE NO LIABILITY FOR ANY INDIRECT OR SPECULATIVE DAMAGES (INCLUDING, WITHOUT LIMITING THE FOREGOING, CONSEQUENTIAL, INCIDENTAL AND SPECIAL DAMAGES) ARISING FROM THE USE OF OR INABILITY TO USE THIS PRODUCT, WHETHER ARISING OUT OF CONTRACT, NEGLIGENCE, TORT, OR UNDER ANY WARRANTY, IRRESPECTIVE OF WHETHER INTEL HAS ADVANCE NOTICE OF THE POSSIBILITY OF ANY SUCH DAMAGES, INCLUDING, BUT NOT LIMITED TO LOSS OF USE, INFRINGEMENT OF INTELLECTUAL PROPERTY, BUSINESS INTERRUPTIONS, AND LOSS OF PROFITS, NOTWITHSTANDING THE FOREGOING, INTEL’S TOTAL LIABILITY FOR ALL CLAIMS UNDER THIS AGREEMENT SHALL NOT EXCEED THE PRICE PAID FOR THE PRODUCT. THESE LIMITATIONS ON POTENTIAL LIABILITIES WERE AN ESSENTIAL ELEMENT IN SETTING THE PRODUCT PRICE. INTEL NEITHER ASSUMES NOR AUTHORIZES ANYONE TO ASSUME FOR IT ANY OTHER LIABILITIES.

Critical Control Applications: Intel specifically disclaims liability for use of the hardware product in critical control applications (including, for example only, safety or health care control systems, nuclear energy control systems, or air or ground traffic control systems) by Licensee or Sublicensees, and such use is entirely at the user’s risk. Licensee agrees to defend, indemnify, and hold Intel harmless from and against any and all claims arising out of use of the hardware product in such applications by Licensee or Sublicensees.

Software: Software provided with the hardware product is not covered under the hardware warranty described above. See the applicable software license agreement which shipped with the hardware product for details on any software warranty.

This limited hardware warranty shall be governed by and construed in accordance with the laws of England and Wales. The courts of England shall have exclusive jurisdiction regarding any claim brought under this warranty.

Limitation de garantie du matériel (Europe)

Intel garantit au propriétaire original que le produit matériel livré dans le présent coffret est exempt de défaut matériel ou de fabrication pour une période de trois (3) ans à compter de la plus récente des dates suivantes : (i) la date d'achat uniquement si vous vous êtes inscrit en renvoyant la carte d'inscription de la façon indiquée, avec une preuve d'achat ; (ii) la date de fabrication ou (iii) la date d'inscription électronique à condition qu'elle ait lieu dans les 30 jours suivant l'achat. La présente garantie sera nulle si le produit matériel est endommagé lors de son installation. Intel recommande de faire installer le produit matériel par la société auprès de laquelle il a été acheté.

INTEL SE RESERVE LE DROIT DE VOUS LIVRER UN PRODUIT CONTENANT DES COMPOSANTS NOUVEAUX OU REPARÉS. CETTE GARANTIE REMPLACE TOUTES LES AUTRES GARANTIES, EXPRESSES, TACITES OU LEGALES, Y COMPRIS, MAIS SANS QUE CETTE ENUMERATION SOIT LIMITATIVE, LES GARANTIES CONCERNANT LE NON RESPECT DE LA PROPRIÉTÉ INTELLECTUELLE, LA QUALITÉ SATISFAISANTE, L'ADEQUATION POUR UN USAGE PARTICULIER, OU TOUTE AUTRE GARANTIE ISSUE DE TOUT AUTRE PROPOSITION, SPECIFICATION, ECHANTILLON OU AUTRE.

La présente garantie ne couvre pas le remplacement de produits matériels endommagés par abus, accident, mauvaise utilisation, négligence, altération, réparation, catastrophe, installation ou tests incorrects. Si le produit matériel s'avère défectueux pour une autre raison, Intel décidera de le remplacer ou de le réparer gratuitement, à l'exception des cas énumérés ci-après, à condition que le produit soit renvoyé avec un numéro d'autorisation de retour du matériel (ARM) à (a) la société auprès de laquelle il a été acheté ou (b) à Intel, en Amérique du Nord seulement (si l'achat a eu lieu en Europe vous devez le renvoyer à "a"). Si vous expédiez le produit matériel, vous devez assumer le risque de dégâts ou de perte pendant le transport. Vous devez utiliser le coffret original (ou l'équivalent) et payer les frais de transport. Intel peut réparer le produit matériel ou le remplacer par un produit neuf ou remis à neuf, le produit renvoyé devenant la propriété d'Intel. Intel garantit que le produit matériel réparé ou de remplacement est exempt de défaut matériel ou de fabrication pendant la plus longue des périodes suivantes: (i) quatre-vingt-dix (90) jours à compter de la date de retour; ou (ii) la période encore couverte par la garantie originale de trois (3) ans.

La présente garantie vous accorde des droits juridiques spécifiques et vous pouvez également disposer d'autres droits variant d'un Etat à l'autre. Tous les composants ou pièces du produit matériel sont couverts par la garantie limitée d'Intel relative à ce dernier ; il peut contenir des pièces recyclées, entièrement testées et garanties comme neuves. Pour plus d'informations sur la garantie, appelez l'un des numéros énumérés ci-après.

Retour d'un produit défectueux (ARM)

Avant de retourner un produit matériel, contactez le service d'assistance à la clientèle Intel pour obtenir un numéro ARM.

| Pays | Numéro | Langue |
|-----------|-----------------------|----------|
| France | +33 (0) 1 41 91 85 29 | Français |
| Allemagne | +49 (0) 69 9509 6099 | Allemand |
| Italie | +39 (0) 2 696 33276 | Italien |
| R.U. | +44 (0) 870 607 2439 | Anglais |

Si le service d'assistance confirme que le produit est défectueux, il demandera au Département d'autorisation de retour de matériel de vous attribuer un numéro ARM à indiquer sur l'emballage externe. Intel ne peut accepter aucun produit sans numéro ARM.

LIMITATION DE RESPONSABILITE ET DE RECOURS

INTEL DECLINE TOUTE RESPONSABILITE RELATIVE A DES DOMMAGES INDIRECTS OU SPECULATIFS (Y COMPRIS, SANS LIMITATION DES ELEMENTS CI-DESSUS, LES DOMMAGES CONSECUTIFS, ACCIDENTELS ET SPECIAUX) DECOULANT DE L'UTILISATION OU DE L'INCAPACITE D'UTILISER CE PRODUIT, DUS A UN CONTRAT, UNE NEGLIGENCE, UN TORT OU COUVERTS PAR TOUTE GARANTIE, MEME SI LA POSSIBILITE D'UN TEL DOMMAGE A DEJA ETE PORTEE A LA CONNAISSANCE D'INTEL, Y COMPRIS, MAIS SANS QUE CETTE ENUMERATION SOIT LIMITATIVE, UNE PRIVATION DE JOUISSANCE, UN NON RESPECT DE LA PROPRIÉTÉ INTELLECTUELLE, UNE INTERRUPTION DES ACTIVITES ET UN MANQUE A GAGNER. NONOBTANT LA DECLARATION QUI PRECEDE, LA RESPONSABILITE GLOBALE DE INTEL CONCERNANT TOUS LES LITIGES RELATIFS AU PRESENT ACCORD NE SERA PAS SUPERIEURE AU PRIX PAYE POUR LE PRODUIT. CES LIMITATIONS DE RESPONSABILITE POTENTIELLE ONT CONSTITUE UN FACTEUR DETERMINANT LORS DE LA FIXATION DU PRIX DU PRODUIT. INTEL N'ASSUME AUCUNE AUTRE RESPONSABILITE ET N'AUTORISE QUICONQUE A LE FAIRE EN SON NOM.

Applications de contrôle critique: Intel décline toute responsabilité en cas d'utilisation du produit matériel dans le cadre d'applications de contrôle critique (y compris et pour ne citer que des exemples, les systèmes de contrôle de sécurité ou de services médicaux, les systèmes de contrôle d'énergie nucléaire, ou de trafic terrestre ou aérien) par le licencié ou le sous-licencié, l'utilisateur encourt entièrement les risques d'une telle utilisation. Le titulaire de la licence accepte de défendre, d'indemniser et de garantir Intel de toute réclamation survenant par suite de l'utilisation du produit matériel dans de telles applications par le licencié ou le sous-licencié.

Logiciel: Le logiciel fourni avec le produit matériel n'est pas couvert par la garantie du matériel décrite ci-dessus. Consultez l'accord de licence du logiciel qui accompagne le produit matériel pour obtenir des détails sur la garantie du logiciel.

La garantie limitée du matériel est régie et interprétée par les lois en vigueur en Angleterre et au Pays de Galles. Les tribunaux anglais jouissent d'une juridiction exclusive en matière de litige concernant cette garantie.

Garanzia limitata sull'hardware (valida solo in Europa)

Intel garantisce al proprietario originale che il prodotto hardware incluso in questo pacchetto è privo di difetti in materiale e in lavorazione per un periodo di tre (3) anni a partire dall'ultima data tra: (i) la data di acquisto, solo nel caso in cui l'utente effettua la registrazione tramite la scheda di registrazione, come indicato, accompagnata dalla prova di acquisto; oppure (ii) la data di fabbricazione; oppure (iii) la data di registrazione, se effettuata per via elettronica, a condizione che tale registrazione avvenga entro trenta (30) giorni dall'acquisto. Questa garanzia non copre il prodotto nel caso questo fosse danneggiato durante l'installazione. Intel raccomanda di fare installare il prodotto dall'azienda da cui il prodotto è stato acquistato.

INTEL SI RISERVA IL DIRITTO DI ONORARE L'ORDINAZIONE CON UN PRODOTTO CONTENENTE PARTI NUOVE O RIFABBRICATO. LA GARANZIA QUI SOPRA SOSTITUISCE QUALSIASI ALTRA GARANZIA, SIA QUELLA ESPLICITA, IMPLICITA O STATUTORIA, INCLUSO, MA NON LIMITATO A, QUALSIASI GARANZIA DI NON VIOLAZIONE DI PROPRIETÀ INTELLETTUALE, QUALITÀ SODDISFACENTE, IDONEITÀ A QUALSIASI SCOPO PARTICOLARE O QUALSIASI GARANZIA DERIVANTE DA PROPOSTA, SPECIFICAZIONI, CAMPIONI O ALTRO.

Questa garanzia non include la sostituzione di prodotti danneggiati a causa di abuso, incidente, uso inappropriato, negligenza, alterazione, riparazione, disastro, installazione o controllo inadeguati. Se il prodotto viene considerato difettoso per altri motivi, Intel, a sua discrezione, sostituirà o riparerà il prodotto, a proprie spese, eccetto nei casi qui sotto menzionati, a condizione che il prodotto venga consegnato congiuntamente al numero di autorizzazione per la restituzione del materiale (RMA, Return Material Authorization) (a) all'azienda da cui si è acquistato il prodotto, oppure (b) a Intel, solo quando in Nord America (se il prodotto è stato acquistato in Europa, sarà necessario consegnare il prodotto seguendo le modalità indicate in "(a)"). Se il prodotto viene inviato, il mittente si assume la responsabilità in caso di danni o di perdita durante il tragitto. È necessario utilizzare l'imballaggio originale del prodotto (o un suo equivalente) e pagare le spese di spedizione. Intel sostituirà o riparerà il prodotto (o la parte) con uno nuovo o uno rifabbricato, e il prodotto restituito diventerà proprietà di Intel. Intel garantisce che il prodotto riparato o sostituito sarà privo di difetti in materiale e in lavorazione per un periodo comunque non superiore: (i) a novanta (90) giorni dalla data di spedizione all'utente; oppure (ii) al periodo rimanente nella garanzia originale di tre (3) anni.

Questa garanzia dà all'utente diritti legali specifici; potrebbero esistere altri diritti, variabili da stato a stato. Tutte le parti e i componenti contenuti in questo prodotto sono coperti dalla garanzia limitata di Intel relativa a questo prodotto; il prodotto potrebbe contenere parti riciclate, completamente collaudate e garantite come nuove. Per maggiori informazioni sulla garanzia, chiamare uno dei numeri indicati qui sotto.

Restituzione di prodotti difettosi (RMA)

Prima di restituire un prodotto, contattare l'assistenza tecnica di Intel e richiedere un numero RMA; i numeri verdi sono qui sotto elencati:

| Paese | Numero | Lingua |
|-------------|-----------------------|----------|
| Francia | +33 (0) 1 41 91 85 29 | Francese |
| Germania | +49 (0) 69 9509 6099 | Tedesco |
| Italia | +39 (0) 2 696 33276 | Italiano |
| Regno Unito | +44 (0) 870 607 2439 | Inglese |

Se il gruppo di supporto alla clientela determina che il prodotto è difettoso, richiederà l'emissione di un numero di autorizzazione per la restituzione del materiale (RMA) da porre all'esterno dell'imballaggio del prodotto. Intel non accetterà prodotti sprovvisti di tale numero visibile sull'imballaggio.

LIMITAZIONI DI RESPONSABILITÀ E RIMEDI

INTEL NON POTRÀ ESSERE CONSIDERATA RESPONSABILE DI ALCUN DANNO, DIRETTO O SPECULATIVO (INCLUSI, SENZA LIMITAZIONI COME INDICATO IN PRECEDENZA, I DANNI CONSEGUENZIALI, INCIDENTALI E SPECIALI) DERIVANTI DALL'USO O DALLA IMPOSSIBILITÀ DI UTILIZZARE QUESTO PRODOTTO, PER MOTIVI NON CONTEMPLATI NEL CONTRATTO, O DOVUTI A NEGLIGENZA, TORTO O SOTTO QUALSIASI GARANZIA, INDIPENDENTEMENTE DAL FATTO CHE INTEL SIA A CONOSCENZA O MENO DELLA POSSIBILITÀ DI TALI DANNI, INCLUSI, MA NON LIMITATI ALLA PERDITA D'USO, VIOLAZIONE DI PROPRIETÀ INTELLETTUALE, INTERRUZIONI D'AFFARI E PERDITA DI PROFITTI, NONOSTANTE QUANTO DETTO IN PRECEDENZA. LA RESPONSABILITÀ TOTALE DI INTEL NEI CONFRONTI DEI RECLAMI, SECONDO QUESTO ACCORDO, NON ECCEDE IL PREZZO PAGATO PER IL PRODOTTO. QUESTE LIMITAZIONI SULLE RESPONSABILITÀ POTENZIALI SONO STATE FATTORE DECISIVO NELLA DETERMINAZIONE DEL PREZZO DEL PRODOTTO. INTEL NON ASSUME, NÉ AUTORIZZA ALCUNO AD ASSUMERE PER SÉ, NESSUN'ALTRA RESPONSABILITÀ.

Applicazioni di controllo di situazioni critiche: Intel disconosce specificatamente la responsabilità nel caso di uso dell'hardware in applicazioni di controllo di situazioni critiche (inclusi, al solo scopo di esempio, sistemi di controllo della sicurezza o della salute, dell'energia nucleare, o sistemi di controllo aereo o terrestre) da parte dei licenziatari o dei sottolicenziatari, e tale uso fa parte completamente del rischio intrapreso dall'utente. Il licenziatario è d'accordo nel difendere, indennizzare e liberare Intel da ogni reclamo risultante dall'uso del prodotto hardware in tale applicazioni da parte del licenziatario o del sottolicenziatario.

Software: il software accluso al prodotto hardware non è coperto dalla garanzia dell'hardware sopra descritta. Per maggiori dettagli sulla garanzia del software, vedere l'accordo di licenza relativo al software, inviato assieme al prodotto hardware.

Questa garanzia limitata dell'hardware è governata da, ed è conforme a, le leggi di Inghilterra e Galles. Il tribunale di Inghilterra avrà la completa giurisdizione su qualsiasi reclamo presentato sotto questa garanzia.

Beschränkte Hardwaregarantie (Nur für Europa)

Intel garantiert dem ursprünglichen Eigentümer, daß die in diesem Paket enthaltene Hardware keine Material- oder Herstellungsfehler aufweist. Diese Garantie gilt für drei (3) Jahre (a) nach dem Kaufdatum, wenn die ausgefüllte Registrierungskarte entsprechend den darauf enthaltenen Angaben zusammen mit einem Kaufnachweis eingeschendet wurde; oder (b) nach dem Herstellungsdatum; oder (c) nach dem Registrierungsdatum, wenn die Registrierung innerhalb von 30 Tagen auf elektronischem Weg durchgeführt wird. Diese Garantie entfällt, wenn die Hardware bei der Installation beschädigt wird. Intel empfiehlt, die Installation durch den Verkäufer der Hardware durchführen zu lassen.

INTEL BEHÄLT SICH DAS RECHT VOR, IHREN AUFTRAG MIT EINEM PRODUKT ZU ERFÜLLEN, DAS NEUE ODER ERNEUERTE KOMPONENTEN ENTHÄLT. OBIGE GARANTIE GILT ANSTELLE ALLER ANDEREN AUSDRÜCKLICHEN, STILLSCHWEIGENDEN ODER GESETZLICH FESTGELEGTEN GARANTIEEN. AUSGESCHLOSSEN SIND DAMIT AUCH UNTER ANDEREM ALLE GARANTIEEN FÜR DIE VERKEHRSFÄHIGKEIT, DIE VERLETZUNG DER RECHTE VON DRITTEN, DIE EIGNUNG FÜR EINEN BESTIMMTEN ZWECK ODER GARANTIEEN, DIE IM ZUSAMMENHANG MIT EINEM ANGEBO, EINER SPEZIFIKATION ODER EINEM MUSTER GEGEBEN WURDEN.

Diese Garantie schließt den Hardware-Ersatz bei Beschädigung aufgrund von Mutwilligkeit, Unfall, falscher Verwendung, Fahrlässigkeit, Umänderung, Reparatur, Katastrophen, falscher Installation oder unvorschriftsmäßigem Testen aus. Wenn das Hardwareprodukt aus anderen Gründen beschädigt ist, liegt die Entscheidung bei Intel, ob die Hardware mit Ausnahme der im folgenden beschriebenen Einschränkungen kostenlos ersetzt oder repariert wird. Hierzu müssen Sie das Produkt zusammen mit einer Rückgabenummer (RMA-Nummer, siehe unten) entweder (a) an den Verkäufer des Produkts oder (b) an Intel zurücksenden (bei Kauf in Europa muß das Produkt an "(a)" geliefert werden). Das Risiko des Verlusts oder der Beschädigung während des Transports liegt bei Ihnen als Käufer. Sie müssen zum Versenden die Originalverpackung (oder einen gleichwertigen Ersatz) verwenden und die Versandkosten übernehmen. Intel ersetzt die Hardware entweder durch ein neues oder ein neuwertiges Produkt. Das zurückgegebene Hardwareprodukt wird Eigentum von Intel. Intel garantiert, daß das reparierte oder ersetzte Hardwareprodukt für einen Zeitraum von: (i) neunzig (90) Tagen ab Rückgabedatum oder (ii) für die verbleibende Zeit der ursprünglichen Garantie von drei (3) Jahren frei von Material- und Herstellungsfehlern ist. Dabei gilt jeweils der längere Zeitraum.

Mit dieser Garantie erhalten Sie bestimmte Rechte, die je nach Staat durch weitere Rechte ergänzt werden können. Alle Teile oder Komponenten dieses Hardwareprodukts werden durch die beschränkte Hardwaregarantie von Intel abgedeckt. Das Hardwareprodukt kann vollständig getestete, wiederverwendete Teile enthalten, die derselben Garantie wie neue Produkte unterliegen. Informationen zur Garantie erhalten Sie unter einer der Intel Kundendienstnummern, die am Ende dieses Handbuchs zu finden sind.

Rückgabe eines beschädigten Produkts (RMA)

Bevor Sie ein Hardwareprodukt zurücksenden, sollten Sie sich vom Intel Kundendienst eine sogenannte RMA-Nummer zuweisen lassen, indem Sie eine der folgenden gebührenpflichtigen Telefonnummern anrufen:

| Land | Telefon | Sprache |
|-------------|-----------------------|-------------|
| Frankreich | +33 (0) 1 41 91 85 29 | Französisch |
| Deutschland | +49 (0) 69 9509 6099 | Deutsch |
| Italien | +39 (0) 2 696 33276 | Italienisch |
| GB | +44 (0) 870 607 2439 | Englisch |

Nachdem die Beschädigung vom Kundendienst bestätigt worden ist, wird von der zuständigen Abteilung eine Rückgabenummer (RMA-Nummer) ausgegeben, die auf der äußeren Verpackung der Hardware angebracht werden muß. Intel akzeptiert kein Produkt ohne RMA-Nummer auf der Verpackung.

Haftungsbeschränkung und Rechtsmittel

INTEL HAFTET NICHT FÜR INDIREKTE ODER SPEKULATIVE SCHÄDEN (EINSCHLIESSLICH ALLER FOLGESCHÄDEN SOWIE ALLER ZUFÄLLIGEN UND BESONDEREN SCHÄDEN), DIE DURCH DIE VERWENDUNG ODER NICHTVERWENDBARKEIT DIESES PRODUKTS ENTSTEHEN, SEI DIES IM ZUSAMMENHANG MIT EINER VERTRAGLICHEN VERPFLICHTUNG, AUFGRUND VON FAHRLÄSSIGKEIT, DURCH UNERLAUBTE HANDLUNGEN ODER IM RAHMEN EINER GARANTIE. DIES GILT AUCH FÜR FÄLLE, IN DENEN INTEL ÜBER DIE MÖGLICHKEIT SOLCHER SCHÄDEN, DIE SICH UNTER ANDEREM DURCH NUTZUNGS-AUSFÄLLE, BETRIEBSUNTERBRECHUNGEN UND GEWINNVERLUSTE ERGEBEN KÖNNEN, IN KENNTNIS GESETZT WURDE.

UNGEACHTET DER GEWÄHRTEN GARANTIE ÜBERSTEIGT DIE HAFTUNG VON INTEL IM RAHMEN DIESER VEREINBARUNG IN KEINEM FALL DEN KAUFPREIS DES HARDWAREPRODUKTS. DIESE HAFTUNGSBESCHRÄNKUNG IST EIN WESENTLICHER FAKTOR BEI DER FESTLEGUNG DES PREISES FÜR DAS HARDWAREPRODUKT. INTEL ÜBERNIMMT KEINE WEITERE HAFTUNG UND ERTEILT DRITTEN KEINERLEI BEFUGNIS, FÜR INTEL EINE WEITERE HAFTUNG ZU ÜBERNEHMEN.

Steuer- und Überwachungsanwendung von hoher Wichtigkeit: Intel schließt insbesondere die Haftung bei der Verwendung des Hardwareprodukts mit Steueranwendungen von hoher Wichtigkeit (z.B. Sicherheits- und Krankenversicherungssysteme, Steuersysteme für Nuklearanlagen sowie Verkehrsüberwachungssysteme für Boden- und Luftverkehr) durch den Lizenznehmer oder Unterlizenznehmer ab, und eine derartige Verwendung liegt ausschließlich in der Verantwortung des Benutzers. Der Lizenznehmer erklärt sich bereit, Intel zu verteidigen und schadlos zu halten bezüglich aller Klagen, die aus der Verwendung eines Hardwareprodukts für solche Zwecke vom Lizenznehmer oder Unterlizenznehmern erhoben werden.

Software: Die mit diesem Hardwareprodukt gelieferte Software wird von der oben beschriebenen Hardwaregarantie nicht abgedeckt. Bitte lesen Sie die entsprechende Softwarelizenzvereinbarung, die mit dem Hardwareprodukt geliefert wurde, um genaue Informationen zur Softwaregarantie zu erhalten.

Diese eingeschränkte Hardwaregarantie unterliegt den Gesetzen von England und Wales. Die englischen Gerichte sind Gerichtsstand für alle Klagen, die im Rahmen der Garantie erhoben werden.

Garantía limitada de hardware (sólo para Europa)

Intel garantiza al propietario original que el producto de hardware entregado en este paquete no tendrá defectos de materiales ni fabricación durante tres (3) años contados a partir de la fecha que resulte más reciente de entre las opciones siguientes: (i) la fecha de compra, sólo si devuelve la tarjeta de registro con prueba de compra de la forma indicada al respecto para registrarse; o bien (ii) la fecha de fabricación; o (iii) la fecha de registro, si éste se ha producido por medios electrónicos y dentro de los treinta (30) días siguientes a la compra. Esta garantía no cubre los daños sufridos por el producto durante el proceso de instalación. Intel recomienda que sea la empresa a la que adquirió el producto la que se encargue de su instalación.

INTEL SE RESERVA EL DERECHO DE CUMPLIMENTAR EL PEDIDO CON UN PRODUCTO QUE CONTENGA COMPONENTES NUEVOS O REFRABRICADOS. LA GARANTÍA ANTERIOR PREVALECE SOBRE CUALQUIER OTRA GARANTÍA, YA SEA EXPLÍCITA, IMPLÍCITA O REGLAMENTARIA, INCLUIDAS, SIN LIMITACIÓN, CUALESQUIERA GARANTÍAS DE NO INFRINGIMIENTO DE LA PROPIEDAD INTELECTUAL, CALIDAD SATISFACTORIA, ADECUACIÓN PARA UNA FINALIDAD DETERMINADA O CUALQUIER GARANTÍA SURGIDA DE CUALQUIER PROPUESTA, ESPECIFICACIÓN, MUESTRA O DE OTRA CLASE.

Esta garantía no cubre la sustitución de productos dañados por abuso, accidente, mal uso, negligencia, alteración, reparación, desastre, instalación incorrecta o pruebas incorrectas. Si el producto tuviera cualquier otro defecto, Intel se reserva la opción de reemplazar o reparar el producto sin cargo alguno, excepto los descritos a continuación, siempre que el producto se entregue con un número de autorización de devolución de material (RMA), a (a) la empresa a la que se adquirió o (b) a Intel, sólo en América del Norte (si lo adquirió en Europa, debe entregar el producto a "(a)"). Si envía el producto, debe asumir el riesgo de daños o pérdida en el transporte. Debe utilizar el embalaje original (o equivalente) y costear los gastos de envío. Intel puede reemplazar o reparar el producto con piezas o productos nuevos o refabricados, y el producto devuelto pasa a ser propiedad de Intel. Intel garantiza que el producto reparado o reemplazado no tendrá defectos materiales ni de fabricación durante el periodo que resulte mayor de los siguientes: (i) noventa (90) días desde la fecha de envío; o (ii) el periodo de tiempo restante de la garantía original de tres (3) años.

Esta garantía le otorga derechos legales concretos y puede tener otros derechos que varían según la jurisdicción. Todas las piezas o componentes que contiene este producto están cubiertos por la garantía limitada de Intel sobre este producto; el producto puede contener piezas recicladas, completamente comprobadas, garantizadas como si de piezas nuevas se tratase. Si desea obtener más información sobre la garantía, puede llamar a uno de los números indicados a continuación.

Devolución de productos defectuosos (RMA)

Antes de devolver cualquier producto, póngase en contacto con el grupo de Asistencia al cliente de Intel y obtenga un número RMA en uno de los siguientes números no gratuitos:

| País | Número | Idioma |
|-------------|-----------------------|----------|
| Francia | +33 (0) 1 41 91 85 29 | Francés |
| Alemania | +49 (0) 69 9509 6099 | Alemán |
| Italia | +39 (0) 2 696 33276 | Italiano |
| Reino Unido | +44 (0) 870 607 2439 | Inglés |

Si el grupo de Asistencia al cliente comprueba que el producto es defectuoso, se podrá en contacto con el Departamento de autorización de devolución de material para que éste le envíe un número RMA que debe colocar en el envoltorio externo del producto. Intel no puede aceptar productos sin el número RMA en el paquete.

LIMITACIÓN DE RESPONSABILIDAD Y REPARACIONES

INTEL NO SERÁ RESPONSABLE DE NINGÚN DAÑO INDIRECTO O ESPECULATIVO (INCLUIDOS, SIN LIMITAR A LOS ANTERIORES, LOS DAÑOS INDIRECTOS, INCIDENTALES Y ESPECIALES) PRODUCIDO POR EL USO O POR LA IMPOSIBILIDAD DEL USO DE ESTE PRODUCTO, YA PROVENGA DE CONTRATO, NEGLIGENCIA, AGRAVIO O BAJO CUALQUIER GARANTÍA, SIN IMPORTAR QUE INTEL HAYA RECIBIDO PREVIO AVISO DE LA POSIBILIDAD DE DICHOS DAÑOS, INCLUIDOS, AUNQUE NO LIMITADOS A, PÉRDIDAS DE USO, INFRINGIMIENTO DE LA PROPIEDAD INTELECTUAL, SUSPENSIÓN DEL EJERCICIO COMERCIAL Y PÉRDIDA DE BENEFICIOS, A PESAR DE LO ANTERIOR, TODA LA RESPONSABILIDAD DE INTEL SOBRE LAS RECLAMACIONES REALIZADAS BAJO ESTE ACUERDO NO EXCEDERÁ EL PRECIO PAGADO POR EL PRODUCTO. ESTAS LIMITACIONES SOBRE LAS RESPONSABILIDADES POTENCIALES HAN CONSTITUIDO UN ELEMENTO ESENCIAL A LA HORA DE DETERMINAR EL PRECIO DEL PRODUCTO. INTEL NO ASUME NI AUTORIZA QUE NINGUNA PERSONA ASUMA EN SU LUGAR NINGUNA OTRA RESPONSABILIDAD.

Aplicaciones de control crítico: Intel deniega específicamente la responsabilidad por el uso del producto de hardware en aplicaciones de control crítico (incluidos, sólo a modo de ejemplo, los sistemas de seguridad o atención sanitaria, sistemas de control de energía nuclear o sistemas de control de tráfico aéreo o rodado) por Receptores o Subreceptores de la Licencia, y dicho uso queda enteramente a riesgo del usuario. El Receptor de la Licencia acuerda defender, indemnizar y mantener la inocencia de Intel por y contra toda reclamación surgida del uso del producto de hardware en tales aplicaciones por parte del Receptor o Subreceptor de la Licencia.

Software: El software proporcionado con el producto de hardware no está cubierto por la garantía de hardware descrita anteriormente. Si desea obtener información detallada sobre las garantías de software, consulte el acuerdo de licencia correspondiente al software incluido con el producto de hardware.

Esta garantía limitada de hardware se regirá e interpretará de acuerdo con las leyes de Inglaterra y Gales. Los tribunales de Inglaterra tendrán la exclusiva jurisdicción sobre todas las reclamaciones presentadas bajo esta garantía.

Intel Customer Support

Automated Support

You can reach Intel's automated support services 24 hours a day, every day at no charge. The services contain the most up-to-date information about Intel products. You can access installation instructions, troubleshooting information, and general product information.

World Wide Web & Internet FTP

Access Intel's World Wide Web page or download information using anonymous FTP.

How to Access: WWW

Customer Support: <http://support.intel.com>

News: <news://cs.intel.com>

FTP

Host: <download.intel.com>

Customer Support Technicians

Free support for 90 days: You can speak with our technical support professionals free of charge for 90 days after your initial call.

North America only: (916) 377-7000

Other support services: You can purchase a range of support services, including 24-hour support, per-incident support, on-site service, and software and hardware maintenance agreements. For details about the Intel Support Service options, go to our Web site at <http://support.intel.com/services> and choose your geography.

Worldwide access: Intel has technical support centers worldwide. Many of the centers are staffed by technicians who speak the local languages. Go to our Web site at <http://www.intel.com/intel/contact> to find the Intel support center for your geography.

| Country | Number | Country | Number |
|----------|-----------------------|--------------------|------------------|
| France | +33 (0) 1 41 91 85 29 | Australia (Sydney) | +1-800-649-931 |
| Germany | +49 (0) 69 9509 6099 | Hong Kong | +852-2-844-4456 |
| Italy | +39 (0) 2 696 33276 | Korea | +822-767-2595 |
| UK | +44 (0) 870 607 2439 | Singapore | +65-831-1311 |
| Japan | +81-298-47-0800 | Taiwan | +886-2-718-9915 |
| PRC | +800-820-1100 | Indonesia | +001-803-65-7249 |
| Malaysia | +1-800-80-1390 | New Zealand | +0-800-444-365 |
| India | +0006517,8311-311 | Thailand | +1-800-631-0003 |

If you don't have access to automated services, contact your local dealer or distributor. Or call +1-916-377-7000 from 07:00 to 17:00 Monday through Friday, U.S. Pacific Time.

732041-001