

Schubert, Winterreise, Op. 89
"Gefror'ne Thränen"

Gefror'ne Tropfen fallen
von meinen Wangen ab:
ob es mir denn entgangen,
dass ich geweinet hab'?

Ei Thränen, meine Thränen,
und seid ihr gar so lau,
dass ihr erstarrt zu Eise,
wie kühler Morgenthau?

Und dringt doch aus der Quelle
der Brust so glühend heiss,
als wolltet ihr zerschmelzen
des ganzen Winters Eis.

Wilhelm Müller

Frozen drops fall
from my cheeks.
Has it escaped me
that I have wept?

O, tears, my tears,
are you so tepid
that you congeal to ice,
like cool morning dew?

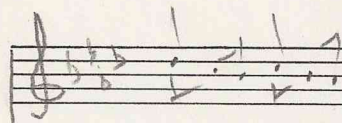
And yet surge forth from the breast's
source so glowing hot,
as though you would melt
all the winter's ice.

Comments on Schubert
Op. 109 Tränen

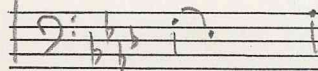
Measure numbers
MOTIVES!

bass unfolding - bass beginning m. 3
Fm. ARAGG. in mm. 19-21
Do not omit intro
Cmc. $\frac{6}{4}$

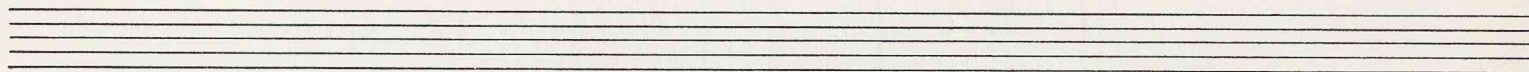
m. 5



$\frac{6}{4}$



because of: $\frac{6}{4}$ $\frac{6}{4}$ $\frac{6}{4}$



SCHUBERT: GEFROR'NE TRÄNEN (WINTERREISE)

Musical notation for measures 5, 11, 12, 16, and 21. Includes handwritten annotations: circled 'A' and 'C', 'R.T.', and Roman numerals (I, III, V, I, III, V).

Musical notation for measures 21, 31, and 38. Includes handwritten annotations: 'Return to upper voice', circled 'A' and 'C', and Roman numerals (V, III, I, V).

Musical notation for measures 39 and 48. Includes handwritten annotations: 'no class', circled 'A' and 'C', and Roman numerals (V, III).

Handwritten musical diagram showing notes B, A, G, F with circled 'A' and 'C' below them. Includes the note 'rhythmic as well as melodic (upbeat)'.

Schubert - Gefühls Träne *mf*, bar 6 Requies extra 2 bars (28-29)

(21) *fg aux. prepared*

MELODIC - RHYTHMIC ASSOCIATIONS + DEVELOP.

FOREGROUND

MISDEVELOPMENT

NB. Influence of Fg on my in Schubert - general

(13)

(6)

33

Accompanied motive in bass

39.

Handwritten musical score for two staves. The top staff is in treble clef and the bottom staff is in bass clef. Both are in a key with three flats (B-flat major or D-flat minor). The top staff contains a melodic line with notes and rests, and a chordal accompaniment below it. The bottom staff contains a bass line with notes and rests. There are some handwritten annotations like '+6' and 'f' below the top staff.

Schubert, Gefrorene Tränen (Winterreise)

Handwritten musical score for the first system, measures 1-15. The score is in G major (one sharp) and 3/4 time. It features a treble and bass staff. Annotations include: *coupling*, *R.T.*, *[arpeggi.]*, *bass arpeggi.*, *cons. a*, and *5-6*. Measure numbers 5, 6, 10, 13, and 15 are circled.

Handwritten musical score for the second system, measures 16-32. The score continues with treble and bass staves. Annotations include: *Rhythmic motive*, *Tränen*, *d. mm. 8-9*, *und dringt*, *[f. mm. 6-7]*, and *f. F-G-A-B mm. 3-6*. Measure numbers 16, 19, 25, 31, and 32 are circled.

Handwritten musical score for the third system, measures 34-49. The score continues with treble and bass staves. Annotations include: *3er-schmelzen*, *wollt*, *Eis*, *Breit*, *= m. 34*, and *AB V*. Measure numbers 34, 37, 38, 40, 47, and 49 are circled.

Handwritten musical score for the fourth system, measures 50-55. The score continues with treble and bass staves. Annotations include: *G^b (bII)?* and *(no, gb' / a#')*. Measure numbers 50, 51, 52, 53, 54, and 55 are circled.

Coda not shown