



Harsh & Hazardous

RIGPOWER

Creating New Industry Standards

Secure Mount[®] & Stab Series



INTRODUCTION

RigPower's mission is to create new industry standards in industrial electrical connectors by combining appropriate technological advances, quality production methods and dependable customer support.

The Secure Mount® series was designed using the latest technological advances in materials and designs to help protect roughnecks and equipment while providing ease of installation and superior electrical connections. Drilling industry tested for added safety, function, and durability.

Applications

The Secure Mount® series (U.S. Patent 7,399,194) provides economical yet secure connection of 1,000 volts AC or DC loads up to 1,135 amps. The Secure Mount® is compatible with existing socket and pin style connectors, but offers increased withdrawal protection, easier phase identification, simplified mounting, improved electrical connection and improved working environment for all area workers.

Background

Existing board socket and pin connectors are mounted into a large expensive piece of insulating board, usually fiberglass or melamine, and requires a precision mounting hole. Small knurls on the shaft of the connectors are pressed into the mounting hole to prevent rotation. Over-tightening of the connector can easily strip the knurls out of the mounting hole, rendering the connector inoperable. Additionally, the design of the rear of the existing connector does not allow for direct attachment of a standard electrical lug and can not carry higher amp loads offered by the Secure Mount® receptacle.

Secure Mount® Receptacle With Mated Plug



Back Design of Single Hole Receptacle

Phase Identification

The Secure Mount® connectors are color coded to provide easy circuit identification. The receptacle flanges and mating boots are color coded to provide positive phase identification before and after connection. Color coding prevents reverse phasing or cross polarization of DC circuits. Colors are available for both AC and DC circuits.

AMPACITY RATINGS IN 40° AMBIENT		
CABLE SIZE	90°	125°
313 MCM	513 AMPS	636 AMPS
444 MCM	642 AMPS	796 AMPS
535 MCM	724 AMPS	898 AMPS
646 MCM	814 AMPS	1009 AMPS
777 MCM	916 AMPS	1135 AMPS

Type P Cables

RigPower's Secure Mount® series connectors are designed to work in conjunction with the latest generation of Type P drilling cables, per IEEE 45. Cable accommodations are 313 MCM through 777 MCM.

Available Colors



Secure Mount® Field Installation/Repair Kit

APPLICATIONS

This kit is designed to allow quick and easy field replacement of a PD-501 style connector with a Secure Mount® connector. The Kit contains enough supplies to field mount five Secure Mounts® in an existing panel.

FEATURES

- No replacement of insulating board is required, even damaged boards can be saved
- No need to remove adjacent undamaged connectors from insulation board
- Save cost, labor and downtime when field repairs are necessary

KIT CONTENTS

- Parts to field mount five Secure Mount® Receptacles.
1. Five Tapered wooden plugs
 2. One 3 and 3/4 inch diameter carbide tipped hole saw
 3. Twenty sets of mounting bolts
 4. Five adhesive drilling templates
 5. Complete instructions



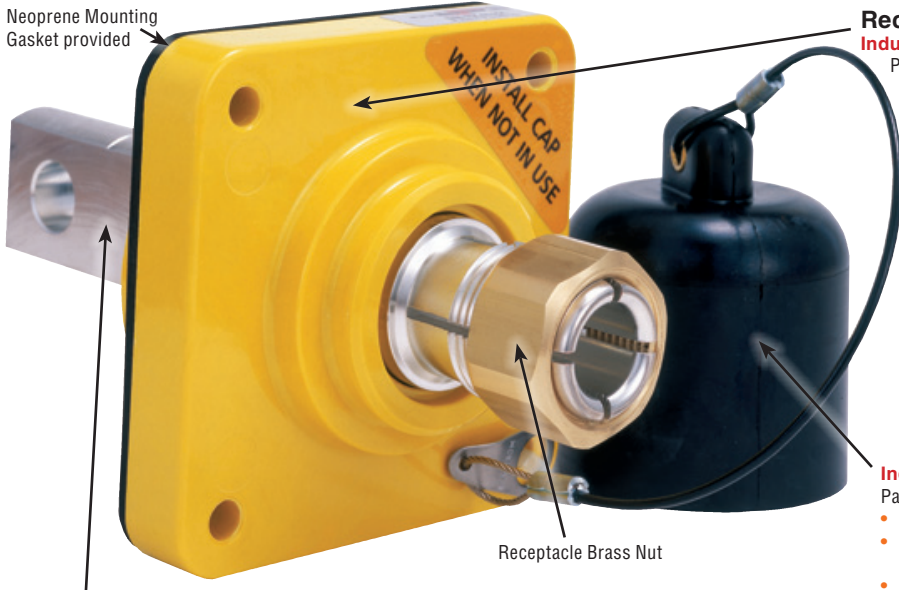
CONNECTORS

SECURE MOUNT® SERIES

INDUSTRY FEATURES AND BENEFITS

Application Information

The Secure Mount® Series connectors have been designed to safely distribute 1,135 Amps @ 1,000 volts, AC or DC, continuously. For personnel protection, the Panel Mounted Receptacle should always be covered by the provided safety cap when a cable is not connected. Contacts may be attached to cables by soldering or by crimping with the appropriate dies and equipment.



Receptacle

Industry Exclusive –

Panel Mounting Base (U.S. Patent 7,399,194) designed specifically with the requirements of the drilling industry in mind.

- Mounts directly into any stainless or aluminum panel which eliminates the need for expensive melamine or fiberglass board
- Uses four 5/16 bolts and nuts
- Design supports quick, easy installation and replacement, if required
- Allows operators to accurately space each receptacle on switchgear and SCR drives
- Large Color Coded Mounting Base is made from an Advanced Thermoset Glass filled Polymer
 - » UV resistant
 - » High temperature performance
 - » Provides easy phase identification before and after the cable is connected
 - » Available in ten colors

Industry Exclusive

Panel Mounted Receptacle Protective Cap

- Securely attached to Mounting Base for quick and easy use
- Protects roughnecks from accidentally coming into contact with receptacle tip when not in use
- Material: Black Neoprene

A robust Buss Bar style back provides for greater amperage rating.

- Rated at 1,000 volts AC or DC up to 1,135 amps
- Single or Double Hole Buss Bar
- Buss Bar back eliminates the need for copper flags
- Installation is quick, reliable and safer than jam nut style connectors
- Receptacle will not strip out like other board sockets
- Made from Duplex Sn plated high conductivity copper

Dust Cap

Industry Exclusive

Designed to securely connect to the rubber boot and provides protection to the cable end when not in use.

- Material: Black Neoprene



RUBBER BOOT

Industry Exclusive

Boots are made from a Proprietary Synthetic Thermoset Rubber (not Thermoplastic) with "Self-Lubricating" technology. The boots are resistant to oil, mud, sea water and petroleum products found in the drilling industry and are designed to provide weatherproof service in a variety of demanding environments. Correctly assembled, the connectors provide safe trouble-free operation in the most extreme working conditions.

Molded ring indicators on the cable end of the boot are designed to be cut down to accommodate cable sizes ranging from 313 MCM to 777 MCM.

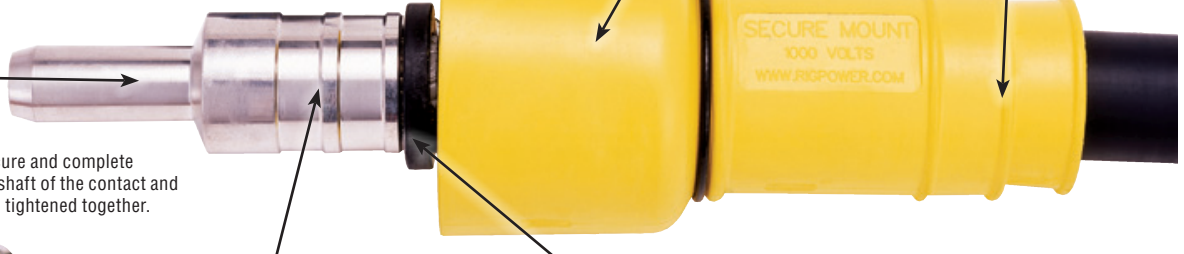
Contact

Industry Exclusive

Advanced design "Hammer Head" Contact (U.S. Patent 7,399,194)

Designed to ensure a secure and complete connection between the shaft of the contact and receptacle opening when tightened together.

- Designed to ensure a secure and complete connection between the shaft of the contact and receptacle opening when tightened together.



Double Crimp Style base is longer than other manufacturers, which provides a more complete and secure connection between the cable and contact.

- Crimping locators are designed into the base for ease of installation
- Uses the same crimping die sets as the RigPower "RMP® II" series
- Made from Duplex Sn plated high conductivity copper

Retention Ring

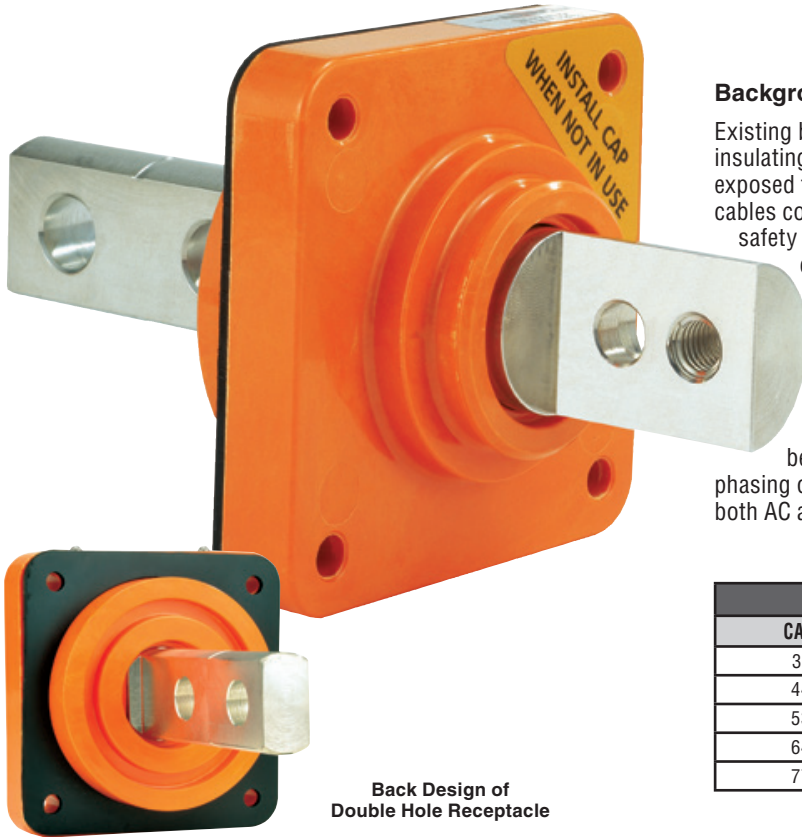
Industry Exclusive

- Helps prevent the loss of rubber boot when cable is not connected
- Made from Delrin® which is resistant to high temperatures

WARNING: The RigPower Secure Mount® series 646 and 777 contacts are designed for higher amperage loads than other panel board sockets can handle. Use these two contact sizes only with Secure Mount® Receptacles.



INTRODUCTION



Back Design of Double Hole Receptacle

Background

Existing bar stabs are mounted into a large expensive piece of insulating board, usually fiberglass or melamine, and are always exposed to the elements. There are usually one or two electrical cables connected to each bar stab using lugs that offer no personnel safety after being connected. While electrical tape may be used to cover these connections, this is time consuming and does not allow for easy access.

Phase Identification

The Safe Stab® connectors are color coded to provide easy circuit identification. The receptacle flanges and mating boots are color coded to provide positive phase identification before and after connection. Color coding prevents reverse phasing or cross polarization of DC circuits. Colors are available for both AC and DC circuits.

AMPACITY RATINGS IN 40° AMBIENT

CABLE SIZE	90°	125°
313 MCM	513 AMPS	636 AMPS
444 MCM	642 AMPS	796 AMPS
535 MCM	724 AMPS	898 AMPS
646 MCM	814 AMPS	1009 AMPS
777 MCM	916 AMPS	1135 AMPS

RigPower's mission is to create new industry standards in industrial electrical connectors by combining appropriate technological advances, quality production methods and dependable customer support.

The Safe Stab® series was designed using the latest technological advances in materials and designs to help protect roughnecks and equipment while providing ease of installation and superior electrical connections. Drilling industry tested for added safety, function, and durability.

Applications

The Safe Stab® series (**U.S. Patent 7,854,636**) is a unique design providing economical yet secure connection of 1,000 volts AC or DC loads up to 1,135 amps. Until now there has never been an alternative to the bar stabs used on most SCR houses. The Safe Stab® offers increased protection, easier phase identification, simplified mounting, improved electrical connection and an improved working environment for all area workers. The Safe Stab® series was designed to eliminate large exposed stabs, and unlike existing bar stabs, the Safe Stab® Flange base does not require the use of expensive fiberglass or melamine boards. Additionally, the Safe Stab® features a color coded flange for quick identification, a protective stab cap when not connected, and a protective color coded boot for when the stab lug is connected.

Type P Cables

RigPower's Safe Stab® series connectors are designed to work in conjunction with the latest generation of Type P drilling cables, per IEEE 45. Accommodates cable sizes 313 MCM through 777 MCM.

Available Colors



CONNECTORS

SAFE STAB® SERIES

INDUSTRY FEATURES AND BENEFITS

Receptacle

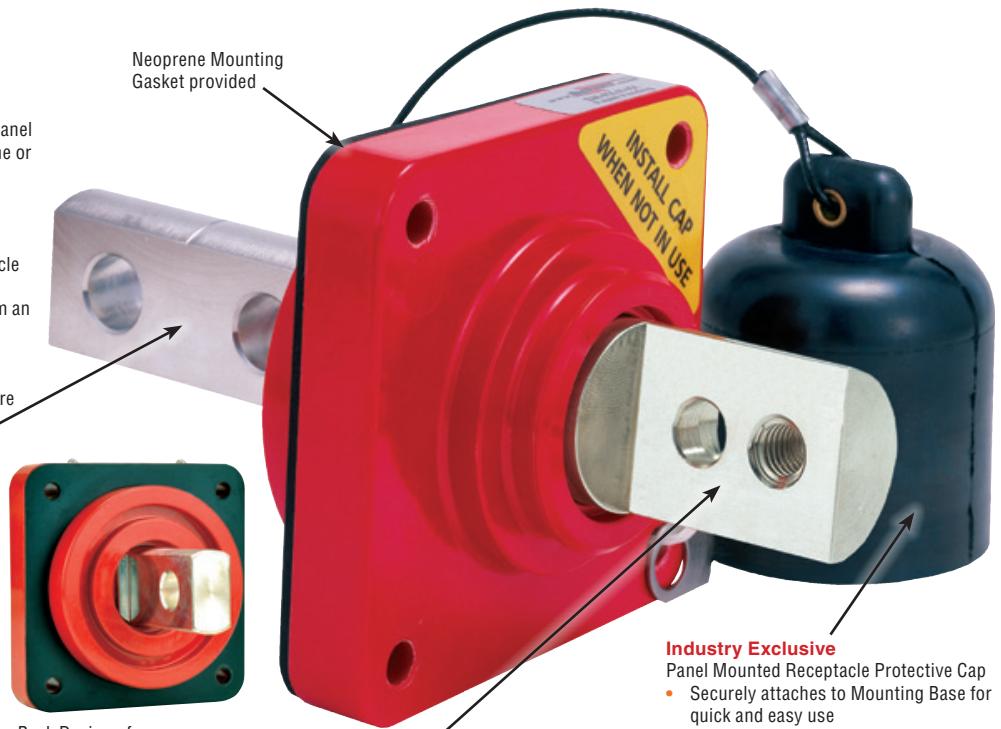
Industry Exclusive

The Receptacle Flange (U.S. Patent 7,854,636) was designed specifically with the requirements of the drilling industry in mind.

- Mounts directly into any stainless or aluminum panel which eliminates the need for expensive melamine or fiberglass board.
- Uses four 5/16 bolts and nuts
- Design supports quick, easy installation and replacement, if needed
- Product allows accurate spacing of each receptacle on switch gear and SCR drives
- Large Color Coded Mounting Flange is made from an Advanced Thermoset Glass filled Polymer
 - » UV resistant
 - » High temperature performance
 - » Provides easy phase identification before and after the cable is connected
 - » Available in ten colors

A robust Buss Bar style back provides for larger current loads.

- Rated at 1,000 volts AC or DC up to 1,135 amps
- Installation and breakdown is quick and reliable
- Single or Double Hole Buss Bar
- Made from Duplex Sn plated high conductivity copper



Neoprene Mounting Gasket provided



Back Design of Single Hole Receptacle

Industry Exclusive

Panel Mounted Receptacle Protective Cap

- Securely attaches to Mounting Base for quick and easy use
- Protects roughnecks from accidentally coming into contact with receptacle tip when not in use
- Material: Black Neoprene

RUBBER BOOT

Industry Exclusive

Boots are made from a Proprietary Synthetic Thermoset Rubber (not Thermoplastic) with "Self-Lubricating" technology. The boots are resistant to oil, mud, sea water and petroleum products found in the drilling industry and are designed to provide weather proof service in a variety of demanding environments. Correctly assembled, the connectors provide safe trouble-free operation in the most extreme working conditions.

Molded ring indicators on the cable end of the boot are designed to be cut down to accommodate cable sizes ranging from 313 MCM to 777 MCM.



Dust Cap

Industry Exclusive

Designed to securely connect to the rubber boot and provides protection to the cable end when not in use.

- Material: Black Neoprene

Safe Stab® Lug

Industry Exclusive

Advanced "half lap" design (U.S. Patent 7,854,636) contact surface.

- Designed to ensure a secure and vibration immune connection between the cable lug and the panel mounted stab
- Made from Duplex Sn plated high conductivity copper
- Connects using two stainless steel locking screws (provided) with Helicoil inserts
- Ease of installation – no man-hours wasted on taping over lug connections and no exposed energized parts



Retention Ring

Industry Exclusive

- Helps prevent the loss of rubber boot when cable is not connected
- Made from Delrin® which is resistant to high temperatures

Application Information

The Safe Stab® Series connectors have been designed to safely distribute 1,135 Amps @ 1,000 Volts AC or DC power continuously. Lugs may be attached to cable by soldering or by crimping with the appropriate dies and equipment.

FOR PERSONNEL PROTECTION: THE PANEL MOUNTED "SAFE STAB®" RECEPTACLE SHOULD ALWAYS BE COVERED BY THE PROVIDED SAFETY CAP WHEN A CABLE IS NOT CONNECTED.

CONNECTOR

The Quad Stab™ Series uses the same technological advances in materials and design as the Secure Mount®, Safe Stab® and Quick Stab®. RigPower's directive is to protect roughnecks and equipment while providing ease of installation and superior electrical connections in the field or during build-out. Drilling industry tested for added safety, function, and durability.

Applications

The Quad Stab™ (U.S. Patent 7,854,636) was designed to eliminate large exposed copper stabs. Unlike existing bar stabs, the Quad Stab Flange does not require the use of expensive fiberglass or melamine boards and provides gasket sealed protection. Additionally, the Quad Stab™ offers easy color phase identification, simplified lug-up mounting, improved electrical connection and improved working environment for all area workers. Provides economical yet secure connection of 1,000 volts AC or DC loads, up to an incredible 4,000 amps.

Receptacle

Industry Exclusive – Panel Mounting Base is designed specifically with the requirements of the drilling industry in mind.

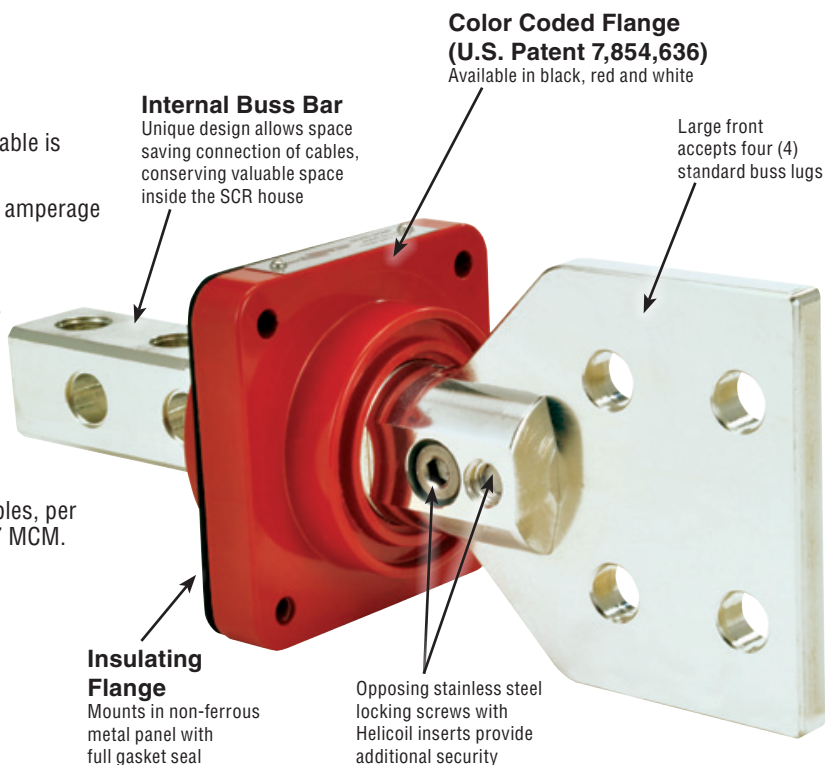
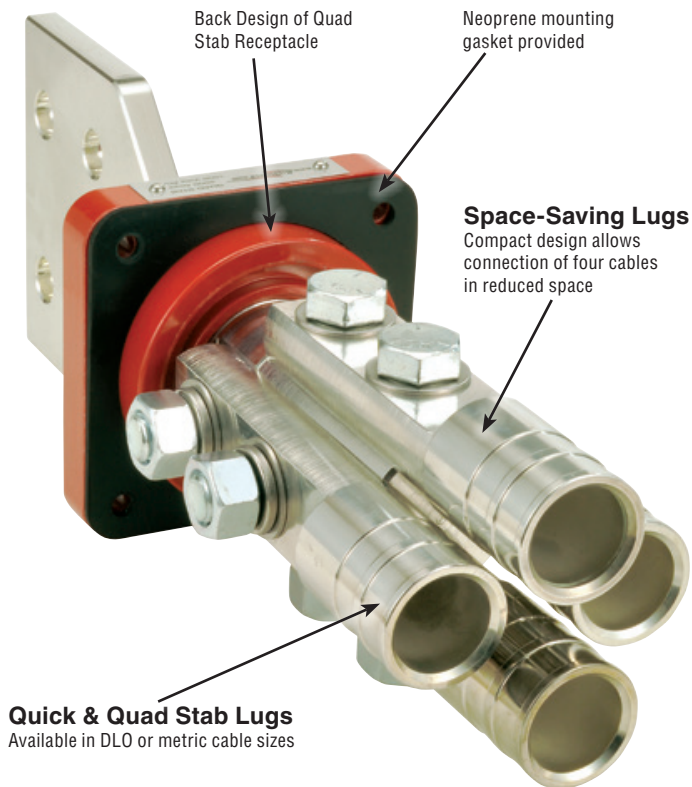
- Mounts directly into any stainless or aluminum panel which eliminates the need for expensive melamine or fiberglass board
- Uses four 5/16 bolts and nuts
- Design supports quick, easy installation and replacement, if needed
- Allows operators to accurately space each receptacle on switchgear and SCR drives
- Large Color Coded Mounting Base is made from an Advanced Thermoset Glass filled Polymer
- UV resistant
- High temperature performance
- Available in black, red and white.
- Provides easy phase identification before and after the cable is connected

A robust four hole Buss Bar style back provides for greater amperage rating.

- Rated at 1,000 volts AC or DC up to 4,000 amps
- Installation is quick, reliable and safer than copper stabs and provides gasket sealing
- The Sn plated high conductivity copper stab is designed for use with standard double hole lugs

Type P Cables

RigPower's Quad Stab connectors are designed to work in conjunction with the latest generation of Type P drilling cables, per IEEE 45. Accommodates cable sizes 313 MCM through 777 MCM.



Rated 1,000 volts
AC/DC 4,000 amps at 125° C

CONNECTORS

QUAD STAB™ SERIES

CONNECTOR

Applications

The Quad Stab™ Series (U.S. Patent 7,854,636) horizontal and vertical options were designed to eliminate large exposed copper stabs. Unlike existing bar stabs, the Quad Stab Flange base does not require the use of expensive fiberglass or melamine boards and provides gasket sealed protection. Additionally, the Quad Stab™ offers easy color phase identification, simplified lug-up mounting, improved electrical connection and improved working environment for all area workers. Provides economical yet secure connection of 1,000 volts AC or DC loads and up to an incredible 4,000 amps.

Quick & Quad Stab Lug

Advanced Designed to ensure a secure and vibration immune connection between the cable lug and the panel mounted stab

- Machined from Duplex Sn plated high conductivity copper, not stamped
- Ease of installation of lugs using standard 5/8 bolts
- Available in sizes 535, 646 & 777



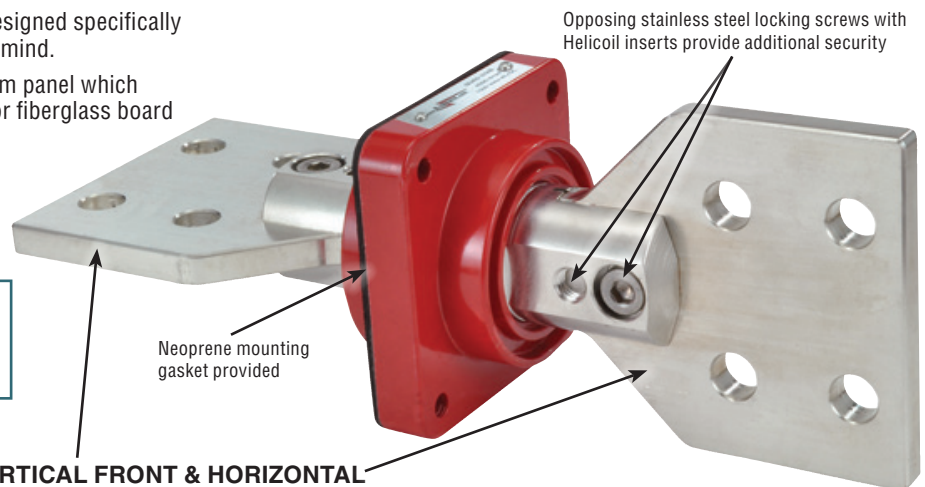
Receptacle

Industry Exclusive – Panel Mounting Base is designed specifically with the requirements of the drilling industry in mind.

- Mounts directly into any stainless or aluminum panel which eliminates the need for expensive melamine or fiberglass board
- Uses four 5/16 bolts and nuts
- Design supports quick, easy installation and replacement, if needed

INSULATING COLOR CODED FLANGE (U.S. Patent 7,854,636)

Mounts in non-ferrous metal panel with full gasket seal. Available in black, red and white only



VERTICAL FRONT & HORIZONTAL BACK BUSS PLATES

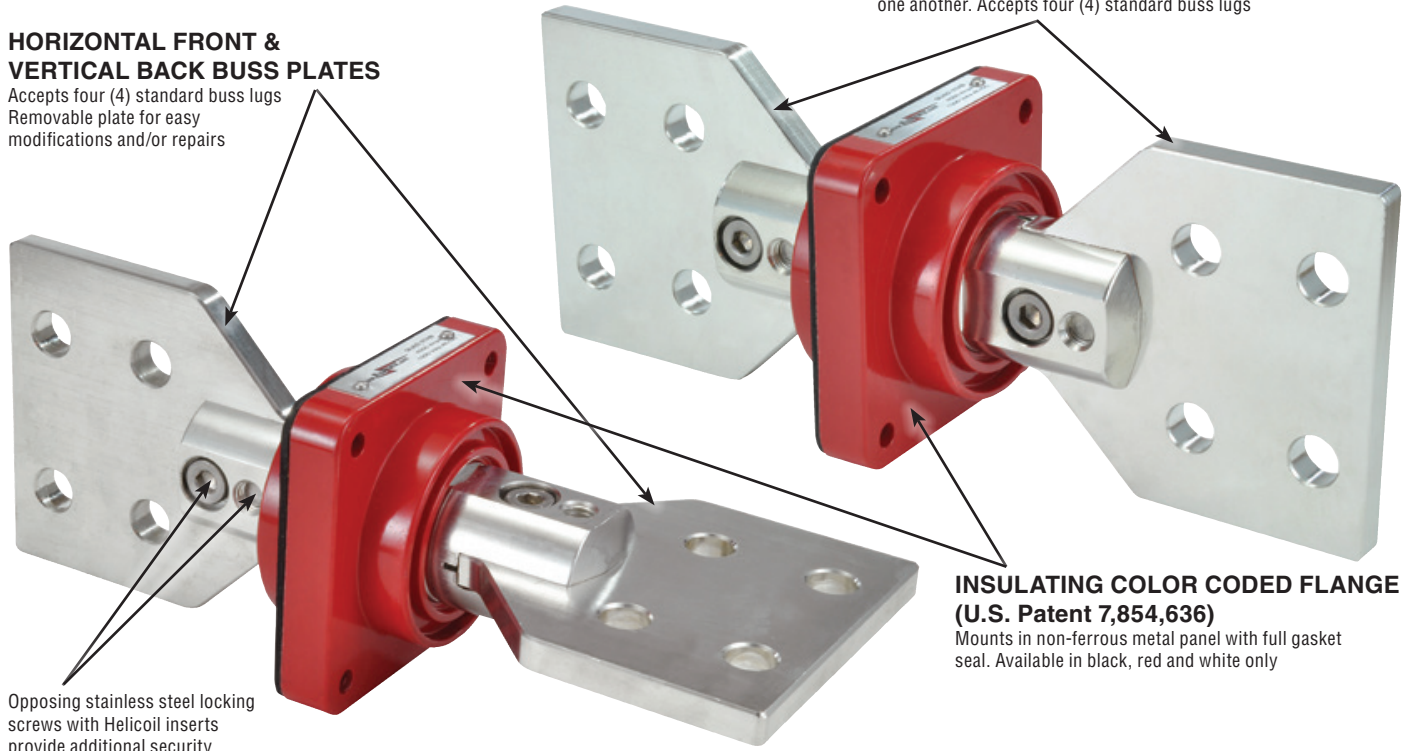
Accepts four (4) standard buss lugs

HORIZONTAL FRONT & BACK BUSS PLATES

Large front & back buss plates in a parallel position to one another. Accepts four (4) standard buss lugs

HORIZONTAL FRONT & VERTICAL BACK BUSS PLATES

Accepts four (4) standard buss lugs
Removable plate for easy modifications and/or repairs



INSULATING COLOR CODED FLANGE (U.S. Patent 7,854,636)

Mounts in non-ferrous metal panel with full gasket seal. Available in black, red and white only

Opposing stainless steel locking screws with Helicoil inserts provide additional security

CONNECTOR

The Quick Stab® was developed out of the necessity to provide the drilling industry with a generator input/output connector rated for up to 2,000 amps. Color coding was demanded as well as eliminating the use of fiberglass and melamine panel boards. Thus the Quick Stab® was designed, utilizing the same technological advances as the earlier Secure Mount® and Safe Stab® product lines. Drilling industry tested for added safety, function and durability.

Applications

The Quick Stab® (U.S. Patent 7,854,636) was designed to eliminate large exposed copper stabs. Offering convenience, gasket seal protection and simplified lug-up mounting. The Quick Stab® is reliable for use up to 1,000 volts AC or DC loads and up to 2,000 amps. These color-coded stabs work in all environments and help protect workers and equipment.

Receptacle

Industry Exclusive – Panel Mounting Base is designed specifically with the requirements of the drilling industry in mind.

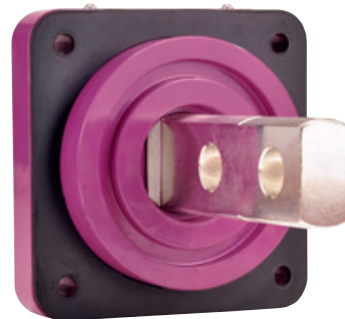
- Mounts directly into any stainless or aluminum panel which eliminates the need for expensive melamine or fiberglass board
- Uses four 5/8 bolts and nuts
- Design supports quick, easy installation and replacement, if needed

2,000 Amp rated “Quick Stab®” Connector**Ideal for generator inputs and ground lug-up**

- Tired of trying to bend and fit 2,000 amps buss bar into your control house?
- Tired of trying to fit and seal melamine board around your buss bars?
- Need a quick and safe way to color code your buss inputs?

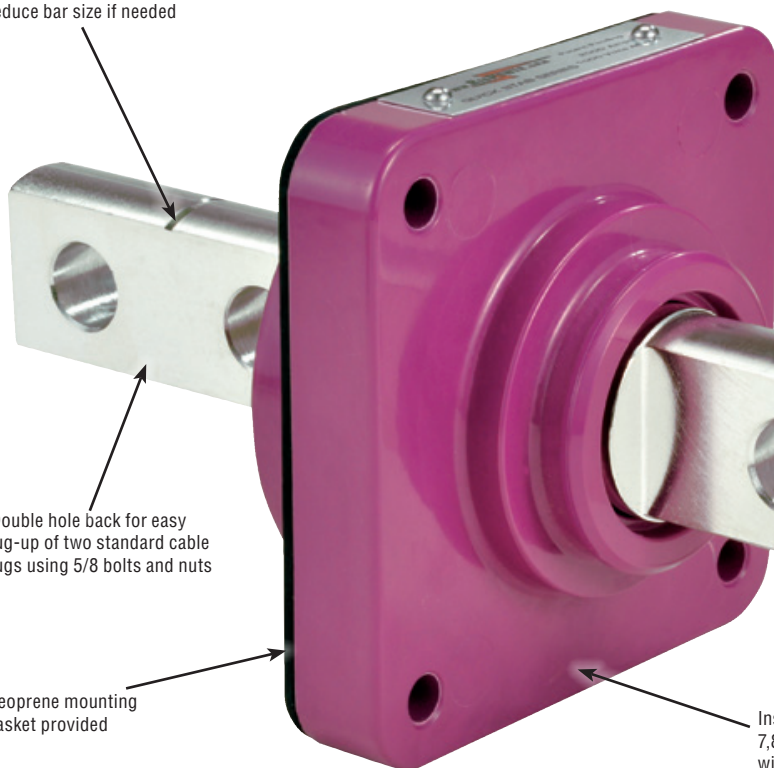
Then you need the RigPower “Quick Stab®” connector.

- The Quick Stab® allows connection of two 313-777 MCM cables on either side of a sealed bulkhead or panel
- The mounting base is available in ten colors to allow rapid phase identification of each connection
- Melamine insulator board is not required for mounting of the Quick Stab®
- Rated for 2,000 amps, 1,000 volts
- Front and back buss bar design fits standard two hole lugs
- Made from Sn plated high conductivity copper
- Easy to install



Back Design of
Double Hole Receptacle

Single hole cut locator to
reduce bar size if needed



Double hole back for easy
lug-up of two standard cable
lugs using 5/8 bolts and nuts

Neoprene mounting
gasket provided

Double hole front for easy lug-up of two
standard cable lugs using 5/8 bolts and nuts

Insulating Color Coded Flange (U.S. Patent
7,854,636). Mounts in non-ferrous metal panel
with full gasket seal. Available in ten colors

CONNECTORS

QUICK STAB® SERIES

CABLE REPAIR SPLICE KITS

CS DOUBLE LAP STYLE SPLICE KIT

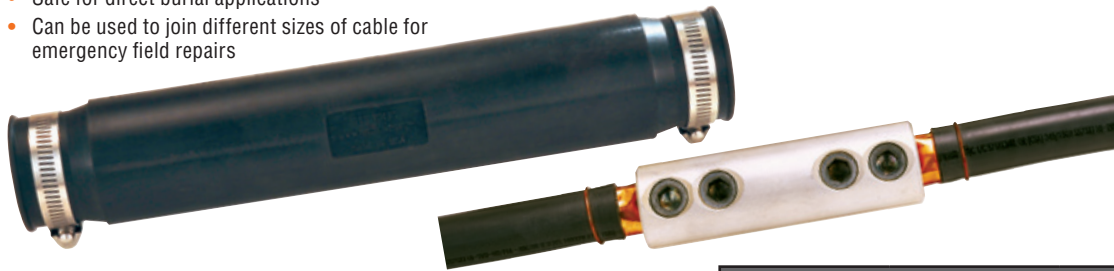
The CS Double Lap Style splice kits are designed for repair of a damaged or cut cable or for extending the length of a cable in the field. They are available for 535, 646 and 777 MCM wire. These splice connectors have been designed to operate safely at 1,000 volts AC or DC. The resulting splice will be no larger in diameter than a 777 cable.

Different size cables may be joined by using mismatched splice kit ends. This feature is useful where existing cable must be extended or long section needs to be replaced. A section of larger cable can be added to provide adequate protection from voltage drop or used to reduce the cable inventory carried for repairs. Note that the current rating will be controlled by the smaller cable size.

The individual splice halves may be crimped on to the cable at ground level then assembled high in a cable tray or passed through a cable gland and assembled inside a junction box.

Applications

- For making permanent or semi-permanent field connections of cable ends
- Small enough to pass through cable glands
- Excellent for making secure connections inside explosion proof junction boxes
- Allows easy access to cable ends for secure crimp connections
- Safe and quick joining of splice ends in restricted spaces
- Safe for direct burial applications
- Can be used to join different sizes of cable for emergency field repairs



DS-350 DOUBLE SET SCREW SPLICE KIT

The DS-350 Double Set Screw splice kits are designed for repair of a damaged or cut cable or for extending the length of a cable in the field. They fit 350 to 500 MCM wire. These splice connectors have been designed to operate safely at 1,000 volts AC or DC.

Different size cables may be joined by using the DS-350 splice kit. This feature is useful where existing cable must be extended or long sections need to be replaced. A section of larger cable can be added to provide adequate protection from voltage drop or used to reduce the cable inventory carried for repairs. The current rating will be controlled by the smaller cable size.

The splices can be assembled with simple hand tools and hydraulic crimping equipment is not needed. Insulation retention feature prevents the insulation from slipping down the conductor when under strain and the pull-out strength exceeds the breaking strength of the cable.

Applications

For making permanent or semi-permanent field connections of cable ends. The DS-350 allows easy, yet secure, connection of cable ends with only hand tools. Excellent when crimping tools are not available. Safe for direct burial applications. Insulation retention ties prevent slippage of insulation on cable. Can be used to join different sizes of cable for emergency field repairs.

Materials

- Splice Body
- Sn Plated Brass with Stainless Steel Locking Screws
- Removable Boot insulator is held in place by two stainless hose clamps which provides moisture resistance protection (Pictured)
- 545 amps maximum continuous 1,000 volts AC or DC (as limited by cable)

Materials

- Splice Bodies
- Sn Plated Copper with Stainless Steel Helicoil Threaded Inserts
- Removable Boot Insulator is held in place by two stainless hose clamps and provides moisture resistance protection (Pictured)

CS DOUBLE LAP STYLE SPLICE KIT			
CONTACT SIZE	REMOVABLE BOOT	HEAT SHRINK	COLD SHRINK
444	CS-444-B	CS-444-H	CS-444-C
535	CS-535-B	CS-535-H	CS-535-C
646	CS-646-B	CS-646-H	CS-646-C
777	CS-777-B	CS-777-H	CS-777-C

NOTE: Different size cables may be joined by using mismatched splice kit ends; however the current rating will be controlled by the smaller cable size.

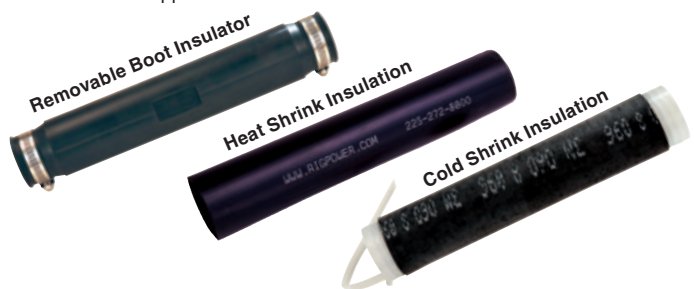
DS-350 DOUBLE SET SCREW SPLICE KIT			
CABLE SIZE	REMOVABLE BOOT	HEAT SHRINK	COLD SHRINK
313 - 500	DS-350-B	DS-350-H	DS-350-C

INSULATOR OPTIONS

The insulation is available in three styles: Heat Shrink, Cold Shrink, or a Removable Boot. The heat shrink provides the best sealing and allows direct underground burial. The cold shrink and removable boot provide NEMA 3 sealing.

3M™ Cold Shrink Connector Insulation is an open-ended, tubular, rubber sleeve which is factory expanded and assembled onto a removable core. The core is removed after the tube has been positioned for installation over an In-line connection, terminal lugs, etc., allowing the tube to shrink and form a water-resistant seal. The insulation tube is made of EPDM rubber which contains no chlorides or sulfur.

Flame retardant heavy wall tubing meets MIL Spec 23053/15 Class I requirements for flame retardancy. UL listed 486 D Standard and CSA certified for direct burial applications.



SECURE MOUNT® & STAB SERIES

PARTS LIST

SECURE MOUNT®

SECURE MOUNT® COMPLETE SET – SINGLE HOLE RECEPTACLE & CABLE END ASSEMBLIES

A Complete Set includes: (1) Single Hole Receptacle w/Gasket, Protective Cap and Brass Nut, (1) Contact - Size of your choice, (1) Insulating Boot w/Cap and Boot Retention Ring

COLOR	313 CONTACT	444 CONTACT	535 CONTACT	646 CONTACT	777 CONTACT
Black	SM-R1-N3-BK	SM-R1-N4-BK	SM-R1-N5-BK	SM-R1-N6-BK	SM-R1-N7-BK
Blue	SM-R1-N3-BL	SM-R1-N4-BL	SM-R1-N5-BL	SM-R1-N6-BL	SM-R1-N7-BL
Brown	SM-R1-N3-BR	SM-R1-N4-BR	SM-R1-N5-BR	SM-R1-N6-BR	SM-R1-N7-BR
Green	SM-R1-N3-G	SM-R1-N4-G	SM-R1-N5-G	SM-R1-N6-G	SM-R1-N7-G
Gray	SM-R1-N3-GY	SM-R1-N4-GY	SM-R1-N5-GY	SM-R1-N6-GY	SM-R1-N7-GY
Orange	SM-R1-N3-OR	SM-R1-N4-OR	SM-R1-N5-OR	SM-R1-N6-OR	SM-R1-N7-OR
Purple	SM-R1-N3-P	SM-R1-N4-P	SM-R1-N5-P	SM-R1-N6-P	SM-R1-N7-P
Red	SM-R1-N3-R	SM-R1-N4-R	SM-R1-N5-R	SM-R1-N6-R	SM-R1-N7-R
White	SM-R1-N3-W	SM-R1-N4-W	SM-R1-N5-W	SM-R1-N6-W	SM-R1-N7-W
Yellow	SM-R1-N3-Y	SM-R1-N4-Y	SM-R1-N5-Y	SM-R1-N6-Y	SM-R1-N7-Y

SECURE MOUNT® COMPLETE SET – DOUBLE HOLE RECEPTACLE & CABLE END ASSEMBLIES

A Complete Set includes: (1) Double Hole Receptacle w/Gasket, Protective Cap, and Brass Nut, (1) Contact - Size of your choice, (1) Insulating Boot w/Cap and Boot Retention Ring

COLOR	313 CONTACT	444 CONTACT	535 CONTACT	646 CONTACT	777 CONTACT
Black	SM-R2-N3-BK	SM-R2-N4-BK	SM-R2-N5-BK	SM-R2-N6-BK	SM-R2-N7-BK
Blue	SM-R2-N3-BL	SM-R2-N4-BL	SM-R2-N5-BL	SM-R2-N6-BL	SM-R2-N7-BL
Brown	SM-R2-N3-BR	SM-R2-N4-BR	SM-R2-N5-BR	SM-R2-N6-BR	SM-R2-N7-BR
Green	SM-R2-N3-G	SM-R2-N4-G	SM-R2-N5-G	SM-R2-N6-G	SM-R2-N7-G
Gray	SM-R2-N3-GY	SM-R2-N4-GY	SM-R2-N5-GY	SM-R2-N6-GY	SM-R2-N7-GY
Orange	SM-R2-N3-OR	SM-R2-N4-OR	SM-R2-N5-OR	SM-R2-N6-OR	SM-R2-N7-OR
Purple	SM-R2-N3-P	SM-R2-N4-P	SM-R2-N5-P	SM-R2-N6-P	SM-R2-N7-P
Red	SM-R2-N3-R	SM-R2-N4-R	SM-R2-N5-R	SM-R2-N6-R	SM-R2-N7-R
White	SM-R2-N3-W	SM-R2-N4-W	SM-R2-N5-W	SM-R2-N6-W	SM-R2-N7-W
Yellow	SM-R2-N3-Y	SM-R2-N4-Y	SM-R2-N5-Y	SM-R2-N6-Y	SM-R2-N7-Y

SECURE MOUNT® RECEPTACLE

Each Single and Double Hole Receptacle includes:
(1) Receptacle w/Protective Cap, (1) Gasket, (1) Brass Nut

SINGLE HOLE	COLOR	DOUBLE HOLE
SM-R1-N-BK	Black	SM-R2-N-BK
SM-R1-N-BL	Blue	SM-R2-N-BL
SM-R1-N-BR	Brown	SM-R2-N-BR
SM-R1-N-G	Green	SM-R2-N-G
SM-R1-N-GY	Gray	SM-R2-N-GY
SM-R1-N-OR	Orange	SM-R2-N-OR
SM-R1-N-P	Purple	SM-R2-N-P
SM-R1-N-R	Red	SM-R2-N-R
SM-R1-N-W	White	SM-R2-N-W
SM-R1-N-Y	Yellow	SM-R2-N-Y

SECURE MOUNT® CABLE END ASSEMBLIES

A Cable End Assembly includes: (1) Contact – Size of Your Choice, (1) Insulating Boot, (1) Boot Cap and (1) Boot Retention Ring

COLOR	313 CONTACT	444 CONTACT	535 CONTACT	646 CONTACT	777 CONTACT
Black	SM-SBA-3-BK	SM-SBA-4-BK	SM-SBA-5-BK	SM-SBA-6-BK	SM-SBA-7-BK
Blue	SM-SBA-3-BL	SM-SBA-4-BL	SM-SBA-5-BL	SM-SBA-6-BL	SM-SBA-7-BL
Brown	SM-SBA-3-BR	SM-SBA-4-BR	SM-SBA-5-BR	SM-SBA-6-BR	SM-SBA-7-BR
Green	SM-SBA-3-G	SM-SBA-4-G	SM-SBA-5-G	SM-SBA-6-G	SM-SBA-7-G
Gray	SM-SBA-3-GY	SM-SBA-4-GY	SM-SBA-5-GY	SM-SBA-6-GY	SM-SBA-7-GY
Orange	SM-SBA-3-OR	SM-SBA-4-OR	SM-SBA-5-OR	SM-SBA-6-OR	SM-SBA-7-OR
Purple	SM-SBA-3-P	SM-SBA-4-P	SM-SBA-5-P	SM-SBA-6-P	SM-SBA-7-P
Red	SM-SBA-3-R	SM-SBA-4-R	SM-SBA-5-R	SM-SBA-6-R	SM-SBA-7-R
White	SM-SBA-3-W	SM-SBA-4-W	SM-SBA-5-W	SM-SBA-6-W	SM-SBA-7-W
Yellow	SM-SBA-3-Y	SM-SBA-4-Y	SM-SBA-5-Y	SM-SBA-6-Y	SM-SBA-7-Y

SAFE STAB®

SAFE STAB® COMPLETE SET – SINGLE HOLE RECEPTACLE & CABLE END ASSEMBLIES

A Complete Set includes: (1) Single Hole Receptacle w/Gasket, Protective Cap and (2) Stainless Screws, (1) Lug - Size of your choice, (1) Insulating Boot w/Cap and Boot Retention Ring

COLOR	444 LUG	535 LUG	646 LUG	777 LUG
Black	SS-R1-4-BK	SS-R1-5-BK	SS-R1-6-BK	SS-R1-7-BK
Blue	SS-R1-4-BL	SS-R1-5-BL	SS-R1-6-BL	SS-R1-7-BL
Brown	SS-R1-4-BR	SS-R1-5-BR	SS-R1-6-BR	SS-R1-7-BR
Green	SS-R1-4-G	SS-R1-5-G	SS-R1-6-G	SS-R1-7-G
Gray	SS-R1-4-GY	SS-R1-5-GY	SS-R1-6-GY	SS-R1-7-GY
Orange	SS-R1-4-OR	SS-R1-5-OR	SS-R1-6-OR	SS-R1-7-OR
Purple	SS-R1-4-P	SS-R1-5-P	SS-R1-6-P	SS-R1-7-P
Red	SS-R1-4-R	SS-R1-5-R	SS-R1-6-R	SS-R1-7-R
White	SS-R1-4-W	SS-R1-5-W	SS-R1-6-W	SS-R1-7-W
Yellow	SS-R1-4-Y	SS-R1-5-Y	SS-R1-6-Y	SS-R1-7-Y

SAFE STAB® COMPLETE SET – DOUBLE HOLE RECEPTACLE & CABLE END ASSEMBLIES

A Complete Set includes: (1) Double Hole Receptacle w/Gasket, Protective Cap and (2) Stainless Screws, (1) Lug - Size of your choice, (1) Insulating Boot w/Cap and Boot Retention Ring

COLOR	444 LUG	535 LUG	646 LUG	777 LUG
Black	SS-R2-4-BK	SS-R2-5-BK	SS-R2-6-BK	SS-R2-7-BK
Blue	SS-R2-4-BL	SS-R2-5-BL	SS-R2-6-BL	SS-R2-7-BL
Brown	SS-R2-4-BR	SS-R2-5-BR	SS-R2-6-BR	SS-R2-7-BR
Green	SS-R2-4-G	SS-R2-5-G	SS-R2-6-G	SS-R2-7-G
Gray	SS-R2-4-GY	SS-R2-5-GY	SS-R2-6-GY	SS-R2-7-GY
Orange	SS-R2-4-OR	SS-R2-5-OR	SS-R2-6-OR	SS-R2-7-OR
Purple	SS-R2-4-P	SS-R2-5-P	SS-R2-6-P	SS-R2-7-P
Red	SS-R2-4-R	SS-R2-5-R	SS-R2-6-R	SS-R2-7-R
White	SS-R2-4-W	SS-R2-5-W	SS-R2-6-W	SS-R2-7-W
Yellow	SS-R2-4-Y	SS-R2-5-Y	SS-R2-6-Y	SS-R2-7-Y

SAFE STAB® RECEPTACLE

Each Single and Double Hole Receptacle includes:
(1) Safe Stab® Receptacle w/Gasket and Protective Cap

SINGLE HOLE	COLOR	DOUBLE HOLE
SS-R1-BK	Black	SS-R2-BK
SS-R1-BL	Blue	SS-R2-BL
SS-R1-BR	Brown	SS-R2-BR
SS-R1-G	Green	SS-R2-G
SS-R1-GY	Gray	SS-R2-GY
SS-R1-OR	Orange	SS-R2-OR
SS-R1-P	Purple	SS-R2-P
SS-R1-R	Red	SS-R2-R
SS-R1-W	White	SS-R2-W
SS-R1-Y	Yellow	SS-R2-Y

SAFE STAB® CABLE END ASSEMBLIES

A Cable End Assembly includes: (1) Lug - Size of your choice, (2) Stainless Screws, (1) Insulating Boot, (1) Boot Cap and (1) Boot Retention Ring

COLOR	444 LUG	535 LUG	646 LUG	777 LUG
Black	SS-SBA-4-BK	SS-SBA-5-BK	SS-SBA-6-BK	SS-SBA-7-BK
Blue	SS-SBA-4-BL	SS-SBA-5-BL	SS-SBA-6-BL	SS-SBA-7-BL
Brown	SS-SBA-4-BR	SS-SBA-5-BR	SS-SBA-6-BR	SS-SBA-7-BR
Green	SS-SBA-4-G	SS-SBA-5-G	SS-SBA-6-G	SS-SBA-7-G
Gray	SS-SBA-4-GY	SS-SBA-5-GY	SS-SBA-6-GY	SS-SBA-7-GY
Orange	SS-SBA-4-OR	SS-SBA-5-OR	SS-SBA-6-OR	SS-SBA-7-OR
Purple	SS-SBA-4-P	SS-SBA-5-P	SS-SBA-6-P	SS-SBA-7-P
Red	SS-SBA-4-R	SS-SBA-5-R	SS-SBA-6-R	SS-SBA-7-R
White	SS-SBA-4-W	SS-SBA-5-W	SS-SBA-6-W	SS-SBA-7-W
Yellow	SS-SBA-4-Y	SS-SBA-5-Y	SS-SBA-6-Y	SS-SBA-7-Y

CONNECTORS

SECURE MOUNT® & STAB SERIES

ACCESSORIES

QUICK STAB® RECEPTACLES		
PART NO.	DESCRIPTION	COLOR
QS-R2-BK	Quick Stab® Receptacle w/Gasket	Black
QS-R2-BL	Quick Stab® Receptacle w/Gasket	Blue
QS-R2-BR	Quick Stab® Receptacle w/Gasket	Brown
QS-R2-G	Quick Stab® Receptacle w/Gasket	Green
QS-R2-GY	Quick Stab® Receptacle w/Gasket	Gray
QS-R2-OR	Quick Stab® Receptacle w/Gasket	Orange
QS-R2-P	Quick Stab® Receptacle w/Gasket	Purple
QS-R2-R	Quick Stab® Receptacle w/Gasket	Red
QS-R2-W	Quick Stab® Receptacle w/Gasket	White
QS-R2-Y	Quick Stab® Receptacle w/Gasket	Yellow

QUAD STAB RECEPTACLES		
PART NO.	DESCRIPTION	COLOR
QS-R4-BK	Quad Stab Buss Bar Receptacle	Black
QS-R4-R	Quad Stab Buss Bar Receptacle	Red
QS-R4-W	Quad Stab Buss Bar Receptacle	White
QS-R4-PFB-BK	Quad Stab Parallel Front/Back Receptacle	Black
QS-R4-PFB-R	Quad Stab Parallel Front/Back Receptacle	Red
QS-R4-PFB-W	Quad Stab Parallel Front/Back Receptacle	White
QS-R4-HF-VB-BK	Quad Stab Horizontal Front/Vertical Back Receptacle	Black
QS-R4-HF-VB-R	Quad Stab Horizontal Front/Vertical Back Receptacle	Red
QS-R4-HF-VB-W	Quad Stab Horizontal Front/Vertical Back Receptacle	White
QS-R4-VF-HB-BK	Quad Stab Vertical Front/Horizontal Back Receptacle	Black
QS-R4-VF-HB-R	Quad Stab Vertical Front/Horizontal Back Receptacle	Red
QS-R4-VF-HB-W	Quad Stab Vertical Front/Horizontal Back Receptacle	White

Note: mounting gasket included.

SECURE MOUNT® & SAFE STAB® INSULATING BOOTS		
COLOR	INSULATING BOOT WITH BOOT CAP	INSULATING BOOT WITHOUT BOOT CAP
Black	SM-B-BK	SM-BNC-BK
Blue	SM-B-BL	SM-BNC-BL
Brown	SM-B-BR	SM-BNC-BR
Green	SM-B-G	SM-BNC-G
Gray	SM-B-GY	SM-BNC-GY
Orange	SM-B-OR	SM-BNC-OR
Purple	SM-B-P	SM-BNC-P
Red	SM-B-R	SM-BNC-R
White	SM-B-W	SM-BNC-W
Yellow	SM-B-Y	SM-BNC-Y

Secure Mount® Field Installation/Repair Kit

Applications

This kit is designed to allow quick and easy field replacement of a PD-501 style connector with a Secure Mount® connector. The Kit contains enough supplies to field mount five Secure Mounts in an existing panel. The kit can also be used for field mounting of the Safe Stab®, Quick Stab® and Quad Stab receptacles.

Features

- No replacement of insulating board is required, even damaged boards can be saved
- No need to remove adjacent undamaged connectors from insulation board
- Save cost, labor and downtime when field repairs are necessary

KIT CONTENTS

Kit contains parts to field mount five Secure Mount® Receptacles.

1. Five Tapered wooden plugs
2. One 3 and 3/4 inch diameter carbide tipped hole saw
3. Twenty sets of mounting bolts
4. Five adhesive drilling templates
5. Complete instructions



PART #	PART DESCRIPTION	PACK SIZE
SM-FRK	Secure Mount® Field Installation/Repair Kit	1

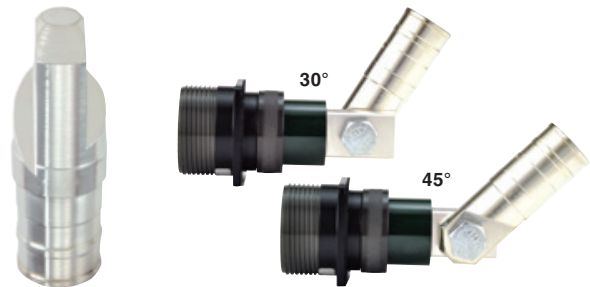


CABLE SIZE	SAFE STAB® LUGS W/ STAINLESS SCREWS	
	LUGS WITHOUT BOOT RETENTION RING	LUGS WITH BOOT RETENTION RING
535 MCM	SS-SC-535	SS-SC-535-R
Through	SS-SC-646	SS-SC-646-R
777 MCM	SS-SC-777	SS-SC-777-R

SECURE MOUNT® CONTACTS		
CABLE SIZE	CONTACTS WITHOUT BOOT RETENTION RING	CONTACT WITH BOOT RETENTION RING
	313 MCM	SM-SC-313
Through	SM-SC-444	SM-SC-444-R
777 MCM	SM-SC-535	SM-SC-535-R
	SM-SC-646	SM-SC-646-R
	SM-SC-777	SM-SC-777-R



QUICK STAB® & QUAD STAB DOUBLE HOLE LUGS	
PART NO.	DESCRIPTION
QS-535-L	Quick Stab® & Quad Stab 535 Lug
QS-646-L	Quick Stab® & Quad Stab 646 Lug
QS-777-L	Quick Stab® & Quad Stab 777 Lug



30° – 45° Reversible Locking Buss Bar Lug

The 30° or 45° Reversible Buss Bar Lug was created by RigPower to help eliminate the long bend radius that is inherent when using standard single or double hole crimp lugs. Compared to current single hole lugs, the Reversible Buss Bar Lug gives you mounting options no one else can. The lug's shoulder rests securely on the buss bar, preventing any rotation that may be caused from the weight of the cable tension or from equipment vibration. Reducing the bend radius provides for additional work space behind the SCR house panel and other panel mounted areas.

- Termination method is double crimp style
- Crimping locators are designed into the base for ease of installation
- Uses the same crimping die sets as the RigPower RMP®II, Secure Mount®, Safe Stab®, MCC-1, VFD-1®, HP20 and MC20 series connectors
- Made from Duplex Sn plated high conductivity copper

30°—45° REVERSIBLE LOCKING BUSS BAR LUG	
PART NO.	DESCRIPTION
SL-535-AL	535 MCM 30°/45° Angled Lug for Buss Bar Connections
SL-646-AL	646 MCM 30°/45° Angled Lug for Buss Bar Connections
SL-777-AL	777 MCM 30°/45° Angled Lug for Buss Bar Connections

2.778

The "Secure Mount® & Stab" Series:

- The Industry Standard For High-Amperage Power Connectors
- Secure Mount® & Stab Receptacles Provide Superior Product Design Features

0.750

Single Pole High-Amperage Connectors for Use on Land-Based and Off-Shore Oil Drilling Rigs and Other High-Amperage Power Generation Applications
For Use With Single Conductor Cables 313 MCM to 777 MCM

2.25

If You Want The Very Best Single Pole Electrical Connectors
Demand Genuine RigPower Electrical Parts

Look for these other fine products from RigPower:

The RMP® II Series, VFD-1® Series, MCC-1™ Series, HP20™ Series,
MC20™ Series and The Phase-Lock® Sequential Locking System

1.203

0.825



CLAMP NU

1.5" ACROSS FLAT

HKMC-RPSMSS 06-15



4140 World Houston Parkway, Houston, TX 77032 USA
TEL: (281) 445-7400 / FAX: (281) 445-7404
www.rigpower.com

