

100 Common Species Caught by Indonesian Fisheries Targeting Snappers, Groupers and Emperors

YKAN Technical Report

Peter J. Mous, Wawan B. IGede, Jos S. Pet

June 27, 2022



Suggested citation

Peter J. Mous, Wawan B. I Gede, and Jos S. Pet (2021). 100 Common species caught by Indonesian fisheries targeting snappers, groupers and emperors. Yayasan Konservasi Alam Nusantara and People and Nature Consulting, Jakarta Indonesia. Report AR_FISHID_170621

Abstract

This document features pictures, categorized by taxonomic family, of the 100 most common species found in the deepwater demersal fisheries targeting snappers in Indonesia. The pictures are taken by fishers participating in YKAN's Crew-Operated Data Recording system, featuring a measuring board in the background.

Yayasan Konservasi Alam Nusantara

Iklat Plaza Building - Blok L

Jalan By Pass Ngurah Rai No.505, Pemogan, Denpasar Selatan

Kota Denpasar 80221

Bali, Indonesia

Ph. +62-361-244524

People and Nature Consulting International

Jalan Tukad Pancoran 15X, Panjer, Denpasar Selatan

Kota Denpasar 80225

Bali, Indonesia

TABLE OF CONTENTS

CHAPTER 1 : INTRODUCTION.....	4
CHAPTER 2 : LUTJANIDAE.....	6
CHAPTER 3 : EPINEPHELIDAE.....	15
CHAPTER 4 : LETHRINIDAE.....	22
CHAPTER 5 : CARANGIDAE.....	25
CHAPTER 6 : EMMELICHTHYIDAE.....	29
CHAPTER 7 : SPARIDAE.....	30
CHAPTER 8 : GLAUCOSOMATIDAE.....	31
CHAPTER 9 : HAEMULIDAE.....	32
CHAPTER 10 : PRIACANTHIDAE.....	33
CHAPTER 11 : SPHYRAENIDAE.....	34
CHAPTER 12 : NEMIPTERIDAE.....	35
CHAPTER 13 : HOLOCENTRIDAE.....	36
CHAPTER 14 : RACHYCENTRIDAE.....	37
CHAPTER 15 : SCIAENIDAE.....	38
REFERENCES.....	39

CHAPTER 1 : INTRODUCTION

This guide lists the 100 most common species in the deep-slope dropline and demersal longline catches in central and eastern Indonesia. This fishery operates in waters of 50-500 m depth, on the deeper parts of continental shelves and on deep slopes around canyons, sea mounts and continental shelf edges. The dropline and demersal longline fisheries are usually referred to as “snapper” fisheries, even though these fisheries target groupers (Epinephelidae) and emperors (Lethrinidae) as well as snappers (Lutjanidae). Several other families of valuable species are also common in the catch.

Even though the bulk of the deepwater dropline and longline landings consist of fish species typical for deeper waters, catches may include smaller, but not insignificant batches of species that usually inhabit shallower waters. This includes species that use shallower water as juveniles and/or sub-adults, after which they migrate to deeper water. It also includes species that use both shallow and deep water as adults and/or juveniles. Some of these species are common in the catch of the deep-slope fisheries, and if so they are included in this guide.

The 100 species in this guide cover more than 99% of the total catch in numbers of fish. This has been established from taxonomic analysis of a total sample of more than 250,000 fish that were caught and photographed by dropline and longline fishers between 2014 and 2017. Less than 1% of the catch in numbers of fish consists of species other than the top 100 in this guide. This includes various species of sharks and rays, as well as other bottom fish and even some pelagic species that are caught as by-catch in these fisheries.

All photographs are from our Crew-Operated Data Recording System (CODRS), where crews of fishing vessels photograph each fish caught with a measuring board as background, usually directly after capture or at least on the same day. Hence, these pictures show accurate coloration as seen in the field on fresh fish, in contrast to colors of fish photographed at fish markets, which have usually faded. Because this guide focuses on catches of deepwater fisheries, which usually catches the higher end of the size range, we selected pictures of adults rather than juveniles. Since for some species coloration depends on the depth it inhabits, and since most of the fish shown in this guide were caught in deep waters, the coloration shown in this guide may differ from other depictions of the same species.

Scientific names are provided for all species as well as some English, Indonesian and other common names. We provided common names even though their use must be avoided: Common names can never be used to accurately refer to any one species, and there are few fish species that can accurately be described by one common name. Especially in species-diverse fisheries, a single common name is used for various species, resulting in confusion in the trade and even in scientific publications. Also, various common names may be used (usually in different areas) for the same species, leading to further confusion. Hence, it is safest to always use the scientific name.

In Indonesia, fishers frequently make up their own names to distinguish between fish species, especially when species are new to them. Instead of Indonesian names, Indonesian fishers and traders sometimes use the names that are common at the export destination; *Plectropomus areoloatus*, for example, is often referred to as “sai sing” (its Chinese name, which is specific to that species) as well as “ikan sunu” (its Indonesian name, which is also used for other *Plectropomus* species).

In addition to field guides, we used taxonomic keys to ensure high accuracy in species identification. Furthermore, we established a reference collection of all species in freezers at The Nature Conservancy Fisheries Station in Bali. Useful sources covering species that are common in the deep-slope “snapper” fisheries are: (1) "North Coast fish identification guide" by Rome and Newman (2010), with pictures of fishes from the North Coast Bioregion of Australia, description of distinguishing features, and indication on maximum sizes; (2) “Market fishes of Indonesia” (White et al., 2013), which includes most commercial fishes found in Indonesia; (3) “Fish species identification manual for deep-bottom snapper fishermen” (Chapman et al., 2008); (4) "Deep-bottom fish identification cards for small-scale fishermen" (SPC, 2013); (5) "Marine fishes of South-East Asia" (Allen, 2000), (6) the "Australian seafood handbook" (Andrew et al., 2001), and (7) the FAO Species Catalogues (Allen, 1985; Heemstra & Randall, 1993). Useful on-line resources include www.fishbase.org, which is comprehensive, and www.fishesofaustralia.net.au, which has good pictures. None of these resources, however, can serve as a complete guide for the species in the deep-slope fisheries, and most contain species from other fisheries as well.

CHAPTER 2 : LUTJANIDAE

1. *Aphareus rutilans*

Rusty Jobfish,
Lehi

Kurisi Perak, Ikan
Tajuk, Tariansan



2. *Aprion virescens*

Green Jobfish,
Uku

Guntur,
Kurisi Hijau



3. *Etelis carbunculus*

Ruby Snapper,
Ehu

Bagong,
Saramia



4. *Etelis boweni*

Giant Ruby Snapper,
Ehu

Bagong, Kakap
Pasifik, Saramia



**5. *Etelis
radius***

Pale Snapper

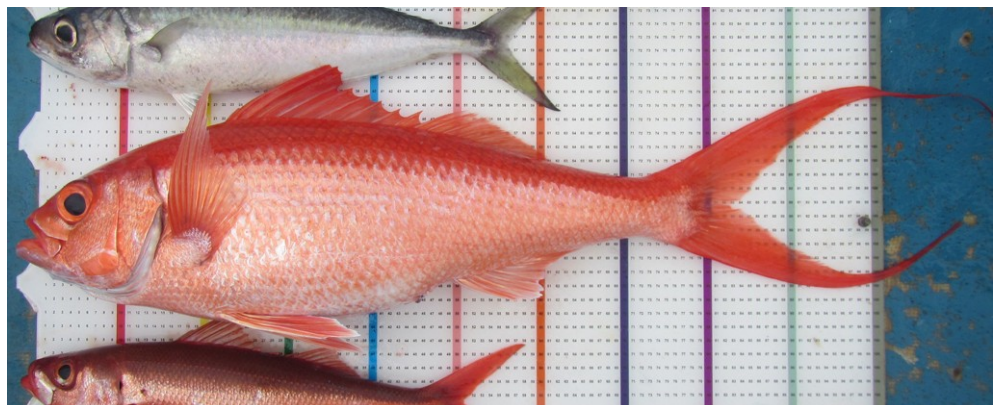
Perak Merah, Kerisi,
Palo-palo



**6. *Etelis
coruscans***

Flame Snapper,
Onaga

Anggoli, Ekor
Panjang, Rahiang



**7. *Pristipomoides
multidens***

Goldband Snapper,
Goldband Jobfish

Anggoli Putih,
Kerisi, Kurisi



**8. *Pristipomoides
typus***

Sharptooth Jobfish,
Red-Tailed
Opakapaka

Anggoli Merah,
Kurisi Bali, Kerisi



9. *Pristipomoides filamentosus*

Crimson Jobfish,
Opakapaka

Kurisi Bali,
Tola, Opaka



10. *Pristipomoides sieboldii*

Lavender Jobfish,
Kalekale

Kerisi,
Kurisi



11. *Pristipomoides argyrogrammicus*

Ornate Jobfish,
Ornate Snapper

Kurisi



12. *Pristipomoides zonatus*

Oblique-banded
Snapper

Kakap Bendera



**13. *Pristipomoides
flavipinnis***

Golden Eye Snapper,
Golden Eye Jobfish

Kurisi,
Kale-kale



**14. *Lutjanus
bitaeniatus***

Indonesian Snapper

Kakap Merah



**15. *Lutjanus
argentimaculatus***

Mangrove Snapper,
Mangrove Jack

Ganggrang Eca,
Jarang Gigi, Manggar



**16. *Lutjanus
bohar***

Red Bass

Jarang Gigi, Kantoan,
Kakap Batu, Ahang



17. *Lutjanus malabaricus*

Malabar Snapper,
Large Mouth
Nannygai

Kakap Merah, Kakap
Asli, Bambang



18. *Lutjanus sebae*

Red emperor

Kakap Bongkok,
Kakap Sawu



19. *Lutjanus timorensis*

Timor Snapper

Bambang,
Kakap Timor



20. *Lutjanus gibbus*

Paddletail Snapper,
Humpback Snapper

Cunding,
Jenaha



21. *Lutjanus erythropterus*

Crimson Snapper,
Small Mouth
Nannygai

Bambangan, Nunuk,
Kakap Sawu



22. *Pinjalo lewisi*

Slender Pinjalo,
Red Pinjalo

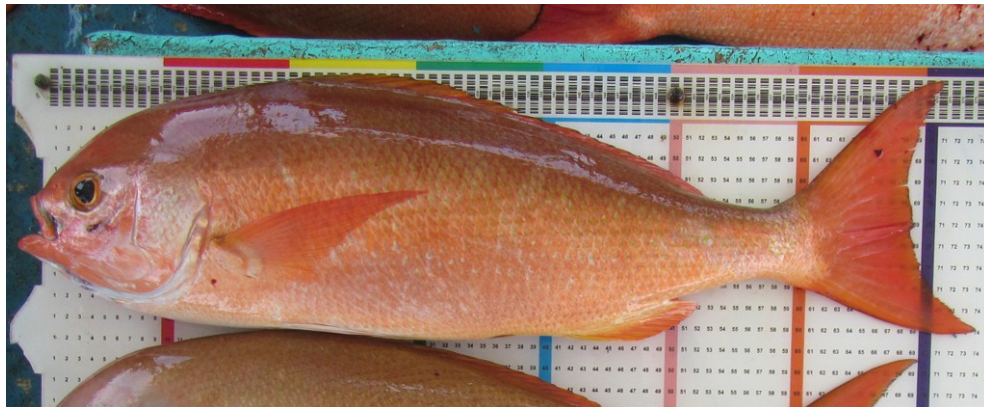
Kakap Merah,
Nunuk



23. *Pinjalo pinjalo*

Pinjalo Snapper

Nunuk Jumbo,
Ikan Sulit Merah



24. *Lutjanus johnii*

Golden snapper,
Fingermark Perch

Kakap Jenaha



25. *Lutjanus russelli*

Russell's Snapper,
Moses Perch

Tompel, Jangki
Tompel, Gorora



26. *Lutjanus lemniscatus*

Darktail Snapper,
Maroon Seaperch

Jarang gigi, Cablikan,
Bulobulo Pura



27. *Lutjanus vitta*

Brownstripe
Snapper, Hussar

Mala, Ikan Pisang,
Kuniran



28. *Lutjanus boutton*

Moluccan Snapper,
Goldenlined Snapper

Badur,
Kakap



29. *Lutjanus rivulatus*

Maori Snapper,
Speckled Snapper

Kampuh, Kampo,
Gaga, Jenaha Konai



30. *Lipocheilus carnolabrum*

Tang's snapper

Padi-padi Kuning



31. *Symphorus nematophorus*

Chinaman Fish

Kakap China,
Markisa, Mamong,
Marpisang



32. *Paracaesio gonzalesi*

Vanuatu Snapper

Balimong Bencong,
Ekor Kuning, Lololi,
Lolosi



33. *Paracaesio xanthura*

Yellowtail Blue
Snapper, False
Fusilier

Balimong Sulir,
Lololi, Lolosi



34. *Paracaesio kusakarii*

Saddleback Snapper

Balimong, Ikan
Sulir, Pisang-pisang,
Lolosi



35. *Paracaesio stonei*

Cocoa Snapper,
Stone's Snapper

Balimong Mata
Besar, Ikan Sulir,
Lolosi



CHAPTER 3 : EPINEPHELIDAE

**36. *Saloptia
powelli***

Golden Grouper

Kerapu Orange



**37. *Cephalopholis
miniata***

Red Coral Hind,
Red Coral Cod

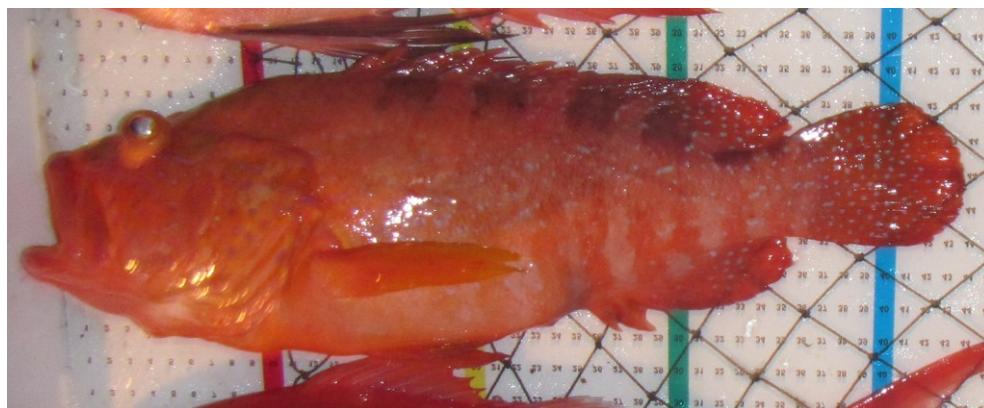
Kerapu,
Kerapu Merah



**38. *Cephalopholis
sexmaculata***

Six-blotch Hind,
Six-blotch Rockcod

Kerapu Merah



**39. *Cephalopholis
sonnerati***

Tomato Grouper,
Tomato Cod

Kerapu Tomat,
Angpang,
Kwaci merah



**40. *Cephalopholis
igarashiensis***

Garish Grouper,
Goldband Grouper

Kerapu,
Kerapu Api



**41. *Epinephelus
latifasciatus***

Striped Grouper,
Banded Grouper

Kerapu, Kerapu
Lumpur, Tho Khui



**42. *Epinephelus
radiatus***

Radiant Rockcod,
Oblique-banded
Grouper

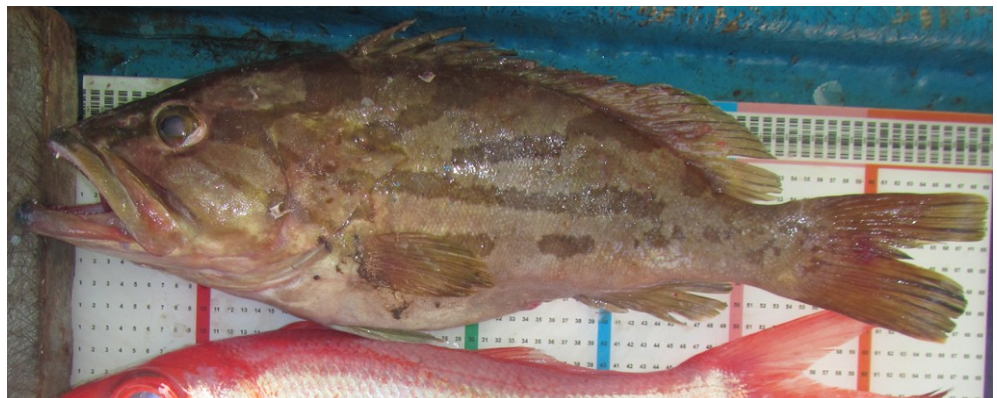
Kerapu Minyak,
Yau Pan



**43. *Epinephelus
morrhua***

Comet Grouper

Kerapu Minyak,
Yau Pan



44. *Epinephelus poecilonotus*

Dot-dash Grouper,
Dot-dash Rockcod

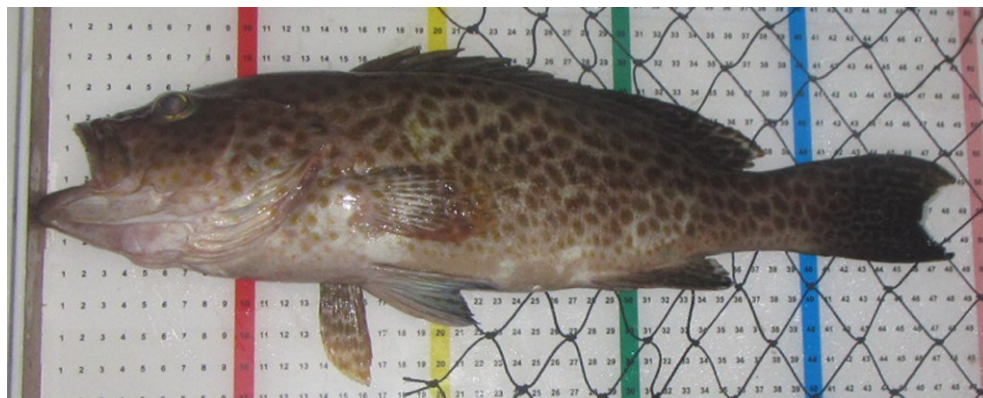
Kerapu,
Kerapu Minyak



45. *Epinephelus areolatus*

Areolate Grouper,
Squaretail Rockcod

Kerapu Macan,
Gerape Bandi,
Pek Be Kui



46. *Epinephelus bleekeri*

Duskytail Grouper

Kerapu,
Babunjai



47. *Epinephelus miliaris*

Netfin Grouper

Kerapu,
Kerapu Minyak



48. *Epinephelus bilobatus*

Frostback Cod

Kerapu,
Kerapu Minyak



49. *Epinephelus malabaricus*

Malabar Grouper

Kerapu Lumpur,
Kerapu Tutul,
Ciok Pan



50. *Epinephelus coioides*

Orange-spotted
Grouper, Estuary
Cod

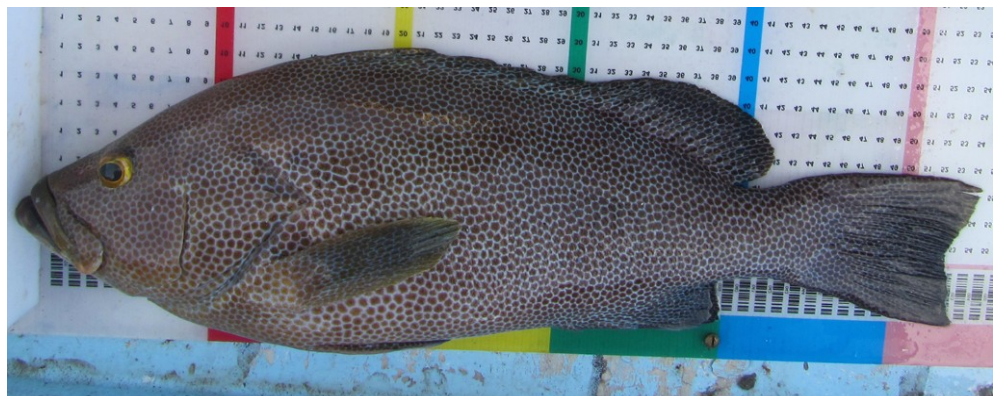
Kerapu Tutul,
Geurape Kuneng



51. *Epinephelus chlorostigma*

Brownspotted
Grouper

Kerapu Minyak,
Yau Pan



**52. *Epinephelus
retouti***

Red-tipped Grouper,
Brownback Cod

Kerapu,
Kerapu Minyak



**53. *Epinephelus
heniochus***

Bridled Grouper

Kerapu, Kerapu
Karet, Kerapu Minyak



**54. *Epinephelus
stictus***

Blackdotted Grouper

Kerapu Lumpur,
Kerapu Bendera



**55. *Epinephelus
epistictus***

Dotted Grouper,
Black-Dotted Grouper

Kerapu, Kerapu Pulut,
Kerong-kerong



**56. *Epinephelus
multinotatus***

White-blotched
Grouper, Rankin Cod

Kerapu,
Kerapu Karet



**57. *Epinephelus
undulosus***

Wavy-lined Grouper,
Brown-lined Reef Cod

Kerapu Totol



**58. *Epinephelus
amblycephalus***

Banded Grouper

Kerapu Lumpur,
Kerapu Bendera



**59. *Hyporthodus
octofasciatus***

Eightbar Grouper
Eight-banded
Rockcod

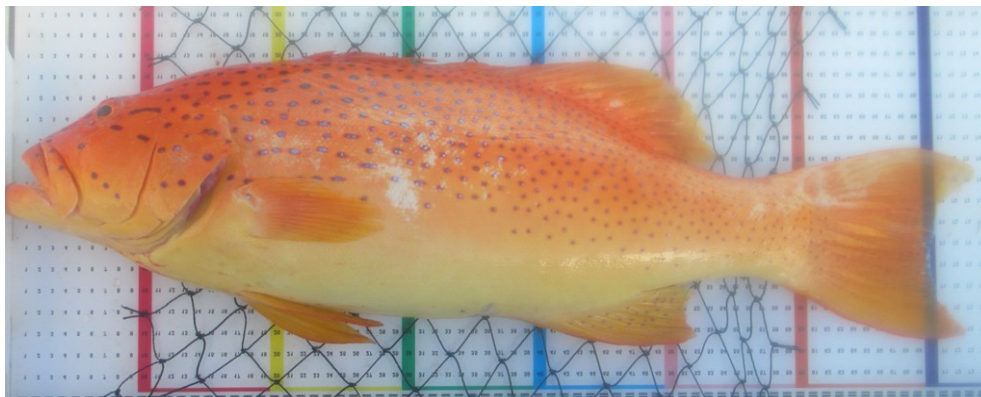
Kerapu,
Otang



60. *Plectropomus maculatus*

Bar-cheeked Coral Trout

Sunu Kasar, Kerapu Lodi, Tai Sing



61. *Plectropomus leopardus*

Leopard Coral Trout

Sunu Merah, Sunu Halus, Tung Sing



62. *Variola albimarginata*

Lyretail Grouper

Ekor Gunting, Ekor Bulan



CHAPTER 4 : LETHRINIDAE

63. *Lethrinus lentjan*

Pinkear Emperor,
Redspot Emperor

Lencam, Tambak
Pasir, Jangki



64. *Lethrinus laticaudis*

Grass Emperor,
Blue-lined Emperor

Ketambak,
Lencam



65. *Lethrinus nebulosus*

Spangled Emperor,
Spangled Sweetlip

Tambak Pasir,
Ketambak, Lencam



66. *Lethrinus olivaceus*

Longnosed
Emperor, Longfaced
Emperor

Tambak Moncong,
Lencam, Ketambak



**67. *Lethrinus
amboinensis***

Ambon Emperor

Ketambak, Lencam,
Jangki



**68. *Lethrinus
rubrioperculatus***

Spotcheek Emperor,
Spot Cheek Bream

Lencam, Ketambak,
Bulan-bulan



**69. *Wattsia
mossambica***

Mozambique Large-
eye Bream

Padi-padi Hitam,
Padi-padi Duri



**70. *Gymnocranius
grandoculis***

Blue-lined Large-
eye Bream,
Blue-lined Emperor

Padi-padi Putih,
Tambak Pasir



**71. *Gymnocranius
griseus***

Grey Large-eye
Bream

Padi-padi Putih,
Tambak Pasir



CHAPTER 5 : CARANGIDAE

72. *Carangoides coeruleopinnatus*

Coastal Trevally,
Onion Trevally

Kwe



73. *Carangoides fulvoguttatus*

Yellowspotted
Trevally, Goldspotted
Trevally

Kwe Macan



74. *Carangoides malabaricus*

Malabar Trevally

Kwe



75. *Carangoides chrysophrys*

Longnose Trevally,
Tea Leaf Trevally

Kwe



**76. *Carangoides
gymnostethus***

Bludger Trevally

Tangkolak,
Kwe Lilin



**77. *Caranx
bucculentus***

Blue Spotted Trevally
Wide Mouth Trevally

Cakal, Bubara, Kwe,
Bengkolo, Cepak



**78. *Caranx
ignobilis***

Giant Trevally

Cakal, Bubara, Kwe,
Bengkolo



**79. *Caranx
lugubris***

Black Trevally,
Black Jack

Cakal, Tengkolok,
Bengkolo Hitam, Kwe



80. *Caranx sexfasciatus*

Bigeye Trevally

Cakal, Bengkolo,
Kwe Gorong, Bubara



81. *Caranx tille*

Tille Trevally,
Tille Kingfish

Bubara, Kwe Lilin,
Bengkolo Putih



82. *Elagatis bipinnulata*

Rainbow Runner,
Hawaiian Salmon

Selayang, Cumok,
Salem, Sunilir



83. *Seriola dumerili*

Amberjack

Cakal Kanang,
Kwe Batu Besar



**84. *Seriola*
*rivoliana***

Almaco Jack

Cakal Kanang,
Kwe Batu



CHAPTER 6 : EMMELICHTHYIDAE

85. *Erythrocles schlegelii*

Japanese Rubyfish

Trompet,
Kurisi Jepang



CHAPTER 7 : SPARIDAE

86. *Argyrops spinifer*

Taiwan Soldier
Bream, King Soldier
Bream

Bawal, Ciacang,
Ikan Piring-piring



87. *Dentex carpenteri*

Yellowback Bream,
Deep Sea Snapper

Ciacang,
Ikan Piring-piring



CHAPTER 8 : GLAUCOSOMATIDAE

88. *Glaucosoma buergeri*

Northern Pearl
Perch, Deepsea
Jewfish

Ikan Cinculu



CHAPTER 9 : HAEMULIDAE

89. *Diagramma labiosum*

Slate Sweetlip,
Slate Bream

Kaci-kaci,
Raja Bau, Kaneke



90. *Diagramma pictum*

Painted Sweetlip,
Trout Sweetlip

Kaci-kaci,
Raja Bau, Kaneke



91. *Pomadasys kaakan*

Barred Javelin,
Javelin Grunter

Kerong-kerong,
Ikan Ronga



CHAPTER 10 : PRIACANTHIDAE

92. *Cookeolus japonicus*

Long-finned
Bullseye,
Deepwater Bullseye

Mangla, Ikan Bulan,
Ikan Mata Besar



CHAPTER 11 : SPHYRAENIDAE

93. *Sphyraena barracuda*

Greater Barracuda

Pengaluan, Lengko,
Langsar, Alu-alu



94. *Sphyraena forsteri*

Bigeye Barracuda

Pengaluan, Lengko,
Langsar, Alu-alu



95. *Sphyraena putnamae*

Sawtooth Barracuda,
Military Barracuda

Pengaluan, Lengko,
Langsar, Alu-alu



CHAPTER 12 : NEMIPTERIDAE

96. *Parascolopsis erionna*

Rosy Dwarf Monocle
Bream

Kumeje Batu,
Kerisi



CHAPTER 13 : HOLOCENTRIDAE

97. *Ostichthys japonicus*

Japanese Soldierfish,
Giant Squirrelfish

Sisik Batu



CHAPTER 14 : RACHYCENTRIDAE

98. *Rachycentron canadum*

Cobia,
Black Kingfish

Badee,
Gabus Laut



CHAPTER 15 : SCIAENIDAE

99. *Protonibea diacanthus*

Black Jewfish,
Northern Mulloway

Angkui,
Kakap Cina,
Gulama Cina



100. *Atrobuca brevis*

Orange croaker

Gulama Korea



REFERENCES

Allen, G. (2000). Marine fishes of South-East Asia. A field guide for anglers and divers. Periplus Editions (HK) Ltd.

Allen, G. R. (1985). FAO species catalogue. Vol. 6. Snappers of the world. An annotated and illustrated catalogue of lutjanid species known to date. FAO Fish.Synop., (125) Vol.6:208 p. Food and Agricultural Organization (FAO), Rome.

Andrew, J., R. K. Daley, N. G. Elliott, P. R. Last, B. D. Mooney, P. D. Nichols, N. V. Ruello, P. Virtue, R. D. Ward, and G. K. Yearsley (2001). Australian seafood handbook. CSIRO Marine Research and Fisheries Research & Development Corporation, Australia.

Chapman, L., A. Desurmont, Y. Choi, P. Boblin, W. Sokimi, and S. Beverly (2008). Fish species identification manual for deep-bottom snapper fishermen. Technical report, Secretariat of the Pacific Community, Noumea, New Caledonia. 163 p.

Heemstra, P. C. and J. E. Randall (1993). FAO species catalogue. Vol. 16. Groupers of the world (Family Serranidae, Subfamily Epinephelinae). An annotated and illustrated catalogue of the grouper, rockcod, hind, coral grouper and lyretail species known to date. Food and Agricultural Organization (FAO), Rome.

Rome, B. M. and S. J. Newman (2010). North Coast fish identification guide. Technical report, Department of Fisheries, Perth, Western Australia.

Secretariat of the Pacific Community (2013). Deep-bottom fish identification cards for small-scale fishermen. Technical report, Secretariat of the Pacific Community, Noumea, New Caledonia.

White, W. T., P. R. Last, Dharmadi, R. Faizah, U. Chodrijah, B. I. Prisantoso, J. J. Pogonoski, M. Puckridge, and S. J. M. Blaber (2013). Market Fishes Of Indonesia. Australian Centre for International Agricultural Research, Canberra, Australia.