

+ + + + + + +

+  | Dorfmüller

+ **STANDARD FASTENERS**
AND HIGH-PRECISION
PARTS

+ + + + + + +



PRECISION CONNECTS

May we present? Dorfmüller!

Precision connects: This is the guiding principle that describes us and at the same time defines our products, proven by our customers with years of loyalty. They know us as **a manufacturer and distributor of CNC turned and milled parts**, offering reliable quality and service, especially in large dimensions. Big or small, thick or thin, long or short – made of steel or other special materials: We can fix anything for you.

Since 1884 we have been gaining experience and know-how daily, and thanks to constant modernizations and investments we stand well-positioned in the 21st century and remain future-focused for times to come.

Our sales team provides **technically adept** advice and plans with knowledge and understanding. Our technology is as modern as it is reliable, and suitable processes are digitalized and automated. Our well-trained employees operate a finely tuned manufacturing system that meets high quality standards and can also respond to change requests at short notice.

Visit us in our headquarters in Remscheid, get to know us and see for yourself how reliably our precision connects.



Uncountable materials, sizes and thread types possible!

We produce up to:
800 mm outer diameter
1500 mm length
1000 kg weight



MOST WANTED STANDARD PARTS – ALSO INDIVIDUALIZED



This selection of our most popular candidates from daily production represents just a small sample of our capabilities:

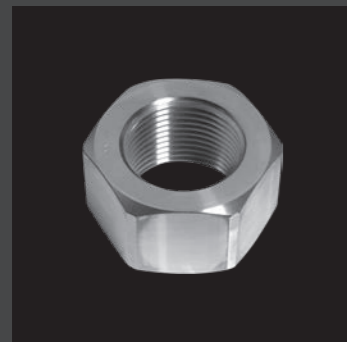
Standard parts? With a special request? With pleasure, as this is one of our core competences! We supply you with individual standard parts in your desired quantity.

We manufacture and trade: **We supply hexagon nuts, cap nuts, castle nuts, cross hole nuts, domed cap nuts, locknuts, slotted nuts, self-locking nuts, lockable nuts according to DIN/ISO standard.**

However, we only really demonstrate our skills when things get special.

With great competence in manufacturing and procurement, we provide solutions.

True to our motto „**The more exceptional, the better**“, we are pleased to supply you with any standard part, adapted to your individual requirements if required.



Hexagon nut

DIN 934, ISO 4032, ISO 8675, DIN 439, DIN 936



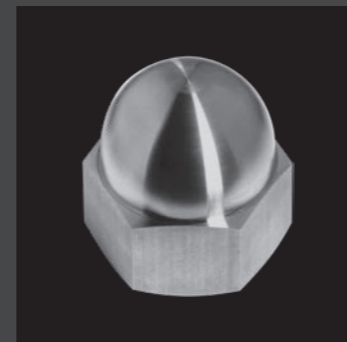
Cap nut

DIN 2510 AF, AFO, BF



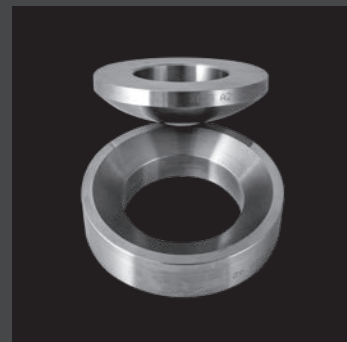
Cross hole nut

Round nut



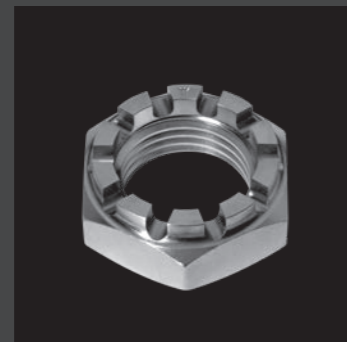
Domed cap nut

DIN 917, DIN 1587



Spherical washer / Conical seat

DIN 6319



Castle nut

DIN 935, DIN 937, DIN 979



Locknut

DIN 981, DIN 1804, DIN 70852, Typ GUA/GUK/GUP



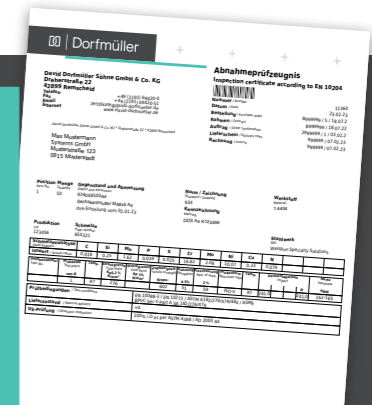
Locknut

KMT(A), DRS, STM-R, DRA, DLOCK

Know-how, experience and state-of-the-art technology enable us to supply you with almost any standard nut.

Possibilities of individualization:

- + regular or fine thread
- + right or left hand thread
- + metric, trapezoidal, inch thread
- + dimensional changes e.g. shortening of nuts
- + many different materials
- + special coatings
- + inspection certificates 3.1 & 3.2
- + batches 100% traceable
- + your logo or QR code on the workpiece



And best yet?

We are able to **deliver** long-lasting products such as ISO 4032, DIN 981 or 1804, as well as locknuts, slotted nuts and many others **extremely quickly: within only 3-4 days.**



VERY SPECIAL YOUR SPECIAL PARTS – OUR SPECIALTY



Uncountable materials, sizes and thread types possible!

We produce up to:

- 800 mm outer diameter
- 1500 mm length
- 1000 kg weight

– OUR SPECIALTY

Does your wish not comply with the standard?
Your special parts are our specialty.

Special applications require special parts. No matter whether for **the energy sector** such as **wind power, for special machinery and apparatus engineering, railroad technology or others** – we manufacture according to your requirements in **highest industrial quality**.

With our know-how as well as our reliable supplier network we are able to realize **your individual special requests**.

Our ultra-modern machinery covers a wide production range in turning and milling and the possibility to realize **different series sizes starting from one piece**. We are happy to advise you on the implementation, because our service makes the difference.



Possibilities of individualization:

As a rule of thumb for drawing parts, we prefer to manufacture ring-shaped parts with internal threads from a diameter of 40 mm to approx. 800 mm.

If the parts are smaller, they should be made of special materials (e.g. stainless, heat-resistant, cryogenic or with special tempering) or have other special features such as high accuracy requirements, coatings or acceptance requirements.

However, exceptions confirm the rule here.

∅
40 mm
–
800 mm

WE GOT THE HANG OF IT – RIGHT FROM THE START



Planning and development

are our top priority. If you have not yet found the right connection technology for your project or need a suitable drawing file, no problem. We are happy to advise and support you on the way to the right solution.

Production and deadlines

are closely linked in our manufacturing and coordinated with you. Small series in a short time, large series on recurring dates, framework agreements with longer terms or individual solutions within economic specifications – we know what to do.

Optimal results

require the best planning. That's why we leave nothing to chance and focus everything on control and quality assurance. You get the product that you need and that delivers what it promises – **with an inspection certificate or dimensional report** if desired.

Dorfmüller SERVICE

When it comes to service, consulting and planning, companies tend to talk and cross-reference a lot. We, too, could start singing the praises about what you can expect from us. There would be enough qualities, projects, ideas and capabilities to display. But we prefer to leave the singing to those who are better at it, while we concentrate on doing what makes people sing. For decades this has worked best for our clients and partners – with individual service, constructive support, meticulous regard to deadlines and high-quality production. We are looking forward to assuring you of the same, maybe it is your turn to sing this time.



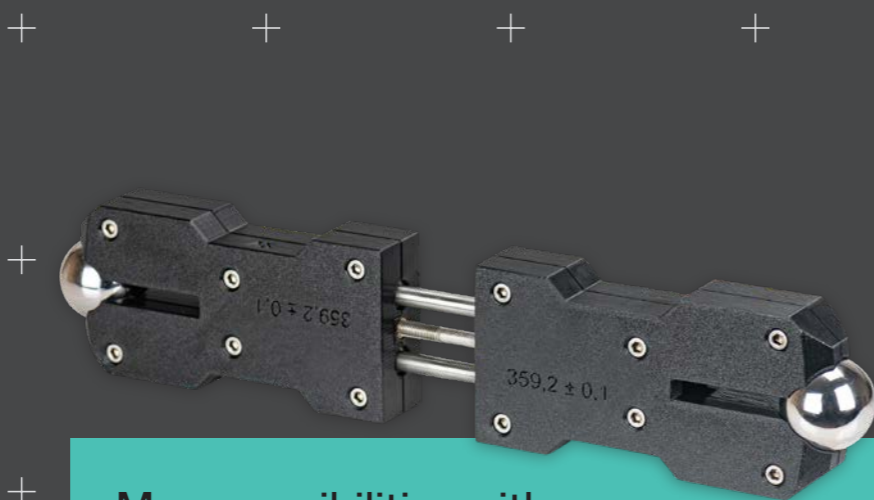
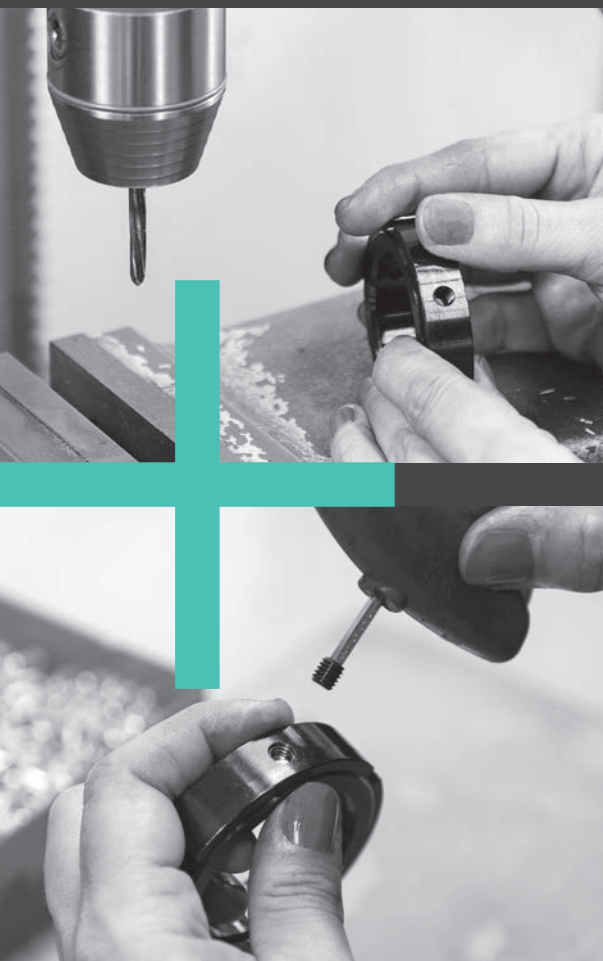
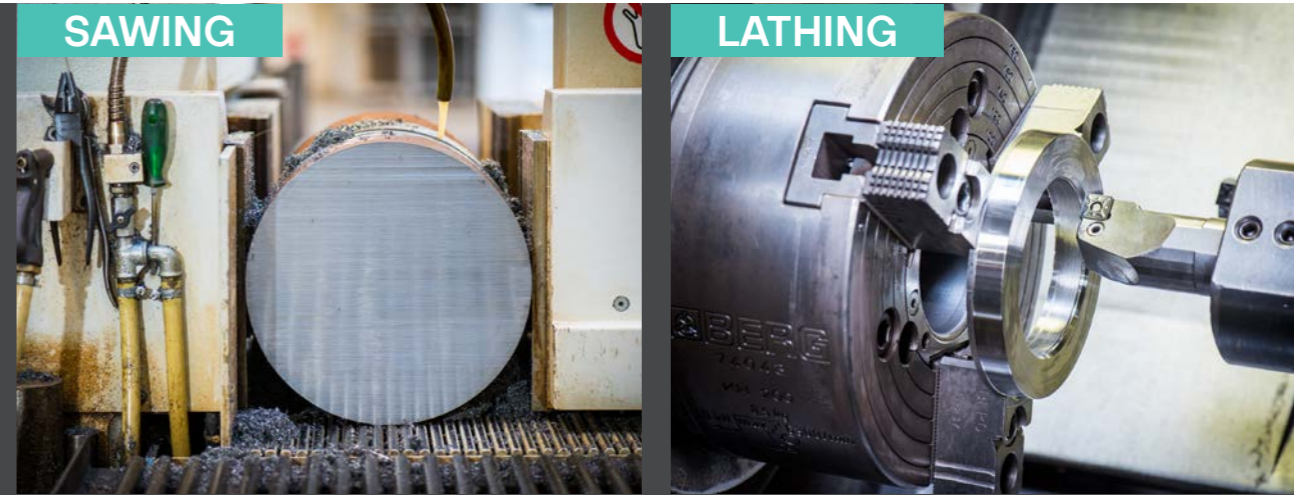
PRECISE CRAFTSMANSHIP MEETS MODERN MANUFACTURING

We join together what belongs together.

The level of automation in our production is constantly increasing, but some of our products and processes also need an **experienced hand**. When they are ready for quality inspection at the end of our production, these high precision parts are given a **final manual treatment**. In precise steps, skilled workers insert special safety mechanisms, assemble further components, deburr, polish, conserve and ensure functional and operational readiness.

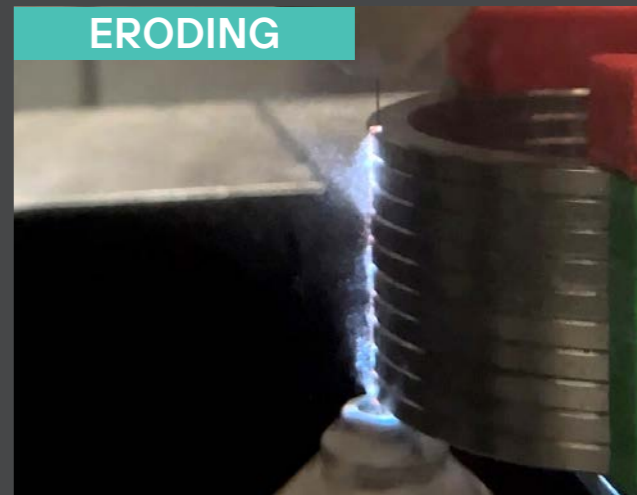
Thanks to years of experience and comprehensive know-how from production and application, our assembly department works with high precision and efficiency.

Through the **flexible combination of mechanical and manual production, as well as increasing automation**, we are able to manufacture highly complex products economically and efficiently.



More possibilities with new 3D printing processes

We can manufacture fasteners – also **additively**. For years now, we have been successfully producing **3D parts** both for in-house production, e.g. tools or certain devices, as well as for specific customer orders. You too can benefit from this **new and flexible manufacturing method** from our company. We would be pleased to inform you about our possibilities, usable materials and the high potential of a revolutionary technology.



Step by step, our experts put together all component parts turning our product into your solution!

WE DON'T HAVE TESTING STRESS

High standards require a wide range of testing equipment ...

... especially considering the enormous number of different kinds of fasteners. If necessary, we also manufacture thread gauges ourselves.

All testing equipment is regularly monitored in accordance with the requirements of **DIN EN ISO 9001**. Production and deadlines are closely linked in our manufacturing and coordinated with you.



Our remedies for exam stress:

- + more than 2000 measuring and testing devices
- + With our Zeiss 3D measuring machine, we can not only measure gauges, but also document complex form and position tolerances.
- Additional devices:
- + a magnetic particle crack detection system
- + Rough depth gauge,
- + a spectral analysis device,
- + Hardness and surface layer thickness gauges
- + various fitting calibers, micrometers, gauge blocks etc.



Not only in the case of quality assurance tests on parts requiring approval is there a demand for experience, classic testing instruments and state-of-the-art equipment.

ENSURED QUALITY

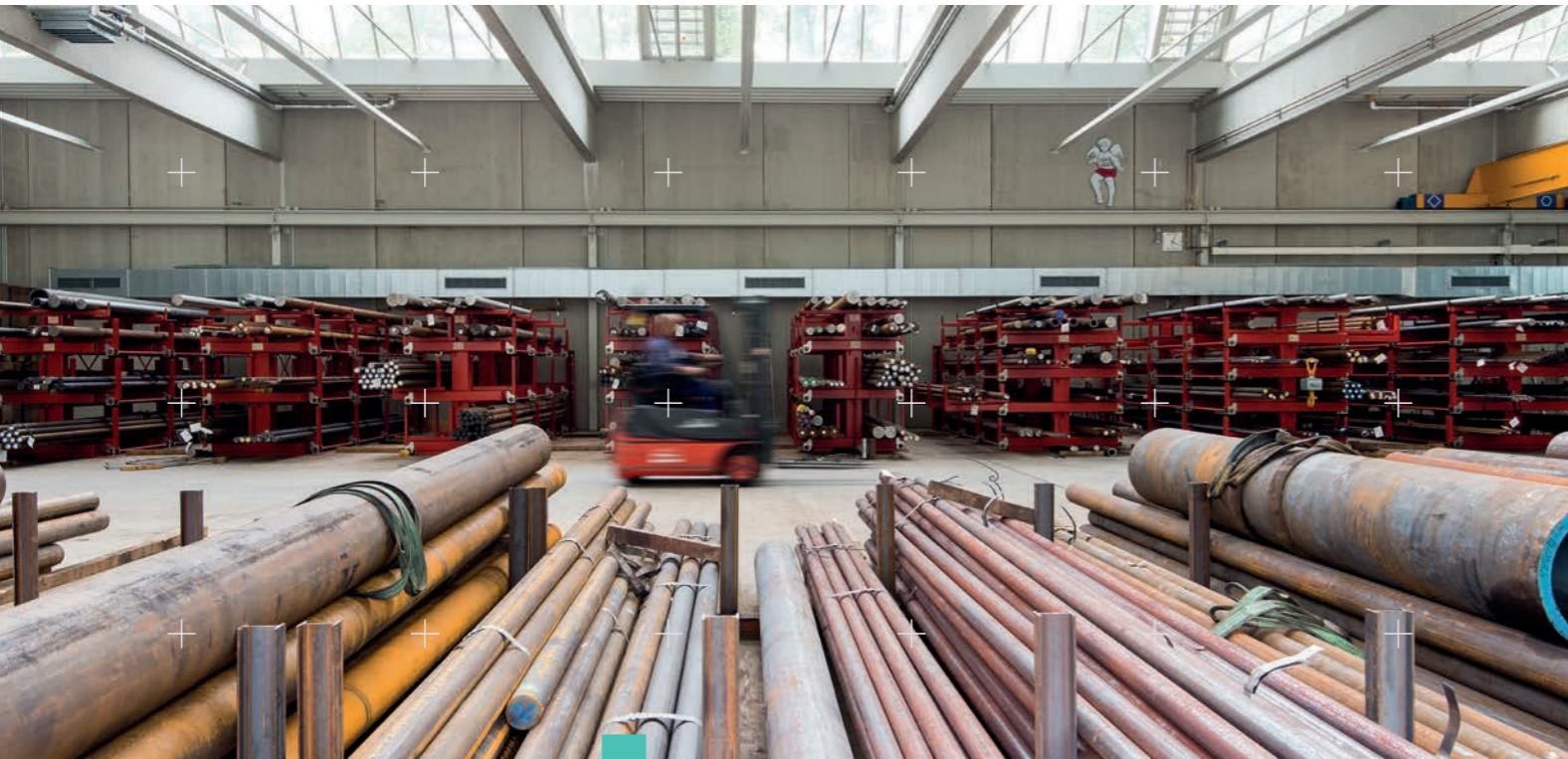
Your products are tried and tested every day. So are we. **DIN EN ISO 9001** is our minimum standard.

Our quality assurance system has a long tradition and is a decisive factor for our success. Therefore, it is also constantly being further developed and adapted to the increasing requirements of our customers.

In addition to our **certification according to DIN EN ISO 9001** as our minimum standard and the fact that we are approved manufacturer according to the **pressure equipment directive AD 2000 W0**, we also convince large corporations of our high quality standard again and again during regular company audits.

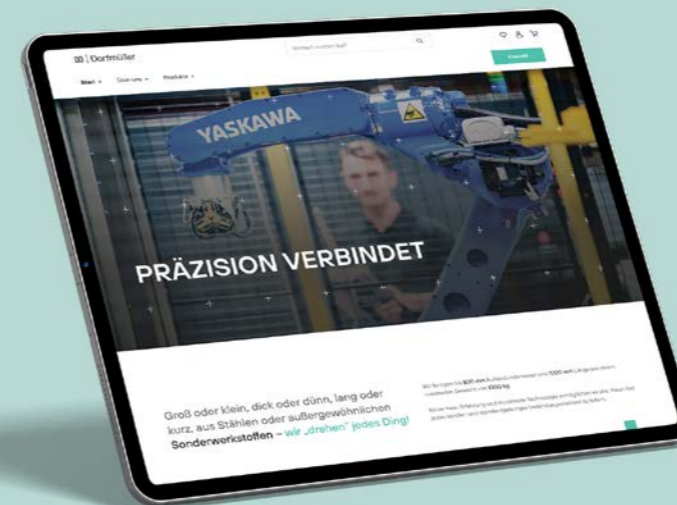
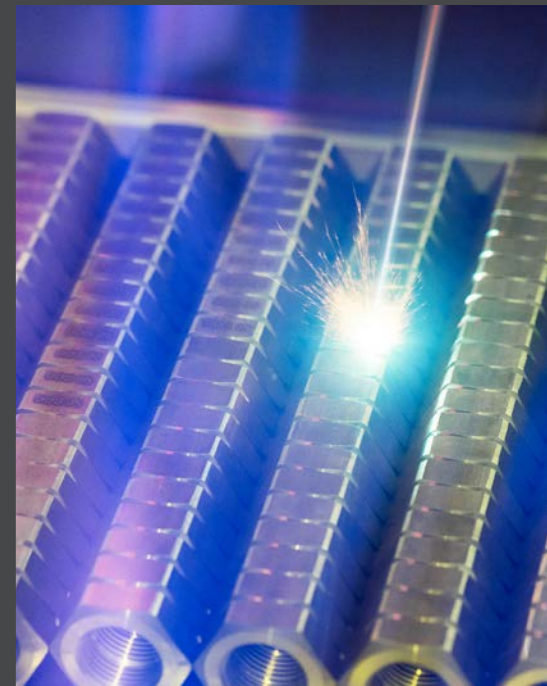


YOUR WISH IS OUR COMMAND



The Dorfmüller range is deep and wide, the warehouse large and high.

Nobody can see into the future and know today what is needed tomorrow – but we can prepare for maximum spontaneity in the market and corresponding material requirements. Therefore our **1,000 m²-large warehouse** usually holds **400 tons of raw materials** – common as well as more specific ones. At short notice, we effortlessly draw non-store materials, measurements and qualities from our international supplier network. Even with the most unusual materials our purchasing department has no trouble whatsoever in finding out the current quickest and economical solution. The fast availability of materials accompanied with our optimised processes of production guarantee a smooth and trouble-free delivery cycle.



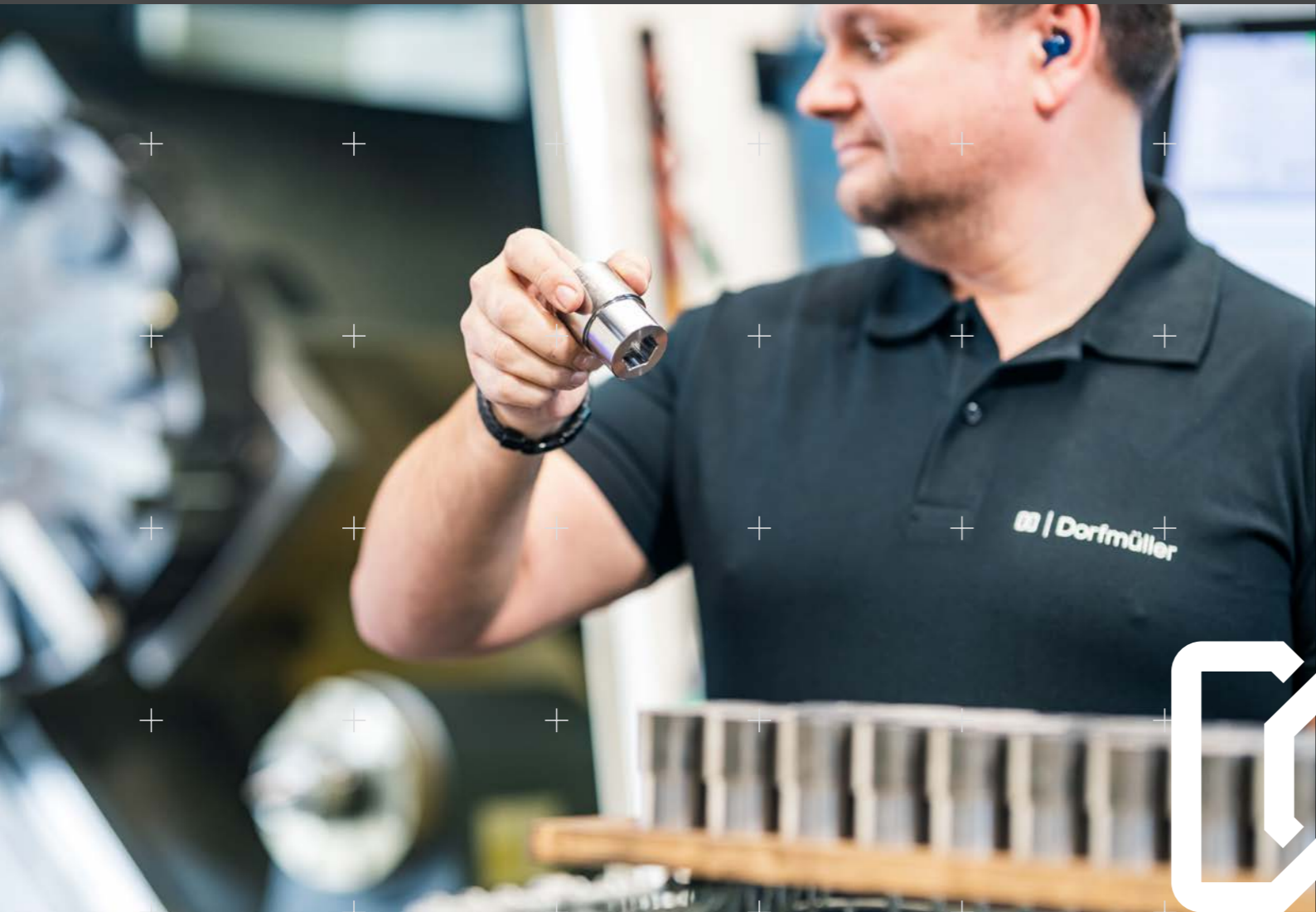
Dorfmüller digital

Direct information on our delivery program can be found on our website:



VERY BIG IN SMALL QUANTITIES

HUGE QUANTITY – NO BIG DEAL



We handle small-scale series every day.

We pay the same attention to a unique specimen and a small series as we do to mass production. Some of our clients, constructors of special machines for example, are obliged to offer their customers individual solutions. **We enjoy manufacturing series of only a few pieces just as much as we like to indulge in mass production.** Our machinery is especially designed to complete even the most unconventional tasks in an economical as well as professional way. Prototypes can be evaluated using 3D printing. And if a part of the requirement – the geometry or the material, for example – suits our program, it does not really matter how many pieces we are asked to produce.

We handle high-volume production every day – and sometimes at night.

The more the merrier! In our production line, mass production ranges from lot sizes of fifty up to ten thousand pieces. That is why our machines and their respective operators work every day – and if required, longer hours. We drill, we turn, we mill, we grind, we quench, we erode and temper most materials, all in order to craft the perfect product for your needs in just the right quantity.

BEING NUTS FOR GENERATIONS

How the twist began.

It was a tiny smithy in a cellar where it all began. In the German town of Remscheid, back in the **year 1884**, two **brothers David and Friedrich Dorf Müller** started to manufacture drills. Sixteen years later, David Dorf Müller expanded the range of products, employed **his four sons** and moved with them into newly built factory premises. The turning point (in the finest sense of the word) came after World War I, when the family produced machine tools for wood processing; the first Dorf Müller fasteners were on the way. In the fifties, **David's grandson Wolfgang Dorf Müller** entered the family business. Very soon he concentrated the production on slotted round nuts and nuts with set pin holes. He invested in modern turning machines to manufacture bigger metric fasteners. In the long run, Dorf Müller conquered a corner in the market, due to bigger dimensions and fine accuracy. The family enterprise expanded. In 1986, the company moved into the newly built premises on Dreherstraße in Remscheid. The millennium brought new challenges; again Dorf Müller needed to expand. In 2009 – just in time for its **125th anniversary** – the family business added a newly built production hall and the offices moved into bigger rooms on top of the factory.

Investments and modernizations are constantly being made, thus aligning production, processes and the team with the modern requirements of the market. In particular, the areas of **IT and digitalization** have been the focus of the optimization processes in recent years. The company is now managed in fourth and fifth generation by **Klaus and his son Lucas Dorf Müller**. Today, Dorf Müller supplies a wide variety of customers in a wide range of industries, from medium-sized German companies to major international corporations.



The Dorf Müller family in the year 1910. In the middle you see the founder of the company, Mr David Dorf Müller

The right twist for generations.

Sustainability – today a modern topic in many places – has been lived and ensured at Dorf Müller for many years. As early as 2009, a **photovoltaic system** was installed on the production halls. In the meantime, it has been expanded to 200kwp and can cover **approx. 40% of the company's electricity requirements**. Our **vehicle fleet is already 90% purely electric**, the office is becoming increasingly paperless and energy-saving measures are not primarily practiced for cost reasons, but with the aim of leaving our **C02 footprint as small as possible**. We are continuously working to reduce emissions and produce in an environmentally conscious manner.



The production in the change of modern time:

The factories through the ages:



anno 1916



anno 1970



anno 2009



Continuous modernization



Productive automation



Innovative diversification



+

+

+

+

+

+

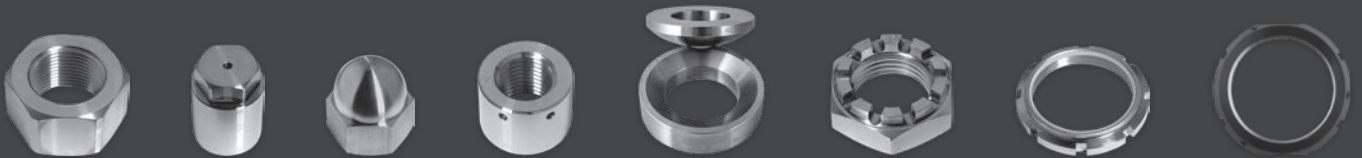
+

+

+

+

+



+

+

+

+

+

+

+

+

+

+

+

+

+

+

+

+

+

+

+

+

+

+

+

+

 |

Dorfmueller

David Dorfmueller Söhne GmbH & Co. KG
Dreherstraße 22
42899 Remscheid - Germany

Phone: +49 (0) 2191-694 20-0
Email: info@david-dorfmueller.de



www.david-dorfmueller.de