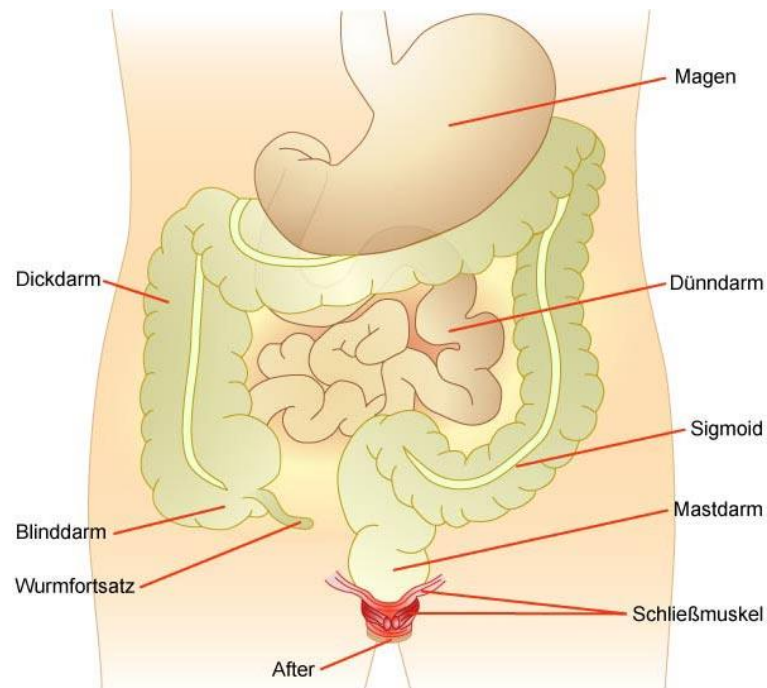


# Radiologie Abdomen

## 1. Magen- Darm- Trakt



# Radiologische Methoden

- ◆ 1. Konventionelle Röntgendiagnostik:
  - Abdomen in Rückenlage & Linksseitenlage, ergänzend im Stehen, Rechtsseitenlage, Bauchlage und Zielaufnahmen
  - **Indikationen:** V.a. Perforation, Ileus, Fremdkörper, Konkremente, Lagekontrolle eingebrachter Materialien

# Radiologische Methoden

## ◆ 2. Sonographie

- transabdominell mit hochauflösenden Schallköpfen (ab 3,5 MHz)

- ***Indikationen:***

Dünndarm und Kolon:

Kokarden, Darmwandverdickungen, freie Flüssigkeit

# Radiologische Methoden

## ◆ 3. CT und MRT:

### *Indikationen:*

- topographische Lagebeziehung zu den Organen
- Erfassung entzündlicher und tumoröser Prozesse
- Informationen über Veränderungen der Nachbarschaftsstrukturen, LK oder Fernmetastasen

# Spezielle Untersuchungen

- ◆ 1. „Magen- Darm- Passage“:
  - 12h- und 24h- Röntgen  
Abdomenübersichtsaufnahme (Chirurgie Prof. Klar) nach oraler KM-Gabe.
  - **Indikation:** Beurteilung der Passage bis zum Rektum (Differenzierung Dünndarmileus/ -subileus)

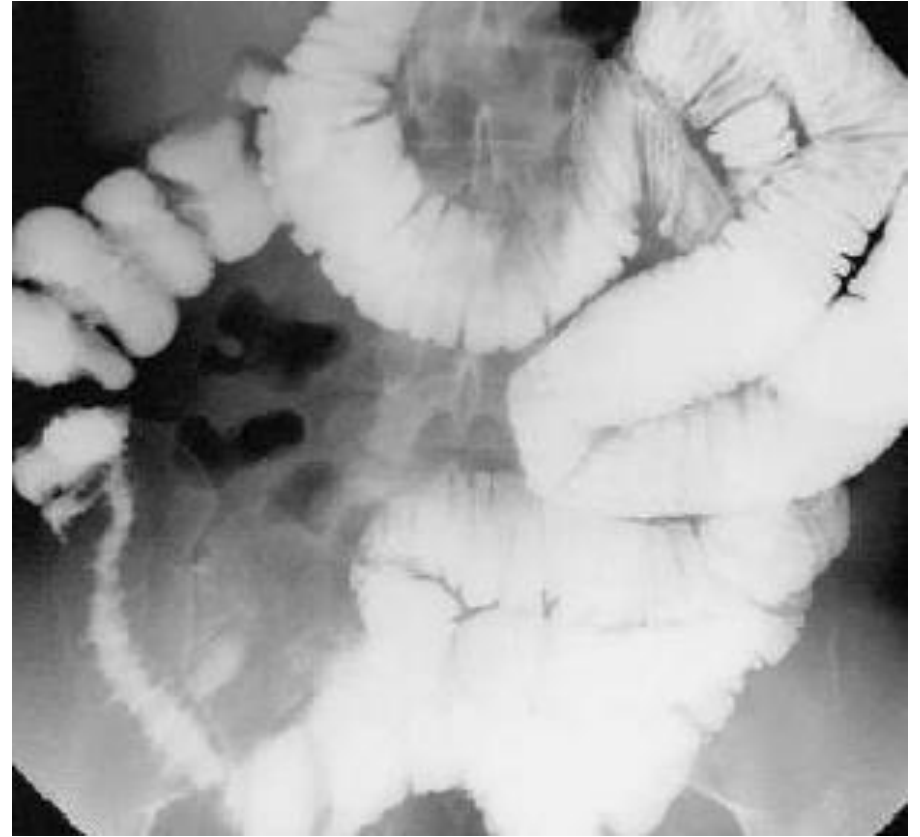
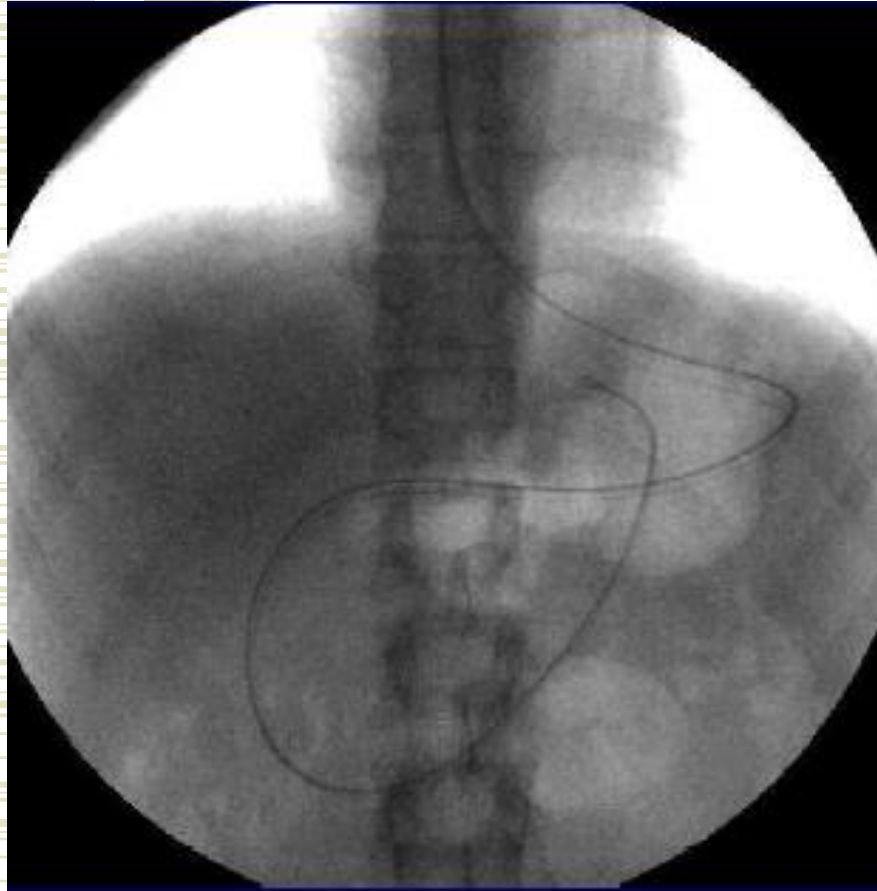
# Spezielle Untersuchungen

## 2. Dünndarmuntersuchung nach Sellink (konventionell/ MRT):

konv.: Dünndarmsonde unter Durchleuchtung  
antegrad bis zum Treitz- Band vorgeschoben  
→ Bariumsulfat-Suspension und  
Methylzellulose-Lösung (oder H<sub>2</sub>O) appliziert,  
MRT: Osmofundin /Teegemisch oral

### ***Indikation:***

entzündliche Dünndarmveränderungen mit  
Komplikationen wie Fistelungen,  
Abszedierungen, Stenosen, Darm-  
Verziehungen, (Motilitätsstörungen)



# Spezielle Untersuchungen

## ◆ 3. Kontrastmitteldarstellung Kolon:

- Retrograder KM-Einlauf in Mono- oder Doppelkontrasttechnik

- ***Indikationen:***

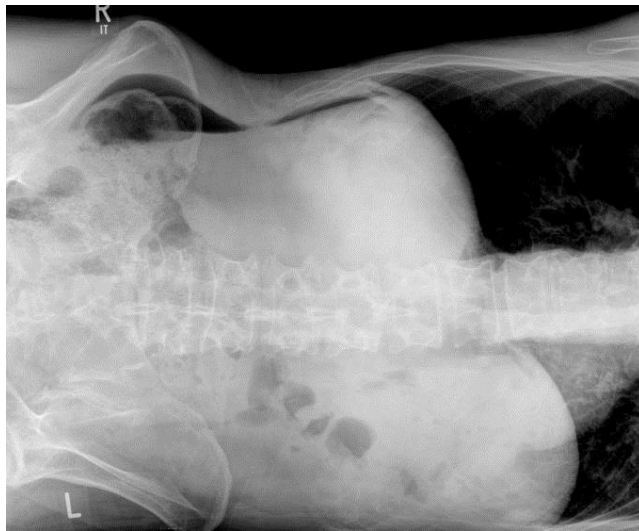
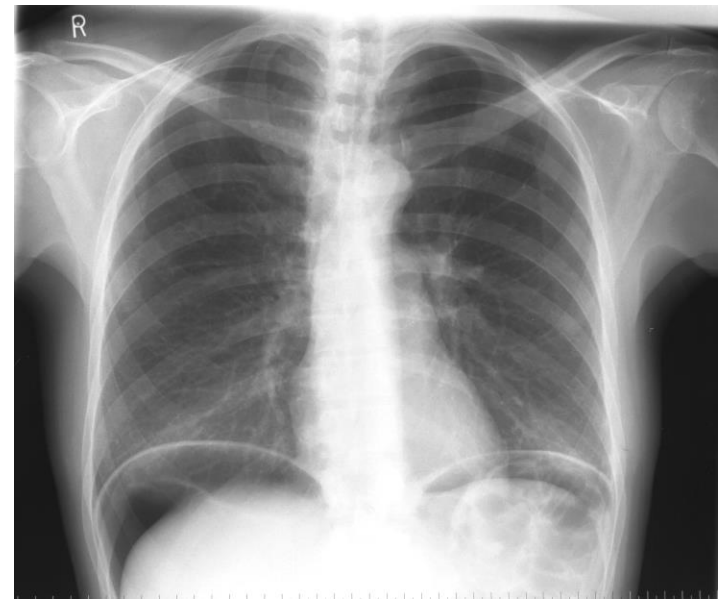
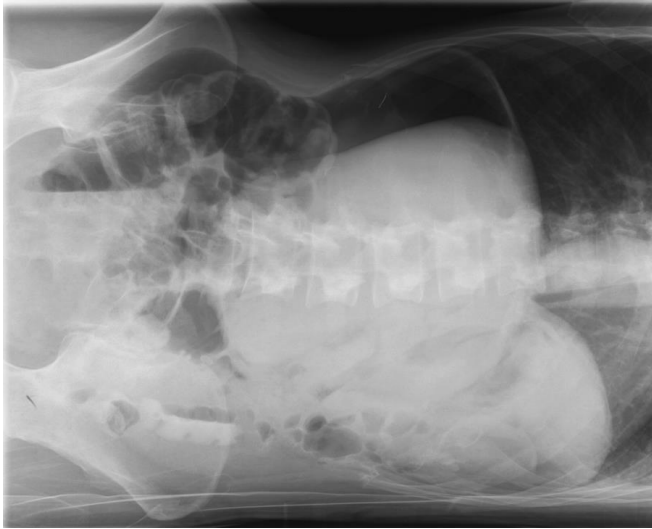
Passagehindernis für Endoskop, entzündliche Darmveränderungen, Divertikel und Komplikationen sowie tumoröse Wandveränderungen.

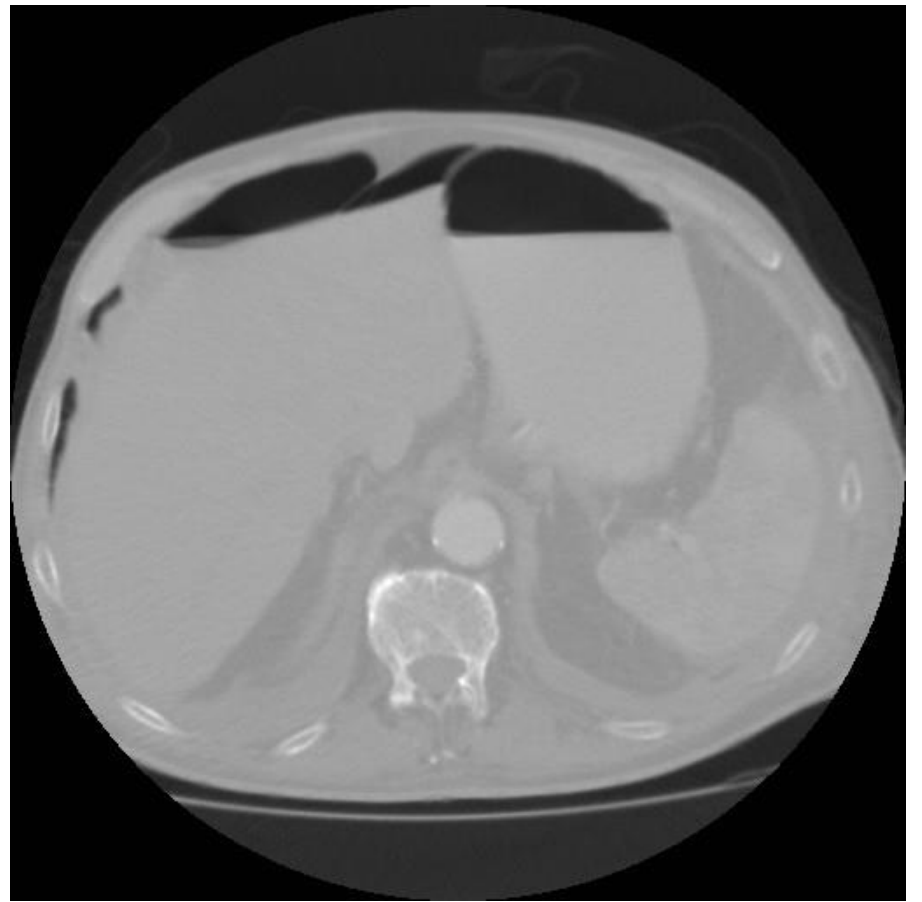


# Kolonkontrasteinlauf

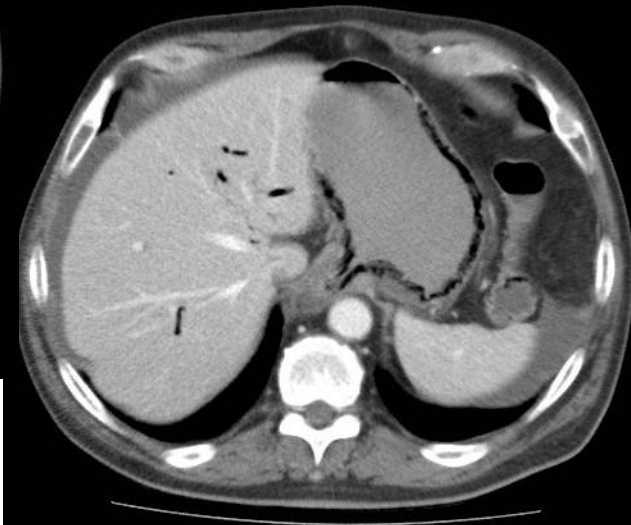
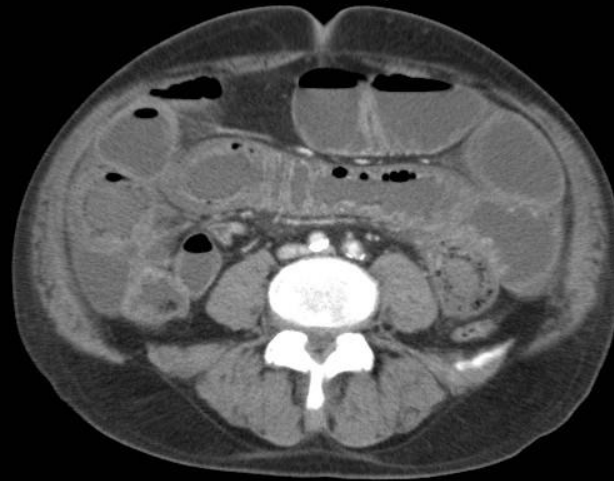
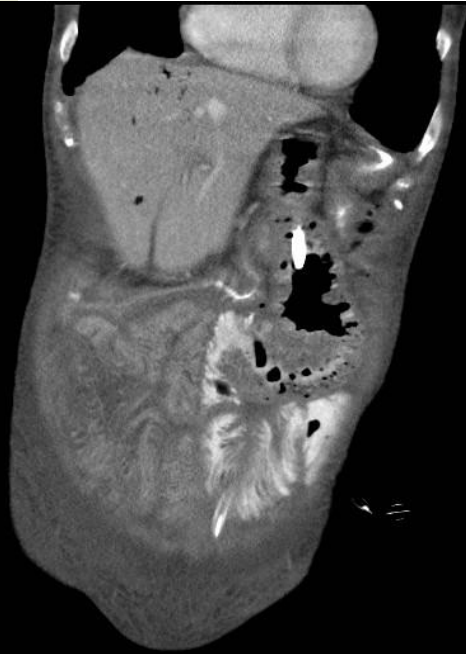


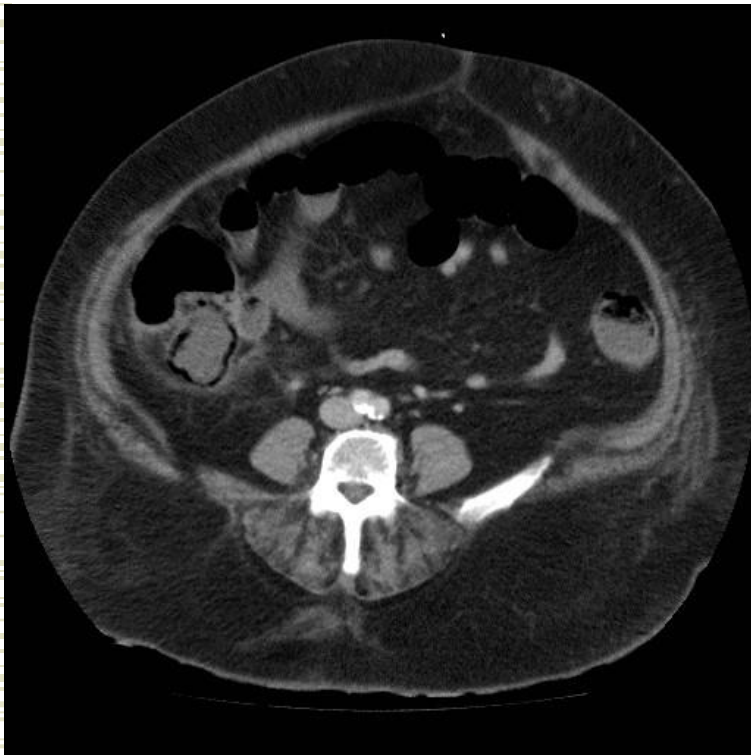
# Leitbefunde akuter Notfall





# Leitbefunde akuter Notfall





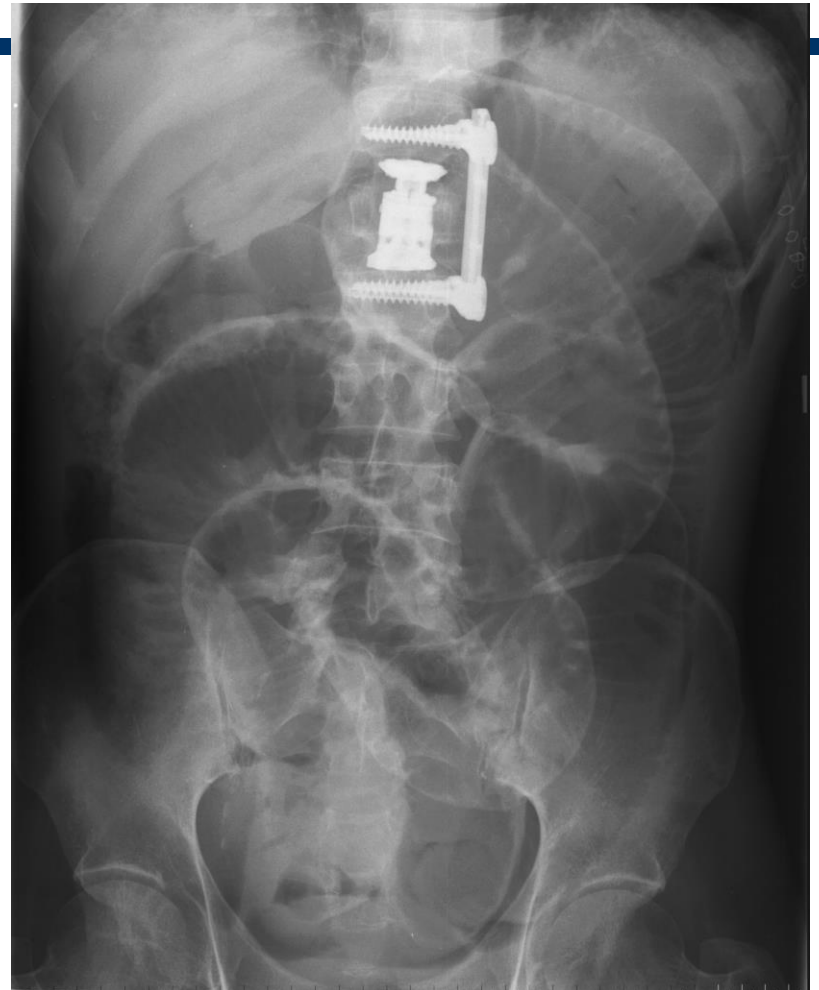
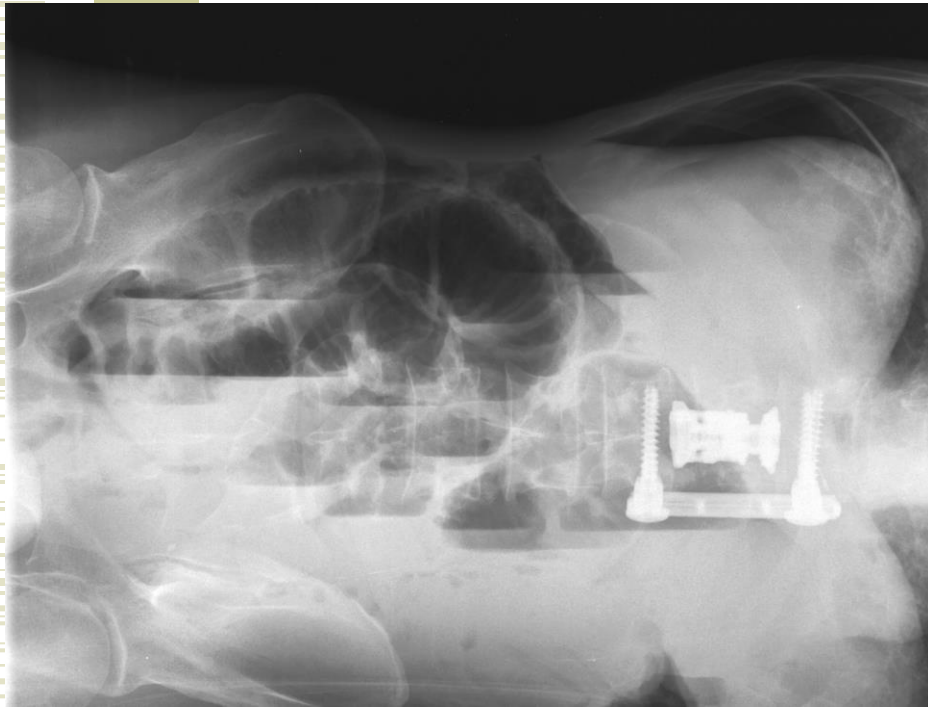
0050370741  
2242568: 4: 1113  
-8.0mm  
 $\alpha=0.0$   
 $\beta=0.0$   
 $\gamma=-9.7$

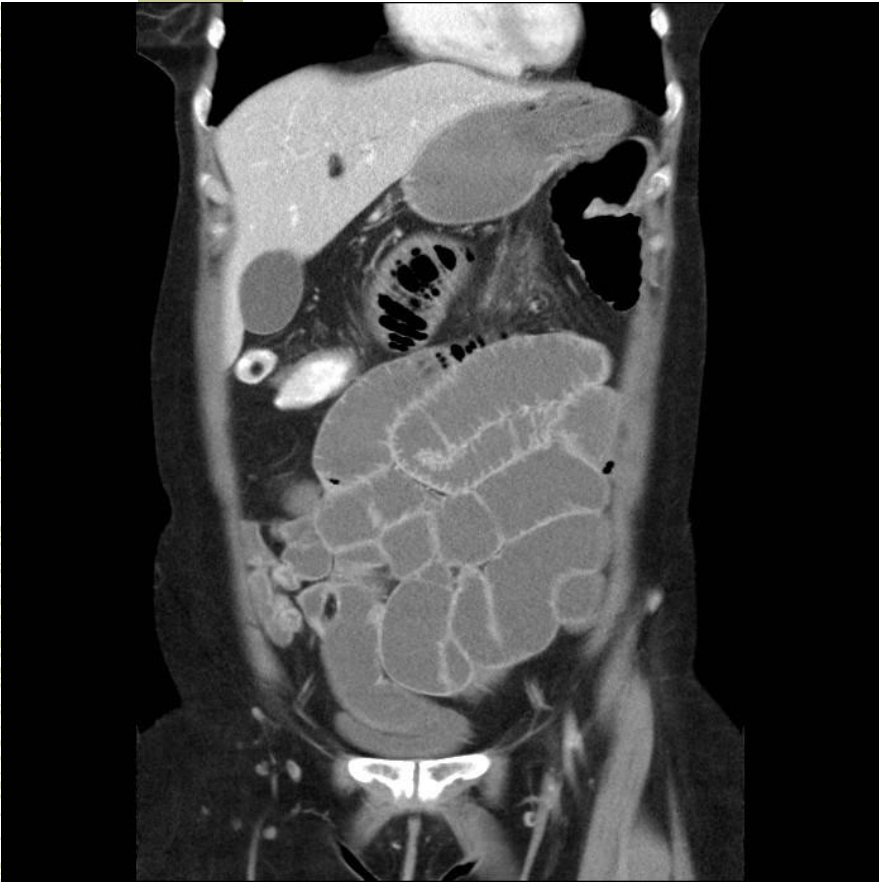




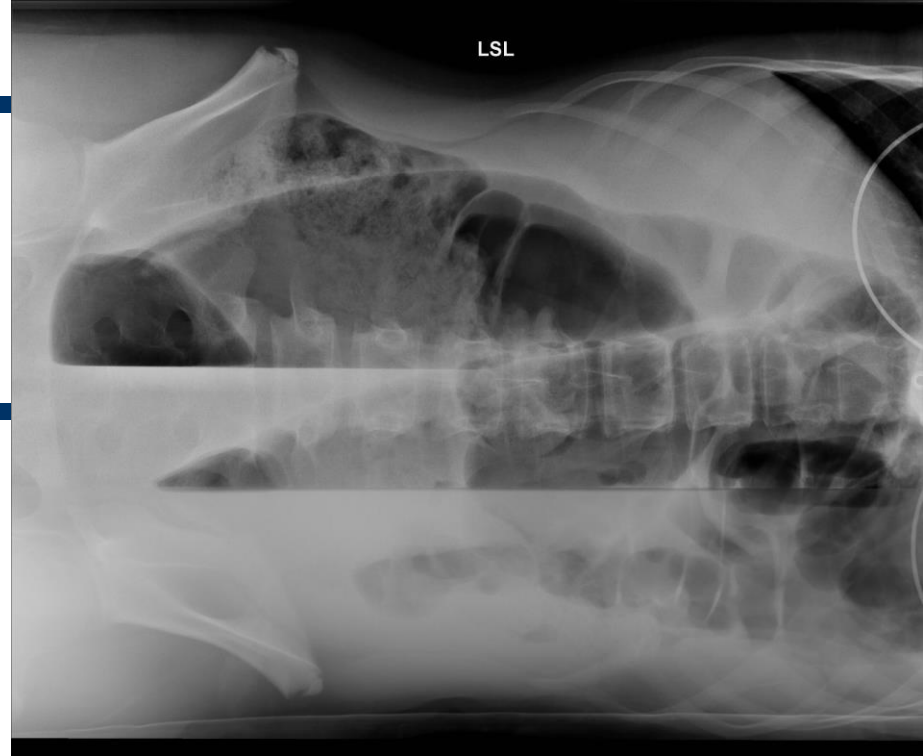
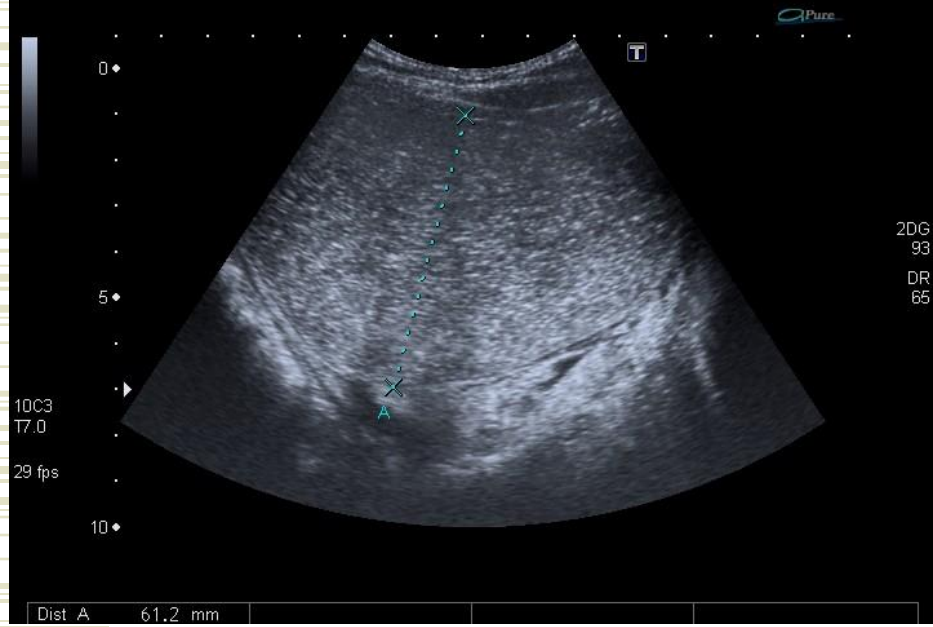
# Leitbefunde akuter Notfall

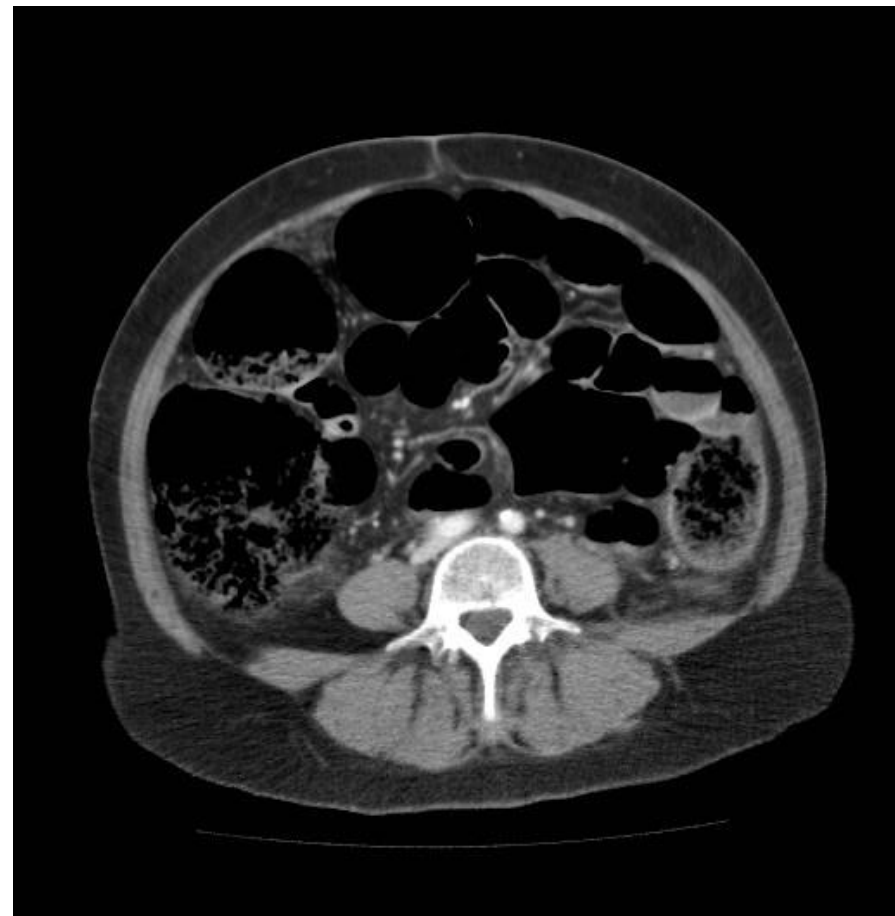




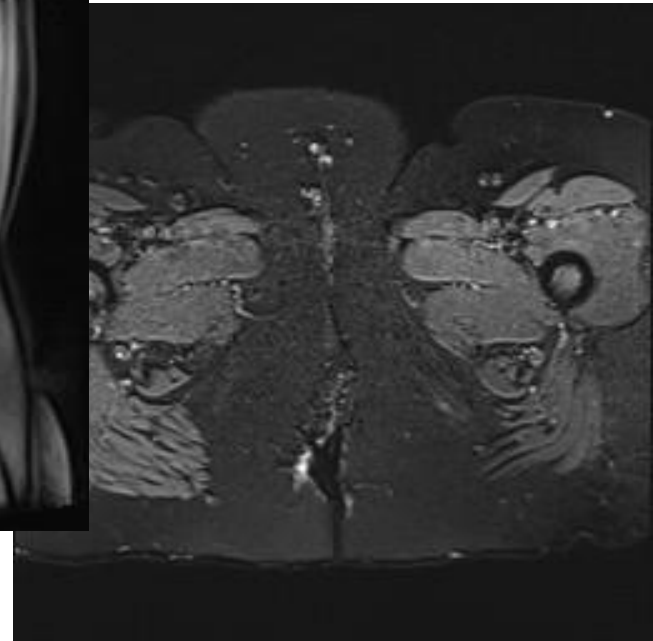
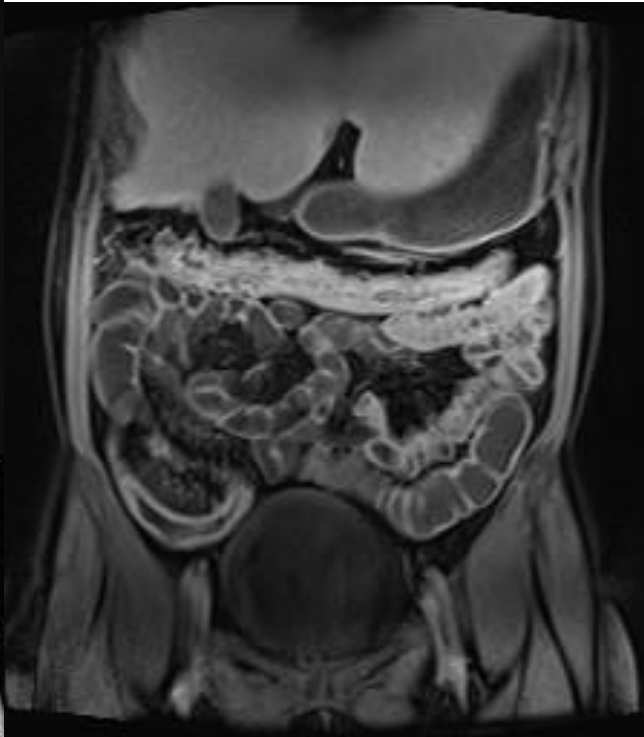
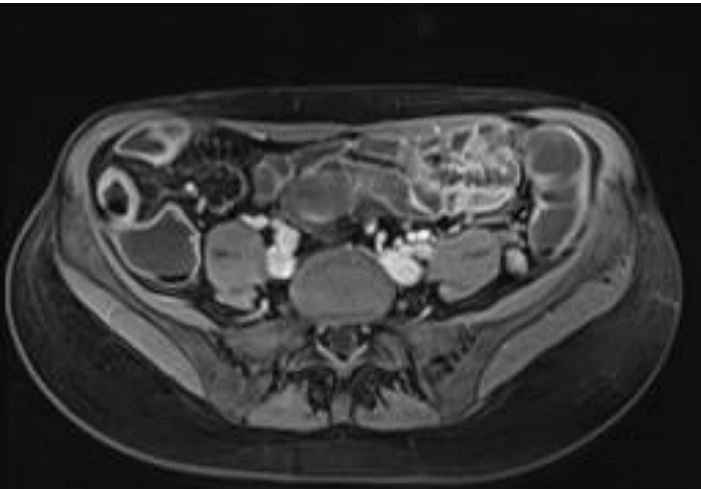








# Entzündliche Darmerkrankungen

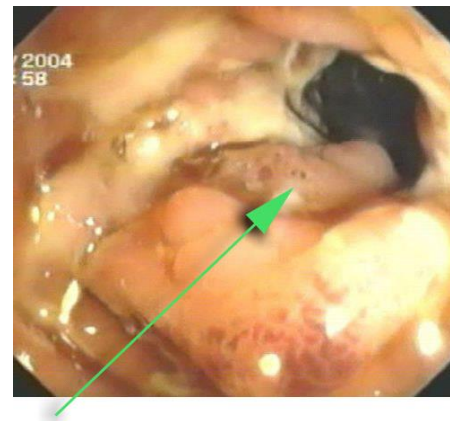
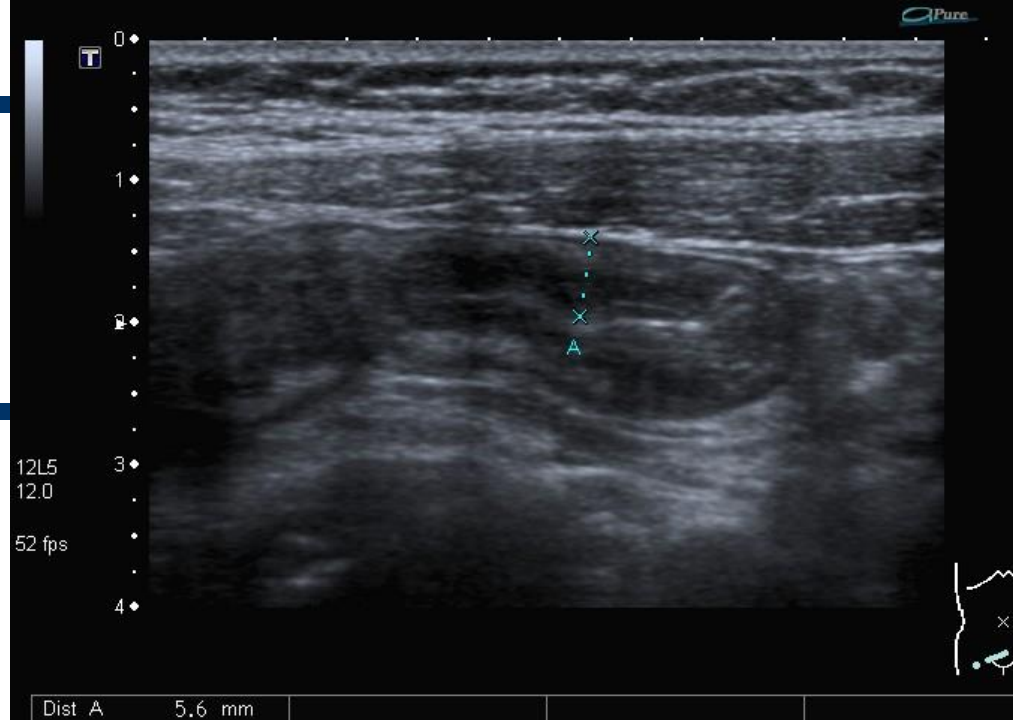
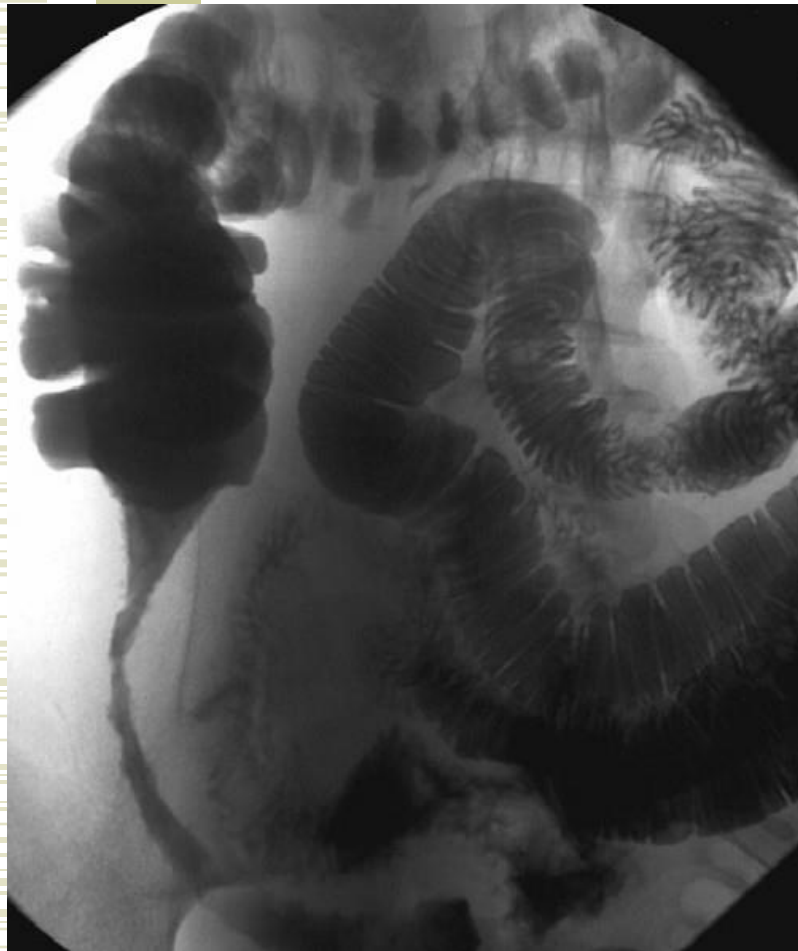


00000034 / 7  
24.06.1988  
024Y  
M  
R  
1  
7  
0

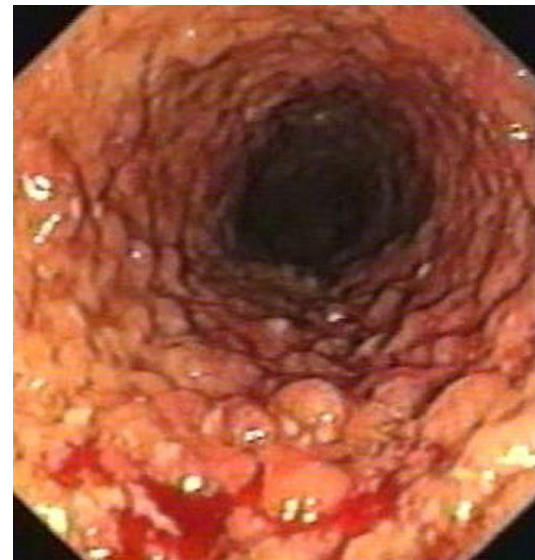
21:44:00

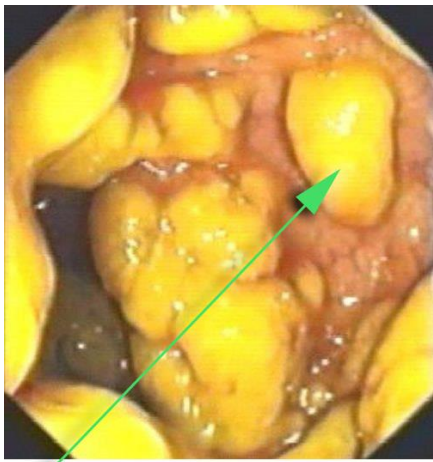
f2\_haste\_tra\_mbh  
MRT ABDOMEN STANDARD  
DosisIndikator :  
DosisIndikator Fuji  
Station:RAD105

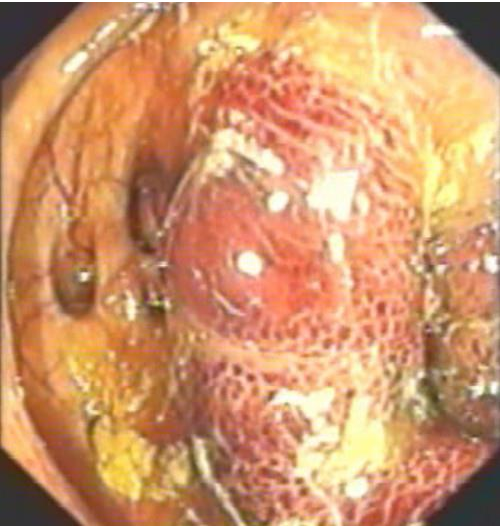
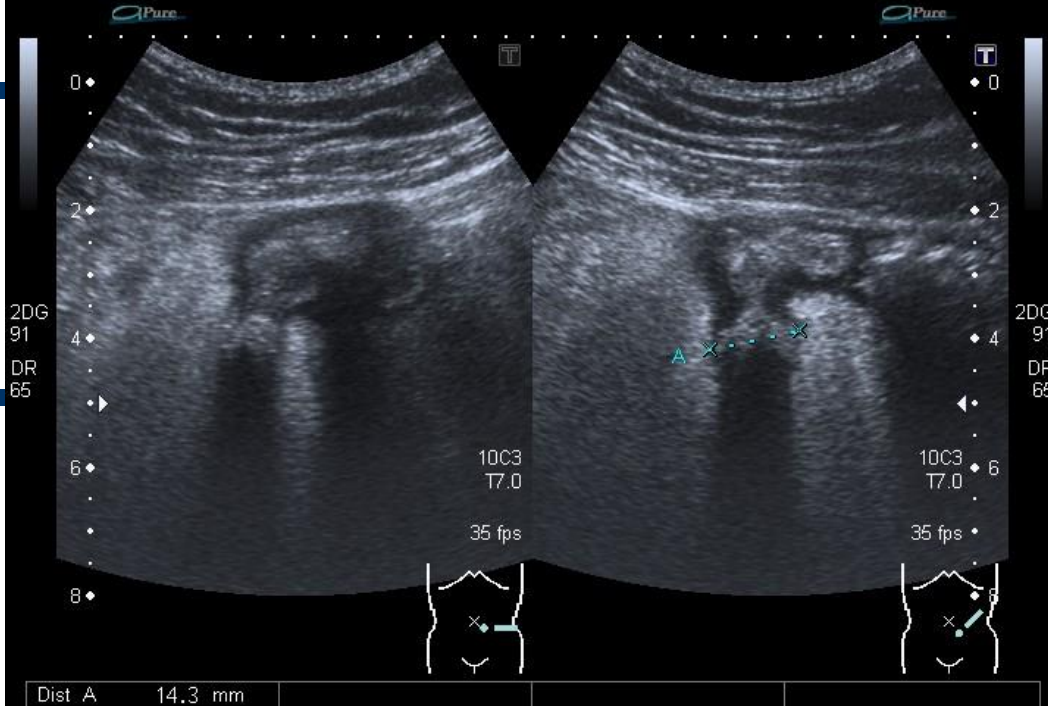
IFDIR Uni-Klinikum Rostock POZ  
P135



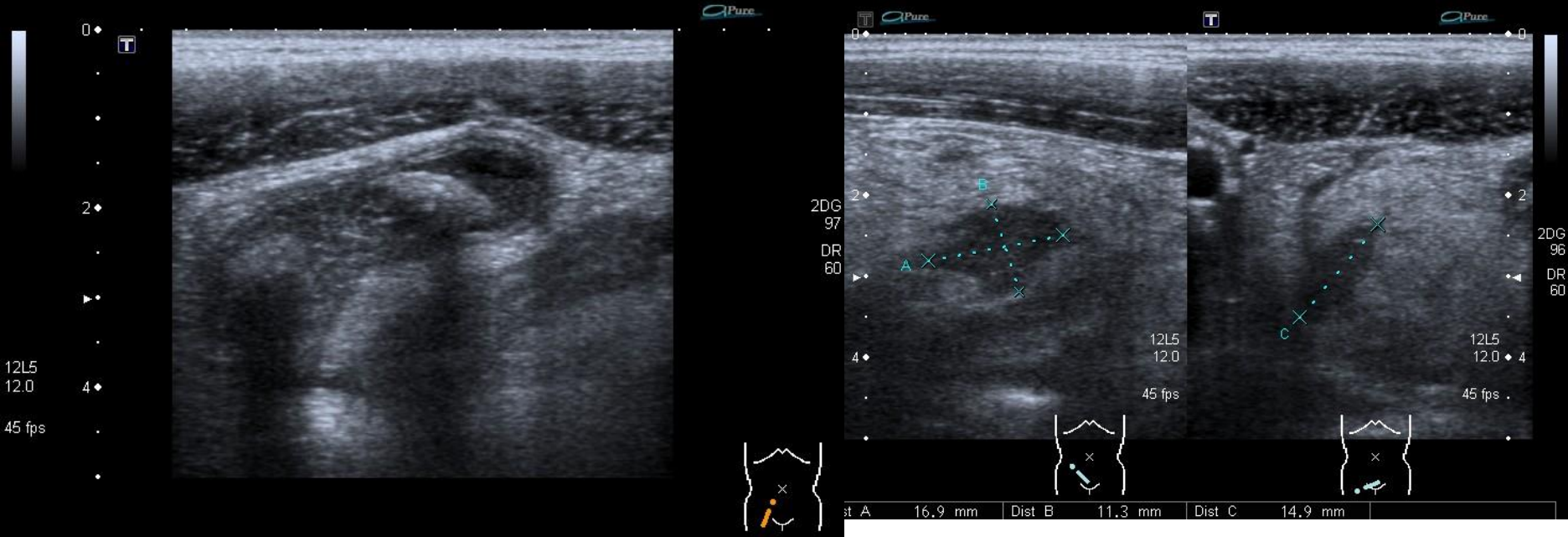




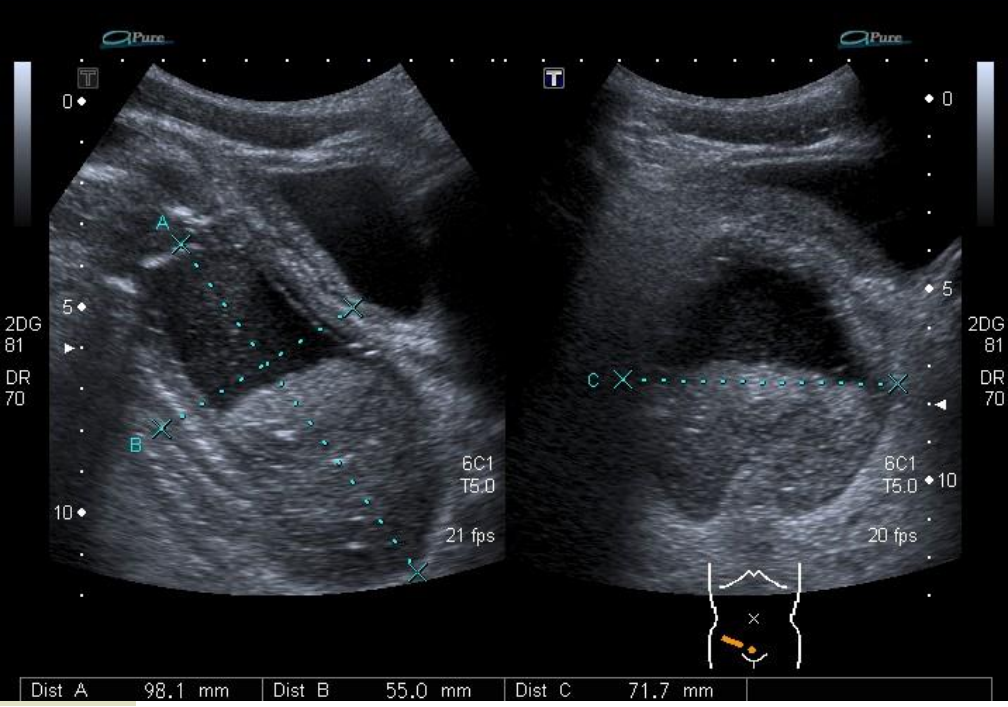




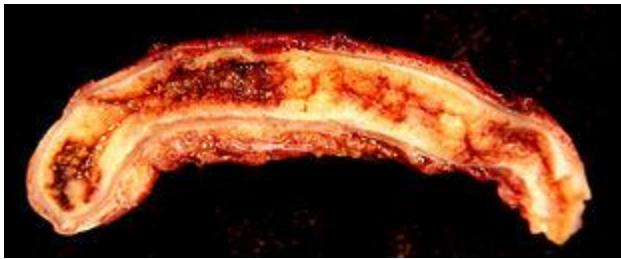


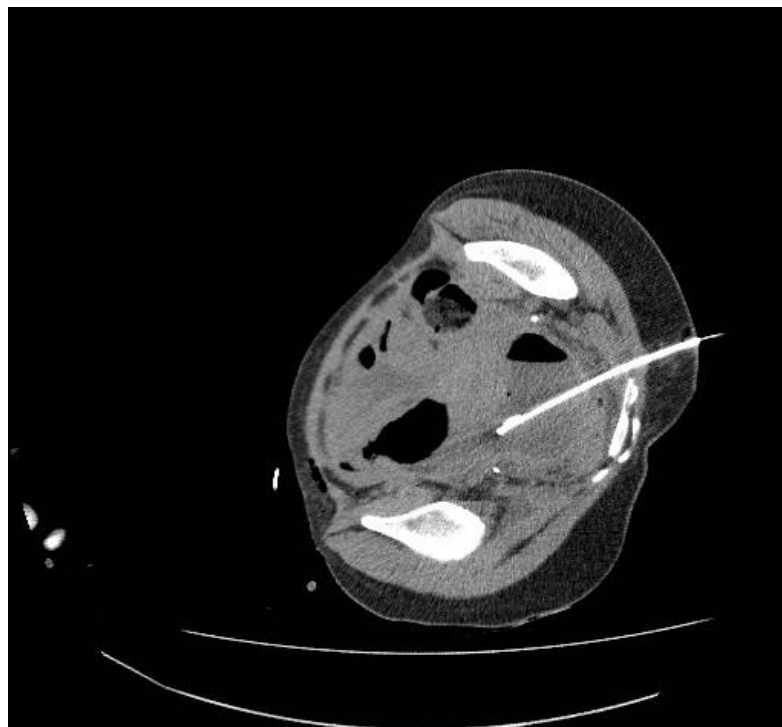
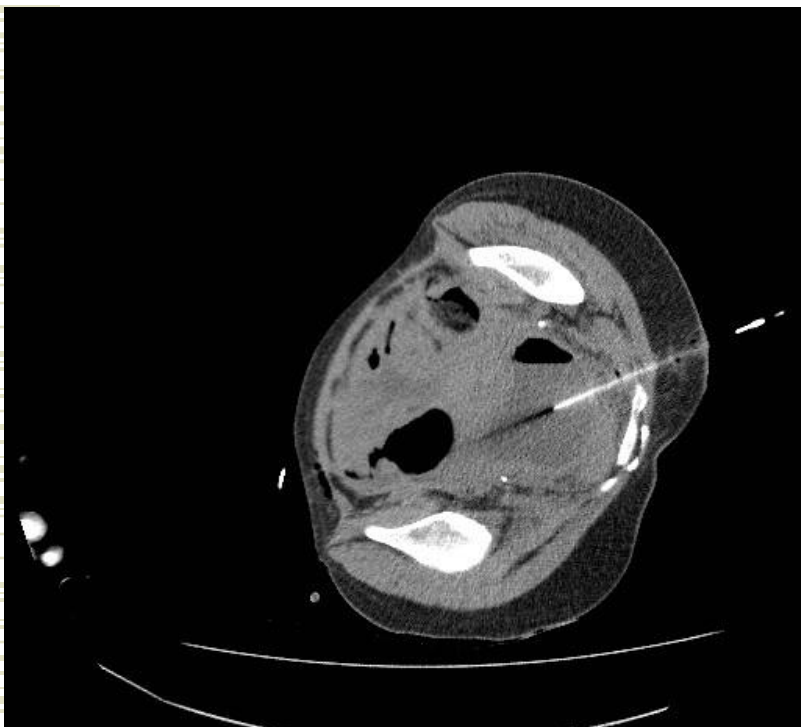


TOSHIBA IfDIR PAED UNI ROSTOCK - - Abdomen 10:33:29





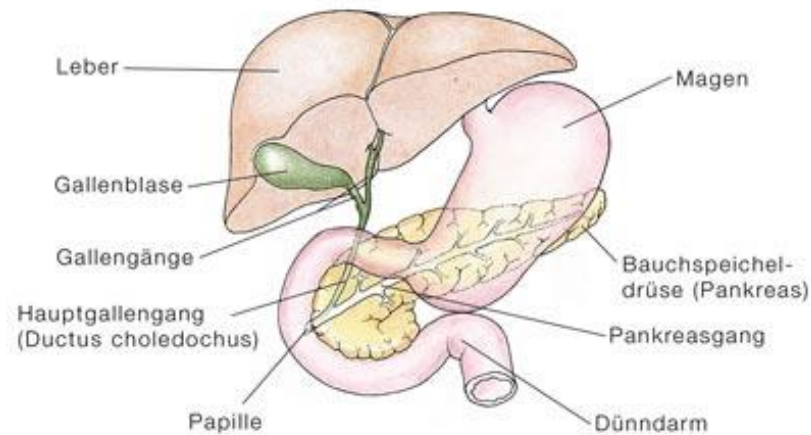


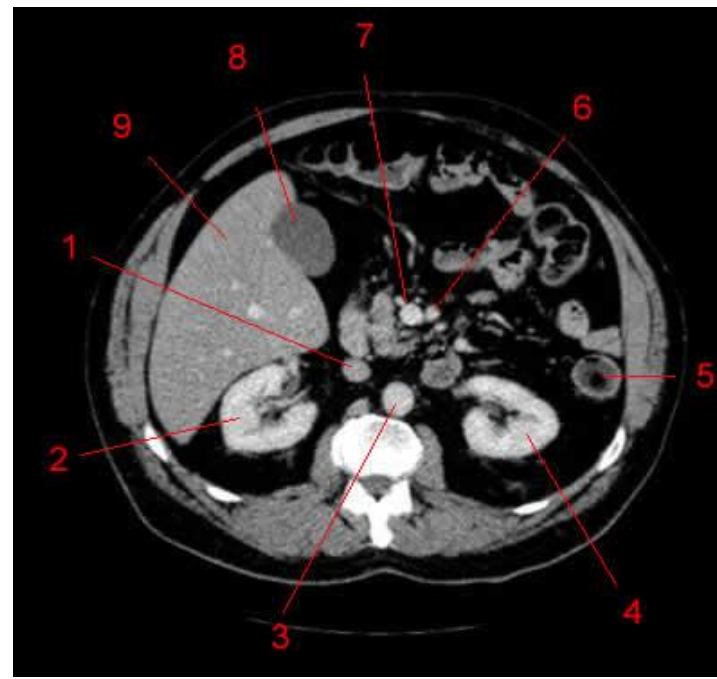
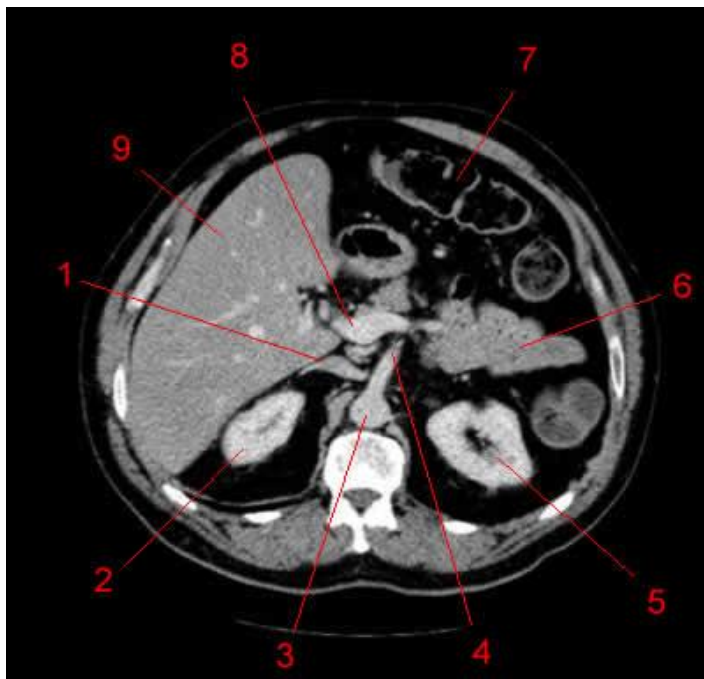
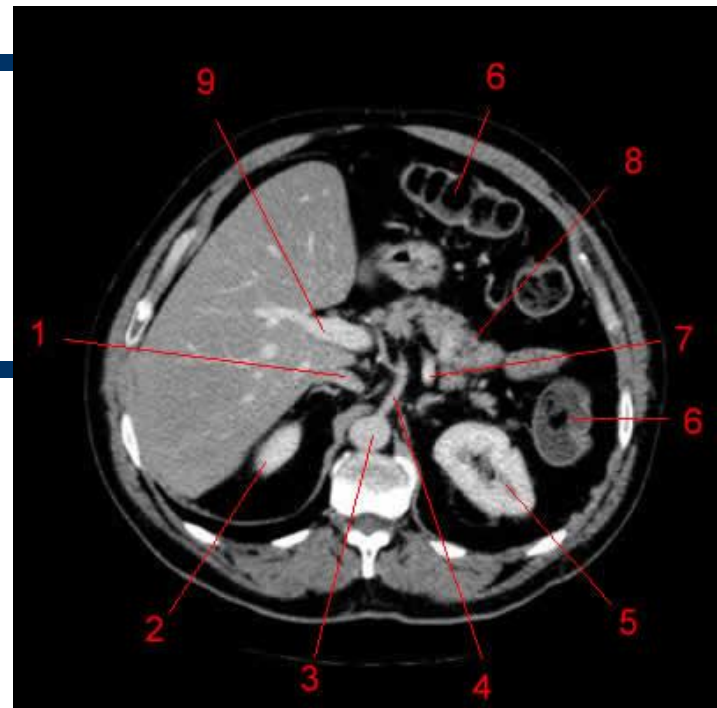
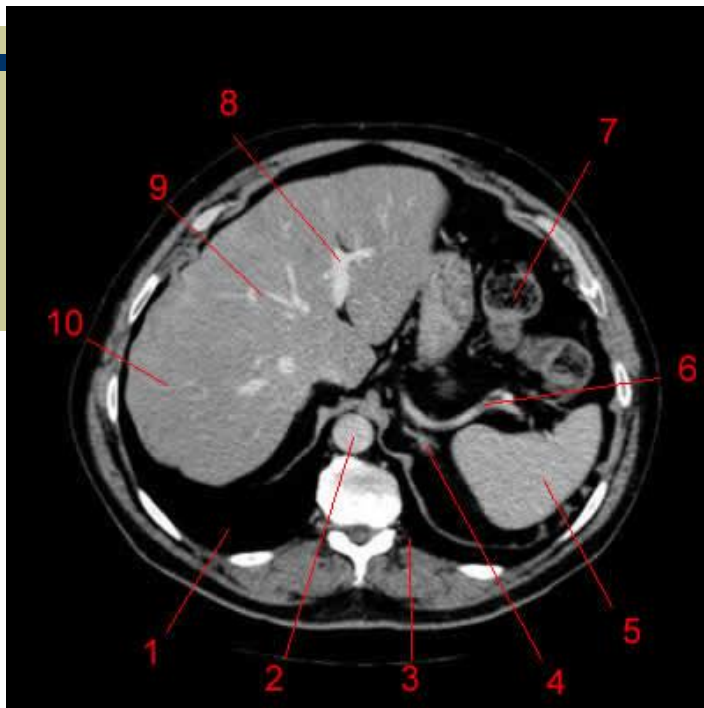




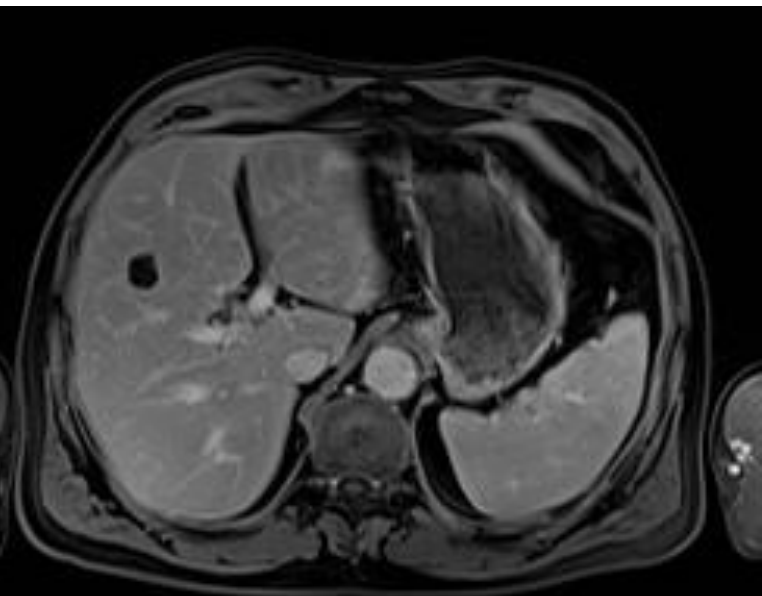
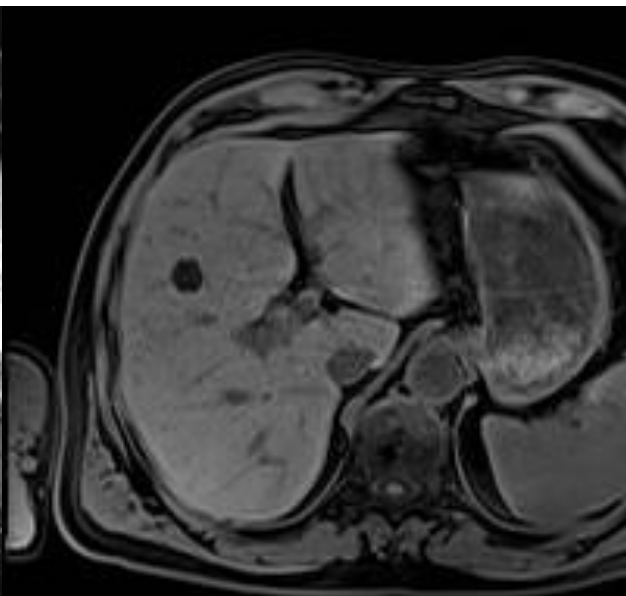
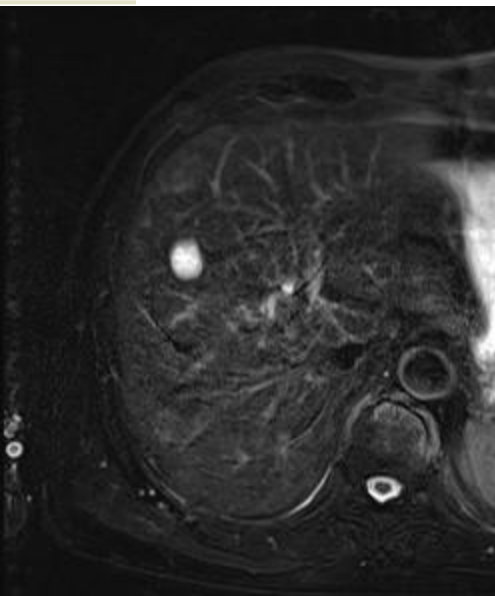
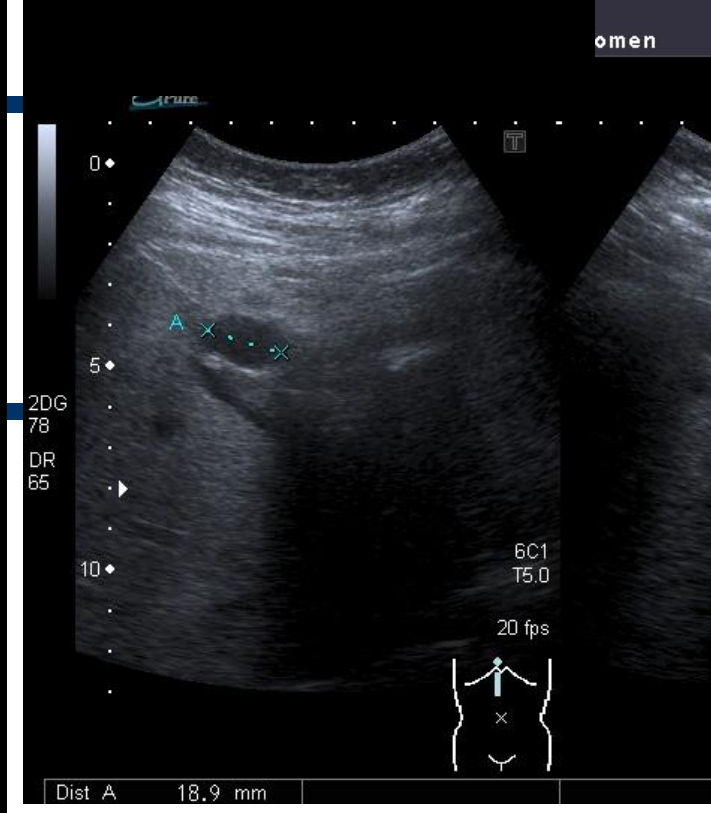
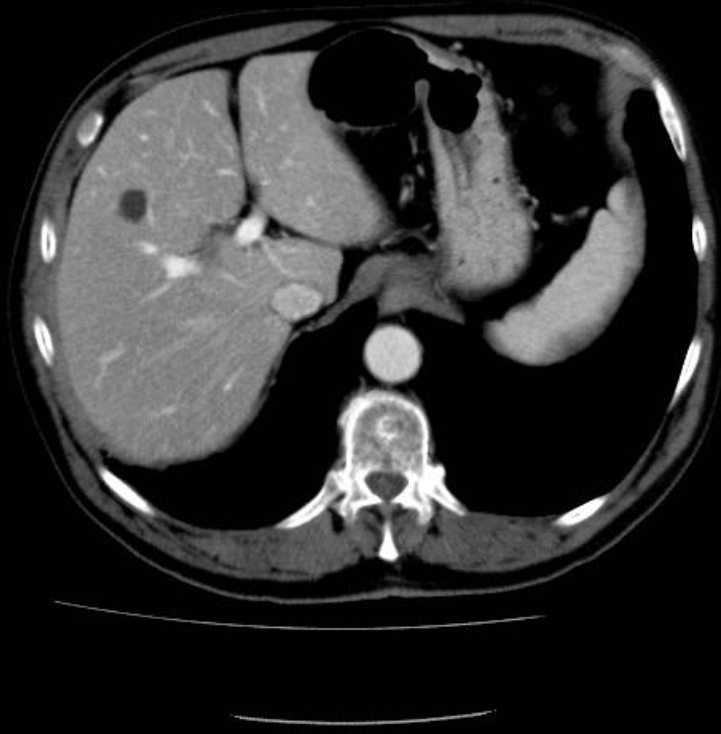
# Radiologie Abdomen

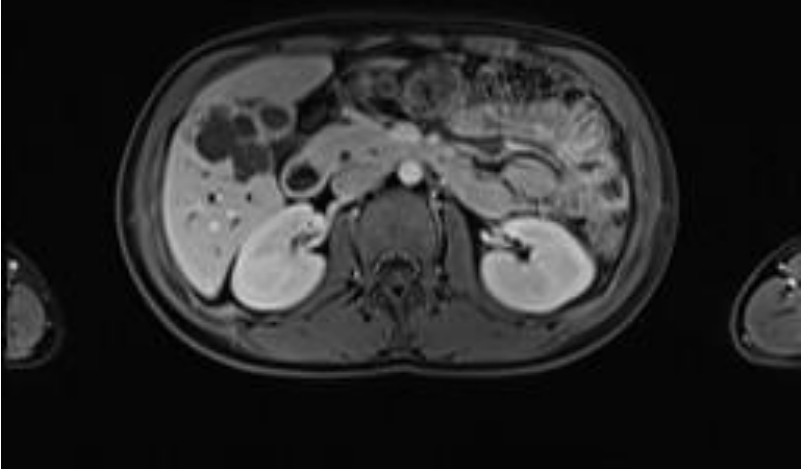
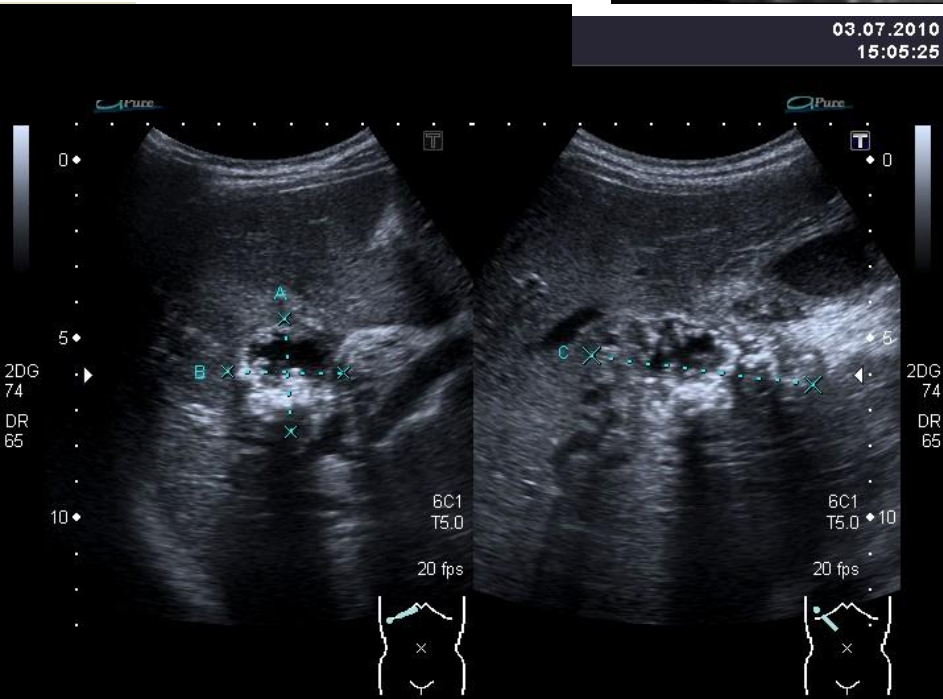
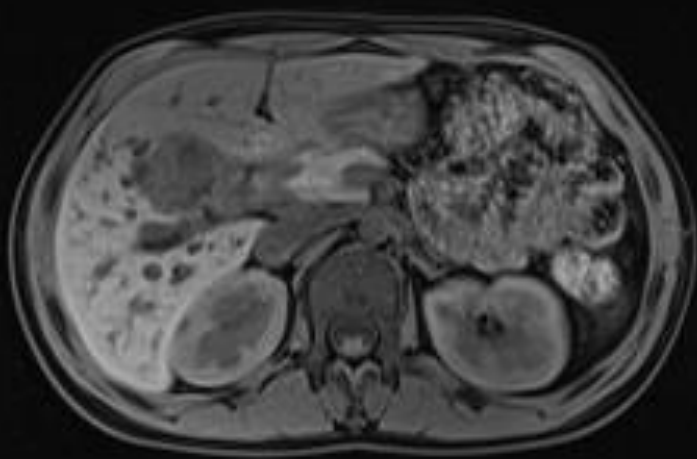
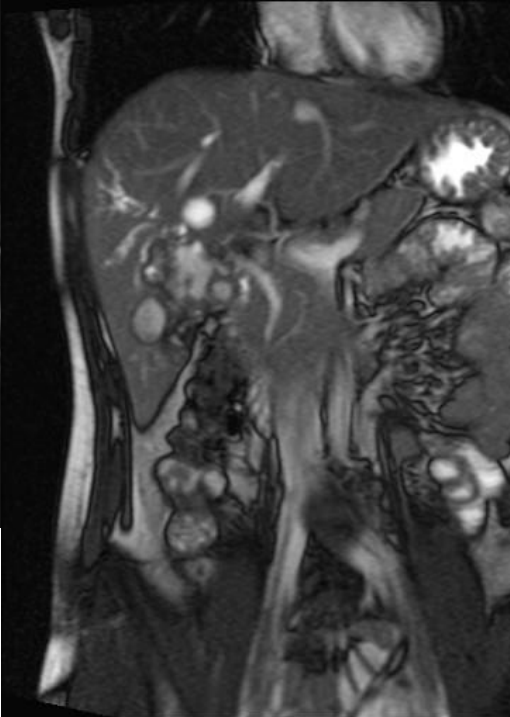
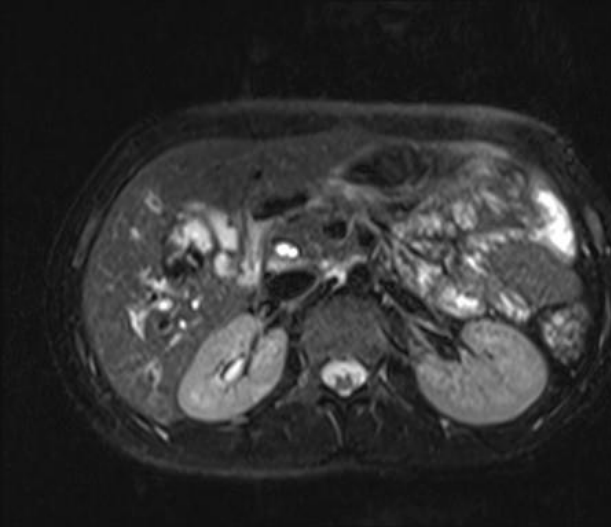
## 2. Leber, Gallenblase/-wege, Pankreas



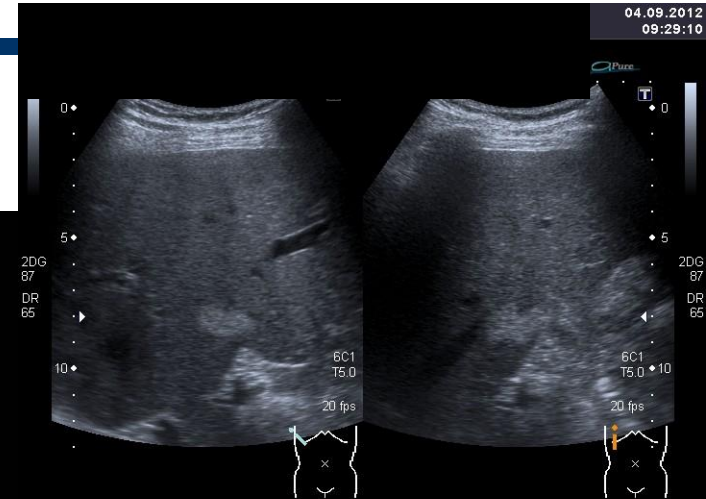
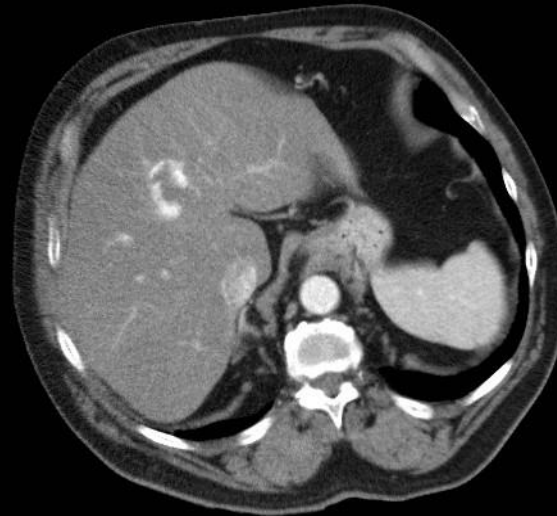




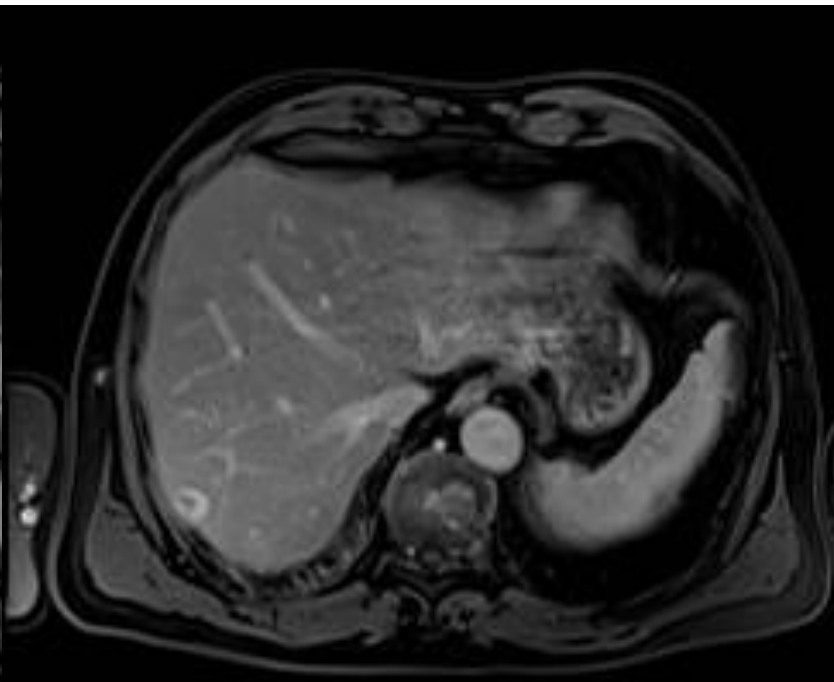
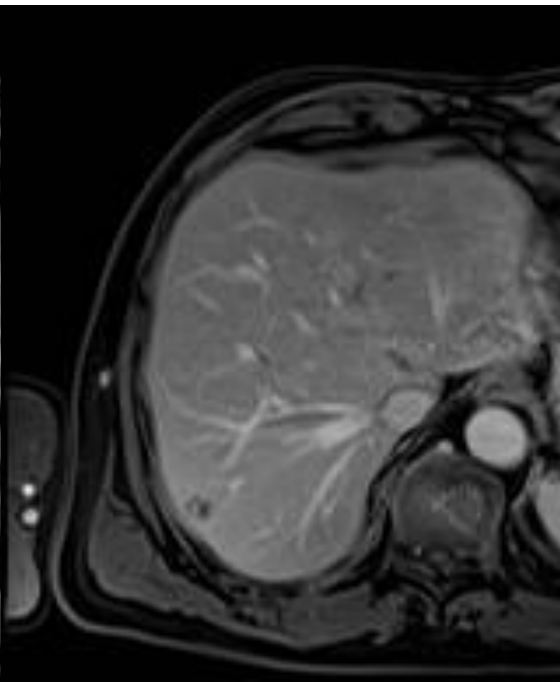
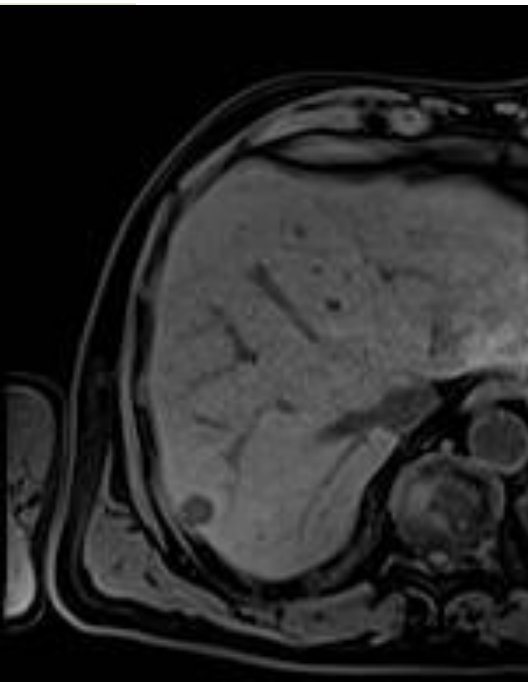
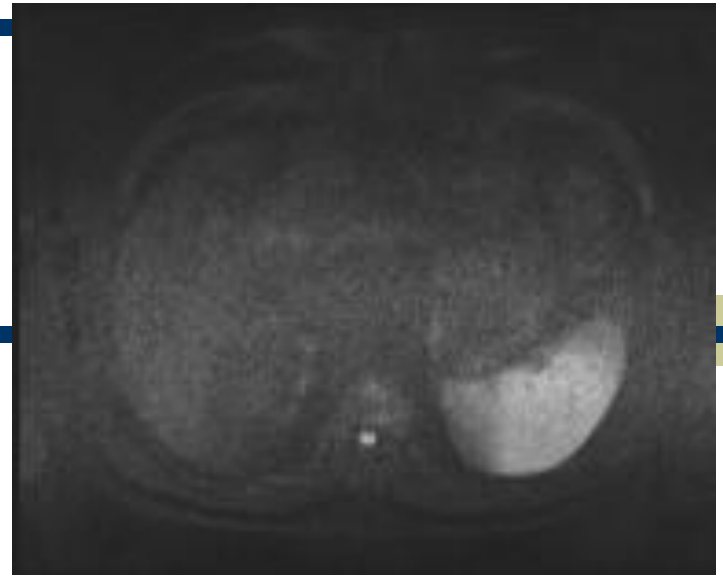
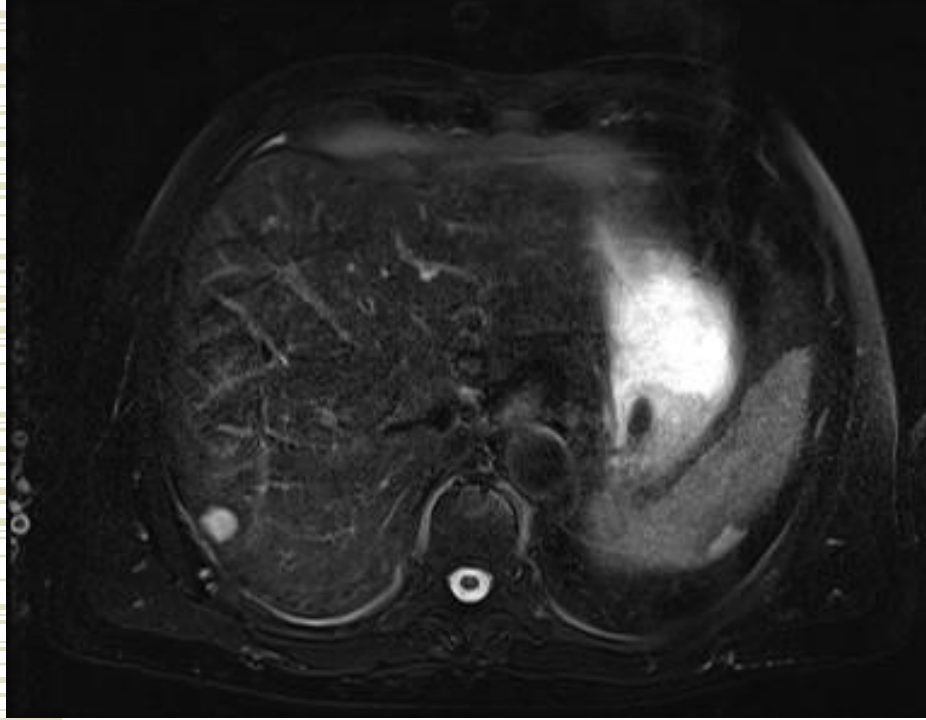




# Lebertumore

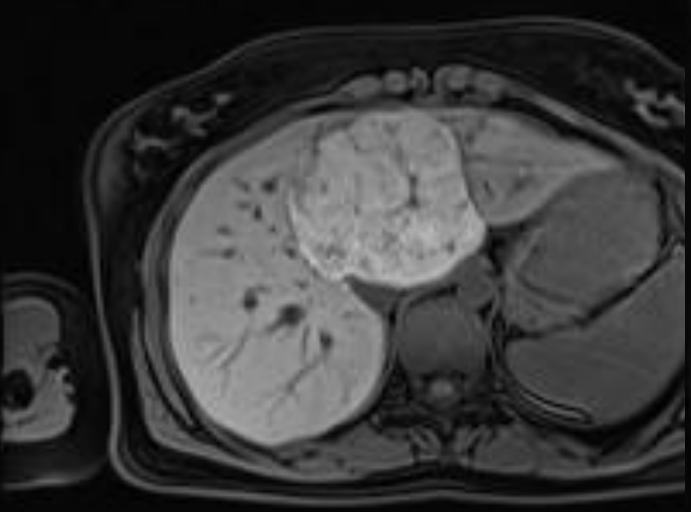
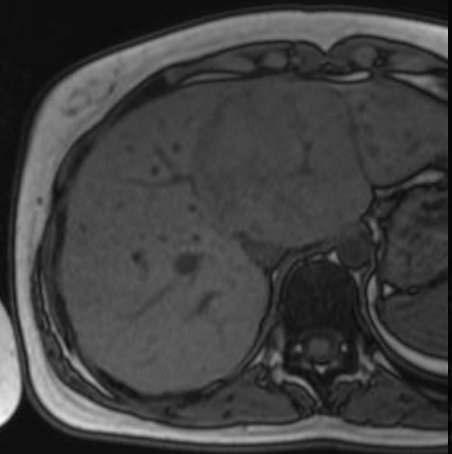
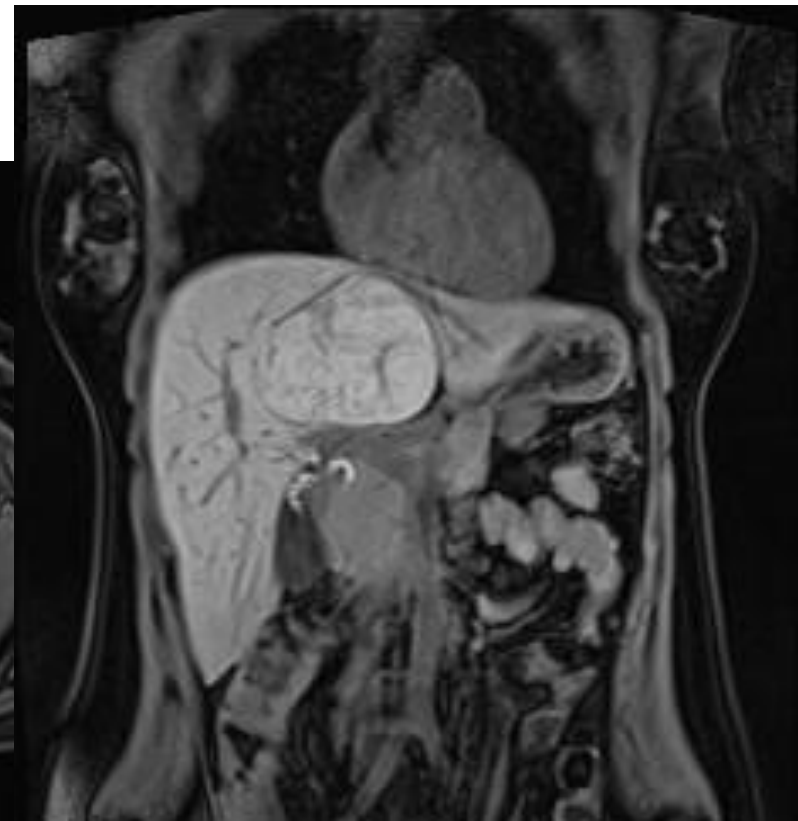
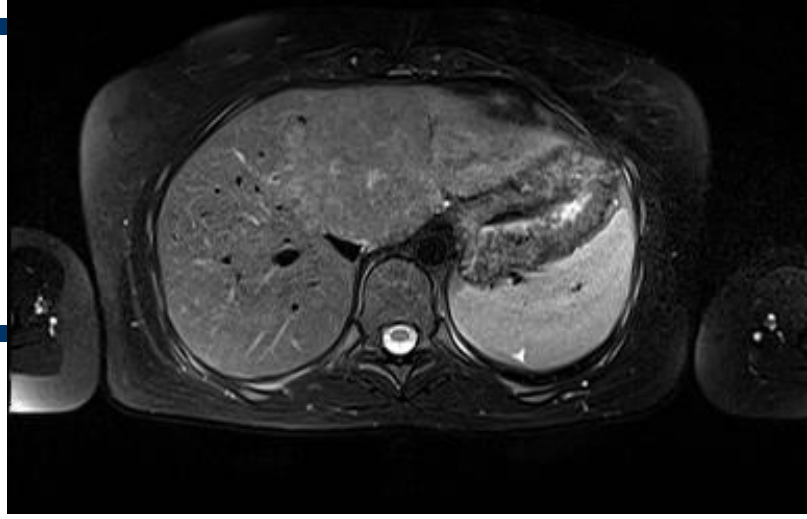
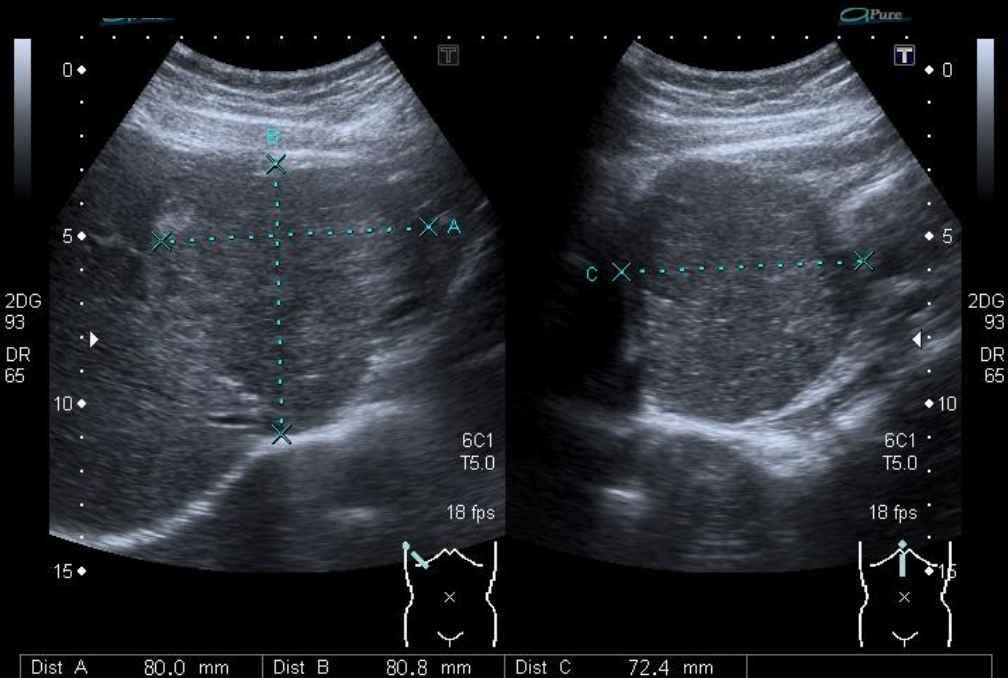






en

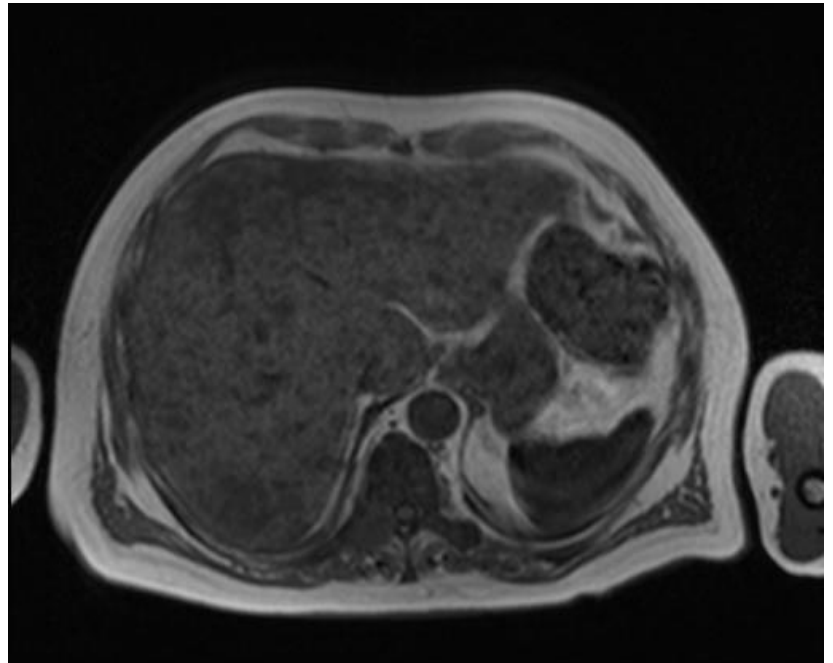
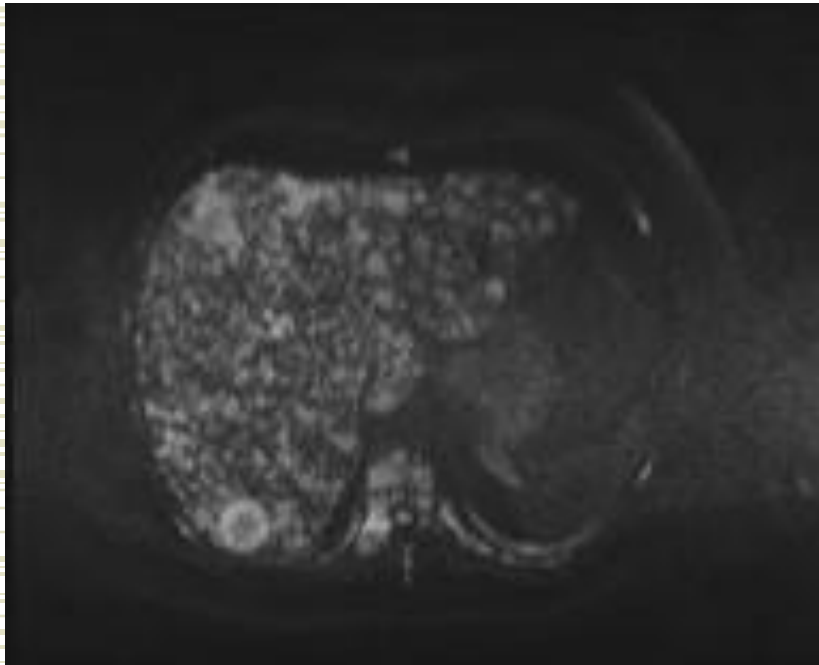
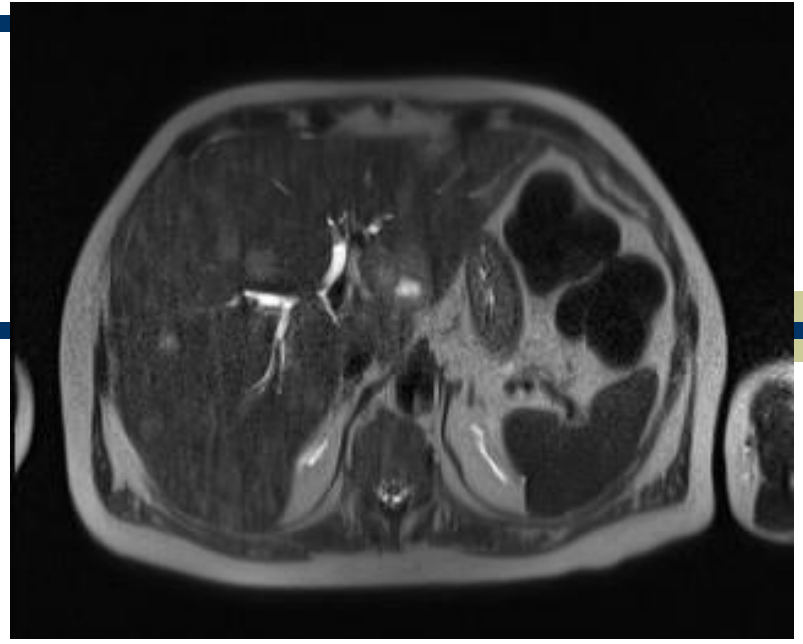
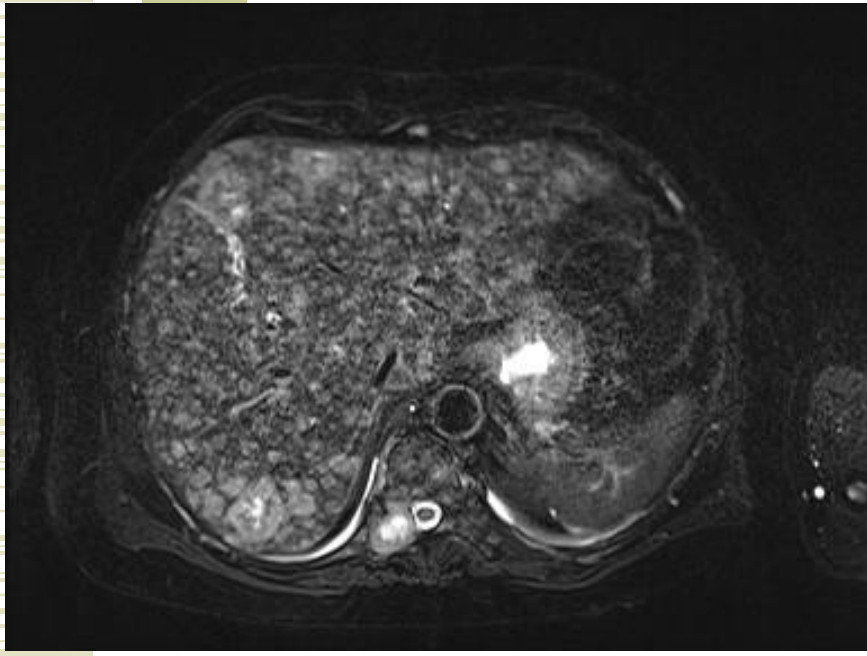
07.09.2012  
10:11:48



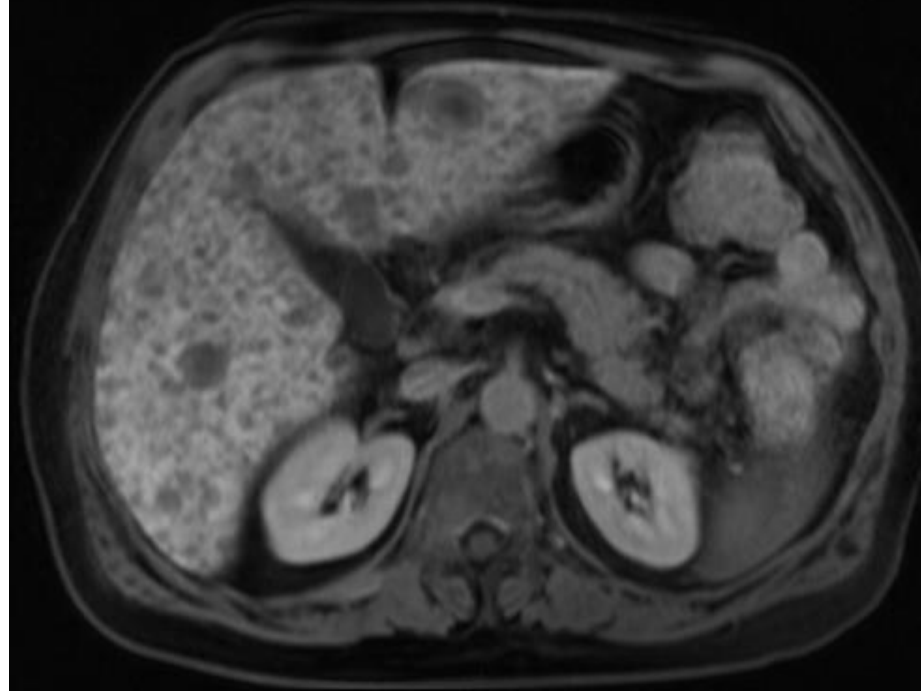
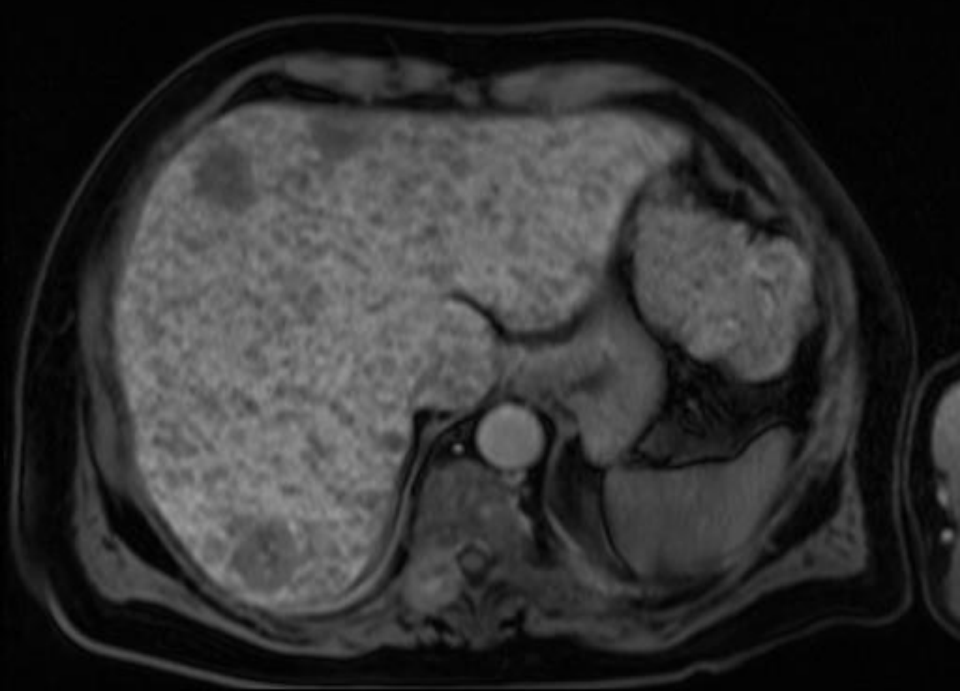
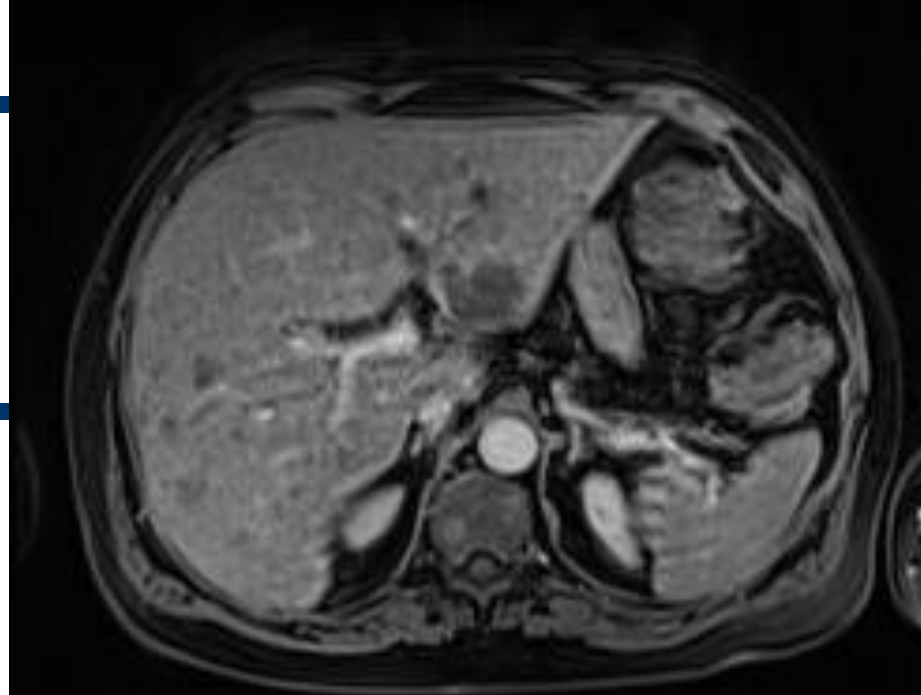
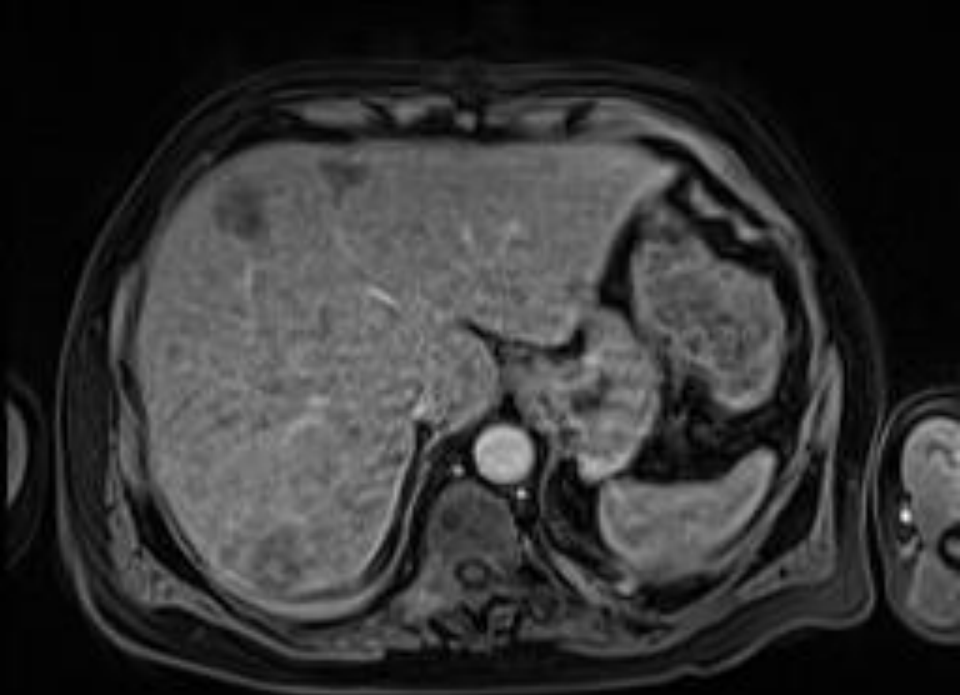


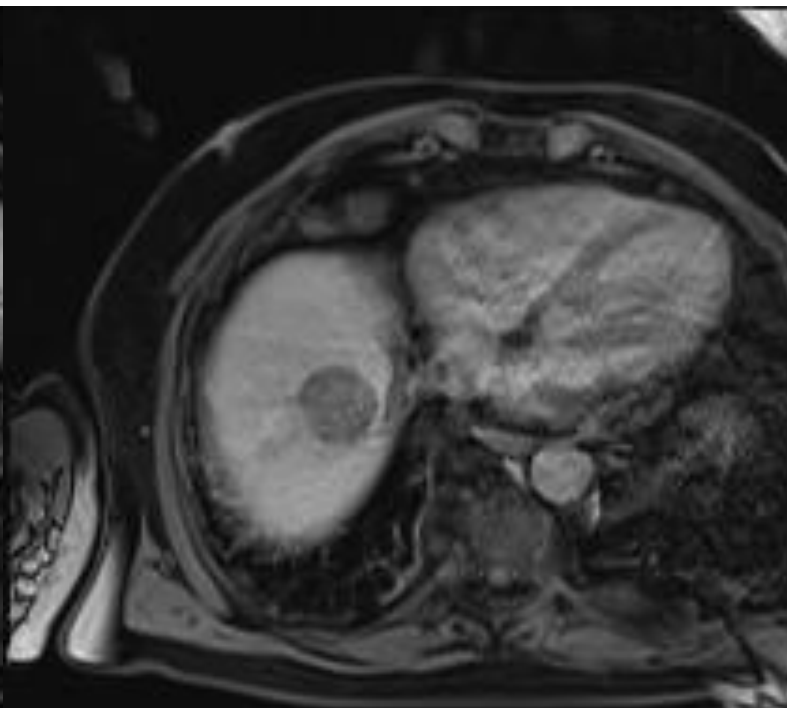
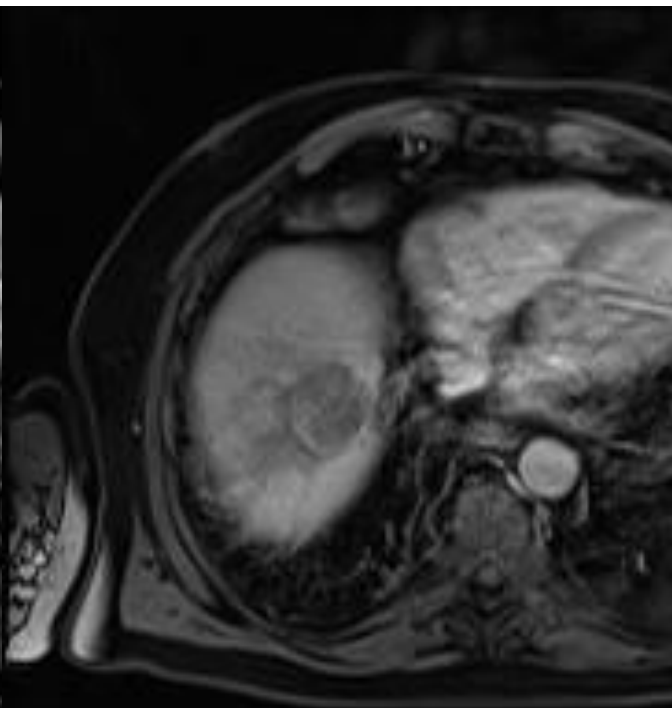
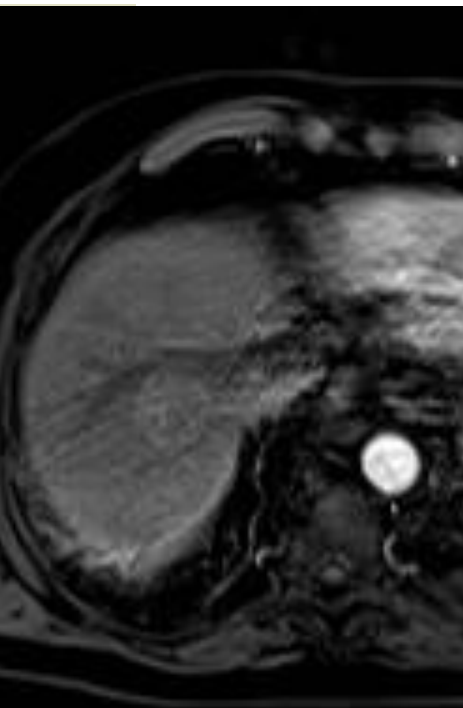
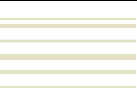
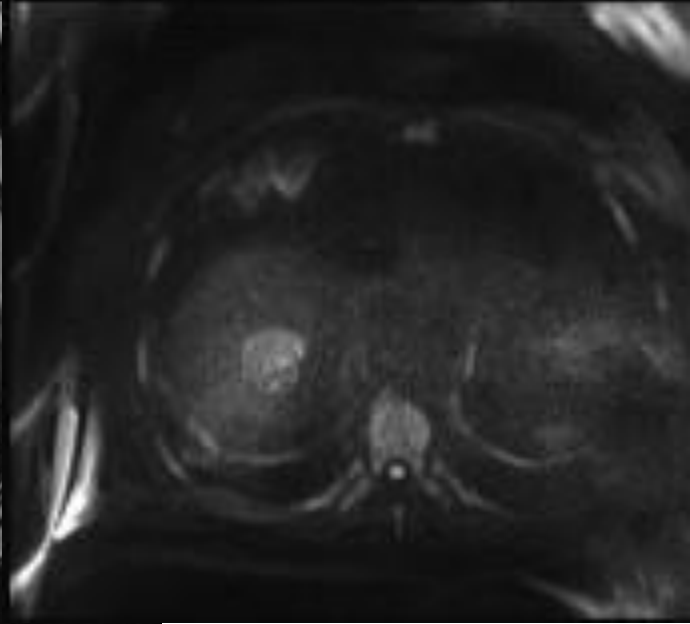
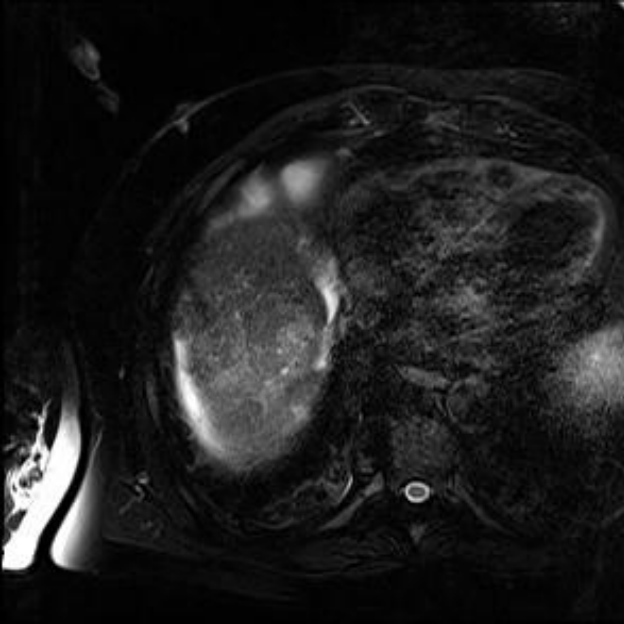
10 M  
A

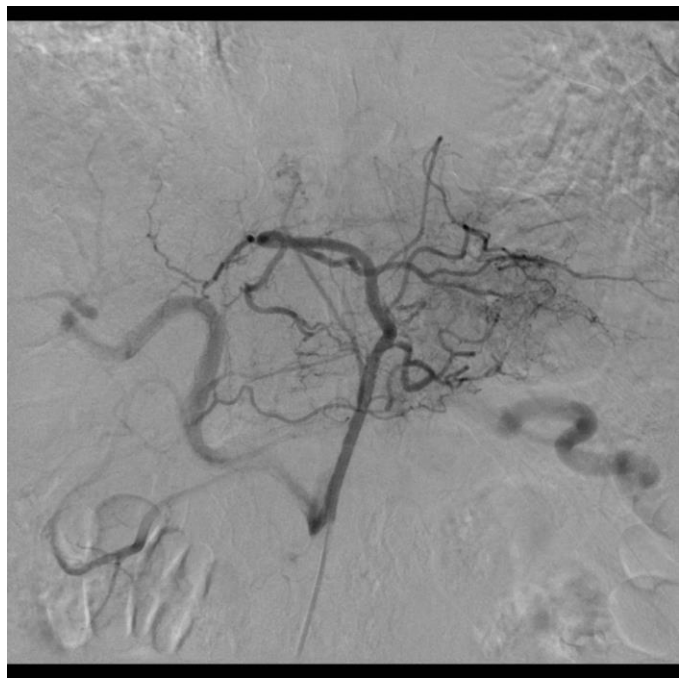
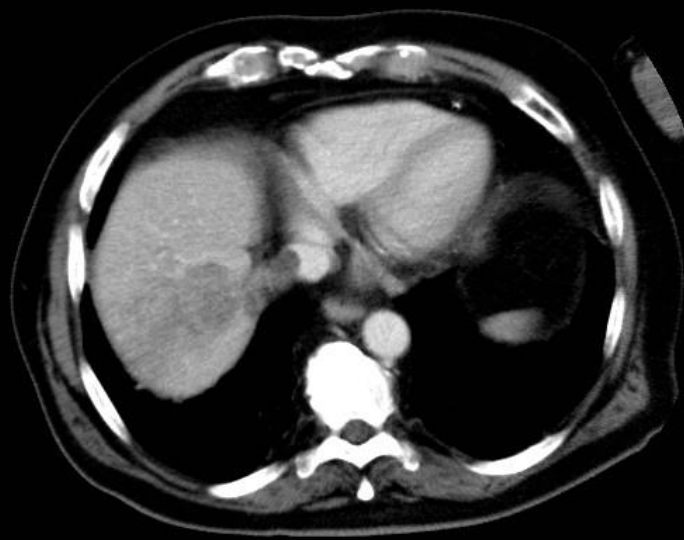
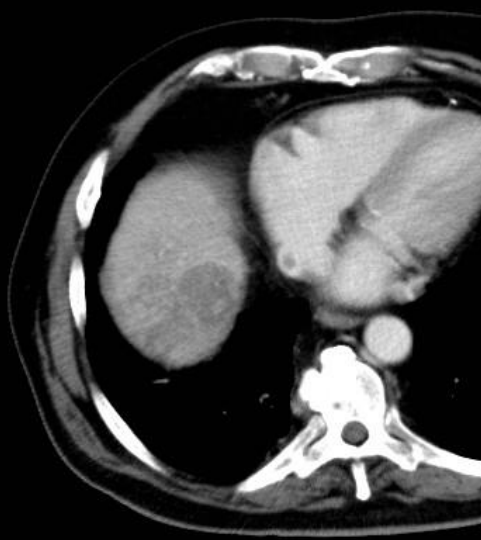




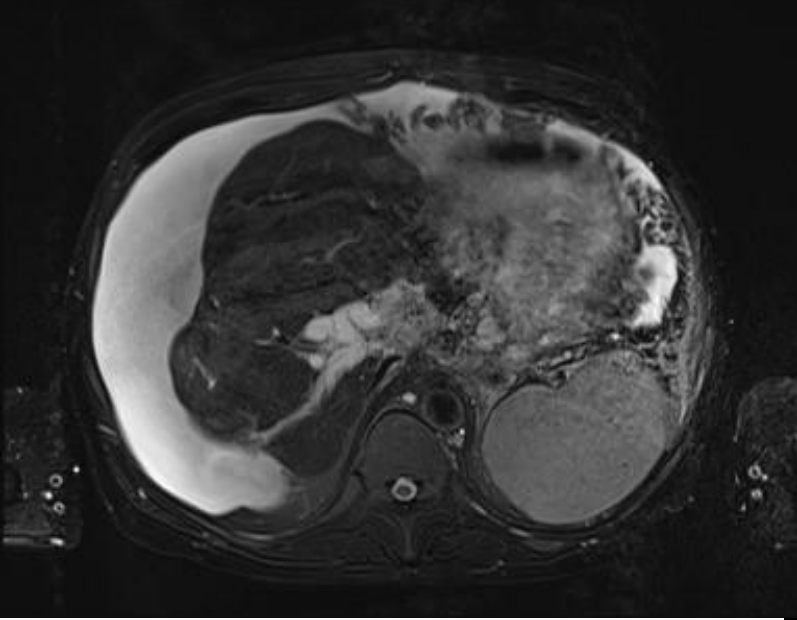
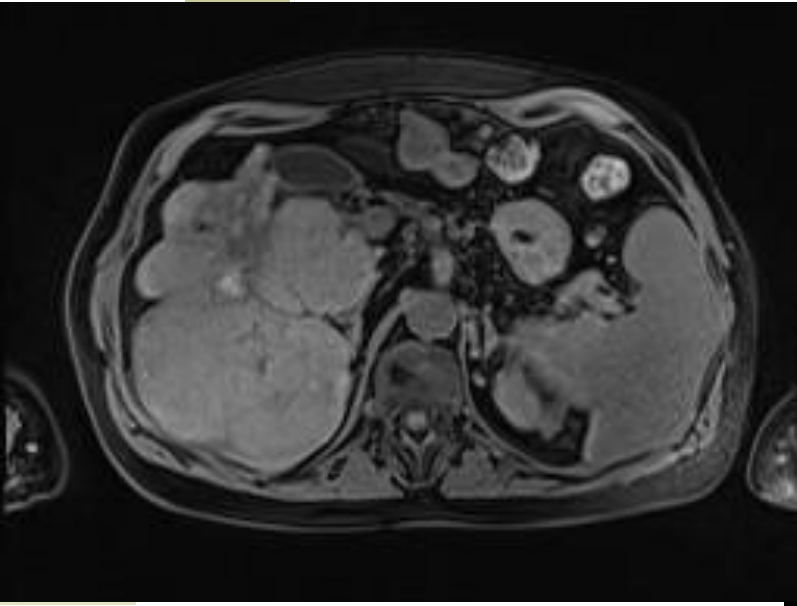






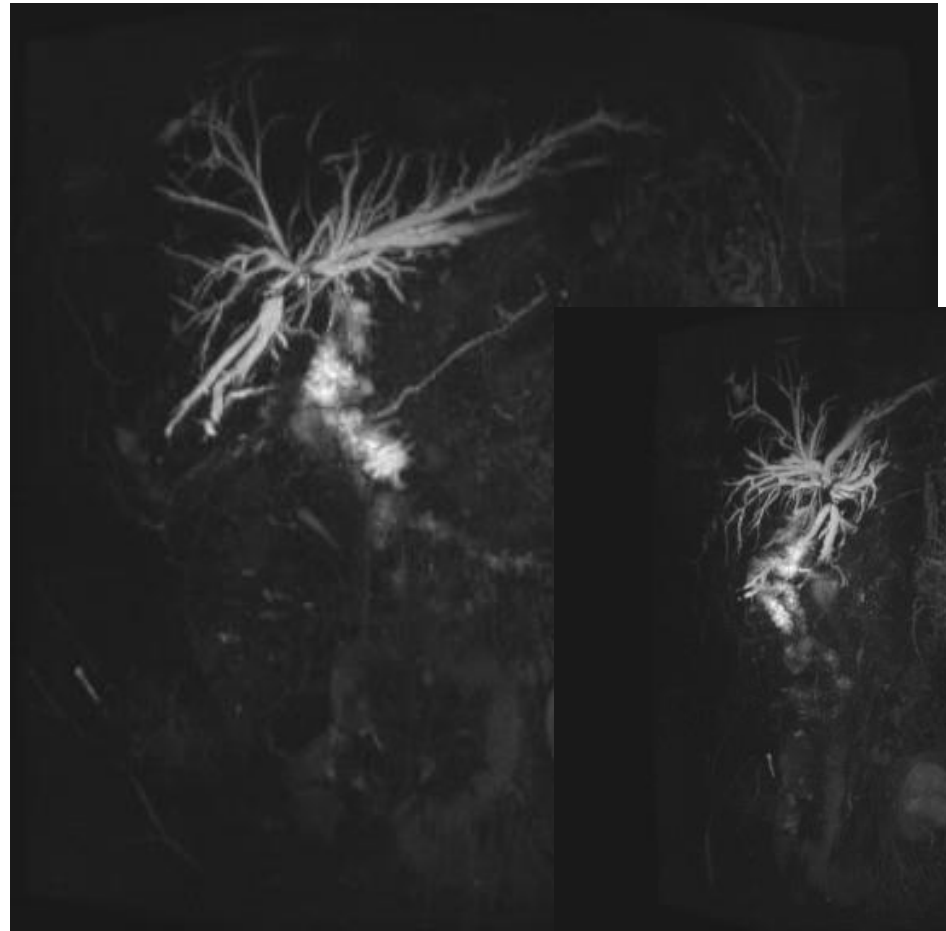
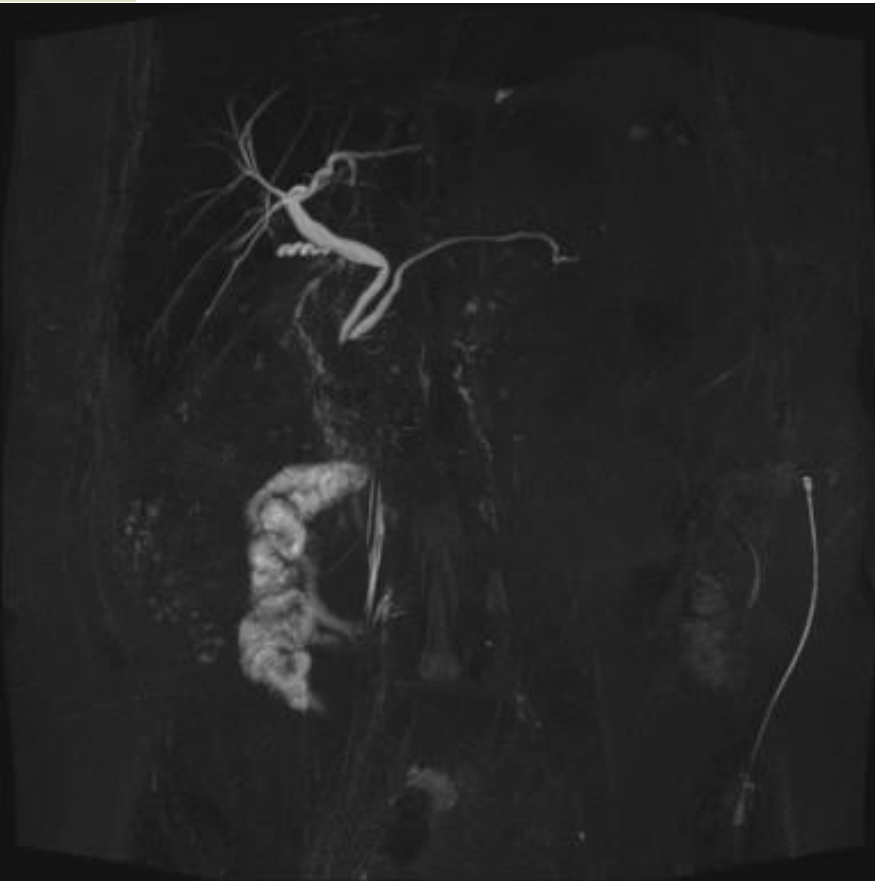


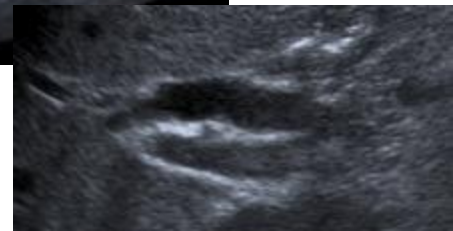






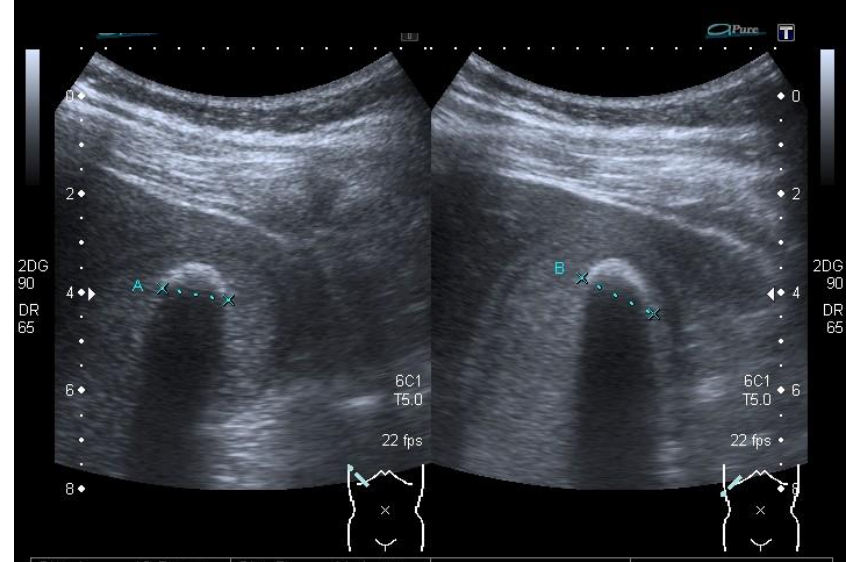
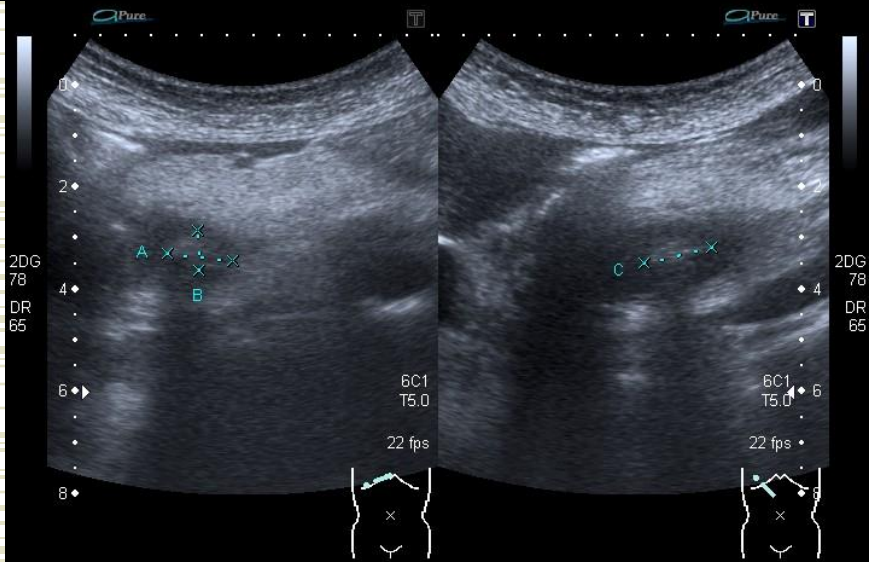
# Gallenwege/ Gallenblase

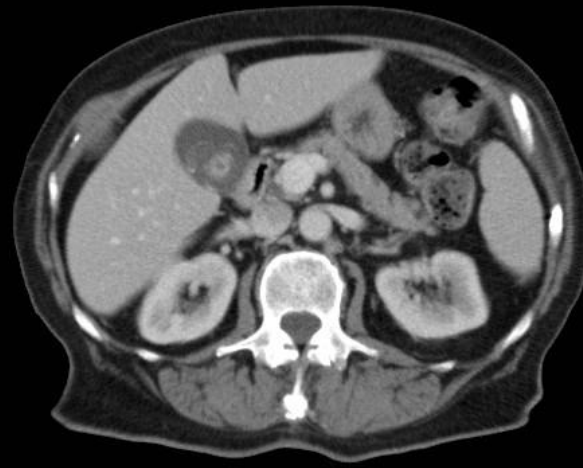
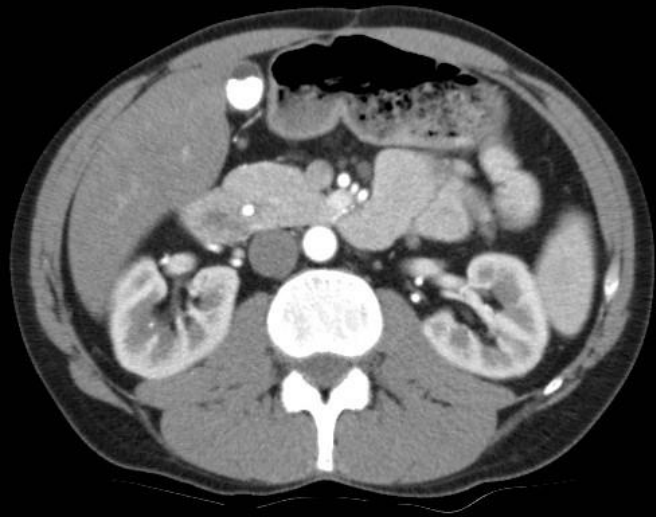




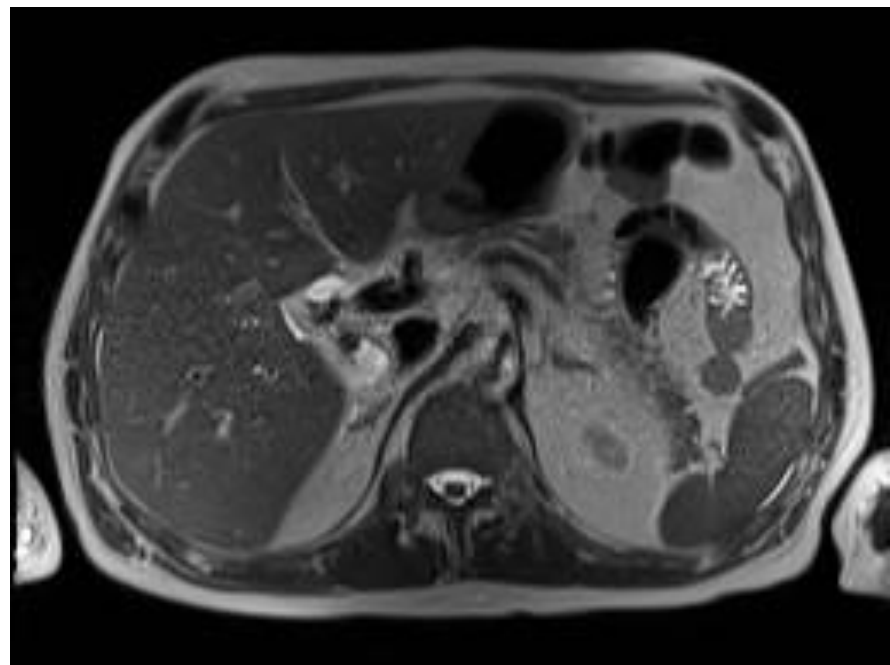
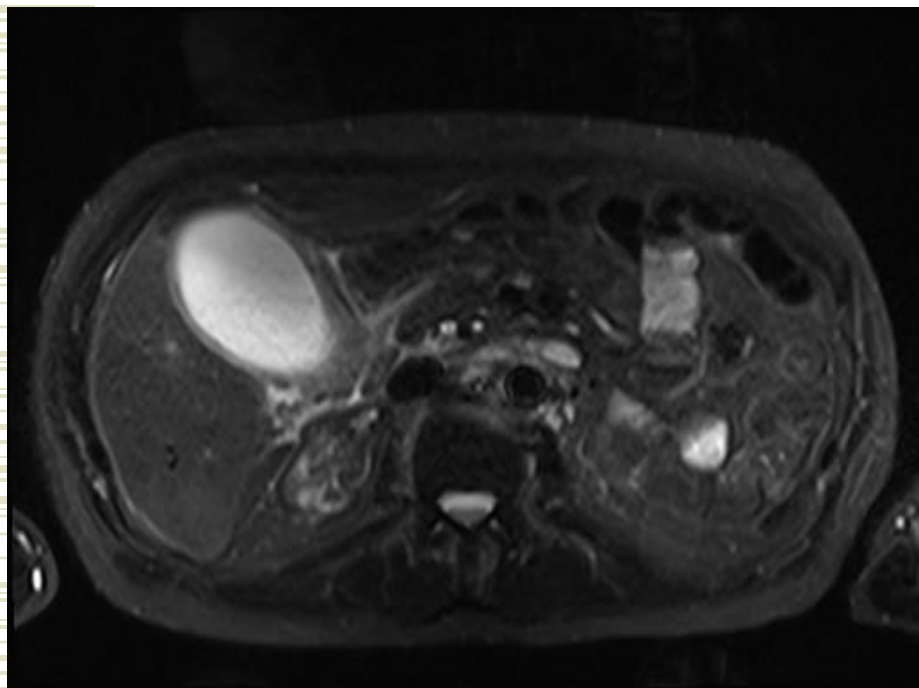
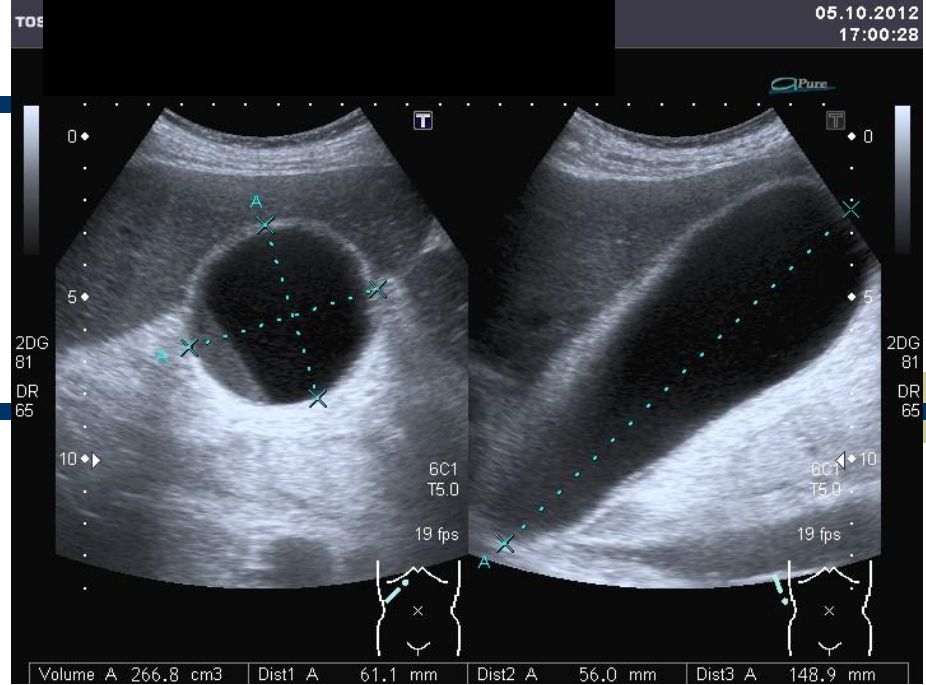
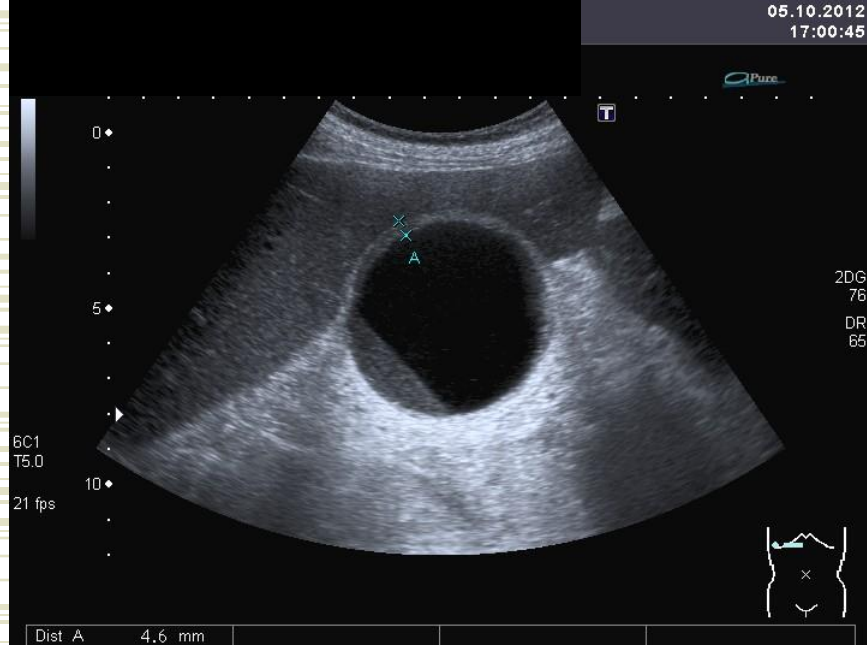
23.04.2012  
12:03:32

17.09.2012  
13:33:56

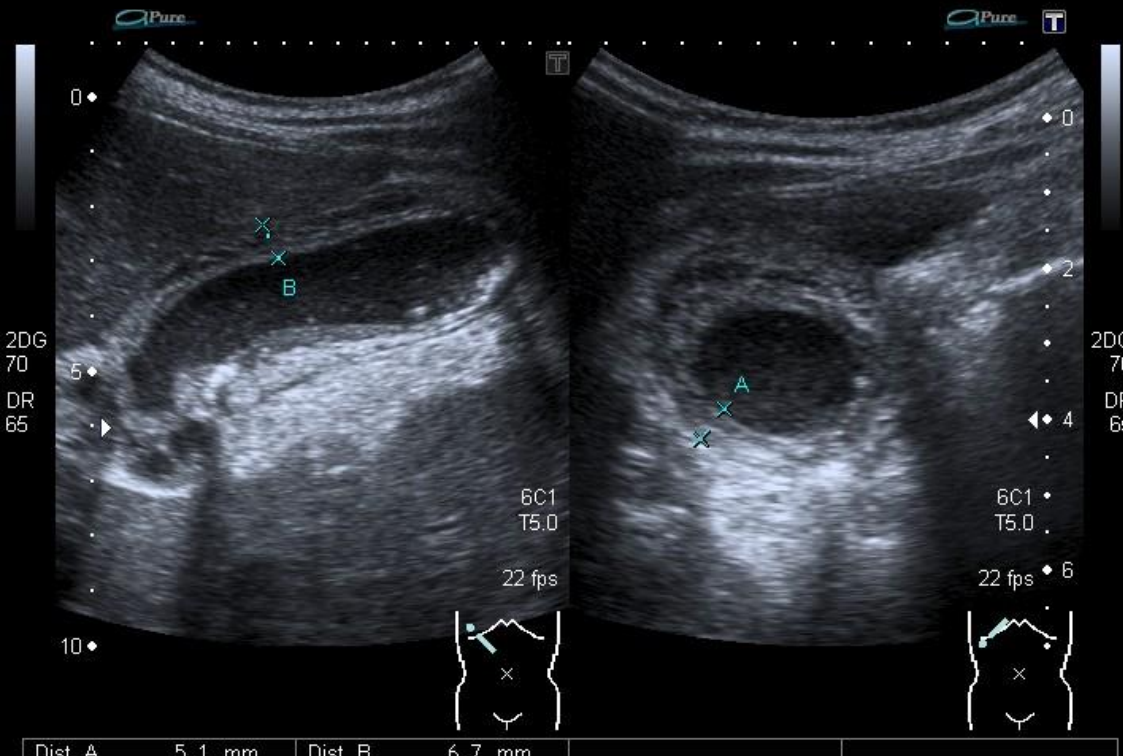




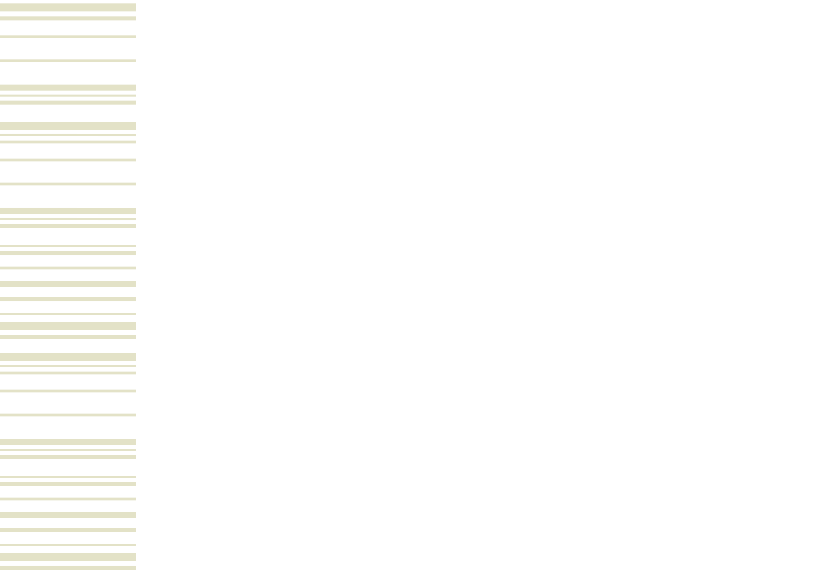
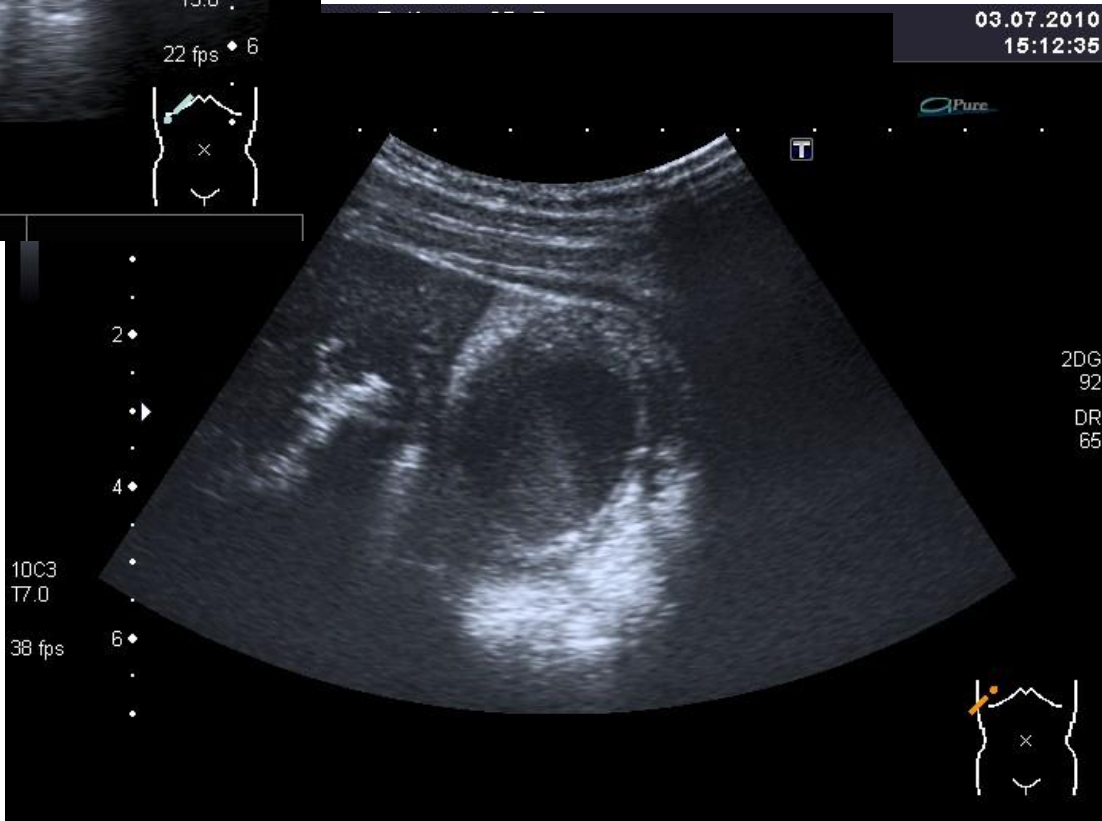


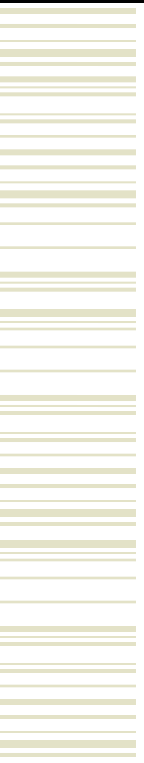
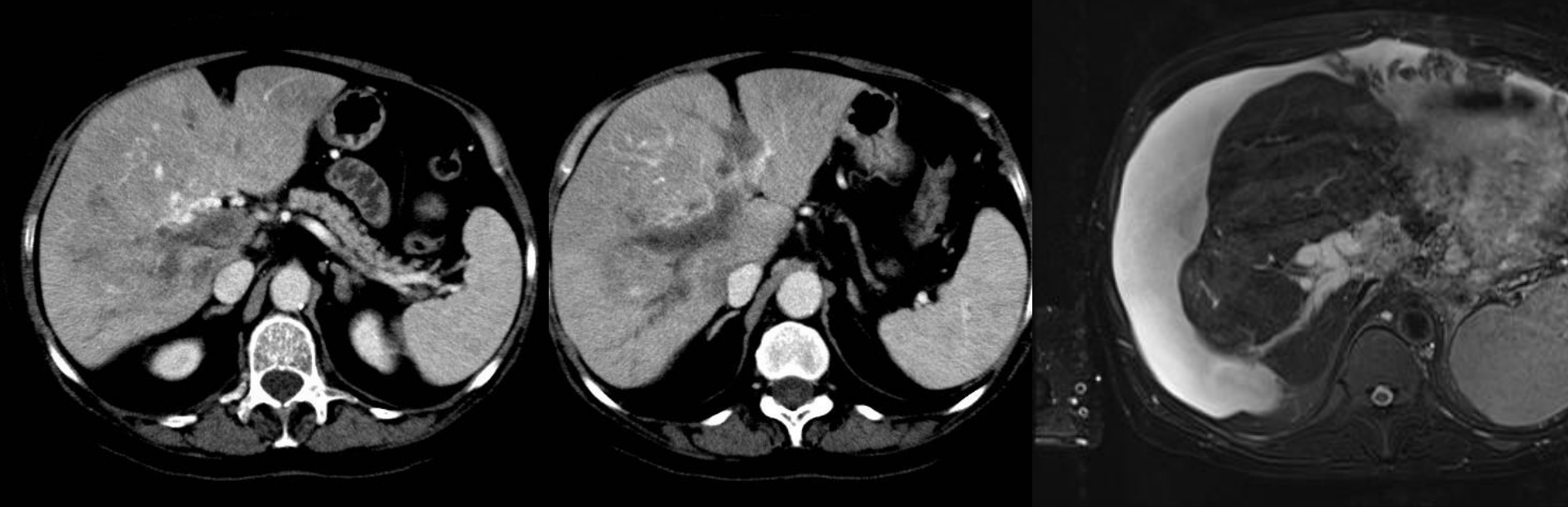


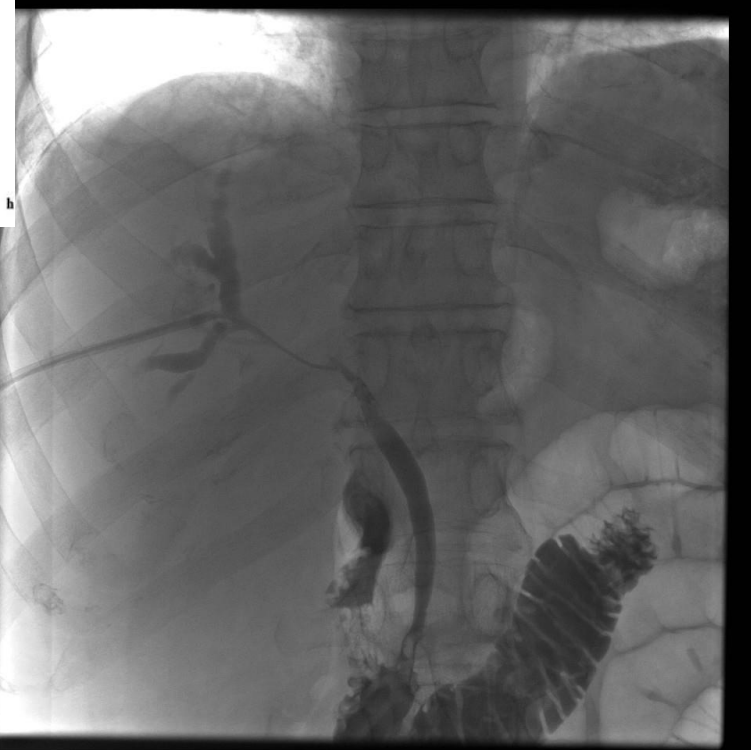
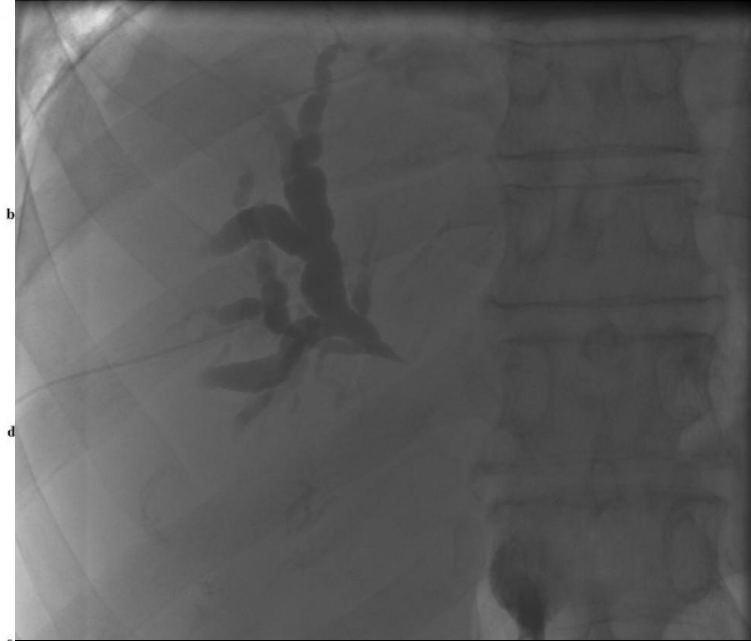
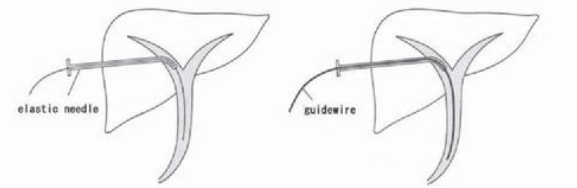
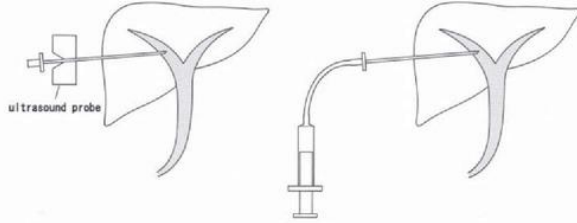




Dist A	5.1 mm	Dist B	6.7 mm
--------	--------	--------	--------



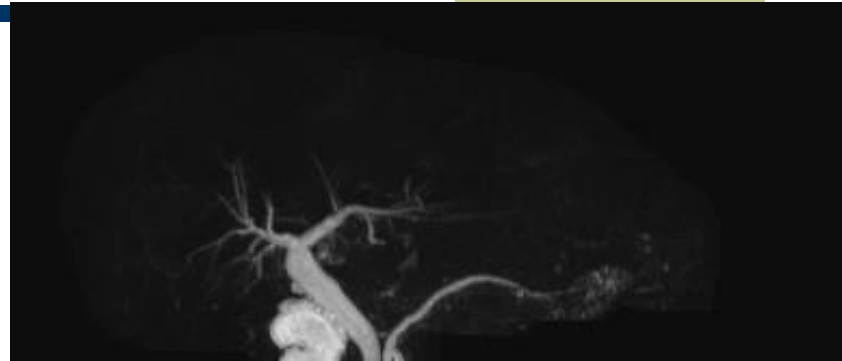




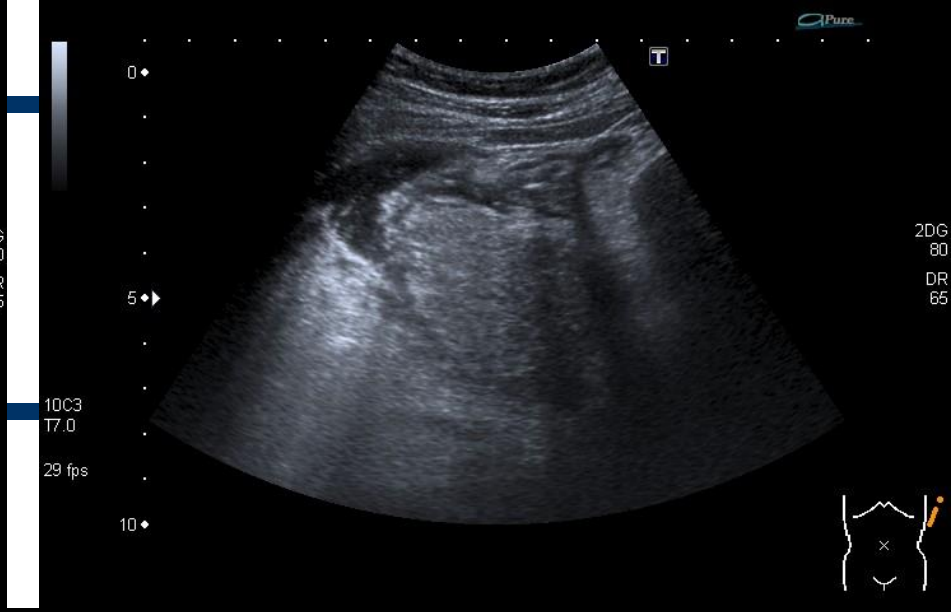
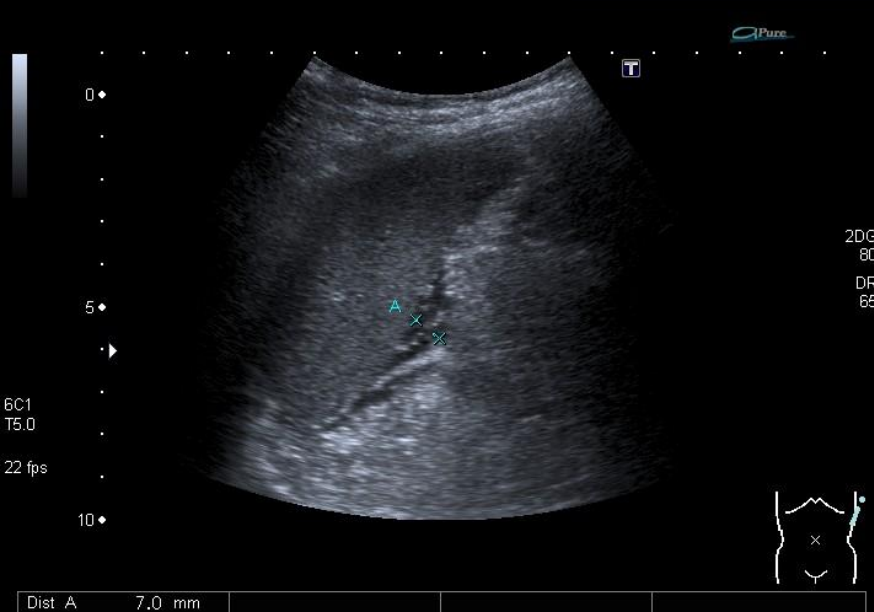
Mehr Cartoons unter:  
[www.rippenspreizer.com](http://www.rippenspreizer.com)



# Pankreas

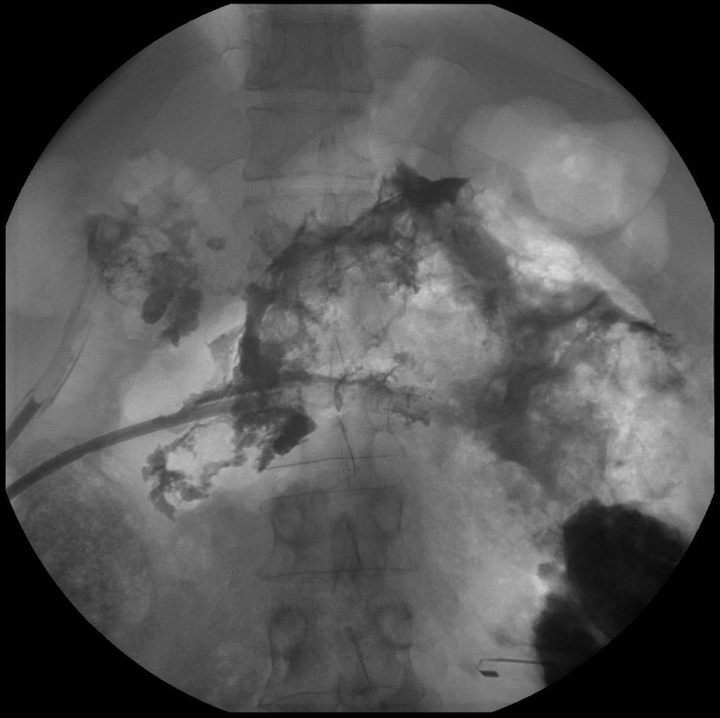
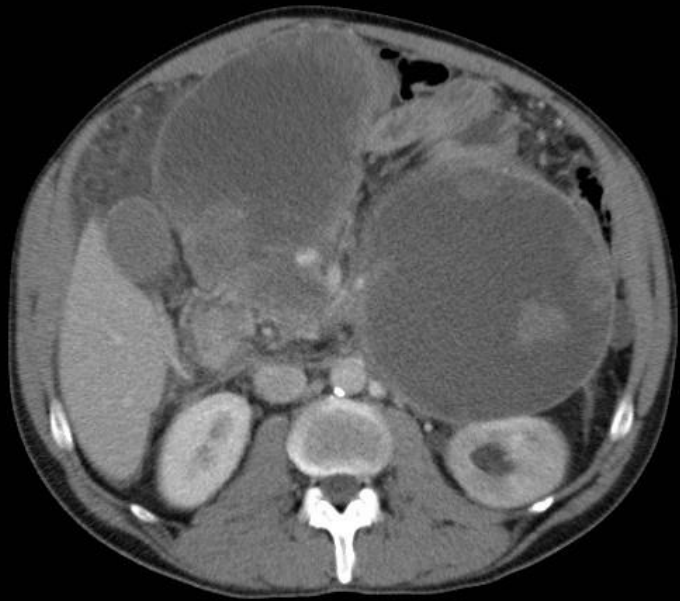
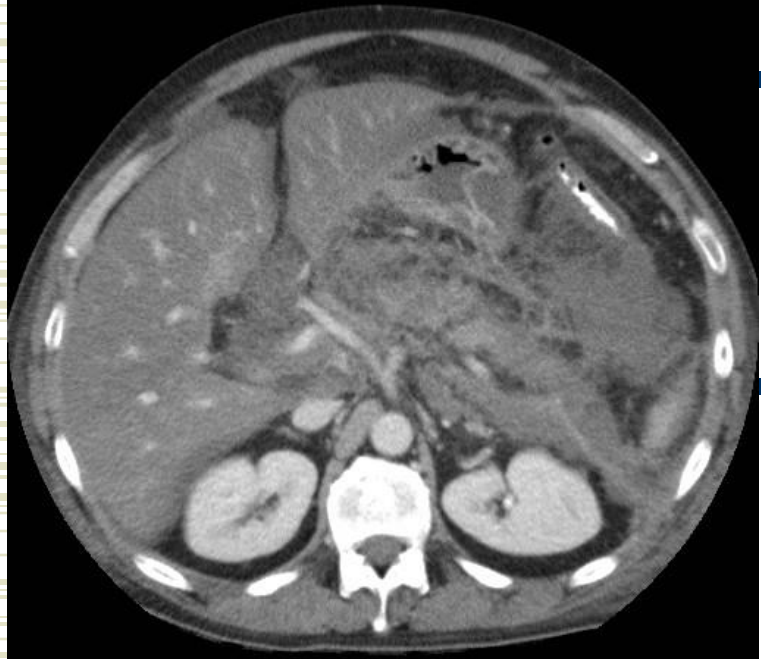






Dist. A 7.0 mm





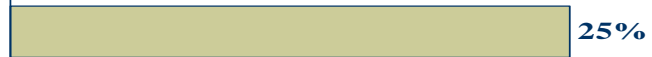


# Bildfrage 1:



1. Hämangiom

1



2. HCC

2



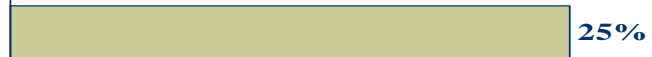
3. Dünndarmileus

3



4. Freie Luft

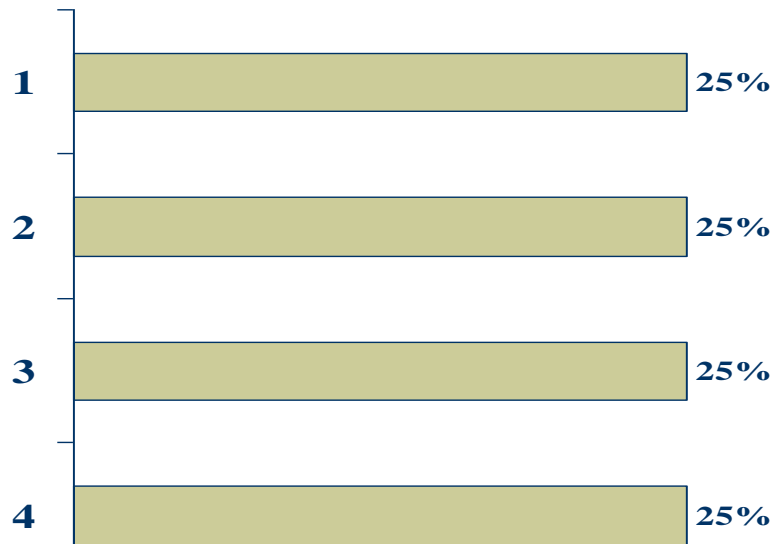
4





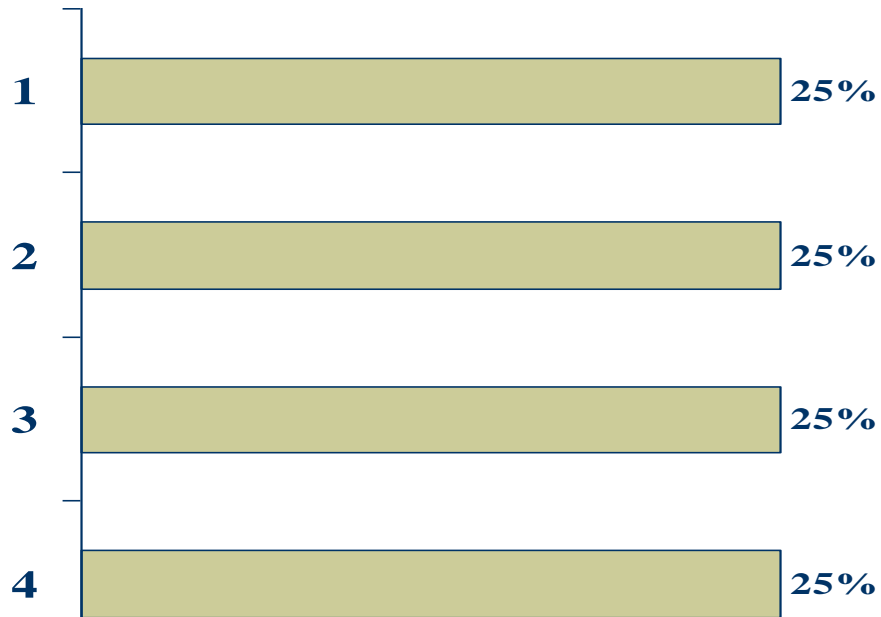
# Bildfrage 2:

1. Paralytischer Ileus
2. Dickdarmileus
3. Dünndarmileus
4. Coloncarzinom



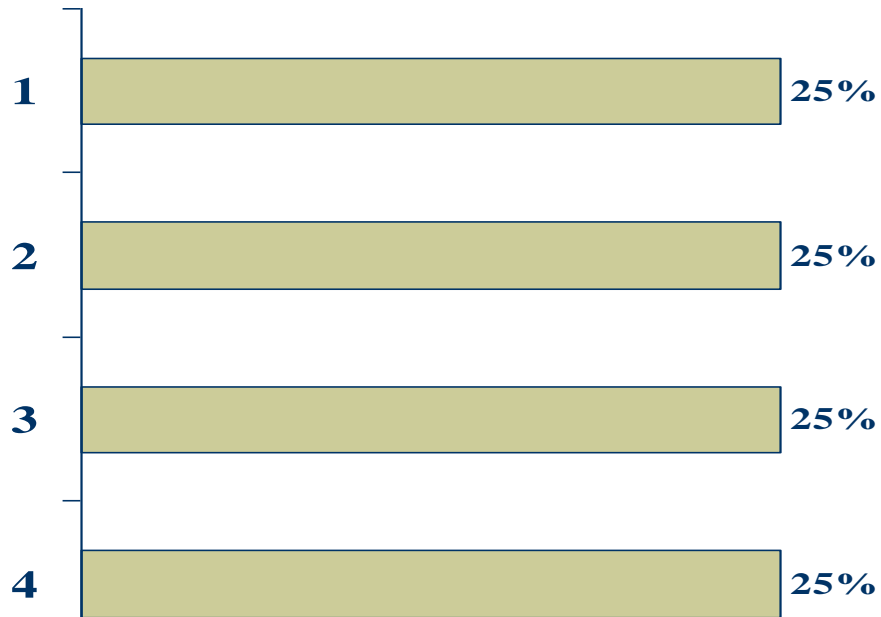
# Bildfrage 3:

1. Colitis ulcerosa
2. M- Krohn
3. Coloncarzinom
4. Dickdarmileus



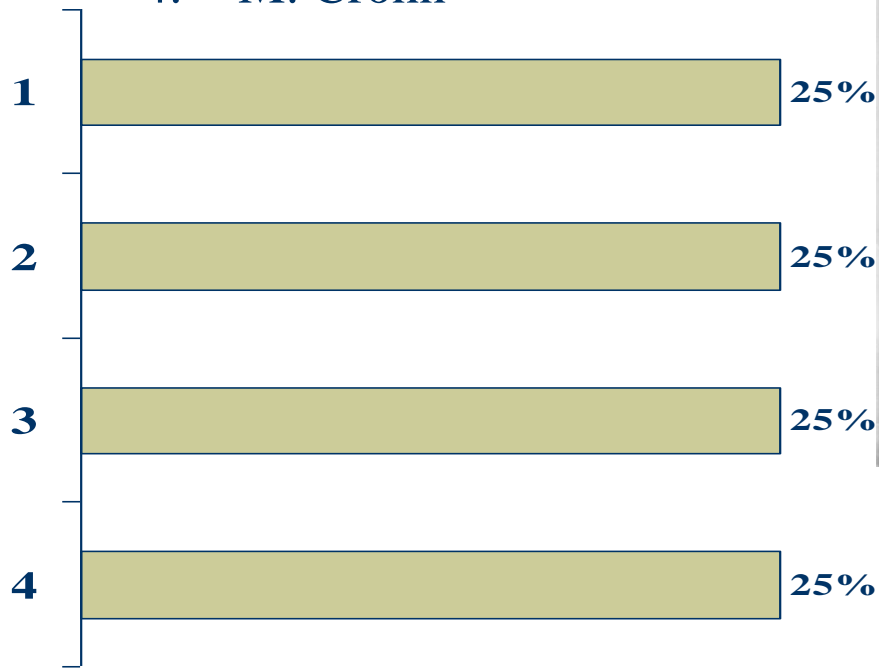
# Bildfrage 4:

1. Klatskin-Tumor
2. Leberzyste
3. Hämangiom
4. Gallensteine



# Bildfrage 5:

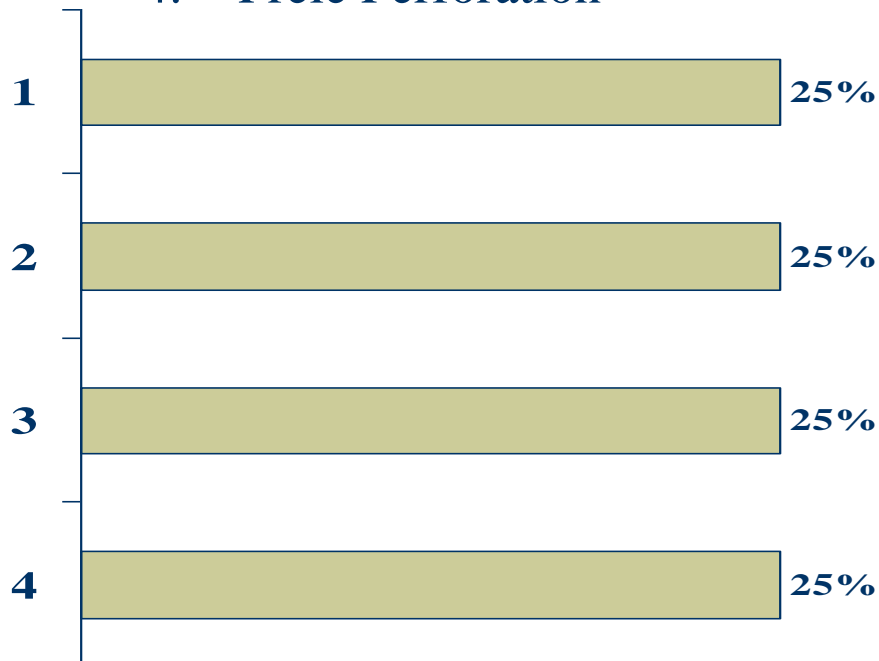
1. Dünndarmileus
2. Colitis ulcerosa
3. Freie Perforation
4. M. Crohn





# Bildfrage 6:

1. Pankreaskoptumor
2. Exsudative Pankreatitis
3. Magenculus
4. Freie Perforation



# Bildfrage 7:

MRT mit Primovist (Spätaufnahme):

1. Freie Perforation
2. Magenculus
3. FNH
4. Exsudative Pankreatitis

