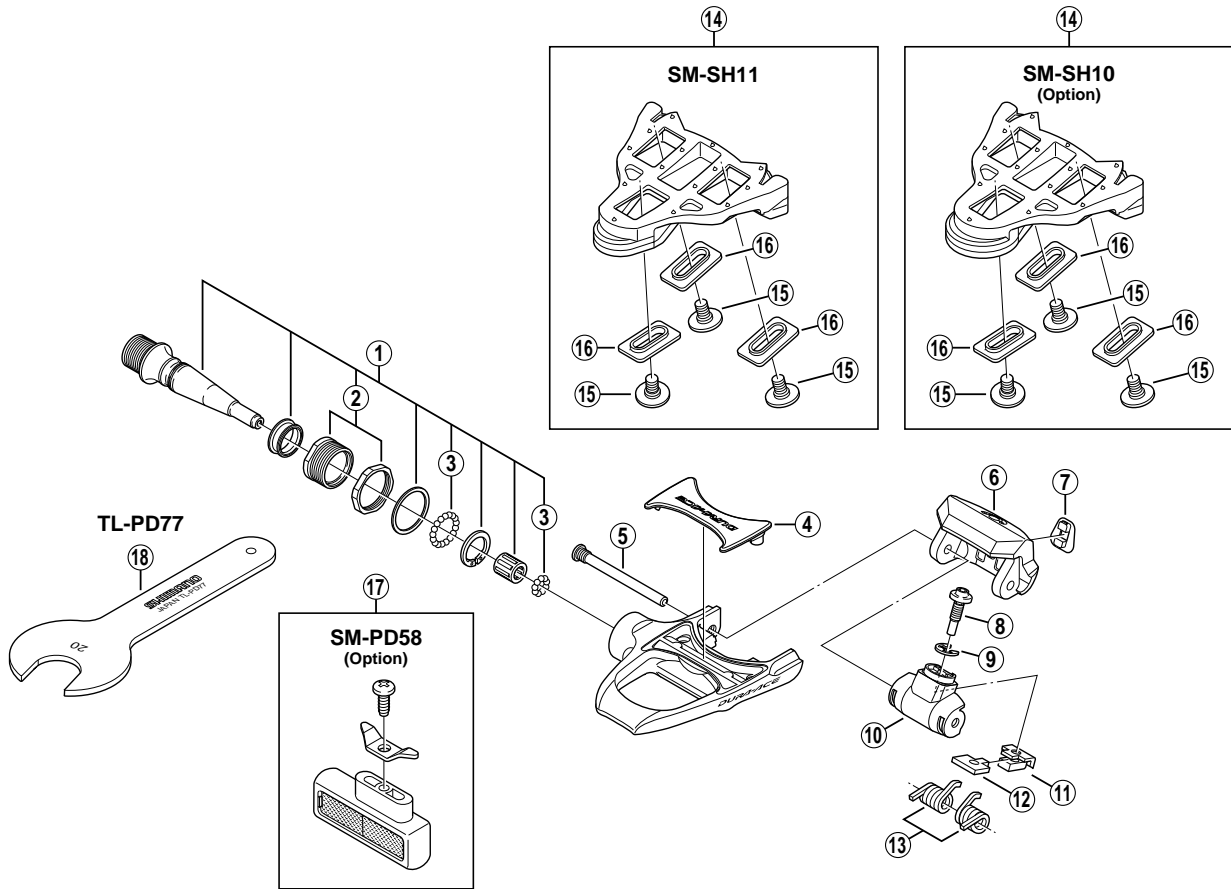


# DURA-ACE SPD-SL Pedals PD-7800



**Note:** Because the threaded part of the binding pin (item no. ⑤) has been coated with screw locking adhesive, after removal, a new binding pin should be used in place of the old pin.

ITEM NO.	SHIMANO CODE NO.	DESCRIPTION
1	Y-42U 98030	Pedal Axle Assembly (Right / B.C.9/16" x 20T.P.I.)
	Y-42U 98040	Pedal Axle Assembly (Left / B.C.9/16" x 20T.P.I.)
2	Y-42X 98060	Bolt & Lock Nut (Right)
	Y-42X 98070	Bolt & Lock Nut (Left)
3	Y-41N 98030	Steel Ball (3/32") 62 pcs.
4	Y-42V 03000	Body Cover
5	Y-426 10300	Binding Pin
6	Y-42U 02000	Binding
7	Y-42U 10200	Indicator
8	Y-45F 04100	Spring Adjustment Bolt
9	Y-42U 16000	Adjust E-Ring
10	Y-42U 11300	Spring Cover
11	Y-42U 07000	Adjust Plate Cover
12	Y-42U 05000	Adjust Plate
13	Y-42U 98050	Spring (2 pcs.)
14	Y-42U 98010	SM-SH11 Cleat Set (Self-aligning mode / Pair / M5 x 8 mm)
	Y-42U 98020	SM-SH10 Cleat Set (Fixed mode / Pair / Option / M5 x 8 mm)
15	Y-42U 14200	Cleat Fixing Bolt (M5 x 8 mm / 1 pc.)
	Y-42U 98060	Cleat Fixing Bolt (M5 x 13.5 mm / 6 pcs. / Option)
* 16	Y-42U 15000	Cleat Washer (Black / 1 pc.)
	Y-42U 15010	Cleat Washer (Silver / 1 pc.)
17	Y-40R 98070	SM-PD58 Reflector Unit (Pair / Option)
	Y-40R 98080	SM-PD58 Reflector Unit (AS / Pair / Option)
18	Y-400 01100	TL-PD77 Spanner for Lock Nut

0508-2250A