

SERVICE INSTRUCTIONS

SL-6401-8 SL-6400

Shifting lever

For proper and safe performance, read and follow these instructions carefully.

Type

SL-6401-8: SIS type (8-speed)/with SIS-friction select mechanism

SL-6400: SIS type (6-speed, 7-speed)/with SIS-friction select mechanism

For 8-speed

For 6-speed or 7-speed



Note

For SIS use, be sure to use the following combination:

	8-speed	7-speed	6-speed
Shifting lever	SL-6401-8	SL-6400	SL-6400
Rear derailleur	RD-6401	RD-6400 RD-1055 RD-6401	RD-6400 RD-1055 RD-6401
Freehub	FH-6402-HG FH-7403	FH-6401-HG FH-1055-HG FH-6400	FH-6400
Cassette sprocket	CS-HG90-8	CS-HG90 CS-HG70 CS-6400-7	CS-6400-6
Chain	CN-HG90	CN-HG90 CN-HG70	CN-HG90 CN-HG70
Outer cable	Shimano SIS sealed cable		

- Because the high cable resistance of a frame with internal cable guides would impair the SIS function, this type of frame should not be used.
- SL-6401-8 and SL-6400 cannot be used in combination with the Dura-Ace rear derailleur.

Please note: specifications are subject to change for improvement without notice. (English)

SHIMANO

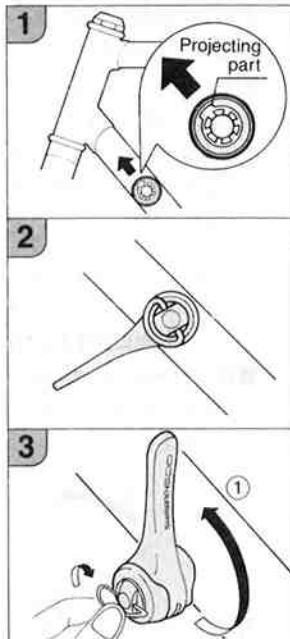
SHIMANO AMERICAN CORPORATION
One Shimano Drive, P.O. Box 19615, Irvine, California U.S.A. 92718 Tel. (714) 951-5003

SHIMANO (EUROPA) GmbH.
Kleinhülsen 1-3 4010 Hilden, Germany Tel. 02103 5005-0

SHIMANO INC.
3-77 Oimatsucho, Sakai, Osaka, Japan Tel. (0722) 23-3243

© May 1991 by Shimano Inc. P-74B XBC SHS Printed in Japan.

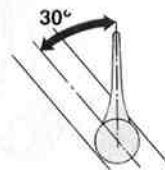
Installation of the lever for the front derailleur



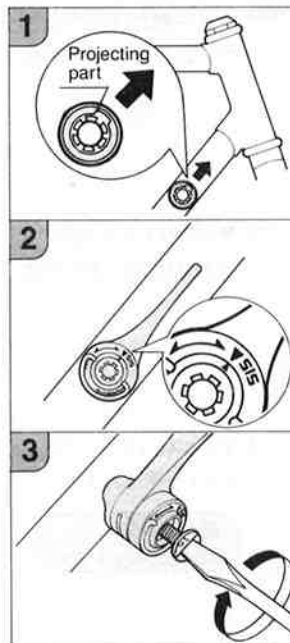
1. Set the projecting part of the lever axle cover so that it faces forward.
2. Set the lever.
3. Turn the lever in the direction of the arrow ①, and then tighten the lever-tightening bolt until the lever body cannot be returned by the force of the spring.

Note: Be sure to turn the lever in the direction of the arrow ①. Damage will result if it is turned in the opposite direction.

- When the setting is made to the low position, the lever rises 30° from the frame.



Installation of the lever for the rear derailleur



1. Set the projecting part of the lever axle cover so that it faces forward.

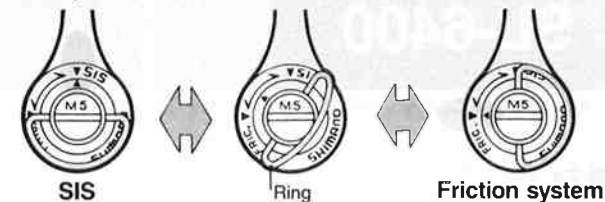
2. Install so the ▼ SIS mark and the red arrow ▲ are aligned.

3. Tighten the lever-tightening bolt by using a flat-tip (-) screwdriver.

Tightening torque:
25—30 kgfcm

SIS operation

Turn the ring and set to either SIS or friction. Be sure to turn the ring securely to the ▼ SIS or FRIC ▼ position.



Install by referring to the illustration as shown below.

