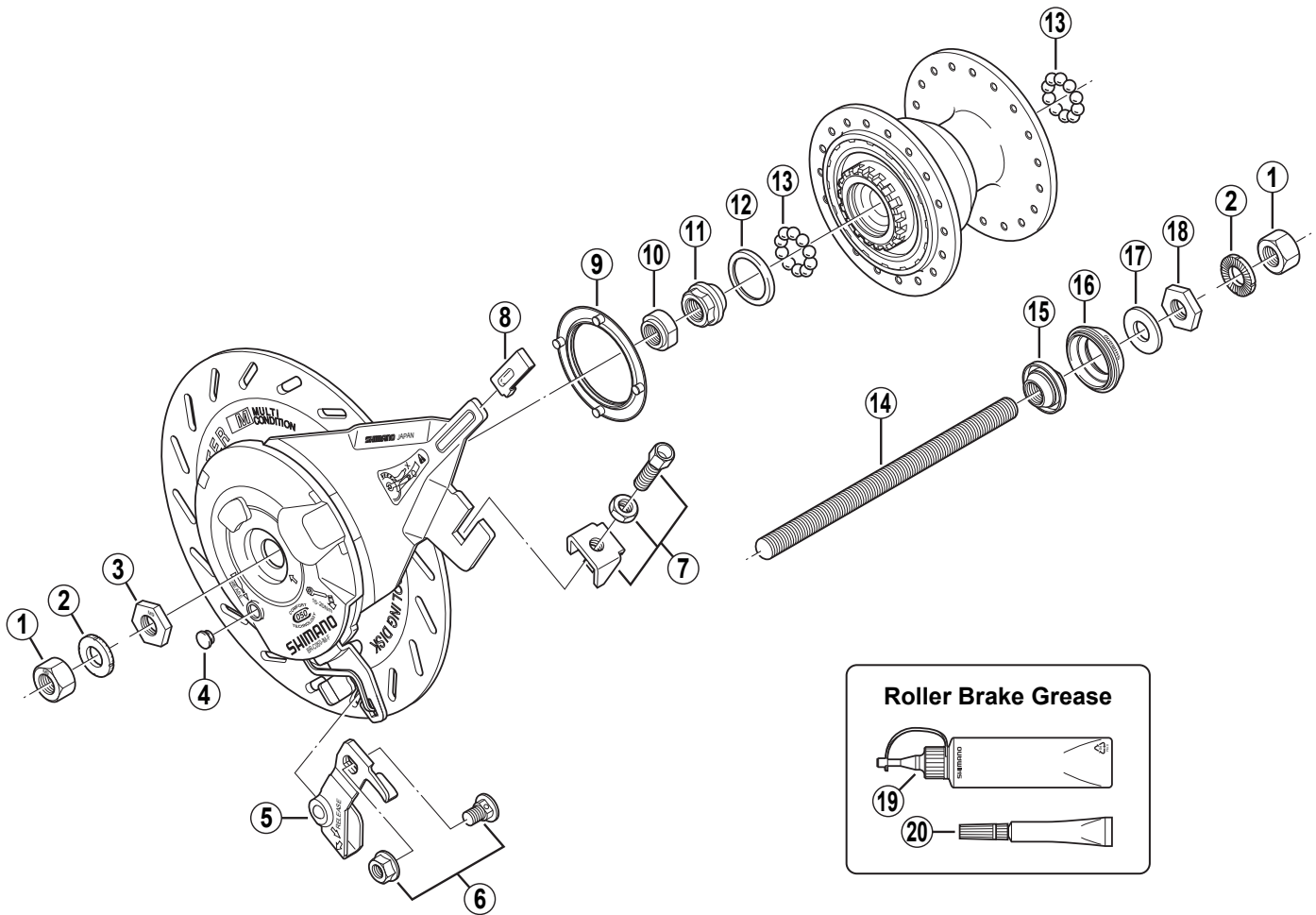


SHIMANO C-SERIES FRONT HUB w/Hi-Power Roller Brake

HB-C052-IM-F Front Hub

HB-C052C-IM-F Front Hub / For Children's Bicycles

BR-C050-IM-F Inter-M Brake



Q'TY	ITEM NO.	SHIMANO CODE NO.	DESCRIPTION
	1	Y-21D02000	Hub Nut (M9 x 8 mm)
	2	Y-21D03000	Washer (1.8 mm)
	3	Y-22V05210	Brake Unit Fixing Nut (3.5 mm / Black)
	4	Y-75F11000	Grease Hole Cap
	5	Y-75N98010	Link Unit
	6	Y-75Y98060	Inner Cable Fixing Bolt & Nut
	7	Y-75N98020	Brake Cable Adjusting Bolt Unit
	8	Y-75F16000	Brake Arm Plug (Option)
	* 9	Y-75P17000	Seal Ring for Brake
	* 10	Y-22V04000	Left Hand Cone Lock Nut (M9 x 7.1 mm)
	* 11	Y-22V03000	Left Hand Cone (M9 x 11.94 mm)
	* 12	Y-22V06000	Left Hand Dust Cap
	* 13	Y-00091210	Steel Ball (3/16") 20 pcs.
	* 14	Y-21D05200	Hub Axle (M9 x 140 mm)
	* 15	Y-21H98080	Right Hand Cone (M9 x 10.4 mm) w/Dust Cover
	* 16	Y-21H04000	Rubber Seal
	* 17	Y-21H10200	Right Hand Washer (2 mm)
	* 18	Y-21D04000	Right Hand Lock Nut (M9 x 3.5 mm)
	19	Y-04120400	Roller Brake Grease (Net. 100g)
	20	Y-04140020	Roller Brake Grease (Net. 10g)