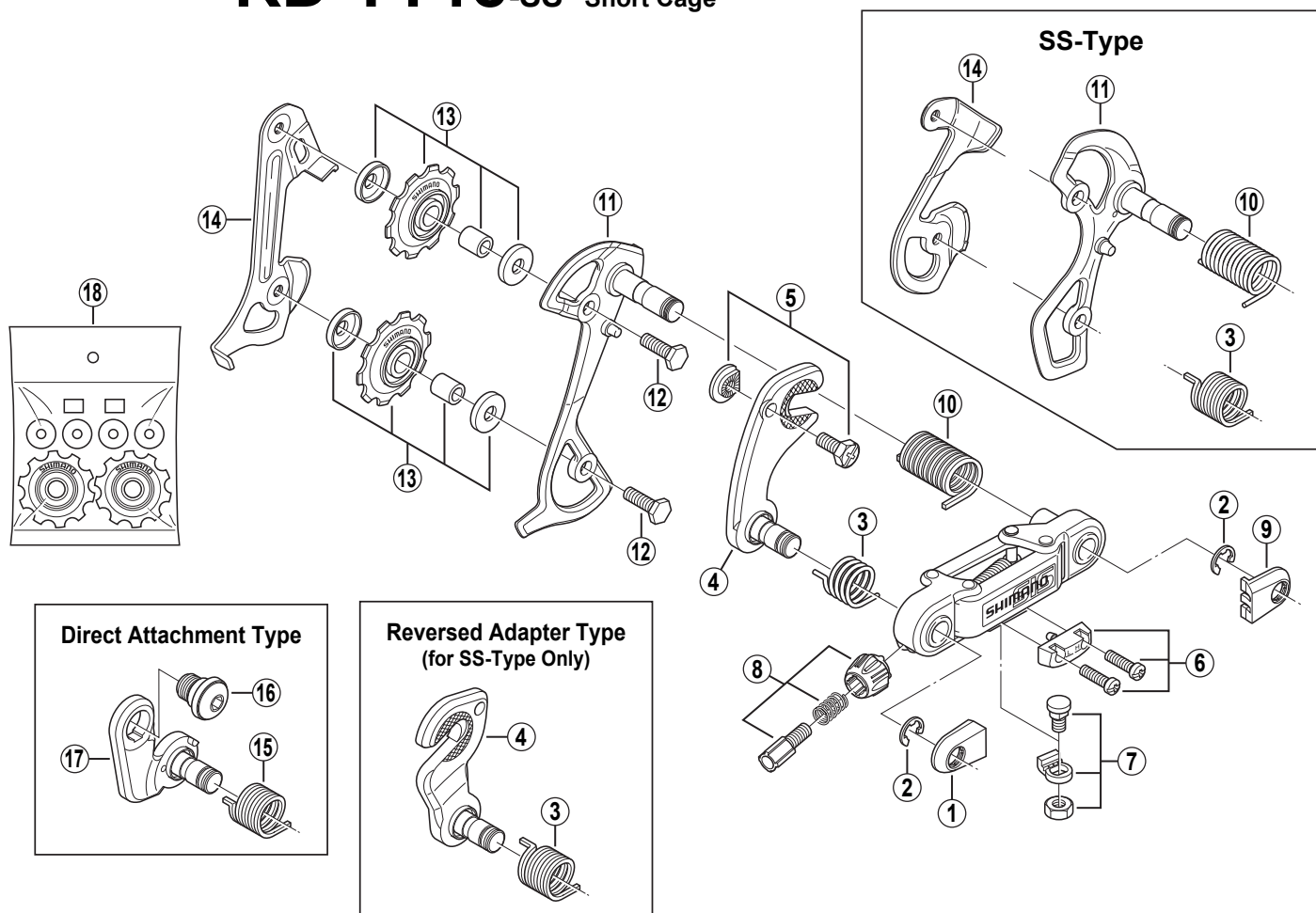


SHIMANO TOURNEY Rear Derailleur (6-Speed)

RD-TY18-GS Long Cage

RD-TY18-SS Short Cage



Q'TY	ITEM NO.	SHIMANO CODE NO.	DESCRIPTION
	1	Y-54W11000	B-Axle Cap
	2	Y-521 30010	Stop Ring (φ6 mm)
		Y-54Y 24120	B-Tension Spring (GS-Type) for Adapter Type
*	3	Y-53X 12000	B-Tension Spring (SS-Type) for Adapter Type
*		Y-5UU14000	B-Tension Spring (SS-Type) for Reversed Adapter Type
		Y-53X 98010	Adapter w/Mounting Shaft
*	4	Y-53X 98020	Reversed Adapter w/Mounting Shaft
		Y-54M98030	Adapter Screw (M5 x 11.5) & Nut
*	5	Y-53X 98030	Adapter Screw (M5 x 14.5) & Nut
	6	Y-521 98230	Stroke Adjusting Screws (M4 x 14.5) & Plate
	7	Y-54Y 98060	Cable Fixing Bolt Unit
	8	Y-54N98030	Cable Adjusting Bolt Unit
	9	Y-54Y 21000	P-Axle Cap
		Y-522 28000	P-Tension Spring (GS-Type)
*	10	Y-54Y 24110	P-Tension Spring (SS-Type)
		Y-54Y 98030	Outer Plate w/Mounting Shaft (GS-Type)
*	11	Y-54Y 98020	Outer Plate w/Mounting Shaft (SS-Type)
	12	Y-524 72000	Pulley Bolt (M5 x 15.4)
	13	Y-563 98390	Pulley Unit
*		Y-54L 09000	Inner Plate (GS-Type)
*	14	Y-539 22010	Inner Plate (SS-Type)
		Y-54Y 24100	B-Tension Spring (GS-Type) for Direct Attachment Type
*	15	Y-5UU13000	B-Tension Spring (SS-Type) for Direct Attachment Type
	16	Y-54Z 98080	B-Axle w/Spacer for Direct Attachment Type
	17	Y-54P 98060	Adapter w/Mounting Shaft for Direct Attachment Type
	18	Y-563 98100	Pulley Set (10 sets)