

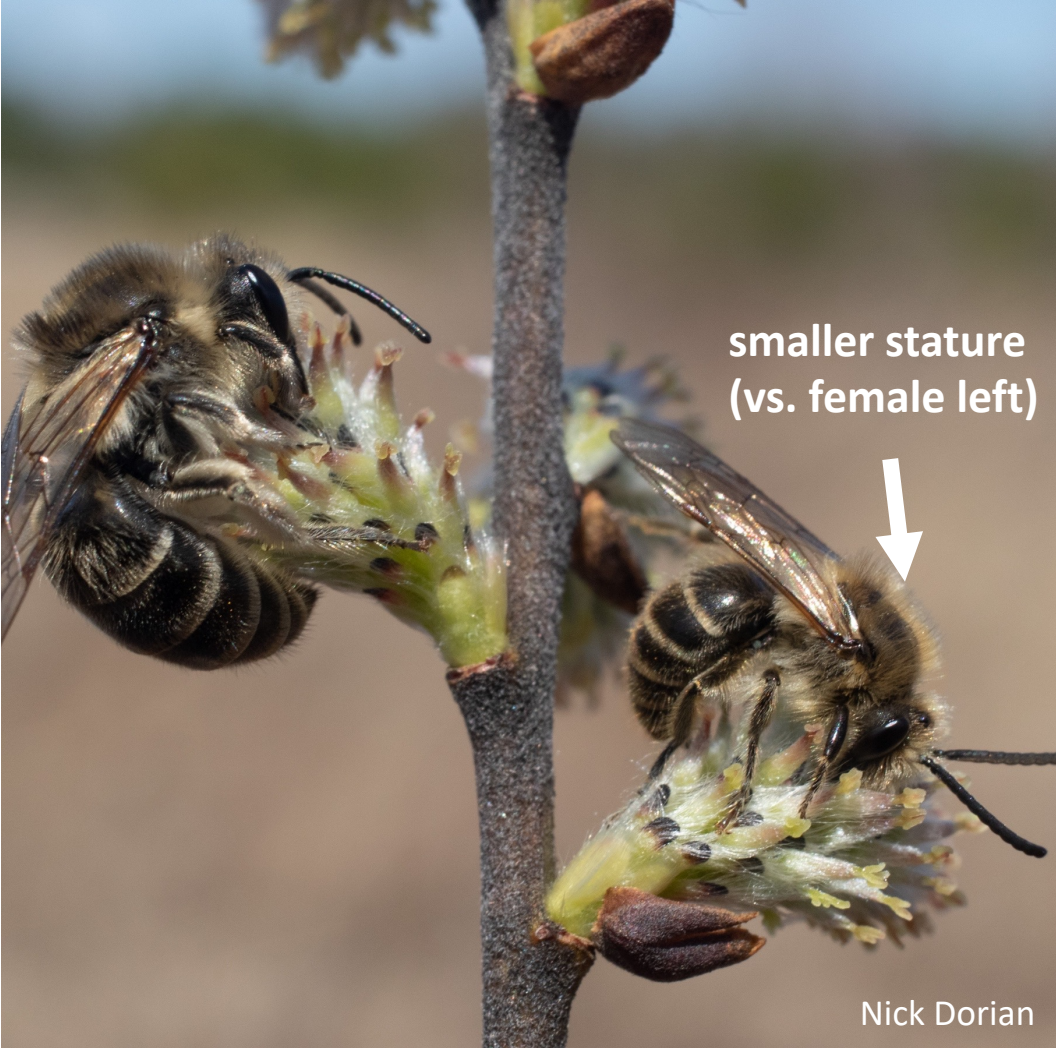
Unequal cellophane bee

(*Colletes inaequalis*)

- **Field ID tips:** 0.75x size of honey bee. Heart-shaped face, strongly banded abdomen, generally light sandy color.
- **Favorite plants:** red maples, redbud, bushy willows, plums, apples
- **Flight season:** mid-March through early-May. Typically one of the first bees to emerge in spring.
- **Nesting:** ground-nesting, aggregating often on sunny south-facing slopes; a “suburban” bee often nesting in cemeteries, backyards, and parks
- **Behavior:** Males patrol nesting aggregations for mates. Females frequently sun themselves in nest entrances.
- **Lookalikes:** similar-sized female *Andrena* lack banded abdomen and facial foveae are present



Males are active for a short period at the beginning of the flight season. They will often wait outside nest entrances for females.



Females are collect pollen in scopae on their hind legs. Wings are typically folded. In New England, most foraging often occurs in canopy of red maple forests.

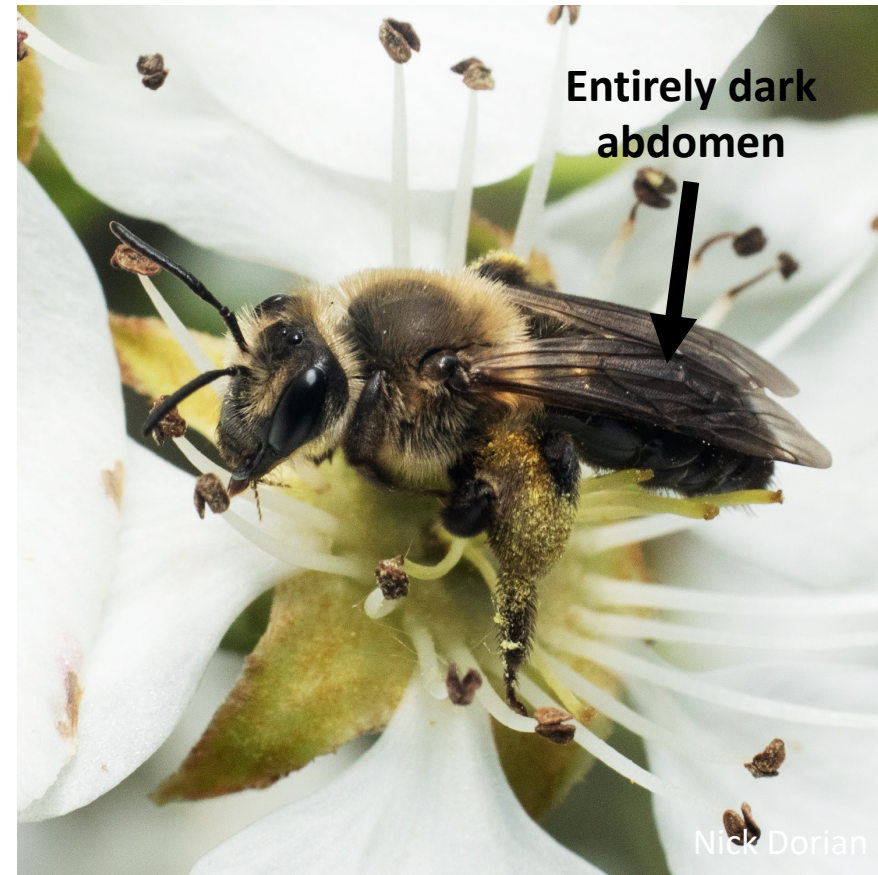
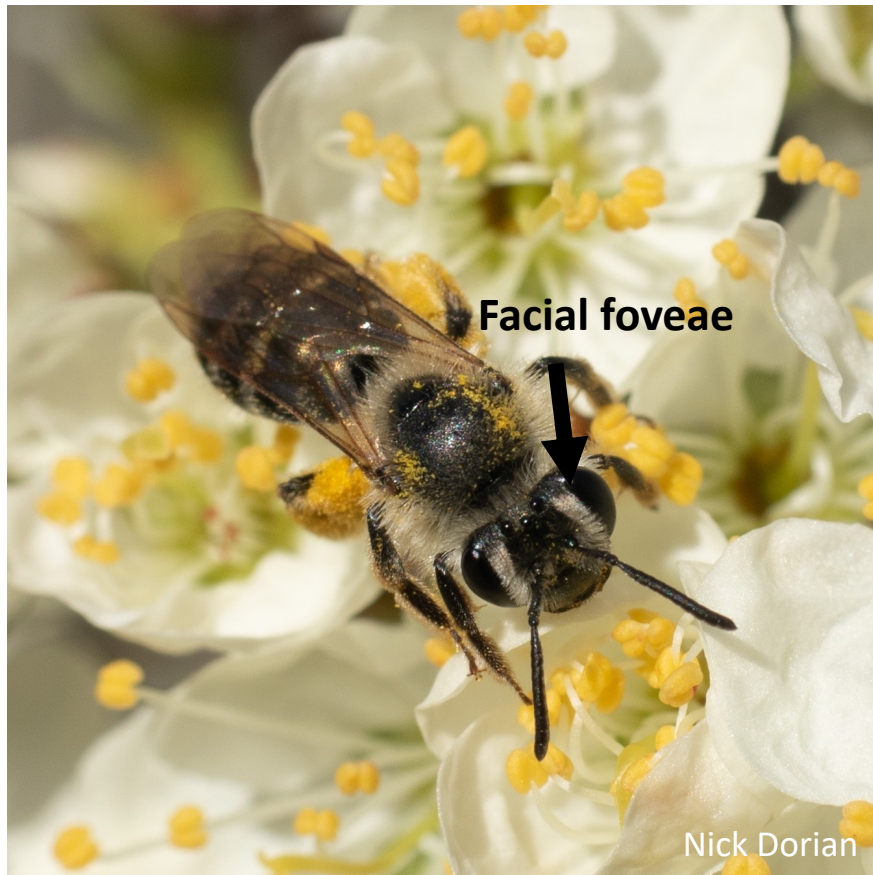


Nick Dorian



Heather Holm

Lookalikes: other spring-active *Andrena* have facial foveae and some have entirely black abdomens which *Colletes inaequalis* do not.



Colletes inaequalis is most easily located at nesting aggregations, which typically are situated on sparsely vegetated slopes near red maples.

