

SIEMENS

Ingenuity for life

Industry Online Support

Home

Updating software of SIDSI Process Historian Hosts

SIDSI Backup & Restore Basic

<https://support.industry.siemens.com/cs/ww/en/view/109795540>

Siemens
Industry
Online
Support



This entry originates from Siemens Industry Online Support. The conditions of use specified there apply (www.siemens.com/nutzungsbedingungen).

Security Information

Siemens provides products and solutions with industrial security functions that support the secure operation of plants, systems, machines and networks.

In order to protect plants, systems, machines and networks against cyber threats, it is necessary to implement – and continuously maintain – a holistic, state-of-the-art industrial security concept. Siemens' products and solutions only form one element of such a concept.

Customers are responsible to prevent unauthorized access to their plants, systems, machines and networks. Systems, machines and components should only be connected to the enterprise network or the internet if and to the extent necessary and with appropriate security measures (e.g. use of firewalls and network segmentation) in place.

Additionally, Siemens' guidance on appropriate security measures should be taken into account. For more information about industrial security, please visit <http://www.siemens.com/industrialsecurity>.

Siemens' products and solutions undergo continuous development to make them more secure. Siemens strongly recommends to apply product updates as soon as available and to always use the latest product versions. Use of product versions that are no longer supported, and failure to apply latest updates may increase the customer's exposure to cyber threats.

To stay informed about product updates, subscribe to the Siemens Industrial Security RSS Feed under <http://www.siemens.com/industrialsecurity>.

Contents

1	Introduction	3
2	Data Backup	4
3	Update the SIDS I Process Historian Host.....	5
3.1	Update the Firmware	5
3.1.1	Preparation for the Update.....	5
3.1.2	Installation of the ISO File.....	5
3.1.3	Execute the SPP Setup	10
3.2	Update the Drivers.....	11
3.3	Update Windows.....	14
4	Update the Software of the Process Historian / Information Server.....	16
4.1	Update the Process Historian / Information Server	16
4.2	Upgrade PH Ready on the Connected OS Servers	17
4.3	Upgrade IS Ready on the Connected OS Servers.....	18

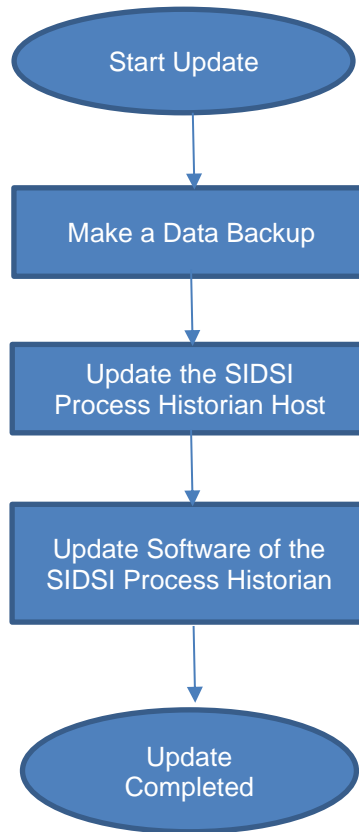
1 Introduction

This document will guide you through the various steps required to update your SIDS I Process Historian hosts.

WARNING In order to maintain the full functionality of your system, you must follow the specified sequence of steps.
Changing the order may cause your system to become non-functional afterwards.

You can omit steps that you do not need.

Figure 1-1



2 Data Backup

Make a backup of the Process Historian / Information Server

Before starting the update make a complete data backup.

You make a backup of the system by creating an image of the system partition with the Image Creator.

The Process Historian database must be backed up using SQL Server Backup.

Instructions for this are available in the following FAQ response:

<https://support.industry.siemens.com/cs/ww/en/view/66579062>

You should then save both the image of the system partition and the backup of the database on an external storage medium.

3 Update the SIDS Process Historian Host

This chapter describes how to update the SIDS Process Historian firmware to the latest version, as well as how to update the Windows operating system.

3.1 Update the Firmware

It is recommended always to keep the firmware of the backup server up to date. Below we describe how to procure and install the latest firmware.

A specially customized HPE Custom Image is installed on your system. This includes, among other things, the specific drivers for your hardware. Since the drivers depend on the firmware version of the hardware, not every firmware update is suitable for your server or compatible with the installed software.

Siemens Customer Support will assist you in selecting compatible firmware versions.

WARNING	To maintain an error-free system and consistent data, you must ensure that no backups are created or restored during the update or upgrade.
----------------	---------------------------------------------------------------------------------------------------------------------------------------------

3.1.1 Preparation for the Update

1. Contact Siemens Customer Support and create a Support Request to get the compatible firmware versions for your hardware:
www.siemens.com/industry/supportrequest
2. Download the SPP Update Package that you receive from Siemens Customer Support.
3. Copy the ISO file to an external data carrier and then connect it to your SIDS Process Historian.
4. Enable the "Idle" state of the Process Historian.
5. Make sure that all running recovery jobs are completed.

3.1.2 Installation of the ISO File

Note As an alternative to the installation via iLO described below, you can write the SPP to a USB stick using the HP USB Key Utility. The procedure is described in the [Hewlett Packard Enterprise Support Center](#). The link to download the tool is at the end of the description.

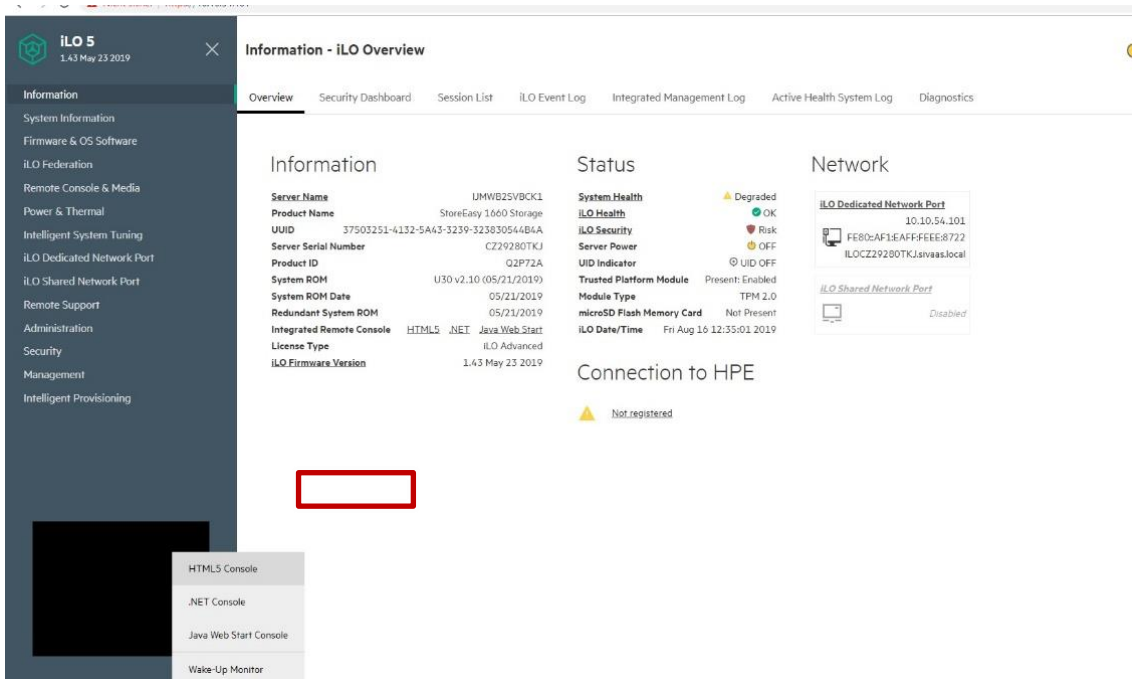
Then insert the USB stick into the server and continue with step 5 of the following description.

3 Update the SIDS Process Historian Host

1. Open a browser that supports HTML5. Enter the IP address of your iLO access and log in to the iLO portal. (SC 4) (iLO Login)

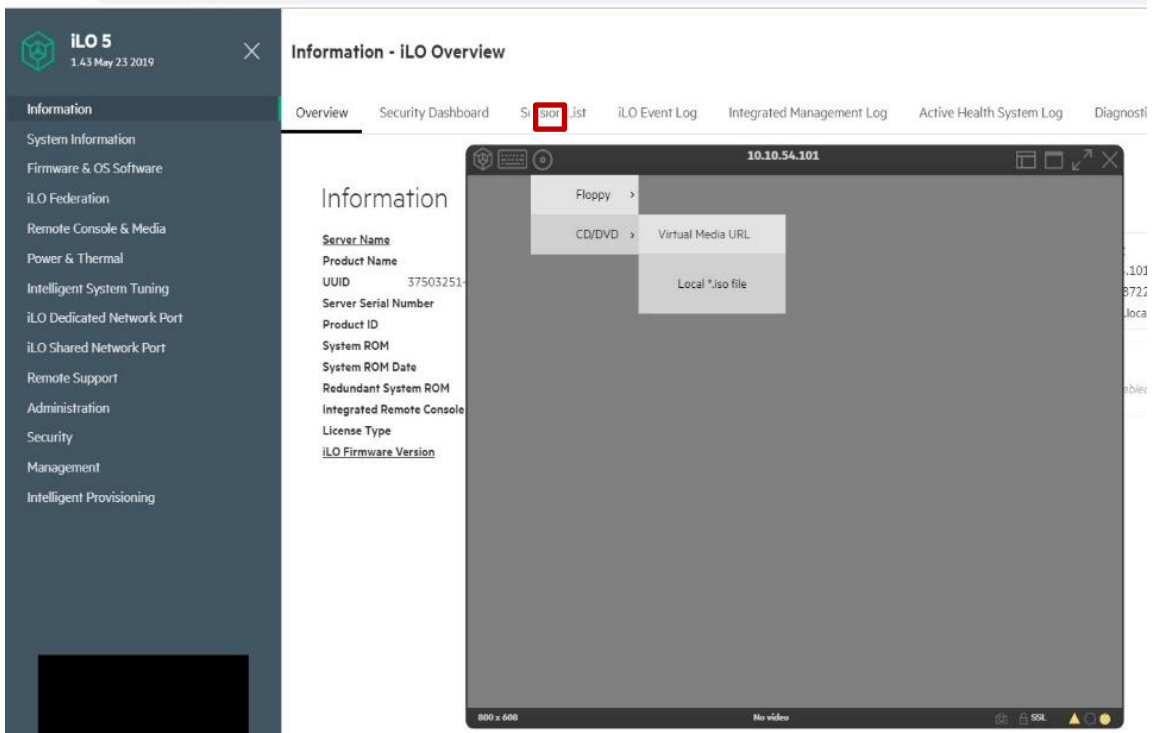


2. Right-click in the black field at the bottom left to open a pop-up menu. Here, you select the integrated HTML5 console. The remote connection to the interface of the server is established. (SC 5)

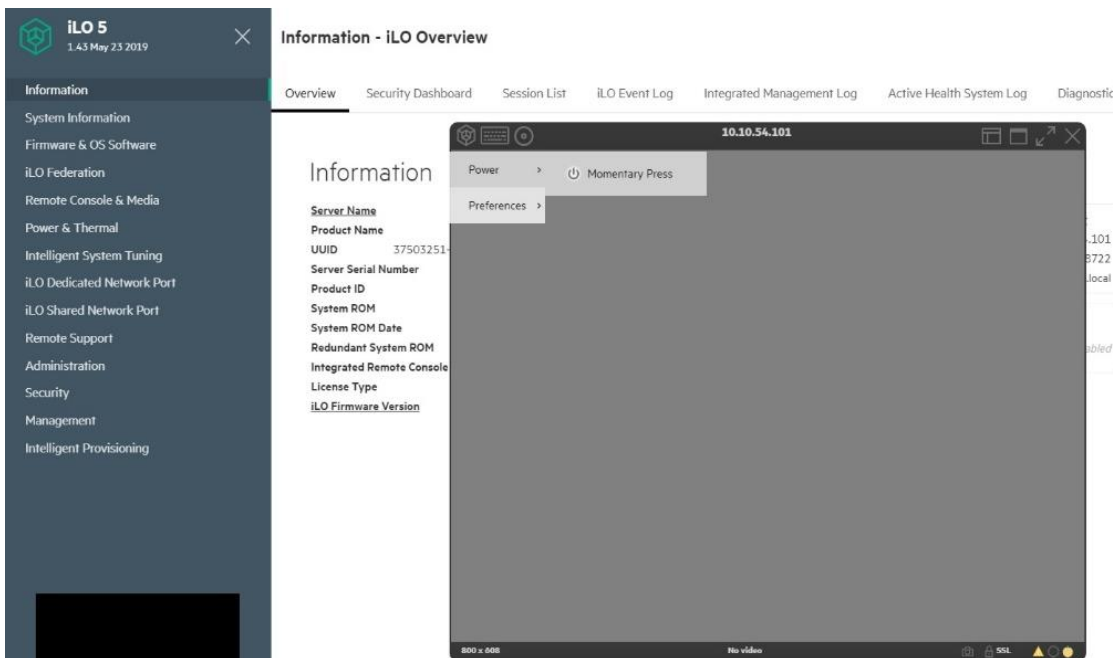


3 Update the SIDS Process Historian Host

3. Connect the SPP by clicking the CD icon. Select "CD/DVD" and then "Local *.iso file". (SC 6) (Mount ISO)

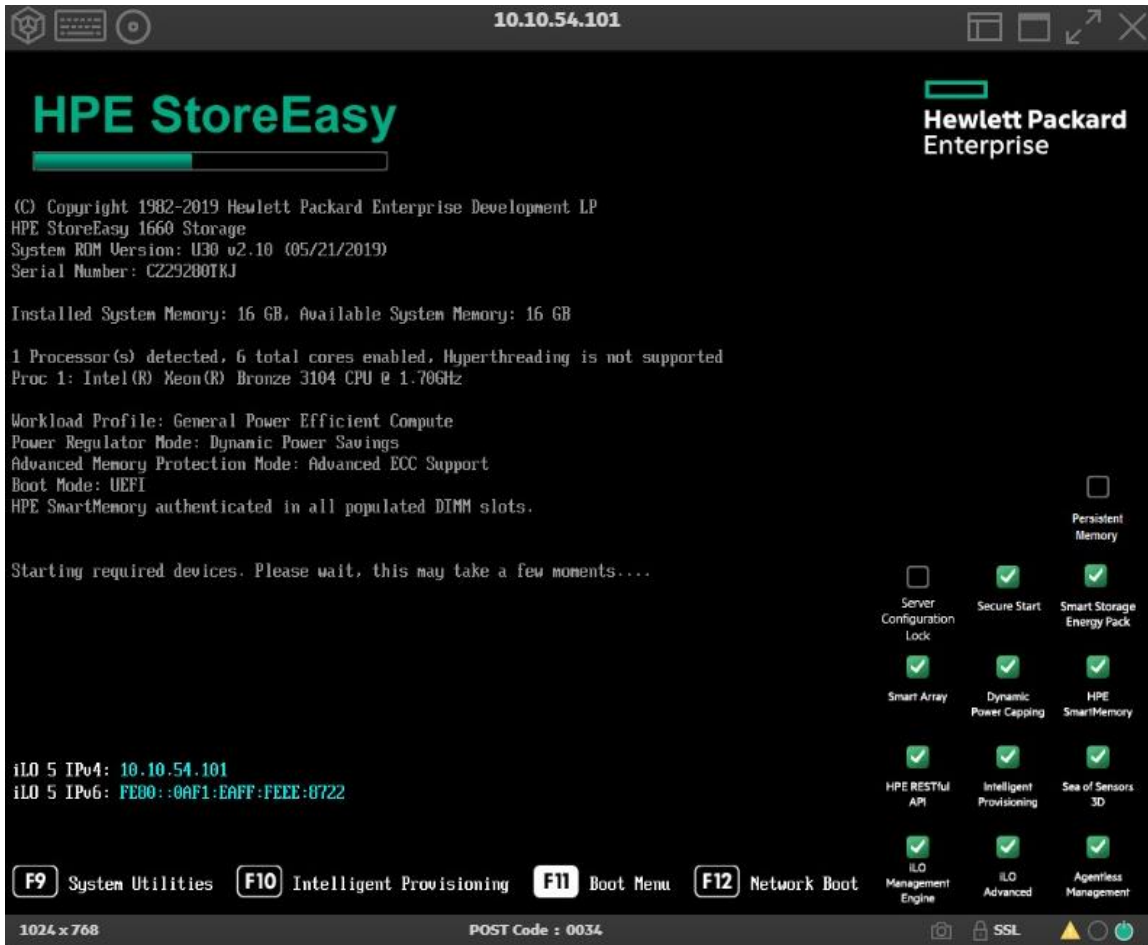


4. As soon as the image file is connected, you restart the server.



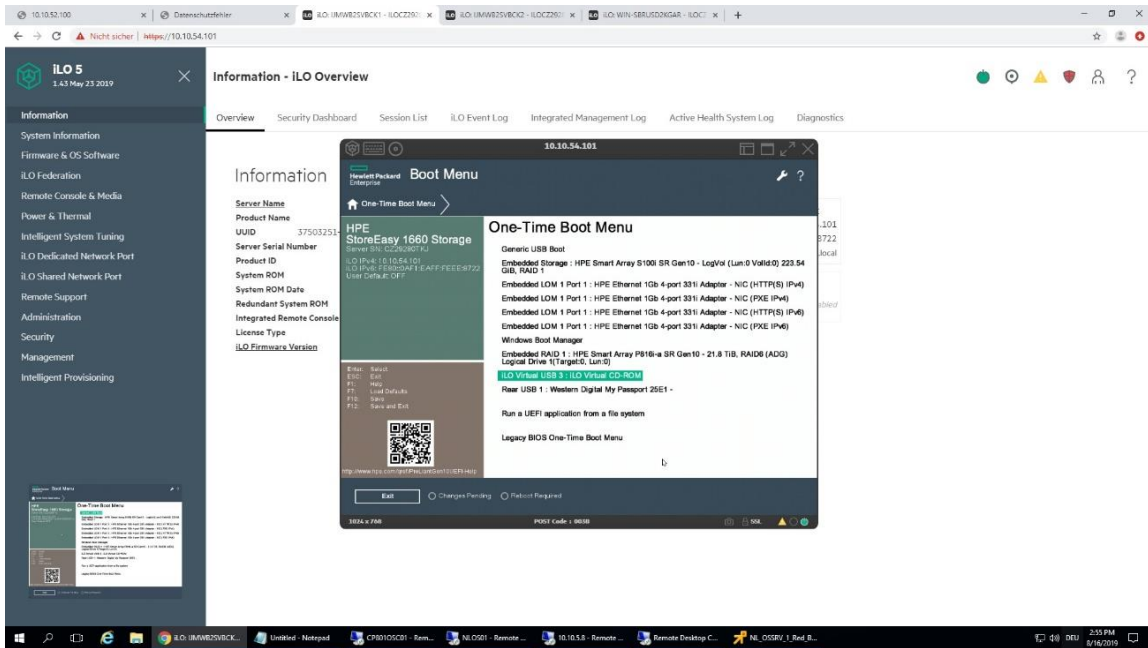
3 Update the SIDS Process Historian Host

5. Call the Boot menu with the "F11" key. (SC 7) (Boot Menu)



3 Update the SIDS I Process Historian Host

6. Start booting from the CD by selecting the menu item "iLO Virtual USB 3: iLO Virtual CD_ROM". (SC 8) (CD Boot)

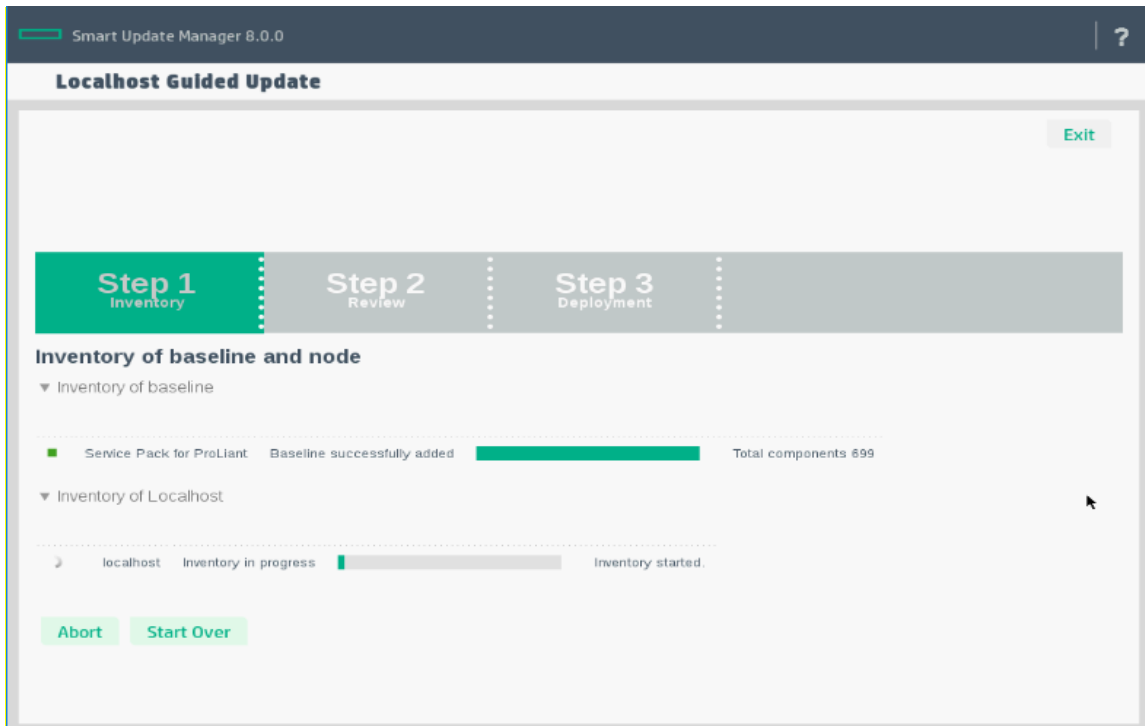


3.1.3 Execute the SPP Setup

After booting from the connected SPP setup, the update process runs automatically. The software executes the necessary updates for all existing firmware components of the server.

The iLO connection might be interrupted when updating the iLO firmware. In this case, start the iLO connection manually.

(SC 9) (Automatic Firmware Update)



The server is restarted automatically after the installation is complete.

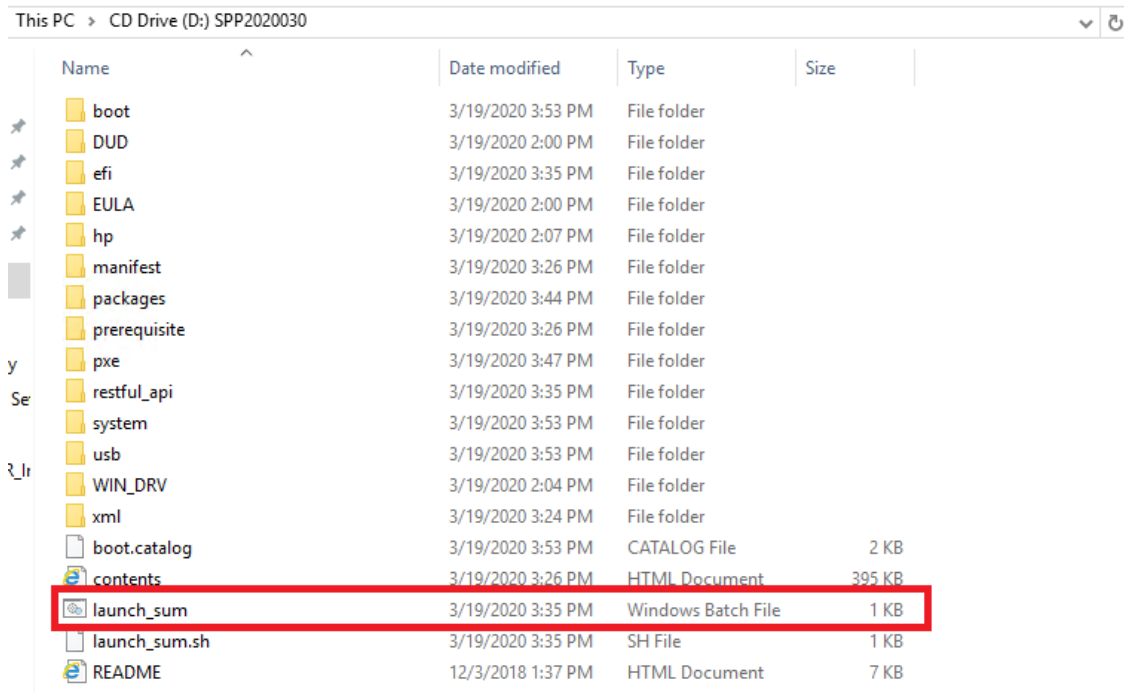
3.2 Update the Drivers

Initial situation

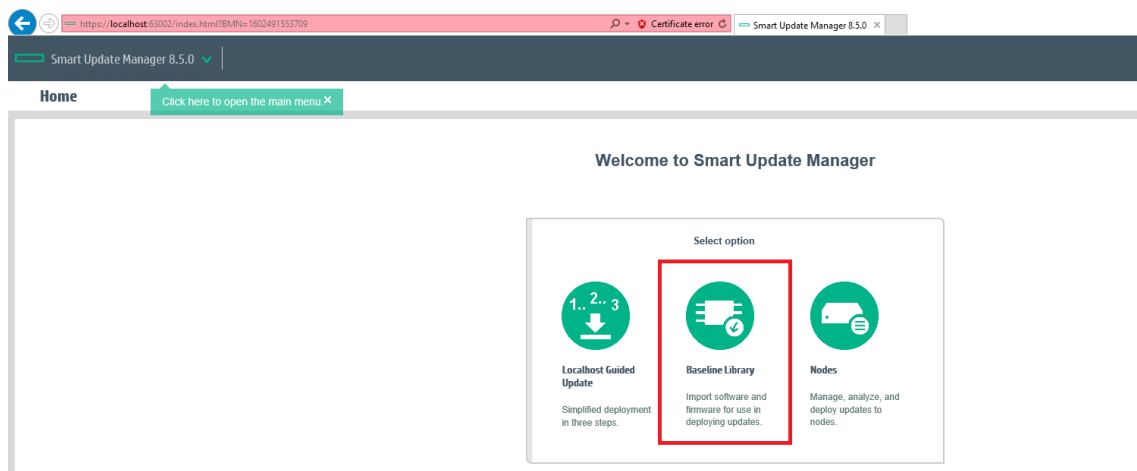
You have performed all steps from section 3.1.1 and steps 1-3 from section 3.1.2.

Process

1. Start the launcher.

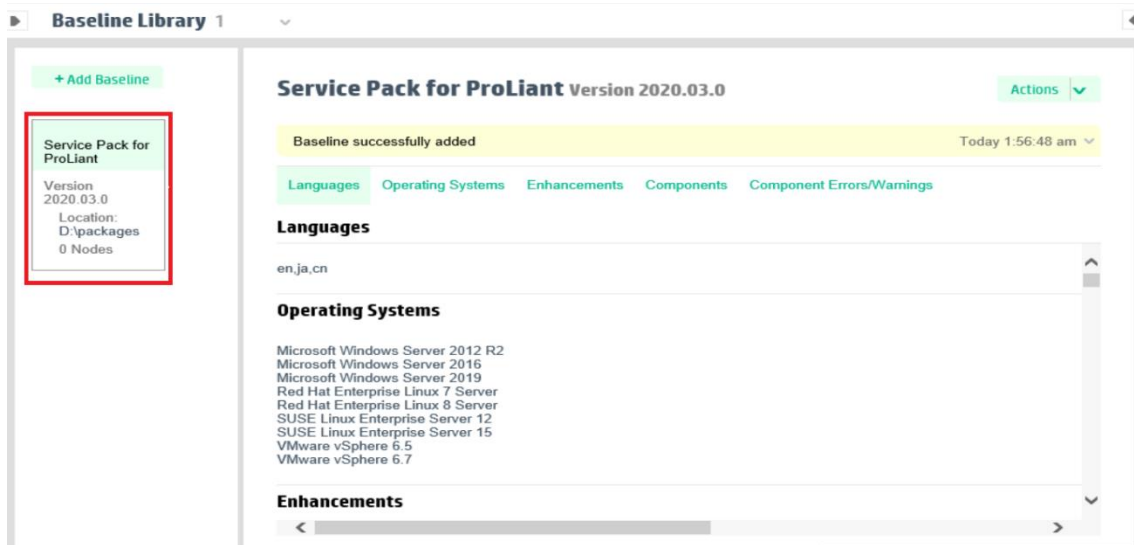


2. Select the Baseline Library.

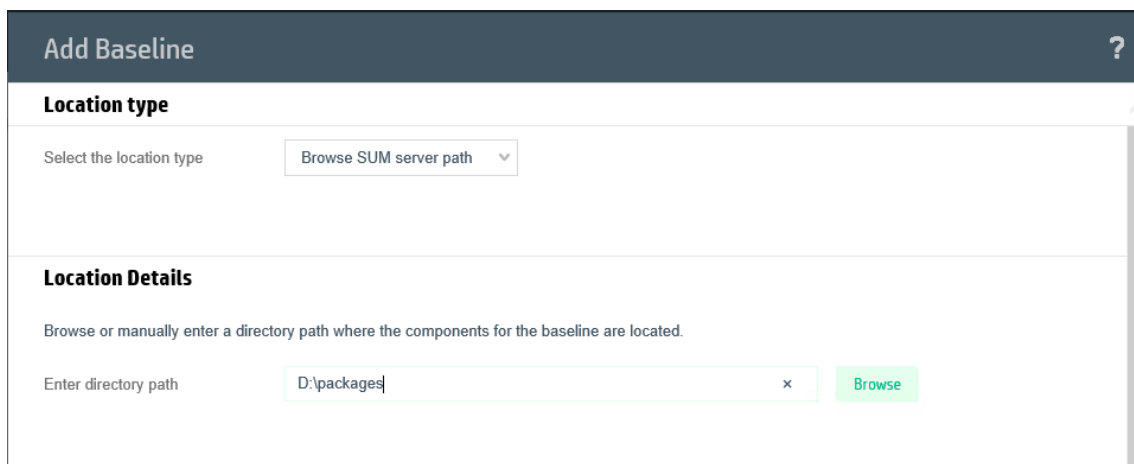


3 Update the SIDS Process Historian Host

3. If the SPP has been automatically detected as a baseline, it is already available in the Baseline Library

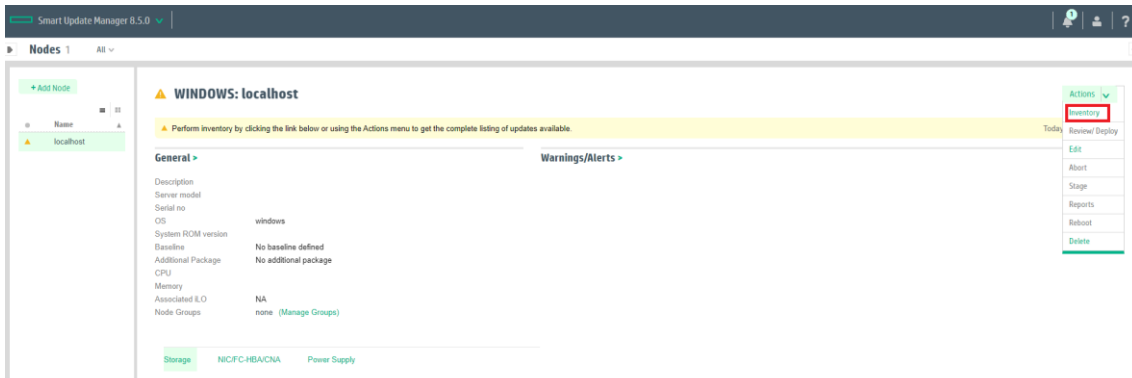


4. If the SPP has not been added automatically, add it manually via "Add Baseline". As "Location type" you select "Browse SUM server path". Under "Location Details" you navigate to the "packages" folder of the mounted ISO.

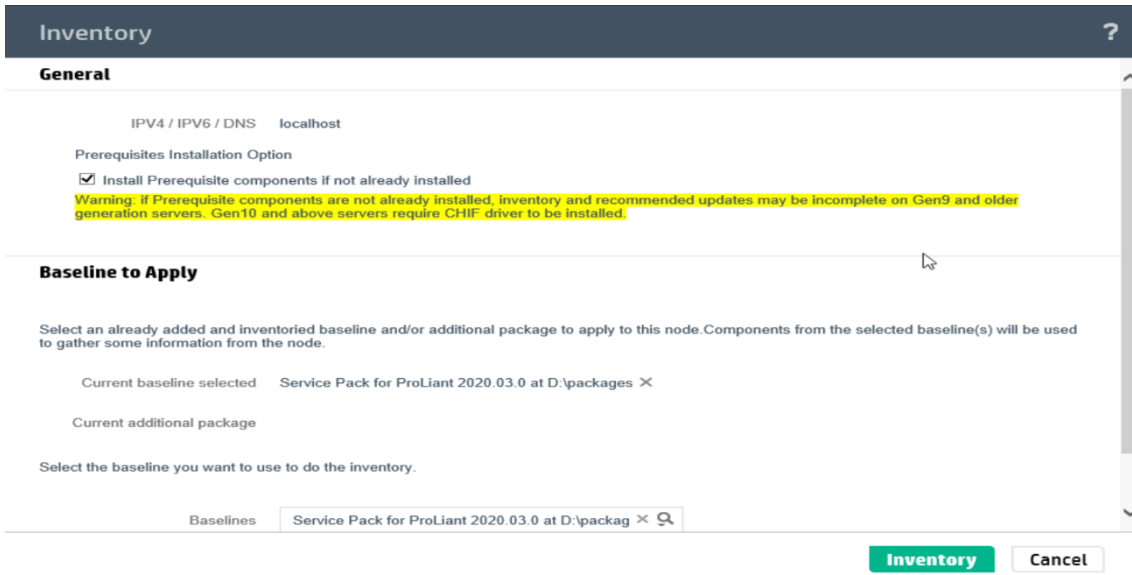


3 Update the SIDS Process Historian Host

5. In the Smart Update Manager drop-down menu, go to the "Nodes" section. Here you add the "localhost" as "Inventory" via "Actions > Inventory".

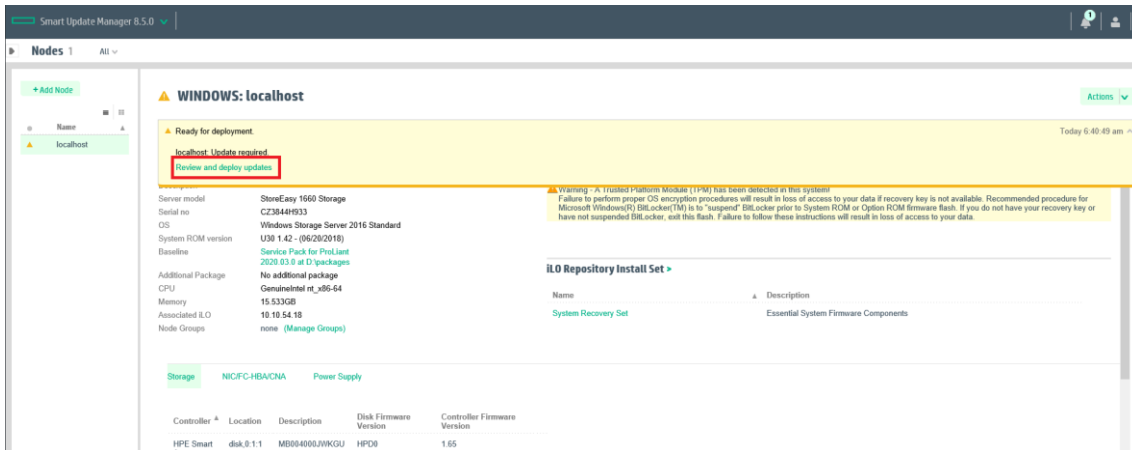


6. Select the SPP to be used as the baseline and confirm with the "Inventory" button.



3 Update the SIDS Process Historian Host

7. Afterwards, recommended drivers are listed via "Review and deploy updates".



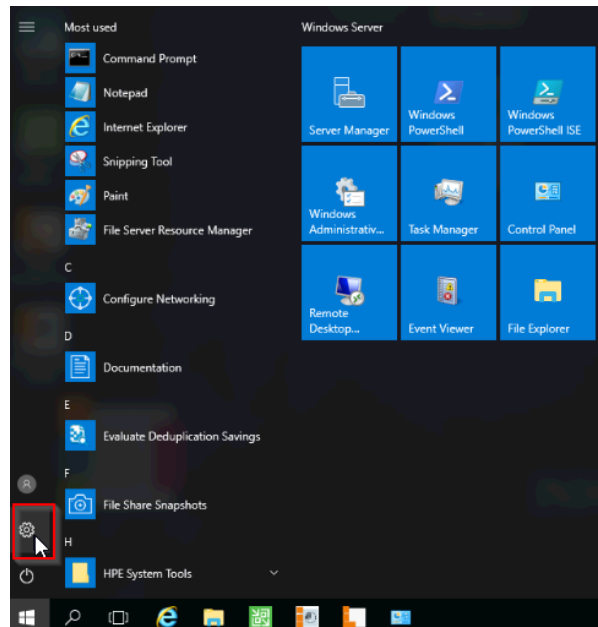
3.3 Update Windows

This chapter describes how to download and install the latest Windows updates.

Note

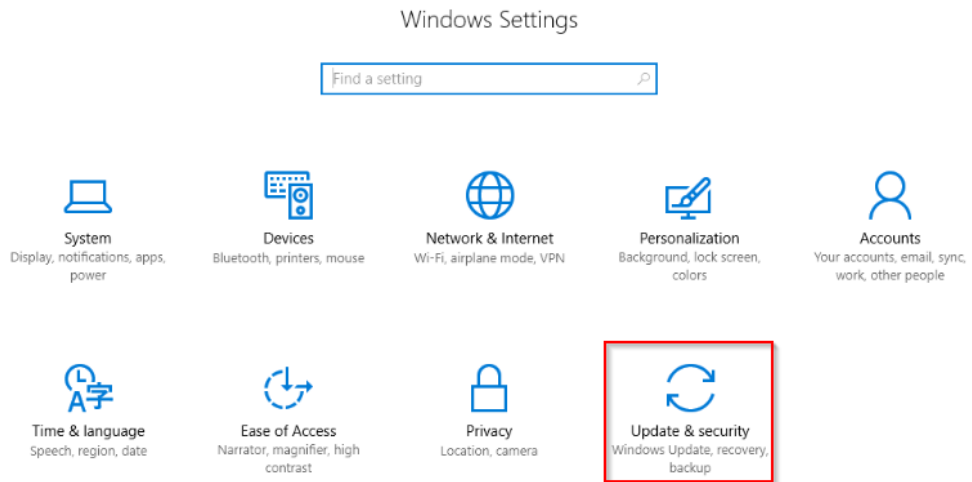
To download and install Windows updates, the server must have a working internet connection.

1. Open the Windows "Settings" of your server.



3 Update the SIDS Process Historian Host

2. Open Windows "Update & security".



3. Run "Check for Updates" and install the updates if necessary.

4 Update the Software of the Process Historian / Information Server

It is recommended to keep the SIMATIC Process Historian & Information Server software always up to date, so that all security relevant updates are installed.

In this chapter you will learn how to obtain and install the latest updates.

Note

In case of a considerable version difference, it may be necessary to perform the update with one or more intermediate steps.

WARNING Make a backup of all important data before performing an update/upgrade.

WARNING To ensure that the data remains consistent, all restore jobs (SF Recovery) must be completed successfully.

WARNING Updating may cause incompatibilities with other applications.

4.1 Update the Process Historian / Information Server

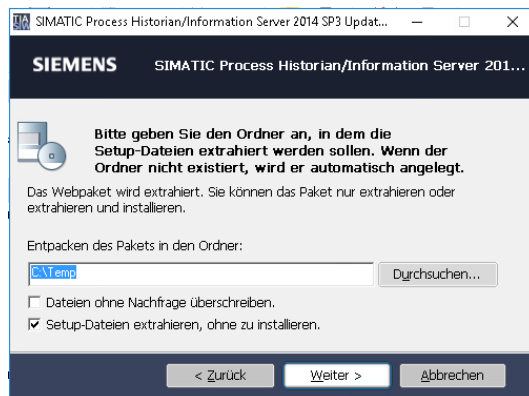
1. Shut down the SIMATIC Process Historian application via the PH Management Console. Do not proceed with the update until the Process Historian is in the "Idle" state.
2. Using a computer connected to the internet, download the latest update package. The easiest way to find the current and released updates in SIOS is via the Compatibility Tool and there under the respective PCS 7 version list: <https://support.industry.siemens.com/cs/ww/en/view/63481413>
Log in with your user data or if not available, create a new SIOS account.
3. Make sure that the downloaded ZIP archive is available on the SDISI PH/IS.
4. Run the setup file on the Process Historian / Information Server to start the Update Wizard.
5. Follow the installation instructions in the installation wizard.
6. Restart the system to complete the installation. After the upgrade installation, the Process Historian database installation wizard is launched.
Databases from previous versions are migrated via this wizard without changing the interfaces.
7. Follow the instructions of the database installation wizard to update existing data. Once the database is updated, a window with the summary of the performed actions is displayed.
8. Restart the system to complete the installation.
9. After successful installation of the update, the SIMATIC Web Configurator opens. Follow the Configurator instructions to complete the Information Server upgrade.

Note

This document describes the upgrade for a single Process Historian server. If your configuration is a redundant Process Historian with remote Witness Server, please refer to the update notes in the Update Readme.

4.2 Upgrade PH Ready on the Connected OS Servers

1. Perform steps 1-3 from the "Update the Process Historian & Information Server" chapter.
2. Run the setup file of the unpacked ZIP archive.
3. Select "Extract setup files without installing" to extract the contents of the self-extracting archive locally.



4. Then change to the directory where the data was extracted and copy the "`\InstData\ProcessHistorian\PHReady\`" folder to the OS servers where you want to upgrade the PH Ready component.
5. Run the setup from the copied folder on the OS and follow the installation wizard.
Take note of the license agreement and the open source license agreement.
6. Restart the system to complete the installation.
7. After the restart, check if the PH Ready service (CCCAPHServer) is still running with the previously configured user.
If the service is set to "Local System Account" after the restart, run the PH Ready configuration again to set the service back to the correct user.

4.3 Upgrade IS Ready on the Connected OS Servers

WARNING

If you have upgraded your Information Server, you must also upgrade the IS Ready components on all connected OS servers.

Operating different IS and IS Ready versions has not been tested and approved.

1. Perform steps 1-3 from the "Upgrade PH Ready on the Connected OS Servers" chapter.
2. Copy the folder "\\InstData\\InformationServer\\ISReady\\" to the OS servers where you want to upgrade the IS Ready component.
3. Run the setup from the copied folder on the OS and follow the installation wizard.
Take note of the license agreement and the open source license agreement.
4. Restart the system to complete the installation.
5. After the restart, check if the IS Ready service (Information Server ISReady) is still running with the previously configured user.
If the service is set to "Local System Account" after the restart, run the IS Ready configuration again to set the service back to the correct user.