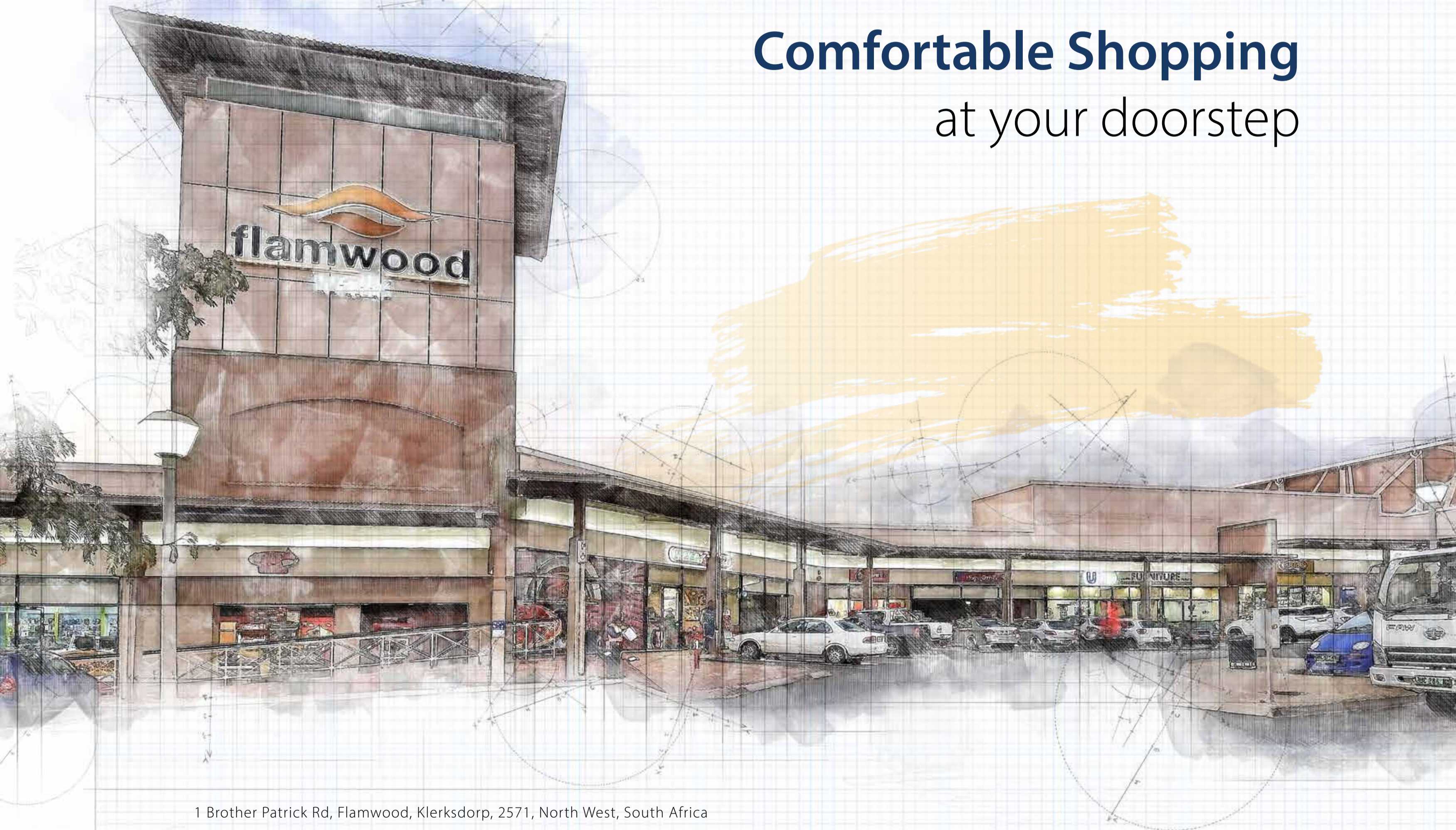


# Comfortable Shopping at your doorstep



1 Brother Patrick Rd, Flamwood, Klerksdorp, 2571, North West, South Africa

[FLAMWOOD.CO.ZA](http://FLAMWOOD.CO.ZA)



**flamwood**  
walk

KLERKSDORP NORTH WEST



**ATTERBURY**

*It's a matter of association*

- ▶ ABOUT ATTERBURY..... 1
- ▶ LOCALITY & ACCESS..... 2
- ▶ INTRODUCTION FLAMWOOD WALK & VALUE CENTRE..... 3
- ▶ PHOTOGRAPHIC LIBRARY ..... 4
- ▶ ARCHITECTURAL PLANS
  - ▶ SITE PLAN ..... 6
  - ▶ PARKING & AUTOMOTIVE OFFERING..... 7

# TABLE OF CONTENTS





MASTER PLAN:  
**DEVELOPING  
DREAMS**

1994 saw the beginning of a new era for South Africa. It was the birth of our country as a new, true democracy and the whole world was waiting in anticipation to see to what levels the Rainbow Nation would rise.

1994 also marked the birth of Atterbury and the founders, Francois van Niekerk and Louis van der Watt, realised that there were no limits to their dreams of becoming an international force to be reckoned with. For over 27 years Atterbury has developed and managed prime commercial, industrial, retail and residential property across South Africa, the rest of the African continent and Europe.

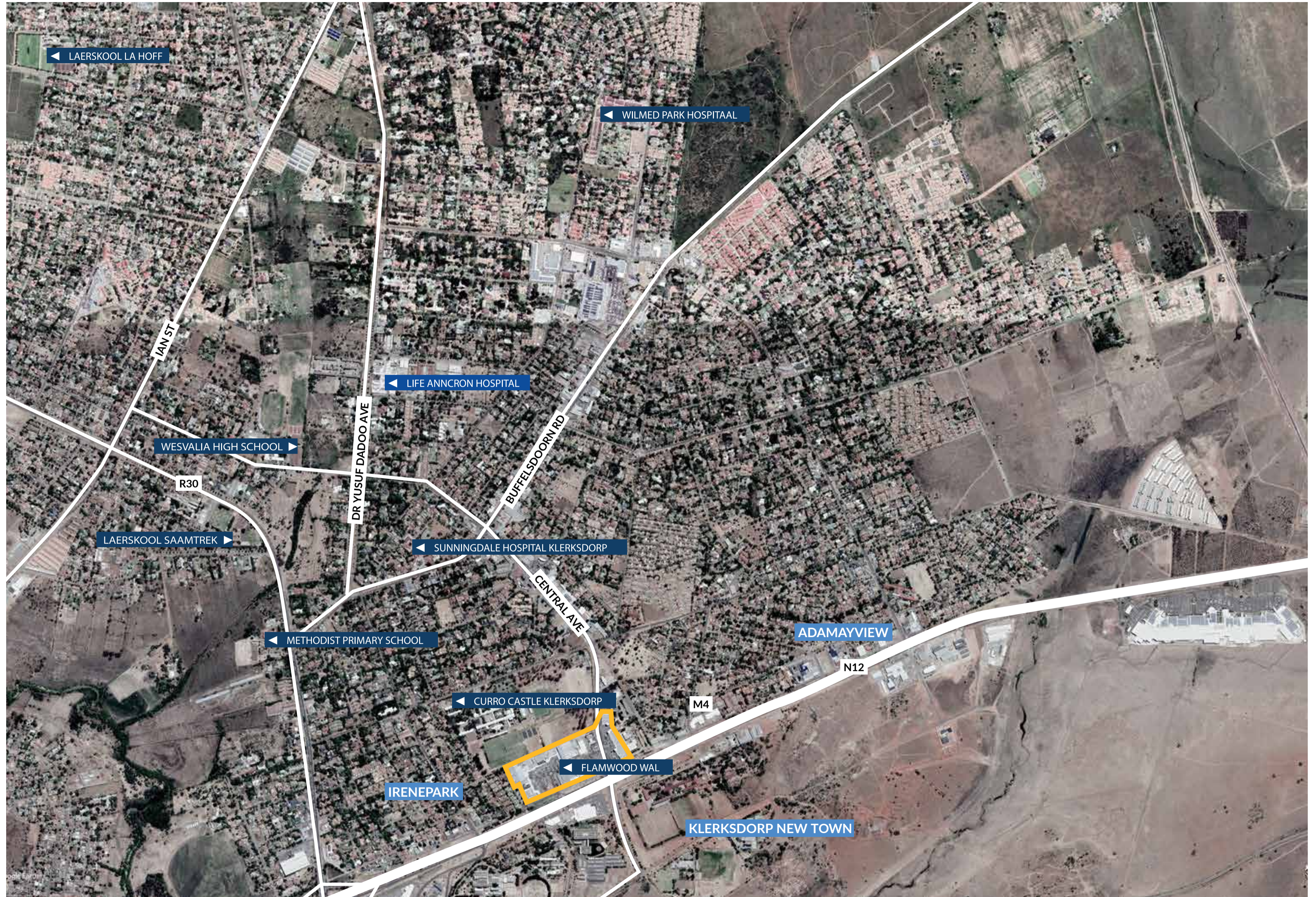
Within the Atterbury Group you are sure to find expertise in development, asset management, leasing and corporate services. At Atterbury, we've always believed that development is the key to unlock economic and societal growth and improvement. Creative, well-managed spaces, featuring appealing aesthetics and elegant architecture within safe and accessible environments are hallmarks of all Atterbury developments.

**Atterbury is renowned as a leading industrial developer evident by winning consecutive SAPOA awards for best industrial development in South Africa from 2015 to 2017 for Westcon, Hilti and Amrod at Waterfall City in Gauteng.**





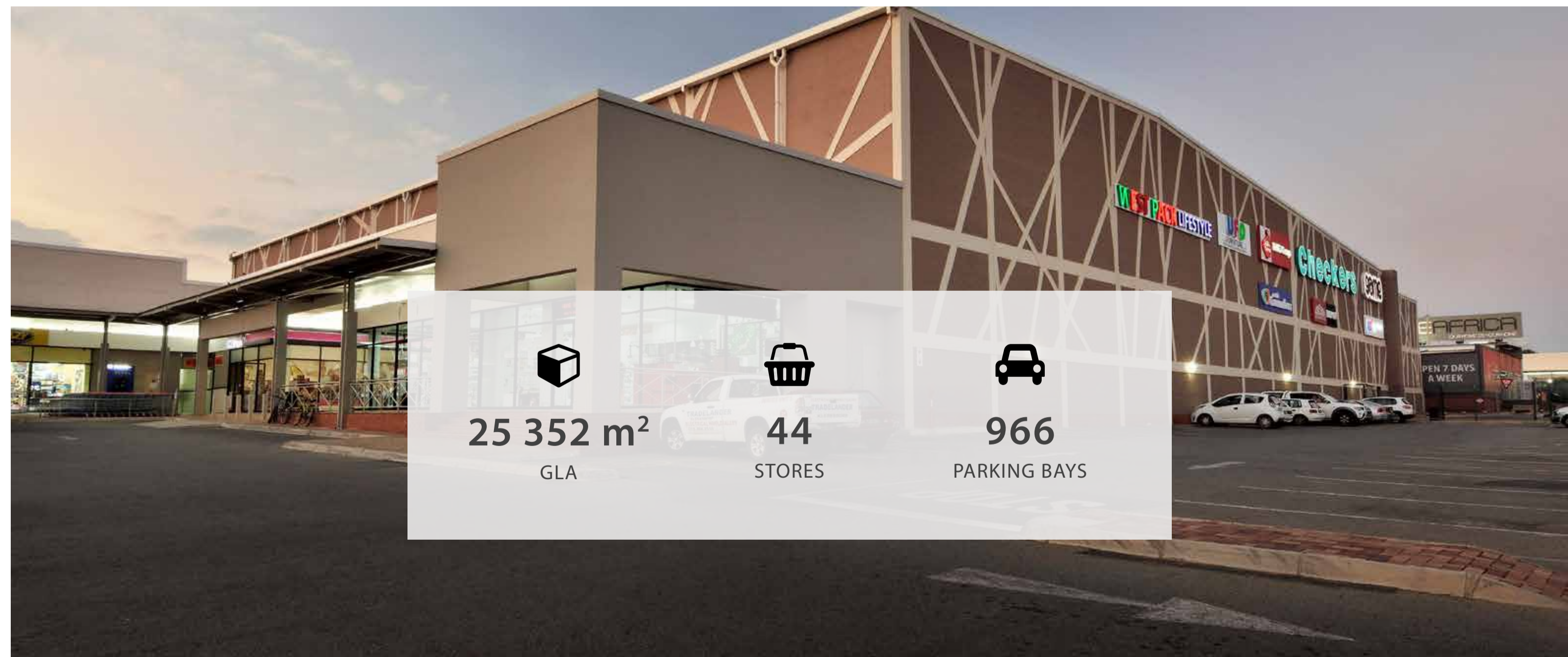
### LOCALITY & ACCESS

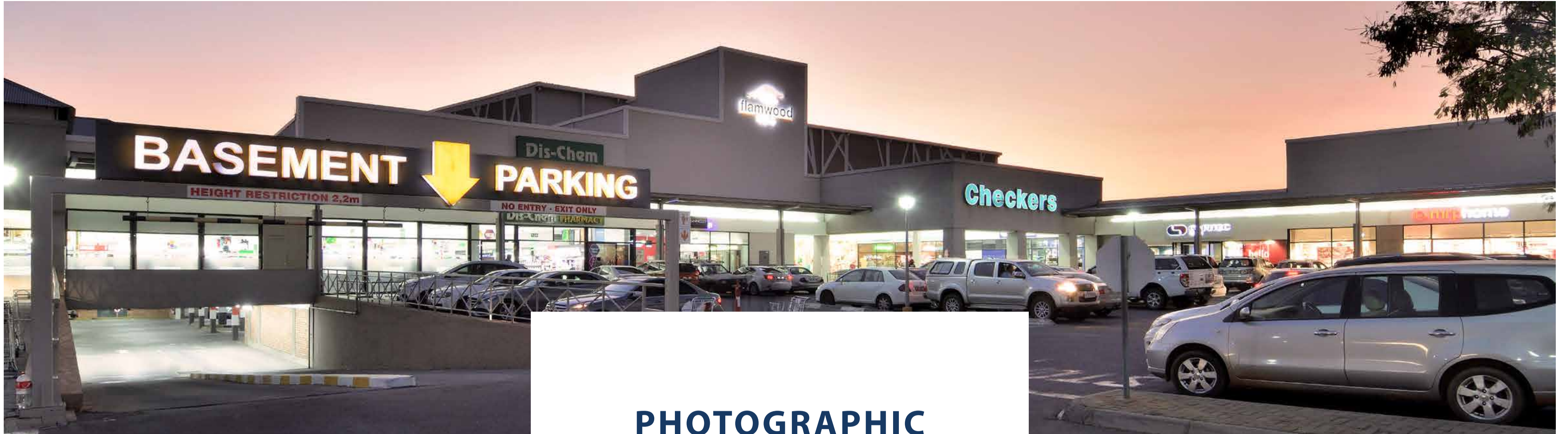




After the revamp in November 2014, Flamwood has established itself as a jewel in the crown of the City of Matlosana. Its diverse offering of retail stores, showrooms and restaurant options, presented in a pleasant, safe and upmarket environment makes it a key contributor to the region. Flamwood, a convenient retail centre, provide customers with easy access and on-grade parking.

Its excellent access to major road networks and central position on the N12 Treasure Route makes it a truly convenient retail destination.





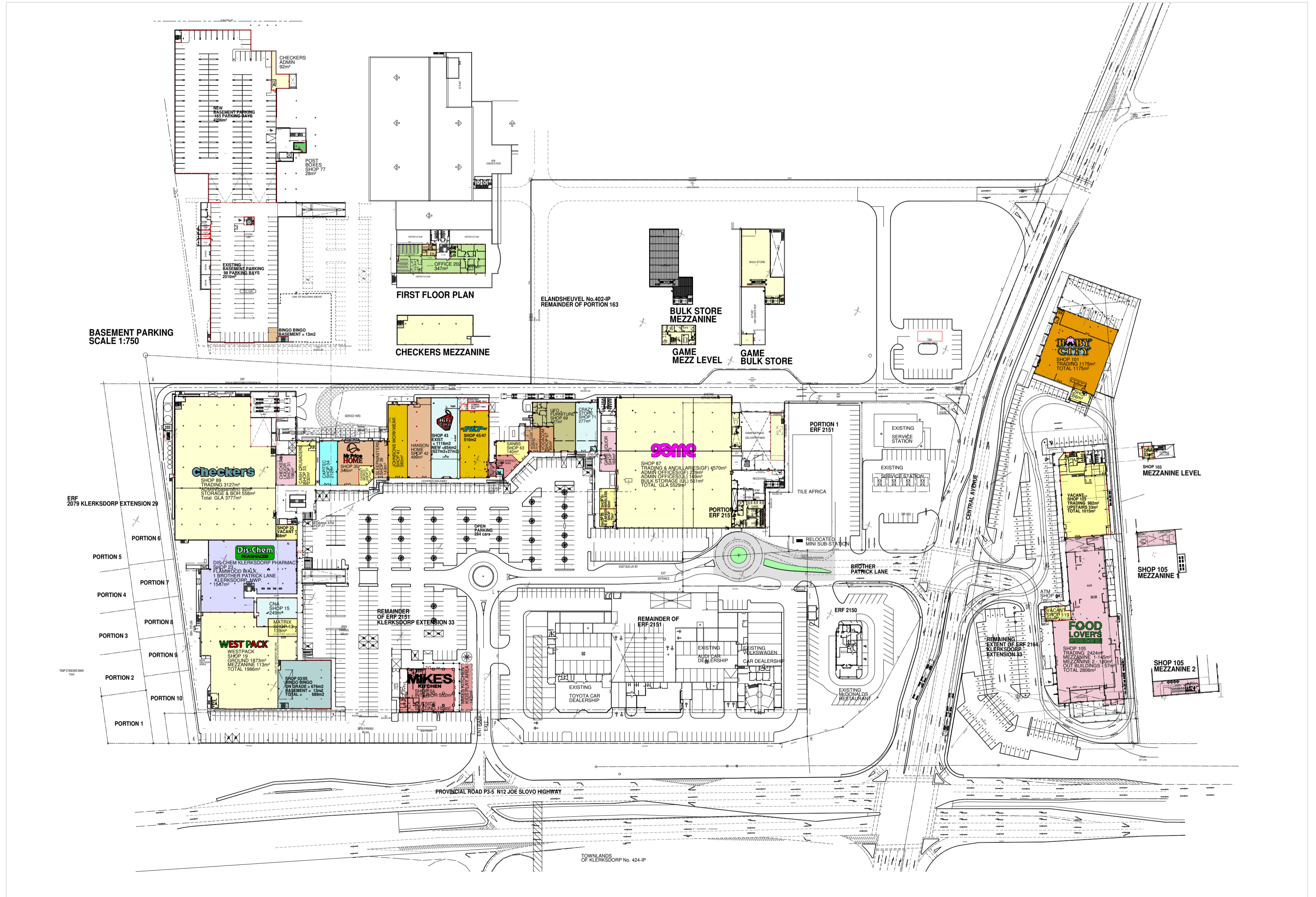
**PHOTOGRAPHIC  
LIBRARY**







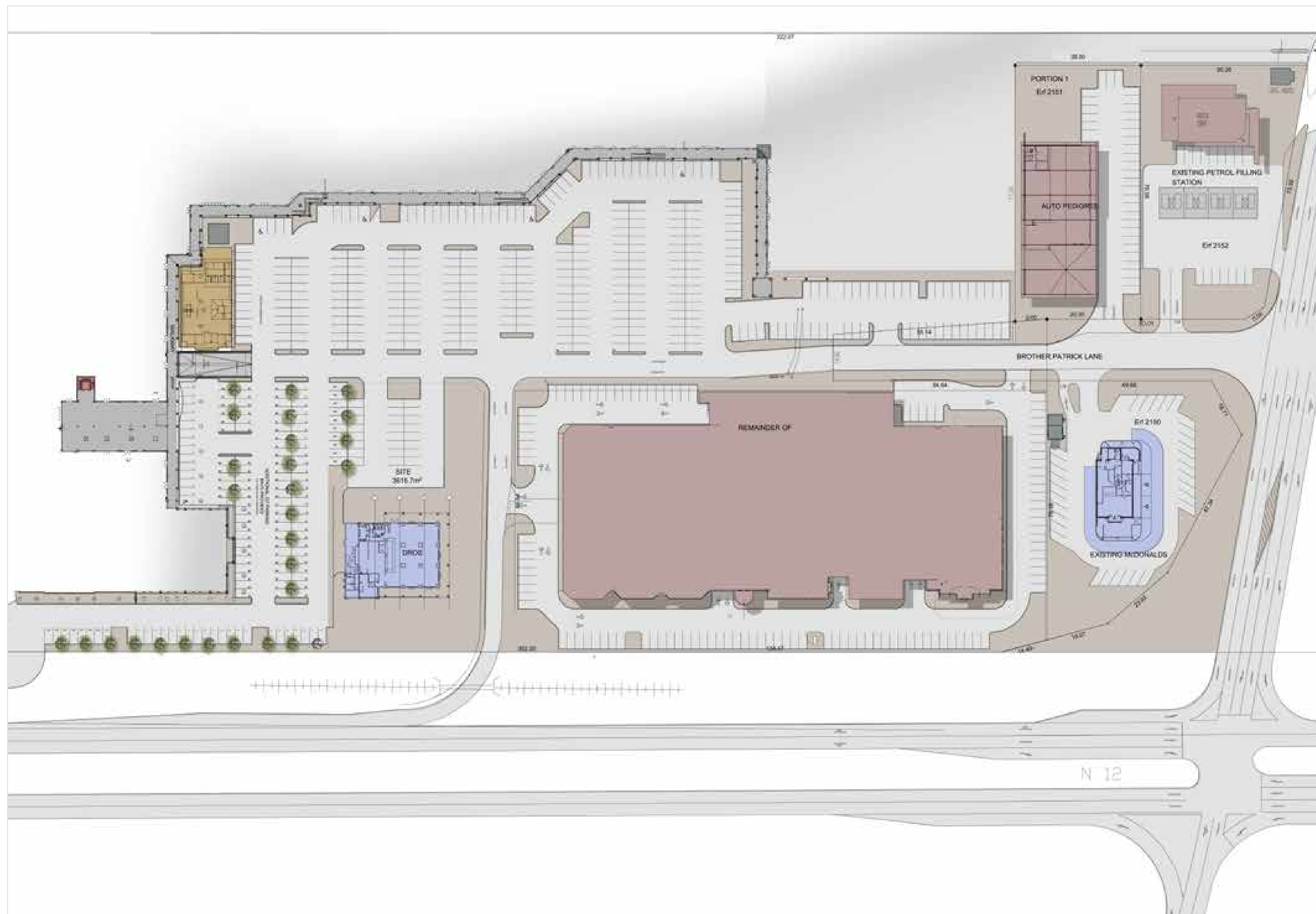
# SITE PLAN







**PARKING &  
AUTOMOTIVE  
OFFERING**





PRETORIA OFFICE

Die Klubhuis 2nd Floor C/o 18th Street & Pinaster Ave Hazelwood, Pretoria

Tel: +27 12 471 1600

[enquiries@atterbury.co.za](mailto:enquiries@atterbury.co.za)

[atterbury.co.za](http://atterbury.co.za)