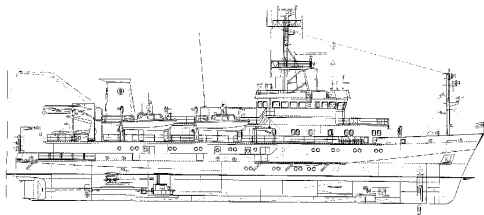
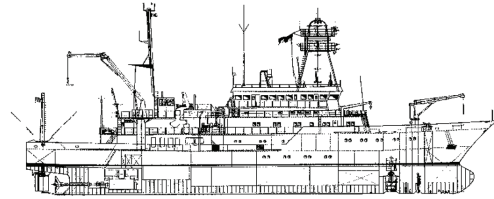


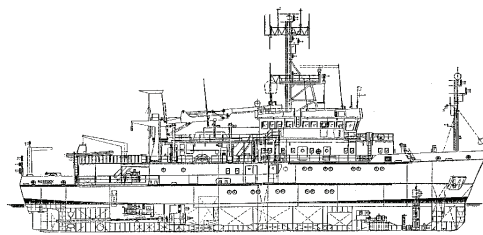
DATA DIS[®] **Data Acquisition & Distribution System**



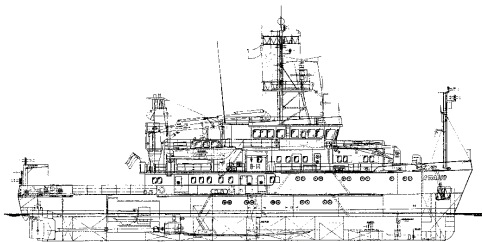
VS „Komet“



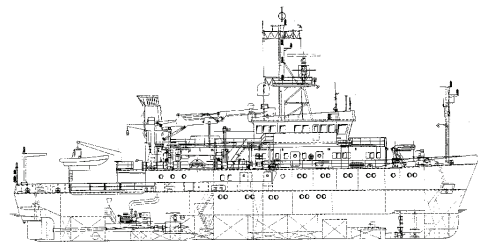
FS „Gauss“



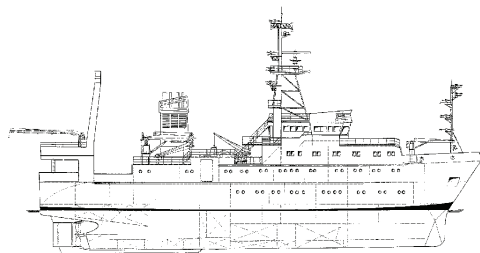
VWFS „Deneb“



VWFS „Atair“

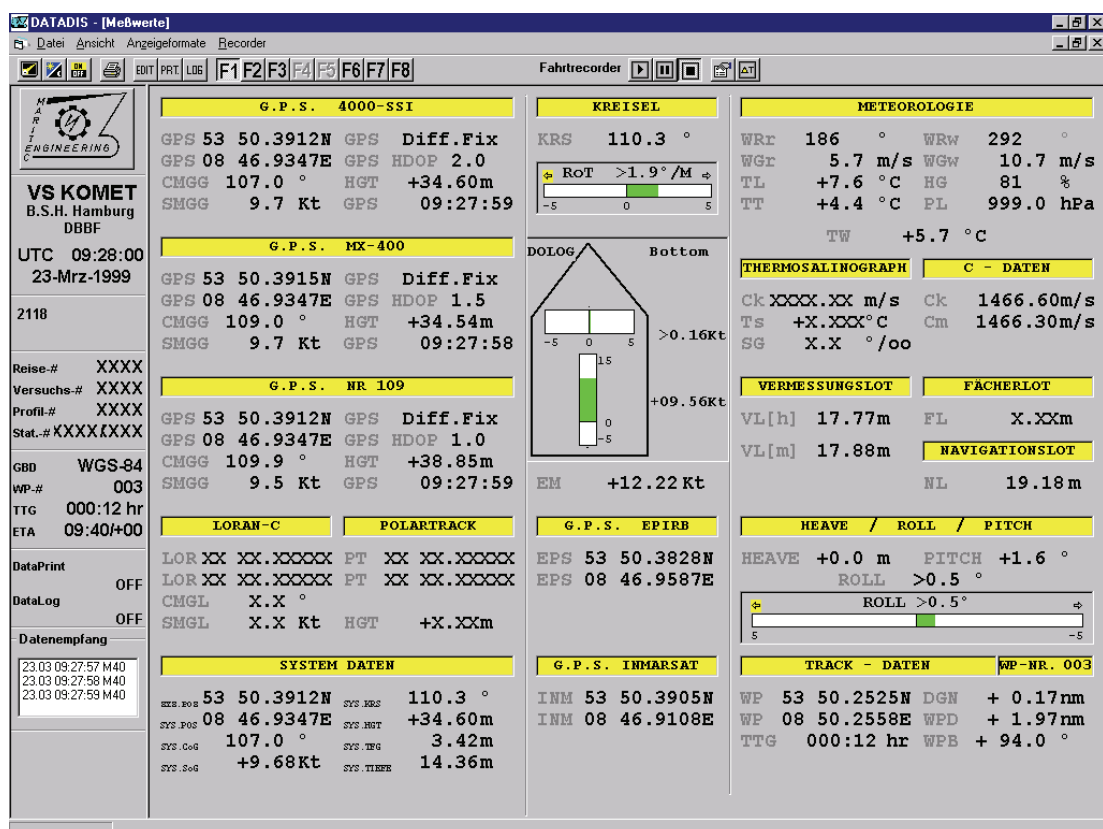


VWFS „Wega“



FFS „Walther Herwig III“

Software for recording of nautical, meteorological, survey, fishery and ship's data and their processing, recording, presentation and storage.



Brief Description

Data Acquisition & Distribution System DATADIS®

The **DATADIS®** software is designed for continuous recording of nautical-, meteorological-, survey-, fishery and ship's data and their digital and/or graphical presentation, processing and storage.

The software is based on **Windows™-NT/2000/XP/VISTA** and detects automatically if installed on a **SYSTEM-** or **USER-PC** and if the data are available via **ETHERNET-LAN**, **CAN-Bus** or a **Serial DATADIS®** receptacle.

When starting the **DATADIS®** software, the provided unchangeable data display-format < **Data** > with all relevant information, will be shown in the **DATADIS®** display-mode together with an information column for specific voyage data and system configuration.

In the **DATADIS®** display-mode seven (7) most commonly used out of several display-formats created by the client can be attached to function keys and called up directly or by < **SHIFT** > + < **Fx** >.

The basic possible adjustments of each format can be altered by a right mouse click.

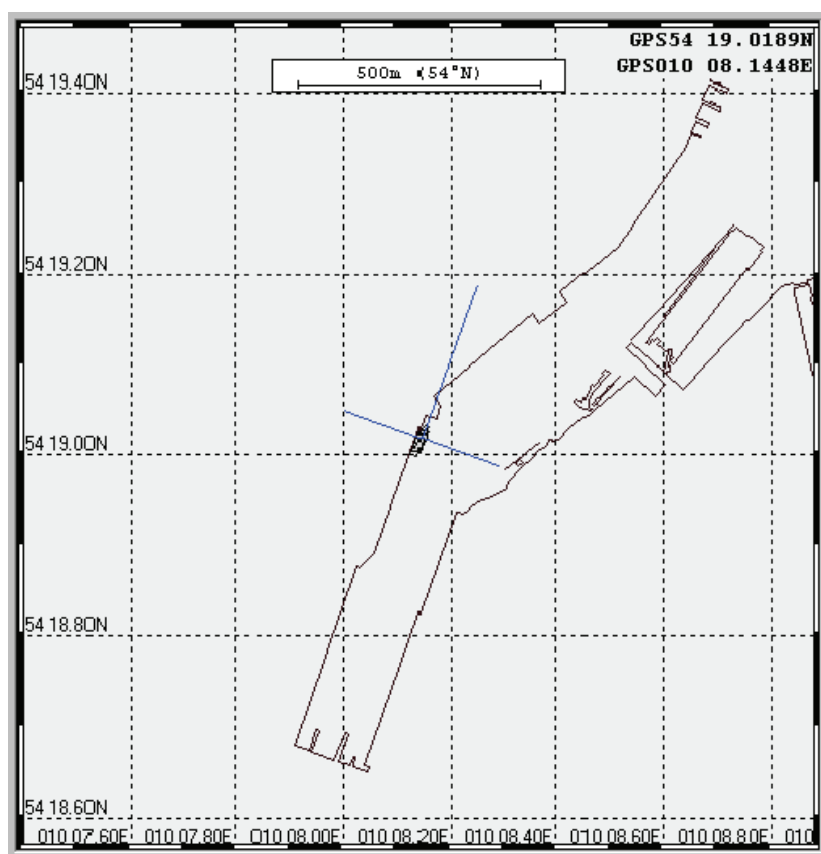
The allocation of format --> function key < **Fx** > can be done with a right mouse click in the symbol strip!

In the **DataEdit** mode client and work specific display- or print-formats can be created by using Drag & Drop of digital and analog display forms like :

- digital value with ID and unit of measurement
- beam and/or line diagram
- indication of direction i.e. by compass magnifier
- X-/Y-speed respectively thrust indication
- water-level indication and diagram (OPTION)
- analogous clock

together with the respective sensor data.

The display size, the colouration and the in each case most valid indication of data can be changed! A multiple indication or cross-fade of data is also possible! For each displayed value the basic possible adjustments can be altered by a right mouse click.



In addition a [chart display](#) with/without [world shore lines](#), [track](#) and [noontime position](#) and the respective possible adjustments and presentation modi can be selected e.g.:

- fixed chart section
- center always ships position
- true motion presentation with chart variation at 80% sailed surface
- automatic chart zooming when steaming towards a target point
- STATION-Display – center = target
- STATION-Display – ship = target
- STATION-Display – ahead bearing
- ships outline, variable reference point (mast/web beam/A-frame)
- indication of bearing/distance for a manual or automatic accepted waypoint

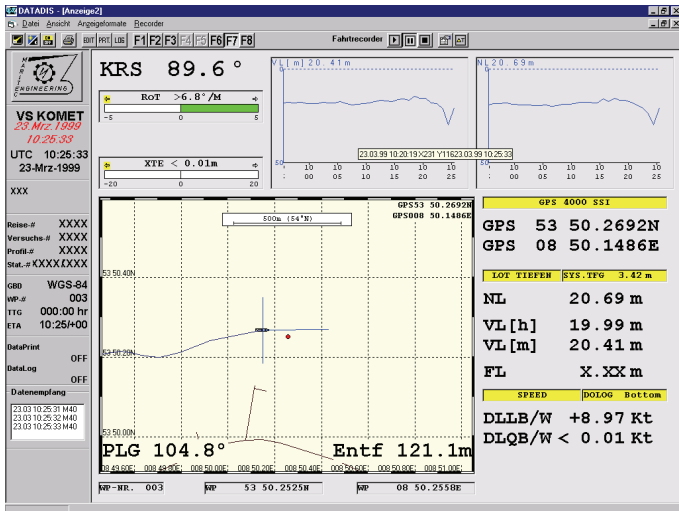
A chart sector enlargement with **<CTRL> + <I.Mouse>** or a reduction with **<ALT> + <I.Mouse>** is possible ! In the [DataPrint](#) mode a created display-format can be selected as print-format, reduced to the min. print size and print options like STARTtime, print interval and STOtime defined.

In the [DataLog](#) mode voyage relevant data can be selected for storage in the **USER-PC** – not **SYSTEM-PC** – together with the storage path and file name, STARTtime, storage interval and the STOtime.

The information column is indicating the respective status of printing and data storage.

With start-up of the **DATADIS®** software at the **SYSTEM-PC** all relevant data will be automatically stored in a 10 second interval in a predefined circular buffer as daily file for at least three (3) months and can be called off by the **SYSTEM-PC** and all via **ETHERNET LAN** connected **DATADIS® USER-PCs** for longterm data presentation and for the *Voyage Recorder*.

When exeeding 90% of the haddisc capacity the oldest file in the circular buffer will be deleted automatically by the system!



When activating the **DATADIS® Voyage Recorder** the displayed **Online** data will be replaced by the buffered data of the **SYSTEM-PC** over the past hour (ΔT) or of a defined period.
 The reference date & time will be indicated **red/cursive** in the information column below the ships name!

A **DATADIS® Screensaver**, which receives all **DATADIS®** data via the communication module, displays the ship's UTC date & time and monitors the trouble-free operation of the system even in the screensaver mode!
(System Alive Function !)

To use this function a screensaver mode is NOT to be selected at the **SYSTEM-PC** and the **DATADIS® Screensaver** is to be selected at the **USER-PC**!
 The **DATADIS®** software including **World Shore Lines** is designed for data presentation and documentation and not for navigational use!

