

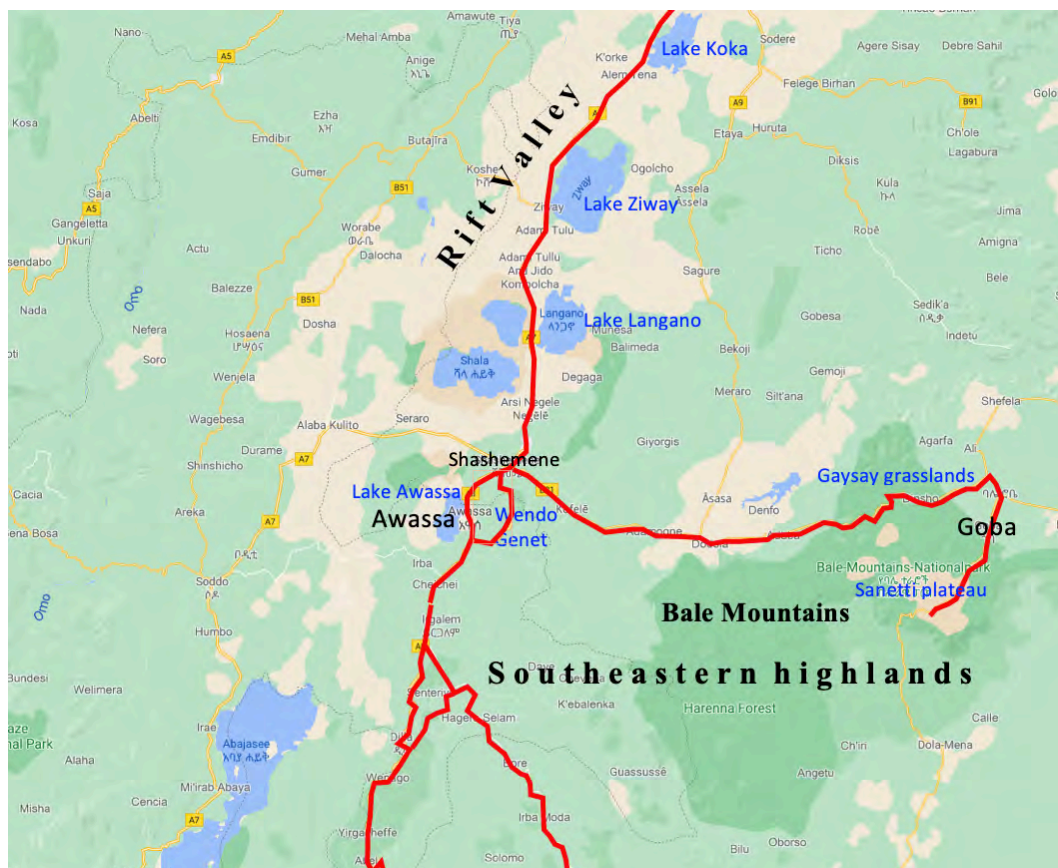
Ethiopia

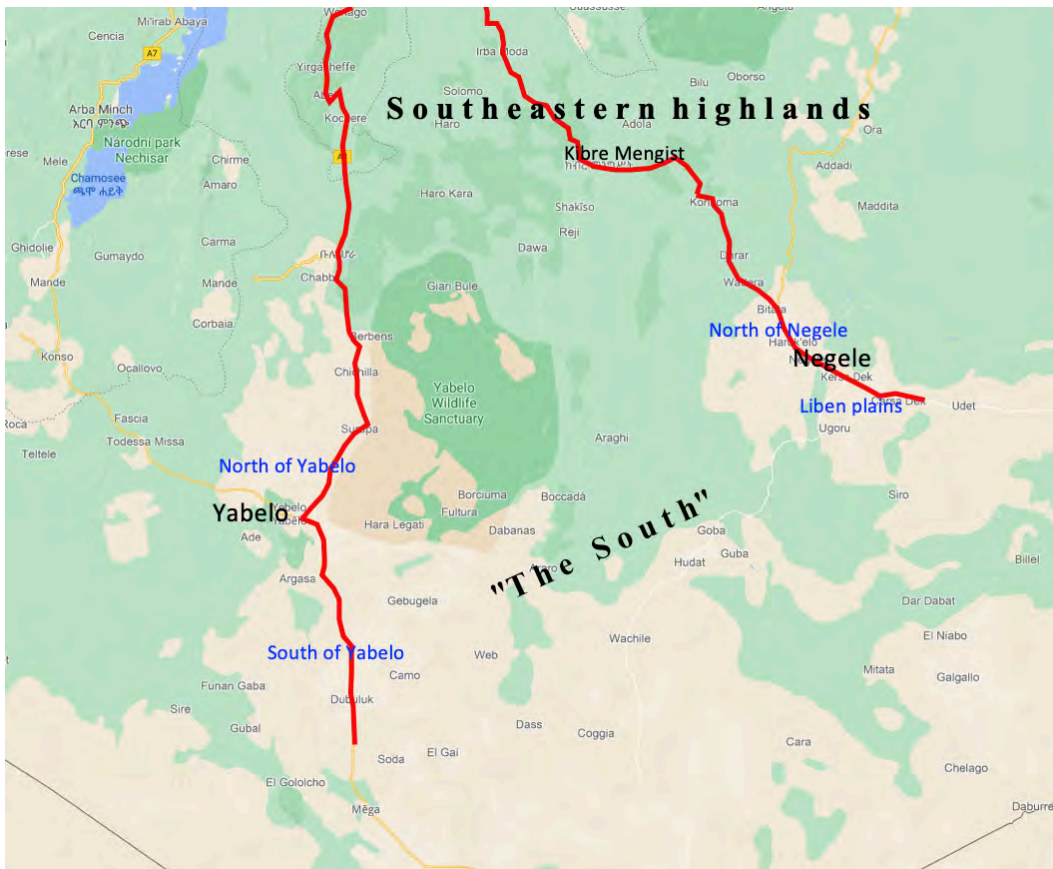
from 24th November to 11th December 2020



Trip report of Hanspeter Bieri and Michael Widmer

Itinerary





- 24.11.2020 Addis Abeba (Bole airport) – Sululta – Maketuri – Debre Libanos (110 km)
- 25.11.2020 Debre Libanos – Maketuri – Lemi (75 km)
- 26.11.2020 Lemi – Deneba – Mendida – Debre Birhan (90 km)
- 27.11.2020 Debre Birhan – Ankober Mts. (viewpoint Gemassa Gedal) – Debre Birhan – Addis Abeba – Bishoftu (255 km)
- 28.11.2020 Bishoftu – Adama – Metahara – Awash falls lodge (165 km)
- 29.11.2020 Full day within Awash NP (ca. 15 km)
- 30.11.2020 Awash falls lodge – Awash town – Adama – Lake Koka reservoir (Awash bridge) – Liben lodge at Lake Ziway (240 km)
- 01.12.2020 Lake Ziway – Shashemene – Dondola – Gaysay grasslands – Dinsho – Robe – Goba (310 km)
- 02.12.2020 Goba – Sanetti plateau – Goba; full day within Bale Mountains NP (70 km)
- 03.12.2020 Goba – Robe – Dinsho – Gaysay grasslands – Dondola – Shashemene – Awassa (230 km)
- 04.12.2020 Awassa – Hagere Selam – Kibre Mengist – Konkoma – Wadera – Bitata – Negele (315 km)
- 05.12.2020 Negele – Liben plains – Carsa Dek – Negele – few km north of Negele – Negele (ca. 80 km)
- 06.12.2020 Negele – Kibre Mengist – Hagere Selam – Aleto Wendo – Dilla – Yirgacheffe – Yabelo (470 km)
- 07.12.2020 Yabelo – Dunduluk – south in direction to Kenyan border – Yabelo – few km north of Yabelo – Yabelo (ca. 200 km)
- 08.12.2020 Yabelo – Agere Maryam – Yirgacheffe – Dilla – Wendo Genet (300 km)
- 09.12.2020 Wendo Genet – Shashemene – Sabana beach resort at Lake Langano (70 km)
- 10.12.2020 Lake Langano – Lake Ziway (Liben lodge) – Lake Koka reservoir (Awash bridge) – Bishoftu – Addis Abeba (Bole airport) (205 km)

Total ca. 3200 km

Diary

Monday – 23.11.2020

Flight with LH 5779 from Zürich (17:45) to Frankfurt/Main (18:55) and then with Ethiopian Airlines (LH9694) (21:35) to Addis Abeba. Because of the Tigray conflict in the north, our airplane made a detour and flew instead via Sudan – Eritrea along the Red Sea coast via Jeddah (Saudi Arabia) – Djibouti.

Tuesday – 24.11.2020

Arrival at Bole airport in Addis Abeba (6:25). Everything was perfect and our Covid Test was accepted. But shortly before the exit of the airport we got into another customs control and then we had the worst nightmare for any birdwatcher: They confiscated our binoculars! All negotiation skills of our Ethiopian travel guide Meseret were of no use and our binoculars and a telescope disappeared in a storage room. Luckily Meseret had two binoculars that he could borrow us and luckily, we were allowed to keep our photo equipment.

Car drive from Bole airport through the crowded capital city and further along the main road A3 to the Sululta plains. Lunch in Restaurant Tobiya Resort. Birding in the Sululta plains. Drive along the road A3 via Maketuri to Debre Libanos with various observation stops en route. Dinner and overnight stay in Ethio-German Hotel near Debre Libanos (2520 m) with spectacular view to the Blue Nile Gorge.

Weather: Partly cloudy, more clouds in the afternoon. Clearing up and sunny in the evening. In the night windy.



The impressive cliffs of Debre Libanos with a spectacular view to the Blue Nile Gorge.

Wednesday – 25.11.2020

Early morning excursion (very cold!) to the famous Portuguese bridge near our hostel. Breakfast birdwatching with spectacular view to the Blue Nile Gorge. Morning excursion to the remnant patches of montane forest near the monastery of Debre Libanos. After lunch long car drive along the road A3 to Maketuri and from there on an unpaved road through the cultivated landscape of the northwestern highlands. We made several observation-stops en route (i.a. once with an unforgettable experience with a spotted hyaena). In the late afternoon we reach the village of Lemi (Amhara province). Dinner and overnight stay in Tigist Hotel in Lemi (2650 m).

Weather: In the early morning very cold! During daytime partly cloudy; short but heavy rain shover in the evening in Lemi.

Thursday – 26.11.2020

Early morning birdwatching in Jemma valley few km north of Lemi. Long drive on an unpaved road to Deneba and Debre Birhan through remote areas with traditional agriculture. Everywhere we saw people harvesting and threshing the teff grass. We made several observation-stops, mainly in wetlands and along rivers. Dinner and overnight stay in Eva Hotel in Debre Birhan (2820 m).

Wheater: In the morning partly cloudy and sunny; more clouds in the afternoon.



The "Grand Canyon of Ethiopia" near Lemi in Amhara province.



Always worth for a short stop for birding: A river in the northwestern Ethiopian plateau.



*During the first days, while crossing the northwestern highland plateau we saw everywhere people harvesting teff *Eragrostis tef*, an annual grass, native to the Horn of Africa. The smallest grain in the world (seed size 1 mm!) is an important element in the traditional diets of Ethiopia, where it's most commonly ground into flour and served as "injera", Ethiopia's national dish. We have eaten this flatbread nearly every day. The harvest is done by hand with the sickle (above), the threshing is done with oxen (below).*

Friday – 27.11.2020

Early departure towards the Ankober Mountains along the main road A2 from Debre Birhan via Gudo Beret to the viewpoint Gemassa Gedal, 12 km southwest of Debre Sina. Unsuccessful search for Ankober Serin. Afterwards return to Debre Birhan (90 km). Short stop by some Rüppell's Vultures on a dead donkey shortly after Debre Birhan. Afterwards long car drive on the main road A2 to Addis Ababa (a lot of traffic) and further to Bishoftu (former name Debre Zeyit). The town is located within the Bishoftu volcanic field, an area of lava flows, cinder cones, tuff rings and maars. Several of the maars are water-filled, forming five crater lakes, i.a. Lake Bishoftu, Lake Hora and the seasonal Lake Chelekleka. Dinner and overnight stay in Dreamland Hotel in Bishoftu (1900 m) with a great view down to Lake Bishoftu.



"Birding in the mist". At the viewpoint Gemassa Gedal the weather-condition are often a problem. When the hot air from the Danakil Depression far below meets the colder air of the plateau, thick cloud often forms, ensuring that the vegetation clinging on to the edge of the escarpment remains lush year-round.

Weather: Unfortunately very foggy in the morning with a visibility of less than 20 m in the Ankober mountains. From Debre Birhan to Addis Abeba cloudy; in the late afternoon clear and sunny and in Bishoftu warmer than the days before.



An unknown member of the family Lamiaceae (presumably Stachys; left) and Haplocarpha rueppelii, an endemic of the highlands of eastern Africa (right), from Gemassa Gedal (3250 m) in the Ankober mountain range.

Saturday – 28.11.2020

Early morning birdwatching at Lake Chelekleka. Breakfast birdwatching from the terrace of Dreamland Hotel with good view to Bishoftu Lake and the surrounding vegetation. Another excursion takes us to Lake Hora. Afterwards long car drive on the motorway to Adama and then further along the main road A1 through the Rift Valley to Awash NP (several serious car accidents seen). Several observation-stops en route, including in the extensive lava fields west of Metehara and south of the volcano Fantale. In the afternoon birdwatching within Awash NP (from the entrance to Awash falls and around Awash falls lodge). Dinner and overnight stay in Awash falls lodge, Awash NP (950 m).

Weather: Early in the morning sunny but later mostly cloudy



Shortly after sunrise, we were able to observe a large number of water birds at Lake Chelekleka (above) as for example White-faced and Fulvous Whistling-ducks, Red-billed Teal and Red-knobbed Coot (below).



In the Rift Valley the traces of vulcanism are unmistakable. Near Metehara and south of the volcano Fantale we saw huge lava fields that stretched to the horizon. On this picture a small section of a vegetated lavafield from above.



The Awash falls at the southern border of the Awash NP in the evening light. In the nearby Awash falls lodge, we spent two nights.

Sunday – 29.11.2020

Early morning excursion on foot from Awash falls lodge along the Awash river and nearby gallery forest. After breakfast, full-day excursion by car through the the southern part of the Awash NP (*Acacia-Commiphora* savannah). Dinner and overnight stay in Awash falls lodge, Awash NP (950 m).

Wheater: *Heavily cloudy and unfortunately bad light conditions for taking photos the whole morning. In the late afternoon clearing up, sunny and warm. In the evening no clouds and full moon.*



Open Acacia-Commiphora savannah in Awash NP.



It is sad but true. Goats and other livestock are the most common mammals in Awash NP. Uncontrolled they graze the barren vegetation and are a great competition for the local wild animals.

Monday – 30.11.2020

Early breakfast at 6:30 followed by birdwatching along the dirt road to the park entrance and further on the main road to Awash Town, searching for *Hamadryas Baboon*. Then a long car drive along the main road A1 via Adama – Mojo and then along the main road A7 to the Liben lodge, situated near the village Meki on the north-western coast of Lake Ziway. Several short stops en route, including a longer observation stop at Awasah bridge near Lake Koka reservoir. In the afternoon extensive birdwatching in the hotel gardens of Liben lodge, from where we had a great view of the coast of Lake Ziway. Dinner and overnight stay in Liben lodge (1645 m).

Wheater: *In contrast to the last day only few clouds; sunny and warm*



*The Liben Lodge was a perfect place for birdwatching due to its location directly on Lake Ziway shoreline and due to the beautiful gardens with lush vegetation. On the picture one can see nests of the White-browed Sparrow-weaver *Plocepasser mahali*.*



*A fisherman on Lake Ziway (440 km²). Unfortunately the lake is severely infested by the Water hyacinth *Eichhornia crassipes*, one of the world's most invasive weeds.*

Tuesday – 01.12.2020

Early morning birdwatching at Liben Lodge (waterfowl, garden birds) on Lake Ziway. Drive along the main road A7 through the Rift Valley to Shashemene. From there we drove along the B81 to Dodola (lunch) and further on the B90 to Dinsho and later to Robe-Goba (sometimes very bad road conditions). Between Adaba and Dinsho we crossed a mountain ridge at an altitude of 3600 m (see pictures below). Apart from a few short stops, we made a longer observation stop on the Gaysay grasslands in the Bale Mountains NP, west of the city of Dinsho. Dinner and overnight stay in Wabe Shebelle Hotel in Goba (2660 m), where, as almost always, we are the only guests!

Wheater: *Few clouds in the morning, more clouds in the afternoon and short rain shower in the evening at Goba.*



Typical landscape along the main road B90 between Adaba and Dinsho at an altitude of ca. 3500 m. Grain is grown here up to great heights or almost to the mountain peaks!

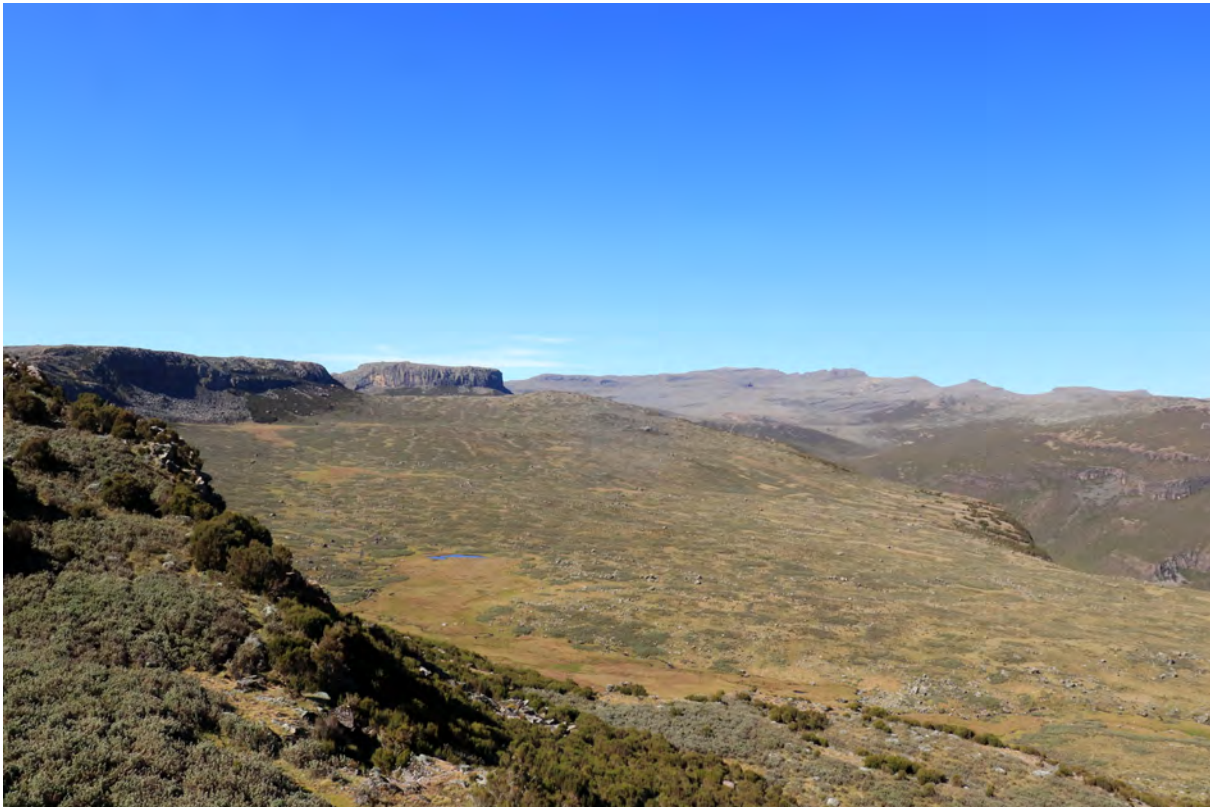


Two girls from the southeastern highlands. At this altitude (ca. 3500 m) it is better to be warmly dressed.

Wednesday – 02.12.2020

Full-day excursion to the famous Sanetti plateau. In the early morning we left Goba, the road climbed, we first passed juniper forests later subalpine dwarf bushes and finally we reached the treeless Sanetti plateau, a breathtaking landscape. In the crystal-clear mountain air, we enjoyed close views to the Ethiopian Wolf and several other highlights. After the street has reached the highest point at 4110 m we drove back (Michael have got altitude sickness). In the late afternoon, after a short break in the hotel, we did some birdwatching within the hotel garden. Dinner and overnight stay in Wabe Shebelle Hotel in Goba (2660 m).

Wheater: *We were lucky and we had good weather and optimal light conditions on the Sanetti plateau. In the afternoon it becomes more cloudy, but no rain.*



Ethiopia is a country of contrasts and dramatic scenery. The view across the Sanetti Plateau is jaw-dropping!



Helichrysum spec. (left) and Sedum mooneyi (right) are high-altitude plants of the Sanetti plateau in Bale Mountains NP.



*Due to the high altitude, the plant diversity on the Sanetti plateau is low. However, one of the notable plant species is the Afroalpine giant lobelia *Lobelia rhynchopetalum*, growing to a maximum height of 6 m. The plant is frost tolerant and has an up to two-meter-tall unbranched stem with a large pith and thick and leathery leaves, which are suggested to be adaptations to the high altitude tropical environment. Once the plant has flowered and set seeds, it dies, leaving a tall hollow and dried-out stem.*



Extensive glaciers covered the Sanetti Plateau during the last Ice Age. At an altitude of over 4000 m, many freshwater bodies bear witness to this time. In the background you can see the highest peak (Mount Tullu Dimtu 4377 m) of the Bale Mountains or the southeastern Ethiopian highland plateau respectively.



St John's wort Hypericum revolutum is a characteristic small tree (!) of the Afromontane vegetation. We found them along the road from Goba to the Sanetti plateau and along the mountain ridge between Dinsho and Dodola.



Another special high-altitude plant species of the Bale Mountains was the Torch lily Kniphofia foliosa.

Thursday – 03.12.2020

Early breakfast at 6:30 and afterwards long drive back (road B90 and B81) from Goba via Robe – Dinsho – Dodola (lunch time) back to Shashemene in the Rift Valley. Longer observation stays in the Gaysay grasslands and later in a nearby wetland and shorter stop en route. Our destination today was Awassa, a town situated on the lake with the same name. Here, the Wabe Shebelle Hotel – our planned accommodation – or the entire hotel complex was under water, due to the constantly rising water level of the Lake Awassa. As an alternative we moved to the hotel Lake View (big comfortable rooms with water and electrical power; a paradise after a week with very basic accommodations). Afternoon birdwatching along the shoreline of Lake Awassa and within the flooded hotel complex. Dinner and overnight stay in Lake View Hotel in Awassa (1695 m).

Weather: Partly cloudy, hot and hazy in the Rift Valley. In the evening light rain over Awassa.



*The Gaysay grasslands belong to the Bale Mountains NP and are situated within a broad flat valley at an altitude of 2600–3000 m. The area is dominated by swamp grasses and sedges and by the African Wormwood *Artemisia afra* (in the foreground). The Gaysay grasslands are the best place for observing the endemic Mountain Nyala and other big mammals.*



Extensive Juniper forests grow on the slopes, south of the Gaysay grasslands.

Friday – 04.12.2020

Today is Turaco day! Early morning birdwatching over breakfast in front of Lake View Hotel. Afterwards very long car drive from Awassa via Hagere Selam – Bore – Kibre Mengist (lunch) – Sciacchiso – Konkoma – Wadera – Bitata to Negele. The very winding side road (D82) leads us through varied landscapes and we made several observations stops (farmland, montane forest, acacia woodland). In the vicinity of Konkoma and north of Wadera we successfully looked for the Ruspoli's Turaco. Dinner in the restaurant of hotel Shabii in Negele; overnight stay in Turaco Hotel (1520 m).

Weather: Partly cloudy and sunny



In this varied landscape along the D82 road (northwest of Konkoma) with arable land and forests we could find the endemic Ruspoli's Turaco, which to some extent can tolerate the presence and activity of humans in its habitat.



Huge termite mounds determine the landscape in the south.



A big majestic Euphorbia-tree north of Negele.

Saturday – 05.12.2020

Early in the morning we drove on a gravel road towards the rising sun. After several short observation stops we reached the Liben plains, an extensive area of flat land that stretches east and south of Negele. On a last patch with higher grass vegetation supported by a local guide and many children we heard and observed the very rare Liben Lark singing in the sky. Afterwards we drove along the road D82 further to the east until Carsa Dek, where we successfully tracked down the Salvadori's Seedeater in open acacia thornbush. Then we returned back to Negele. In the afternoon short birding tour along the road north of Negele. Lunch and dinner in the restaurant of hotel Shabii in Negele; overnight stay in Turaco Hotel (1520 m).

Weather: *Partly cloudy all day but sunny and warm.*



*Population growth, overgrazing, in addition to drought and soil erosion among others, has meant that only a small fraction of the original grasslands remain, the breeding ground of the critically endangered Liben Lark *Heteromirafra archeri*, surely the rarest bird species that we have ever seen in our life.*



Ipomoea spec. belongs to the morning glory family Convolvulaceae (above), Blepharis spec. (boranensis?) is a representative of the Acanthaceae (below). Both species were found on the Liben plains.



The Liben plains are an extensive area of flat land that stretches east and south of Negele. Here, a small village of pastoralists with traditional houses, not far away from the Lark site.



In dense acacia woodland – east of the Liben plains – we successfully looked for another rarity, the Salvadori's Seedeater.

Sunday – 06.12.2020

From Negele we drove all the way back along the road D82 to Kibre Mengist (lunch in the same restaurant as 4.12.) an further via Bore – Hagere Salam to Aleto Wendo. From there we took a dirt road to Dilla and drove from there on the main road A8 via Yirga Cheffe to Agere Maryam and from there further along the road C80 via Finchawa to Yabelo. Apart of a longer birdwatching stop ca. 15 km north of Yabelo, we spent nearly the whole day in the car. Dinner and overnight stay in Yabelo Motel in Yabelo (1640 m).

Weather: Partly cloudy all day. Short rain shower at ca. 15:00.



In the Awash NP in the north and in the regions around Negele and Yabelo in the south we were in the *Acacia-Commiphora* savannah, an ecoregion that occupies most of the Horn of Africa east and south of the Ethiopian Highlands. The predominant trees are deciduous species of *Commiphora* and *Acacia*, like this Umbrella thorn acacia *Acacia tortilis* (syn. *Vachellia tortilis*).



Many acacia trees has very long spines or thorns as defence against mammalian herbivores.

Monday – 07.12.2020

We spent the whole day in the Yabelo area. In the morning we explored the savannah south of Yabelo along the road C80. Between Dunduluk and Mega (4°18'N / 38°16'E), ca. 60 km away from the Kenyan border we reached the southernmost point of our journey. Then we returned to Yabelo in the early afternoon. At the end of this very successful day we went on a shorter excursion to an area north of Yabelo. Dinner and overnight stay in Yabelo Motel in Yabelo.

Weather: In the morning sunny and warm. In the afternoon partly cloudy and short rain shower at ca. 17:00



The area around Yabelo is notable for its red soils which have little organic matter.



Barleria delamerei, a representative of the Acanthaceae (above left), one of over 40 species of the genus Aloe known in Ethiopia (below left) and Hibiscus flavifolius (right). All three species were found south of Yabelo.

Tuesday – 08.12.2020

Early departure in Yabelo (6:30 am) and long drive with several stops along the main road C80. Breakfast at Agere Maryam. Another long car drive along the main road A8 almost to Awassa and from there on a side street to Wendo Genet. Late-afternoon birdwatching excursion with a local guide who took us to the secondary forest and thermal springs above Wendo Genet. After dinner we made a short night excursion within the area of the hotel. Overnight stay in Wabe Shebelle Resort hotel in Wendo Genet (1880 m).

Weather: *In the morning at 6:00 short but heavy rain shower, then the whole day with passing cloud fields sunny and moderately warm.*

Wednesday – 09.12.2020

Very successful early-morning birdwatching tour with our excellent local guide "Mecenen" (?) through the degraded forests above Wendo Genet. After breakfast, long car drive to Shashemene and from there along the main road A8 to Lake Langano. Already in the early afternoon we reach our next accommodation, the Sabana beach resort. Afternoon birdwatching within the gardens of the beach resort and walk to Lake Langano and back. Dinner and overnight stay in Sabana beach resort (1600 m).

Weather: *Nice and hot with only a few clouds. The warmest day so far.*



Large parts of the forests around Wendo Genet were destroyed and degraded in the last decades.



Small forest river near Wendo Genet. Breeding habitat of the Half-collared Kingfisher and the Mountain Wagtail.

Thursday – 10.12.2020

Early-morning excursion within the area of the Sabana beach resort lodge down to Lake Langano and the same way back. After breakfast long car drive along the main road A7 through the Rift Valley via Lake Ziway (observation stop at the already known Liben lodge) to the Awash bridge near Lake Koka reservoir. From there we took a side road who brought us to Bishoftu. From there we drove along the main road to Addis Abeba (arrival at Bole airport at 17:30). Farewell to Meseret, our guide, who led us through Ethiopia for 3 weeks in a not entirely harmless time (were we the only tourists?). After an endlessly long wait with no food and nearly no water in the arrival hall of Bole airport, we finally got our binoculars and our telescope back shortly before midnight.

Weather: *Nice and warm with only a few clouds.*



The Lake Langano (230 km²) has because of its high mineral and sulpher content a milky brown colour and is free of Bilharziose.



What a beautiful light during our last early morning birdwatching. The cliffs near Sabana beach resort at Lake Langano are home of a breeding colony of Rock Martins and the habitat of the Abyssinian Wheatear.



Last impressions of a three-week adventurous birdwatching trip through Ethiopia. Huge hay sticks and traditional houses that look very similar (above) and a group of shepherd boys with donkeys and sheep (below).

Friday – 11.12.2020

With Ethiopian Airlines (OS 7152) we flew from Addis Abeba (1:35) via Sudan – Egypt – Crete to Vienna (5:55) and after a short stopover (7:40) with Austrian Airlines (OS 561) along the Alps to Zurich (9:05).

Species list

Birds

Sequence and taxonomy after DEL HOYO, J. ed. (2020): All the Birds of the World; Lynx Edicions, Barcelona (HBW-List). Deviations from the IOC World bird list are specially marked (IOC-List). Reference book and field guide: REDMAN, N., STEVENSON, T. & J. FANSHAW (2016): Birds of the Horn of Africa. Helm Field Guides, Christopher Helm, London (2nd edition).

Somali Ostrich – Somalistrauss – *Struthio molybdophanes*

1 male (very briefly courtship-display seen) and 3 females in acacia woodland south of Yabelo.

Helmeted Guineafowl – Helmpferlhuhn – *Numida meleagris*

A small group of ca. 5 Ind. seen and heard (already during the night) at Awash falls lodge and ca. 10 Ind. observed within the garden of Wabe Shebelle hotel area in Awassa.

Harwood's Francolin – Harwoodfrankolin – *Pternistis harwoodi* – **endemic to Ethiopia**

2 Ind. very briefly but well seen in the Jemma Valley.

Scaly Francolin – Schuppenfrankolin – *Pternistis squamatus*

2 Ind. in dense undergrowth of forest and the following morning a single Ind. seen at Wendo Genet.

Yellow-necked Francolin – Gelbkehlfrankolin – *Pternistis leucoscepus*

1 pair well seen while sand bathing in Awash NP and in total 5 Ind. in dry acacia woodland east of Negele.



Only few seconds of our life but we got it, a male of the very rare and endangered Harwood's Francolin.



A male Yellow-necked Francolin in Awash NP.



A pair (male in the foreground) of **Crested Francolins** in Awash NP.



The **Chestnut-naped Francolin** inhabits also moorland above the treeline as here in Bale Mountains NP.

Chestnut-naped Francolin – Braunnackenfrankolin – *Pternistis castaneicollis* – endemic to the Horn of Africa

A group of 1 male and 2 females seen below Sanetti plateau in Bale Mountains NP (ca. 3400 m).

Erckel's Francolin – Erckelfrankolin – *Pternistis erckelii* – near endemic to the Horn of Africa

In total ca. 20 Ind. seen or heard in Lemi area (Jemma Valley and Lemi cliffs) and a further observation of a single Ind. along the road A2 between Debre Birhan and Debre Sina in Ankober mountain range.

Crested Francolin – Schopffrankolin – *Dendroperdix sephaena*

In total 2 pairs seen within Awash NP.

Moorland Francolin – Hochlandfrankolin – *Scleroptila psilolaema*

2 males seen while fighting in a grain field 5 km southwest of Mendida in the northwestern highlands.

White-faced Whistling-duck – Witwenpfeifgans – *Dendrocygna viduata*

Ca. 30 Ind. on Lake Chelekleka near Bishoftu, > 100 Ind. on Lake Ziway and ca. 20 Ind. near Awash bridge on Lake Koka.

Fulvous Whistling-duck – Gelbbrust-Pfeifgans – *Dendrocygna bicolor*

Ca. 30 Ind. on Lake Chelekleka near Bishoftu and ca. 50 Ind. on Lake Ziway.

Egyptian Goose – Nilgans – *Alopochen aegyptiaca*

Widespread observations in small numbers (sometimes families with juveniles) in all small wetlands in the northwestern highlands, in all visited Rift Valley lakes and in the south in the vicinity of Negele.



White-faced Whistling-ducks at Lake Ziway.

Ruddy Shelduck – Rostgans – *Tadorna ferruginea*

Twice 1 pair (probably the same) on Sanetti plateau (ca. 3800 m) in Bale Mountains NP.

Spur-winged Goose – Sporengans – *Plectropterus gambensis*

Small numbers on Lake Chelekлека near Bishoftu, at Awash bridge near Lake Koka and on Lake Ziway.

African Comb Duck – Glanzente – *Sarkidiornis melanotos*

Max. 30 Ind. on Lake Ziway.

African Pygmy-goose – Afrikazwergente – *Nettapus auritus*

4-5 Ind. in front of Liben lodge on Lake Ziway.

Blue-winged Goose – Blaüflügelgans – *Cyanochen cyanopterus* – endemic to Ethiopia

Several observations (mostly single pairs) of this endemic species in different small wetlands in the northwestern and southeastern highlands (including 1 pair on Sanetti plateau in Bale Mountains NP).



The pale blue wing-coverts are a diagnostic feature of the endemic Blue-winged Goose.

Hottentot Teal – Pünktchenente – *Spatula hottentota*

Ca. 20 Ind. on Lake Chelekлека near Bishoftu and 2 Ind. on Lake Ziway.

Northern Shoveler – Löffelente – *Spatula clypeata*

3 Ind. on the Sululta plains and ca. 20 Ind. on Lake Chelekлека near Bishoftu.

African Black Duck – Schwarzente – *Anas sparsa*

Beautiful observation of this rare species: Twice 1 pair along small rivers in the northwestern highlands between Deneba and Debre Berhan.

Yellow-billed Duck – Gelbschnabelente – *Anas undulata*

Ca. 50 Ind. on the Sululta plains, ca. 10 Ind. on Lake Chelekleka near Bishoftu and ca. 15 Ind. on Sanetti plateau in Bale Mountains NP.

Red-billed Duck – Rotschnabelente – *Anas erythrorhyncha*

Ca. 15 Ind. on Lake Chelekleka near Bishoftu.

Little Grebe – Zwergtaucher – *Tachybaptus ruficollis*

Several observations in small wetlands in the northwestern (e.g. 1 ad. and 1 juvenile on the Sululta plains) and southeastern highlands. Commonly encountered on several lakes (up to 100 Ind. on Lake Bishoftu and Lake Chelekleka near Bishoftu; ca. 10 Ind. on Lake Ziway). In the south only one observation of 3 Ind. on a pond near Negele.

Rock Dove – Felsentaube – *Columba livia*

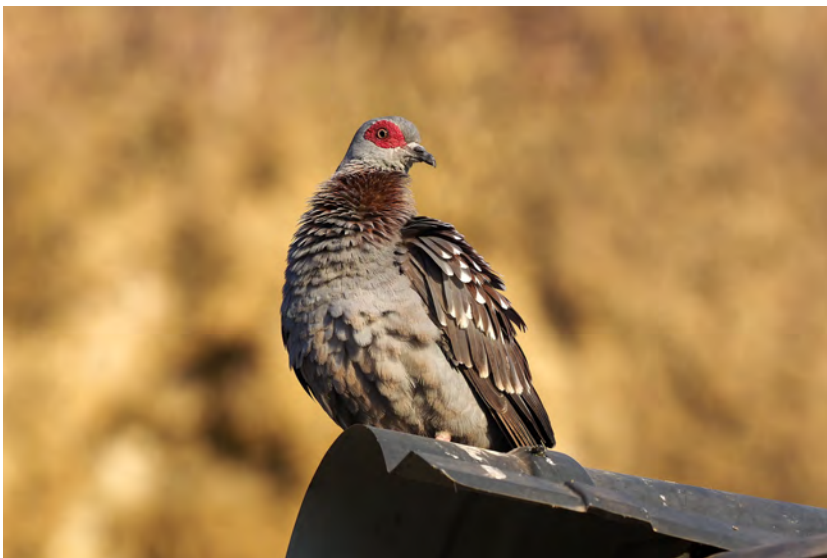
Ca. 10 Ind. in Yabelo town and few Ind. En route in the Rift Valley.

Speckled Pigeon – Guineataube – *Columba guinea*

Widespread sightings in small numbers throughout the tour, preferably near human settlements.

White-collared Pigeon – Weissringtaube – *Columba albitorques* – [endemic to the Horn of Africa](#)

Widespread sightings (flocks up to 40 Ind.) of this endemic species in the western and southeastern highlands (including Bale Mountains NP). Absent in the Rift Valley and in the south (Negele, Yabelo).



The Speckled Pigeon, a common and widespread species, occurring also near human settlements.



The White-collared Pigeon, a commonly encountered endemic in the highlands, but absent elsewhere.



The **Mourning Collared-dove** or **African Mourning Dove** has a very distinctive call: a descending rolling "churr rrrrrrooooooo".



The **Laughing Dove**, a widespread species all over Africa, the Middle East and India.

Lemon Dove – Zimttaube – *Aplopelia larvata* (HBW-List) or *Columba larvata* (IOC-List)

1 Ind. on forest floor at Wendo Genet.

Dusky Turtle-dove – Trauerturzeltaube – *Streptopelia lugens*

The first Ind. we have observed already at Bole Airport in Addis Abeba. Further sightings of single Ind. Or pairs in the northwestern and southeastern highlands and at Bishoftu. No observations at lower altitudes in the Rift Valley or in the south.

Mourning Collared-dove – Brillentaube – *Streptopelia decipiens*

Well heard and seen at Liben lodge (Lake Ziway) and at Sabana beach resort (Lake Langano).

Red-eyed Dove – Halbmondtaube – *Streptopelia semitorquata*

We often seen and heard this common species in small numbers throughout the tour.

Ring-necked Dove – Gurrtaube – *Streptopelia capicola*

Well heard and seen only in the south around Negele and around Yabelo.

Laughing Dove – Palmtaube – *Spilopelia senegalensis*

We encountered this species at Bishoftu, in Awash NP, in the south (Negele, Yabelo) and at Sabana beach resort (Lake Langano).

Namaqua Dove – Kaptäubchen – *Oena capensis*

In total ca. 10 Ind. seen in Awash NP; further observations en route in the Rift Valley, as well as near Liben lodge (Lake Ziway) and at Sabana beach resort (Lake Langano).

Tambourine Dove – Tamburintaube – *Turtur tympanistria*

Ca. 5 Ind. heard in secondary forest at Wendo Genet.

Blue-spotted Wood-dove – Stahlflecktaube – *Turtur afer*

1 Ind. heard near Awash falls lodge in Awash NP.

Bruce's Green-pigeon – Waaliataube – *Treron waalia*

At least 1 Ind. in a big fig tree together with Wattled Starlings at Awash bridge near Lake Koka reservoir.

Chestnut-bellied Sandgrouse – Braunbauch-Flughuhn – *Pterocles exustus*

A group of 7 Ind. (males and females) seen from a very short distance in Awash NP.



A group of **Chestnut-bellied Sandgrouse**, seen in Awash NP, was the onliest observation of a member of this bird family.

Abyssinian (Montane) Nightjar – Höhennachtschwalbe – *Caprimulgus poliocephalus*

Single Ind. heard at night from Ethio-German hotel in Debre Libanos (only Michael) and Dreamland hotel above Lake Bishoftu.

Slender-tailed Nightjar – Kurzschleppen-Nachtschwalbe – *Caprimulgus clarus*

Heard at night and presumably seen early in the morning at Liben lodge (Lake Ziway); 4 flying Ind. at Sabana beach resort at dusk belong most likely to this species.

African Palm-swift – Palmensegler – *Cypsiurus parvus*

1 Ind. of this very fast-flying Swift-species seen in the Jemma Valley, further observations of up to 10 Ind. in Awash NP.

White-rumped Swift – Kaffernsegler – *Apus caffer*

Ca. 20 Ind. at Lake Chelekleka near Bishoftu and probably 2 Ind. at Awash falls.

Alpine Swift – Alpensegler – *Tachymarptis melba*

A single observation of 1 Ind. flying along the cliffs of Debre Libanos.

White-bellied Go-away-bird – Weissbauch-Lärmvogel – *Criniferoides leucogaster*

Widespread sightings in small numbers (daily maximum 6 Ind.) in Awash NP, around Negele and in Yabelo area, at Wendo Genet and at Sabana beach resort (Lake Langano).

Eastern Grey Plantain-eater – Bindenlärmvogel – *Crinifer zonurus*

In total 6 Ind. in acacia woodland within Awash NP.

Brown-faced Go-away-bird – Braungesicht-Lärmvogel – *Coryth. personatus* – endemic to Ethiopia – HBW-List**Bare-faced Go-away-bird – Nacktgesicht-Lärmvogel – *Corythaixoides personatus ssp. personatus* – IOC-List**

2 Ind. in acacia savanna 15 km south of Finchawa along the road C80 to Yabelo.

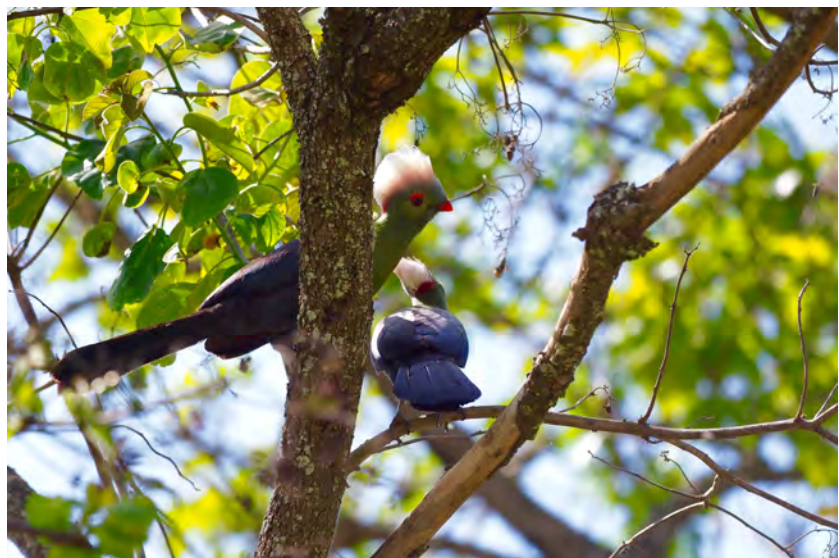
The **White-bellied Go-away-bird** was the most common representative of the *Turaco* family.



A **White-cheeked Turaco** of the nominate subspecies *leucotis* feeding on fig fruits in a remnant patch of montane forest near Debre Libanos.



The charismatic **Ruspoli's Turaco** is endemic to southern Ethiopia, where its range may be smaller than 8'000 km².



White-cheeked Turaco – Weissohrturako – *Tauraco leucotis* – near endemic to the Horn of Africa

We have seen 3 Ind. in a remnant patch of montane forest near Debre Libanos, in total 3 Ind. en route at two sites in montane forest along the road D82 (14 km NW Kibre Mengist and 5 km E Sciacchiso) and three times 1 Ind. each in montane forest at Wendo Genet.

Ruspoli's Turaco – Ruspoliturako – *Tauraco ruspolii* – endemic to Ethiopia

Beautiful observation (see also title page) along the road D82 to Negele: one pair 12 km north of Konkoma and 3 Ind. 2.5 km north of Wadera.

Blue-headed Coucal – Mönchskuckuck – *Centropus monachus*

Presumably heard near Debre Libanos and in Awash NP; surely 3 Ind. seen in Wabe Shebelle hotel area in Awassa.

White-browed Coucal – Weissbrauenkuckuck – *Centropus superciliosus*

Three times single Ind. in Awash NP (once very close near the park entrance) and 2 Ind. east of Negele.

Great Spotted Cuckoo – Häherkuckuck – *Clamator glandarius*

Only a single observation of 1 Ind. in acacia woodland south of Yabelo.



The **Kori Bustard** is the largest flying bird of Africa.



The much more smaller **Buff-crested Bustard** is a bird of arid and semiarid bushland, widespread all-over Eastern Africa.

Klaas's Cuckoo – Klaaskuckuck – *Chrysococcyx klaas*

Hanspeter saw 1 Ind. en route along the road from Yabelo to Shashemene.

Kori Bustard – Riesentrappe – *Ardeotis kori*

1 female east of Negele and 3 Ind. (including 1 adult male) in cultivated land ca. 10 km north of Yabelo

Buff-crested Bustard – Oustalettrappe (Äthiopientrappe) – *Lophotis gindiana*

Excellent observation of ca. 4 singing and displaying males in Awash NP (<https://www.xeno-canto.org/613356>) and 1 male seen south of Yabelo.

Black Crowned-crane – Kronenkranich – *Balearica pavonina*

1 pair (30.11.) and 1 pair with juvenile (10.12.) in wetlands along road A7 near Awash bridge at Lake Koka.

Wattled Crane – Klunkerkranich – *Buggeranus carunculatus*

Beautiful observation of 1 pair on the Sanetti plateau in Bale Mountains NP.

Common Crane – Kranich – *Grus grus*

A group of 7 ad. and 1 immat. Ind. of this palaeartic winter visitor seen in cultivated land somewhere en route between Deneba and Mendida in the northwestern highlands and once heard at Lake Ziway.

Rouget's Rail – Rougetralle (Äthiopienralle) – *Rougetius rougetii* – endemic to the Horn of Africa

1 pair below the Sanetti plateau and a further pair in Gaysay grasslands in Bale Mountains NP.

Common Moorhen – Teichhuhn – *Gallinula chloropus*

1 Ind. heard at Lake Hora, near Bishoftu.



The **Black Crowned-crane** is distinguished from the Grey-headed Crowned-crane by darker neck, smaller wattles, and much more red in the cheek patch.



The **Rouget Rail**, another restricted-range species, occurring only in the Ethiopian highlands.

Red-knobbed Coot – Kammlässhuhn – *Fulica cristata*

Ca. 40 Ind. Lake Chelekлека and 2 Ind. Lake Bishoftu near Bishoftu. Further observations in different wetlands in the southeastern highlands (including one family with juveniles at Gaysay grasslands in Bale Mountains NP).



Marabous are opportunistic feeders and eat a wide variety of foods including carrion and food waste left by people. We observed several breeding colonies in close proximity to human habitations, as here in Awassa town.



This single **Abdim's Stork**, spotted in the Gaysay grasslands in Bale Mountains NP, was too close to take a picture.

Marabou – Marabu – *Leptoptilos crumenifer*

The first Marabus of our trip (ca. 20 Ind.) we have seen at Lake Hora near Bishoftu. The following days we observed large numbers in towns and villages along the Rift Valley (including a breeding colony of ca. 200 pairs in Awassa town;). A flock of ca. 100 Ind. We saw also in the south near Negele.

Yellow-billed Stork – Nimmersatt – *Mycteria ibis*

1 and the following day 2 Ind. at Awash river and ca. 20 Ind. (30.11.) and 10 Ind. (10.12.) respectively at Awash bridge near Lake Koka.

Abdim's Stork – Abdim-Storch – *Ciconia abdimii*

Only once seen: 1 Ind. in Gaysay grasslands in Bale Mountains NP.

African Woollyneck – Afrika-Wollhalsstorch – *Ciconia microscelis* – HBW-List

Woollyneck Stork – Wollhalsstoch – *Ciconia episcopus ssp. microscelis* – IOC-List

Several observations in the southeastern highlands along the road D82 (1 Ind. 4 km north of Bocco and 5 Ind. near Kibre Mengist) and along the road C80 (1 Ind. near Agere Maryam).

European White Stork – Weissstorch – *Ciconia ciconia*

Ca. 10 Ind. in cultivated land few km north of Yabelo and ca. 8 Ind. in Bishoftu area.

African Sacred Ibis – Heiliger Ibis – *Threskiornis aethiopicus*

Widespread sightings in small numbers in the northwestern (daily maximum 30 Ind. on the Sululta plains) and southeastern highlands and along the Rift Valley (Lake Ziway, Awassa).

Hadada Ibis – Hagedasch – *Bostrychia hagedash*

Small numbers at Lake Bishoftu, Chelekleka Lake, Lake Ziway, Lake Awassa, near Wendo Genet and en route in the southeastern highlands and along Rift Valley.

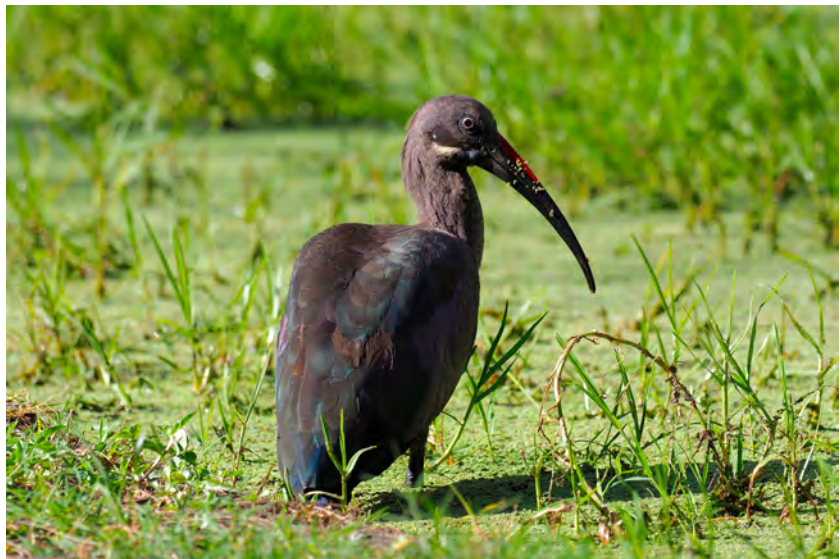
Wattled Ibis – Klunkeribis – *Bostrychia carunculata* – endemic to the Horn of Africa

Frequently seen in wetlands and cultivated land in the northwestern and southeastern highlands (daily maximum 25 Ind. on 2.12.).

The African Sacred Ibis has a completely bare black head and a bare neck. Adults grows black plumes from scapulars and inner secondaries (see picture).



The red culmen and the small malar stripe are diagnostic features of the Hadada Ibis, a species widespread all over Africa.



An extensive white wing-patch and a small wattle hanging from the throat is typical for the endemic Wattled Ibis.





The **Black-headed Heron** is a large, grayish heron with a distinctly dark cap and nape contrasting with a white throat.

Glossy Ibis – Sichler – *Plegadis falcinellus*

1 Ind. Lake Chelekleka near Bishoftu and in total ca. 8 Ind. at Lake Ziway.

Squacco Heron – Rallenreiher – *Ardeola ralloides*

2 Ind. Lake Chelekleka near Bishoftu, 6-10 Ind. at Lake Ziway and 2 Ind. Lake Awassa.

Cattle Egret – Kuhreiher – *Bubulcus ibis*

Widespread sightings in the northwestern and southeastern highlands and along the Rift Valley (daily maximum > 100 Ind. on 30.11.). No observation in the south (Negele and Yabelo area).

Grey Heron – Graureiher – *Ardea cinerea*

Few observations of single birds in wetlands or along small river in the northwestern and southeastern highlands; max. 5 Ind. seen at Lake Ziway.

Black-headed Heron – Schwarzhalsreiher – *Ardea melanocephala*

1 ad. and 1 immat. Ind. Lake Chelekleka near Bishoftu, 1 Ind. in a wetland en route in southeastern highlands and 2 Ind. at Lake Ziway.

Goliath Heron – Goliathreiher – *Ardea goliath*

The world's largest heron: 2 immat. Ind. in wetlands along road A7 near Awash bridge at Lake Koka reservoir.

Purple Heron – Purpurreiher – *Ardea purpurea*

1 immat. Ind. at Lake Hora near Bishoftu and 2 ad. Ind. at Lake Ziway.

Great White Egret – Silberreiher – *Ardea alba*

Small numbers (1-2 Ind.) near Awash bridge at Lake Koka reservoir and at Lake Ziway.

Yellow-billed Egret – Afrikamittelreiher – *Ardea brachyrhyncha* – HBW-List

Intermediate Egret – Mittelreiher – *Ardea intermedia ssp. brachyrhyncha* – IOC-List

1 Ind. on the Sululta plains in the northwestern highlands.

Little Egret – Seidenreiher – *Egretta garzetta*

Small numbers (1-5 Ind.) at different sites: Sululta plains, Lake Hora near Bishoftu, Awash river and Lake Ziway.

Green-backed Heron (Striated Heron) – Mangroveriher – *Butorides striata*

Two times 1 Ind. near Awash river falls, Awash NP.

Hamerkop – Hammerkopf – *Scopus umbretta*

Commonly encountered at any wetland habitat (including lakes) throughout the tour (daily maximum 30 Ind. on 3.12. and 10.12.). No observation in the south (Negele and Yabelo area). In the park of Wabe Shebelle hotel in Awassa we saw 1 Ind. while nest-building.



The widespread **Hamerkop** belongs to a monotypic family restricted to Africa.



A group of **Great White Pelicans** with **African Sacred Ibises** and **Grey-headed Gulls** at Lake Ziway.



Adult and immature **African Darters** together with a **Long-tailed Cormorant** resting along the shoreline of Lake Ziway.

Pink-backed Pelican – Rötelpelikan – *Pelecanus rufescens*

1 immat. Ind. Lake Bishoftu and probably few Ind. seen far away on Lake Ziway.

Great White Pelican – Rosapelikan – *Pelecanus onocrotalus*

2 Ind. at Lake Hora near Bishoftu and big flocks (up to 70 Ind.) seen on Lake Ziway; 1 single Ind. on Lake Langano.

Long-tailed Cormorant – Riedscharbe – *Microcarbo africanus*

Several observations along Rift Valley: Lake Chelekleka near Bishoftu (ca. 20 Ind.), Awash bridge near Lake Koka reservoir (ca. 5 Ind.), Lake Ziway (ca. 10-20 Ind.), Lake Langano (1 Ind.).

Great Cormorant – Kormoran – *Phalacrocorax carbo*

1 Ind. Lake Chelekleka near Bishoftu, ca. 5 Ind. Lake Ziway, 1 Ind. Lake Awassa and ca. 15 Ind. Lake Langano.

African Darter – Afrika-Schlängenhalsvogel – *Anhinga rufa*

Only seen at Lake Ziway: max. 20 Ind. fishing on the shore and resting.

Common Ringed Plover – Sandregenpfeifer – *Charadrius hiaticula*

2 Ind. at Lake Ziway.

Kittlitz's Plover – Hirtenregenpfeifer – *Charadrius pecuarius*

1 immat. Ind. at Lake Ziway.

African Three-banded Plover – Dreiband-Regenpfeifer – *Charadrius tricollaris*

1 Ind. seen at a small river 20 km west of Debre Birhan in the northwestern highlands, 1 Ind. at Awash river and another single Ind. at Lake Ziway.



Already on our third day, we encountered our first **Spot-breasted Lapwings** on a pasture in the northwestern highlands.

Spur-winged Plover – Spornkiebitz – *Vanellus spinosus*

We have seen small numbers on the Sululta plains (ca. 5 Ind.), at Lake Chelekleka near Bishoftu, at Awash river (ca. 10 Ind.), at Lake Ziway and at Awash bridge near Lake Koka reservoir.

Greater Black-winged Lapwing – Schwarzflügelkiebitz – *Vanellus melanopterus*

Ca. 10 Ind. in the Gaysay grasslands in Bale Mountains NP.

Crowned Lapwing – Kronenkiebitz – *Vanellus coronatus*

We have seen 5 Ind. in Awash NP, 30-40 Ind. in Negele area and 4 Ind. south of Yabelo.

Spot-breasted Lapwing – Strichelbrustkiebitz – *Vanellus melanocephalus* – endemic to Ethiopia

We enjoyed close views to this endemic bird twice: 16 Ind. in a mixed flock with Ruffs in a pasture 15 km west of Debre Birhan and further 4 Ind. on the high-altitude Sanetti plateau in Bale Mountains NP.

Black-winged Stilt – Stelzenläufer – *Himantopus himantopus*

Ca. 10 Ind. on a pond near Debre Tsege in northwestern highlands, 2 Ind. at Lake Ziway and another 2 Ind. at Awash bridge near Lake Koka reservoir.

Ruff – Kampfläufer – *Calidris pugnax*

8 Ind. in a mixed flock with Spot-breasted Lapwings in a pasture 15 km west of Debre Birhan; ca. 20 Ind. Lake Chelekleka near Bishoftu and ca. 30 Ind. (30.11.) and ca. 50 Ind. (10.12.) respectively at Lake Ziway.

Temminck's Stint – Temminckstrandläufer – *Calidris temminckii*

2 Ind. (30.11.) and 1 Ind. (10.12.) respectively at Lake Ziway.

African Snipe – Afrikanische Bekassine – *Gallinago nigripennis*

Ca. 10 Ind. on the Sululta plains and 2 Ind. (30.11. & 1.12.) and 1 Ind. (10.12.) respectively at Lake Ziway.

Common Sandpiper – Flussuferläufer – *Actitis hypoleucos*

Widespread sightings of this Palearctic migrant in suitable habitat (including 2 Ind. on the Sanetti plateau in Bale Mountains NP) throughout the tour (daily maximum 10 Ind. on 28. and 30.11.).

Green Sandpiper – Waldwasserläufer – *Tringa ochropus*

Twice 1 Ind. at small rivers in the northwestern highlands, 2 Ind. at Awash river near Awash falls lodge; 1 Ind. at Lake Ziway, 1 Ind. on the Sanetti plateau in Bale Mountains NP and 1 Ind. in Awassa.

Common Greenshank – Grünschenkel – *Tringa nebularia*

Single birds seen on the Sululta plains, at a small river 20 km west of Debre Birham in the northwestern highlands, at Awash river near Awash falls lodge and twice at Lake Ziway.

Wood Sandpiper – Bruchwasserläufer – *Tringa glareola*

1 Ind. at a small river 20 km west of Debre Birham in the northwestern highlands, 2 Ind. at Lake Chelekleka near Bishoftu, 1 Ind. near Yabelo, 1 Ind. Lake Ziway (10.12.).

Marsh Sandpiper – Teichwasserläufer – *Tringa stagnatilis*

1 Ind. (30.11. & 1.12.) and 2 Ind. at Lake Ziway (10.12.).

African Jacana – Blaustirn-Blatthühnchen – *Actophilornis africanus*

Ca. 20 (ad. and immat.) Ind. at Lake Chelekleka and max. ca. 10 Ind. at Lake Ziway.

Collared Pratincole – Rotflügel-Brachschwalbe – *Glareola pratincola*

Ca. 30 Ind. (30.11.) and ca. 50 Ind. (10.12.) respectively at Lake Ziway.

Grey-headed Gull – Graukopfmöwe – *Larus cirrocephalus*

10-15 (ad. and immat.) Ind. at Lake Ziway.

Common Gull-billed Tern – Lachseeschwalbe – *Gelochelidon nilotica*

Small numbers on Lake Koka and Lake Ziway and > 50 Ind. flying over Lake Langano.

Whiskered Tern – Weissbart-Seeschwalbe – *Chlidonias hybrida*

Small numbers seen, flying along the shoreline of Lake Ziway.

Black-winged Kite – Gleitaar – *Elanus caeruleus*

Hanspeter saw 1 Ind. each in the northwestern highlands and near Negele, another ad. Ind. we have well seen few km north of Yabelo.

African Harrier-hawk – Höhlenweihe – *Polyboroides typus*

A very brief observation (white-banded black tail seen) from the moving car: 1 Ind. along the road C80 some km south of Agere Maryam.

Bearded Vulture – Bartgeier – *Gypaetus barbatus*

1 ad. Ind. flying along the impressive cliffs of Debre Libanos.

Egyptian Vulture – Schmutzgeier – *Neophron percnopterus*

1 ad. observed at Debre Libanos and 1 ad. Ind. en route somewhere in the northwestern highlands. Further observations in Awash NP (1 ad. Ind.) and en route in the Rift Valley (total 4 Ind.).

White-headed Vulture – Wollkopfgeier – *Trigonoceps occipitalis*

Hanspeter saw 2 ad. en route between Negele and Yabelo.

Hooded Vulture – Kappengeier – *Necrosyrtes monachus*

The most numerous and widespread Vulture; nearly daily seen throughout the tour. Especially common along the Rift Valley in the vicinity of towns and villages.

African White-backed Vulture – Weissrückengeier – *Gyps africanus*

1 ad. Ind. at Lake Ziway (1.12.), 3 ad. Ind. 27 km south of Bore along the road D82 to Negele (6.12), ca.
 5 Ind. together with Hooded Vultures along the road C80 some km south of Agere Maryam (8.12.) and ca.
 5 Ind. soaring over the city of Kuyera (9.12.) in the Rift Valley.



Near Debre Birhan on the north-western highland plateau we could observe these majestic **Rüppell's Griffons** in very close distance.

Rüppell's Griffon – Sperbergeier – *Gyps rueppellii*

Many of the vultures of the genus *Gyps* we have observed could not be precisely identified. We have surely seen Rüppell's Vultures at Debre Libanos, a group of 12 ad., subad. and immat. Ind. on a carcass (donkey) few km southwest of Debre Birham and in the southeastern highlands twice 3 Ind. each along the road D82 (to Negele) near Bocco and along the road C80 (to Yabelo) in the vicinity of Agere Maryam respectively.

Eurasian Griffon – Gänsegeier – *Gyps fulvus*

As mentioned above, we couldn't identify all vultures. We have presumably seen Griffon Vultures in the northwestern and southeastern highlands (including probably 2 Ind. on the Sanetti plateau in Bale Mountains NP) and along the Awash Valley. No observation in the south.

Lappet-faced Vulture – Ohrengeier – *Torgos tracheliotus*

We have seen 1 immat. Ind. along the road to Lemi in the northwestern highlands and 1 ad. on the Sanetti plateau in Bale Mountains NP.

Lesser Spotted Eagle – Schreiadler – *Aquila pomarina*

Scattered sightings of single birds in the northwestern highlands, in Awash NP, near Goba in the southeastern highlands and in the south near Sekorajide along the road D82 to Negele and in Yabelo area.

Tawny Eagle – Savannenadler – *Aquila rapax*

A commonly encountered and widespread species throughout the tour. We have seen almost every day 1-5 (ad. and immat.) Ind.

Golden Eagle – Steinadler – *Aquila chrysaetos*

Presumably 1 Ind. near Lemi and surely 1 ad. Ind. along the road A2 between Debre Birham and Addis Abeba in the northwestern highlands. A further ad. Ind. was seen on the Sanetti plateau in Bale Mountains NP.

Verreaux's Eagle – Kaffernadler – *Aquila verreauxii*

Beautiful observations of this impressive eagle species along the cliffs of Debre Libanos (twice 1 ad. Ind.) and near view point Gemassa Gedal south of Debre Sina in Ankober mountain range (pair).

Booted Eagle – Zwergadler – *Hieraaetus pennatus*

1 Ind. en route between Bishoftu and Awash NP

Dark Chanting-goshawk – Graubürzel-Singhabicht – *Melierax metabates*

1 ad. and 1 immat. Ind. in Awash NP and ca. 5 Ind. en route in the Rift Valley.

Eastern Chanting-goshawk – Weissbürzel-Singhabicht – *Melierax poliopterus*

1 ad. and 1 immat. south of Yabelo.

Gabar Goshawk – Gabarhabicht – *Micronisus gabar*

1 subad. Ind. well seen in a tree in Awash NP.



Dark Chanting-goshawks are usually seen singly or in pairs, often perched for long periods on a prominent perch.

Western Marsh-Harrier – Rohrweihe – *Circus aeruginosus*

Up to 5 Ind. of this palaeartic migrant were observed at Lake Chelekleka and Lake Ziway respectively.

Pallid Marsh-Harrier – Steppenweihe – *Circus macrourus* or**Montagu's Harrier – Wiesenweihe – *Circus pygargus***

Unfortunately no doubtful identification of these palaeartic migrants. We have seen single female-like Ind. near Lemmi and between Debre Birhan and Addis Abeba in the northwestern highlands and en route twice in the southeastern highlands.

African Goshawk – Afrikahabicht – *Accipiter tachiro*

1 Ind. seen soaring over the forests of Wendo Genet.

Shikra – Schikra – *Accipiter badius*

1 Ind. was seen flying over the Awash falls lodge and the following day 1 ad. sitting near the Awash falls.

Little Sparrowhawk – Zwergsperber – *Accipiter minullus*

2 Ind. seen in Awash NP near the Awash falls lodge.

Black Sparrowhawk – Mohrenhabicht – *Accipiter melanoleucus*

1 ad. attacking a waderbird and later 1 immat. at Lake Chelekleka near Bishoftu.

African Fish-eagle – Schreiseeadler – *Haliaeetus vocifer*

Widespread sightings of ad. and immat. Ind. at Awash river in Awash NP and at several Rift Valley lakes (Lake Awassa, Lake Ziway, Lake Langano).



The majestic **African Fish-eagle**, a surprisingly often seen raptor species of our journey.

Black Kite – Schwarzmilan – *Milvus migrans*

We didn't check the bill-colour of every Kite we saw. Clearly identified Black Kites were seen in the north-western highlands, including > 10 Ind. few km east of Debre Birhan.

Yellow-billed Kite – Schmarotzermilan – *Milvus aegyptius* – only IOC-List

Common to very abundant throughout the tour especially along the towns and villages in the Rift Valley.

Augur Buzzard – Augurbussard – *Buteo augur*

We have seen both morphs of this distinctive raptor in the northwestern and in the southeastern highlands (including 4 Ind. on Sanetti plateau in Bale Mountains NP) and 1 Ind. of the pale morph at Wendo Genet.

Eurasian Buzzard – Mäusebussard – *Buteo buteo*

Probably 1 Ind. seen near Goba and another 1 Ind. with rufous underwing-coverts on the Gaysay grasslands in Bale Mountains NP.

African Wood-owl – Afrikanischer Waldkauz – *Strix woodfordii*

2 Ind. heard and seen within the park of Wabe Shebelle hotel in Wendo Genet.



The **Speckled Mousebird** has like all members of this unique african bird family soft, hairlike body feathers.

Speckled Mousebird – Braunflügel-Mausvogel – *Colius striatus*

Widespread sightings of small numbers at scattered locations: Debre Libanos, Bishoftu area, Awassa, Liben lodge (Lake Ziway), east of Negele and at Sabana beach resort (Lake Langano).

Blue-naped Mousebird – Blaunacken-Mausvogel – *Urocolius macrourus*

Only twice seen in Awash NP (ca. 10 Ind. on 29.11. and ca. 5 Ind. on 30.11.).

Another highlight of our trip was the observation of a family of the **Northern Ground-hornbill** in close distance (male on picture).



The female of the **African Grey Hornbill** has a reddish bill tip in contrast to the male, who has a completely black bill.



Only once seen in Awash NP, the **Eastern Yellow-billed Hornbill**.



Narina Trogon – Narinatrogon – *Apaloderma narina*

1 male in montane secondary forest above Wendo Genet; beautiful observation!

Northern Ground-hornbill – Sudanhornrabe – *Bucorvus abyssinicus*

1 pair with 1 juvenile near Sekorajide along the road D82 to Negele and 1 pair in cultivated land few km north of Yabelo.

African Grey Hornbill – Grautoko – *Lophoceros nasutus*

Excellent observation of 3 Ind. (2 males and 1 female) very close at Awash NP, further observations in Negele area.

Hemprich's Hornbill – Hemprichtoko – *Lophoceros hemprichii*

Several observations of single birds or small numbers in the northwestern highlands (Debre Libanos, Lemi, Jemma Valley) and at Sabana beach resort (including 1 Ind. with a dead sunbird in the bill).

Eastern Yellow-billed Hornbill – Östlicher Gelbschnabeltoko – *Tockus flavirostris*

Two times 1 Ind. seen in Awash NP and a further observation of 1 Ind. north of Yabelo by Hanspeter.

Von der Decken's Hornbill – Von-der-Decken-Toko – *Tockus deckeni*

Single birds or pairs were observed in Negele area and south and north of Yabelo.

Red-billed Hornbill – Rotschnabeltoko – *Tockus erythrorhynchus*

In total 6 Ind. seen within Awash NP. Several sightings in the south along the road D82 to Negele, 1 Ind. in dry acacia savanna east of Negele and up to 10 Ind. near Yabelo.

Silvery-cheeked Hornbill – Silberwangen-Hornvogel – *Bycanistes brevis*

Firstly, we observed 5 Ind. of this forest dwelling species on a big fig tree near Lake View Hotel in Awassa. The following morning, we saw from there ca. 50 Ind. after leaving their night-roosting place. Further single Ind. or pairs we have seen in montane forest patches along the road from Negele to Yabelo and in the forests around Wendo Genet.



A male **Silvery-cheeked Hornbill** on a dead tree in secondary forest above Wendo Genet at dawn.

Common Hoopoe – Wiedehopf – *Upupa epops*

Widespread sightings of single Ind. of this Palearctic migrant in Awash NP, along the Rift Valley lakes and in the south (Negele, Yabelo).

Black-billed Woodhoopoe – Schwarzschnabel-Baumhopf – *Phoeniculus somaliensis*

Small groups of this gregarious species were seen in Awash NP, north of Negele and north of Yabelo.

Abyssinian Scimitarbill – Goldschnabelhopf – *Rhinopomastus minor*

Two times a small group of 3-4 Ind. in Awash NP.

Northern Carmine Bee-eater – Karminspint – *Merops nubicus*

Beautiful observation of 3 Ind. around Liben lodge at Lake Ziway shoreline. A further Ind. was seen en route in the Rift Valley.



The **Northern Carmine Bee-eater**, a spectacularly big, long-tailed and beautifully coloured species.



The **Blue-breasted or Ethiopian Bee-eater** (above) and the **Little Bee-eater** (ssp. cyanostictus below) are not easy to distinguish. Apart of the size, the Blue-breasted has a white wedge on the cheeks, separating the yellow throat from the black eye-mask and a broader deep blue forehead.

Blue-cheeked Bee-eater – Blauwangenspint – *Merops persicus*

3 Ind. of this palaeartic migrant roosting on a dead tree in Awash NP.

Ethiopian Bee-eater – Hochlandspint – *Merops lafresnayi* – near endemic to the Horn of Africa – HBW-List**Blue-breasted Bee-eater – Blaubrustspint – *Merops variegatus ssp. lafresnayi* – IOC-List**

Several sightings of this near-endemic bird in the Jemma Valley, near Bishoftu, along the Awash valley, in montane forest 14 km NW Kibre Mengist and at Wendo Genet.

Little Bee-eater – Zwergspint – *Merops pusillus*

We have seen up to 5 Ind. of this species around Liben lodge at Lake Ziway and some Ind. probably at Lake Langano.

Purple Roller – Strichelracke – *Coracias naevius*

Only one single observation of 1 Ind. en route in Awash Valley between Adama and Awash NP.

Lilac-breasted Roller – Gabelracke – *Coracias caudatus*

Several sightings of single Ind. in acacia woodland in Awash NP and in the south (Negele and Yabelo area).

Abyssinian Roller – Senegalracke – *Coracias abyssinicus*

In total 5 Ind. seen within Awash NP.

African Pygmy-kingfisher – Natalzwerfischer – *Ispidina picta*

Our local guide found 1 Ind. of this forest-dwelling species at Wendo Genet.

Malachite Kingfisher – Haubenzwerfischer – *Corythornis cristatus*

A single Ind. well seen at Lake Hora near Bishoftu and 1-2 Ind. very close in front of Liben lodge at Lake Ziway.



What a beautiful light!
Lilac-breasted Roller sitting on a big Euphorbia-tree near Negele, about one hour before sunset.



Apart of the much longer tail the **Abyssinian Roller** resembles the European Roller.

Half-collared Kingfisher – Kobalteisvogel – *Alcedo semitorquata*

Very beautiful observation of 2 Ind. along a small mountain stream at Wendo Genet at dusk.

Pied Kingfisher – Graufischer – *Ceryle rudis*

We saw our first pair of Pied Kingfishers along a small river in the northwestern highlands between Make-turi and Lemi. Up to 6 Ind. together we have seen at Liben lodge (Lake Ziway), 2 Ind. near Lake View hotel in Awassa and further 2 Ind. at Lake Langano.

Grey-headed Kingfisher – Graukopfliest – *Halcyon leucocephala*

1 Ind. each in Awash NP and in the gardens around Liben lodge (Lake Ziway).

Striped Kingfisher – Streifenliest – *Halcyon chelicuti*

We have seen single birds of this inhabitant of the acacia savanna in Awash NP (chasing a Masked Shrike), north of Negele and at Sabana beach resort (Lake Langano).

Woodland Kingfisher – Senegalliest – *Halcyon senegalensis*

We have seen three times 1 Ind. at Awash river near Awash falls lodge, 1 Ind. at Liben lodge (Lake Ziway) and another single Ind. within the garden of Wabe Shebelle hotel area in Awassa.

The sex of the **Pied Kingfisher** can be determined: Adult females has a single broken breast-band (left), males has two complete breast bands (right).



The **Woodland Kingfisher** is a tree kingfisher that is widely distributed in sub-saharan Africa. The large bill has a red upper mandible and black lower mandible.

**Lesser Honeyguide – Nasenstreif-Honiganzeiger – *Indicator minor***

1 Ind. high up in a tree (not well seen) in montane forest at Wendo Genet.

Eurasian Wryneck – Wendehals – *Jynx torquilla*

Only heard: 1 Ind. each at Lake Bishoftu and Lake Hora.

Nubian Woodpecker – Nubierspecht – *Campethera nubica*

1 female in Awash NP, 1 male in the garden of Liben lodge (Lake Ziway).

Abyssinian Woodpecker – Wacholderspecht – *Dendropicos abyssinicus* – endemic to the Horn of Africa

1 female in montane forest at Wendo Genet.



A **Nubian Woodpecker** male feeding on the ground in the garden of Liben lodge near Lake Ziway.

Cardinal Woodpecker – Kardinalspecht – *Dendropicos fuscescens*

Two times 1 male and 1 female seen in Awash NP and 1 female at Sabana beach resort (Lake Langano).

Grey-headed Woodpecker – Graukopfspecht – *Dendropicos spodocephalus*

1 pair at nesting hole in the park of Wabe Shebelle hotel in Awassa, 1 Ind. at Wendo Genet and another Ind. at Sabana beach resort (Lake Langano).



The Ground-dwelling barbets of the genus *Trachyphonus* have a brightly patterned black, yellow, red and white plumage. Here, a **Yellow-breasted Barbet**, seen in the Awash Valley.

Red-and-yellow Barbet – Flammenkopf-Bartvogel – *Trachyphonus erythrocephalus*

1 Ind. sitting on a termite mound along the road D82 to Negele, ca. 5 km north of Bitata.

Yellow-breasted Barbet – Perlenbartvogel – *Trachyphonus margaritatus*

2 Ind. along the main road A1, 28 km W of Metehara (Awash Valley) and 4 Ind. observed while singing duets in Awash NP.

D'Arnaud's Barbet – Ohrfleck-Bartvogel – *Trachyphonus darnaudii*

A small noisy group of 5 Ind. south of Yabelo and another 2-3 Ind. north of Yabelo.

Yellow-fronted Tinkerbird – Gelbstirn-Bartvogel – *Pogoniulus chrysoconus*

1 calling Ind. each in montane forest 14 km NW Kibre Mengist and at Wendo Genet.

Red-fronted Barbet – Diadembartvogel – *Tricholaema diademata*

1 calling Ind. well seen in acacia savanna ca. 45 km south of Yabelo.

Banded Barbet – Wellenbartvogel – *Lybius undatus* – endemic to the Horn of Africa

1 Ind. in open forest near Debre Libanos and 1 Ind. very close at Sabana beach resort (Lake Langano).



At a bird bath at Sabana beach resort near Lake Langano we were able to photograph and observe various species of birds from a short distance like the **Banded Barbet** (above) and the **Black-billed Barbet** (below).

Black-billed Barbet – Purpurmasken-Bartvogel – *Lybius guifsobalito*

Short observation of 1 Ind. at Lake Bishoftu and great views of 2 Ind. at Sabana beach resort (Lake Langano).

African Pygmy-falcon – Halsband-Zwergfalke – *Polihierax semitorquatus*

1 ad. Ind. sitting on a high acacia tree south of Yabelo.

Common Kestrel – Turmfalke – *Falco tinnunculus*

Widespread sightings of single birds in the northwestern highlands, in Awash NP, on the Sanetti plateau in Bale Mountains NP and at Sabana beach resort (Lake Langano). We weren't looking for the also possible Lesser Kestrel *Falco naumanni* (4 Ind. east of Negele were possibly this species).

Grey Kestrel – Graufalke – *Falco ardosiaceus*

Several observations in the south: 2 Ind. east of Negele, 1 Ind. in the north of and 2 Ind. south of Yabelo respectively.



Like many other falcons, the **African Pygmy-falcon** pounces on prey from a perch. The diet consists mainly of small reptiles and large insects.

Lanner Falcon – Lanner – *Falco biarmicus*

2 Ind. in cultivates land along the road A3, 13 km south of Maketuri in the northwestern highlands; a further single ad. Ind. we have seen in Awash NP.

Peregrine Falcon – Wanderfalke – *Falco peregrinus*

Hanspeter saw 1 Ind. in Awash NP.

Yellow-fronted Parrot – Schoapapagei – *Poicephalus flavifrons* – endemic to Ethiopia

At first only heard and later at least 5 Ind. (ad. and immat.) seen while eating fruits high up in a tree in montane secondary forest at Wendo Genet.

Red-bellied Parrot – Rotbauch-Mohrenkopf – *Poicephalus rufiventris*

1 Ind. seen in riverine forest along Awash river in Awash NP and further 2 Ind. were seen in Yabelo area.

Black-winged Lovebird – Tarantapapagei – *Agapornis taranta* – endemic to the Horn of Africa

1 Ind. drinking water on a waterfall in the Jemma Valley, 1 Ind. at Lake Bishoftu and further 3-4 Ind. at Chelekleka Lake. A further single Ind. was seen in a big juniper tree at Wendo Genet.

Ethiopian Black-headed Oriole – Mönchspirol – *Oriolus monacha* – endemic to the Horn of Africa

2 Ind. heard and seen in flight at forest edge near the monastery in Debre Libanos and good views (twice 2 Ind.) at Wendo Genet in montane forest. 2 Ind. of Orioles seen in montane forest along the road D82 5 km E Sciacchiso at 1910 m were most likely also this species.



An **Ethiopian Black-headed Oriole**, looking for food in upside down position.

The call, the darker crown and the smaller breast-band of this female **Western Black-headed Batis** from Lake Langano distinguishes it from the similar looking Grey-headed Batis.



Definitely more heard than seen: the beautiful **Ethiopian Boubou** with its pinkish breast and belly.



Eastern Black-headed Oriole – Maskenpirol – *Oriolus larvatus*

5 Ind. well seen and definitely identified in a eucalyptus forest-patch east of Negele and further 2 Ind. in dry acacia woodland north of Negele.

White-crested Helmetshrike – Weisskopf-Brillenvanga – *Prionops plumatus*

A small group of at least 6 Ind. near Awash falls lodge in Awash NP.

Grey-headed Batis – Heuglinschnäpper – *Batis orientalis*

2 surely identified Ind. of this species seen and heard in Awash NP and 1-2 Ind. seen at Wendo Genet; see also Western Black-headed Batis.

Western Black-headed Batis – Kongoschnäpper – *Batis erlangeri*

1 surely identified pair at Sabana beach resort (Lake Langano). Further observed Ind. of *Batis* at Liben lodge (Lake Ziway) and in the vicinity of Negele could not clearly identified.

Brown-throated Wattle-eye – Lappenschnäpper – *Platysteira cyanea*

1 male in montane secondary forest at Wendo Genet.

Grey-headed Bush-shrike – Graukopfwürger – *Malaconotus blanchoti*

1 Ind. of this beautiful coloured bird seen in acacia savanna south of Yabelo.

Northern Puffback – Gambia-Schneeballwürger – *Dryoscopus gambensis*

Two times 1 Ind. seen at forest edge at Wendo Genet.

Black-crowned Tchagra – Senegaltschagra – *Tchagra senegalus*

2 Ind. at Debre Libanos (only heard) and two times 1 Ind. at Lake Langano (once seen while killing and eating a small gecko).

Brubru – Brubruwürger – *Nilaus afer*

1 pair seen and heard (<https://www.xeno-canto.org/619384>) in Awash NP and several observations in Yabelo area.

Slate-colored Boubou – Trauerwürger – *Laniarius funebris*

In total 3 Ind. seen and heard (<https://www.xeno-canto.org/619383>) in Awash NP and 1 Ind. south of Yabelo.

Tropical Boubou – Äthiopienwürger – *Laniarius aethiopicus ssp. aethiopicus* – HBW-List**Ethiopian Boubou – Äthiopienwürger – *Laniarius aethiopicus* – near endemic to the Horn of Africa – IOC-List**

Several observations (seen or heard) of single birds at Lake Chelekleka and Lake Hora near Bishoftu, Awash NP, Liben lodge (Lake Ziway), Awassa, Wendo Genet and Sabana beach resort (Lake Langanu).

Rosy-patched Shrike – Rosenwürger – *Rhodophoneus cruentus*

Several sightings of pairs or single birds in Awash NP (duet song heard), near Negele and in Yabelo area.

Fork-tailed Drongo – Trauerdrongo – *Dicrurus adsimilis*

Small numbers seen in acacia savanna in Awash NP and in the south (Negele, Yabelo).

African Paradise-flycatcher – Graubrust-Paradiesschnäpper – *Terpsiphone viridis*

Widespread sightings (few males and many females seen) at Debre Libanos, around Bishoftu, Wendo Genet, Sabana beach resort (Lake Langanu) and at Liben lodge (Lake Ziway).

Northern White-crowned Shrike – Rüppellwürger – *Eurocephalus ruppelli*

Groups of up to 12 Ind. of this gregarious species were seen in Awash NP and Yabelo area.

Isabelline Shrike – Isabellwürger – *Lanius isabellinus*

1 Ind. (female or immat.) sitting in a bush along the road east of Negele; see <https://www.birdforum.net/threads/turkestan-or-isabelline-shrike-from-ethiopia.404443/>

Grey-backed Fiscal – Graumantelwürger – *Lanius excubitoroides*

2 Ind. in cultivated land north of Yabelo.

Taita Fiscal – Taitawürger – *Lanius dorsalis*

1 Ind. in acacia woodland ca. 15 km south of Yabelo.

Somali Fiscal – Somaliwürger – *Lanius somalicus* – near endemic to the Horn of Africa

In total 6 Ind. within Awash NP and 1 pair in dry acacia woodland east of Negele.



A *Grey-backed Fiscal* in a flowering acacia tree near Yabelo.

Common Fiscal – Fiskalwürger – *Lanius collaris ssp. humeralis* – HBW-List**Northern Fiscal – Stanleywürger – *Lanius humeralis* – IOC-List**

Widespread sightings of single Ind. in the northwestern and southeastern highlands and one observation in the Rift Valley; not seen in the south.

Woodchat Shrike – Rotkopfwürger – *Lanius senator*

1 ad. and 1 immat. Ind. seen in Awash NP.

Masked Shrike – Maskenwürger – *Lanius nubicus*

1 ad. and 2 immat. Ind. (once 1 Ind. pursued by a Striped Kingfisher) seen in Awash NP.

Red-billed Chough – Alpenkrähe – *Pyrrhocorax pyrrhocorax*

Two pairs (1.12.) and one pair (3.12.) along the road B90 over the mountain pass (3600 m) between Adaba and Dinsho.

Stresemann's Bushcrow – Akazienhäher – *Zavattariornis stresemanni* – endemic to Ethiopia

Wonderful views of this striking endemic (see title page). We encountered two groups (6 and 9 Ind. respectively) of this gregarious bird ca. 45 km south of Yabelo.

Cape Crow – Kapkrähe – *Corvus capensis*

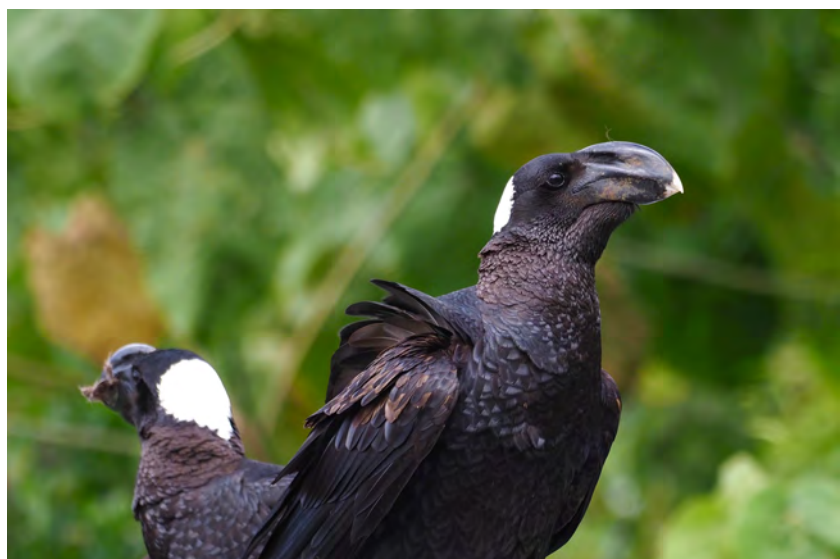
Widespread observations (mostly pairs) in cultivated land in the northwestern and southeastern highlands. Absent in the Rift Valley and in the south (Negele, Yabelo).



A pair of **Cape Crows** sitting on the edge of the Lemi Cliffs.

Thick-billed Raven – Erzrabe – *Corvus crassirostris* – endemic to the Horn of Africa

We have seen the first pair of this flagship species near Gudo Beret along the road A2 from Debre Birhan to Debre Sina in Ankober mountain range. Further observations we made mainly in the southeastern highlands (along the road B90 between Adaba and Dinsho, in Goba, Dodola, Kibre Mengist and along the road C80/A8 between Agere Maryam and Awassa). The last Ind. we saw along the road A1 some km south of Addis Ababa.



Thick-billed Ravens are unique birds with a very large bill that is laterally compressed and deeply curved in profile giving the bird a very distinctive appearance.

Somali Crow – Somalirabe – *Corvus edithae*

4 Ind. feeding on a roadkill and later sitting in a tree south of Yabelo.

Pied Crow – Schildrabe – *Corvus albus*

We have seen our first Pied Crows at Bole Airport in Addis Abeba. The following days we encountered this common species many times in the northwestern (up to 50 Ind. on 25.11.) and southeastern highlands, as well as in the Rift Valley. No sightings in the south around Negele or Yabelo.

Fan-tailed Raven – Borstenrabe – *Corvus rhipidurus*

Many sightings in the northwestern highlands (Debre Libanos, Jemmu Valley, Gemassa Gedal in Ankober mountain range), in the Rift Valley (Awash NP and Meki near Lake Ziway) and in the southeastern highlands, including the Sanetti plateau in Bale Mountains NP. Only a single observation in the south: 2 Ind. near Agere Maryam.

White-winged Black Tit – Ruppellmeise – *Melaniparus leucomelas*

1 Ind. within the garden of Liben lodge (Lake Ziway).

Mouse-coloured Penduline-tit – Graubeutelmeise – *Anthoscopus musculus*

2 Ind. in dry acacia woodland in Awash NP.

Foxy Lark – Fuchslerche – *Calendulauda alopex*

1 singing male in acacia woodland south of Yabelo.

Liben Lark – Somalispornlerche – *Heteromiraфра archeri* – [endemic to Ethiopia](#)

1 singing male (heard and seen during flight display song) of this extremely rare and critically endangered species on the Liben plains east of Negele.

Blanford's Lark – Blanfordlerche – *Calandrella blanfordi ssp. erlangeri*

Only seen in cultivated land in the northwestern highlands: 2 Ind. along the road A3, 13 km south of Maketuri and ca. 4 Ind. along the unpaved road between Lemi and Debre Birhan.

Thekla Lark – Theklalerche – *Galerida theklae*

Widespread sightings in cultivated land in the northwestern and southeastern highlands, including the Sanetti plateau in Bale Mountains NP. Absent in the Rift Valley and in the south.

Red-faced Crombec – Rotzügelsylvietta – *Sylvietta whytii*

Several observations of single Ind. or pairs (seen and heard) in Awash NP, north of Negele, at Liben lodge (Lake Ziway) and near Sabana beach resort (Lake Langano).



The Red-faced Crombec belongs to the family Macrosphenidae, endemic to Africa. With their very short tail they resemble a Nuthatch.

Yellow-bellied Eremomela – Gelbbaucheremomela – *Eremomela icteropygialis*

Only a single observation of 1 Ind. in dry acacia woodland 32 km east of Negele.

Yellow-breasted Apalis – Gelbb Brust-Feinsänger – *Apalis flavida*

Hanspeter has heard 1 Ind. in acacia woodland near Yabelo.

Buff-bellied Warbler – Akaziensänger – *Phyllolais pulchella*

1 Ind. each in Awash NP and within the garden areas of Liben lodge (Lake Ziway) and Sabana beach resort (Lake Langano).

Grey Wren-warbler – Somalibindensänger – *Calamonastes simplex*

1 Ind. reacts to playback and then well seen in low bushes in Awash NP.

Grey-backed Camaroptera – Grünmantel-Bogenflügel – *Camaroptera brachyura* ssp. *abessinica* – HBW-List**Grey-backed Camaroptera – Grünmantel-Bogenflügel – *Camaroptera brevicaudata* – IOC List**

Hanspeter saw already 1 Ind. at Lake Hora near Bishoftu. Further observations of single Ind. at Wendo Genet and at Sabana beach resort (Lake Langano).

Rattling Cisticola – Rotscheitel-Cistensänger – *Cisticola chiniana*

Several observations of single Ind. at Liben lodge near Lake Ziway (1 singing male well seen) and in Negele (<https://www.xeno-canto.org/610118>) and Yabelo area respectively.

Boran Cisticola – Borancistensänger – *Cisticola bodessa*

1 singing male and another Ind. well seen in dry acacia woodland north of Negele.

*The most challenging african bird group to identify are the Cisticolas. Fortunately, not only did we see this **Rattling Cisticola** sitting on the floor, but we also heard the song of this male few minutes earlier.*



*The **Ethiopian Cisticola** is a further endemic bird. We have seen this species in the north-western highlands and on the Sanetti plateau in Bale Mountains NP (picture).*

**Ashy Cisticola – Graucistensänger – *Cisticola cinereolus***

1 singing male in in dry acacia woodland, 29 km east of Negele.

Ethiopian Cisticola – Rüppellcistensänger – *Cisticola lugubris* – endemic to the Horn of Africa

1 male (seen and song heard) along a river 20 km west of Debre Birhan in the northwestern highlands and 1 singing male on the lower part of the Sanetti plateau in Bale Mountains NP.

Tawny-flanked Prinia – Rahmbrustprinie – *Prinia subflava*

2 Ind. in bushes near Lake Chelekleka near Bishoftu and in total 3 Ind. in the garden of Wabe Shebelle hotel in Goba.

Pale Prinia – Somaliprinie – *Prinia somalica*

3 Ind. crossing the road in acacia woodland, south of Yabelo.

Olivaceous Warbler – Blassspötter – *Iduna pallida*

1 singing male (only heard) at Awash NP. We saw another, but unidentified Warbler (*Hippolais* or *Iduna*) at Sabana beach resort (Lake Langanu).

Eurasian Reed-warbler – Teichrohrsänger – *Acrocephalus scirpaceus*

1 singing male (only heard) at Lake Hora near Bishoftu.

Cinnamon Bracken-warbler – Zimtbuschsänger – *Bradypterus cinnamomeus*

2 singing males heard and one short observation of 1 Ind. in dwarf shrubs near view point Gemassa Gedal south of Debre Sina in Ankober mountain range at 3250 m.

Black Saw-wing – Erzschnalbe – *Psalidoprocne pristoptera*

2 Ind. in the Jemma Valley, ca. 6 Ind. near Konkoma along the road D82 to Negele and > 30 Ind. high up over the forests of Wendo Genet.

Northern House Martin – Mehlschnalbe – *Delichon urbicum*

Michael saw 1 Ind. at Awash falls and probably another single Ind. near Awash bridge at Lake Koka.

Lesser Striped-Swallow – Maidschnalbe – *Cecropis abyssinica*

Hanspeter saw 1 Ind. at Awash falls. Further Ind. (2-3 flying and 2 Ind. sitting on a wire) were seen near Dubuluk south of Yabelo.

Red-rumped Swallow – Rötelschnalbe – *Cecropis daurica*

Small numbers seen in Awash NP (up to 20 Ind. on 29.11.) and at Lake Ziway.

Wire-tailed Swallow – Rotkappenschnalbe – *Hirundo smithii*

1 immat. Ind. (without elongated tail feathers) en route in the northwestern highlands and 1 ad. Ind. at Awash bridge near Lake Koka.

Barn Swallow – Rauchschnalbe – *Hirundo rustica*

Widespread observations of this palaeartic migrant throughout the tour (but nearly absent in the south).

We saw big flocks at Awash falls, at Lake Chelekleka near Bishoftu (> 200 Ind.) and at Lake Ziway (> 300 Ind.) and smaller flocks or single Ind. along the road through the Rift Valley.



The trivial name of the **Ethiopian Swallow** is misleading. This species occurs in a wide range from the Ivory Coast in the west to Somalia in the east.

Ethiopian Swallow – Fahlkehschwalbe – *Hirundo aethiopica*

Excellent observations of at least 1 Ind. at Liben lodge (Lake Ziway).

White-tailed Swallow – Weisschwanzschwalbe – *Hirundo megaensis* – endemic to Ethiopia

Ca. 5 Ind. of this sought-after species in open acacia savannah 47 km south of Yabelo.

Eurasian Crag Martin – Felsenschwalbe – *Ptyonoprogne rupestris*

2 Ind. flying along the cliffs near Lemi. 1 very pale Ind. seen near Lemi was probably a Pale Crag Martin *Ptyonoprogne obsoleta*.

Red-throated Rock Martin – Rostkehlschwalbe – *Ptyonoprogne rufigula* ssp. *fusciventris* – HBW-List**Rock Martin – Steinschwalbe – *Ptyonoprogne fuligula* ssp. *fusciventris* / *pusilla* – IOC-List**

Small numbers observed along the cliffs of Debre Libanos and in Awash Valley and well seen (5-6 Ind.) along the small cliffs within the area of Sabana beach resort (Lake Langano).

African Plain Martin – Braunkehl-Uferschwalbe – *Riparia paludicola*

Widespread sightings throughout the tour: Sululta plains, Awash NP, Lake Chelekaleka near Bishoftu (> 300 Ind.) and around Liben lodge (Lake Ziway) and Sabana beach resort (Lake Langano). Furthermore we found some burrows of a small breeding colony along a small path down to Lake Hora near Bishoftu.

Collared Sand Martin – Uferschwalbe – *Riparia riparia*

5 Ind. at Awash falls and > 10 Ind. together with Barn Swallows near Liben lodge at Lake Ziway.

Common Bulbul – Graubülbül – *Pycnonotus barbatus*

Widespread sightings of this common species throughout the tour. We have seen white-vented birds of the ssp. *schoanus* in the northwestern highlands, in Bishoftu area, in Awash NP and along the Rift Valley lakes. 2 Ind. with yellow undertail-coverts in the garden of Wabe Shebelle hotel in Goba belonged to ssp. *spurius* and birds with the characteristics of the ssp. *dodsoni* (Dodson's Bulbul; separate species according to IOC-List) were encountered east of Negele. Birds seen around Yabelo and at Wendo Genet were not identified to subspecies level.

Willow Warbler – Fitis – *Phylloscopus trochilus*

Singing males of this palaeartic winter visitor were heard at Lake Chelekaleka near Bishoftu and at Liben lodge (Lake Ziway).

Eurasian Chiffchaff – Zilpzalp – *Phylloscopus collybita*

Several Ind. of this palaeartic winter visitor were seen or heard (including song) at Debre Libanos, at Lake Hora near Bishoftu and in juniper forests in and around Goba in Bale Mountains and probably also 1 Ind. in Awassa.

Brown Woodland-warbler – Umlaufsänger – *Phylloscopus umbrovirens*

Small numbers seen in the southeastern highlands in juniper trees (Dodola, several sightings around Goba in Bale Mountains) and 1 Ind. seen in secondary forest at Wendo Genet.

Blackcap – Mönchsgrasmücke – *Sylvia atricapilla*

1 male (song heard at later seen) at Lake Bishoftu, 1 female in secondary forest at Wendo Genet and probably heard at Liben lodge (Lake Ziway) and north of Yabelo.

Banded Warbler (Banded Parisoma) – Bandgrasmücke – *Sylvia boehmi*

In total 3 Ind. well seen in acacia savanna, south of Yabelo.

Brown Warbler (Brown Parisoma) – Braungrasmücke – *Sylvia lugens*

2 Ind. in shrubs on Sanetti plateau in Bale Mountains NP and 1-2 Ind. in secondary forest at Wendo Genet.

Lesser Whitethroat – Klappergrasmücke – *Sylvia curruca*

1 Ind. in a small bush above the cliffs at Debre Libanos.

Abyssinian Catbird – Singtimalie – *Parophasma galinieri* – endemic to Ethiopia

We have observed this endemic bird in the southeastern highlands: 2 Ind. in juniper forest above Goba and 1 Ind. in degraded juniper forest (3100 m) along the road B90 24 km west of Adaba.

Ethiopian White-eye – Bergbrillenvogel – *Zosterops poliogastrus*

3-5 Ind. observed while eating berries in the garden of the Wabe Shebelle hotel in Goba and further 5 Ind. in secondary forest at Wendo Genet.



One of the sought-after species of every Ethiopia birding tour, the endemic **Abyssinian Catbird**; a typical species of montane juniper forests.



Rufous Chatterers are noisy and gregarious birds; they live in territorial groups and are co-operative breeders. The bird on the left above is an immature Ind. with a dark iris.

Rufous Chatterer – Heuglindrosselhäherling – *Argya rubiginosa*

Small groups of this gregarious species were seen at Lake Hora near Bishoftu, south of Yabelo and at Sabana beach resort (Lake Langano).

White-rumped Babbler – Weissbürzel-Schwatzhäherling – *Turdoides leucopygia* – near endemic to the Horn of Africa

Small groups of 4-5 Ind. were seen at Debre Libanos and in Wendo Genet. Hanspeter saw also at least 2 Ind. in montane forest 14 km northwest of Kibre Mengist.

African Spotted Creeper – Afrikastammsteiger – *Salpornis salvadori*

Excellent observation of 1 Ind. in the park of Wabe Shebelle hotel in Awassa.

Red-billed Oxpecker – Rotschnabel-Madenhacker – *Buphagus erythrorhynchus*

We encountered ca. 20 Ind. on a cow on the Sululta plains, 2 Ind. in Awash NP and ca. 5 Ind. on a donkey along the road D82 4 km north of Bocco. Further birds (two times 3 Ind.) we have seen in dry acacia woodland around Negele.

Wattled Starling – Lappenstar – *Creatophora cinerea*

Few sightings but all in non-breeding plumage: 4 Ind. at Lake View hotel in Awassa, 6 Ind. together with Greater Blue-eared Starlings en route along the road south to Negele and a flock of ca. 40 Ind. in a fig tree at Awash bridge near Lake Koka.



Another highlight was the observation of the **African Spotted Creeper** a relative of our Nut-hatch and of the Wallcreeper.

Red-winged Starling – Rotschwingenstar – *Onychognathus morio*

2 Ind. well seen at Yabelo motel at dusk. Big flocks of ca. 50 Ind. and the following day of ca. 30 Ind. flying over the forests of Wendo Genet belonged most likely to this species.

White-billed Starling – Weisschnabelstar – *Onychognathus albirostris* – endemic to the Horn of Africa

3 Ind. along the cliffs of Debre Libanos near the Portugese bridge and in total ca. 10 Ind. at Jemma Valley.

Shelley's Starling – Shelleyglanzstar – *Lamprotornis shelleyi*

Several observations of small flocks (mixed with other starling species) north and south of Yabelo.

Rüppell's Starling – Schweifglanzstar – *Lamprotornis purpuroptera*

Small numbers seen at Bishoftu, in Awash NP and along the Rift Valley lakes.

Golden-breasted Starling – Königsglanzstar – *Lamprotornis regius*

A big flock of ca. 20 Ind. of this beautifully coloured starling well seen north of Yabelo and a single Ind. the following day south of Yabelo.

Superb Starling – Dreifarben-Glanzstar – *Lamprotornis superbus*

Michael saw the first Ind. at Bole Airport in Addis Abeba. Further few Ind. were seen at Awash NP and along the Rift Valley lakes. In the south (Negele, Yabelo), the Superb Starling was the most numerous Starling.

White-crowned Starling – Weiss Scheitel-Glanzstar – *Lamprotornis albigapillus*

3 Ind. seen near human dwellings east of Negele and in total ca. 10 Ind. south of Yabelo.



The diet of The **Red-billed Oxpeckers** consists primarily of ectoparasites of large mammals (both wild and domesticated) such as ticks, mites, lice and larvae of flies.

Greater Blue-eared Starling – Grünschwanz-Glanzstar – *Lamprotornis chalybaeus*

Widespread sightings of this common species in the northwestern highlands, along the Rift Valley and in the south.

Abyssinian Ground-thrush – Orangedrossel – *Geokichla piaggiae*

After searching this species many times before we heard 1 singing male during a short stop in montane forest (2010 m) 14 km northwest of Kibre Mengist. Heard and a short but excellent observation of 1 Ind. at Wendo Genet.



The **Rüppell's Starling** is a large glossy starling with a long graduated tail. The plumage shows an extraordinary metallic sheen.



The **Superb Starling** shows metallic greens and blues on its chest, back and wings and duller black on its head. The chestnut belly is divided from the dark chest by a stripe of white.

Ethiopian Thrush – Kosobaumdrossel – *Psophocichla simensis* – endemic to the Horn of Africa – HBW-List**Groundscraper Thrush – Akaziendrossel – *Psophocichla litsitsirupa ssp. simensis* – IOC-List**

Numerous observations in cultivated land in the northwestern highlands, 1 Ind. we have seen in the lower parts of Sanetti plateau in Bale Mountains NP and some birds en route between Goba and Dondolla in the southeastern highlands.

Abyssinian Thrush – Abessiniendrossel – *Turdus abyssinicus*

Scattered sightings throughout the tour in higher altitudes: Northwestern highlands, Lake Hora, Goba, in montane forest en route 14 km W of Kibre Mengist in the southeastern highlands and at Wendo Genet.

Bare-eyed Thrush – Brillendrossel – *Turdus tephronotus*

1 singing male well seen and heard south of Yabelo.

African Thrush – Afrikadrossel – *Turdus pelios*

Few sightings along the Rift Valley lakes in more lower altitudes: 4 Ind. at Liben lodge (Lake Ziway), 1 Ind. near Lake View hotel in Awassa and 1 Ind. at Sabana beach resort (Lake Langano).



Fairly long legs, a short tail and an erect posture is typical for the **Groundscraper Thrush**, occurring in almost treeless habitats.

White-browed Scrub-robin – Weissbrauen-Heckensänger – *Cercotrichas leucophrys*

2 singing males seen and heard in acacia woodland in Awash NP and probably further 2 Ind. south of Yabelo.

African Dusky Flycatcher – Dunkelschnäpper – *Muscicapa adusta*

Widespread sightings in small numbers (daily maximum 6 Ind.): Lake Chelekleka, Lake Hora, Awassa, Goba, montane forest 14 km northwest of Kibre Mengist in the southeastern highlands, Wendo Genet and Sabana beach resort (Lake Langano).

African Grey Flycatcher – Strichelkopfschnäpper – *Bradornis microrhynchus*

Twice 1 Ind. in open acacia woodland in Yabelo area.

Pale Flycatcher – Fahlschnäpper – *Bradornis pallidus*

Hanspeter saw 1 Ind. in Awash NP.

Abyssinian Slaty-flycatcher – Braundrongoschnäpper – *Melaenornis chocolatinus* – endemic to the Horn of Africa

We have observed single birds of this woodland and forest-edge inhabitant at Debre Libanos, in montane forest 14 km northwest of Kibre Mengist and at Wendo Genet.

Northern Black-flycatcher – Senegaldrongoschnäpper – *Melaenornis edolioides*

Single birds were seen in the garden of Liben lodge (Lake Ziway), near Lake View hotel in Awassa, in an eucalyptus forest east of Negele, at Wendo Genet and up to 4 Ind. within the gardens of Sabana beach resort (Lake Langano).



The **African Dusky Flycatcher** is not a shy bird. We encountered them many times in close distance.



The adult **Northern Black-flycatcher** is totally dull slate-black with dark brown eyes.

Rüppell's Robin-chat – Braunrückenrötel – *Cossypha semirufa*

Small numbers of this forest-dwelling species were encountered at Debre Libanos, at Dreamland hotel in Bishoftu (1 singing male at dusk), at Lake Hora near Bishoftu, within the garden of Wabe Shebelle hotel in Awassa town and at Wendo Genet.

Spotted Palm-thrush – Tropfenrötel – *Cichladusa guttata*

Beautiful observation of a group of 3 Ind. (song display with flicking of wings and spreading of tail seen) south of Yabelo.

Common Nightingale – Nachtigall – *Luscinia megarhynchos*

Probably heard (calls) in Awash NP and 1 singing male in the garden of Liben lodge (Lake Ziway).

Common Redstart – Gartenrotschwanz – *Phoenicurus phoenicurus*

Probably 1 female seen in Awash NP and Michael saw 1 male (n nominate ssp. *phoenicurus*) at Sabana beach resort (Lake Langano).

Little Rock-thrush – Schluchtenrötel – *Monticola rufocinereus*

Single Ind. seen at Debre Libanos, in the Jemma Valley and at Sabana beach resort (Lake Langano).



The **Little Rock Thrush** is a smaller relative of the Common Rock Thrush *Monticola saxatilis*, a passage migrant and winter visitor in Ethiopia, which we didn't see.

White-winged Cliff-chat – Spiegelschmätzer – *Monticola semirufus* – endemic to the Horn of Africa

2 Ind. near Portugese bridge at Debre Libanos and 1 male and 1 female/immature Ind. en route between Lemi and Debre Birhan in the northwestern highlands.

Common Stonechat – Schwarzkehlchen – *Saxicola torquatus ssp. torquatus* – HBW-List

African Stonechat – Afrikanisches Schwarzkehlchen – *Saxicola torquatus* – IOC-List

1 male en route along the road A3 to Debre Libanos in the northwestern highlands and another Ind. seen en route along the road B90 from Goba back to the Rift Valley in the southeastern highlands.

Moorland Chat – Almenschmätzer – *Pinarochroa sordida*

We have seen small numbers of this typical high-altitude species in the northwestern highlands, including > 10 Ind. near view point Gemassa Gedal south of Debre Sina in Ankober mountain range. Further observations of > 10 Ind. on the Sanetti plateau and 4 Ind. in the Gaysay grasslands in Bale Mountains NP.

Mocking Cliff-chat – Rotbauchschmätzer – *Thamnolaea cinnamomeiventris*

1 male in the Jemma Valley and 4 Ind. well seen and heard at Sabana beach resort (Lake Langano).

Rüppell's Chat – Einfarbschmätzer – *Myrmecocichla melaena* – **endemic to the Horn of Africa**

In total 4 Ind. near Portugese bridge at Debre Libanos and 1 Ind. in the Jemma Valley

Northern Wheatear – Steinschmätzer – *Oenanthe oenanthe*

We have seen many Wheatears throughout the tour and we had not enough time to identify all of them to species level. We observed small numbers of Northern Wheatears in the northwestern highlands and probably few Ind. in Awash NP and on the Sanetti plateau in Bale Mountains NP and surely 1 male north of Negele.

Rusty-breasted Wheatear – Braunbrust-Steinschm. – *Oenanthe frenata* – **endemic to the Horn of Africa** – HBW-List

Red-breasted Wheatear – Braunbrust-Steinschmätzer – *Oenanthe bottae ssp. frenata* – IOC-List

Several observations of single Ind. in the northwestern and southeastern highlands (daily maximum 5 Ind. on 1.12.).

*The **Rusty-breasted Wheatear** will be treated by some authors only as a subspecies of the Red-breasted Wheatear *Oenanthe bottae*.*



*Another rarity we have beautifully seen was the **Sombre Rock Chat**, a very little known bird, that was recently placed in the genus *Oenanthe*.*





The **Abyssinian Wheatear** will be treated by some authors only as a subspecies of the Mourning Wheatear *Oenanthe lugens*.

Isabelline Wheatear – Isabellsteinschmätzer – *Oenanthe isabellina*

Several Ind. seen in the northwestern highlands (including 1 Ind. at the cliffs near Lemi), probably 1 Ind. in Awash NP and a further Ind. on the Liben plains east of Negele.

Cyprus Wheatear – Zypernsteinschmätzer – *Oenanthe cypriaca*

Presumably 1 Ind. along the road to Lemi in the northwestern highlands.

Pied Wheatear – Nonnensteinschmätzer – *Oenanthe pleschanka*

The Pied Wheatear was the second most common palaeartic migrant of our tour. We saw many Ind. throughout the country in many different habitats.

Sombre Rockchat – Dunkelsteinschmätzer – *Oenanthe dubia* – endemic to the Horn of Africa

1 Ind. of this rare species above a lava-field along the main road A1, 28 km west of Metehara (Awash Valley).

Mourning Wheatear – Schwarzücken-Steinschmätzer – *Oenanthe lugens ssp. lugubris* – HBW-List

Abyssinian Wheatear – Abessiniensteinschmätzer – *Oenanthe lugubris* – endemic to the Horn of Africa – IOC-List

2 Ind. in the Jemma Valley and 1 ad. and 1 Immat. Ind. well seen near the cliffs of Sabana beach resort (Lake Langano).

Scarlet-chested Sunbird – Rotbrust-Glanzköpfchen – *Chalcomitra senegalensis*

1 male seen in breeding plumage at Liben lodge (Lake Ziway) and further Ind. within the garden of Wabe Shebelle hotel in Awassa town and at Wendo Genet.



Like all members of this bird family, also this male **Scarlet-chested Sunbird** has a long thin down-curved bill and a long tubular tongue, both adaptations to their nectar feeding.

Tacazze Sunbird – Tacazzenektarvogel – *Nectarinia tacazze*

2 females in a garden near the Sululta plains and further Ind. in non-breeding plumage around Debre Libanos. 1 male in non-breeding plumage of this largest sunbird species was finally spotted at Wendo Genet.

Beautiful Sunbird – Elfenektarvogel – *Cinnyris pulchellus*

Several and widespread observations of Ind. in non-breeding plumage near Lake Bishoftu (1 male and 1 female seen), in Awash NP and along the Rift Valley (Lake Ziway, Awassa, Lake Langano).

Variable Sunbird – Ziernektarvogel – *Cinnyris venustus*

Widespread sightings of this common species (mostly Ind. seen with yellow belly) in the northwestern and southeastern highlands and at Wendo Genet.

Mariqua Sunbird – Bindennekatorvogel – *Cinnyris mariquensis*

1-3 Ind. (including a male) within the gardens of Sabana beach resort (Lake Langano).

Shining Sunbird – Glanznektarvogel – *Cinnyris habessinicus*

1 male seen in dry acacia woodland north of Negele.

Red-billed Buffalo-weaver – Büffelweber – *Bubalornis niger*

We have seen ca. 10 Ind. at nests in open acacia woodland in Awash NP and 1 single Ind. en route along the road to Negele.

White-headed Buffalo-weaver – Starweber – *Dinemellia dinemelli*

Widespread sightings of this conspicuous weaver in Awash NP, around Negele, south of Yabelo and in the Rift Valley.

White-browed Sparrow-weaver – Weissbrauenweber – *Plocepasser mahali*

Excellent observations of this very tame species (mostly small groups in the vicinity of their nests seen) in Awash NP, in Awassa town, near Yabelo, at Liben lodge (Lake Ziway) and at Sabana beach resort (Lake Langano).



White-browed Sparrow-Weavers are very tame birds and can be observed within with few meters.

Grey-capped Social-weaver – Marmorweber – *Pseudonigritta arnaudi*

A flock of 50-100 Ind. feeding on the ground in open dry acacia woodland near Yabelo.

Black-capped Social-weaver – Schwarzkappenweber – *Pseudonigritta cabanisi*

1 Ind. within the flock of Grey-capped Social-weavers near Yabelo.

Red-billed Quelea – Blutschnabelweber – *Quelea quelea*

In total > 100 Ind. in Awash NP seen and a small flock of ca. 30 Ind. near Lake Ziway.

Yellow Bishop – Samtweber – *Euplectes capensis*

2-3 immat. Ind. near Sululta and 1 male in a grain field somewhere en route in the northwestern highlands.

Baglafaecht Weaver – Baglafaechtweber – *Ploceus baglafaecht*

We observed the first Ind. already at Bole Airport in Addis Abeba. Further single birds or small groups were seen in the northwestern (Debre Libanos, Jemma Valley, Bishoftu) and the southeastern highlands (Goba, Wendo Genet).

Little Weaver – Zwergweber – *Ploceus luteolus*

Probably already seen at Lake Chelekkeleka and surely at least 3 Ind. in non-breeding plumage at Sabana beach resort (Lake Langano).

Spectacled Weaver – Brillenweber – *Ploceus ocularis*

1 female each at Lake Chelekkeleka near Bishoftu and at Awassa and 1 male well seen at Wendo Genet.

Rüppell's Weaver – Gilbweber – *Ploceus galbula*

Presumably already seen in Bishoftu area, but surely at least 1 male in breeding plumage and 1 male in non-breeding plumage well seen at Sabana beach resort near Lake Langano; see also <https://www.birdforum.net/threads/unknown-weaver-from-ethiopia.405135/>

Vitelline Masked Weaver – Dotterweber – *Ploceus vitellinus*

2 Ind. at Lake Chelekkeleka near Bishoftu.

Red-billed Firefinch – Senegalamarant – *Lagonosticta senegala*

Widespread sightings of single Ind. or small groups at different locations (Debre Libanos, Jemma Valley, Lake Hora, Awash NP, Awassa).

Green-winged Pytilia – Buntastrild – *Pytilia melba*

2 Ind. (only female seen) in Awash NP and ca. 5 Ind. south of Yabelo.

Red-cheeked Cordon-bleu – Schmetterlingsastrild – *Uraeginthus bengalus*

Widespread sightings of small groups at different locations throughout the tour (Debre Libanos, Jemma Valley, Lemi, Lake Ziway, Negele, Yabelo, Lake Langano).

Common Waxbill – Wellenastrild – *Estrilda astrild*

Ca. 10 Ind. eating grass seeds in the garden of Wabe Shebelle hotel in Goba.

Black-cheeked Waxbill – Feenastrild – *Estrilda chamosyna*

Only a single observation of 2 Ind. in acacia savanna south of Yabelo.

Green Twinspot – Tropfengrünestrild – *Mandingoa nitidula*

A small group of (only?) immat. Ind. of this uncommon species in the forest understorey at Wendo Genet.

Yellow-bellied Waxbill – Gelbbauchastrild – *Coccyzygia quartina*

5 Ind. eating grass seeds in the garden of Wabe Shebelle hotel in Goba and further 4 Ind. along the road B90 24 km west of Adaba (3100 m).

Cut-throat Finch – Bandamadine – *Amadina fasciata*

Twice small groups seen east of Negele (in total ca. 30 Ind.) and further observations of small groups at Sabana beach resort (Lake Langano) and Liben lodge (Lake Ziway).

Bronze Mannikin – Kleinelsterchen – *Spermestes cucullata*

3 Ind. at Lake Hora near Bishoftu and 4 Ind. seen on forest floor at Wendo Genet.

Black-and-white Mannikin – Glanzelsterchen – *Spermestes bicolor*

1 Ind. seen on forest floor at Wendo Genet

Pin-tailed Whydah – Dominikanerwitwe – *Vidua macroura*

Hanspeter has spotted two times a single Ind. from the moving car in the south.

Long-tailed Paradise-whydah – Schmalschwanzwitwe – *Vidua paradisaea*

Three times 1 male seen in breeding plumage in Awash area.

Village Indigobird – Rotfusswitwe – *Vidua chalybeata*

1 male and eventually also a female at the shoreline of Lake Langano near Sabana beach resort.

White Nile Sparrow (Shelley's Rufous Sparrow) – Nilsperling – *Passer shelleyi*

3 Ind. well seen together with Grey-capped Social-weaver south of Yabelo.

One of the most common representatives of the family of Waxbills of our tour: a male **Red-cheeked Cordon-bleu** looking for grass-seeds on the floor.



The **Cut-throat** is a rather stocky Waxbill with a sturdy beak. The plumage consists predominantly of different shades of brown with a complex barred and spotted pattern.



The **Swainson's Sparrow**, a widespread species found in open country with bush and scrub, cultivated land and also in towns and villages.



Swainson's Sparrow – Swainsonsperling – *Passer swainsonii* – near endemic to the Horn of Africa

The first birds were seen at Bole Airport in Addis Abeba. Further observations in the northwestern highlands, in the Rift Valley (Bishoftu, Lake Ziway, Awassa, Lake Langano) and in the south around Negele and Yabelo.

Chestnut Sparrow – Maronensperling – *Passer eminibey*

1 immat. Ind. at Liben lodge (Lake Ziway) and further 2 males and 3 females at Sabana beach resort (Lake Langano).

Plain-backed Pipit – Braunrückenpieper – *Anthus leucophrys*

Probably 5-6 Ind. in cultivated land east of Negele and surely 2 Ind. well seen and identified north of Yabelo.

African Pipit – Zimtspornpieper – *Anthus cinnamomeus*

1 Ind. well seen very close at Liben lodge (Lake Ziway).

Long-billed Pipit – Langschnabelpieper – *Anthus similis*

2 Ind. well seen at the view point Gemassa Gedal south of Debre Sina in Ankober mountain range (3250 m).

Tree Pipit – Baumpieper – *Anthus trivialis*

Once or two times heard in Negele area and 2 Ind. seen in dry acacia woodland 32 km east of Negele.

Red-throated Pipit – Rotkehlpieper – *Anthus cervinus*

Twice 1 Ind. heard on the Sululta plains and somewhere en route in the northwestern highlands.

Abysinian Longclaw – Goldhalspieper – *Macronyx flavicollis* – endemic to Ethiopia

Only a single but beautiful observation of a pair in the Gaysay grasslands (Bale Mountains NP).

Mountain Wagtail – Langschwanzstelze – *Motacilla clara*

Beautiful observations of a pair at Awash falls; a single Ind. was seen very close at Wendo Genet.



Pipits are not easy to identify. This **Plain-backed Pipit** has in contrast to several other pipits buffy and no whitish outer-tail feathers.



The **Mountain Wagtail** (this Ind. with crippled feet) occurs along rocky, fast-flowing rivers.

Western Yellow Wagtail – Schafstelze – *Motacilla flava*

The most numerous palaeartic migrant. Widespread sightings of single birds or groups up to >30 Ind. in different habitats in the northwestern and southeastern highlands and in the Rift Valley. Only rarely seen in the south.

African Pied Wagtail – Witwenstelze – *Motacilla aguimp*

Only a single observation of 1 Ind. at Awash river near the Awash falls lodge.

Grey Wagtail – Gebirgsstelze – *Motacilla cinerea*

Only once seen: 1 Ind. at Wendo Genet.

White Wagtail – Bachstelze – *Motacilla alba*

Few observations of single birds near small rivers in the northwestern highlands, 1 Ind. at Lake Ziway and 1 Ind. along the road from Goba to Robe in the southeastern highlands.

Abyssinian Citril – Dünnschnabelgirlitz – *Crithagra citrinelloides*

At least 2 Ind. (subadult male and female) seen in the northwestern highlands along the road to Lemi, 19 km east of Maketuri.

Reichenow's Seedeater – Reichenowgirlitz – *Crithagra reichenowi*

Only seen in the vicinity of Negele: In total ca. 40 Ind. at different sites; 1 pair seen while building a nest.

Salvadori's Seedeater – Salvadorigirlitz – *Crithagra xantholaema* – endemic to Ethiopia

We encountered 3 Ind. of this extremely rare species – together with Reichenow's Seedeater – in dry acacia woodland 32 km east of Negele.

White-bellied Canary – Weissbauchgirlitz – *Crithagra dorsostrata*

At least 1 male and 1 female seen in Yabelo area.

Brown-rumped Seedeater – Rüppellgirlitz – *Crithagra tristriata* – endemic to the Horn of Africa

Only seen at higher altitudes in the northwestern highlands (1 Ind. with nesting material at Debre Libanos) and in the southeastern highlands (Goba, Gaysay grasslands in Bale Mountains NP).

Ankober Serin – Ankobergirlitz – *Crithagra ankoberensis* – endemic to Ethiopia

Unfortunately only heard near view point Gemassa Gedal south of Debre Sina in Ankober mountain range.

Streaky Seedeater – Strichelgirlitz – *Crithagra striolata*

Widespread sightings of single birds or small groups at higher altitudes (Debre Libanos, Gemassa Gedal in Ankober mountain range, Goba as well as Sanetti plateau and Gaysay grasslands in Bale Mountains NP) and only two observations below 2000 m at Bishoftu and at Wendo Genet respectively.

Ethiopian Siskin – Schwarzkopfgirlitz – *Serinus nigriceps* – endemic to Ethiopia

Small to big flocks (in total > 100 Ind. on 2.12.) were seen on the Sanetti plateau and in the Gaysay grasslands in Bale Mountains NP.



The **Ethiopian Siskin** (here a male with a black hood), another endemic species of the Ethiopian highlands.

Ortolan Bunting – Ortolan – *Emberiza hortulana*

3 Ind. and 1 Ind. seen in cultivated land in the northwestern highlands.

Cinnamon-breasted Bunting – Bergammer – *Emberiza tahapisi*

We observed singing males near the Portuguese bridge at Debre Libanos and along the road from Lemi to the Jemma Valley. Another singing male north of Yabelo was likely seen by Michael.



*The song of this male **Cinnamon-breasted Bunting** is a rather monotonous repeated scratchy phrase of mainly falling notes.*

Mammals

Sequence and taxonomy after BURGIN, C.J., WILSON, D.E., MITTERMEIER, R.A., RYLANDS, A.B., LACHER, T.E. & W. SECHREST (2020): Illustrated Checklist of the Mammals of the World. Two volumes. Lynx Edicions, Barcelona.

† Aardvark – Erdferkel – *Orycteropus afer*

A roadkill (see <https://www.inaturalist.org/observations/71698655>) on the main road C80 ca. 20 km north of Yabelo. We probably found burrows of this species elsewhere (Sululta Plains, Awash NP).

Rock Hyrax – Klippschliefer – *Procavia capensis*

In total 18 Ind. in the big cliffs east of Lemi and 2 Ind. on a rock above a lava-field along the main road A1, 28 km W of Metehara in the Awash Valley.

Olive Baboon – Anubis-Pavian – *Papio anubis*

Lots of observations of small or medium-sized harems of this adaptable species throughout the tour (Debre Libanos, en route between Adama and Awash and within Awash NP, Gaysay grasslands in Bale Mountains NP, en route between Kipre Mengist and Negele and at Wendo Genet).

Hamadryas Baboon – Mantelpavian – *Papio hamadryas*

Only a short observation of a band of more than 100 Ind. along the main road A1, ca. 5 km west of Awash town. Olive and Hamadryas Baboons hybridize in the Awash area, but we certainly saw phenotypically unambiguous Hamadryas males.

Gelada – Dschelada – *Theropithecus gelada* – **endemic to Ethiopia**

We saw harems of this unique and endemic species at Debre Libanos and at Gemassa Gedal south of Debre Sina within Ankober mountain range. In the Jemma Valley we observed 2 presumably young males.

Grivet Monkey – Äthiopien-Grünmeerkatze – *Chlorocebus aethiops*

We saw several groups in the forest remnants at Debre Libanos (> 30 Ind.), in Awash NP (i.a. 2-3 very tame individuals at Awash falls lodge), in Awassa town and at Wendo Genet (i.a. with new born babies). No observation in the south, where the Vervet Monkey *Chlorocebus pygerythrus* would be found.

Mantled Guereza – Guereza – *Colobus guereza*

We observed this species in Awash NP (2 Ind. in riparian forest near Awash river), en route between Hagere Selam and Bore (2700 m) and at Wendo Genet (single Ind. in secondary forest and a family with a new born completely white baby within the garden of Wabe Shebelle hotel).



Geladas show a marked sexual size dimorphism and their social structure is dominated by one alpha male.



***Geladas** are the only primates that are primarily graminivores and grazers. They are endemic to the central Ethiopian plateau and live at altitudes from 1800 to 4400 m above sea level. They use the cliffs for sleeping and the montane grasslands for foraging.*



*The **Grivet Monkey** is a very adaptable species and can be found in open savannah woodland, forests and also near human settlements.*



*Males of **Grivet Monkeys** have a beautifully colored blue scrotum and a red penis.*

indet. Hare – unbestimmter Hase – *Lepus spec.*

Michael saw a hare in Awash NP, which could not be identified; it was most likely *Lepus habessinicus*.

Ethiopian Highland Hare – Äthiopischer Hochlandhase – *Lepus starcki* – endemic to Ethiopia

Hanspeter and Meseret saw 1 Ind. of this highland-endemic on the Sanetti plateau in Bale Mountains NP.

Giant Root Rat – Riesenmaulwurfsratte – *Tachyoryctes macrocephalus* – endemic to Ethiopia

1 Ind. of this bizarre species on the Sanetti plateau in Bale Mountains NP during the rare occasions that it ventures out of its burrow.



The **Giant Root Rat** or **Big-headed African Mole Rat** is a rodent species in the family Spalacidae. It is endemic to Ethiopia's Bale Mountains and is the main prey of the Ethiopian Wolf.

Ethiopian Grass Rat – Äthiopien-Grasratte – endemic to the Horn of Africa

Ca. 5 Ind. near their burrows, ca. 20 km west of Debre Birham in the northwestern highlands (altitude: 2750 m). According to the Handbook of the Mammals of the World (description, distribution) the determination is surely correct. According to recent molecular data (BRYJA et al. 2019: Annotated checklist, taxonomy and distribution of rodents in Ethiopia) *Arvicanthis abyssinicus* only occurs above 3200 m. In this case the observed rats would belong to the *Arvicanthis niloticus* species complex; see <https://www.mammalwatching.com/2021/02/17/need-id-for-grass-rats-from-ethiopia/>

Blick's Grass Rat – Blick-Grasratte – *Arvicanthis blicki* – endemic to Ethiopia

Some Ind. of this high-altitude endemic seen on the Sanetti plateau in Bale Mountains NP; see <https://www.mammalwatching.com/2021/02/17/need-id-for-grass-rats-from-ethiopia/>



Grass rats are conspicuous diurnal rodents and can be easily observed in suitable habitat. We have found two different species: The Ethiopian Grass Rat (left) in the northwestern highlands and the Blick's Grass Rat (right) in Bale Mountains NP.

Unstriped Ground Squirrel – Schlichtborstenhörnchen – *Xerus rutilus*

1 Ind. in open acacia savanna, ca. 8 km north of Yabelo.

Gambian Sun Squirrel – Graufusssonnenhörnchen – *Heliosciurus gambianus*

1 Ind. seen during early-morning forest-excursion at Wendo Genet.

indet. Bats – unbestimmte Fledermäuse – *Chiroptera*

In Bishoftu and in Yabelo we saw medium-sized bats hunting at dusk.

Common Hippopotamus – Flusspferd – *Hippopotamus amphibius*

We found tracks of this species in the garden of Wabe Shebelle hotel in Awassa, very near to Lake Awassa.

Southern Gerenuk – Südliche Giraffengazelle – *Litocranius walleri*

2 females well seen in acacia woodland ca. 35 km south of Yabelo.

Salt's Dik-dik – Eritrea-Dikdik – *Madoqua saltiana*

Several observations of single Ind. in Awash NP; see <https://www.inaturalist.org/observations/68155853>



The unique **Gerenuk** or Giraffe Gazelle is characterised by its long, slender neck and limbs. They are known for their unique feeding behaviour to stand on its two hind legs and uses its two front legs to graze from tree branches.



The **Salt's Dik-dik** is a small antelope found in semidesert bushland and thickets in the Horn of Africa.

Soemmerring's Gazelle – Sömmerring-Gazelle – *Nanger soemmerringii* – endemic to the Horn of Africa

Two times (probably a female and a male) in Awash NP.

Northern Lesser Kudu – Nördlicher Kleinkudu – *Ammelaphus imberbis* – endemic to the Horn of Africa

We saw 1 male and later 1 female on November 29th. and one day later on November 30th, 1 female with 2 large calves within Awash NP.

Bohor Reedbuck – Bohor-Riedbock – *Redunca bohor*

1 pair copulating (1.12.) and a group of 3 Ind. (3.12.) in Gaysay grasslands, Bale Mountains NP.

Mountain Nyala (Gedemsa) – Bergnyala – *Tragelaphus buxtoni* – endemic to Ethiopia

Beautiful views of 1 female (1.12.) and 1 male (3.12.) in Gaysay grasslands, Bale Mountains NP.

Ethiopian Klipspringer – Äthiopien-Klippspringer – *Oreotragus saltatrixoides* – endemic to Ethiopia

1 Ind. in subalpine shrub vegetation (ca. 3600 m) on the lower Sanetti plateau in Bale Mountains NP.

Common Warthog – Warzenschwein – *Phacochoerus africanus*

1 Ind. Awash NP, 6 Ind. (1.12.) and >10 Ind. (3.12.) on Gaysay grasslands, Bale Mountains NP.



We encountered this beautiful male **Soemmerring's Gazelle** in Awash NP, where the species is endangered by habitat degradation particularly by overgrazing by livestock.



A **Northern Lesser Kudu** female in Awash NP.



*A pair of **Bohor Reedbucks** in the foreground and two **Warthogs** in the background grazing on the Gaysay grasslands in Bale Mountains NP.*



*A majestic **Mountain Nyala** male standing in the shadow of a juniper tree in Gaysay grasslands in Bale Mountains NP.*



Because the **Common Warthogs** of the Gaysay grasslands are not hunted, they are not shy at all.

Common Dwarf Mongoose – Zwergmanguste – *Helogale parvula*

A family of ca. 5 Ind. on a termite mound ca. 8 km north of Yabelo; see <https://www.inaturalist.org/observations/70459693>

† African Civet – Afrikanische Zibetkatze – *Civettictis civetta*

A roadkill en route somewhere in the south.

† White-tailed Mongoose – Weisschwanzzichneumon – *Ichneumia albicauda*

Two roadkills found: 1 Ind. ca. 18 km west of Debre Berhan (<https://www.inaturalist.org/observations/70497111>) and 1 Ind. on the main road A8 between Aposto and Dilla

Spotted Hyaena – Tüpfelhyäne – *Crocuta crocuta*

The first and only living Ind. we observed in the northwestern highlands along the road to Lemi, ca. 20 km east of Maketuri. The animal was pursued by shepherd boys, comes running towards us and approaches us within a few meters. Additionally we encountered several roadkills en route (sometimes within towns and cities) throughout the tour.



Another highlight of our journey: A fleeing **Spotted Hyaena** crossing a river in the northwestern highlands.

African Golden Wolf – Afrikanischer Goldwolf – *Canis lupaster*

1 Ind. well seen an identified (<https://www.mammalwatching.com/2021/04/24/need-id-for-a-jackal-from-ethiopia/>) in Awash NP. Further very brief observations of canids east of Negele (3 juveniles) and north of Yabelo (1 ad. Ind.) could not be identified with certainty and may have been this species, Black-backed Jackal *Lupulella mesomelas* or Side-striped Jackal *Lupulella adustus*.



*The African Golden Wolf was previously classified as an African variant of the Golden Jackal *Canis aureus*. Recent DNA-analyses have demonstrated that the Golden Wolf is distinct from the Golden Jackal and more related to the Gray Wolf and the Coyote.*

Ethiopian Wolf – Äthiopischer Wolf – *Canis simensis* – endemic to Ethiopia

Excellent observation of 1 Ind. on the Sanetti plateau, Bale Mountains NP (4095 m). We could observe the Wolf for a longer time within a distance of less than 100 m.



What a great experience to see the rare Ethiopian Wolf in close distance! The observed individual had two or three pieces of prey (rats) in the mouth, most likely feed for the puppies!

Reptiles

Reference book: LARGEN, M. & SPAWLS, S. (2010): The Amphibians and Reptiles of Ethiopia and Eritrea. Edition Chimaira, Frankfurt a.M.

Leopard Tortoise – Pantherschildkröte – *Stigmochelys pardalis*

3 Ind. in captivity at Sabana beach resort near Lake Langano. Furthermore we found a piece of a turtle shell of presumably this species near Yabelo.

Blue-headed Agama – *Acanthocercus (atricollis) gregorii*

Sightings of few Ind. east of Negele (<https://www.inaturalist.org/observations/70628108>) and north of Yabelo as well as at Liben lodge (Lake Ziway); see <https://www.inaturalist.org/observations/70662168>

indet. Gecko – unbestimmter Gecko

We have seen house-dwelling Geckos in our appartements at Debre Libanos, at Awash falls lodge in Awash NP and at Sabana beach resort near Lake Langano but we failed to identify them.

African Striped Mabuya – **Afrikanischer Streifenskink** – *Trachylepis striata*

Twice seen: 1 Ind. on a house wall in Awassa town and 1 Ind. at Liben lodge (Lake Ziway); see <https://www.inaturalist.org/observations/70662082>

Nile Monitor Lizard – **Nilwaran** – *Varanus niloticus*

1 Ind. within the flooded garden of Wabe Shebelle hotel in Awassa and another Ind. near Liben lodge at Lake Ziway; see <https://www.inaturalist.org/observations/70662454>

† Battersby's Green Snake – Battersby-Buschschlange – *Philothamnus battersbyi*

1 freshly killed Ind. of this harmless non-poisonous arboreal species at Liben lodge (Lake Ziway); see <https://www.inaturalist.org/observations/70662692>

Nile Crocodile – **Nilkrokodil** – *Crocodilus niloticus*

In total 17 Ind. (some fishing in the water and most of them resting on the river bank) near Awash falls (Awash NP).



We got pretty close to this medium-sized **Nile Crocodiles** at their resting site, hoping that they have already eaten and are full

Amphibians

Reference book: LARGEN, M. & SPAWLS, S. (2010): The Amphibians and Reptiles of Ethiopia and Eritrea. Edition Chimaira, Frankfurt a.M.

Plain Grass Frog – *Ptychadena anchietae*

We saw only a few not fully grown Ind. presumably of this species near Awash falls lodge; see <https://www.inaturalist.org/observations/66747973>

indet. Frog – unbestimmter Frosch

A big frog concert heard at Lake Awassa from Lake Side Hotel in Awassa at dusk.

Invertebrates (Butterflies)

Danaid Eggfly – *Hypolimnas misippus* (Nymphalidae)

1 Ind. in Awash NP; see

<http://www.lepiforum.de/non-eu.pl?page=1;md=read;id=3154>

<http://www.lepiforum.de/non-eu.pl?page=1;md=read;id=3210>

Spotted Joker – *Byblia lithyia* (Nymphalidae)

1 Ind. in Awash NP; see

<http://www.lepiforum.de/non-eu.pl?page=1;md=read;id=3209>

Yellow Pansy – *Junonia hierta* (Nymphalidae)

1 Ind. on the Liben plains east of Negele; see

<http://www.lepiforum.de/non-eu.pl?page=1;md=read;id=3190>

Walker's Owl – *Erebus walkeri* (Erebidae)

1 Ind. in the garden of Yabelo motel; see

<http://www.lepiforum.de/non-eu.pl?page=1;md=read;id=3129>



The **Walker's Owl** is a big impressive African moth species.

Acknowledgements

We thank our guide Meseret Mekuria for these unforgettable three weeks that we were allowed to spend in Ethiopia during a very difficult and uncertain time (Covid crisis, Tigray conflict) and our friend Martin Roost, who unfortunately could not come with us, but who accompanied us the whole trip in thought and gave us moral support in difficult moments (confiscation of our binoculars at the airport).

Appendix

List of photos (HPB = Hanspeter Bieri, MW = Michael Widmer)

Page	Species	Site	Date	Author
Title	Stresemann's Bushcrow	Road C80, south of Yabelo	07.12.2020	MW
Title	Ruspoli's Turaco	Road D82, north of Konkoma	04.12.2020	HPB
3		Debre Libanos, NW highlands	25.11.2020	MW
4		Cliffs near Lemi, NW highlands	26.11.2020	MW
4		River in NW highlands	25.11.2020	HPB
5		Lemi – Debre Birhan, NW highlands	26.11.2020	MW
5		Lemi – Debre Birhan, NW highlands	26.11.2020	HPB
6		Road A2, Gemassa Gedal, Ankober Mts.	27.11.2020	MW
6	Indet. <i>Lamiaceae</i> (<i>Stachys</i> ?)	Road A2, Gemassa Gedal, Ankober Mts.	27.11.2020	MW
6	<i>Haplocarpha rueppelii</i>	Road A2, Gemassa Gedal, Ankober Mts.	27.11.2020	MW
7		Lake Chelekleka, Bishoftu	28.11.2020	MW
7	Different Waterfowl	Lake Chelekleka, Bishoftu	28.11.2020	MW
8		Lava field near Metehara, Rift Valley	28.11.2020	MW
8		Awash falls	28.11.2020	HPB
9		Awash NP	29.11.2020	MW
9		Awash NP	29.11.2020	HPB
10		Liben lodge, Lake Ziway	01.12.2020	MW
10		Liben lodge, Lake Ziway	30.11.2020	MW
11		Road B90 Dondola – Dinsho, SE highlands	01.12.2020	HPB
11		Road B90 Dondola – Dinsho, SE highlands	01.12.2020	MW
12		Sanetti plateau, Bale Mountains NP	02.12.2020	MW
12	<i>Helichrysum spec.</i>	Sanetti plateau, Bale Mountains NP	02.12.2020	MW
12	<i>Sedum mooneyi</i>	Sanetti plateau, Bale Mountains NP	02.12.2020	MW
13	<i>Lobelia rhynchopetalum</i>	Sanetti plateau, Bale Mountains NP	02.12.2020	MW
13		Sanetti plateau, Bale Mountains NP	02.12.2020	MW
14	<i>Hypericum revolutum</i>	Goba – Sanetti plateau, Bale Mountains NP	02.12.2020	HPB
14	<i>Kniphofia foliosa</i>	Road B90 Dinsho – Dondola, SE highlands	03.12.2020	HPB
15		Gaysay grasslands, Bale Mountains NP	03.12.2020	MW
15		Gaysay grasslands, Bale Mountains NP	03.12.2020	MW
16		Road D82, north of Konkoma	04.12.2020	HPB
16		Road D82, north of Konkoma	04.12.2020	MW
17		Road D82, north of Bitata	04.12.2020	HPB
17	<i>Euphorbia spec.</i>	Road D82, Bitata – Negele	05.12.2020	HPB
18	Liben Lark	Liben plains, east of Negele	05.12.2020	HPB
18	<i>Ipomoea spec.</i>	Liben plains, east of Negele	05.12.2020	MW
18	<i>Blepharis spec.</i>	Liben plains, east of Negele	05.12.2020	MW
19		Liben plains, east of Negele	05.12.2020	MW
19		Road D82 near Carsa Dek	05.12.2020	HPB
20	<i>Acacia tortilis</i>	Road C80, south of Yabelo	07.12.2020	MW
20	<i>Acacia spec.</i>	Awash NP	29.11.2020	MW
21		Road C80, south of Yabelo	07.12.2020	MW
21	<i>Barleria delamerei</i>	Road C80, south of Yabelo	07.12.2020	HPB
21	<i>Aloe spec.</i>	Road C80, south of Yabelo	07.12.2020	MW
21	<i>Hibiscus flavifolius</i>	Road C80, south of Yabelo	08.12.2020	MW
22		Wendo Genet	09.12.2020	HPB
22		Wendo Genet	09.12.2020	MW
23		Sabana beach resort, Lake Langano	10.12.2020	MW
23		Sabana beach resort, Lake Langano	10.12.2020	MW
24		Side road, Lake Koka – Bishoftu	10.12.2020	MW
24		Side road, Lake Koka – Bishoftu	10.12.2020	MW
25	Harwood's Francolin	Jemma Valley, NW highlands	26.11.2020	HPB
25	Yellow-necked Francolin	Awash NP	29.11.2020	MW
26	Crested Francolin	Awash NP	29.11.2020	HPB
26	Chestnut-naped Francolin	Goba – Sanetti plateau, Bale Mts. NP	02.12.2020	MW
27	White-faced Whistling-duck	Liben lodge, Lake Ziway	01.12.2020	MW
27	Blue-winged Goose	Lemi – Debre Birhan, NW highlands	26.11.2020	MW
28	Speckled Pigeon	Sabana beach resort, Lake Langano	10.12.2020	HPB
28	White-collared Pigeon	Lemi – Debre Birhan, NW highlands	26.11.2020	MW

List of photos (Continuation)

<i>Page</i>	<i>Species</i>	<i>Site</i>	<i>Date</i>	<i>Author</i>
29	Mourning Collared-dove	Sabana beach resort, Lake Langano	09.12.2020	MW
29	Laughing Dove	Sabana beach resort, Lake Langano	09.12.2020	HPB
30	Chestnut-bellied Sandgrouse	Awash NP	29.11.2020	MW
31	White-bellied Go-away-bird	Sabana beach resort, Lake Langano	09.12.2020	MW
31	White-cheeked Turaco	Debre Libanos, NW highlands	25.11.2020	HPB
31	Ruspoli's Turaco	Road D82, north of Konkoma	04.12.2020	HPB
32	Kori Bustard	Road D82, east of Negele	05.12.2020	HPB
32	Buff-crested Bustard	Awash NP	29.11.2020	MW
33	Black-crowned Crane	Awash bridge, Lake Koka (reservoir)	10.12.2020	HPB
33	Rouget Rail	Gaysay grasslands, Bale Mountains NP	03.12.2020	HPB
34	Marabou	Awassa town	03.12.2020	HPB
34	Abdim Stork	Gaysay grasslands, Bale Mountains NP	03.12.2020	HPB
35	African Sacred Ibis	Lemi – Debre Birhan, NW highlands	26.11.2020	MW
35	Hadada Ibis	Awassa town	03.12.2020	HPB
35	Wattled Ibis	Lemi – Debre Birhan, NW highlands	26.11.2020	HPB
36	Black-headed Heron	Lake Chelekleka, Bishoftu	28.11.2020	HPB
37	Hamerkop	Lake Hora, Bishoftu	28.11.2020	HPB
37	Great White Pelican	Liben lodge, Lake Ziway	01.12.2020	HPB
37	African Darter, Long-tailed Cormorant	Liben lodge, Lake Ziway	30.11.2020	MW
38	Spot-breasted Lapwing	Lemi – Debre Birhan, NW highlands	26.11.2020	HPB
40	Rüppell's Griffon (2)	Debre Birhan – Addis Abeba, NW highlands	27.11.2020	HPB
41	Dark Chanting-goshawk	Awash NP	29.11.2020	MW
42	African Fish-eagle	Liben lodge, Lake Ziway	30.11.2020	MW
42	Speckled Mousebird	Sabana beach resort, Lake Langano	10.12.2020	HPB
43	Northern Ground-hornbill	Road D82 near Sekorajide	04.12.2020	MW
43	African Grey Hornbill	Awash NP	30.11.2020	MW
43	Eastern Yellow-billed Hornbill	Awash NP	29.11.2020	HPB
44	Silvery-cheeked Hornbill	Wendo Genet	09.12.2020	HPB
45	Northern Carmine Bee-eater	Liben lodge, Lake Ziway	01.12.2020	HPB
45	Ethiopian Bee-eater	Bishoftu	28.11.2020	HPB
45	Little Bee-eater	Liben lodge, Lake Ziway	01.12.2020	HPB
46	Lilac-breasted Roller	Road D82, Bitata – Negele	04.12.2020	MW
46	Abyssinian Roller	Awash NP	28.11.2020	HPB
47	Pied Kingfisher	Liben lodge, Lake Ziway	01.12.2020	MW
47	Woodland Kingfisher	Liben lodge, Lake Ziway	01.12.2020	MW
48	Nubian Woodpecker	Liben lodge, Lake Ziway	30.11.2020	HPB
48	Yellow-breasted Barbet	Road A1, 28 km west of Metehara	28.11.2020	MW
49	Banded Barbet	Sabana beach resort, Lake Langano	09.12.2020	MW
49	Black-billed Barbet	Sabana beach resort, Lake Langano	09.12.2020	MW
50	African Pygmy-falcon	Road C80, south of Yabelo	07.12.2020	HPB
50	Ethiopian Black-headed Oriole	Wendo Genet	09.12.2020	HPB
51	Western Black-headed Batis	Sabana beach resort, Lake Langano	10.12.2020	HPB
51	Ethiopian Boubou	Lake Hora, Bishoftu	28.11.2020	HPB
52	Grey-backed Fiscal	Road C80, north of Yabelo	07.12.2020	HPB
53	Cape Crow	Lemi cliffs	26.11.2020	HPB
53	Thick-billed Raven	Road C80/A8 near Agere Maryam	08.12.2020	HPB
54	Red-faced Crombec	Sabana beach resort, Lake Langano	09.12.2020	HPB
55	Rattling Cisticola	Liben lodge, Lake Ziway	01.12.2020	HPB
55	Ethiopian Cisticola	Goba – Sanetti plateau, Bale Mountains NP	02.12.2020	HPB
56	Ethiopian Swallow	Liben lodge, Lake Ziway	01.12.2020	MW
58	Abyssinian Catbird	Goba – Sanetti plateau, Bale Mountains NP	02.12.2020	HPB
58	Rufous Chatterer	Lake Hora, Bishoftu	28.11.2020	HPB
59	African Spotted Creeper	Awassa town	03.12.2020	HPB
59	Red-billed Oxpecker	Sululta plains, NW highlands	24.11.2020	HPB
60	Rüppell's Starling	Sabana beach resort, Lake Langano	09.12.2020	HPB
60	Superb Starling	Awash NP	30.11.2020	MW
61	Groundscraper Thrush	Lemi – Debre Birhan, NW highlands	26.11.2020	MW
61	African Dusky Flycatcher	Wendo Genet	09.12.2020	HPB
62	Northern Black-flycatcher	Sabana beach resort, Lake Langano	10.12.2020	HPB
62	Little Rock-thrush	Debre Libanos, NW highlands	25.11.2020	HPB

List of photos (Continuation)

Page	Species	Site	Date	Author
63	Rusty-breasted Wheatear	Road A3, ca. 10 km south of Maketuri	24.11.2020	HPB
63	Sombre Rock Chat	Road A1, 28 km west of Metehara	28.11.2020	HPB
64	Abyssinian Wheatear	Sabana beach resort, Lake Langano	10.12.2020	HPB
64	Scarlet-chested Sunbird	Liben lodge, Lake Ziway	01.12.2020	HPB
65	White-browed Sparrow-weaver	Liben lodge, Lake Ziway	30.11.2020	HPB
67	Red-cheeked Cordon-bleu	Liben lodge, Lake Ziway	30.11.2020	MW
67	Cut-throat	Sabana beach resort, Lake Langano	09.12.2020	HPB
67	Swainson's Sparrow	Sabana beach resort, Lake Langano	09.12.2020	HPB
68	Plain-backed Pipit	Road C80, south of Yabelo	07.12.2020	HPB
68	Mountain Wagtail	Wendo Genet	08.12.2020	HPB
69	Ethiopian Siskin	Sanetti plateau, Bale Mountains NP	02.12.2020	HPB
70	Cinnamon-breasted Bunting	Jemma valley	26.11.2020	MW
71	Gelada (male)	Debre Libanos, NW highlands	25.11.2020	HPB
72	Gelada	Debre Libanos, NW highlands	25.11.2020	HPB
72	Grivet Monkey	Wendo Genet	08.12.2020	MW
72	Grivet Monkey (male)	Awash NP	29.11.2020	MW
73	Giant Root Rat	Sanetti plateau, Bale Mountains NP	02.12.2020	MW
73	Abyssinian Grass Rat	Deneba – Debre Birhan, NW highlands	25.11.2020	HPB
73	Blick's Grass Rat	Sanetti plateau, Bale Mountains NP	02.12.2020	HPB
74	Gerenuk	Road C80, south of Yabelo	07.12.2020	MW
74	Salt's Dik-dik	Awash NP	30.11.2020	MW
75	Soemmerring's Gazelle	Awash NP	29.11.2020	MW
75	Northern Lesser Kudu	Awash NP	29.11.2020	HPB
76	Bohor Reedbuck	Gaysay grasslands, Bale Mountains NP	01.12.2020	MW
76	Mountain Nyala	Gaysay grasslands, Bale Mountains NP	03.12.2020	HPB
77	Common Warthog	Gaysay grasslands, Bale Mountains NP	01.12.2020	MW
77	Spotted Hyaena	Ca. 20 km east of Maketuri, NW highlands	25.11.2020	HPB
78	African Golden Wolf	Awash NP	28.11.2020	MW
78	Ethiopian Wolf	Sanetti plateau, Bale Mountains NP	02.12.2020	MW
79	Nile Crocodile	Awash NP, Awash falls	28.11.2020	MW
80	Walker's Owl	Yabelo motel garden	07.12.2020	HPB
83		Liben plains, east of Negele	05.12.2020	MM



Hanspeter Bieri, Im Gehren 5, CH-8231 Hemmental; Papageitaucher@hotmail.com
 Michael Widmer, Salstrasse 108, CH-8400 Winterthur; michi_widmer@bluewin.ch