

Paint Shop™ Pro® 9 Reviewer's Guide



Paint Shop Pro 9 Reviewer's Guide

Introduction

New Paint Shop Pro 9 challenges users to stretch the limits of their imagination. These users know what they want – whether it's a photo, graphic, or digital art; Paint Shop Pro 9 is going to help them get that vision they have in mind out of their head and onto the screen.

Regardless of what kind of pictures they are taking, photographers all have one thing in common and that's a desire for tools that give them the best results possible. Paint Shop Pro 9 provides these precise tools. It offers infinite editing possibilities for photos that will pop.

But Paint Shop Pro 9 isn't just for digital photographers. With it's sophisticated graphic design and art media tools, it appeals to graphic artists, business professionals, digital artists, and Web designers alike. With Paint Shop Pro, these users get the tools they need to push their imagination and express themselves through any medium they choose.

Let us introduce the newest advanced tools for advanced imaginations.

New Features

- Digital Camera Noise Removal Filter
- Raw Camera Image Support
- Chromatic Aberration Removal Filter
- Fill Flash Filter
- Backlighting Filter
- Art Media
 - Tools
 - Materials
 - Mixer Palettes
- Symmetric Shape Tool
- History Palette
- Selective Undo
- Resource Categorization
- Vertical Text
- Radial Blur filter
- Add captions in print layout

Paint Shop Pro 9 Reviewer's Guide

New Feature Highlights

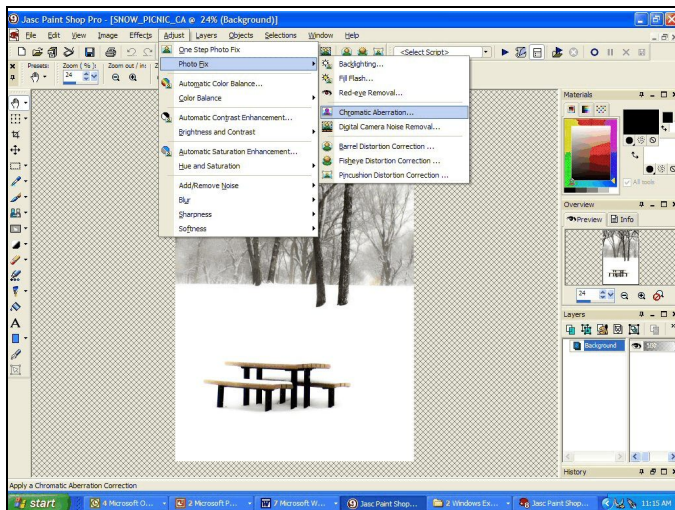
Everything users need is right here. There's a lot packed into this program but we know their imaginations are ready for the challenge.

Photo

Unlimited: Infinite editing possibilities help users create photos that pop

New, in Version 9 are professional-strength photo editing filters that will reduce the time spent producing the results photographers demand in their photos. These tools include the Chromatic Aberration Removal Filter, Noise Removal Filter, and the Fill Flash and Backlighting Filters. Version 9 also supports RAW camera images, allowing you to set custom white balance, exposure, and sharpening levels when converting raw camera images.

The **Chromatic Aberration Removal Filter** eliminates the colored glow that often appears in the high-contrast areas of digital photos.



To use this filter choose **Adjust > Photo Fix > Chromatic Aberration**.

Note: It's critical in using this dialog that the preview windows are shown. Make sure the **Show/Hide Previews** button is active.

Use the Zoom in, Zoom out, or navigate buttons to zero in on the problem area. In the left preview window define the range by dragging the cursor to enclose problem area(s). Mark the **Show Differences** check box to show

which image areas will be affected. The affected areas will appear in the right preview window as white areas on black. The brighter (whiter) the area, the higher the degree of correction that will be applied.

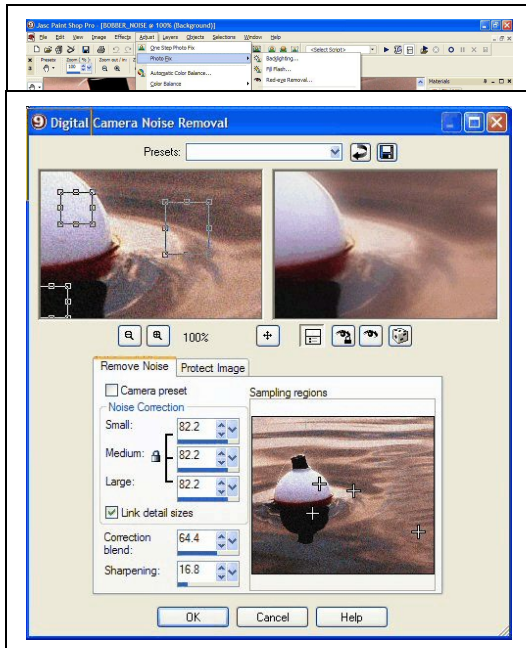
Note: If Show Differences is marked, click the **Auto Proof** or the **Proof** button to preview the results on the image itself.

Set the **Radius** (located to the left of the List of Samples area). The default value is 10. Usually values in the range of 4 to 20 produce the most acceptable results.

Mark the **Result on New Layer** box if you would like to automatically create a new raster layer and protect your original. Click **OK** to apply the corrections.

Paint Shop Pro 9 Reviewer's Guide

The tiny, non-uniform speckles that sometimes appear in digital photos are referred to as "noise." The **Digital Camera Noise Removal Filter** scans photos and removes noise while intelligently preserving the photo's textures. The noise removal can be customized by defining specific regions or color ranges, and the results can be saved to use later on other photos.

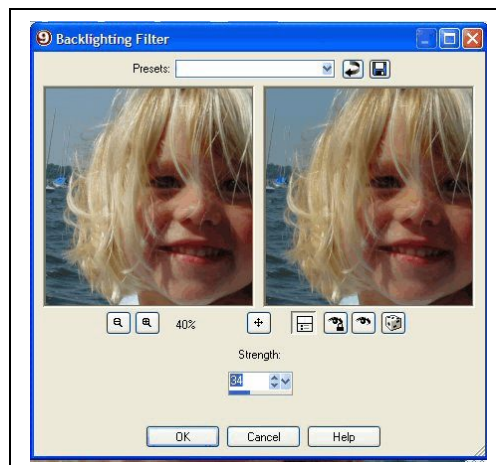
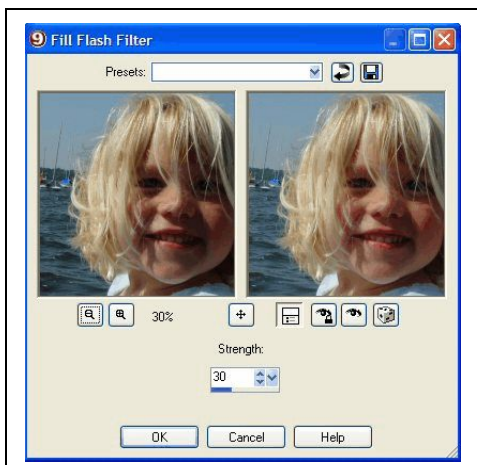


To use this filter choose **Adjust > Photo Fix > Digital Camera Noise Removal**.

Define your sample areas by moving the correction boxes and/or creating new ones in the left preview pane. Adjustments can be made on the **Remove Noise** tab. Use the **Sharpening** setting to sharpen the image after the noise reduction is applied.

To save the current settings as a preset specific to this image and camera, mark the **Camera preset** check box, and then click the **Save** button found in the Presets drop-down at the top of the dialog.

The **Backlighting Filter** allows you to darken the bright, overexposed areas of a photo. To use this choose **Adjust > Fix Photo > Backlighting Filter**. If you have a photo that has just enough of a problem with too-light areas as well as too-dark areas, try running the **Backlighting Filter** on the photo, followed by the **Fill Flash Filter**. The lighter areas will be darkened. Use the Strength value to determine how much backlight or fill flash to add.



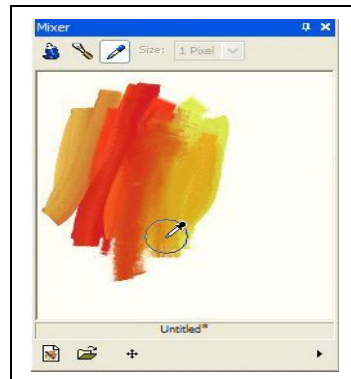
Art

Unleashed: Art tools that will push imaginations to their limit

Create digital works of art with brush tips and tools that accurately emulate real-world media and painting styles. To use the new art media tools open a new image, then choose the art media tool you want to use from the **Tools Toolbar**. Once you select a tool, adjust the appropriate options on the Tool Options palette.

Working in conjunction with the Mixer palette, the Art Media tools let you create digital artwork that closely mimics real-world media,

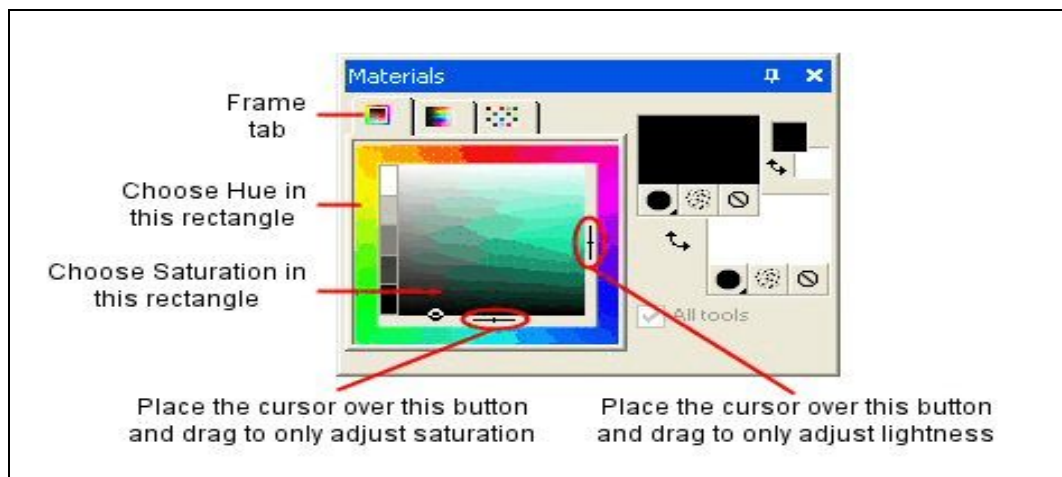
pigments, paints, and artist's tools. The **Oil Brush** creates realistic paint strokes, while the **Chalk, Pastel, Crayon, Colored Pencil, and Marker** tools are used for making dry-pigment art.



Realistically mix paints using the **Palette Knife** and **Smear Tool** on many different canvas textures. You can even define the paint wetness and dry time.

The **Mixer Palette** allows you to mix any number of colors into a single paint swatch in a manner similar to a traditional artist's palette. With this off-canvas palette, you can mix and experiment with colors just like a real palette, and then use your art media brushes to make realistic strokes simulating the results you get with paint, pastel, pencil, and chalk.

Artists can also use the **Image Tracing** option as an easy way to paint a photograph or other image using realistic brush strokes.



Paint Shop Pro 9 Reviewer's Guide

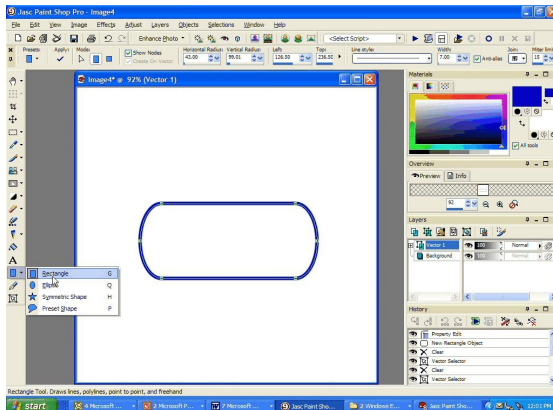
The new **Materials Palette** provides a more intuitive method of setting color.

Graphics

Unconfined: Sophisticated graphic design tools help users express themselves.

Creating vector shapes has never been easier or more powerful. Paint Shop Pro 9 has added new functionality to our precision graphic design capabilities. Three new tools, the Rectangle, Ellipse, and Symmetric Shape, provide all of the controls you need to create buttons, banners, polygons, or any other kind of rectangle or ellipse custom shape.

The Text tool now provides a vertical text layout option, updates to the text on a path feature, as well as new anti-alias rendering options that generate cleaner text at smaller font sizes.



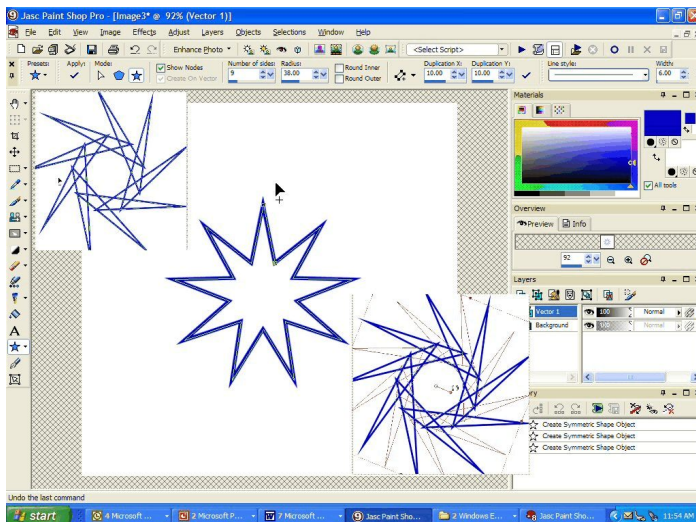
The new **Rectangle Tool** – let's you design buttons, banners and other custom graphics with rounded corners you control.

To use this tool, select the **Rectangle Tool** from the Tools toolbar. Set your **Foreground/Stroke** and **Background/Fill** properties in the **Materials** palette.

In the **Tool Options** palette's Mode section, choose either **Draw Rectangle** or **Draw Square**

Drag the cursor to draw the shape. To edit, simply click the **Edit** button.

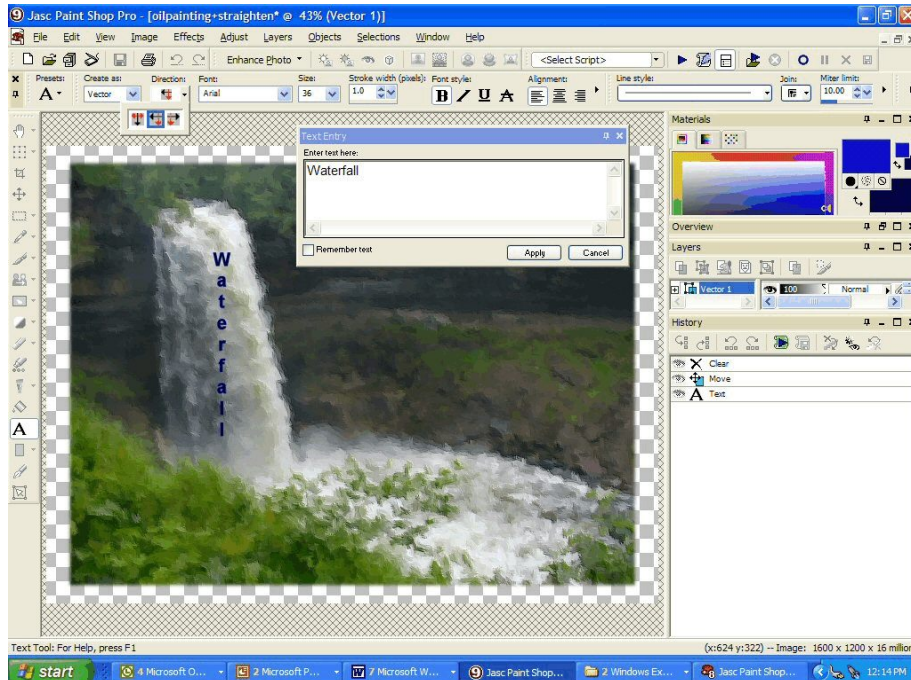
The Symmetric Shape Tool lets you create regular polygons that can be turned into custom shapes.



To use this tool, choose either **Draw Polygon** or **Draw Stellated**. Set your **Foreground/Stroke** and **Background/Fill** properties in the **Materials** palette.

Drag the cursor to draw the symmetric object. To edit the object click, the **Edit** button.

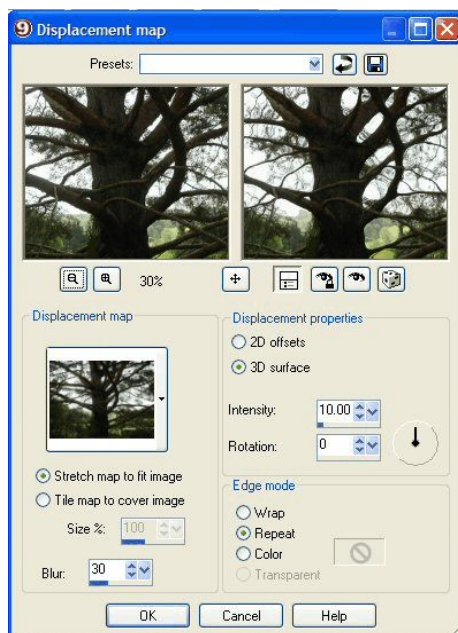
Paint Shop Pro 9 Reviewer's Guide



Text in Paint Shop Pro 9 now includes the option to use vertical text. To use add text, select the **Text** Tool on the Materials palette and make the desired Foreground/Stroke property and Background/Fill property settings. Then choose the type and direction of text on the Tool Options Palette.

The **Displacement Map** allows you to warp or displace an image based on the contents of another image.

To use this tool, Choose **Effects > Distortion Effects > Displacement Map**. Choose an image to use as the displacement map, stretch or tile to cover the image and set the blur.

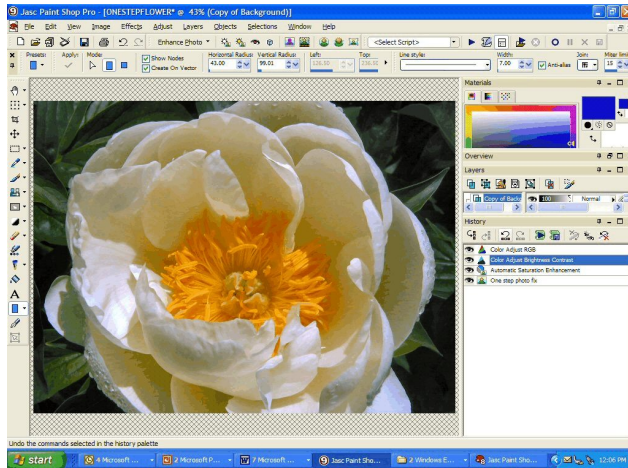


Paint Shop Pro 9 Reviewer's Guide

Productivity

Unrestrained: Flexible, customizable, intuitive tools help users work smarter

Along with Paint Shop Pro's existing time savers, Version 9 features several industry innovations that greatly reduce time spent on production tasks. These include the History Palette and Selective Undo, which when used together help you manage and save time on complex editing projects.



The History Palette lists each command you apply to the active image. The most recent action appears at the top of the list. You can then selectively undo any command without affecting subsequent commands.

With the History Palette you can select any number of steps (even non-sequential steps) and save them to the clipboard, as a Quickscript.

Paint Shop Pro 9 includes Resource Categorization, which lets users organize their Paint Shop Pro resource files by projects or subjects in flexible resource categories.

Adding Text Options in print layout makes it easier than ever to add captions and titles to photo layouts. Or add Image Information and EXIF data to describe photos and graphics. To use this tool, open the image(s) that you would like to print. Then choose **File > Print Layout**.

Drag the images into the layout area on the right, or load an existing template and drag your images into the template's cells. In the Print Layout toolbar, click the **Text Tool**, or choose **Image > Text Field**. Drag the cursor to create the text box. When you release the mouse, the Text Field dialog will appear. Enter the text you want to appear on the printed page.

The Image Browser now contains two tabs, **Find** and **Info**, in the left side of the Browser window. The Find tab contains the familiar Windows Explorer-like navigation view, and the Info tab displays image information, creator data, and **EXIF data**. Additionally, with the Browser active you can choose **File > Sort** and use the Sorting dialog to sort images by EXIF data.

Paint Shop Pro 9 Reviewer's Guide

MINIMUM SYSTEM REQUIREMENTS

- 300 MHz processor or faster
- Microsoft Windows 98SE, 2000 (SP4), ME, XP
- 256 MB of RAM
- 500 MB of free hard drive space
- 16-bit color display adapter at 800x600 resolution
- Microsoft Internet Explorer 6.0 or later

RECOMMENDED SYSTEM CONFIGURATION

- 1.0 GHz processor or faster
- Microsoft Windows XP
- 512 MB of RAM
- 500 MB of free hard drive space
- 32-bit color display adapter at 1024x768 resolution
- Microsoft Internet Explorer 6.0 or later

About Corel

Corel Corporation provides innovative software solutions that help millions of value-conscious businesses and consumers in over 75 countries improve their productivity. The Company is renowned for its powerful software portfolio that combines innovative photo editing and graphics creation, vector-illustration and technical-graphics applications along with office and personal productivity solutions. Corel's flagship products include the CorelDRAW® Graphics Suite, the WordPerfect® Office Suite, the Corel Painter Natural-Media® painting and illustration software and the Paint Shop™ Family of digital photography and image-editing software.

Corel was acquired by San Francisco-based Vector Capital in August 2003, and since that time, has re-established growth for its flagship product lines and achieved multiple consecutive quarters of corporate profitability. Founded in 1985, Corel is headquartered in Ottawa, Canada. For more information, please visit www.corel.com.

Media Contact:

Catherine Hughes
Paint Shop Public Relations
Corel Corporation
1600 Carling Avenue
Ottawa, Ontario
Canada
K1Z 8R7
Phone: 613-728-0826 x 1659
Email: catherine.hughes@corel.com