



IDS[®]



Innovations!

Materials

Dental Technologies

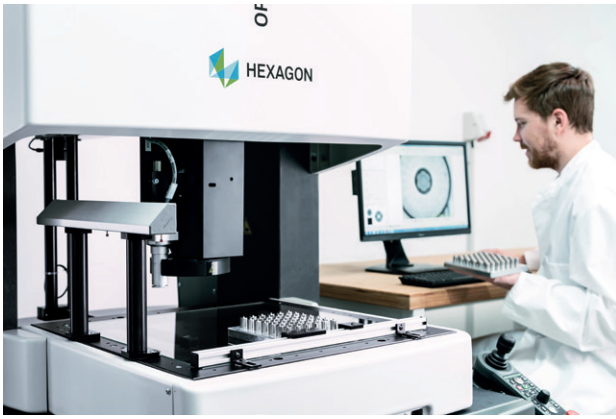
Service



**COORDINATING
THEORY AND
PRACTICE.**

WWE

CAN!

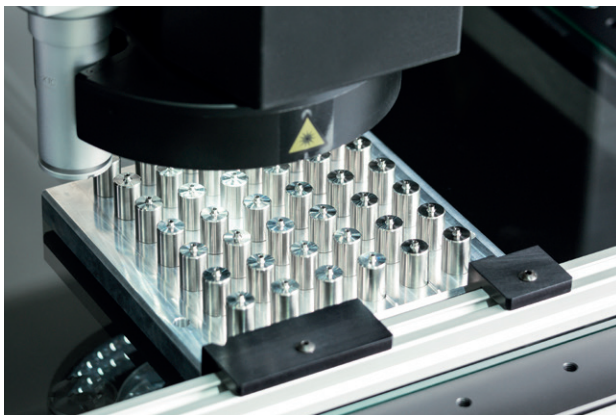


Welcome to your Universe

Dental Direkt is known as Europe's largest manufacturer of innovative zirconia. However, what not everyone knows: We not only manufacture dental materials, but also process them in our milling and technology center. The Dental Direkt Universe thus offers not only a comprehensive product portfolio that goes far beyond zirconium oxides, but at the same time also in-depth know-how regarding the processing of the materials. Our customers and partners can hence rely on the fact that the DD materials are ideally made-to-measure for processing in the laboratory.

Especially against the background of increasing demands and challenges for dental laboratories, every customer benefits from the DD Universe: system concept, material quality, digital technologies, profound know-how.

Made in Germany



» In our milling and technology center, we coordinate theory and practice. Not only our national customers benefit from this, but also our international distributors. Top material quality that is ideally tailored for processing in the (practice) laboratory and thus increases the efficiency of the laboratories can be sold well, not only in Germany. «

Marcel Brüggert, CEO Dental Direkt



PIMP

easy and fast

Easy and fast translucency increasing

DD Incisal X: Effect liquid with that special touch

Simple, fast and targeted increase of translucency in the incisal area – with the DD Incisal X we fulfill this wish for many dental technicians.

The liquid has been specially developed to „pimp“ the incisal area of high-strength zirconium oxide restorations and thus ensure even more esthetic results. DD Incisal X is available in two versions and enables the greatest flexibility in the individualization of your crown and bridge restorations.

In short: Similarly beautiful as a veneer, but without the great effort.

- Two variants for creative working
- Better aesthetics in the incisal area for high-strength, opaque materials
- Aesthetic enhancement without the effort of veneering
- Easy handling and reproducible results due to coordinated systematics

DD Incisal X is suitable for restorations made of DD cube ONE®, DD cube ONE® ML, DD Bio ZX² and DD Bio ZX² color.



» A very practical and brilliant product. A must-have for every laboratory that works with monolithic concepts and simply wants to get more esthetics out of the dental restorations and be prepared for all eventualities. «

Balazs Vegh, Dental Technician and Business Development Manager



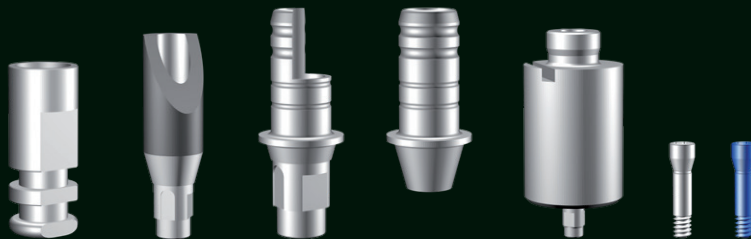
DD Incisal X landing page with a user video and all product information





DDSolid
Protect®

Perfect prosthetics is more than the sum of its parts. With Dental Direkt, you get components and materials that are perfectly matched in terms of function and esthetics – all from a single source. For better results and more satisfied users and patients.



DDSolidConnect[®]



DD Solid Connect[®] landing page
and all important information.



To enable life quality, it is necessary to anchor excellence!

When we have set up our DD Solid Connect® product group for implant prosthetics, our aim from the very beginning was not simply to replicate the implant components, but to develop them further and optimize them to perfection in line with the needs and requirements of the users **(see p. 10)**.



We build impregnable fortresses
DD Solid Protect®

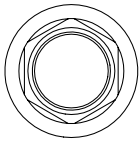
We trust our work and our products. That's the reason for our unique guarantee of protection DD Solid Protect, our quality promise for users and customers of the DD Solid Connect® product group. This protection guarantee covers more than the free material replacement of a new prosthetic restoration. It also offers a comprehensive compensation concept that also reimburses the treatment costs to the dentist and patient in the event of loss. Anyone who is convinced of their quality, as we are, can offer such a guarantee – and you benefit from it.



» We permanently do performance and stress tests with our implant components, because for us safety of use and patient safety are essential «

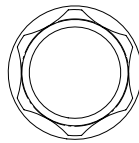
Genephe Mäder,
Project Manager Implant Components

DD Solid Connect® is compatible with the following implant systems:



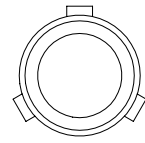
AAS-Series

DENTSPLY Implants®
Astra Tech®



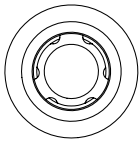
BSK-Series

Bredent
Sky



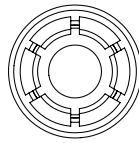
CCA-Series

Camlog®
Camlog®



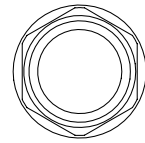
CCO-Series

Camlog®
Conelog®



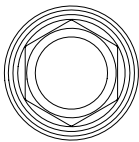
DEV-Series

DENTSPLY Implants®
Astra EV®



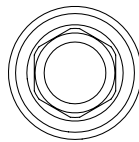
DFX-Series

DENTSPLY Implants®
Frialit® / Xive®



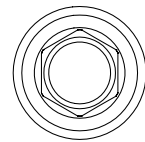
MAR-Series

MegaGen
AnyRidge



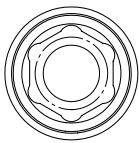
MMI-Series

Medentis Medical®
ICX®



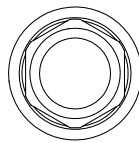
MSE-Series

MIS Implants®
Seven®



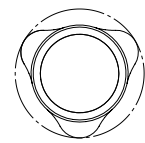
NBR-Series

Nobel Biocare™
Brånemark®



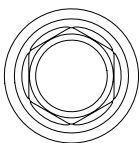
NNA-Series

Nobel Biocare™
Nobel Active™



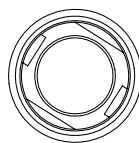
NRE-Series

Nobel Biocare™
Replace Select®



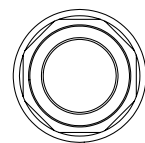
OTS-Series

Osstem Implant
TS



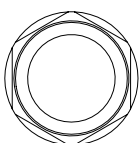
SBO-Series

Straumann
Bone Level®



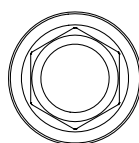
SSY-Series

Straumann
SynOcta®



ZBC-Series

Zimmer Biomet
Certain



ZTA-Series

Zimmer Dental
Tapered Screw-Vent®



Fusion Analog

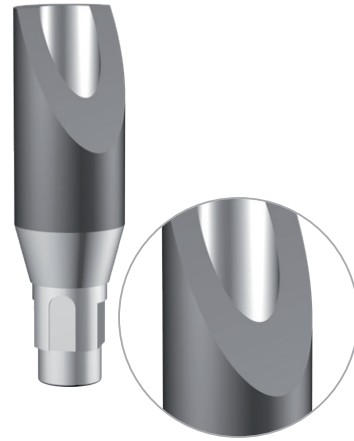
... a fusion of analog and digital

Dentists take both conventional and digital impressions of their patients, therefore dental technicians usually have to rely on two different analogs. With the DD Fusion Analog, this is a thing of the past. Safe use and precise results are ensured by the one-piece design and the acoustic signal when it locks into the correct final position. The extra-long anti-torsion device indicates the correct insertion direction, eliminating the possibility of incorrect positioning. The diameter-related color coding of the DD Fusion Analogs made of Titanium Grade 5 simplifies the processing and prevents components from being mixed up.

- Analog and digital – for 3D and plaster models
- Safe use due to acoustic and perceptible feedback through the click mechanism
- Easy to use due to one-piece design



Fusion Analog landing page with all product information



Scanbody 2.0

... because good is not good enough for us

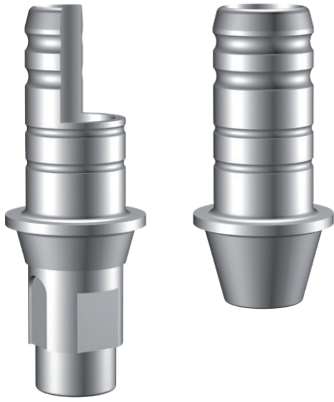
The patented DD Scanbody 2.0 simplifies scanning by simultaneously capturing the X and Y axes and significantly increases the precision of the results. To reduce user effort, the surface has been made non-reflective. The non-reflective surface finish eliminates the need for scan sprays, saving time and money. The clearly visible lasermarking eliminates the risk of mixing up the scan data and allows reliable control of the components used throughout the entire manufacturing process. The DD Scanbody 2.0 also features a greatly reduced volume, making it ideal for narrow and high tooth spaces. Last but not least: The incisal bevel supports easy placement with limited vestibular space.

- Patented design for X and Y axis acquisition
- One-piece titanium – higher precision for large implant work
- No scanspray needed – saves time and money
- Ideal for space constraints due to a small volume and beveled geometry



Scanbody landingpage with all product information.

CLOSE TO YOU



Ti-base 2CUT und Ti-base 2CUT noLock

... twice flexible, clever and ceramic-oriented

With our DD Ti-Base 2CUT titanium adhesive base, which can be shortened at predefined grooves, you can respond individually to every patient case. With a base collar reduced to the absolute minimum of 0.3 mm, esthetically demanding restorations with the lowest gingival height couldn't be easier. Curved anterior crowns with false vertical curvature features are a thing of the past due to the beveled retention sleeve. Mechanical retentions for the adhesive increase the load-bearing capacity and durability of the superstructure without taking up more space.

DD Ti-Base 2CUT is also available in the freely rotating »noLock« version.

DD Solid Fixation System

... flexible all-in-one

The DD Solid Fixation System is a complete solution for laboratories and dental practices for the permanent cementation of all common dental materials; a flexible all-in-one system. The available color-matched DD Solid Link try-in pastes allow you to specify the optimal cement color before placing the restoration.

The two bonders DD Uni Bond and DD Uni Bond D form the basis for the cementation of all dental restorative materials on abutments or tooth structure. The dual-curing composite cement DD Solid Link is the permanent connection between the dental restoration and the substructure.

- »One for all« due to individually shortenable height (6 mm, 5 mm, 4 mm)
- Best anterior esthetics due to beveled sleeve
- Highest durability due to optimized adhesive surface

- Secure adhesion of titanium bases due to excellent bonding values
- Reduction of abutment fractures due to high compressive strength
- High opaque - for complete masking of the titanium bases
- Dual-curing for intraoral and extraoral processing

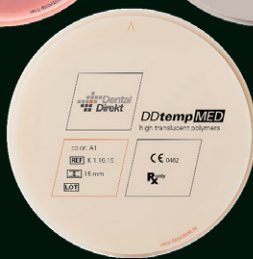
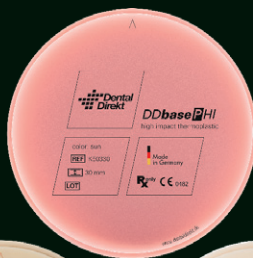


Ti-Base 2CUT landingpage with a user-video and all product information.



DD Solid Link landingpage with all product information.

POLYMER HEROES



Right onto the winner's podium ...

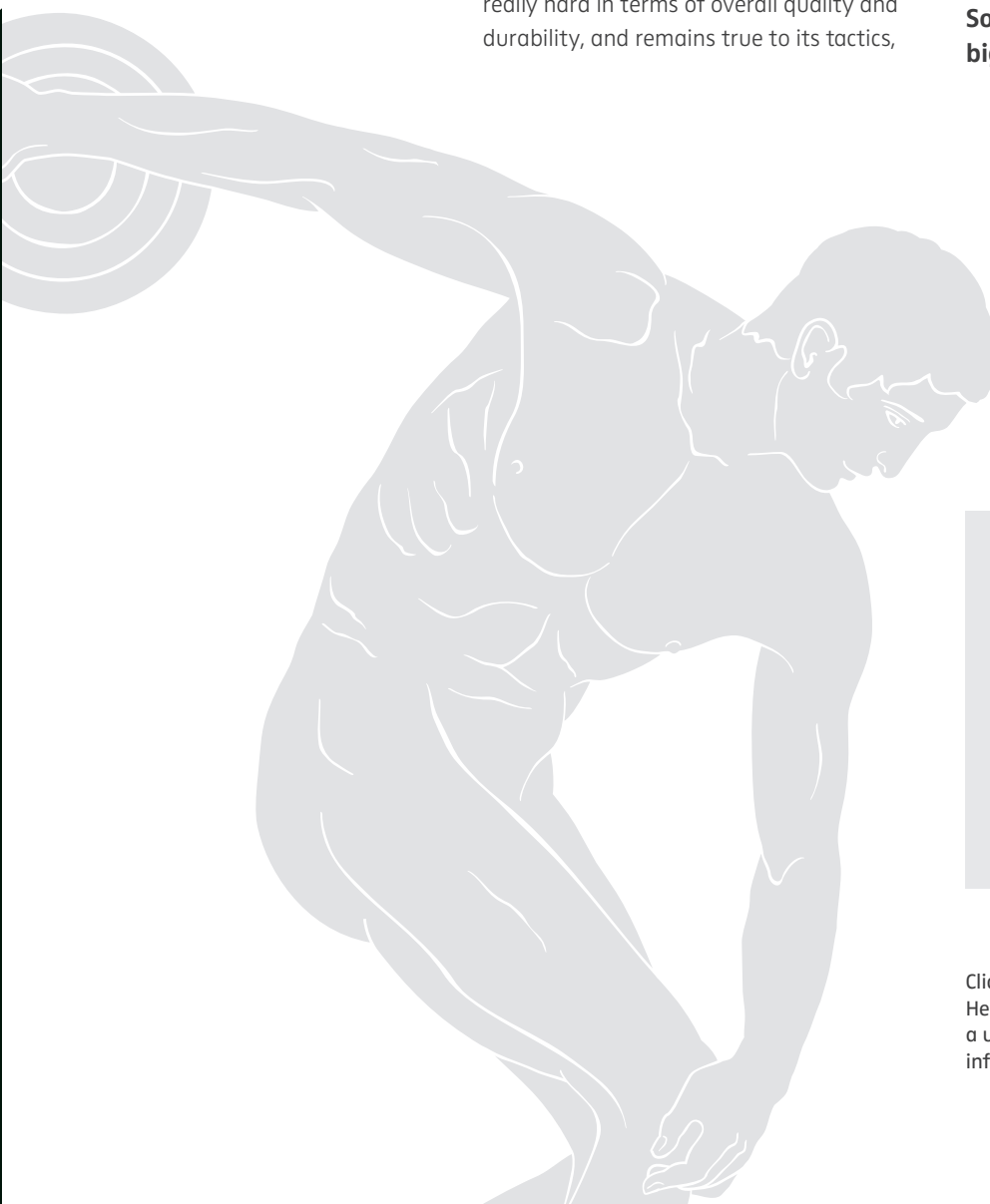
... on the way to a medal, the Olympic heroes shine with extraordinary skills and top performances. Successes that become etched in the collective memory and create legends. People are fascinated by heroes because they show what is possible.

With Polymer Heroes from Dental Direkt, you have a comprehensive range of strong and durable high-performance polymer CAD/CAM materials for all indications. In the process, our development has trained really hard in terms of overall quality and durability, and remains true to its tactics,

which have also led to the winner's podium in the production of DD zirconia: We make no compromises with top dental products and focus purely on quality and safety.

The advantages for dental technicians: Our new materials are tested, clinically proven and 100% biokompatibel. The material composition supports fast milling strategies and saves time and money. Now we are making headway with the new heroes that will be guaranteed success – that's a promise.

So let's give Polymer Heroes the big stage to become legends.



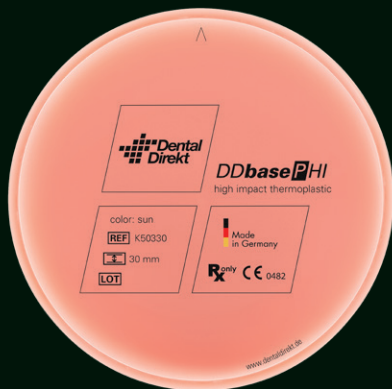
»Made to win:
*the new flexible splint material
DD Bio Splint FLEX definitely
excludes splint breakage.«*

Tanja Bücken-Thielmeyer,
Product Manager

Click here for the Polymer Heroes landing page with a user video and all product information



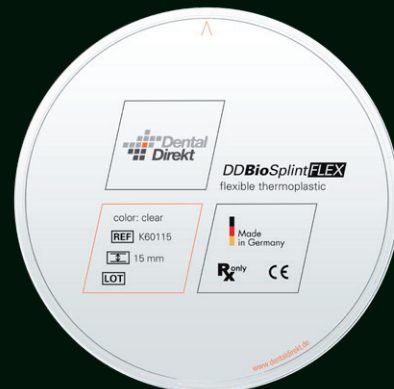
HEROES



DD base P HI – when the right tactics are added to the talent

With the DD base PHI, our ensemble of polymer heroes is complete. The new Gingiva Blank (available in light pink, pink, sun and rouge) is a high-impact material made of PMMA that is quick and easy to mill and polish (i.e. less plaque build-up). In addition to reduced tool wear, you can also look forward to additional cost savings, the easily processable material eliminates the need for cost-intensive diamond-coated milling tools.

- Cost reduction
- Increasing your production capacities
- Increasing patient satisfaction



DD Bio Splint FLEX – an athlete, who inspires with his flexibility

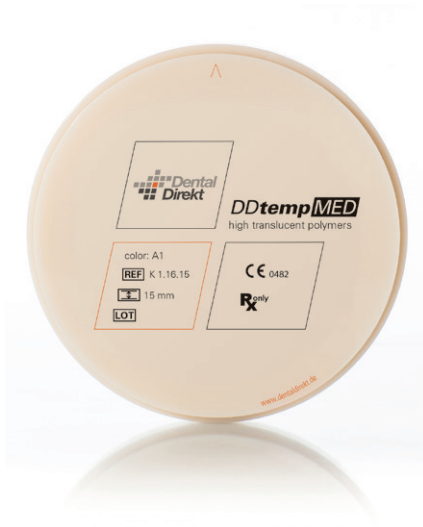
The DD Bio Splint FLEX is the new star in our polymer Heroes ensemble. With its excellent flexible and shock-absorbing properties, DD Bio Splint Flex is ideal for the fabrication of therapeutic functional splints. The PETG material is easy to polish (i.e. less plaque build-up) and bonds easily with conventional cold- and light-curing polymers.

- High chemical resistance
- Reduced risk of fractures
- High wearing comfort
- Flexible material properties



Polymer Heroes landing page
with all product information.

... and the Team



DD temp MED

The highly crosslinked PMMA material impresses with a refractive index close to that of the natural tooth and is suitable for the fabrication of temporary crowns and bridge constructions. The warm color chroma and high translucency ensure attractive esthetics even without veneering and coloring. Due to the light-optical properties, flowing color gradients result.

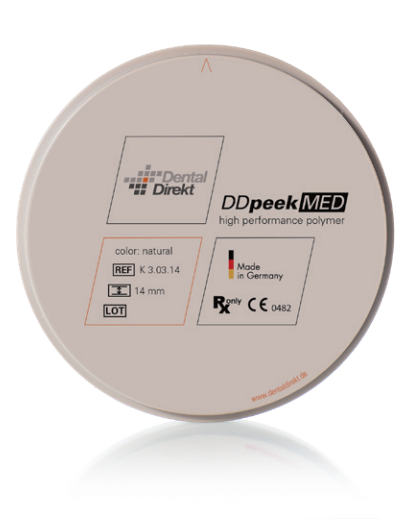
- Lowest water absorption – high plaque resistance
- High fracture strength
- Easy to polish
- Available in 8 VITA®-colors



DD poly X ML – capabilities at different levels

The DD poly X ML blanks are made of multilayer acrylic polymer based on PMMA. The five polymerized layers create a very natural esthetics. Due to its density structure, the material exhibits a low water absorption and therefore high plaque resistance. The high mechanical properties make DD poly X ML suitable for the fabrication of removable (denture teeth) or temporary dentures.

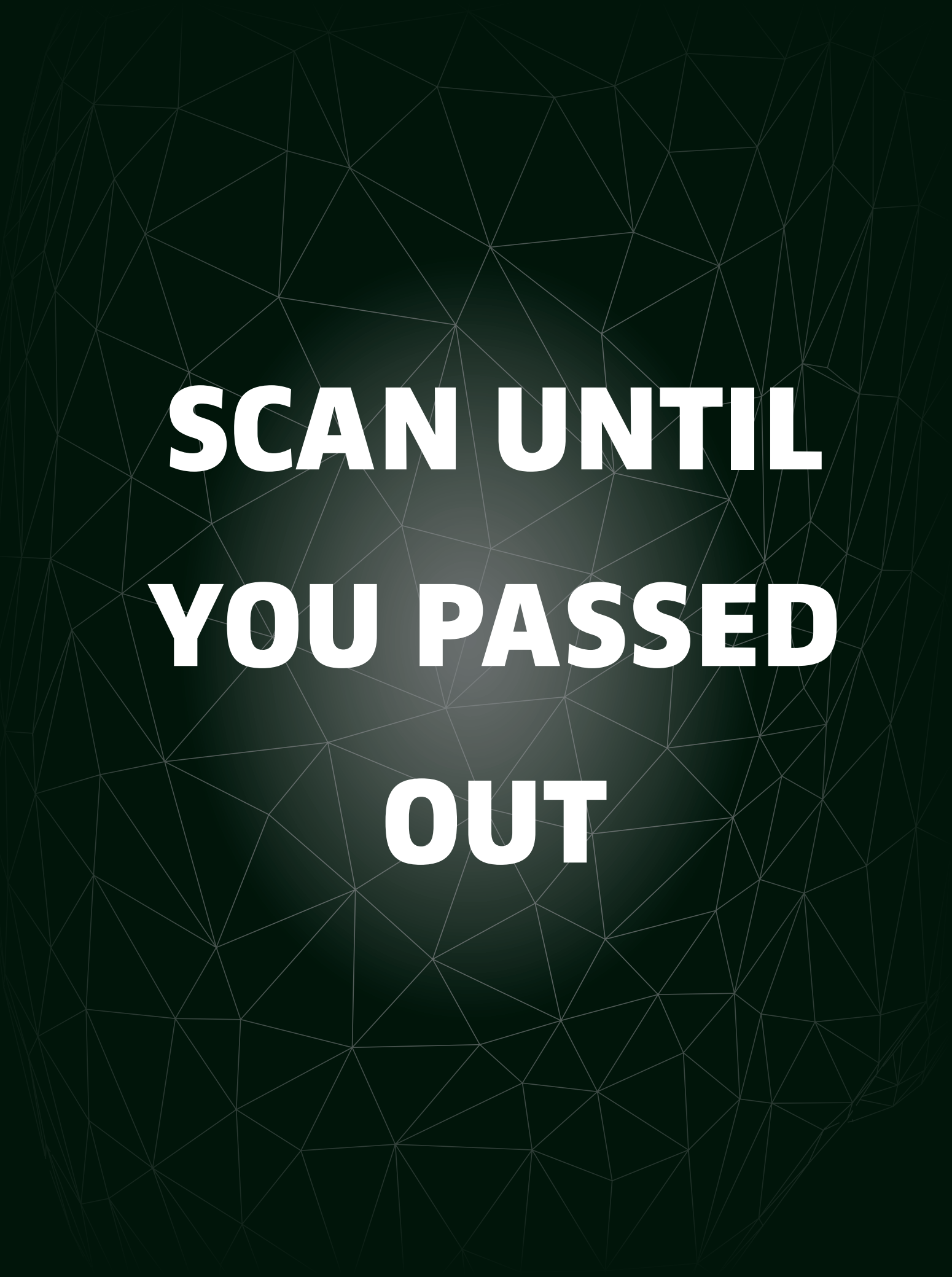
- 5 color layers for a natural aesthetic effect
- Good abrasion resistance
- Good polishing properties
- High mechanical properties
- Free of Bisphenol A
- Available in 7 VITA® colors



DD peek MED – the Polymer Steel

The special feature of DD peek MED is its modulus of elasticity, which is similar to that of human jawbone. In combination with excellent damping and gliding properties, DD peek MED can be used to fabricate fixed or removable dentures (superstructures, abutments for the double crown technique, bar and model casting constructions).

- E-modulus similar to human jawbone
- Durable, resilient and wear resistant
- Excellent damping and gliding properties
- Especially suitable for multi-allergic patients
- Available in 4 colors



**SCAN UNTIL
YOU PASSED
OUT**

MEDIT i700



There is no easier introduction to digital dentistry than with the innovative MEDIT i700 intraoral scanner. The i700 is the product of advanced scanning technology and 20 years of engineering know-how. The newly added remote control mode, an optimized scan tip (180° rotatable / mirror angle 45°), a further increased scan speed (up to 70 FPS) and other advantages increase your efficiency and productivity.

Revolutionize your daily work, transform your patients' treatment experience and unleash the potential of your practice.

- Easy to use
- Saves time and money
- More satisfied patients
- Flexibility through an open system
- Training and installation

On our i700 landing page you can find, among other things, an interview on optical-electronic impressions with valuable tips and tricks from our accounting expert and a value-added calculator with which you can comfortably calculate from how many digital impressions the investment will pay off for your practice.



MEDIT T710

The »cheetah« among laboratory scanners – incredibly fast, sophisticated and stylish. The high-quality hardware and optimized software enable breathtaking scanning speeds (complete jaw scan in 8 seconds) with an accuracy of up to 4 µm. The four high-resolution 5.0 MP cameras eliminate all blind spots and provide detailed data of the entire scan area. Particularly user-friendly is the automatic height adjustment of the correct scan position, which spares stacking additional adapter plates.

- Easy to use
- Saves time and money
- Flexibility through an open system
- Training and installation



On our T710 landing page you can find, among other things, a scan battle video in which our „cheetah“ competes against a market giant. Sit back and enjoy the spectacle.



We calculate
for you
that it
pays off!

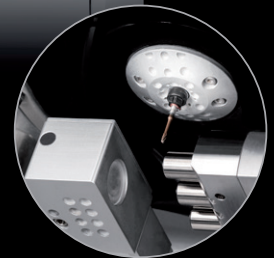
And we bring together
what belongs together.

For the
LAB



PLUS – Direct Disc Technology:

The tool-free blank holder is particularly gentle on presintered zirconia. Milling problems due to stresses in the blank caused by over-tightening or uneven tightening of the fixing screws are prevented.



K-Tec 5+

The »Must-have« Machine

- Long-proven 5-axis technology now with PLUS
- Perfect for »soft« machining of zirconia, polymers, wax
- PLUS: Ionizer for neutralizing the static charge of PMMA
- Premium spindle with 4 hybrid ceramic ball bearings for highest runout accuracy
- »Dental CAM« software included

... and many more



N-Tec 4+

The »Add-on« solution

The special machine for individual abutments and glass ceramics

- 3 prefabs/glass ceramic blanks millable in one clamping
- High accuracy due to single position scanning
- 3 µm repeatability
- Easy tool change due to quick-change tool magazine
- Very easy operation due to »Dental CAM« software

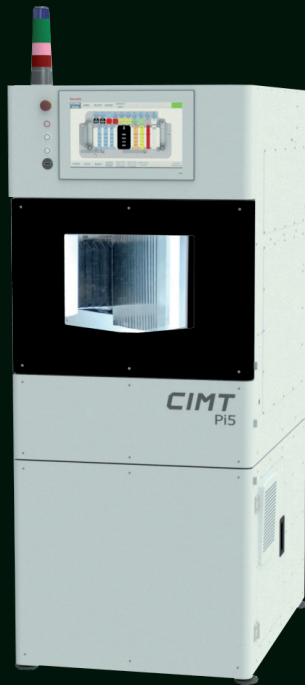
... and many more



Concept milling machines landing page
with all important information



For the
Milling center



CIMT Pi5

center for integrated milling technologies

Fully automated milling

- 5-axis milling machine, steel mineral casting body
- Servo drives in all axes, max. 15 m/min
- 15" touch-screen operation „easy-control“
- Milling spindle, 52,000 rpm, 4.7 kW peak
- One cartridge for 10 blanks and 20 tools
- 10 clamping rings for blanks \varnothing 98 mm
- Tool length probe and 3D measuring probe
- Remote control camera
- Milling of bridges, crowns, model casting, preforms ... in all common dental materials

... and many more



CIMT Pi5 product page



camcube DD30

Premium metal milling machine

- Simultaneous 5-axis machine
- Pneumatic zero point system with solid machine chamber made of cast-iron corpus.
- 90° milling applications
- Integrated unit for wet and dry processing
- Milling spindle: 60.00 rpm, 1,5 kW
- Milling with all common dental materials, especially suitable for implantological works and functional splints

... and many more



camcube DD30 product page

Theory and practice: »The truth lies on the pitch«

So where is the added value for the laboratory or milling center to purchase the machines via Dental Direkt?

Individual milling strategies

Dieter Neunzig: The magic word is: individual milling strategies. We have upgraded our support and application technology and can design individual milling strategies. We not only write coordinated milling strategies, but also test them in practice – laboratories and milling centers thus benefit from the fact that we are a system provider with experience.

Optimization of milling times

Of course, every manufacturer provides CAM software. The disadvantage of the manufacturer's strategies, however, is that desired changes or optimizations are not possible.

Can you explain it?

Dieter Neunzig: Manufacturers provide standard strategies that focus primarily on safety, but this comes with long milling times. This is where our milling and technology center is invaluable, because we have our own materials and tools that we can test until the ideal balance between safety and quality on the one hand and fast milling times on the other is achieved. This is perfect for the customer!

Matching tools and materials

So you're also testing the tools?

Dieter Neunzig: Yes, of course – the advantage is that we can test the manufacturers' original tools directly with our materials in our production. Only when we receive positive feedback from our in-house department regarding quality and milling times we hand over the strategies to our customers. We simply know what we are talking about.

Are custom milling strategies usable by others?

Dieter Neunzig: Our standard DD strategies are tested with all materials and indications and already deliver the best possible milling quality with the fastest possible milling time. And yet there may be customers who have special requirements. In this case, we write and test a milling strategy especially for this customer.

»We know what we're talking about«

The added value for our customers is quickly summed up. Every CAM manufacturer offers a standard package that works. However, almost no CAM manufacturer like us has the opportunity to test the strategies and optimize them for all possible indications. In this context it is also very important that the feedback we receive was and is very good. In this way, we achieve consistency in the workflow! Quality and safety are a need, so that the laboratory can produce good and reproducible milling work in all possible indications without incidents.

Permanence in workflow

The laboratories and milling centers can't optimize the strategies by themselves?

Dieter Neunzig: Writing and optimizing milling strategies is extremely time consuming. But time is money and most people just want a strategy that works. However, if a lab or milling center comes along and wants to optimize our existing standard strategies themselves, we also offer appropriate training. And we also accompany our customers through this process – through support, our new ticket system and the qualified training of our colleagues here.

Does it make a difference whether Dental Direkt optimizes strategies for smaller laboratories or huge milling centers?

Dieter Neunzig: Yes, the smaller laboratories are more concerned that things run smoothly and that the quality fits. Due to the amount of indications and data, the focus of larger milling centers is on quality and the time component. For example, milling tools have to be changed much earlier and more frequently so that the same number of products can be milled in a given time while maintaining the same quality.

Does Dental Direkt have the resources to support both smaller labs and larger milling centers?

Dieter Neunzig: Yes, of course, at any time, and that's what we do. We also have the advantage that – if a customer's system breaks down or perhaps there are no tools available – we can put the customer's mind at rest because of our capacities. The customer can send us his works and we will finish them for him. Due to the size of our support team, we can check in the meantime what's going on with the system.



» I have always been of the opinion that the better the strategies for our customers, the fewer support cases, the more satisfied the customer.«

Dieter Neunzig, CAD/CAM-Developer

The interview with Dieter Neunzig was conducted by a DD journal editorial staff.



DDAccurate*PRO*

Precise like LCD, fast like LED

Compact, powerful, accurate – ready to print.
The perfect same-day solution for digital workflow.

- Over 100 pre-installed material libraries
- High precision: 49 µm pixel size
- 2 years warranty
- Swivel UV filter hood
- Replaceable foil for the resin tank
- Easy replacement of the components

... and many more





VITA ZYRCOMAT® 6100 MS

- Small dimensions, large sintering chamber
 - Speed sintering in 80min
 - Highest accuracy with +/- 2°C
- ... and many more**

With its 3 freely selectable sintering modes, the ZYRCOMAT 6100 MS offers total flexibility for any type of zirconia. The homogeneous heat distribution and the fully automatic VITA Auto adjust calibration ensure perfect results every time. Coloring techniques with liquid's for the individualization of white zirconia are made particularly convenient by the Predry function with seamless transition to the sintering process. Small in size, special attention was paid to the design and unrivaled quiet noise emission.

The separate vPad controls the furnace as a tablet via the 10" touch display in a particular convenient way. 1000 program slots for 11 user profiles, WLAN connectivity with update function, USB and SD card interface as well as the video and photo viewer function offer outstanding comfort and functionality.

Indication:

- Conventional and speed sintering processes up to 1600°C
- Zirconium dioxide and aluminum oxide



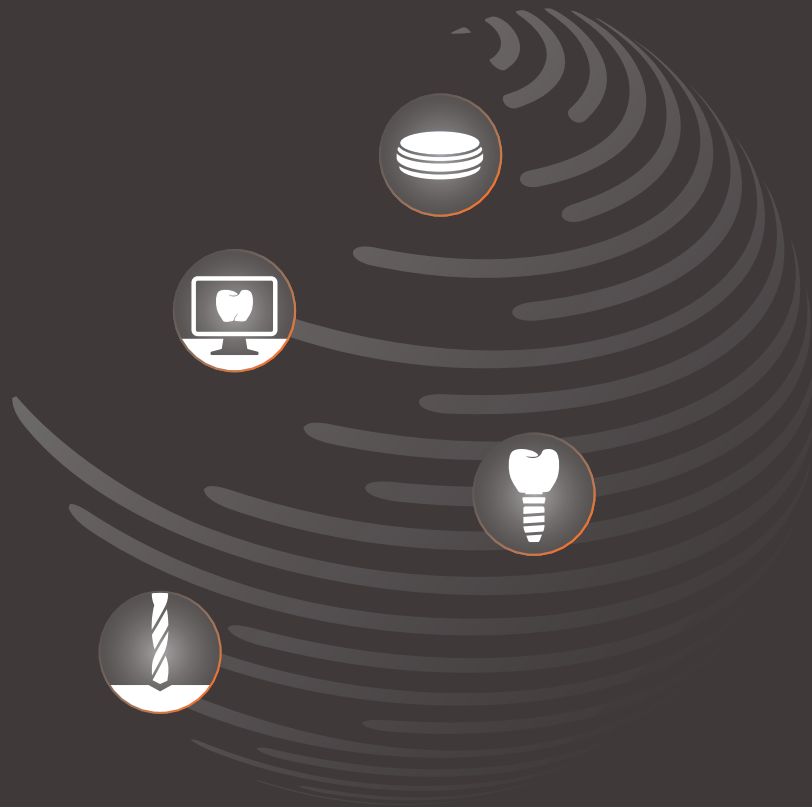
» When I first saw the ZYRCOMAT 6100 MS, I thought nothing would fit in it. I was astonished to find that 80 units do fit in it. The speed sintering function is particularly helpful when a job has to be redone quickly. 80 minutes is a word, especially since the esthetics and quality of the crowns and bridges is convincing. «

Paul Felk, Master Dental Technician



VITA Zyrcomat® product page

Welcome to **your** Universe



Materials

Technologies

Implant Components

Milling Services

* The general terms and conditions of Dental Direkt GmbH, Spenge apply. Names marked with © are trademarks and/or brand names of the manufacturers.

CLOSE TO **YOU**

Dental Direkt GmbH | Tel: +49 5225 86319-0
E-Mail: info@dentaldirekt.de | dentaldirekt.de

