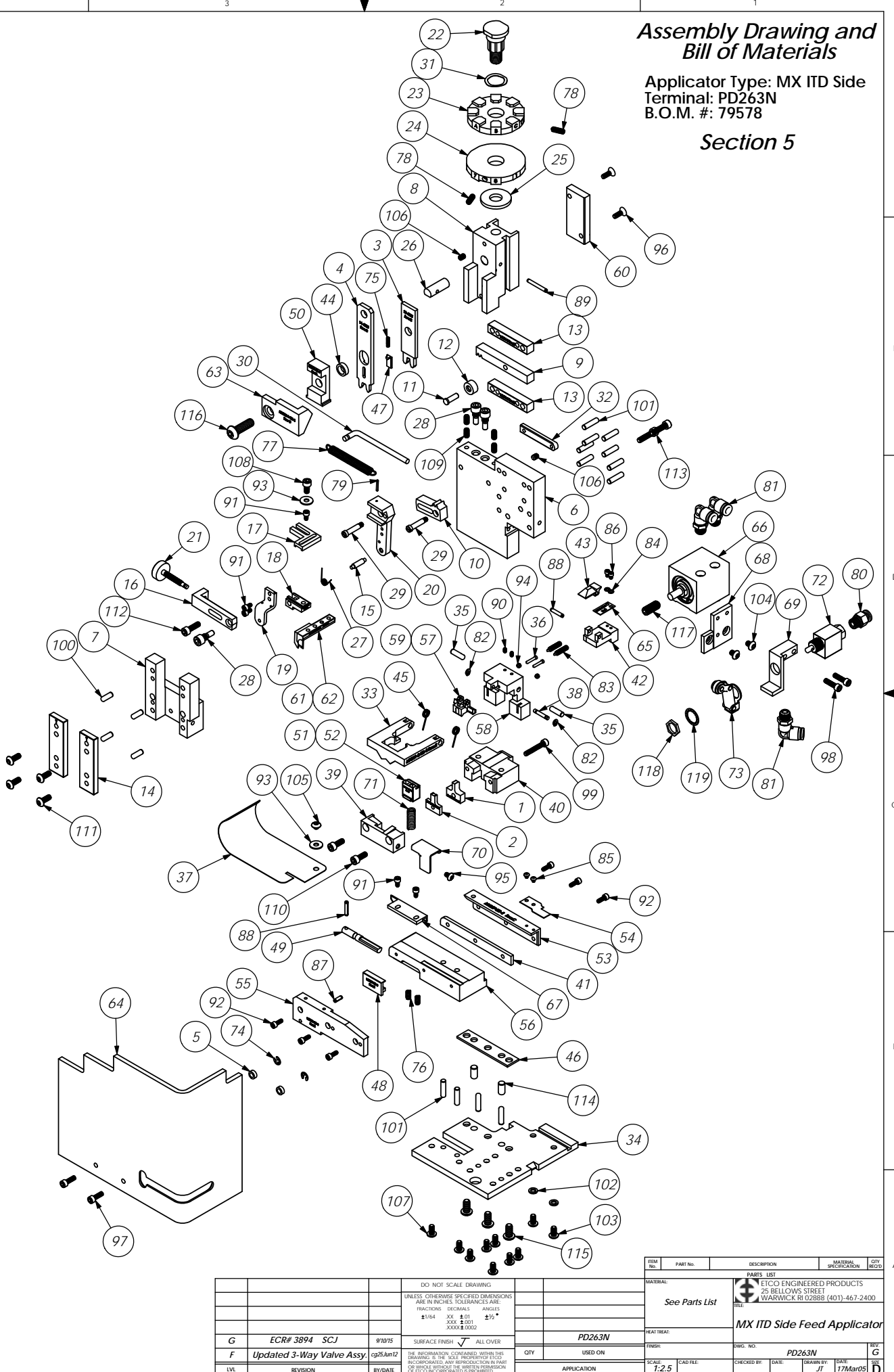


Parts List				Parts List					
Item	Part Code	Part No./File Name	Description	QTY.	Item	Part Code	Part No./File Name	Description	QTY.
1	76880	9-4005	Wire Anvil	1	68	78733	MX358-1-ITD-S	Valve Mounting Plate	1
2	76660	9A-4002	Insulation Anvil	1	69	61993	MX358-2-ITD-S	Valve Mounting Plate	1
3	76879	13-4005	Wire Rolling Tool	1	70	78835	MX360-ITD-S	Scrap Retainer	1
4	76881	14-4005	Insulation Rolling Tool	1	71	72350	5-047x1.000	Compression Spring	1
5	73888	GS-125	Guard Spacer	2	72	72318	Clippard MJV-3	3-Way Valve	1
6	71494	MX2A-S-1	Mounting Frame	1	73	72317	Clippard #12296	Cam Follower	1
7	71030	MX2B-S	Plunger Frame	1	74	75083	Irving 3100-18	External Retaining Ring	2
8	74343	MX3	Ram	1	75	72315	LC-022A-4	Compression Spring	1
9	74438	MX5-S	Cam Rack	1	76	78681	LC-029B-3-M	Compression Spring	2
10	74346	MX6	Gear Arm	1	77	74611	LE-037CD-6	Extension Spring	1
11	74347	MX7	Cam Pin	1	78	70739	McMaster-Carr #3126A53	Spring Plunger	2
12	74350	MX8	Cam Roller	1	79	74447	McMaster-Carr #98296A109	Expansion Pin (1/16 x 1/2")	1
13	74351	MX10-S	Rack Pad	2	80	73222	Pisco PC250-N1U	1/4" x 1/8" NPT Straight	1
14	74352	MX11	Gib	2	81	72352	Pisco PL250-N1U	Ø1/4" x 1/8-NPT Elbow Fitting	3
15	74356	MX12	Feed Finger Pivot Pin	1	82	63200	Truarc #5555-12	Retaining Ring	2
16	74360	MX13	Adjusting Bar	1	83	63201	Vlier #PH-51-P	Spring Plunger	2
17	76868	MX14-1-S	Feed Finger Arm	1	84	63202	4lw	#4 Lock Washer	2
18	76874	MX15-1-S	Feed Finger Guide	1	85	63203	4-40_13bh	#4-40 x 1/8" Button Hd Cap Screw	2
19	74364	MX16	Retainer	1	86	63204	4-40_16sh	#4-40 x 5/32" Socket Hd Cap Screw	2
20	71495	MX18-S-1	Swing Arm	1	87	63205	1.8_38rp	Ø 1/8" x 3/8" Roll Pin	1
21	74376	MX25	Stroke Adjustment Screw	1	88	63053	1.8_63rp	1/8" x 5/8" Roll Pin	2
22	74407	MX33	Mounting Post	1	89	62040	1.8_100rp	1/8" x 1" Roll Pin	1
23	70690	MX34-A	Wire Crimp Dial	1	90	63206	5-40_19ssf	#5-40 x 3/16" Socket Set Screw	2
24	74409	MX35	Insulation Dial	1	91	63207	6-32_25sh	#6-32 x 1/4" Socket Hd Cap Screw	5
25	74411	MX36	Dial Spacer	1	92	63209	6-32_38sh	#6-32 x 3/8" Socket Hd Cap Screw	6
26	74412	MX44	Locating Dowel	1	93	63210	8fw	#8 Flatwasher	2
27	74415	MX45-S	Feed Finger Spring	1	94	63211	8-32_13ssf	#8-32 x 1/8" Socket Hd Set Screw	2
28	74419	MX50	Safety Pivot Pin	3	95	63212	8-32_25bh	#8-32 x 1/4" Button Hd Cap Screw	1
29	71493	MX52-S-1	Pivot Pin	2	96	63052	8-32_50fh	#8-32 x 1/2" Flat Hd Cap Screw	2
30	74614	MX90-S	Spring Bracket	1	97	63164	8-32_50sh	#8-32 x 1/2" Socket Hd Cap Screw	2
31	72310	MX104	Wave Disc Spring	1	98	63162	8-32_63sh	#8-32 x 5/8" Socket Hd Cap Screw	2
32	71678	MX105-S	Pivot Pin Plate	1	99	63213	8-32_100sh	#8-32 x 1" Socket Hd Cap Screw	1
33	76875	MX301-2-ITD-S	Latching Gate	1	100	63158	3.16_50dp	Ø 3/16" x 1/2" Dowel Pin	4
34	72261	MX302-1-ITD-S	Base Plate	1	101	63470	3.16_75dp	Ø 3/16" x 3/4" Dowel Pin	12
35	76563	MX304-ITD-S	Hinge Pin	2	102	78517	10lw	#10 Lockwasher	2
36	76564	MX305-ITD-S	Pin	2	103	63531	10-24_38bh	#10-24 x 3/8" Button Hd Cap Screw	2
37	76566	MX307-ITD-S	Stock Chute	1	104	78687	10-32_25bh	#10-32 x 1/4" Button Hd Cap Screw	2
38	76567	MX308-ITD-S	Latch Pivot Pin	1	105	78327	10-32_13bh	#10-32 x 1/8" Button Hd Cap Screw	1
39	78936	MX309-4-ITD-S	Cut-off Keeper	1	106	63054	10-32_25ss	#10-32 x 1/4" Socket Hd Set Screw	2
40	72257	MX310-1-ITD-S	Die Holder	1	107	78993	10-32_38bh	#10-32 x 3/8" Button Hd Cap Screw	8
41	76570	MX311-ITD-S	Left Feed Shim (1/4")	1	108	70110	10-32_38sh	#10-32 x 3/8" Socket Hd Cap Screw	1
42	72259	MX313-1-ITD-S	Insulation Pusher for 1/4" Terminal	1	109		10-32_38ssf	#10-32 x 3/8" Socket Hd Set Screw	4
43	76573	MX314-ITD-S	Catch	1	110	63056	10-32_50sh	#10-32 x 1/2" Socket Hd Cap Screw	2
44	76574	MX315-ITD-S	Insulation Tool Spacer	1	111	76501	10-32_50bh	#10-32 x 1/2" Button Hd Cap Screw	4
45	76575	MX316-ITD-S	Latch Spring	2	112	70293	10-32_63sh	#10-32 x 5/8" Socket Hd Cap Screw	1
46	76576	MX317-ITD-S	Base Plate Spacer	1	113	63532	10-32_75sh	#10-32 x 3/4" Socket Hd Cap Screw	2
47	76578	MX319-ITD-S	Knock off	1	114	63827	1.4_50dp	Ø 1/4" x 1/2" Dowel Pin	2
48	76579	MX320-ITD-S	Brake	1	115	63632	1.4-20_50bh	1/4-20 x 1/2" Button Hd Cap Screw	3
49	76580	MX321-ITD-S	Brake Actuator	1	116	63055	5.16-18_1.00bh	5/16-18 x 1" Button Hd Cap Screw	1
50	76583	MX324-ITD-S	Cut-off Pad Pusher	1	117	71086	5.16-24_75ssf	5/16-24 x 3/4" Socket Hd Set Screw	1
51	78854	MX326-6-ITD-S	Cut-off Pad	1	118		15.32_32 hex nut	Hex Nut	1
52	71917	MX326-9-ITD-S	Dual Wire Cut-off pad	1	119		1.2lsw	1/2" Internal Star Washer	1
53	76586	MX327-ITD-S	Left Feed Rail	1					
54	76587	MX328-ITD-S	Hold Down Spring	1					
55	76588	MX329-ITD-S	Right Feed Rail	1					
56	76589	MX330-ITD-S	Feed Plate	1					
57	76590	MX331-ITD-S	Latch (Automatic)	1					
58	76591	MX332-ITD-S	Support	1					
59	76592	MX333-ITD-S	Latch (1/4" Wire Stop)	1					
60	76608	MX335-ITD-S	Cam	1					
61	76661	MX337-ITD-S	Feed Finger (fed between carrier and inslu ear)	1					
62	71686	MX337-2-ITD-S	Feed Finger (fed in carrier strip hole)	1					
63	72233	MX338-1-ITD-S	Arm Switch Cam (1 1/8" Stroke)	1					
64	70745	MX339-ITD-S	Guard	1					
65	72260	MX344-1-ITD-S	Leaf Spring	1					
66	72099	MX348-ITD-S	.550 Strike Slide Cylinder	1					
67	72893	MX357-ITD-S	Bracket	1					

NOTE: ITEMS MARKED IN BOLD TEXT ARE HIGH WEAR ITEMS

NOTE:
 (1) Items marked in bold text are high wear items.
 (2) Use OEM replacement tooling only.
 (3) Recommended machine speed for automatic equipment is a maximum of 3500 parts per hour.



Assembly Drawing and Bill of Materials

Applicator Type: MX ITD Side Terminal: PD263N B.O.M. #: 79578

Section 5

REV	DATE	DESCRIPTION	BY	CHKD	APP'D
G		ECR# 3894 SCJ			
F		Updated 3-Way Valve Assy.			
LVL					

DO NOT SCALE DRAWING	UNLESS OTHERWISE SPECIFIED DIMENSIONS ARE IN INCHES TOLERANCES ARE FRACTIONS DECIMALS ANGLES	1/16" ±0.015" 3/32" ±0.010" 1/8" ±0.010" 1/4" ±0.010" 3/8" ±0.010" 1/2" ±0.010" 3/4" ±0.010" 1" ±0.010"
SURFACE FINISH	ALL OVER	
SCALE	1:2.5	
CAD FILE		
CHECKED BY	DATE	DATE
DATE	DATE	DATE

PART NO.	DESCRIPTION	MATERIAL SPECIFICATION	QTY. REQ'D
See Parts List			

DATE	BY	CHKD	APP'D
17Mar05	JT		