

POSODOBITEV
PROSTORSKE
PODATKOVNE
INFRASTRUKTURE
ZA ZMANJŠANJE
TVEGANJ IN
POSLEDIC POPLAV



**Ministrstvo za infrastrukturo in prostor
Geodetska uprava Republike Slovenije**

TOPO & INSPIRE WORKSHOP

Ljubljana, 5. februar 2014

VSEBINA DELAVNICE



POSODOBITEV
PROSTORSKE
PODATKOVNE
INFRASTRUKTURE
ZA ZMANJSANJE
TVEGANJ IN
POSLEDIC POPLAV



DAY 1 – Wednesday FEBRUARY 5 th 2014	
9.00 – 10.30	<p>PLENARY SESSION Plenary INSPIRE + TOPO Welcome speeches and introductions:</p> <ul style="list-style-type: none"> - Background of Sub projects INSPIRE and TOPO: Heads of Slovenia INSPIRE and TOPO subprojects group - Presentation from Norway and Iceland: Tore Høy, and Magnus Karge from Norway and Iceland Eydís Líndal Finnbogadóttir and Gunnar Haukur Kristinnsson from Iceland.
10.30 – 11.00	Coffee break
11.00 – 11.30	<p>Presentation of state of play for INSPIRE implementation and draft of Capacity program for INSPIRE in Slovenia, <i>Tomaž Petek, SMA</i> Rolle of foreign experts in sub project: (Foreign expert - tbc)</p>
11.30 – 12.30	<p>SECTION 1 “Capacity Building Program” Chair: I. Ažman</p> <ul style="list-style-type: none"> - <i>Conceptual framework</i> - <i>Organizational altitude, community dialogs</i> - <i>Vision and strategy</i> - <i>Skills and resources, outcome</i> <p><i>(discussions within group)</i></p>
12.30 – 13.00	Break
13.30 – 14.00	<p>SECTION 2 “Action and activity plan for capacity building program implementation” Chair: T.Petek</p> <ul style="list-style-type: none"> - <i>Priority tasks</i> - <i>Geo-portals and metadata</i> - <i>Network services</i> - <i>Interoperability and Stakeholders engagement</i> <p><i>(discussions within group)</i></p>

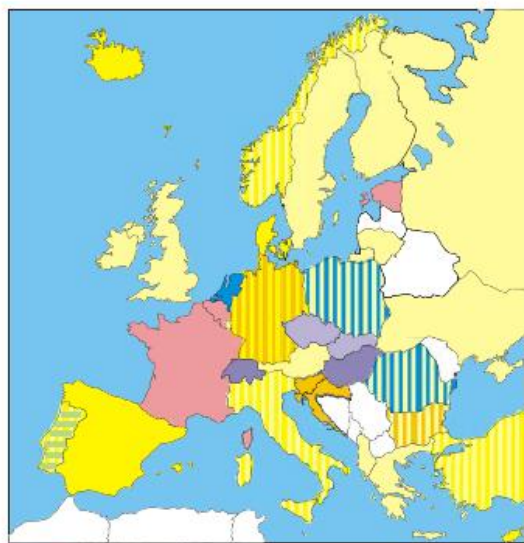
EVROPEAN SDI



POSODOBITEV
PROSTORSKE
PODATKOVNE
INFRASTRUKTURE
ZA ZMANJSANJE
TVEGANJ IN
POSLEDIC POPLAV

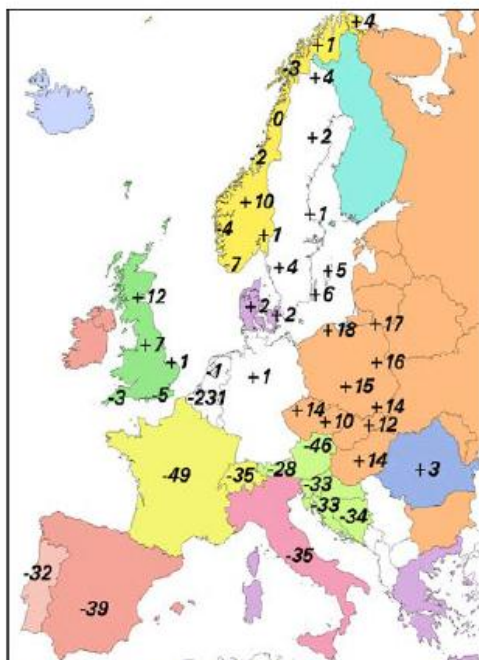


- Različne podatkovne zbirke
- Različni referenčni sistemi
- Različne ravni podrobnosti
- Različni načini zajemanja
- Različni šifranti in kodiranja
- Različni modeli



- Lambert Conformal Conic
- Oblique Conformal Conic
- Oblique Conformal Cylindric
- Oblique Stereographic
- Transverse Mercator
- Transverse Mercator (Gauss-Krüger-System)
- Transverse Mercator (UTM)
- Bonne

Various
Map
projections



Different sea levels



Different Languages

Surveying and Mapping Authority of the Republic of Slovenia



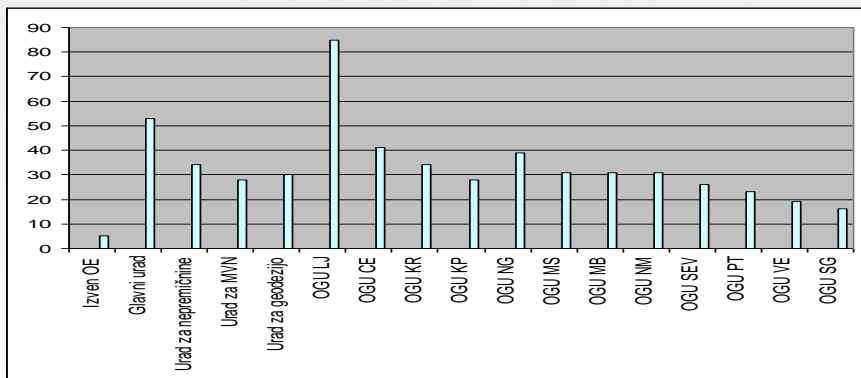
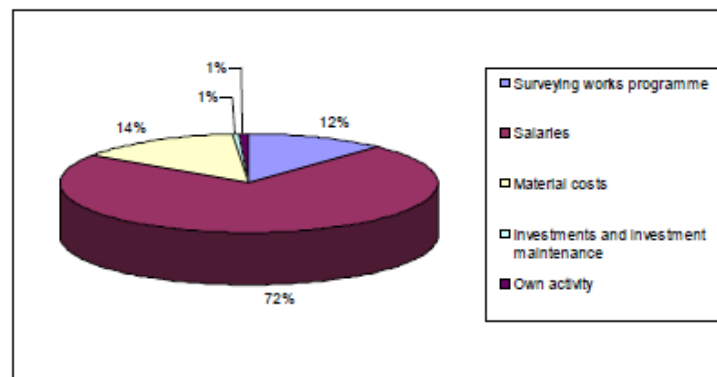
POSODOBITEV
PROSTORSKE
PODATKOVNE
INFRASTRUKTURE
ZA ZMANJSANJE
TVEGANJ IN
POSLEDIC POPLAV



Staff structure by field of expertise in 2012	
Surveyors	252
Agronomists	10
IT specialists	16
Lawyers, financial and administrative staff	215
Total	493

	2007	2008	2009	2010	2011	2012
Surveying works programme	12,158,409	2,662,839	3,488,762	3,870,418	2,363,387	2,235,824
Wages	12,915,929	13,551,555	14,137,920	14,098,625	13,976,793	13,538,511
Material costs	2,714,473	3,072,550	3,004,407	2,753,562	2,697,185	2,602,459
Investments and investment maintenance	495,624	437,209	161,390	109,496	101,145	108,782
Own activity	173,759	221,871	110,512	113,558	230,820	167,292
Total	28,458,194	19,946,024	20,902,991	20,945,659	19,369,330	18,652,868

Budget 2012	in EUR
Surveying works programme	2,235,824
Wages	13,538,511
Material costs	2,602,459
Investments and investment maintenance	108,782
Own activity	167,292
Total	18,652,868





PIC PROMETNO-INFORMACIJSKI CENTER ZA DRŽAVNE CESTE info@promet.si 1970

ENGLISH

Izbor vsebin | Nastavitve prikaza dogodkov | Nastavitve

Iskanje Vsebine

- Prometni dogodki

- LC Sostro - Pance**
- Grosuplje,
občina Ljubljana,
popolna zavora zaradi
podrtega drevja. Čas
vnosa: 02.02.2014
20:52
- Avtocesta**
Ljubljana - Koper
pred razcepom Nanos v
smeri Kopra je zaradi
izrednega dogodka
zaprta do preklica. Čas
vnosa: 03.02.2014
19:00
- R2-409, Brezovica**
- Vrhnika, pri
bencinskem servisu,
popolna zavora zaradi
podrtega drevja. Čas
vnosa: 03.02.2014
18:56
- R3-694, Velenje -**
Polzela, popolna
zavora zaradi podrtega

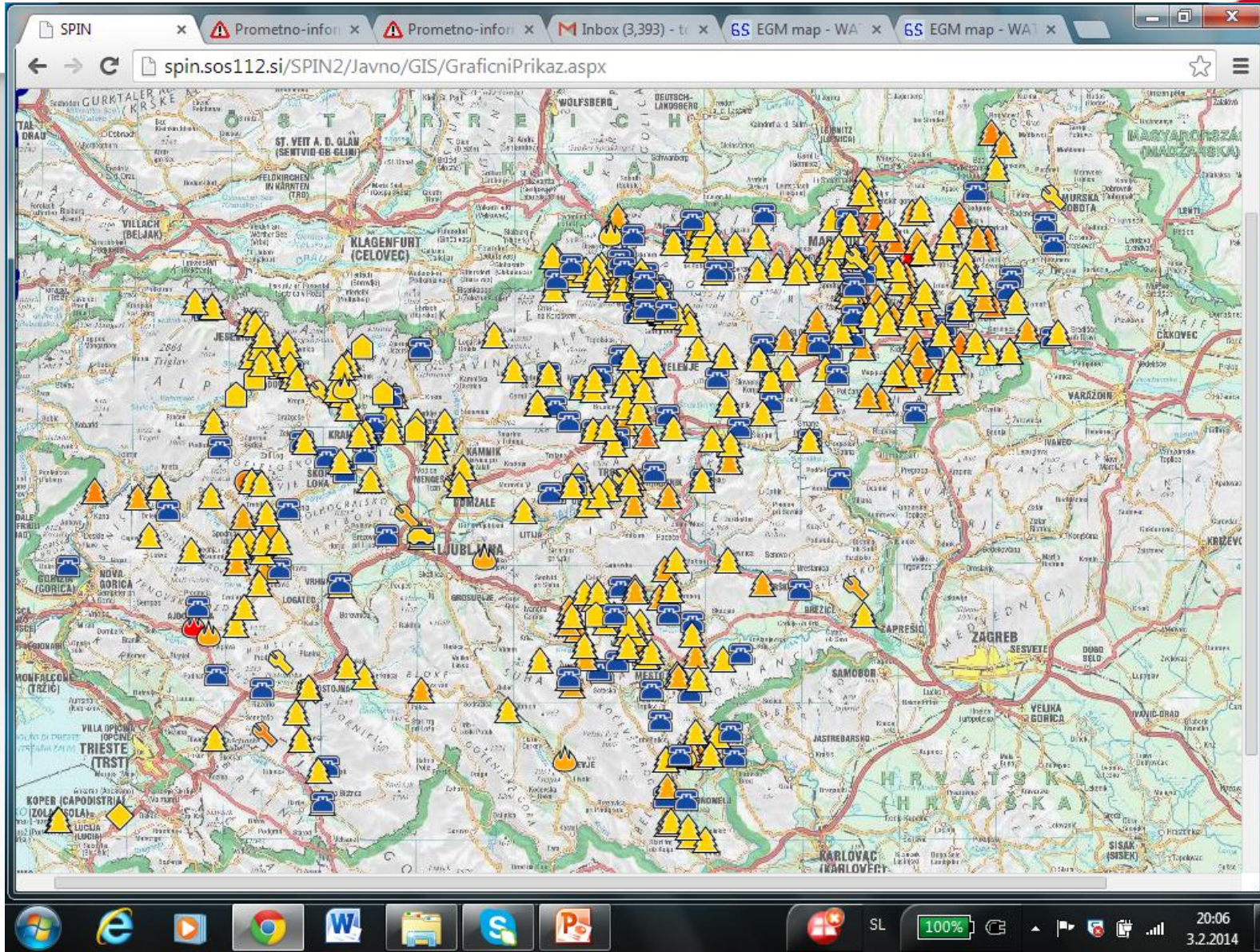
promet.si/portal/map/portal.aspx?lng=EN

Windows taskbar: 19:55 3.2.2014

www.sos112.si



POSODOBITEV
PROSTORSKE
POTAČKOVNE
INFRASTRUKTURE
ZA ZMANJSANJE
TVEGANJ IN
POSLEDIC POPLAV



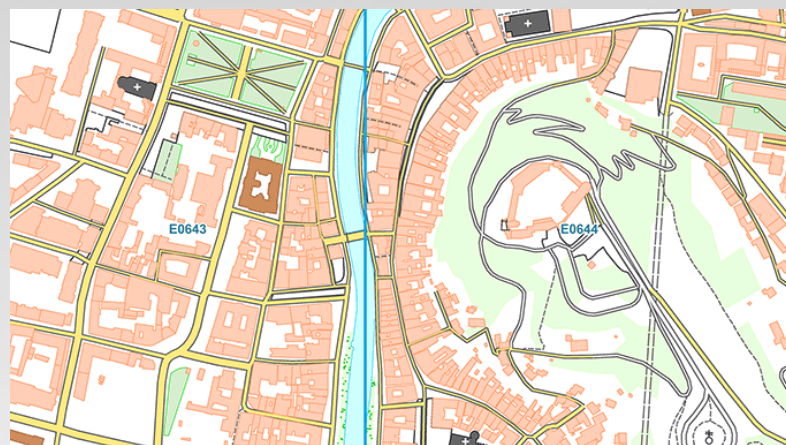
Podprojekt TOPO



POSODOBITEV
PROSTORSKE
PODATKOVNE
INFRASTRUKTURE
ZA ZMANJSANJE
TVEGANJ IN
POSLEDIC POPLAV



- vzpostavljena topografska baza velike natančnosti (merilo 1 : 5000),
- spremenjen obstoječi topografski podatkovni model (DS INSPIRE),
- pretvorba obstoječih podatkov v novi podatkovni model,
- iz stereoparov aerofotografij zajeti topografski podatki za omejeno območje,
- izvedena kontrola kakovosti zajetih podatkov in uvoz teh podatkov v novo bazo,
- razvite metode in procesi za vzdrževanje topografskih podatkov,
- določen bo model kakovosti,
- omrežna storitev za prikaz topografskih podatkov.



NALOGE

V PODPROJEKTU INSPIRE



POSODOBITEV
PROSTORSKE
PODATKOVNE
INFRASTRUKTURE
ZA ZMANJSANJE
TVEGANJ IN
POSLEDIC POPLAV



- Izgradnja zmogljivosti
- Metapodatki
- Distribucijske baze
- Storitve za
 - iskanje,
 - pregledovanje,
 - prenos in
 - transformacijo podatkov
- Dostop do storitev preko evropskega geoportala INSPIRE



Experience from Iceland and Norway



POSODOBITEV
PROSTORSKE
PODATKOVNE
INFRASTRUKTURE
ZA ZMANJSANJE
TVEGANJ IN
POSLEDIC POPLAV



Norveška geodetska uprava **Statens kartverk**

- Tore Haye,
- Magnus Karge

Islandska geodetska uprava **Landmælingar Íslands**

- Eydís Líndal
Finnbogadóttir
- Gunnar Haukur
Kristinsson

Podprojekt INSPIRE

Izgradnja kapacitet



POSODOBITEV
PROSTORSKE
PODATKOVNE
INFRASTRUKTURE
ZA ZMANJŠANJE
TVEGANJ IN
POSLEDIC POPLAV



- program za izgradnjo zmogljivosti,
- navodila za medopravilnost zbirk in storitev,
- posodobljen informacijski sistem za metapodatke na slovenskem geoportalu, dodani opisi za storitve
- v distribucijski sistem vključeni sloji topografskih podatkov,
- omrežne storitve, skladne z INSPIRE uredbo o omrežnih storitvah
- navodila in usmeritve za uskladitev drugih storitev za prostorske podatke z zahtevami INSPIRE.

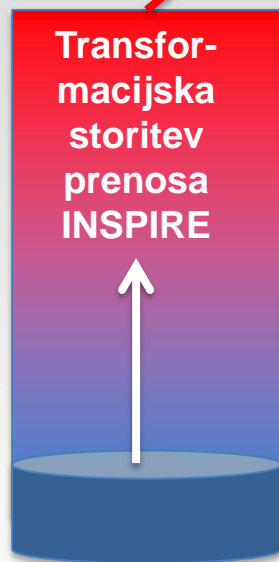
IZVEDBENE MOŽNOSTI ZA STORITVE



POSODOBITEV
PROSTORSKE
PODATKOVNE
INFRASTRUKTURE
ZA ZMANJSANJE
TVEGANJ IN
POSLEDIC POPLAV



Prostorski podatki, skladni z INSPIRE podatkovnimi specifikacijami



(1) „On-the-fly“ transformacija prostorskih podatkov



(2) „Offline“ transformacija prostorskih podatkov



(3) Zunanja transformacija prostorskih podatkov s pomočjo posameznih omrežnih storitev

STRATEGIC GOALS OF SLOVENIAN SDI



POSODOBITEV
PROSTORSKE
PODATKOVNE
INFRASTRUKTURE
ZA ZMANJŠANJE
TVEGANJ IN
POSLEDIC POPLAV



Strategic goals IPI	Description of strategic goal
Coordination of activities IPI	Establishment of coordinating body and functioning of organizational structure, where roles, its tasks and relationships between them are thoroughly determined. This is the key to effective execution of tasks, related to INSPIRE Directive.
Activities of Slovenian geo-portal	Establishment of unified entry point for spatial information and spatial services.
Management and maintenance of metadata system	Creation and maintenance of metadata descriptions for spatial data, described in Annex I, II and III. Creation and maintenance of metadata descriptions for services, related to this data.
Network of spatial data services	Establishment and functioning of network services, based on spatial data.
Exchange and joint use of data	It is necessary to maintain the flow of data between bodies of civil services in Slovenian, European bodies and member states. Therefore we need clear policies on data sharing in Slovenia.
Monitoring and reporting	Providing regular monitoring and reporting in accordance with INSPIRE Directive.

STRATEGIC GOALS OF SLOVENIAN SDI



POSODOBITEV
PROSTORSKE
PODATKOVNE
INFRASTRUKTURE
ZA ZMANJŠANJE
TVEGANJ IN
POSLEDIC POPLAV



Strategic goals IPI	Description of strategic goal
Coordination of activities IPI	Establishment of coordinating body and functioning of organizational structure, where roles, its tasks and relationships between them are thoroughly determined. This is the key to effective execution of tasks, related to INSPIRE Directive.
Activities of Slovenian geo-portal	Establishment of unified entry point for spatial information and spatial services.
Management and maintenance of metadata system	Creation and maintenance of metadata descriptions for spatial data, described in Annex I, II and III. Creation and maintenance of metadata descriptions for services, related to this data.
Network of spatial data services	Establishment and functioning of network services, based on spatial data.
Exchange and joint use of data	It is necessary to maintain the flow of data between bodies of civil services in Slovenian, European bodies and member states. Therefore we need clear policies on data sharing in Slovenia.
Monitoring and reporting	Providing regular monitoring and reporting in accordance with INSPIRE Directive.



POSODOBITEV
PROSTORSKE
PODATKOVNE
INFRASTRUKTURE
ZA ZMANJSANJE
TVEGANJ IN
POSLEDIC POPLAV



First strategic goal: Coordination of IPI

Provide resources	Every manager of the collection must guarantee required resources for smooth functioning of IPI
Administrative support (project office) for NTS	In line with ZIPI ZIPI, tasks of NTS are fulfilled by the Surveying and Mapping Authority of Republic of Slovenia, which can either use its own resources or handle the task to outside contractor.
Technical and applicatorily support	In line with the ZIPI, tasks of NTS are fulfilled by the Surveying and Mapping Authority of Republic of Slovenia, which can handle the task to outside contractor.

STRATEGIC GOALS OF SLOVENIAN SDI



POSODOBITEV
PROSTORSKE
PODATKOVNE
INFRASTRUKTURE
ZA ZMANJSANJE
TVEGANJ IN
POSLEDIC POPLAV




Strategic goals IPI	Description of strategic goal
Coordination of activities IPI	Establishment of coordinating body and functioning of organizational structure, where roles, its tasks and relationships between them are thoroughly determined. This is the key to effective execution of tasks, related to INSPIRE Directive.
Activities of Slovenian geo-portal	Establishment of unified entry point for spatial information and spatial services.
Management and maintenance of metadata system	Creation and maintenance of metadata descriptions for spatial data, described in Annex I, II and III. Creation and maintenance of metadata descriptions for services, related to this data.
Network of spatial data services	Establishment and functioning of network services, based on spatial data.
Exchange and joint use of data	It is necessary to maintain the flow of data between bodies of civil services in Slovenian, European bodies and member states. Therefore we need clear policies on data sharing in Slovenia.
Monitoring and reporting	Providing regular monitoring and reporting in accordance with INSPIRE Directive.



POSODOBITEV
PROSTORSKE
PODATKOVNE
INFRASTRUKTURE
ZA ZMANJŠANJE
TVEGANJ IN
POSLEDIC POPLAV



Second strategic goal: Functioning of Slovenian geo-portal

Informing and training of users and managers of collections	Tasks of informing and training are regular tasks of project group of INSPIRE as well as NTS.
Technical and user support	In line with  the ZIPI, functioning of geo portal is ensured by NTS, which means that those tasks are carried out by Surveying and Mapping Authority of Republic of Slovenia, which can either use it's own resources or handle the task to outside contractor.
Linking with EU Geo Portal	In line with ZIPI, this link is ensured by NTS as well as by any other manager of collections with their own geo portals.

STRATEGIC GOALS OF SLOVENIAN SDI



POSODOBITEV
PROSTORSKE
PODATKOVNE
INFRASTRUKTURE
ZA ZMANJSANJE
TVEGANJ IN
POSLEDIC POPLAV



Strategic goals IPI	Description of strategic goal
Coordination of activities IPI	Establishment of coordinating body and functioning of organizational structure, where roles, its tasks and relationships between them are thoroughly determined. This is the key to effective execution of tasks, related to INSPIRE Directive.
Activities of Slovenian geo-portal	Establishment of unified entry point for spatial information and spatial services
Management and maintenance of metadata system	Creation and maintenance of metadata descriptions for spatial data, described in Annex I, II and III. Creation and maintenance of metadata descriptions for services, related to this data.
Network of spatial data services	Establishment and functioning of network services, based on spatial data.
Exchange and joint use of data	It is necessary to maintain the flow of data between bodies of civil services in Slovenian, European bodies and member states. Therefore we need clear policies on data sharing in Slovenia.
Monitoring and reporting	Providing regular monitoring and reporting in accordance with INSPIRE Directive.



Third strategic goal: Managing and maintenance of metadata system

Education	In line with ZIPI, this task is ensured by NTS and project group of INSPIRE, which means that those tasks are carried out by the Surveying and Mapping Authority of Republic of Slovenia, which can either use it's own resources or handle the task to outside contractor.
Education of users	↔ In line with ZIPI, this task is ensured by NTS and project group of INSPIRE, which means that those tasks are carried out by the Surveying and Mapping Authority of Republic of Slovenia, which can either use it's own resources or handle the task to outside contractor
Creation and fullfilments of metadata in line with the IP (Annex I, II and III)	In line with ZIPI, tis task is ensured by NTS and project group INSPIRE, which means that those tasks are carried out by Surveying and Mapping Authority of Republic of Slovenia, and all other managers of collections.

STRATEGIC GOALS OF SLOVENIAN SDI



POSODOBITEV
PROSTORSKE
PODATKOVNE
INFRASTRUKTURE
ZA ZMANJSANJE
TVEGANJ IN
POSLEDIC POPLAV



Strategic goals IPI	Description of strategic goal
Coordination of activities IPI	Establishment of coordinating body and functioning of organizational structure, where roles, its tasks and relationships between them are thoroughly determined. This is the key to effective execution of tasks, related to INSPIRE Directive.
Activities of Slovenian geo-portal	Establishment of unified entry point for spatial information and spatial services.
Management and maintenance of metadata system	Creation and maintenance of metadata descriptions for spatial data, described in Annex I, II and III. Creation and maintenance of metadata descriptions for services, related to this data.
Network of spatial data services	Establishment and functioning of network services, based on spatial data.
Exchange and joint use of data	It is necessary to maintain the flow of data between bodies of civil services in Slovenian, European bodies and member states. Therefore we need clear policies on data sharing in Slovenia.
Monitoring and reporting	Providing regular monitoring and reporting in accordance with INSPIRE Directive.



POSODOBITEV
PROSTORSKE
PODATKOVNE
INFRASTRUKTURE
ZA ZMANJSANJE
TVEGANJ IN
POSLEDIC POPLAV



Integration of metadata descriptions in geo-portal

Watching over and fulfillment of sources and managers of data	In line with ZIPI, this task is ensured by NTS and project group INSPIRE, which means that those tasks are carried out by Surveying and Mapping Authority of Republic of Slovenia, and all other managers of collections.
Linking of the portals and services with EU portal	In line with ZIPI, this task is ensured by NTS and project group INSPIRE, which means that those tasks are carried out by Surveying and Mapping Authority of Republic of Slovenia, and all other managers of collections.
Preparation of agreements between participants in network	In line with ZIPI, this task is ensured by NTS and project group INSPIRE. These agreements will be available to users in every possible area.
Agreements between participants	In line with ZIPI, this task is ensured by NTS and project group INSPIRE. These agreements will be available to users in every possible area.

STRATEGIC GOALS OF SLOVENIAN SDI



POSODOBITEV
PROSTORSKE
PODATKOVNE
INFRASTRUKTURE
ZA ZMANJŠANJE
TVEGANJ IN
POSLEDIC POPLAV




Strategic goals IPI	Description of strategic goal
Coordination of activities IPI	Establishment of coordinating body and functioning of organizational structure, where roles, its tasks and relationships between them are thoroughly determined. This is the key to effective execution of tasks, related to INSPIRE Directive.
Activities of Slovenian geo-portal	Establishment of unified entry point for spatial information and spatial services.
Management and maintenance of metadata system	Creation and maintenance of metadata descriptions for spatial data, described in Annex I, II and III. Creation and maintenance of metadata descriptions for services, related to this data.
Network of spatial data services	Establishment and functioning of network services, based on spatial data.
Exchange and joint use of data	It is necessary to maintain the flow of data between bodies of civil services in Slovenian, European bodies and member states. Therefore we need clear policies on data sharing in Slovenia
Monitoring and reporting	Providing regular monitoring and reporting in accordance with INSPIRE Directive.



POSODOBITEV
PROSTORSKE
PODATKOVNE
INFRASTRUKTURE
ZA ZMANJSANJE
TVEGANJ IN
POSLEDIC POPLAV



Fifth strategic goal: Exchange and joint use of data

Watching over current price policy and rules for access to data	In line with ZIPI, this task is ensured by NTS and project group INSPIRE.
Preparation of recommendations to unify access to data on base of IP	In line with ZIPI, this task is ensured by NTS and project group INSPIRE. 
Acceptance of IP for access and rules of use of data in civil service	In line with ZIPI, this task is ensured by NTS and project group INSPIRE.
Establishment of network services	In line with ZIPI, this task is ensured by NTS and project group INSPIRE, for performances of network services are responsible all managers of collections, which are written in record of collections.
Performance of network services	In line with ZIPI, this task is ensured by NTS and project group INSPIRE, for performances of network services are responsible all managers of collections, which are written in record of collections.

STRATEGIC GOALS OF SLOVENIAN SDI



POSODOBITEV
PROSTORSKE
PODATKOVNE
INFRASTRUKTURE
ZA ZMANJSANJE
TVEGANJ IN
POSLEDIC POPLAV



Strategic goals IPI	Description of strategic goal
Coordination of activities IPI	Establishment of coordinating body and functioning of organizational structure, where roles, its tasks and relationships between them are thoroughly determined. This is the key to effective execution of tasks, related to INSPIRE Directive.
Activities of Slovenian geo-portal	Establishment of unified entry point for spatial information and spatial services.
Management and maintenance of metadata system	Creation and maintenance of metadata descriptions for spatial data, described in Annex I, II and III. Creation and maintenance of metadata descriptions for services, related to this data.
Network of spatial data services	Establishment and functioning of network services, based on spatial data.
Exchange and joint use of data	It is necessary to maintain the flow of data between bodies of civil services in Slovenian, European bodies and member states. Therefore we need clear policies on data sharing in Slovenia.
Monitoring and reporting	Providing regular monitoring and reporting in accordance with INSPIRE Directive.



POSODOBITEV
PROSTORSKE
PODATKOVNE
INFRASTRUKTURE
ZA ZMANJSANJE
TVEGANJ IN
POSLEDIC POPLAV



Sixth strategic goal: Watching over and reporting

<p>Preparation of report every 3 years</p>	<p>In line with ZIPI, tis task is ensured by NTS and project group INSPIRE, which means that those tasks are carried out by Surveying and Mapping Authority of Republic of Slovenia, and all other managers of collections.</p>
<p>Execution of annual watch - over</p>	<p>In line with ZIPI, tis task is ensured by NTS and project group INSPIRE, which means that those tasks are carried out by Surveying and Mapping Authority of Republic of Slovenia, and all other managers of collections.</p>



POSODOBITEV
PROSTORSKE
PODATKOVNE
INFRASTRUKTURE
ZA ZMANJŠANJE
TVEGANJ IN
POSLEDIC POPLAV



SPIN x Prometno-informacij x Inbox (3,393) - tomazi x GS EGM map - WATER n x Atlas okolja x

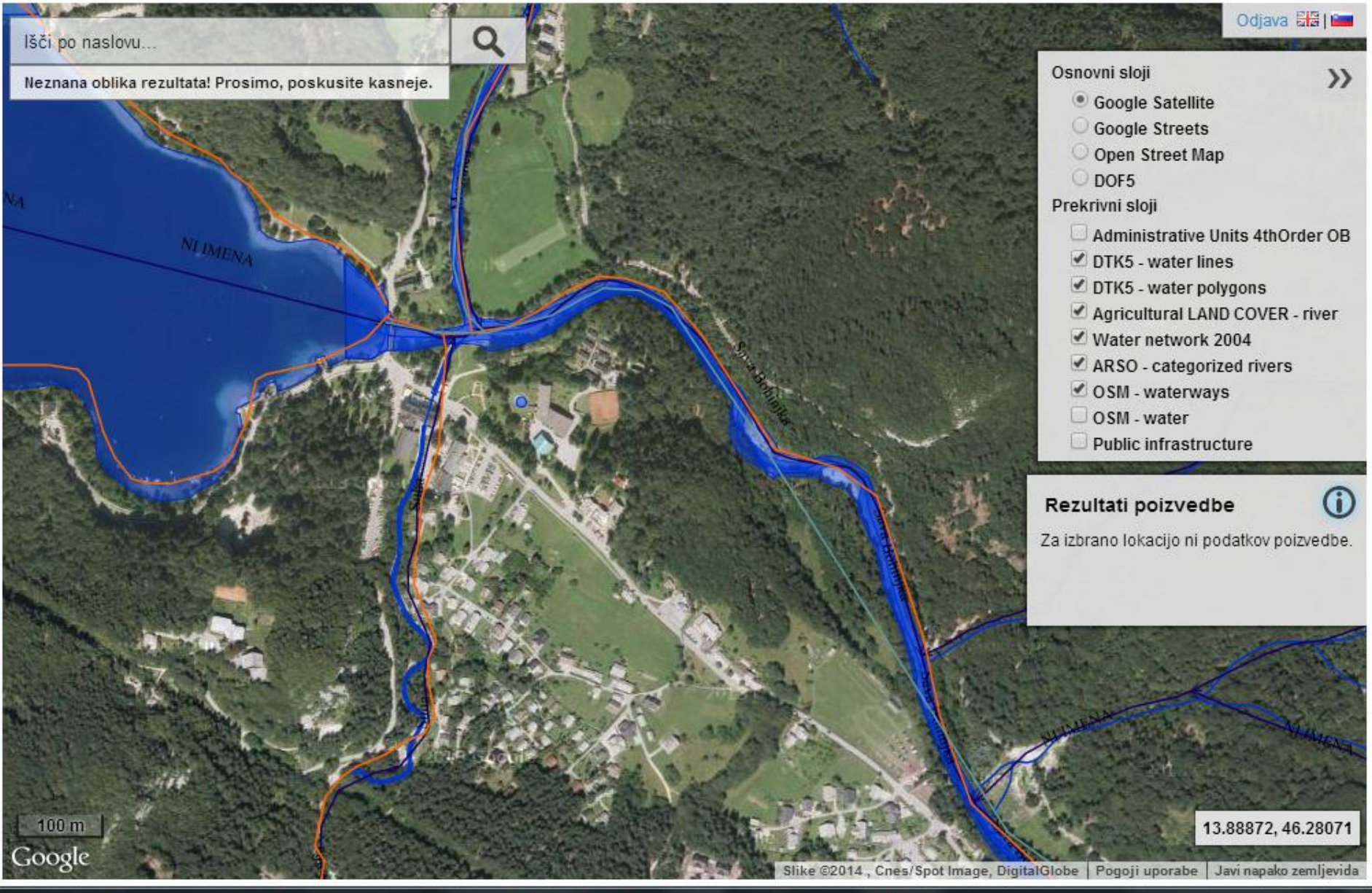
gis.arso.gov.si/atlasokolja/profile.aspx?id=Atlas_Okolja_AXL@Arso

AGENCIJA RS ZA OKOLJE | ATLAS OKOLJA

Podlage ▾

30km

20:50
3.2.2014



DISCUSSION



POSODOBITEV
PROSTORSKE
PODATKOVNE
INFRASTRUKTURE
ZA ZMANJŠANJE
TVEGANJ IN
POSLEDIC POPLAV





POSODOBITEV
PROSTORSKE
PODATKOVNE
INFRASTRUKTURE
ZA ZMANJŠANJE
TVEGANJ IN
POSLEDIC POPLAV



Hvala lepa za pozornost!

**Tusen takk for
oppmerksomheten!**

**Pakka þér kærlega fyrir
athyglina!**