

[2022]

OE

TAIWAN **KT**

We extend to all our clients, old and new, our warmest thanks and best wishes on the occasion of our 74TH anniversary. The new catalog clearly demonstrates how far the industry has changed over the years and how Kun Teng have been in the vanguard of research and development.

Established in 1947, Kun Teng today is Taiwan's largest hub and coaster-brake manufacturer, with an "A-Class" Quality Control rating from the government and an increasing reputation worldwide for reliability. Our factory at Taya, near Taichung, operates up-to-date Sakamura BPF-580KT cold-forging machines, automatic lathes and conveyers, high-speed, precision, multipurpose punching machines, CNC lathes and threading machines, and electroplating equipment.

Our R&D work continues to concentrate on the improved function of our cassette hubs. Our coaster-brakes meet American Consumer Foundation standard requirement (CPSC,USA), test-approved by (DIN) in November 1996, and we are already approved the ISO-9001 certificate.. We hope, through sustained efforts, to promote our product range in both the OEM and dealer markets, while expanding our range of services.





E-BIKE & BOOST P04

E-BIKE & MTB P05

BOOST P06

MTB P07

ROAD DISC P08

ROAD P09

TECHNOLOGIES P10

THROUGH AXLE DYNAMO HUB P11

DYNAMO HUB SYSTEM P12

COASTER BRAKE P13

ONE PIECE WHEEL P14

INTER-3 GEAR HUB P15

MICRO SPLINE 12SP 3X1



Spline (For E-Bike)

High torque Spline press-fit ratchet ring for E-bike.





Front ID Ø15 x 110mm / Rear ID Ø12 x 148mm



QL-S39F



WEIGHT: 184g

Option: Center Lock: **QL-S3DF**

Axle Material: **AL7075**

Sealed Cartridge Bearings (SB): **2pcs**



QL-2H2SR 12SP



WEIGHT: 393g

Axle Material: **Cr-Mo**

Freehub Body: **Cr-Mo 3 pawls x 1 spring w/Shimano 11sp, MS 12sp or Sram XD cassette**

Sealed Bearings (SB): **4pcs**

Recommended for E-Cargo bike

OPTIONS

CL	QL-2H3MR	IS6	QL-2H2MR	Shimano 11SP
CL	QL-2H3XR	IS6	QL-2H2XR	Sram XD
CL	QL-2H3SR	IS6	QL-2H2SR	MS 12SP



Front ID Ø15 x 100mm / Rear ID Ø12 x 142mm



QL-S3EF

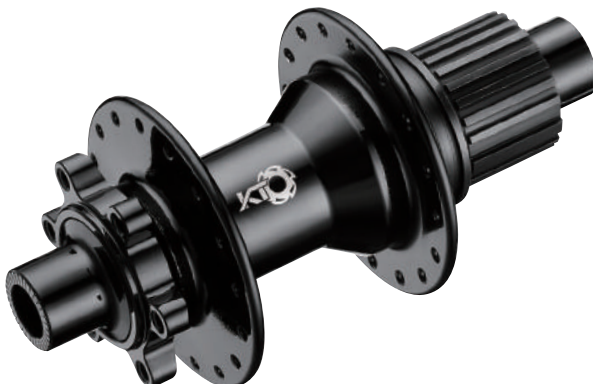


WEIGHT: 182g

Option: Center Lock: **QL-SLWF**

Axle Material: **AL7075**

Sealed Bearings (SB): **2pcs**



QL-2H1SR 12SP



WEIGHT: 387g

Axle Material: **Cr-Mo**

Freehub Body: **Cr-Mo 3 pawls x 1 spring w/Shimano 11sp, MS 12sp or Sram XD cassette**

Sealed Bearings (SB): **4pcs**

Recommended for E-Cargo bike

OPTIONS

CL	QL-2HCMR	IS6	QL-2H1MR	Shimano 11SP
CL	QL-2HCXR	IS6	QL-2H1XR	Sram XD
CL	QL-2HCSR	IS6	QL-2H1SR	MS 12SP



Front ID Ø15 x 110mm / Rear ID Ø12 x 148mm



QL-S39F



WEIGHT: 184g

Option: Center Lock: **QL-S3DF**

Axle Material: **AL7075**

Sealed Cartridge Bearings (SB): **2pcs**



QL-4K9XR 11SP



WEIGHT: 293g

Axle Material: **AL7075**

Freehub Body: **AL7075 4 pawls x 4 springs w/Shimano 11sp, MS 12sp or Sram XD cassette**

Sealed Bearings (SB): **4pcs**

OPTIONS

CL	QL-4H9MR	IS6	QL-4K9MR	Shimano 11SP
CL	QL-4H9XR	IS6	QL-4K9XR	Sram XD
CL	QL-4H9SR	IS6	QL-4K9SR	MS 12SP



Front ID Ø15 x 100mm / Rear ID Ø12 x 142mm



QL-S3EF



WEIGHT: 182g

Option: Center Lock: **QL-SLWF**

Axle Material: **AL7075**

Sealed Bearings (SB): 2pcs



QL-4KZXR 11SP



WEIGHT: 288g

Axle Material: **AL7075**

Freehub Body: **AL7075 4 pawls x 4 springs w/Shimano 11sp, MS 12sp or Sram XD cassette**

Sealed Bearings (SB): 4pcs

OPTIONS

CL	QL-4HZMR	IS6	QL-4KZMR	Shimano 11SP
CL	QL-4HZXR	IS6	QL-4KZXR	Sram XD
CL	QL-4HZSR	IS6	QL-4KZSR	MS 12SP



Front ID Ø12 x 100mm / Rear ID Ø12 x 142mm



QL-SLXF



WEIGHT: 148g
Option: IS6 Same Flange: **QL-S3GF**
Axle Material: **AL7075**
Sealed Bearings (SB): **2pcs**



QL-4VBMR 11SP



WEIGHT: 268g
Axle Material: **AL7075**
Freehub Body: **AL7075 4 pawls x 4 springs w/ Shimano 11sp, Sram XDR, or Campy cassette**
Sealed Cartridge Bearings (SB): **4pcs**

OPTIONS

CL	QL-4VBMR	IS6	QL-4VDMR	Shimano 11SP
CL	QL-4VBDR	IS6	QL-4VDDR	Sram XDR
CL	QL-4VBCR	IS6	QL-4VDCR	Campy
CL	QL-4VBYSR	IS6	QL-4VDYSR	Campy N3W

Front ID Ø5 x 100 x 108mm / Rear ID Ø5 x 130 x 140mm



QL-2VDF



WEIGHT: 74g

Axle Material: **AL7075**

Sealed Cartridge Bearings (SB): **2pcs**



QL-4V7MR 11SP



WEIGHT: 248g

Axle Material: **AL7075**

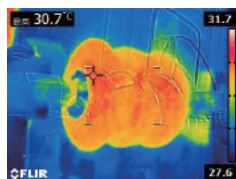
Freehub Body: **AL7075 4 pawls x 4 springs w/ Shimano 11sp, Sram XDR, or Campy cassette**

Sealed Cartridge Bearings (SB): **4pcs**

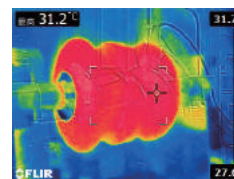
OPTIONS

QL-4V7MR	Shimano 11SP
QL-4V7DR	Sram XDR
QL-4V7CR	Campy

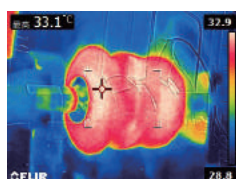
The internal of dynamo hub contains a high and powerful neodymium magnet. When this magnet encounters the heat element, it will cause a demagnetization effect. Therefore, the temperature will have an impact on the dynamo hub. 5Km/h, 15km/h, 25km/h, 35km/h, 45km/h are the measurements of temperature after a journey of 100 km.



5KM/HR- RIDING 100KM



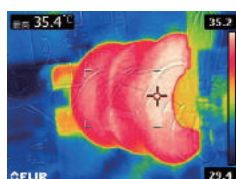
15KM/HR- RIDING 100KM



45KM/HR- RIDING 100KM



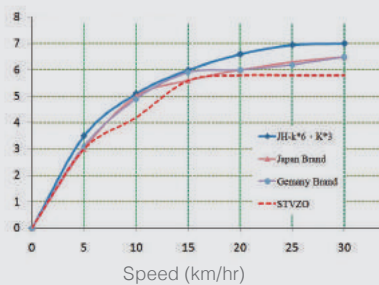
35KM/HR- RIDING 100KM



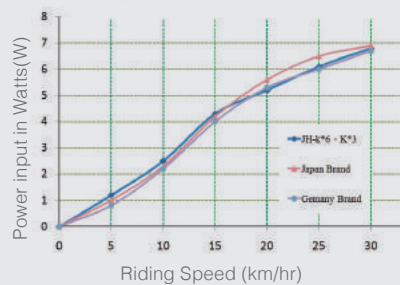
25KM/HR- RIDING 100KM

POWER TEST

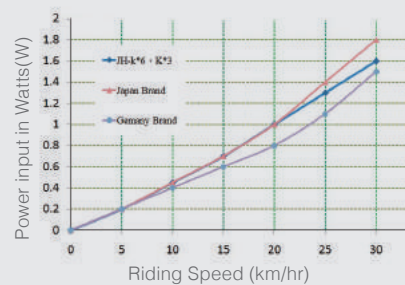
WHEEL STVZO VOLTAGE OUTPUT TEST



LIGHT SWITCHED ON



LIGHTS SWITCHED OFF





JH-KD7F



WEIGHT: 416g

Brake type: **Disc Brake**

Axle Type: **12mm only**

Spoke Holes: **28H / 32H / 36H**

Sealed Cartridge Bearing (SB): **2pcs**

Option: **CL: JH-KC7F**



JH-KD5F



WEIGHT: 453g

Brake type: **Disc Brake**

Axle Type: **QR 15 / 12 / 5.2mm (one hub can be compatible with 3 different end cap)**

Flange Diameter: **66mm**

Spoke P.C.D: **58mm**

Spoke Holes: **28H / 32H / 36H**

O.L.D: **100mm; 110mm for Boost (JH-KD1F)**

Sealed Cartridge Bearing (SB): **2pcs**

Option: **CL: JH-KC5F**

Boost 4in1



AC-6V3W



K 1280



EASY REPAIR



JH-K7DF

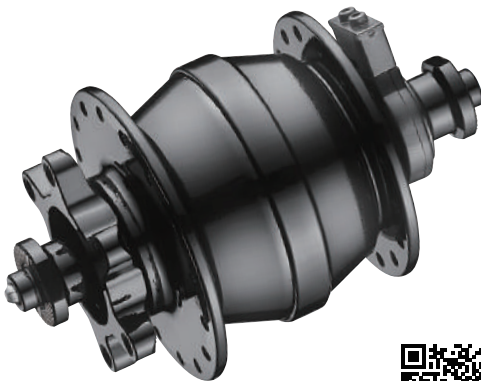
WEIGHT: 510g

Brake type: **Disc Brake**

Axle Type: **12mm only**

Option: **CL: JH-K7CF**

**EASY
REPAIR**



JH-KD6F

WEIGHT: 415g

Brake Type: **Disc Brake**

Axle Type: **QR**

Flange Diameter: **66mm (Disc side) & 60mm**

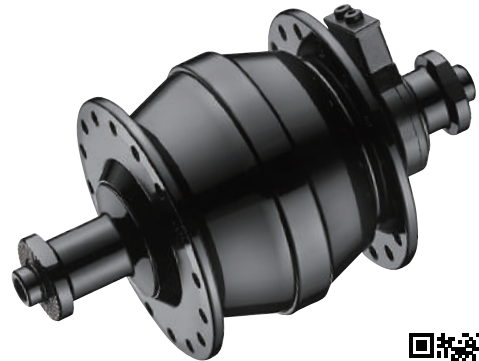
Spoke P.C.D: **58mm (Disc side) & 52mm**

Spoke Holes: **32H / 36H**

O.L.D: **100mm**

Sealed Cartridge Bearing(SB): **2pcs**

Option: **CL: JH-KC6F**



JH-KV6F

WEIGHT: 395g

Brake Type: **V-Brake**

Axle Type: **QR**

Flange Diameter: **60mm**

Spoke P.C.D: **52mm**

Spoke Holes: **32H / 36H**

O.L.D: **100mm ; 74mm (JH-V74F)**

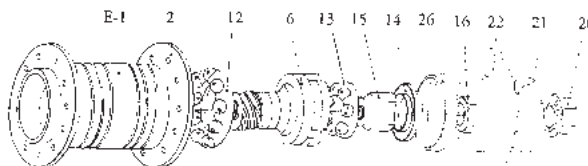
Sealed Cartridge Bearing(SB): **2pcs**



TEST APPROVED BY CHC, STANDARD BSEN14764,
CONTRACT NO.11060303B

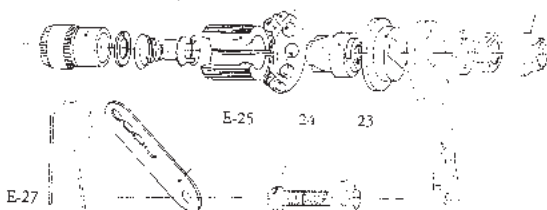
All complete with sprocket(E-22) & associated parts(E-20, 21, 23, 24, 25, 26), additional accessory will be upcharge
Axle length options: 3/8"x24Tx110x150, 155, 163, 170, 175.
Sprocket teeth options: same price for choosing 14T, 16T, 18T, 19T, if 20T, 22T will be upcharge.

PART NO.	DESCRIPTION
E-1	Shell
E-2	Flange
E-3	Axle
E-4	Brake cone
E-5	Dust cap
E-6	Driver
E-7	Brake shoe
E-8	Spring holder
E-9	Clutch spring
E-10	Clutch washer
E-11	Clutch cone
E-12	Ball retainer 7/32" x 9 pcs
E-13	Ball retainer 1/4" x 7 pcs
E-14	Cone cover
E-15	Cone
E-16	Lock nut (a) 17x9mm
E-17	Lock nut (b) 17x7mm
E-18	Washer
E-19	Brake arm
E-20	Flange nut 3/8" x 24t
E-21	Lock ring
E-22	Sprocket 14t, 16t, 18t, 19t, 20t, 22t
E-23	Clip nut
E-24	Clip screw
E-25	Arm clip
E-26	Dust cap
E-27	Bend arm clip



E-3

E-11 10 9 8 7 12 4 5 19 18 17 20



E-25 24 23



cap nuts

17 X 6 hex nut

19 X 3 washer

CONVERTER KIT

Alloy one piece cold
forged hub shell



QL-3A9R



WEIGHT: 925g (7 accessories)

Flange PCD: 69mm

Flange distance: 59mm



QL-307R-T



WEIGHT: 798g

Flange PCD: 48.5mm

Flange distance: 47.4mm

SPECIALLY MADE FOR EASY ASSEMBLING.



ONE-PIECE WHEEL Bike-sharing & Rental bikes

KT's patented One-Piece Wheel, features a revolutionary innovation in hub technology. Working with KT's Inter-Gear 3-Speed Hub or Dynamo Hub, installation is seamless, tool-free and takes just moments to ensure a connection that is 10 times stronger than ever before. Insert the hub into the wheel, then fasten the lock ring to ensure a secure fit.



Inter gear 3 speed

FR-H33R

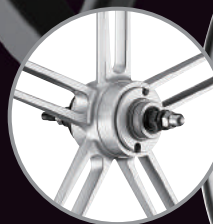
Weight: 880g



Dynamo Hub

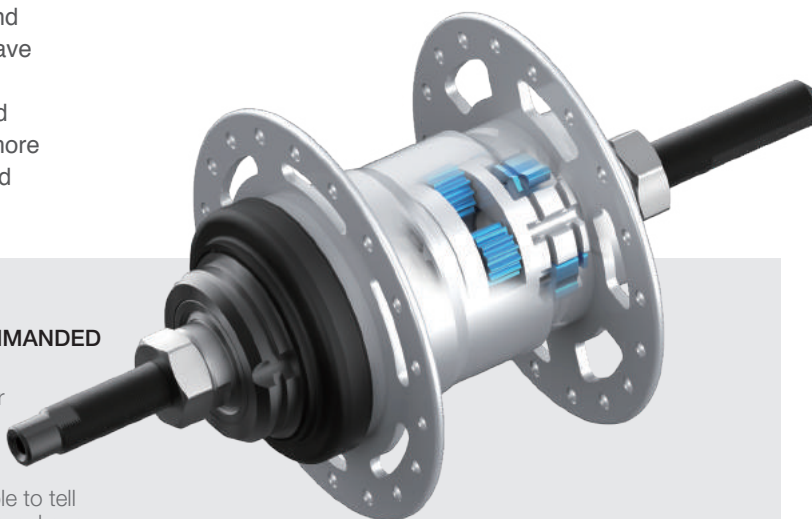
JH-H33F

Weight: 598g



Wheel

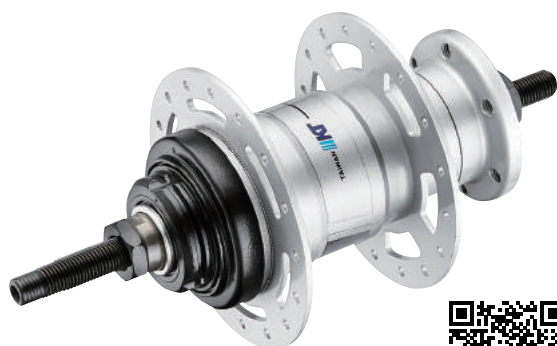
The proliferation of bicycle commuters and the associated bike-sharing programs, have resulted in an upturn in demand for the various components specifically designed for the commuter bicycle market. None more so than high quality, performance-focused internal-gear hub systems.



CAUTION!!

INTERNAL GEARED HUB IS NOT RECOMMENDED FOR E-BIKE WITH MID-DRIVE MOTOR

The maximum torque that applies on the rear sprocket depends on your selection of the gear ratio and the torque from the mid-drive motor. Due to all possible combination, KT is not able to tell if certain mid-drive motors can fit with KT internal gear hub.



FR-H13R

Brake Type: **Disc-Brake**

Weight: **1050g**

O.L.D: **135mm**



FR-H23R

Brake Type: **Drum-Brake / V-Brake**

Weight: **940g**

O.L.D: **120mm**

PARTS

PARTS

Flange nut, Cap nut, Safety washer, Lock-ring, Push rod
UPCHARGE FOR Cr-Mo SPROCKET, available for 16T, 18T, 20T



SHIFTER

MicroSHIFT SHIFTER SET



BRAKE

APSE DRUM-BRAKE SET

