



INDIAN CREEK DRIVE LANDSCAPE PROJECT

PREPARED FOR:

MIAMI BEACH

CONCEPTUAL DESIGN PRESENTATION

08.30.2019

PREPARED BY:





ATLANTIC OCEAN

BAYSHORE COMMUNITY

LAKE PANCOAST

26TH STREET

COLLINS AVENUE

30TH STREET

35TH STREET

INDIAN CREEK

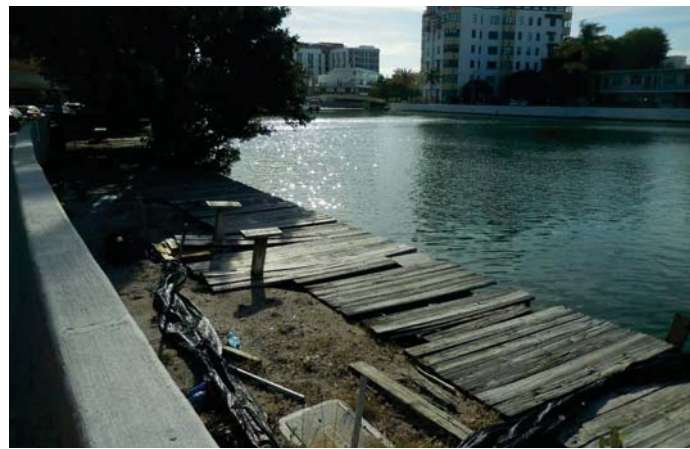
INDIAN CREEK DRIVE

COLLINS AVENUE

W 41ST STREET

PROJECT LIMITS





ANALYSIS LEGEND:

- NODE, SIGNIFICANT DESIGN ANCHOR OPPORTUNITIES
- INDICATES LIGHT POLLUTION AT INTERSECTIONS
- VIEW POINTS, PRIMARILY NORTH AND SOUTH
- REQUIRED BUS STOP LOCATIONS
- VIABLE ROOM FOR PATH AND GREEN SPACE
- VEHICULAR CIRCULATION

OPPORTUNITY FOR 'PLAZA' OR URBAN STREETSCAPE WITH OVERLOOK TO LAKE PANCOAST - 26TH STREET

NEWER VEGETATION BETWEEN 25TH & 26TH STREET. POOR MAINTENANCE, CONSIDER RE-USE OF COCONUTS



OPPORTUNITY FOR MANGROVE PLANTER & TRANSITION - 25TH STREET CITY PROJECT

VIABLE ROOM FOR PATH & NEW PLANTING GENERAL CONDITION 33RD TO 26TH STREET

CONSIDER STRENGTHENING PEDESTRIAN BEACH CONNECTION FROM INDIAN CREEK

CONSIDER STRENGTHENING PEDESTRIAN BEACH CONNECTION FROM 41ST STREET BRIDGE

LIMITED ROOM BETWEEN NEW SEAWALL & ROADWAY, TYPICAL FROM 39TH TO 33RD STREET

NORTHERN NODE VIEWPOINT TO 41ST BRIDGE. OPPORTUNITY FOR 'PLAZA' OR URBAN WATERFRONT PARK

EXISTING CONDITIONS ANALYSIS



ADEQUATE ROOM FOR PATH & NEW PLANTING GENERAL CONDITION 33RD TO 26TH STREET



LARGE UTILITIES AT GRADE AT 32ND STREET



LIMITED ROOM BETWEEN NEW SEAWALL & ROADWAY, TYPICAL FROM 39TH TO 33RD STREET



VIEWPOINT TO 41ST BRIDGE. OPPORTUNITY FOR 'PLAZA' OR URBAN WATERFRONT PARK

PRIMARY PROJECT GOAL:

THE INDIAN CREEK DRIVE LANDSCAPE MASTERPLAN WILL IMPROVE THE LANDSCAPE AESTHETICS AND PEDESTRIAN EXPERIENCE ALONG THE INDIAN CREEK WATERWAY. THIS PROJECT WILL INCLUDE THE RESTORATION AND ENHANCEMENT OF THE LANDSCAPE BUFFER WITH THE INTRODUCTION OF DIVERSE TROPICAL FLORIDA-FRIENDLY PLANTS. THIS BEAUTIFICATION PROJECT WILL ALSO PROMOTE THE ECOLOGY OF THE WATERWAY FOR THE BENEFIT OF THE COMMUNITY.

OPPORTUNITIES: +

- OPPORTUNITY FOR ICONIC PUBLIC REALM THAT CAN BE ANCHORED TO THE NORTH AND SOUTH WITH IMPACTFUL PLAZA OR PARK SPACES.
- INDIAN CREEK VIEW OR OVERLOOK OPPORTUNITIES THAT OCCUR FROM THE 41ST STREET BRIDGE, TO THE BRIDGE ITSELF; TO THE NORTH AND SOUTH FROM THE PEDESTRIAN BRIDGE; AND OVERLOOKING LAKE PANCOAST OR FUTURE MANGROVES TO THE SOUTH.
- OPPORTUNITIES TO EDUCATE PUBLIC ABOUT MANGROVES TO THE SOUTH NEAR 25TH STREET & COLLINS AVENUE.
- OPPORTUNITY TO RESTORE AND IMPROVE FLORA AND FAUNA WHICH WHILE IMPROVE THE QUALITY OF LIFE.

ADDITIONAL PROJECT GOALS:

- RESTORE VEGETATION IN AN EFFORT TO BUFFER NOISE, LIGHT POLLUTION AND PRIVACY FOR THE RESIDENTS OF THE FLAMINGO DRIVE NEIGHBORHOOD.
- THE PROPOSED LANDSCAPE DESIGN SHOULD MAXIMIZE VIEWS TO THE CREEK ALONG ITS ENTIRE LENGTH AND CONSIDER CPTED PRINCIPLES FOR PEDESTRIAN SAFETY.

CONSTRAINTS: ■

- LIMITED SPACE BETWEEN THE ROADWAY BARRIER WALL AND SEAWALL AT POINTS NEAR 39TH STREET & 37TH TO 33RD STREETS TO THE SOUTH.
- UTILITIES PREVENT CONTINUOUS PATHWAY
- LIMITED ABILITY TO EXPAND PAVED SURFACE AT INTERSECTIONS FOR VIABLE PEDESTRIAN GATHERING ZONES AND CONNECTIONS EAST & WEST DUE TO VEHICLE BARRIERS.



'MINIMAL' 10'X3' BUS SHELTER



'STANDARD' 20'X6.5' BUS SHELTER

* BUS SHELTERS BY OTHER DESIGN CONSULTANTS FOR MIAMI BEACH



DESIGN THEMES: ART DECO, MANGROVES, WATER

SUMMARY OF INPUT FROM PUBLIC MEETING



RESIDENTS FROM BOTH SIDES OF THE CREEK WANT THE **VEGETATION TO BE RESTORED** TO REPLACE WHAT WAS LOST DUE TO THE SEAWALL CONSTRUCTION. USE **NATIVE** PLANT MATERIAL.

WATER RETENTION COULD BE A GOOD ADDITION.



MOST RESIDENTS DO NOT DESIRE PALMS, SHADE **TREES** ARE PREFERRED.



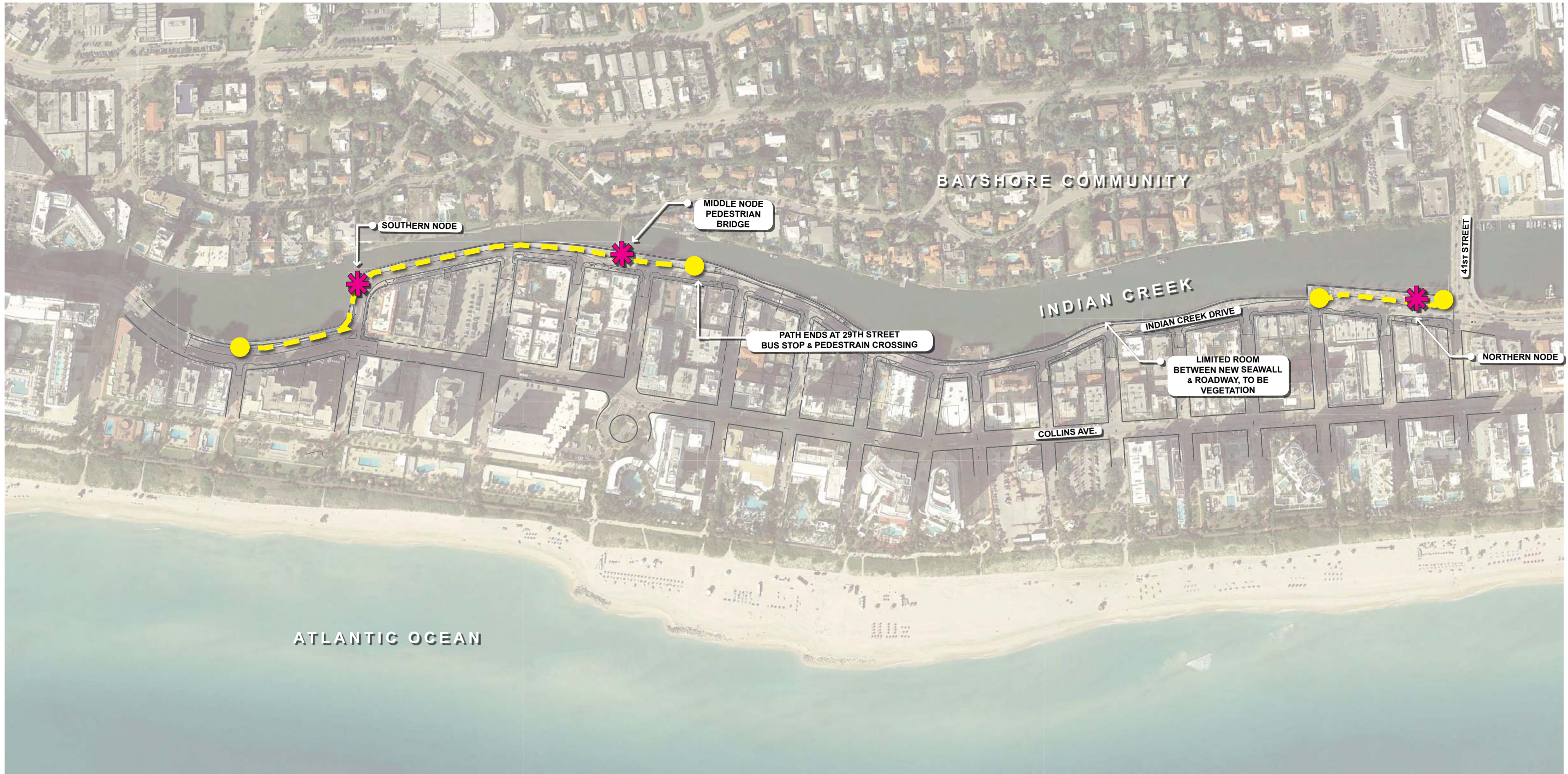
PEOPLE ARE CONCERNED ABOUT THE HOMELESS POPULATION. THE PROPOSED DESIGN SHOULD NOT CREATE A COMFORTABLE ENVIRONMENT. EXCLUDE BENCHES, SHELTERS AND HIDING LOCATIONS.

MANY PEOPLE STATED THEY **DO NOT WANT BENCHES**. CTA TO CONSIDER PEDESTAL (36" SQUARE OR ROUND TO PREVENT SLEEPING) TYPE SEATING INSTEAD IN ONLY FEW AREAS OF HIGH VISIBILITY.



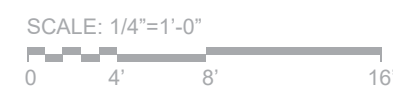
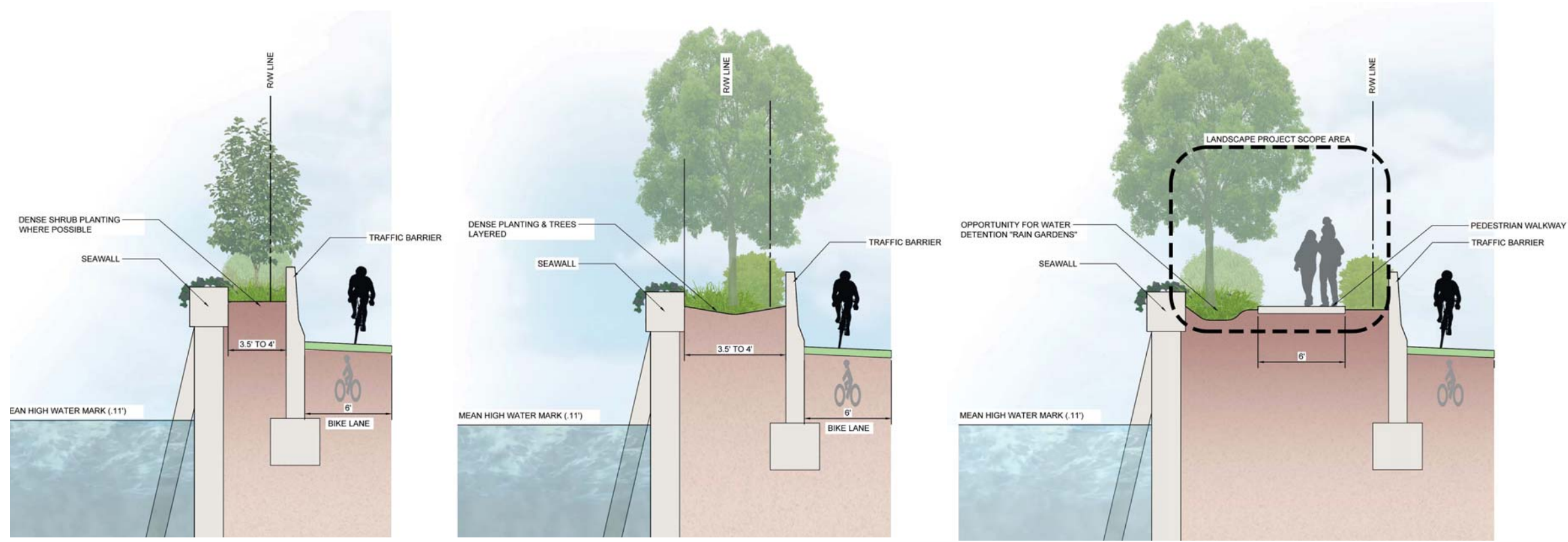
FITNESS EQUIPMENT AT 41ST STREET COULD BE CONSIDERED.

IS THERE SOMETHING TO BE DONE ABOUT THE **JERSEY BARRIER**, POSSIBLY PAINTING IT IF IT HAS TO REMAIN?





KEY MAP - LIMITS OF PATH



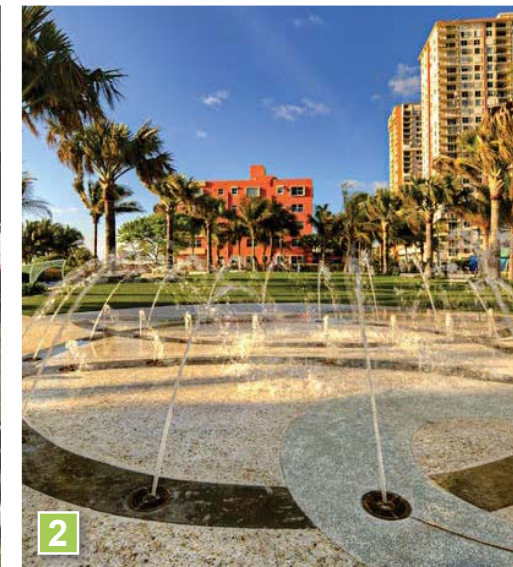
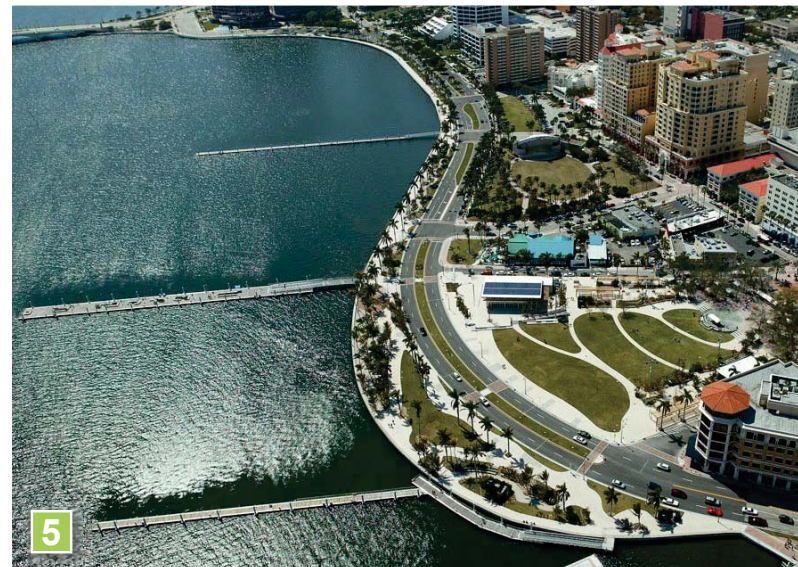
PROJECT SECTIONS

WHERE THE PROJECT AREA IS VERY NARROW, PLANTING IS TO PREVAIL. AS THE WIDTH INCREASES TO 6' OR MORE, TREES CAN BE LAYERED WITH SHRUBS. PLANTING AREAS COULD BE BERMS TO MAKE PLANT HEIGHT MORE DRAMATIC AND EFFECTIVE. PLANTING WOULD BE VARIED WITH TEXTURES AND LAYERS THAT BOTH PROVIDE ADEQUATE BUFFERS AND INTEREST ALONG THE PATH. LARGE TREES & PALMS TO BE INCLUDED IN CLUSTERS. SHADE TREES ARE PREFERRED OVER PALM PLANTINGS. SECTIONS WIDER THAN 12' ALLOW A WALKING PATH TO BE INCLUDED.

NOTE: VEGETATION IS CONCEPTUAL. IDEAL EFFECT WOULD BE TO MAINTAIN PEDESTRIAN VIEWS TO THE CREEK WHILE BUFFERING SOUND, NOISE, AND LIGHT INTO RESIDENCES ON THE WEST SIDE OF THE CREEK.



- 1. CHARLESTON, SOUTH CAROLINA
- 2. POMPANO BEACH, FLORIDA
- 3. SOUTH POINT PARK, MIAMI BEACH
- 4. HIGH LINE, NEW YORK CITY
- 5. WEST PALM BEACH WATERFRONT, FL
- 6. RIVERWALK, FORT LAUDERDALE, FL
- 7. HIGH TRESTLE TRAIL, IOWA
- 8. MIAMI BEACH BEACHWALK



08.30.2019



CLUSIA / PITCH APPLE
Clusia rosea



COCONUT PALMS
Cocos nucifera



DAHOON HOLLY
Ilex cassine



GREEN BUTTONWOOD
Conocarpus erectus



GUMBO LIMBO
Bursera simaruba

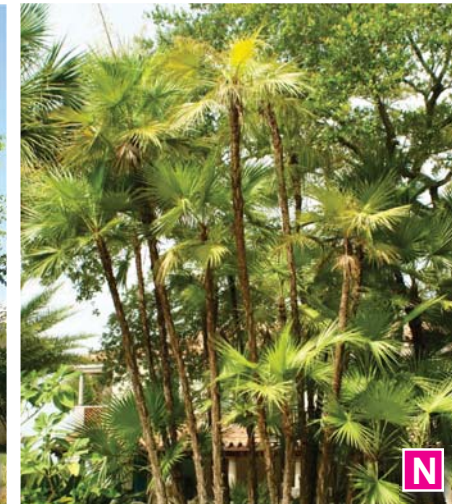


LIVE OAK
Quercus virginiana

N FLORIDA NATIVE



MAHOGANY
Swietenia mahagoni



PAUROTIS PALM
Acoelorrhape wrightii



ROYAL POINCIANA
Delonix regia



SABAL PALMS
Sabal palmetto



ROYAL PALM
Roystonea regia



Silver Buttonwood
Conocarpus erectus var. sericeus



ORANGE GIEGER
Cordia sebestena



SIMPSON STOPPER
Myrcianthes fragrans



SYLVESTER DATE PALM
Phoenix sylvestris



BLACK MANGROVE
Avicennia germinans



WHITE MANGROVE
Laguncularia racemosa



BEACH MORNING GLORY
Ipomoea pes-caprae

COONTIE
Zamia pumila

CARDBOARD PALM
Zamia furfuracea

CLUSIA
Clusia guttifera

CREeping FIG / FIG VINE
Ficus pumila

DUNE SUNFLOWER
Helianthus debilis

DWARF YAUPON HOLLY
Ilex vomitoria



FAKAHATCHEE GRASS
Tripsacum dactyloides

FIREBUSH
Hamelia patens

HORIZONTAL COCOPLUM
Chrysobalanus icaco 'Horizontal'

IXORA
Ixora coccinea

LIRIOPE
Liriope muscari 'Evergreen Giant'

DWARF NATAL PLUM
Carissa macrocarpa 'Emerald Blanket'

PINK MUHLY GRASS
Muhlenbergia capillaris



PITTOSPORUM
Pittosporum spp.

PLUMBAGO
Plumbago auriculata

PODOCARPUS / JAPANESE YEW
Podocarpus macrophyllus

QUEEN EMMA CRINUM
Crinum augustum 'Queen Emma'

RED TIP COCOPLUM
Chrysobalanus icaco 'Red Tip'

SAW PALMETTO
Serenoa repens

SWAMP LILY
Crinum americanum



VARIGATED SHEFFLERA, TRINETTE
Schefflera arboricola 'Trinette'

SILVER BUTTONWOOD
Conocarpus erectus var. sericeus

SILVER SAW PALMETTO
Serenoa repens 'Cinerea'

SPARTINA, SAND CORD GRASS
Spartina spp.

WHITE FOUNTAIN GRASS
Pennisetum setaceum 'Alba'

WILD COFFEE
Psychotria nervosa

GREEN ISLAND FICUS
Ficus microcarpa

08.30.2019

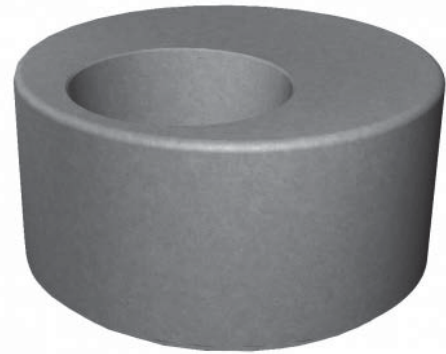


SAWCUT OOLITE BLOCK - NATIVE STONE TO SOUTH FLORIDA & FLORIDA KEYS

SEATING OPTIONS: IN SELECT AREAS ONLY, NOT LARGE ENOUGH TO LAY ON.



PRECAST PEDESTAL 24" -36" ROUND



PRECAST PEDESTAL WITH PLANTER 48" ROUND



PRECAST PEDESTAL 36" SQUARE



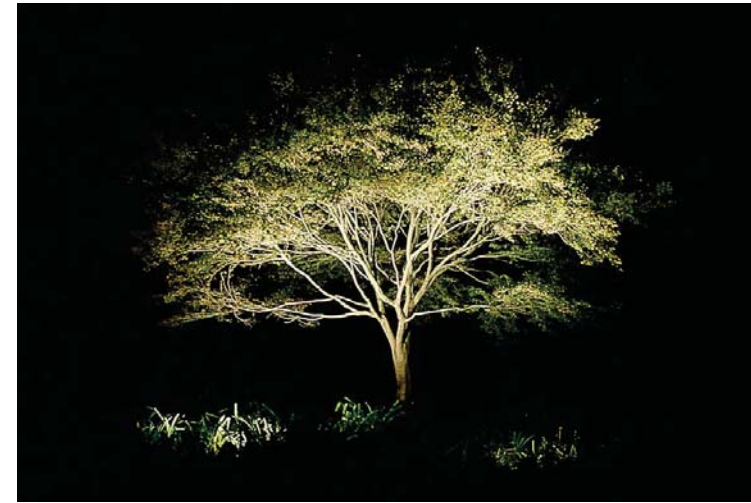
PATHWAY MATERIAL: CRUSHED COQUINA SHELL



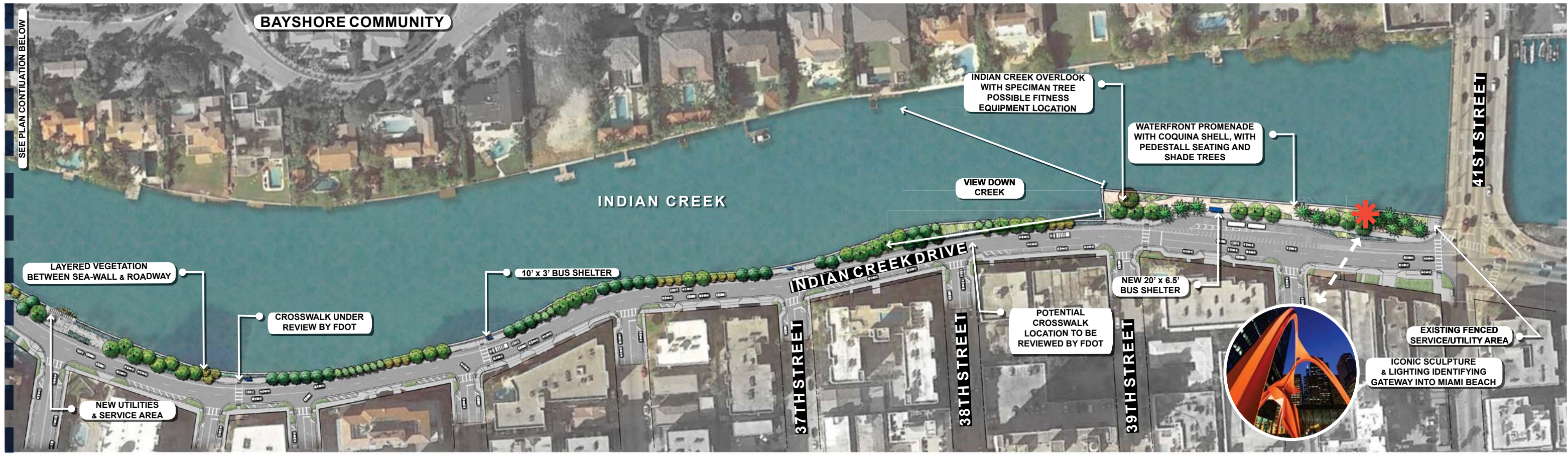
COLUMN/PYLON LIGHT POLES AT 41ST STREET NODE & ALONG COLLINS ONLY.



SHIELDED BOLLARDS



DYNAMIC SPECIMAN TREE UPLIGHTING

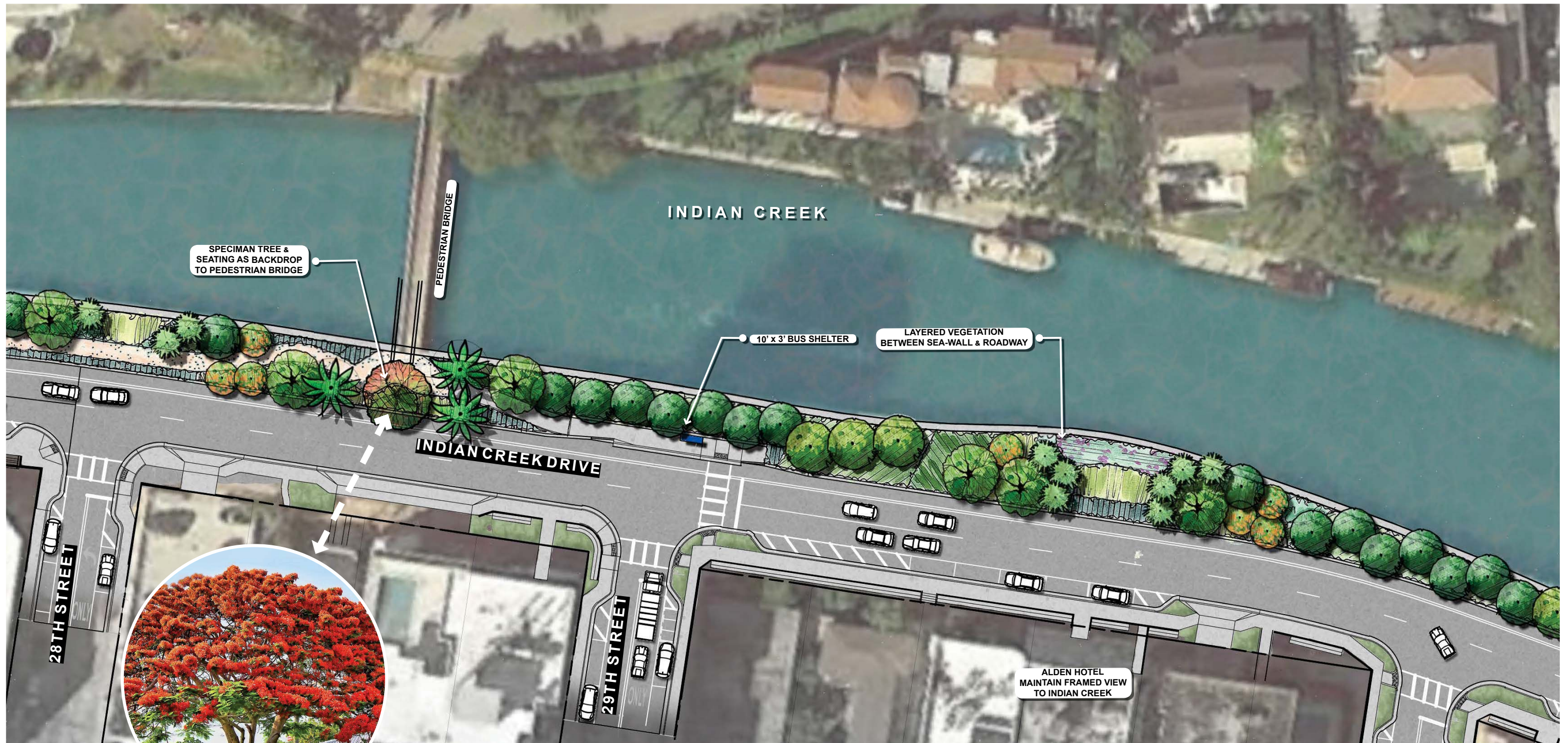




NORTH NODE VIGNETTE - CONCEPT 1

VITALLY IMPORTANT TO THIS CONCEPT IS THE IDEA OF "GATEWAYS" OR MIAMI BEACH IDENTITY AS PEOPLE ENTER THE CITY ACROSS THE 41ST STREET BRIDGE. THIS BRIDGE SERVES AS A THRESHOLD AND COULD PUNCTATE BOTH MIAMI BEACH AND THE INDIAN CREEK DRIVE. AN ICONIC SCULPTURE COULD BE INCORPORATED AS THE SPACE RADIATES WITH GRAND ROYAL PALMS AND SHADE TREES ALONG A PROMENADE. PEDESTAL SEATING, A SIGNATURE SPECIMAN TREE AND COQUINA SHELL PATHWAYS COMPLETE THIS PEDESTRAIN ORIENTED WATERFRONT. PATTERNS & THEMES ARE DERIVED FROM THOSE THROUGHOUT MIAMI BEACH SUCH AS THE RICH ART DECO HISTORY OR THE ICONIC MIAMI BEACH PROMENADE.

08.30.2019



**ROYAL POINCIANA
(OR ALTERNATE SPECIES)
SPECIMAN TREE**

TYPICAL PLAN VIGNETTE - CONCEPT 1

ELABORATING ON THE "IDEAL SECTION", THIS TYPICAL PLAN ILLUSTRATES THE IDEA THAT CROSS STREETS CAN BE BUFFERED TO PREVENT LIGHT POLLUTION INTO THE RESIDENCES ACROSS THE CREEK TO THE WEST. SIGNIFICANT MOMENTS CAN BE CREATED WITH VEGETATION TYPES AS DEPICTED HERE WITH A RED ROYAL POINCIANA TREE SERVING AS THE BACKDROP AND KEY FEATURE OF THE PEDESTRIAN BRIDGE. (OTHER SPECIES OR DESIGN ALTERNATIVES MAY BE EXPLORED) DUE TO LIMITED SPACE, VEGETATION TAKES DOMINANCE. GROUND PLANE PLANT MATERIAL IS TO PROVIDE SCREENING FROM LIGHT POLLUTION (CREATED BY CARS AND STREETLIGHTS) BUT ALSO FRAME ICONIC MIAMI BEACH ARCHITECTURE SUCH AS THE ALDEN HOTEL. ROYAL PALMS ARE USED IN THIS MIDDLE NODE TO LINK THE NORTHERN NODE CONTEXTUALLY FOR UNIFORM DESIGN CHARACTER.



SOUTH NODE VIGNETTE - CONCEPT 1

UPON APPROACHING THE SOUTH NODE FROM THE NORTH, THERE IS CURRENTLY A SIGNIFICANT VIEW OF LAKE PANCOAST. HOWEVER, PLANS ARE UNDERWAY TO ACCOMMODATE MANGROVE GARDENS IN THIS ZONE. TO PRESERVE AN ALTERNATIVE VIEWING EXPERIENCE, AN ELEVATED SPACE WITH THE SIGNATURE SPECIMAN TREE MAY PROVIDE A SPECIFIC VIEWING OPPORTUNITY FOR PATRONS ABOVE THE MANGROVES BEFORE THEY MATURE. THIS METHOD OF VIEW MAY ALSO GIVING OPPORTUNITY FOR A MANGROVE OVERLOOK AND EDUCATIONAL SIGNAGE. THIS COQUINA PATHWAY CONNECTS FROM THE PEDESTRIAN BRIDGE TO THE NORTH, AND COLLINS AVENUE TO THE SOUTH.

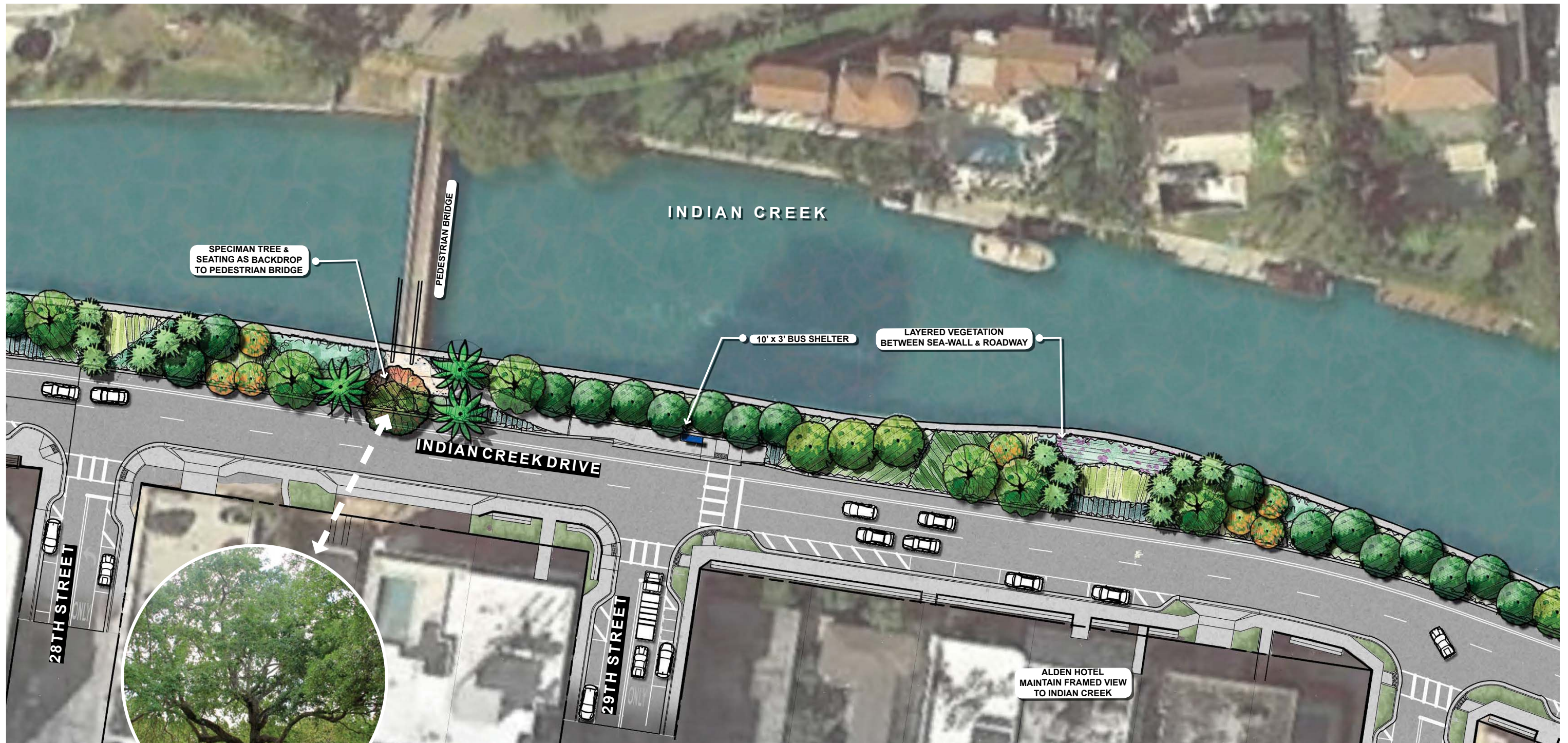
08.30.2019





NORTH NODE VIGNETTE - CONCEPT 2

SIMILAR TO CONCEPT 1 IN CHARACTER, BUT ELIMINATES PEDESTRIAN ACCESS TO THE WATERS EDGE, REPLACED WITH LUSH TROPICAL AND NATIVE VEGETATION IN A DRAMATIC ARC PATTERN WITH COLOR INCORPORATED TO HIGHLIGHT THIS ENTRY THRESHOLD INTO MIAMI BEACH. IN KEY LOCATIONS, ROYAL PALMS ARE USE FOR THEIR ICONIC SCALE BUT TO ALSO ALLOW THE AREA TO HAVE HIGH VISIBILITY AT THE PEDESTRIAN SCALE.



**ROYAL POINCIANA
(OR ALTERNATIVE SPECIES)
SPECIMAN TREE**

TYPICAL PLAN VIGNETTE - CONCEPT 2

IN CONCEPT 1, A CONQUINA SHELL PATHWAY FROM THE PEDESTRAIN BRIDGE CONNECTS TO THE NEW BUS STOP AREA TO THE NORTH AND CONTINUES SOUTHWAY ALONG INDIAN CREEK. IN CONCEPT 2, PLANTING TAKES PRECIDENT ENTIRELY WHICH BY ELEMINTING THE PATHWAY TO THE SOUTH.



SOUTH NODE VIGNETTE - CONCEPT 2

THIS CONCEPT ELIMINATES THE COQUINA PEDESTRAIN PATHWAY IN FAVOR OF AN ENTIRELY VEGETATED AREA. PLANT MATERIALS ARE TO TRANSITION FROM MANGROVES INTO LOWLAND GREEN BUTTWOOD THEN INTO HAMMOCK SPECIES SUCH AS GUMBO LIMBO. ROYAL PALMS IN BOTH CONCEPT 1 & 2 BOOKEND THE PROJECT AREA AS TO COMPLIMENT THE 41ST STREET GREEN SPACE. ROYAL PALMS WILL ALSO ALLOW PATRONS TO VIEW LAKE PANCOAST FROM COLLINS AVENUE.

JERSEY BARRIER CONCEPT 1

PAINT FRONT AND REAR WALLS. SUNRISE PATTERN ON REAR WITH MIAMI BEACH RED BASE. FRONT WALL REMINICENT OF ART DECO OR MANGROVE PATTERN WITH BASE OF PALE BLUE. ALL COLORS ARE TO BE BASED ON A PALETTE OF MIAMI BEACH ART DECO.



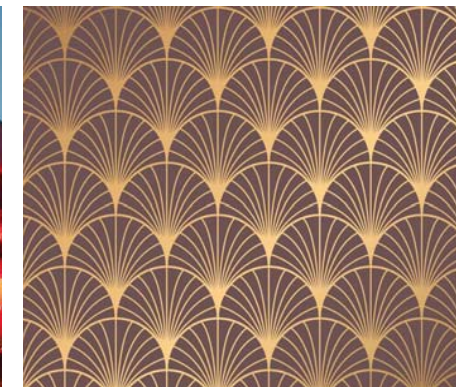
OTHER EXAMPLES OF PAINTED BARRIERS



JERSEY BARRIER CONCEPT 1 ENLARGEMENT



MIAMI BEACH ART DECO



08.30.2019



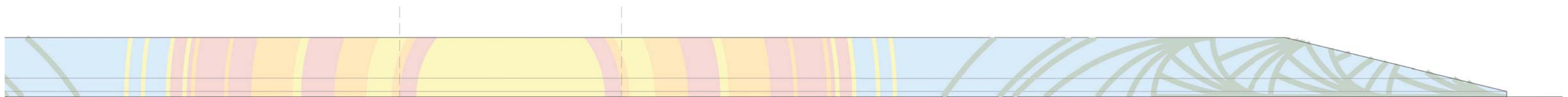
JERSEY BARRIER CONCEPT 2

PAINT REAR WALL WITH PATTERN. PAINT FRONT WALL ONE SINGULAR COLOR, PALE BLUE. PATTERN TO BE REMINICENT OF SUNRISE WITH MIAMI BEACH RED BASE TRANSITIONING TO ART DECO OR MANGROVE PATTERN WITH BASE OF PALE BLUE. ALL COLORS ARE TO BE BASED ON A PALETTE OF MIAMI BEACH ART DECO.

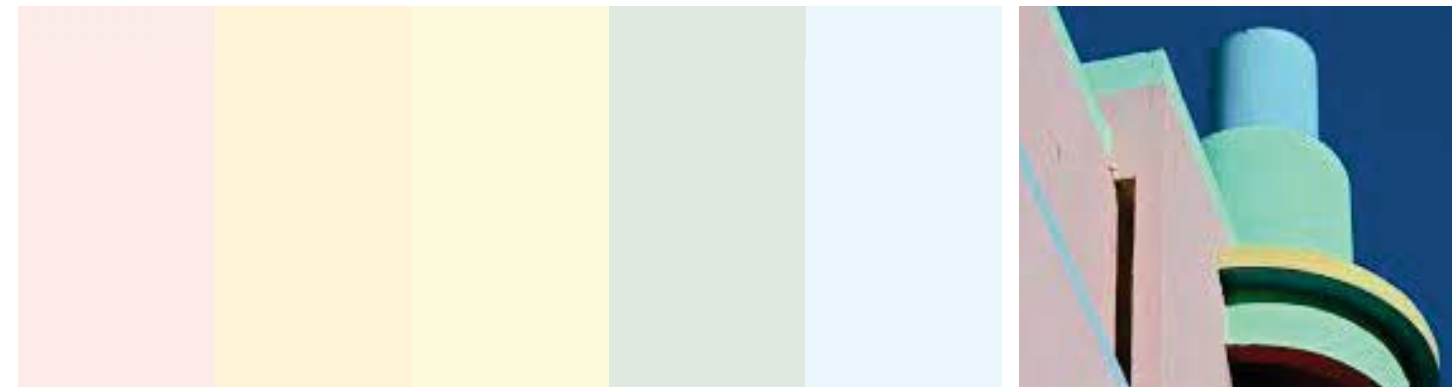
INSPIRATION IMAGES



JERSEY BARRIER CONCEPT 2 ENLARGEMENT



COLOR PALETTE



08.30.2019