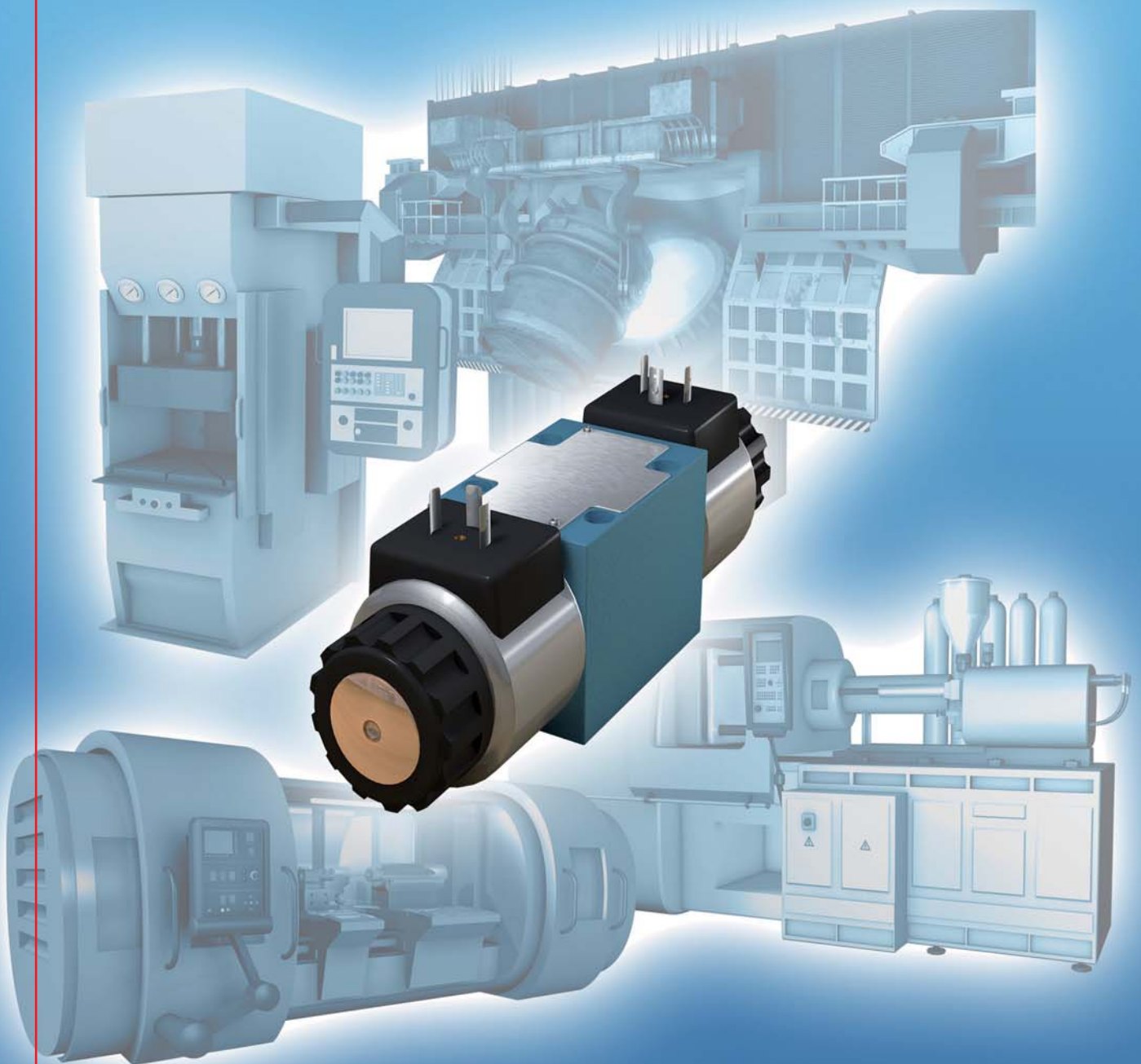


HYDAC

INTERNATIONAL

HYDAC Fluidtechnik: Industrial Valves

Check Valve ZW RV / ZW RP - Modular





Check valve as sandwich plate housing ZW-RV06

Up to 350 bar
Up to 50 l/min

Symbols

ZW-RV06 P

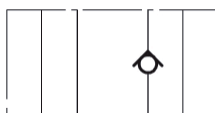
P1 T1 A1 B1



P2 T2 A2 B2

ZW-RV06 A

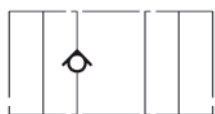
P1 T1 A1 B1



P2 T2 A2 B2

ZW-RV06 T

P1 T1 A1 B1



P2 T2 A2 B2

ZW-RV06 B

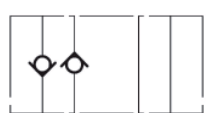
P1 T1 A1 B1



P2 T2 A2 B2

ZW-RV06 PT

P1 T1 A1 B1



P2 T2 A2 B2

Features

- Hole pattern according to DIN 24340 Form A6, ISO 4401-03, nominal size 06
- Check valve as sandwich plate housing with check function in one direction, full flow in opposite direction
- according to DIN 24340 Form A6, ISO 4401 (use longer screws)
- type according to ISO 7790
- adjustable by tool

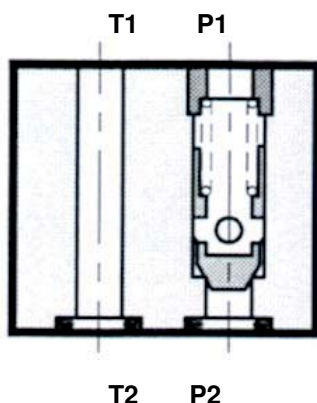
Types.

- type A: check valve in line A
- type B: check valve in line B
- type P: check valve in line P
- type T: check valve in line T
- type PT: check valve in line P and T

Specifications

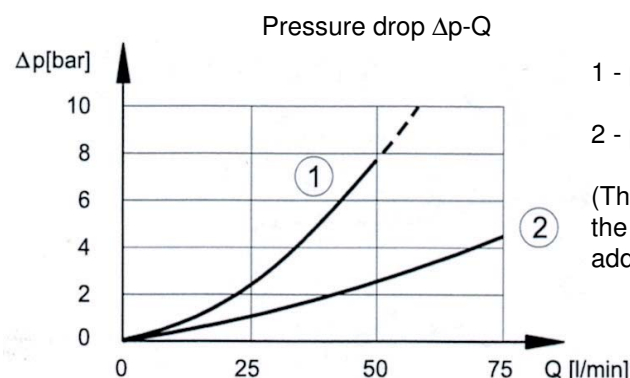
Operating pressure:	max. 350 bar
Cracking pressure:	0,5 bar, on request 3,5 bar and 5,2 bar
Nominal flow:	max. 50 l/min (in controlled lines) max. 75 l/min (in free lines)
Fluids:	hydraulic oil according to DIN 51524 Part 1 and 2
Media operating temp. range:	-20 °C up to max. +80 °C
Ambient temperature range:	-20 °C up to max. +50 °C
Viscosity range:	10 – 400 mm ² /s is recommended
Filtration:	Class 20/18/15 to ISO 4406 or cleaner
Weight:	1,0 kg

Function



Curves

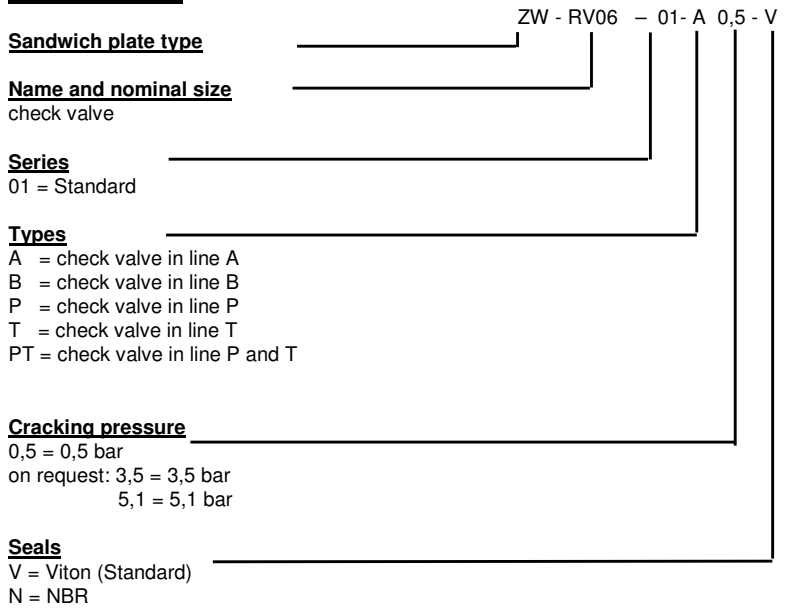
measured at $t = 50\text{ °C}$, $\nu = 32\text{ mm}^2/\text{s}$



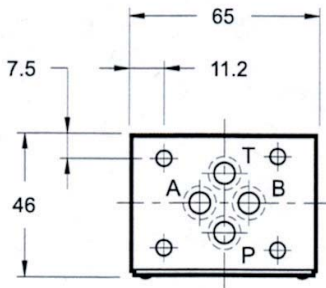
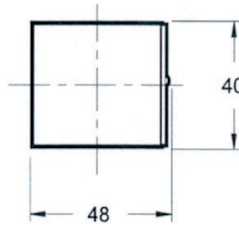
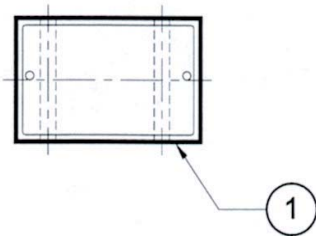
- 1 - pressure drop free check line
 - 2 - pressure drop free line
- (The cracking pressure of the check valve has to be added to curve 1)

Standard models	Part No.
ZW-RV06-01-A-0,5-V	6074180
ZW-RV06-01-B-0,5-V	6074181
ZW-RV06-01-P-0,5-V	6074182
ZW-RV06-01-T-0,5-V	6074183
ZW-RV06-01-PT-0,5-V	6074184
Other types on request	

Model code



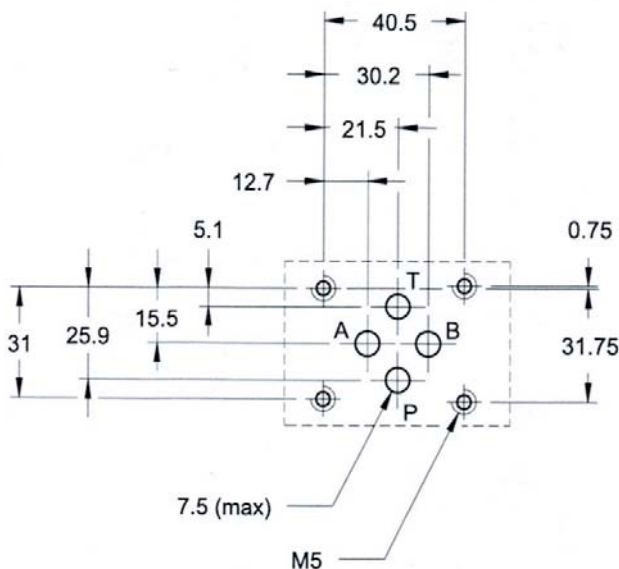
Dimensions



1 – O-Ring 9,25 x 1,78-90Sh (4 pcs.)

All dimensions in mm.
Fixing elements are not in scope of delivery.

Mounting plate according to ISO 4401-03



Annotation

The information in this brochure relates to the operating conditions and applications described. For applications or operating conditions not described, please contact the relevant technical department. Subject to technical modifications.

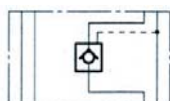
Address: HYDAC Fluidtechnik
Street Justus-von-Liebig-Str. 5
City 66280 Sulzbach / Saar
Tel. 06897 / 509 -0
Fax 06897 / 509 -598
Email flutec@hydac.com



Pmax = 350 bar
Qmax = 50 l/min

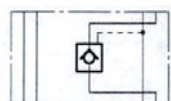
Symbols

ZW-RP06 AA
P1 T1 A1 B1



P2 T2 A2 B2

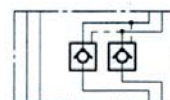
ZW-RP06 AB
P1 T1 A1 B1



P2 T2 A2 B2

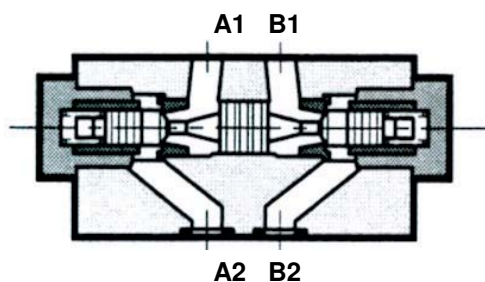
ZW-RP06 AAB

P1 T1 A1 B1



P2 T2 A2 B2

Function



Pilot to open check valve as sandwich plate housing **ZW-RP06**

Features

- Hole pattern according to DIN 24340 Form A6, ISO 4401-03, nominal size 06
- Pilot to open check valve as sandwich plate housing with check function in one direction, full flow in opposite direction – after unblocking also in the other direction
- easy to assemble under body mounted spool valves according to DIN 24340 Form A6, ISO 4401 (use longer screws)
- type according to ISO 7790
- adjustable by tool

Types

- type AA: Check in line A
- type AB: Check in line B
- type AAB: Check in line A and B

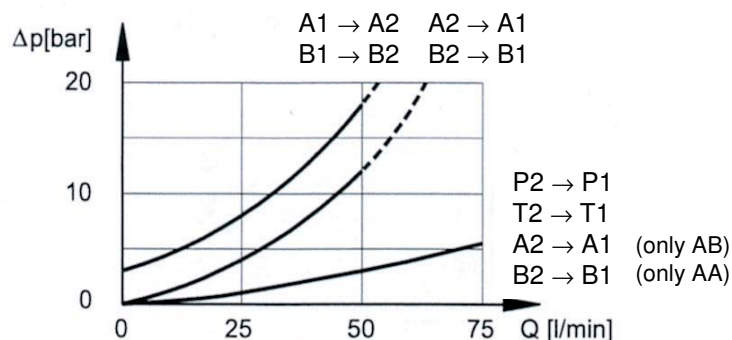
Specifications

Operating pressure:	max. 350 bar
Opening pressure:	0,5 bar
Pilot ratio:	3,4 : 1
Nominal flow:	max. 50 l/min (in controlled lines) max. 75 l/min (in free lines)
Fluids:	hydraulic oil according to DIN 51524 Part 1 and 2
Media operating temp. range:	-20 °C up to max. +80 °C
Ambient temperature range:	-20 °C up to max. +50 °C
Viscosity range:	10 – 400 mm ² /s is recommended
Filtration:	Class 20/18/15 to ISO 4406 or cleaner
Weight:	1,3 kg incl. Valves

Curves

measured at $t = 50\text{ °C}$, $\nu = 32\text{ mm}^2/\text{s}$

Pressure drop $\Delta p\text{-}Q$

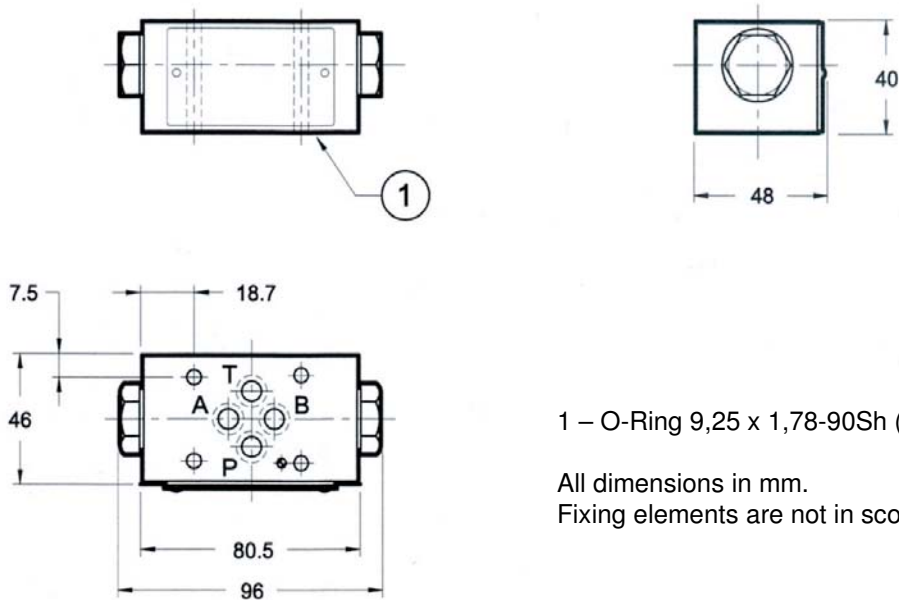


Standard models	Part No.
ZW-RP06-01-AA-V	6074190
ZW-RP06-01-AB-V	6074191
ZW-RP06-01-AAB-V	6074192
Other types on request	

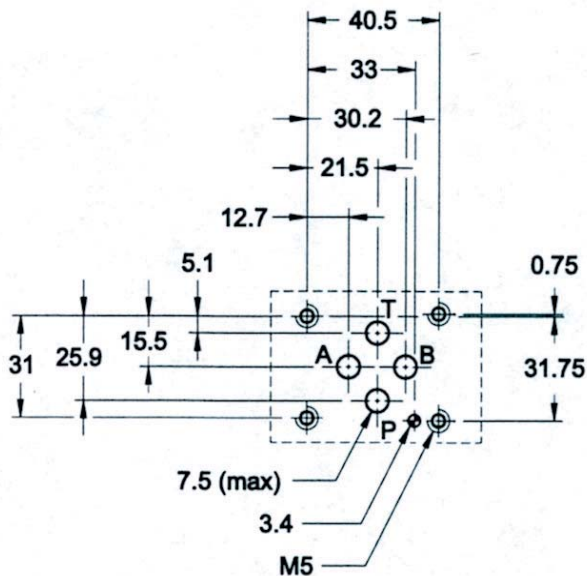
Model code

	ZW - RP06- 01- AA - V
Sandwich plate type	_____
Name and nominal size Pilot to open check valve	_____
Series 01 = Standard	_____
Types AA = Blocking in line A AB = Blocking in line B AAB = Blocking in both lines	_____
Seals V = Viton (Standard) N = NBR	_____

Dimensions



Mounting plate according to ISO 4401-03



Annotation

The information in this brochure relates to the operating conditions and applications described. For applications or operating conditions not described, please contact the relevant technical department. Subject to technical modifications.

Address: HYDAC Fluidtechnik
 Street Justus-von-Liebig-Str. 5
 City 66280 Sulzbach / Saar
 Tel. 06897 / 509 -0
 Fax 06897 / 509 -598
 Email flutec@hydac.com

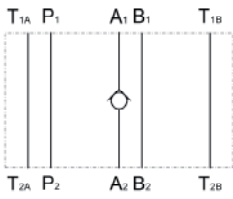


Check valve as sandwich plate housing ZW-RV10

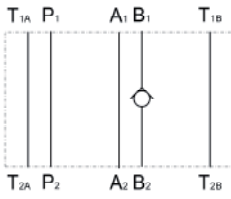
up to 350 bar
up to 100 l/min

Symbols

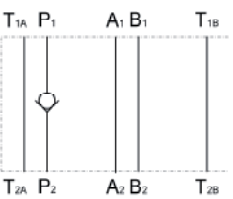
ZW-RV10 A



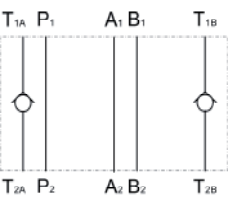
ZW-RV10 B



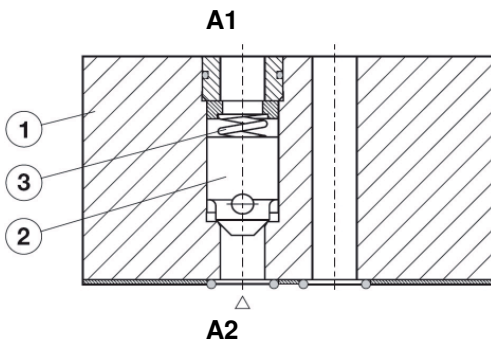
ZW-RV10 P



ZW-RV10 T



Function



- 1 - Housing
- 2 - RV insert
- 3 - Spring

Features

- Hole pattern to DIN 24340, ISO 4401, nominal size 10
- Check valve as sandwich plate housing with check function in one direction, free backflow in the opposite direction
- easy to assemble under body mounted spool valves to DIN 24340, to ISO 4401 (use longer screws)
- type to ISO 7790

types.

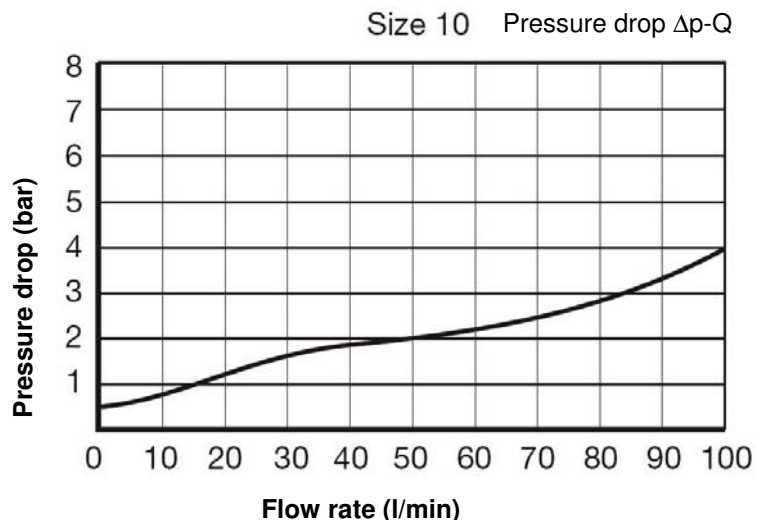
- type A: Check valve in line A
- type B: Check valve in line B
- type P: Check valve in line P
- type T: Check valve in line T

Specifications

Nominal pressure:	max. 350 bar
Cracking pressure:	0,4 bar
Nominal flow:	max. 100 l/min
Fluids:	Hydraulic fluid to DIN 51524 part 1 and 2
Media operating temp. range:	-20 °C up to max. +70 °C
Ambient temperature range:	-20 °C up to max. +50 °C
Viscosity range:	15 – 380 mm ² /s is recommended
Filtration:	Class 20/18/15 to ISO 4406 or cleaner
	ISO 4410 Class 20/18/15 to ISO 4406
Weight:	2,77 kg

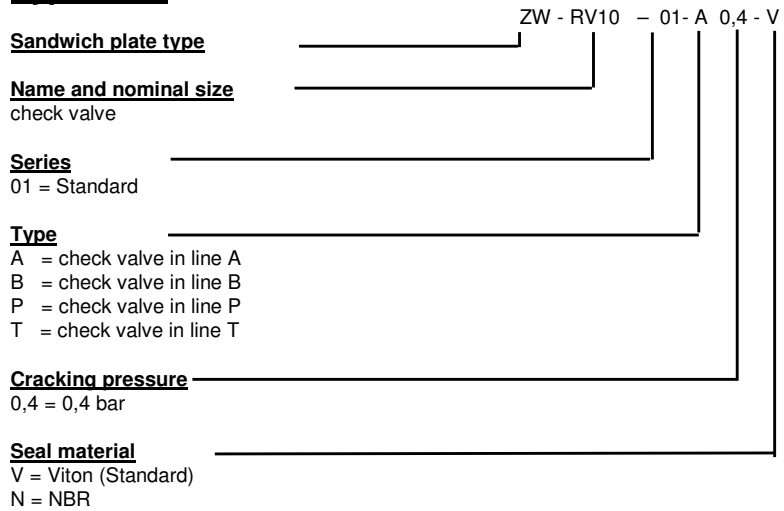
Diagrams

measured at $t = 50\text{ °C}$, $v = 32\text{ mm}^2/\text{s}$



Standard models type	Mat-Nr.
ZW-RV10-01-A-0,4-V	6078903
ZW-RV10-01-B-0,4-V	6078904
ZW-RV10-01-P-0,4-V	6078905
ZW-RV10-01-T-0,4-V	6078906
other types on request	

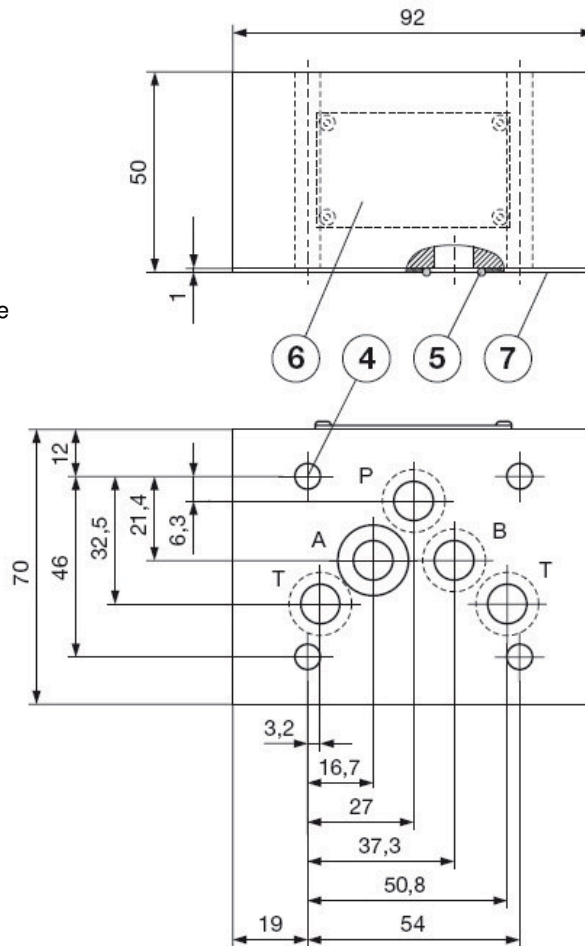
Type code



Dimensions

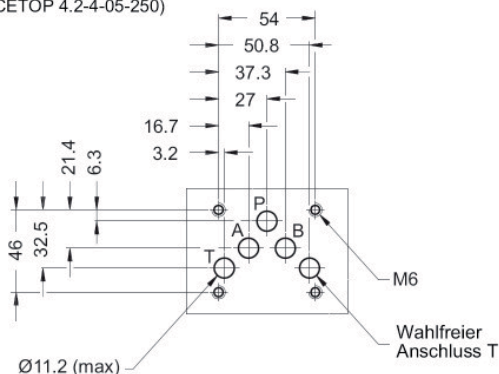
4. Bore holes for fixing screws M6
5. O-Ring 12,42 x 1,78 NBR
6. Type plate
7. O-Ring plate

All dimensions in mm.
Fastening elements are not in the scope of supply.



Mounting plate to ISO 4401-05

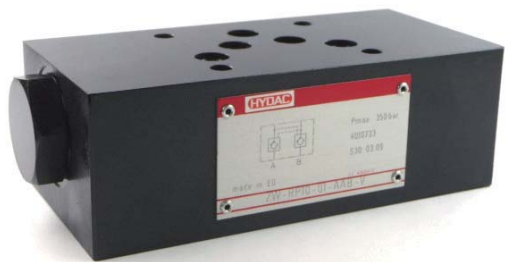
ISO 4401-05-04-0-94
(CETOP 4.2-4-05-250)



Annotation

The information in this brochure relates to the operating conditions and applications described. For applications or operating conditions not described, please contact the relevant technical department. Subject to technical modifications.

Address: HYDAC Fluidtechnik
Street Justus-von-Liebig-Str. 5
City 66280 Sulzbach / Saar
Tel. 06897 / 509 -0
Fax 06897 / 509 -598
Email flutec@hydac.com



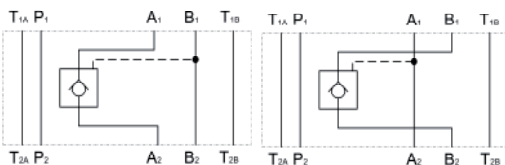
Pilot to open check valve as sandwich plate housing ZW-RP10

up to 350 bar
up to 100 l/min

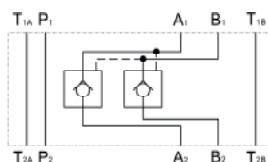
Symbols

ZW-RP10 AA

ZW-RP10 AB



ZW-RP10 AAB



Features

- Hole pattern to DIN 24340, ISO 4401, nominal size 10
- Pilot top open check valve as sandwich plate housing with check function in one direction, free backflow in the opposite direction – to open also in the opposite direction
- easy to assemble under body mounted spool valves to DIN 24340, to ISO 4401 (use longer screws)
- adjustable by tool

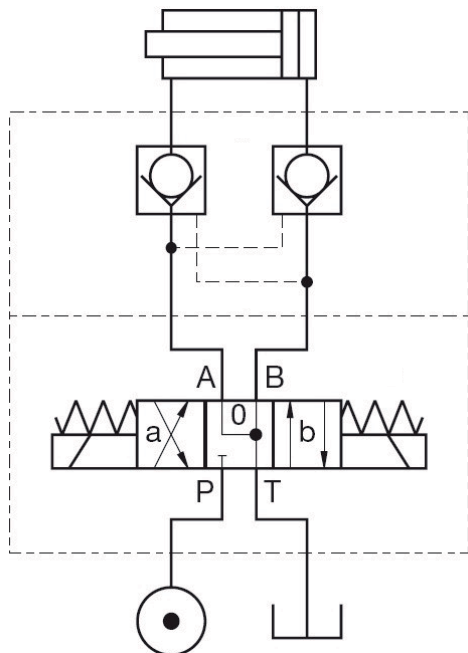
types

- type AA: check in line A
- type AB: check in line B
- type AAB: check in line A and B

Specifications

Nominal pressure:	max. 350 bar
Ratio:	3,6 : 1
Cracking pressure:	0,5 bar
Nominal flow:	max. 100 l/min
Fluids:	Hydraulic fluid to DIN 51524 part 1 and 2
Media operating temp. range:	-20 °C up to max. +70 °C
Ambient temperature range:	-20 °C up to max. +50 °C
Viscosity range:	15 – 380 mm ² /s is recommended
Filtration:	Class 20/18/15 to ISO 4406 or cleaner ISO 4410 Class 20/18/15 to ISO 4406
Weight:	3,5 kg incl. valve

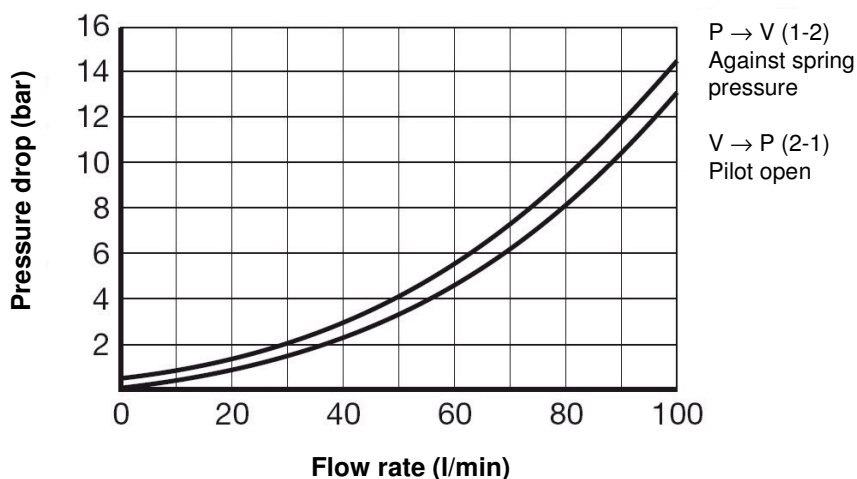
Function



Diagrams

measured at $t = 50\text{ °C}$, $v = 32\text{ mm}^2/\text{s}$

Pressure drop Δp -Q



Standard models type Mat-Nr.
 ZW-RP10-01-AA-V 6078912
 ZW-RP10-01-AB-V 6078913
 ZW-RP10-01-AAB-V 6078914
 other types on request

Type code

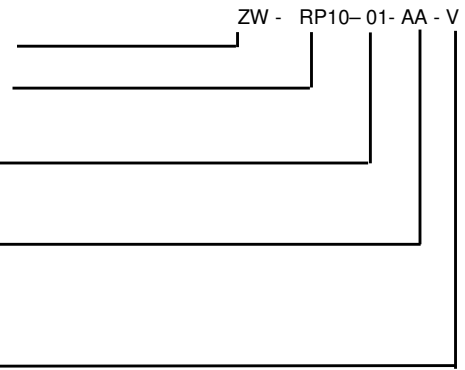
Sandwich plate type

Name and nominal size
 Pilot to open check valve

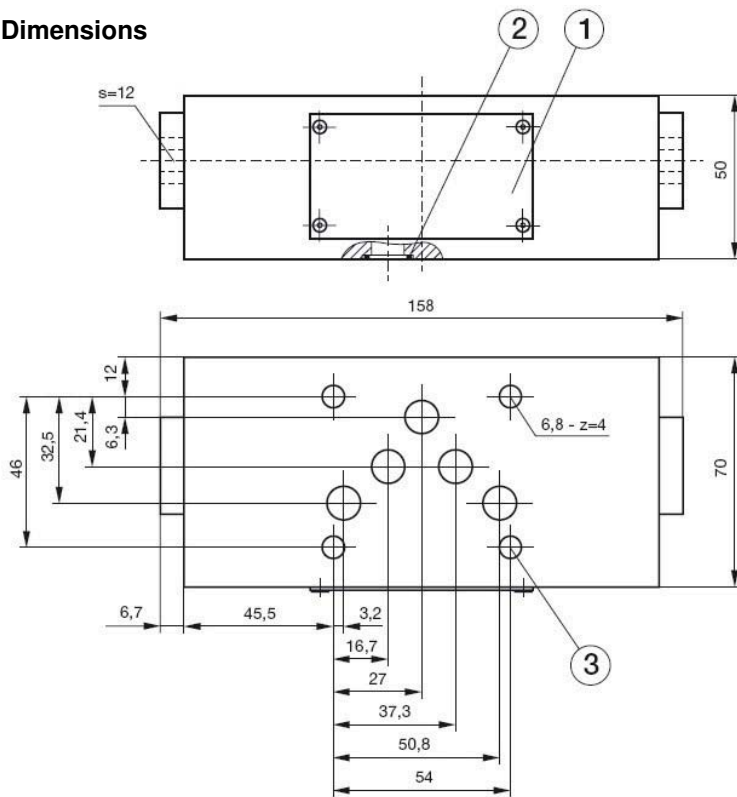
Series
 01 = Standard

Type
 AA = check in line A
 AB = check in line B
 AAB = check in both lines

Seal material
 V = Viton (Standard)
 N = NBR



Dimensions

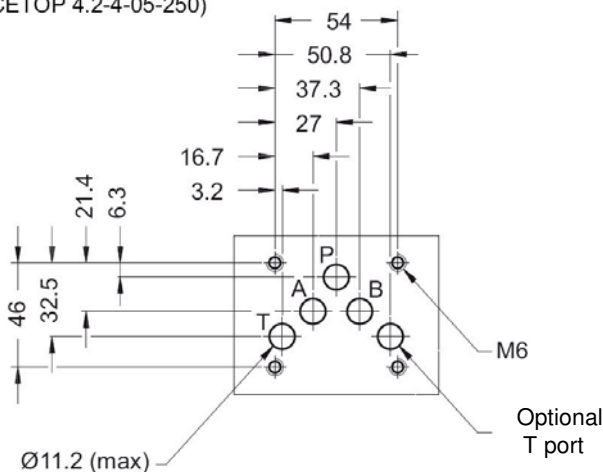


- 1 - Type plate
- 2 - O-Ring 12,42 x 1,78 NBR
- 3 - Bore holes for fixing screws M6

All dimensions in mm.
 Fastening elements are not in the scope of supply.

Mounting plate to ISO 4401-05

ISO 4401-05-04-0-94
 (CETOP 4.2-4-05-250)



Annotation

The information in this brochure relates to the operating conditions and applications described. For applications or operating conditions not described, please contact the relevant technical department. Subject to technical modifications.

Address: HYDAC Fluidtechnik
 Street Justus-von-Liebig-Str. 5
 City 66280 Sulzbach / Saar
 Tel. 06897 / 509 -0
 Fax 06897 / 509 -598
 Email flutec@hydac.com