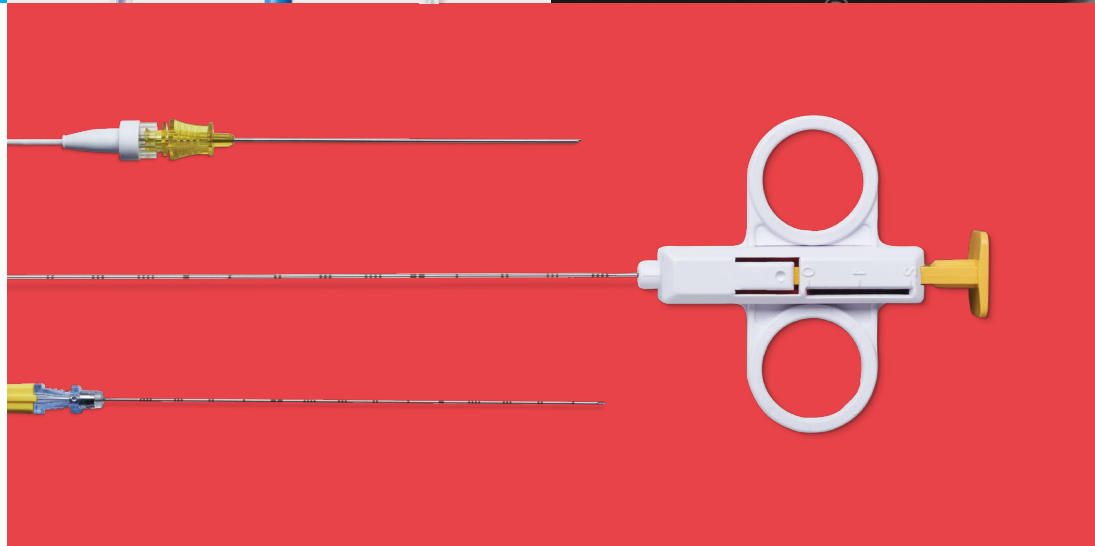
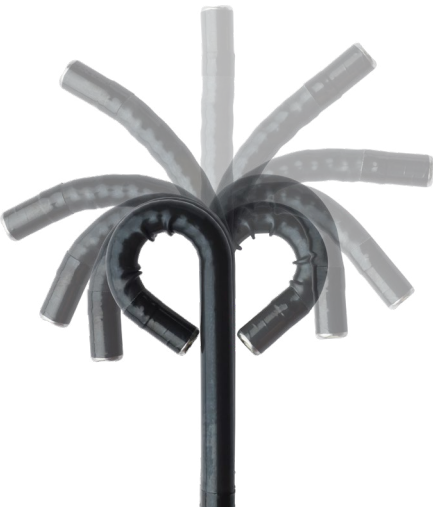
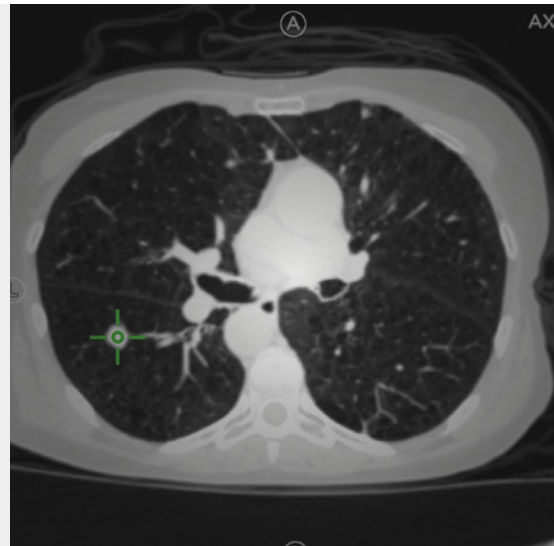
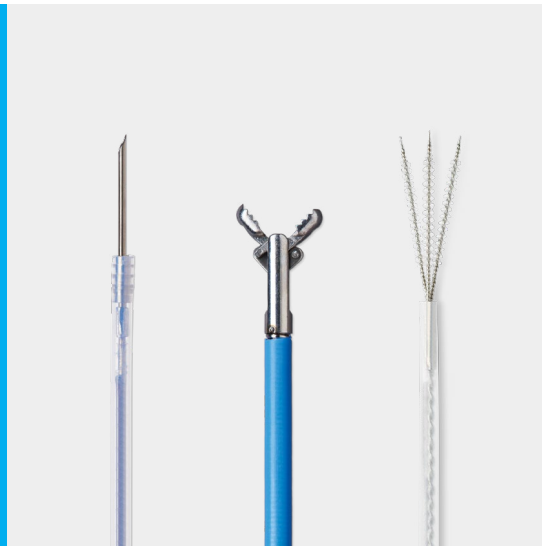


# Always-On Tip Tracked<sup>®</sup> Instruments

SPIN THORACIC NAVIGATION SYSTEM<sup>®</sup>



# Navigate boldly.

## Minimal learning curve

While our brushes, needles, and forceps are navigated, they are just like the conventional instruments you're used to. All bronchoscopic sampling instruments fit down a 2.0mm WC or larger. SPiN Vision™ Scopes and Always-On Tip Tracked® Instruments work similar to conventional instruments you are already using.

## Superior navigation

Our revolutionary Always-On Tip Tracked® Instruments feature electromagnetic sensors that enable you to see straight to the nodule throughout the entire procedure—even during biopsy.

- Reach peripheral targets
- Accurately navigate through patient anatomy with precision trajectory guidance
- Eliminate the need for fluoroscopy

## Versatile application

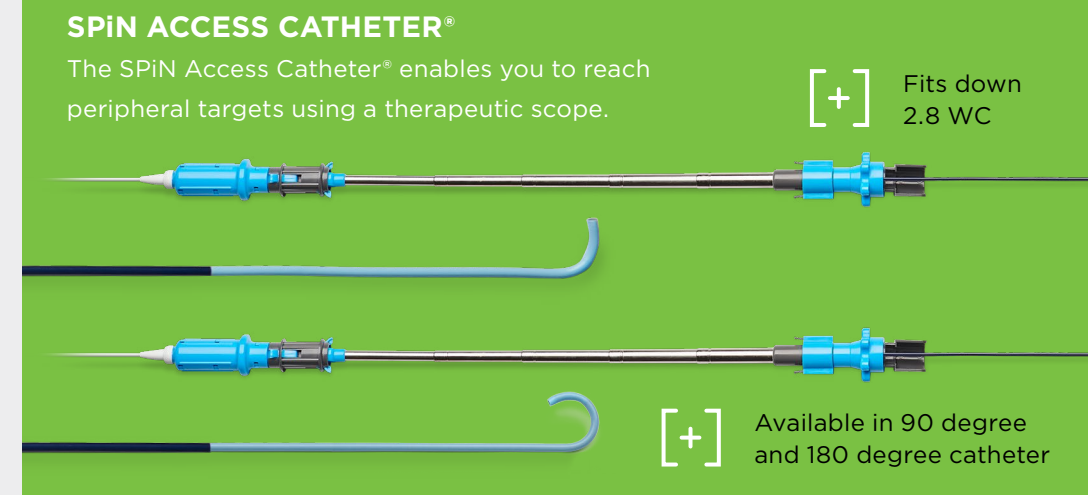
Utilize the power of built-in visualization for:

- Navigated bronchoscopy and navigated TTNA
- Fiducial marker placement
- Localization for surgical resection



**SPiN VISION™ SCOPES\***  
Use our always available 4.0mm or 6.0mm OD single-use scope to eliminate cross-contamination risk due to reprocessing.

[+]  
Flex 210° in either direction and lock in place



**SPiN ACCESS CATHETER®**  
The SPiN Access Catheter® enables you to reach peripheral targets using a therapeutic scope.

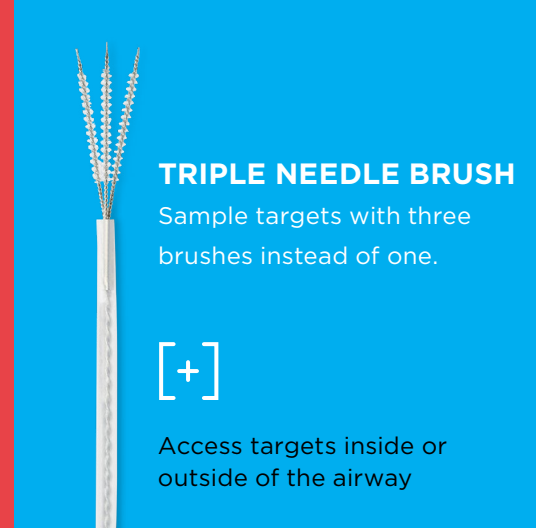
[+]  
Fits down 2.8 WC

[+]  
Available in 90 degree and 180 degree catheter



**SPiN FLEX® NEEDLE**  
The 22ga laser-etched Nitinol needle enables tight turns.

[+]  
Ideal for TBNA



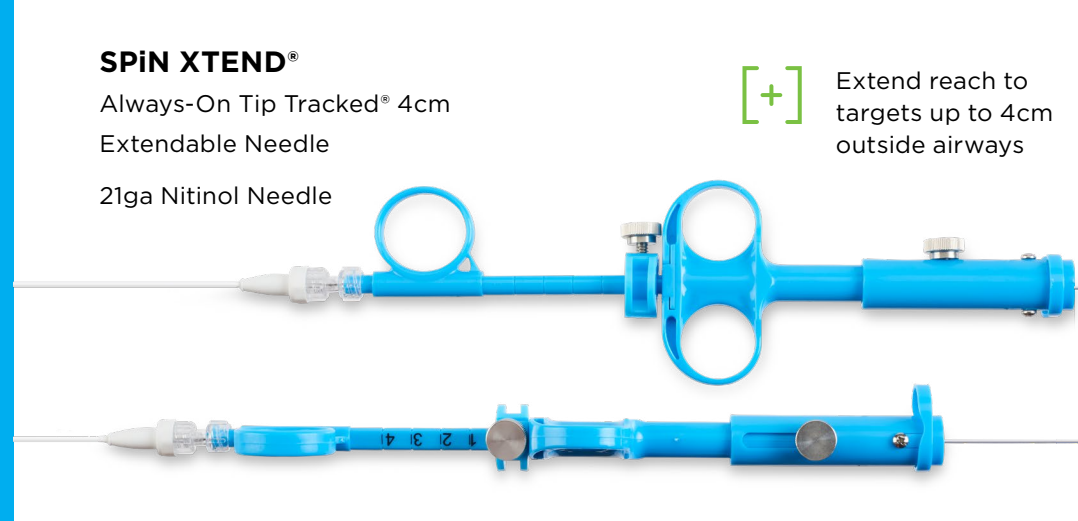
**TRIPLE NEEDLE BRUSH**  
Sample targets with three brushes instead of one.

[+]  
Access targets inside or outside of the airway



**BRUSHES, NEEDLES AND FORCEPS**  
Multiple needle and forceps sizes are available for accurate tissue sampling.

[+]  
Histology and cytology needles available

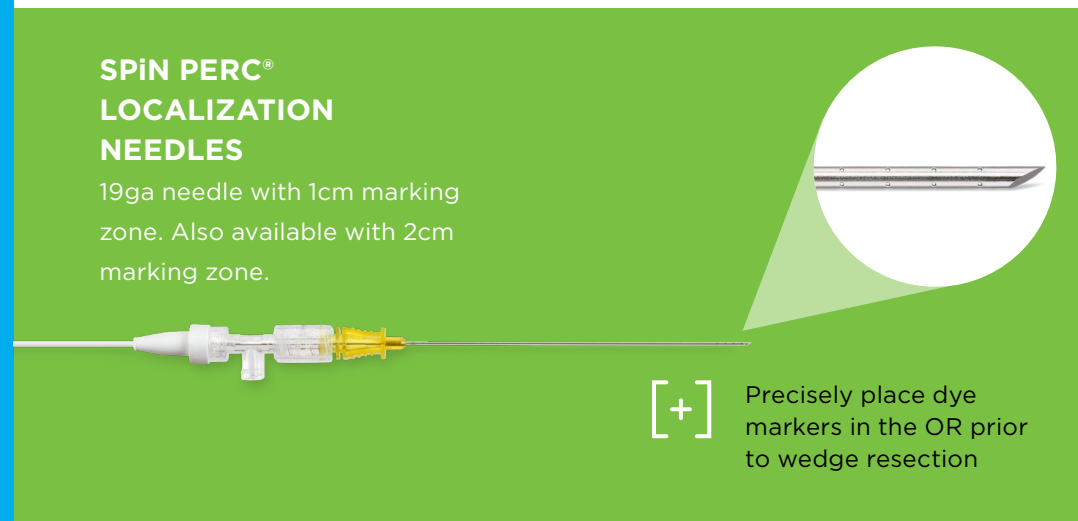


**SPiN XTEND®**  
Always-On Tip Tracked® 4cm Extendable Needle  
21ga Nitinol Needle

[+]  
Extend reach to targets up to 4cm outside airways

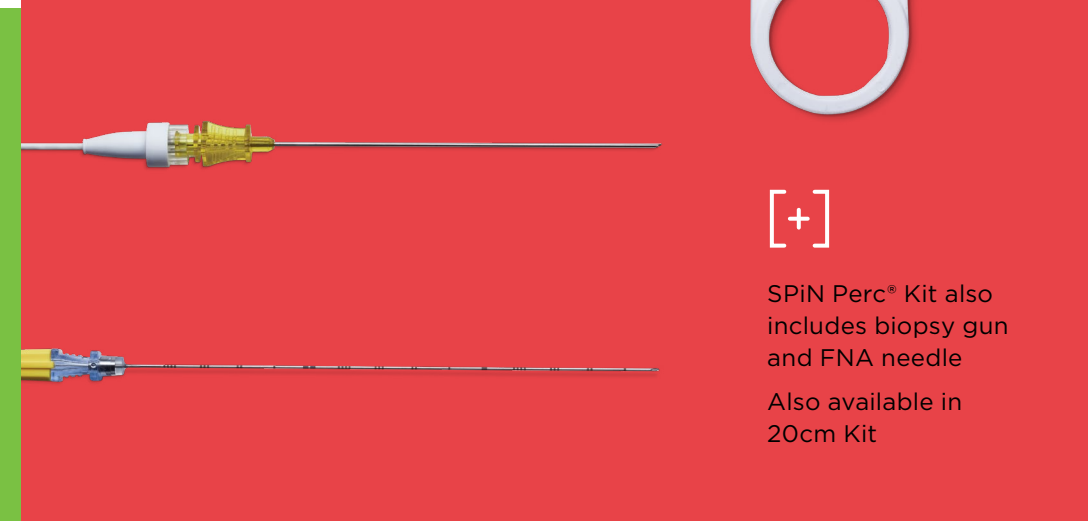


**SPiN PERC® NEEDLE**  
Target peripheral nodules outside the airway with a 19ga x 105mm tip-tracked biopsy needle, which enables a percutaneous approach.



**SPiN PERC® LOCALIZATION NEEDLES**  
19ga needle with 1cm marking zone. Also available with 2cm marking zone.

[+]  
Precisely place dye markers in the OR prior to wedge resection



[+]  
SPiN Perc® Kit also includes biopsy gun and FNA needle  
Also available in 20cm Kit

## Contact us

Learn how Veran is revolutionizing bronchoscopy and schedule a demo.

### **Veran Medical Technologies**

1938 Innerbelt Business Center Dr. | St. Louis, MO 63114

**P** 314.659.8500 | **F** 314.659.8560 | **E** [orders@veranmedical.com](mailto:orders@veranmedical.com)

All patent and trademarks are the property of their respective owners - see [www.veranmedical.com/patents/](http://www.veranmedical.com/patents/)

\*SPIN Vision™ Scopes and Video Processor Distributed by Veran Medical Technologies, Inc.; Manufactured by Hunan Vathin Medical Instrument Co. Ltd.

