



Goatfish and Puffers of Hawaii

REEF Fishinar September 6th, 2017, Janna Nichols - Instructor

Questions? Feel free to contact janna@REEF.org

	<p>Yellowstripe Goatfish – Goatfish Family <i>Mulloidichthys flavolineatus</i> (aka Square-spot Goatfish) Up to 16” Black rectangular spot within yellow stripe can fade or darken. Fins are white. Never appear reddish. Photo by Janna Nichols</p>
	<p>Yellowfin Goatfish – Goatfish Family <i>Mulloidichthys vanicolensis</i> Up to 15” White bodies, yellow fins. Stripe along body. Can appear reddish when being cleaned or in dark places. Photo by Bill Stohler</p>
	<p>Manybar Goatfish – Goatfish Family <i>Parupeneus multifasciatus</i> Up to 11” Variable red, white and brown bars on body, base of tail usually dark. Photo by Bill Stohler</p>
	<p>Island Goatfish – Goatfish Family <i>Parupeneus insularis</i> (aka Doublebar Goatfish) Up to 13” Tall body profile, fat lips, rounded tail, white bar at base of tail. Photo by Janna Nichols</p>



Sidespot Goatfish – Goatfish Family

Parupeneus pleurostigma

Up to 13"

White, gray or light pink overall, these guys have a tall black spot on its side, with a round white spot behind it.

Photo by Janna Nichols



Blue Goatfish – Goatfish Family

Parupeneus cyclostomus

Up to 20"

Blue body with yellow saddle near base of tail. Often seen pack hunting with jacks for small fish, which is weird for a goatfish.

Photo by Janna Nichols



Whitesaddle Goatfish – Goatfish Family

Parupeneus porphyreus

Up to 15"

Usually reddish body color, with horizontal light streaks back from eye, and a white spot (*the saddle*) near base of tail.

Hawaiian Islands only

Photo by David R. Andrew



Porcupinefish – Porcupinefish Family

Diodon hystrix

Up to 28"

Small black spots all over body and fins. Spines generally lay flat.

Circumtropical

Photo by Janna Nichols



Balloonfish – Porcupinefish Family

Diodon holocanthus

(aka Longspine Porcupinefish)

Up to 15"

Crazy cool eye. Small black spots NOT on fins. Larger dark blotches on body. Spines more obvious. (*spines pop the balloons*)

Circumtropical

Photo by Janna Nichols



Hawaiian Whitespotted Toby – Puffer Family

Canthigaster jactator

Up to 3.5”

White spots on body. GREEN eyes!

Hawaiian Islands only

Photo by David R. Andrew



Ambon Toby – Puffer Family

Canthigaster amboinensis

Up to 5”

Blue lines radiate from eye, blue spots on body

Photo by Bill Stohler



Crown Toby – Puffer Family

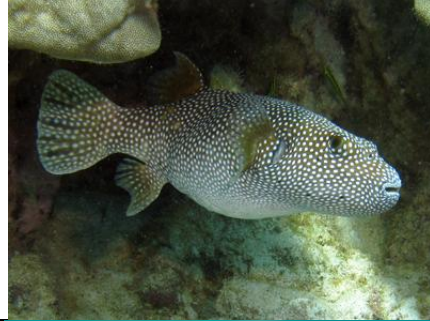
Canthigaster coronata

Up to 5”

Four dark saddles on body and head.

Hawaiian Islands only

Photo by Janna Nichols



Spotted Puffer – Puffer Family

Arothron meleagris

(aka Guineafowl Puffer)

Up to 13”

Brown to black base color, with white dots all over body and fins.

Photo by Janna Nichols



Stripebelly Puffer – Puffer Family

Arothron hispidus

Up to 19”

White spots all over, dark round mark at base of pectoral fin, stripes below.

Photo by Bill Stohler