

Kings Road Church

Quality Bicycles —  
Since 1983.



Model: X3 Open Frame

 **RIDGEBACK**

[ridgeback.co.uk](http://ridgeback.co.uk)

   [Ridgebackbikes](#)  
[#Ridgebackbikes](#)

# RIDGEBACK

QUALITY BICYCLES SINCE 1983

At Ridgeback we know what an important part of life bikes are. Since 1983 we've been making bikes for all kinds of riders, from high performance flat bar mountain and touring bikes to comfortable commuters and children's bikes – and now E-Bikes, too. We lead the way in making practical and fun bikes that fit in with your lifestyle.

This year the word is E-Bike. Fun to ride and extremely useful, E-Bikes are perfect for riders of all ages and make the bicycle the perfect mode of transport for all types of situation. We have more E-Bikes in the Ridgeback range than ever before, ready to take you from A to B and keep you comfortable while you do it. The trend towards E-Bikes over the last couple of years has been rapid, and at Ridgeback we want to offer the most versatile and dependable range that we can in this new and exciting category.

Another category that we've expanded is cargo bikes. Fantastically practical for anyone living in a city, the cargo bike makes transporting things and making deliveries easy in an environment where a car or van can sometimes be more of a hindrance than a help. With the Cargo-E, Butcher and MK5, we have a cargo bike for you no matter what you need to do.

Of course, all that doesn't mean we've neglected our urban and children's bikes. As the core of the Ridgeback range, we're constantly refining the urban bikes to offer the best possible bike at every price point, whether that's £300 or £900.

Our kids range is one of the most comprehensive on the market and we're incredibly proud of that. From balance bikes all the way up to 26" wheels, Ridgeback can be a companion to your kids from their very first bike until they climb onto their first full-size ride as a teenager.

We are proud supporters of [www.freewheel.co.uk](http://www.freewheel.co.uk) which offers cyclists an opportunity to browse and buy all of our bikes online, while money from every purchase will still go to local bike shops.



Model: Arcus 1

# ELECTRIC BIKES NEVER BREAK A SWEAT

The cycling revolution has arrived and it's electrified! E-Bikes are giving everyone an opportunity to build cycling into their lifestyle and enjoy the benefits that a little exercise and time outdoors brings.

Whatever the challenge, an E-Bike can take you there – from a commute that features steep hills, or a distance to travel that's just a little too far on a regular bicycle.

With pedal-assist you're in control of the boost you receive, allowing you to choose to make use of the power at the right time, while beating the traffic.

The motor will even seamlessly cut in and out once you reach cruising speed or you're freewheeling downhill, keeping that all-important

battery in reserve for when you need it most.

Here at Ridgeback we've put together a comprehensive range of E-Bikes for every budget, while paying close attention to the real needs of riders. Not everyone is going to be riding huge distances or up massive climbs, so why carry the extra weight of a larger battery and motor when you can reap the rewards of a lighter, more efficient system?

We've also integrated the most useful features for everyday riders on our key models, so you won't need to worry about forgetting your lights or fitting mudguards.

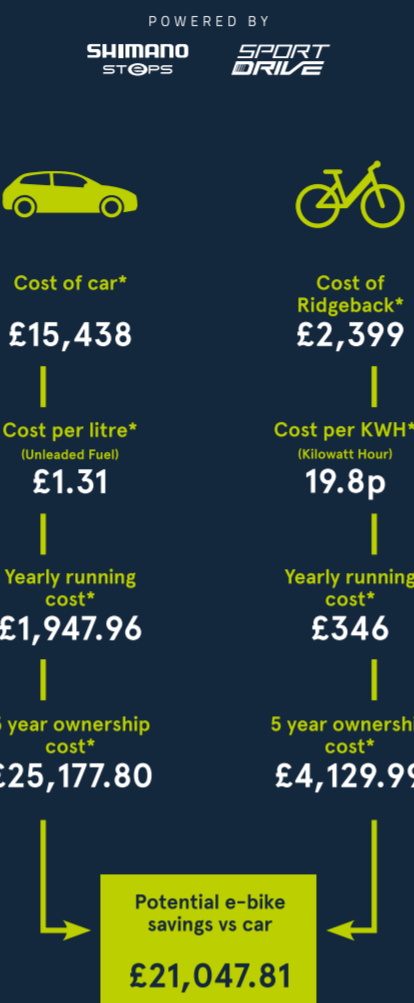
All you'll have to do is charge and then enjoy the ride – trust us, it's addictive!



Model: X3 Open Frame



## AFFORDABLE ASSISTANCE



\*Based on most popular new car cost 2018, average cost of fuel, electricity, parts, labour, insurance and mileage. Figures may vary.

### SYSTEM HIGHLIGHTS



418wh - 504wh battery capacity - 40/60/70nm drive unit torque  
250w drive unit power - Upto 180km range - 4.5-7.5 hour full charge time  
300wh - 400wh battery capacity - 95nm drive unit torque  
250w drive unit power - Upto 100km range - 4.5-6 hour full charge time



Model: Scout



Model: Dimension 14



## Real Bikes. Not Toys.

We're not trying to say that cycling shouldn't be fun. Of course it should be. More than anything cycling should be fun, especially for children who are faced with the challenge of learning to cycle. What we are saying however, is that our children's bikes are much more than toys.

They are built to last and built to take a lifetime of being bashed, dropped, bumped and bruised. They are more than something that will be played with one day and forgotten the next: our bikes are here to help young riders fall in love with cycling. To help guide them on a journey from their first wobbly balance bike ride, right through to throwing a leg over an adult's bike in their teens.

At Ridgeback we also really believe in balance bikes over stabilisers. After helping so many children learn to ride we have found that learning to get the balance right before moving to pedals is a much more effective method. We can't guarantee this way works for everyone but it's certainly what we recommend.

But above all, you need to keep the learning process fun and positive. Think about praising their achievements and not letting them dwell on the mistakes. It can be tough and there will likely be some tears, but stick with it and who knows how far they'll go.

# Making History – since '83

At Ridgeback, we've been building bikes since 1983 and have an unmatched reputation for innovation and quality. From high performance flat bar and touring bikes to comfortable commuters and children's bikes, we lead the way. Take a look back at some of our landmark bikes here...



### THE FIRST RIDGEBACK

**In the beginning**  
Ridgeback launched the UK's first mountain bike.

**Everyday Cycling**  
The Ridgeback Roxy arrived in 1990 and it was an early forerunner of today's Leisure and Commute range – the benchmark by which all other commuter bikes are measured.



### GENESIS DAY 03

**Something totally new**  
In 2001, we created the flat bar road bike. Originally called Genesis, this new breed of fast commuter sports bike was regarded as a significant development in cycle genres.

Despite having evolved significantly, the DNA of this bike runs through today's range.



### SWITCH STORM

**Mountain or Street Bike?**  
Our Urban series was another trend setter. Developed back in 1998, these slick-tired street mountain bikes were not only lots of fun to ride but provided a real alternative to the more traditional style commuting bikes.

They became the Switch series in 2003, and the line ran right up until 2012.



### DUAL TRACK ADVANCE

**Big wheels keep on rolling**  
The Dual Track was a robust all-rounder with 29" wheels, aimed at riders looking for a more comfortable off-road experience.

Originally designed as a mountain bike, today's Dual Track is more off-road hybrid than MTB.

Using 700c road rims instead of traditional 26" wheels, the Dual Track's larger tyres give the bike a longer contact patch for improved traction while rolling over lumps and bumps smoothly.



### FLIGHT R25

**25th Anniversary**  
In 2008 we launched the R25 to mark our 25th anniversary. It was a limited edition of one hundred very special flat bar road bikes – at the time it was Ridgeback's most advanced flat bar we'd ever made.

Five years on and it's clear that the R25 was a precursor of the future of braking on flat bar bikes as it was equipped with Shimano Deore XT hydraulic discs. Today, all Flight series bikes come equipped with hydraulic disc brakes.



### SUPERNOVA XT

**30th Anniversary**  
It's been 24 years since we launched our first hybrid bike, the Roxy. That bike was a predecessor to the Metro series, one of the most successful commuter bike ranges in the UK.

To celebrate our 30th anniversary, last year's Metro series included a limited-edition Supernova equipped with Shimano's premium level Deore XT components. The 2014 Supernova XT offered fifty lucky riders the opportunity to own a practical and comfortable commuting bike of the highest quality. On top of that, each one was individually numbered from 1-50, making them an exclusive purchase.



### X2

**The here and now**  
2019 has been a huge year of change here at Ridgeback. A complete rebrand, new frame designs and new models galore, we've really jumped to the next level. But our most exciting development has been the rise of the electric bike. They're perfect for everything from commuting to leisure riding – and even delivery with our new cargo model.

Electric bikes are the future and we have plans to expand our range even further over the coming months and years. Our pick of the current bunch is the X2, falling in the E-SUV category, it's ideal for tackling both track and trail seven days a week.



ELECTRIC BIKES

# AFFORDABLE ASSISTANCE

Ridgeback E-Bikes give you the freedom to ride further and faster through town and country.

Featuring the latest in motor technology, our new range is more adaptable than ever before.

A huge variety of models mean you can select the E-Bike that's right for you – whether that's a lightweight system for short-distance use on the road – or the latest high torque, large capacity motors and batteries for long distance, mixed terrain journeys.

Our Arcus and Electron ranges offer our best ever value entry point into E-Bikes, while maintaining all the power and range you need to make them ideal for daily short-haul trips in an urban environment.

Move up to our X2, X3 and Cyclone ranges to enjoy the extra power of the excellent Shimano STEPS systems which increase range, while our top of the line Advance provides the ultimate utility E-Biking experience.

Beyond the tech, we haven't forgotten the practical side of our e-bike range that makes the everyday a little easier. Touches on selected models including mudguards, integrated lighting systems and pannier racks keep you on the move.

Whatever you're looking for in an e-bike, our capable range will have you riding further in comfort than you thought possible.

Through [www.freewheel.co.uk](http://www.freewheel.co.uk) we are also able to offer 0% Finance on all full-priced bikes over £500 which can be an attractive option for higher ticket items like E-Bikes.



Model: X3



SHIMANO STEPS



## Advance

**Frame:** STEPS 6061 Heat Treated Aluminium Internal Battery **Fork:** Suntour NEX-E25NLO, 63mm Travel  
**Drivetrain:** Shimano STEPS FC-E6100 170M, 38t **Motor:** Shimano STEPS DU-E6100, 250w, 60nm Torque  
**Battery:** Darfon Internal, 504wh **Brakes:** Shimano BR-MT401 Hydraulic Brakes **Tyres:** WTB Venture 700x50c  
**Sizes:** M/L **Colour:** Grey

SHIMANO STEPS



## Advance Red

**Frame:** STEPS 6061 Heat Treated Aluminium Internal Battery **Fork:** Suntour NEX-E25NLO, 63mm Travel  
**Drivetrain:** Shimano STEPS FC-E6100 170M, 38t **Motor:** Shimano STEPS DU-E6100, 250W, 60nm Torque  
**Battery:** Darfon Internal, 504wh **Brakes:** Shimano BR-MT401 Hydraulic Brakes **Tyres:** WTB Venture 700x50c  
**Sizes:** M/L **Colour:** Fire Engine Red

## SYSTEM HIGHLIGHTS

SHIMANO STEPS

418wh - 504wh battery capacity  
 40/60/70nm drive unit torque  
 250w drive unit power  
 Up to 180km range  
 4.5 - 7.5 hour full charge time

SPORT DRIVE

300wh - 400wh battery capacity  
 95nm drive unit torque  
 250w drive unit power  
 Up to 100km range  
 4.5 - 6 hour full charge time

# SPEED THROUGH THE CITY

For 2021 we've added a third brand of E-Bike system to our range in the shape of Promovec. Promovec's commitment to quality is backed up by an extended warranty if you register your battery via the Promovec website. With innovative designs and quality systems, you'll see their hub drive units featuring on the MK5 and Butcher models.

We have also added new drive unit and battery combinations from SportDrive and Shimano STEPS. We're particularly excited about the Arcus 1 model. Utilising SportDrive's M155 rear hub motor. When paired with a 300wh battery, it can produce a range of up to 55km and a charge time of 3 hours. Perfect for the daily commute or a longer weekend ride.

We've increased the use of the fantastically powerful and efficient Shimano STEPS E6100 drive unit too. A key model using this drive system is the Ridgeback

Advance, which tops out the range. On this model we use a 504wh internal battery to give the Advance a maximum range of a whopping 185km.

The world of cycling and everyday transport is changing, for 2021 we have our most rounded and capable range of E-Bikes yet.



Model: X3

SHIMANO STEPS



## Cyclone

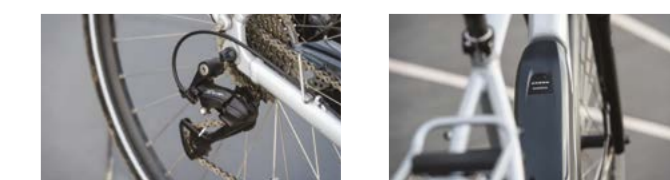
**Frame:** 6061 Heat Treated Aluminium  
**Fork:** Suntour NEX 63mm Travel  
**Drivetrain:** Shimano STEPS FC-E6100 / 44t / 170mm  
**Motor:** Shimano STEPS DU-E6100 36v / 60nm / 250w  
**Battery:** Shimano BT-E8014 418wh  
**Brakes:** Shimano BR-MT200 Hydraulic Disc Brakes  
**Tyres:** CST Xpedium Ampero 700x38c  
**Sizes:** S/M - M/L **Colour:** Silver

SHIMANO STEPS



## Cyclone Open Frame

**Frame:** 6061 Heat Treated Aluminium  
**Fork:** Suntour NEX 63mm Travel  
**Drivetrain:** Shimano STEPS FC-E6100 / 44t / 170mm  
**Motor:** Shimano STEPS DU-E6100 36v / 60nm / 250w  
**Battery:** Shimano BT-E8014 418wh  
**Brakes:** Shimano BR-MT200 Hydraulic Disc Brakes  
**Tyres:** CST Xpedium Ampero 700x38c  
**Sizes:** S/M - M/L **Colour:** Grey





SHIMANO  
STEPS



### Electron Di2

**Frame:** 6061 Heat Treated Aluminium **Fork:** Suntour NEX 63mm Travel  
**Drivetrain:** Shimano STEPS FC-E5000 / 38t / 170mm **Motor:** Shimano STEPS DU-E5000 36v / 40nm / 250w  
**Battery:** Shimano BT-E6000 418wh **Brakes:** Shimano BR-MT200 Hydraulic Disc Brakes **Tyres:** CST Xpedium Ampero 700x38c  
**Sizes:** S/M - M/L **Colour:** Metallic Blue



SHIMANO  
STEPS



### X3

**Frame:** 6061 Heat Treated Aluminium **Fork:** Suntour NEX-E25NLO, 63mm Travel  
**Drivetrain:** Shimano STEPS FC-E6100 170M, 38t **Motor:** Shimano STEPS DU-E6100, 250w, 60nm Torque  
**Battery:** Shimano STEPS BT-E8014, 418wh **Brakes:** Shimano BR-MT401 Hydraulic Brakes **Tyres:** WTB Riddler 700x45c Reflex  
**Sizes:** S - M - L **Colour:** Green

SHIMANO  
STEPS



### Electron +

**Frame:** 6061 Heat Treated Aluminium  
**Fork:** Steel Disc / mudguard eyelets  
**Drivetrain:** Shimano STEPS FC-E5000 / 38t / 170mm  
**Motor:** Shimano STEPS DU-E5000 36v / 40nm / 250w  
**Battery:** Shimano BT-E6000 418wh  
**Brakes:** Shimano BR-MT200 Hydraulic Disc Brakes  
**Tyres:** CST Xpedium Ampero 700x38c  
**Sizes:** S/M - M/L **Colour:** Burgundy



SHIMANO  
STEPS



### X3 Open Frame

**Frame:** 6061 Heat Treated Aluminium  
**Fork:** Suntour NEX-E25NLO, 63mm Travel  
**Drivetrain:** Shimano STEPS FC-E6100 170M, 38t  
**Motor:** Shimano STEPS DU-E6100, 250w, 60nm Torque  
**Battery:** Shimano STEPS BT-E8014, 418wh  
**Brakes:** Shimano BR-MT401 Hydraulic Brakes  
**Tyres:** WTB Riddler 700x45c Reflex  
**Sizes:** S - M **Colour:** Silver

SPORT  
DRIVE



### Electron

**Frame:** 6061 Heat Treated Aluminium  
**Fork:** Steel Disc / mudguard eyelets  
**Drivetrain:** SportDrive / 38t / 170mm  
**Motor:** SportDrive MD250S 36v / 95nm / 250w  
**Battery:** SportDrive 300wh w/ Integrated Light  
**Brakes:** Shimano BR-MT200 Hydraulic Disc Brakes  
**Tyres:** Schwalbe Silento 700x42c  
**Sizes:** S/M - M/L **Colour:** Champagne Silver



### Electron - Front Hub Drive

**Frame:** 6061 Heat Treated Aluminium  
**Fork:** Steel Disc / mudguard eyelets  
**Drivetrain:** Steel/Alloy 170Mm, 36t  
**Motor:** SportDrive M123, 250w, 30nm  
**Battery:** SportDrive 313wh  
**Brakes:** Shimano BR-MT200 Hydraulic Disc Brakes  
**Tyres:** CST Xpedium Ampero 700x38c  
**Sizes:** S/M - M/L **Colour:** Charcoal Black or Fire Engine Red

SPORT  
DRIVE



SHIMANO  
STEPS



### X2

**Frame:** 6061 Heat Treated Aluminium  
**Fork:** Suntour NEX HLO 63mm Travel  
**Drivetrain:** Shimano STEPS FC-E5010 170M, 38t  
**Motor:** Shimano STEPS DU-E5000, 250w, 40nm Torque  
**Battery:** Shimano STEPS BT-E8014, 418wh  
**Brakes:** Shimano BR-MT200 Hydraulic Brakes  
**Tyres:** WTB Riddler 700x45c Reflex  
**Sizes:** S - M - L **Colour:** Blue

SHIMANO  
STEPS



### X2 Open Frame

**Frame:** 6061 Heat Treated Aluminium  
**Fork:** Suntour NEX HLO 63mm Travel  
**Drivetrain:** Shimano STEPS FC-E5010 170M, 38t  
**Motor:** Shimano STEPS DU-E5000, 250w, 40nm Torque  
**Battery:** Shimano STEPS BT-E8014, 418wh  
**Brakes:** Shimano BR-MT200 Hydraulic Brakes  
**Tyres:** WTB Riddler 700x45c Reflex  
**Sizes:** S - M **Colour:** Purple



SPORT DRIVE



**Arcus 2**

**Frame:** 6061 Heat Treated Aluminium **Fork:** ZOOM 188D, LO, 63mm Travel  
**Drivetrain:** SportDrive 170mm, 42t **Motor:** SportDrive MD250S, 250w, 90nm  
**Battery:** SportDrive 418wh **Brakes:** Shimano BR-MT200 Hydraulic Brakes **Tyres:** WTB Riddler 700x45c Reflex  
**Sizes:** S - M - L **Colour:** Dark Blue



SPORT DRIVE



**Arcus 2 Open Frame**

**Frame:** 6061 Heat Treated Aluminium  
**Fork:** ZOOM 188D, LO, 63mm Travel  
**Drivetrain:** SportDrive 170mm, 42t  
**Motor:** SportDrive MD250S, 250w, 90nm  
**Battery:** SportDrive 418wh  
**Brakes:** Shimano BR-MT200 Hydraulic Brakes  
**Tyres:** WTB Riddler 700x45c Reflex  
**Sizes:** S - M **Colour:** Blue

When bags and panniers aren't enough, Ridgeback cargo bikes are built to carry the largest loads! Strong and versatile, our cargo bikes have practically shaped and contained areas for your goods and feature heavy-duty components to handle the extra weight.

Promovec



**MK5**

**Frame:** 6061 Heat Treated Aluminium **Fork:** n/a  
**Drivetrain:** Alloy 170mm / 42t **Motor:** Promovec 50971, 250w, 40nm **Battery:** Promovec 500wh  
**Brakes:** Tektro HD-E530/525 Hydraulic Brakes **Tyres:** Kenda CBT 20/26x1.95"  
**Sizes:** One Size **Colour:** Black

For 2021 we've added a third brand of eBike system to our range in the shape of Promovec from Denmark. Continuously focusing on the reliability and stability of their system, Promovec constantly develop their technology so it stays relevant, durable and practical.

A drive to be a carbon neutral company has seen Promovec manufacture their own batteries out of a 'green' facility in Denmark. Robotic welding and an extremely high level of QC ensure that their batteries are produced to a quality standard. This is commitment to quality is backed up by an extended warranty if you register your battery via the Promovec website.

With innovative designs and quality systems, you'll see their hub drive units featuring on the MK5 and Butcher models.

Promovec SYSTEM HIGHLIGHTS

500wh - 600wh battery capacity - 40/43/nm drive unit torque  
 250w drive unit power - Upto 150km range\* - 4-5 hour full charge time



SPORT DRIVE



**Arcus 1**

**Frame:** 6061 Heat Treated Aluminium  
**Fork:** ZOOM CH187, 63mm Travel  
**Drivetrain:** SportDrive 170mm, 42t  
**Motor:** SportDrive M155, 250w, 40nm  
**Battery:** SportDrive 313wh  
**Brakes:** Shimano BR-MT200 Hydraulic Brakes  
**Tyres:** WTB Riddler 700x45c Reflex  
**Sizes:** S - M - L **Colour:** Grey

SPORT DRIVE



**Arcus 1 Open Frame**

**Frame:** 6061 Heat Treated Aluminium  
**Fork:** ZOOM CH187, 63mm Travel  
**Drivetrain:** SportDrive 170mm, 42t  
**Motor:** SportDrive M155, 250w, 40nm  
**Battery:** SportDrive 313wh  
**Brakes:** Shimano BR-MT200 Hydraulic Brakes  
**Tyres:** WTB Riddler 700x45c Reflex  
**Sizes:** S - M **Colour:** Silver



SHIMANO STEPS



**Cargo-e**

**Frame:** 6061 Heat Treated Aluminium  
**Fork:** CrMo Disc w/ Mudguard Eyelets  
**Drivetrain:** Shimano STePS 44t  
**Motor:** Shimano STePS E8000 Mid-Motor, 70nm  
**Battery:** Shimano STePS 504wh  
**Brakes:** Shimano BR-MT200 Hydraulic Brakes  
**Tyres:** Kenda Komfort 20/26x1.95in  
**Sizes:** One Size **Colour:** Black

Promovec



**Butcher**

**Frame:** 6061 Heat Treated Aluminium  
**Fork:** Steel Cargo Disc  
**Drivetrain:** Alloy 175mm / 42t  
**Motor:** Promovec 50750, 250w, 43nm  
**Battery:** Promovec 600wh  
**Brakes:** Shimano BR-MT200 Hydraulic Brakes  
**Tyres:** Continental Ride Tour 20/26x1.75"  
**Sizes:** One Size **Colour:** Black

# LEISURE & COMMUTE

Now more than ever, the bike is an important part of everyday life. As riding habits are changing and people are looking for more ways to commute, the bike offers an escape from the urban grind and a chance to make the journey to work more of a pleasure than a chore.

The best part is that the bike you use to commute to work can turn into a vehicle for exploration on the weekends or the perfect centrepiece to a family outing. The same bike that you park in the office lock up five days a week is ideal for a ride round the local park with the kids, or just a good way to get out and stretch the legs in the sunshine for a little while.

At Ridgeback we firmly believe that no matter what your budget commuting by bike should be possible. That's why our urban and leisure range starts at just over £300 and all the bikes are built with reliability and function in mind, while looking like something you want to get out and ride every day.



Model: Element



## Comet

**Frame:** 6061 Heat Treated Aluminium **Fork:** Hi Ten Chromoly / Mudguard Eyelets 1-1/8"  
**Drivetrain:** Prowheel A105P(3) / 40t **Hubs:** KT A16F/AY1R / 36h **Rims:** Shining A6N / 36h  
**Brakes:** Promax TX-117 V-Brakes **Tyres:** Vee tire Zilent 700x42c  
**Sizes:** S - M - L - XL - XXL **Colour:** Red



## Comet Open Frame

**Frame:** 6061 Heat Treated Aluminium  
**Fork:** Hi Ten Chromoly / Mudguard Eyelets 1-1/8"  
**Drivetrain:** Prowheel A105P(3) / 40t  
**Hubs:** KT A16F/AY1R / 36h  
**Rims:** Shining A6N / 36h  
**Brakes:** Promax TX-117 V-Brakes  
**Tyres:** Vee tire Zilent 700x42c  
**Sizes:** S - M - L - XL **Colour:** Teal



## Motion

**Frame:** 6061 Heat Treated Aluminium  
**Fork:** Hi Ten Chromoly / Mudguard Eyelets 1-1/8"  
**Drivetrain:** Shimano FC-TY301 / 48x38x28t  
**Hubs:** KT A16F/AY1R / 36h  
**Rims:** A&J AJ-1 / 36h  
**Brakes:** Promax TX-117 V-Brakes  
**Tyres:** Vee tire Zilent 700x42c  
**Sizes:** S - M - L - XL - XXL **Colour:** Bright Red



## Motion Open Frame

**Frame:** 6061 Heat Treated Aluminium  
**Fork:** Hi Ten Chromoly / Mudguard Eyelets 1-1/8"  
**Drivetrain:** Shimano FC-TY301 / 48x38x28t  
**Hubs:** KT A16F/AY1R / 36h  
**Rims:** A&J AJ-1 / 36h  
**Brakes:** Promax TX-117 V-Brakes  
**Tyres:** Vee tire Zilent 700x42c  
**Sizes:** S - M - L - XL **Colour:** White





### Speed

**Frame:** 6061 Heat Treated Aluminium  
**Fork:** Hi Ten Chromoly / Mudguard Eyelets 1-1/8"  
**Drivetrain:** Shimano FC-TY301 / 48x38x28t  
**Hubs:** KT A16F/AY1R / 36h  
**Rims:** A&J AJ-1 / 36h  
**Brakes:** Promax TX-117 V-Brakes  
**Tyres:** Vee tire Zilent 700x42c  
**Sizes:** S - M - L - XL - XXL **Colour:** Copper

### Speed Open Frame

**Frame:** 6061 Heat Treated Aluminium  
**Fork:** Hi Ten Chromoly / Mudguard Eyelets 1-1/8"  
**Drivetrain:** Shimano FC-TY301 / 48x38x28t  
**Hubs:** KT A16F/AY1R / 36h  
**Rims:** A&J AJ-1 / 36h  
**Brakes:** Promax TX-117 V-Brakes  
**Tyres:** Vee tire Zilent 700x42c  
**Sizes:** S - M - L - XL **Colour:** Purple



### Vanteo

**Frame:** 6061 Heat Treated Aluminium **Fork:** Aluminium Disc / Mudguard Eyelets  
**Drivetrain:** Shimano FC-M361 / 48x38x28t **Hubs:** KT T04F/TR8R / 32h **Rims:** Shining DB-31 / 32h  
**Brakes:** Shimano BR-MT200 Hydraulic Disc Brakes **Tyres:** Schwalbe Citizen K-Guard 700x35c  
**Sizes:** S - M - L - XL **Colour:** Silver



### Velocity Open Frame

**Frame:** 6061 Heat Treated Aluminium **Fork:** Hi Ten Chromoly / Mudguard Eyelets 1-1/8"  
**Drivetrain:** Shimano FC-M361 / 48x38x28t **Hubs:** KT A15F/AZER-M10 / 36h **Rims:** Shining MT-25 / 36h  
**Brakes:** Shimano BR-T4000 V-Brakes **Tyres:** Schwalbe Citizen K-Guard 700x40c  
**Sizes:** S - M - L - XL **Colour:** Blue



### Velocity

**Frame:** 6061 Heat Treated Aluminium  
**Fork:** Hi Ten Chromoly / Mudguard Eyelets 1-1/8"  
**Drivetrain:** Shimano FC-M361 / 48x38x28t  
**Hubs:** KT A15F/AZER-M10 / 36h  
**Rims:** Shining MT-25 / 36h  
**Brakes:** Shimano BR-T4000 V-Brakes  
**Tyres:** Schwalbe Citizen K-Guard 700x40c  
**Sizes:** S - M - L - XL - XXL **Colour:** Grey



### Element

**Frame:** 6061 Heat Treated Aluminium  
**Fork:** Aluminium Disc / Mudguard Eyelets  
**Drivetrain:** Shimano FC-T3010 / 48x36x26t  
**Hubs:** KT T04F/TR8R / 32h  
**Rims:** Shining DB-31 / 32h  
**Brakes:** Shimano BR-MT200 Hydraulic Disc Brakes  
**Tyres:** Schwalbe Citizen K-Guard 700x35c  
**Sizes:** S - M - L - XL **Colour:** Blue



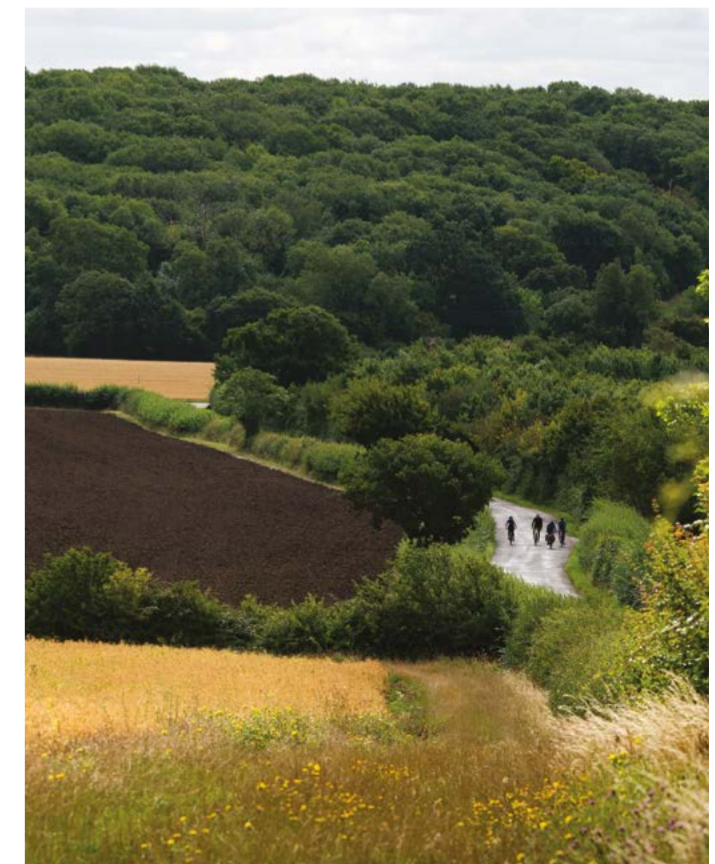
### Supernova EQ

**Frame:** 6061 Heat Treated Aluminium  
**Fork:** Aluminium disc / Mudguard Eyelets  
**Drivetrain:** Samox AF19 / 44t  
**Hubs:** Shimano DH-3D37 / Nexus SG-C6001 8 Speed / 32h  
**Rims:** Shining DB-31 / 32h  
**Brakes:** Shimano BR-MT200 Hydraulic Disc Brakes  
**Tyres:** Schwalbe Little Big Ben Reflex 700x40c  
**Sizes:** S - M - L - XL **Colour:** White



### Element EQ

**Frame:** 6061 Heat Treated Aluminium  
**Fork:** Aluminium disc / Mudguard Eyelets  
**Drivetrain:** Shimano FC-TY501 / 46x30t  
**Hubs:** Shimano DH-3D37 / KT TC7R / 32h  
**Rims:** Shining DB-31 / 32h  
**Brakes:** Shimano BR-MT201 Hydraulic Disc Brakes  
**Tyres:** Schwalbe Little Big Ben Reflex 700x40c  
**Sizes:** S - M - L - XL **Colour:** Grey

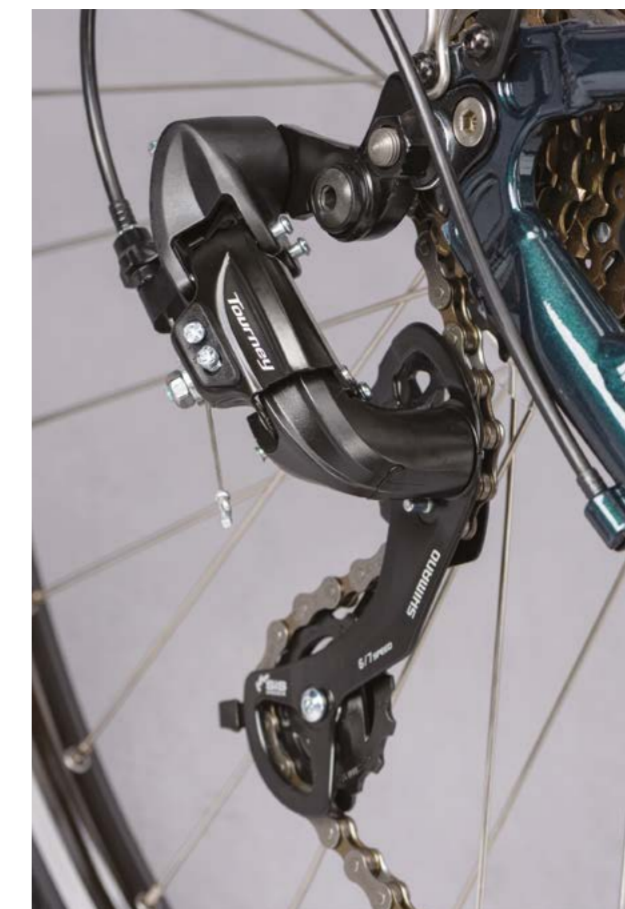






### Storm

**Frame:** 6061 Heat Treated Aluminium  
**Fork:** Suntour NEX HLO 63mm Travel  
**Drivetrain:** Shimano FC-M361 / 48X38X28t  
**Hubs:** KT T04F/TR8R / 32h  
**Rims:** Shining DB-31 / 32h  
**Brakes:** Shimano BR-MT200 Hydraulic Disc Brakes  
**Tyres:** Kenda Flintridge 700x40c  
**Sizes:** S - M - L - XL **Colour:** Dark Blue



### Avenida 6

**Frame:** 6061 Heat Treated Aluminium  
**Fork:** Steel /Mudguard Eyelets  
**Drivetrain:** PRA-115 / 38t / 170mm  
**Hubs:** Joytech JY-753F/JY-754R  
**Rims:** Ryde Rigida ZAC-21SL / 36h  
**Brakes:** Promax TX-107C V-Brakes  
**Tyres:** Kenda Kwick Journey 700x40c  
**Sizes:** S - M - L - XL **Colour:** Green



### Storm W

**Frame:** 6061 Heat Treated Aluminium **Fork:** Suntour NEX HLO 63mm Travel  
**Drivetrain:** Shimano FC-M361 / 48X38X28t **Hubs:** KT T04F/TR8R / 32h  
**Rims:** Shining DB-31 / 32h **Brakes:** Shimano BR-MT200 Hydraulic Disc Brakes **Tyres:** Kenda Flintridge 700x40c  
**Sizes:** S - M - L - XL **Colour:** Bright Blue



### Avenida 21

**Frame:** 6061 Heat Treated Aluminium **Fork:** Steel /Mudguard Eyelets  
**Drivetrain:** Shimano Tourney FC-TX801 / 48x38x28t / 170mm **Hubs:** Shimano DH-C3000-1N/Joytech JY-753DSE / 36h  
**Rims:** Ryde Rigida ZAC-21SL / 36h **Brakes:** Promax TX-107C V-Brakes **Tyres:** Kenda Kwick Journey 700x40c  
**Sizes:** S - M - L - XL **Colour:** Black



## Spread the cost!

You can now enjoy 0% finance on all full priced bikes over £500 when spread over six, ten or twelve months when purchased online through Freewheel.\*

[Freewheel.co.uk/finance](https://www.freewheel.co.uk/finance)



\*Credit is subject to status and minimum spend applies. Freewheel acts as a credit broker and only offers credit products for Secure Trust Bank PLC trading as V12 Retail Finance. Registered in England & Wales 00706712. Registered office: Buckingham House, West Street, Newbury, Berkshire, RG14 1BD, United Kingdom



### Avenida 7

**Frame:** 6061 Heat Treated Aluminium  
**Fork:** Steel /Mudguard Eyelets  
**Drivetrain:** PRA-115 / 38t / 170mm  
**Hubs:** Shimano DH-C3000-1N/SG-C3001-7V / 36h  
**Rims:** Ryde Rigida ZAC-21SL / 36h  
**Brakes:** Promax TX-107C V-Brakes  
**Tyres:** Kenda Kwick Journey 700x40c  
**Sizes:** S - M - L - XL **Colour:** Red

# WORLD SERIES

When you're after a touring bike you want something that's reliable, well-built, strong and ready for anything. Perhaps most importantly, you want something that's ready for adventure right out of the box and that's what we've done with the Ridgeback World Series.

These are bikes that are ready to go from the moment you get them, coming with racks, mudguards and multiple bottle cages/fixing points as standard. When you buy a World Series bike you don't have to spend time figuring out what else you need to get, you can just attach your luggage and go.

They're also designed to give you the best possible riding experience. Triple chainsets across the board offer extremely forgiving gearing so you don't have to go light on luggage, and disc brakes mean you have the stopping power to make sure that even a heavily-laden bike slows down exactly when you want it to.

The four bikes here – Panorama, Expedition, Voyage and Tour – are widely respected in the touring world and with good reason. For 2021 we've done our best to make four classic models even better, ready to take you wherever you want to go.



Model: Panorama



## Panorama

**Frame:** Reynolds 725 Heat Treated Chromoly **Fork:** Chromly Steel  
**Drivetrain:** Shimano FC-T4660 48-36-26t **Hubs:** Jalco DC20/DC22 36h **Rims:** Jalco DM25, 36h  
**Brakes:** TRP Spyre **Tyres:** Schwalbe Marathon GG 700x35c  
**Sizes:** XS - S - M - L - XL **Colour:** Red



# OFF ROAD

We started out as a mountain bike brand back in 1983 and although we have changed a bit, we have never lost our love for off-road riding.

Our five-strong Terrain range is ideal for those who prefer the comfort of wider tyres and front suspension or beginner mountain bikers looking to branch out into more serious off-road adventures. Built around dependable aluminium frames, each Terrain model packs 100mm of travel up front to soak up bigger bumps and small drops and are perfect bikes to accompany the family on any UK cycling adventure.

Being built for the rough stuff also makes Terrain a solid option for cycling around town, particularly if your route takes on several different surfaces. Road, gravel, dirt track, cobbles: The Terrain can take on all terrain. Catchy, right?

At four different price-points, each bike is built to suit different budgets and the Terrain 2 comes in an open/frame option for those that prefer that style of frame. Every bike gets a new paint job for 2021 too. Expect to see these bikes packed on the bike racks of cars up and down the country once again!



## Terrain 4

**Frame:** ALX8 6066/6061-T6 Double-Butted Aluminium  
**Fork:** SR Suntour SF15-XCM - DS 27.5 100mm  
**Drivetrain:** Prowheel TA-CQ68 42/34/24 170mm  
**Hubs:** Joytech D041DSE/D142DSE 32h  
**Rims:** JHT HLQC-GA18  
**Brakes:** Tektro HDM-275  
**Tyres:** Deli 27.5x2.1  
**Sizes:** XS - S - M - L - XL **Colour:** Silver/ Red



## Terrain 3

**Frame:** ALX8 6066/6061-T6 Double-Butted Aluminium  
**Fork:** SR Suntour SF19 XCE28 DS27.5 100mm  
**Drivetrain:** Prowheel TA-CQ68 42/34/24 170mm  
**Hubs:** Joytech D041DSE/D142DSE 32h  
**Rims:** JHT HLQC-GA18  
**Brakes:** Tektro HDM-280  
**Tyres:** Deli 27.5x2.1  
**Sizes:** XS - S - M - L - XL **Colour:** Neon Lime



## Voyage

**Frame:** Reynolds 520 Cro Mo  
**Fork:** Chromly Steel  
**Drivetrain:** Shimano FC3010 48-36-26t  
**Hubs:** Shimano T3000 36h  
**Rims:** Jalco DM23, 36h  
**Brakes:** Tektro 992AG  
**Tyres:** Continental Contact 700x32c  
**Sizes:** XS - S - M - L - XL **Colour:** Green



## Expedition

**Frame:** Reynolds 520 Cro Mo  
**Fork:** Chromly Steel  
**Drivetrain:** Shimano FC-T4010 48-36-26t  
**Hubs:** Shimano M475 36h  
**Rims:** Jalco DM25, 36h  
**Brakes:** Promax DSK-300  
**Tyres:** Schwalbe Marathon GG 26x1.75"  
**Sizes:** XS - S - M - L - XL **Colour:** Dark Blue



## Tour

**Frame:** 6061 Heat Treated Aluminium  
**Fork:** Chromly Steel  
**Drivetrain:** Shimano FC-M311  
**Hubs:** Formula FM21/FM32 36h  
**Rims:** Jalco DM23, 36h  
**Brakes:** Tektro CR-510  
**Tyres:** Continental Contact 700x32c  
**Sizes:** XS - S - M - L - XL **Colour:** Dark Teal



## Terrain 2

**Frame:** ALX8 6066/6061-T6 Double-Butted Aluminium  
**Fork:** SR Suntour SF19 XCE28 DS27.5 100mm  
**Drivetrain:** Prowheel TA-CQ68 42/34/24 170mm  
**Hubs:** Joytech JY-751DSE/F362TSE 32h  
**Rims:** JHT HLQC-02AB  
**Brakes:** Alhonga V-Brake  
**Tyres:** Deli 27.5x2.1  
**Sizes:** XS - S - M - L - XL **Colour:** Blue



## Terrain 2 Open Frame

**Frame:** ALX8 6066/6061-T6 Double-Butted Aluminium  
**Fork:** SR Suntour SF19 XCE28 DS27.5 100mm  
**Drivetrain:** Prowheel TA-CQ68 42/34/24 170mm  
**Hubs:** Joytech JY-751DSE/F362TSE 32h  
**Rims:** JHT HLQC-02AB  
**Brakes:** Alhonga V-Brake  
**Tyres:** Deli 27.5x2.1  
**Sizes:** XS - S - M - L - XL **Colour:** Plum



## Terrain 1

**Frame:** ALX8 6066/6061-T6 Double-Butted Aluminium  
**Fork:** Chromly Steel  
**Drivetrain:** Prowheel TA-CQ68 42/34/24 170mm  
**Hubs:** Joytech JY-751DSE/F362TSE 32h  
**Rims:** JHT HLQC-02AB  
**Brakes:** Tektro HDM-275  
**Tyres:** Deli 27.5x2.1  
**Sizes:** XS - S - M - L - XL **Colour:** Silver/ Black



We've been helping children learn to ride for most of our 40-year history. It fills us with an immense amount of pride to think that we're responsible for introducing so many people to bikes, and for some starting a life-long love affair with pedal power.

The range looks much the same as it has for the last couple of years with the Scoot and Scoot XL our reliable balance bikes to get children started. Once they have mastered the art of balance they move onto the 14" bikes and progress through the range right up to a 26" wheel, by which point they'll be ready to move into an adult's bike.

Our premium Dimension range has been a best-seller for many years and is known for being lightweight and reliable. So much so that they're often handed down through families as they grow. Our MX range is definitely designed with future mountain bikers in mind and are just as durable, with some added features such as front suspension and knobby tyres to take on more varied terrain.

For 2021 the whole range gets treated to a new paint job but our aims remain the same – to get more children on bikes and to fall in love with cycling.



Model: Dimension 20



### Dimension 26

9-13 YEARS

- Frame:** 6061 Heat Treated Aluminium
- Fork:** 6061 Heat Treated Aluminium
- Drivetrain:** Samox SAC-03 / 36t / 160mm
- Hubs:** F: Joytech JY-751DSA / R: Shimano FH-TY500 -7 / 32h
- Rims:** Rigida Cyber 10 / 26 x 1.75" / 32h
- Brakes:** Promax TX-107C V-Brakes
- Tyres:** Vee Speedster 26" x 2.00" Black
- Sizes:** One Size **Colour:** Black or Purple



### Dimension 24

9-13 YEARS

- Frame:** 6061 Heat Treated Aluminium
- Fork:** 6061 Heat Treated Aluminium
- Drivetrain:** Samox SAC-03 / 34t / 152mm
- Hubs:** Joytech JY-753/754 36h / front / rear
- Rims:** Rigida AS-26 / 32h
- Brakes:** F: Joytech JY-751DSA / R: Shimano FH-TY500 / 32h
- Tyres:** Vee Speedster 24" x 2.00" Black
- Sizes:** One Size **Colour:** Red or Lilac



### Dimension 20

6-10 YEARS

**Frame:** 6061 Heat Treated Aluminium  
**Fork:** 6061 Heat Treated Aluminium  
**Drivetrain:** Samox SAC-30D / 32t / 114mm  
**Hubs:** F: Joytech JY-751DSA / R: Shimano FH-TY500 -7 / 32h  
**Rims:** Rigida AS-26 / 32h / 20x1.75"  
**Brakes:** Promax TX-107C V-Brakes  
**Tyres:** Vee Speedster 20" x 2.00" Black  
**Sizes:** One Size **Colour:** Pale Blue or Lime Green



### Dimension 16

3-6 YEARS

**Frame:** 6061 Heat Treated Aluminium  
**Fork:** 6061 Heat Treated Aluminium  
**Drivetrain:** Samox SAC-30D / 26t / 102mm  
**Hubs:** Joytech JY-733/736 16h / front / rear  
**Rims:** LP-50 / Alloy 16h  
**Brakes:** Promax TX-107C V-Brakes  
**Tyres:** Vee Speedster 16" x 2.00" Black  
**Sizes:** One Size **Colour:** Lilac or Green



### Dimension 14

2-5 YEARS

**Frame:** 6061 Heat Treated Aluminium  
**Fork:** 6061 Heat Treated Aluminium  
**Drivetrain:** Samox SAC-30D / 26t / 102mm  
**Hubs:** Joytech JY-A075DSE/JY-A076R/ 16h / front / rear  
**Rims:** LP-01 / 14" x 2490mm / Alloy 16h  
**Brakes:** Promax TX-107C V-Brakes  
**Tyres:** Vee Speedster 14" x 2.00" Black  
**Sizes:** One Size **Colour:** Blue or Mint





### MX26

12+ YEARS

**Frame:** 6061 Heat Treated Aluminium  
**Fork:** Suntour XCT 26"  
**Drivetrain:** SR XCC / 22/32/42t x 170mm  
**Hubs:** Joytech JY-753/754 36h / front / rear  
**Rims:** LA-05 / 26" x 5210mm / Alloy 36h  
**Brakes:** Promax TX-107C V-Brakes  
**Tyres:** Vee VRB-185 / 26 x 2.00"  
**Sizes:** One Size **Colour:** Red or Grey



### MX24

9-13 YEARS

**Frame:** 6061 Heat Treated Aluminium  
**Fork:** Suntour XCT 24  
**Drivetrain:** SR XCC / 42-32-22t / 152mm  
**Hubs:** Joytech JY-753/754 36h / front / rear  
**Rims:** LA-05 / Alloy 36h  
**Brakes:** Promax TX-107C V-Brakes  
**Tyres:** Vee VRB-185 / 24 x 1.95"  
**Sizes:** One Size **Colour:** Green or Black



### Serenity

12+ YEARS

**Frame:** 6061 Heat Treated Aluminium  
**Fork:** Suntour XCT 26"  
**Drivetrain:** SR XCC / 22/32/42t x 170mm  
**Hubs:** Joytech JY-753/754 36h / front / rear  
**Rims:** LA-05 / 26" x 5210mm / Alloy 36h  
**Brakes:** Promax TX-107C V-Brakes  
**Tyres:** Vee VRB-185 / 26 x 2.00"  
**Sizes:** One Size **Colour:** Teal or Silver



### Destiny

9-13 YEARS

**Frame:** 6061 Heat Treated Aluminium  
**Fork:** Suntour XCT 24  
**Drivetrain:** SR XCC / 42-32-22t / 152mm  
**Hubs:** Joytech JY-753/754 36h / front / rear  
**Rims:** LA-05 / Alloy 36h  
**Brakes:** Promax TX-107C V-Brakes  
**Tyres:** Vee VRB-185 / 24 x 1.95"  
**Sizes:** One Size **Colour:** Pink or Purple



### MX20

6-10 YEARS

**Frame:** 6061 Heat Treated Aluminium  
**Fork:** Suntour M3010A  
**Drivetrain:** Steel / 34t / 140mm  
**Hubs:** Joytech JY-433/434 36h / front / rear  
**Rims:** LA-05 / Alloy 36h  
**Brakes:** Promax TX-107C V-Brakes  
**Tyres:** Vee VRB-185 / 20 x 1.95"  
**Sizes:** One Size **Colour:** Yellow or Dark Blue



### MX16

3-6 YEARS

**Frame:** 6061 Heat Treated Aluminium  
**Fork:** Hi ten Steel  
**Drivetrain:** Steel / 32t / 102mm  
**Hubs:** Joytech JY-301/416 28h / front / rear  
**Rims:** LA-07 / Alloy 20h  
**Brakes:** Promax TX-107C V-Brakes  
**Tyres:** Vee VRB-268, 16"x2.00"  
**Sizes:** One Size **Colour:** Green or Dark Blue



### MX14

2-5 YEARS

**Frame:** 6061 Heat Treated Aluminium  
**Fork:** Hi ten Steel  
**Drivetrain:** Steel / 28t / 102mm  
**Hubs:** Joytech JY-301/416 20h / front / rear  
**Rims:** LA-07 / Alloy 20h  
**Brakes:** Promax TX-107C V-Brakes  
**Tyres:** VRB-024, 14"x1.75"  
**Sizes:** One Size **Colour:** Red, Black or Yellow



### Melody

3-6 YEARS

**Frame:** 6061 Heat Treated Aluminium  
**Fork:** Hi ten Steel  
**Drivetrain:** Steel / 32t / 102mm  
**Hubs:** Joytech JY-301/202 28h / front / rear  
**Rims:** LA-07 / Alloy 20h  
**Brakes:** Promax TX-107C V-Brakes  
**Tyres:** Vee VRB 16 x1.75"  
**Sizes:** One Size **Colour:** Lilac or Mint



### Harmony

6-10 YEARS

**Frame:** 6061 Heat Treated Aluminium  
**Fork:** Suntour M3010A  
**Drivetrain:** Steel / 34t / 140mm  
**Hubs:** Joytech JY-433/434 36h / front / rear  
**Rims:** LA-05 / Alloy 36h  
**Brakes:** Promax TX-107C V-Brakes  
**Tyres:** Vee VRB-185 / 20 x 1.95"  
**Sizes:** One Size **Colour:** Pale Lilac or Pink



### Honey

2-5 YEARS

**Frame:** 6061 Heat Treated Aluminium  
**Fork:** Hi ten Steel  
**Drivetrain:** Steel / 28tww / 102mm  
**Hubs:** Joytech JY-301/202 20h / front / rear  
**Rims:** LA-07 / Alloy 20h  
**Brakes:** Promax TX-107C V-Brakes  
**Tyres:** Vee VRB 14 x1.75"  
**Sizes:** One Size **Colour:** Pale Blue or Pink





## Scoot XL

- Frame:** 6061 Heat Treated Aluminium
- Fork:** Hi Ten Steel
- Hubs:** HB-29F / 100mm / 20h
- Rims:** LA-07 / Alloy 20h
- Brakes:** Alloy V-Brake rear
- Tyres:** Vee Tyre Speedster, 14" x 2.00"
- Sizes:** One Size
- Colours:** Green / Red / Pink / White / Blue / Yellow



## Scoot

- Frame:** 6061 Heat Treated Aluminium
- Fork:** Hi Ten Steel
- Hubs:** HB-29F / 100mm / 20h
- Rims:** LA-07 / Alloy 20h
- Brakes:** Alloy V-Brake rear
- Tyres:** Vee Tyre Speedster, 12" x 2.00"
- Sizes:** One Size
- Colours:** Green / Red / Pink / White / Blue / Yellow



# All your cycling needs covered

## Official online stockist for Ridgeback bikes

For thousands of dedicated cycling products available online visit Freewheel. Freewheel is a cycling website representing a nationwide network of independent bike shops, giving you access to all the latest kit from the biggest brands in cycling as well as expert advice, knowledge, and aftersales service. Simply choose to Click & Collect or get it delivered straight to your door. Either way every purchase benefits a local bike shop! It really is your local bike shop online. [Freewheel.co.uk](http://Freewheel.co.uk)



**15% OFF**  
Your first order  
Just sign up for our newsletter

