

2755.

Girard St.

400

LEVEL

F.B. 275

Table showing the difference of latitude and departure in running 80 chains at any course from 1 to 60 minutes.

MINUTES	LKS.	MINUTES	LKS.	MINUTES	LKS.
1	2 1/3	21	49	41	95 2/3
2	4 2/3	22	51 1/3	42	98
3	7	23	53 2/3	43	100 1/3
4	9 1/3	24	56	44	102 2/3
5	11 2/3	25	58 1/3	45	105
6	14	26	60 2/3	46	107 1/3
7	16 1/3	27	63	47	109 2/3
8	18 2/3	28	65 1/3	48	112
9	21	29	67 2/3	49	114 1/3
10	23 1/3	30	70	50	116 2/3
11	25 2/3	31	72 1/3	51	119
12	28	32	74 2/3	52	121 1/3
13	30 1/3	33	77	53	123 2/3
14	32 2/3	34	79 1/3	54	126
15	35	35	81 2/3	55	128 1/3
16	37 1/3	36	84	56	130 2/3
17	39 2/3	37	86 1/3	57	133
18	42	38	88 2/3	58	135 1/3
19	44 1/3	39	91	59	137 2/3
20	46 2/3	40	93 1/3	60	140

Return to City Engineers Office  
City Hall, San Diego, Cal.  
TABLE FOR RUNNING ON SLOPES.

In the following table the first column shows the angle, the second the number of links to be added to a chain on the slopes, to make one chain, horizontal measurement.

Angle	COR. IN LINKS	Angle	COR. IN LINKS	Angle	COR. IN LINKS	Angle	COR. IN LINKS
0		0		0		0	
4	0.24	11	1.88	18	5.14	25	10.54
5	0.38	12	2.24	19	5.76	26	11.26
6	0.55	13	2.63	20	6.42	27	12.24
7	0.76	14	3.06	21	7.11	28	13.37
8	0.98	15	3.53	22	7.85	29	14.34
9	1.24	16	4.02	23	8.64	30	15.47
10	1.55	17	4.56	24	9.47	35	22.07

201 717 (5.85)  
100  
170.114.38  
170 127.28  
127.28  
2.38  
127.90  
3  
7.69  
19  
132.59  
20  
1.51  
115.89  
6167 12.73  
103.72  
1.44  
104.56  
10.89  
93.88  
2.68  
93.68  
4.64  
98.26  
10 Return to City Engineers Office  
City Hall, San Diego, Cal.  
109  
4.33/0.3.82  
105.46 6.92  
396/110.742  
109.42 5.21  
7.53/85.53  
101.89 4.28  
109.81  
4.4  
103.37  
J.P. 101.89  
1.95  
103.84

Table

MINUS

1...  
2...  
3...  
4...  
5...  
6...  
7...  
8...  
9...  
10...  
11...  
12...  
13...  
14...  
15...  
16...  
17...  
18...  
19...  
20...

In th

Angle

0  
4  
5  
6  
7  
8  
9  
10

493.8  $\odot$  line  
 478.7 W  
 15.1  
 6.84  
 92.01  
 98.95  
 7.99  
 90.86  
 0.84  
 91.70  
 11.70  
 80.00  
 0.82  
 80.82  
 12.45  
 27  
 68.37  
 0.10  
 68.47  
 12.12  
 56.35  
 1.07  
 57.42  
 11.55  
 45.87  
 0.18  
 46.05  
 11.35  
 34.70

14) 3.9 (2.8  
 28  
 110  
 112  
 34  
 33  
 67  
 0.80  
 35.50  
 5.59  
 29.91 \* J.P.  
 7.02  
 36.93  
 0.71  
 36.22 J.P.  
 13.03  
 49.25  
 11.89  
 \*37.36 J.P.  
 0.24 10.21  
 49.01 47.57  
 5.55  
 54.56 \* 46.55 J.P.  
 6.99 12.96  
 44.35 59.51  
 0.19  
 59.32  
 12.21  
 71.53

71.53  
 0.54  
 70.99  
 944  
 80.43  
 6.45  
 59.32  
 65.77  
 11.25  
 54.49  
 3.82  
 58.31  
 12.45  
 70.99  
 83.44  
 1.10  
 82.34  
 11.30  
 93.64  
 0.13  
 93.51  
 12.35  
 105.86  
 0.68  
 105.18  
 10.83  
 116.01  
 2.59  
 113.42

113.56  
 160  
 85  
 200  
 265  
 200  
 310  
 90  
 140  
 135  
 80  
 35  
 87  
 1542  
 201  
 1341

POSTED

Lapolla Park  
Dec. 20 1905

Abilds  
Brooks  
Harkin

Cross Section Girard Street  
16' sidewalks

400' So Pearl

W. line H.I. 132.59 2.6 130.0

2.4 130.2

2.5 130.1

C 2.2 130.4

2.3 130.3

2.4 130.2

E. line 2.2 130.4

375' So.

E. line 3.5 129.1

3.5 129.1

3.1 129.5

C 2.7 129.9

3.0 129.6

3.4 129.2

W. line 3.5 129.1

350' So.

W. line

4.5 128.1

4.5 128.1

4.2 128.4

C

3.9 128.7

4.2 128.4

4.5 128.1

E line

4.6 128.0

325' So.

E line

5.5 127.1

5.3 127.3

5.2 127.4

C

5.4 127.2

5.6 127.0

5.7 126.9

W. line

5.6 127.0

300' So.

W. line

6.7 125.9

6.6 126.0

6.5 126.1

C

6.3 126.3

6.2 126.4

6.2 126.4

E line

6.3 126.3

275' So.

E line H.J. 127.28

2.0 125.3

2.0 125.3

2.2 125.1

C

2.3 125.0

1.9 125.4

2.3 125.0

W. line

2.3 125.0

250' So.

White	3.4	123.9
	3.3	124.0
	3.1	124.2
C	3.1	124.2
	2.9	124.4
	2.8	124.5
Elms	3.0	124.3

225' So.

Elms	3.8	123.5
	3.7	123.6
	3.9	123.4
C	4.3	123.0
	4.5	122.8
	4.3	123.0
White	4.4	122.9

200' So.

White	5.2	122.1
	5.3	122.0
	5.2	122.1
C	5.1	122.2
	4.9	122.4
	4.9	122.4
Elms	5.0	122.3

175' So.

Elms	5.7	121.6
	6.0	121.3
	6.1	121.2
C	6.1	121.2
	6.1	121.2
	6.5	120.8
White	6.4	120.9

150' So,

White	7.3	120.0
	7.3	120.0
	6.6	120.7
C	7.1	120.2
	7.0	120.3
	7.0	120.3
E line	6.6	120.7

125' So,

E line	7.4	119.9
	7.7	119.6
	8.0	119.3
C	8.3	119.0
	8.3	119.0
	8.3	119.0
White	8.7	118.6

100' So,

White	9.3	118.0
	9.7	117.6
	9.0	118.3
C	9.1	118.2
	9.0	118.3
	8.7	118.6
E line	8.4	118.9

75' So,

E line	9.5	117.8
	9.8	117.5
	9.8	117.5
C	10.1	117.2
	10.3	117.0
	10.3	117.0
White	11.2	116.1

	50' So.	
W. line	11.4	115.9
	11.8	115.5
	11.2	116.1
C	10.9	116.4
	10.7	116.6
	10.6	116.7
E line	10.2	117.1
	25' So.	
E line	11.3	116.0
	11.5	115.8
	11.3	116.0
C	11.8	115.5
	12.3	115.0
	12.4	114.9
W. line	12.2	115.1

	South line Pearl St.	
W. line	12.9	114.4
	12.9	114.4
	12.7	114.6
C	13.0	114.3
	12.5	114.8
	12.2	115.1
E line	12.1	115.2
	So. Ch.	
E line	H.I. 115.89	1.2 114.7
		1.2 114.7
		2.0 113.9
C		1.8 114.1
		1.9 114.0
		2.0 113.9
W. line		2.0 113.9



	So 1/4	
W. line	2.6	113.3
	2.1	113.8
	2.3	113.6
C	1.8	114.1
	2.4	113.5
	1.8	114.1
E line	1.6	114.3
	center	
E line	2.3	113.6
	2.6	113.3
	2.5	113.4
C	2.4	113.5
	2.8	113.1
	2.7	113.2
W. line	3.0	112.9

	N. 1/4	
W. line	3.6	112.3
	3.6	112.3
	3.1	112.8
C	2.8	113.1
	2.6	113.3
	2.8	113.1
E line	2.5	113.4
	N. cb.	
E line	3.2	112.7
	3.1	112.8
	3.4	112.5
C	3.3	112.6
	3.9	112.0
	3.8	112.1
W. line	3.9	112.0

North line Pearl

Wline	4.5	111.4
	4.3	111.6
	4.1	111.8
C	3.7	112.2
	3.8	112.1
	3.4	112.5
Eline	3.4	112.5
25' North		
Eline	3.9	112.0
	4.1	111.8
	4.5	111.4
C	4.4	111.5
	5.0	110.9
	5.0	110.9
Wline	5.1	110.8

50' N.

Wline	6.1	109.8
	5.7	110.2
	5.8	110.1
C	5.3	110.6
	5.2	110.7
	4.9	111.0
Eline	4.9	111.0
75' N.		
Eline	5.5	110.4
	5.7	110.2
	6.3	109.6
C	6.2	109.7
	6.5	109.4
	6.6	109.3
Wline	6.8	109.1

100' N

White	7.6	108.3
	7.5	108.4
	7.2	108.7
C	6.7	109.2
	6.9	109.0
	6.4	109.5
Elms	6.6	109.3

125' N

Elms	7.3	108.6
	7.5	108.4
	7.8	108.1
C	7.6	108.3
	8.3	107.6
	8.5	107.4
White	8.4	107.5

150' N

White	9.0	106.9
	9.2	106.7
	8.9	107.0
C	8.7	107.2
	8.6	107.3
	8.6	107.3
Elms	8.5	107.4

175' N

Elms	9.8	106.1
	9.9	106.0
	9.9	106.0
C	9.7	106.2
	10.0	105.9
	10.1	105.8
White	9.5	106.4

	200'	N.	
White	11.0	104.9	
	11.0	104.9	
	11.0	104.9	
C	10.9	105.9	
	11.0	104.9	
	11.2	104.7	
E. line	11.0	104.9	
	225'	N.	
E. line	12.0	103.9	
	12.0	103.9	
	12.0	103.4	
C	12.4	103.5	
	12.2	103.7	
	12.0	103.9	
White	11.7	104.2	

	250'	N.	
White	12.8	103.1	
	13.3	102.6	
	13.4	102.5	
C	13.4	102.5	
	13.5	102.4	
	13.0	102.9	
E. line	13.1	102.8	
	275'	N.	
E. line H.I.	<u>104.56</u>	2.6	102.0
	2.8	101.8	
	3.0	101.6	
C	3.1	101.5	
	2.8	101.8	
	3.3	101.3	
White	2.7	101.9	

300' M.

White

3.7 100.9

4.1 100.5

4.3 100.3

C

4.2 100.4

3.6 101.0

3.4 101.2

Eline

3.2 101.4

325' M

Eline

4.1 100.5

4.4 100.2

4.7 99.9

C

4.9 99.7

5.5 99.1

5.7 99.5

White

5.4 99.2

350' M

White

7.5 97.1

6.4 98.2

6.2 98.4

C

5.7 98.9

5.7 98.9

5.4 99.2

Eline

5.0 99.6

375' M

Eline

5.9 98.7

7.2 97.4

7.2 97.4

C

6.9 97.7

7.2 97.4

8.4 96.2

White

10.0 94.6

400' N

W. line	10.3	94.3
	8.9	95.7
	8.0	96.6
C	8.0	96.6
	8.0	96.6
	7.8	96.8
E. line	6.6	98.0

425' N

E. line	7.6	97.0
	7.9	96.7
	8.2	96.4
C	8.3	96.3
	9.1	95.5
	9.6	95.0
W. line	10.5	94.1

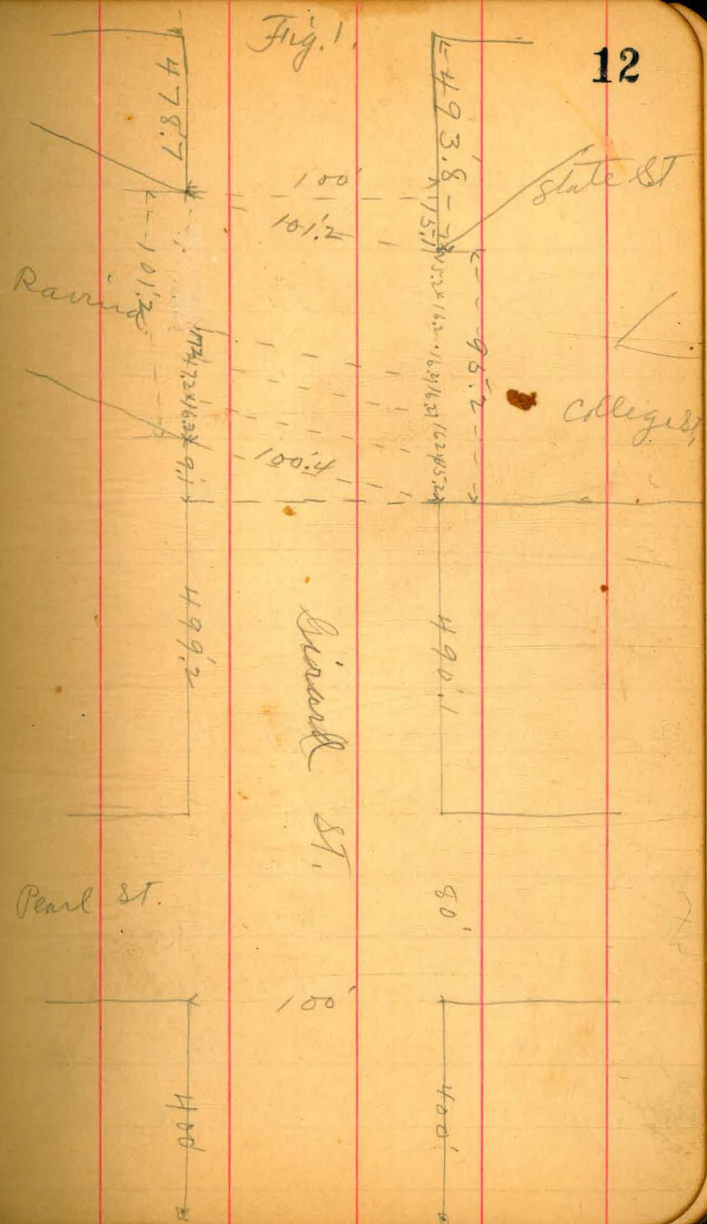
450' N

W. line	10.8	93.8
	10.3	94.3
	9.3	95.3
C	8.8	95.8
	8.6	96.0
	8.1	96.5
E. line	7.7	96.9

475' N

E. line	8.0	96.6
	8.7	95.9
	9.2	95.4
C	9.1	95.5
	9.9	94.7
	10.1	94.5
W. line	10.5	94.1

	490.6	91.
White	10.8	93.8
	10.4	94.2
	10.0	94.6
C	9.6	95.0
	9.5	95.1
	8.9	95.7
Elms	8.4	96.2
	Saline Ravine	
Elms	8.4	96.2
	9.3	95.3
	9.9	94.7
C	9.7	94.9
	10.2	94.4
	10.6	94.0
White	10.8	93.8



H.I. 104.6

	So. cb.	
White	11.1	93.5
	11.1	93.5
	10.5	94.1
C	10.2	94.4
	10.1	94.5
	9.8	94.8
Elms	8.8	95.8
	So. 1/4	
Elms	9.9	94.7
	10.1	94.5
	10.5	94.1
C	10.6	94.0
	11.0	93.6
	11.5	93.1
White	12.0	92.6

H.I. 104.6

13

	Center	
White	12.6	92.0
	12.5	92.1
	11.7	92.9
C	11.9	92.7
	12.0	92.6
	10.9	93.7
Elms	10.3	94.3
	N. 1/4	
Elms	11.6	93.0
	12.4	92.2
	12.7	91.9
C	13.0	91.6
	12.9	91.7
	13.2	91.4
White	13.2	91.4



H.I.  $96.36 = 96.4$

71. cb.

White	6.1	90.3
	6.1	90.3
	5.6	90.8
C	5.3	91.1
	5.0	91.4
	4.8	91.6
E line	4.2	92.2
North line Ravina		
E line	5.1	91.3
	5.2	91.2
	5.3	91.1
C	5.4	91.0
	5.7	90.7
	7.2	89.2
	8.7	87.7
cb + 6'	7.0	89.4
White		

Dec. 21, 1905.

H.I.  $98.28 = 98.3$

14

478.7 So. Centre St.

White	8.9	89.4
+10'	10.6	87.7
cb	10.5	87.4
	8.1	90.2
C	7.4	90.9
	7.3	91.0
	7.5	90.8
E line	7.0	91.3
475' So.		
E line	7.1	91.2
	7.5	90.8
	7.0	91.3
C	7.3	91.0
C + 13'	8.1	90.2
14	10.7	87.6
	10.7	87.6
	10.4	87.9
C + 13'	9.2	89.1
White		

HI 98.3

	450' So.	
W line	10.6	87.7
+7'	9.0	89.3
cb	8.5	89.8
	7.5	90.8
C	6.4	91.9
	5.8	92.5
	5.5	92.8
E line	5.5	92.8
	425' So.	
E line	1.9	96.4
	2.8	95.5
	4.4	93.9
C	4.4	93.9
	5.6	92.7
	6.9	91.4
cb+3'	5.7	92.6
W line	6.0	92.3

HI 98.3

15

	400' So.	
W line	4.2	94.1
	4.2	94.1
	4.2	94.1
C	3.0	95.3
	3.2	95.1
	2.9	95.4
cb+2'	2.1	96.2
E line	1.1	97.2
	375' So.	
E line	0.5	97.8
	1.2	97.1
	2.0	96.3
C	2.3	96.0
	3.0	95.3
	3.3	95.0
W line	3.4	94.9

H.I. 98.3

350' So.

w. line	2.4	95.9
	2.4	95.9
	1.7	96.6
c	1.2	97.1
	0.9	97.4
	0.0	98.3

E. line	H.I. 105.13	6.4	98.7
---------	-------------	-----	------

325' So.

E. line	5.4	99.7
	5.8	99.3
	6.7	98.4
c	7.3	97.8
	7.4	97.7
	8.1	97.0
w. line	8.3	96.8

H.I. 105.1

16

300' So.

w. line	6.8	98.3
	6.4	98.7
	6.1	99.0
c	6.5	98.6
	5.5	99.6
1/4 + 9'	5.9	99.2
	4.7	100.4
E. line	4.3	100.8

275' So.

E. line	3.6	101.5
	4.1	101.0
	4.4	100.7
c	5.3	99.8
	5.7	99.4
	5.8	99.3
w. line	6.1	99.0

H.I. 105.1

250' So.

w. line	5.4	99.7
	5.1	100.1
	5.1	100.0
c	4.6	100.5
	3.4	101.7
	3.0	102.1
e line	2.8	102.3

225' So.

e line	2.3	102.8
	3.2	101.9
	3.5	101.6
c	3.9	101.2
	4.7	100.4
	4.6	100.5
w. line	5.0	100.1

H.I. 105.1

17

200' So.

w. line	4.4	100.7
	4.1	101.1
	3.7	101.4
c	3.5	101.6
	3.1	102.0
	2.4	102.7
e line	1.8	103.3

175' So.

e line	1.5	103.6
	1.8	103.3
	2.5	102.6
c	3.1	102.0
	3.3	101.8
	3.5	101.6
w. line	4.0	101.1

HI 105.1

100' So.

w. line	3.5	101.6
	3.3	101.8
	3.4	101.7
c	2.5	102.6
	1.9	103.2
	1.4	103.7
E. line	1.1	104.0

125' So.

E. line	0.5	104.6
cb	1.1	104.0
	1.8	103.3
c	2.0	103.1
	3.0	102.1
	2.5	102.6
w. line	3.1	102.0

HI, 105.1

18

100' So.

w. line	2.5	102.6
	2.2	102.9
	2.2	102.9
c	1.4	103.7
	1.2	103.9
	0.6	104.5
E. line	0.2	104.9

75' So.

E. line	H.I. 110.74	5.3	105.4
		5.9	104.8
		6.4	104.3
c		6.6	104.1
		7.0	103.7
		7.3	103.4
w. line		7.7	103.0

H.I. 110.7

50' So.

W. line	7.0	103.7
	7.3	103.4
	6.9	103.8
e	6.3	104.4
	6.1	104.6
	5.5	105.2
E. line	5.0	105.7
	25' So.	
E. line	4.6	106.1
	5.1	105.6
	5.7	105.0
c	6.0	104.7
	6.9	103.8
	6.9	103.8
W. line	7.0	103.7

H.I. 110.7

19

South line centre street

W. line	6.9	103.8
	6.5	104.2
	6.4	104.3
e	5.1	105.6
	5.4	105.3
	4.8	105.9
E. line	4.5	106.2
	So. Cb	
E. line	4.2	106.5
	4.8	105.9
	5.3	105.4
c	5.0	105.7
	6.1	104.6
	6.4	104.3
W. line	6.6	104.1

HI 110.7

So. 1/4

w. line	6.6	104.1
	6.1	104.6
	6.2	104.5
c	5.2	105.5
	5.0	105.7
	4.7	106.0
E. line	4.3	106.4
	center	
E. line	3.7	107.0
	4.4	106.3
	4.7	106.0
c	3.2	105.5
	5.9	104.8
	6.0	104.7
w. line	6.5	104.2

HI 110.7

20

N. 1/4

w. line	6.5	104.2
	6.1	104.6
	6.0	104.7
c	5.2	105.5
	4.9	105.8
	4.6	106.1
E. line	4.1	106.6
	N. Cb.	
E. line	4.0	106.7
	4.6	106.1
	4.8	105.9
c	5.2	105.5
	5.8	104.9
	5.8	104.9
w. line	6.3	104.4

18

H.I. 110.7

North line Centre

W. line

6.2 104.5

5.7 105.0

5.4 105.3

c

5.0 105.7

4.7 106.0

4.3 106.4

E. line

3.9 106.8

25' N.

E. line

3.6 107.1

4.1 106.6

4.3 106.4

c

4.9 105.8

5.2 105.5

5.3 105.4

W. line

5.8 104.9

H.I. 110.7

21

50' N.

W. line

5.6 105.1

5.0 105.7

4.8 105.9

c

4.8 105.9

4.1 106.6

3.6 107.1

E. line

3.4 107.3

75' N.

E. line

3.3 107.4

3.7 107.0

4.1 106.6

c

4.8 105.9

4.9 105.8

5.2 105.5

W. line

5.5 105.2



18

HI 110.7

100' N.

W. line	5.0	105.7
	4.7	106.0
	4.6	106.1
C	4.3	106.4
	4.1	106.6
	3.4	107.3
E line	3.1	107.6

125' N.

E line	2.9	107.8
	3.4	107.3
	4.0	106.7
C	3.8	106.9
	4.4	106.3
	4.4	106.3
W. line	5.0	105.7

HI 110.7

22

150' N.

W. line	4.7	106.0
	4.4	106.3
	4.0	106.7
C	3.4	107.3
	3.6	107.1
	3.0	107.7
E line	2.6	108.1

175' N.

E. line	2.5	108.2
	2.8	107.9
	3.3	107.4
C	3.4	107.3
	3.9	106.8
	4.1	106.6
W. line	4.4	106.3

HI 110.7

200' N.

W. line 4.3 106.4

4.1 106.6

3.7 107.0

C 2.8 107.9

2.8 107.9

3.0 107.7

E line 2.5 108.2

225' N.

E line 2.1 108.6

2.8 107.9

2.7 108.0

C 2.9 107.8

3.5 107.2

3.8 106.9

W. line 4.1 106.6

HI 110.7

250' N.

W. line 3.8 106.9

3.6 107.1

3.3 107.4

C 2.9 107.8

2.6 108.1

2.3 108.4

E line 1.9 108.8

275' N.

E line 2.2 108.5

2.7 108.0

2.7 108.0

C 2.8 107.9

3.4 107.3

3.6 107.1

W. line 4.0 106.7

H.I. 110.7

300' N.

W. line	3.9	106.8
	3.7	107.0
	3.4	107.3
c	3.0	107.7
	3.1	107.6
	2.6	108.1
E line	2.3	108.4

325' N

E line	2.5	108.2
	2.8	107.9
	3.1	107.6
c	3.2	107.5
	3.7	107.0
	3.8	106.9
W. line	3.9	106.8

H.I. 110.7

24

350' N

W. line	4.2	106.5
	4.0	106.7
	3.6	107.1
c	3.4	107.3
	3.2	107.5
	2.6	108.1
E line	2.6	108.1

375' N

E line	2.8	107.9
	3.2	107.5
	3.5	107.2
c	3.6	107.1
	4.1	106.6
	4.3	106.4
W. line	4.4	106.3

H.I. 110.7

400' M.

White	4.5	106.2
	4.2	106.5
	3.8	106.9
c	3.7	107.0
	3.7	107.0
	2.9	107.8
E line	2.5	108.2

425' M.

E line	3.1	107.6
	3.4	107.3
	3.8	106.9
c	4.0	106.7
	4.2	106.5
	4.3	106.4
White	4.8	105.9

H.I. 110.7

25

450' M.

White	5.0	105.7
	4.7	106.0
	4.3	106.4
c	4.2	106.5
	4.0	106.7
	3.3	107.4
E line	3.1	107.6

475' M.

E line	3.1	107.6
	3.4	107.3
	4.1	106.6
c	4.1	106.6
	4.5	106.2
	4.7	106.0
White	5.2	105.5

28, H.I. 109.82

South line Connecticut.

W. line	4.4	105.4
	4.1	105.7
	3.7	106.1
c	3.4	106.4
	3.3	106.5
	3.0	106.8
E line	2.7	107.1

So. cb.

E line	2.9	106.9
	3.0	106.8
	3.5	106.3
c	3.3	106.5
	3.5	106.3
	4.3	105.5
W. line	4.4	105.4

H.I. 109.8

26

So. 1/4

W. line	4.6	105.2
	4.2	105.6
	3.9	105.9
c	3.6	106.2
	3.5	106.3
	2.8	107.0
E line	2.6	107.2

Center

E line	2.5	107.3
	2.7	107.1
	3.5	106.3
c	3.7	106.1
	4.0	105.8
	4.4	105.4
W. line	4.7	105.1

118

H.I. 109.8

N. 1/4

W. line	4.9	104.9
	4.5	105.3
	4.3	105.5
C	3.7	106.1
	3.7	106.1
	3.4	106.4
E line	3.0	106.8
	N. C6	
E line	3.2	106.6
	3.4	106.4
	3.9	105.9
C	3.8	106.0
	4.5	105.3
	4.7	105.1
W. line	4.9	104.9

H.I. 109.8

27

North line Connecticut

W. line	5.1	104.7
	4.7	105.1
	4.6	105.2
C	3.9	105.9
	3.9	105.9
	3.4	106.4
E line	3.3	106.5
	25' N.	
E line	3.2	106.6
	3.6	106.2
	4.1	105.7
C	4.2	105.6
	4.7	105.1
	4.7	105.1
W. line	5.1	104.7

HI 109.8

50' N.

w. line	5.4	104.4
	4.9	104.9
	4.8	105.0
c	4.5	105.3
	4.3	105.5
	3.8	106.0
E line	3.3	106.5

75' N.

E line	3.3	106.5
	3.7	106.1
	4.3	105.5
c	4.4	105.4
	5.0	104.8
	5.2	104.6
w. line	5.5	104.3

HI 109.8

28

100' N.

w. line	5.4	104.4
	5.2	104.6
	5.0	104.8
c	4.3	105.5
	4.4	105.4
	3.8	106.0
E line	3.3	106.5

125' N.

E line	3.2	106.6
	3.9	105.9
	4.4	105.4
c	4.5	105.3
	5.2	104.6
	5.1	104.7
w. line	5.5	104.3

H.I. 109.8

150' M.

W. line	5.7	104.1
	5.3	104.5
	5.1	104.7
C	4.6	105.2
	4.3	105.5
	3.6	106.2
E line	3.3	106.5

175' M.

E line	3.3	106.5
	3.7	106.1
	4.4	105.4
C	4.6	105.2
	5.1	104.7
	5.4	104.4
W. line	5.9	103.9

H.I. 109.42

200' M.

W. line	5.6	103.8
	5.0	104.4
	4.9	104.5
C	4.4	105.0
	4.1	105.3
	3.3	106.1
E line	2.9	106.5

225' M.

E line	2.9	106.5
	3.3	106.1
	4.0	105.4
C	4.3	105.1
	4.7	104.7
	5.0	104.4
W. line	5.5	103.9



H.I. 109.4

250' N

w. line	5.5	103.9
	5.1	104.3
	4.7	104.7
c	4.3	105.1
	4.0	105.4
	3.2	106.2
E. line	2.7	106.7

275' N.

E. line	2.9	106.5
	3.5	105.9
	4.1	105.3
c	4.5	104.9
	5.0	104.4
	5.2	104.2
w. line	5.4	104.0

H.I. 109.4

30

300' N

w. line	5.1	104.3
	5.2	104.2
	5.1	104.3
c	4.6	104.8
	4.3	105.1
	3.5	105.9
E. line	3.3	106.1

325' N.

E. line	3.5	105.9
	3.9	105.5
	4.4	105.0
c	4.6	104.8
	5.1	104.3
	5.2	104.2
w. line	5.2	104.2

H.I. 109.4

350' N

W. line	5.5	103.9
	5.4	104.0
	5.0	104.4
C	4.6	104.8
	4.5	104.9
	4.0	105.4
E. line	3.8	105.6

375' N

E. line	4.0	105.4
	4.2	105.2
	4.8	104.6
C	4.8	104.6
	5.1	104.3
	5.2	104.2
W. line	5.5	103.9

H.I. = 109.4

31

400' N

W. line	5.8	103.6
	5.3	104.1
	5.2	104.2
C	5.0	104.4
	4.9	104.5
	4.3	105.1
E. line	4.4	105.0

425' N

E. line	4.5	104.9
	4.8	104.6
	5.2	104.2
C	5.2	104.2
	5.2	104.2
	5.5	103.9
W. line	5.9	103.5



38

H.I. = 103.8

So. 1/4

W. line	3.0	100.8
	2.7	101.1
	2.4	101.4
c	2.4	101.4
	2.0	101.8
	1.4	102.4
E. line	1.5	102.3
	Center	
E. line	1.7	102.1
	1.9	101.9
	2.6	101.2
c	2.9	100.9
	3.0	100.8
	3.3	100.5
W. line	3.7	100.1

H.I. = 103.8

33

N. 1/4

W. line	4.1	99.7
	3.6	100.2
	3.6	100.2
c	3.3	100.5
	3.1	100.7
	2.5	101.3
E. line	2.3	101.5
	N. cb	
E. line	2.7	101.1
	3.2	100.6
	3.6	100.2
c	3.7	100.1
	3.9	99.9
	4.0	99.8
W. line	4.4	99.4

HI = 103.8

North line Wall Street

W. line	5.2	98.6
	4.7	99.1
	4.1	99.7
C	4.1	99.7
	4.0	99.8
	3.4	100.4
E. line	3.0	100.8
	25' N.	
E. line	3.8	100.0
	4.1	99.7
	4.6	99.2
C	4.8	99.0
	5.1	98.7
	5.5	98.3
W. line	5.3	98.5

HI = 103.8

34

50' N.

W. line	5.8	98.0
	6.9	96.9
	5.7	98.1
C	5.5	98.3
	5.3	98.5
	4.4	99.4
E. line	4.0	99.8
	75' N.	
E. line	4.5	99.3
	5.2	98.6
	5.7	98.1
C	5.9	97.9
	6.3	97.5
	6.8	97.0
W. line	7.2	96.6

HI = 103.8

100' N

W. line	7.8	96.0
	7.3	96.5
	7.1	96.7
C	6.6	97.2
	6.4	97.4
	5.5	98.3
E. line	5.0	98.8

125' N

E. line	5.8	98.0
	6.4	97.4
	6.8	97.0
C	7.3	96.5
	7.7	96.1
	7.9	95.9
W. line	8.3	95.5

HI = 103.8

150' N

W. line	9.0	94.8
	8.5	95.3
	8.3	95.5
C	8.0	95.8
	7.5	96.3
	7.0	96.8
E. line	6.6	97.2

175' N

E. line	7.4	96.4
	7.8	96.0
	8.2	95.6
C	8.5	95.3
	9.0	94.8
	9.4	94.4
W. line	9.5	94.3

35

H.L. 103.84

189.7 M

W. line 10.0 93.8

9.7 94.1

9.3 94.5

c

8.8 95.0

8.3 95.5

7.8 96.0

E. line

7.9 95.9

So. line Prospect.

E. line 8.1 95.7

8.6 95.2

8.9 94.9

c

9.0 94.8

9.3 94.5

9.7 94.1

W. line

9.9 93.9

Fig 2.

Wall 80'

Grind

Prospect Street

226'

36.3'

100'

106'

189.7'

500'

500'

80'

189.7'

100'

106'

Prospect Street

Dec. 27, 1905

H.I. 91.70

North line Prospect

W. line	10.0	81.7
	11.2	80.5
	11.1	80.6
1/2 + 3'	9.6	82.1
C	8.8	82.9
	6.0	85.7
	3.6	88.1

E. line

0.84 90.86

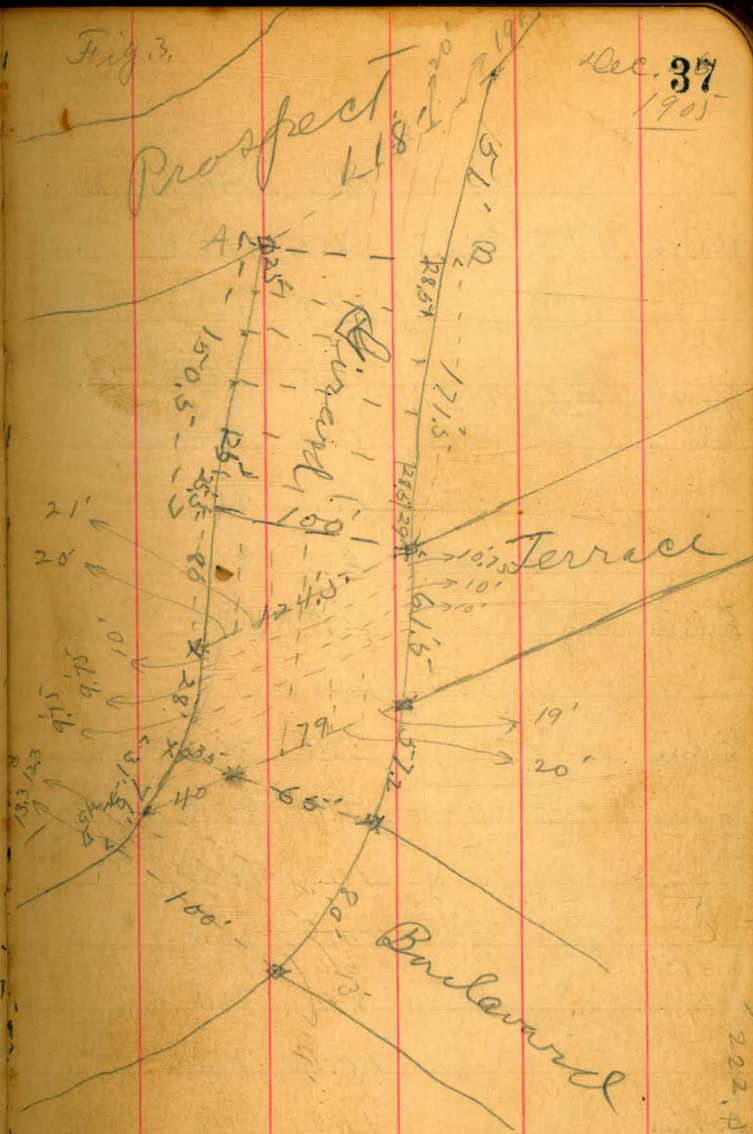
J.P.

Section on A B Fig. 3

E. line	0.84	90.9
	4.1	87.6
	6.9	84.8
C	10.0	81.7
C + 10'	12.0	79.7
	14.3	77.4
	15.3	76.4
W. line	15.8	75.9

Fig. 3

Dec. 31  
1905





		25'	No. of	Point A
wline	H.I. 80.82	8.2		72.6
		7.5		73.3
		6.6		74.2
1/4 + 9'	H.I. 91.70	14.7		77.0
c		13.2		78.5
		10.1		81.6
		6.5		85.2
Eline		2.8		88.9
		50'	No.	
Eline		5.6		86.1
		9.1		82.6
		12.4		79.3
c	H.I. 80.82	4.5		76.3
c + 12'		6.6		74.2
1/4		8.9		71.9
		10.1		70.7
wline		11.0		69.8

		75'	No.
wline		13.1	67.7
		12.6	68.2
cb + 15'		11.7	69.1
1/4		10.0	70.8
c		7.1	73.7
		4.3	76.5
		2.1	78.7
Eline		-0.5	81.3
		100'	No.
Eline		1.0	79.8
		3.6	77.2
		6.4	74.4
c		9.5	71.3
1/4		11.7	69.1
1/4 + 6'		12.2	68.6
	H.I. 69.47	12.8	65.7
wline		3.1	65.4

		125'	no.	
W. line	H.I.	68.47	5.9	62.6
			5.4	63.1
c+11'	H.I.	80.82	15.8	65.0
			15.1	65.7
c			12.6	68.2
			10.0	70.8
			6.9	73.9
E. line			3.4	77.4
		150'.5	no. point A,	
E. line			7.8	73.0
			11.2	69.6
			14.6	66.2
c	H.I.	68.47	3.5	65.0
			5.7	62.8
1/4+5'			7.3	61.2
			8.2	60.3
W. line			9.0	59.5

		So. line Terrace	
W. line		9.0	59.5
		9.3	59.2
		10.2	58.3
1/4+2'		9.0	59.5
c		9.6	58.9
		9.7	58.8
		9.6	58.9
E. line		9.4	59.1
		So. cb.	
E. line		11.0	57.5
		11.3	57.2
		10.6	57.9
c		10.6	57.9
c+12'		10.2	58.3
c+14'		11.1	57.4
1/4		11.2	57.3
cb		10.1	58.4
W. line		9.8	58.7

48

HI = 68.5

So.  $\frac{1}{4}$ 

W. line

10.8 57.7

11.0 57.5

12.5 56.0

 $\frac{1}{4} + 17'$ 

12.6 55.9

C

12.0 56.5

12.4 56.1

12.4 56.1

E. line

12.2 56.3

Center

E. line

H.I.

57.42

3.1 57.3

2.6 54.8

2.8 54.6

C

2.4 55.0

 $\frac{1}{4} + 17'$ 

3.4 54.0

1.9 55.5

1.2 56.2

W. line

1.0 56.4

H.I. 57.42

40

N.  $\frac{1}{4}$ 

W. line

2.1 55.3

1.8 55.6

3.2 54.2

C

4.4 53.0

4.8 52.6

3.8 53.6

4.0 53.4

E. line

4.3 53.1

N. cb.

E. line

5.1 52.3

5.5 51.9

 $\frac{1}{4} + 17'$ 

5.2 52.2

6.3 51.1

5.4 52.0

3.9 53.5

3.0 54.4

W. line

2.6 54.8

HI=57.4

North line Terrace

W. line	3.5	53.9
	4.4	53.0
	4.9	52.5
C	6.1	51.3
* $\frac{1}{4}$ apex of triangle	7.0	50.4
$\frac{1}{4} + 15'$	7.1	50.3
+ 16'	6.3	51.1
cb	6.4	51.0
E. line	6.5	50.9

West line Boulevard

So. line	2.8	54.6
	4.5	52.9
cb + 10'	5.8	51.6
$\frac{1}{4}$	6.8	50.6
$\frac{1}{4} + 2'$ apex = $\frac{1}{4}$ above	7.0	50.4
C	7.0	50.4
	8.1	49.3
	8.3	49.1
No. line	9.1	48.3

HI=57.4

41

West cb.

N. line	10.0	47.4
	9.1	48.3
	9.1	48.3
C	7.8	49.6
	7.9	49.5
$\frac{1}{4} + 10'$	7.5	49.9
cb	6.4	51.0
	5.9	51.5
So. line	4.6	52.8

W  $\frac{1}{4}$

So. line	5.7	51.7
so. + 15'	7.3	50.1
cb	8.3	49.1
	8.7	48.7
C	9.4	48.0
	10.0	47.4
	10.3	47.1
N. line	11.1	46.3

HI = 57.4

Center

N. line	12.2	45.2
	11.4	46.0
	10.8	46.6
E	10.8	46.6
	9.4	48.0
	9.4	49.0
S. line	7.4	50.0
E, 1/4		
S. line	9.4	49.0
5.6 x 8'	10.2	47.2
	10.2	47.2
	10.4	47.0
C	11.5	45.9
	11.4	46.0
	12.6	44.8
N. line	13.2	44.2

HI = 57.4

42

E. cb.

N. line	14.2	43.2
	13.3	44.1
	12.5	44.9
C	12.3	45.1
	11.6	45.8
	11.1	46.3
S. line	10.2	47.2
East line Boulevard		
S. line	11.8	45.6
	12.2	45.2
	12.8	44.6
C	13.1	44.3
	13.9	43.5
	14.9	42.5
N. line	15.5	41.9

H.I. 46.05

25' E

W line	6.2	39.8
	5.9	40.1
	4.9	41.1
C	4.3	41.7
	3.4	42.6
	2.7	43.3
Sol line	2.2	43.8

50' E

Sol line	4.3	41.7
	4.7	41.3
	5.3	40.7
C	6.3	39.7
	7.3	38.7
	7.8	38.2
W line	8.3	37.7

H.I. = 46.0

43

75' E

W line	10.1	35.9
	9.5	36.5
	9.0	37.0
C	7.8	38.2
	6.2	39.8
	5.9	40.1
Sol line	5.7	40.3

100' E

Sol line	7.1	38.9
	7.5	38.5
	8.4	37.6
C	9.6	36.4
	10.3	35.7
	11.4	34.6
W line	11.7	34.3

HI = 46.0

125' E

N. line	13.2	32.8
	12.5	33.5
	11.7	34.3
C	10.7	35.3
	9.7	36.3
	8.3	37.7
S. line	8.1	37.9

150' E

S. line	9.1	36.9
	9.8	36.2
	10.9	35.1
C	12.1	33.9
	13.0	33.0
	13.7	32.3
N. line	14.3	31.7

HI 35.50

44

175' E

N. line	4.7	30.8
	4.0	31.5
	3.2	32.3
C	2.1	33.4
	1.3	34.2
	0.0	35.5
S. line	-0.3	35.80

200' E

S. line	0.5	35.0
	0.9	34.6
	2.2	33.3
C	3.1	32.4
	3.7	31.8
	4.6	30.9
N. line	5.1	30.4

HI = 35.5

225' E

N. line

6.2 29.3

5.4 30.1

4.8 30.7

C

4.0 31.5

2.9 32.6

1.8 33.7

S. line

1.3 34.2

250' E

S. line

1.9 33.6

2.7 32.8

3.7 31.8

C

4.8 30.7

5.6 29.9

6.2 29.3

N. line

6.7 28.8

HI = 35.5

45

275' E

N. line

7.4 28.1

7.2 28.3

6.2 29.3

C

5.5 30.0

4.1 31.4

3.4 32.1

S. line

2.8 32.7

300' E

S. line

3.3 32.2

3.9 31.6

5.0 30.5

C

6.1 29.4

6.4 29.1

7.5 28.0

N. line

7.8 27.7



HI = 35.5

325' E

N. line	8.9	26.6
	8.0	27.5
	7.3	28.2
C	6.5	29.0
	5.1	30.4
	4.5	31.0
S. line	3.8	31.7

350' E

S. line	4.4	31.1
	5.0	30.5
	5.6	29.9
C	7.2	28.3
	7.7	27.8
	8.2	27.3
N. line	8.9	26.6

HI = 36.5

46

375' E

N. line	9.6	25.9
	8.7	26.8
	8.5	27.0
C	7.7	27.8
	6.5	29.0
	5.6	29.9
S. line	4.7	30.8

400' E

S. line	5.1	30.4
	6.5	29.0
	7.1	28.4
C	8.2	27.3
	9.1	26.4
	9.5	26.0
N. line	10.4	25.1

HI = 35.5

425' E

N. line 10.6 24.9

10.1 25.4

9.4 26.1

C 8.4 27.1

7.7 27.8

6.4 29.1

So. line 5.6 29.9

450' E

So. line 5.6 29.9

6.6 28.9

7.6 27.9

C 9.2 26.3

9.6 25.9

10.2 25.3

N. line 10.7 24.8

HI = 35.5

17

475' E

N. line 10.9 24.6

10.7 24.8

10.0 25.5

C 9.0 26.5

7.3 28.2

6.7 28.8

So. line 5.7 29.8

500' E

So. line 5.8 29.7

6.8 28.7

7.9 27.6

C 8.8 26.7

9.9 25.6

10.7 24.8

N. line 11.5 24.0

Fig. 4.

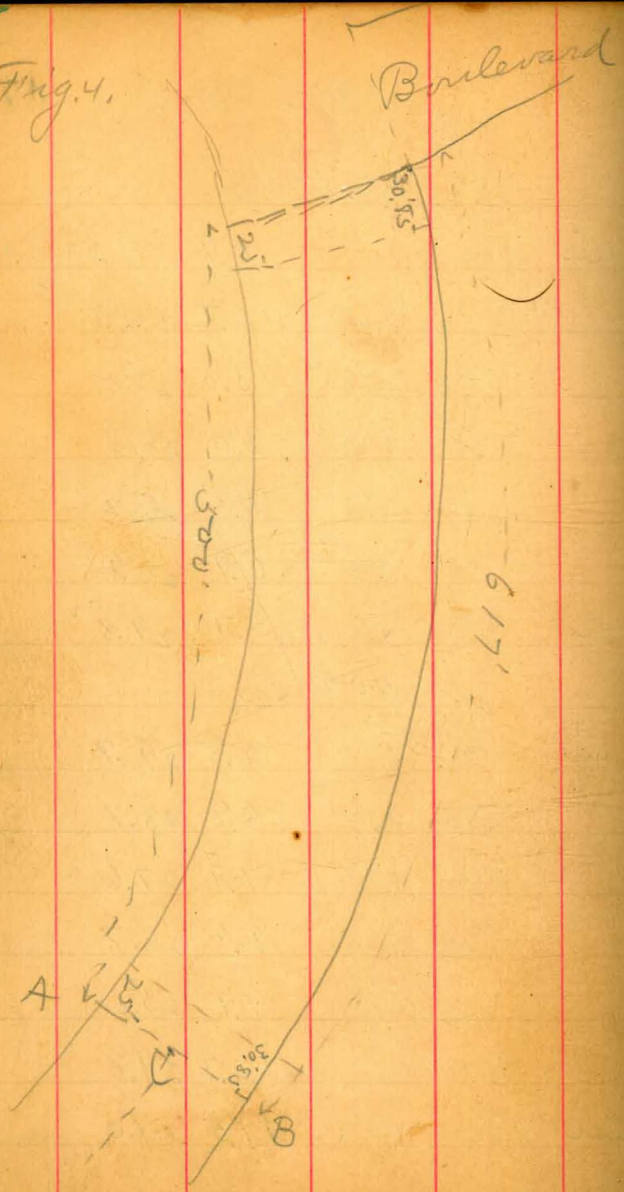
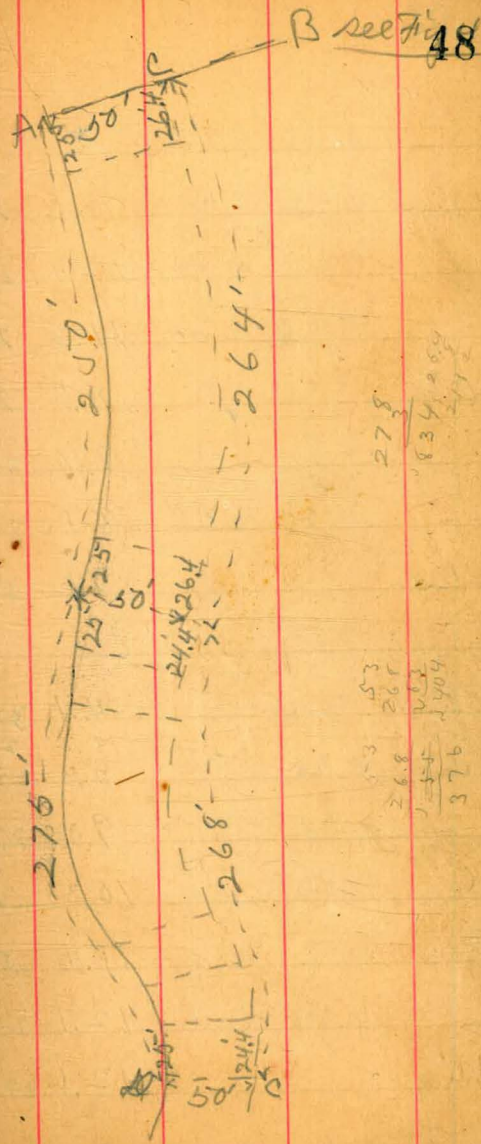


Fig. 5.



278
834.00
2412

53
268
54
1404
376

B see Fig. 48

H.I. 36.93

Dec. 28, 1915

525' E

N. line

14.8 22.1

12.4 24.5

11.5 25.4

C

10.3 26.6

9.4 27.5

8.1 28.8

So. line

7.6 29.3

550' E

So. line

So. + 3'

cb

4.7 32.2

8.2 28.7

8.3 28.6

9.2 27.7

C

10.3 26.6

By

11.4 25.5

12.1 24.8

N. line

12.6 24.3

H.I. = 36.9

49

575' E

N. line

12.3 24.6

11.7 25.2

11.0 25.9

C

10.2 26.7

9.1 27.8

8.3 28.6

8.2 28.7

So. line

3.5 33.4

600' E

So. line

So. + 7'

cb

3.1 33.8

7.4 29.5

8.0 28.9

8.7 28.2

C

9.7 27.2

10.5 26.4

11.6 25.3

N. line

13.1 23.8

HI = 36.9

625' E

1/2+7  
c

9.7 27.2

9.5 27.4

8.2 28.7

7.0 29.9

7.0 29.9

2.6 34.3

cb+5  
So. line

650' E

So. line  
s.p.+7  
cb

2.2 34.7

2.1 34.8

5.9 31.0

7.0 29.9

8.3 28.6

c

1/4

8.5 28.4

HI = 36.9

50

675' E

cb+4'

1/4

c

1/2+14'

cb+3'

So. line

9.0 27.9

8.5 28.4

7.2 29.7

6.1 30.8

5.3 31.6

3.5 33.4

2.1 34.8

1.6 35.3

700' E

So. line

H.I.

49.25

12.4

36.9

H.I.

36.93

0.9

36.0

cb+6'

1/4

c

4.7

32.2

5.3

31.6

6.3

30.6

7.3

29.6

8.4

28.5

9.8

27.1

cb+11'

H.I. = 36.9

725' E

M. line  
5+11  
cb

9.1 27.8

7.6 29.3

6.6 30.3

c

5.3 31.6

4.1 32.8

3.5 33.4

1/4+6

0.5 36.4

1/4+12

0.6 36.3

cb

So. line

H.I.

49.25

11.1

38.2

750'

So. line

10.5 38.8

12.3 37.0

H.I.

36.93

2.4 34.5

c

4.2 32.7

5.4 31.5

6.6 30.3

cb+10'

7.6 29.3

51

H.I. = 36.9

775' E

cb+3'

5.1 31.8

1/4

4.2 32.7

c

2.6 34.3

0.7 36.2

H.I.

49.25

11.2 38.1

So. line

7.1 42.2

800' E

So. line

6.8 42.5

9.7 39.6

11.6 37.7

1/4+6

H.I.

36.93

0.0 36.9

1/4+7'

0.8 36.1

1.2 35.7

3.2 33.7

1/4+12'

4.0 32.9

825' E

c+9'	H.I.	<u>36.93</u>	3.1	33.8
1/4			2.4	34.5
C			0.2	36.7
	H.I.	<u>49.25</u>	10.5	38.8
cb			8.2	41.1
cb+10'			6.2	43.1
So. line			4.0	45.3

850' E

So. line			1.0	48.3
			6.8	42.5
			9.5	39.8
C			11.8	37.5
			14.1	35.2
1/4+10'			14.4	34.9

875' E

cb+4'	H.I.	<u>49.25</u>	15.4	33.8
1/4			13.3	36.0
C			11.7	37.6
			8.9	40.4
			5.3	44.0
So. line	H.I.	<u>54.56</u>	4.1	50.5

900' E

So. line			4.9	49.7
	H.I.	<u>49.25</u>	3.7	45.6
			7.2	42.1
C			10.6	38.7
			13.1	36.2
			14.8	34.5
cb+6'			15.1	34.2

HI 49.25  
920' E

91. line		16.3	33.0
		14.7	34.6
		13.1	36.2
C		11.1	38.2
c+10		10.4	38.9
c+12		9.6	39.7
1/4		7.5	41.8
cb		0.8	48.5

Sol line H.I. 54.56 4.2 50.4

950' E

Sol line	H.I.	54.56	4.3	56.3
Sol. + 10'			4.8	49.8
	H.I.	49.25	1.7	47.6
			8.8	40.5
1/4 + 3'			10.5	38.8
C			12.1	37.2

H.I. 44.35 9.3 35.1

cb+12		10.8	33.6
		12.2	32.2

HI 44.35  
970' E

91. line + 6'		12.8	31.6	
		14.6	32.8	
		10.1	34.3	
C	H.I.	49.25	13.9	35.4
			11.1	38.2
1/4 + 3'			10.8	38.5
cb			2.8	46.5
cb+8'	H.I.	54.56	5.0	49.6
Sol line			4.8	49.8

1000' E

Sol line	H.I.	54.56	8.3	46.3
	H.I.	49.25	6.9	42.4
cb + 10'			9.0	40.3
cb + 6'			10.4	38.9
1/4			11.2	38.1
C			14.1	35.2

H.I. 44.35 10.6 33.8

11.9 32.5

13.4 31.0

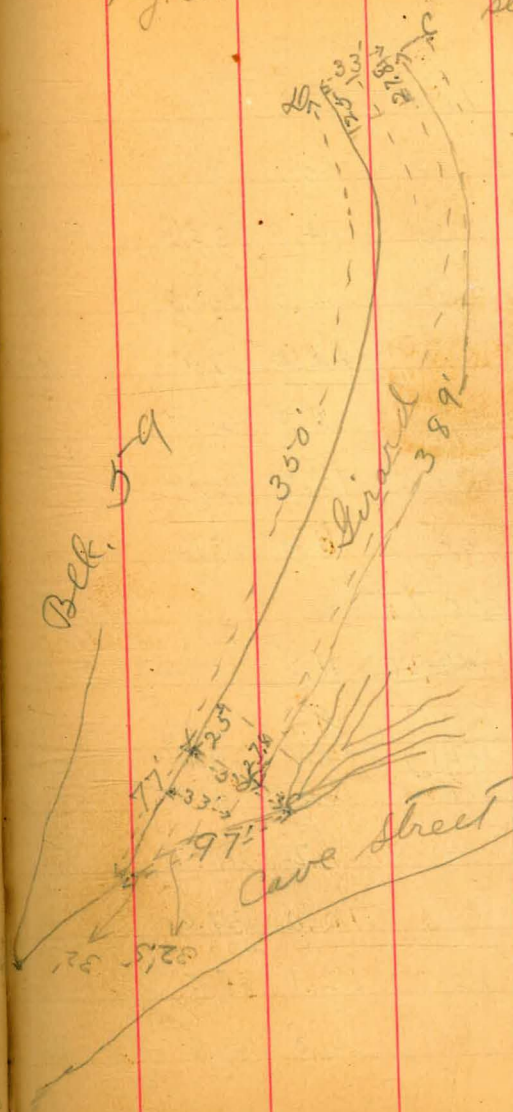


		1025 <sup>2</sup> E		
591. line	H.I.	44.35	13.5	30.9
			12.0	32.4
			10.6	33.8
c	H.I.	49.25	14.4	34.9
			12.6	36.7
			10.6	38.7
cl + 2			10.4	38.9
cl + 3			9.4	39.9
80 line	H.I.	54.56	9.3	45.8
			45.3	

Profile

Fig. 6.

see Fig 54



292  
176  
891  
282  
292  
574  
292  
2044

H.I. 47.57

1050' E

N. line		15.3	32.3
		14.0	33.6
		12.3	35.3
C		10.5	37.1
		8.7	38.9
		5.2	42.4
S. line		0.4	47.2
		107.5	' E
S. line	H.I.	<u>59.31</u>	4.5 53.8
			9.7 48.6
cb+16	H.I.	<u>47.57</u>	4.5 43.1
M			6.0 41.6
C			7.2 40.4
			10.0 37.6
			12.1 35.5
N. line			14.0 33.6

H.I. 47.57

1100' E

cb			10.9	36.7
			8.3	39.3
C			3.5	44.1
			2.6	45.0
			1.1	46.5
1/4+1'			4.5	53.8
cb	H.I.	<u>59.31</u>		
S. line			2.7	55.6
			112.5	' E
S. line	H.I.	<u>80.43</u>	15.0	65.4
	H.I.	<u>65.77</u>	8.3	57.5
cb+12'	H.I.	<u>59.51</u>	5.2	54.3
1/4			8.3	51.2
1/4+3'			10.1	49.4
C			11.5	48.0
C+4'	H.I.	<u>47.57</u>	0.4	47.2
1/4			5.8	41.8
			8.6	39.0
cb				
cb+14'			11.1	36.5

HI 4757

1150' E

N. line			8.5	39.1
			4.7	42.9
cb+10			2.7	44.9
4	H.I.	<u>59.51</u>	14.8	44.7
1/4+12			7.6	51.9
C			7.0	52.5
			5.6	53.9
1/4+3'	H.I.	<u>65.77</u>	3.9	61.9
	H.I.	<u>80.43</u>	17.0	63.4
So. line			9.2	71.2
			11.75	
So. line	H.I.	<u>80.43</u>	4.5	75.9
cb			12.6	67.9
cb+12'			18.4	62.0
	H.I.	<u>59.51</u>	1.4	58.1
C			3.0	56.5
c+3'			3.4	56.1
1/4			10.1	49.4
1/4+4'			11.6	47.9
	H.I.	<u>47.57</u>	0.9	46.7
N. line			5.3	42.3

1200' E

cb+11'	H.I.	<u>59.51</u>	10.0	49.5
			7.4	52.1
C	H.I.	<u>71.53</u>	11.4	60.1
			10.3	61.2
1/4+7'			5.4	66.1
cb	H.I.	<u>80.43</u>	10.5	69.9
So. line			3.0	77.4
			12.25	
So. line	H.I.	<u>80.43</u>	2.4	78.0
cb			8.2	72.2
cb+6	H.I.	<u>71.53</u>	2.1	69.4
cb+10	H.I.	<u>71.53</u>	6.5	85.0
4			7.0	64.5
1/4+11'			8.1	63.4
C			11.9	59.6
c+7'	H.I.	<u>59.51</u>	1.5	58.0

1250' E

C	H.I.	71.53	10.1	61.4
c+7'			9.0	62.5
1/4			4.6	66.9
1/4+15'			3.8	67.7
cb			1.7	69.8
c+7'	H.I.	80.43	5.3	75.1
So line			2.9	77.5

1275' E

So line	H.I.	80.43	3.7	76.7
So. l. + 13'	H.I.	71.53	0.0	71.5
cb			2.5	69.0
cb+14'			3.3	68.2
1/4			5.6	65.9
4+3'			6.3	65.2

1300' E

C+8  
411/4+2'  
1/4+11'  
cb  
So lineSo line  
So. l. + 6'  
cb  
cb+3'  
1/4

4+6'

H.I. 71.5

H.I.

H.I.  
H.I.

80.43

1325' E

80.43  
71.53

8.2 63.3

6.5 65.0  
6.4 65.1  
1.7 69.8  
1.3 70.2  
1.2 70.3  
4.2 76.23.2 77.2  
0.0 71.5  
0.2 71.3  
0.0 71.5  
6.1 65.4  
7.2 64.3

1350' E

C	H.I.	<u>71.53</u>	7.7	63.8
			5.4	66.1
cb+14'	H.I.	<u>80.43</u>	8.1	72.3
So. line			8.2	72.2
			5.5	74.9

1375' E

So. line	H.I.	<u>80.43</u>	7.0	73.4
			7.2	73.2
	H.I.	<u>71.53</u>	4.6	66.9
C			6.9	64.6

West line Cave St.

C	H.I.	<u>71.53</u>	6.9	64.6
cb+22'			3.9	67.6
1/4			1.6	69.9
cb	H.I.	<u>80.43</u>	3.4	77.0
cb+26	H.I.	<u>83.44</u>	3.4	80.0
So. line			0.0	83.4



nlis

275' W

10.8 130.6

10.2 131.2

10.2 131.2

c

9.7 131.7

9.3 132.1

8.9 132.5

Solis

8.8 132.6

250' W

Solis

5.8 135.6

6.0 135.4

6.3 135.1

c

6.8 134.6

7.2 134.2

7.8 133.6

nlis

8.6 132.8

14144

60

225' W

nlis

5.8 135.6

4.8 136.6

3.9 137.5

c

3.3 138.1

2.0 139.4

1.2 140.2

Solis

1.0 140.4

J.P.

H.E.

12.95 154.28 0.11 141.33

200' W

Solis

9.9 144.4

9.6 144.7

9.6 144.7

c

11.2 143.1

12.5 141.8

13.4 140.9

nlis

14.3 140.0

101

154.25  
175' W

n line	11.2	143.1
	10.2	144.1
	9.2	145.1
c	8.4	145.9
	8.0	146.3
	7.6	146.7
Solius	7.8	146.5
	145' W	
Solius	6.2	148.1
	6.1	148.2
	5.9	148.4
c	5.9	148.4
	6.2	148.1
	6.8	147.5
n line	7.6	146.7

115' W

n line	4.8	149.5
	4.6	149.7
	4.1	150.2
c	3.9	150.4
	3.9	150.4
	4.0	150.3
Solius	3.5	150.8
	75' W	
Solius	1.5	152.8
	1.2	153.1
	1.3	153.0
c	1.3	153.0
	1.6	152.7
	2.0	152.3
n line	1.9	152.4



154.28

35' W

n line		0.8	153.5
		0.6	153.7
		0.3	154.0
C		0.3	154.0
		0.4	153.9
		0.1	154.2
Solus		0.0	154.3
T.P.	4.61	H.I. 158.76	0.13 154.15
Solus		sect. on A.B.	
Solus		4.1	154.7
		3.8	155.0
		4.2	154.6
C		4.2	154.6
		4.2	154.6
		4.4	154.4
n line		4.7	154.1

158.76

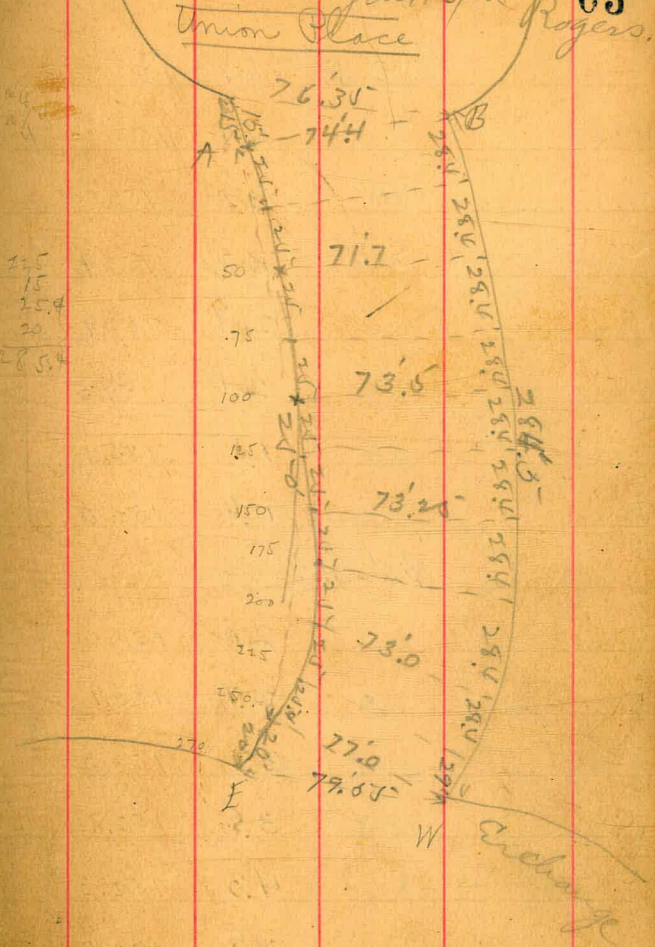
White Park

n line		4.7	154.1
		4.5	154.3
		4.2	154.6
C		4.2	154.6
		4.1	154.7
		3.8	155.0
Solus		4.0	154.8
B.N.	A.W. 7' Pine of Park Riv & Park.	4.17	154.69

X section Beach Road from Park Prospect. Park  
 Union Place Jan 13/08  
 1611/6 Barber Rogers. 63

	H.T.	
T.P. 2.01	156.60	154.59
White Park		
White	3.7	152.9
	2.8	153.8
	2.4	154.2
c	1.6	155.0
	0.9	155.7
	0.4	156.2
Elms	-0.1	156.70
sect. on A.B.		
Elms	0.0	156.6
	0.4	156.2
	1.3	155.3
c	2.0	154.6
	2.5	154.1
	2.9	153.7
White	3.7	152.9

2.5  
 15  
 25.4  
 20  
 285.4



Park Row

156.60

25' No. 4 B

Whio	4.4	152.2
	3.8	152.5
	3.2	153.9
c	2.7	153.9
	2.1	154.5
	1.5	155.1
Eliso	0.6	156.0

50' No.

Eliso	2.0	154.6
	2.7	153.9
	3.3	153.3
c	3.8	152.8
	4.3	152.3
	4.8	151.8
Whio	5.5	151.1

75' No.

Whio	6.7	149.9
	5.8	150.8
	5.2	151.4
c	4.5	152.1
	4.2	152.4
	3.6	153.0
Eliso	2.8	153.8

100' No.

Eliso	3.2	153.4
	4.1	152.5
	4.7	151.9
c	5.6	151.0
	6.1	150.5
	6.5	150.1
Whio	7.5	149.1

Paris Row

65

	125' No.	
Whio	8.5	148.1
	7.5	149.1
	6.9	149.7
c	6.5	150.1
	5.8	150.8
	4.9	151.7
Eliv	3.8	152.8

	150' No.	
Eliv	4.6	152.0
	5.5	151.1
	6.0	150.6
c	7.0	149.6
	8.5	148.1
	9.4	147.2
Whio	9.8	146.8

	175' No.	
Whio	11.6	145.0
	10.8	145.8
	9.5	147.1
c	8.3	148.3
	7.3	149.3
	6.5	150.1
Eliv	5.4	151.2

	200' No.	
Eliv	6.2	150.4
	7.9	148.7
	9.2	147.4
c	10.5	146.1
	11.5	145.1
	12.5	144.1
Whio	13.0	143.6

Park Row

white

225' no.

14.1 142.5

13.2 143.4

12.0 144.6

c

11.6 145.0

10.6 146.1

9.5 147.1

white

7.7 148.9

250'4 no.

white

7.6 149.0

9.7 146.9

10.7 145.9

c

11.9 144.7

12.6 144.0

13.3 143.3

white

14.7 141.9

156.60

66

No. line Exchange Place

white

14.7 141.9

13.3 143.3

12.6 144.0

c

11.8 144.8

11.1 145.5

10.2 146.4

white

8.7 147.9

J.P. on hub & 2.00 8.69 147.91



Panic Row

15781

Center

whis

10.0 141.8

8.9 142.9

8.3 143.5

c

7.4 144.8

6.7 145.1

5.7 146.1

elms

4.0 147.8

No 1/4

elms

3.7 148.1

5.1 146.7

6.1 145.7

c

7.1 144.7

7.9 143.9

8.8 143.0

whis

9.3 142.5

68

210.06

whis

8.7 143.1

8.4 143.4

7.2 144.6

c

6.3 145.5

5.7 146.1

4.8 147.0

elms

3.2 148.6

No line Exchange

elms

3.5 148.3

4.1 147.7

4.5 147.3

c

5.2 146.6

7.0 144.8

7.7 144.1

whis

8.5 143.3

Paris Row

Sect. on A.B.

white	9.0	142.8
	7.7	144.1
	6.5	145.3
c	5.0	146.8
	4.3	147.5
	3.9	147.9
blue	3.5	148.3

25' no.

blue	2.3	149.5
	3.3	148.5
	4.1	147.7
c	5.0	146.8
	5.8	146.0
	7.3	144.5
white	8.5	143.3

50' no.

white	7.7	144.1
	6.3	145.5
	5.2	146.6
c	4.1	147.7
	3.1	148.7
	2.3	149.5
blue	1.8	150.0

75' no.

blue	1.1	150.7
	1.7	150.1
	2.2	149.6
c	3.0	148.8
	3.9	147.9
	5.0	146.8
white	6.2	145.6



Panic Row

	95' no.	
white	5.2	146.6
	4.1	147.7
	3.1	148.7
c	2.2	149.6
	1.3	150.5
	0.9	150.9
elms	0.5	151.3
	120' no.	
elms	0.8	151.0
	0.6	151.2
	0.9	150.9
c	1.7	150.1
	2.7	149.1
	3.6	148.2
white	4.1	147.7

	145' no.	
white	3.4	148.4
	2.6	149.2
	2.5	149.3
c	2.4	149.4
	1.8	150.0
	1.5	150.3
elms	1.1	150.7
	170' no.	
elms	2.1	149.7
	2.3	149.5
	2.6	149.2
c	2.8	149.0
	2.9	148.9
	2.9	148.9
white	3.1	148.7

Paris Row

		195' no.	
whit	whit	3.9	147.9
		3.7	148.1
		3.4	148.4
c	c	3.7	148.1
		3.8	148.0
		3.7	148.1
Elus	Elus	3.5	148.3

		215' no.	
Elus	Elus	4.8	147.0
		4.6	147.2
		4.7	147.1
c	c	4.6	147.2
		4.4	147.4
		4.5	147.3
whit	whit	4.5	147.3

		227' no.	
whit		4.5	147.3
		5.2	146.6
		5.3	146.5
c		5.4	146.4
		5.2	146.6
		5.2	146.6
Elus		5.7	146.1

		252' no.	
Elus		9.0	142.8
		8.2	143.6
		7.7	144.1
c		7.2	144.6
		7.0	144.8
		6.8	145.0
whit		6.8	145.0

Parse Row

157.81

277' No.

whio 8.4 143.4

8.9 142.9

9.7 142.1

e 10.6 141.2

11.5 140.3

11.8 140.0

eluo 12.2 139.6

J.P. 3.58 <sup>H.T.</sup> 143.23 12.16 139.65

302' No.

E. hio 6.5 136.7

5.8 137.4

5.8 137.4

c 5.0 138.2

3.7 139.5

2.8 140.4

whio 2.3 140.9

143.23

72

327' No.

whio 4.7 138.5

5.7 137.5

6.7 136.5

e 7.3 135.9

8.1 135.1

9.1 134.1

eluo 9.7 133.5

336.7 No.

eluo 11.4 131.8

10.3 132.9

9.1 134.1

c 8.7 134.5

8.0 135.2

6.6 136.6

whio 5.6 137.6

Paris Row

143.23

So line Prospect.

White	5.6	137.6
	6.8	136.4
	8.2	135.0
C	9.0	134.2
	9.9	133.3
	11.0	132.2
Blue	12.4	131.8

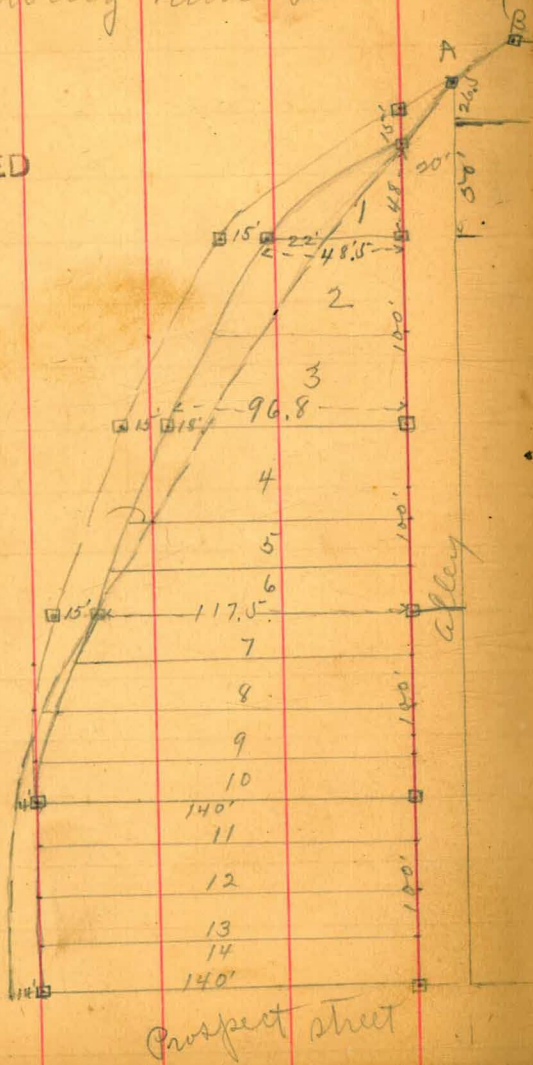
Survey of Blk. 45 Lafayette  
showing how Boulevard

Park for Fred Scripps  
cuts Blk.

74

POSTED

State Street Boulevard



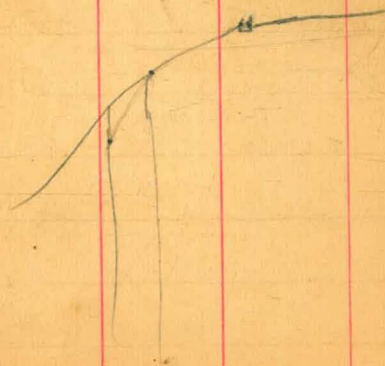
91.5

dash line is edge of  
Boulevard

POSTED Nov. 16/09

Schields  
Barber  
Rogers

Apr. 22/10  
Put in hubs  
A + B.  
2 ans.



X. sect. Ravina

Prospect to Borden

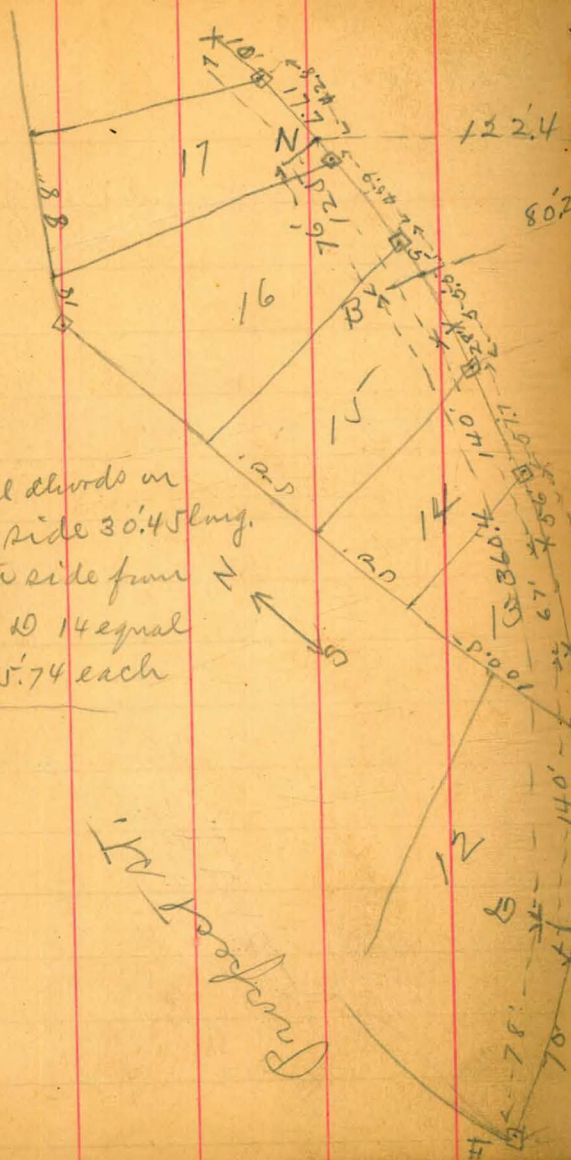
75

May 11/09.

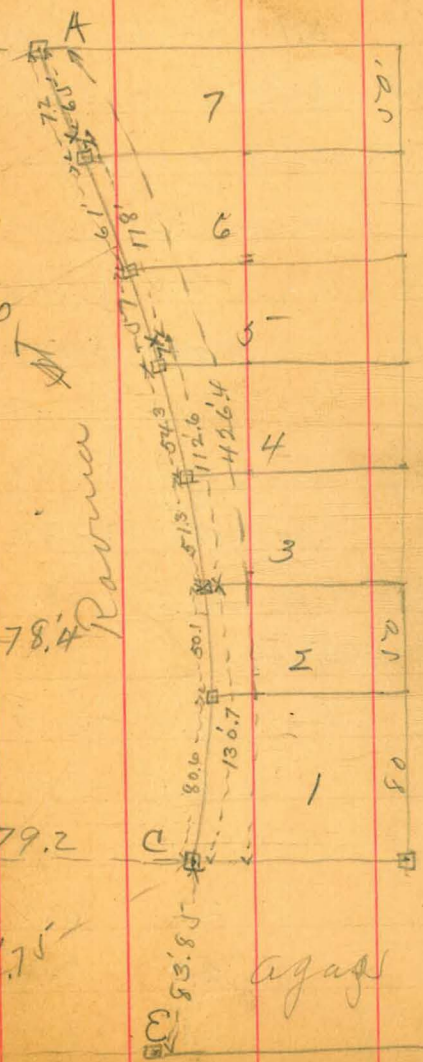
Barrett  
Taylor

note

14 equal chords on  
south side 30'.45 long.  
on north side from  
A B to C 10 14 equal  
chords 25'.74 each



Prospect St.



Ravina

Beard St.

agap

	H.I.	Rod	Elev.
	4.39	<u>38.52</u>	34.13 B.M.
	West line again -		
No. line		2.3	36.2
		3.0	35.5
		4.1	34.4
C		4.6	33.9
		5.9	32.6
1/4 + 6'		6.1	32.4
cb		11.8	26.7
No. line		20.2	18.3
	west cb,		
No. line		17.2	21.3
		8.5	30.0
cb + 5'		1.5	37.0
1/4		2.5	36.0
C		2.2	36.3
		2.2	36.3
		2.8	35.7
No. line		1.7	36.2

38.52

76

	H.I.	Rod	Elev.
	W. 1/4	10.4	
No. line		10.4	28.1
	Center		
No. line		6.4	32.1
	H.F.		
	12.31	<u>46.44</u>	<u>34.13</u>
No. cb	W 1/4	7.7	38.8
		7.0	39.4
C		6.9	39.5
		6.9	39.5
		8.4	38.0
No. line		8.8	37.6

POSTED

46.44

Center

solus	7.3	39.1
	6.9	39.5
	6.3	31.1
c	4.5	41.9
	4.5	41.9
cb.	5.5	40.9
cb + 5	6.7	39.7

East 1/4

no line	10.6	35.8
no line + 11	6.1	40.3
cb	5.5	40.9
	3.6	47.8
c	3.2	43.2
	4.3	42.1
	5.2	41.2
solus	6.2	40.2

46.44

77

East cb

solus	5.8	40.6
	3.9	42.5
	2.6	43.8
c	2.0	44.4
	2.6	43.8
	5.5	40.9
no line	10.6	35.8

East line

no line	10.2	36.2
	5.5	40.9
	2.3	44.1
c	1.5	44.9
	2.4	44.0
	3.0	43.4
solus	4.1	42.3



46,44

25' + no. Agazh

no line

3.4 43.0

2.4 44.0

1.6 44.8

c

1.1 45.3

1.5 44.9

3.7 42.7

no line

8.5 37.9

50 + no.

no line

9.8 36.6

5.3 41.1

66+2'

3.1 43.3

1/4

1.6 44.8

c

0.3 46.1

1.2 45.2

1.3 45.1

no line

2.0 44.4

J.P.

1144 57.74 0.14 46.30

57,74

78

75' + no.

no line

12.2 45.5

12.5 45.2

12.3 45.4

c

11.7 46.0

12.9 44.8

13.2 44.5

no line

13.1 44.6

100' + no.

no line

9.7 48.0

10.7 47.0

10.5 47.2

c

9.6 48.1

10.1 47.6

9.2 48.5

no line

9.3 48.4

5774

	125' + No.	
Robin	5.5	52.2
	6.3	51.4
	6.8	50.9
c	7.3	50.4
	7.9	49.8
	7.6	50.1
Robin	7.3	50.4
	150' + No.	
Robin	4.8	52.9
	5.0	52.7
	5.2	52.5
c	5.0	52.7
	4.6	53.1
	3.6	54.1
Robin	2.6	55.1

5774

79

	175' + No.	
Robin	1.4	56.3
	2.3	55.4
	3.2	54.5
e	3.0	54.7
	3.0	54.7
	2.9	54.8
	2.8	54.9
Robin		
J.P.	7.24	<sup>4.5</sup> 63.76
		1.22 56.52
Robin		
	200' + No.	
Robin	7.4	56.4
	7.2	56.6
	7.0	56.8
c	7.1	56.7
	6.9	56.9
	6.5	57.3
Robin	6.1	57.7

63.76

225' + no.

Robin

5.2 58.6

5.6 58.2

5.7 58.1

c

5.7 58.1

5.9 57.9

6.1 57.7

no. line

6.4 57.4

250' + no.

no. line

6.6 57.2

6.0 57.8

5.0 58.8

c

5.2 58.6

5.2 58.6

5.0 58.8

Robin

4.6 59.2

63.76

80

275' + no.

Robin

4.1 59.7

4.5 59.3

4.6 59.2

c

4.8 59.0

4.2 59.6

5.8 58.0

no. line

6.3 57.5

300' + no.

no. line

5.5 58.3

5.1 58.7

4.6 59.2

c

4.1 59.7

3.9 59.9

3.8 60.0

Robin

3.6 60.2

6376

325' + no.

sol. line	3.1	60.7
	3.1	60.7
	3.4	60.4
c	3.0	60.8
	3.8	60.0
	5.0	58.8
no. line	6.0	57.8
350' + no. sect on A.B.		
no. line	6.1	57.7
	5.3	58.5
	4.5	59.3
c	3.9	59.9
	2.6	61.2
	2.3	61.5
no. line	2.4	61.4

POSTED

6376

Loc N West line Borden

no. line	80.24	61.4
	2.2	61.6
	2.8	61.0
c	3.4.1	59.7
	76.5.6	58.2
	178.7	55.1
no. line	11.4	52.4
	11.3	

OK.

E.	Degrees.
81	89
05	88
80	87
54	86
28	85
02	84
75	83
49	82
21	81
03	80
5	79
6	78
7	77
6	76
4	75
2	74
9	73
4	72
9	71
8	70
5	69
7	68
7	67
7	66
4	65
1	64
1	63
1	62
0	61
0	60
0	59
	58
	57
	56
	55
	54
	53
	52
	51
	50
	49
	48
	47
	46
	45
Degrees.	
45	

108 189.7 275  
 580 29.2  
 769.7 3  
 87.6

38.9 29.2  
 350 7  
 252 2044

132  
 110  
 325 15100 1.57  
 325 105  
 1850 785  
 1625 57

Return to City Engineers' Office  
 City Hall, San Diego, Cal.

763  
 76.6 near lat. by by  
 76.6  
 70.9  
 77.1  
 76.9  
 77.1  
 77.3  
 77.7

3.8  
 2.1  
 14.0  
 5.1

1.16  
 24  
 70

Return to City Engineers' Office  
 City Hall, San Diego, Cal.  
**TRAVERSE TABLE FOR TRANSIT BOOK**  
 From 1° to 90° for a distance of 100.

Degrees.	DEGREES.		¼ DEGREE.		½ DEGREE.		¾ DEGREE.		Degrees.
	Lat.	Dep.	Lat.	Dep.	Lat.	Dep.	Lat.	Dep.	
0			100.00	0.44	100.00	0.87	99.99	1.31	89
1	99.98	1.75	99.98	2.18	99.97	2.62	99.95	3.05	88
2	99.94	3.49	99.92	3.93	99.91	4.36	99.88	4.80	87
3	99.86	5.23	99.84	5.67	99.81	6.10	99.79	6.54	86
4	99.76	6.98	99.73	7.41	99.69	7.85	99.66	8.28	85
5	99.62	8.72	99.57	9.15	99.54	9.58	99.50	10.02	84
6	99.45	10.45	99.41	10.89	99.36	11.32	99.31	11.75	83
7	99.25	12.19	99.20	12.82	99.14	13.05	99.09	13.49	82
8	99.03	13.92	98.97	14.35	98.90	14.78	98.84	15.21	81
9	98.77	15.64	98.70	16.07	98.63	16.50	98.56	16.93	80
10	98.48	17.36	98.40	17.79	98.33	18.22	98.25	18.65	79
11	98.16	19.08	98.08	19.51	97.99	19.94	97.90	20.36	78
12	97.81	20.79	97.72	21.22	97.63	21.64	97.53	22.07	77
13	97.44	22.50	97.34	22.92	97.24	23.34	97.13	23.77	76
14	97.03	24.19	96.92	24.62	96.81	25.04	96.70	25.46	75
15	96.59	25.88	96.48	26.20	96.36	26.72	96.25	27.14	74
16	96.13	27.56	96.00	27.98	95.88	28.40	95.76	28.82	73
17	95.63	29.24	95.50	29.65	95.37	30.07	95.24	30.49	72
18	95.11	30.90	94.97	31.32	94.83	31.73	94.69	32.14	71
19	94.55	32.56	94.41	32.97	94.26	33.38	94.12	33.79	70
20	93.97	34.20	93.82	34.61	93.67	35.02	93.51	35.43	69
21	93.36	35.84	93.20	36.24	93.04	36.65	92.88	37.06	68
22	92.72	37.46	92.55	37.86	92.39	38.27	92.22	38.67	67
23	92.05	39.07	91.88	39.47	91.71	39.87	91.53	40.27	66
24	91.35	40.67	91.18	41.07	91.00	41.47	90.81	41.87	65
25	90.63	42.26	90.45	42.66	90.26	43.05	90.07	43.44	64
26	89.88	43.84	89.69	44.23	89.49	44.62	89.29	45.01	63
27	89.10	45.40	88.90	45.79	88.70	46.17	88.50	46.56	62
28	88.29	46.95	88.09	47.33	87.88	47.72	87.67	48.10	61
29	87.46	48.48	87.25	48.86	87.04	49.24	86.82	49.62	60
30	86.60	50.00	86.38	50.38	86.16	50.75	85.94	51.13	59
31	85.72	51.50	85.49	51.88	85.26	52.25	85.04	52.62	58
32	84.80	52.99	84.57	53.36	84.34	53.73	84.10	54.10	57
33	83.87	54.46	83.63	54.83	83.39	55.19	83.15	55.56	56
34	82.90	55.92	82.66	56.28	82.41	56.64	82.16	57.00	55
35	81.92	57.36	81.66	57.71	81.41	58.07	81.16	58.42	54
36	80.90	58.78	80.64	59.13	80.39	59.48	80.13	59.83	53
37	79.86	60.18	79.60	60.53	79.34	60.88	79.07	61.22	52
38	78.80	61.57	78.53	61.91	78.26	62.25	77.99	62.59	51
39	77.71	62.93	77.44	63.27	77.16	63.61	76.88	63.94	50
40	76.60	64.28	76.32	64.61	76.04	64.94	75.76	65.28	49
41	75.47	65.61	75.18	65.93	74.90	66.26	74.61	66.59	48
42	74.31	66.91	74.02	67.24	73.73	67.56	73.43	67.88	47
43	73.14	68.20	72.84	68.52	72.54	68.84	72.24	69.15	46
44	71.93	69.47	71.63	69.78	71.33	70.09	71.02	70.40	45
45	70.71	70.71							

Published by H. S. CROCKER COMPANY, Stationers, Drawing Materials,  
 Mathematical Instruments, etc., San Francisco.