

# Abgent: your partner in Neurosciences antibodies.

Neurosciences are impacted by a multitude of cellular processes and mechanisms, from apoptosis, autophagy, cell signaling, and cell differentiation to protein modifications. Antibodies have become a predominant tool for the study of Neurosciences, from biochemistry assays to analyzing the dynamics of individual nerve cells and their molecular constituents.

With unsurpassed production capabilities and flexibility, Abgent is proud to be your partner in Neurosciences antibodies for areas including:

- **Neurodegenerative diseases** [*Alzheimer's, Parkinson's...*]
- **Neurotransmitters** ▪ **Synaptogenesis** ▪ **Neurogenesis**

Visit our website at [www.abgent.com](http://www.abgent.com) for more information on Abgent's Neurosciences line of products and learn more about our EVALUATION SIZE program that allows you to order a sample size of our antibodies for a fraction of the cost.

© 2012 ABGENT. All rights reserved. It's all about New, is a trademark of ABGENT. For Research Use Only. Not For Use In Diagnostic Procedures. ABG-00134-0912

**It's all about New™**  
Unsurpassed Development Capabilities

ABGENT, A WUXI APPTec COMPANY, IS AN INTERNATIONALLY RECOGNIZED ANTIBODY MANUFACTURER OFFERING OVER 18,000 HIGH-QUALITY OFF-THE-SHELF ANTIBODIES. UNSURPASSED DEVELOPMENT CAPABILITIES AND FLEXIBILITY ENABLE ABGENT TO DEVELOP OVER 5,000 NEW ANTIBODIES PER YEAR.



cell sciences®

cytokine center

Browse our web site of recombinant proteins, including cytokines, growth factors, chemokines and neurotrophins. Daily shipping and competitive pricing are offered. Bulk quantities of many proteins available. Cell Sciences also carries corresponding antibodies and ELISA kits.



www.cellsciences.com

LIST OF PROTEINS

Table listing various proteins such as 4-1BBL, 4-1BB Receptor, 6 Ckine, ACAD8, ACAT2, gAcrp30/Adipolean, Activin A, ACY1, ADAT1, Adiponectin, ADRP, AITRL, Akt1, Alpha-Feto Protein (AFP), Alpha-Galactosidase A, Angiopoietin-1 (Ang-1), Angiopoietin-2 (Ang-2), Angiostatin K1-3, Annexin-V, apo-SAA, Apolipoprotein A-1, Apolipoprotein E2, Apolipoprotein E3, Apolipoprotein E4, APRIL, Artemin, ATF2, Aurora A, Aurora B, BAFF, BAFF Receptor, BCA-1 / BLC / CXCL13, BCMA, BD-1, BD-2, BD-3, BDNF, Bivalirudin, BMP-2, BMP-4, BMP-7, BMP-13, sBMPR-1A, Brain Natriuretic Protein, BRAK, Breast Tumor Antigen, C5a, C5L2 Peptide, C-10, C-Reactive Protein, C-Src, Calbindin D-9K, Calbindin D-28K, Calbindin D-29K, Calmodulin, Calcitonin Acetate, Carbonic Anhydrase III, Carcino-embryonic Antigen, Cardiotrophin-1, Caspase-3, Caspase-6, CD4, CD14, CD22, CD40 Ligand / TRAP, CD95 / sFas Ligand, CD105 / Endoglin, CHIPS, CNTF, Collagen, CREB, CTACK/CCL27, CTGF, CTGFL/WISP-2, CTLA-4/Fc, CXCL16, Cytokeratin 8, DEP-1, Desmopressin, Disulfide Oxidoreductase, E-selectin, ECGF, EGF, Elafin/SKALP, EMAP-II, ENA-78, Endostatin, Enteropeptidase, Eotaxin, Eotaxin-2, Eotaxin-3 (TSC), EPHB2, EPHB4, Eptifibatide, Erk-2, Erythropoietin (EPO), Exodus-2, Fas Ligand, Fas Receptor, FGF-1 (acidic), FGF-2 (basic), FGF-4, FGF-5, FGF-6, FGF-7/ KGF, FGF-8, FGF-9, FGF-10, FGF-16, FGF-17, FGF-18, FGF-19, FGF-20, sFGFR-1 (IIIc) / Fc Chimera, sFGFR-2 (IIIc) / Fc Chimera, sFGFR-3 / Fc Chimera, sFGFR-4 / Fc Chimera, sFlt-1 (native), sFlt-1 (D3), sFlt-1 (D4), sFlt-1 (D5), sFlt-1 (D7), Flt3-Ligand, sFlt-4, sFlt-4/ Fc Chimera, Follistatin, FSH, Fractalkine/ CX3C, G-CSF, alpha-Galactosidase A, Galectin-1, Galectin-3, Gastrointestinal CA, GCP-2, GDF-3, GDF-9, GDF-11, GDNF, GLP-1, Glucagon, Goserelin, GM-CSF, GPBB, GROalpha, GRObeta, GROgamma, GRO/MGSA, Growth Hormone, Growth Hormone BP, GST-p21/WAF-1, HB-EGF, HCC-1, HGF, Histidyl-tRNA synthetase, Histrelin, HRG1-beta, I-309, I-TAC, IFN-alpha, IFN-alpha A, IFN-alpha 2a, IFN-alpha 2b, IFN-beta, IFN-gamma, IFN-Omega, IGF-I, IGF-II, proIGF-II, IGFBP-1, IGFBP-2, IGFBP-3, IGFBP-4, IGFBP-4, IGFBP-5, IGFBP-6, IGFBP-7, IL-1alpha, IL-1beta, IL-2, IL-3, IL-4, IL-4 Receptor, IL-5, IL-6, sIL-6 Receptor, IL-7, IL-8 (72 a.a.), IL-8 (77 a.a.), IL-9, IL-10, IL-11, IL-12, IL-13, IL-13 analog, IL-15, IL-16 (121 a.a.), IL-16 (130 a.a.), IL-17, IL-17B, IL-17D, IL-17E, IL-17F, IL-19, IL-20, IL-22, IL-31, Insulin, IP-10, JE, JNK2a1, JNK2a2, KC / CXCL1, KGF, L-asparaginase, LAG-1, LALF Peptide, I-309, LAR-PTP, LC-1, LBP, LD-78beta, LDH, LEC/NCC-4, Leptin, LIGHT, LIX, LKM, LL-37, Lymphotactin, sLYVE-1, M-CSF, MCP-1 (MCAF), MCP-2, MCP-3, MCP-4, MCP-5, MDC (67 a.a.), MDC (69 a.a.), MDH, MEC, Mek-1, MIA, Midkine, MIG / CXCL9, MIP-1alpha / CCL3, MIP-1beta / CCL4, MIP-3 / CCL23, MIP-3alpha / CCL20, MIP-3beta / CCL19, MIP-4 (PARC) / CCL18, MIP-5 / CCL15, MMP-3, MMP-7, MMP-13, Myostatin, Nanog, NAP-2, Neurturin, NFAT-1, beta-NGF, NOGGIN, NOV, NP-1, NT-1/BCSF-3, NT-3, NT-4, Ocreotide, Oncostatin M, Osteoprotegerin (OPG), OTOR, Oxytocin, p38-alpha, Parathyroid Hormone, PDGF-AA, PDGF-AB, PDGF-BB, Persephin, PF-4, PIGF-1, PIGF-2, PKA alpha-subunit, PKC-alpha, PKC-gamma, Pleiotrophin, PLGF-1, Polymyxin B (PMB), PRAS40, PRL-1, PRL-2, PRL-3, Prolactin, Protirelin, PTHrP, PTP1B, PTP-IA2, PTP-MEG2, PTP-PEST, sRANK, sRANKL, RANTES, RELM-alpha, RELM-beta, Resistin, RPTPbeta, RPTPgamma, RPTPmu, SCF, SCGF-alpha, SCGF-beta, SDF-1alpha, SDF-1beta, Secretin, SF20, SHP-2, STAT1, c-Src, TACI, TARC, TC-PTP, TECK, TFF2, TGF-alpha, TGF-beta1, TGF-beta2, TGF-beta3, Thymosin alpha1, sTIE-1/Fc Chimera, sTIE-2/Fc Chimera, TL-1A, TNF-alpha, TNF-beta, sTNFR1, sTNFR2, TPO, TRAIL/Apo2L, sTRAIL R-1 (DR4), sTRAIL R-2 (DR5), TSH, TSLP, TWEAK, TWEAK Receptor, Urokinase, VEGF121, VEGF145, VEGF165, VEGF-C, VEGF-C I525, EG-VEGF, VEGF-E, HB-VEGF-E, sVEGFR-1, sVEGFR-2, sVEGFR-3, WISP-1, WISP-2, WISP-3, WNT-1



# Stick together.

## New DNA Ligases and Ligase Master Mixes

New England Biolabs offers the most extensive selection of high-quality and performance-optimized DNA ligases and ligase master mixes to streamline your cloning experiments.

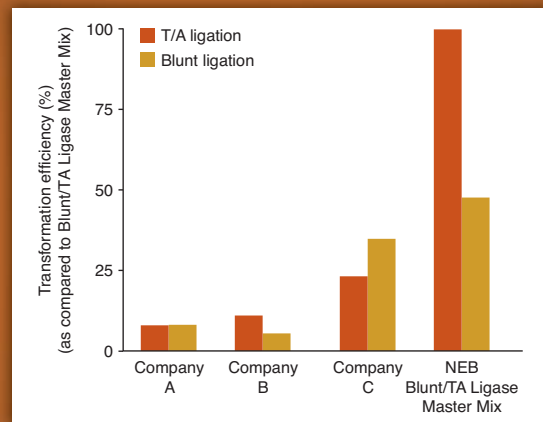
Our expanded portfolio now includes:

- Blunt/TA Ligase Master Mix, optimized for blunt-end and single-base overhang substrates
- Instant Sticky-end Ligase Master Mix, uniquely formulated for the rapid ligation of sticky-end substrates
- T7 DNA Ligase, specific for sticky ends
- ElectroLigase™ directly compatible with electroporation

Stick together with DNA Ligases and Ligase Master Mixes from NEB.

To request a **FREE SAMPLE** of our new DNA Ligase Master Mixes, visit **NEBStickTogether.com**

### Blunt/TA Ligase Master Mix outperforms the competition



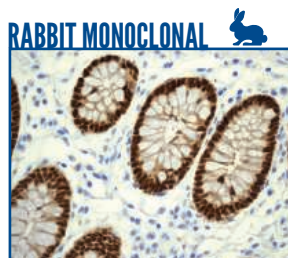
*Duplicate ligation reactions of blunt or T/A vector/insert pairs were set up according to the master mix vendors' suggestions. Equal amounts of ligated DNA were used to transform NEB 10-beta Competent E. coli (NEB #C3019) and triplicate plating was performed. Transformation results were averaged and graphed as a percentage of the highest performing reaction, T/A ligation using the Blunt/TA Ligase Master Mix.*



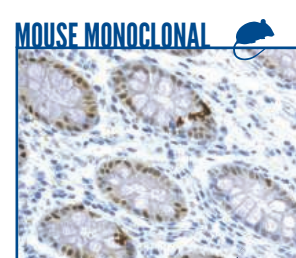
## THE RABBIT **MONOCLONAL** ADVANTAGE

- More diverse epitope recognition
- High specificity and affinity
- Improved response to mouse antigens

Rabbit Monoclonal Antibodies (RabMAbs<sup>®</sup>) provide the combined benefits of superior antigen recognition of the rabbit immune system with the specificity and consistency of a monoclonal antibody, bringing you the highest quality antibody possible.



CDX2 RabMAb



CDX2 Mouse MAb

*Paraffin-embedded human colon tissue stained with Epitomics' CDX2 RabMAb (Cat.# 2475-1) and Vendor A's CDX2 Mouse Monoclonal under optimal conditions*

Find out more @ [www.epitomics.com/advantage](http://www.epitomics.com/advantage)



Antibody Satisfaction Guarantee

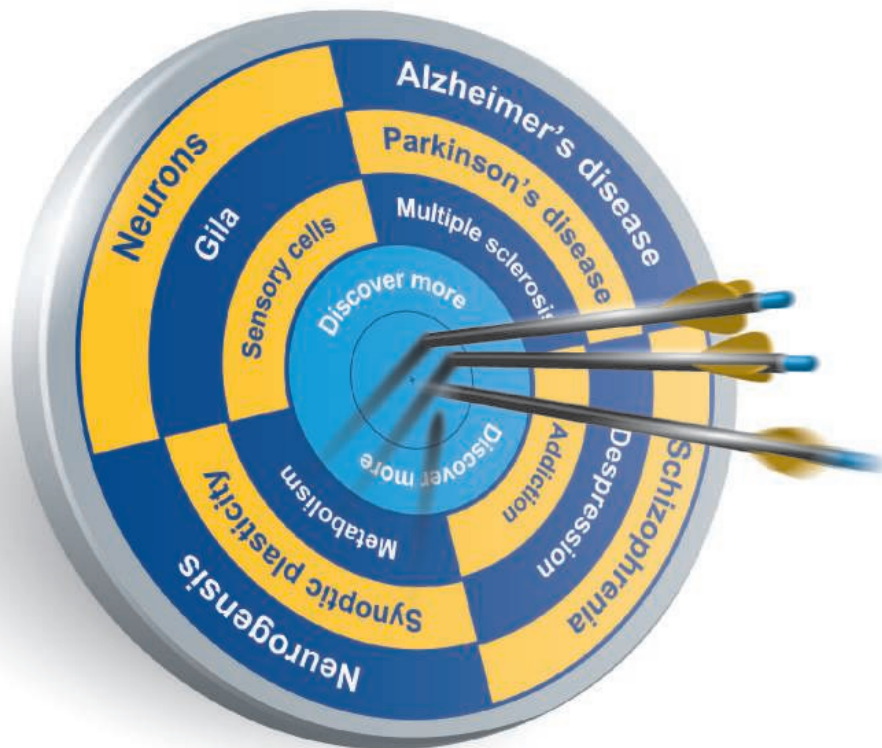
[www.epitomics.com](http://www.epitomics.com)

US & Canada | 1-877-772-2622  
Outside NA | 650-583-6688



# Aim for excellence

**abcam**<sup>®</sup>  
discover more



## Aim...

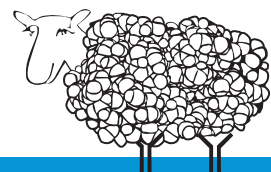
to achieve accuracy using our protocols and troubleshooting tips

## Target...

as many proteins as you need from our extensive catalog

## Succeed...

with the guarantee of our Abreviews & Abpromise



480\_12\_AKR

Discover more at [abcam.com/aimforexcellence](http://abcam.com/aimforexcellence)

The moment your data change  
scientific minds.

**This is the moment we work for.**



// RECOGNITION  
MADE BY CARL ZEISS



Visit Carl Zeiss Microscopy at Neuroscience 2012 in New Orleans or at the Annual Meeting of the American Society for Cell Biology 2012 in San Francisco. You will get a glimpse of Lightsheet Z.1, the unique light sheet microscope, capable of obtaining brilliant time lapse images of whole developing embryos.

[www.zeiss.com/lightsheet](http://www.zeiss.com/lightsheet)



We make it visible.

# Rethink Western blotting. Take protein detection to new dimensions.

**Biology isn't flat—neither are your Westerns.**

Meet the fast, versatile SNAP i.d.<sup>®</sup> 2.0 system, to fully exploit three-dimensional reagent distribution. Unlike conventional Western blotting, where diffusion is the primary means of reagent transport, the SNAP i.d.<sup>®</sup> 2.0 system applies a vacuum to actively drive antibodies and buffers right through the membrane. This advanced technology promotes antigen binding and thorough washing, enabling you to better optimize your Western blotting conditions.

[www.emdmillipore.com/SNAP](http://www.emdmillipore.com/SNAP)



EMD Millipore is a division of Merck KGaA, Darmstadt, Germany





I seek the future.

**MiSeq.** Next-generation sequencing for all you seek.

You want amazing accuracy and performance on your benchtop. Illumina delivers—yet again. The MiSeq Personal Sequencer is the only fully integrated, truly end-to-end benchtop solution around. It's just one more example of why Illumina solutions generate a remarkable 90% of all the world's sequencing data. Discover what's possible.

[www.illumina.com/iseek](http://www.illumina.com/iseek)

**illumina**<sup>®</sup>

# RNA-SEQ ANALYSIS TAKES WAY TOO LONG

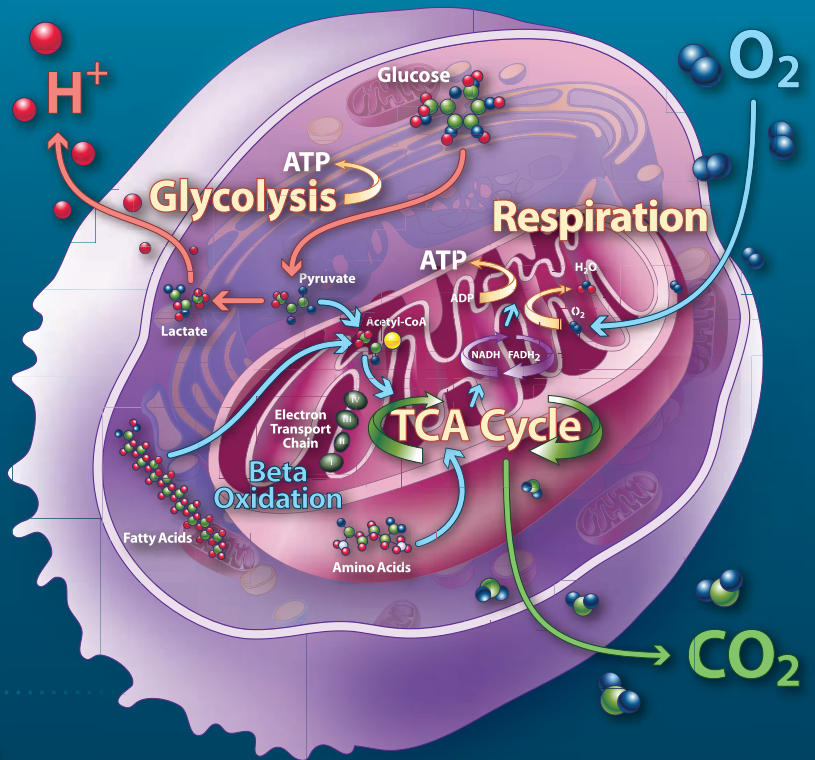
AFFYMETRIX TIME TO INSIGHT



Sequencing is powerful, but it makes genomics harder than it has to be. You need answers now. With Affymetrix<sup>®</sup> microarrays, get efficient analysis and fast results.

**Down to a Science.**

[www.affymetrix.com/downtoascience](http://www.affymetrix.com/downtoascience)



## Develop a new understanding of

THE ROLE OF MITOCHONDRIAL DYSFUNCTION

**in obesity, diabetes, metabolic disorders, and age-related diseases**



### The Seahorse XF Extracellular Flux Analyzer

The XF Analyzer, and XF Stress Test Kits, make cellular bioenergetic studies simple, efficient and user-friendly. The first new in vitro metabolic measurement in 50 years, XF Analyzers non-invasively profile the metabolic activity of cells in minutes, offering scientists a physiologic cell based assay for determination of basal oxygen consumption, glycolysis rates, ATP turnover and respiratory capacity in a single experiment to assess mitochondrial dysfunction.



See what's possible.

Scan this QR code to view videos and see what the XF Analyzer can achieve. Visit [www.seahorsebio.com/science](http://www.seahorsebio.com/science) for more information!

*Seahorse Bioscience*



# Little Genius

## BLItz

BLItz brilliantly packs the power of Dip and Read™ label-free analysis into a personal assay system. Give BLItz a drop of your sample and it does the rest!

- Protein presence/absence in seconds
- Binding kinetics assays at your bench
- Protein quantitation in seconds
- Develop immunoassays in minutes
- Easily analyze crude samples

Cleverly priced under \$20K so you can have your own little genius.

Want to try BLItz in your lab? Visit [BlitzMeNow.com](http://BlitzMeNow.com) or call 855.BLITZ.ME.

**fortéBIO**  
A Division of **Pall Life Sciences**

**PALL** Life Sciences



**eppendorf**  
& **Science**

**PRIZE FOR  
NEURO  
BIOLOGY**

**Congratulations**  
to Dr. Marlene R. Cohen  
Assistant Professor  
University of Pittsburgh  
Winner 2012



## And the Winner is ...

### **Eppendorf & Science Prize for Neurobiology**

Congratulations to Marlene Cohen on winning the 2012 Eppendorf & Science Prize. Dr. Cohen uses the responses of groups of visual neurons to estimate which part of the visual world an animal is paying attention to at any given moment. Her approach provides a new way to study how our mental activity affects what we perceive and how cognitive processes such as attention are controlled.

The annual US\$25,000 Eppendorf & Science Prize for Neurobiology honors scientists, like Dr. Cohen, for their

outstanding contributions to neurobiology research.

Dr. Cohen is the eleventh recipient of this international award. She will be presented with the Prize at a ceremony held during the week of the 2012 Annual Meeting of the Society for Neuroscience in New Orleans.

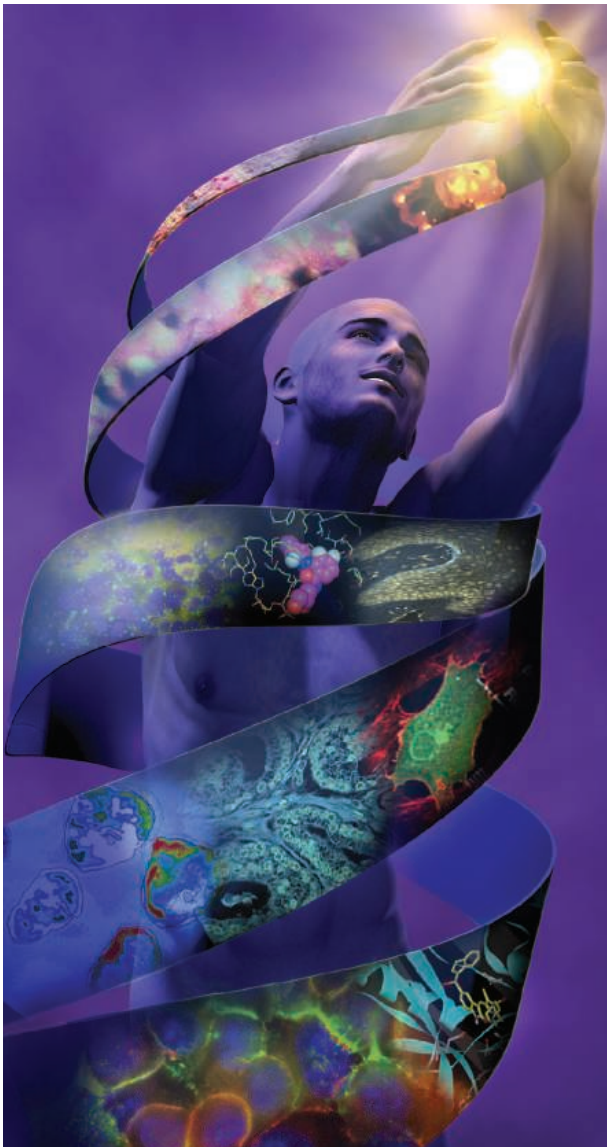
### **You Could Be Next.**

If you are 35 years of age or younger and currently performing neurobiology research, you could be next to win the 2013 Prize. Deadline for entries is June 15, 2013.

Learn more at: [www.eppendorf.com/prize](http://www.eppendorf.com/prize)

**eppendorf**





# ACR

*American Association  
for Cancer Research*

---

## ANNUAL MEETING

---

### 2013

---

**April 6-10, 2013**  
Walter E. Washington  
Convention Center  
**Washington, DC**

---

**It has been said around the world that the AACR Annual Meeting drives the cancer agenda.**

Be a part of the **American Association for Cancer Research's Annual Meeting 2013** so you won't miss:

- The premier meeting in cancer research that brings together more than 17,000 of the best and the brightest in the cancer field from over 60 countries
- More than 6,000 proffered papers and hundreds of invited talks from leading experts
- The latest developments in basic science, translational research, clinical trials, and population sciences
- A multitude of networking events and professional development activities, plus the annual Cancer and Biomedical Research Career Fair

Be sure to submit an abstract and register for this important scientific meeting in cancer research.

**Abstract submission deadline: November 15, 2012**

**[www.aacr.org/AACR2013](http://www.aacr.org/AACR2013)**



# RT and PCR to go

EcoDry™ Premixes are stable  
at room temperature

Store them for easy access



Visit [www.clontech.com/ecodry](http://www.clontech.com/ecodry)  
or call 1.800.662.2566



Clontech Laboratories, Inc.  
A Takara Bio Company

United States/Canada: +1.800.662.2566 • Asia Pacific: +1.650.919.7300 • Europe: +33.(0)1.3904.6880 • Japan: +81.(0)77.543.724  
For Research Use Only. Not for use in diagnostic or therapeutic procedures. Not for resale. Clontech, the Clontech logo,  
and EcoDry are trademarks of Clontech Laboratories, Inc. All other marks are the property of their respective owners.  
Certain trademarks may not be registered in all jurisdictions. ©2012 Clontech Laboratories, Inc.

9.12 US (633505) [www.clontech.com](http://www.clontech.com)

# PICTURE YOURSELF AS A AAAS SCIENCE & TECHNOLOGY POLICY FELLOW

## **Make a Difference.**

Help give science a greater voice in Washington, DC! Since 1973, AAAS Fellows have applied their skills to federal decision-making processes that affect people in the U.S. and around the world, while learning first-hand about the government and policymaking.

## **Join the Network.**

Year-long fellowships are available in the U.S. Congress and federal agencies. Applicants must hold a PhD or equivalent doctoral-level degree in any behavioral/social, biological, computational/mathematical, earth, medical/health, or physical science, or any engineering discipline. Individuals with a master's degree in engineering and three years of professional experience also may apply. Federal employees are not eligible and U.S. citizenship is required.

## **Apply.**

The application deadline for the 2012-2013 AAAS Science & Technology Policy Fellowships is 5 December. Fellowships are awarded in the spring and begin in September. Stipends range from \$74,000 to \$97,000.

*Note: Additional fellowships are available through approximately 30 scientific society partners. Individuals are encouraged to apply with AAAS as well as with any scientific societies for which they qualify.*



*Enhancing Public Policy,  
Advancing Science Careers*

### **Kevin Foster, PhD**

Anthropology, University of Texas at Austin

2009-10 S&T Policy Fellow,  
National Science Foundation,  
Directorate for Education and  
Human Resources, Division  
of Undergraduate Education,  
Math and Science Partnership

Returned to position as  
executive director of the  
Institute for Community,  
University & School  
Partnerships at the  
University of Texas at Austin

Full details at: [fellowships.aaas.org](http://fellowships.aaas.org)



SCIENCE & TECHNOLOGY  
POLICY FELLOWSHIPS



## New Products



### SCALABLE BIOREACTOR SYSTEM

The ambr 250 is a new, automated bioreactor system for parallel fermentation or cell culture, using single-use 250 mL bioreactors controlled by an automated workstation. The system builds on TAP's innovative microbioreactor technology, adding increased fermentation volumes as well as individual bioreactor temperature and impeller control. This allows rapid testing of a range of conditions and microbial strains to select the optimum ones for efficient scalability to large-scale benchtop, stirred tank bioreactors. The microbial bioreactors, which are independently controlled, have a cap for automated sampling and include baffles and a dual Rushton impeller, as well as all gas ( $O_2$ , air,  $N_2$ ), liquid, and sensor connections. This makes them ideal for use in assessing different fermentation parameters with production microbes such as *E.coli*, *Pichia pastoris*, and *Aspergillus*.

**TAP Biosystems**

For info: 302-478-9060 | [www.tapbiosystems.com](http://www.tapbiosystems.com)

### HIGH CONTENT IMAGE ACQUISITION AND ANALYSIS SOFTWARE

The MetaXpress 5.0 High Content Image Acquisition and Analysis Software has been designed to improve the ease and speed of custom analysis using the company's ImageXpress Micro and Ultra Systems. The new software enables user-created analysis to be run on MetaXpress PowerCore Software, which harnesses the speed of parallel processing and instantly cuts analysis time from hours to minutes. An interactive tool incorporated into the software allows users to create custom analysis easily, without resorting to dedicated programming expertise. The system includes a total of 19 predesigned analysis routines, with the facility to freely add in custom steps to create a tailored analysis. MetaXpress 5.0 also features object click-to-find, allowing scientists to rapidly identify objects of interest within their images. Investigators can easily import data from third-party hardware and export measurements to a variety of formats with the new MDCStore Xchange Service plug-in.

**Molecular Devices**

For info: 800-635-5577 | [www.moleculardevices.com](http://www.moleculardevices.com)

### SERUM REPLACEMENT

PluriQ Serum Replacement is an optimized serum-free supplement formulated as a direct replacement for FBS (fetal bovine serum) for culturing healthy, undifferentiated human embryonic stem cells (hESCs) and induced pluripotent stem cells. PluriQ SR has been shown to maintain healthy cell morphology and normal karyotype in hESCs for at least 20 passages in culture. Every lot of PluriQ reagents is tested for quality, purity, and the effective maintenance of pluripotent stem cells over multiple passages to ensure health, morphology, and undifferentiation. PluriQ SR is part of a range of stem cell products that includes feeder cells, recombinant mouse leukemia inhibitory factor (mLIF), media, and freezing solutions that offer reproducible performance and high consistency from lot to lot.

**AMS Biotechnology**

For info: +44-(0)-1235-828200 | [www.amsbio.com/serum-replacement.aspx](http://www.amsbio.com/serum-replacement.aspx)

### DESICCATORS

Low humidity storage of moisture sensitive chemicals, electronics, and other materials can be a challenge, particularly when dealing with large containers or large quantities, but the new Scienceware Grande Desiccators provide users with the extra space they need. Each desiccator comes with two acrylic shelves and can hold up to seven shelves spaced 2 inches apart (extra shelves sold separately). The desiccator cabinet's rugged polycarbonate construction ensures years of reliable service. Exterior dimensions of the Scienceware Grande Desiccators are 66 cm W × 61 cm D × 66 cm H (26 in × 24 in × 26 in) with an interior capacity of 3.6 cu. ft. The cabinets are available in Standard, Gas Purge, or Automatic models, so users can choose the desiccation method that best suits their needs.

**Bel-Art Products**

For info: 800-423-5278 | [www.belart.com](http://www.belart.com)

### HIGH PERFORMANCE CENTRIFUGES

The newly redesigned Avanti J-26S high performance centrifuge combines important environmental benefits with increased BioSafety features. Coupling the J-26S with new 1 L polypropylene bottles furthers sample security and extends the range of biopharmaceutical and research applications. Built upon benchmark performance, the J-26S provides high speed, low heat output, imbalance tolerance, low noise, and a range of ever-expanding separation capabilities. The ergonomic design, featuring lower instrument height and hands-free door operation, remains unchanged. The rotor library includes fixed-angle, swinging bucket, elutriation, continuous flow, and zonal rotors that offer speeds as high as 26,000 rpm and relative centrifugal force (rcf) up to 81,800 × g. Application versatility is built in: The J-26S can process up to 6 L of fermenter output, deliver a subcellular fraction, run 24 microplates at a time, and separate live-cell populations with centrifugal elutriation.

**Beckman Coulter**

For info: 800-742-2345 | [www.beckmancoulter.com](http://www.beckmancoulter.com)

Electronically submit your new product description or product literature information! Go to [www.sciencemag.org/products/newproducts.dtl](http://www.sciencemag.org/products/newproducts.dtl) for more information.

Newly offered instrumentation, apparatus, and laboratory materials of interest to researchers in all disciplines in academic, industrial, and governmental organizations are featured in this space. Emphasis is given to purpose, chief characteristics, and availability of products and materials. Endorsement by *Science* or AAAS of any products or materials mentioned is not implied. Additional information may be obtained from the manufacturer or supplier.



# 2013 AAAS ANNUAL MEETING

## THE BEAUTY AND BENEFITS OF SCIENCE

14-18 FEBRUARY • HYNES CONVENTION CENTER • BOSTON

You are invited to one of the most widely recognized global science gatherings, with hundreds of networking opportunities and broad media coverage. The Beauty and Benefits of Science meeting theme highlights the “unreasonable effectiveness” of the scientific enterprise in creating economic growth, solving societal problems, and satisfying the essential human drive to understand the world in which we live.

### Chair and Co-Chairs



**William H. Press**

AAAS President and Program Chair  
Warren J. and Viola M. Raymer  
Professor in Computer Science  
and Integrative Biology  
University of Texas at Austin



**Drew Faust**

Co-chair  
President  
Harvard University



**Henri Termeer**

Co-chair  
Retired Chairman,  
President and CEO  
Genzyme Corporation

### Confirmed Plenary Speakers



**Robert Kirshner**

Clowes Professor of Science  
Harvard University



**Sherry Turkle**

Abby Rockefeller Mauzé  
Professor of the Social  
Studies of Science and  
Technology  
Massachusetts Institute  
of Technology

Meeting  
Program  
online

### RSVP

Register now and  
reserve hotel rooms at  
[www.aaas.org/meetings](http://www.aaas.org/meetings)

### Confirmed Topical Speakers



**Richard Alley**

Evan Pugh Professor  
of Geosciences  
Pennsylvania State University



**Karl Deisseroth**

Associate Professor  
of Bioengineering  
and Psychiatry  
Stanford University



**Felice Frankel**

Research Scientist  
Center for Materials  
Science and Engineering  
Massachusetts Institute  
of Technology



**Nina Jablonski**

Distinguished Professor  
of Anthropology  
Pennsylvania State  
University



**Chad Mirkin**

George B. Rathmann  
Professor of Chemistry  
Northwestern University



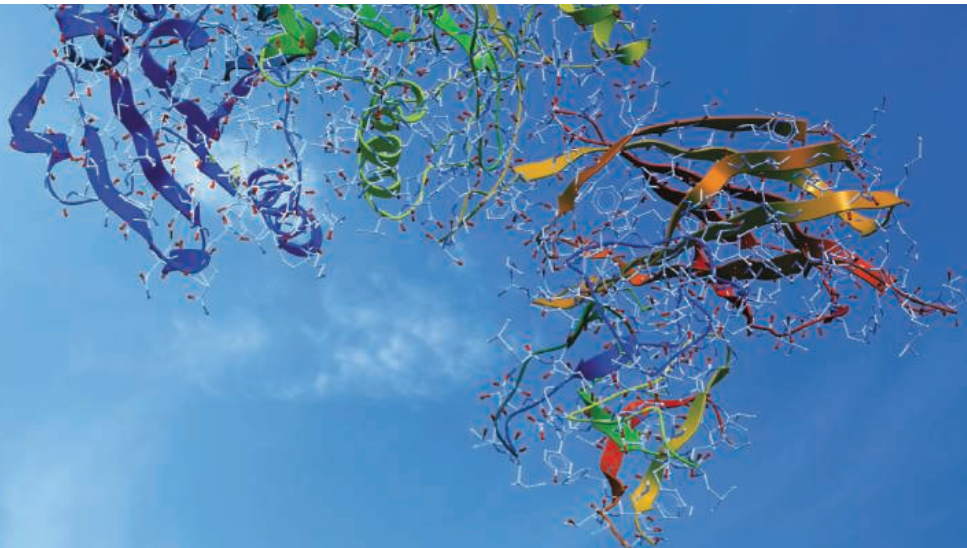
**Peter Norvig**

Director of Research  
Google Inc.

 **AAAS | 2013  
ANNUAL MEETING**  
14-18 FEBRUARY • BOSTON

PHOTO CREDITS: JABLONSKI: HEIDI LEWIS; NORVIG: BART NAGEL; KIRSHNER: LYNN BARRY  
HETHERINGTON; TURKLE: PETER URBAN; BOSTON: DAVID FOX, PHOTOGRAPHER

**gibco**<sup>®</sup>  
by *life* technologies™



# Not just cells. Protein powerhouses.

**Expi293™ Expression System—the most efficient  
protein expression system on the market**

Shop now at [lifetechnologies.com/exp293](http://lifetechnologies.com/exp293)

*life*  
technologies™

For Research Use Only. Not for use in diagnostic procedures. ©2012 Life Technologies Corporation. All rights reserved. The trademarks mentioned herein are the property of Life Technologies Corporation or their respective owners. C025498 0912