

OPERATING INSTRUCTIONS

TRUMMETER PRO PC-SOFTWARE

Reporting and Documentation



VERSION 2.9



Table of contents

Introduction	3
Reporting software for the PC	4
Program installation	4
Starting the program	4
Welcome screen.....	5
Program overview.....	6
Belt Data	7
Preparing belt data	8
Procedure	8
Transferring belt data to the Trummeter	9
Importing/exporting belt data	9
Setting up facilities.....	10
Transferring and managing measurements	11
Transferring measurements from the Trummeter	11
Managing measurements	13
Report - evaluating measurement data	14
Changing the appearance.....	14
Setup	16
General settings, setup	16
Update.....	17
COM Port	18
Licenses	19
Log	20
Exiting the program	20
Manufacturer data.....	20

INTRODUCTION

Thank you for choosing the new Status Pro system - the Trummeter Pro gauge and the associated reporting software.

We hope to be able to fulfill your expectations for this modern measurement system.

Before making any measurements, be sure to read and follow the safety guidelines and precautionary measures. In addition, see the operating instructions in BELT TENSION MEASUREMENT SYSTEM.

We wish you great success in using your new measurement system.



Caution

To connect the Trummeter Pro to a PC, only use the special BG 810000 cable that is supplied.

If a regular RS232 cable is used, the instrument can be damaged.



Note

First input the valid license code for this serial number. **See p. 19.**

Without a valid license, the use of the PC software is limited. No belt data can be stored on the Trummeter; measurements from the Trummeter can not be saved. An error message indicates that the license is missing.

If several instruments are being used, then each instrument (serial number) must have a valid license code.



REPORTING SOFTWARE FOR THE PC

The Trummeter Pro PC-Software is the most important tool for evaluating and documenting the measurements that are performed.



Note

Copy the entire "Trummeter Pro" directory from the supplied software CD into a directory of your choice on your local hard drive.

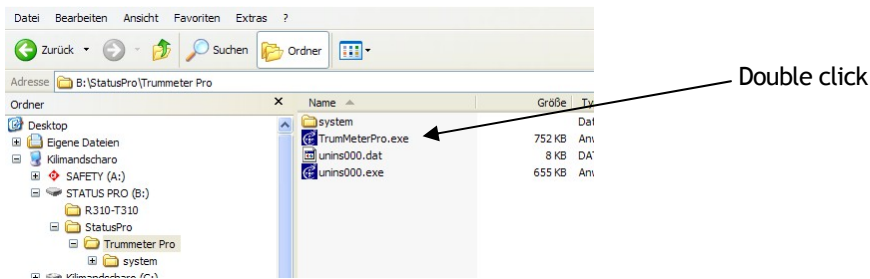
Please consult the continually updated belt database at www.statuspro.de.

Program installation

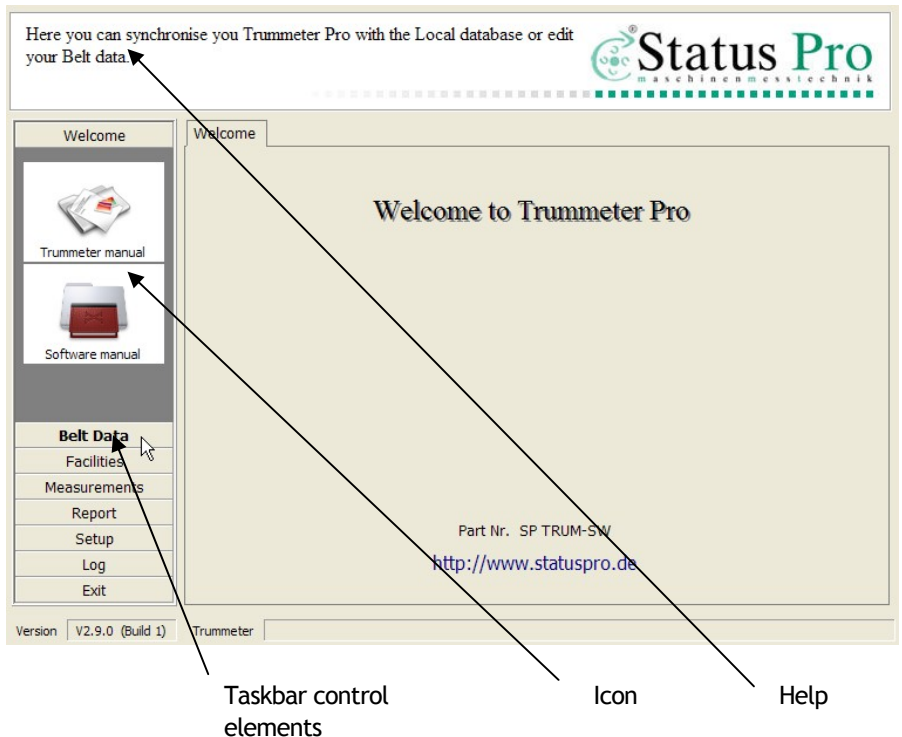
1. Log in on your PC as the administrator.
2. Double click the file named "TrummeterPro Setup.exe".
3. Follow the directions of the setup assistant.
4. If necessary, make a copy of the existing data.
5. Select the installation folder on your hard drive where the program data is to be installed as well as the start menu folder and, if necessary, the Desktop or the Quick Launch toolbar.

Starting the program

1. Switch from the file manager into the "Trummeter Pro" program directory.
2. Double click on "TrumMeterPro.exe"; the program starts.



WELCOME SCREEN



1. The PC-Software is controlled through the control elements ("tabs") of the taskbar on the left side.
2. When the mouse is moved over the control elements, help text is displayed at the top of the program window. Help is available for all of the control elements.
3. The tab over which the mouse pointer is located is indicated in bold letters (example **Belt Data**).
4. Click on an element and the programs open that are represented by icons and that are under the menu item.



PROGRAM OVERVIEW

The Trummeter Pro PC-Software has the following menu items and programs:

1. Welcome
 - Trummeter handbook Opens the handbook (PDF)
 - Software handbook Opens the handbook (PDF)
2. Belt Data
 - from PC Displays the belt database of the PC
 - from Trummeter Opens the Trummeter belt data
 - Import/Export Imports/exports individual belt data sets
3. Facilities
 - Edit Assigns from belt data, "Measurement round"
4. Measurements
 - Trummeter Retrieves the measurements from the Trummeter
 - Manage Structures measurements
5. Report
 - Evaluate Prepares reports
6. Setup
 - General Assigns general settings
 - Update Updates Trummeter software
 - COM Port Selects COM port, searches
 - Licenses Licenses Trummeter Pro PC-Software and activates it
7. Log
 - Delete log Deletes program log files
 - Store log Stores program log files
8. Exit Exits program.

The software version number as well as the status of the connection with the Trummeter Pro can be found in the footer.

BELT DATA

All the important belt data are stored in the Trummeter Pro PC-Software.



Caution

To connect the Trummeter Pro to a PC, only use the special BG 810000 cable that is supplied.

If a regular RS232 cable is used, the instrument can be damaged.

1. In the main screen, click on "Belt Data".
2. The submenu opens. You may select between
 - from PC
 - from Trummeter as well as
 - Import/Export
3. Click on "from PC" to display the belt database that is on the PC. The following screen appears:



vom PC



vom Trummeter



Import / Export

Here you see all the belt type which are currently in your local PC database.

No. belt	Belttype	Weight [g/m]	Optimal W	Low Tol. [%]	High Tol. [%]
1	Op 153 x 2R KB	504	0	15	10
2	Op 153 x 2R RP2	504	900	15	10
3	Op 153 x 2R KB	756	0	15	10
4	Op 153 x 2R RP2	756	900	15	10
5	Op 153 x 4R KB	0	0	15	10
6	Op 153 x 4R KB	1008	0	15	10
7	Op 153 x 4R RP2	1008	900	15	10
8	Op 153 x 4R RP2	1260	900	15	10
9	Op 153 x 4R KB	241	0	15	10
10	Op 153 x 4R RP2	195	900	15	10
11	Op 153 x 5K	0	800	15	10
12	Op 153 x 5 TX M	183	900	15	10
13	Op 20 x 1B	266	0	15	10
14	Op 25 x 1B	420	0	15	10
15	Op 253 x 2R KB	1386	0	15	10
16	Op 253 x 2R RP2	1386	900	15	10
17	Op 253 x 3R KB	2079	0	15	10
18	Op 253 x 3R RP2	2079	950	15	10
19	Op 253 x 4R KB	2772	0	15	10
20	Op 253 x 4R RP2	2772	980	15	10
21	Op 253 x 5R KB	3465	0	15	10
22	Op 253 x 5R RP2	3465	980	15	10
23	Op 253 x 6R KB	575	0	15	10
24	Op 253 x 6R RP2	575	1600	15	10
25	Op 3V x 2R KB	204	300	15	10
26	Op 3V x 2R RP2	204	350	15	10
27	Op 3V x 3R KB	306	300	15	10
28	Op 3V x 3R RP2	306	350	15	10

rename

delete

belt data set name
create new data set

delete belt in the
data set
create new belt in
the data set

delete all belts in
Trummeter

load displayed belt
into Trummeter

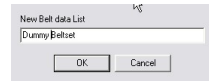
store belt in
database



PREPARING BELT DATA

Procedure

1. Click on "Create new data set".
2. In the field, enter the name of the new belt data set. The new belt data set is created; it does not yet contain any belt data.
3. Open, for example, the Optibelt data (Gates, Dunlop). Confirm with "YES".
4. Sort the data for a better overview by, for example, clicking on the belttype in the header.
5. In the database, select "your" belt, press the right mouse button.

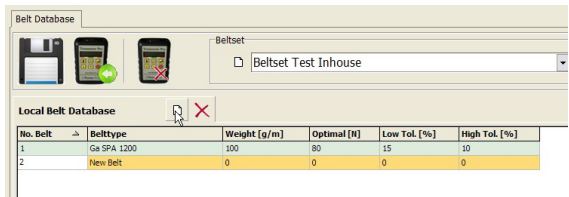


No. Belt	Belttype	Weight [g/m]	Optimal [N]	Low Tol. [%]	High Tol. [%]
70					
71	Renumber	74	350	15	10
72	Delete All	74	350	15	10
73	Delete	326	275	15	10
74	Duplicate (next free Position)	489	275	15	10
75	Insert new free	652	275	15	10
76	Copy to...		275	15	10
77	Op A/13 x 1B		275	15	10
78	Op AA x DK		0	15	10
79	Op AX x S TX M	99	350	15	10

6. Select "Copy to..." and copy the selected belt in the new data set (in the example, Dummy Beltset).
7. Click on the floppy disk symbol to store.
8. The selected belt data is now stored in the belt data set that was created.

Alternative: Manual input of belt data

1. Click on "Create new belt" to create a new, empty belt data set.
2. Click on the assigned box.
3. Input the belt data manually.
 - No. Belt
 - Belttype
 - Weight
 - Optimal
 - Low Tol.
 - High Tol.



TRANSFERRING BELT DATA TO THE TRUMMETER

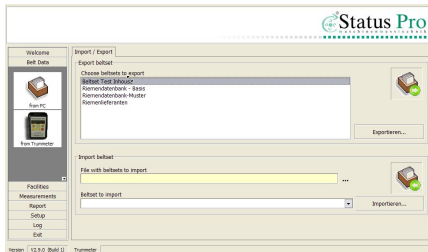
1. Connect the Trummeter to the PC; the connection status is displayed in the footer.
For example "Trummeter connected ID: "....." Port: COM1".
2. Click on "Transfer data to Trummeter".
3. Confirm by clicking on "Yes".
4. The prepared data is copied to the Trummeter and is available for the measurements.



IMPORTING/EXPORTING BELT DATA

For safeguarding purposes, you may export your own belt data and also import existing belt data sets for use in the Trummeter Pro.

Click on the Import/Export icon.



1. At the top, select, for example, the belt data set to be exported and then click on "Export...".
2. Provide a meaningful name to the file to be exported and confirm with OK. The file is stored in the selected directory under the selected name.
3. During "Import belt data set", import new or stored belt data sets by clicking on the button to the right of the field for the name to select the belt data set.

The selected belt data set is displayed.



SETTING UP FACILITIES

For an optimal overview, it is advisable to select the "Facilities" tab and create the measurement data sets there, for example, for the individual measurement rounds.

This has the additional advantage that in the report - that is, in the overview of the measurements that have been made - you will have the measurement values for certain machines and facilities assigned. Click on the control element named "Facilities"

Version | V2.9.0 (Build 1) | Trummeter

Labels on the right side of the screenshot:

- Rename
- Delete
- Input name
- Create new data set
- Delete line
- Insert blank line
- Print list
- Store table

1. Click on "Create new data set" and input the name.
2. Click on "Insert blank line".
3. Click on "Facility name" and input a unique name for this measurement data set (for example, Hall 2, Ventilator 456).
4. To store your inputs after you have input all the measurement data sets and facilities, click on the floppy disk symbol.

TRANSFERRING AND MANAGING MEASUREMENTS

The control element named "Measurements" is used for transferring the measurements that have been made from the Trummeter Pro to the PC-Software as well as for managing individual measurements. Click on the control element named "Measurements".

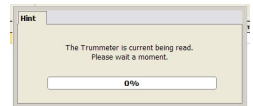
TRANSFERRING MEASUREMENTS FROM THE TRUMMETER

1. Connect the Trummeter to the PC; the connection status is displayed in the footer.
For example "Trummeter connected ID: "...." Port: COM1".

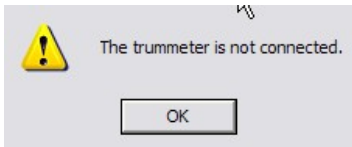


Note

For this purpose, only use the special BG 810000 cable that has been supplied.

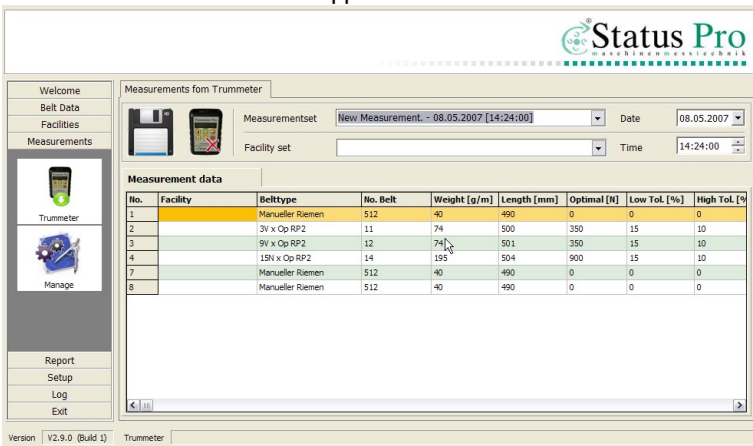


2. Click on the Trummeter symbol; the measurements are transferred.
3. If the following message appears, then check to ensure that a proper connection has been made:

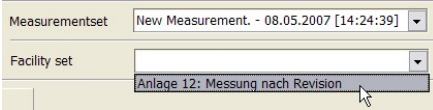




4. The measurement data screen appears.

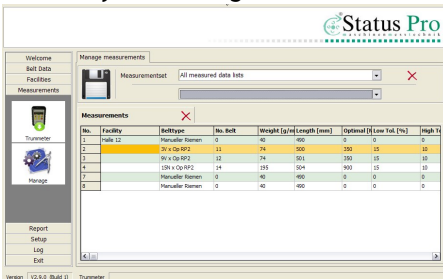


5. The individual measurements are listed in tabular form. At the top of the screen, the functions named "Store", "Delete" as well as the measurement set name, the facility set and the current date and time are displayed.



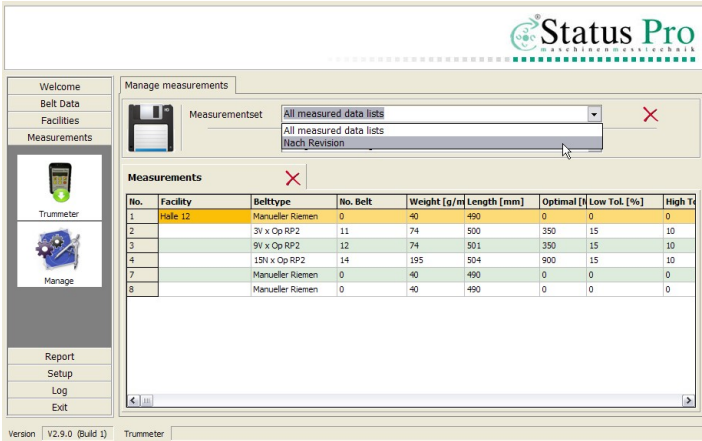
6. You may now assign the measurement data to a stored facility set. This facilitates an overview and creates a clear link between the measurement value and, for example, the machines and facilities of a measurement round. Click on "Facility set", or on the arrow as shown, and select a facility set.

7. The facility is now assigned to the measurement value in the table.



MANAGING MEASUREMENTS

1. Click on "Manage".



The screenshot shows the 'Manage measurements' window in the Status Pro software. The window title is 'Manage measurements'. On the left is a sidebar with buttons for 'Welcome', 'Belt Data', 'Facilities', 'Measurements', 'Trummer', and 'Manage' (which is highlighted). Below these are 'Report', 'Setup', 'Log', and 'Exit'. The main area contains a 'Measurementset' dropdown menu with options: 'All measured data lists', 'All measured data lists', and 'Nech Revision'. Below this is a table titled 'Measurements' with the following data:

No.	Facility	Belttype	No. Belt	Weight [g/m]	Length [mm]	Optimal [H]	Low Tol. [%]	High Tol. [%]
1	Halle 12	Manueller Riemen	0	40	490	0	0	0
2		3V x Op RP2	11	74	500	350	15	10
3		9V x Op RP2	12	74	501	350	15	10
4		15V x Op RP2	14	195	504	900	15	10
7		Manueller Riemen	0	40	490	0	0	0
8		Manueller Riemen	0	40	490	0	0	0

At the bottom of the window, it shows 'Version | V2.9.0 (Build 1)' and 'Trummer'.

2. Select a measurement data set and assign a facility set to the measurement data set.
3. You may manually assign a facility to a measurement. Click on the box and input the facility name and, if necessary, additional details.
4. Next, click on the floppy disk symbol to store your input together with the measurements.



REPORT – EVALUATING MEASUREMENT DATA

The control element named "Report" is used for evaluating and documenting the measurements that have been performed. Click on the control element named "Report".

Change the Report Title attributes

Report image (click to change)

Report title
[Measurement File for Backup]

Adressblock

Report footer
Status Pro Maschinenmesstechnik GmbH - Mausegatt 19 - D-44866 Bochum - Telefon: + 49 (0) 2327 - 9881 - 0 / Fax: + 49 (0) 2327 - 9881 - 81

Measurement set
All measured data lists

No.	Facility	Belttype	No. Belt	Weight [g/m]	Length [mm]	Optimal [N]	Low Tol. [%]	High Tol. [%]	Tension [N]	Ev
1	Palle 12	Manusfeler Riemen	0	40	490	0	0	0	4.1	BA
2		3V x Op RP2	11	74	500	350	15	10	11.1	BA
3		9V x Op RP2	12	74	501	350	15	10	23	BA
4		15V x Op RP2	14	195	504	500	15	10	59.2	BA
7		Manusfeler Riemen	0	40	490	0	0	0	101.4	BA
8		Manusfeler Riemen	0	40	490	0	0	0	0	BA

Show Report

Version | V2.9.0 (Build 1) | Trummeter

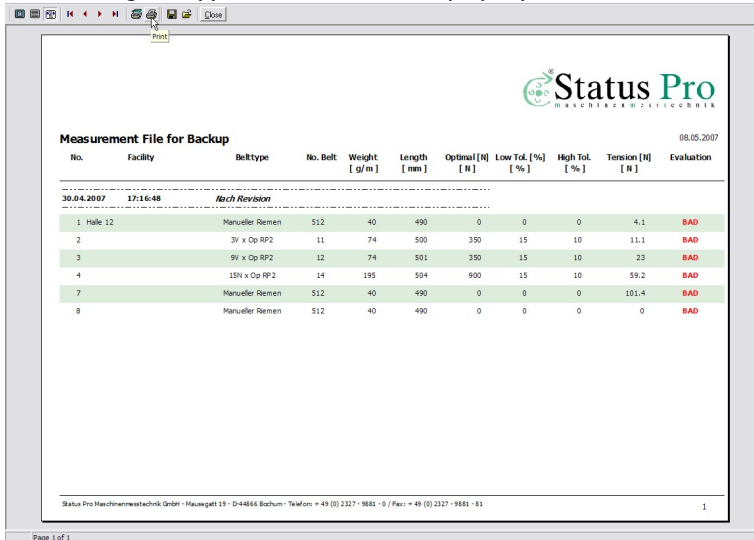
CHANGING THE APPEARANCE

You may change the following entries to set the appearance of the report to the specifications required by your company:

- Reports - allowable formats: JPG, BMP, ICO, EMF, WMF
- Title - Report heading (click on "f" to select the print type, etc.)
- Address block - Company address
- Footer - Input footer (click on "f" to select the print type, etc.)
- Measurement data set - Selection of the measurement data set that is to be evaluated

Click to modify a particular item.

After setting the appearance, click on "Display report".



Measurement File for Backup 08.05.2007

No.	Facility	Belttype	No. Belt	Weight [g/m]	Length [mm.]	Optimal [N]	Low Tol. [%]	High Tol. [%]	Tension [N]	Evaluation
30.04.2007 17:16:48 Mech Revision										
1	Halle 12	Manueller Riemen	512	40	490	0	0	0	4.1	BAD
2		3V x Op-PP2	11	74	500	350	15	10	11.1	BAD
3		9V x Op-PP2	12	74	501	350	15	10	23	BAD
4		15N x Op-PP2	14	195	504	900	15	10	59.2	BAD
7		Manueller Riemen	512	40	490	0	0	0	101.4	BAD
8		Manueller Riemen	512	40	490	0	0	0	0	BAD

Status Pro Maschinenmesstechnik GmbH - Hauptgäß 19 - D-48666 Bochum - Telefon +49 (0) 2327-9881-0 | Fax +49 (0) 2327-9881-61

Page 1 of 1

The evaluation appears in a window.

Using the control elements in the top line, you may do the following with the report:

- Zoom to fit - zoom to fit the size of the window
- 100%
- Zoom to width - scale to width
- |◀ ◀ ▶ ▶| - page forward, page backward
- Printer setup - set up the printer
- Print - start printing
- Save report - store as QRP file
- Load report - open report data
- Close - close report



SETUP

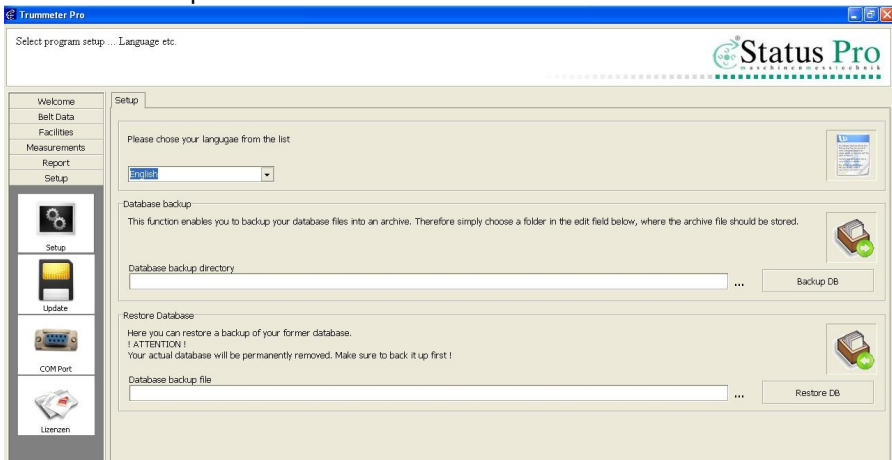
In the setup, you may select the PC-Software language, update the Trummeter Pro as well as select or let it search for the COM port for the communications between the PC and the Trummeter Pro. You can also input a valid license code to activate the PC-Software which allows you to fully use it.

A license is necessary for each instrument (serial number).
Click on the control element named "Setup"



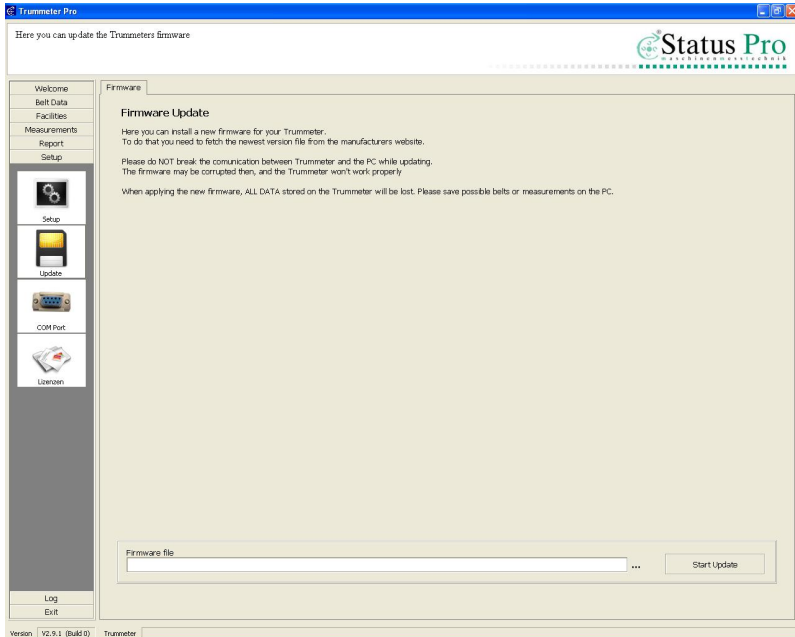
GENERAL SETTINGS, SETUP

1. Under "General", select the language, input the database backup directory and start a backup or restore the database from a file in the archives.



UPDATE

1. Click on the "Update" icon to perform a software update (firmware update) of the connected Trummeter Pro.



2. Follow the instructions on the screen.
3. Click on "... " to select the current firmware.
4. Click on "Start update" to start updating.



Note

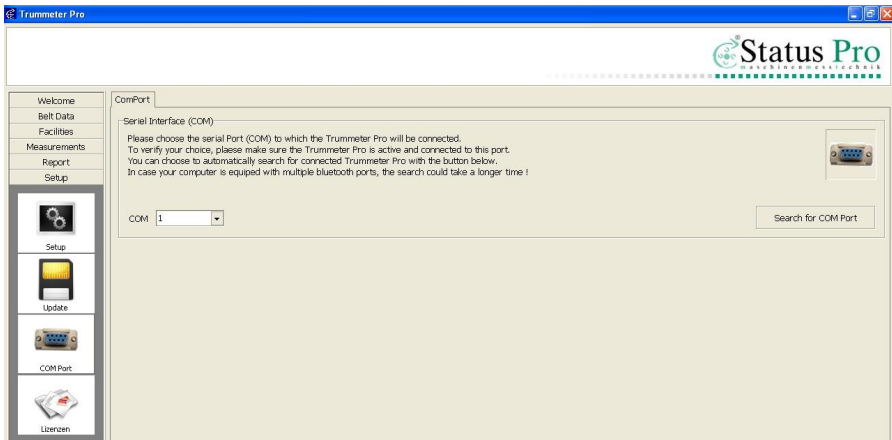
Do **not** separate the Trummeter from the PC (or data cable) when updating.
 Do **not** switch off the Trummeter.

If the updating procedure has been started, then **ALL DATA** on the Trummeter will be lost. Please first store your measurement data on the PC.



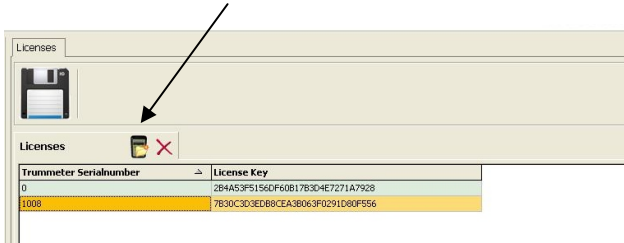
COM PORT

1. Click on the "COM Port" icon to configure the communications between the PC and the connected Trummeter Pro.
2. In addition, connect the Trummeter Pro to the serial interface and switch it on.
3. If known, select the COM Port manually or let the software automatically seek and register the Trummeter Pro.
4. After the end of the search, an information window appears and the port is selected in the list.



LICENSES

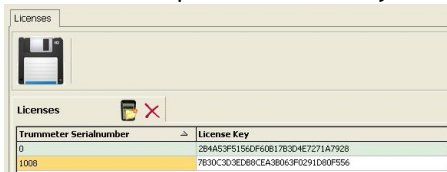
1. Click on the "Licenses" icon to input the license for the PC-Software. You will obtain the code from Status Pro.
2. In addition, connect the Trummeter Pro to the serial interface and switch it on.
3. Click on the Trummeter symbol to read the instrument serial number.



4. After the serial number is displayed, it is registered in the list.



5. Enter a valid license code for this serial number in the field for the license code. Then press the ENTER key.



6. Click on the diskette symbol to store the assignment.
7. If you wish to delete an entry, mark it in the license list and then click on the X symbol.



Note

Without a valid license, the use of the PC software is limited.

No belt data can be stored on the Trummeter, measurements from the Trummeter can not be saved. An error message indicates that the license is missing.

If several instruments are being used, then each instrument (serial number) must have a valid license code.



LOG

The Log function documents system messages from the PC-Software in the background.

The Log is used for administration and information or support through Status Pro.

EXITING THE PROGRAM

Click on "Exit" to leave the PC-Software. Next, click on the "Exit" icon.

MANUFACTURER DATA

Publication No. HB 134E

5th Edition, March 2009

Copyright 2009

Status Pro Maschinenmesstechnik GmbH

Mausegatt 19

De-44866 Bochum

All rights reserved. This handbook or parts thereof may not be copied or reproduced in any other manner without the prior consent of Status Pro GmbH. The technical accuracy and completeness remain reserved and can be changed without notification. Comments on any errors in this handbook are welcome at any time.

www.statuspro.de

info@statuspro.de