

SERVICE INSTRUCTIONS

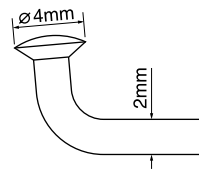
SI-24T0A

Directional Hub Assembly Guide

Before use, read these instructions carefully, and follow them for correct use.

Note

- Use a straight or butted #14gauge spokes.

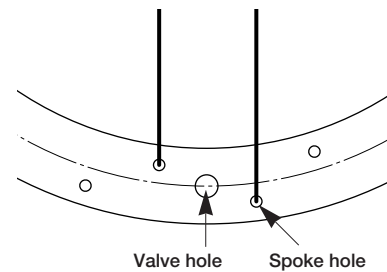


- Use French Type rim (F2) which have the first spoke hole on the right side of the valve staggered down.

<French Type rim>

■ F2

As seen from wheel center

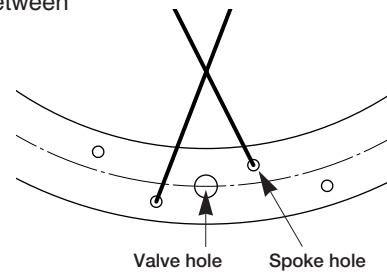


- If you use European Type rim as shown in illustration, the valve hole will be in between the crossed spokes.

<European Type rim>

■ F1

As seen from wheel center



SHIMANO®

SHIMANO AMERICAN CORPORATION
One Holland Irvine CA 92618 U.S.A. Phone 949-951-5003

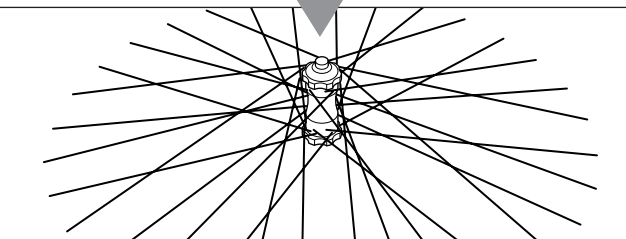
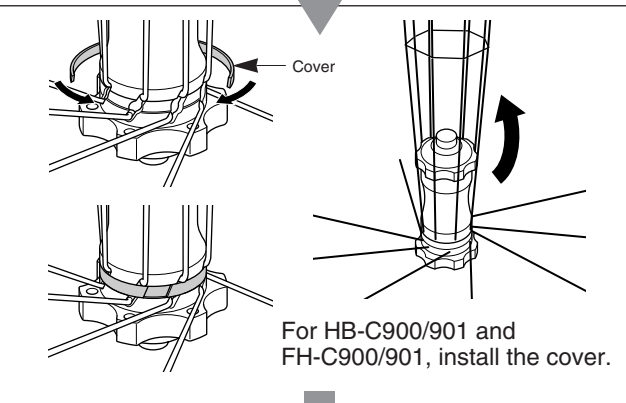
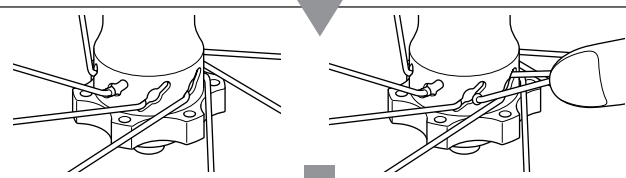
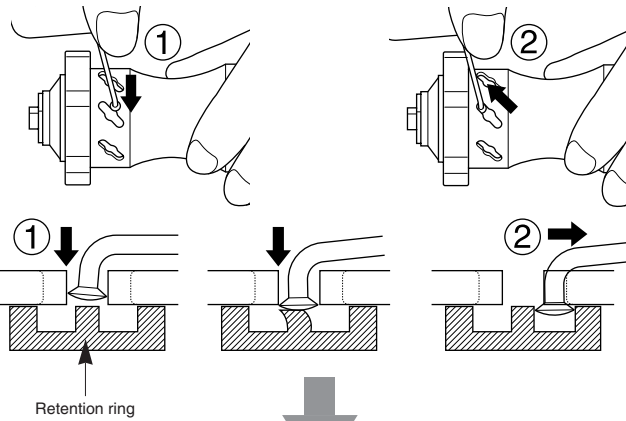
SHIMANO EUROPA
Industrieweg 24 NL-8071 CT Nunspeet Holland Phone 31-341-272222

SHIMANO INC.
77 Oimatsu-cho 3-cho Sakai Osaka 590-8577 Japan Phone 0722-23-3243

Please note: specifications are subject to change for improvement without notice. (English)
© Jul. 2000 by Shimano Inc. XBC SZK Printed in Japan

These service instructions are printed on recycled paper and can be recycled again

Spoke lacing



Wheel building

