

DEORE XT Rear Disc Brake

**BR-M755** Brake Caliper

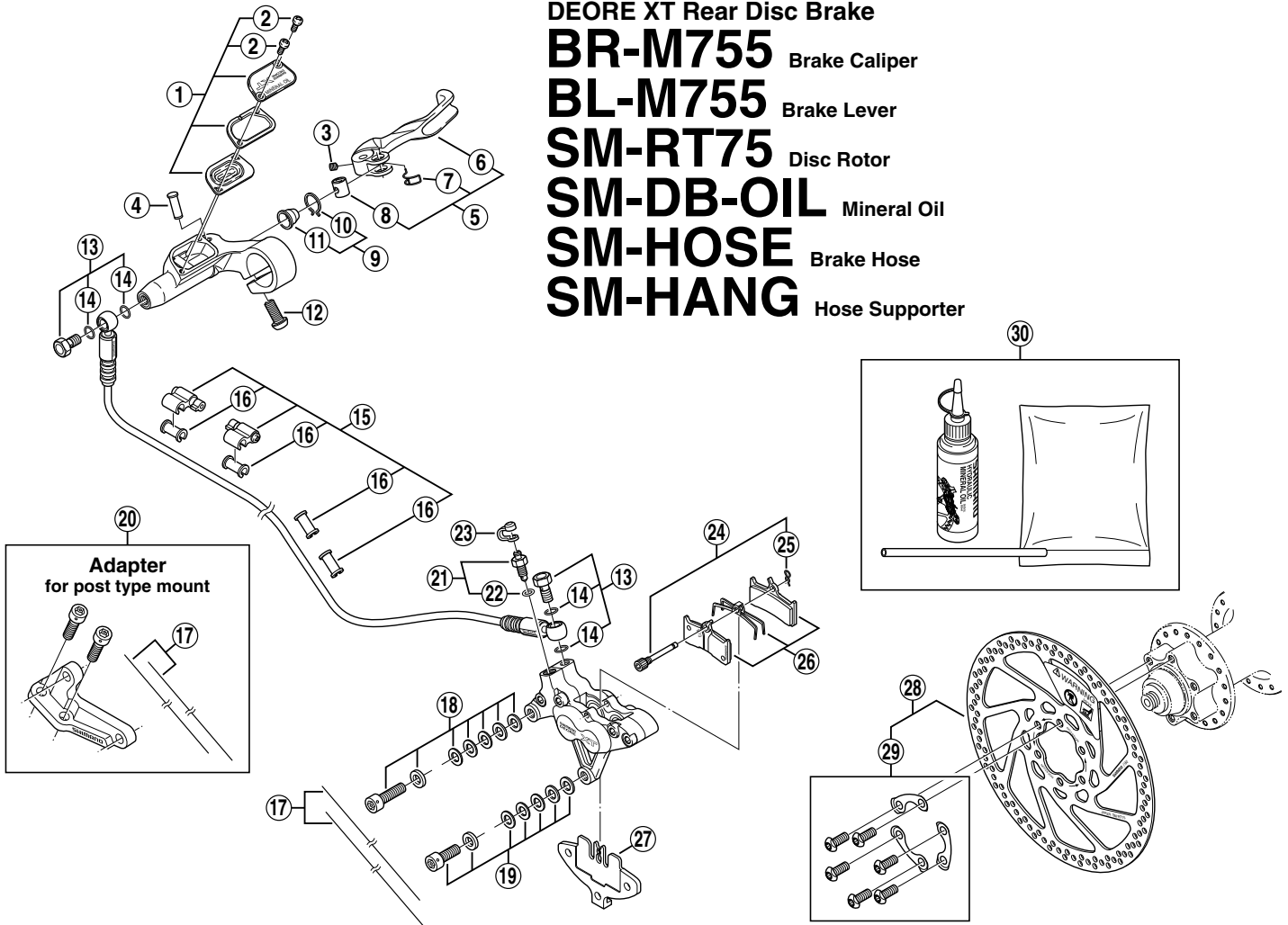
**BL-M755** Brake Lever

**SM-RT75** Disc Rotor

**SM-DB-OIL** Mineral Oil

**SM-HOSE** Brake Hose

**SM-HANG** Hose Supporter



Q'TY	ITEM NO.	SHIMANO CODE NO.	DESCRIPTION
	1	Y-8SY 98030	R.H. Lid Unit
	2	Y-8SY 24000	Lid Fixing Screw (M3 x 8)
	3	Y-6AR69000	Lever Axle Fixing Bolt
	4	Y-8SY 98040	Lever Axle
	5	Y-8SY 98050	Lever Unit
	6	Y-8SY 03000	Lever Member
	7	Y-8SY 13000	Boss Spring
	8	Y-8SY 98060	Reach Adjusting Boss
	9	Y-8SY 98070	Boot & Stopper
	10	Y-8SY 30000	Boot Stopper
	11	Y-8SY 17000	Boot
	12	Y-8SB 10000	Clamp Bolt (M6 x 14.8)
	13	Y-8SY 98020	Banjo Bolt & O-Ring
	14	Y-8SY 28000	O-Ring
	15	Y-830 98010	Hose Supporter Unit
	16	Y-830 00050	Hose Clamp
	17	Y-8B2 98010	Wire (2 pcs.)
	18	Y-8B2 98020	Caliper Fixing Bolt Unit B (M6 x 21)
	19	Y-8B2 98030	Caliper Fixing Bolt Unit A (M6 x 16.5)
	20	Y-8B2 98070	Adapter Unit for post type mount
	* 21	Y-8B2 98080	Bleed Nipple (8 mm) & Seal Ring (φ7.5 mm)
	* 22	Y-8B2 23000	O-Ring (φ7.5 mm) for Bleed Nipple
	23	Y-8B2 14000	Bleed Nipple Cap
	24	Y-8B2 98050	Pad Axle & Snap Ring
	25	Y-8B2 12000	Snap Ring
	* 26	Y-8B2 98060	Metal pad (M03) & Spring (high performance)
		Y-8B2 98090	Resin pad (M04) & Spring (touring)
	27	Y-8B2 30000	Pad Spacer
	28	Y-818 98010	Disc Rotor Unit (φ160 mm)
	29	Y-818 98030	Disc Rotor Fixing Bolt & Plate
	30	Y-839 98010	Mineral Oil Bleed Kit (50 ml)