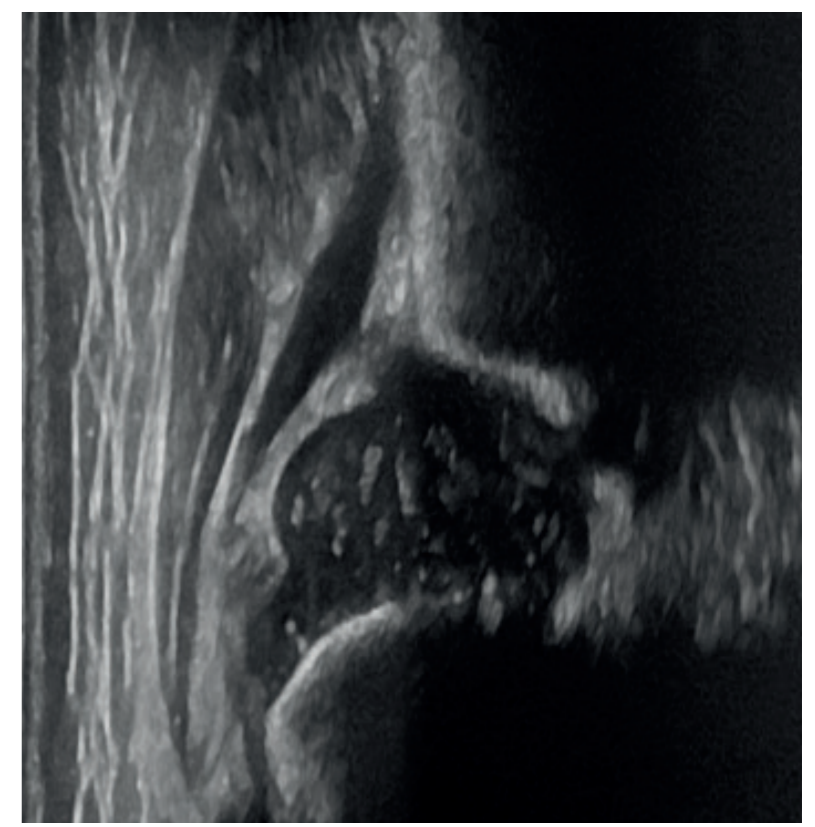
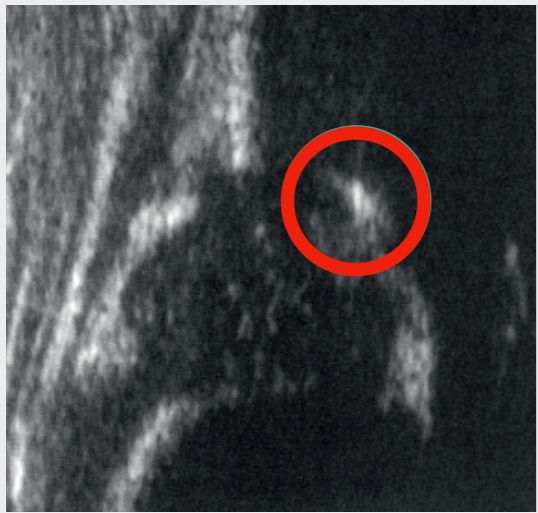


SVUPP  
ASEPA  
ASEPP



# SVUPP\* ABCD DDH-GRUPPEN

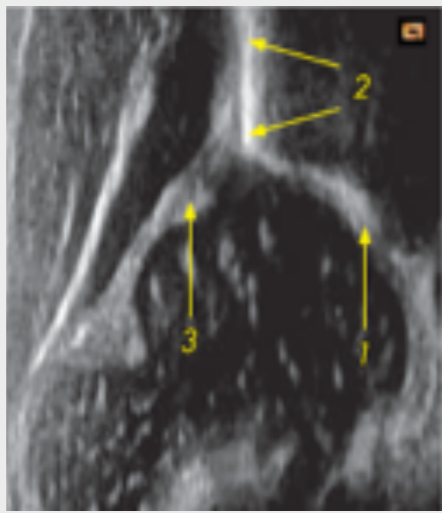
Thomas Baumann<sup>1</sup> Raoul Schmid<sup>2</sup> Bayalag Munkuu<sup>3</sup> Stefan Essig<sup>4</sup> Alexandra Goll<sup>5</sup> Corinne Wyder<sup>6</sup> Julia Stettler<sup>7</sup>



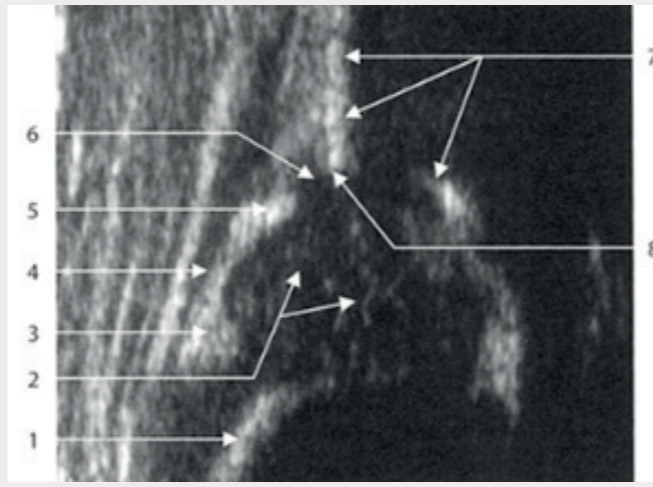
Unterrand os ilium



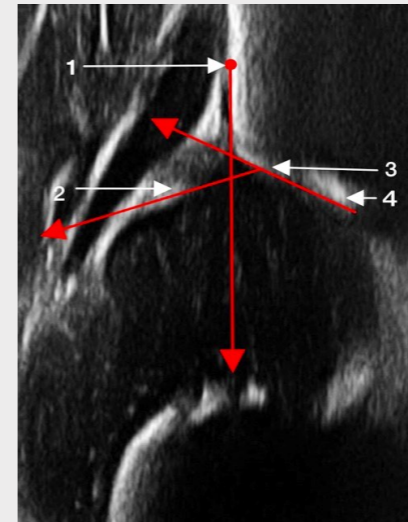
Unterrand → freeze!



**3 Landmarks:**  
1. Unterrand  
2. Os Ilium  
3. Labrum



**Anatomische Identification:**  
1. Knorpel-Knochengrenze  
2. Femurkopf  
3. Umschlagsfalte  
4. Kapsel  
5. Labrum  
6. Knorpeliges Pfannendach  
7. Os Ilium  
8. Knöcherner Erker

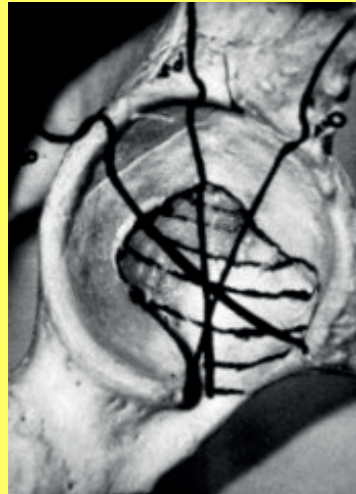


**Linien & Winkel:**

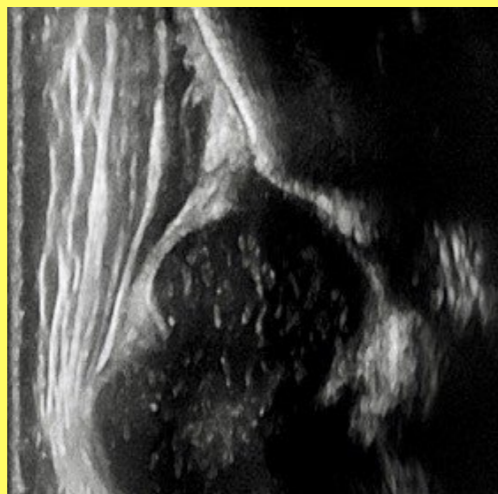
- 1. Z-Punkt
- 2. Labrum
- 3. Knöcherner Erker
- 4. Unterrand Os Ilium
- $\alpha$ : Grundlinie & Knochendachlinie
- $\beta$ : Grundlinie & Ausstellinie

## Schlüsselpunkte

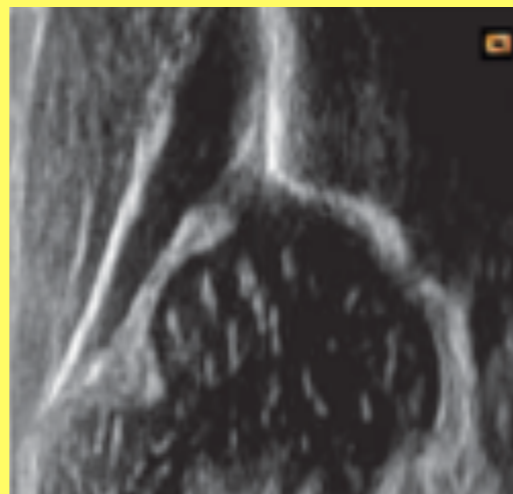
- Linear Schallkopf
- 2 Bilder pro Hüfte
- Seite und Diagnose eingeben (Hotkeys)
- Brauchbarkeitsprüfung
- Messung
- Upload (SVUPP-Exchange®)
- Feedback erhalten



Schnittebenen



zu ventral

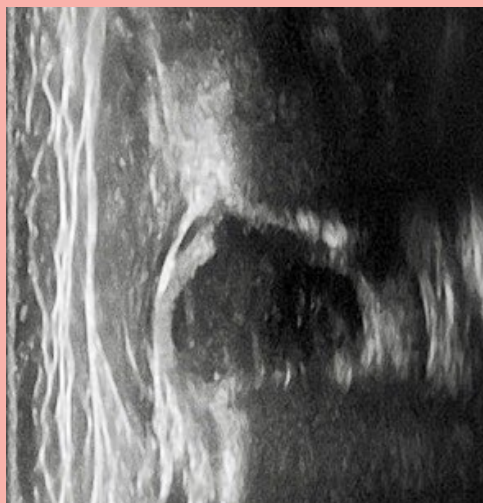


richtig

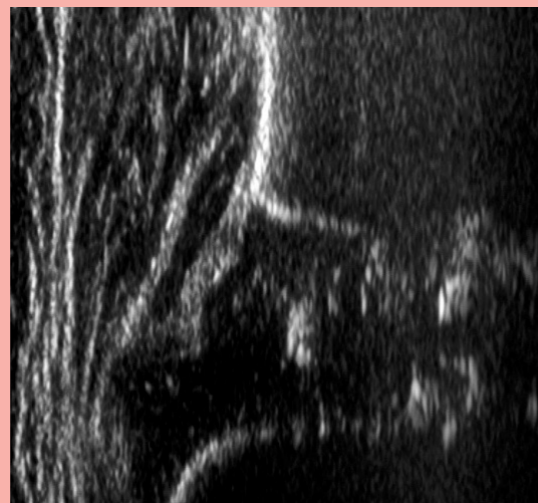


zu dorsal

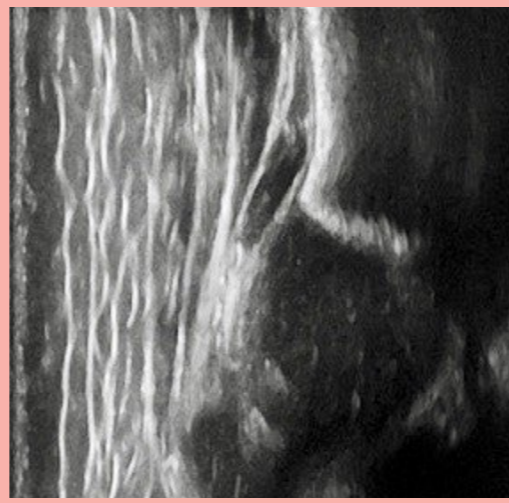
## Schnittebenen



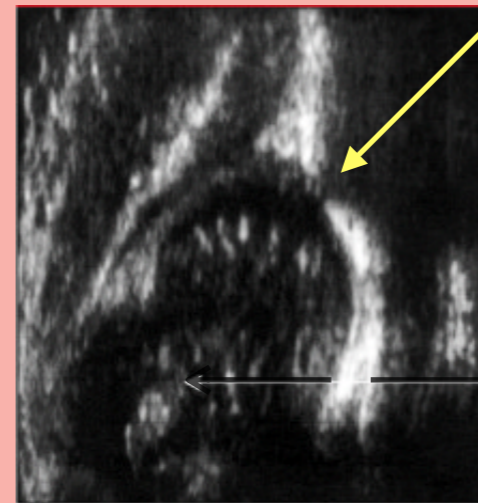
ventro - dorsal



cranio - caudal

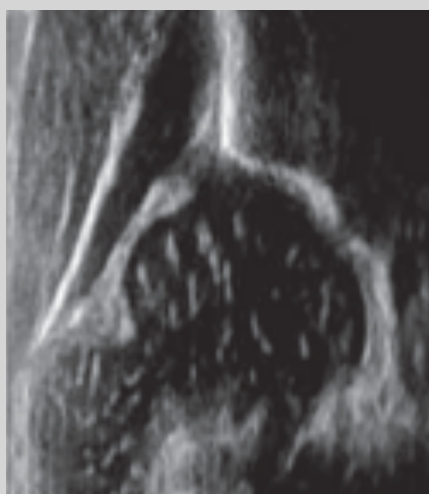


dorso - ventral

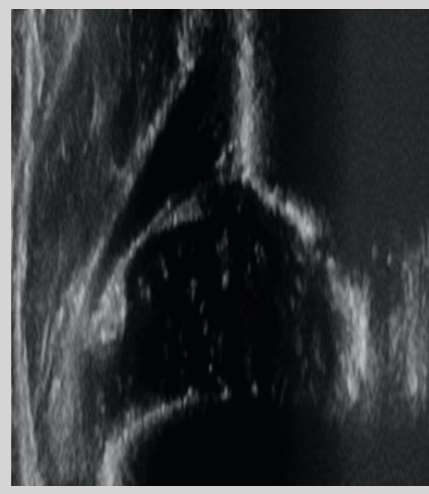


caudo - cranial  
→ Baumann Zeichen!

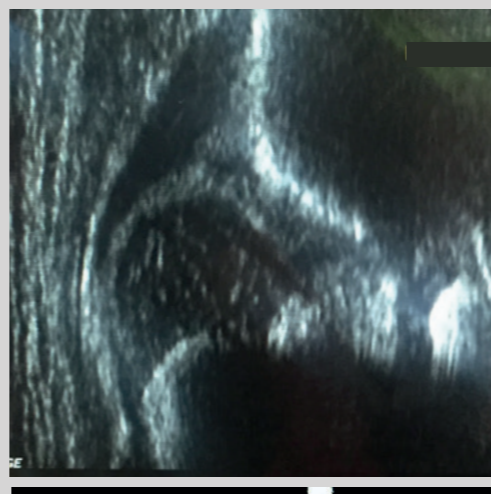
## Kippfehler



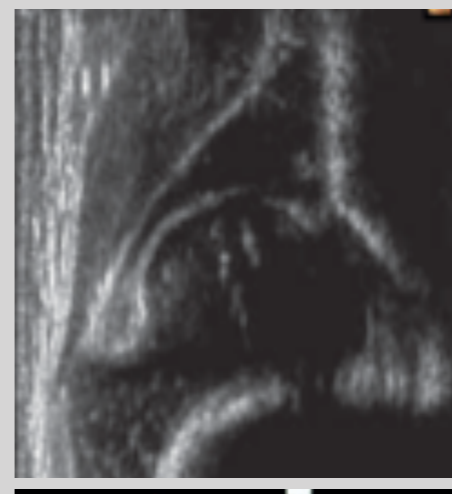
Gruppe A



Gruppe B

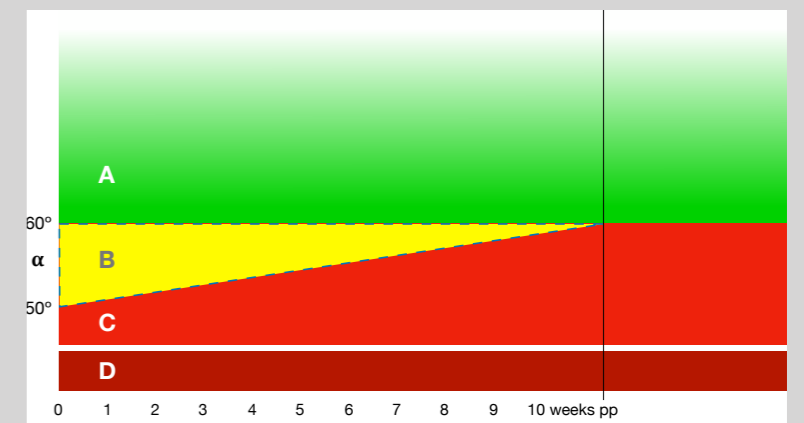


Gruppe C



Gruppe D

## ABCD Gruppen



entlassen

nachkontrollieren

behandeln (Tübingerschiene)

Therapie