

Scanning IR Spectrophotometer

Double beam performance at a single beam price!

- Touch screen display lets you view spectra and run survey scans without a PC
- Display measurement values as ratios in either percent transmission or absorbance

Simply stated, this is the easiest IR spectrophotometer to operate and maintain! Advanced self-help menus guide you every step of the way. Touch-screen display lets you set all instrument parameters for operation and rapid data collection.

High energy optical design and a sensitive DTGS detector provides excellent resolution over the full infrared range. Maximum performance is achieved with a fast scanning mechanism that is completely microprocessor driven—you get dual-beam capabilities with just a single beam optical bed. Display simultaneously indicates wavelength, transmittance or absorbance, scan type, scan time, and response time in seconds.

Easy Scan software for Windows® (included) enables the spectroscopist to view and save spectra, to collect and store data, to interface to a computer via USB or bidirectional RS-232, or connect an optional recorder for hard copy of results.

Optional advanced software package for Windows® provides you with comprehensive instrument control, data manipulation, graphs, and library search capabilities. Order optional software below.

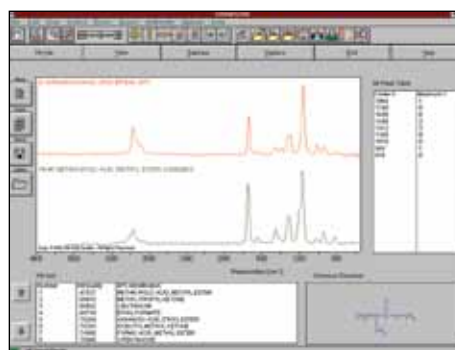
What's included: Easy Scan software, RS-232 cable, and 6-ft (1.8-m) power cord with plug.



Scanning IR spectrophotometer 83000-00 is ideal for quality control, education, or research labs



Set all instrument parameters and view spectra with the touch-screen display



Optional IR software 83001-27 adds potential graphics and analysis capability.

Catalog number	TW-83000-00
Type/model	Scanning IR spectrophotometer
Spectral range	4000 to 600 cm^{-1}
Spectral accuracy	$\pm 3 \text{ cm}^{-1}$
Scan speed	3-, 6-, 12-, or 24-minute scan periods from 4000 to 600 cm^{-1}
Source lamp	Nichrome-wound ceramic core
Display	LCD touch screen
Sample compartment	150-mm square
Detector	Deuterated tri-glycide sulfate (DTGS)
Output	0 to 1 VDC; RS-232, USB
Dimensions (W x H x D)	26 $\frac{1}{4}$ " x 7 $\frac{1}{4}$ " x 15 $\frac{1}{4}$ " (65.7 x 18.4 x 38.7 cm)
Power	115/230 VAC, 50/60 Hz, 150 W
Price	



Optional IR Software

GRAMS/AI (v 7.0) for Windows® adds versatile graphics capability to your IR analysis. It includes curve fitting, integration, data subtraction, peak picking, and other powerful functions and procedures. Version 7 enables compliance with the 21 CFR, part 11 mandate of the FDA—protocols for electronic record keeping, securities, signatures, and more. Compatible with Windows 2000, 95/98, and NT version 4.0 and above. Windows 2000 or XP is required for 21 CFR part 11. GRAMS/AI can be used to analyze data from nearly any instrument producing spectra. Call our Application Specialists for information on economical expansion of GRAMS/AI to multiple users with purchase of "My Instrument" software seats.

TW-83001-27 GRAMS/AI (v 7.0) for Windows®

Find MORE!

For IR accessories, see page 1593 or coleparmer.co.uk