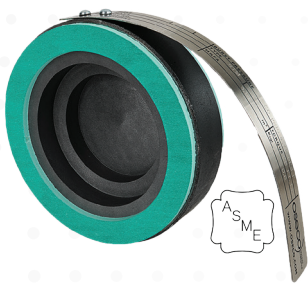


GRAPHITECH

GRAPHITE RUPTURE DISCS

Holderless, resin-impregnated graphite rupture discs for use in highly corrosive processes.

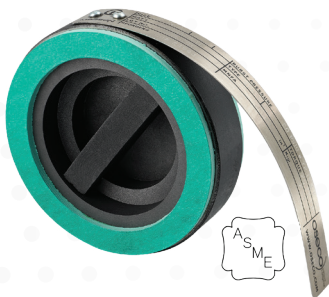
GTM



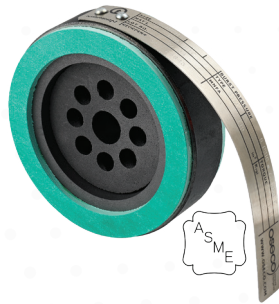
GTI



GTMV - BAR



GTMV - DIAL



Oseco's GraphiTech rupture discs require no holder and are mounted directly between ANSI flanges. The discs are supplied with non-asbestos inlet and outlet gaskets, and an optional armored ring is available for higher pressures.

GraphiTech Rupture Discs Available:

GTM - GraphiTech Monoblock

GTI - GraphiTech Inverted

The process side is flat, allowing the addition of a TFE grade fluoropolymer liner. This offers enhanced corrosion protection where the process conditions involve substances that may react with graphite.

GTMV - GraphiTech Monoblock with Vacuum Support

Where vacuum conditions may be present, we offer the disc with additional vacuum support in the form of either a bar or a dial (GTMV).

Size	25mm - 600mm
Burst Pressure	0.03 - 27.58 barg
K_R Value (K_{RGL})	GTI: 0.5 GTM: 0.6 GTMV: 6.44
Operating Ratio	90%
Performance Tolerance	+/- 5%
Manufacturing Range	0%

Let us help you with all your pressure relief questions.

UK office | North Shields

+44 (0)191 293 1234 | uksales@osecoelfab.com

US office | Broken Arrow

+1 (918) 258 5626 | info@osecoelfab.com

osecoelfab.com

REQUEST A QUOTE FOR
THE GRAPHI-TECH



TECHNICAL SPECIFICATIONS



Size range	25-600mm (1"-24")
Burst pressure range	0.03 barg to 27.58 barg (0.5 psig to 400 psig)
Temperature range	185°C (365°F) without high temperature spacer. We can supply a High Temperature Spacer (HT) for gas and vapor applications above 185°C (365°F).
Standard materials	Disc: Graphite Gaskets: Non-asbestos Armored Ring: Carbon Steel, 316 Stainless Steel GTI liner (process side): TFE grade fluoropolymer
K _R Value	GTI: 0.5 GTM: 0.6 GTMV: 6.44
Max. Operating Ratio	90%
Performance Tolerance	+/-5%
Manufacturing Range	0%
Fragmentation	Will fragment
Vacuum Service	Add vacuum support to withstand full vacuum (GTMV)
Fluid compatibility	Gas service, liquid service
Torque requirements	See installation guide
Protective linings	Fluoropolymer liners available on process side
Relief Valve Isolation	Not suitable for safety relief valve isolation
Design Standards	Designed to meet ASME XIII standards

Certifications

ASME UD
PED 2014/68/EU

Related Products

Rupture Discs

Universal Arma-Gard
Two-Way Arma-Gard
Graphite G2

Accessories

High Temperature Sensor (HT)

Burst Pressure Ranges

GraphiTech Min/Max Burst Pressure @ 22° C (barg) / 72° F (psig)



in 150# flanges

SIZE		GTM		GTI		GTMV	
DN (mm)	inches	MIN psig (barg)	MAX psig (barg)	MIN psig (barg)	MAX psig (barg)	MIN psig (barg)	MAX psig (barg)
25	1	15 (1.03)	400 (27.58)	15 (1.03)	400 (27.58)	15 (1.03)	20 (1.38)
40	1.5	10 (0.69)	300 (20.68)	10 (0.69)	300 (20.68)	10 (0.69)	20 (1.38)
50	2	4 (0.28)	250 (17.24)	4 (0.28)	250 (17.24)	4 (0.28)	20 (1.38)
80	3	3 (0.21)	200 (13.79)	3 (0.21)	200 (15.79)	3 (0.21)	20 (1.38)
100	4	2 (0.14)	150 (10.34)	2 (0.14)	150 (10.34)	2 (0.14)	20 (1.38)
150	6	2 (0.14)	100 (6.89)	2 (0.14)	150 (10.34)	2 (0.14)	20 (1.38)
200	8	1 (0.7)	100 (6.89)	1 (0.7)	150 (10.34)	1 (0.7)	20 (1.38)
250	10	1 (0.7)	100 (6.89)	1 (0.7)	125 (8.62)	1 (0.7)	20 (1.38)
300	12	0.5 (0.03)	100 (6.89)	0.5 (0.03)	125 (8.62)	0.5 (0.03)	20 (1.38)
350	14	0.5 (0.03)	75 (5.17)	0.5 (0.03)	100 (6.89)	0.5 (0.03)	20 (1.38)
400	16	0.5 (0.03)	75 (5.17)	0.5 (0.03)	100 (6.89)	0.5 (0.03)	20 (1.38)
450	18	0.5 (0.03)	50 (3.45)	0.5 (0.03)	100 (6.89)	0.5 (0.03)	20 (1.38)
500	20	0.5 (0.03)	50 (3.45)	0.5 (0.03)	50 (3.45)	0.5 (0.03)	20 (1.38)
600	24	0.5 (0.03)	25 (1.72)	0.5 (0.03)	50 (3.45)	0.5 (0.03)	20 (1.38)

in 300# flanges

SIZE		GTM		GTI		GTMV	
DN (mm)	inches	MIN psig (barg)	MAX psig (barg)	MIN psig (barg)	MAX psig (barg)	MIN psig (barg)	MAX psig (barg)
25	1	50 (3.45)	400 (27.58)	10 (0.69)	400 (27.58)	15 (1.03)	20 (1.38)
40	1.5	15 (1.03)	300 (20.68)	7 (0.48)	300 (20.68)	10 (0.69)	20 (1.38)
50	2	15 (1.03)	250 (17.24)	3 (0.48)	250 (17.24)	4 (0.28)	20 (1.38)
80	3	15 (1.03)	200 (13.79)	2 (0.14)	200 (15.79)	3 (0.21)	20 (1.38)
100	4	15 (1.03)	150 (10.34)	1.5 (0.10)	150 (10.34)	2 (0.14)	20 (1.38)
150	6	15 (1.03)	100 (6.89)	1 (0.07)	150 (10.34)	2 (0.14)	20 (1.38)
200	8	15 (1.03)	100 (6.89)	0.50 (0.03)	150 (10.34)	1 (0.7)	20 (1.38)

Armored ring required at or above these burst pressures

NOMINAL DIAMETER inches	BURST PRESSURE psig (barg)
1-3"	150 (10.34)
4" and 6"	100 (6.89)
8" and 10"	75 (5.17)
12-24"	50 (3.45)

Burst Tolerance

+0.75 / -0 psig below 1 psig
 +/-0.75 psig 1-15 psig
 +/-5% above 15 psig