



RENOVATION AND EXTENSION OF THE SCHLAUES HAUS

OLDENBURG, GERMANY, 2010-2012

Client

Schlaues Haus Oldenburg GmbH

Architect

Behnisch Architekten, Stuttgart

Planning and construction

2010-2012

Gross

1.150 m² / 12,380 sq.ft.

Volume

4.560 m³ / 161,035 cu.ft.

Address

Schlossplatz 16
26122 Oldenburg
Germany

The Schlaues Haus Oldenburg (Smart House Oldenburg) is a public building for the display of the surrounding region's scientific expertise, as the „City of Science“. Situated in the city centre, the building serves as an important venue for people visiting Oldenburg thanks in part to the tourist information center which is located at ground level.

The idea of a „Smart House“ is reflected in the architectural concept of the building. It is energy efficient, sustainable, ultramodern and flexible, and, hence, able to suit all kinds of requirements.

In planning, sustainability begins with the choice of the site. „Schlaues Haus“ is situated at „Schlossplatz“ (castle place) in a historic city district and the Haus links the castle to the North

with the castle park to the South. It comprises the oldest building in town - a bourgeois edifice dating from the 16th century long since empty. The historic landmark has now undergone a renovation and expansion. Visitors embark on an architectural journey that encompasses five centuries of advancement & evolution in passing through the existing, old building to the modern, daylight structure. It is here that the crux of sustainability is centered - in the bracket that links the oldest building in town with the most progressive one - where the preservation and improvement of a historically-listed architectural landmark occurs in synergy with the successful implementation of innovative and progressive energy efficiency.

The ensemble consisting of the old Haus and addition fits harmoniously into the surround-

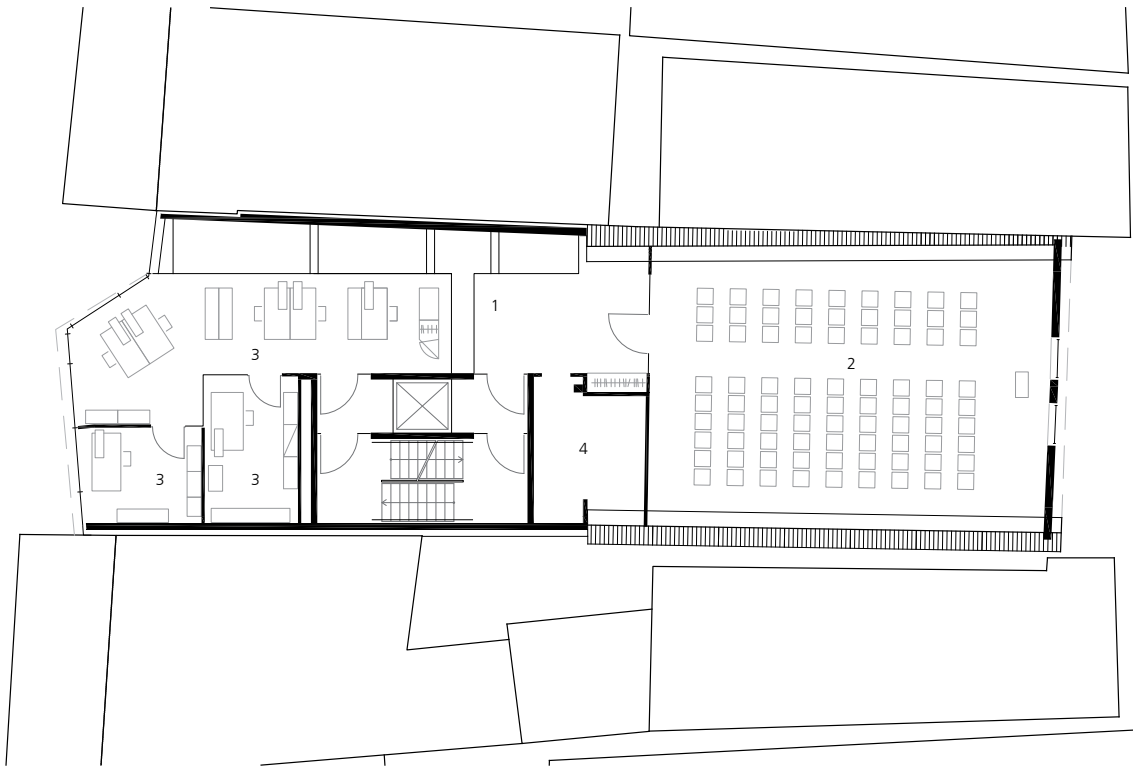


ings. The dimensions of the quarter are referred to by the structure of the new Haus. The split level organization allows users to experience the transition between the existing building and new building through the use of projecting masses (levels) and voids.

The desire to create a passive intelligent building that optimises use of daylight has guided the design of the Schlaues Haus addition. Facing Schlosspark, the innovative, new South facade, with its integrated sun protection, is one of the energy concept components. The building envelope was developed on the basis of energy and climate simulations, and thus ensures an optimum balance of solar gain in the summer with minimal heat loss in the winter.



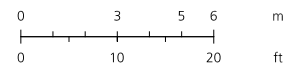
Site plan



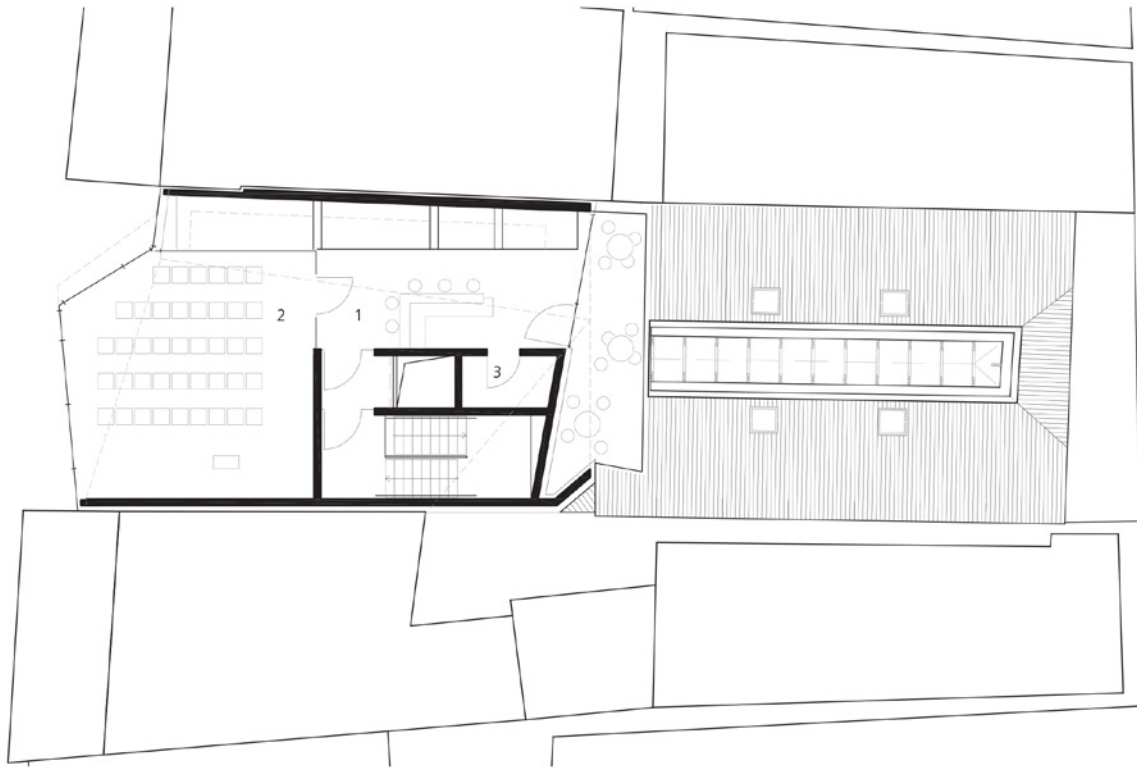
Level 2

1 - reception
2 - event
3 - office

4 - technics

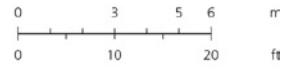


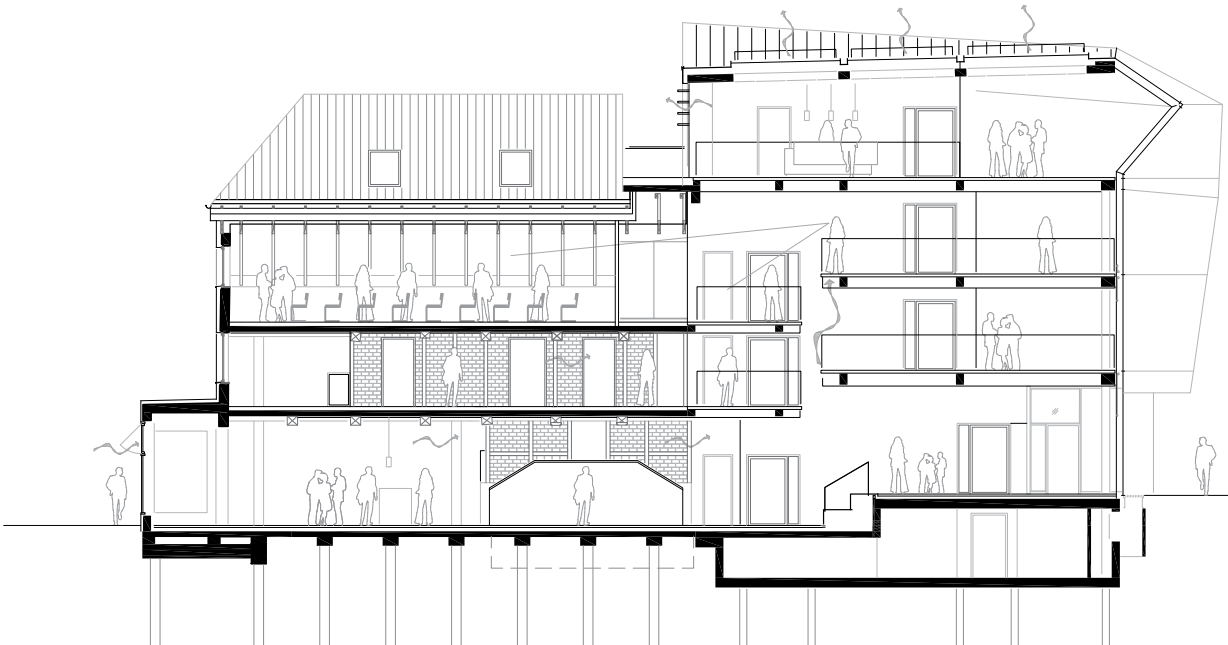




Level 3

- 1 - Empfang
- 2 - Veranstaltung
- 3 - Technik





Long section

0 3 5 6 m
0 10 20 ft