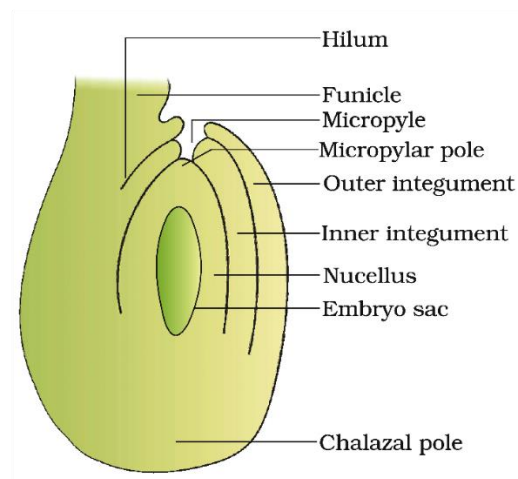
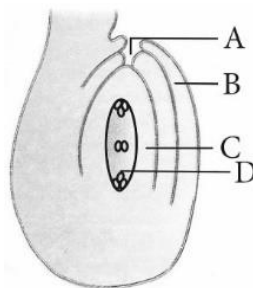


1. A Diagrammatic view of a Typical Anatropous ovule



Important questions based on it:

- A. Identify and label the parts in the given anatropous ovule.



(AI 2010C)

- B. Draw the structure of anatropous ovule.

(Delhi 2008)

- C. Draw a diagrammatic sketch of the sectional view of a typical anatropous ovule. (2/5, Delhi 2008)

- D. Draw a diagram of L.S. of an anatropous ovule of an angiosperm and label the following parts:

- (a) Nucellus
- (b) Integument
- (c) Antipodal cell
- (d) Secondary nucleus

(Delhi 2007)

- E. Draw a labelled diagram of a typical anatropous ovule.

(Delhi 2014)

- F. Draw a diagram of a vertical section of an anatropous ovule of an angiosperm. Label the following parts:

- (a) Hilum
- (b) Micropyle
- (c) Outer integument
- (d) Nucellus
- (e) Embryo sac
- (f) Antipodals

(AI 2011C)

G. Draw a diagrammatic sectional view of a mature anatropous ovule and label the following parts in it.

- (a) that develops into seed coat
- (b) that develops into an endosperm in an albuminous seed
- (c) that develops into an embryo after fertilisation
- (d) through which the pollen tube enters into the embryo sac
- (e) that attaches the ovule to the placenta

(Delhi 2013)