

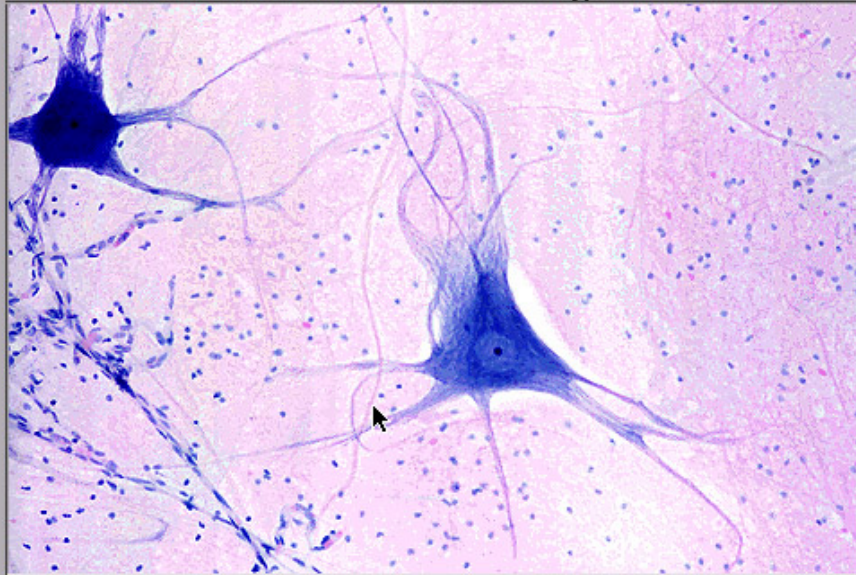


5 of 8

Anaphase of mitosis -- During anaphase, sister chromatids separate and are drawn towards the diplosome by spindle fibers of the spindle apparatus. In early anaphase chromosomes first separate and begin movement toward the poles. This image shows a cell at mid-anaphase. Late anaphase occurs when chromosomes have aggregated at the poles in the daughter cells. 1500x

click to identify:

- Chromosomes
- Spindle fibers
- Diplosome



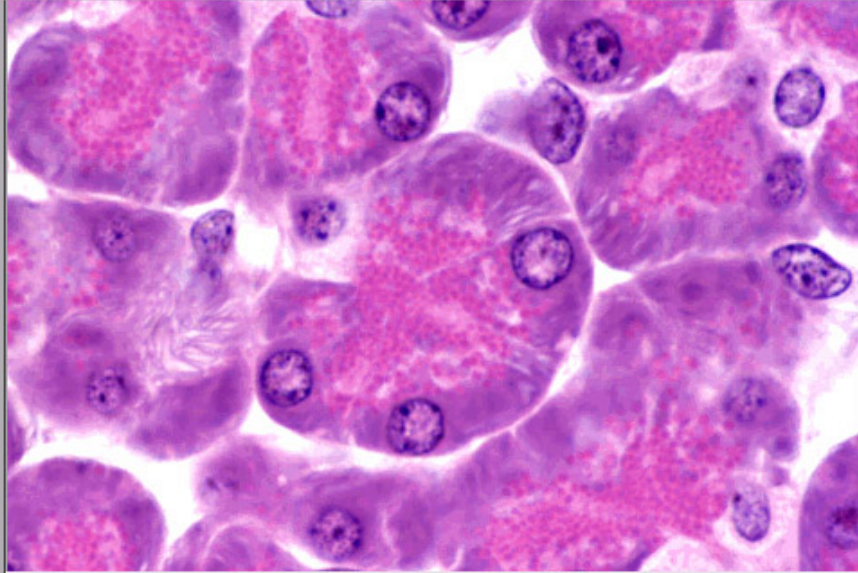
1 of 16

Multipolar neuron -- This image shows a multipolar neuron in an H&E stained smear of spinal cord, such that the entire neuron is visible. Note the axon, euchromatic nucleus, nucleolus and numerous dendrites emanating from the cell body. The delicate fibrils in the cytoplasm are the cytoskeleton. Small nuclei are those of neuroglial cells. 200x

click to identify:

- Dendrites
- Axon
- Cell body
- Nucleus
- Nucleolus

Main Menu > Tissues > Epithelium > Glandular > Exocrine > Compound



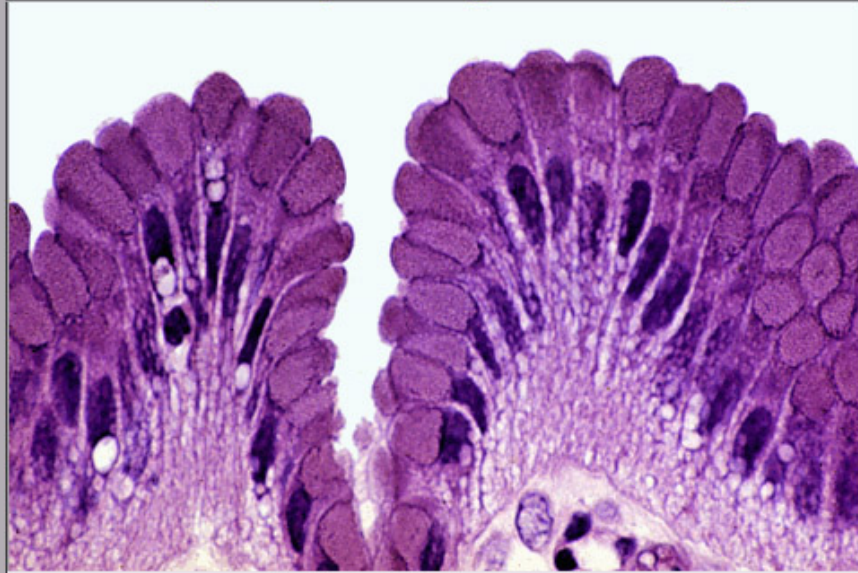
11 of 11

Compound acinar gland -- An acinus in the pancreas clearly demonstrates how exocrine cells are polarized to secrete toward an epithelial surface. The apex of the cell is filled with secretory granules which contain the protein synthesized by the rough endoplasmic reticulum. These granules will be released into the acinar lumen by the merocrine mode of secretion. 1000x

click to identify:

- Serous acinus
- Nuclei of serous cells
- Rough endoplasmic reticulum
- Secretory granules

Main Menu > Organs & Systems > Digestive > Tubular Digestive Tract > Stomach



3 of 16

Sheet gland -- The simple columnar epithelium lining the stomach is modified into a sheet gland, with each cell in the sheet actively producing the mucus that protects the stomach from its acidic environment. Mucin accumulates in the apex of each cell while the cytoplasm and nucleus are squeezed into the slender stem of the cell. 1000x

click to identify:

- Sheet gland
- Mucin
- Basal part of cell
- Lamina propria
- Gastric pit