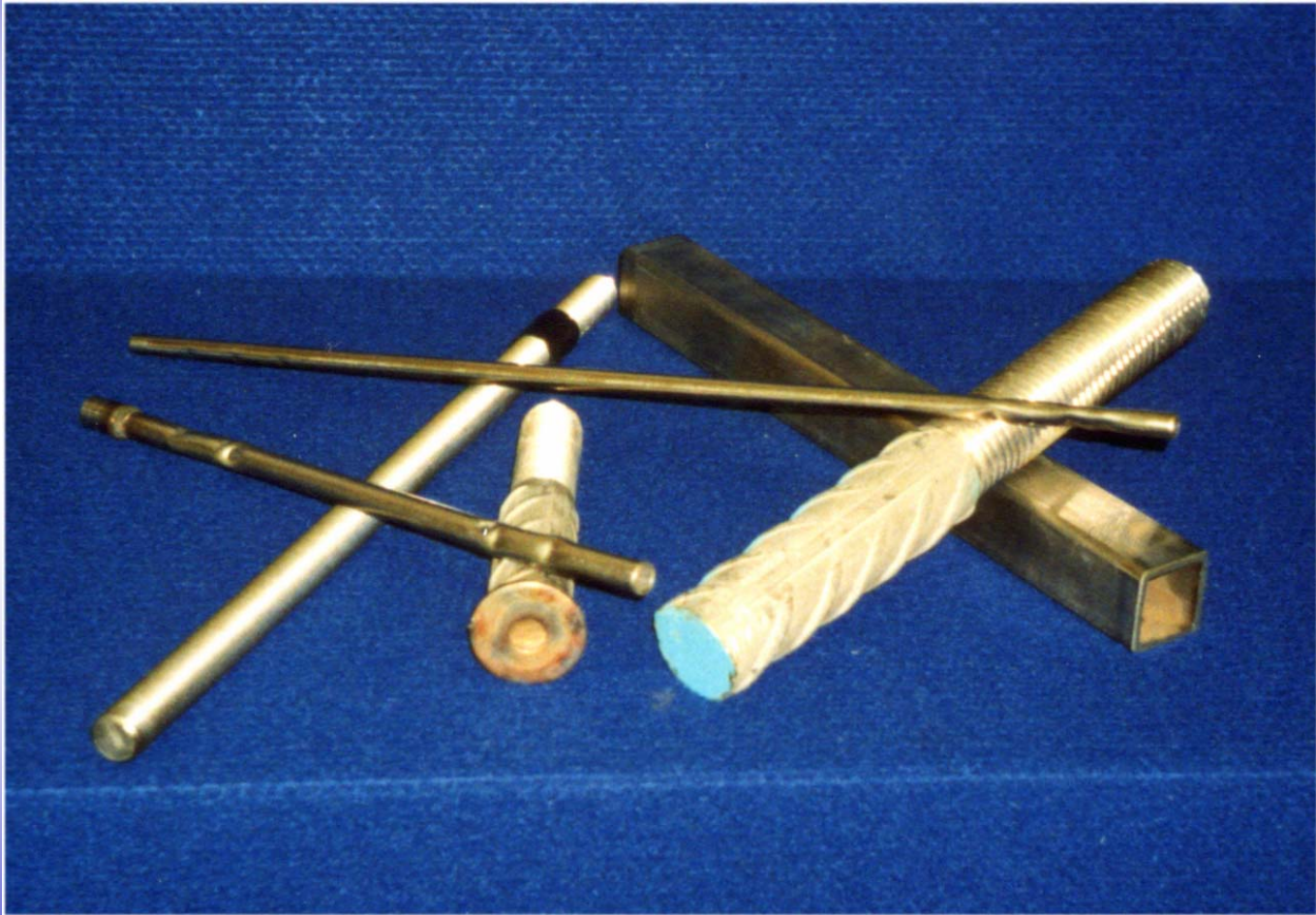


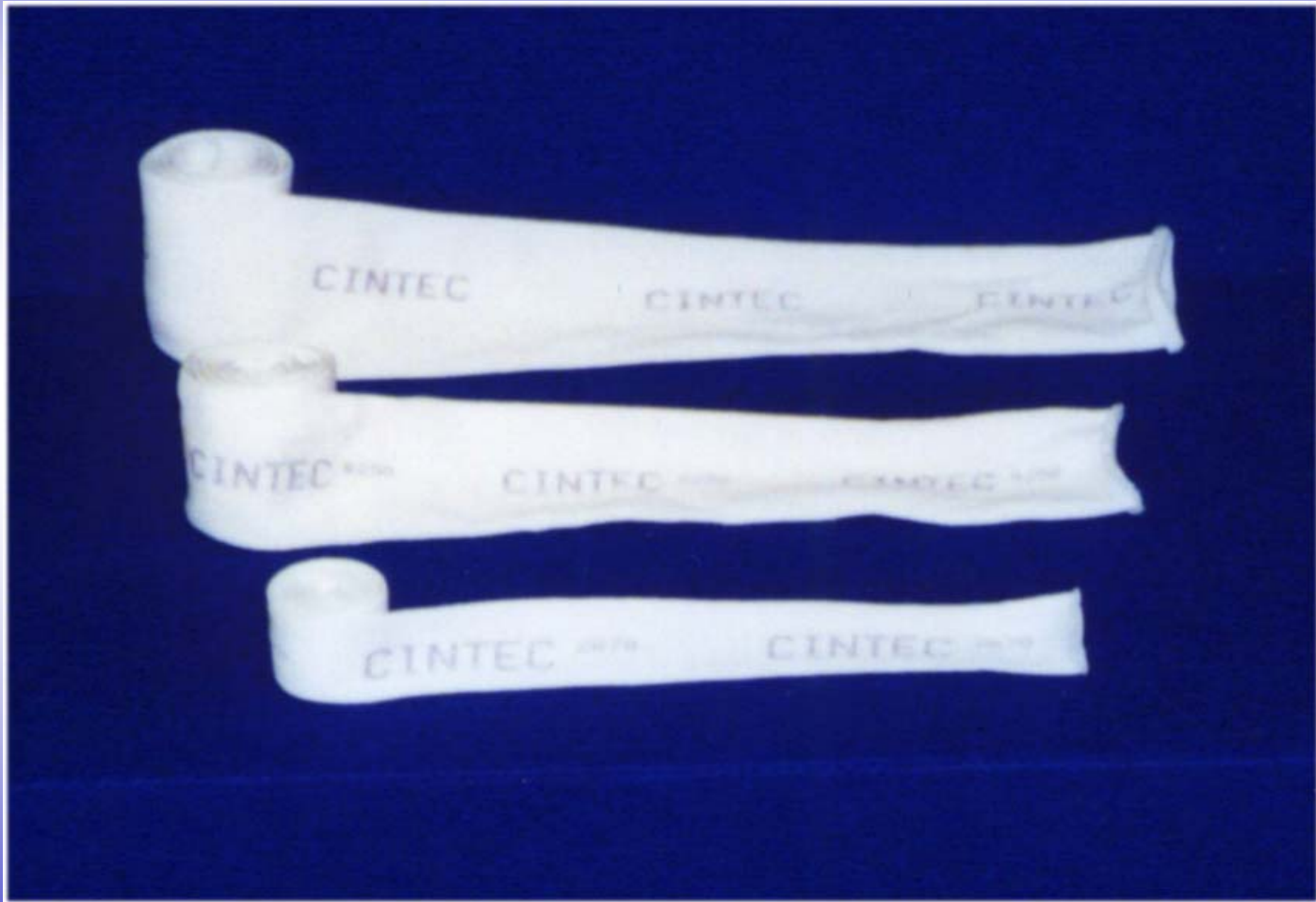
***CINTEC CANADA LTEE.***

**Les renforcements structurels**

# La Barre



# La Gaine



# Le Coulis



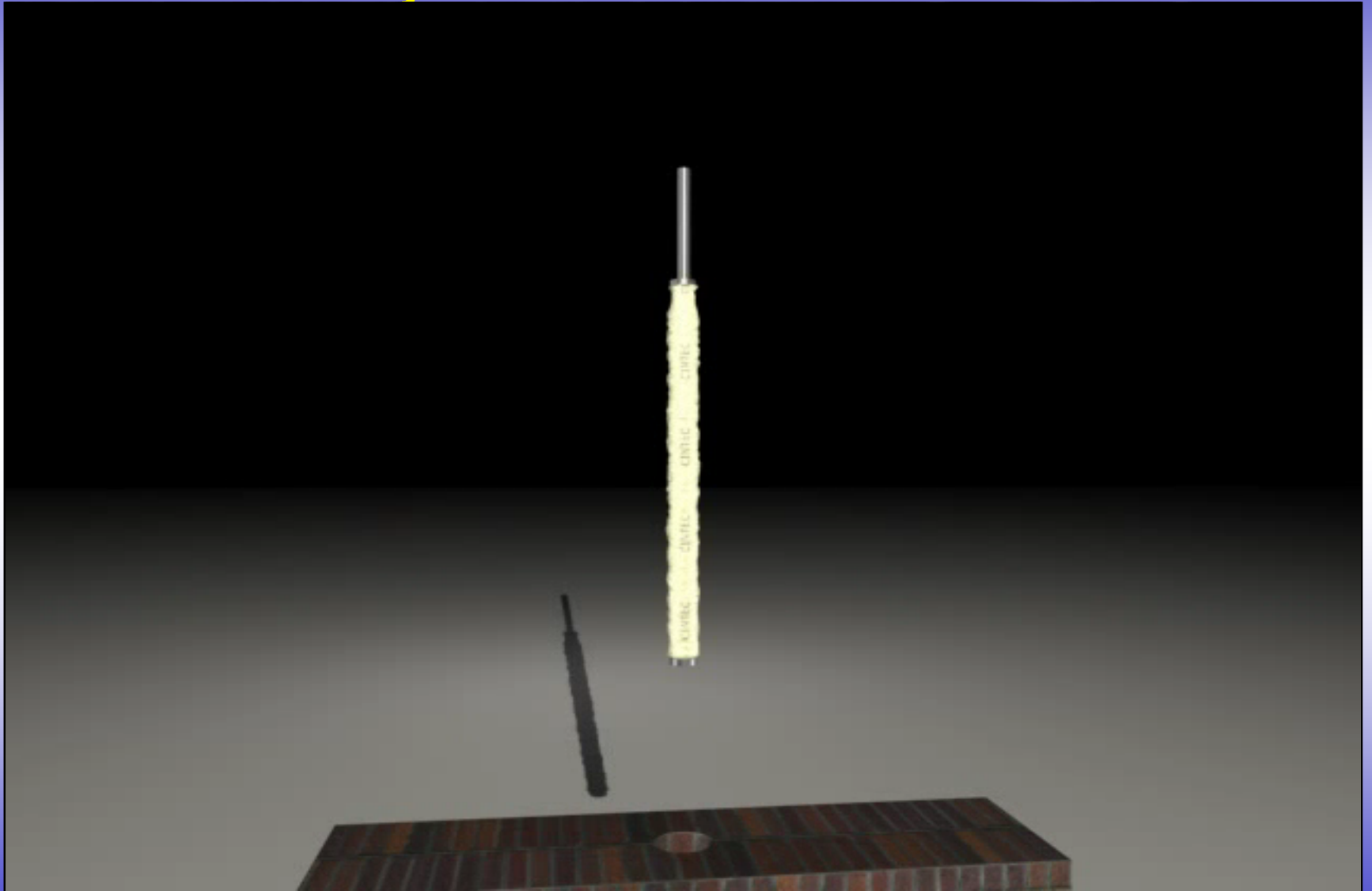
# Forage Non Percussive



# Injection de Coulis



# Injection de Coulis



# Ancrage en moullons





# *Les Avantages*

- **Conception sur mesure**
- **Produit naturel**
- **Durable, a l'épreuve du feu**
- **Injection de coulis contrôlé**
- **Invisible**
- **Installation rapid**

# ***APPLICATIONS***

***Renforcement et Reparations  
de Bâtiments***

# Les applications les plus fréquents

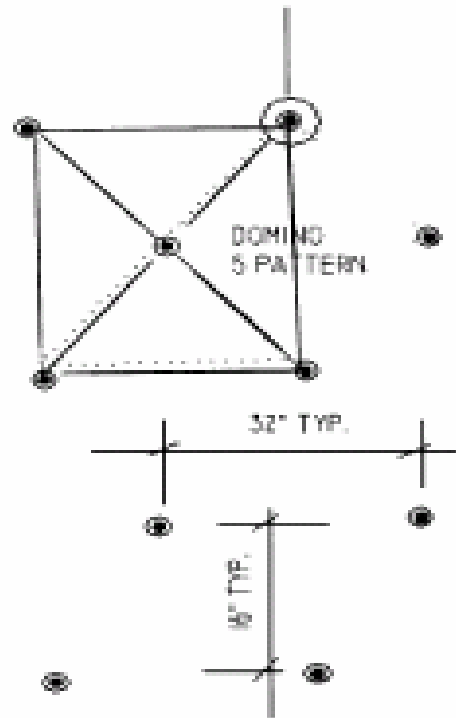
- Attacher les parois de mur
- Contrôle de mouvement des fissures majeurs

# Ancrage en meulons

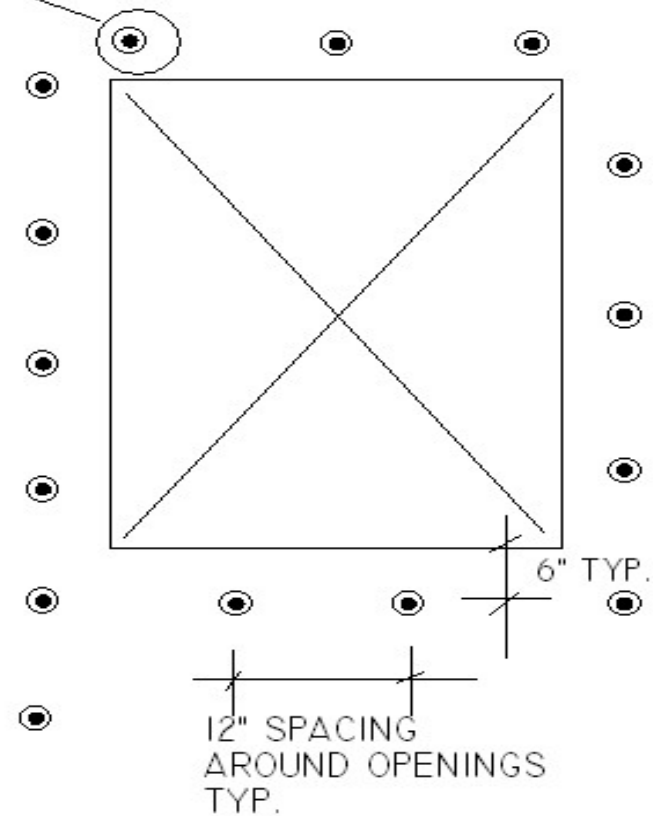


# DOMINO FIVE PATTERN

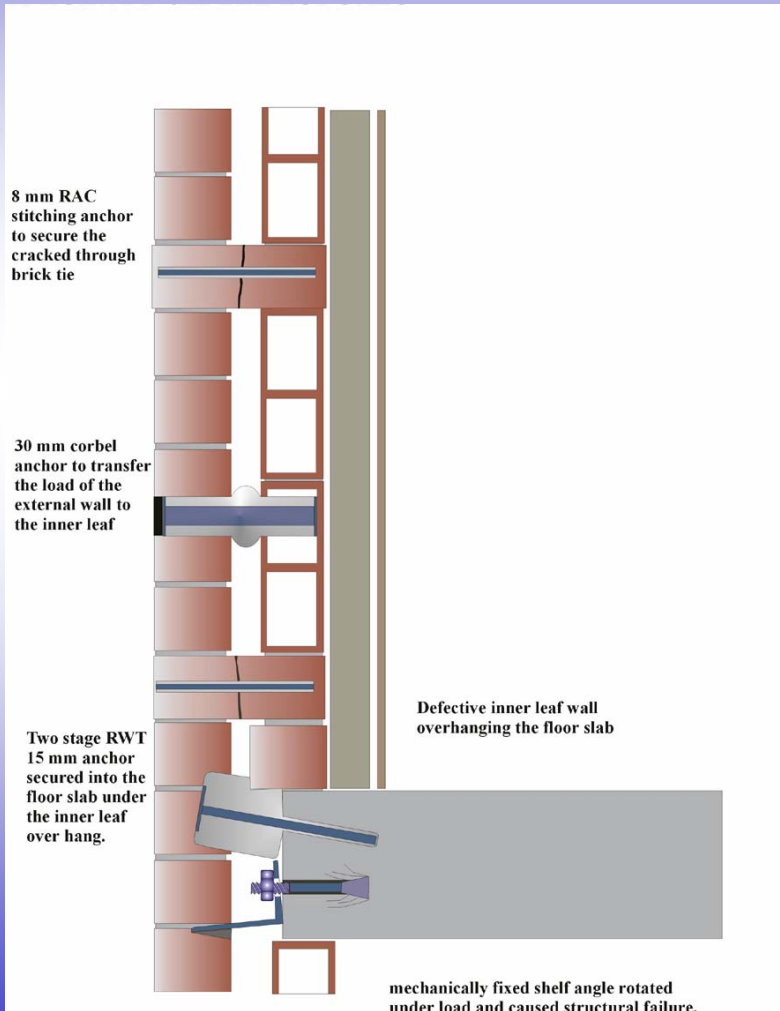
STITCHING ANCHORS - 5/8" DIA HOLLOW  
SS X 18" SOCKED FULL LENGTH  
3/4" DIA. HOLE AND SOCK  
PALIN ENDS COVER ENDS WITH  
COLOR MATCHED MORTAR



STITCHING ANCHORS - 3/8 HOLLOW SS  
X 18" SOCKED FULL LENGTH  
3/4" DIA HOLE AND SOCK  
PLAIN ENDS COVER ENDS WITH  
COLOR MATCHED MORTAR



# 77 Howard Street - Toronto



- Centre Roussin





# La Gare Windsor



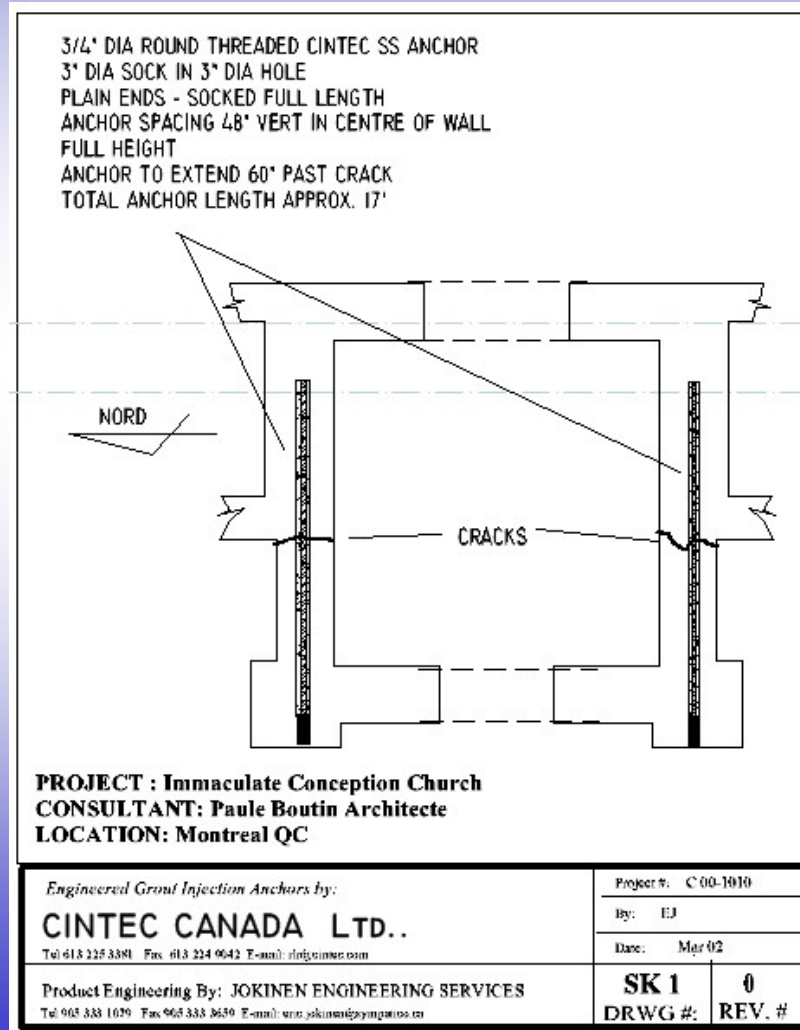
- Hydro Québec

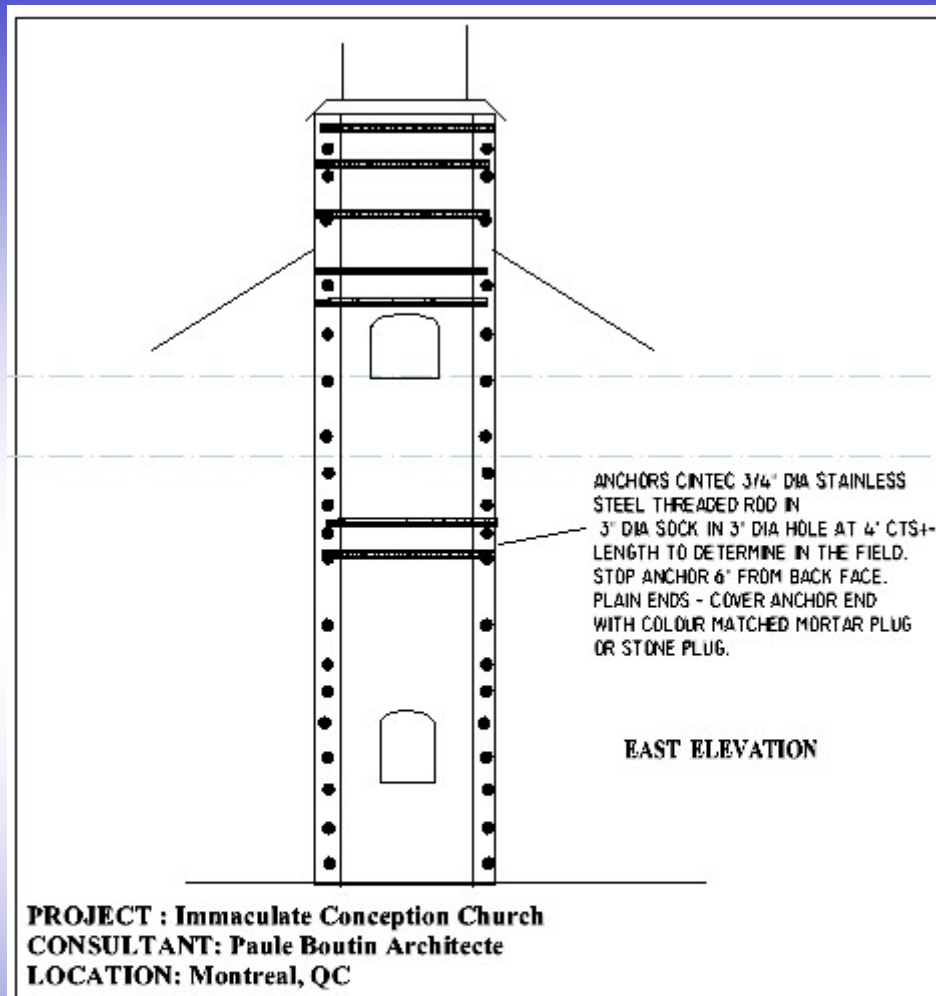


# Phoenicia Hotel - Malta



# Église Conception Immaculée Montréal



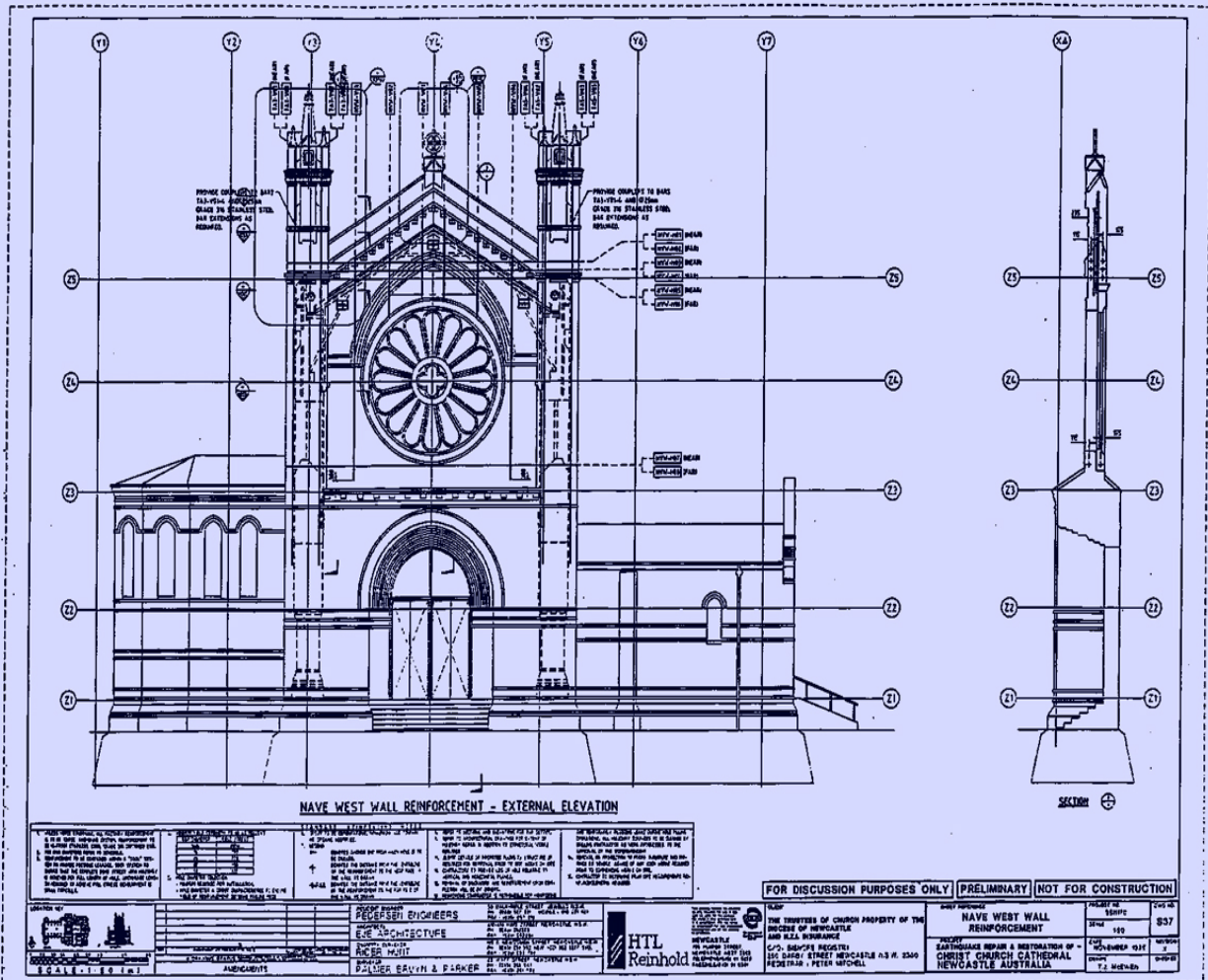


<i>Engineered Grout Injection Anchors by:</i> <b>CINTEC CANADA LTD..</b> Tel: 613 225 3381 Fax: 613 224 9642 E-mail: info@cintec.com	Project #: C 00-1010	
	By: EJ	
Product Engineering By: JOKINEN ENGINEERING SERVICES Tel: 905 333 1079 Fax: 905 333 3659 E-mail: wrc.jokinen@jokinenengineering.com	Date: Apr 02	
	SK 2 DRWG #:	1 REV. #

# Christchurch Cathedral N.S.W.



# Cathédrale Christchurch – L'installation d'ancrage jusqu'à 32 mètres de longueur



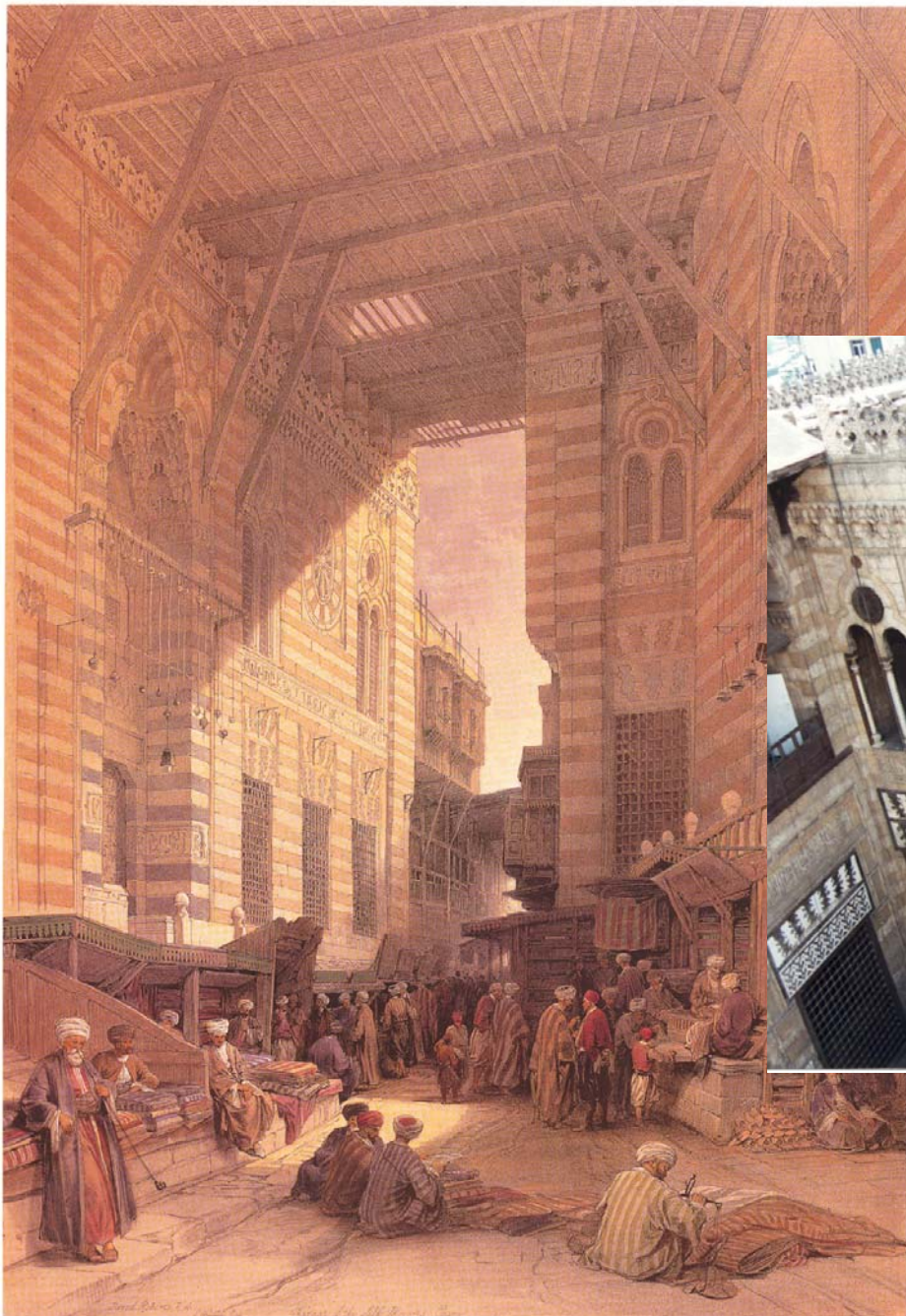


Le édifices  
parlementaires du  
Canada

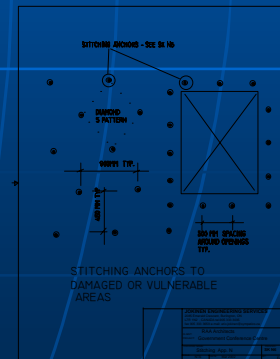
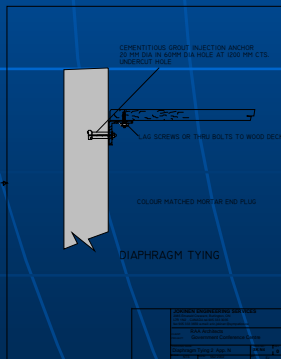
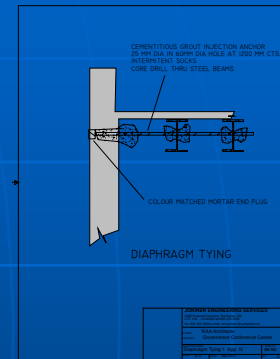
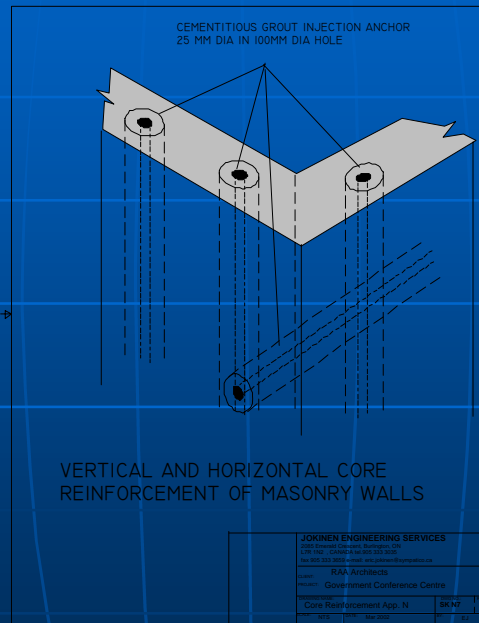
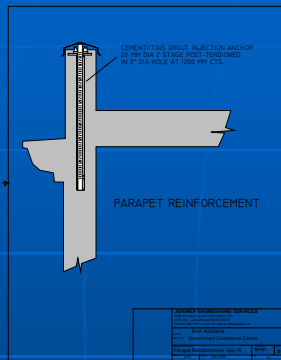


***Seismique***

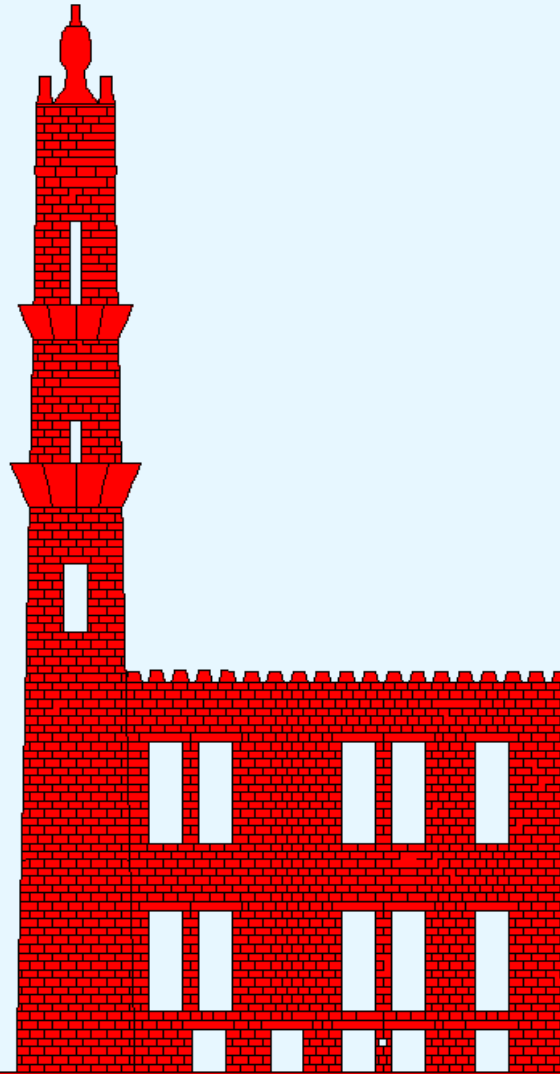
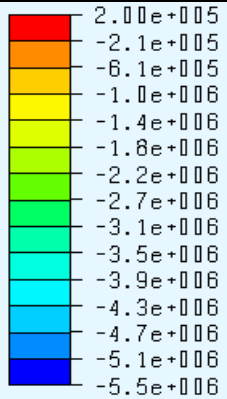
# La mosquée de Al Ghuri , Le Caire , Égypte



# Internal Reinforcement and Lateral Tying

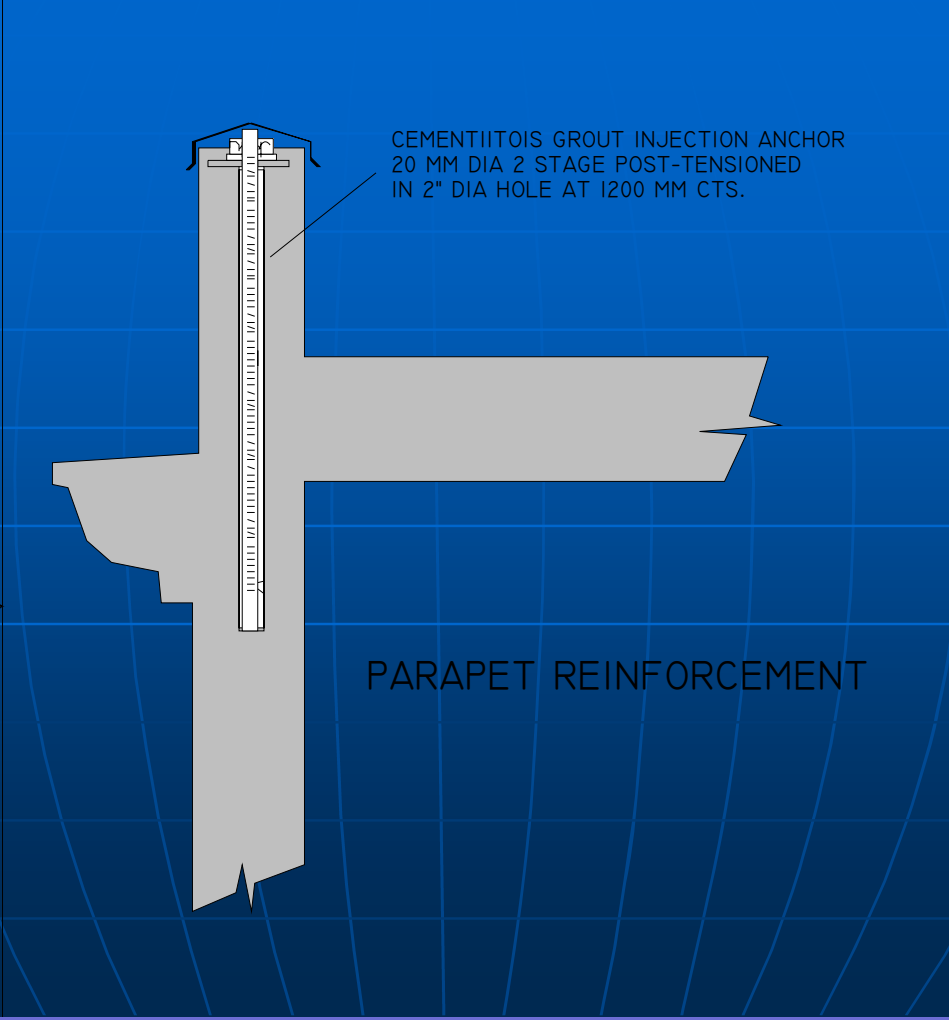


# Analyses avancée par ordinateur



*Principal  
tensile  
stresses  
[N/mm<sup>2</sup>]*

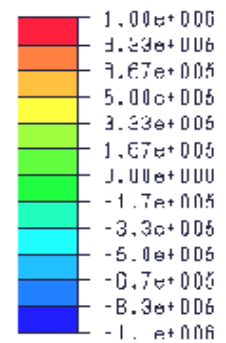
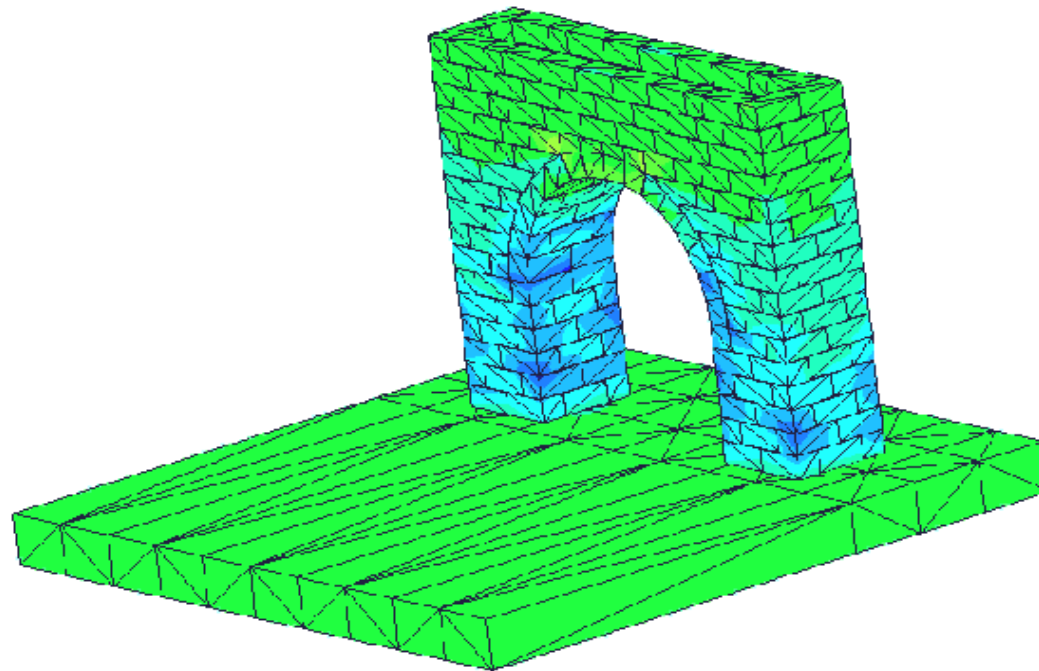
*Exaggerated  
deformations*



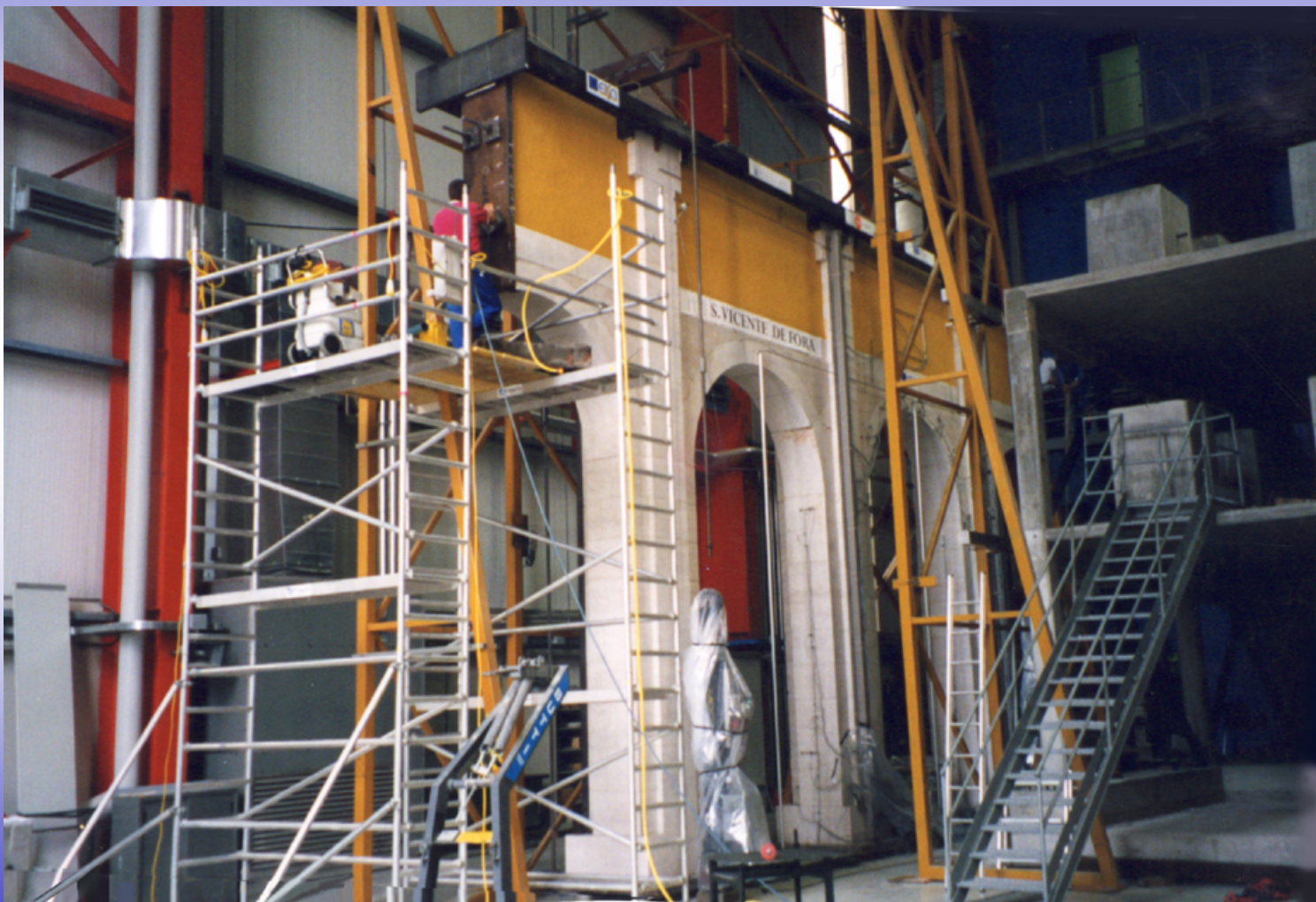
CEMENTITIOUS GROUT INJECTION ANCHOR  
20 MM DIA 2 STAGE POST-TENSIONED  
IN 2" DIA HOLE AT 1200 MM CTS.

PARAPET REINFORCEMENT

# Analyses 3D



# Centre de recherches conjointe - Italie



# Structures de Génie Civile





# Cintec - Clients et Contacteurs

- Ville de Montréal
- Gouvernement fédérale
- Architectes et consultants  
Montréalais
- Fabrique de Montréal



# Essais

gel- dégel  
à long terme  
incendies  
résistances



# Coordonnées

- Cintec Canada
- Téléphone 613 225 3381