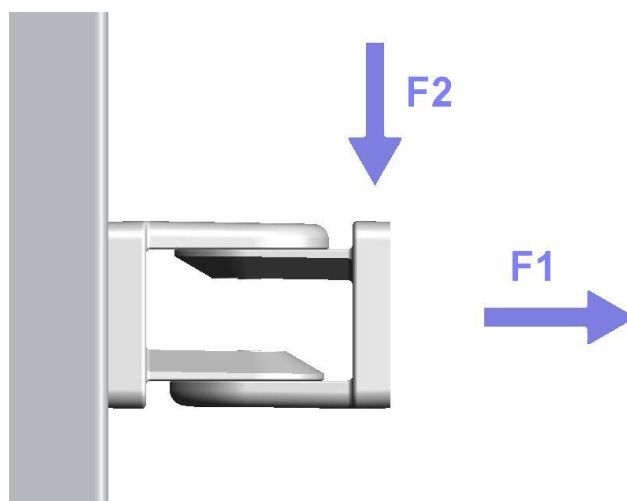




Load information from FATH joints:

Belastungsangaben von FATH Gelenken:



Joints of Aluminium:

Gelenke aus Aluminium:

Joint/ Gelenk 20:

093GA20AN/ 093GAF20AN



$F1 = 500N$

$F2 = 200N$

Max. Holding torque tightened with clamping lever /

Max. Haltemoment mit angezogenen Klemmhebel = 5Nm

Joint/ Gelenk 45:

093GA45AN/ 093GAF45AN



$$F1 = 10.000N$$

$$F2 = 1.000N$$

Max. Holding torque tightened with clamping lever /

Max. Haltemoment mit angezogenen Klemmhebel = 5Nm

Joins made of zinc die-cast/ Gelenke aus Zinkdruckguss:

Joint/ Gelenk 25:

093G25A/ 093GF25A

(093G25AN06/ 093GF25AN06)



$$F1 = 2.000N$$

$$F2 = 500N$$

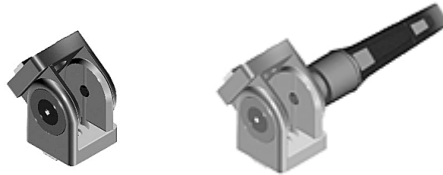
Max. Holding torque tightened with clamping lever /

Max. Haltemoment mit angezogenen Klemmhebel = 5Nm

Joint/ Gelenk 28:

093G28A/ 093GF28A

(093G28AN08/ 093GF28AN08)



$$F1 = 4.000N$$

$$F2 = 500N$$

Max. Holding torque tightened with clamping lever /

Max. Haltemoment mit angezogenen Klemmhebel = 5Nm

Joint/ Gelenk 30:

093G30A/ 093GF30A

(093G30AN06-093G30AN08/ 093GF30AN06-093GF30AN08)



$$F1 = 6.000N$$

$$F2 = 700N$$

Max. Holding torque tightened with clamping lever /

Max. Haltemoment mit angezogenen Klemmhebel = 5Nm

Joint/ Gelenk 38:

093G38A/ 093GF38A

(093G38AN08/ 093GF38AN08)



$$F1 = 8.000N$$

$$F2 = 700N$$

Max. Holding torque tightened with clamping lever /

Max. Haltemoment mit angezogenen Klemmhebel = 5Nm

Joint/ Gelenk 40:

093G40AN/ 093GF40AN



$$F1 = 10.000N$$

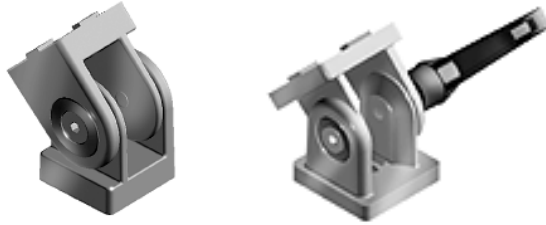
$$F2 = 900N$$

Max. Holding torque tightened with clamping lever /

Max. Haltemoment mit angezogenen Klemmhebel = 5Nm

Joint/ Gelenk 45:

093G45AN/ 093GF45AN



$$F1 = 10.000N$$

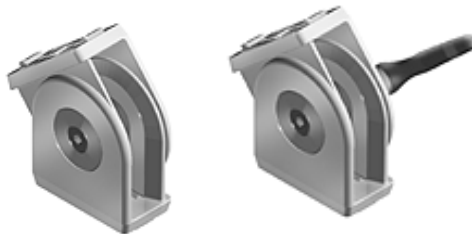
$$F2 = 900N$$

Max. Holding torque tightened with clamping lever /

Max. Haltemoment mit angezogenen Klemmhebel = 5Nm

Joint/ Gelenk 38/ 76 – 1,5"/3"

093G3876AN/ 093GF3876AN



$$F1 = 15.000N$$

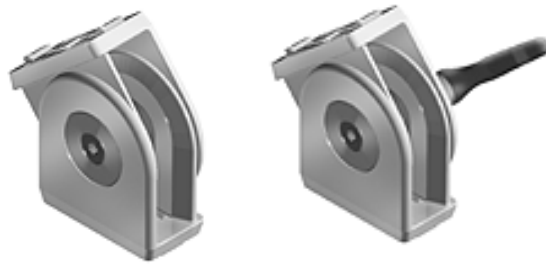
$$F2 = 1.000N$$

Max. Holding torque tightened with clamping lever /

Max. Haltemoment mit angezogenen Klemmhebel = 5Nm

Joint/ Gelenk 40/80:

093G4080AN/ 093GF4080AN



$$F1 = 15.000N$$

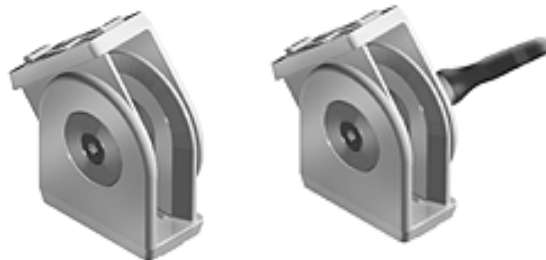
$$F2 = 1.000N$$

Max. Holding torque tightened with clamping lever /

Max. Haltemoment mit angezogenen Klemmhebel = 5Nm

Joint/ Gelenk 45/ 90:

093G4590AN/ 093GF4590AN



$$F1 = 15.000N$$

$$F2 = 1.000N$$

Max. Holding torque tightened with clamping lever /

Max. Haltemoment mit angezogenen Klemmhebel = 5Nm
