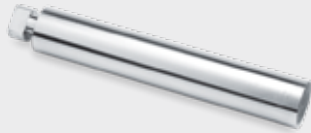
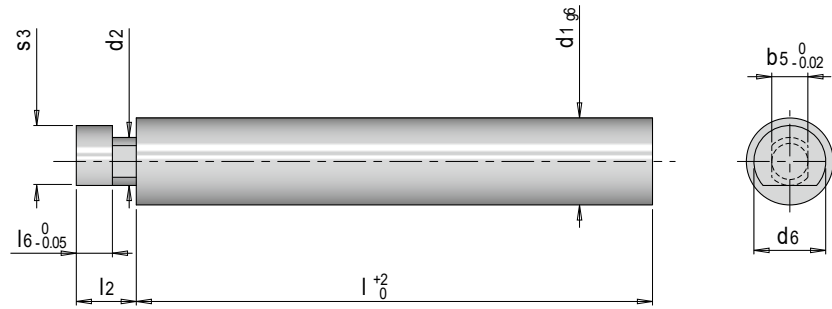


E 3076



Kerneinsatz rund für E 3072

Round core for E 3072



Mat.: 1.3343 ≈ 62 HRC

t3 min.	t3 max.	d6	l6	b5	s3	d2	l2	d1	l	Nr./No.
12.7	17.4	9.4	4.75	4.75	7.9	6.3	8.7	13	76	E 3076/13/76

1) FL: Führungslänge min. 1.5 x Kerndurchmesser / FL: Guiding length min. 1.5 x core diameter

